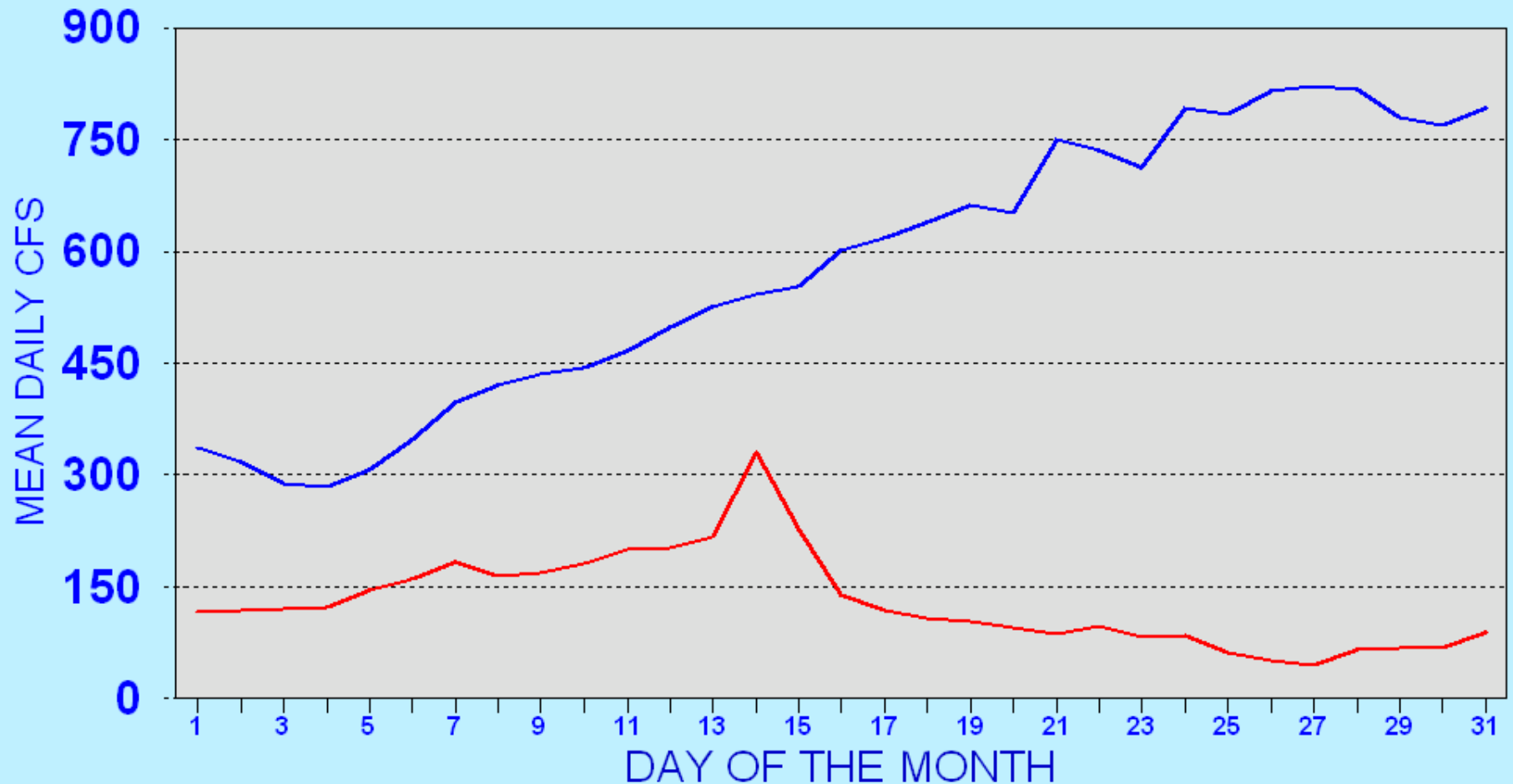




**South Platte  
River  
Summary  
October 2002**

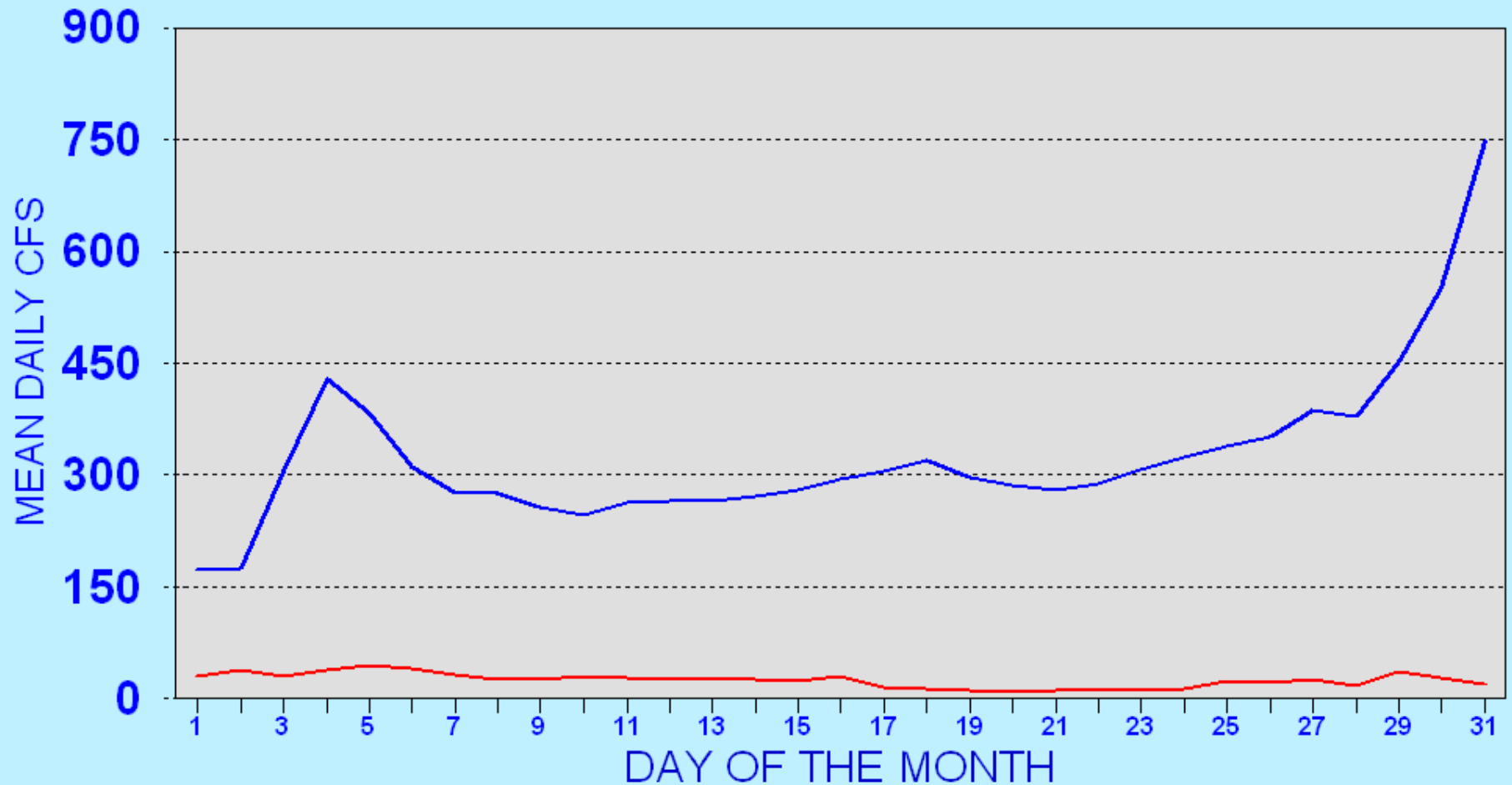
# SOUTH PLATTE RIVER OCTOBER 2001



— KERSEY

— JULESBURG

# SOUTH PLATTE RIVER OCTOBER 2002



— KERSEY

— JULESBURG

# South Platte River Monthly Means, Historic, Max, Min.

## South Platte River at Kersey

## South Platte River at Julesburg

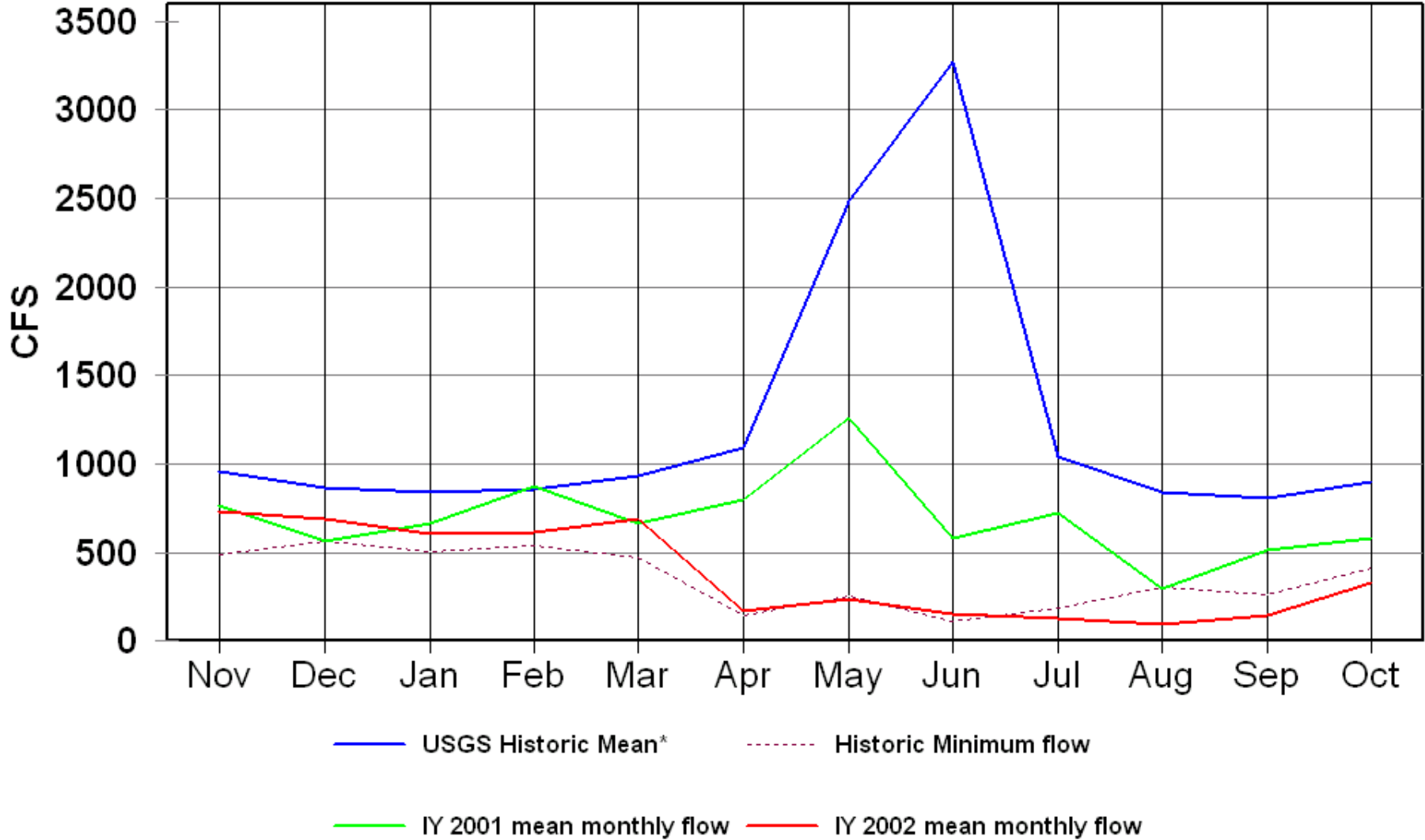
	South Platte River at Kersey						South Platte River at Julesburg							
	USGS Historic Mean *	Historic Max flow *	Year	Historic Min flow *	Year	IY 2002 mean monthly flow	Estimated Mean	USGS Historic Mean *	Historic Max flow *	Year	Historic Min flow *	Year	IY 2002 mean monthly flow	Estimated Mean
Nov	953	2585	1985	488	1978	728		Nov	358	2358	1985	23	1911	210
Dec	863	1337	1985	568	1982	689		Dec	420	1371	1985	18.8	1912	188
Jan	845	1434	1984	503	1982	609		Jan	538	1571	1998	89.9	1965	273
Feb	858	1641	1984	540	1978	615		Feb	619	1864	1930	78.9	1935	272
Mar	929	1852	1983	473	1982	686		Mar	559	2200	1939	56.9	1904	190
Apr	1096	3894	1983	144	1982	171		Apr	555	2808	1983	17.3	1904	97
May	2486	13060	1980	251	1977	235		May	1075	9922	1980	24.1	1911	24
Jun	3267	14520	1983	113	1977	149		Jun	1504	12200	1983	8.33	1910	46
Jul	1040	5784	1983	183	1994	124		Jul	309	5059	1983	2.15	1903	34
Aug	844	2783	1984	304	1981	92		Aug	189	1882	1997	2.52	1902	19
Sep	809	2079	1984	259	1977	143		Sep	252	1964	1984	5.6	1903	13
Oct	894	3388	1985	415	1978	325		Oct	318	2427	1985	5.85	1904	25

\*Period of record 1976-2001

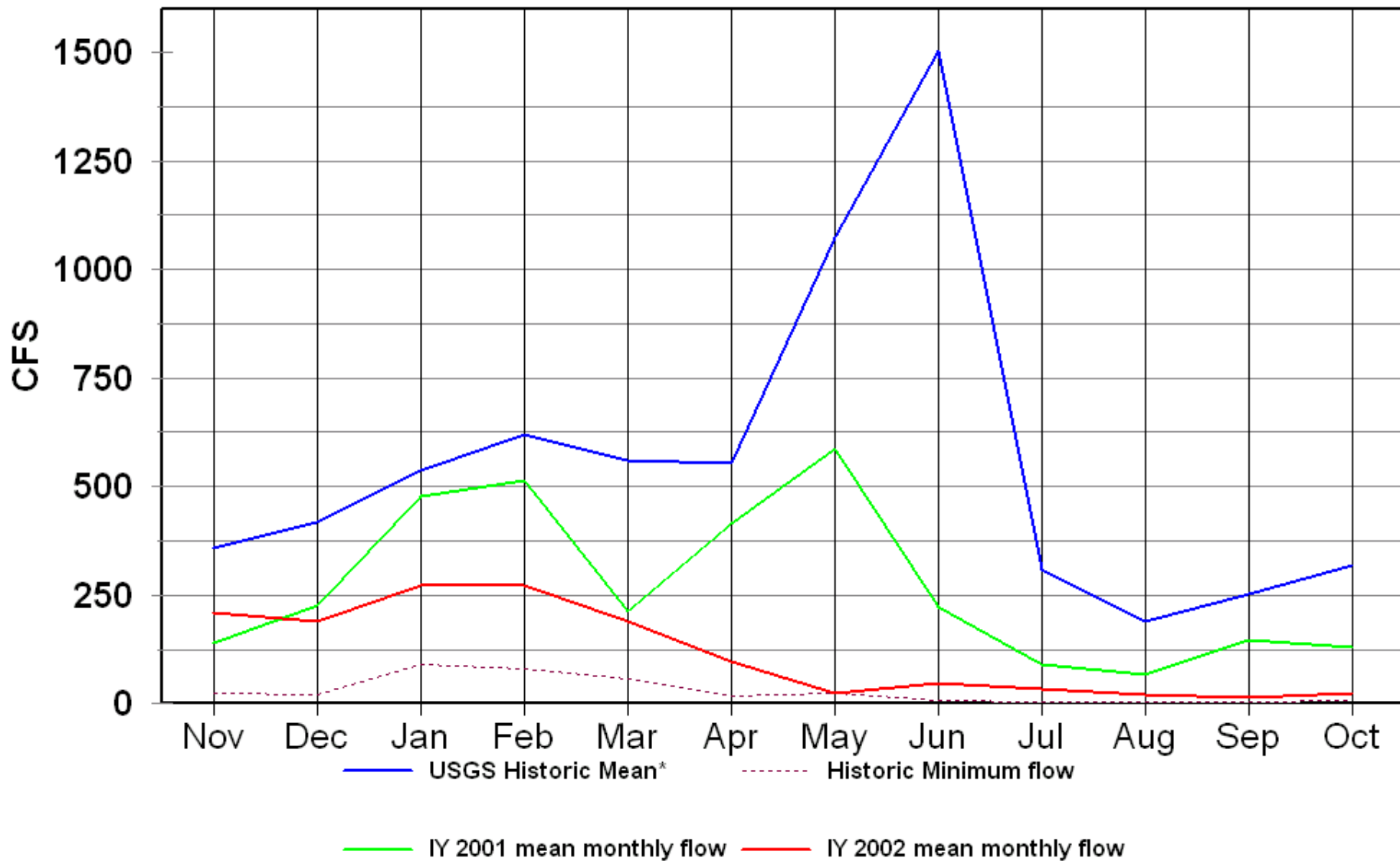
\*Period of record 1902-2001

**Preliminary data indicates a new October low mean daily flow rate at Kersey**

# South Platte River at Kersey IY 2002



# South Platte River at Julesburg IY 2002





# COLORADO DIVISION OF WATER RESOURCES, DIVISION 1

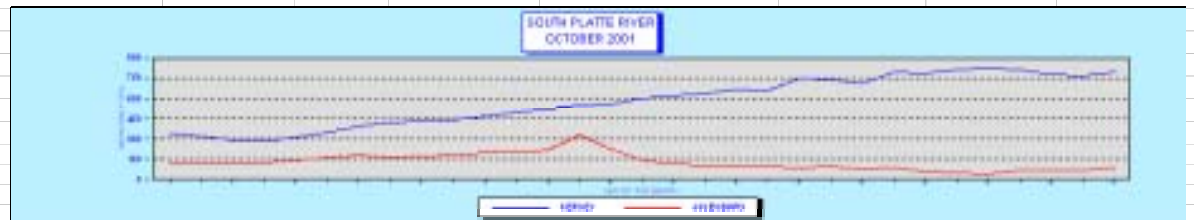
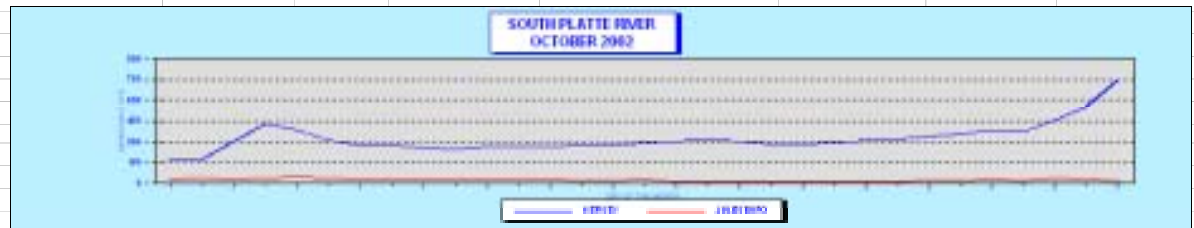
## MONTH OF OCTOBER 2002

06-Nov

RESERVOIR	FULL ALLOWABLE CAPACITY (ACRE FEET)	FIRST OF MONTH (ACRE FEET)	(ACRE)	END OF MONTH (ACRE FEET)	DISTRICT	CHANGE IN STORAGE (ACRE FEET)	% CHANGE IN STORAGE BASED ON FIRST OF MONTH STORAGE	% OF CURRENT FULL ALLOWABLE CAPACITY	% OF CURRENT FULL ALLOWABLE CAPACITY THIS MONTH, (LAST YEAR)	SURCHARGE (ACRE FEET)
JULESBURG	22,666	0		500	64	500	ERR	2%	72%	0
NORTH STERLING	73,730	3,500		5,170	64	1,670	48%	7%	20%	0
PREWITT	28,500	4,280		100	64	(4,180)	-98%	0%	43%	0
JACKSON	27,257	0		0	1	0	ERR	0%	0%	0
EMPIRE	37,700	0		0	1	0	ERR	0%	16%	0
RIVERSIDE	63,113	0		0	1	0	ERR	0%	37%	0
BARR LAKE	31,652	2,264		1,886	2	(378)	-17%	6%	27%	0
CHEESMAN	79,064	33,754		32,707	80	(1,047)	-3%	41%	74%	0
ELEVEN MILE	97,779	70,152		66,875	23	(3,277)	-5%	68%	100%	0
SPINNEY	53,651	28,482		26,787	23	(1,695)	-6%	50%	56%	0
ANTERO	20,015	8		8	23	0	0%	0%	98%	0

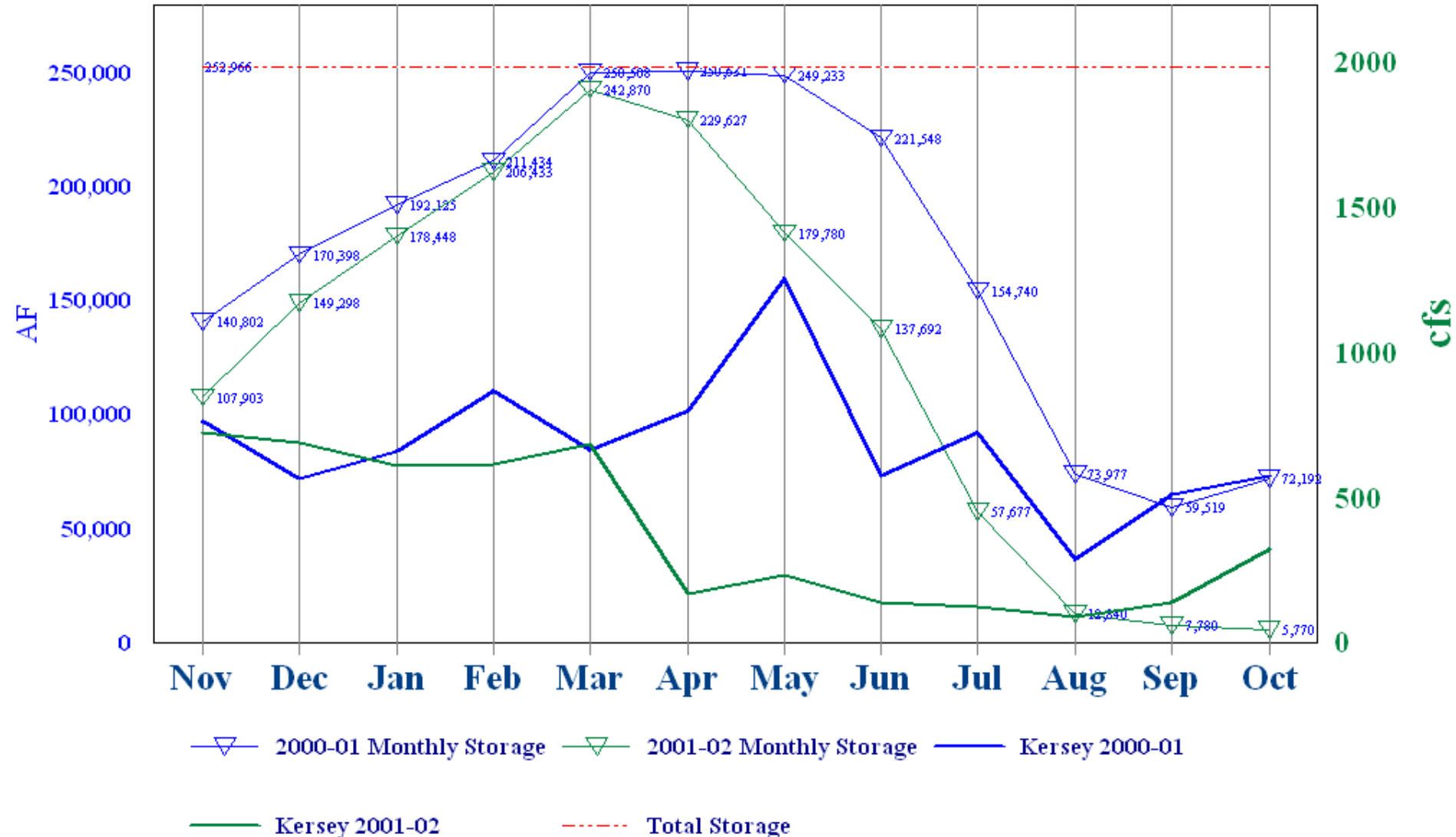
RIVER GAGES	MEAN DAILY FLOW (CFS)
KERSEY	325
JULESBURG	25
<b>THIS MONTH LAST YEAR</b>	
KERSEY	578
JULESBURG	129
<b>MEAN FOR PERIOD OF RECORD*</b>	
KERSEY	894
JULESBURG	318

\* 1976-2001  
1902-2001



# Reservoir Storage below Kersey

Selected Reservoirs\*

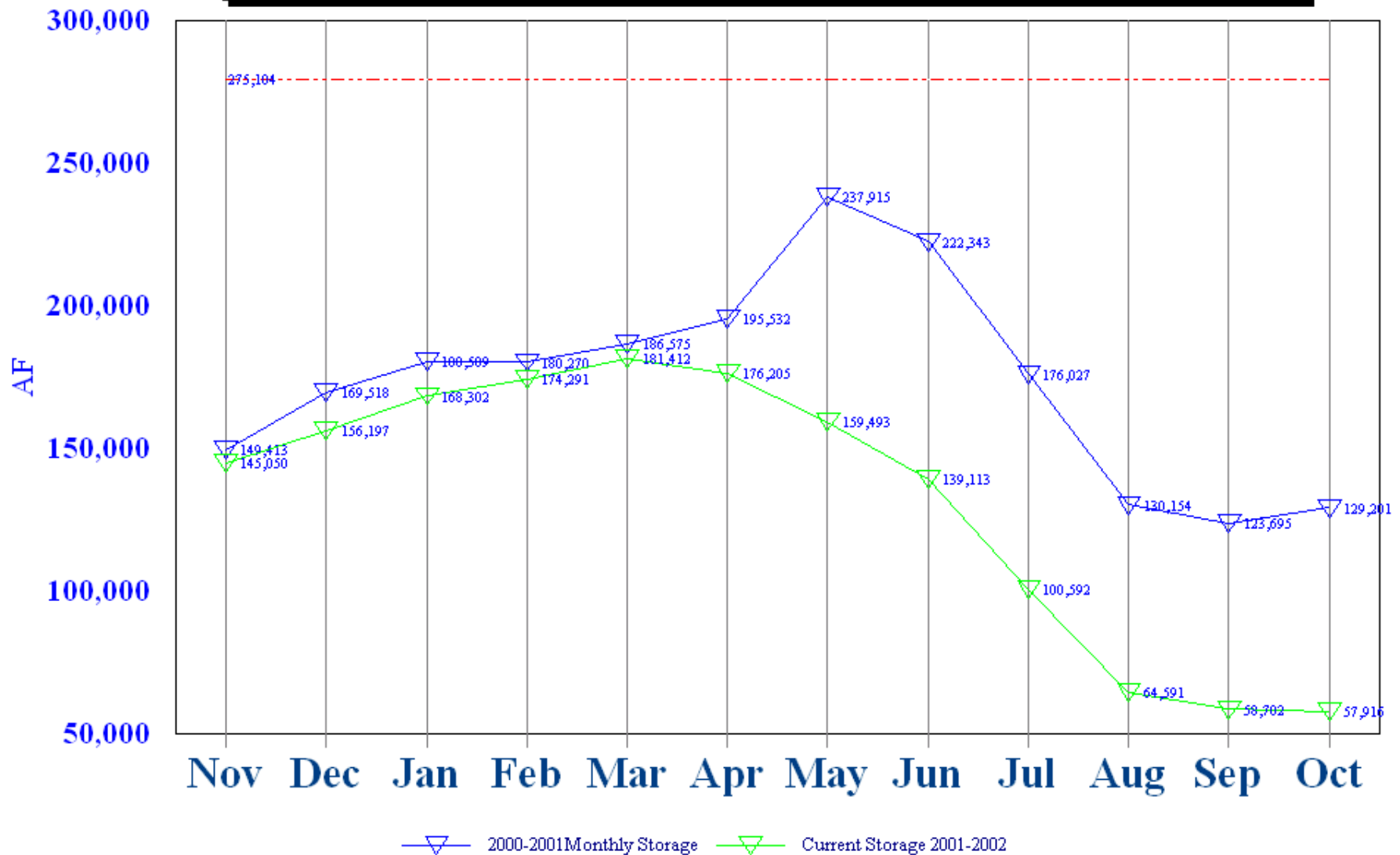


\*Empire,Riverside,Jackson,Prewitt,N.Sterling,Julesburg. by jhl



# Reservoir Storage above Kersey

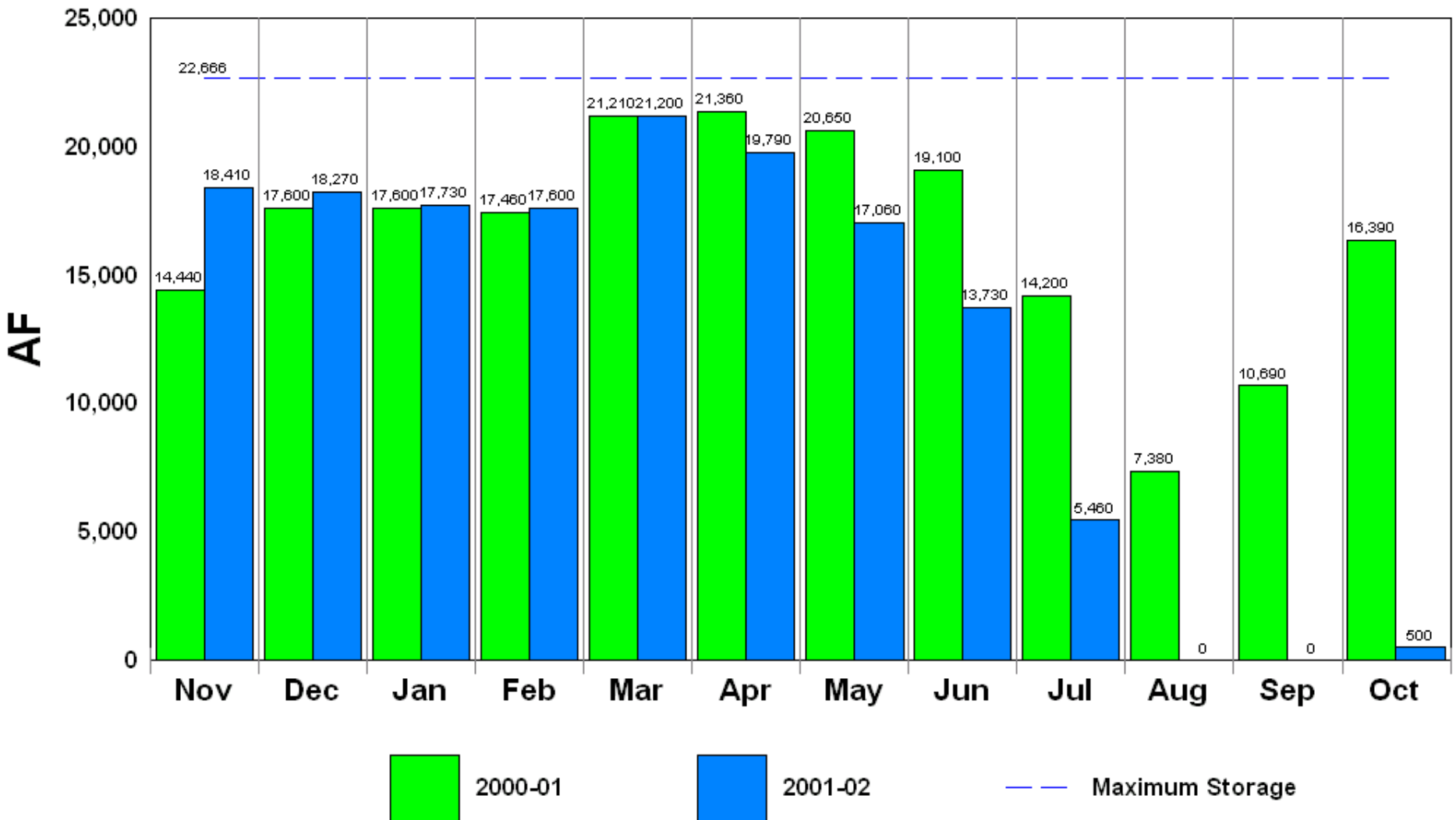
Selected Reservoirs\*



\*Barr, Cobb, FossilCrk, Halligan, Marshall, Milton, Union, Standley, LowerLatham, Boyd, Loveland, Windsor, HorseCrk, Prospect. by jhl

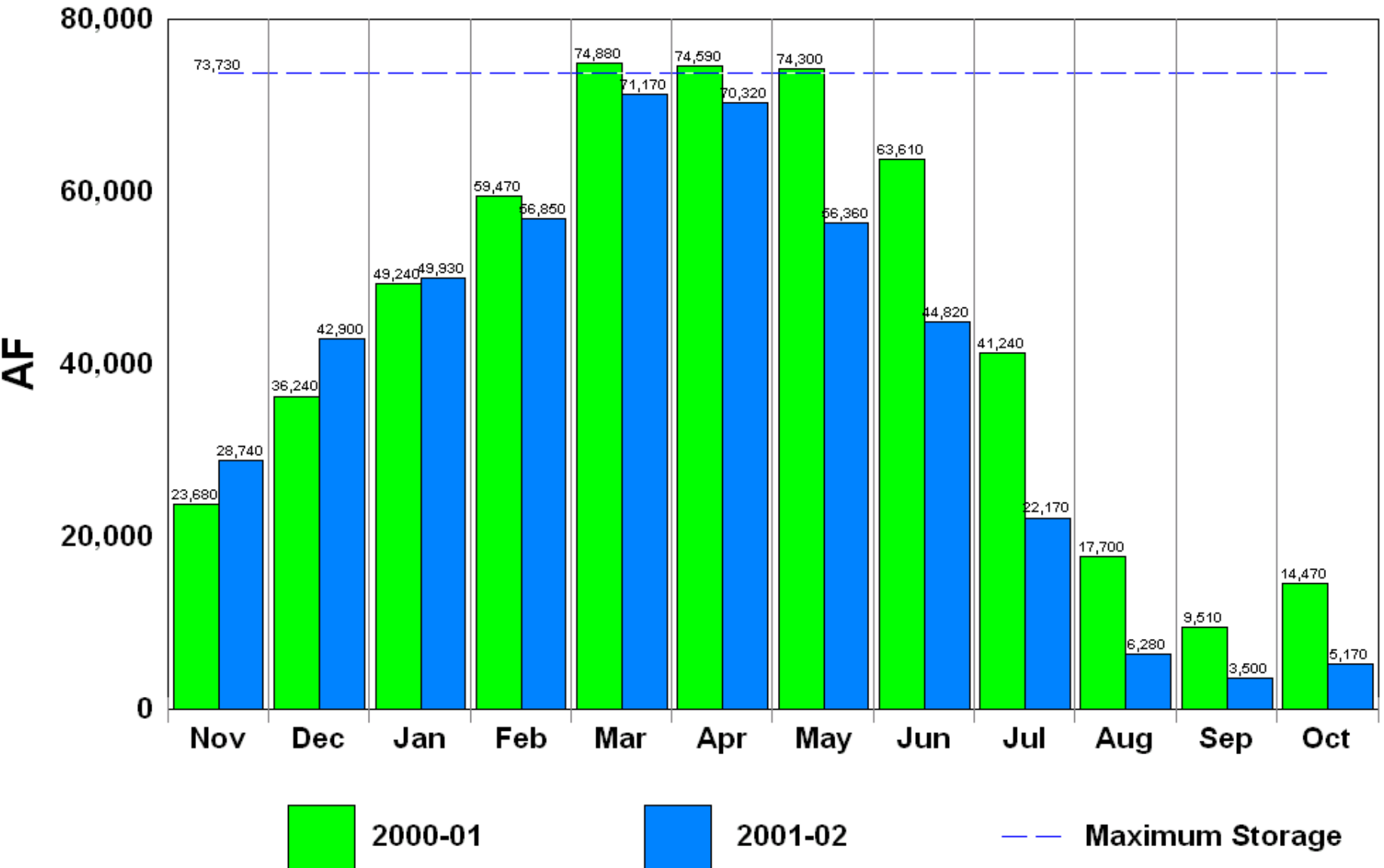
# Julesburg Reservoir

(Agricultural)



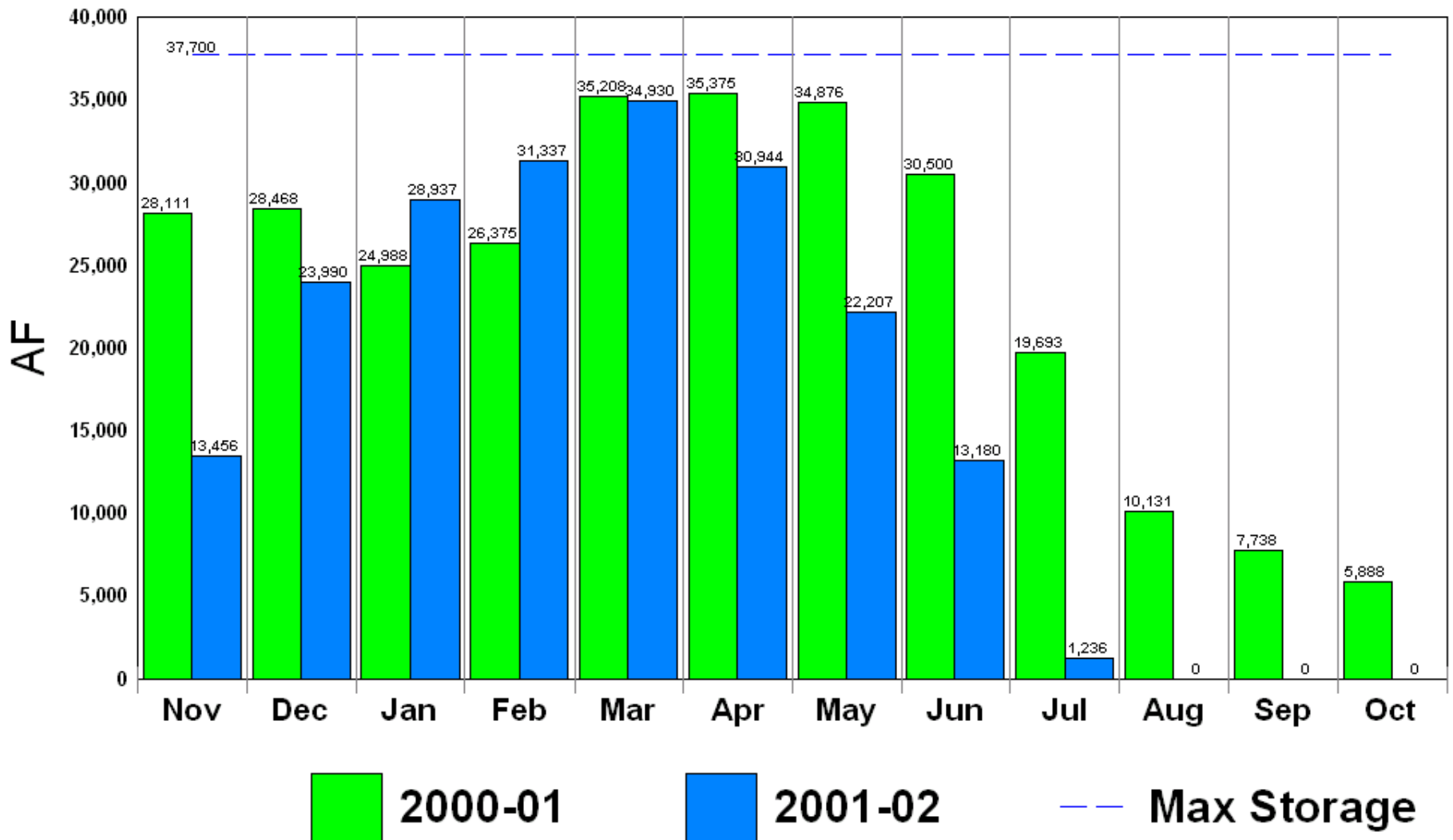
# N. Sterling Reservoir

(Agricultural)



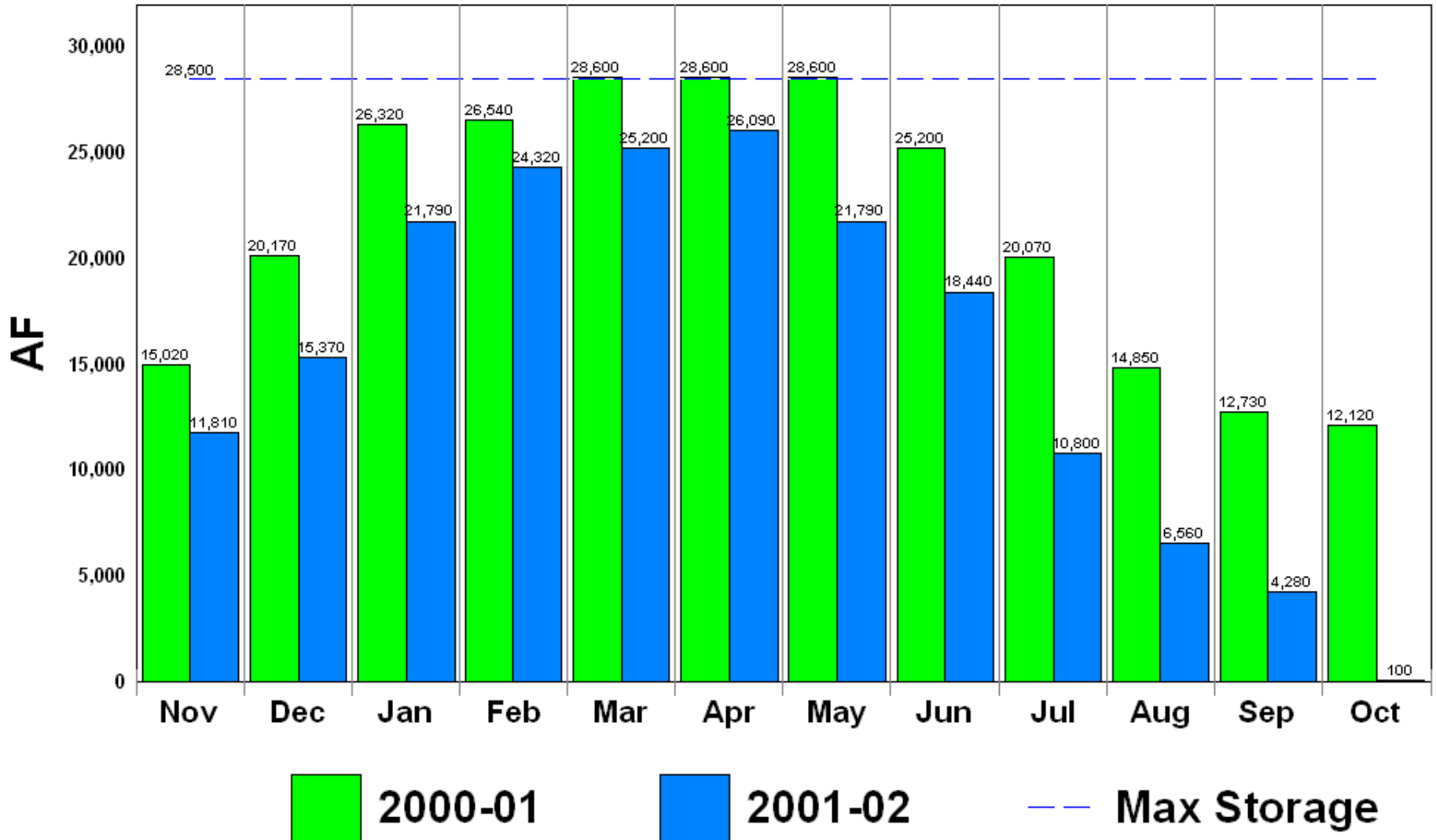
# Empire Reservoir

(Agricultural)



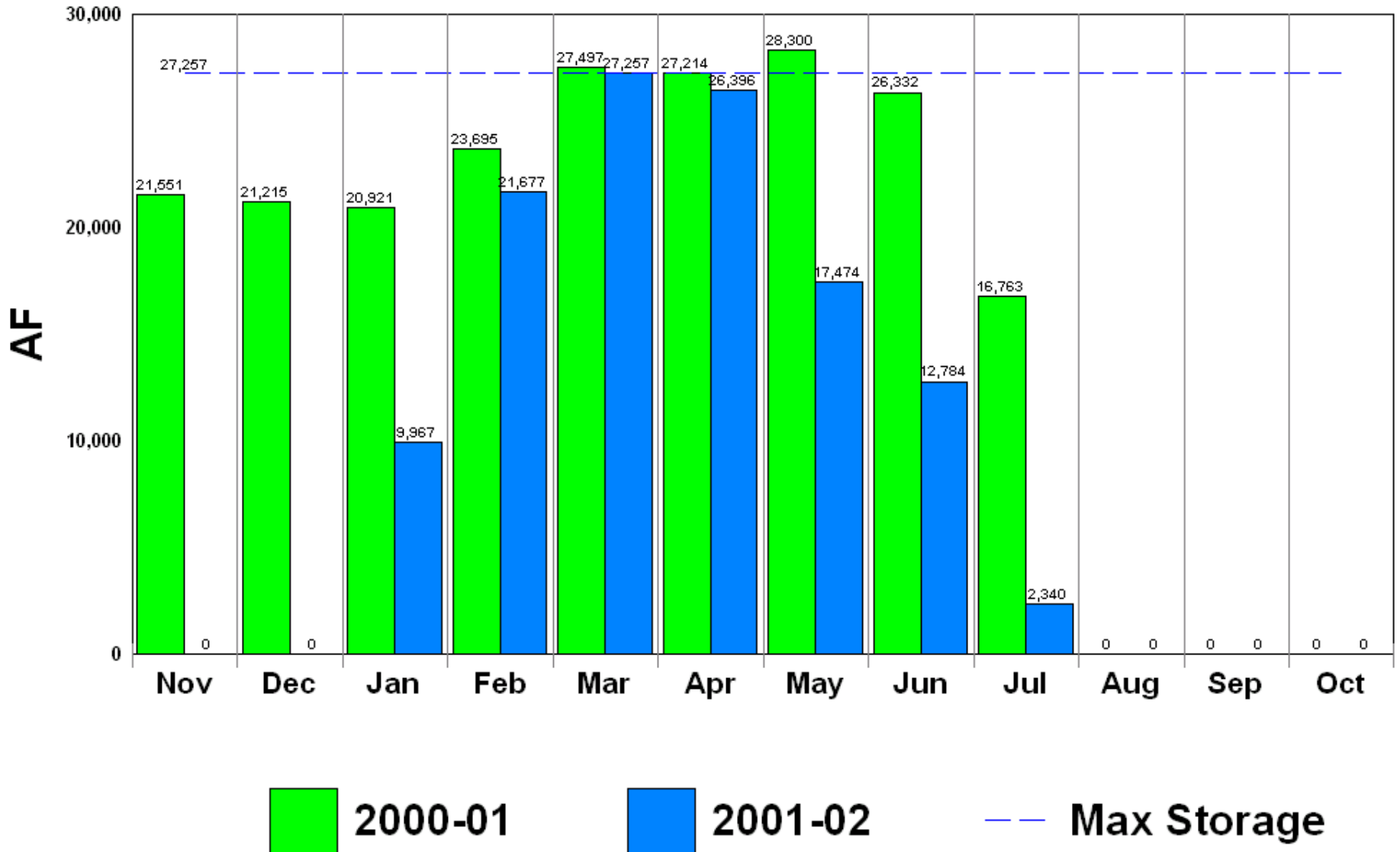
# Prewitt Reservoir

(Agricultural)



# Jackson Reservoir

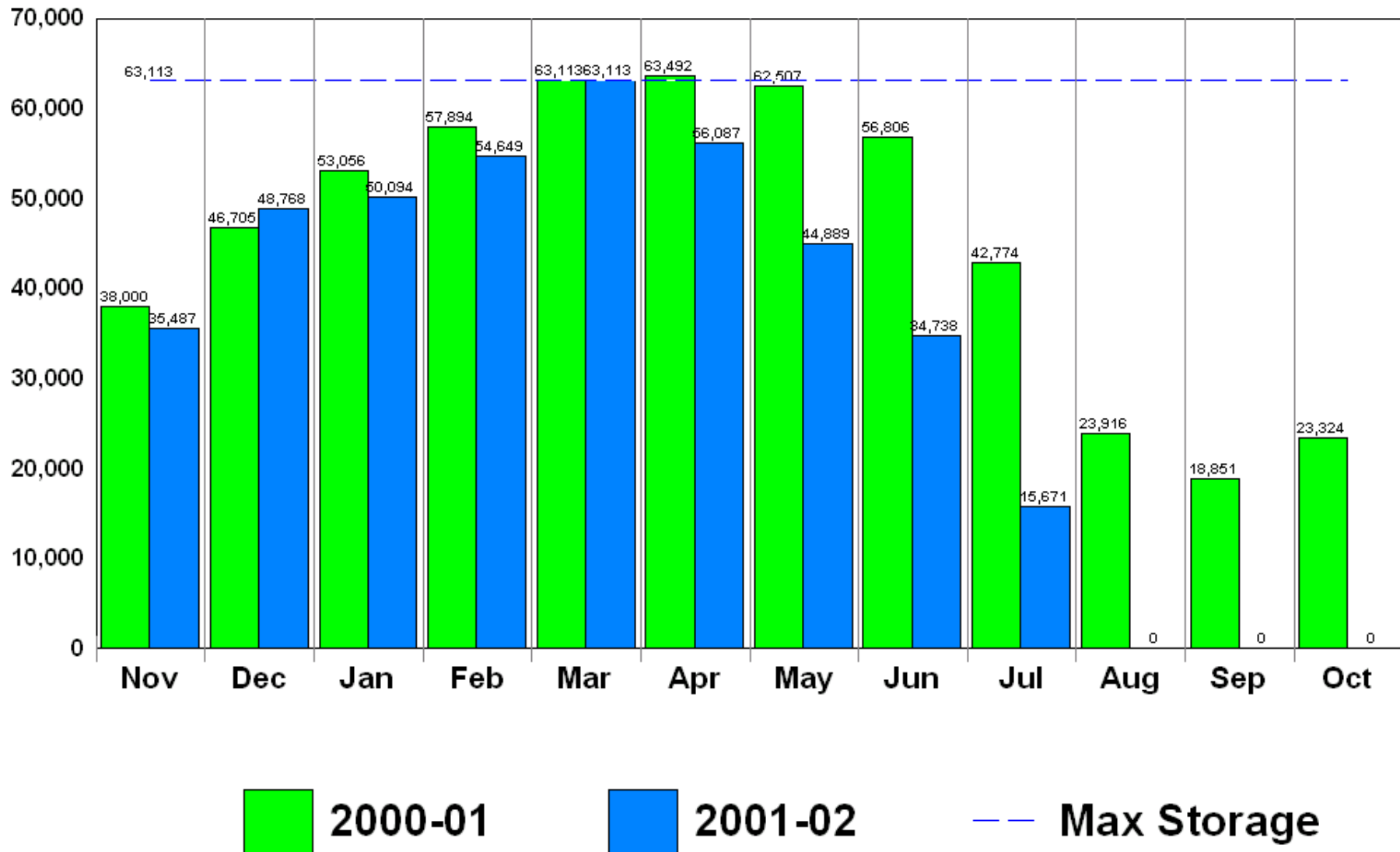
(Agricultural)





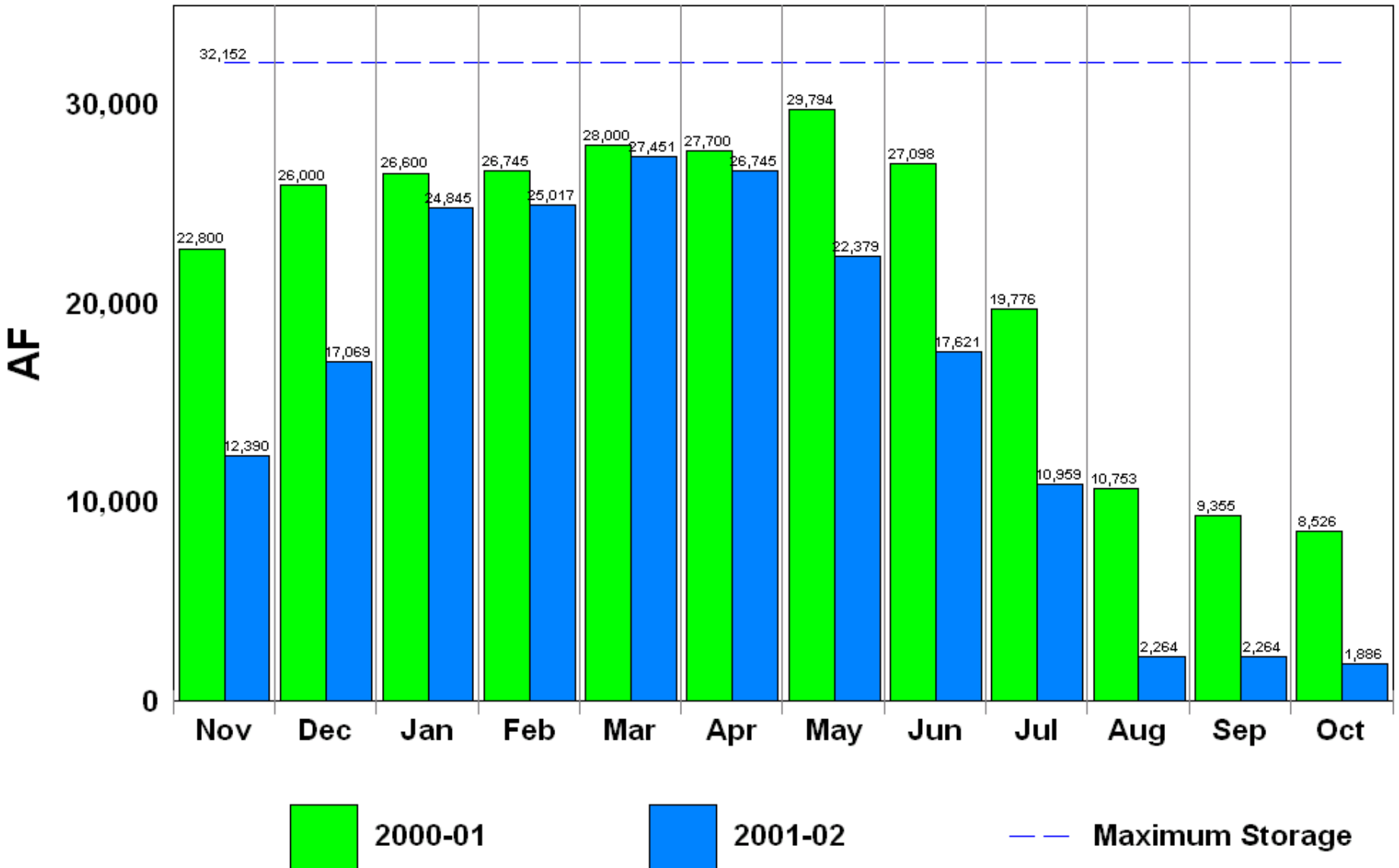
# Riverside Reservoir

(Agricultural)



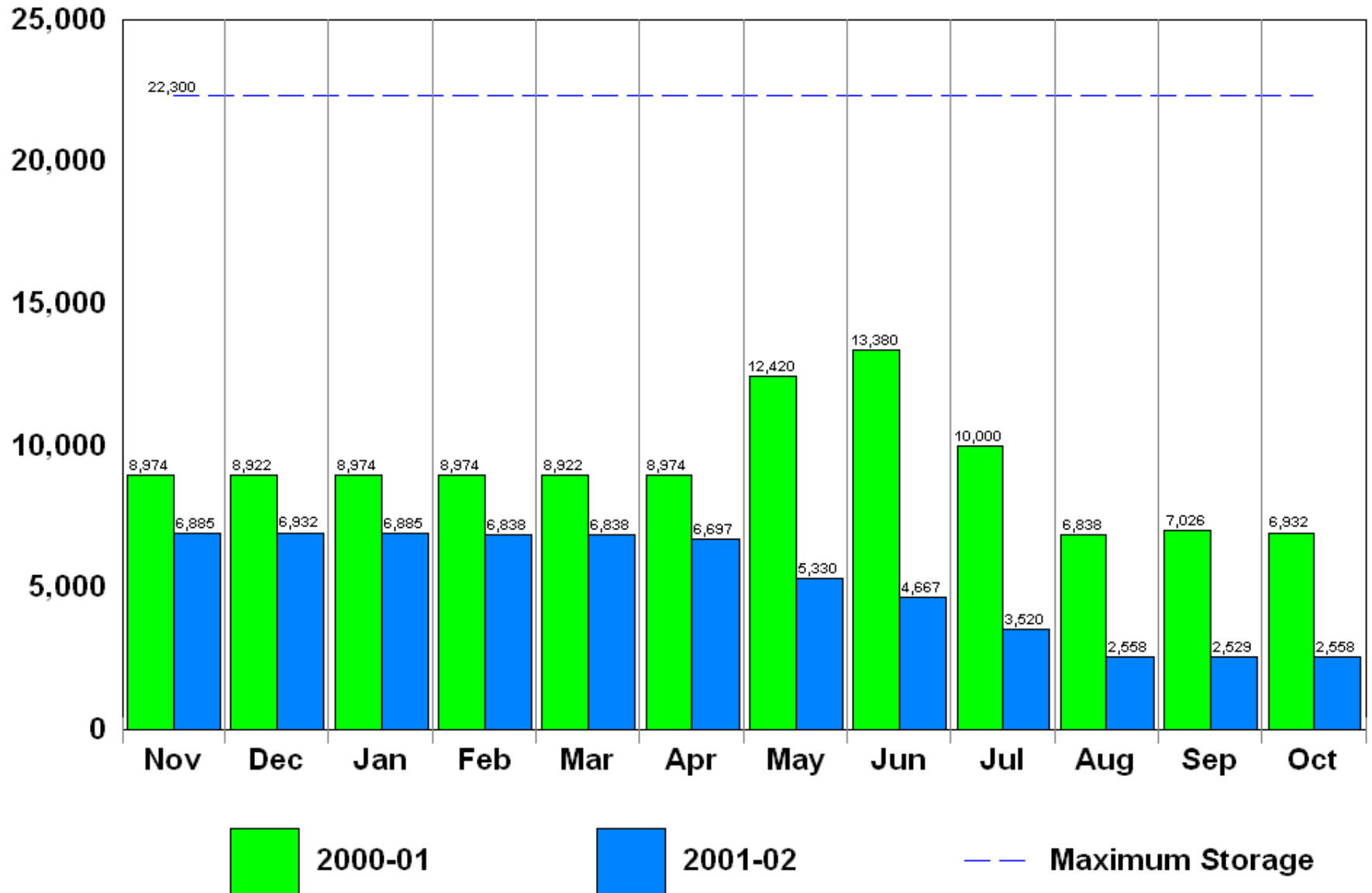
# Barr Lake

(Agricultural)



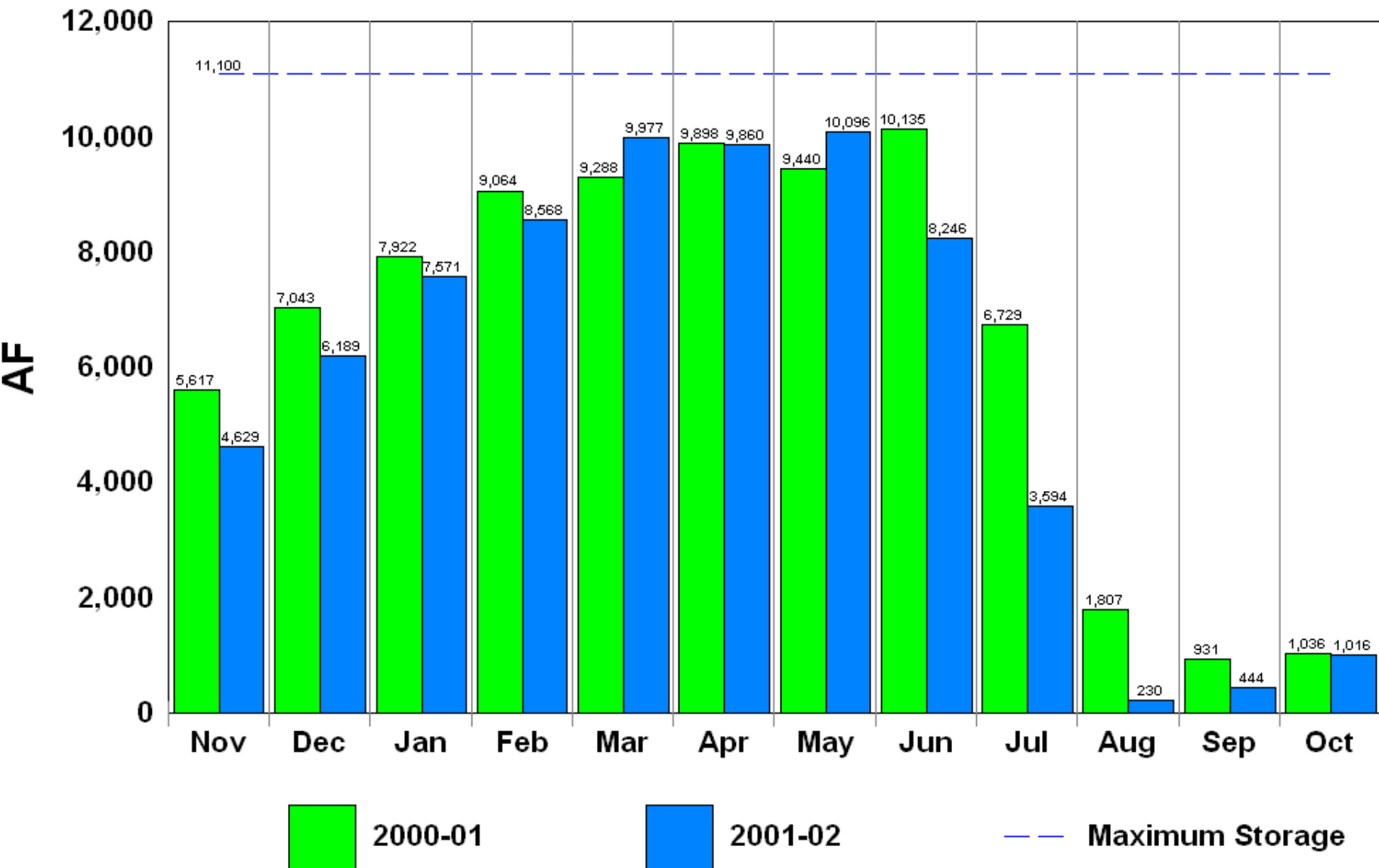
# Cobb Lake

(Agricultural)



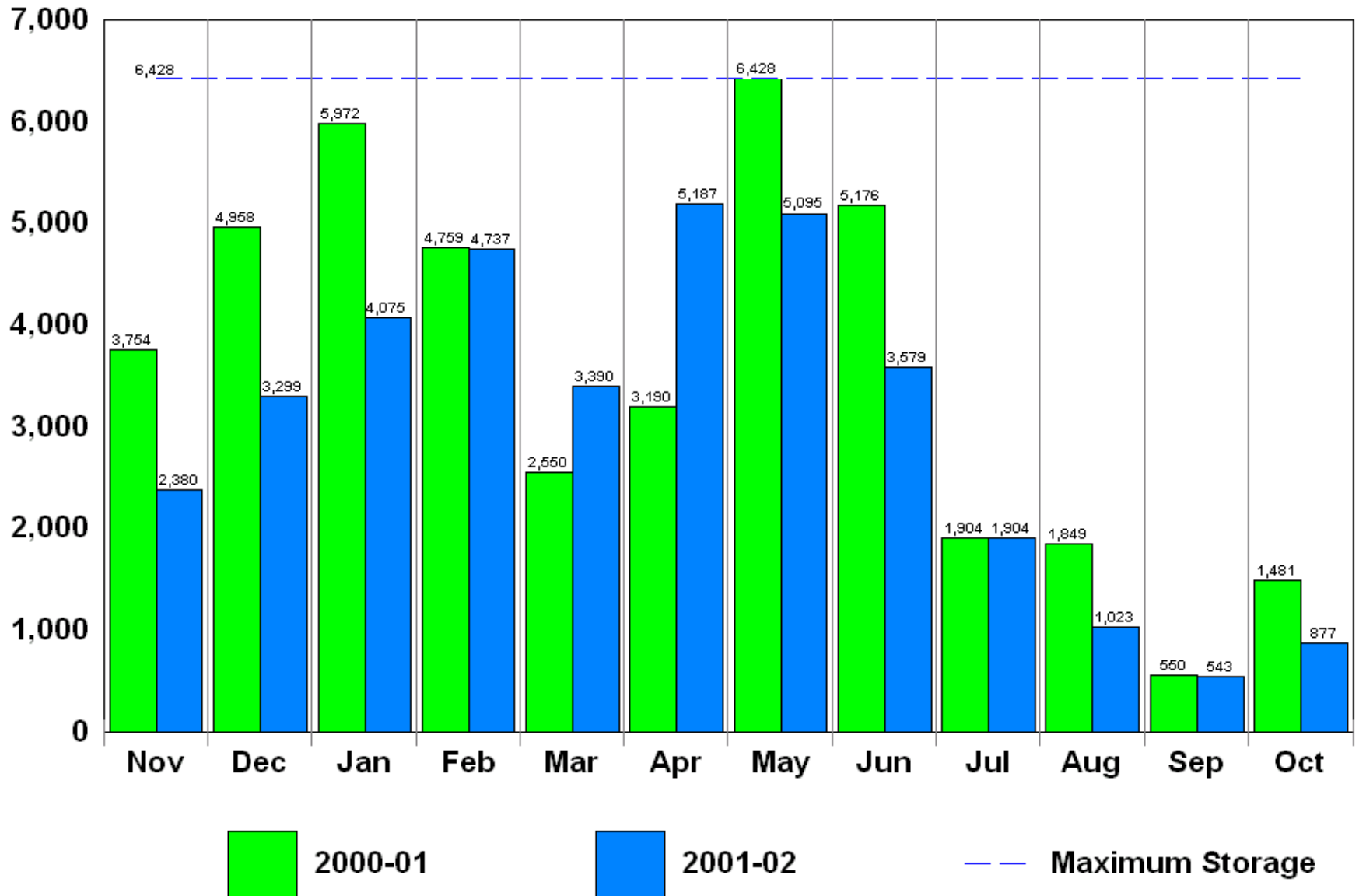
# Fossil Creek Reservoir

(Agricultural)



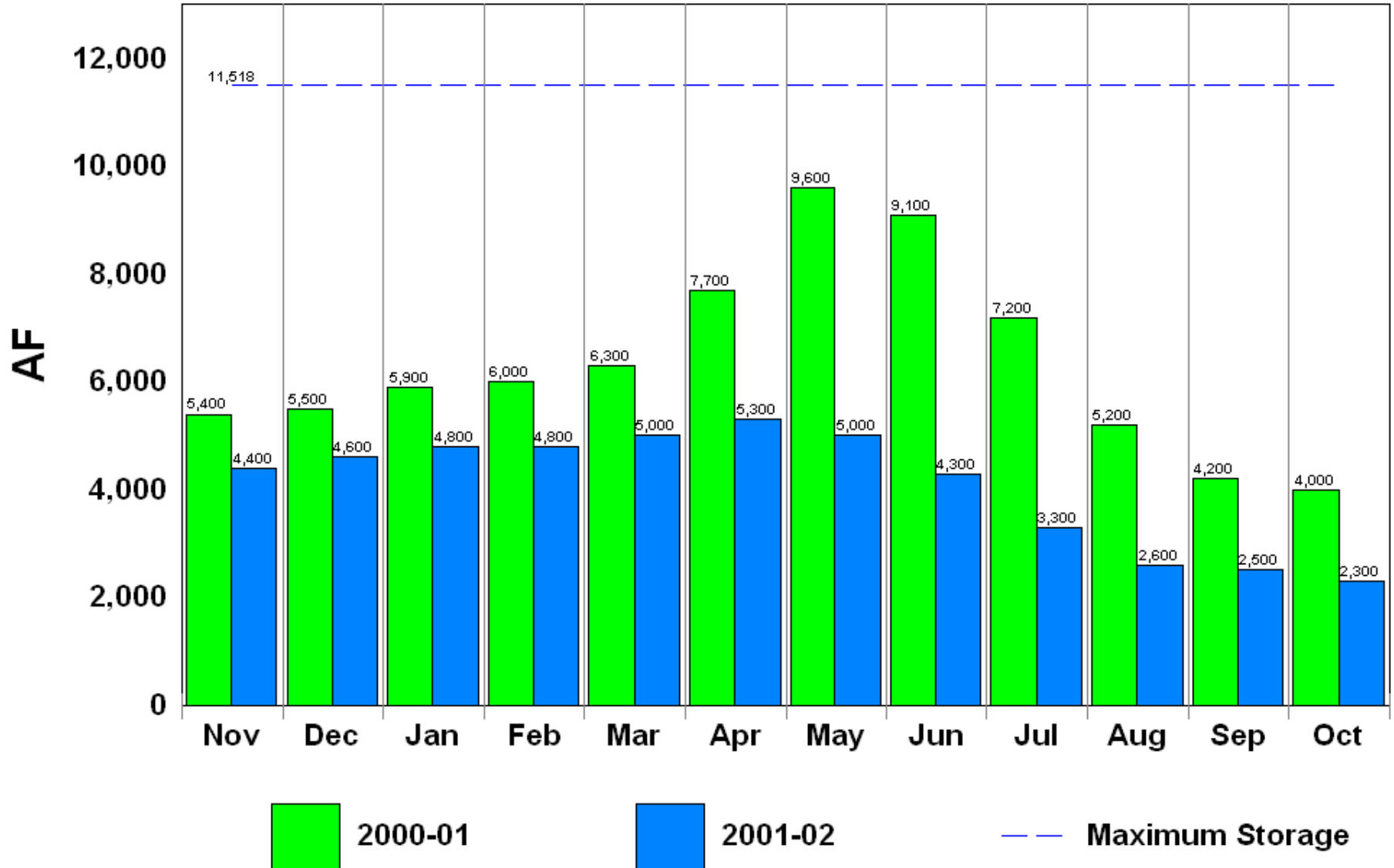
# Halligan Reservoir

(Agricultural)



# Marshall Lake

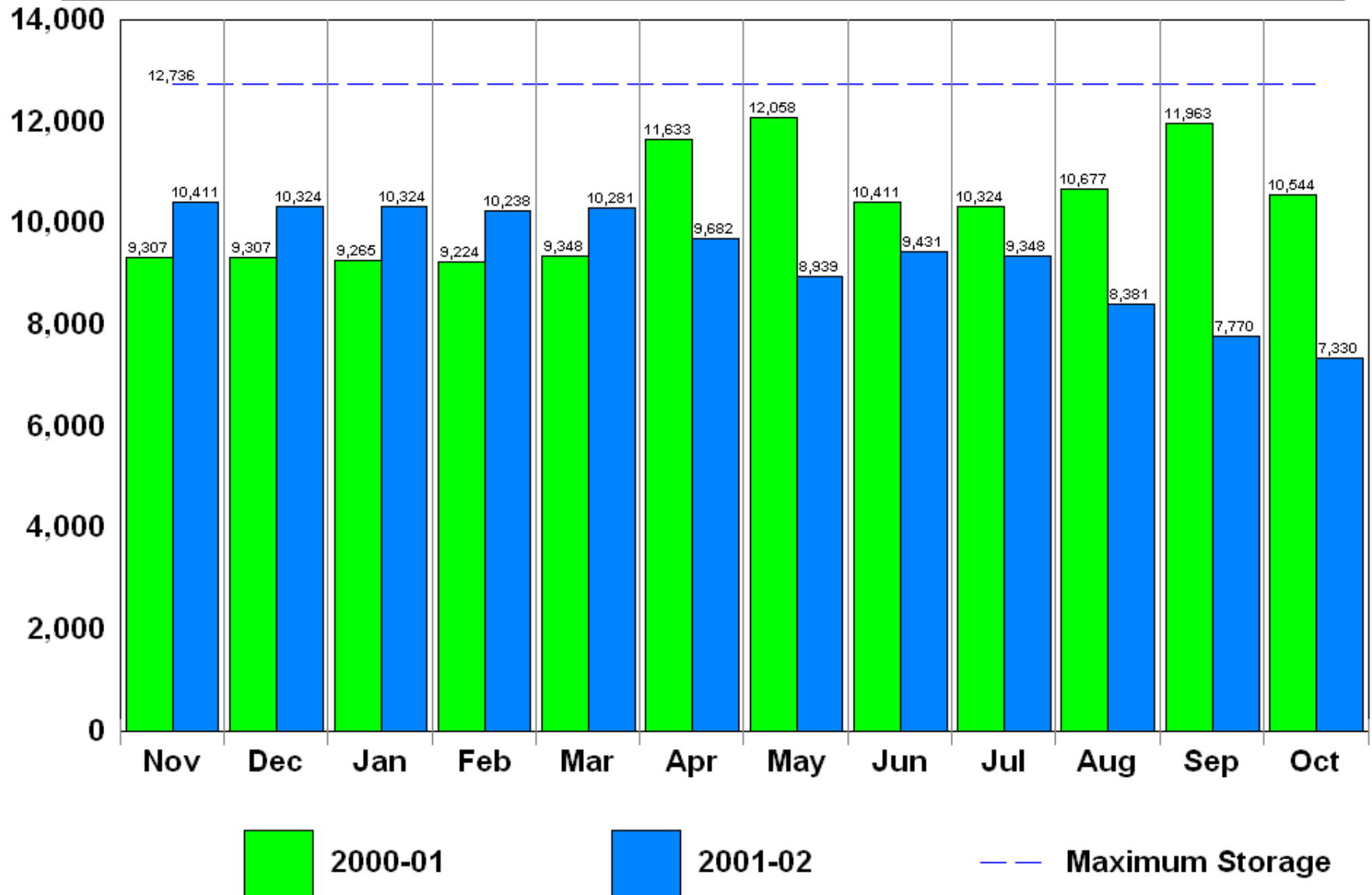
(Agricultural)





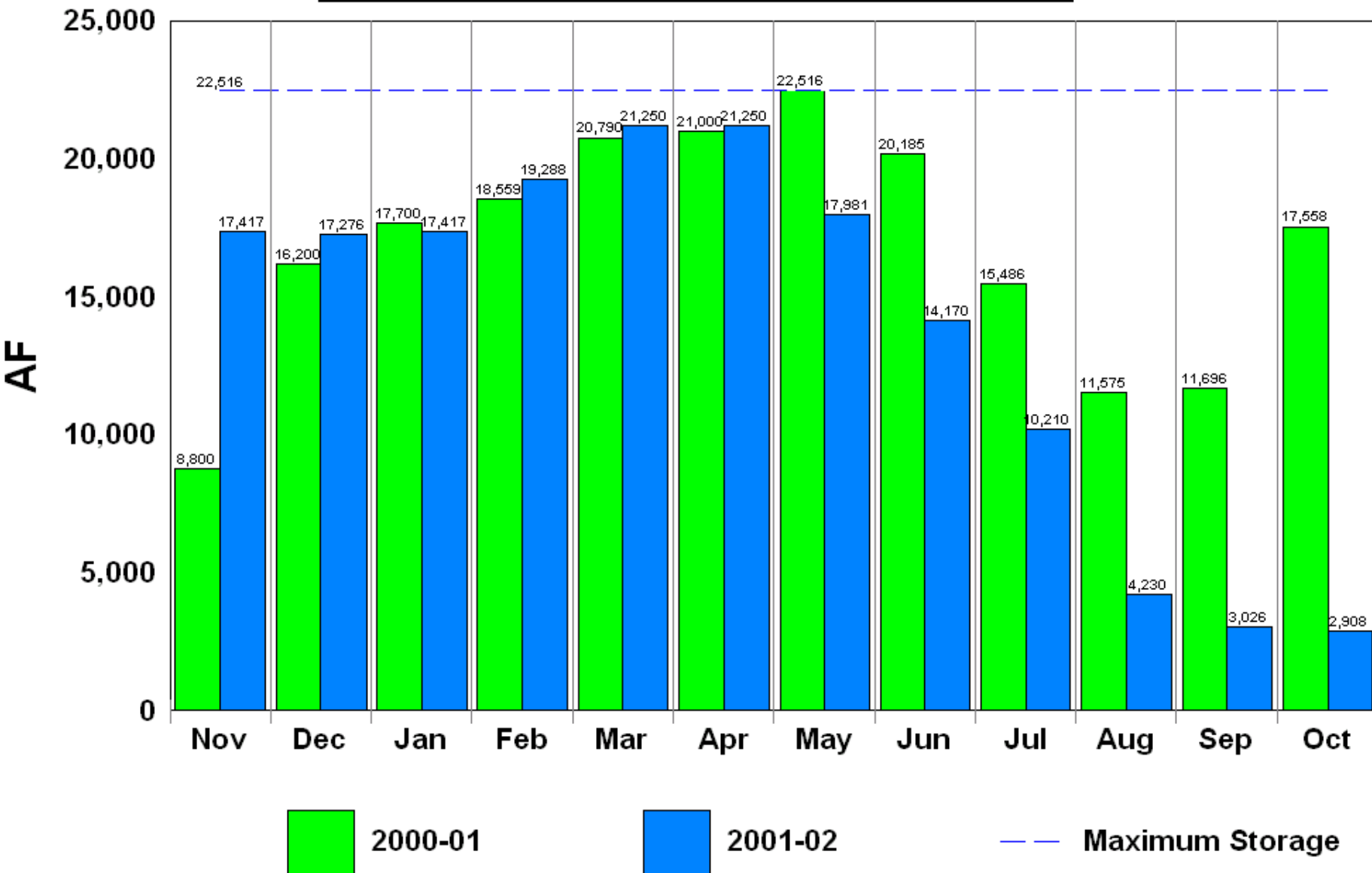
# Loveland Greeley Reservoir

(Agricultural)



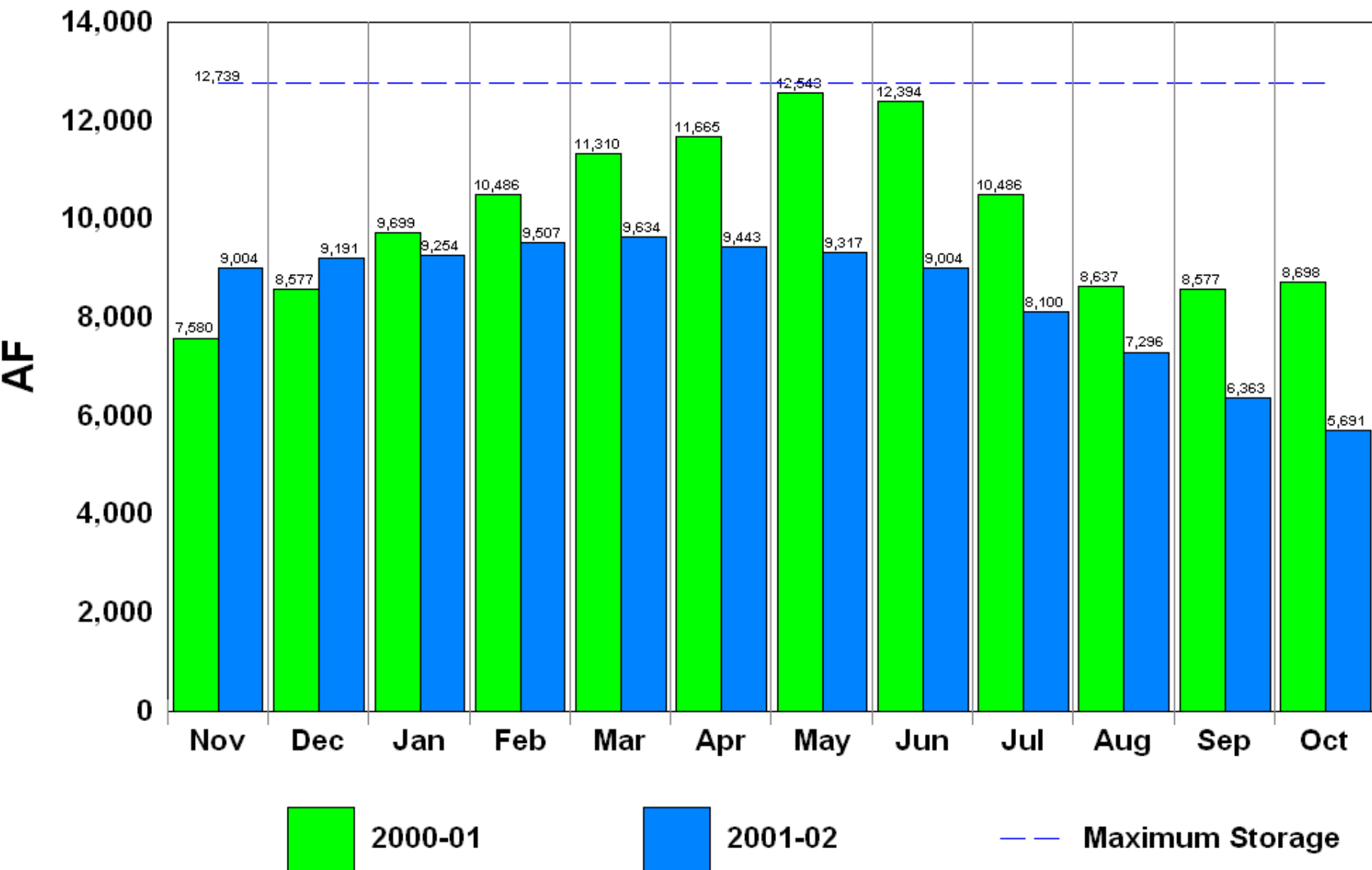
# Milton Reservoir

(Agricultural)



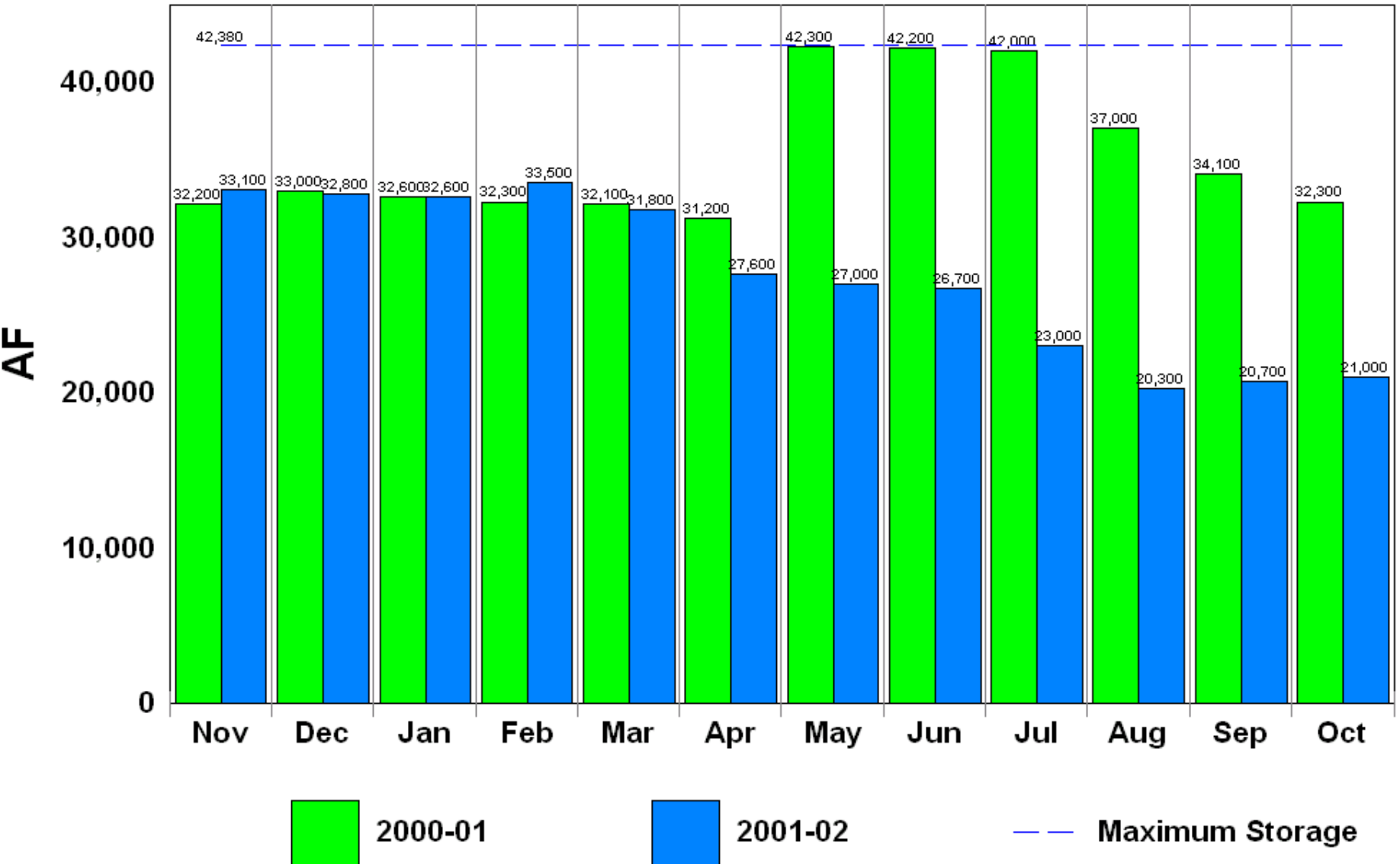
# Union Reservoir

(Agricultural)



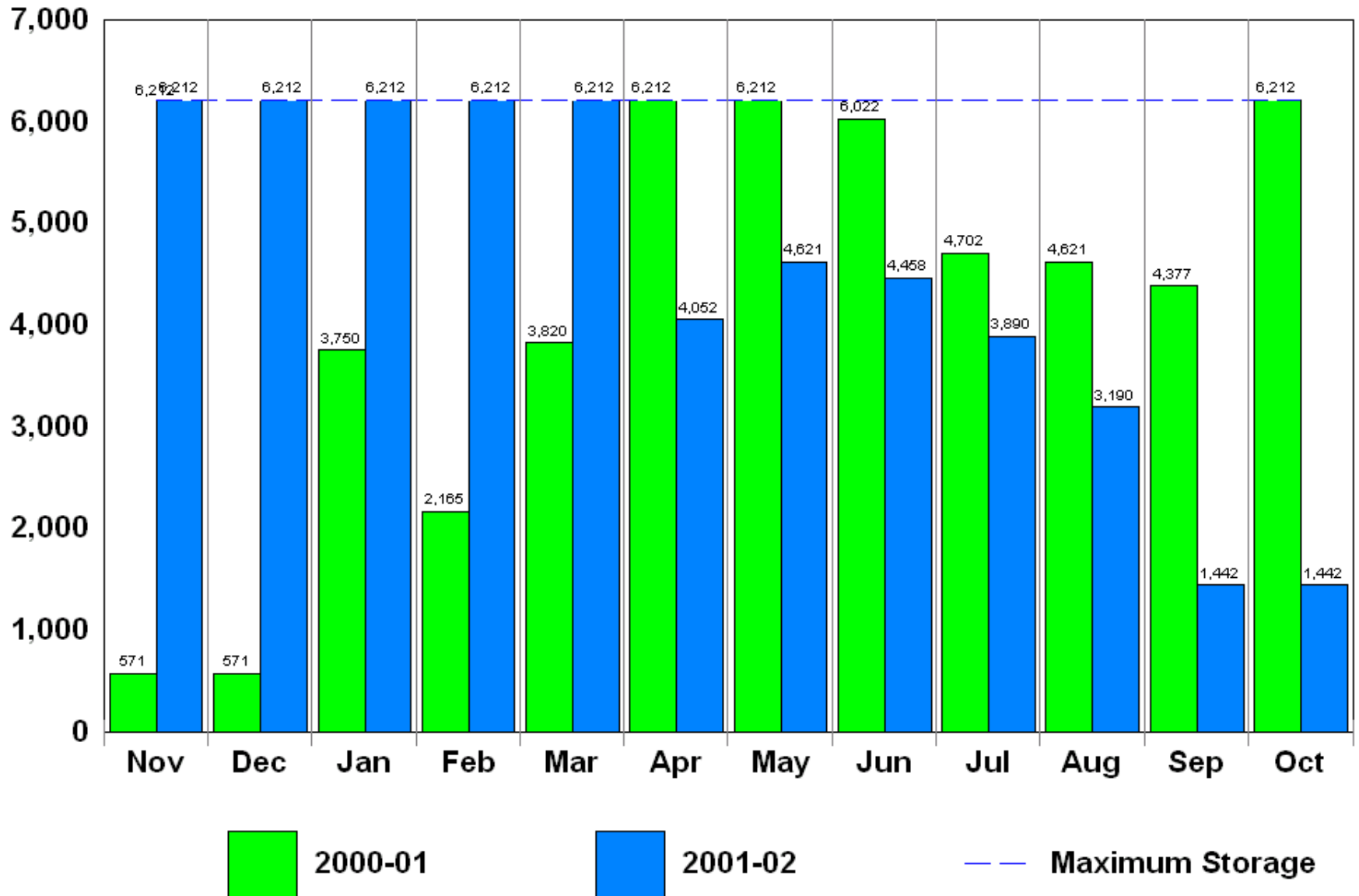
# Standley Lake

(Agricultural)



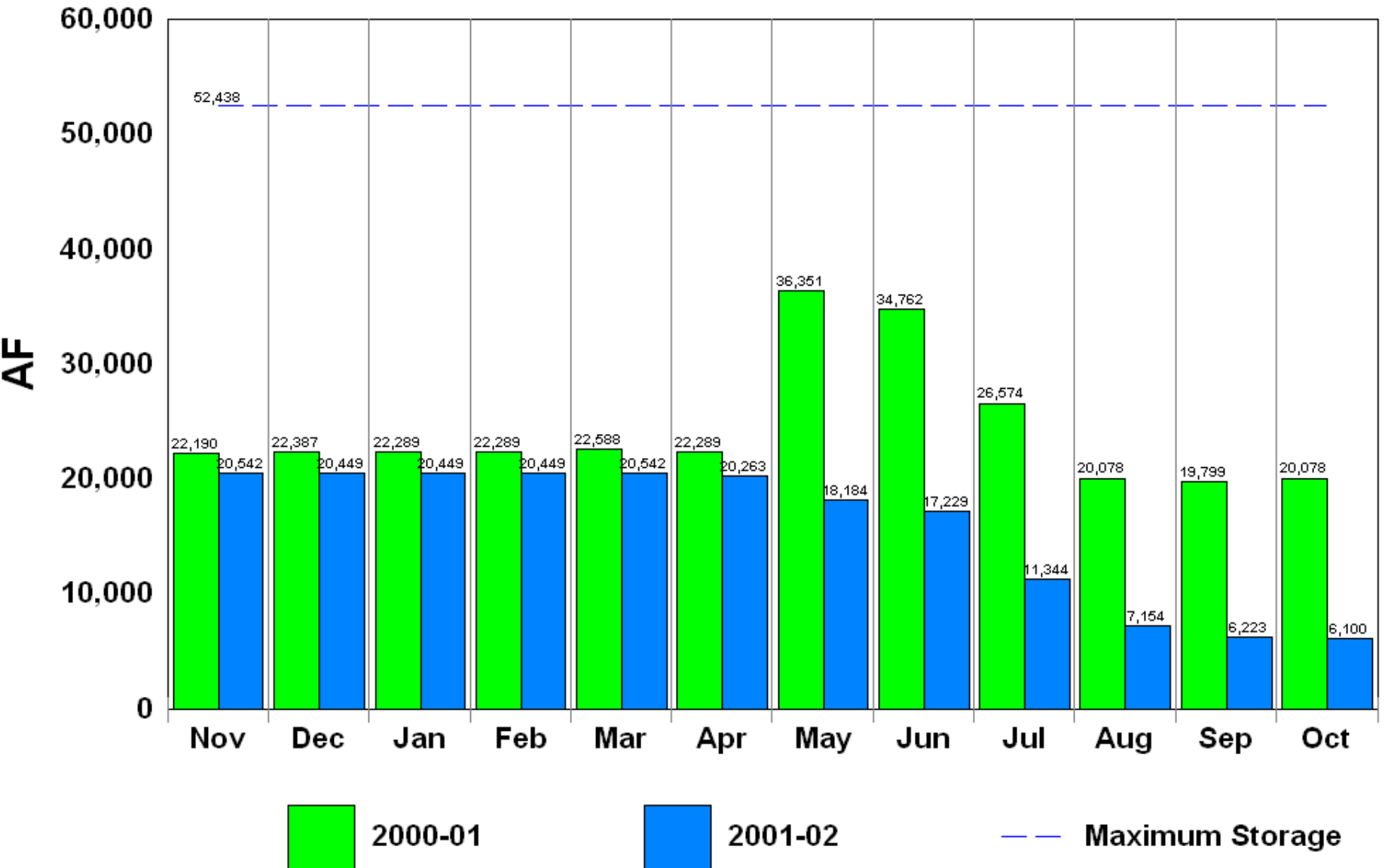
# Lower Latham Reservoir

(Agricultural)



# Boyd Lake

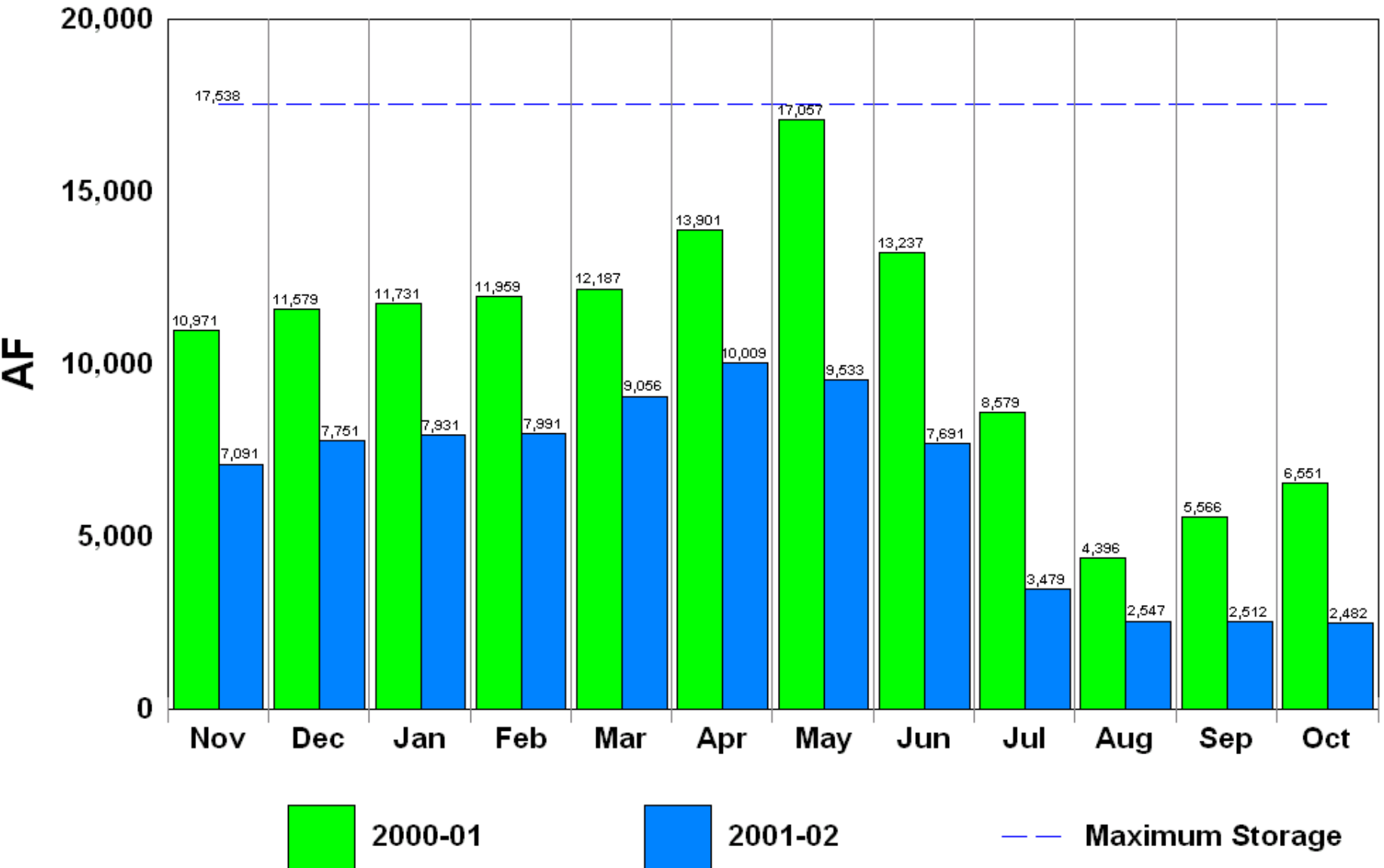
(Agricultural)





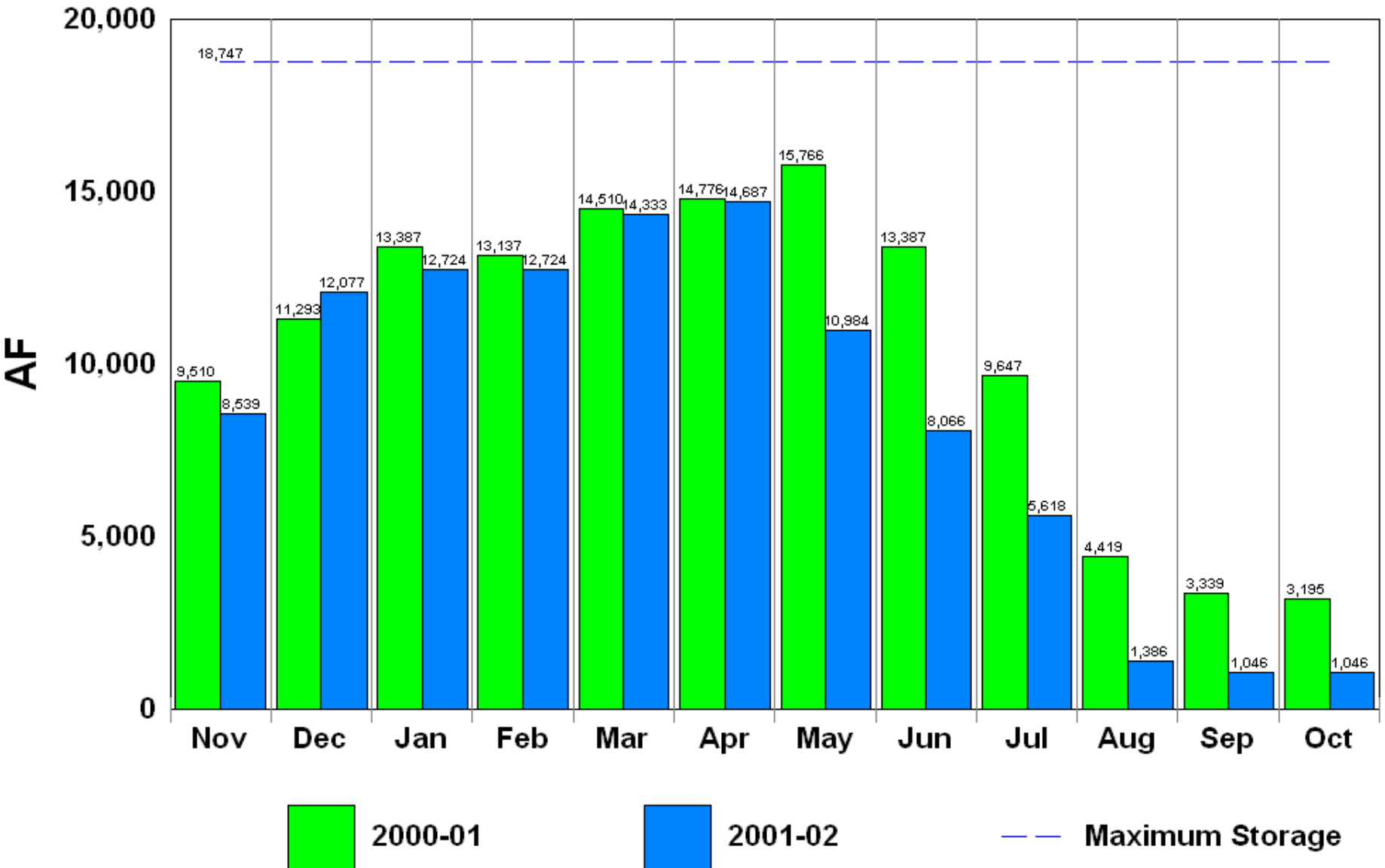
# Windsor Reservoir

(Agricultural)



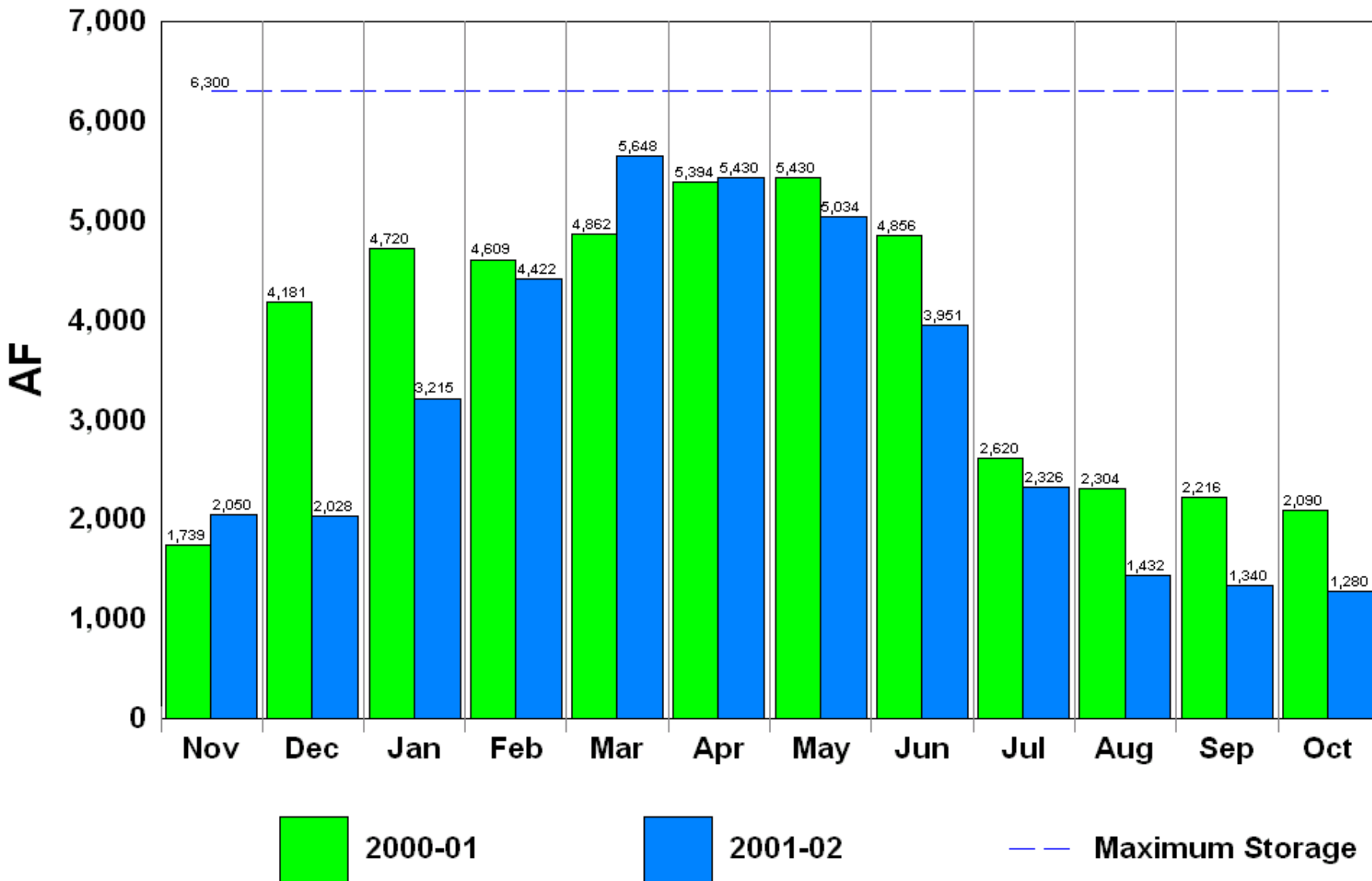
# Horse Creek Reservoir

(Agricultural)



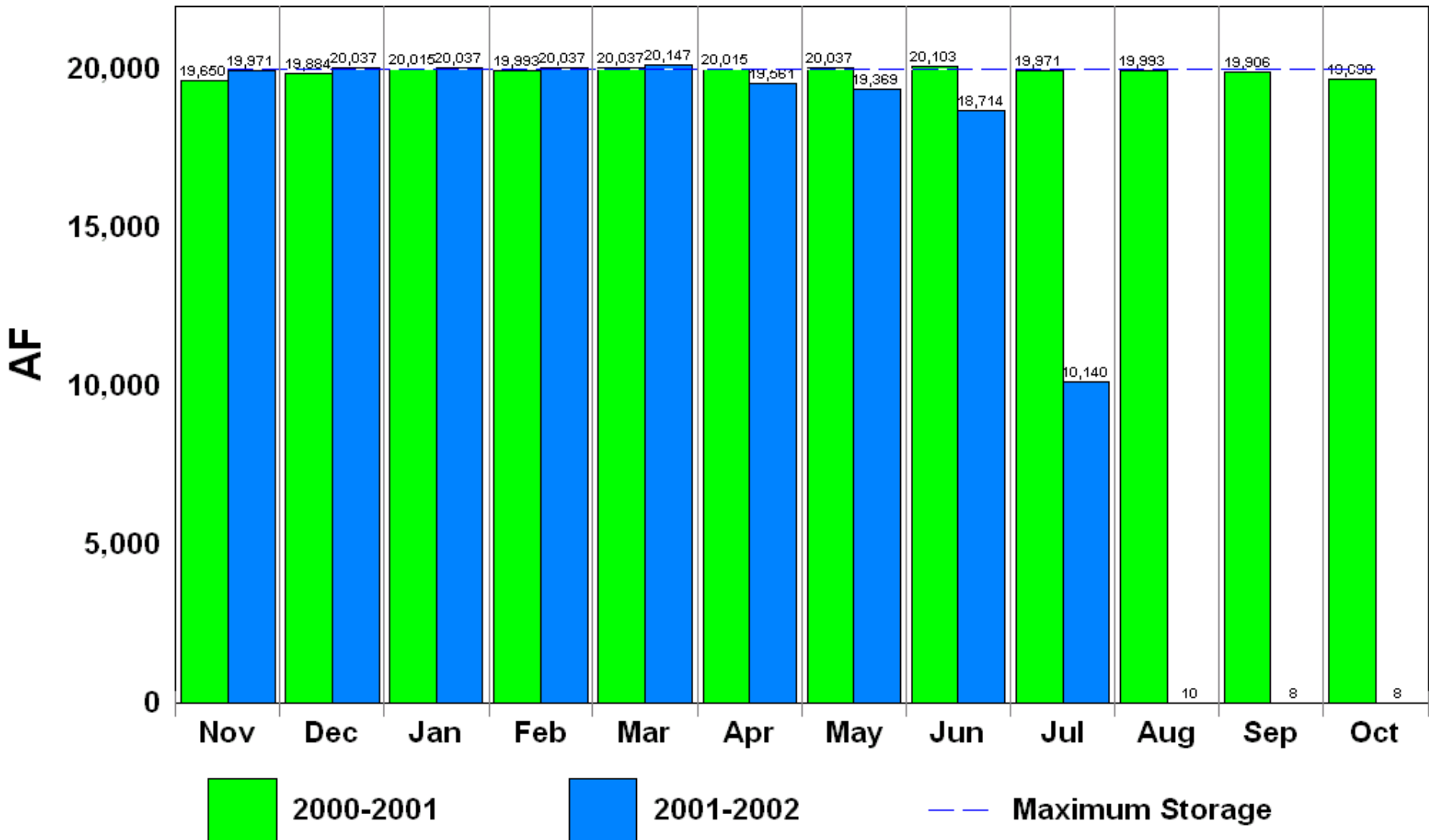
# Prospect Reservoir

(Agricultural)



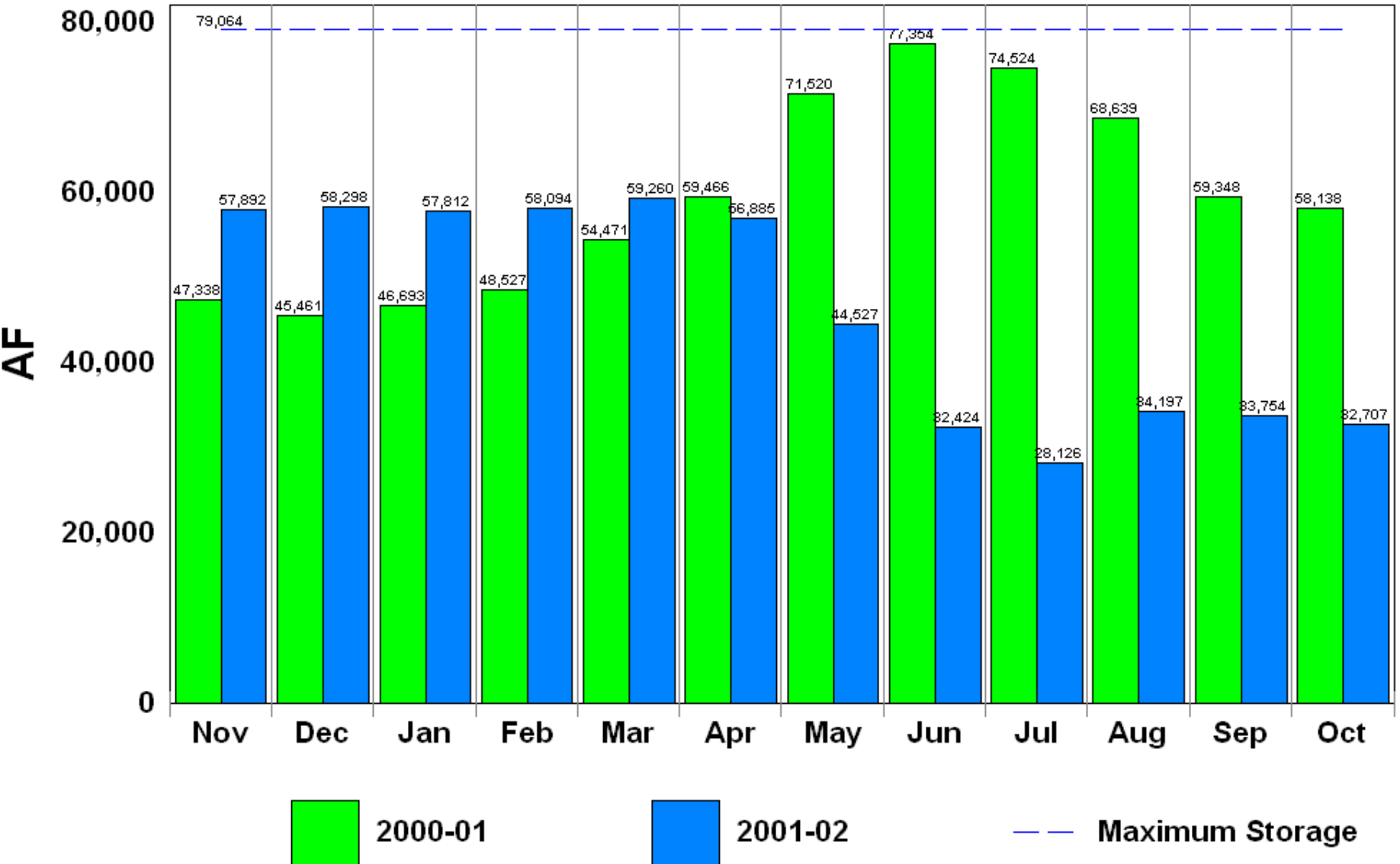
# Antero Reservoir

(Municipal)



# Cheesman Reservoir

(Municipal)



# Spinney Mountain Reservoir

(Municipal)

