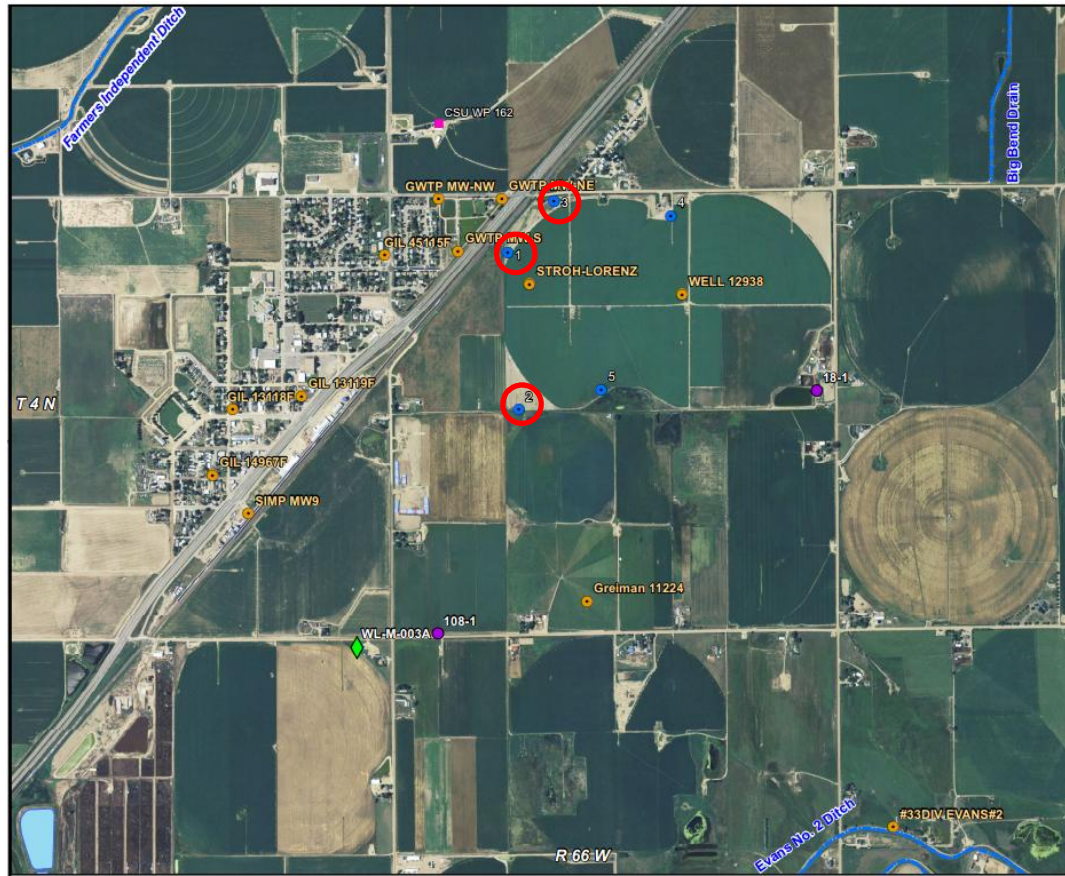
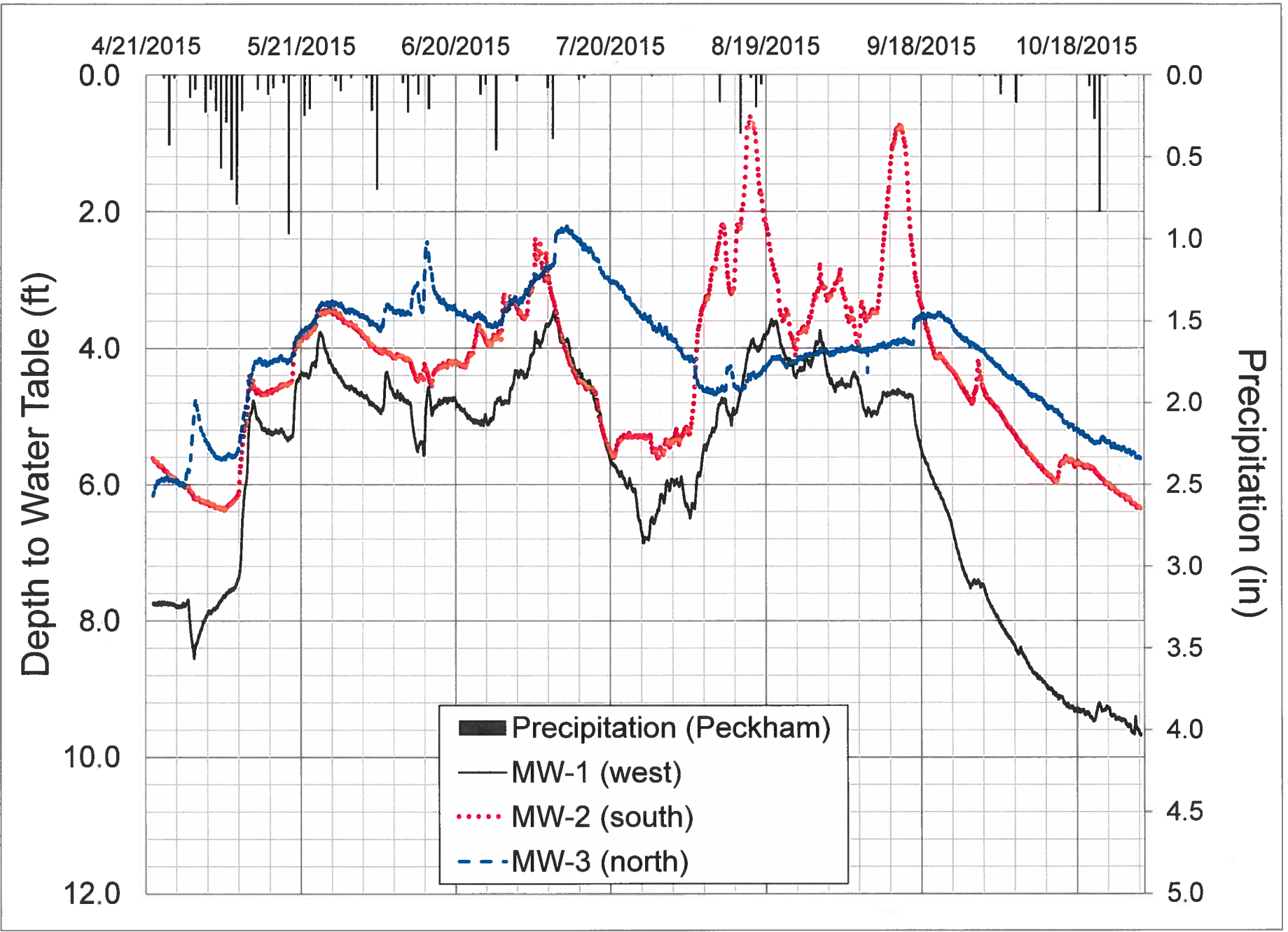


Lorenz Field Groundwater Monitoring, CSU

- Recording water levels in 3 monitoring wells (MW1, MW2, MW3: see map below) began on April 22, 2015. Levels are recorded using Hobo ONSET data loggers. Recording frequency is every 15 minutes.
- Charts showing depth to water table for each of the monitoring wells are shown on Pages 2, 3, and 4. Daily precipitation (inches) from the Peckham CoAgMet station also is plotted for each chart.
- A chart showing depth to water table for all monitoring wells is shown on Page 5.
- Please contact Ryan Bailey (rtbailey@engr.colostate.edu) (CEE Dept, CSU) with any questions.



well o/p
1/5/2015



well off
11/5/2015

