



United States Department of Agriculture

Colorado Snow Surveys

Water Availability Task Force Meeting

Sept 22nd, 2020

NRCS Snow Survey and Water Supply Forecasting Program

Brian Domonkos

Hydrologist - Colorado Snow Survey Supervisor

720-544-2852 – brian.domonkos@usda.gov

Colorado Snow Survey [Webpage](#)



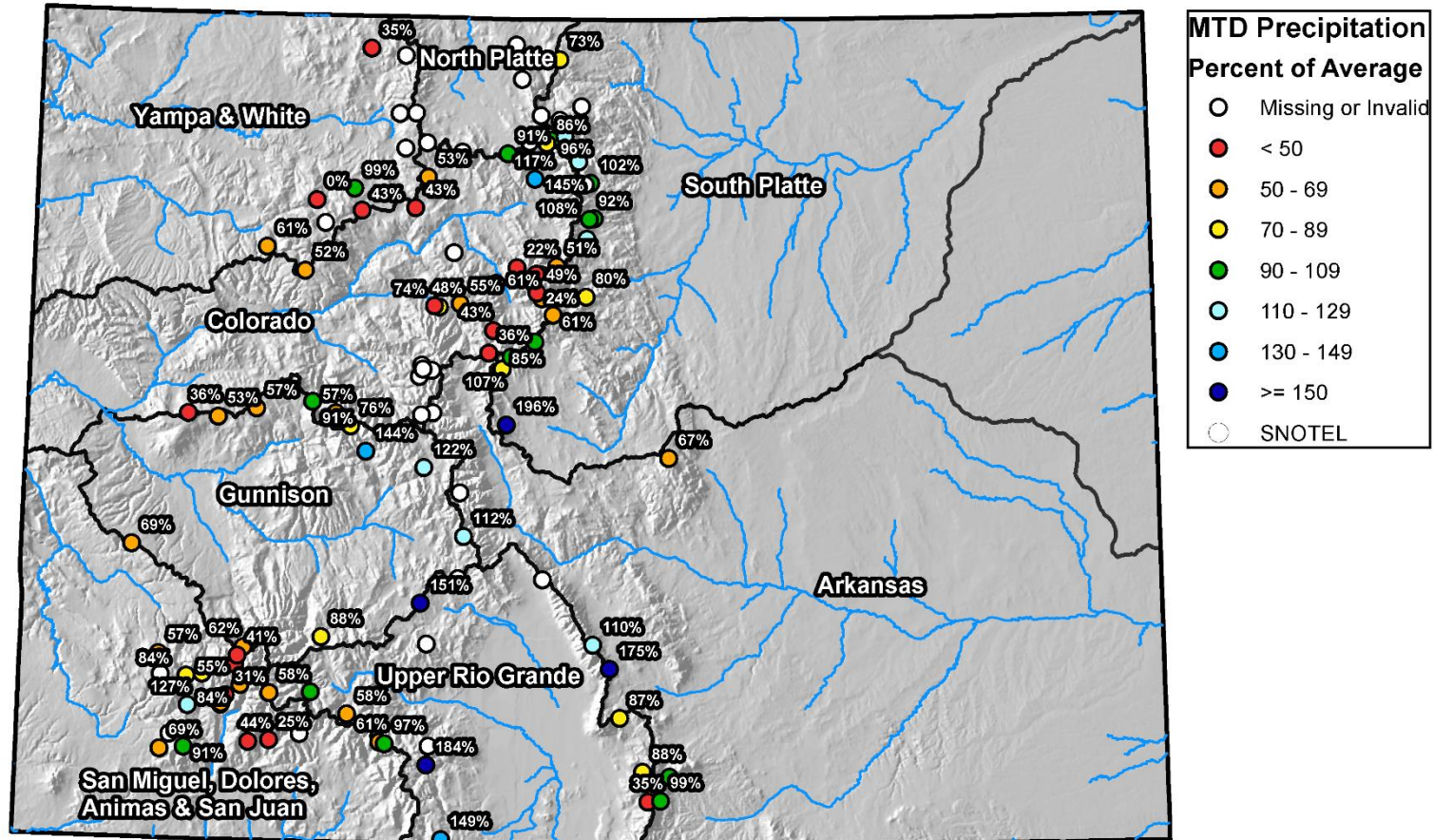
United States Department of Agriculture

Colorado Snow Surveys

Colorado Mountain Precipitation

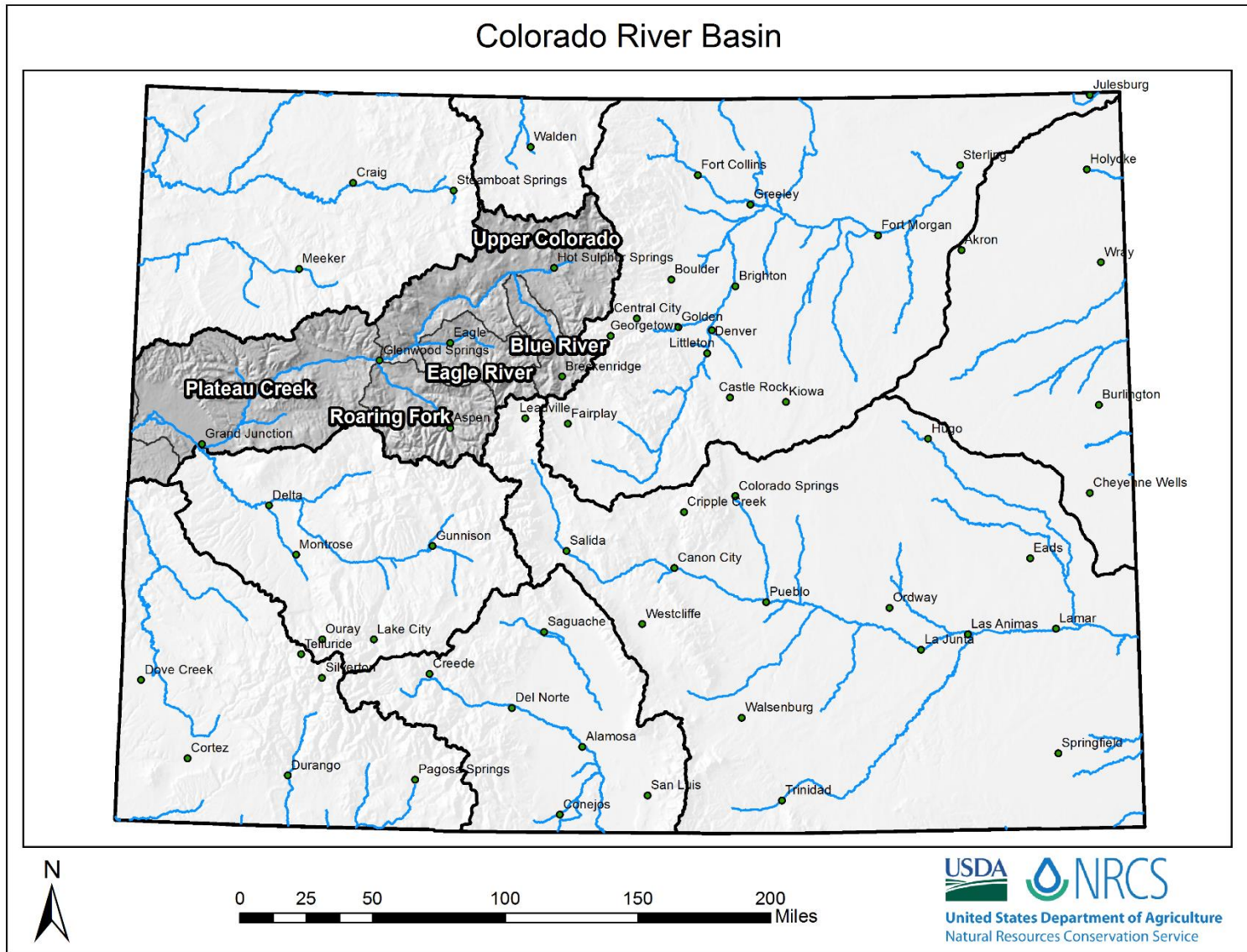
Colorado SNOTEL Month-to-Date Precipitation

Current as of Sep 21, 2020



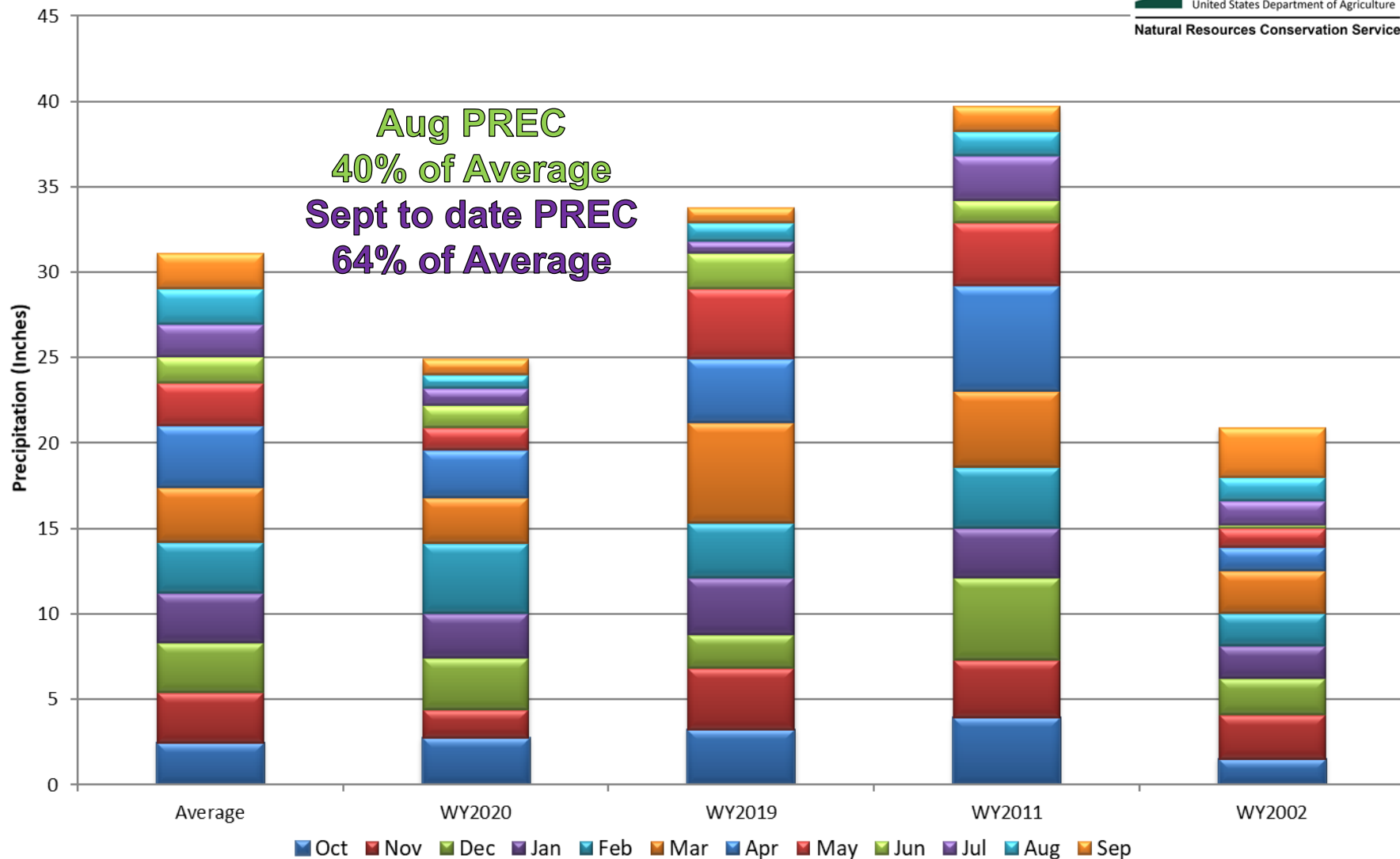
0 25 50 100 150 200 Miles

Major Basin Summary



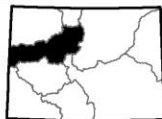
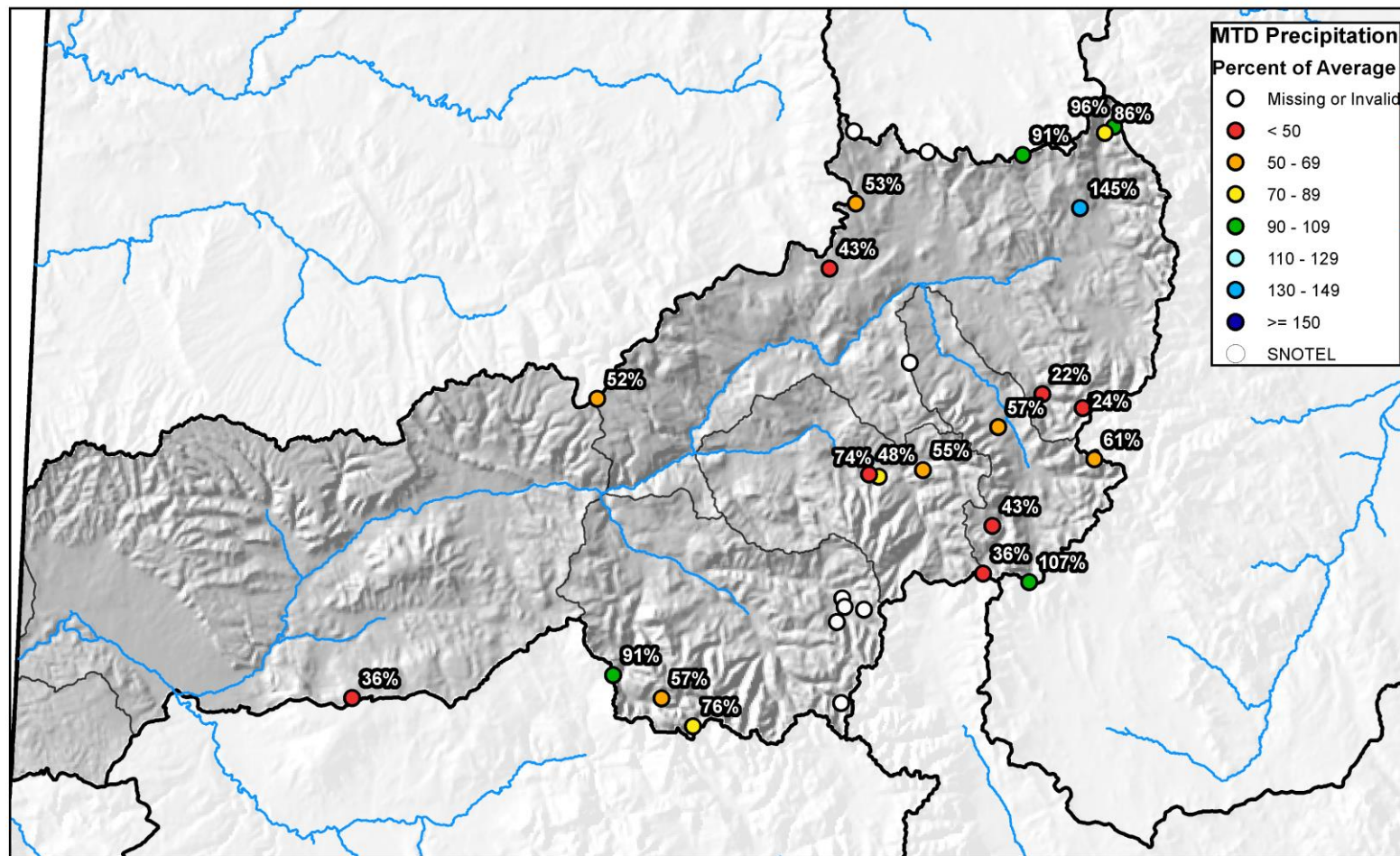
Upper Colorado River Basin High/Low Monthly Precipitation Summary

Based on Provisional SNOTEL data as of Sep 21, 2020



Upper Colorado River Basin Month to Date Precipitation Summary

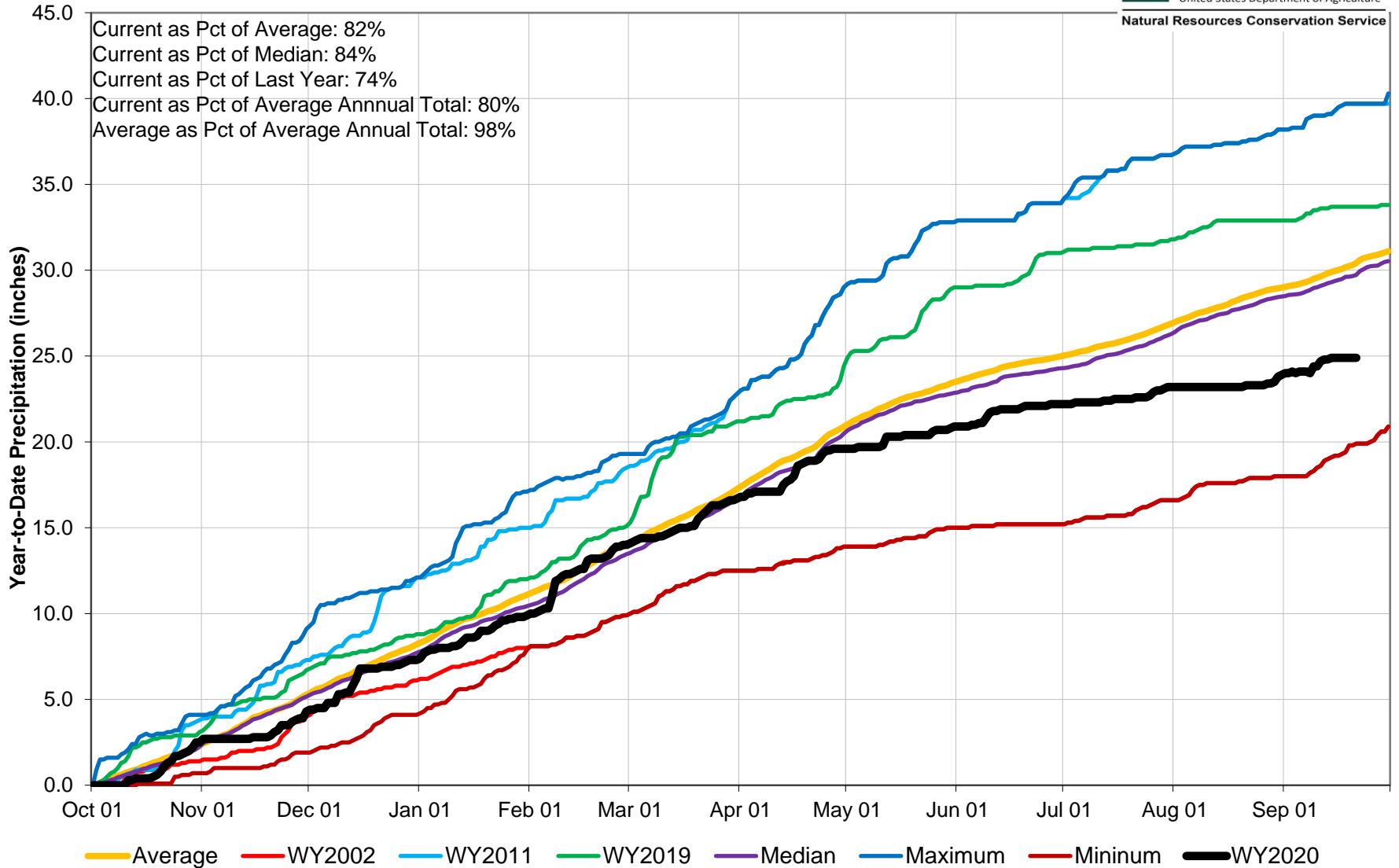
Current as of Sep 21, 2020





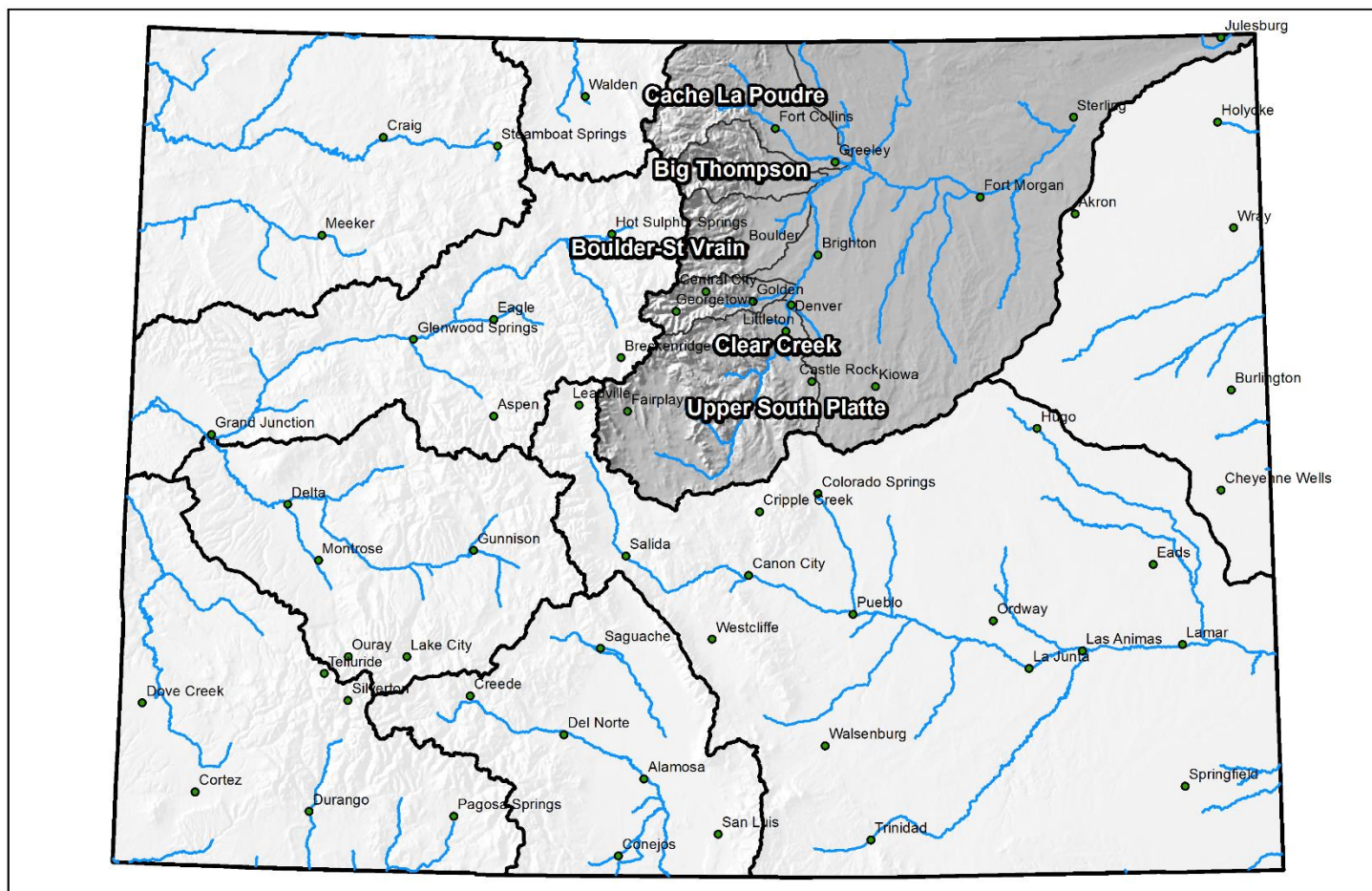
Upper Colorado River Basin High/Low Year-to-Date Precipitation Summary

Based on Provisional SNOTEL data as of Sep 21, 2020



Major Basin Summary

South Platte River Basin



0 25 50 100 150 200 Miles

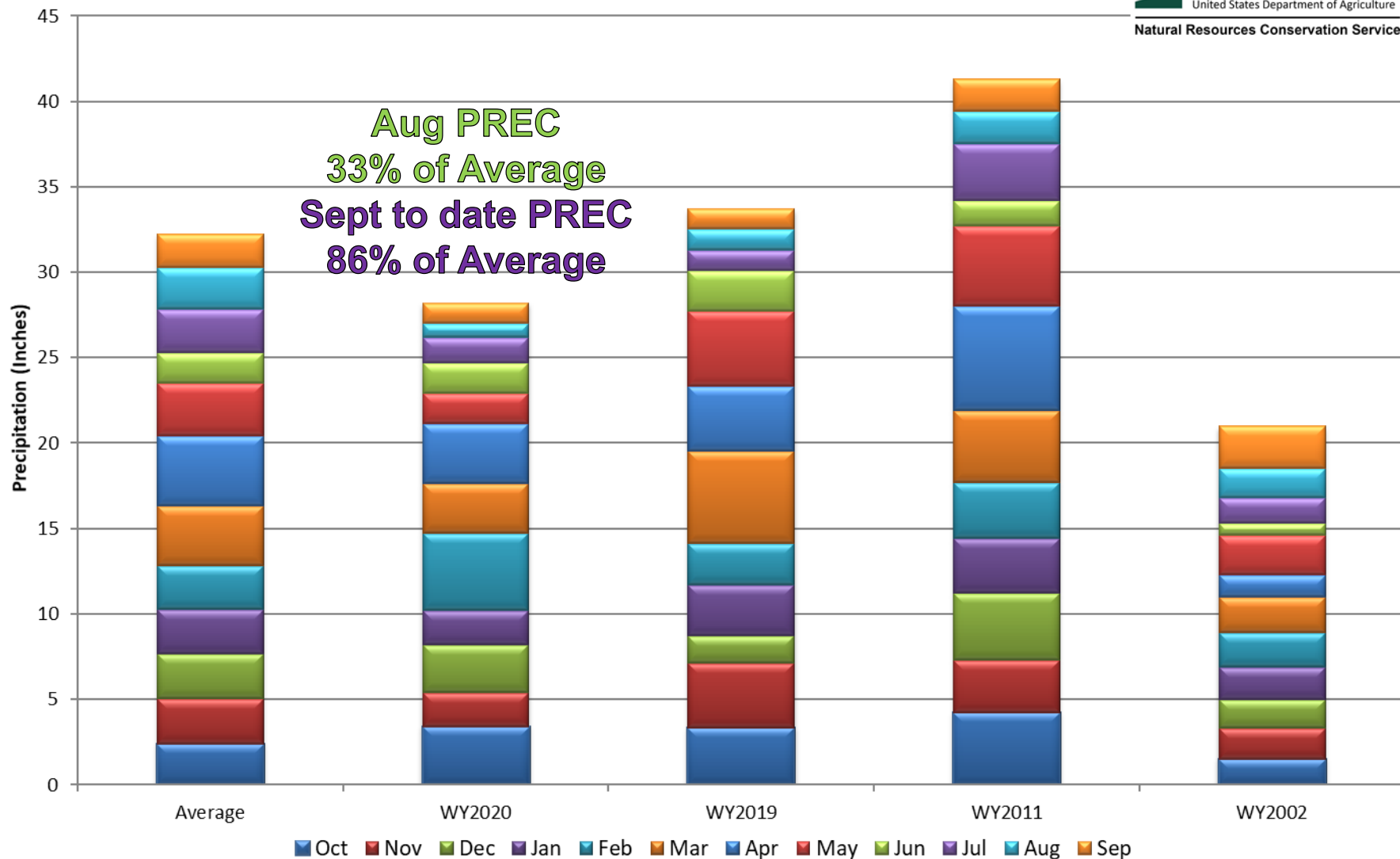
South Platte River Basin High/Low Monthly Precipitation Summary

Based on Provisional SNOTEL data as of Sep 21, 2020



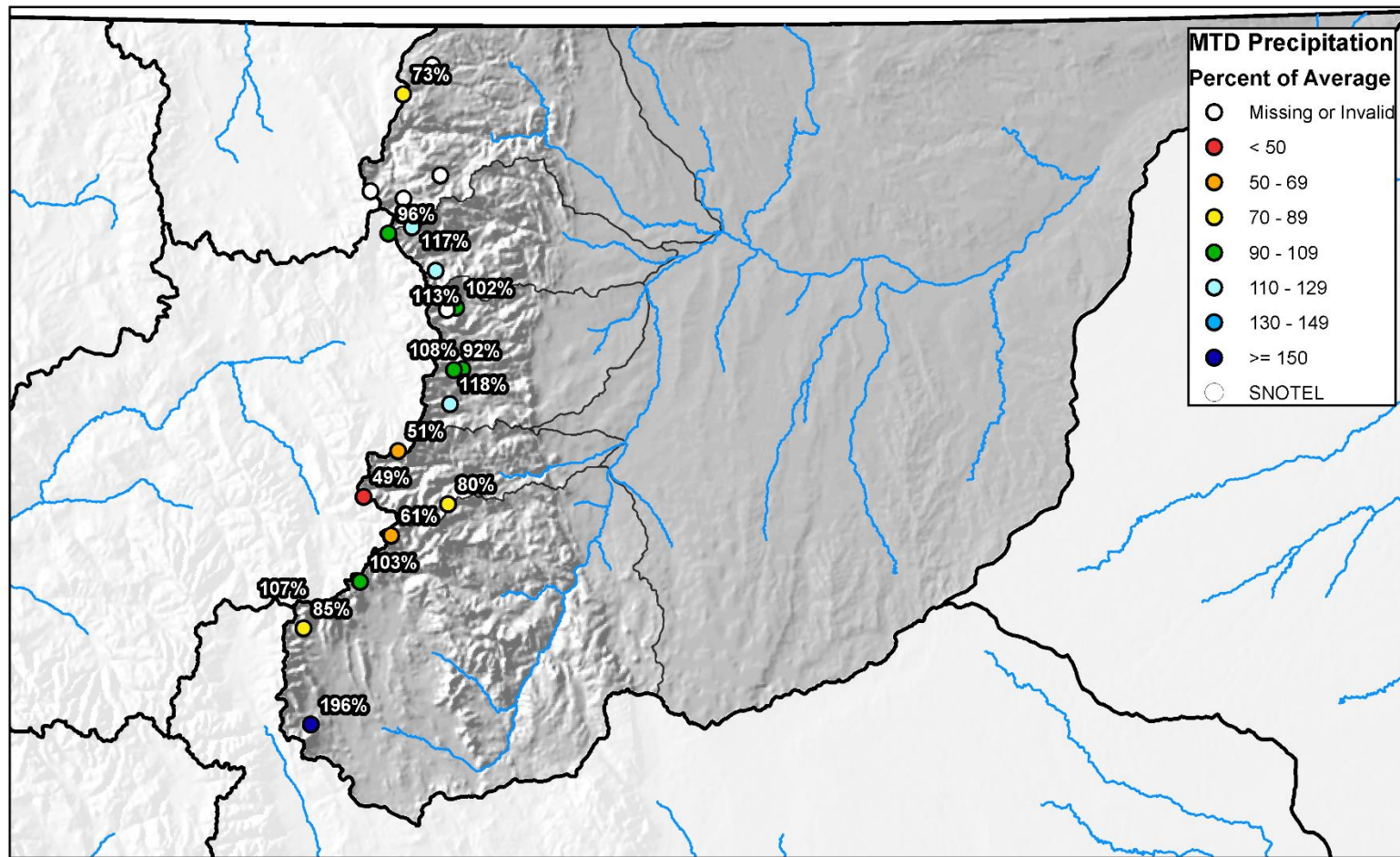
United States Department of Agriculture

Natural Resources Conservation Service



South Platte River Basin Month to Date Precipitation Summary

Current as of Sep 21, 2020

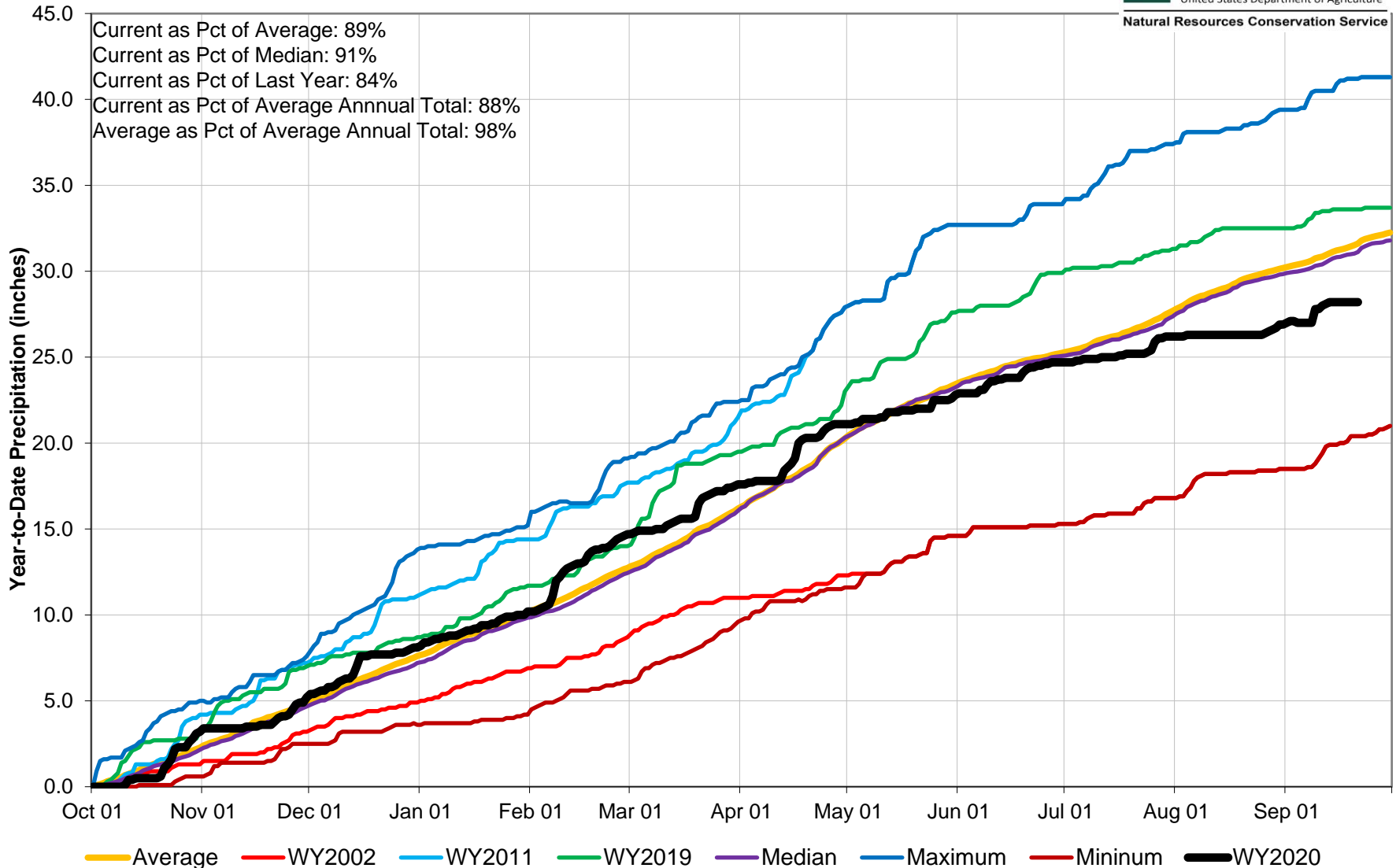


0 10 20 40 60 80 Miles



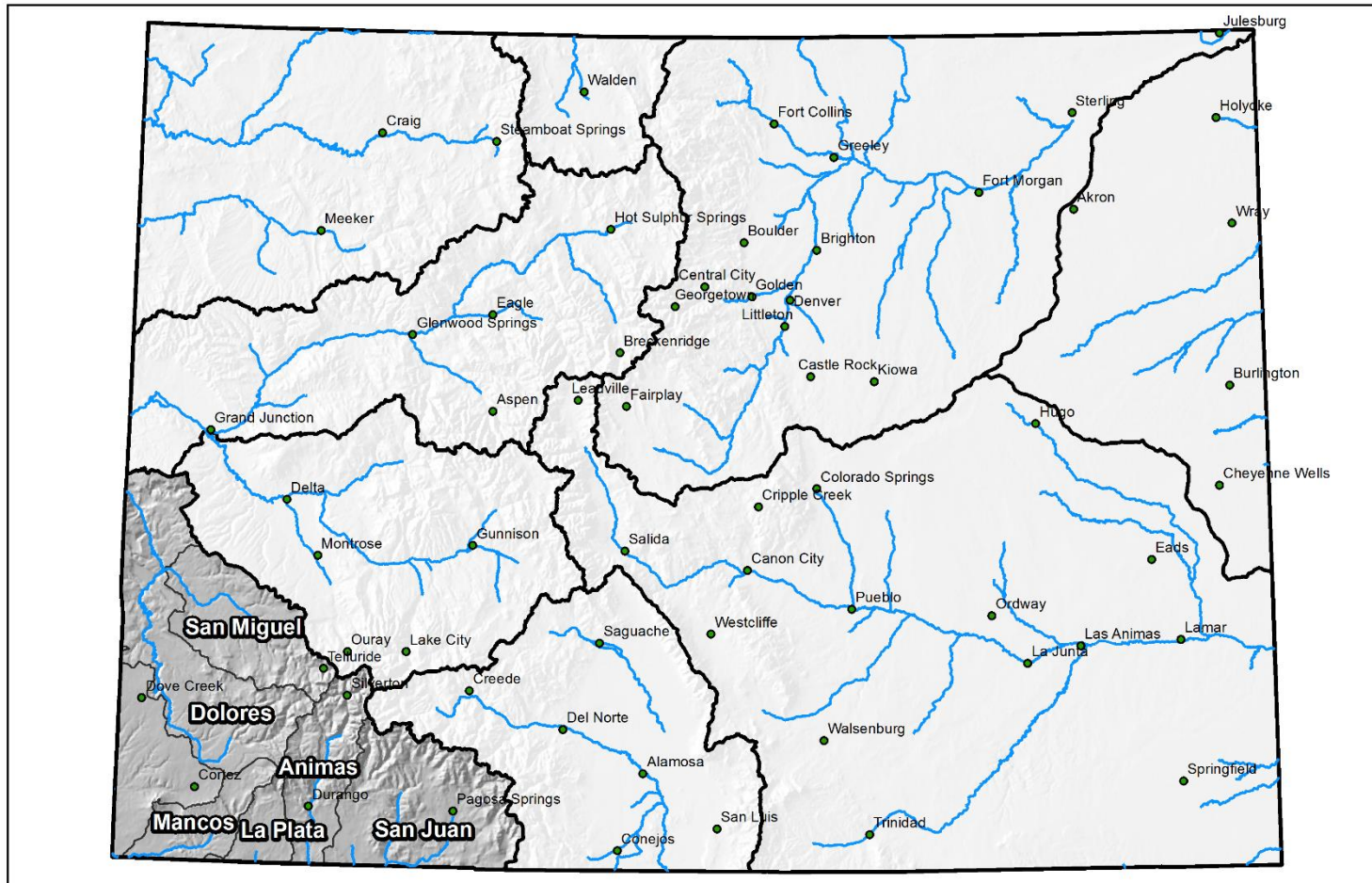
South Platte River Basin High/Low Year-to-Date Precipitation Summary

Based on Provisional SNOTEL data as of Sep 21, 2020



Major Basin Summary

San Miguel, Dolores, Animas, and San Juan River Basins



0 25 50 100 150 200 Miles

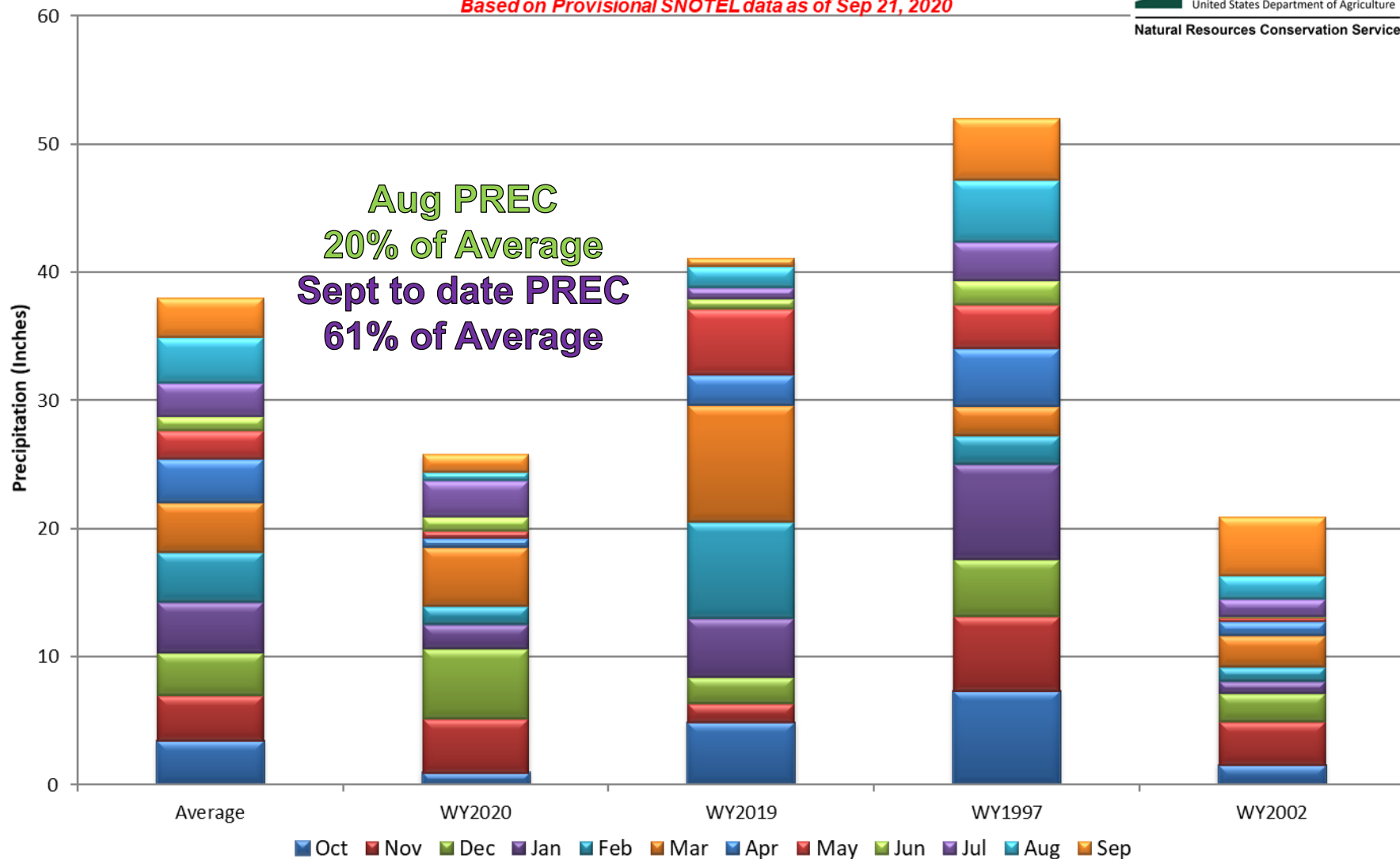
San Miguel, Dolores, Animas and San Juan River Basins High/Low Monthly Precipitation Summary

Based on Provisional SNOTEL data as of Sep 21, 2020



United States Department of Agriculture

Natural Resources Conservation Service

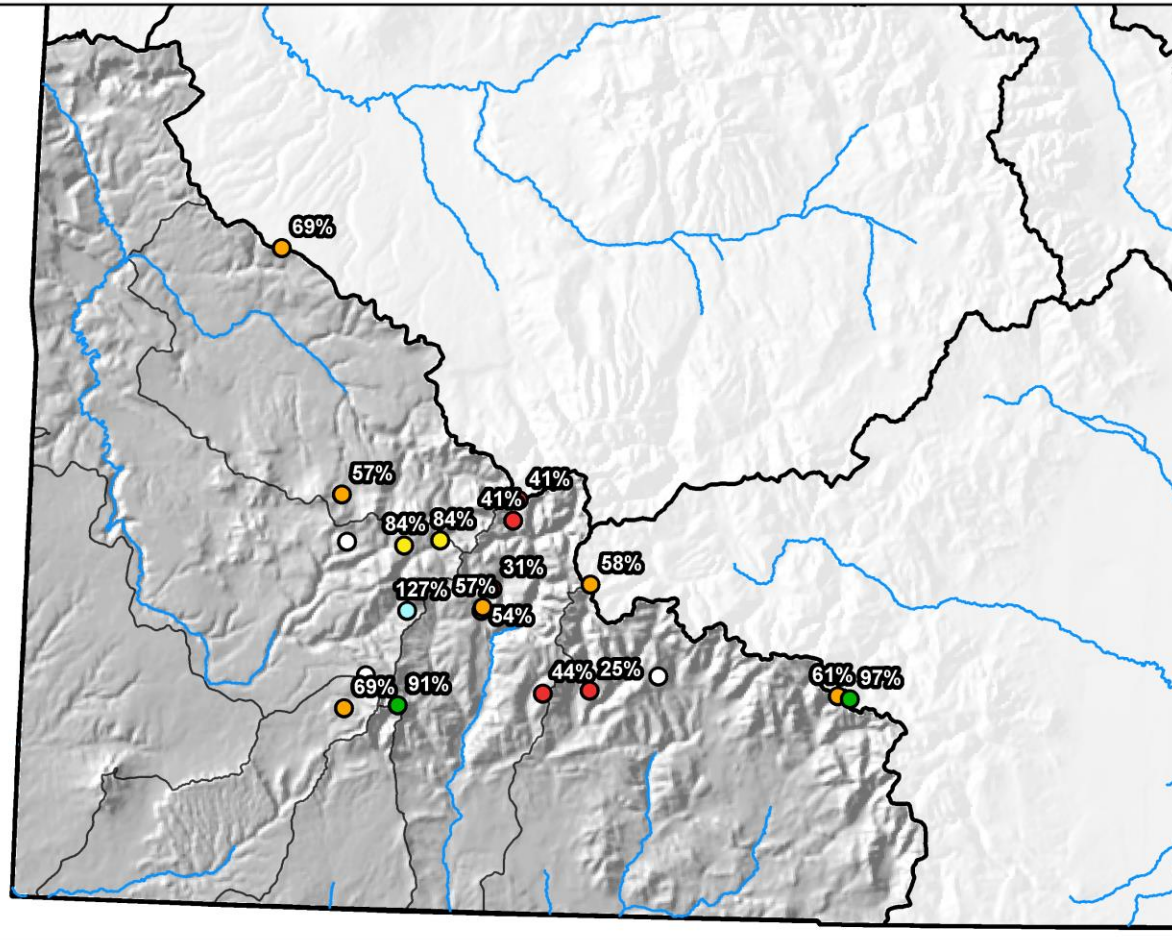


San Miguel, Dolores, Animas, and San Juan River Basins Month to Date Precipitation Summary

Current as of Sep 21, 2020

MTD Precipitation Percent of Average

- Missing or Invalid
- < 50
- 50 - 69
- 70 - 89
- 90 - 109
- 110 - 129
- 130 - 149
- >= 150
- SNOTEL

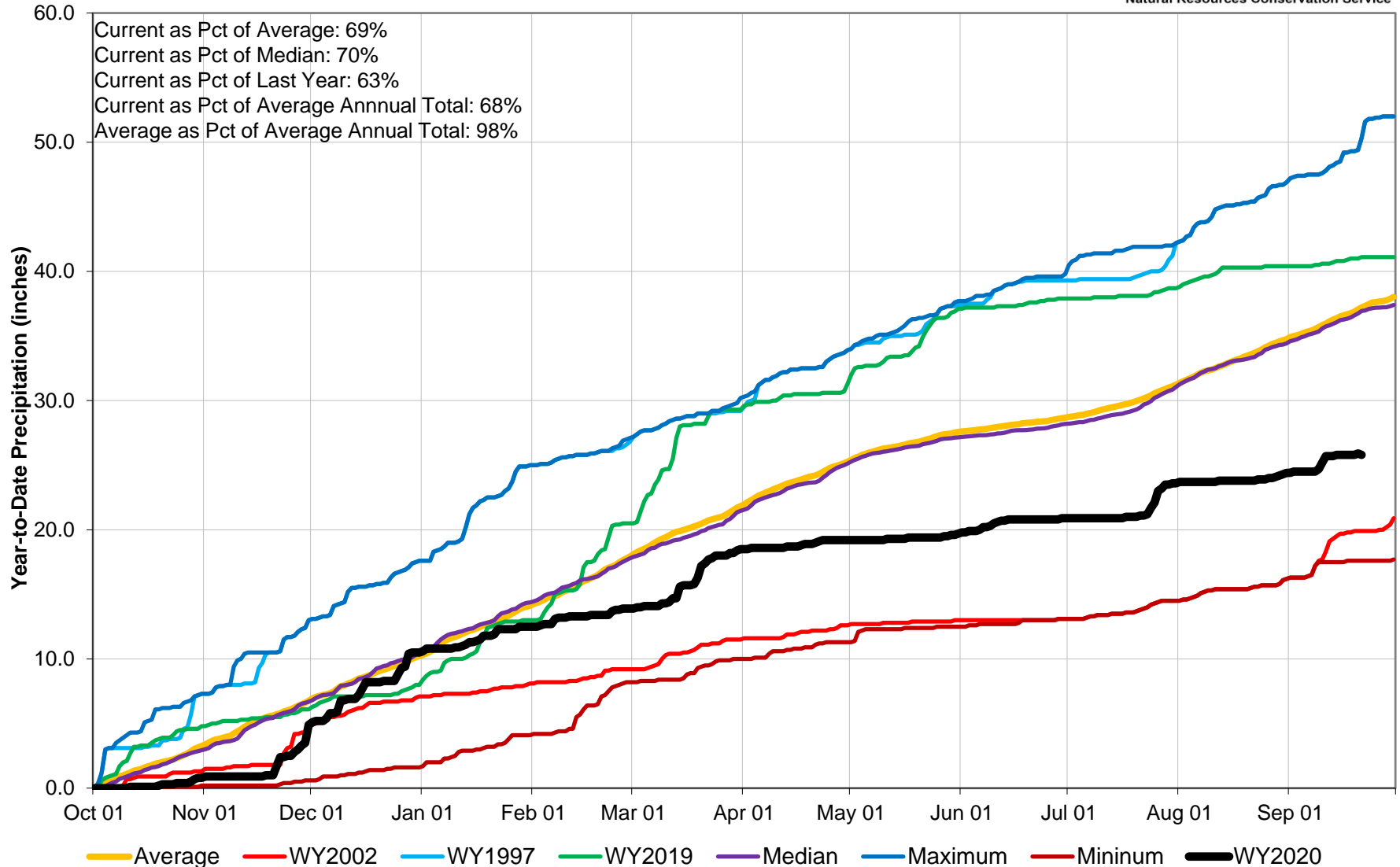


0 10 20 40 60 80 Miles



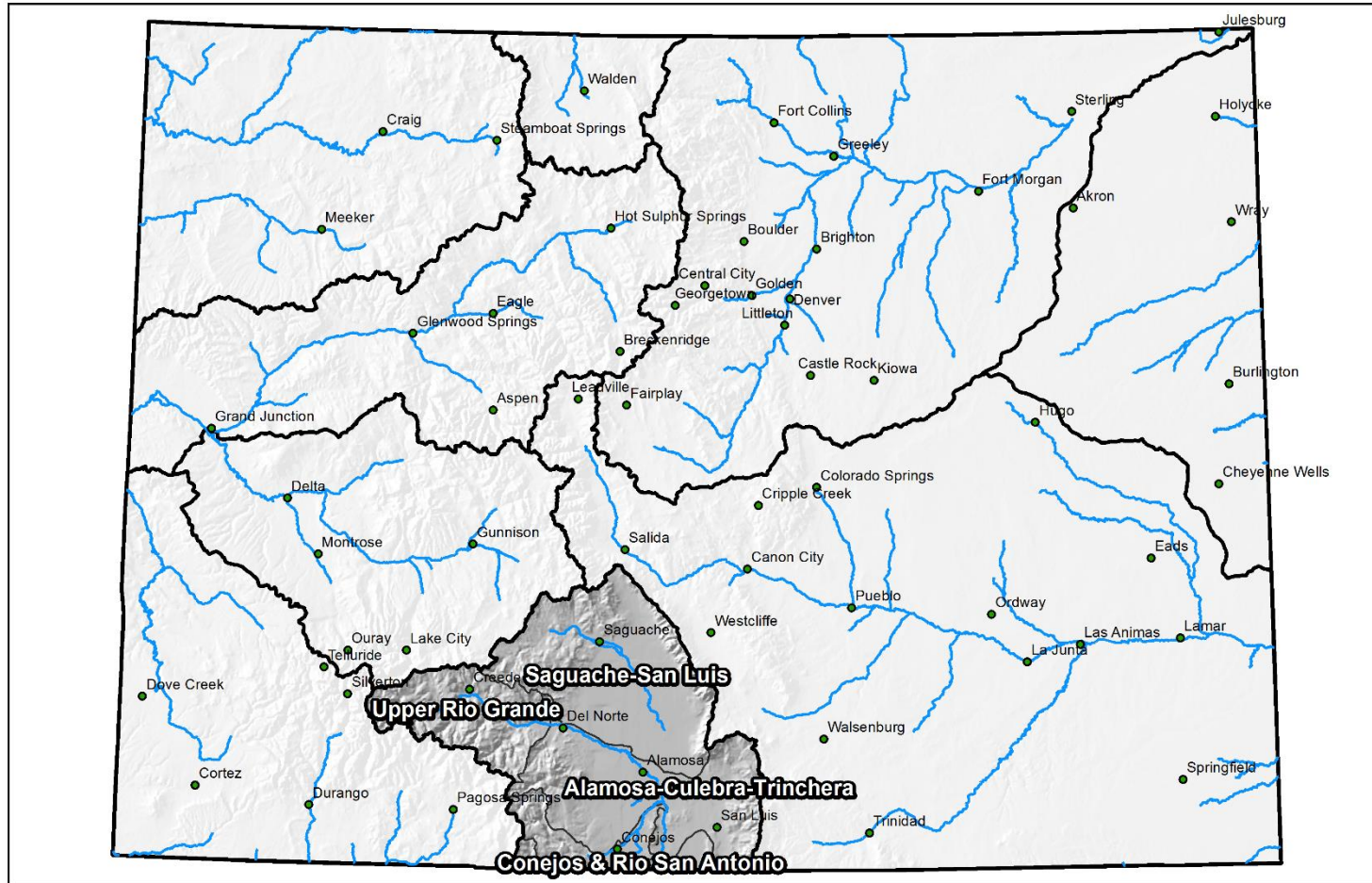
San Miguel, Dolores, Animas and San Juan River Basins High/Low Year-to-Date Precipitation Summary

Based on Provisional SNOTEL data as of Sep 21, 2020



Major Basin Summary

Upper Rio Grande River Basin



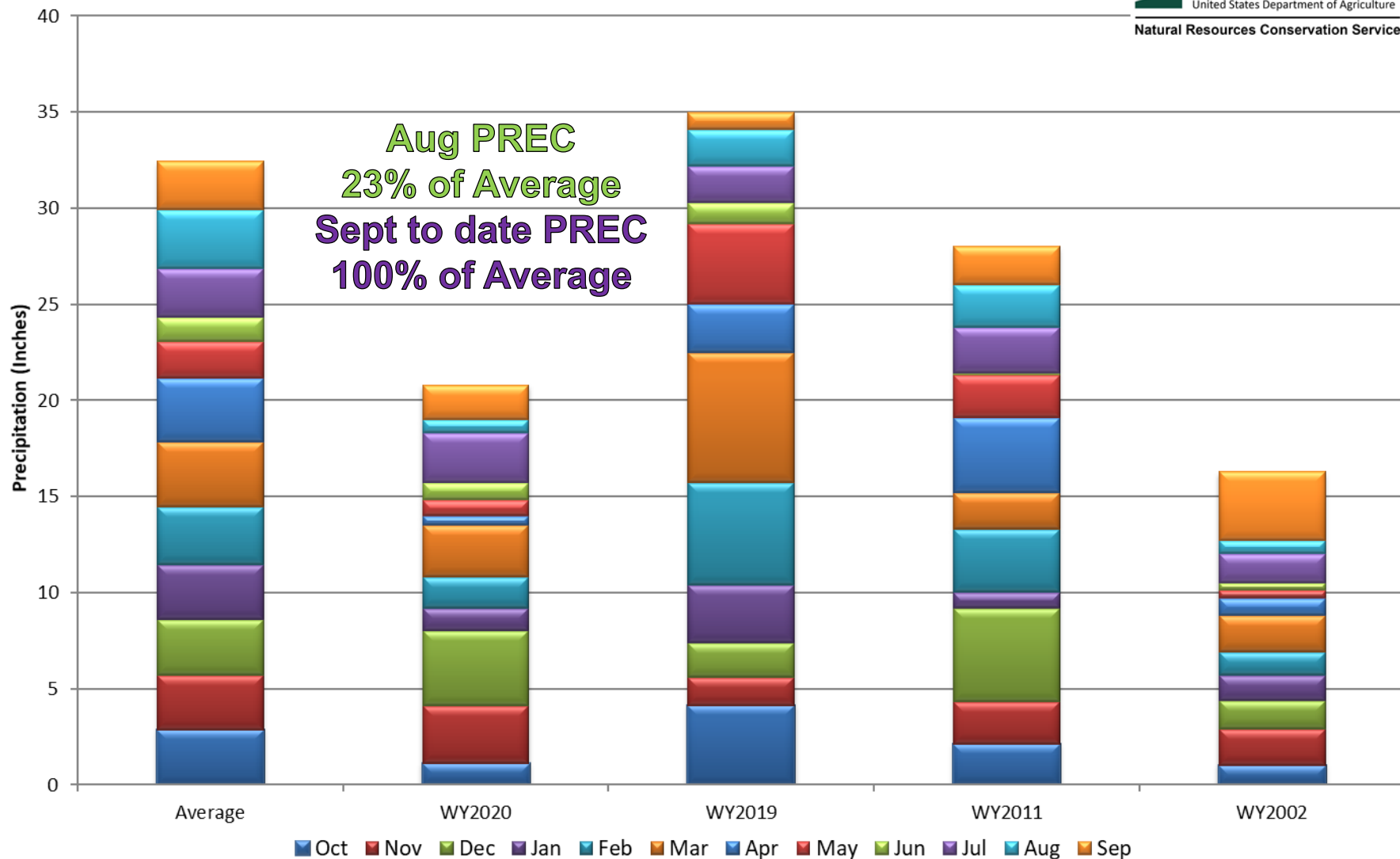
Upper Rio Grande River Basin High/Low Monthly Precipitation Summary

Based on Provisional SNOTEL data as of Sep 21, 2020



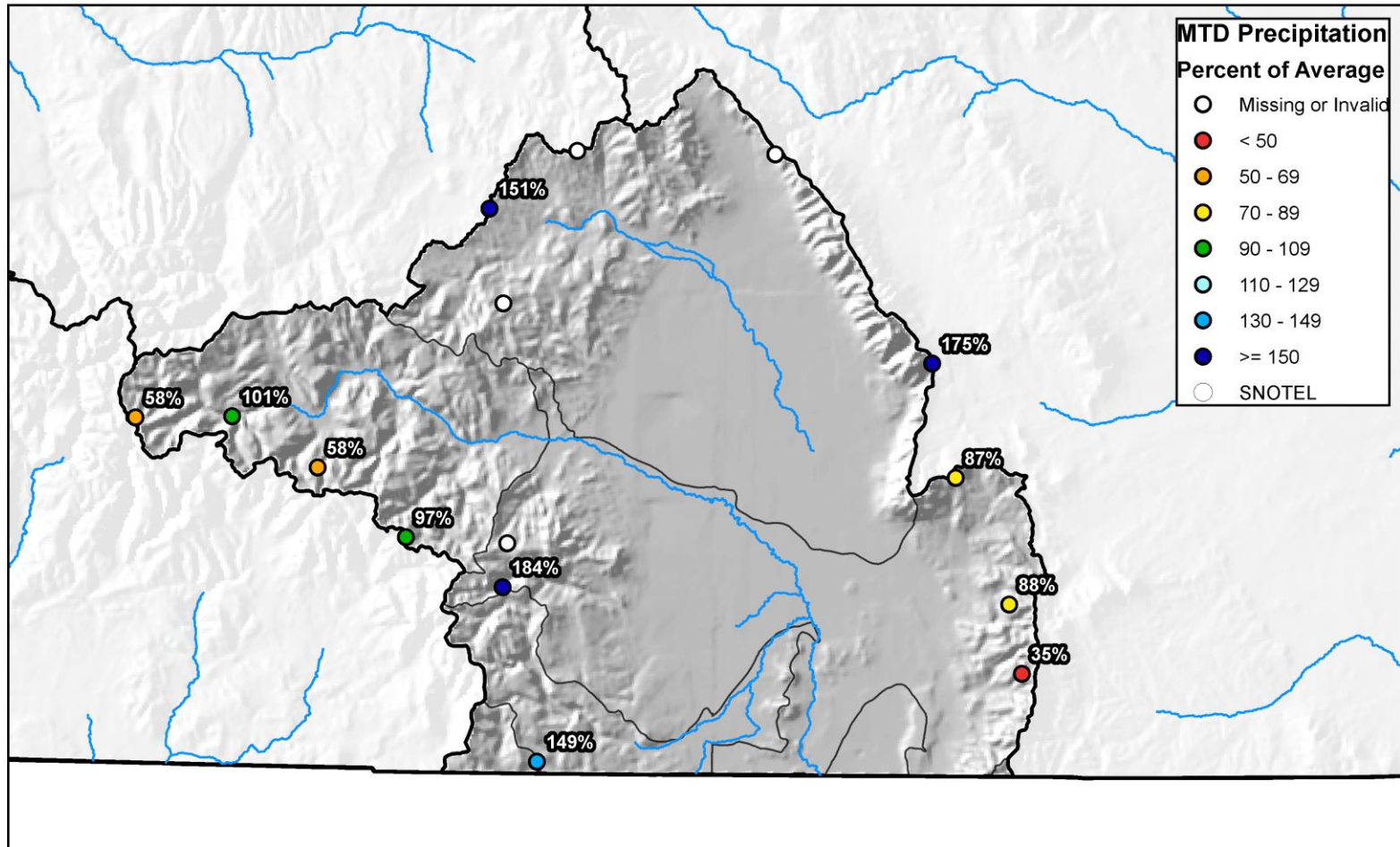
United States Department of Agriculture

Natural Resources Conservation Service



Upper Rio Grande River Basin Month to Date Precipitation Summary

Current as of Sep 21, 2020



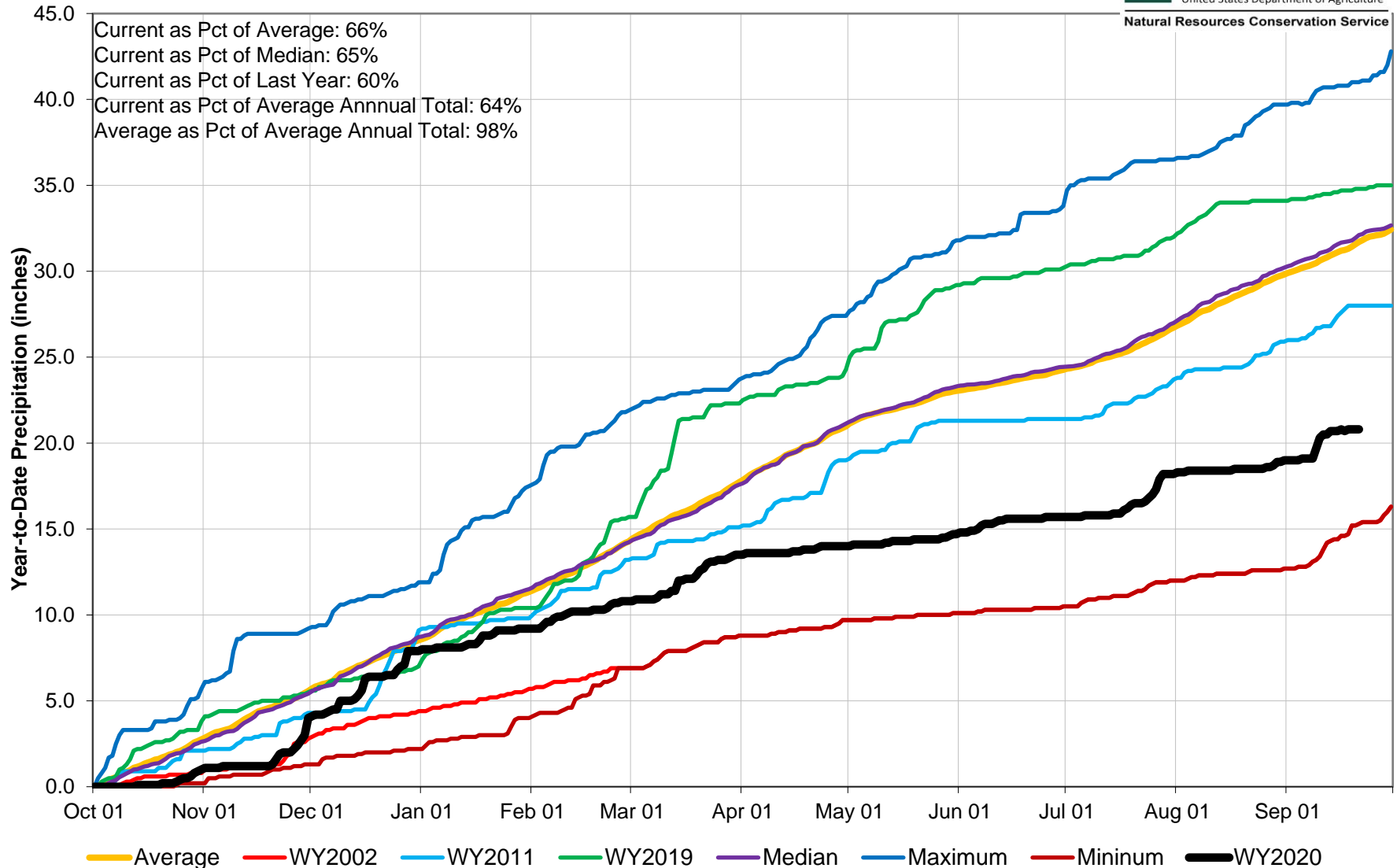
Upper Rio Grande River Basin High/Low Year-to-Date Precipitation Summary

Based on Provisional SNOTEL data as of Sep 21, 2020



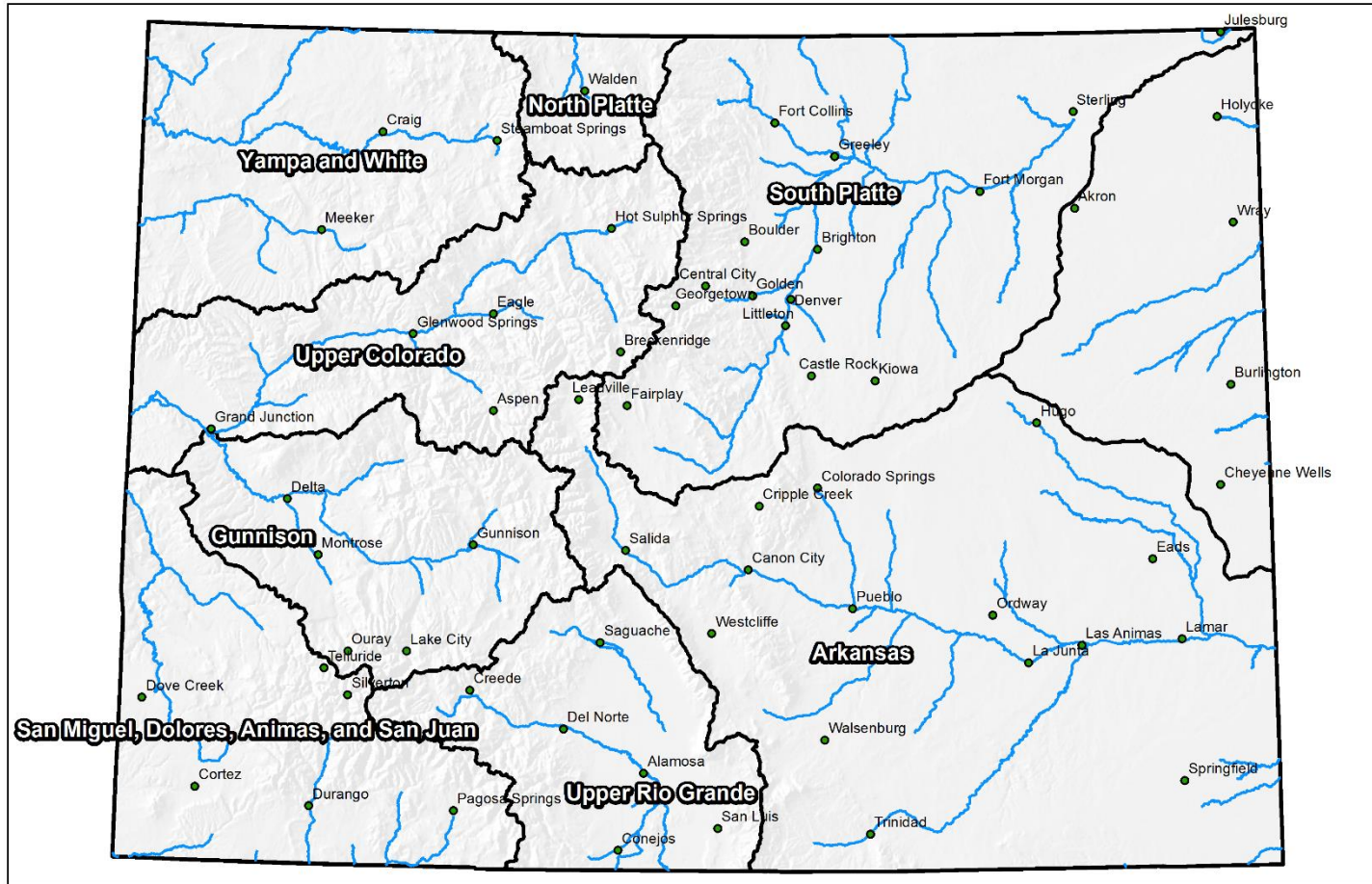
United States Department of Agriculture

Natural Resources Conservation Service



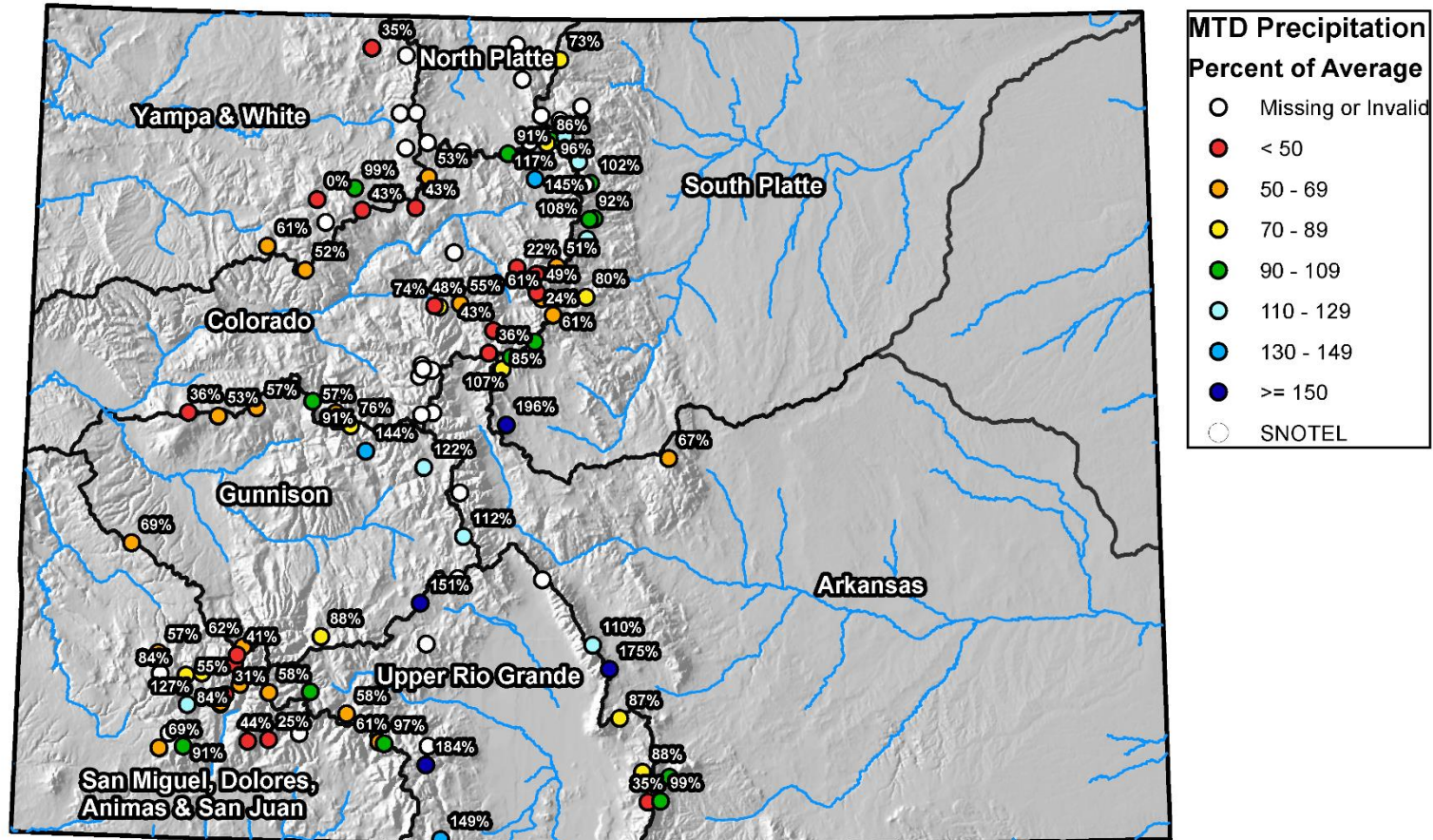
Colorado Statewide Summary

Colorado Major Basins



Colorado SNOTEL Month-to-Date Precipitation

Current as of Sep 21, 2020

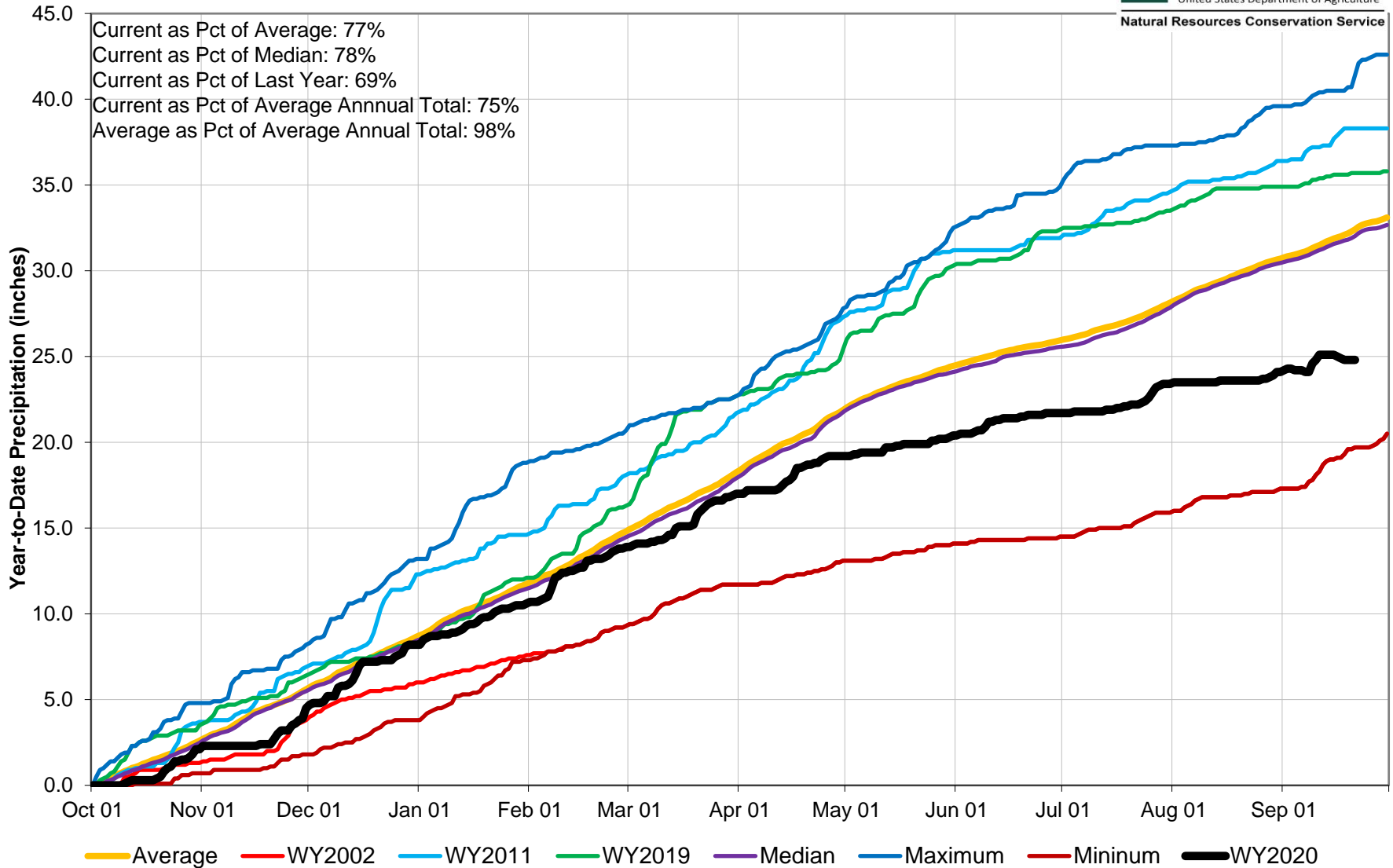


0 25 50 100 150 200 Miles



Colorado Statewide High/Low Year-to-Date Precipitation Summary

Based on Provisional SNOTEL data as of Sep 21, 2020



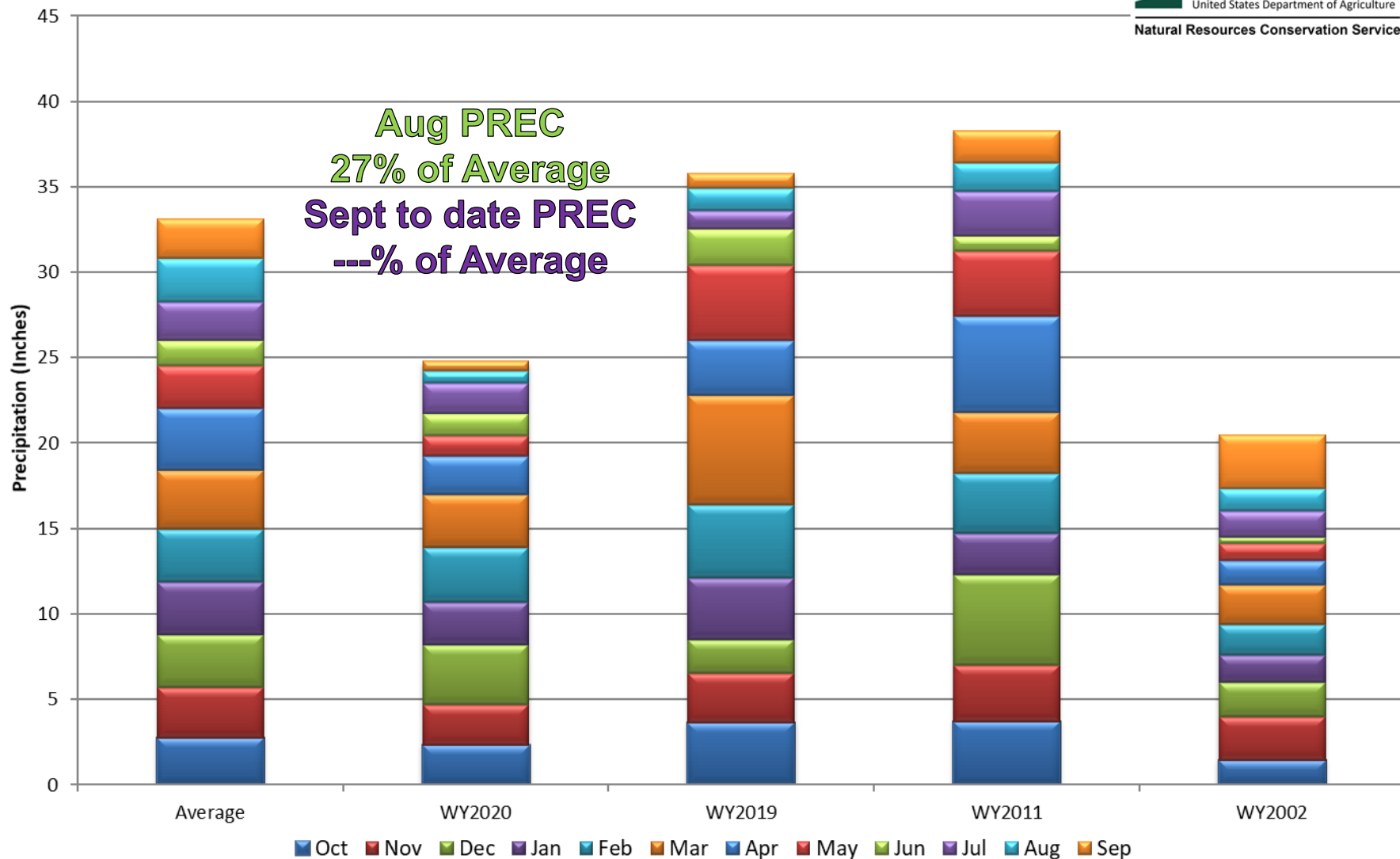
Colorado Statewide High/Low Monthly Precipitation Summary

Based on Provisional SNOTEL data as of Sep 21, 2020



United States Department of Agriculture

Natural Resources Conservation Service





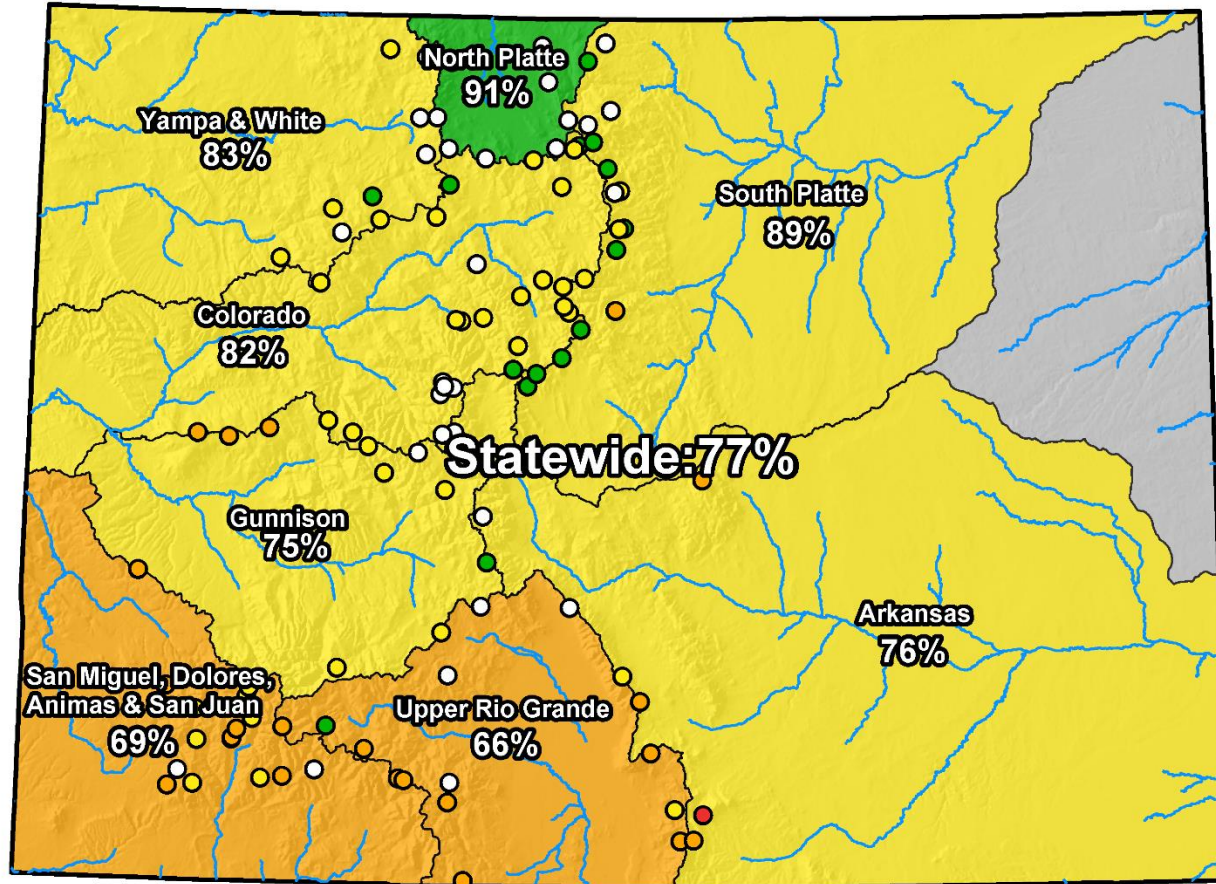
Precipitation

Basin	Aug % Avg	Sept to Date % Avg	6/1 – Today Rank	8/1 – Today Rank	Record Length (Yrs)
U Rio Grande	23%	100%	6 th lowest	2 nd lowest	34
SMDASJ	20%	61%	3 rd lowest	Record	34
Arkansas	42%	100%	9 th lowest	3 rd lowest	40
Gunnison	35%	76%	3 rd lowest	2 nd lowest	40
Colorado	40%	64%	2 nd lowest	Record	40
South Platte	33%	86%	2 nd lowest	3 rd lowest	40
North Platte	28%	ID	ID	ID	35
Yampa/White	ID	ID	ID	ID	-
State Total	27%	ID	ID	ID	-

ID = Insufficient Data

Colorado SNOTEL Water Year to Date Precipitation

Current as of Sep 21, 2020



0 25 50 100 150 200 Miles



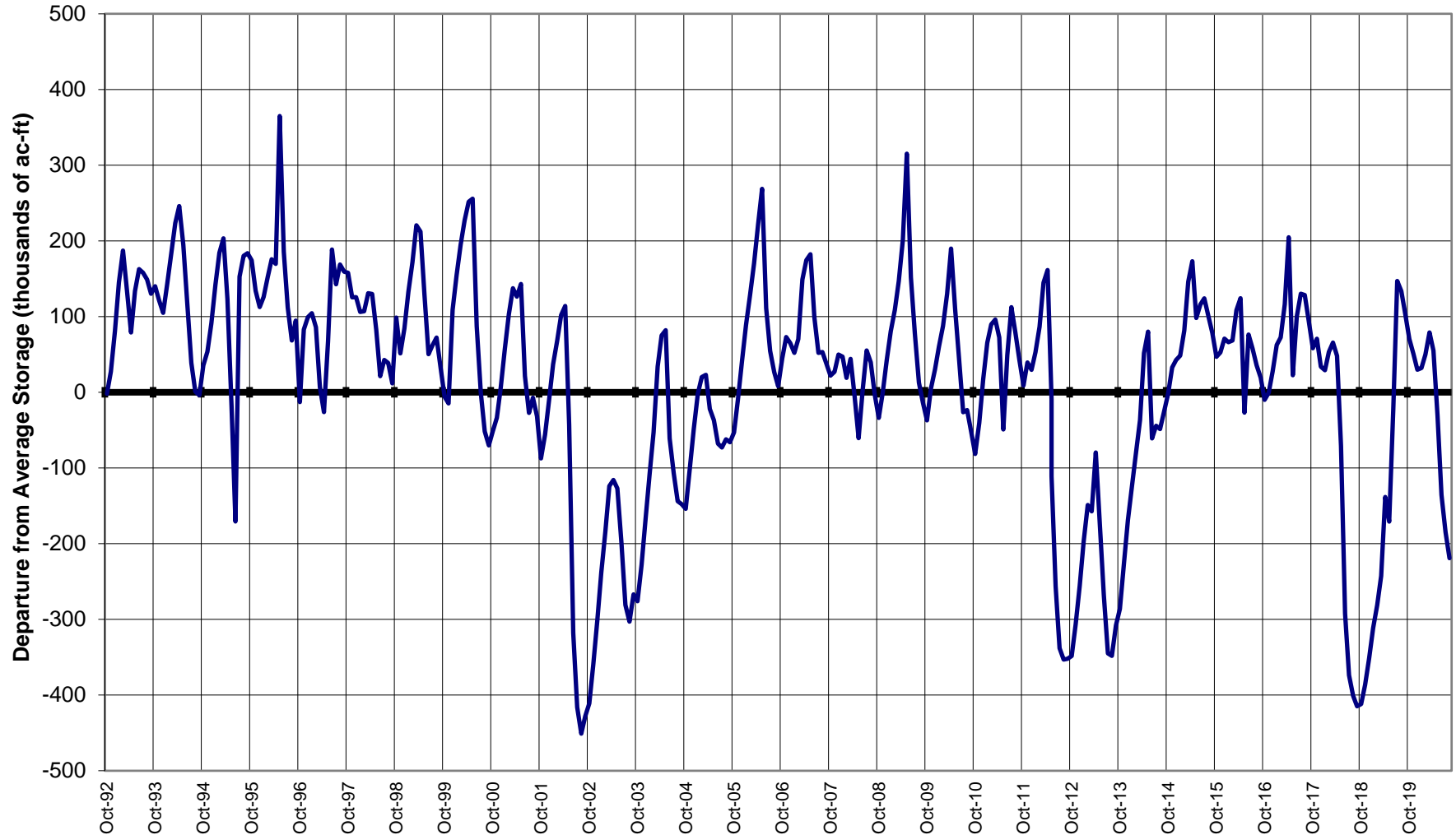
United States Department of Agriculture

Colorado Snow Surveys

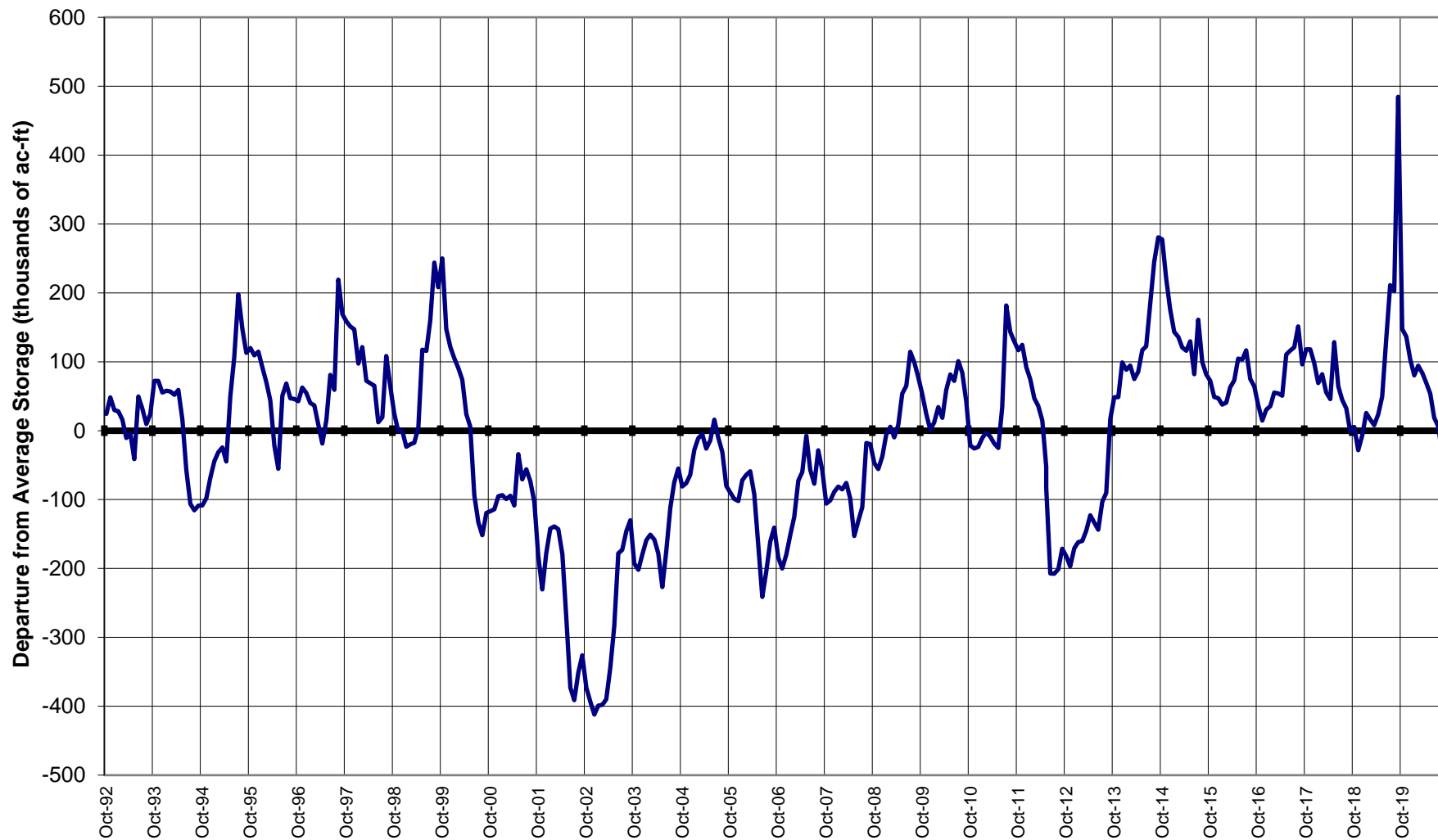
Reservoirs



GUNNISON RIVER BASIN Reservoir Storage Departure from Average

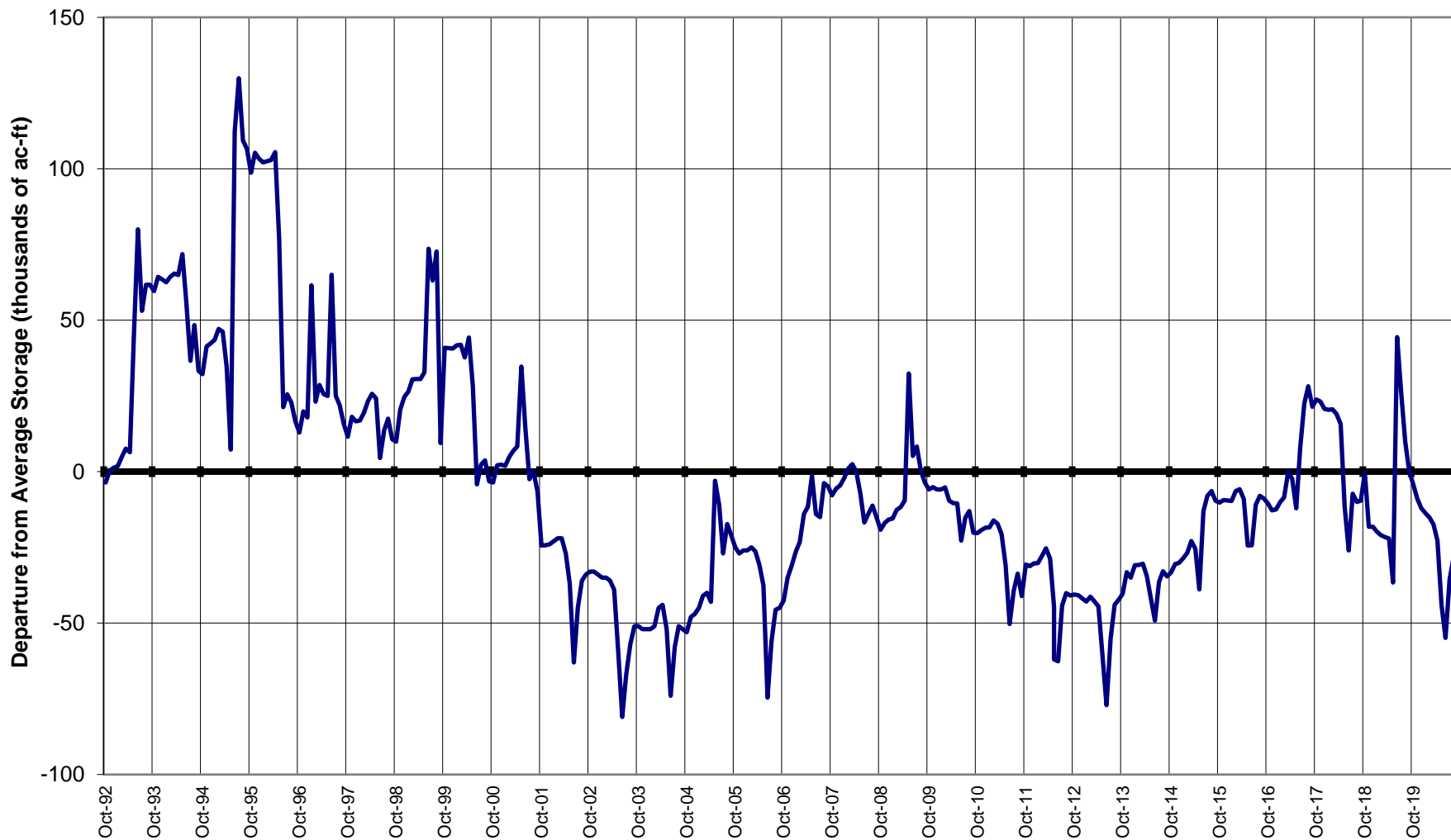


SOUTH PLATTE RIVER BASIN Reservoir Storage Departure from Average



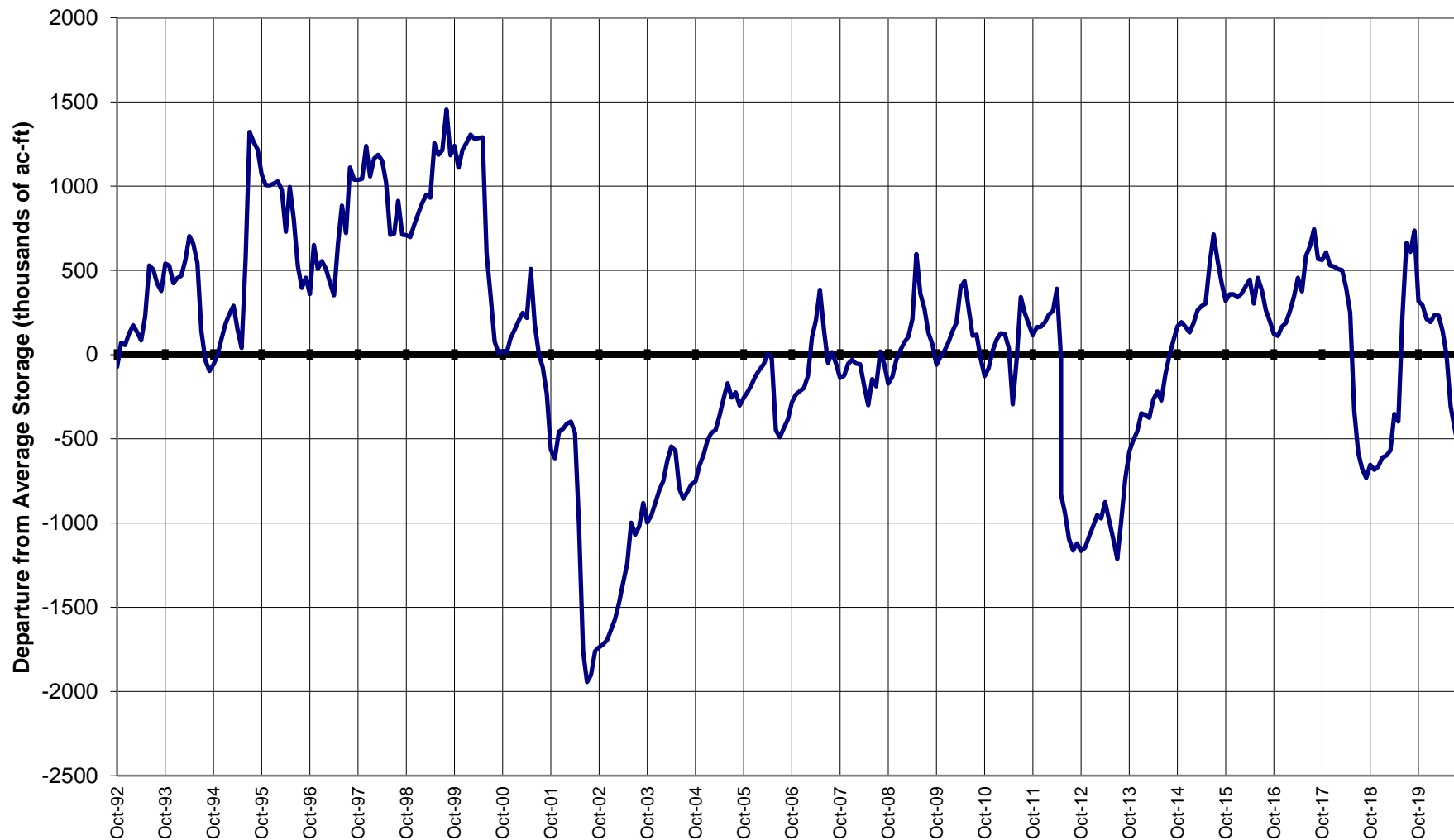


UPPER RIO GRANDE BASIN Reservoir Storage Departure from Average



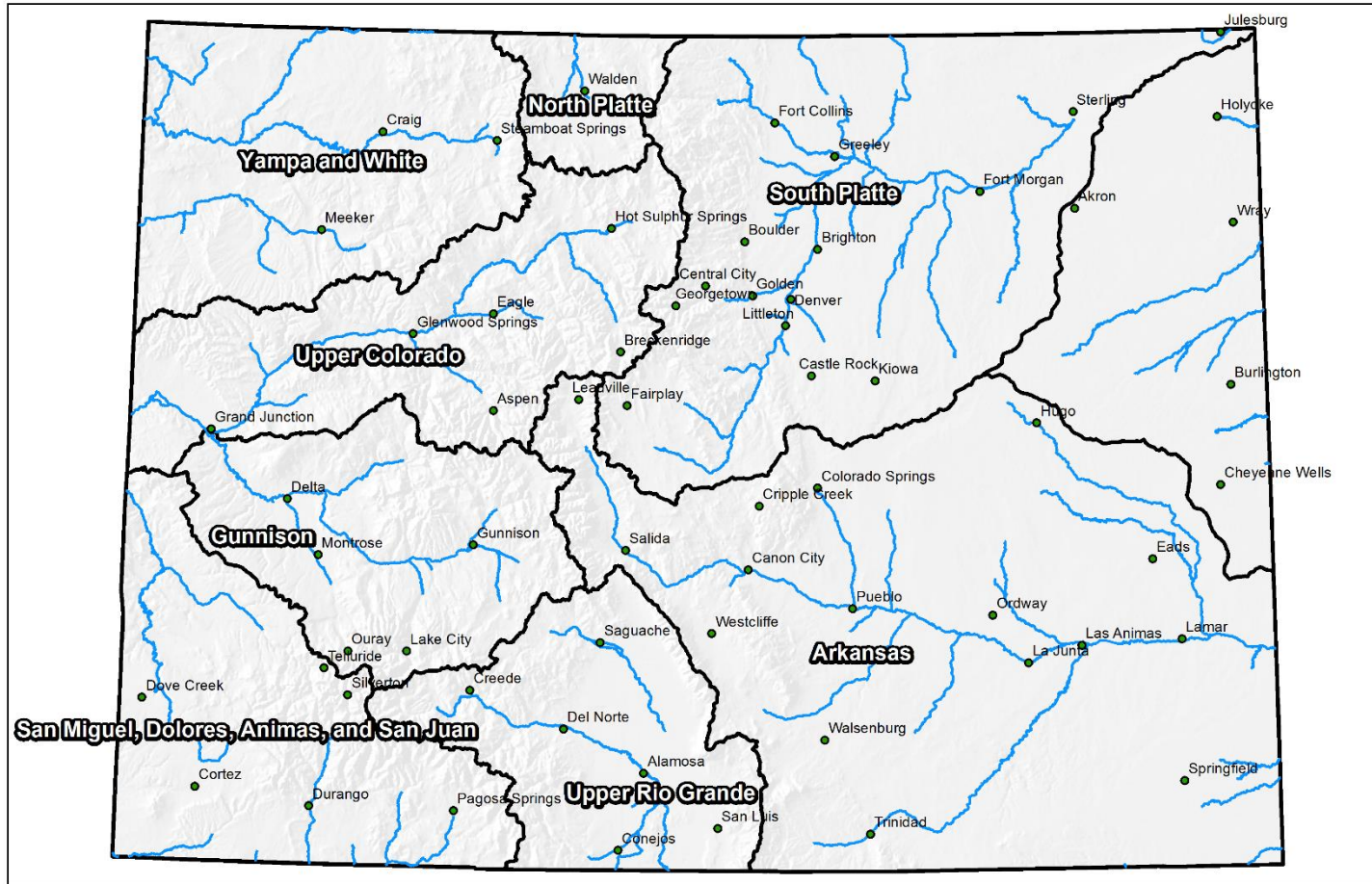


COLORADO STATEWIDE Reservoir Storage Departure from Average



Colorado Statewide Summary

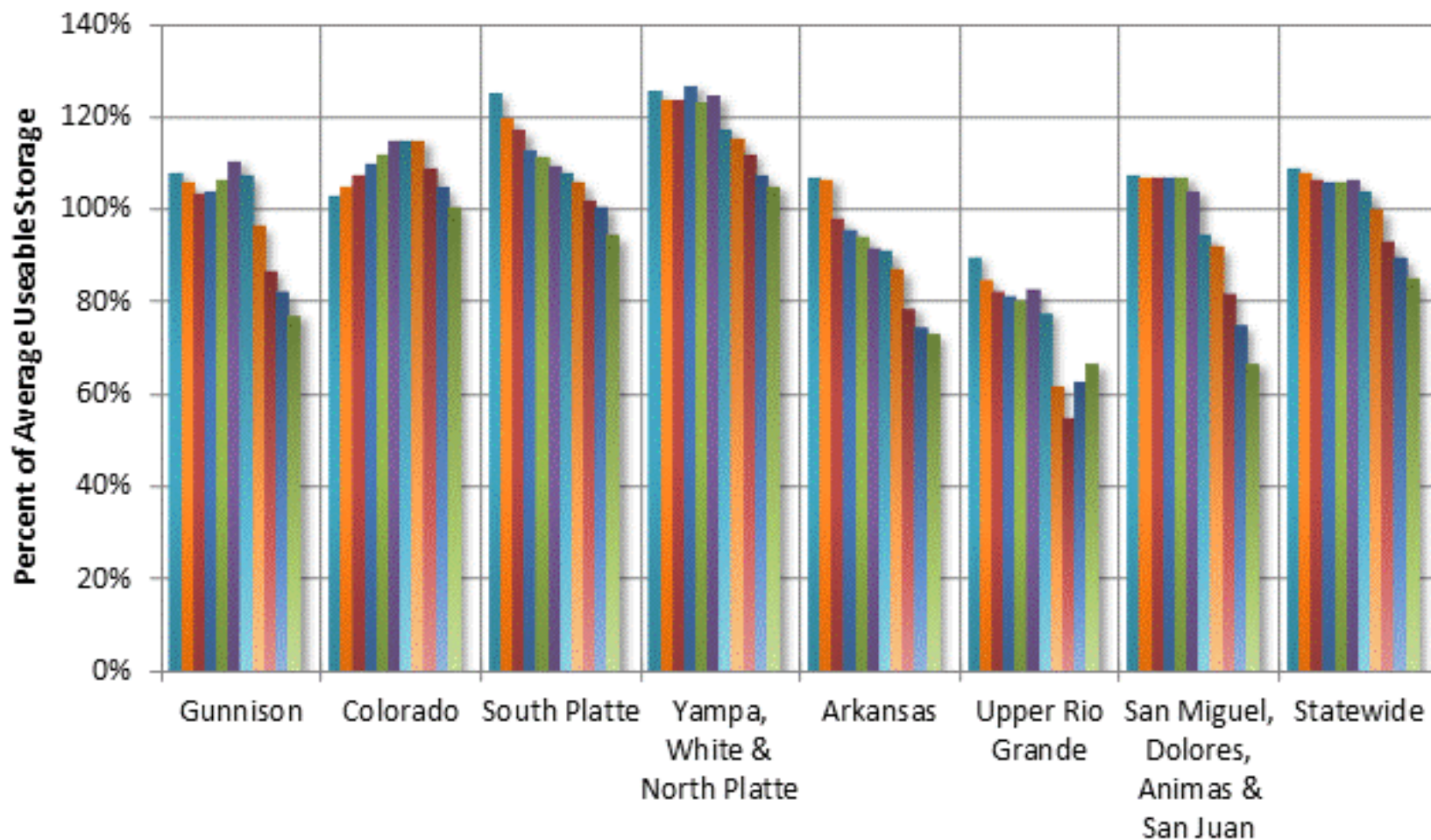
Colorado Major Basins



0 25 50 100 150 200 Miles

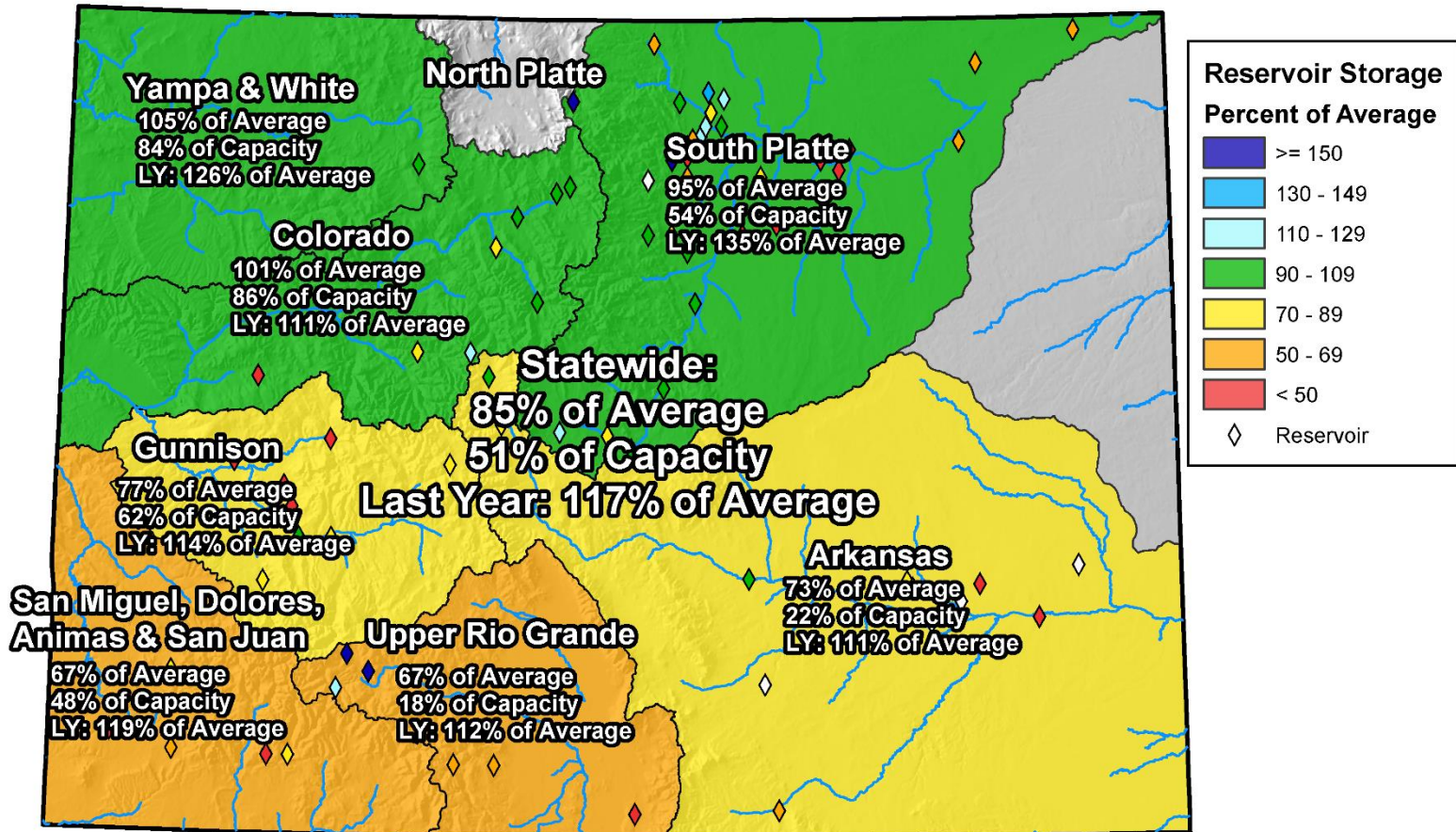
Colorado Reservoir Storage

Oct-19 Nov-19 Dec-19 Jan-20 Feb-20 Mar-20
 Apr-20 May-20 Jun-20 Jul-20 Aug-20 Sep-20



Colorado Monthly Reservoir Storage Summary

End of August 2020



0 25 50 100 150 200 Miles

Summary

•Particularly Dry Summer

- August 1 to now – most basins are some of the driest on record
 - Two are driest on record for this period – SMDASJ & Upper Colorado
- June 1 to now – some basins are some of the driest on record
- Most basins compare closely to 2018 for respective period

•Reservoir Storage

- Statewide storage at 85% of average, down from 90% last month
- Storage near average in Northern half of state
- Storage between 67% and 77% of average in Southern Colorado
- Upper Rio Grande & SMDASJ basins show storage at 67% of average

•Dry conditions now will have implications on runoff next spring and summer as they did this year



United States Department of Agriculture

Colorado Snow Surveys

Water Availability Task Force Meeting

Sept 22nd, 2020

NRCS Snow Survey and Water Supply Forecasting Program

Brian Domonkos

Hydrologist - Colorado Snow Survey Supervisor

720-544-2852 – brian.domonkos@usda.gov

Colorado Snow Survey [Webpage](#)



Non-Discrimination Statement:

In accordance with Federal civil rights law and U.S. Department of agriculture (USDA) civil rights regulations and policies, the USDA, its Agencies, offices, and employees, and institutions participating in or administering USDA programs are prohibited from discriminating based on race, color, national origin, religion, sex, gender identity (including gender expression), sexual orientation, disability, age, marital status, family/parental status, income derived from a public assistance program, political beliefs, or reprisal or retaliation for prior civil rights activity, in any program or activity conducted or funded by USDA (not all bases apply to all programs). Remedies and complaint filing deadlines vary by program or incident.

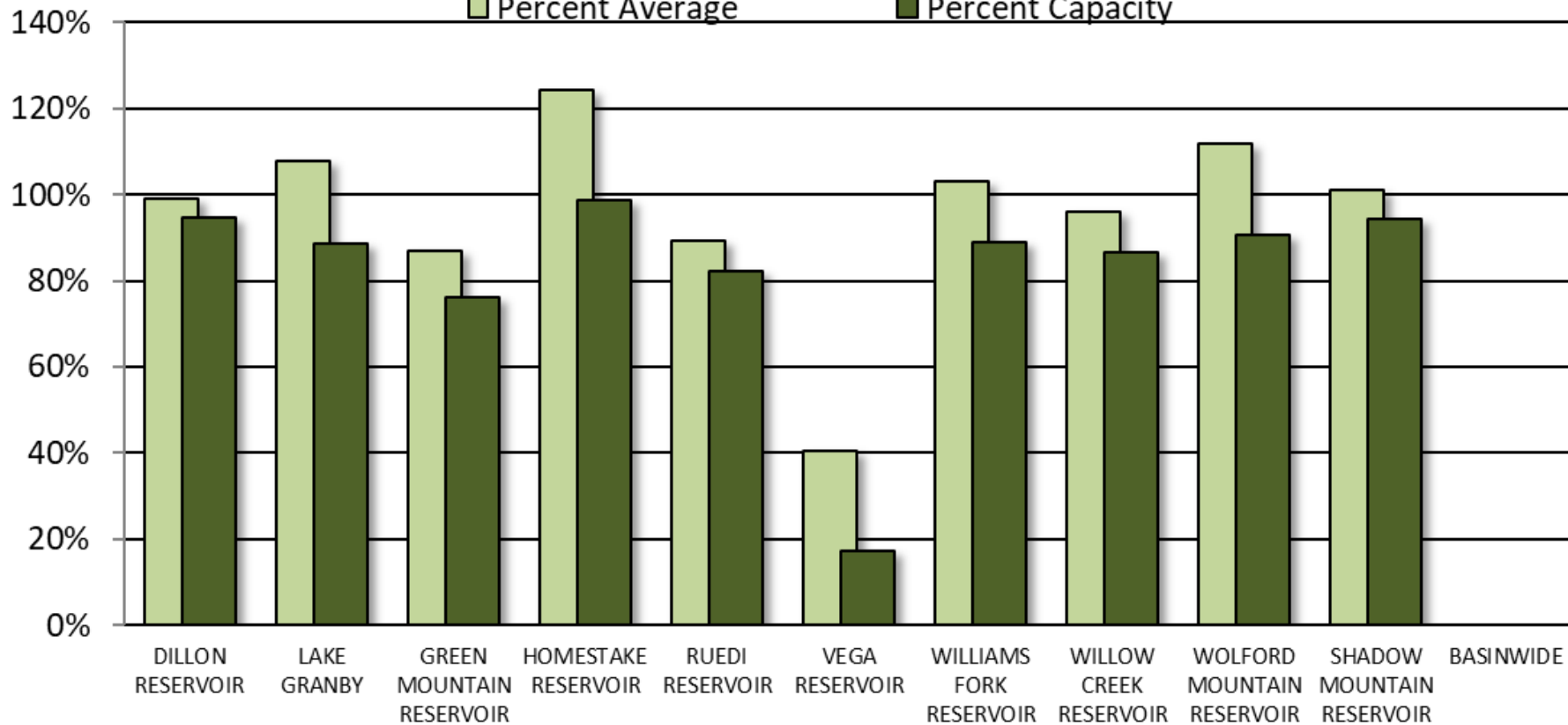
Persons with disabilities who require alternative means of communication for program information (e.g., Braille, large print, audiotape, American Sign Language, etc.) should contact the responsible Agency or USDA 's TARGET Center at (202) 720-2600 (voice and TTY) or contact USDA through the Federal Relay Service at (800) 877-8339. Additionally, program information may be made available in languages other than English.

To file a program discrimination complaint, complete the USDA Program Discrimination Complaint Form, AD-3027, found online at [How to File a Program Discrimination Complaint](#) and at any USDA office or write a letter addressed to USDA and provide in the letter all of the information requested in the form. To request a copy of the complaint form, call (866) 632-9992. Submit your completed form or letter to USDA by: (1) mail: U.S. Department of Agriculture, Office of the Assistant Secretary for Civil Rights, 1400 Independence Avenue, SW, Washington, D.C. 20250-9410; (2) fax: (202) 690-7442; or (3) email: program.intake@usda.gov.

End of August Reservoir Storage

■ Percent Average

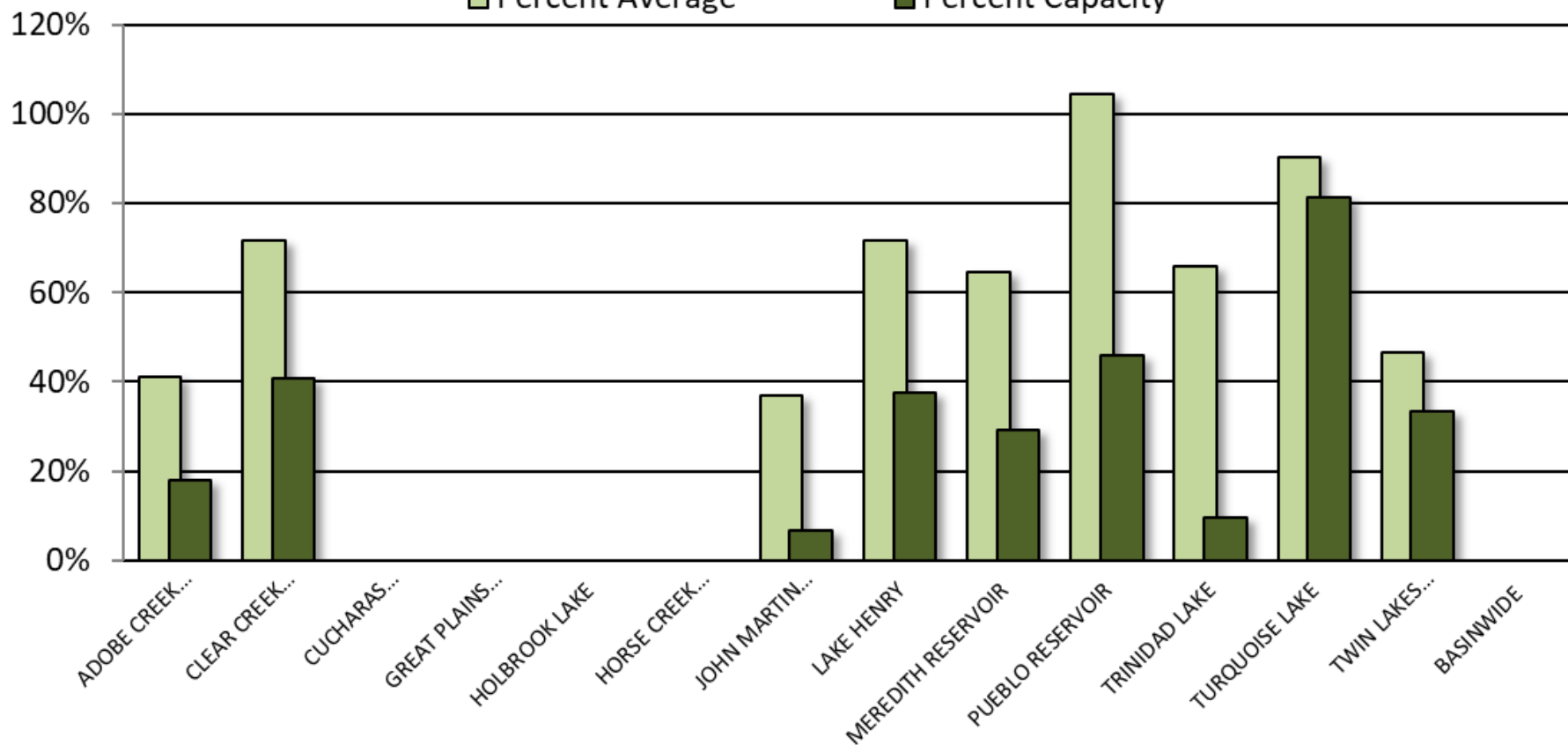
■ Percent Capacity

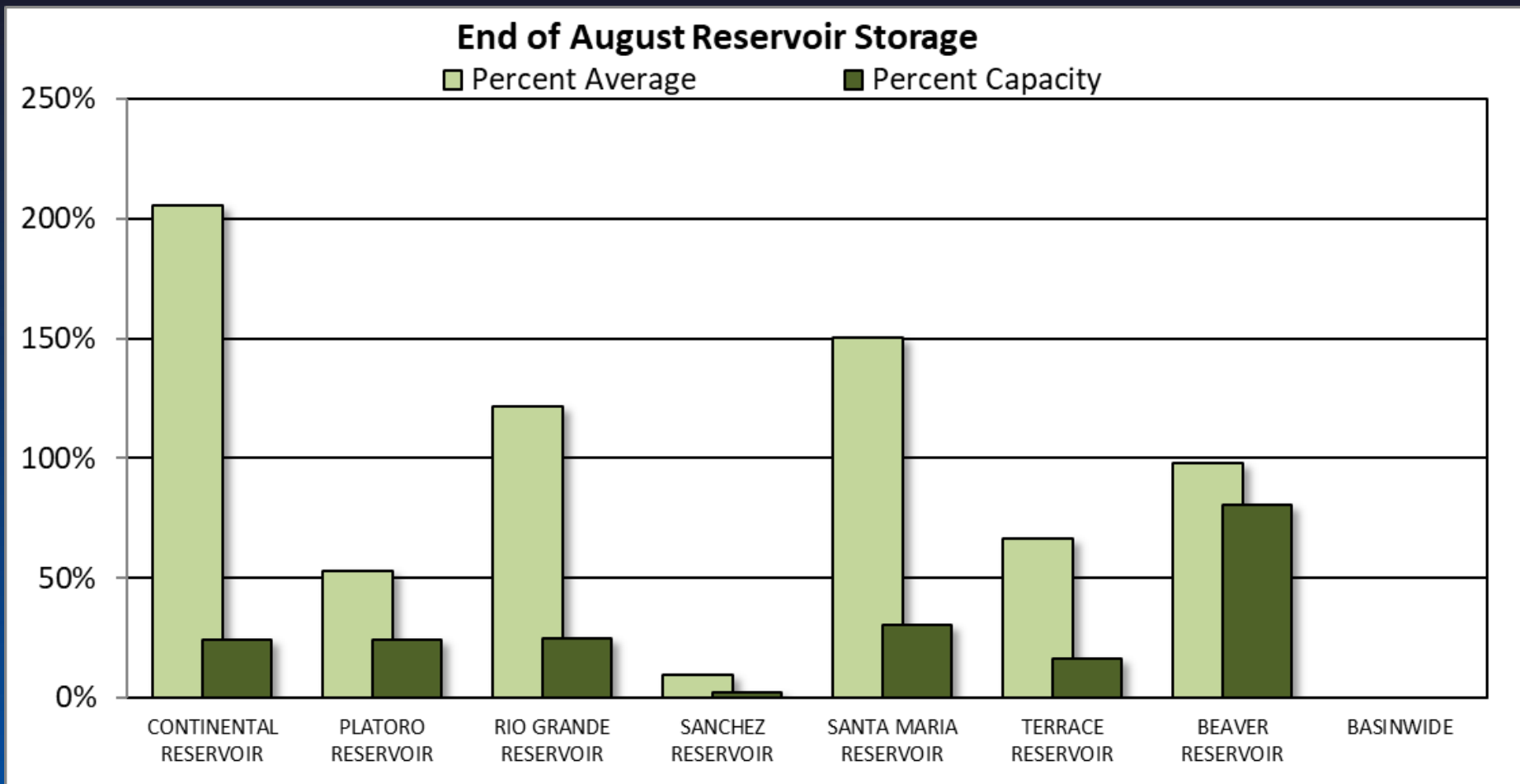


End of August Reservoir Storage

■ Percent Average

■ Percent Capacity

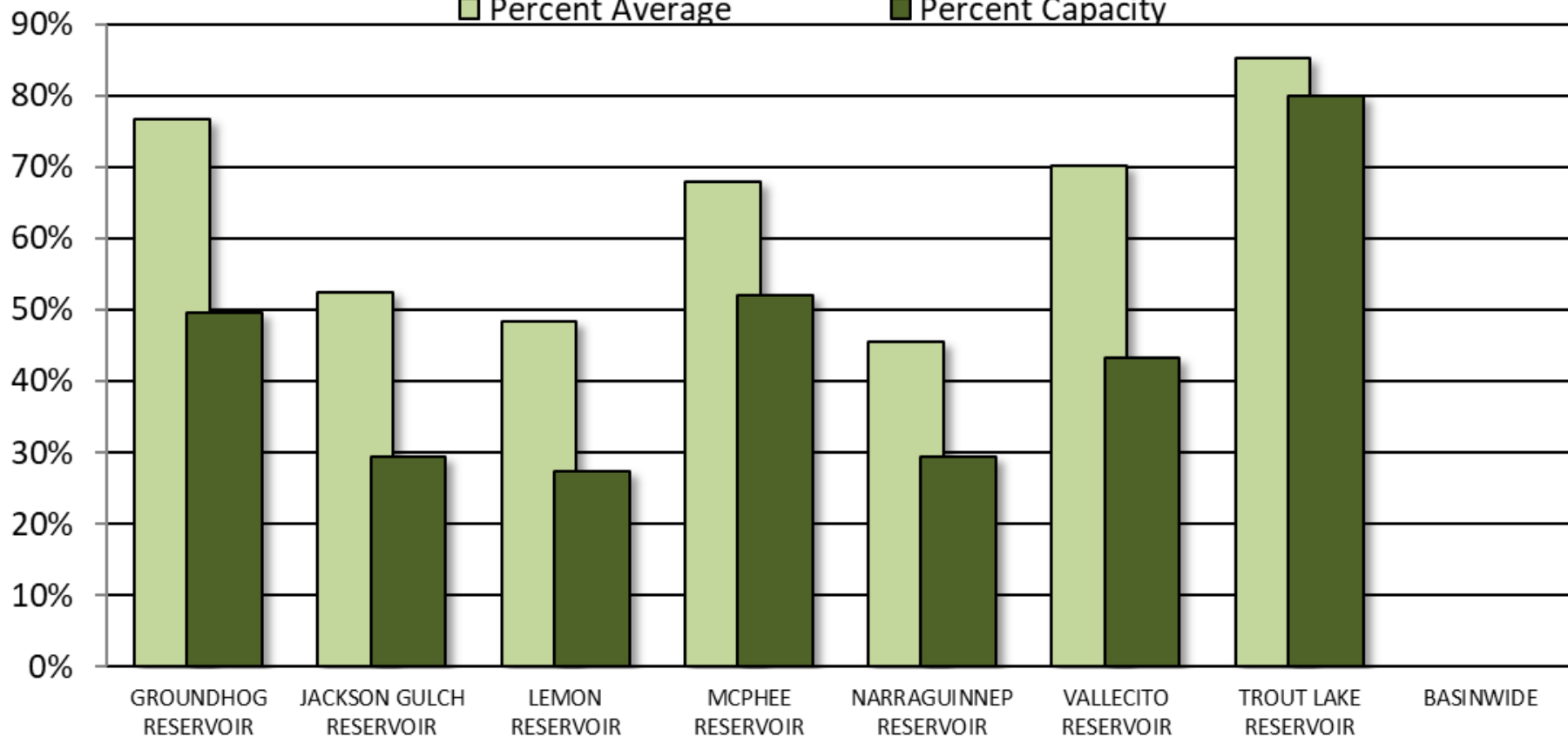


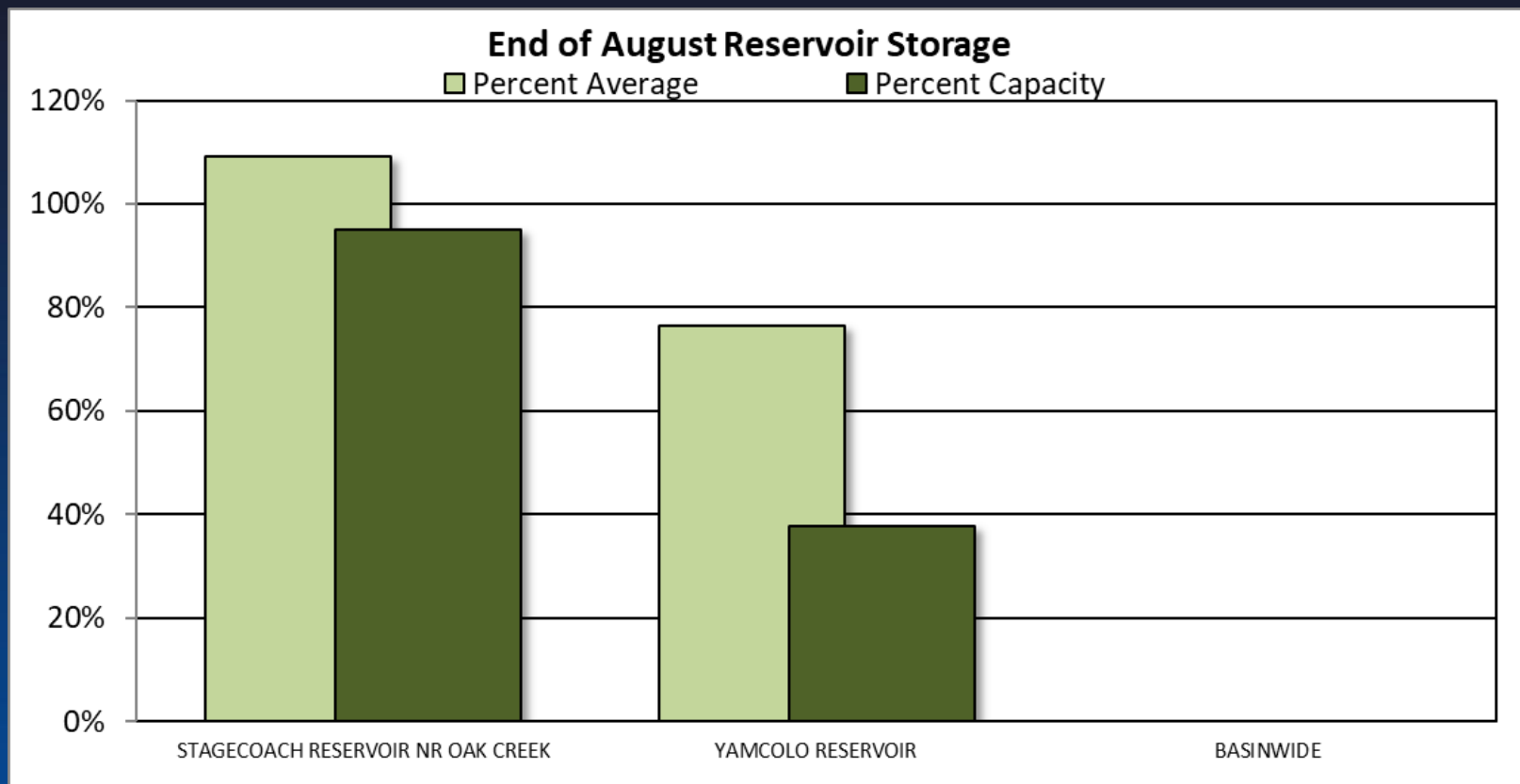


End of August Reservoir Storage

■ Percent Average

■ Percent Capacity

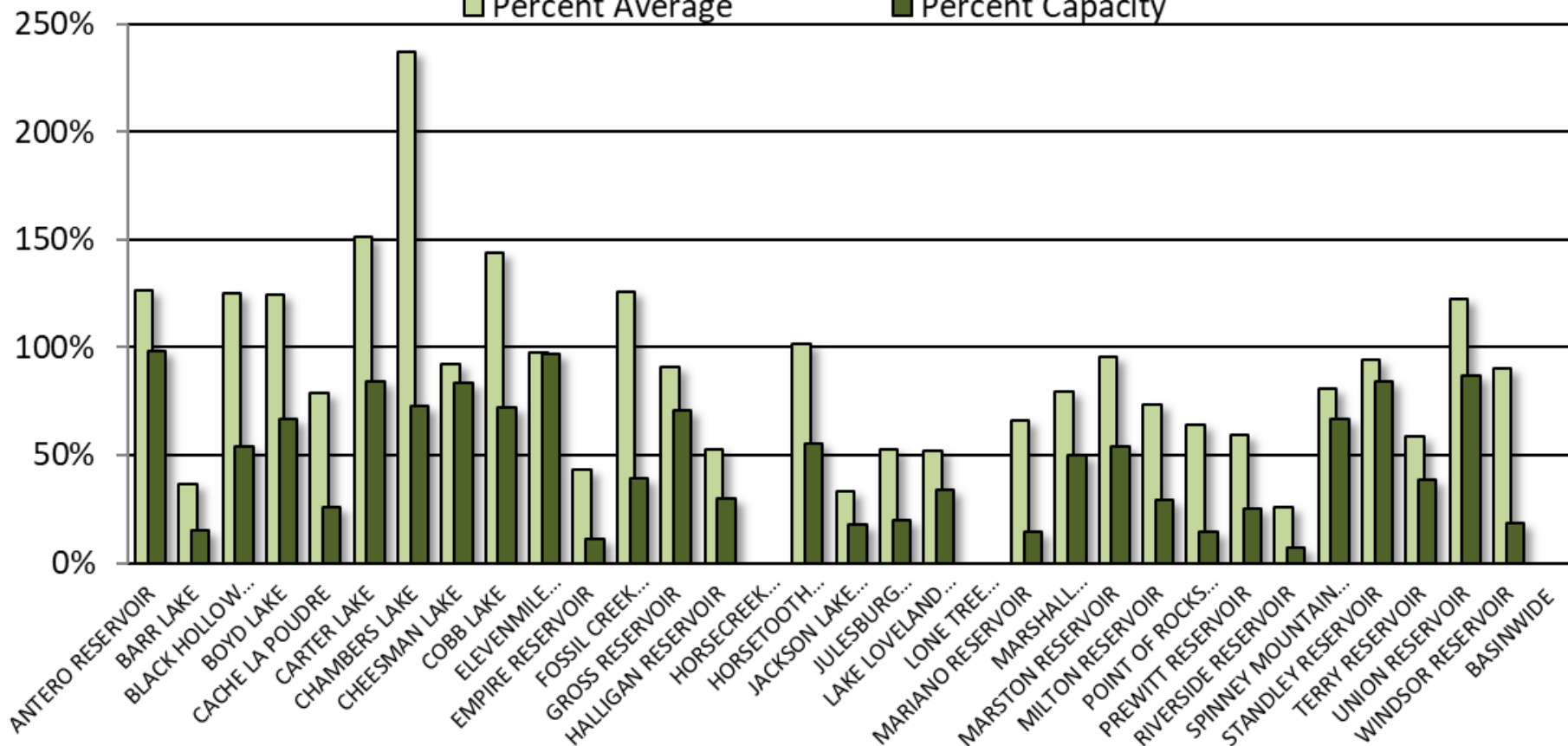




End of August Reservoir Storage

■ Percent Average

■ Percent Capacity



End of August Reservoir Storage

■ Percent Average

■ Percent Capacity

