

CPW's Upcoming Instream Flow Efforts

2020 Instream Flow Workshop

Katie Birch

Instream Flow Program Specialist

Cow Creek



**LIVE LIFE
OUTSIDE**

New Direction of CPW's ISF Candidates

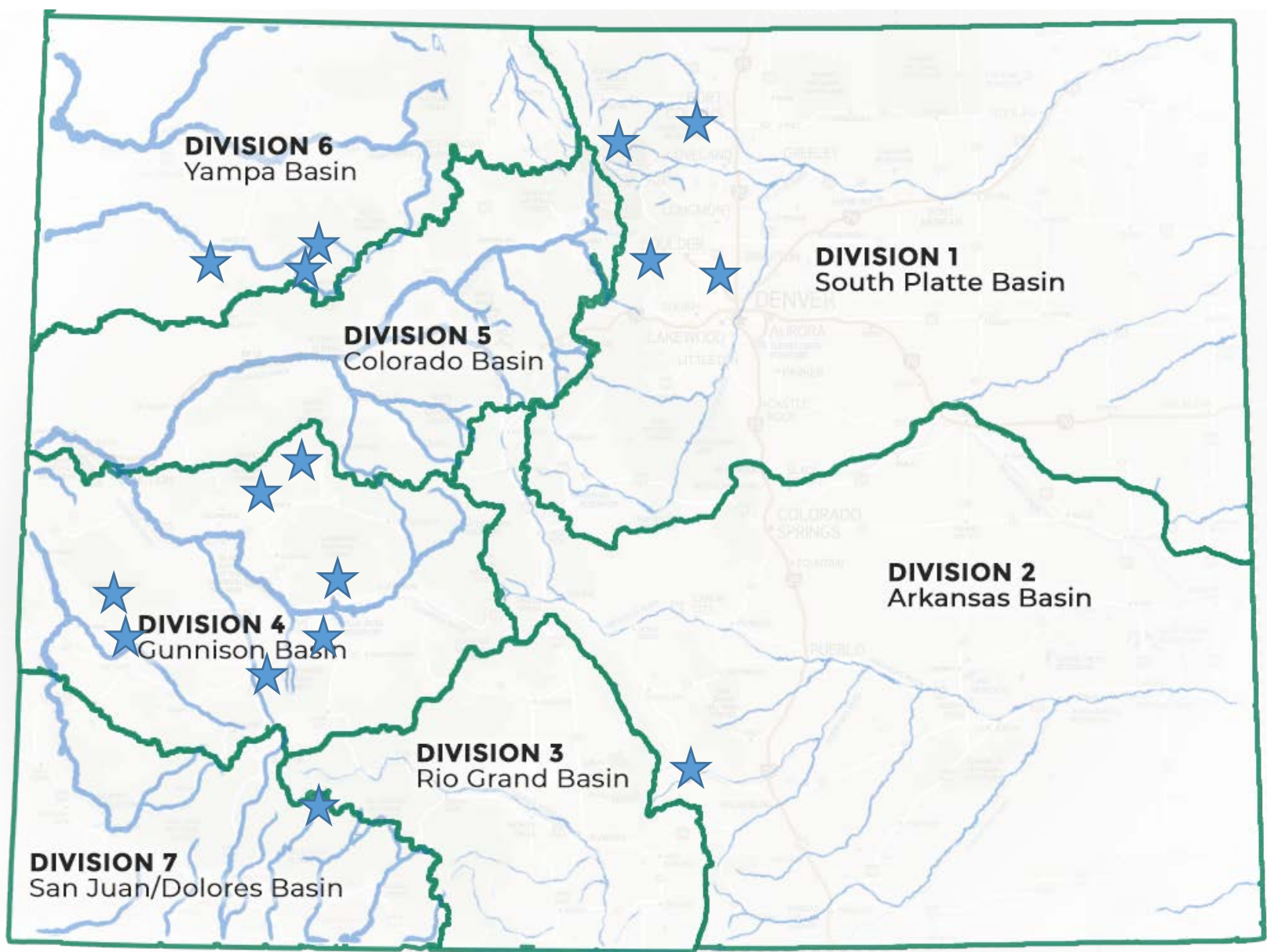
- ❖ Focus on high conservation and recreational value fish populations
- ❖ Leveraging local CPW staff knowledge
- ❖ Continue to work with project partners (Larimer County, NPS, USFS)
- ❖ More transparency, advanced notice, and vetting



Big Fish Creek



LIVE LIFE
OUTSIDE



LIVE LIFE
OUTSIDE

Continuation of Past Recommendations

6 - White River Basin

- ❖ Continuation of a past effort targeting native trout (and important recreational fishery in the North and South Fork)
- ❖ Linkage between flows and algae



LIVE LIFE
OUTSIDE

Recommendations in the Upper White River Basin

2019:

❖ North Fork White River tributaries (Postponed)

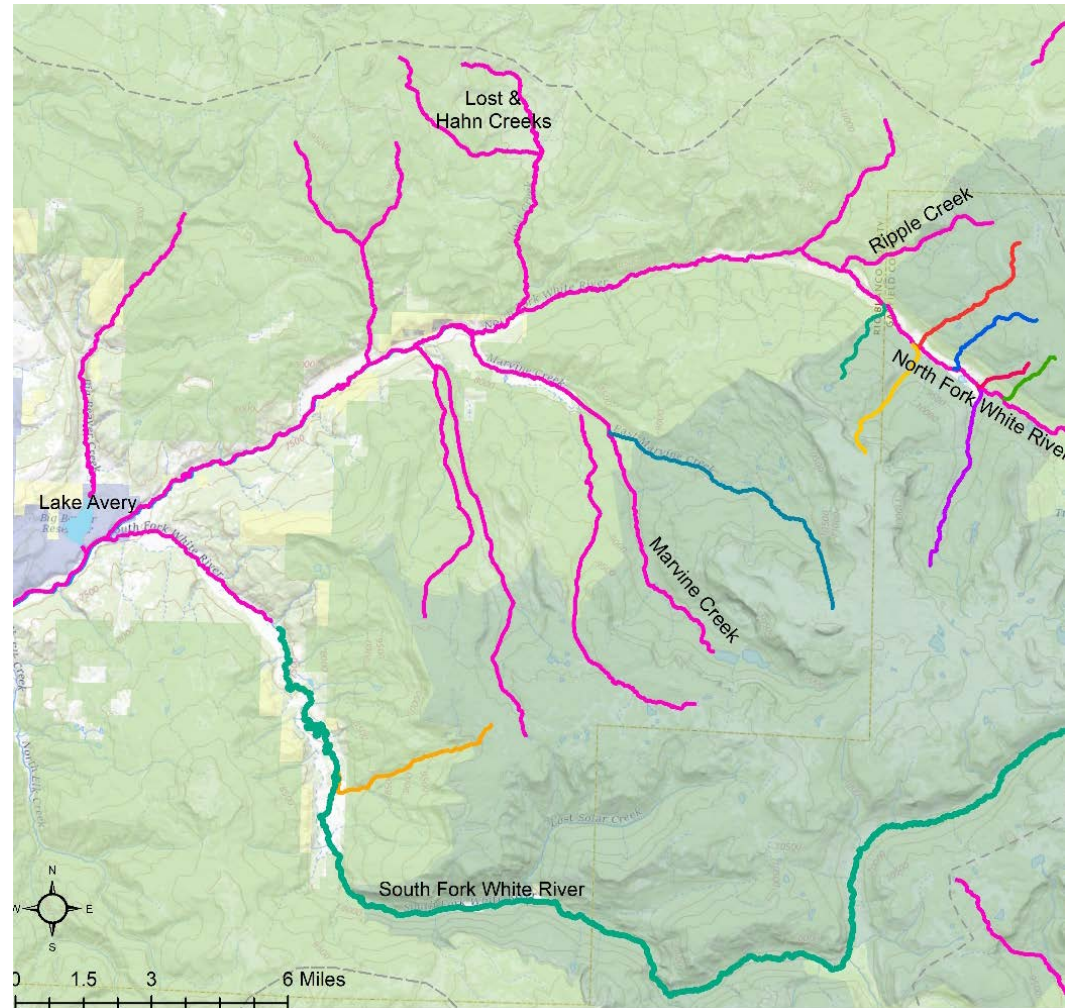
- ❖ Mirror Creek
- ❖ Bear Creek
- ❖ Picket Pin Creek
- ❖ Paradise Creek
- ❖ Hauskins Creek
- ❖ Lynx Creek
- ❖ Big Fish Creek

❖ East Marvine Creek (Postponed)

2020 and beyond:

❖ South Fork White River (and tributaries)

- ❖ Hill Creek



Decreed ISF Reaches shown in Pink

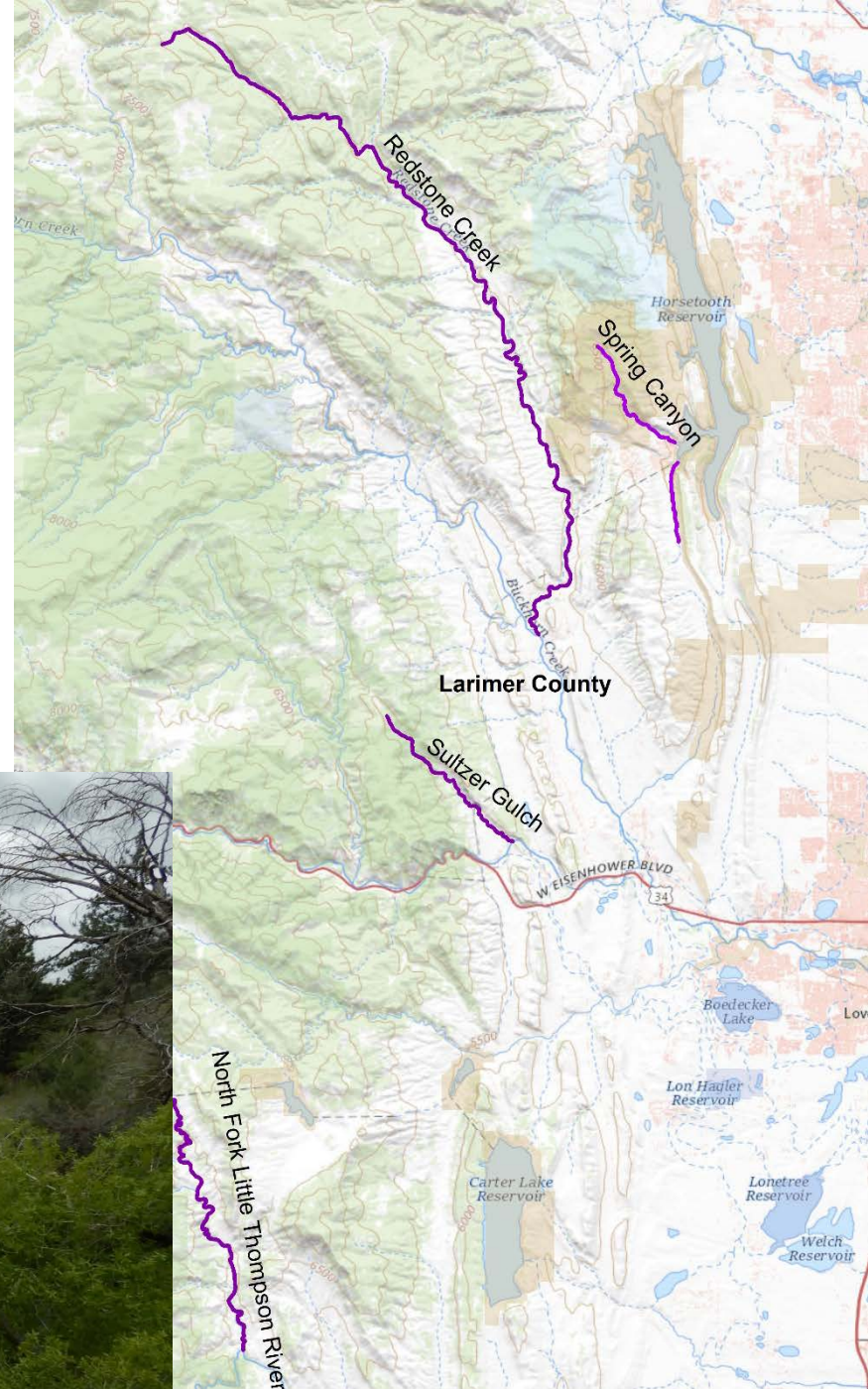


Continuation of Past Efforts

1 - South Platte Basin

In partnership with Larimer County:

- North Fork Little Thompson River
- Redstone Creek
- Sultzer Gulch
- Spring Canyon



Continuation of Past Efforts

1 - South Platte Basin

Unnamed tributary
to Duck Creek
(a.k.a. Square Tops
Creek)



Greenback Cutthroat Trout

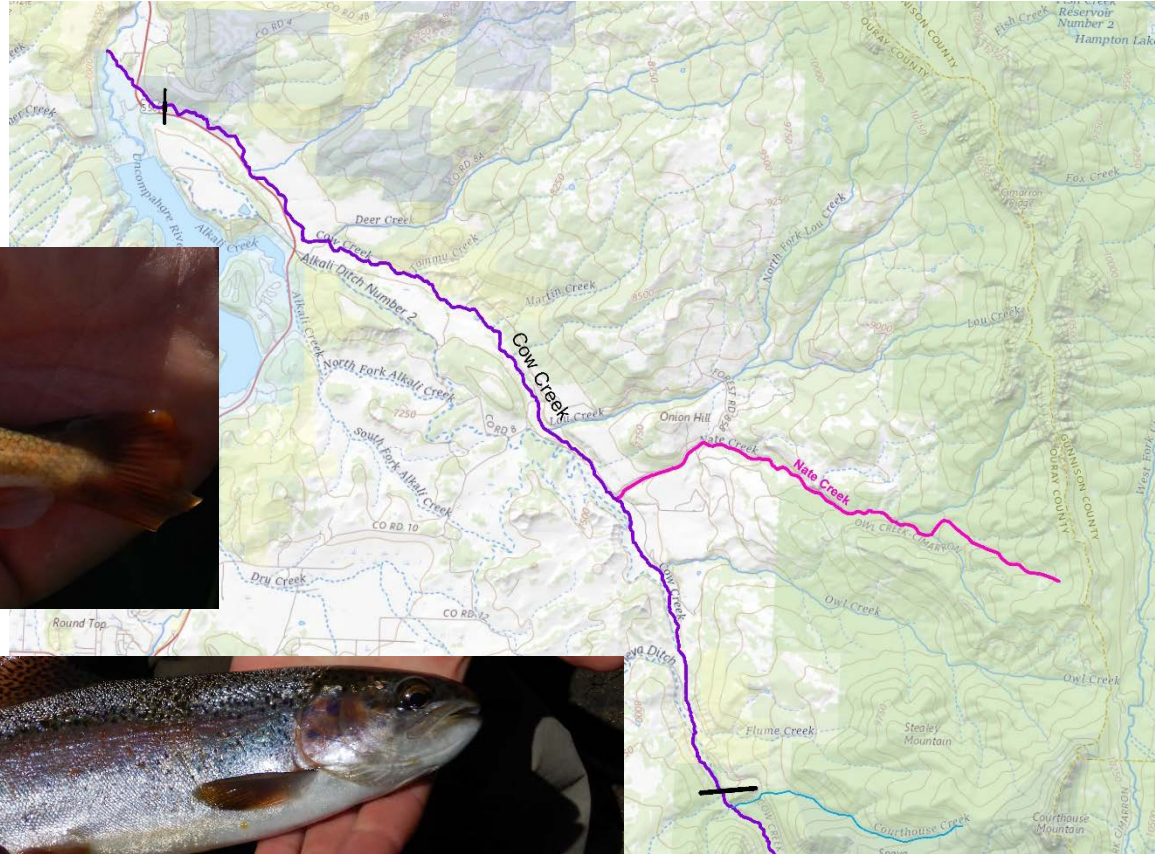


LIVE LIFE
OUTSIDE

Continuation of Past Efforts

4 - Gunnison Basin

Cow Creek near Billy Creek
State Wildlife Area



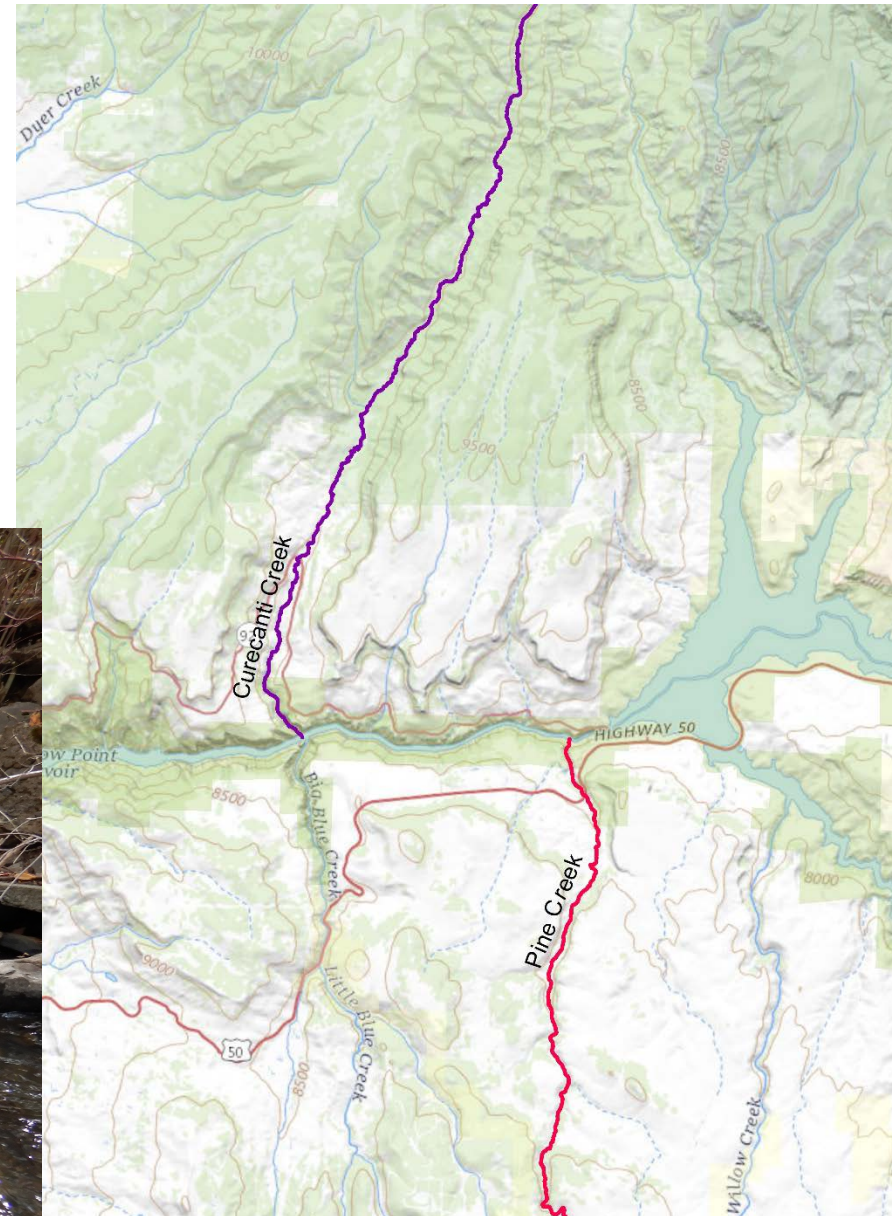
LIVE LIFE
OUTSIDE

Continuation of Past Efforts *and New*

4 - Gunnison Basin

In Partnership with Curecanti
NRA/NPS:

- Pine Creek (continue to refine)
- Curecanti Creek (potential enlargement)

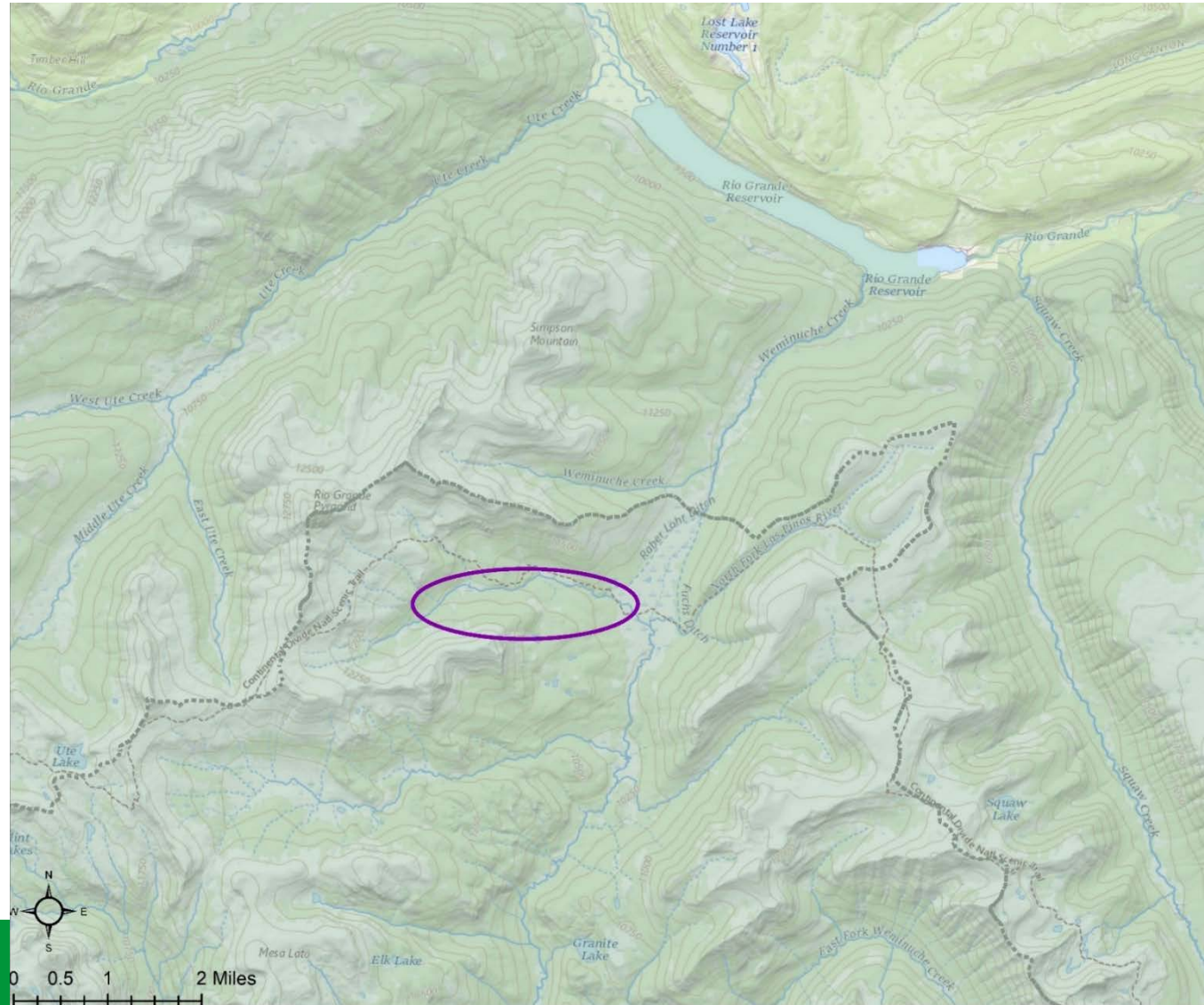


Continuation of Past Efforts

7 - San Juan/Dolores Basins

Rincon La Vaca Creek

- Memorialized bypass agreement below CPW's TB Weminuche Pass Ditch
- Support from USFS



LIVE LIFE
OUTSIDE

New Native Species Efforts

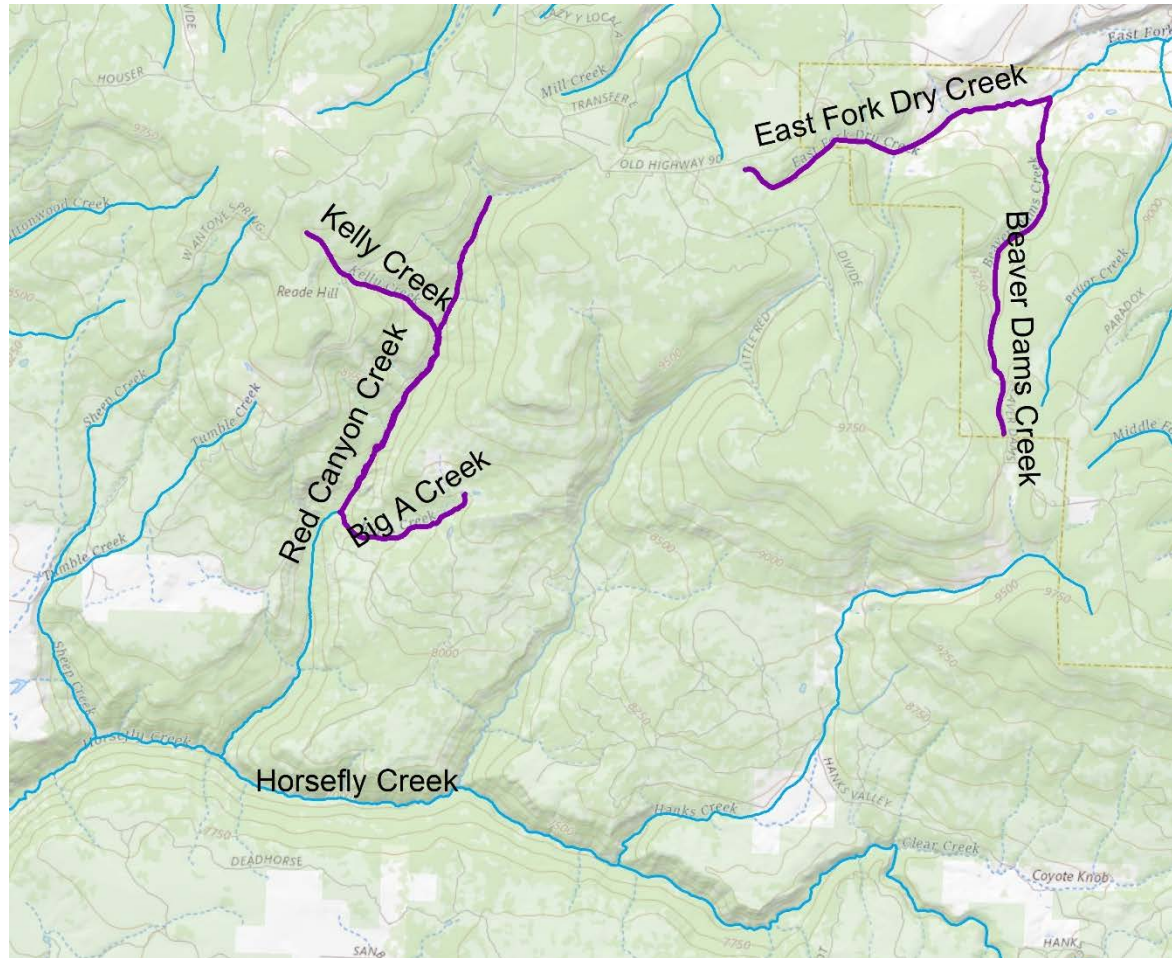
4 - Gunnison Basin

North Fork of the Gunnison

- West Hubbard, Middle Hubbard, and Main Hubbard Creeks

Uncompahgre Plateau

- Beaver Ponds Creek & East Fork Dry Creek
- Red Canyon Creek, Kelly Creek, Big A Creek



LIVE LIFE
OUTSIDE

New Native Species Efforts

1 – South Platte Basin

- Dry Gulch
- Herman Gulch (enlargement)



Greenback Cutthroat Trout



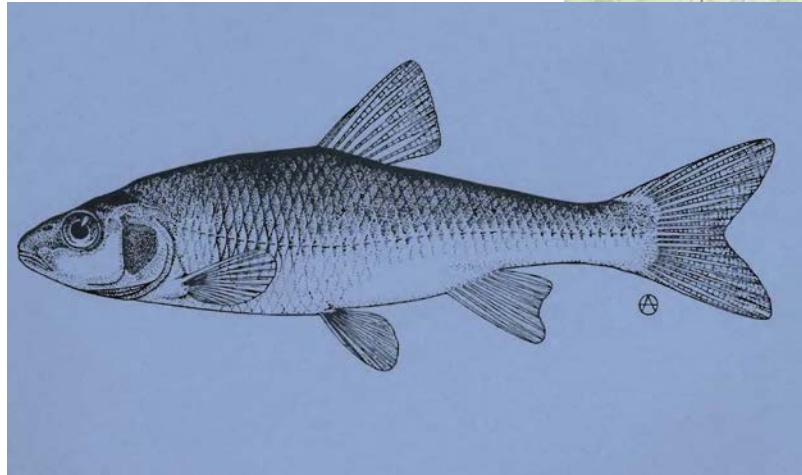
LIVE LIFE
OUTSIDE

New Native Species Efforts

1 - South Platte Basin

West Plum Creek (Multiple Segments) & Garber Creek

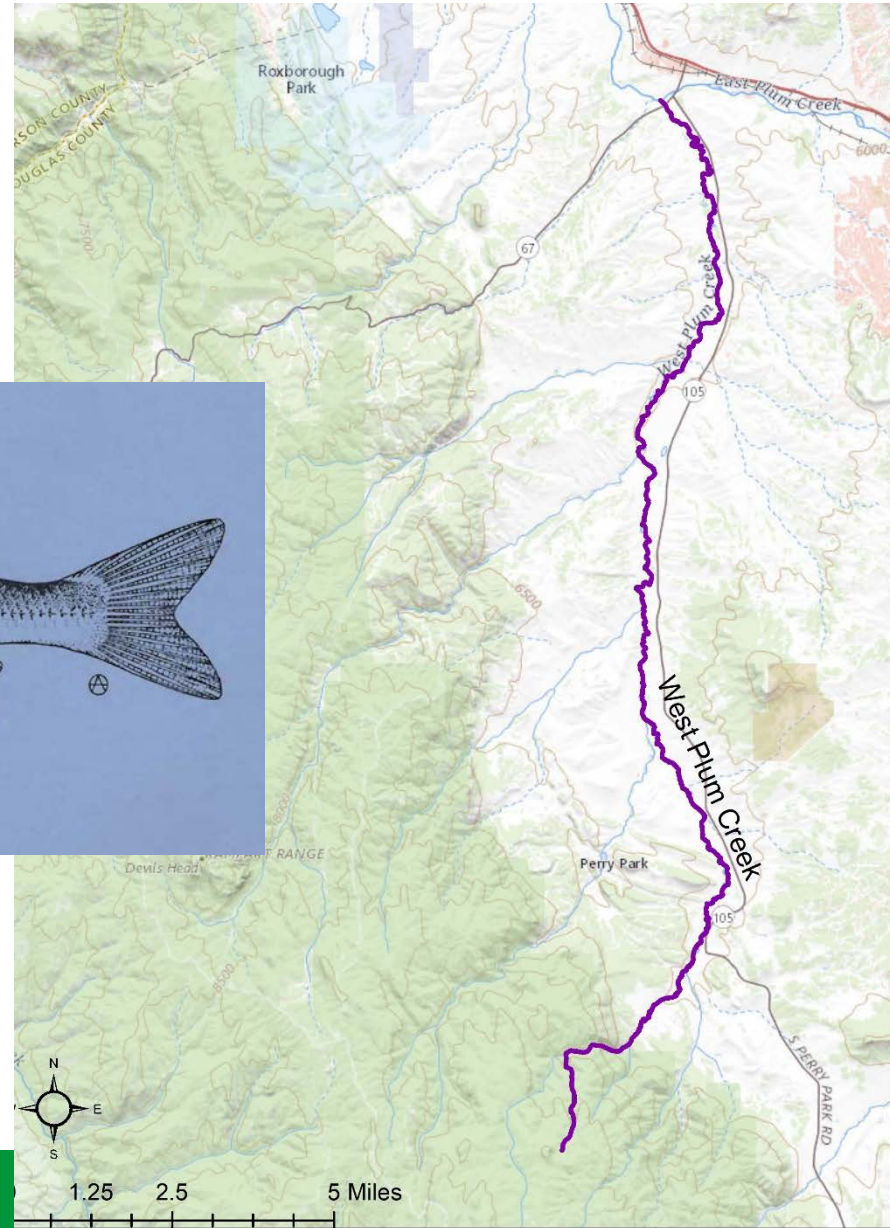
- Important transitional fishery



Northern Redbelly Dace

Common Shiner

Plus other native warm-water species



LIVE LIFE
OUTSIDE

New Native Species Efforts

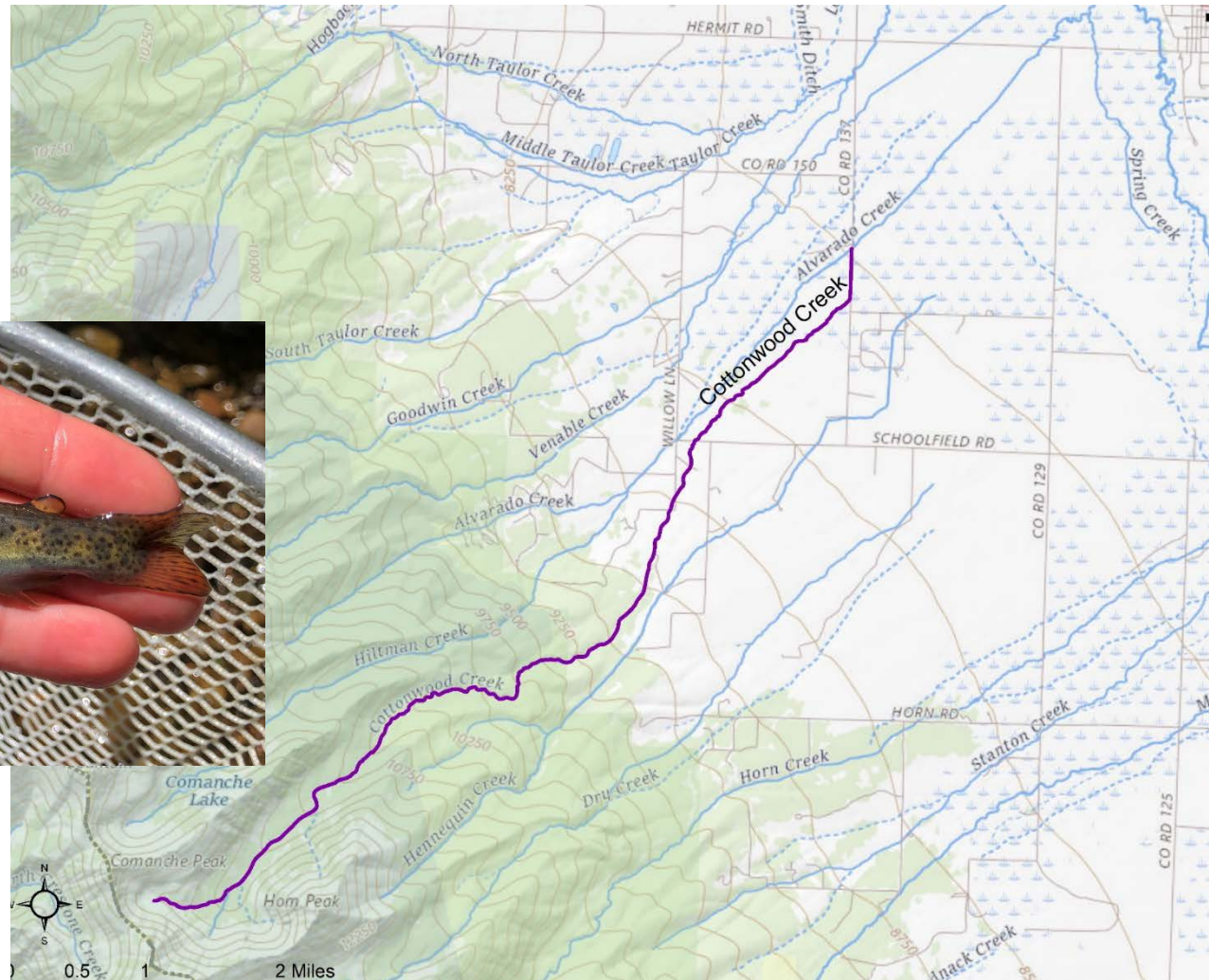
2 - Arkansas Basin

Cottonwood Creek

- Lower terminus near USFS Boundary



Hayden Creek Cutthroat Trout



LIVE LIFE
OUTSIDE



Questions/Concerns/Comments?

Katie Birch
CPW ISF Program Specialist
303-291-7335
Katie.birch@state.co.us