

IMPLEMENTATION WORKING GROUP

MARCH 19, 2019

- Process and Branding
- Procurement + Contracting
- IPP Data Gaps and Database
- Project Tiers and Terminology
- Timeline for Basin/Water Plan Updates



CWCB PROCESS

GOALS

1. On Time

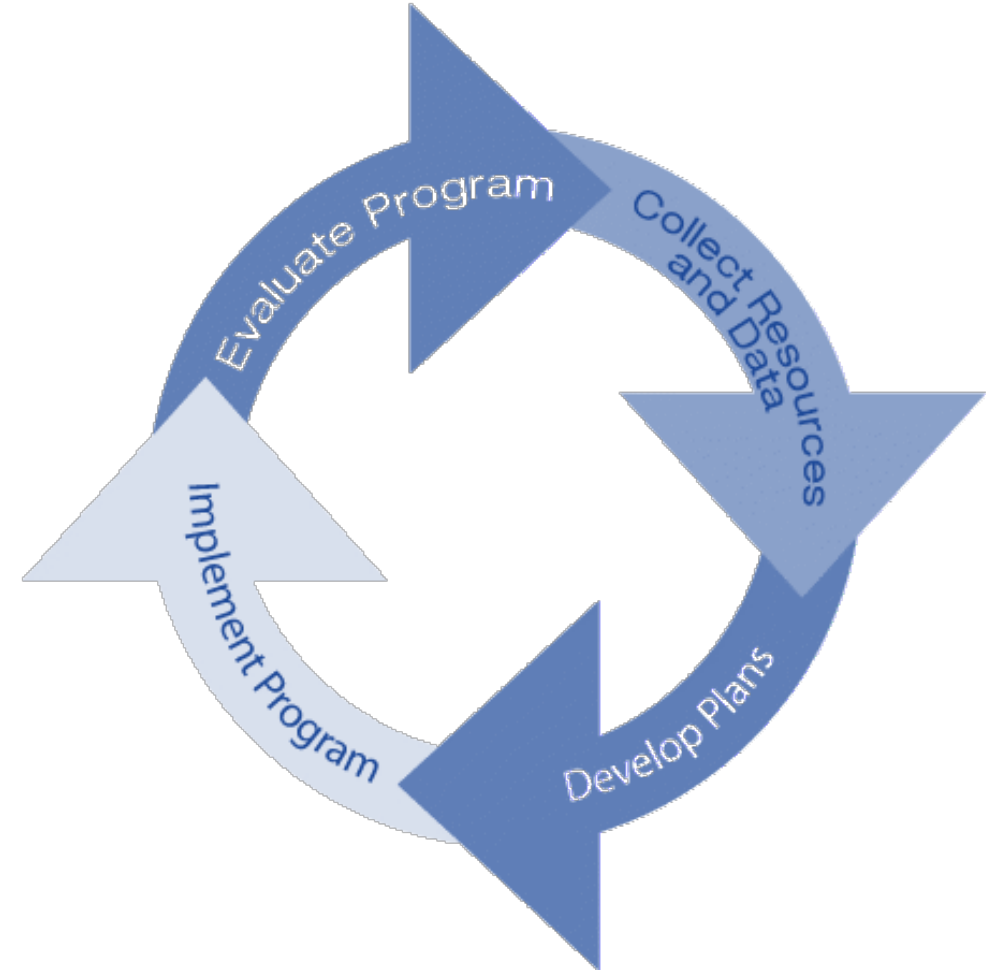
- Water Plan goals

2. Save Time

- Streamline updates

3. Improve Process

- Enhanced transparency, data, reporting and collaboration



RESPONSIVE TO BASIN
FEEDBACK

- Better understanding of CWCB process/needs
- Support basin BIP and IPP update needs (e.g. funds; staff)
- Support project prioritization methods (not oversight)
- Support implementation and advocate for funding

TODAY'S AGENDA

- BIP Update Scope
- Plan Integration
- Project Tiers + Terminology
- Technical Update Assumptions
+ Recommendations

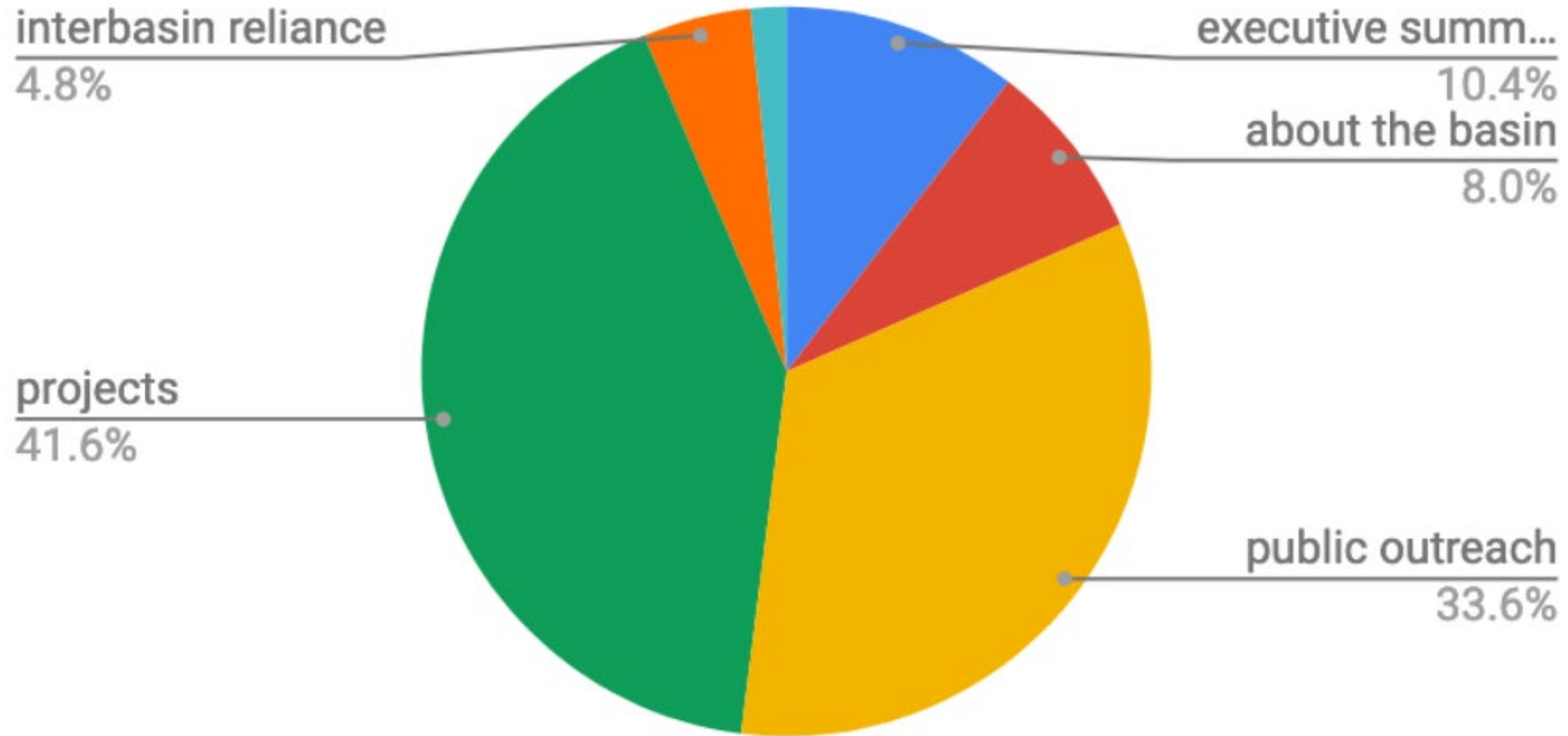


SCOPING THE

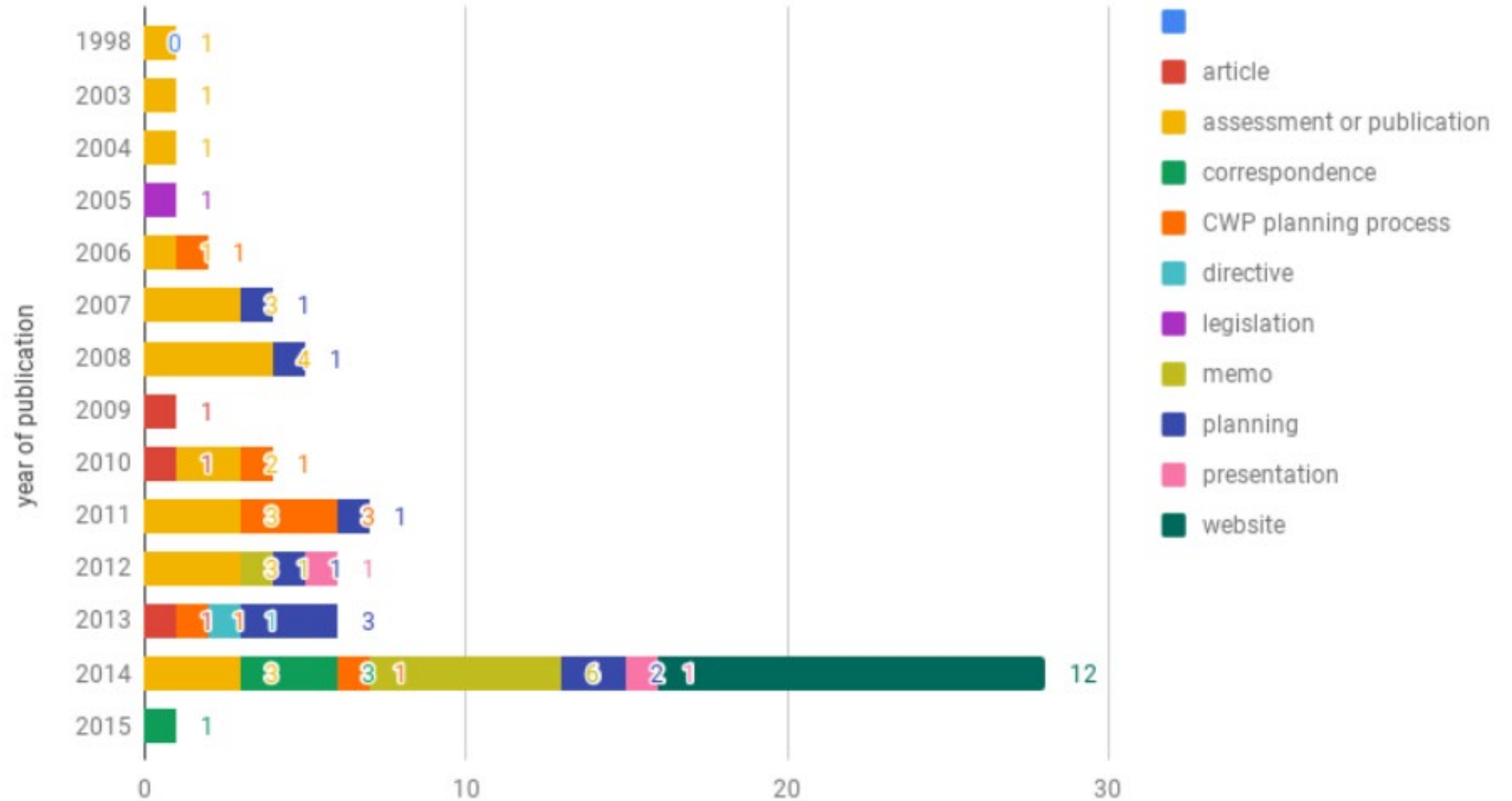
BASIN UPDATES

IMPLEMENTATION WORKING GROUP

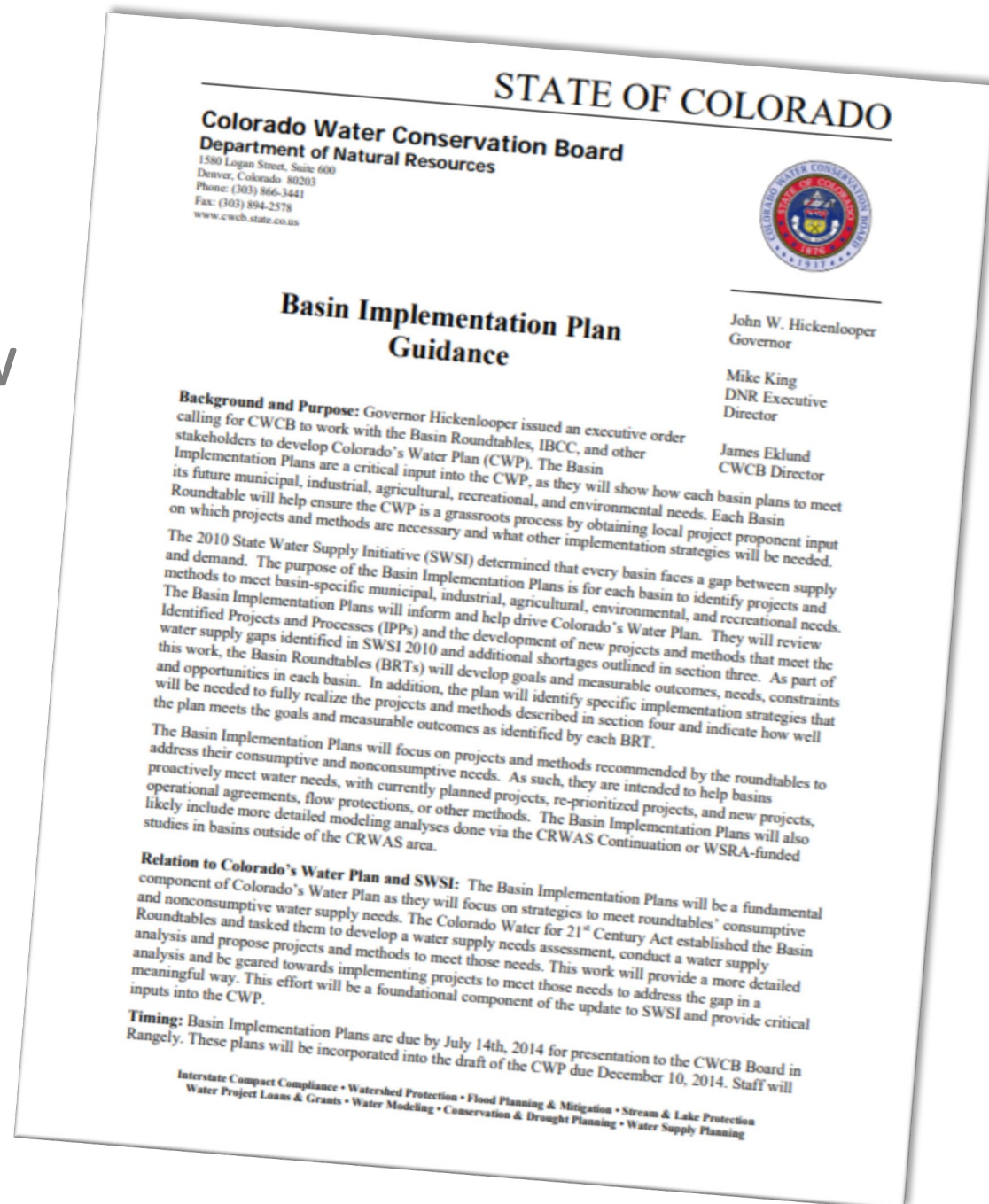
UPDATING THE
BIPS



References cited in 2015 Gunnison BIP



- Providing Basin-specific review of potential BIP update areas
- Asking for Help identifying goals for the C-9 Summit
- Collaborating on Roadmap for updating plans



BASIN PLAN

INTEGRATION

IMPLEMENTATION WORKING GROUP

- Why types of plans need to be integrated into plans?
 - Stream Management Plans
 - Master Plans
 - Water Quality Plans
 - Climate and Resilience Plans
 - Others?

HELPING CREATE

PROJECT TIERS

IMPLEMENTATION WORKING GROUP

DATA GAPS IN PROJECT LISTS

Example

Data Field/Column*	Arkansas	Colorado	Gunnison	North Platte	Rio Grande	South Platte / Metro	Southwest	Yampa / White
IPP_ID	X		X	X	X	X	X	X
IPP_Name	X		X	X	X	X	X	X
IPP_Description	X	X	X	X			X	X
Basin						X		
Municipal_Ind_Need	X	X	X		X		X	
Agricultural_Need	X	X	X		X		X	
Envr_Rec_Need	X	X	X	X	X		X	X
Admin_Need					X			
Multiple_Needs	X	X	X		X		X	
WaterSource_GNIS_Name								
WaterSource_GNIS_ID								
WaterDestination								
Latitude	X		X	X			X	X
Longitude	X		X	X			X	X
Phase	X	X	X				X	
Yield	X	X	X			X		
Yield_Units	X	X	X			X		
Estimated_Cost	X	X	X		X	X		
Contact	X		X			X	X	
Proponents	X	X	X		X	X	X	X

IPP DATA ENTRY

- | | |
|------------------------------|----------------------------|
| 1. Project ID | 11. Water Source (GNIS ID) |
| 2. Project Name | 12. Water Destination |
| 3. Status | 13. Latitude + Longitude |
| 4. Project Type or Keyword | 14. County |
| 5. Lead Proponent | 15. Water District |
| 6. Lead Contact | 16. Estimated Water Yield |
| 7. Basin | 17. Yield Units |
| 8. % Funds Go To Support | 18. Estimated Capacity |
| 9. Multiple Needs (Y/N) | 19. Capacity Units |
| 10. Water Source (GNIS Name) | 20. Estimated Cost |

MATRIX

- Tiers/Ranking may be helpful
- Terminology is key
 - Shovel Ready
 - Feasibility Study
 - Concept
- May need to also consider:
 - EX: Water rights; permitting status
 - EX: Chicken & Egg
- Deadlines help

Basin Roundtable Project Ranking Spreadsheet					Use the Drop Down Menus Below to Assign Tiers
Select the Project Phase from the drop down menu in the box below (Implementation, Feasibility or Concept)					
PROJECT PHASE	Tier 1	Tier 2	Tier 3	Tier 4	Assigned Tier
Implementation	Shovel Ready (immediately implementable); does not apply for a "Concept" project.	Can start within the year.	Needs at least a year to start.	Not Shown.	Tier 1
Rank all of the following using the drop down menu (right)					
STRATEGIC ALIGNMENT	Tier 1	Tier 2	Tier 3	Tier 4	Assigned Tier
Basin Plans	Strongly aligns with Basin Implementation Plans	Somewhat aligned with Basin Implementation Plan.	Not as well aligned with Basin Implementation Plan.	Not Shown.	Tier 3
Local Plans	Extensive Local Planning, Organizational support and water rights support the project.	Some local planning or organizational support for the project; water rights may or may not be explicitly identified.	Not clearly identified in any local plan, organizational effort; water rights concerns are noted; may be under consideration or going through a permitting process.	Not Shown.	
Water Plan	Meets at least 3 Goals in the Colorado Water Plan.	Meets at least 2 Goals in the Colorado Water Plan.	Meets only 1 goal in the Water Plan.	Not Shown.	
MINIMUM CRITERIA	Tier 1	Tier 2	Tier 3	Tier 4	Assigned Tier
Meets Core Data Needs (list of 20)	Includes all 20 Criteria	Meets critical subset (TBD)	Provides only a few details; critical subset is not complete.	Not Shown.	Tier 3
NEED	Tier 1	Tier 2	Tier 3	Tier 4	Assigned Tier
Criticality	Critical to basin (would cause severe impact to the basin if the project didn't move forward; (Basin Priority and/or Emergency Need); Has clear metrics for tracking and completion date.	Significant basin effort (fully aligns with basin goals); implementation or plan would advance basin goals; has clear metrics for tracking and completion date.	Project could be of basin interest but may not as directly advance basin goals; may not have clear metrics and/or may not have a clear end date or objectives.	Not Shown.	Tier 1
PRIORITY CATEGORIZATION CALCULATED FROM COMBINATION OF TIERS ABOVE					PRIORITY CATEGORIZATION
Level of Basin Support	Tier 1	Tier 2	Tier 3	Tier 4	Tier 3
	Priority Basin Support	Full Basin Support	Support of Concept	Not Currently Supported	

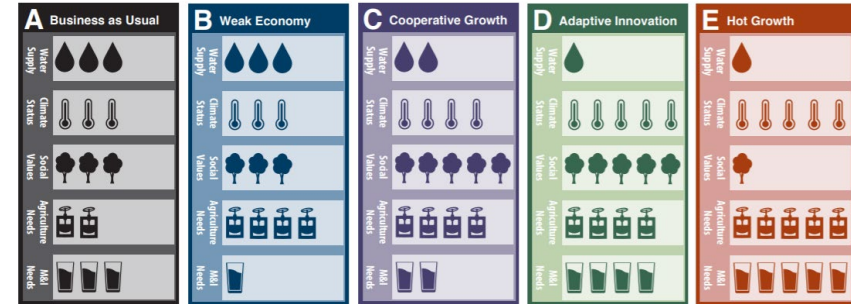
SCENARIOS & KEY ASSUMPTIONS

IMPLEMENTATION WORKING GROUP

MODELING ASSUMPTION

IMPACTS

- TAGS set direction:
 - EX: Use scenario planning
 - EX: Creates data and questions?
 - Do basins model top projects?
 - If they model should they use all scenarios?
 - Do they change assumptions that were made?
- Use of CDSS has raised additional questions (beyond TAG input)
 - EX: Free River
 - Can't be split between Ag and Muni
 - Not modeling IPPs (what matches current operations)?
 - Leave it in the river potential impacts compacts?



RECOMMENDATIONS

& BRT ROADMAP

IMPLEMENTATION WORKING GROUP

- WHAT IT IS NOT?

- Not the final say
 - C-9 Summit will kick-off an iterative process
 - Local experts and basin input is vital and is absolutely the goal

- WHAT IT IS

- Best informed direction to add value to BIP Updates
 - C-9 Summit will highlight collective guidance from this group

Name one thing that has resonated or you feel is working well in this group?

Name one thing you'd like to see or change?

OUTLING

NEXT STEPS

IMPLEMENTATION WORKING GROUP

- Input on Today's Discussion (and earlier outputs)
 - Terminology + Tier Matrix
 - Scope BIP Update
 - Plan Integration
- Deep dive into BIP reviews
- Start to discuss recommendation in SWSI/Technical Update

QUESTIONS & COMMENTS?

