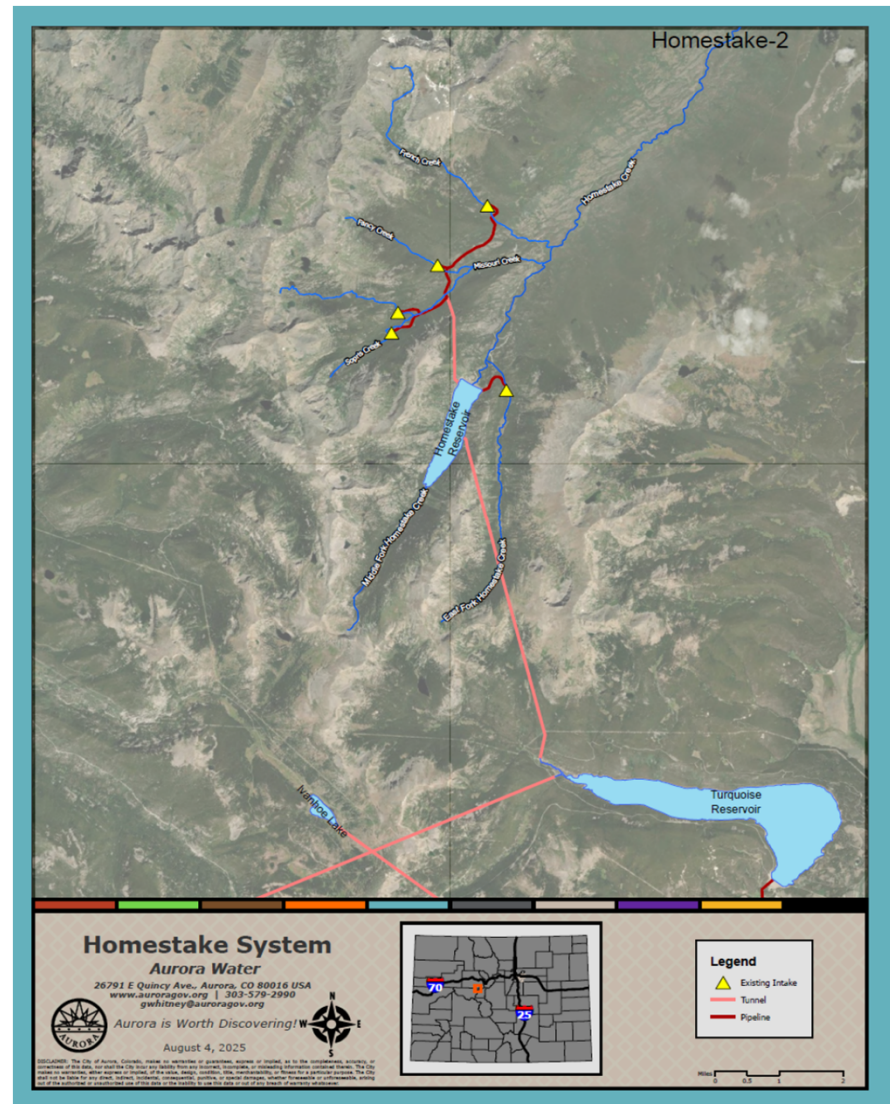


# OVERVIEW OF THE HOMESTAKE PROJECT

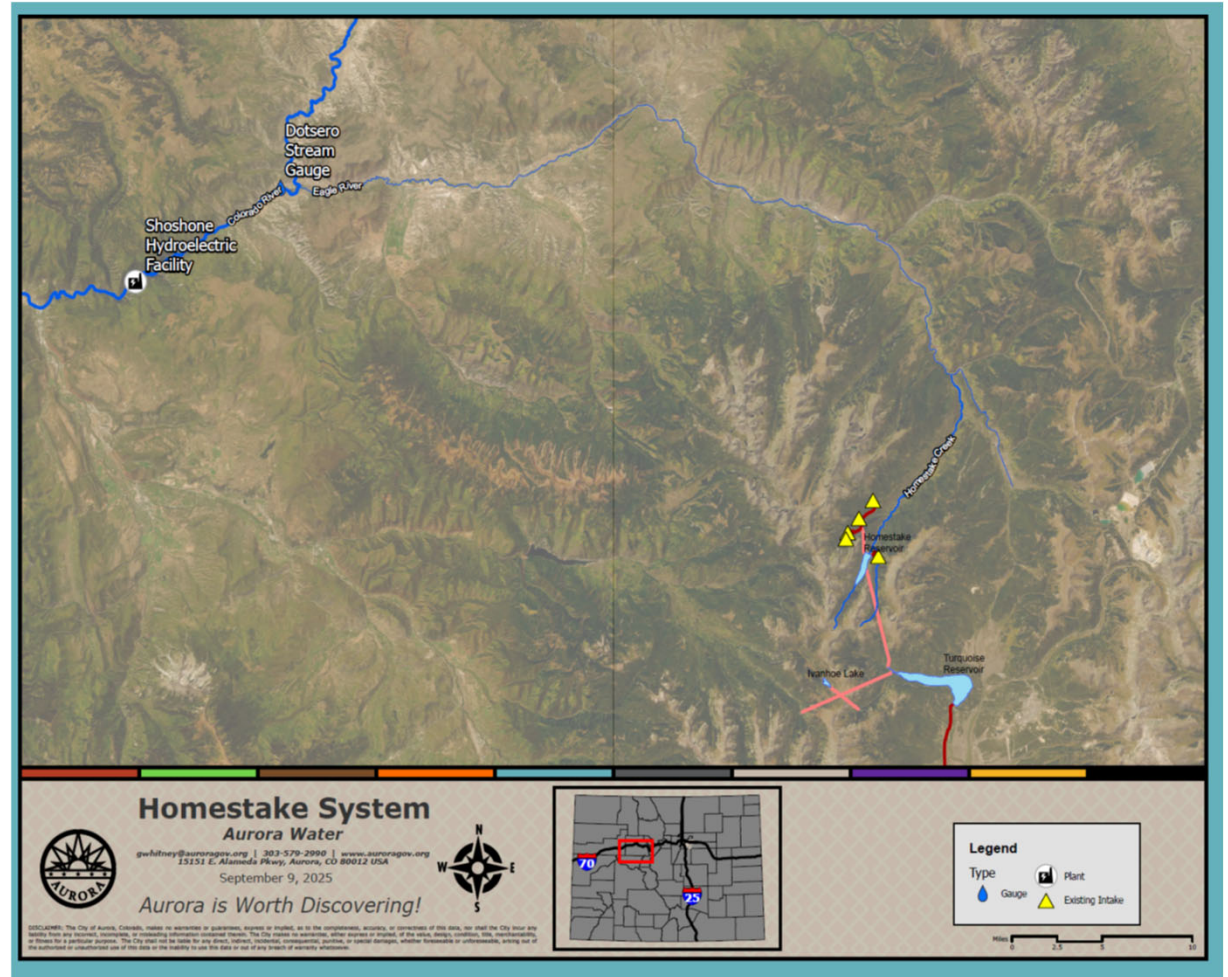




## OVERVIEW OF THE HOMESTAKE PROJECT

- Homestake Project is a Joint use water project that delivers water to over 900,000 residents in the cities of Aurora and Colorado Springs.
- Developed and built in the 1950's with water rights appropriated in the same decade.
- The Homestake Project delivers water to Aurora and Colorado Springs and was developed on the operations and administration of the past 70+ years.

# Homestake Project Location vis a vis Shoshone



# Impacts on the Homestake Project

- Model results show the following impacts on the Homestake Project if Shoshone calls and diversions increase:
  - Homestake Project water rights are out-of-priority and curtailed more often.
  - Diversions to Homestake Reservoir and through Homestake Tunnel decrease.
  - Drawdown at Homestake Reservoir increases.

# Impacts on Homestake Reservoir

- If Homestake Project water rights are called out more often, less water is diverted to Homestake Reservoir and it is drawn down more to maintain deliveries through Homestake Tunnel.
- Under the BBA Volumetric Scenario:
  - The maximum decrease in Homestake Reservoir contents was almost 7,000 ac-ft.
  - Homestake Reservoir contents decreased by more than 500 ac-ft in 168 months (54% of the model study period from water year 1988-2013)

# Impacts on Homestake Tunnel Deliveries

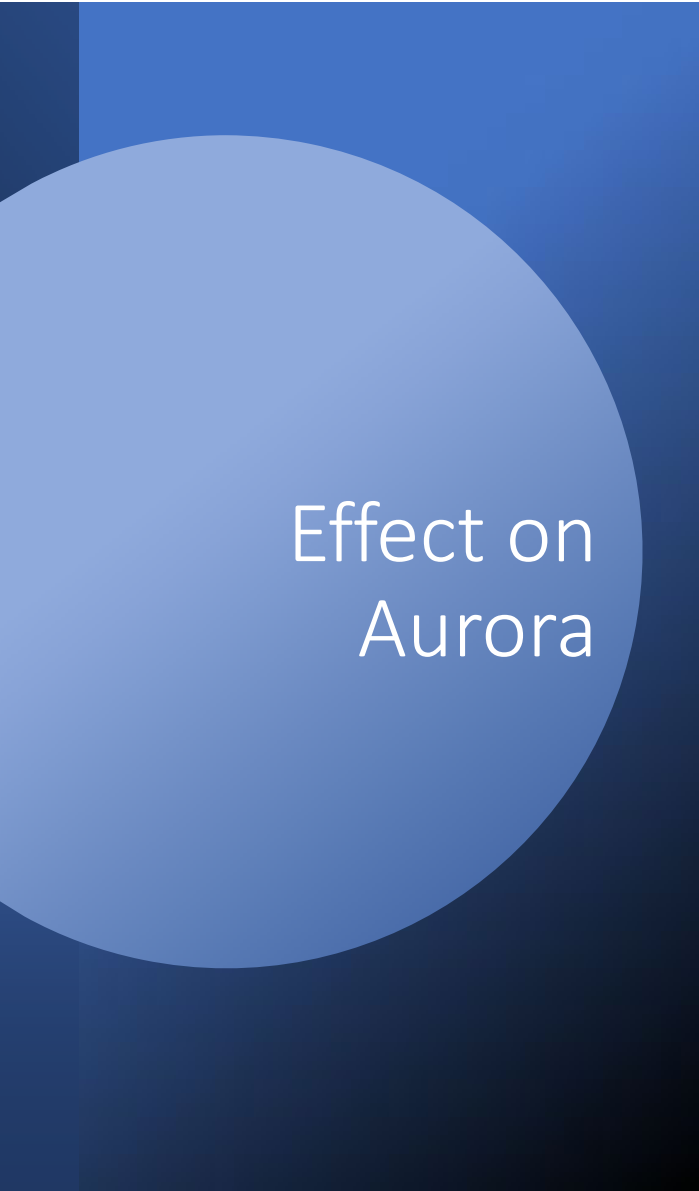
- When Homestake Project water rights are called out, deliveries through Homestake Tunnel consist of releases from Homestake Reservoir.
- When Homestake Reservoir is drawn down completely, deliveries through Homestake Tunnel are reduced.
- Under the BBA Volumetric Scenario, annual Homestake Tunnel deliveries decrease by a maximum of 6,047 ac-ft.





## Effect on Colorado Springs Utilities

- Considering first use and reuse, Homestake Project water comprises ~21% of treated water delivered to Colorado Springs Utilities' customers.
- A reduction of Homestake Project yield due to an expansion of use of the Shoshone Water Rights would impair Colorado Springs Utilities' ability to meet the needs of its ~500,000 customers.



## Effect on Aurora

- Aurora gets about 25% of its water supply from the Colorado River Basin.
- Homestake Project is 70% of that supply.
- Changes to the Shoshone Water Rights or expansion of the Shoshone Water Rights would impact Aurora supplies and affect the ability to provide clean water to its 400,000 residents.
- Heather Thompson's analysis shows that under BBA's Volumetric Scenario, there is a maximum annual decrease in Homestake Reservoir of almost 7,000 acre-feet, and decrease of more than 500 acre-feet in 168 months of the study period. Homestake Tunnel Deliveries decrease by a maximum of 6,047 acre-feet.
- Heather Thompson's analysis of BBA's Volumetric Scenario show that there is significant injury to the Homestake Project.