



WATER SUPPLY RESERVE FUND ANNUAL REPORT 2020-2021

Submitted by the Colorado Water Conservation Board to the House of Representatives House Rural Affairs and Natural Resources Committee and the Senate Agriculture and Natural Resources Committee.

October 29, 2021

OVERVIEW

The Water Supply Reserve Fund (referred to as WSRF hereafter) is administered by the Colorado Water Conservation Board (CWCB) in collaboration with the Interbasin Compact Committee (IBCC) and the nine basin roundtables which were established under House Bill 05-1177 (the Colorado Water for the 21st Century Act). Requests for funding begin at the Basin Roundtables. Applications approved by the local Roundtable are submitted to the CWCB, with most project sponsors providing significant matching funds.

Monies from the WSRF are distributed according to the WSRF Criteria and Guidelines, which were developed by the CWCB in consultation with the IBCC in collaboration with the basin roundtables. The WSRF Criteria and Guidelines are reviewed annually in October. The WSRF [Criteria and Guidelines](#), the [WSRF application](#), and other materials are available on the [CWCB website](#).

WSRF HAS GRANTED OVER \$100 MILLION TO 749 PROJECTS ACROSS COLORADO, LEVERAGING OVER \$227 MILLION IN MATCHING CONTRIBUTIONS (CASH AND IN-KIND) FROM STATE, FEDERAL AND LOCAL PARTNERS.

BACKGROUND

The WSRF was created in 2006 by Senate Bill 06-179. The legislature created WSRF to help citizens identify and meet their critical water supply and management needs. During the 2021 legislative session, Senate Bill 21-181, which moves WSRF deposits from the Severance Tax Operational Fund to the Severance Tax Perpetual Base fund, was signed into law. Funds from the WSRF may be used to:

- 1) Identify human, environmental, or recreational water needs (also commonly referred to as "Needs Assessments")
- 2) Evaluate water supplies in each basin
- 3) Build projects or identify methods to meet the water supply needs of the river basin

TABLE 1: TOTAL, APPROVED, AND REMAINING FUNDS 2006-2021

BASIN	TOTAL BASIN FUNDS	APPROVED BASIN GRANTS	BASIN FUND BALANCE
ARKANSAS	\$4,039,395	\$3,612,149	\$427,246
COLORADO	\$4,039,395	\$3,748,529	\$290,866
GUNNISON	\$4,039,395	\$3,676,957	\$362,438
METRO	\$4,039,395	\$3,367,301	\$672,094
NORTH PLATTE	\$4,039,395	\$3,470,767	\$568,627
RIO GRANDE	\$4,039,395	\$3,788,048	\$251,347
SOUTH PLATTE	\$4,039,395	\$3,533,530	\$505,865
SOUTHWEST	\$4,039,395	\$3,626,892	\$412,503
YAMPA/WHITE /GREEN	\$4,039,395	\$3,345,904	\$643,490

TABLE 2: TOTAL, APPROVED, AND REMAINING STIMULUS FUNDS 2020-2021 (*STIMULUS FUNDS INCLUDED IN WSRF TOTALS)

BASIN	TOTAL BASIN FUNDS	APPROVED BASIN GRANTS	BASIN FUND BALANCE
ARKANSAS	\$200,000	\$32,500	\$167,500
COLORADO	\$200,000	\$19,800	\$180,200
GUNNISON	\$200,000	\$69,500	\$130,500
METRO	\$200,000	\$37,500	\$162,500
NORTH PLATTE	\$200,000	\$200,000	\$0
RIO GRANDE	\$200,000	\$0	\$200,000
SOUTH PLATTE	\$200,000	\$50,750	\$149,250
SOUTHWEST	\$200,000	\$8,600	\$191,400
YAMPA/WHITE /GREEN	\$4,039,395	\$172,750	\$27,250

TOTAL STIMULUS BASIN FUNDS

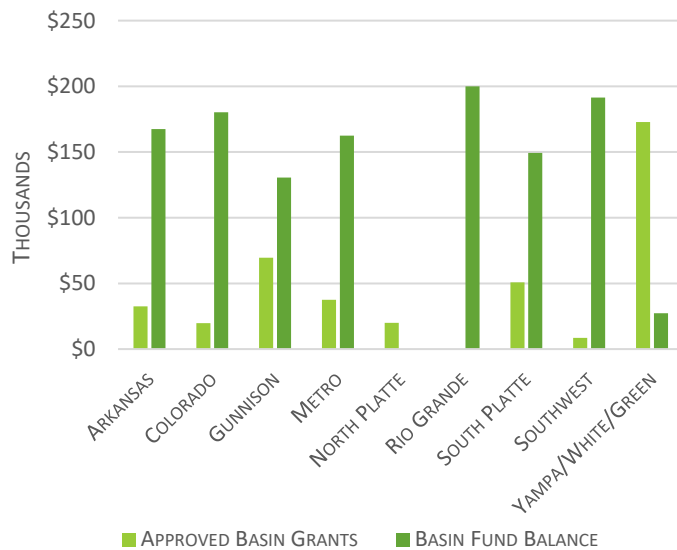


Figure 2: TOTAL, APPROVED, AND REMAINING STIMULUS FUNDS 2020-2021

TOTAL BASIN FUNDS

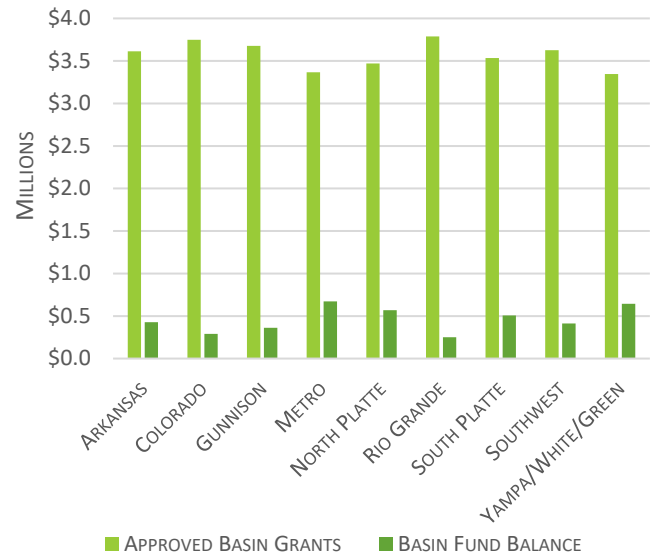


Figure 1: TOTAL, APPROVED, AND REMAINING H2B/H2O FUNDS 2006-2021

DISTRIBUTION OF WSRF FUNDING

The WSRF Criteria and Guidelines split the funds into Basin Accounts and a Statewide Account. Each Basin Account has received \$4,039,395 to date. During the 2021 Colorado Legislative session, the Governor signed House Bill 21-1260 which appropriated \$5 million of “stimulus” funding into the WSRF fund. Combined with stimulus funding, a total of \$32,170,078 in basin funding has been awarded as shown in Tables 1 and 2 (page 1), and Figures 1 and 2 (page 2).

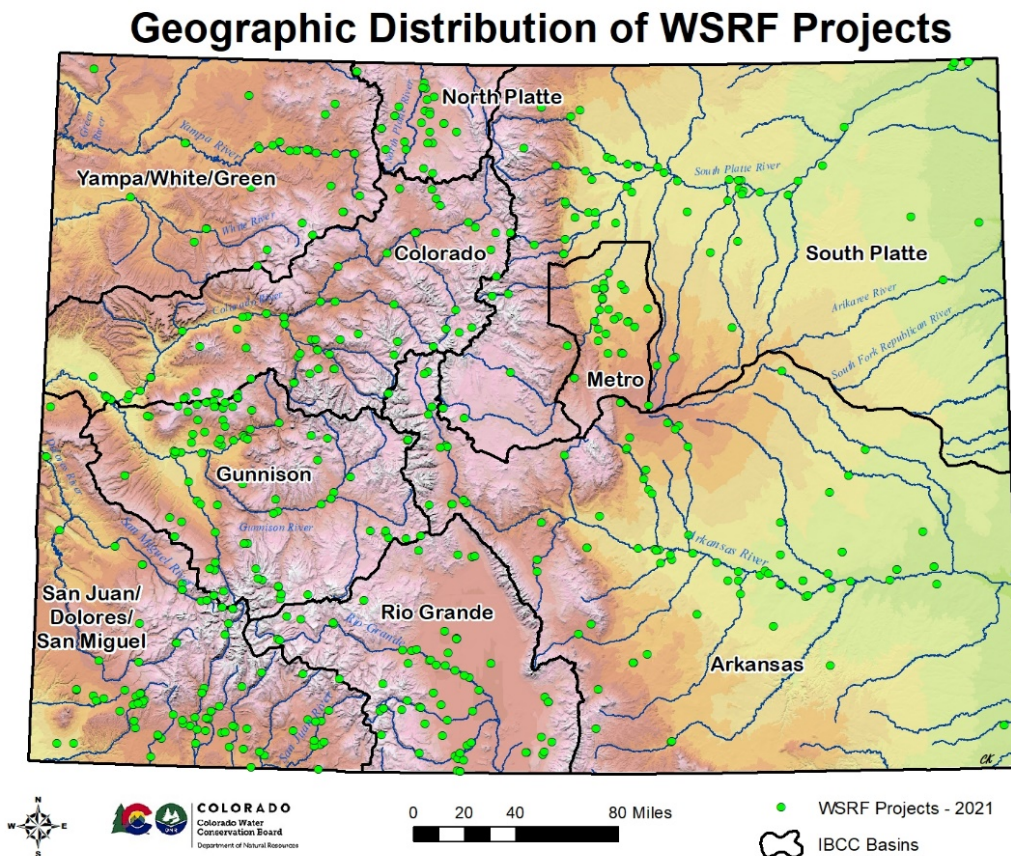
To date, the Statewide Account has received \$71,512,216 (including interest), and basin roundtables and the CWCB board have approved \$65,958,454 in grants. The distribution of WSRF funds from the Statewide Account per basin is shown in the table below.

TABLE 3: STATEWIDE FUND DISTRIBUTION APPROVED BY BASIN

BASIN	ARKANSAS	COLORADO	GUNNISON	METRO	NORTH PLATTE	RIO GRANDE	SOUTH PLATTE	SOUTHWEST	YAMPA/WHITE/GREEN	TOTAL
AMOUNT APPROVED FROM STATEWIDE ACCOUNT	\$12,737,703	\$6,611,075	\$6,870,607	\$7,723,032	\$842,844	\$13,104,635	\$8,075,127	\$8,929,463	\$1,063,969	\$65,958,454
NUMBER OF PROJECTS	86	31	53	42	10	41	60	40	14	377
PERCENT APPROVED FROM STATEWIDE ACCOUNT	19%	10%	11%	12%	1%	20%	12%	13%	2%	100%

GEOGRAPHIC DISTRIBUTION OF WSRF PROJECTS

FIGURE 3: GEOGRAPHIC DISTRIBUTION OF WSRF PROJECTS THROUGH OCTOBER 2021



PROJECT STATUS SUMMARY

Of the 749 projects WSRF has funded from 2006 - 2021, 81% (606) have been completed. Another 16% (123) are in progress and 3% (20) are in the contracting process. Taken together, there are 143 active grants (in progress and contracting), involving approximately \$15.5 million. Per the WSRF Criteria and Guidelines, applications for the Basin Account are considered at each of the CWCB's bi-monthly board meetings following their approval from the appropriate basin roundtable and once supporting documentation has been provided in a letter from the roundtable's chair. Applications to the Statewide Account are considered twice a year, at the September and March CWCB board meetings.

PROJECT IMPLEMENTATION SUMMARY

As recognized in the Colorado Water Plan, projects and implementation can cover a broad spectrum of activities. Some implementation efforts focus on information gathering, planning, technical studies, or programmatic work, amounting to roughly 30% (\$29,137,795) of efforts, whereas other efforts include infrastructure or other physical outcomes 70% (\$68,990,737).

DISTRIBUTION AND FUNDING BY PROJECT TYPE

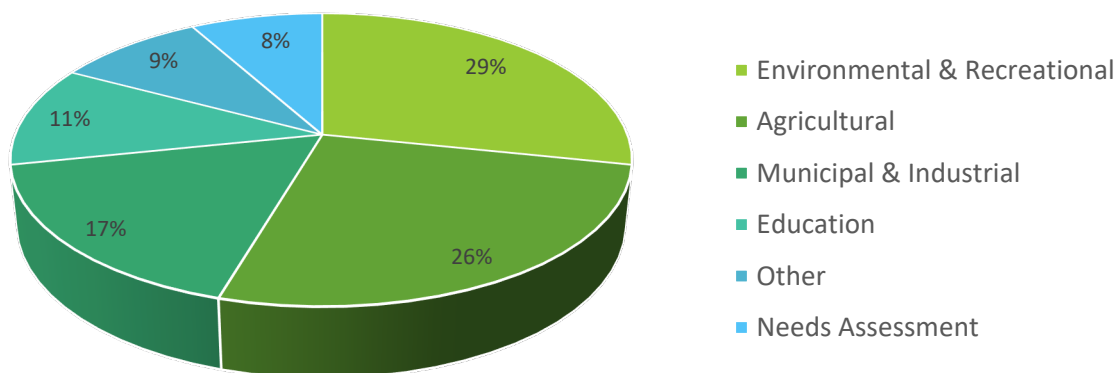
WSRF funded projects have addressed both consumptive (agricultural and municipal) and nonconsumptive (environmental and recreational) needs with most of the projects addressing multiple needs. Table 4 shows the distribution of WSRF funding by primary category.

TABLE 4: DISTRIBUTION AND FUNDING BY PROJECT TYPE

Type	Needs Assessment	Municipal & Industrial	Agricultural	Environmental & Recreational	Education	Other
Arkansas	\$2,515,349	\$4,221,125	\$4,114,386	\$8,932,908	\$1,209,832	\$5,149,765
Colorado	\$1,243,512	\$1,455,408	\$4,016,872	\$7,633,016	\$729,746	\$1,280,954
Gunnison	\$572,186	\$3,326,712	\$5,749,823	\$4,300,513	\$413,518	\$970,242
Metro	\$1,550,084	\$6,685,865	\$585,350	\$2,544,144	\$448,014	\$753,843
North Platte	\$211,986	\$995,000	\$2,717,449	\$3,101,433	\$490,357	\$860,423
Rio Grande	\$783,123	\$158,000	\$11,507,288	\$12,002,198	\$1,017,965	\$1,063,487
South Platte	\$1,611,783	\$1,022,038	\$4,161,356	\$4,872,656	\$869,887	\$3,326,227
Southwest	\$510,743	\$5,530,411	\$4,375,884	\$2,277,627	\$684,386	\$887,336
Yampa/White/Green	\$1,045,143	\$1,430,990	\$1,888,366	\$2,120,401	\$1,059,695	\$826,268
Total Funding	\$10,043,909	\$24,825,549	\$39,116,773	\$47,794,896	\$6,923,400	\$15,118,545
NUMBER OF FUNDED IMPLEMENTATION EFFORTS (PROJECTS, STUDIES, ETC.)						
Arkansas	13	35	36	49	14	33
Colorado	14	26	39	48	19	13
Gunnison	8	30	52	48	10	15
Metro	16	29	10	23	16	8
North Platte	2	3	27	19	4	5
Rio Grande	6	4	47	50	10	9
South Platte	20	22	33	36	23	9
Southwest	10	32	48	33	23	11
Yampa/White/Green	11	19	22	27	14	6
Total Number of Grants¹	100	200	314	333	133	109

FIGURE 4: TOTAL WSRF FUNDING BY CATEGORY 2006-2021

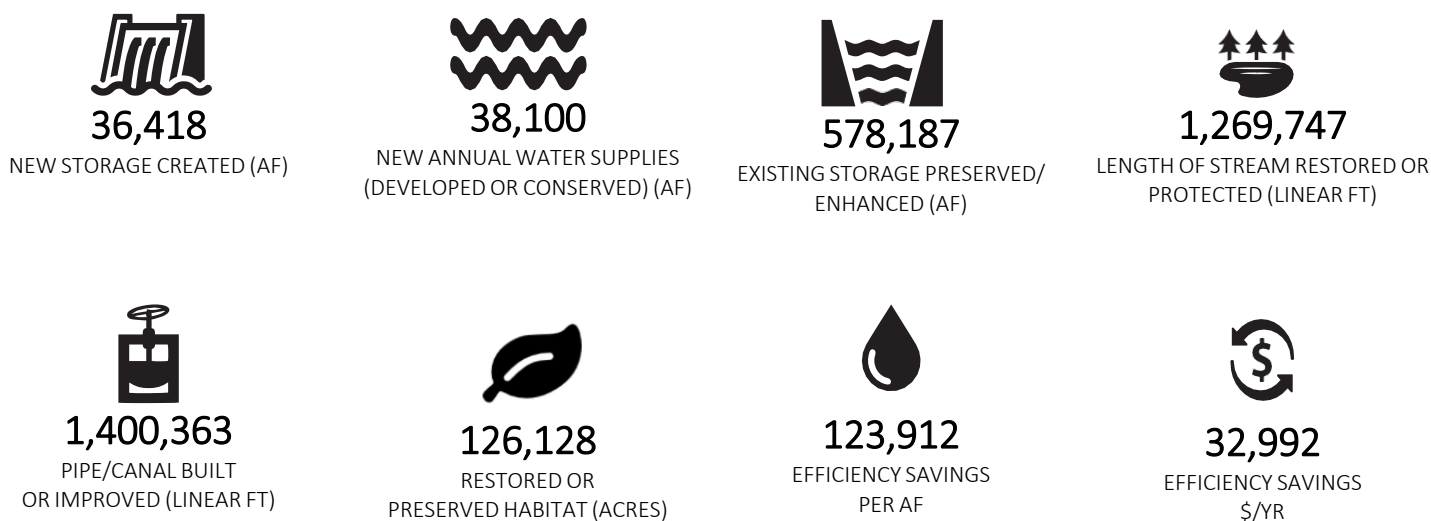
TOTAL WSRF FUNDING BY CATEGORY 2006-2021



¹ Grants can be designated into more than one project type. The total number of grants across all categories does not reflect the actual total number of grants.

WSRF IMPACT BY THE NUMBERS

FIGURE 5: CUMULATIVE WSRF GRANT IMPACT 2006-2021:



FUNDING SUMMARY

The WSRF Program has been very effective in its purpose. The Fund has provided grants for a mix of consumptive and nonconsumptive water projects and promoted multi-purpose projects throughout Colorado. The project's WSRF funds help the state meet its water supply needs with money that was not available until the passage of the legislation.

Table 5 below displays the legislative appropriations and actual funds received by the Water Supply Reserve Fund Program since its inception in 2006. In 2009, the Water Supply Reserve Fund Program was reauthorized in perpetuity by SB 09-106. SB 09-106 appropriates \$10,000,000 per year from the Severance Tax Trust Fund, subject to available funding. Due to the lack of revenue from Severance Tax, the WSRF has received reduced funding in some years. In 2021, the Colorado Legislature approved and the Governor signed Senate Bill 21-160 adding \$5 million to the WSRF program from the General Fund.

Table 5 also shows the breakdown of funds between the Basin and Statewide Accounts as directed by the Criteria and Guidelines. The Basin Account funds are then distributed evenly among the nine basin roundtables.

TABLE 5: WSRF FUND APPROPRIATION AND RECEIPTS 2006-OCTOBER 2021

WSRF FUND APPROPRIATION AND RECEIPTS

Fiscal Year	Legislative Appropriation	Funds Received	Statewide Account	Basin Account
2006/2007	\$10,000,000	\$10,000,000	\$5,500,000	\$4,500,000
2007/2008	\$6,000,000	\$6,000,000	\$4,200,000	\$1,800,000
2008/2009	\$10,000,000	\$7,000,000	\$4,300,000	\$2,700,000
2009/2010	\$5,775,000	\$5,775,000	\$4,215,750	\$1,559,250
2010/2011	\$6,000,000	\$6,000,000	\$4,380,000	\$1,620,000
2011/2012	\$7,000,000	\$7,000,000	\$4,732,000	\$2,268,000
2012/2013	\$10,000,000	\$7,157,724	\$4,580,943	\$2,576,781
2013/2014	\$10,000,000	\$10,091,639	\$6,458,649	\$3,632,990
2014/2015	\$10,000,000	\$10,000,000	\$6,400,000	\$3,600,000
2015/2016	\$10,000,000	\$9,103,590	\$5,826,298	\$3,277,292
2016/2017 (FY2017)	\$0	\$0	\$0	\$0
2017/2018 (FY2018)	\$10,000,000	\$1,455,776	\$931,697	\$524,079
2017/2018 CF* (FY2018)	\$0	\$7,000,000	\$4,480,000	\$2,520,000
2018/2019 CF (FY2019)	\$0	\$3,544,884	\$2,268,726	\$1,276,158
2019/2020 (FY2020)	\$10,000,000	\$10,000,000	\$6,400,000	\$3,600,000
2020/2021 (FY2021)	\$2,500,000	\$2,500,000	\$1,600,000	\$900,000
Interest	N/A	\$2,500,000	\$1,600,000	\$900,000
(Prior Years Interest Adjustment 2007-2014 and FY2015, FY2016, FY2017)				
FY 2018 Interest	N/A	\$ 376,467	\$376,467	\$0
FY 2019 Interest	N/A	\$ 431,589	\$431,589	\$0
FY 2020 Interest	N/A	\$ 558,732	\$558,732	\$0
FY 2021 Interest	N/A	\$ 62,058	\$62,058	\$0
TOTAL	\$107,275,000	\$107,183,157	\$71,512,216	\$36,354,551

*CF=Construction Fund

APPROVED APPLICATION LINKS BY BASIN

The following links show WSRF applications approved by the CWCB board by basin:

- [Arkansas Basin](#)
- [Colorado Basin](#)
- [Gunnison Basin](#)
- [Metro Basin](#)
- [North Platte Basin](#)
- [Rio Grande Basin](#)
- [South Platte Basin](#)
- [Southwest Basin](#)
- [Yampa/White/Green Basin](#)

To learn more please email waterplan.info@state.co.us, call 303-866-3441 or visit the Colorado Water Conservation Board website at, <https://cwcb.colorado.gov>.



COLORADO

**Colorado Water
Conservation Board**

Department of Natural Resources