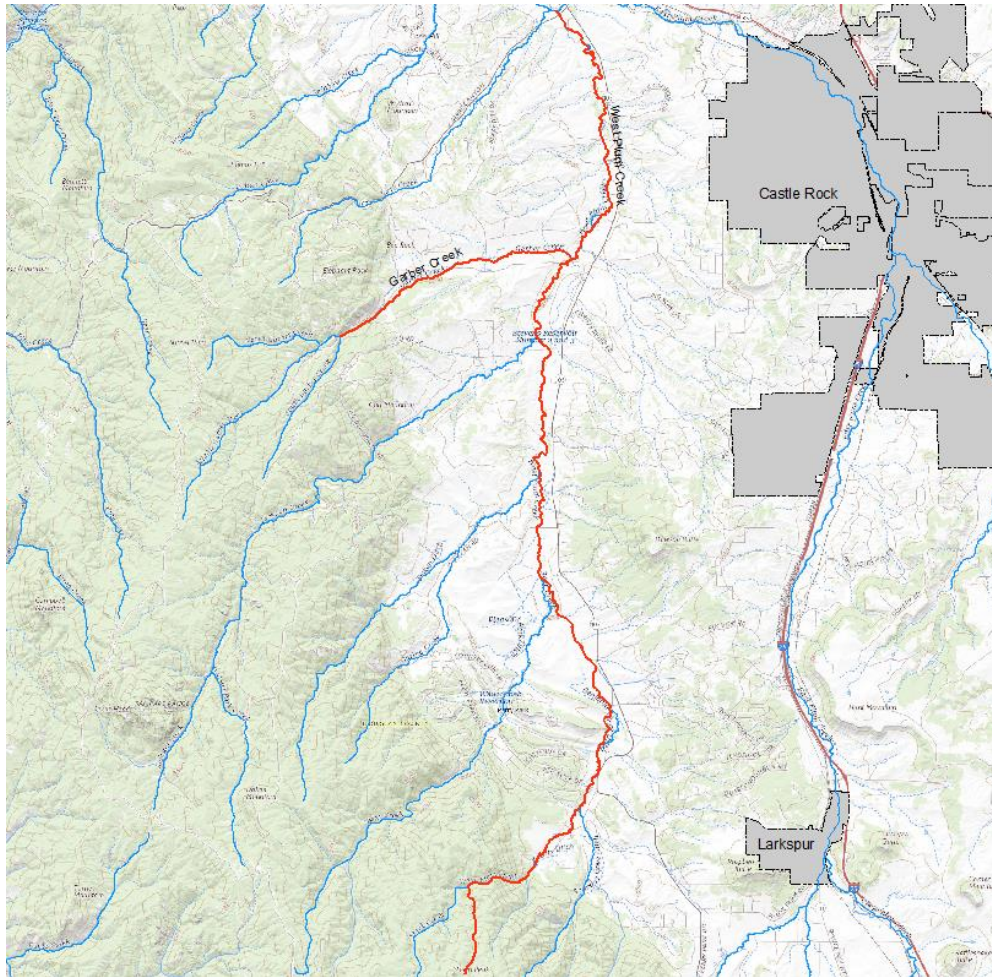


West Plum Creek ISF Recommendation Fact Sheet



UPPER TERMINUS: headwaters in the vicinity
UTM North: 4338423.91 UTM East: 500217.92

LOWER TERMINUS: confl East Plum Creek
UTM North: 4364543.80 UTM East: 502659.69

WATER DIVISION: 1

WATER DISTRICT: 8

COUNTY: Douglas

WATERSHED: Upper South Platte

CWCB ID: 21/1/A-004

RECOMMENDER: Colorado Parks and Wildlife (CPW)

LENGTH: 22.58 miles

FLOW RECOMMENDATION: TBD

NATURAL ENVIRONMENT: Common shiner, northern redbelly dace