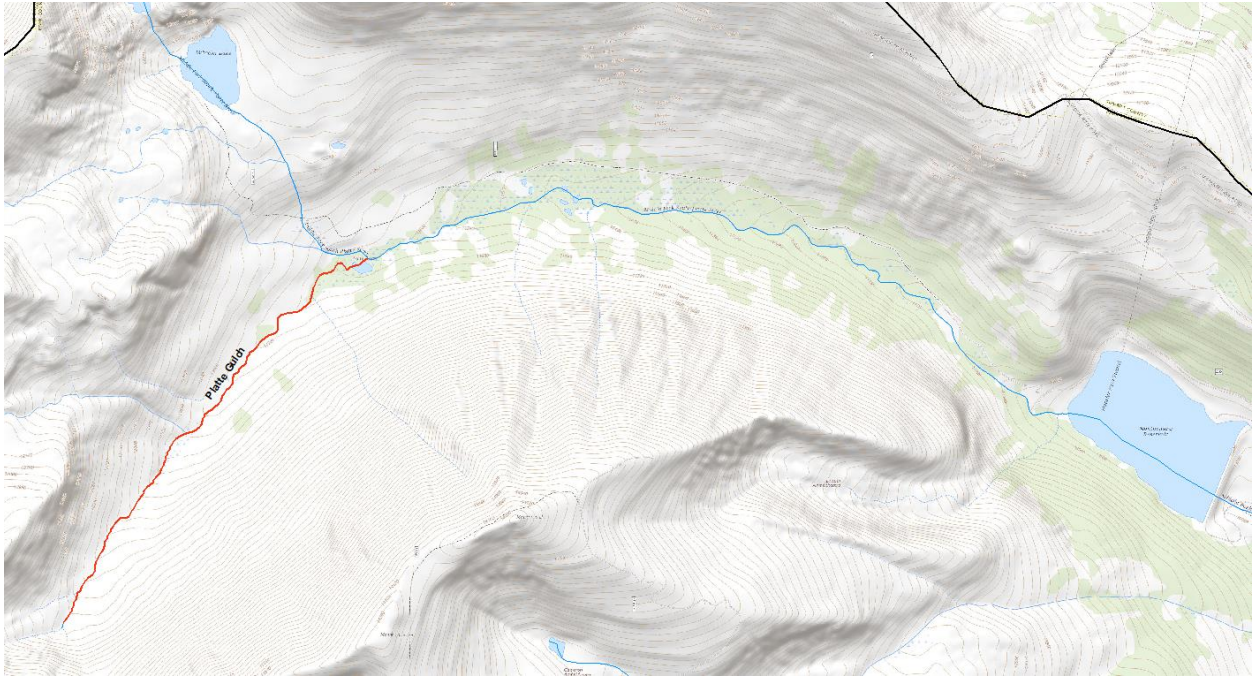


Platte Gulch ISF Recommendation Fact Sheet



UPPER TERMINUS: headwaters in the vicinity
UTM North: 4355877.30 UTM East: 402063.58
LOWER TERMINUS: confl MF South Platte River
UTM North: 4357626.04 UTM East: 403523.67

WATER DIVISION: 1
WATER DISTRICT: 23
COUNTY: Park

WATERSHED: South Platte Headwaters
CWCB ID: 16/1/A-006

RECOMMENDER: Colorado Parks and Wildlife, Park County (CPW, Park County)

LENGTH: 1.54151839370475 miles

FLOW RECOMMENDATION: TBD