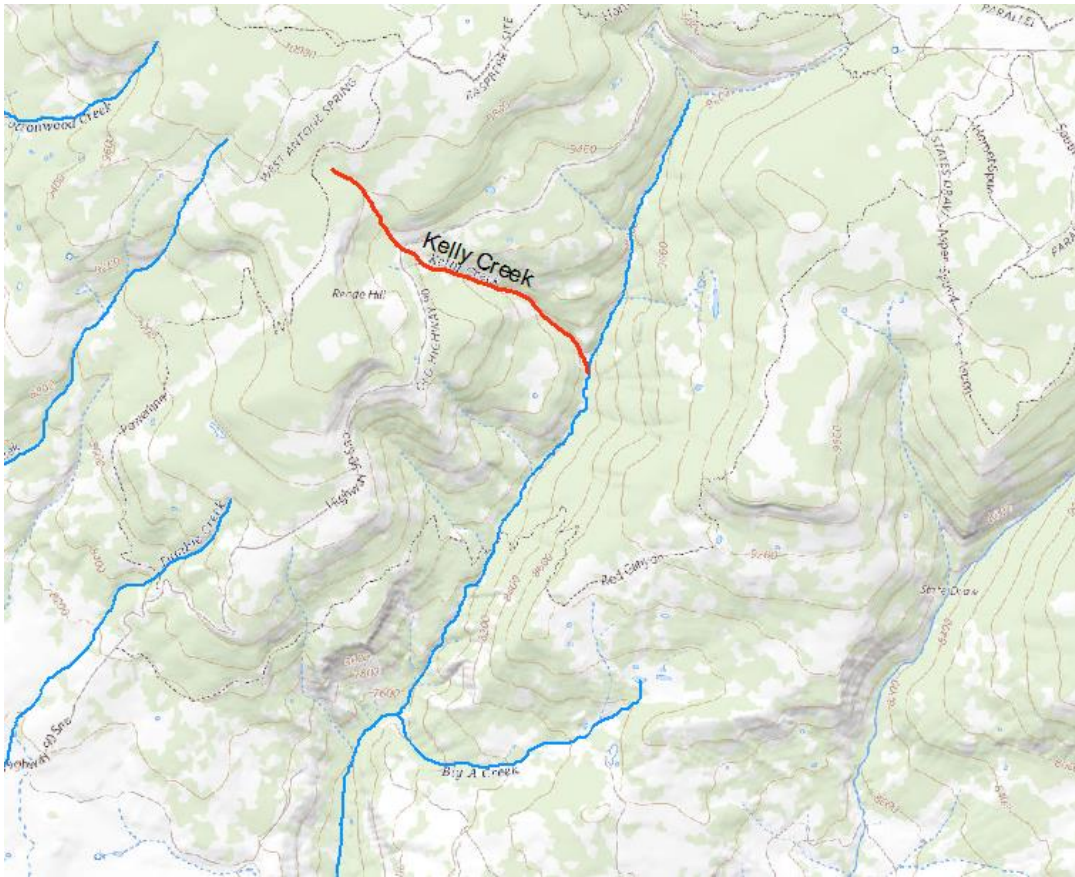


Kelly Creek ISF Recommendation Fact Sheet



UPPER TERMINUS: headwaters in the vicinity
UTM North: 4244823.74 UTM East: 219127.69

LOWER TERMINUS: confl Red Canyon Creek
UTM North: 4243319.90 UTM East: 221016.68

WATER DIVISION: 4

WATER DISTRICT: 60

COUNTY: Montrose

WATERSHED: San Miguel

CWCB ID: 21/4/A-009

RECOMMENDER: Colorado Parks and Wildlife (CPW)

LENGTH: 1.59 miles

FLOW RECOMMENDATION: TBD

NATURAL ENVIRONMENT Colorado River cutthroat trout