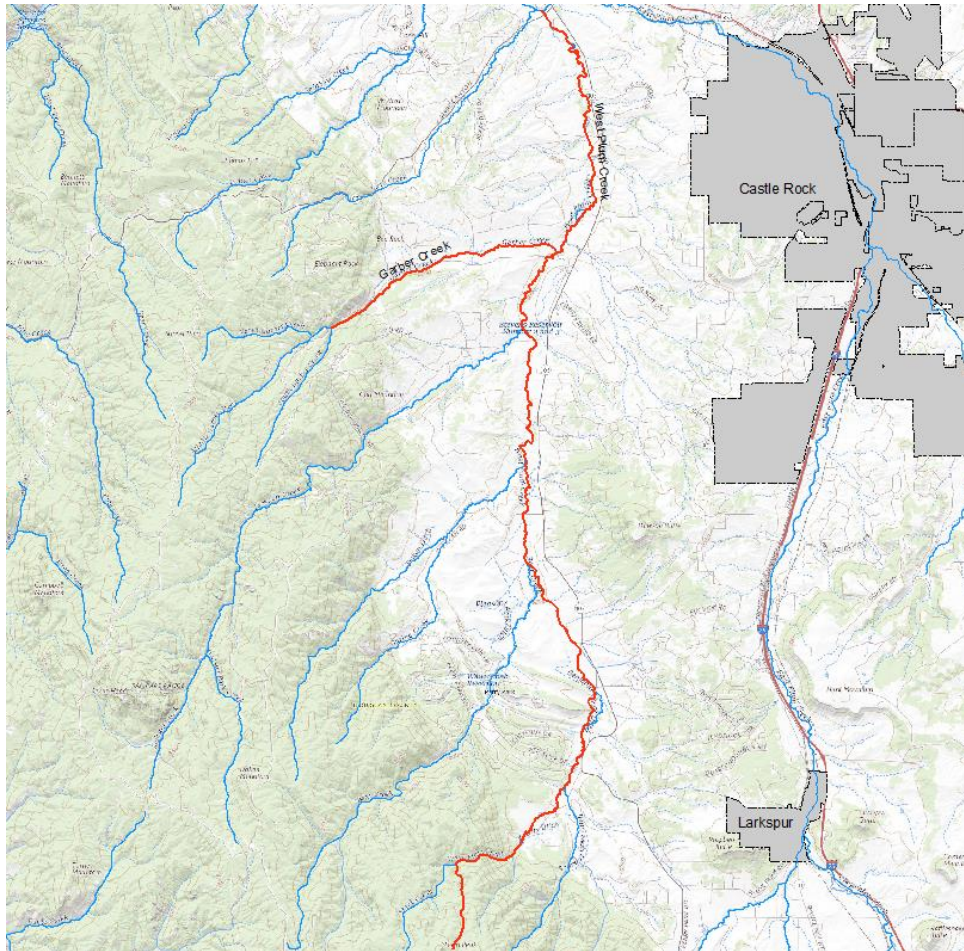


# Garber Creek ISF Recommendation Fact Sheet

---



UPPER TERMINUS: confl North and South Garber Creeks  
UTM North: 4355705.62 UTM East: 496807.46  
LOWER TERMINUS: confl West Plum Creek  
UTM North: 4357804.61 UTM East: 503132.54

WATER DIVISION: 1

WATER DISTRICT: 8

COUNTY: Douglas

WATERSHED: Upper South Platte

CWCB ID: 21/1/A-002

RECOMMENDER: Colorado Parks and Wildlife (CPW)

LENGTH: 4.75 miles

FLOW RECOMMENDATION: TBD

NATURAL ENVIRONMENT: Common shiner, northern redbelly dace