

# 2021 Instream Flow Proposals



**HIGH COUNTRY  
CONSERVATION ADVOCATES**



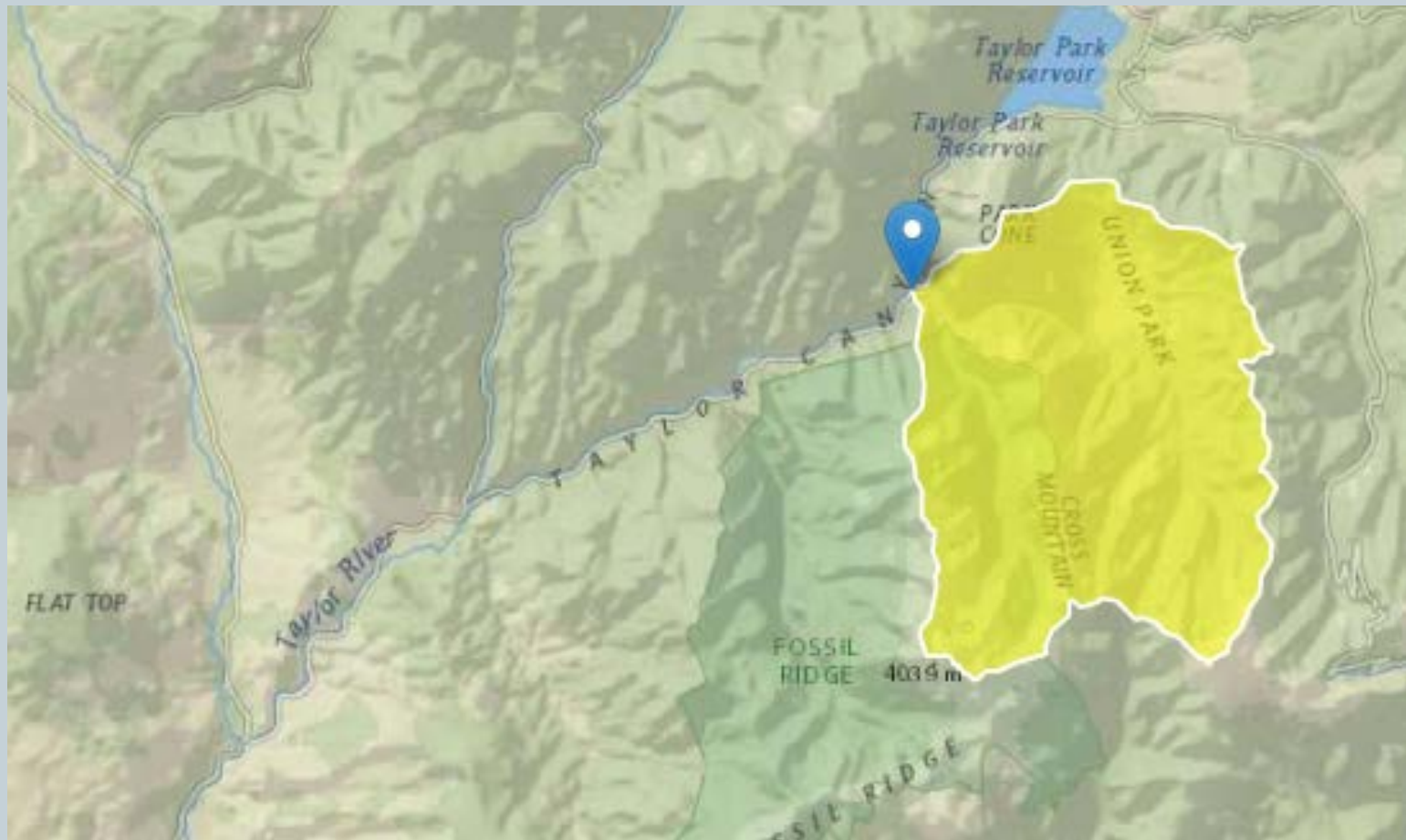


# **Water Division 4**

## **Lottis Creek**



# Lottis Creek Watershed







# Natural Environment

Recreational fishery with rainbow and brook trout

Healthy riparian area featuring beaver ponds





# Instream Flow Rights

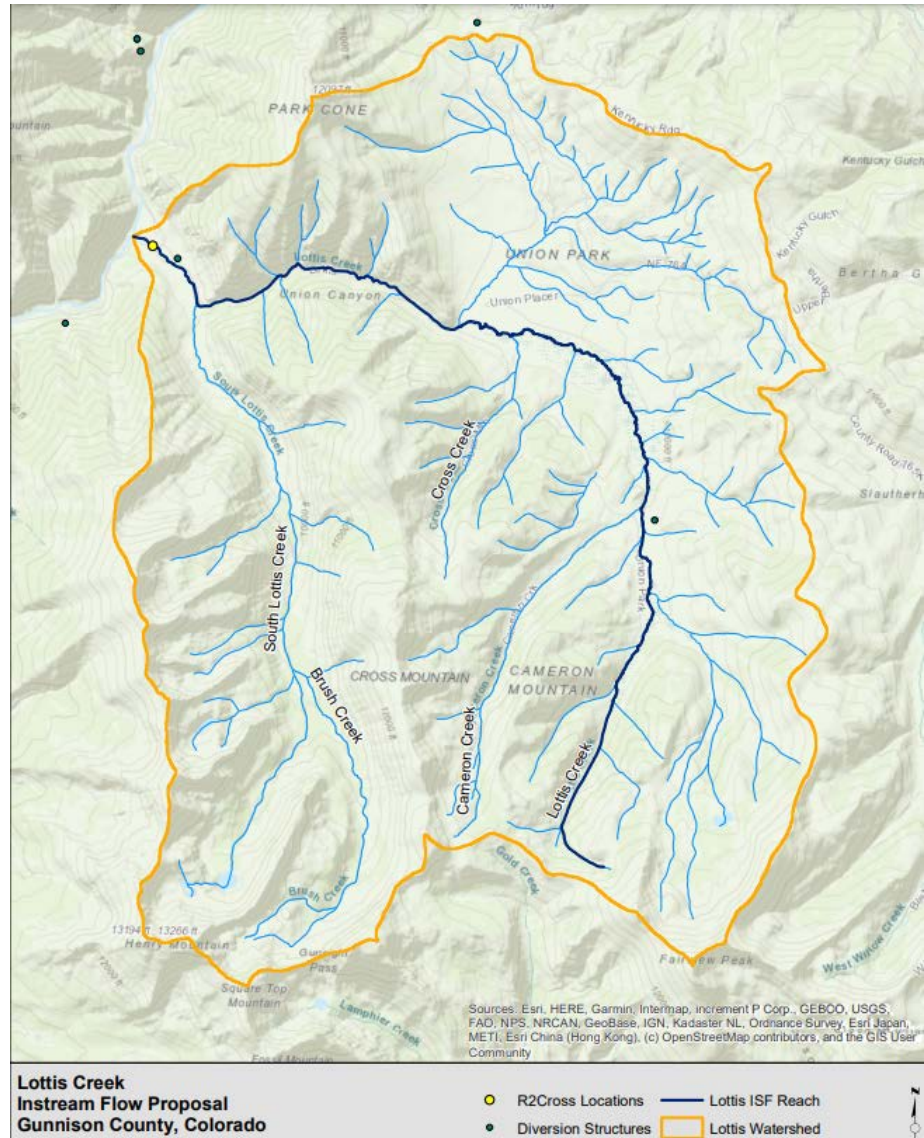


- Proposing an increased summer instream flow on Lottis Creek to reflect hydrologic variability and protect the natural environment
  - ✦ Existing ISF right on Lottis Creek (5 cfs)
    - Looking to add seasonal variability and apply current criteria for minimum flows



# Lottis Creek

Proposed ISF is 10.3 miles long from the headwaters of Lottis Creek to the confluence of Lottis Creek and the Taylor River





# Lottis Creek

## Proposed ISF rates

Summer (April 1 to October 31)

**8.5 cfs\***

Winter (Current rate November 1 to  
May 31)

**5 cfs**

HCCA will work with the Natural Stream and Lakes  
Protection unit to assess water availability.



# Water Availability



## Physical

- No gage data available
- Used StreamStats to determine physical availability

## Legal

- No active diversions (conditional rights and spring rights)
- Private ISF rights \*

\*Private flow rights are extensive but do not afford the same protections offered by ISF rights held by the CWCB. Rights held by the CWCB are monitored and enforced by CWCB staff and the State can join as a party to protect these rights from potential harm.





# Stakeholders

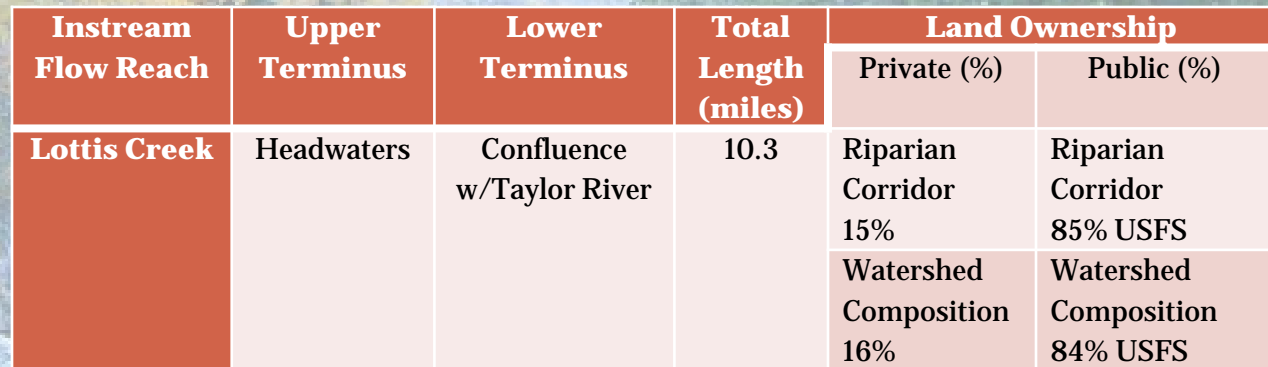
**US Forest  
Service**

**Colorado Parks &  
Wildlife**

**Gunnison County**

**Water rights  
owners**

**The Upper  
Gunnison River  
Water  
Conservancy  
District**



Instream Flow Reach	Upper Terminus	Lower Terminus	Total Length (miles)	Land Ownership	
				Private (%)	Public (%)
Lottis Creek	Headwaters	Confluence w/Taylor River	10.3	Riparian Corridor 15%	Riparian Corridor 85% USFS
				Watershed Composition 16%	Watershed Composition 84% USFS

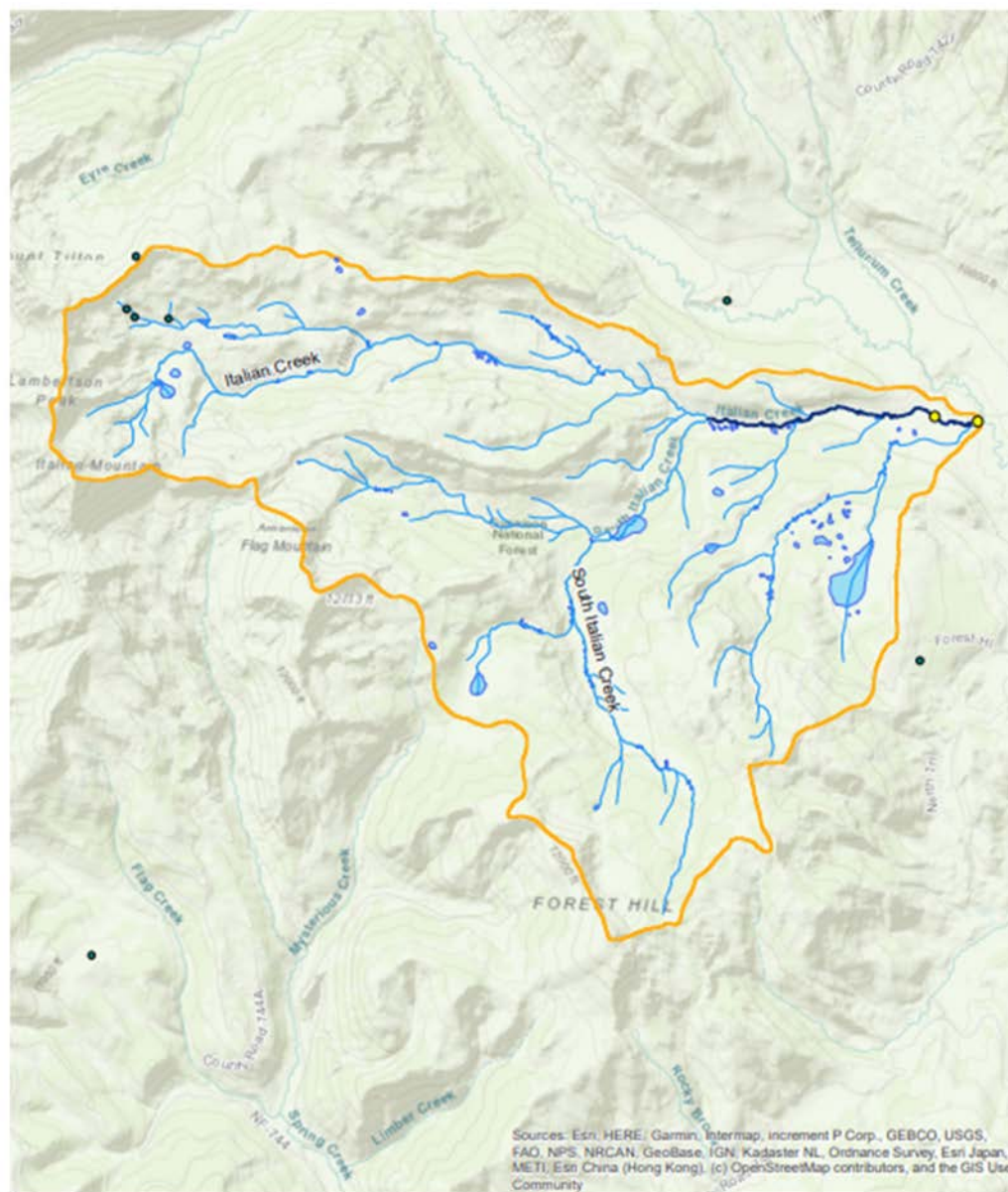


# **Water Division 4**

## **Italian Creek**







**Italian Creek**  
**Stream Flow Proposal**  
**Gunnison County, Colorado**

- R2Cross Locations
- Diversion Structures
- Italian Creek ISF Reach
- Italian Creek Watershed

# Instream Flow Rights



- Proposing an increased summer instream flow on lower Italian Creek to reflect hydrologic variability and protect the natural environment
  - ✦ Existing ISF right on Italian Creek (2.5 cfs)



# Italian Creek

Proposed ISF is 2.42 miles long from the confluence of Italian Creek and South Italian Creek to the confluence of Italian Creek and the Taylor River





# Italian Creek

## Proposed ISF rates

Summer (April 1 to October 31)

**3.2 cfs\***

Winter (Current rate November 1 to  
May 31)

**2.5 cfs**  
**(no change)**

HCCA will work with the Natural Stream and Lakes  
Protection unit to assess water availability.







## Natural Environment

Colorado  
Cutthroat trout  
fishery

Healthy riparian  
area featuring  
beaver ponds,  
willows, and  
high alpine  
tundra

# Italian Creek





# Water Availability



## Physical

- No gage data available
- Used StreamStats to determine physical availability

## Legal

- No active diversions (conditional rights and spring rights)



# Stakeholders

USFS  
Upper Gunnison River  
Water Conservancy  
District  
  
Colorado Parks and  
Wildlife  
  
Gunnison County

Instream Flow Reach	Upper Terminus	Lower Terminus	Total Length (miles)	Land Ownership	
				Private (%)	Public (%)
Italian Creek	Confluence with South Italian and Italian Creek	Confluence w/Taylor River	2.42	Riparian Corridor 0%	Riparian Corridor 100% USFS
				Watershed Composition 1%	Watershed Composition 99% USFS





Please feel free to contact Julie Nania at [Julie@hccacb.org](mailto:Julie@hccacb.org) with any questions.