

CPW's Upcoming Instream Flow Efforts

2021 Instream Flow Workshop

Katie Birch
Instream Flow Program Specialist
Colorado Parks and Wildlife

West Plum Creek



LIVE LIFE
OUTSIDE

CPW's ISF Candidates

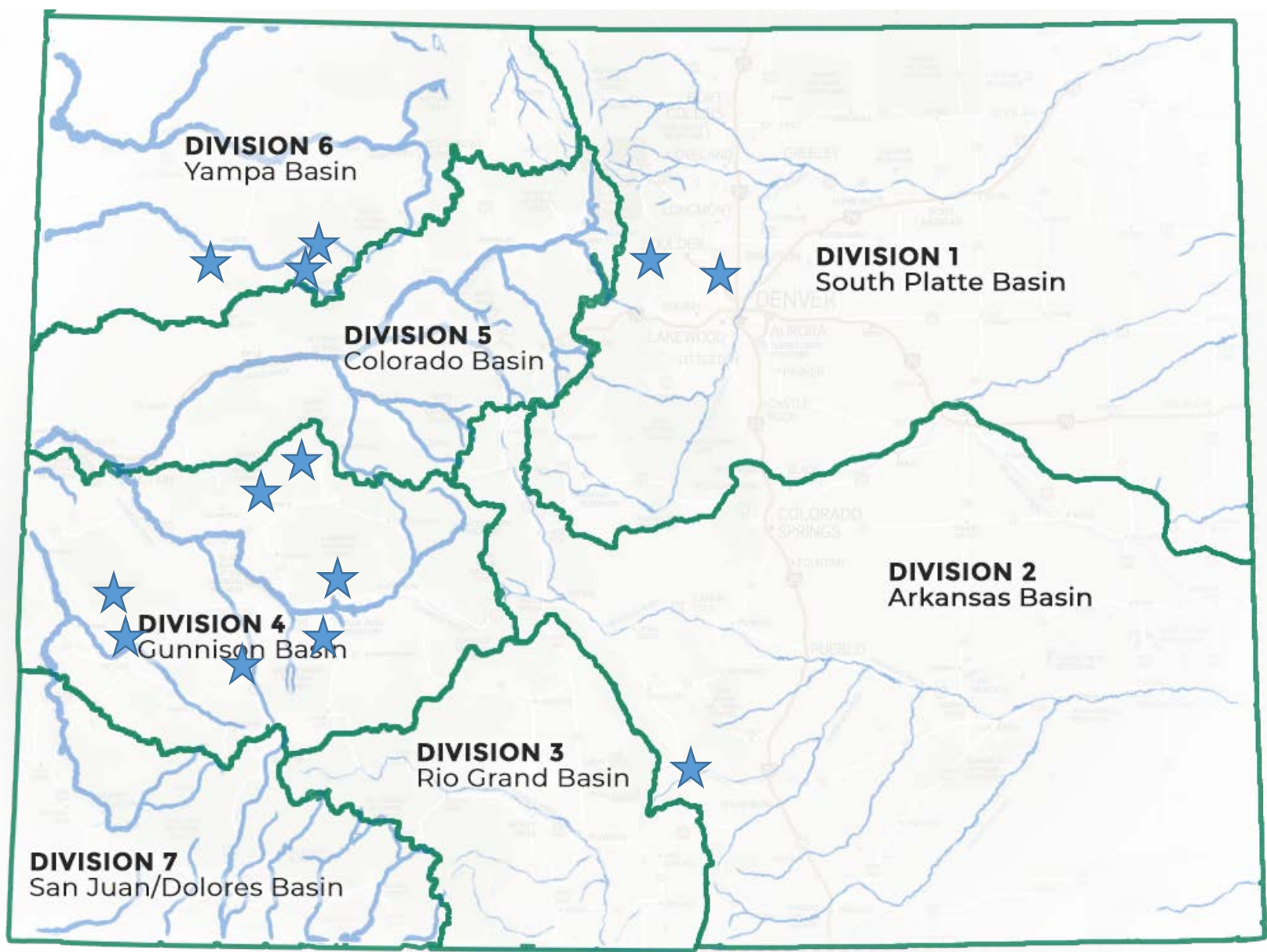
- ❖ Focus on high conservation and recreational value fish populations
- ❖ Leveraging local knowledge
- ❖ Continue to work with project partners (Larimer County, NPS, USFS)
- ❖ More transparency, advanced notice, vetting, and collaboration with water users.



Big Fish Creek



LIVE LIFE
OUTSIDE



LIVE LIFE
OUTSIDE

Continuation of Past Recommendations

6 - White River Basin

- ❖ Continuation of a past effort targeting native trout (and important recreational fishery in the North and South Fork White River)
- ❖ Linkage between flows and algae

Colorado River Cutthroat Trout



South Fork White River



LIVE LIFE
OUTSIDE

Recommendations in the Upper White River Basin

2022:

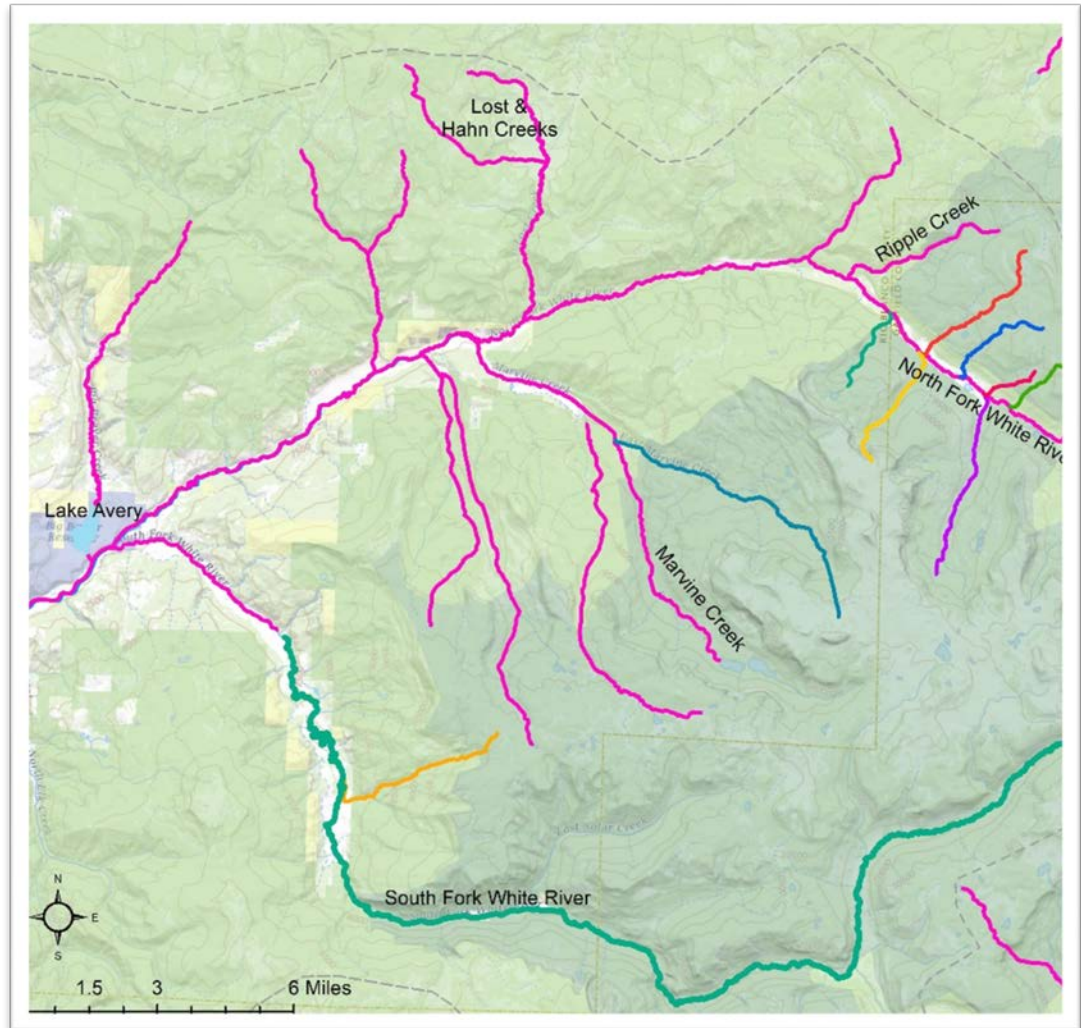
❖ North Fork White River tributaries (Postponed)

- ❖ Mirror Creek
- ❖ Bear Creek
- ❖ Picket Pin Creek
- ❖ Paradise Creek
- ❖ Hauskins Creek
- ❖ Lynx Creek
- ❖ Big Fish Creek

❖ East Marvine Creek (Postponed)

2022 and beyond:

- ❖ South Fork White River (and tributaries)
 - ❖ Hill Creek



Decreed ISF Reaches shown in Pink



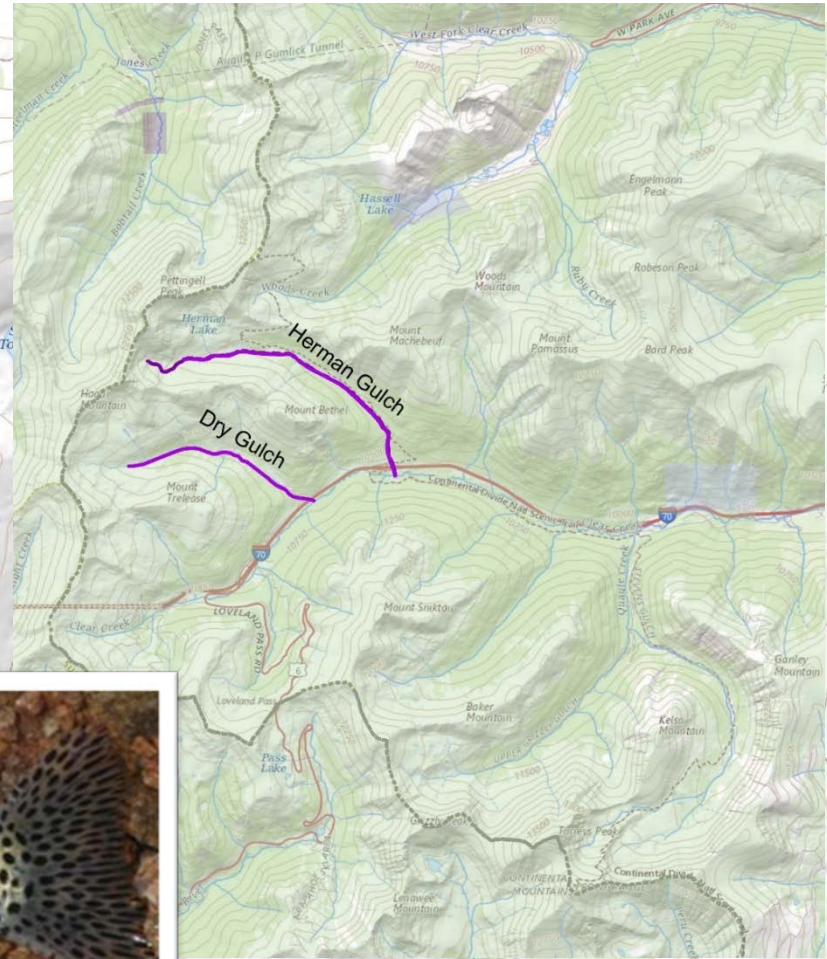
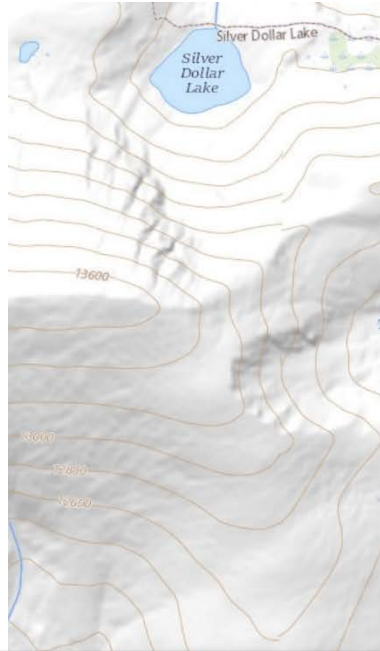
LIVE LIFE
OUTSIDE

Continuation of Past Efforts

1 - South Platte Basin

Unnamed tributary
to Duck Creek
(a.k.a. Square Tops
Creek)

Herman Gulch
(possible
enlargement)



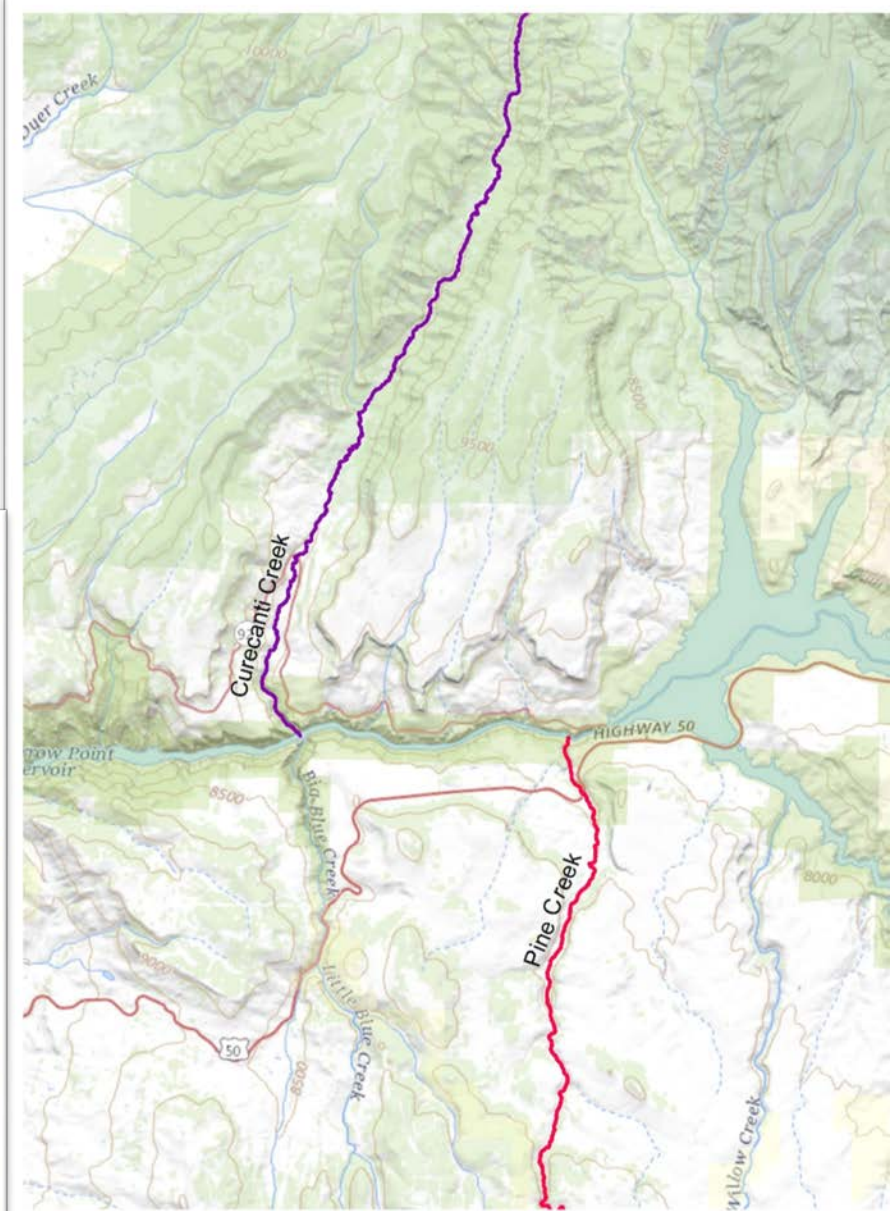
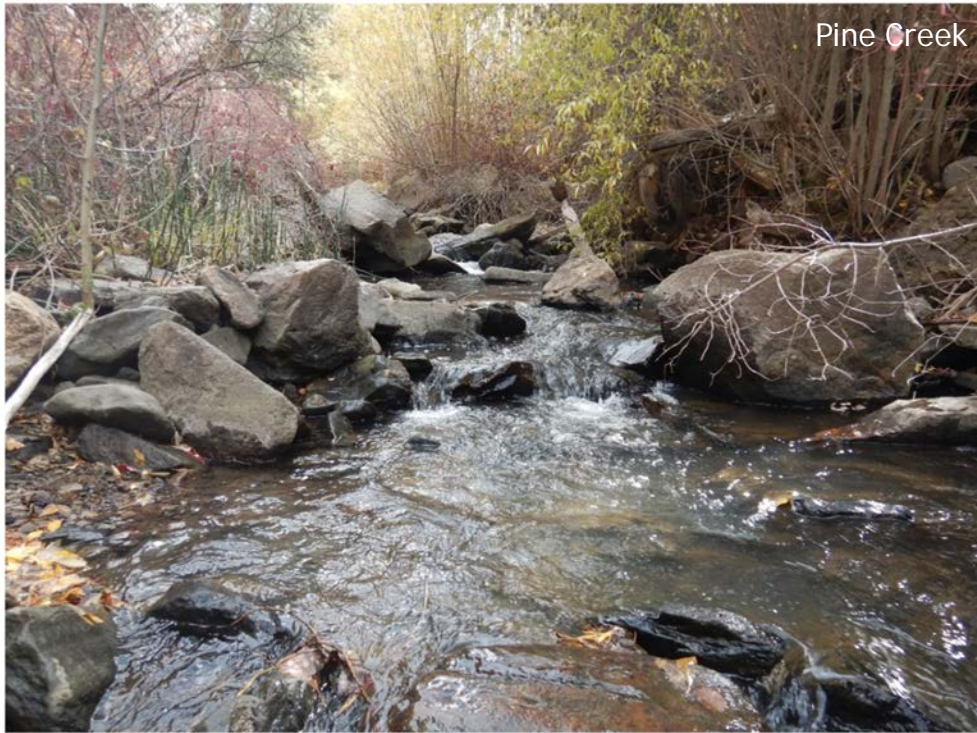
LIVE LIFE
OUTSIDE

Continuation of Past Efforts

4 - Gunnison Basin

In Partnership with Curecanti
NRA/NPS:

- Pine Creek (continue to refine)
- Curecanti Creek (potential enlargement)



Continuation of Past Efforts *and* New

4 - Gunnison Basin

Cow Creek near Billy Creek State Wildlife Area

Uncompahgre River below Ridgway Reservoir (Ridgway State Park)



LIVE LIFE
OUTSIDE

Continuation of Past Efforts - Cow Creek 2020 Updates

R2Cross Results

Date	Q measured	Winter Flow Recommendation	Summer Flow Recommendation
8/7/2019	90.7 cfs	Out of range	53 cfs
9/11/2019	3.5 cfs	7.4 cfs	Out of range
8/6/2020	5.7 cfs	8.1 cfs	Out of range
8/6/2020	6.0 cfs	5.5 cfs	Out of range
Biological Flow Recommendation:		7.2 cfs	52 cfs

*Preliminary Results Subject to Change in Final Recommendation to CWCB Board



LIVE LIFE
OUTSIDE

New Native Species Efforts

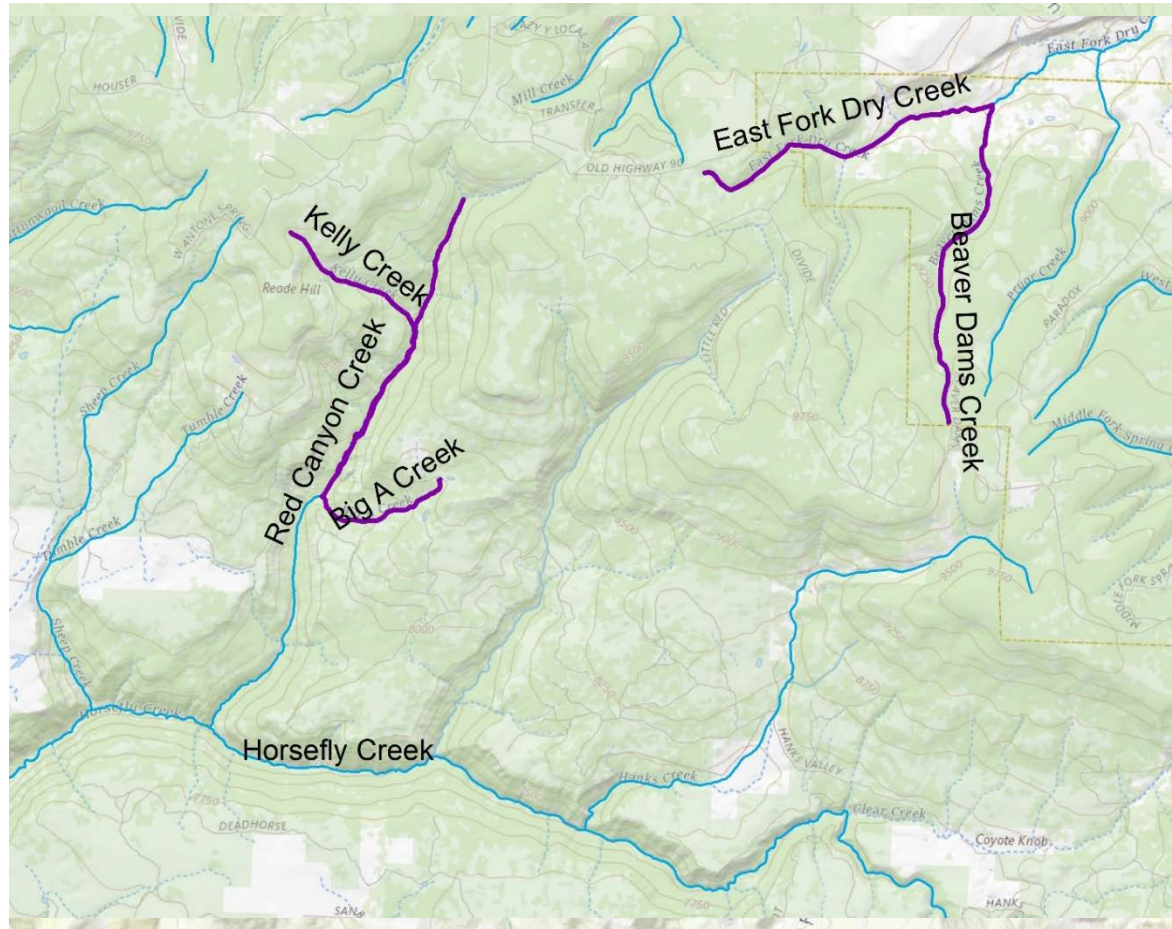
4 - Gunnison Basin

North Fork of the Gunnison

- West Hubbard, Middle Hubbard, and Main Hubbard Creeks
- Cunningham Creek (possible enlargement) & Sink Creek

Uncompahgre Plateau

- Beaver Ponds Creek & East Fork Dry Creek
- Red Canyon Creek, Kelly Creek, Big A Creek



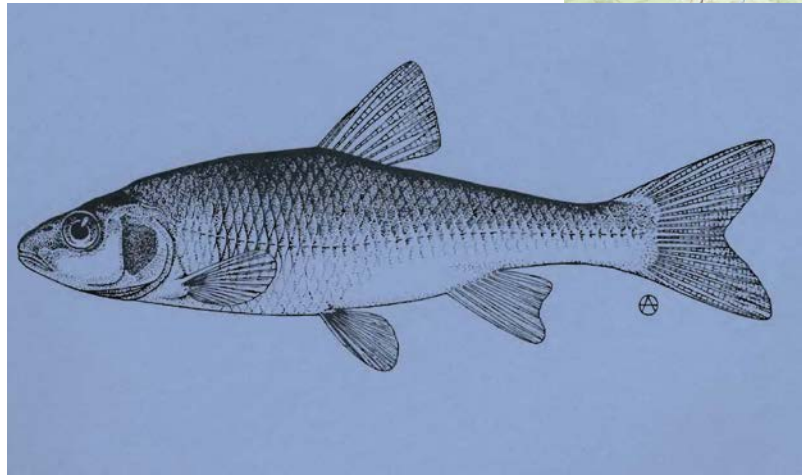
LIVE LIFE
OUTSIDE

New Native Species Efforts

1 - South Platte Basin

West Plum Creek (Multiple Segments) & Garber Creek

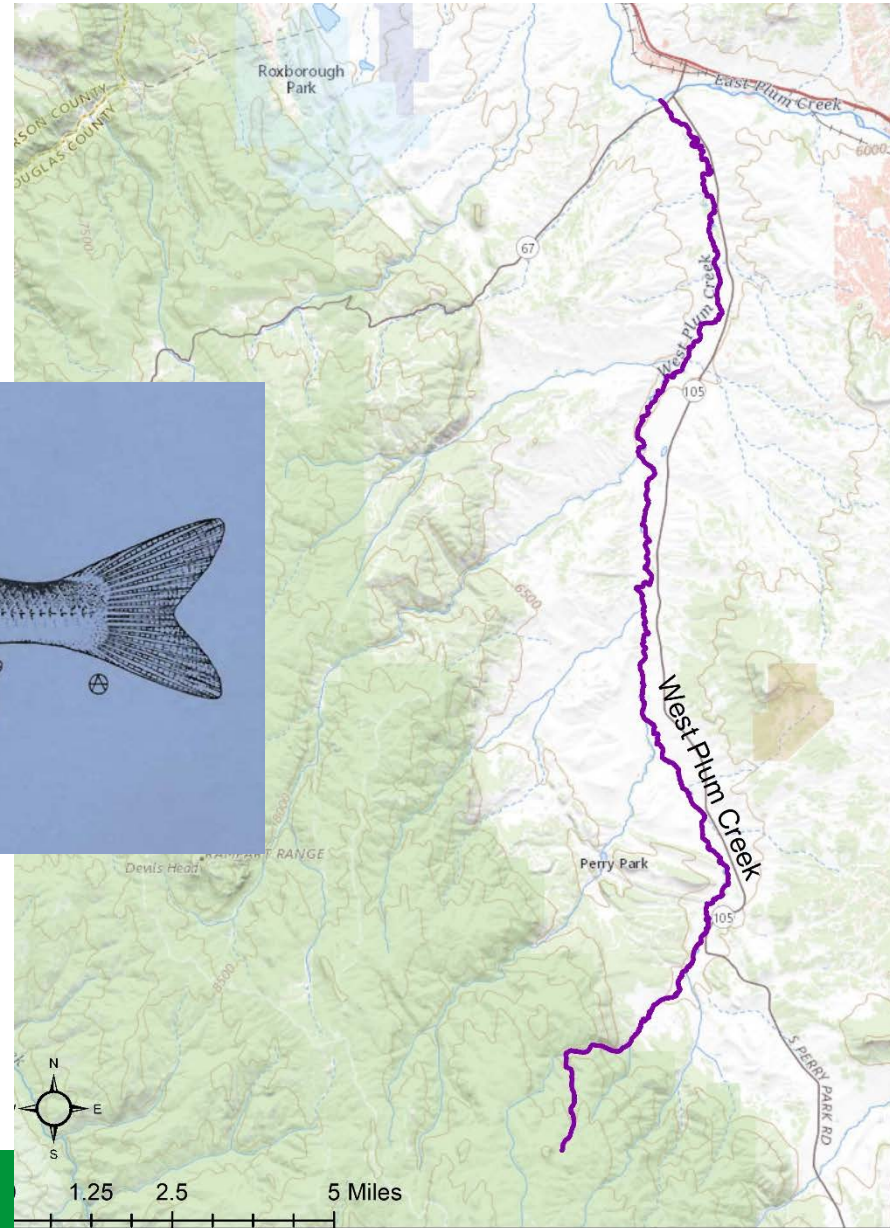
- Important transitional fishery



Northern Redbelly Dace

Common Shiner

Plus other native warm-water species



LIVE LIFE
OUTSIDE

New Native Species Efforts

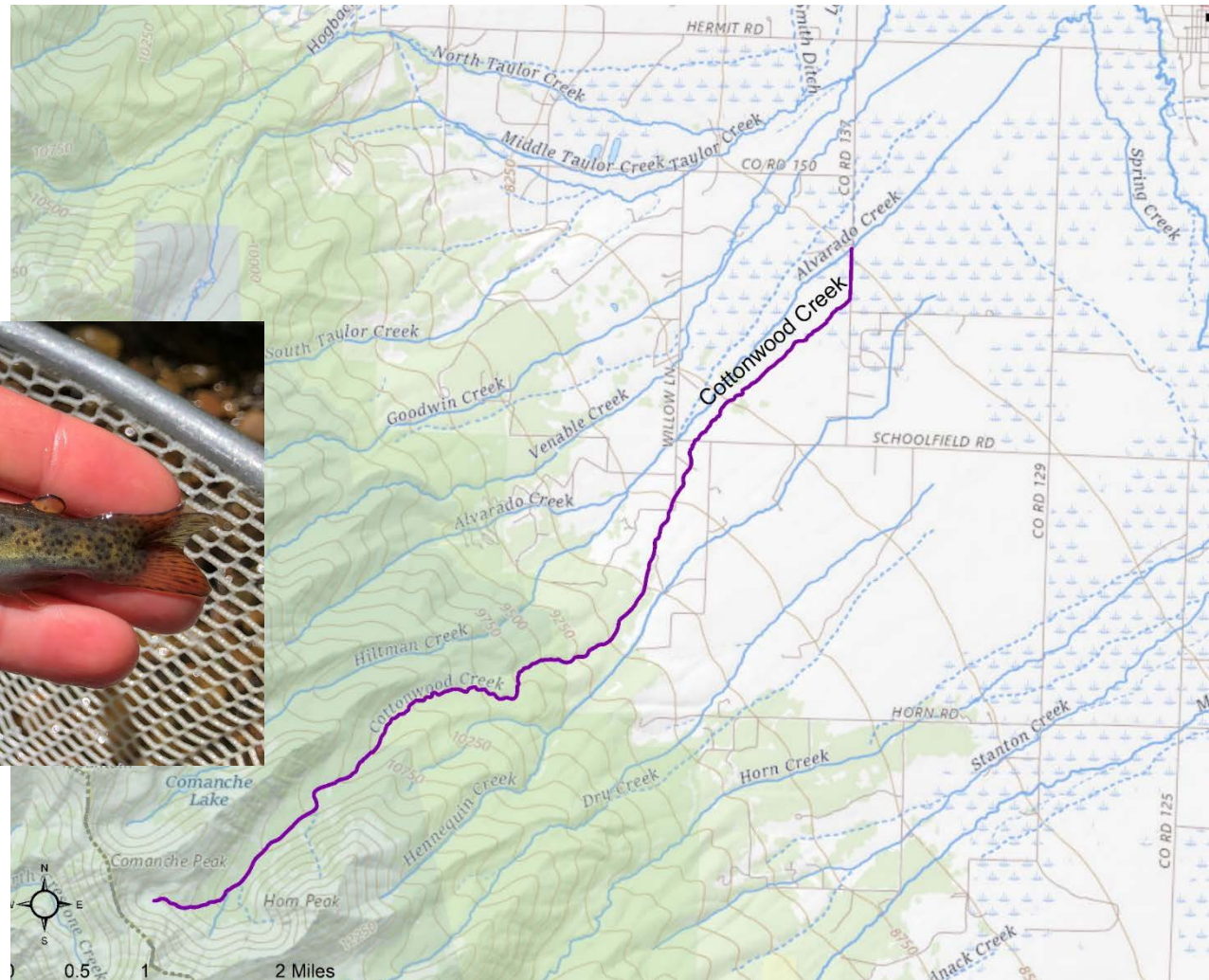
2 - Arkansas Basin

Cottonwood Creek

- Lower terminus near USFS Boundary



Hayden Creek Cutthroat Trout



LIVE LIFE
OUTSIDE



Questions/Concerns/Comments?

Katie Birch
CPW ISF Program Specialist
970-252-6021
Katie.birch@state.co.us