



COLORADO

Colorado Water Conservation Board *Department of Natural Resources*

DIRECTOR'S REPORT

July 2022

Interstate Compact Compliance • Watershed Protection • Flood Planning & Mitigation • Stream & Lake Protection
Water Project Loans & Grants • Water Modeling • Conservation & Drought Planning • Water Supply Planning



COLORADO

Colorado Water Conservation Board

Department of Natural Resources

TO: Colorado Water Conservation Board Members

FROM: Rebecca Mitchell
Anna Porter

DATE: July 20-21, 2022

SUBJECT: **Agenda Item 4b, July 2022 CWCB Board Meeting Director's Report**

TABLE OF CONTENTS

Pg. 3 - STATEWIDE

- CWCB Small Feasibility Grant Fund Update

Pg. 3 - COLORADO RIVER BASIN

- Colorado River Water Use

Pg. 4 - WATER CONSERVATION AND DROUGHT PLANNING UPDATES

- CWCB Water Efficiency Grant Fund Program (WEGF) Update
- Water Efficiency and Drought Plan Updates
- Drought Management Plans
- Water Efficiency Plans

Pg. 5 - WATER CONSERVATION AND DROUGHT PLANNING UPDATES

- Governor's Water Availability Task Force

Pg. 6 - WATERSHED AND FLOOD UPDATES

- Flood Threat Bulletin Holds a public Training Webinar
- CWCB Flood Section Earns National Award for the Second Year in a Row

Pg. 8 - WATERSHED AND FLOOD UPDATES

- Flood Section Sends Staff Member to Montana to Assist with Flood Recovery

Pg. 9 – WATERSHED AND FLOOD UPDATES

- Wildfire Ready Watersheds (SB21-240) – Mapping Update

Pg. 11 – WATERSHED AND FLOOD UPDATES

- Colorado Floodplain and Stormwater Criteria Manual
- The Letter of Map Revision (LOMR) Review Partners Program
- June 2022 Risk Mapping, Assessment and Planning (MAP) Project Updates by Major Water Basin

Pg. 19 - WATERSHED AND FLOOD UPDATES

- LiDAR Acquisition

Pg. 20 - WATER SUPPLY PLANNING SECTION UPDATES

- Water Supply Planning Section July 2022 Update
- Becky's Director's Calls Notes – WSP Bullets

Pg. 21 - WATER SUPPLY PLANNING SECTION UPDATES

- Water Supply Reserve Fund Grants

Pg. 22 - INSTREAM FLOW ATTACHMENTS

- Recently Decreed ISF Water Rights
- Instream Flow and Natural Lake Level Program - Summary of Resolved Legal Protection Cases

Pg. 31 - LOAN PROGRAM ATTACHMENTS

01 - Water Project Loan Program Interest Rates

02 - Prequalified Project List and Loan Prospect Summary

03 - Design and Construction Status Report

04 - Loan Repayment Delinquency Report

STATEWIDE

Finance Section Director's Report Items - July 2022

CWCB SMALL FEASIBILITY STUDY GRANT FUND UPDATE:

New grant applications approved:

1. Colorado City Metropolitan District - Lake Beckwith Dam (\$50,000)

Previously approved grants in FY21/22:

1. Twin Lakes Reservoir and Canal Company - Grizzly Dam Rehabilitation (\$49,950)
2. Town of Dove Creek - Reservoir No. 2 (\$7,500)
3. St. Vrain and Left Hand Water Conservancy District - Copeland Reservoir Lining (\$50,000)

Total funds approved for feasibility study grants in FY21/22: \$157,450

COLORADO RIVER BASIN

COLORADO RIVER WATER USE—

2022 Colorado River Storage as of July 11, 2022			
	Elevation (feet above mean sea level)	Storage (MAF)	Percent of Capacity
Lake Mead	1,041.99	7.115	27%
Lake Powell	3,539.45	6.414	28%
Total System Active Storage		20.368	35%
2021 Total Active Storage		24.492	41%
		Flow (MAF)	Percent of Average
Forecasted Unregulated Inflow into Powell (Forecasted Water Year 2022)		5.735	60%

Forecasted CY 2022 Lower Basin Consumptive Use		
State	Use (MAF)	Total (MAF)
Arizona	2.145	
California		
California Agricultural	3.485	
Metro. Water District	1.114	4.615
Other	0.016	
Nevada	0.258	7.018

*Note MAF = million acre-feet

WATER CONSERVATION AND DROUGHT PLANNING UPDATES

Office of Water Conservation & Drought Planning Director's Report Items – July 2022

CWCB WATER EFFICIENCY GRANT FUND PROGRAM (WEGF) UPDATE:

Per the Board's decision in May 2021 to merge this program into the Water Plan Grant Conservation & Land Use Planning and the Engagement & Innovation category, applications will no longer be accepted through this grant program.

Staff will continue to spend down the funds that remain in the WEGF and update the Board on in-progress grants.

The following are deliverables sent to the CWCB since the last Director's Report:

- **Town of Hudson** – Water Efficiency Plan – *Final Plan Submitted*
- **Tri-County Water Conservancy District** – Water Efficiency Plan Update – *Final Plan Submitted*
- **Colorado Springs Utilities** – Water Efficiency Plan – *Final Plan Submitted*

(Ben Wade)

WATER EFFICIENCY & DROUGHT PLANS UPDATE: The Office of Water Conservation & Drought Planning (OWCDP) continues to work with the following providers to approve their Water Efficiency and Drought Management Plans:

DROUGHT MANAGEMENT PLANS

Approved Plans

No additional Plans have been approved since the last Board meeting.

Drought Management Plans in review

- City of Durango

(Megan O'Grady)

WATER EFFICIENCY PLANS

Approved Plans

No additional Plans have been approved since the last Board meeting.

The following plans have been given *conditional approval*. CWCB staff will continue to work with these entities until their respective Water Efficiency Plans achieve approval status.

Conditional Approval

- **Town of Frederick**
- **Tri County Water Conservancy District**

Water Efficiency Plans in review

- **Colorado Springs Utilities**
- **Town of Hudson**

(Kevin Reidy & Sam Stein)

GOVERNOR'S WATER AVAILABILITY TASK FORCE: The next Water Availability Task Force meeting will be held on July 19 from 9:30-11:30a. Please check the website ([Water Availability & Flood Task Forces | DNR CWCB \(colorado.gov\)](#)) for additional information. The June 2022 Drought Update is available here - [June 2022 Notes \(state.co.us\)](#) **(Megan O'Grady)**

WATERSHED AND FLOOD UPDATES

Flood Threat Bulletin Holds a Public Training Webinar –

On June 30, CWCB staff and its forecasting consultant Dewberry held a public webinar to demonstrate the availability and processes behind the Flood Threat Bulletin (FTB) forecasting program. The FTB program, now in its 17th year, aims to provide awareness of flood threats around the state throughout the primary flood season of May 1 through September 30. Dewberry was recently selected for an additional five-year program to administer these forecasting services with a directive to increase outreach and awareness of the service.

Approximately 50 attendees from around the state and from various professional arenas participated in the two hour event. The webinar spotlighted recent improvements to burn scar forecasts, a flood problem that continues to emerge throughout the state in recent years. It also discussed other recent improvements, how forecasts are developed and disseminated, forecasting metrics and how well the program meets the, how to join the email listserve, and forthcoming planned further improvements. Feedback from the webinar was generally positive.

The forecasts can be obtained through a link on the CWCB website, or directly at www.coloradofloodthreat.com as well as through various social media platforms.

(Kevin Houck)

CWCB Flood Section Earns National Award for the Second Year in a Row

On May 19th at a national conference of 1,400 attendees, the CWCB was announced as the award winner at the Association of State Floodplain Managers (ASFPM) for the Cooperating Technical Partners Recognition Program. This award recognizes the efforts of a floodplain mapping program, and is annually given to the mapping program that does "outstanding efforts to identify hazards and increase risk awareness" and this year, for the first time, this year a specific emphasis was placed on equity, diversity, and inclusion (EDI). Although announced at the ASFPM national conference, this is a FEMA-related award that is nominated and selected by peers from around the country.

Commendations should go to Terri Fead and Marta Blanco-Castano for their tireless efforts to not only move the program forward, but also to address our department Wildly Important Goal of EDI and to incorporate that into their work. It cannot be emphasized enough how hard these two staff members work, and their passion in their program is on full display through their efforts. Their work is largely out of the spotlight to the CWCB Board of Directors and many of the constituents of a water resource agency, but this award indicates the strength of this program despite its lack of high profile visibility.

This is matched up with a similar award from last year also won by another Flood Section program. Last year, the CWCB was selected for the Tom Lee State Award for Excellence in Floodplain Management by ASFPM for the Fluvial Hazard Mapping program, among other things. According to the ASFPM website

(<https://www.floods.org/membership-communities/recognize-and-support/awards/>), the Tom Lee State Award for Excellence is given annually to recognize an outstanding floodplain management program or activity at the state level.

Kudos for this award goes to Chris Sturm and his team for efforts that are visionary and groundbreaking on the national level, and address problems acutely experienced within our state. Unfortunately for Chris, this award came during a year of a virtual conference, so there was no public announcement, and he didn't get the pleasure of walking up to the stage to receive the award. It was subsequently announced in the association newsletter, available here: <https://www.floods.org/news-views/asfpm-updates/saluting-the-2021-asfpm-award-winners/>

It is worth emphasizing what a big deal both of these awards are. In the flood world, there is no bigger organization than the Association of State Floodplain Managers. With a national membership of more than 7,000 individuals, these awards provide substantial recognition to those in the industry. The CWCB can celebrate that as an agency, it won not just one award, but two within a two-year period.





(Kevin Houck)

Flood Section Sends Staff Member to Montana to Assist with Flood Recovery

From June 10th through the 13th, the State of Montana experienced the largest flood in its state history as a result of heavy rain combining with snowmelt runoff. While much of the national focus was on the damage to Yellowstone National Park (it's largest natural disaster since the devastating fire in the park in 1988), four counties within the State of Montana also experienced disaster-level damages.

Less than a week later, Montana officials reached out to the State of Colorado to request subject matter experts in floodplain management to come up to Montana to assist them and their local communities with damage assessment and kickstarting the recovery process. They specifically sought assistance from the State of Colorado due to the relatively recent experience in recovering from the 2013 floods. While the event in Montana ended up being more than an order of magnitude smaller in terms of damages experienced than Colorado's flood, they desired to leverage Colorado's experience in order to provide assistance for their own emerging recovery process.

The timing was unfortunate for the Flood Section for a number of reasons (one employee is out on maternity leave, another was getting married during this process, another was diagnosed with COVID, and another experienced a death of a close family member), but Doug Mahan stepped up and agreed to assist Montana and its citizens in their recovery during a two-week stint. Doug was deployed through the Emergency Management Assistance Compact (EMAC), an agreement between states that allows professionals from one state to assist another state in response and recovery processes, from June 21

through July 5. Doug's primary roles included overall damage assessment, determination of substantial damage declarations, and assisting local officials with forthcoming processes to begin recovery.

On June 16, President Biden approved Disaster Declaration DR-4655-CO, which authorizes federal funding to be made available to the State of Montana through FEMA and other federal funding sources. Areas primarily affected included Park, Carbon, and Stillwater Counties, and Doug also investigated flood damages in Flathead County as well.

As Section Chief and Doug's supervisor, I would like to thunderously commend Doug for taking two weeks out of his life to assist the citizens and professionals of Montana in the recovery from this devastating event. Doug was away from home for 14 consecutive days, worked long hours, interacted with hundreds of people affected by the flood, and came home with a smile on his face.

After living through the 2013 flood as a CWCB employee, I know what is awaiting the people in these affected areas of Montana, as well as the state and local officials charged with the recovery. While watching the early phases of this event, I could not help but notice the similarities between this event and our own flood of nearly a decade ago. Roads were eroded away, transportation corridors were completely shut down, and rivers relocated to new corridors. State officials quickly labelled this biggest flood disaster in state history. While the affected area in Montana has a much lower population density, the mechanics of this flood were frightfully similar. CWCB staff spent five years in flood recovery from the 2013 event, and there are some isolated recovery processes outside of CWCB jurisdiction that are still ongoing in 2022. While floods of this magnitude are thankfully not common, they are enormously impactful, and people that survived the Colorado flood nine years ago are still affected by it in many ways.

I am enormously proud of Doug for his service to a nearby state within our region. I hope it made what I know to be a life-altering, stressful, and difficult situation incrementally better by his presence. I believe there is nothing better that my section (indeed our entire agency) can claim to do than helping people in need. Doug's recent actions are a very tangible public example of that.

Doug plans to report to the Board at the September 2022 meeting regarding his experience.

(Kevin Houck)

Wildfire Ready Watersheds

Wildfire Ready Watersheds is a strategy and program developed by the Colorado Water Conservation Board that provides a proactive approach to address post wildfire impacts. Impacts are defined as risks posed by post fire hazards to community values such as water supplies, life and property, and transportation corridors. Common post fire hazards include increased runoff, debris flows, hillslope erosion, water quality impairments, flooding, and associated sediment erosion and deposition. The mission of Wildfire Ready Watersheds is to assess the susceptibility of Colorado's water resources, communities, and critical infrastructure to post-wildfire impacts and advance a framework for communities to plan and implement mitigation strategies to minimize these impacts – before wildfires

occur.

Wildfire Ready Watersheds is currently under development and has a two-part focus: (1) a statewide post-fire susceptibility analysis and (2) a framework that communities can use to perform watershed scale planning to address post fire hazards. Elements of the framework could also be used for communities after wildfires occur, but the focus of Wildfire Ready Watersheds is to mitigate those hazards before such an event. The susceptibility analysis is composed of several phases; data collection, data development, analysis, mapping, and reporting. This effort will rely on existing and new statewide datasets for wildfire hazards, critical water supplies, populations at risk, and other infrastructure layers. The data is being used to perform a susceptibility analysis that intersects post fire hazards with known values/assets at risk to determine impacts to life safety, infrastructure, and property. This will serve to further an understanding of which watersheds will be most susceptible to post wildfire impacts and where community stakeholders should focus their efforts in their wildfire mitigation efforts.

The framework will further describe and provide guidance on how to refine the susceptibility evaluations for local communities to utilize at watershed scales. It will serve as a guide for best planning practices in advance of a wildfire and will also support post-fire mitigation strategies. This includes data collection and GIS preparedness, permitting and compliance, stakeholder development, hazard analysis and evaluations, engineering/modeling, pre and post fire management actions, design, and construction. Design and construction will include project types that can be implemented before and after wildfire. Many projects implemented after a fire are for immediate protection of life, property, and water supplies and have limited success as they are treating point of impact type problems with little regard to watershed health or stream function. Projects constructed before fire provide the same or better protections while also addressing multiple objectives in watershed health and water supply protection. These project types are designed to protect and enhance ecosystem structure and function within the watershed drainage network. Most implementation strategies will involve a mosaic of different project types employed across the watershed.

The website for the program is now live at www.wildfirereadywatersheds.com CWCB staff will be presenting the program to Basin Roundtables at their July (Rio Grande, Arkansas, Yampa/White/Green, Gunnison, Colorado, & Southwest), August (South Platte), and September (North Platte) meetings. Staff is waiting to hear back from the Metro Basin to schedule a presentation. Staff will also be presenting at the Sustaining Colorado Watersheds conference in October and the Colorado Association of Stormwater and Floodplain Managers conference (pending abstract acceptance) in September.

Staff will update the Basin Roundtables on the program and specifically the water infrastructure identified as values at risk. This includes municipal intakes, diversions & ditches, and jurisdictional dams & reservoirs. When values at risk overlap with hazards, e.g. debris flow paths, flooding, fluvial hazards, areas of susceptibility are identified.

(Chris Sturm)

Colorado Floodplain and Stormwater Criteria Manual

CWCB staff are working with their Consultant to get final Steering Committee comments incorporated into the Draft Statewide Floodplain and Stormwater Criteria Manual (Criteria Manual) Phase 1 update. Once Steering Committee comments have been resolved, and a review of the compiled chapters has been performed, the draft Criteria Manual Phase 1 update will be uploaded to the CWCB website for public review and comment (mid to late July). Release of the draft document has been delayed to improve the content and usability for our local governments. Several public webinars for engagement on the draft Phase 1 chapters will take place early in the six-week public review period. Phase 1 provides guidance that better aligns with recent federal and industry standards and revised information to help communities manage floodplain and stormwater projects.

A subsequent, Phase 2, update will include revisions to remaining sections of the Criteria Manual. Updates are to align with Colorado's watershed protection and management program as well as improved industry standards. The Phase 2 Steering Committee kick-off is expected to take place during the Phase 1 public review period.

The Letter of Map Revision (LOMR) Review Partners Program

The CWCB LOMR Review Partners Program has been growing as staff work with applicants, communities and the Federal Emergency Management Agency (FEMA) to answer questions, provide guidance, and work through complex issues for both ongoing and upcoming map revision requests. CWCB processes and makes recommendations for revision requests on behalf of FEMA to modify flood hazard information on Flood Insurance Rate Maps (FIRMs). FEMA determines if the revision request will be approved, or become effective. We have 49 cases in process with ongoing cases in Weld, Douglas, El Paso, Elbert, Boulder, Summit, Garfield, Gilpin, Grand, Jefferson, Clear Creek, Larimer, Montrose, Sedgwick, Summit, Pueblo, and Prowers Counties.

June 2022 Risk Mapping, Assessment and Planning (MAP) Project Updates by Major Water Basin

CWCB is FEMA's Cooperating Technical Partner (CTP) for the state while Mile High Flood District (MHFD) is the CTP within their service area (Denver Metropolitan Area). CWCB provides support for and coordination with MHFD on projects and data sharing for communities that extend across common boundaries.

North Platte – No flood hazard studies are being conducted in this area.

South Platte – Adams, Arapahoe, Boulder, Larimer, Lincoln, Logan, Morgan, Park, Phillips, and Weld Counties have ongoing Risk MAP studies. Ongoing CWCB studies within the South Platte basin are as follows:

- Phillips County Phases 2-3: The project is on target to have Preliminary products for the PMR issued by the end of July 2022. Communities will have a 30-day comment period before the Community Coordination Officer (CCO) and Public Meetings take place. The CCO provides another opportunity to review changes in flood risk, address questions, discuss outreach and risk communication efforts and available resources and assistance from CWCB and FEMA before preliminary mapping to become effective. The Public Meeting is an open house with all residents, stakeholders, and community members to educate them on the mapping and insurance implications and answer individual questions.
- Park County Phase 2: A Phase 2 (Data Development) Kickoff meeting is anticipated with communities in August 2022. Some communities are looking at potential workshops for community staff on interpreting and using the draft flood hazard data.
- Base Level Engineering (BLE): BLE is a large-scale, automated approach to developing draft approximate (Zone A) flood risk datasets and floodplains in order to provide communities with an initial overview of the potential flood hazard at the local level. These datasets provide communities with best available information relative to flood hazard to assist with planning, risk awareness, and emergency management. Final BLE results meet FEMA requirements for Zone A floodplains; however, not all of the BLE results will become regulatory products.
 - Logan County: BLE/Discovery review comments have been incorporated and are with FEMA for a back-check. Information received from the Communities during the BLE/Discovery process are being used for scoping the Data Development process (Phase 2). A Phase 2 kickoff meeting is expected to occur late August or early September 2022.
 - Phillips County: A countywide BLE/Discovery process will be starting this summer. The project is to identify flood hazard for flooding sources not included in the ongoing map revision. A project kickoff meeting is expected to take place late July or early August 2022.
 - Adams and Arapahoe Counties: The BLE modeling is getting underway for remaining portions of Adams and Arapahoe counties. CWCB and MHFD are coordinating on outreach efforts for the BLE Kickoff Meetings for these counties. CWCB is developing draft countywide BLE data. Portions of these counties are within both the CWCB and MHFD CTP service areas. Draft BLE data outside the MHFD will continue through the Risk MAP process being followed for other counties across the state. Draft BLE data developed within the Denver Metropolitan Area will be provided to MHFD for their future use, but will not be developed further by CWCB. MHFD already has effective detailed data for the majority of their service area. This draft BLE data will help them verify effective older approximate flood hazard data, and identify where flood hazard data might be developed for previously unstudied flooding sources. BLE data does not replace effective model-backed flood hazard information. MHFD will have the base BLE models, and may choose to leverage any of this data in the future.

- Morgan County BLE: We just closed the period for communities to provide feedback regarding the Discovery/Phase 1 effort, and will be getting ready to finalize and start the new Phase 2/Data Development work in the next few months.
- Lincoln County: A countywide BLE/Discovery effort is expected to begin in the near future for flooding sources not included with the ongoing map revisions.
- Colorado Hazard Mapping Program (CHAMP) Physical Map Revisions: The CWCB was able to leverage funds from FEMA to continue several CHAMP studies through the FEMA regulatory process. CHAMP involved analyzing streams across seven counties in central and northeast Colorado and includes over 200 FIRM panel updates. The remaining counties being completed include Boulder, Weld, and Larimer.
 - Boulder County: This Physical Map Revision (PMR) is still on hold as the National Building Science (NBS) has been creating a pool of potential candidates for assembling a Scientific Review Panel (SRP) to resolve the single outstanding comment needing resolution. FEMA will have 30 days to respond and complete panel selection. Once the SRP is assembled, they have 90 days to make a determination and resolve the appeal. At that point, the PMR will proceed through the FEMA process toward the issuance of the Letter of Final Determination (LFD).
 - Weld County: This project has completed the appeal period, and appeals have been resolved. We anticipate the PMR products to be submitted at the end of July, and anticipate an LFD issued by the end of September. The revised Flood Insurance Study (FIS) and Flood Insurance Rate Maps (FIRMs) will go effective six months after the LFD has been issued.
 - Larimer County: The 90-day mandatory appeal period started May 18, 2022, and will end on August 16, 2022. Appeals and comments are submitted through the community to FEMA. All comment or appeal submittals received will be reviewed by FEMA. Once any valid comments and appeals have been resolved, the project will move toward the issuance of the LFD.

Colorado – Mesa, Eagle, Summit, and Garfield Counties have ongoing Risk MAP studies:

- Flood Risk Information System (Mesa County): Based on additional staff input, minor modifications are being performed on the draft website for this Flood Risk Information System (FRIS) pilot project. Staff and our Contractor will meet with communities in Mesa County to showcase the site and obtain additional input. Once community feedback has been adequately addressed, the site will go live.
- City of Grand Junction Levee (Mesa County): The City of Grand Junction has been in the process of obtaining an engineering firm to work toward levee certification. The City will be addressing the levee deficiencies as the Risk MAP study moves forward.

- Eagle County Physical Map Revision Phases 2-3: The revised Roaring Fork River hydraulic analysis and floodplain mapping have been approved by FEMA. The revisions were made to accommodate the 0.00-ft surcharge floodway that Eagle County and the Town of Basalt have adopted for the river. Results were shared with staff from Eagle County, the Town of Basalt, and the Town's Consultant. The communities requested the models to incorporate additional survey data to supplement the terrain data where heavy vegetation exists. They will use the additional data to evaluate mitigation options to reduce the expanded floodway mapping in specific areas of concern.
- Garfield County Phase 2-3: The inability to gain access through private property for survey crews to collect field data for stream cross sections and hydraulic crossing structures has resulted in more than a three month delay. Even after implementation of additional outreach efforts, property owners have not responded to allow collection of supplemental data. The additional data would allow our Contractor to refine analyses of flooding sources near existing development. The study may need to go forward using only the LiDAR terrain data and minimal crossing structure information in these areas, given the remaining FEMA grant funding and timeline. Once accessible field data collection is obtained, our Contractor will move ahead with the hydrologic and hydraulic analyses for Phase 2 based on the best available information acquired.
- Summit County BLE/Phase 2: We wrapped up the Phase 1/BLE effort and are getting ready to kick off Phase 2 in the next couple of months.

Gunnison – Delta, Gunnison, and Ouray Counties have ongoing studies:

- Delta County Phase 2-3. Floodplain mapping was approved by FEMA. A Resilience Meeting with the communities is scheduled for July 7, 2022. Non-regulatory Flood Risk Products will be reviewed during the meeting. These products help the communities in outreach efforts for risk communication and mapping changes based on the revised study. We will also discuss mitigation grants/opportunities.
- Ouray County: The Consultation Coordination Officer (CCO) meeting was held June 29th in Ridgway, CO. Preparing the communities for the upcoming due process, risk communication and outreach actions, and determining how CWCB and FEMA can support these efforts. Three public meetings also took place on the 29th. The purpose of the study, project extents, timeline, flood risk changes and associated implications were presented. Attendees were encouraged to review the FIRMs and ask questions. Information on what data is available, where to obtain digital files or view the preliminary products, the upcoming appeal period, the contacts, and where to submit comments and appeals was also discussed. FEMA's flood insurance purpose and risk rating processes were explained. A flood risk recap and recommended actions to learn more and reduce flood impacts were provided.

- Gunnison Countywide BLE: Responses to community comments were provided in early June. Phase 1 products have been revised to incorporate feedback, and are going to FEMA for final approval.
- Gunnison County PMR: Responses to community comments received after the Flood Risk Review meeting for the Gunnison River and Coal Creek Physical Map Revision were provided in early June. CWCB and our Contractor have continued working with communities on flood risk concerns. Hydraulic modeling is with FEMA for review.

Rio Grande – Alamosa, Costilla and Mineral Counties have ongoing studies:

- Alamosa County BLE: Terrain processing from the new LiDAR data has been completed, and model domains are being defined. We anticipate a project kickoff meeting with communities in the near future.
- Costilla County: Our Consultant is using the new high-resolution LiDAR data to develop revised flood hazard information for remaining segments of effective approximate flood hazard areas (Zone A floodplains). A revised preliminary distribution of the updated FIRM panels will take place before the project will move forward.
- Mineral County/City of Creede LOMR: Additional requested data was submitted to FEMA for the Willow Creek Levee certification within the City of Creede. Development of preliminary products will move forward once the hydraulic analysis and floodplain mapping have received FEMA approval.

Arkansas – Lake, Chaffee, Custer, Fremont, Pueblo, El Paso, Huerfano, Las Animas, Otero, Bent, and Prowers Counties have ongoing studies:

- Lake County Phase 2 Additional Scope: Lake's BLE submittal was been approved by FEMA. The Lake County project is moving forward with FY21 FEMA funding to comply with community-requested hydraulic modeling and floodplain mapping for an additional flooding source in Leadville. We are on hold pending information on the buried culvert. Not accounting for conveyance through this culvert has significant impacts on the hydraulic modeling and flood hazard mapping in this area.
- Chaffee County Phase 2 Additional Scope: Field survey and hydrology are underway for several streams of interest to catch up with hydrology and hydraulic modeling for the countywide study.
- Custer BLE: CWCB staff have been providing communities with requested information on participating in the NFIP. The Town of Silver Cliff is joining the NFIP, while the Town of Westcliffe is also considering participation. Phase 2 Kickoff materials are being prepared for an anticipated meeting in late summer.

- Pueblo County BLE: The Discovery meeting was held on May 10, 2022. We are awaiting community comments on the draft data and Discovery report. Field visits for levee assessments included in this project are being coordinated.
- Huerfano Phase 2: Hydraulics are undergoing internal review. Severance tax funding will support revised BLE hydrology and hydraulic analyses using the latest HEC-RAS 6.2 software applications for spatially varied Curve Numbers (CNs) to refine hydrology for the flood risk information. A comparison between results from the revised hydrology and the previous results (only allowing for a constant CN, given the lack of options for modeling available in 2020-2021) to assess the magnitude of changes between the methodologies. Results of the comparison will help determine if the benefits of using the new model feature are significant enough to be considered in other ongoing flood hazard studies.
- Bent County: The additional small reach of detailed hydraulic analysis (Zone AE mapping) along the western portion of the existing Arkansas River South Levee has been completed, and is being used to perform the state-funded interior drainage analysis for the levee (a requirement for certification). The levee provides protection to the City of Las Animas. CWCB, out Contractor, and FEMA have coordinated to assist the Arkansas River Levee District and County in their efforts to contract with an engineering firm for levee certification. Once certified, the levee would be accredited by FEMA. The resulting flood hazard mapping would be able to reflect the levee flood protection on the FIRM. CWCB's Consultant has also worked with communities to develop a state funded Emergency Preparedness Plan for the levee (also required for certification).
- Otero County: Floodplain mapping was submitted for FEMA review on June 3rd. Comments are expected in mid-July 2022.
- City of Las Animas (Bent County) Pre-Levee: See updates to this project under the Bent County project entry above.
- El Paso Phase 2 and Templeton Gap (T-Gap) pre-levee work: BLE modeling was approved mid-May. Hydrology and most surveying for year 1 and 2 data development (Phase 2) is wrapping up. For the additional flooding sources requested by El Paso County and Colorado Springs (Phase 2, year 3) field survey is being completed and hydrology is being developed. Coordination is taking place with both Colorado Springs and El Paso County on providing representative hydrology for the Sand Creek watershed.
- Las Animas County Phase 2: Phase 2 currently on hold. CWCB waiting for Contractor scope to provide additional detailed hydraulic analysis (Zone AE floodplain) for a small effective stream and some community requested upgrades to detailed studies for additional flooding sources. The BLE deliverable that was being reviewed by FEMA just came back approved.

- Fremont County Phase 2: Data development work is underway, and field survey has been submitted for FEMA review. We are currently developing the detailed hydrology models needed for the Phase 2 analysis for specific flooding sources.
- Prowers County Phase 2: Contractor working on hydrology and hydraulics for the additional detailed stream miles requested by communities.
- Towns of Granada/Holly/Lamar (Prowers County) Pre-Levee assessments: We are finishing up some additional levee evaluation, Interior Drainage Analyses, and Emergency Action Plans for all three communities through a severance-funded Task Order. These products are required for any levee certification efforts. No major update.

Yampa/White –Moffat County has an ongoing Risk Map study:

- Moffat County: Outstanding modeling comments are being addressed and floodplain mapping is underway. Ongoing coordination with CDOT to obtain Yampa River culvert modeling, and provide data to CDOT for a project in Craig.

San Miguel/Dolores/Animas/San Juan – La Plata, Dolores, Montezuma, Archuleta, San Juan, and the southern parts of Hinsdale and Mineral Counties, along with the Southern Ute Tribal nation, have ongoing studies. Hinsdale County is address under the multi-watershed projects, while Mineral is address under the Rio Grande.

- Animas Watershed Phases 3-4: Appeal periods have ended for San Juan, Archuleta, La Plata Counties, and the Southern Ute Indian Tribe. CWCB, our Contractor, and FEMA are coordinating on responses to a couple of submittals received in La Plata County.
- Southwest Colorado (Montezuma, Dolores, San Juan, La Plata, Archuleta, Hinsdale, and Mineral Counties) BLE: Discovery meetings held with Archuleta, La Plata, San Juan, Dolores and Montezuma Counties. Representatives for the Ute Mountain Ute and Southern Ute Indian Tribes attended several of the countywide meetings. A Discovery meeting was also held with representatives of the Southern Ute Indian Tribe regarding specific draft flood hazard information within Tribal lands. We are waiting for any input from the communities before the deadline in a few weeks.

Multi-Watershed Risk Map Projects:

- Elbert County: An additional coordination meeting was held with the County on how the Risk MAP Discovery information could be used for the ongoing Hazard Mitigation Plan Update. Discovery products were revised to address both community and FEMA comments, and will be

resubmitted to FEMA for approval in mid-July 2022. Phase 2 (Data Development) scoping is being determined based on community input.

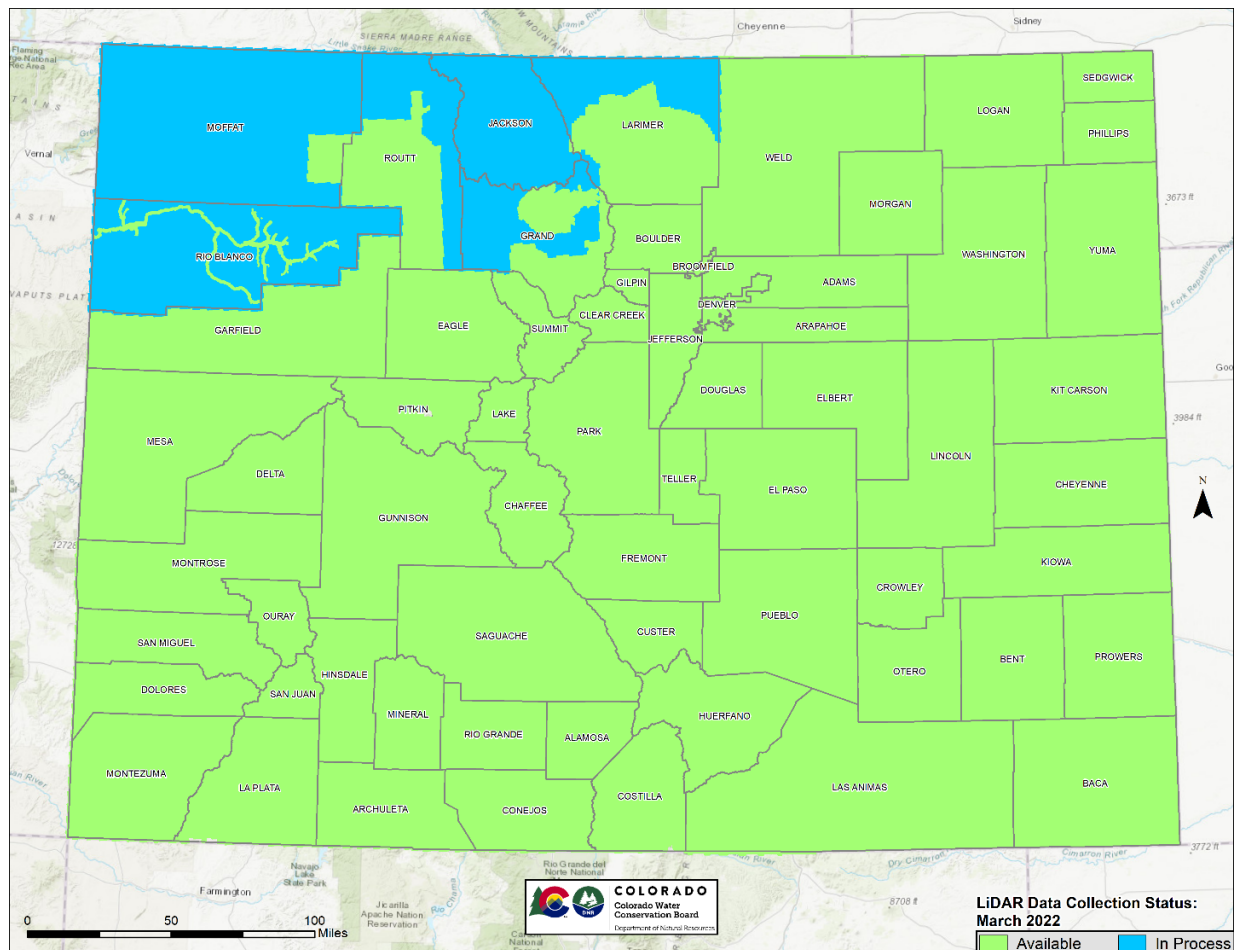
- Mesa County Phase 2: Still having problems getting access to some private property areas for field survey data of stream cross sections and some crossing structures. May need to move ahead with study using best data available due to limited FEMA funding and grant timeline. Mapping Activity Statement Amendment for additional community flooding sources approved by FEMA. Updating of hydraulic modeling is underway.
-
- Hinsdale County/Lake City Partial Countywide: Preliminary products were issued May 20, 2022. Coordination is underway to hold both the CCO and Public Open Houses in mid-July.
- Hinsdale Countywide BLE: We are holding the Discovery meeting on 7/15 with both the County and the Town of Lake City.
- Teller County Phase 2: Still working on hydraulics. Our program is also funding additional work to investigate/resolve issues with significant hydrology discrepancies for some flooding sources at county boundaries. The Contractor is also investigating concerns regarding use of hydrology methods in some steep, mountainous terrain. Results are expected to provide some guidance or best practices for many of our ongoing and upcoming flood risk studies across Colorado.
- Colorado Hazard Mapping Program (CHAMP) Phase 3: This set of studies originated from the Colorado Senate Bill (15-245) which was put forth as a response to the destructive 2013 floods. This bill released funding to better assess and map various flood related hazards, including debris flows and erosion, throughout Colorado. As such, CWCB funded a paper inventory reduction effort through various counties across the state that were still using old paper floodplain maps and needed updated flood risk information, especially if they were affected by these floods and the local conditions were clearly changed. Several county projects that were scoped as part of this CHAMP effort are still ongoing, including the ones listed below.
 - San Miguel County: This partial countywide project is still on hold pending as-built data for the completed phases of the Valley Floor Restoration project in the Town of Telluride. The Town is going to submit a LOMR for these improvements based on the effective mapping in the near future. Hydraulic analysis for portions of the San Miguel through the Telluride area will need to be revised using the updated hydrology to reflect impacts of the as-built Valley Floor Restoration project into the partial countywide study.
 - Lincoln County Phases 2-3: The floodplain mapping was approved the end of May, 2022. Once Flood Risk Products have been completed, a Resilience Meeting will be held with all impacted communities. This is anticipated to take place in late July or early August.
 - Saguache County: The alluvial fan analysis will be put on hold pending additional information from FEMA on alluvial fan requirements and subsequent implications. Our Consultant will move forward with countywide study of flooding sources other than North

Crestone Creek. Possible reallocation of funds to provide technical assistance for diversion structure mitigation upstream of the Town of Crestone being considered.

LiDAR acquisition: CWCB received \$3.4 million in a FEMA FY16 grant and \$2.2 million in FY18 for LiDAR acquisition in Colorado for future floodplain mapping and hazard assessment projects. The USGS is completing the last few areas in northwest Colorado that were missing updated LiDAR.

- LiDAR collection tasks that were recently completed include the Eastern Colorado Plains data collection, led by the USGS, the DRCOG LiDAR for the Denver Metropolitan Area, and the San Luis Valley/San Miguel/Pitkin areas. The remaining LiDAR acquisition for the Northwest CO region is currently going through final USGS QA-QC.
 - Northwest CO Project: USGS likely won't have the final deliverables for this project area until late 2022.

Below is the most recent status map for LiDAR data acquired in Colorado (No updates since March 2022):



(Terri Fead and Marta Blanco Castano)

WATER SUPPLY PLANNING SECTION UPDATES

The Colorado Water Plan was released for a 90-day public comment period on June 30, 2022 and will be available through engagecwcb.org until September 30, 2022. Staff will be traveling around the state attempting to visit all 64 Colorado counties during the public comment period to talk to Coloradans about the plan and gather feedback. To see where they'll be visit the [Catch Us Around the State page](#). CWCB will host four virtual listening sessions to engage and hear from the public during the Water Plan public comment period. They will each focus on the four Action Areas of the [Water Plan update](#). The listening sessions will be recorded and posted online following the events. Anyone can go to any of the meetings but we're focusing staff topically as follows:

- 7/27, 4-6 PM: Thriving Watersheds
- 8/10, 4-6 PM: Resilient Planning
- 9/1, 4-6 PM: Vibrant Communities
- 9/28: 4-6 PM: Robust Agriculture

In June the second annual meeting of the IBCC was held in Breckenridge.

In June the HB-1051 (municipal water use/efficiency) reporting framework went live for water use and conservation reporting for covered entities. It will remain open to collect that data through September 2022.

The first-ever PEPO grant applications were received through the updated grant and loan portal for the June 1 deadline. This deadline has been extended to accommodate the new process and the updated due date for applications.

Becky's Director's Calls Notes - WSP Bullets

- The Colorado Water Plan was released for a 90-day public comment period on June 30, 2022 and will be available through engagecwcb.org until September 30, 2022. Staff will be traveling around the state attempting to visit all 64 Colorado counties during the public comment period to talk to Coloradans about the plan and gather feedback. To see where they'll be visit the [Catch Us Around the State page](#).
- CWCB will host four virtual listening sessions to engage and hear from the public during the Water Plan public comment period. They will each focus on the four Action Areas of the [Water Plan update](#). The listening sessions will be recorded and posted online following each event. Anyone can attend any of the listening sessions but we will have staff attending focused as follows:
 - 7/27, 4-6 PM: Thriving Watersheds
 - 8/10, 4-6 PM: Resilient Planning
 - 9/1, 4-6 PM: Vibrant Communities
 - 9/28: 4-6 PM: Robust Agriculture

- The Interbasin Compact Committee met June 30 in Breckenridge. The meeting agenda included a range of topics including federal funding, a report out from the PEPO and Workplan subcommittees, Colorado River updates, and basin reports. The meeting was followed by a Water Plan celebration lunch which was also attended by Director Dutton
- Water Plan-related media coverage has included several stories to date. Details below:
 - [Colorado Sun](#): "Colorado to release draft of new water plan, calling it a blueprint for the state's future"
 - [The Fence Post](#) (via Water for Colorado Coalition): "Water for Colorado Coalition celebrates the release of updated Colorado water plan"
 - [KUNC radio](#): "Colorado's water shortages are already here and getting worse, according to updated state plan"
 - [Heart of the Rockies radio](#): "Colorado Water Plan available for comment"
 - [Aspen Times](#): "Colorado officials looking for engagement on updated water plan" (story picked up by Steamboat Pilot & Summit Daily)
 - [9News](#): "Colorado Water Plan open for public comment through September" (includes interview w/ Alex Funk, but we plan to do a CWCB interview soon as well)
 - [Summit Daily](#): "Competing for resources, varying flows are expected of Colorado River Basin, draft water plan states"
 - [Boulder Daily Camera](#): "Colorado's 2023 draft water plan encourages 'sharing' to meet future needs"
- Jeff Rodriguez recently joined the Water Supply Planning team, backfilling Sam's previous position. Jeff has already started jumping in on any number of things and will be working to get around to every roundtable in the coming months. He will be our primary roundtable liaison. Jeff comes from an outreach and environmental education background, has done community-based research, and has worked on stakeholder engagement with diverse populations.

WATER SUPPLY RESERVE FUND GRANTS:

The following table summarizes the Water Supply Reserve Fund Grants \$50,000 and under that will be sent to the CWCB Director, Rebecca Mitchell, for approval.

Basin	Applicant/Grantee	Name of Water Activity	Basin(s) Account Request	RT Approved Request	Funding Recommendation
Gunnison	Double Heart, LLC	Hot Springs Reservoir Outlet Gate Improvement & Automation	\$30,000	\$25,000	\$25,000

INSTREAM FLOW ATTACHMENTS

RECENTLY DECREED ISF WATER RIGHTS: On June 29, 2022, the Division 1 Water Court decreed instream flow (ISF) water rights to the CWCB on a reach of Dry Gulch in Case No. 21CW3210 for 0.67 cfs (01/01 - 04/30), 5.4 cfs (05/01 - 07/31), 2 cfs (08/01 - 09/30), and 0.85 cfs (10/01 - 12/31), with an appropriation date of January 25, 2021. The upstream terminus is Dry Gulch's headwaters, and the lower terminus is the confluence with Clear Creek. This reach is approximately 2.83 miles long and flows in a southeasterly direction through parts of Clear Creek County. No statements of opposition were filed in this case. Colorado Parks and Wildlife recommended an ISF on this reach of Dry Gulch to protect the natural environment which includes a population of Bear Creek greenback cutthroat trout, which are listed as a threatened species by both the state and federal government.

July 20-21, 2022 Board Meeting Instream Flow and Natural Lake Level Program Summary of Resolved Legal Protection Cases

The Board's Instream Flow ("ISF") Rule 8i(1) states:

In the event the pretrial resolution includes terms and conditions preventing injury or interference and does not involve a modification, or acceptance of injury or interference with mitigation, the Board is not required to review and ratify the pretrial resolution. Staff may authorize its counsel to sign any court documents necessary to finalize this type of pretrial resolution without Board ratification.

Staff has resolved issues of potential injury in the following water court cases. Staff, along with the Attorney General's Office, has stipulated in 5 cases in which CWCB had filed a Statement of Opposition, and 2 other cases were withdrawn. Staff obtained an agreement via a letter-in-lieu of filing a Statement of Opposition in 4 cases.

A. STATEMENTS OF OPPOSITION

(1) Case No. 19CW3034 (Water Division 4) - Application of Dalwhinnie Group LLC

The Board ratified this Statement of Opposition at its September 2019 meeting. Applicant requested approval of a plan for augmentation. Staff, in cooperation with the Attorney General's Office, has negotiated a settlement to ensure that the CWCB's ISF water rights will not be injured.

The CWCB holds ISF water rights, including the following, in Water Division 4 in the Uncompahgre watershed that could have been injured by this application:

Case Number	Stream	Upper Terminus	Lower Terminus	CFS Rate (Dates)	Approp. Date
98CW0234	Dallas Creek	confl E & W Forks Dallas Cr	confl Ridgway Reservoir	9 (10/15 - 4/30) 20 (5/1 - 10/14)	07/13/1998
98CW0222	Uncompahgre River	Highway 62 bridge	confl Ridgway Res	20 (10/15 - 4/30) 65 (5/1 - 10/14)	07/13/1998

In addition to standard terms regarding measuring devices, accounting and retained jurisdiction, the Applicant has agreed to the following additional protective terms and conditions:

- This well [Shining Mountain Well No. 2 Groundwater Right] diverts groundwater from Kettle Gulch Slough, which is a tributary to the Uncompahgre River. Because of the proximity of Shining Mountain Well No, 2 to the Slough, at times when the slough is running to the confluence with the Uncompahgre River, this well will have no delayed impact on the stream and thus may operate as a headgate well, capable of being administered within the priority system. If Kettle Gulch Slough in the immediate vicinity of Shining Mountain Well No. 2 down to the confluence with the Uncompahgre River is not running, then the pumping depletions to the Uncompahgre River will be calculated based on the Unit Response Function in [decree] Table 4. The Court finds that Applicant has the requisite intent and ability to construct and use this Well to justify a conditional water right.
- Pursuant to the Rotational Irrigation agreement, Applicant is entitled to delivery of the entire amount of water flowing through the McDonald-Cuddigan Ditch for 3.5 out of every ten days. To maintain historical return flow obligations associated with the 7/10ths interest of Priority 6 water right changed herein (represented by dry-up of 7 of the 10 acres historically irrigated by Applicant's interest in Priority 6) when operating under the rotation agreement, the Applicant will deliver the following flow rates [see decree table] included in column (5) to the Uncompahgre River at the Pipeline Outfall shown in Figure 1 and storage amounts included in column (6) from the Augmentation Pond.
- In the event of a CWCB instream flow water right call, Applicant will not aggregate replacement obligations, and shall make daily local replacements as required to comply with the call if required by the Division Engineer, or shall curtail diversions.
- The dried-up acreage must be monumented with signs in the field to ensure dry-up of the dedicated seven acres.

(2) Case No. 19CW3091 (Water Division 4) - Application of Dalwhinnie Group LLC

The Board ratified this Statement of Opposition at its March 2020 meeting. Applicant requested conditional groundwater use. Staff, in cooperation with the Attorney General's Office, has negotiated a settlement to ensure that the CWCB's ISF water rights will not be injured.

The CWCB holds ISF water rights, including the following, in Water Division 4 in the Uncompahgre watershed that could have been injured by this application:

Case Number	Stream	Upper Terminus	Lower Terminus	CFS Rate (Dates)	Approp. Date
98CW0234	Dallas Creek	confl E & W Forks Dallas Cr	confl Ridgway Reservoir	9 (10/15 - 4/30) 20 (5/1 - 10/14)	07/13/1998
98CW0222	Uncompahgre River	Highway 62 bridge	confl Ridgway Res	20 (10/15 - 4/30) 65 (5/1 - 10/14)	07/13/1998

In addition to standard terms regarding measuring devices, accounting and retained jurisdiction, the Applicant has agreed to the following additional protective terms and conditions:

- Because of the proximity of Dalwhinnie Ag Well No. 1 to the Slough, at times when the slough is running to the confluence with the Uncompahgre River, this well will have no delayed impact on the stream and thus may operate as a headgate well, capable of being administered within the priority system. If water is not flowing in Kettle Gulch Slough at the closest point to Dalwhinnie Ag Well No. 1 to the confluence with the Uncompahgre River, then the water depletions from pumping the Dalwhinnie Ag Well No. 1 will be lagged to the Uncompahgre River. Currently there is not an augmentation plan for Dalwhinnie Ag Well No. 1 to offset delayed depletions to the Uncompahgre River. Until such time that an Augmentation Plan or Substitute Water Supply Plan is approved for Ag Well No. 2, if water is not flowing in Kettle Gulch Slough at the closest point to Dalwhinnie Ag Well No. 1 to the confluence with the Uncompahgre River, the Ag Well No. 1 must be immediately curtailed to prevent delayed depletions.

(3) Case No. 19CW3092 (Water Division 4) - Application of Dalwhinnie Group LLC

The Board ratified this Statement of Opposition at its March 2020 meeting. Applicant requested approval of ground water rights and a supplemental plan for augmentation. Staff, in cooperation with the Attorney General's Office, has negotiated a settlement to ensure that the CWCB's ISF water rights will not be injured.

The CWCB holds ISFwater rights, including the following, in Water Division 4 in the Uncompahgre watershed that could have been injured by this application:

Case Number	Stream	Upper Terminus	Lower Terminus	CFS Rate (Dates)	Approp. Date
98CW0234	Dallas Creek	confl E & W Forks Dallas Cr	confl Ridgway Reservoir	9 (10/15 - 4/30) 20 (5/1 - 10/14)	07/13/1998
98CW0222	Uncompahgre River	Highway 62 bridge	confl Ridgway Res	20 (10/15 - 4/30) 65 (5/1 - 10/14)	07/13/1998

In addition to standard terms regarding measuring devices, accounting and retained jurisdiction, the Applicant has agreed to the following additional protective terms and conditions:

- Prior to the use of Dalwhinnie Ranch Augmentation Pond as an augmentation source, Applicant must supply the Division Engineer written notice that the augmentation pond has been constructed and filled with replacement water. Such notice shall include an as-built stage capacity table, an estimate of the active capacity of the pond, a profile of the pond showing the elevation of the inlet and outlet structures, confirmation that an operable and lockable outlet structure has been installed, and a staff gauge installed in the pond. The Division Engineer shall have complete discretion as to the necessity for, timing of, and amount of, any call upon the water in the pond.

The Division Engineer may modify transit losses as necessary. In the event of a CWCB instream flow water right call, Applicant will not aggregate replacement obligations, and shall make daily local replacements as required to comply with the call if required by the Division Engineer, or shall curtail diversions.

(4) Case No. 21CW3039 (Water Division 4) - Application of Tri-State Generation and Transmission Association, Inc.

The Board ratified this Statement of Opposition at its November 2021 meeting. Applicant sought a change of water right. In this case, Applicant filed to dismiss its case without Prejudice. The Court granted the dismissal on June 30, 2022.

The CWCB holds ISF water rights, including the following, in Water Division 4 in the Lower Dolores and San Miguel watersheds that could have been injured by this application:

Case Number	Stream	Upper Terminus	Lower Terminus	CFS Rate (Dates)	Approp. Date
15CW3111	Dolores River	confl San Miguel River	private road bridge	900 (4/15 - 6/14) 400 (6/15 - 7/15) 200 (7/16 - 8/14) 100 (8/15 - 3/15) 200 (3/16 - 4/14)	01/28/2014
11CW0129	San Miguel River	confl Calamity Draw	confl Dolores River	325 (4/15 - 6/14) 170 (6/15 - 7/31) 115 (8/1 - 8/31) 80 (9/1 - 2/29) 115 (3/1 - 4/14)	01/25/2011

(5) Case No. 20CW3173 (Water Division 5) - Application of Ranch Creek 8315 LLC, (previously Kevin Mize)

The Board ratified this Statement of Opposition at its March 2021 meeting. Applicant requested underground water rights, surface right, storage right, and approval of a plan for augmentation. Staff, in cooperation with the Attorney General's Office, has negotiated a settlement to ensure that the CWCB's ISF water rights will not be injured.

The CWCB holds ISF water rights, including the following, in Water Division 5 in the Colorado Headwaters watershed that could have been injured by this application:

Case Number	Stream	Upper Terminus	Lower Terminus	CFS Rate (Dates)	Approp. Date
90CW0308	Fraser River	confl Ranch Creek	confl Crooked Creek	17 (5/15 - 9/15) 11 (9/16 - 5/14)	11/27/1990
90CW0308	Fraser River	confl Crooked Creek	confl Colorado River	30 (5/15 - 9/15) 19 (9/16 - 5/14)	11/27/1990
90CW0306	Ranch Creek	confl Cabin Creek	confl Hurd Creek	7 (5/15 - 9/15) 1.5 (9/16 - 5/14)	11/27/1990
90CW0305	Ranch Creek	confl Hurd Creek	confl Fraser River	5 (9/16 - 5/14) 8 (5/15 - 9/15)	11/27/1990
80CW0446, 80CW0447, 80CW0448	Colorado River	hdgt Windy Gap Project div	confl Blue River	90, 135, 150 (1/1 - 12/31)	07/08/1980

In addition to standard terms regarding measuring devices, accounting and retained jurisdiction, the Applicant has agreed to the following additional protective terms and conditions:

- In the event that the Lower Ponds Ditch is not piped and therefore causes evaporation in the Ranch Creek alluvium, out-of-priority evaporative depletions from the portion of the Lower Ponds Ditch on the Mize Ranch property will be replaced under the plan for augmentation approved in this case and out-of-priority evaporative depletions from the portion on the James Peak Ranch property will be replaced under the plan for augmentation approved in Case No. 20CW3174.
- The Mize Ranch Upper Pond is the only structure decreed in this matter that can make replacements to calls above the confluence of the Fraser and Colorado Rivers, including to the CWCB's instream flow rights on Ranch Creek and the Fraser River. Before the plan for augmentation is operated to allow for out-of-priority depletions from any of the augmented structures, the Mize Ranch Upper Pond must be constructed, filled, and able to make releases to the Mize Ranch Lower Pond and Ranch Creek to replace all out-of-priority depletions from the as-built features on the Mize Ranch property. The active capacity of the Mize Ranch Upper Pond must be sufficient to replace an entire year of out-of-priority depletions from the as-built size of the Mize Ranch Lower Pond and the portion of the Lower Ponds Ditch on the Mize Ranch property. The outlet structure must be lockable and capable of making releases without diminishment in quantity by gravity year-round or as otherwise required by the Water Commissioner or Division Engineer. The Mize Ranch Well may continue to operate under Well Permit No. 320319 for ordinary household purposes within a single-family dwelling without the Mize Ranch Upper Pond being constructed.
- Replacements shall be made at or upstream of the CWCB's instream flow rights decreed in the above-described cases without aggregation at any time that the CWCB is making a call for water from one or more of the subject rights. In addition, Applicant shall not divert the Mize Ranch Pump and Pipeline and Lower Ponds Ditch at times when the flows of Ranch Creek are less than the CWCB's instream flow rates decreed Case No. 90CW306 and shall not divert the Mize Ranch Pump and Pipeline for irrigation when the flows on Ranch Creek, the Fraser River, and the Colorado River are less than the CWCB's instream flow rates decreed in Case No. 90CW305, Case No. 90CW308, and Case Nos. 80CW446, 447, and 448, respectively.

(6) Case No. 20CW3174 (Water Division 5) - Application of James Peak Ranch LLC

The Board ratified this Statement of Opposition at its March 2021 meeting. Applicant requested underground water rights, surface right, storage right, and approval of a plan for augmentation. Staff, in cooperation with the Attorney General's Office, has negotiated a settlement to ensure that the CWCB's ISF water rights will not be injured.

The CWCB holds ISF water rights, including the following, in Water Division 5 in the Colorado headwaters watershed that could be injured by this application:

Case Number	Stream	Upper Terminus	Lower Terminus	CFS Rate (Dates)	Approp. Date
90CW0305	Ranch Creek	confl Hurd Creek	confl Fraser River	5 (9/16 - 5/14) 8 (5/15 - 9/15)	11/27/1990
90CW0306	Ranch Creek	confl Cabin Creek	confl Hurd Creek	7 (5/15 - 9/15) 1.5 (9/16 - 5/14)	11/27/1990
90CW0308	Fraser River	confl Ranch Creek	confl Crooked Creek	17 (5/15 - 9/15) 11 (9/16 - 5/14)	11/27/1990
90CW0308	Fraser River	confl Crooked Creek	confl Colorado River	30 (5/15 - 9/15) 19 (9/16 - 5/14)	11/27/1990
80CW0446, 80CW0447, 80CW0448	Colorado River	hdgt Windy Gap Project div	confl Blue River	90, 135, 150 (1/1- 12/31)	07/08/1980

In addition to standard terms regarding measuring devices, accounting and retained jurisdiction, the Applicant has agreed to the following additional protective terms and conditions:

- In the event that the Lower Ponds Ditch is not piped and therefore causes evaporation in the Ranch Creek alluvium, out-of-priority evaporative depletions from the portion of the Lower Ponds Ditch on the James Peak Ranch property will be replaced under the plan for augmentation approved in this case and out-of-priority evaporative depletions from the portion on the Mize Ranch property will be replaced under the plan for augmentation approved in Case No. 20CW3173.
- The James Peak Ranch Upper Ponds and the James Peak Ranch Augmentation Pond are the only structures decreed in this matter that can make replacements to calls above the confluence of the Fraser and Colorado Rivers, including to the CWCB's instream flow rights on Ranch Creek and the Fraser River. Before the plan for augmentation is operated to allow for out-of-priority depletions from any of the augmented structures, the James Peak Ranch Augmentation Pond and/or James Peak Ranch Upper Ponds must be constructed, filled, and able to make releases to the James Peak Ranch Lower Pond and Ranch Creek to replace all out-of-priority depletions from the as-built features on the James Peak Ranch property. The active capacity of the James Peak Ranch Augmentation Pond and/or James Peak Ranch Upper Ponds must be sufficient to replace an entire year of out-of-priority depletions from the as-built size of the James Peak Ranch Lower Pond and the portion of the Lower Ponds Ditch on the James Peak Ranch property. The outlet structures must be lockable and capable of making releases without diminishment in quantity by gravity year-round or as otherwise required by the Water Commissioner or Division Engineer. The James Peak Ranch Well may continue to operate under Well Permit No. 320302 for ordinary household purposes within a single-family dwelling without the James Peak Ranch Augmentation Pond and/or James Peak Ranch Upper Ponds being constructed.

- Replacements shall be made at or upstream of the CWCB's instream flow rights decreed in the above-described cases without aggregation at any time that the CWCB is making a call for water from one or more of the subject rights. In addition, Applicant shall not divert the James Peak Ranch Pump and Pipeline and Lower Pond Ditch at times when the flows of Ranch Creek are less than the CWCB's instream flow rates decreed Case No. 90CW306 and shall not divert the James Peak Ranch Pump and Pipeline for irrigation when the flows on Ranch Creek, the Fraser River, and the Colorado River are less than the CWCB's instream flow rates decreed in Case No. 90CW305, Case No. 90CW308, and Case Nos. 80CW446, 447, and 448, respectively.

(7) Case No. 21CW0005 (Water Division 5) - Application of Summit Land Co.

The Board ratified this Statement of Opposition at its January 2022 meeting. Applicant sought a change of water right. In this case, Applicant filed to withdraw its case. The Court granted Applicant's Motion to Dismiss without prejudice.

The CWCB holds ISF water rights, including the following, in Water Division 5 in the Blue watershed that could have been injured by this application:

Case Number	Stream	Upper Terminus	Lower Terminus	CFS Rate (Dates)	Approp. Date
87CW0297	Blue River	confl Boulder Creek	confl Slate Creek	70 (11/1 - 2/29) 78 (3/1 - 3/31) 90 (4/1 - 4/30) 125 (5/1 - 8/31) 90 (9/1 - 10/31)	10/02/1987
87CW0298	Blue River	confl Slate Creek	inlet Green Mtn Res @ Doig Gulch	90 (10/1 - 11/30) 85 (12/1 - 2/29) 125 (5/1 - 9/30) 90 (3/1 - 4/30)	10/02/1987
W-3646 (1977)	Boulder Creek	headwaters in vicinity	confl Blue River	3 (10/1 - 4/30) 6 (5/1 - 9/30)	01/19/1977

B. LETTERS IN LIEU

The following cases were resolved by Staff through negotiated letters in lieu of filing water court Statements of Opposition. This method of settlement is preferred when facts and time allow such negotiation before the Statement of Opposition period ends. In each case, CWCB staff will continue to monitor the proposed rulings and decrees. In each case, Applicant has agreed to not oppose a motion to intervene if the agreed upon terms are not included. The following were negotiated to resolution:

(1) Case No. 22CW3035 (Water Division 5) - Application of Ajacks LLC

During the April 2022 Water Court Resume Review, CWCB staff identified concerns regarding potential injury to CWCB's ISF water rights decreed in Case Nos. W-2946 (1976) on Conundrum Creek; W-2947 (1976) on Castle Creek; and, W-2948 (1976), 85CW0639 and 85CW0646 on the Roaring Fork River. This

case was resolved with CWCB by a letter agreement, dated June 30, 2022, by which CWCB agreed not to file a Statement of Opposition, provided Applicant incorporates the following terms and conditions into any draft and final decrees and Applicant agrees to not oppose a motion to intervene by CWCB if such terms and conditions are not included.

1. The augmentation tank shall be a non-evaporative type of tank.
2. Applicant shall ensure that the tank is full prior to May 1st each year to ensure sufficient augmentation supplies exist to replace out-of-priority delayed depletions to a local call upstream of the confluence of the Roaring Fork and Fryingpan Rivers.

(2) Case No. 22CW3014 (Water Division 7) - Application of Town of Rico

During the March 2022 Water Court Resume Review, CWCB staff identified concerns regarding potential injury to CWCB's ISF water rights decreed in Case Nos. 83CW0088 on Silver Creek and 84CW0284 on the Dolores River. This case was resolved with CWCB by a letter agreement, dated May 24, 2022, by which CWCB agreed not to file a Statement of Opposition, provided Applicant incorporates the following terms and conditions into any draft and final decrees and Applicant agrees to not oppose a motion to intervene by CWCB if such terms and conditions are not included.

- Applicant has agreed with the Colorado Water Conservation Board (CWCB) that diversions of the Original Rico Flume water right at the North Rico Well Field shall be curtailed when the CWCB instream flow right on the Dolores River, decreed in Case No. 84CW284 for 20 cfs, is not met and is being administered in the reach of the Dolores River between the alternate point of diversion and the confluence with Silver Creek. At such time, the Town of Rico may continue to divert 0.187 cfs attributable to the North Rico Well Field Production Well #1, as decreed in Case No. 06CW110 (and determined as absolute in Case No. 16CW3021).

(3) Case No. 22CW3013 (Water Division 7) - Application of Martin J. Schmidt

During the March 2022 Water Court Resume Review, CWCB staff identified concerns regarding potential injury to CWCB's ISF water rights decreed in Case Nos. 84CW0293 on Dolores River. This case was resolved with CWCB by a letter agreement, dated May 19, 2022, by which CWCB agreed not to file a Statement of Opposition, provided Applicant incorporates the following terms and conditions into any draft and final decrees and Applicant agrees to not oppose a motion to intervene by CWCB if such terms and conditions are not included.

- Applicant will fill the Schmidt Augmentation Pond in priority or under the protection of the water supply contract with the DWCD each spring and will release water back to the Dolores River as necessary to offset out-of-priority depletions during times of a valid downstream call by the CWCB. However, the pond shall not be filled by exchange at times when the CWCB's instream flow water right on the Dolores River, decreed in Case No. 84CW293, is unmet and being administered in the exchange reach. At such time, diversions into the pond shall be curtailed.

(4) Case No. 22CW3015 (Water Division 7) - Application of Homestake Little Cora LLC

During the March 2022 Water Court Resume Review, CWCB staff identified concerns regarding potential injury to CWCB's ISF water rights decreed in Case Nos. 84CW0284 on the Dolores River. This case was resolved with CWCB by a letter agreement, dated May 20, 2022, by which CWCB agreed not to file a Statement of Opposition, provided Applicant incorporates the following terms and conditions into any draft and final decrees and Applicant agrees to not oppose a motion to intervene by CWCB if such terms and conditions are not included.

- Applicant will fill the Homestake Augmentation Pond in priority each spring and will release water back to the Dolores River as necessary to offset out-of-priority depletions during times of a valid downstream call by the CWCB. The pond shall not be filled by exchange at times when any of the CWCB's ISF water rights on the Dolores River, decreed in Case Nos. 84CW284, 84CW289, and 84CW293, are unmet and being administered in the exchange reach. At such time, diversions into the pond shall be curtailed.



COLORADO

**Colorado Water
Conservation Board**

Department of Natural Resources

1313 Sherman Street
Denver, CO 80203

P (303) 866-3441
F (303) 866-4474

Jared Polis, Governor

Dan Gibbs, DNR Executive Director

Rebecca Mitchell, CWCB Director

TO: Colorado Water Conservation Board Members

FROM: Kirk Russell, P.E., Finance Section Chief

Board Meeting: July 20-21, 2022 Board Meeting

Directors Report: Water Project Loans
Interest Rates

Introduction

The CWCB establishes interest rates bi-monthly for the Water Project Loan Program (per Financial Policy #7).

The current rates for a 30-year term are as follows:

- 1.55% - Agricultural
- 2.20% - Low-income Municipal
- 2.50% - Middle-income Municipal
- 2.80% - High-income Municipal
- 6.00% - Commercial
- 2.00% - Hydroelectric

The standard loan term is 30 years. Rates are reduced by 0.25% for 20-year loans, and by 0.55% for 10-year loans. Rates are increased by 0.25% for 40-year loans.

The rates can also be found on the CWCB web site under the “Loans and Grants” tab. These rates will be applicable for loans presented at this Board meeting.





COLORADO

**Colorado Water
Conservation Board**

Department of Natural Resources

1313 Sherman Street, Room 718
Denver, CO 80203

P (303) 866-3441
F (303) 866-4474

Jared Polis, Governor

Dan Gibbs, DNR Executive Director

Rebecca Mitchell, CWCB Director

TO: Colorado Water Conservation Board Members

FROM: Matthew Stearns, P.E., Project Development

DATE: July 20-21, 2022 Board Meeting

DIRECTORS REPORT: Water Project Loan Program
Prequalified Project List and Loan Prospect Summary

The Finance Section compiles a list of prequalified projects for the Water Project Loan Program. In order to be included on this list, potential borrowers must submit a Loan Application and three years of financial statements to the CWCB staff. In addition, Borrowers requesting to be placed on the Prequalification Project List have a defined project, have performed preliminary engineering, and have a reasonable estimate of the project costs.

Projects on this list fit the initial criteria of the Water Project Loan Program; however, the list does not constitute loan approval. In order to receive a loan, borrowers must additionally submit a completed Loan Feasibility Study for review by CWCB staff. Staff will then prepare a recommendation to the Board for approval at a future CWCB meeting. Projects will remain on this list for one year from the date of the application or until Board approval of a loan.



Prequalified Project List

BORROWER	PROJECT NAME	APPLICATION DATE	BASIN	PROJECT DESCRIPTION	PROJECT COST/LOAN AMOUNT
Previously Approved Applications					
	No prequalified projects at this time				
Total					\$ -



The Finance Section also compiles a list of potential borrowers/projects for the Water Project Loan Program. This list represents borrowers that have contacted the CWCB about a potential need for funding but have not submitted a loan application and loan feasibility study. Projects are also identified if they have a Health/Safety (*), Economic Impact (†), or Federal Match (‡) component.

BORROWER	PROJECT NAME	POTENTIAL LOAN AMOUNT
South Platte		
NISP Participants	NISP	\$750,000,000
Woods Lake Mutual Ditch Company	Culvert Replacement	\$150,000
Town of Kersey	Water Line Project	TBD
Riverside Reservoir and Land Company	Ditch Rehabilitation	\$250,000
Town of Bennett	Raw Water Tank	\$500,000
Evergreen Metro District	Evergreen Dam Enlargement	TBD
Left Hand Water District	Dry Creek Reservoir	TBD
Shawnee Water Consumers Association	Reservoir Rehabilitation	\$200,000
Boulder and White Rock Ditch & Res. Co.	Reservoir Dredging	TBD
Western Mutual Ditch Company	Reservoir Dredging	TBD
Bergen Ditch and Reservoir Company (*)	Reservoir Rehabilitation	TBD
Louviers Water and Sanitation District	Regional Connection	TBD
City of Fort Collins	Irrigation Ditch Piping	\$20,000,000
City of Fort Collins	Halligan Reservoir Enlargement	\$120,000,000
Northern Colorado WCD	Windy Gap FIRMing (increase)	\$40,000,000
SPROWG Participants	SPROWG	\$1,800,000,000
City of Milliken (*)	Hillsboro Dam Rehabilitation	\$15,000,000
Colorado Parks and Wildlife (*)	Tarryall Dam Rehabilitation	\$5,000,000
Standley Lake Operating Committee	Reservoir Expansion	TBD
Switzerland Park HOA	Reservoir Rehabilitation	\$300,000
Danna Ortiz	Knouth Reservoir Rehabilitation	\$3,000,000
Loup Reservoir Company	Loup Reservoir Rehabilitation	TBD
Smith and Emmons Ditch Company	Headgate Rehabilitation	\$176,000
Middle South Platte Reservoir Company	New Reservoir	TBD
Arthur Irrigation Company	Ditch Rehabilitation	TBD
Handy Ditch Company	Welch Reservoir Rehabilitation	\$1,000,000
Castle Pines Metropolitan District	Chatfield Water Purchase	\$500,000
Glacier Lake Property Owners	Glacier Lake Outlet Rehabilitation	TBD
Central, City of	Raw Water Pipeline	TBD
Denver, City of	Floodplain Improvement	TBD
Consolidated Mutual Water Company (*)	Reservoir Rehabilitation	TBD
Ogilvy Irrigating and Land Company	Loloff Reservoir Improvements	\$5,200,000
Wadley Farms 3 HOA	Reservoir Rehabilitation	TBD
Loveland Lake and Ditch Company	Reservoir Rehabilitation	TBD
Keenesburg, Town of	Water Rights Purchase	TBD
Smith and Emmons Ditch Company	Diversion Structure Repair	\$180,000
Platte Valley Irrigation Company	New Reservoir	\$3,000,000
North Poudre Irrigation Company	Reservoir Enlargement	\$6,500,000
Subtotal		\$2,770,956,000



BORROWER	PROJECT NAME	POTENTIAL LOAN AMOUNT
Arkansas		
Town of Manitou Springs	Raw Water Pipeline	\$3,000,000
City of Woodland Park	Storage Project	\$1,000,000
Fort Lyon Canal Company	Adobe Creek Enlargement	\$8,000,000
Deweese Ditch and Reservoir Co. (+)	Reservoir Enlargement	TBD
Holbrook Ditch Company	Reservoir Enlargement	TBD
Lake County	New Reservoir	TBD
Catlin Canal Company	Canal System Improvement	\$1,500,000
Lower Arkansas WCD	New Storage Account	TBD
Donala Water and Sanitation District	Ditch Construction	TBD
Mesa McKenna Mutual Ditch Company	Ditch Piping Project	TBD
Town of Avondale (*)	New Well	TBD
Round Mountain Water & Sanitation	New Reservoir	TBD
Ordway, Town of	Reservoir Rehabilitation	TBD
Cross Creek Metropolitan District	Hale Reservoir Rehabilitation	\$3,000,000
Twin Lakes Reservoir and Canal Company	Dam and Tunnel Rehabilitation	\$5,500,000
Colorado City (*)	Beckwith Dam Rehabilitation	\$8,000,000
Oxford Ditch Company	Flume Rehabilitation	\$1,800,000
Fort Lyons Canal Company (+)	Diversion Structure Repair	\$500,000
Aguilar, Town of (‡)	New Augmentation Reservoir	TBD
Huerfano County	Water Rights Purchase	\$1,200,000
Subtotal		\$33,500,000
San Miguel/Juan		
Town of Bayfield	Ditch Piping Project	\$500,000
Redmesa Reservoir and Ditch Co. (*)	Redmesa Reservoir Enlargement	\$11,500,000
City of Cortez	Distribution System (Loss Prevention)	\$10,000,000
Webber Ditch Company (‡)	Ditch Piping Project	TBD
Pagosa Area Water and Sanitation Dist. (*)	Raw Water Pipeline Rehabilitation	TBD
Town of Naturita	Water Meters	TBD
Farmers Water Development Company	Reservoir Rehabilitation	TBD
Lone Cone Ditch and Reservoir Company	Reservoir Rehabilitation	TBD
Sellers McClane Reservoir and Ditch Co.	Reservoir Rehabilitation	TBD
Subtotal		\$22,000,000
Colorado		
Orchard Mesa Irrigation District	Lateral Piping	\$300,000
Silt Water Conservancy District	Harvey Gap Reservoir	\$300,000
Middle Ditch	Ditch Piping Project	TBD
New Multa Trina Ditch Company (‡)	Ditch Piping Project	TBD
Gunther Covers	Christenson Dam	TBD
Town of Minturn	New Well Field	\$5,220,000
Flannery Water Company, LLC	Reservoir Rehabilitation	TBD
Morrisania Water Supply Company	Headgate Repair and Ditch Piping	\$150,000
Fruita, City of	Reservoir Rehabilitation	TBD
Dave Phelps	King Dam Rehabilitation	TBD
Royal Elk Ranch	Ditch Rehabilitation	\$2,000,000
Subtotal		\$7,970,000



BORROWER	PROJECT NAME	POTENTIAL LOAN AMOUNT
Gunnison		
Gunnison County Electric	Taylor Park Hydro	\$1,000,000
Duke Ditch Company	Ditch Piping Project	\$400,000
Bostwick Park Water Conservancy District	Dam Construction	TBD
Kendall Reservoir Company	Reservoir Rehabilitation	\$140,000
Orchard City Irrigation District (‡)	Fruit Growers Reservoir Rehab	\$240,000
Ouray, City of	Water Supply Pipeline	\$750,000
Grand Mesa Water Users Association	Reservoir Rehabilitation	\$600,000
Crested Butte, Town of	Dam Outlet Rehabilitation	TBD
Olathe, Town of	Water Meter Replacement	TBD
Lone Cabin Ditch Company	Ditch Rehabilitation	TBD
Uncompahgre Valley Water Users Assoc.	Taylor Park Hydro	\$1,500,000
Subtotal		\$4,630,000
North Platte		
Colorado Parks and Wildlife (*)	North Michigan Creek Reservoir	\$6,000,000
Spicer Ranches, LTD	Reservoir Rehabilitation	TBD
Walden, Town	New Well	TBD
Subtotal		\$6,000,000
Rio Grande		
Manassa Land & Irrigation Co.	Ditch Rehabilitation	\$6,000,000
Baca Grande WSD	Water Rights Purchase	\$1,000,000
Sanchez Ditch and Reservoir Co.	Dam Rehabilitation	\$4,000,000
Rio Grande WCD - Subdistrict #1	Water Rights Purchase	\$5,000,000
San Luis Valley WCD (†)	Shaw Reservoir Purchase	TBD
Colorado Parks and Wildlife	Alberta Park Dam Rehabilitation	\$4,000,000
La Jara, Town of	System Rehabilitation	TBD
Crestone, Town of	Water Rights Purchase	\$200,000
Rio Grande WCD - Subdistrict #4	Water Rights Purchase	\$1,000,000
Rio Grande WCD - Subdistrict #5	Water Rights Purchase	\$2,800,000
Rio Grande WCD - Subdistrict #3	Water Rights Purchase	\$2,300,000
Trinchera Irrigation Company	Water Rights Purchase	\$2,300,000
San Luis Valley WCD	Water Rights Purchase	\$500,000
Rio Grande WCD	Water Rights Purchase	\$3,000,000
Subtotal		\$32,100,000
Yampa		
Town of Oak Creek (*)	Reservoir Rehabilitation	\$5,600,000
Rio Blanco WCD	Wolf Creek Reservoir	\$100,000,000
Bear River Reservoir Company	Stillwater #1 Dam Rehabilitation	TBD
Marc Etchart	Procter Reservoir Rehabilitation	TBD
Rio Blanco Water Conservancy District	Taylor Dam Penstock Repair	\$3,000,000
Subtotal		\$108,600,000





COLORADO

Colorado Water Conservation Board

Department of Natural Resources

1313 Sherman Street
Denver, CO 80203

P (303) 866-3441
F (303) 866-4474

Jared Polis, Governor

Dan Gibbs, DNR Executive Director

Rebecca Mitchell, Director

To: Colorado Water Conservation Board Members
From: Kirk Russell, P.E., Finance Section Chief
Jessica Halvorsen, Program Assistant
Board Meeting: July 20-21, 2022 Board Meeting
Directors Report: Water Project Loan Program, Design & Construction Status Report

The CWCB Loan Program has Substantially Completed (19) projects in Fiscal Year 2021/2022 as shown in the Table. There are currently (42) projects authorized to receive loan funding totaling \$328M. There are (38) projects currently under contract and in the Design/Construction phase totaling \$222M. The attached spreadsheet summarizes the status of all loans. A detailed description about each project is provided on the CWCB website under Water Project Loan Program. cwcb.colorado.gov/loans-grants/water-project-loan-program

	Borrower	Project	County	Loan Amount	Complete
1	North Sterling Irrigation District	Outlet Canal Automation Phase II Project	Logan	\$395,920	7/1/21
2	Redlands Water and Power Co.	Roller Gate Replacement	Mesa	\$404,000	8/1/21
3	Pueblo Conservancy District	Arkansas River & Wildhorse Creek Levees Project	Pueblo	\$23,230,000	9/1/21
4	Julesburg Irrigation District	Diversion Structure Rehabilitation	Sedgwick	\$1,298,207	9/1/21
5	San Luis Valley Irrigation District	Rio Grande Res Rehab - Phase 2	Hinsdale /Rio Grande	\$15,000,000	10/1/21(a)
6	Central Colorado WCD	Chatfield Reallocation Project Phase II Mitigation	Douglas Arapahoe / Douglas /Park /	\$6,670,684	10/1/21 (b)
7	Castle Pines North MD	Chatfield Reallocation Project Phase II Mitigation	Arapahoe / Douglas /Park /	\$1,430,032	10/1/21(c)
8	Centennial WSD	Chatfield Reallocation Project Phase II Mitigation	Arapahoe / Douglas /Park /	\$10,400,368	11/1/21 (d)
9	Centennial WSD	Chatfield Reallocation Project - First Cost of Storage	Arapahoe / Douglas /Park /	\$4,978,290	11/1/21
10	Rural Ditch Company	Diversion Structure Improvement	Weld	\$662,483	12/1/21
11	Central Colorado WSD	Walker Recharge	Weld	\$2,272,500	1/1/22
12	GMS of CCWCD	Walker Recharge	Weld	\$9,847,500	1/1/22
13	WAS of CCWCD	Walker Recharge	Weld	\$3,030,000	1/1/22
14	Huerfano County WCD	Regional Augmentation Project	Huerfano	\$2,666,400	2/1/22 (e)
15	Upper Platte & Beaver Canal Co.	Diversion Structure Replacement	Morgan	\$4,078,215	2/1/22
16	Cedar Mesa Ditch Company	Lower Cedar Mesa Ditch Piping	Delta	\$468,717	6/1/22
17	Grand Mesa Water Conservancy District	Peak Res. & Blanche Park Res. Rehabilitation	Delta	\$466,620	6/1/22 (f)
18	Left Hand Ditch Company	Allen's Lake Filler Canal Improvements	Boulder	\$947,709	6/1/22
19	The Tunnel Water Company	Rawah Ditch Tunnel Rehabilitatio	Larimer	\$1,198,066	6/1/22
			Total	\$89,545,711	

Fiscal Year 2021 - 2022 has added and preserved 63,495 acre-feet of reservoir storage; (a) 51,113; (b) 4,274; (c) 1,006; (d) 6,922; (e) 25; (f) 155





Outlet Canal Automation Phase II Project

North Sterling Irrigation District
Substantially Complete July 1, 2021



A sensor on a lateral ditch Parshall Flume that can report the flow rate into the ditch (left) and an automated headgate that will receive data from the sensor and adjust the gate to a predetermined flow rate (right)

Project Description

The North Sterling Irrigation District was created in 1907 by the Board of County Commissioners and currently serves 122 landowners with more than 40,000 acres east of the North Sterling Reservoir. Following on the successful Phase I which installed 25 automated on-farm headgates, this project automated 42 additional headgates. Automation included solar power, a controller, an actuator to operate the headgate, a radar sensor at each Parshall flume, and telemetry for data access and remote control. This new equipment saves time, labor, and water, and may reduce the size of the regulating reservoir in the future. Installation began in the early spring and was nearly all complete by the time water was turned into the Outlet Canal in April.

P R O J E C T D A T A		
<i>Sponsor:</i> North Sterling Irrigation District	<i>County:</i> Logan	<i>Water Source:</i> South Platte River
<i>Type of Project:</i> Ditch Systems Improvement		<i>Board Approval Date:</i> January 2021
<i>Loan Terms: (Original) \$395,920 @ 0.90% (Final) \$395,920 @ 0.90%</i>		
<i>Design Engineer:</i> Hydrologic Consultants, Inc		
<i>Contractor:</i> Hydrologic Consultants, Inc		



COLORADO
Colorado Water
Conservation Board
Department of Natural Resources

Roller Gate Replacement Project

Redlands Water and Power Company
Substantially Complete August 1, 2021



Right: Installation of one of the new gates into the
Gunnison River Diversion Structure
Left: Grading of the Power Canal

Project Description

The Redlands Water and Power Company provides irrigation water and power to 1,970 acres of the Redlands area in the Grand Valley. Shareholders are predominantly located on bench lands above the Colorado and Gunnison Rivers, requiring most of the irrigation water to be pumped uphill to them. The Company diverts approximately 800 cfs of water from the Gunnison River to its pumping plant and hydroelectric facility via the Redlands Power Canal. Four existing roller gates controlled the flow at the diversion structure. These gates were approximately 80-years-old and were significantly corroded. The project include the design, fabrication, and installation of new roller gates, with the loan covering approximately 78% of the project costs.

P R O J E C T D A T A		
<i>Sponsor:</i> Redlands Water and Power Company	<i>County:</i> Mesa	<i>Water Source:</i> Gunnison River
<i>Type of Project:</i> Diversion Structure Rehab		<i>Board Approval Date:</i> September 2020
<i>Loan Terms: (Original) \$404,000 @ 1.50% (Final) \$404,000 @ 1.50%</i>		
<i>Design Engineer:</i> SGM		
<i>Contractor:</i> Mountain Valley Contracting		



Wildhorse Creek Levee



Arkansas River Levee



Arkansas River Levee



Project Description

The Pueblo Conservancy District (District) was formed in response to the 1921 flood in Pueblo. Its primary function is flood protection within its designated boundaries. In 2006, the District was advised that unless the Arkansas River and Wildhorse Creek levees were accredited by the Federal Emergency Management Agency (FEMA), the City would lose their protected status which ensures that flood insurance can be provided at affordable rates. The City and District has not forgotten the victims of the catastrophic Great Flood in 1921. A Dedication ceremony was held to honor the 1921 flood victims, the City and the surrounding communities for the long road of this multiple phased construction project spanning about ten years.

The District completed the reconstruction and stabilization of approximately 13,000 lineal feet of the Arkansas River Levee, and approximately 3,000 feet of Wildhorse Creek Levee has been constructed and complies with FEMA standards. FEMA required levee certification documentation by 44 CFR 65.10 and EM-1110-2-1913. The District provided these documents to FEMA on June 3, 2021. The District has not received any other correspondence or requests for information from FEMA.

P R O J E C T D A T A

<i>Sponsor:</i> Pueblo Conservancy District	<i>County:</i> Pueblo	<i>Water Source:</i> Arkansas River
<i>Type of Project:</i> Flood Control	<i>Board Approval Date:</i> September 2017	
<i>Terms of Loan:</i> 2.45% for 30 years	<i>(Original)</i> \$23,230,000	<i>(Final)</i> \$23,230,000
<i>Design Engineer:</i> NorthStar Engineering and Surveying, Inc.		
<i>Contractor:</i> K.R.Swerdfeger Construction, Inc. and ASI Construction, LLC		



COLORADO

Colorado Water
Conservation Board

Department of Natural Resources

Diversion Structure Rehabilitation

Julesburg Irrigation District

Substantially Complete September 1, 2021



Project Description

The Julesburg Irrigation District (District) operates a South Platte River diversion structure and the Petersen Ditch headgate. They also operate other ditches and reservoirs for the benefit of shareholders by providing direct flow irrigation water. The District service area is comprised of approximately 19,129 acres. The District's diversions from the South Platte through the Petersen Ditch are normally 164 cfs from the South Platte River providing water for 8,925 acres. The diversion of water is accomplished with a construction diversion dam and a ditch regulating head gates structure. The diversion dam original diversion dam was built in 1956. It was 320 feet wide. The District completely rebuilt the structure on the original footprint. Construction largely took place one year after the original plan during the winter of 2020/21. Most of the work was completed for the 2021 irrigation season and final punchlist items were completed in the fall of 2021.

P R O J E C T D A T A		
<i>Sponsor:</i> Julesburg Irrigation District	<i>County:</i> Sedgwick	<i>Water Source:</i> South Platte
<i>Type of Loan:</i> Diversion Structure Rehabilitation		<i>Board Approval Date:</i> May 2018
<i>Terms of Loan:</i> 30 years @ 1.70% (Original) \$2,886,580.00 (Final) \$1,298,207.88		
<i>Design Engineer:</i> Harris Engineering Consultants		
<i>Contractor:</i> Concrete Specialties and Utilities Construction		



Tunnel Rehabilitation

New Gate House



Piping to New Gate House



Project Description

The dam was originally constructed in 1914 and almost immediately sustained damage due to vibration and erosion from the outlet works. The dam has been modified on several occasions and is currently a height of 111 feet (51,113 AF). The outlet gate structure was repaired on multiple occasions to correct problems with vibrations caused by pressures and release rates. The Reservoir's outlet has long been a limiting factor in the administration of the Rio Grande. This Project will provide operational efficiencies by better managing the timing of water stored and released from the Reservoir. This will result in improved stream health and utilization of Rio Grande water by the District, the State of Colorado, and the many other water users in the basin.

This project included a new intake structure and guard gates; the lining of the intake tunnel, new outlet gates in a new gate house downstream of the dam; a 70ft reinforced lined bypass tunnel around the abandoned in-place old slide gates. The existing outlet tunnel was lined with a ten-foot diameter steel pipe extending the outlet 150ft to the twin 84-inch fixed cone valves and a 36-inch low flow valve.

The total Project cost for Phase 1 & 2 was \$30,000,000. The District received a total of \$15,000,000 in state grant funding which included seepage control improvements, a Forest Service land exchange, Phase 2 final design and 40% of the Phase 2 construction costs.

PROJECT DATA

<i>Sponsor:</i> San Luis Valley Irrigation District	<i>County:</i> Hinsdale	<i>Water Source:</i> Rio Grande
<i>Type of Project:</i> Reservoir Rehabilitation	<i>Board Approval Date:</i> November 2011	
<i>Terms of Loan:</i> 2.45% for 30 years	<i>(Original)</i> \$23,230,000	<i>(Final)</i> \$23,230,000
<i>Design Engineer:</i> Deere & Ault Consultants, DiNatale Water Consultants		
<i>Contractor:</i> Moltz Civil, LLC		



COLORADO

Colorado Water
Conservancy Board

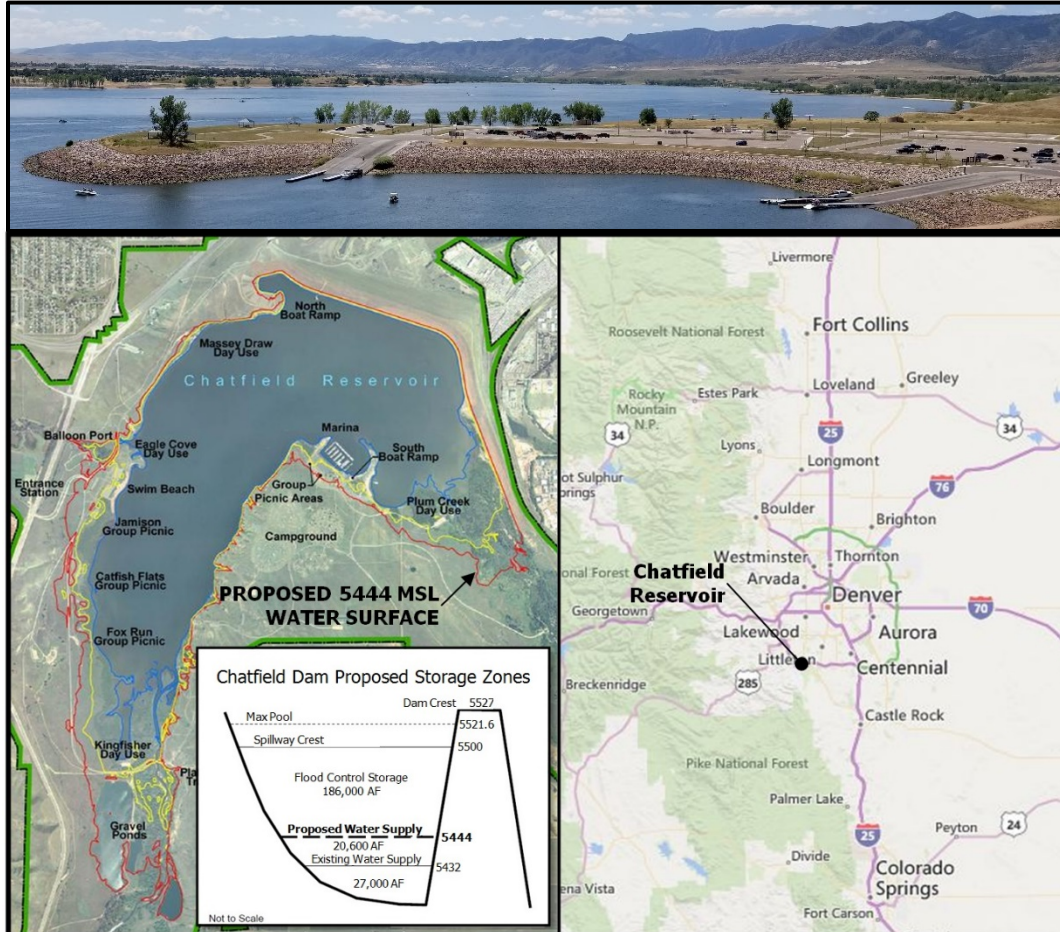
Department of Natural Resources

Chatfield Reallocation Project

Phase 2 Mitigation

Central Colorado Water Conservancy District

Substantially Complete October 1, 2021



Project Description

The District is located in the South Platte River basin between Denver and Fort Morgan including Beebe Draw, and the lower portions of Box Elder Creek and Lost Creek drainages. Approximately 210,000 acres of irrigated agricultural lands are served by the District. The Chatfield Reallocation Project will reallocate a total of 20,600 AF of storage space from the flood control pool into a multipurpose pool. The District is participating in the Reallocation Project by purchasing 4,274 AF of the reallocated storage and is proportionally responsible for all Reallocation Project cost.

The current cost estimate for the Reallocation Project is \$171 million. The District was approved for a total of \$29,999,929 in CWCB loans for the Reallocation Project which were split into three loan contracts for Phase 1, Phase 2, and First Cost of Storage. Construction of the Reallocation Project is substantially complete. The Phase 2 loan contract funded the District's portion of the Mitigation costs of the Project.

P R O J E C T D A T A		
<i>Sponsor:</i> Central Colorado Water Conservancy District	<i>County:</i> Douglas	<i>Water Source:</i> South Platte River & Plum Creek
<i>Type of Loan:</i> Reservoir Storage		<i>Board Approval Date:</i> May 2014
<i>Loan Terms:</i> 1.75% for 30 years (Original) \$7,000,310 (Final) \$6,670,684.29		
<i>Design Engineer:</i> Various		
<i>Contractor:</i> Various		



COLORADO

Colorado Water
Conservation Board

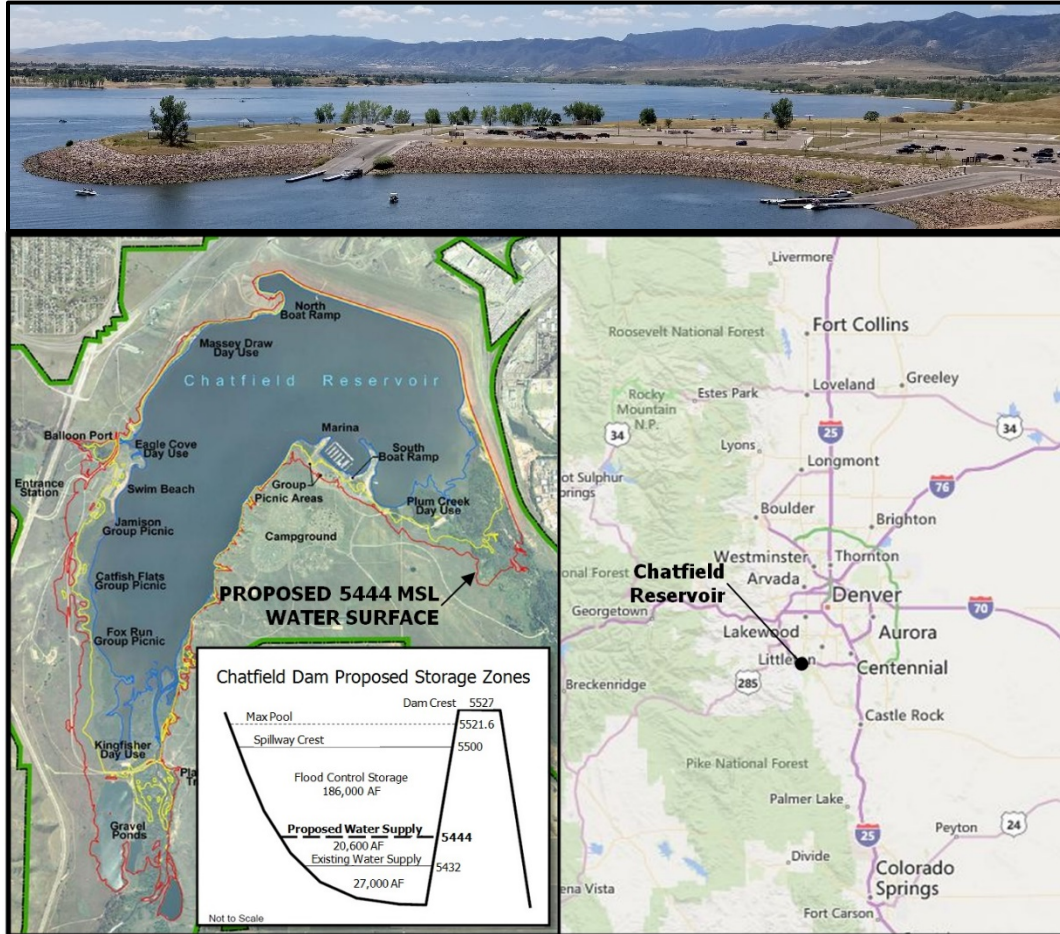
Department of Natural Resources

Chatfield Reallocation Project

Phase 2 Mitigation

Castle Pines North Metropolitan District

Substantially Complete October 1, 2021



Project Description

The District provides water and wastewater services to the residents and businesses in the City of Castle Pines in Douglas County. The District is participating in the Chatfield Reallocation Project in order to increase the permanence and reliability of its water supply. The Chatfield Reallocation Project will reallocate a total of 20,600 AF of storage space from the flood control pool into a multipurpose pool. The District is participating in the Reallocation Project by purchasing 1,006 AF of the reallocated storage and is proportionally responsible for all Reallocation Project cost.

The current cost estimate for the Reallocation Project is \$171 million. The District was approved for a total of \$7,773,364 in CWCB loans for the Reallocation Project which were split into three loan contracts for Phase 1, Phase 2, and First Cost of Storage. Construction of the Reallocation Project is substantially complete. The Phase 2 loan contract funded the District's portion of the Mitigation costs of the Project.

P R O J E C T D A T A		
<i>Sponsor:</i> Castle Pines North Metropolitan District	<i>County:</i> Douglas	<i>Water Source:</i> South Platte River & Plum Creek
<i>Type of Loan:</i> Reservoir Storage		<i>Board Approval Date:</i> May 2014
<i>Loan Terms:</i> 3.00% for 30 years (Original) \$1,587,720.00 (Final) \$1,430,032.19		
<i>Design Engineer:</i> Various		
<i>Contractor:</i> Various		



COLORADO

Colorado Water Conservation Board

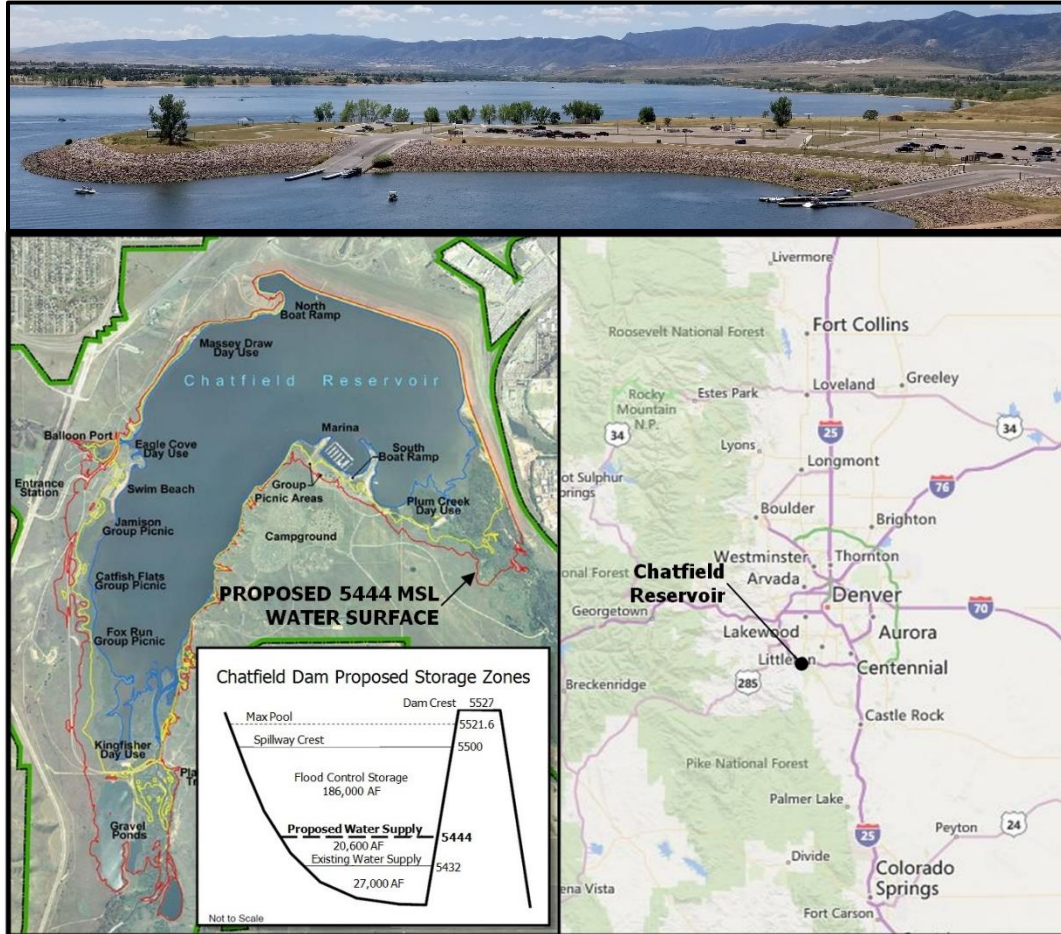
Department of Natural Resources

Chatfield Reallocation Project

Phase 2 Mitigation

Centennial Water & Sanitation District

Substantially Complete November 1, 2021



Project Description

The District provides water and wastewater services to the residents and businesses of Highlands Ranch in Douglas County. The District is participating in the Chatfield Reallocation Project in order to increase the permanence and reliability of its water supply. The Chatfield Reallocation Project will reallocate a total of 20,600 AF of storage space from the flood control pool into a multipurpose pool. The District is participating in the Reallocation Project by purchasing 6,922 AF of the reallocated storage and is proportionally responsible for all Reallocation Project cost.

The current cost estimate for the Reallocation Project is \$171 million. The District has been approved for a total of \$53,486,267 in CWCB loans for the Reallocation Project which are split into three loan contracts for Phase 1, Phase 2, and First Cost of Storage. Construction of the Reallocation Project is substantially complete. The Phase 2 loan contract funded the District's portion of the Mitigation costs of the Project.

P R O J E C T D A T A		
<i>Sponsor:</i> Centennial Water & Sanitation District	<i>County:</i> Douglas	<i>Water Source:</i> South Platte River & Plum Creek
<i>Type of Loan:</i> Reservoir Storage		<i>Board Approval Date:</i> May 2014
<i>Loan Terms:</i> 3.00% for 30 years (Original) \$10,934,260 (Final) \$10,400,368.08		
<i>Design Engineer:</i> Various		
<i>Contractor:</i> Various		



COLORADO

Colorado Water
Conservation Board

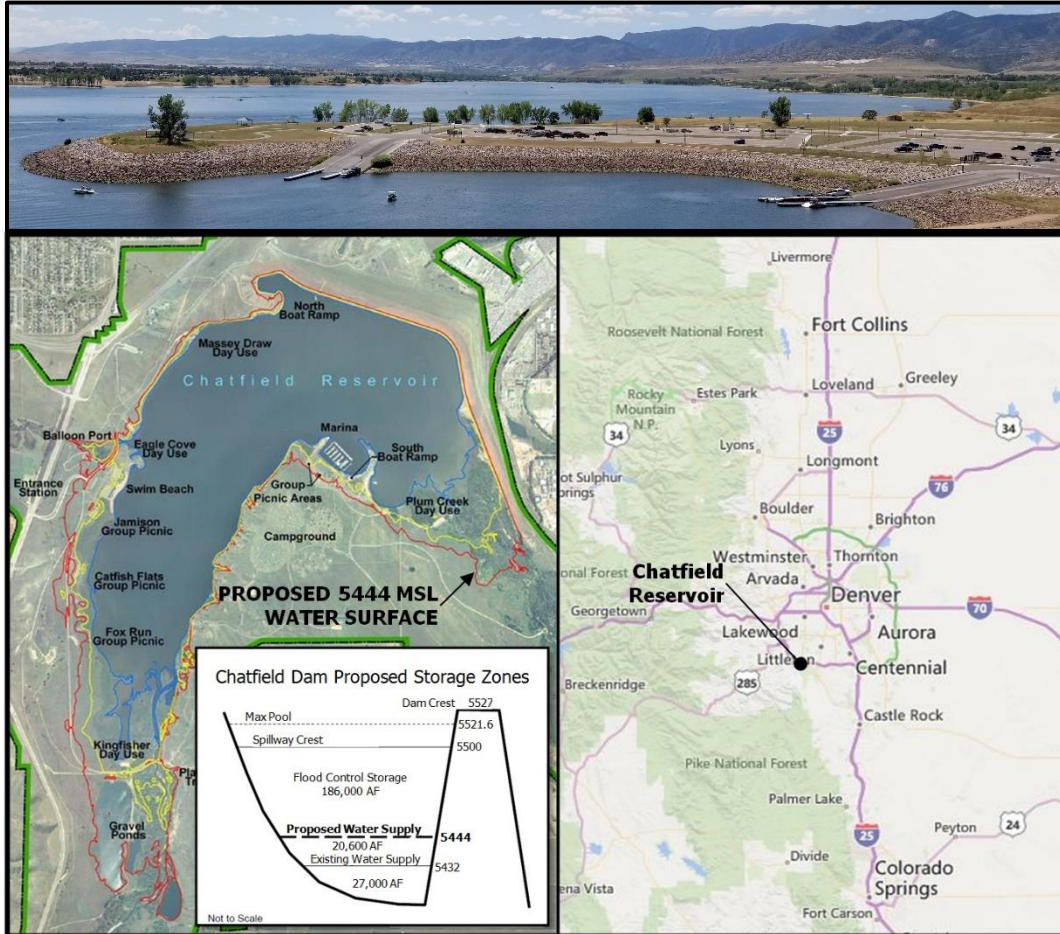
Department of Natural Resources

Chatfield Reallocation Project

First Cost of Storage

Centennial Water & Sanitation District

Substantially Complete November 1, 2021



Project Description

The District provides water and wastewater services to the residents and businesses of Highlands Ranch in Douglas County. The District is participating in the Chatfield Reallocation Project in order to increase the permanence and reliability of its water supply. The Chatfield Reallocation Project will reallocate a total of 20,600 AF of storage space from the flood control pool into a multipurpose pool. The District is participating in the Reallocation Project by purchasing 6,922 AF of the reallocated storage and is proportionally responsible for all Reallocation Project cost.

The current cost estimate for the Reallocation Project is \$171 million. The District has been approved for a total of \$53,486,267 in CWCB loans for the Reallocation Project which are split into three loan contracts for Phase 1, Phase 2, and First Cost of Storage. This Storage loan contract funded the District's proportional obligation of the cost associated with the "First Cost of Storage" as defined in the agreement between the Dept. of Army and the Colorado Dept. of Natural Resources for the Reallocation Project dated October 9, 2014.

P R O J E C T D A T A		
<i>Sponsor:</i> Centennial Water & Sanitation District	<i>County:</i> Douglas	<i>Water Source:</i> South Platte River & Plum Creek
<i>Type of Loan:</i> Reservoir Storage		<i>Board Approval Date:</i> May 2014
<i>Loan Terms:</i> 3.00% for 30 years (Original) \$4,978,290 (Final) \$4,978,290		
<i>Design Engineer:</i> Various		
<i>Contractor:</i> Various		



Diversion Structure Improvement Project

Rural Ditch Company
Substantially Complete December 1, 2021



The new headgate structure and control equipment (top-left) and the boulder diversion structure (bottom-right).

Project Description

The Rural Ditch Company (Company) was organized in 1873 to deliver water to shareholders in Weld County. Currently, the Company has 21 shareholders including farmers, commercial entities, special districts, and municipalities that use the water for agricultural irrigation, drinking water, and augmentation.

The preexisting diversion structure was damaged and undermined during the September 2013 floods, but was still operations. After the flood, the structure continued to deteriorate and was in need of repair. The project included engineering and construction work to stabilize and repair the structure. The repairs included rebuilding the rock dam with a center cutoff sheetpiles and installing a grouted boulder apron on the downstream side of the structure. Construction began in the fall of 2020 and was operational for the 2021 irrigation season. Final punchlist items were completed in fall of 2021.

P R O J E C T D A T A		
Sponsor: Rural Ditch Company	County: Weld	Water Source: Boulder Creek
Type of Project: Diversion Structure Rehabilitation	Board Approval Date: July 2020	
Loan Terms: 30 yr @ 2.70% (Original) \$813,050.00 (Final) \$662,483.35		
Design Engineer: Civil Resources, LLC.		
Contractor: Concrete Works of Colorado, Inc.		



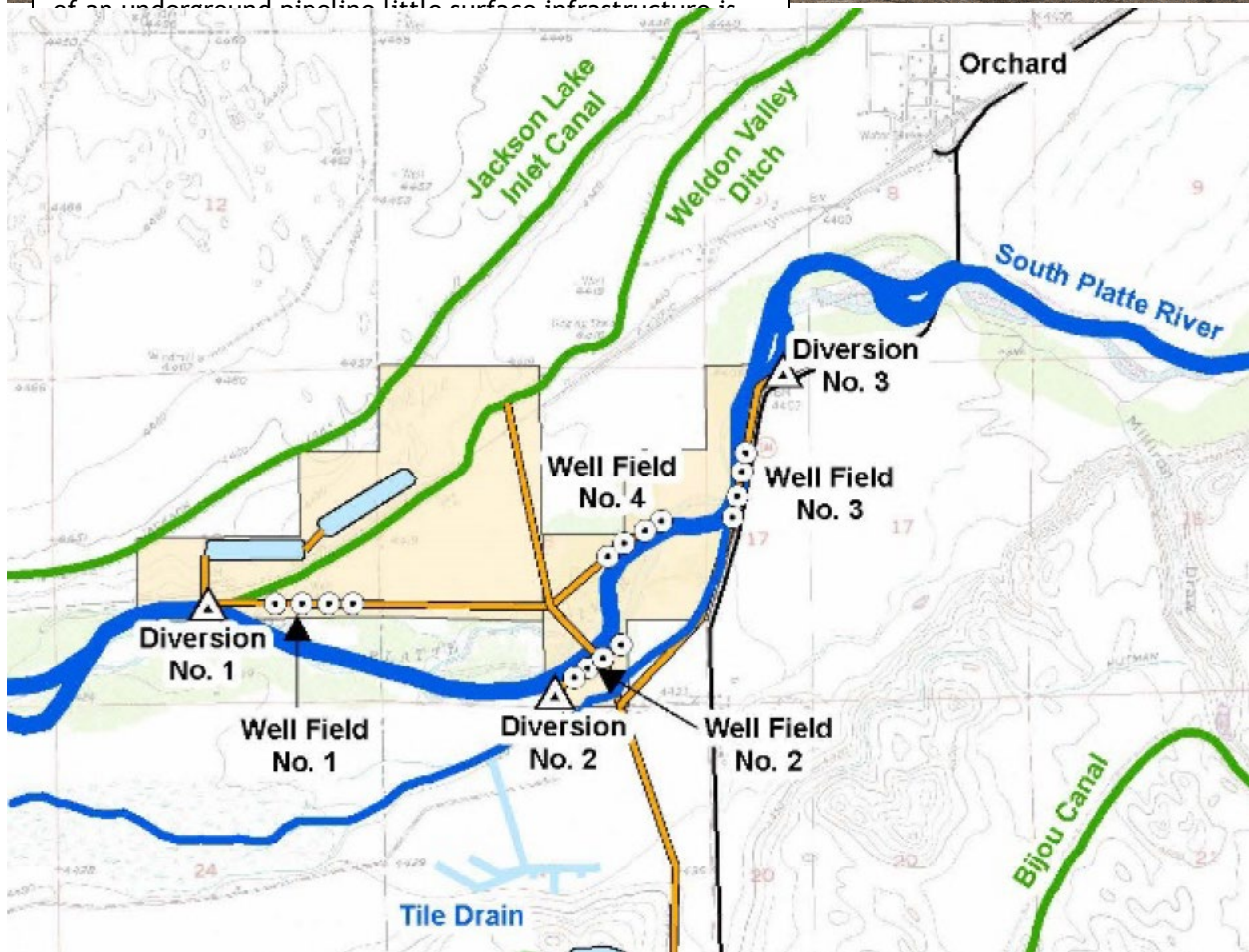
COLORADO
Colorado Water
Conservation Board
Department of Natural Resources

Walker Recharge Project

Central Colorado Water Conservancy District
Substantially Complete January 1, 2022



Finishing equipment on the project site during the winter 2020/2021 months. Because much of the project consisted of an underground piping, little surface infrastructure is





Finishing equipment on the project site during the winter 2020/2021 months. Because much of the project consisted of an underground pipeline little surface infrastructure is visible.

Project Description

The Walker Recharge Project is located in Weld and Morgan Counties between the towns of Orchard and Wiggins. Central Colorado Water Conservancy District (CCWCD) and its two subdistricts, Ground Water Management Subdistrict (GMS) and the Well Augmentation Subdistrict (WAS) jointly filed an application for water rights and for approval of plan of augmentation for the Walker Recharge site (Division 1 Water Court Case No. 16CW3202) on December 30, 2016. The court application includes surface water rights for three diversions, groundwater rights for four well fields and one existing well, numerous recharge structures, and a plan for augmentation. The plan for augmentation allows diversion from the included water rights as well as other water rights owned or otherwise controlled by CCWCD, GMS, or WAS to be delivered to the recharge ponds to generate accretions to the South Platte River.

Construction took place in two phases. The completed project allows recharge credits to be used by GMS and WAS to increase the well pumping quota issued under the respective augmentation plans. CCWCD uses recharge credits to increase the amount of water leased to GMS, WAS and other water users within the CCWCD boundaries.

P R O J E C T D A T A		
<i>Sponsor:</i> Groundwater Management Subdistrict	<i>County:</i> Weld & Morgan	<i>Water Source:</i> South Platte River
<i>Type of Project:</i> Augmentation Facility		<i>Board Approval Date:</i> September 2018
<i>Loan Terms: (Original)</i> \$9,847,500 <i>(Final)</i> \$9,847,500		
<i>Design Engineer:</i> White Sands Water Engineers, Inc.		
<i>Contractor:</i> Warbonnet Construction, Inc.		



Finishing equipment on the project site during the winter 2020/2021 months. Because much of the project consisted of an underground pipeline little surface infrastructure is visible.

Project Description

The Walker Recharge Project is located in Weld and Morgan Counties between the towns of Orchard and Wiggins. Central Colorado Water Conservancy District (CCWCD) and its two subdistricts, Ground Water Management Subdistrict (GMS) and the Well Augmentation Subdistrict (WAS) jointly filed an application for water rights and for approval of plan of augmentation for the Walker Recharge site (Division 1 Water Court Case No. 16CW3202) on December 30, 2016. The court application includes surface water rights for three diversions, groundwater rights for four well fields and one existing well, numerous recharge structures, and a plan for augmentation. The plan for augmentation allows diversion from the included water rights as well as other water rights owned or otherwise controlled by CCWCD, GMS, or WAS to be delivered to the recharge ponds to generate accretions to the South Platte River.

Construction took place in two phases. The completed project allows recharge credits to be used by GMS and WAS to increase the well pumping quota issued under the respective augmentation plans. CCWCD uses recharge credits to increase the amount of water leased to GMS, WAS and other water users within the CCWCD boundaries.

P R O J E C T D A T A		
<i>Sponsor:</i> Well Augmentation Subdistrict	<i>County:</i> Weld & Morgan	<i>Water Source:</i> South Platte River
<i>Type of Project:</i> Augmentation Facility		<i>Board Approval Date:</i> September 2018
<i>Loan Terms: (Original)</i> \$3,030,000 @ 1.75% <i>(Final)</i> \$3,030,000 @ 1.75%		
<i>Design Engineer:</i> White Sands Water Engineers, Inc.		
<i>Contractor:</i> Warbonnet Construction, Inc.		

Sheep Mountain Augmentation Facility - Reservoir



Sheep Mountain Augmentation Facility -
Downstream from reservoir and pump facility



Project Description

The Huerfano County Water Conservancy District (District) was approved for a CWCB loan in September 2013 to develop a regional augmentation program to replace depletions of wells in unincorporated communities in Huerfano County through a regional augmentation program. Within Huerfano County there are many water users that are at risk of being curtailed due either to being out of priority or due to failing (or failed) augmentation plans. The users include schools and domestic, commercial, and agricultural users. The District has utilized a Substitute Water Supply Plan and Regional Rule 14 Replacement Plan to provide augmentation water to entities that were in danger of having water use curtailed due to out of priority usage. The District believes that other water users will find it necessary to join the regional augmentation plan and the Division Engineer has indicated an urgent need for such a plan. Key project components included: the purchase of land and water rights, the construction of a recharge reservoir, and a reservoir for augmentation named the Sheep Mountain Augmentation Facility.

P R O J E C T D A T A

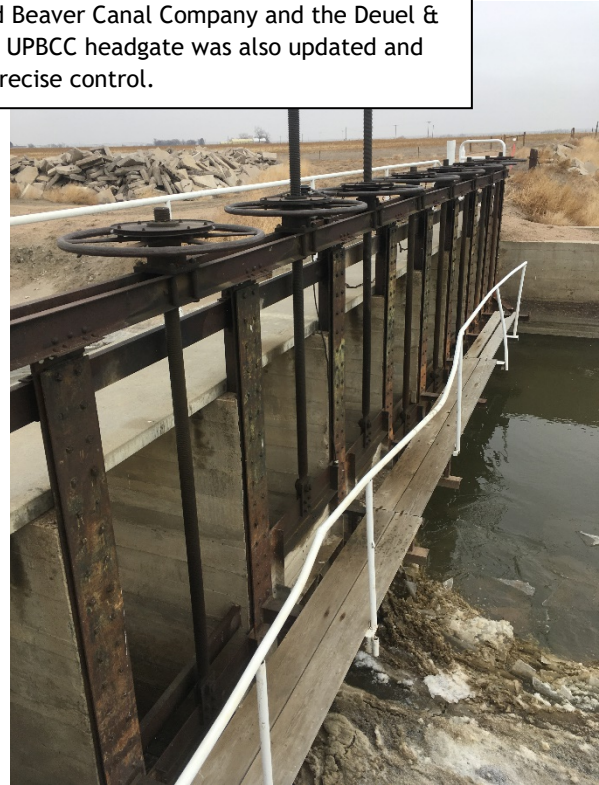
<i>Sponsor:</i> Huerfano County Water Conservancy District	<i>County:</i> Huerfano	<i>Water Source:</i> Arkansas River
<i>Type of Project:</i> Augmentation	<i>Board Approval Date:</i> September 2013	
<i>Terms of Loan:</i> 2.25% for 30 years	<i>(Original)</i> \$2,666,400.00	<i>(Final)</i> \$2,666,400.00
<i>Design Engineer:</i> TZA - Lamp Rynearson, Inc.		
<i>Contractor:</i> Paul Morgan Excavating, Inc. and Frontier Environmental Services		



Diversion Structure Replacement

Upper Platte and Beaver Canal Company
Substantially Complete February 1, 2022

The new diversion structure spans the entire width of the river allowing for diversions into the canals of both the Upper Platte and Beaver Canal Company and the Deuel & Snyder Improvements Company (left). The UPBCC headgate was also updated and allows for more precise control.



Project Description

The Upper Platte and Beaver Canal Company was incorporated in 1888 and shares a diversion off the South Platte River with the Deuel and Snyder Improvement Company. Together the two ditch companies provide irrigation water to 11,500 acres.

The existing diversion structure is a reinforced concrete slab and buttress with a height of 9 feet and a length of 1,416 feet. The diversion structure was originally built in 1936 and had improvements done in 1965. This existing structure has several deficiencies including seepage and erosion under the structure and concrete deterioration throughout the structure. This project costed of the removal and replacement of the existing structure. The new structure incorporates inflatable crest gates spillways (Obermeyer gates) and restores the channel continuity, improves sediment transport, and provides additional flow conveyance during floods.

P R O J E C T D A T A		
<i>Sponsor:</i> Upper Platte and Beaver Canal Company	<i>County:</i> Morgan	<i>Water Source:</i> South Platte River
<i>Type of Project:</i> Diversion Replacement		<i>Board Approval Date:</i> May 2019
<i>Loan Terms: (Original)</i> \$4,435,920 @ 2.25% <i>(Final)</i> \$4,078,215.22 @ 2.25%		
<i>Design Engineer:</i> Harris Engineering Consultants, Inc.		
<i>Contractor:</i> Ransom Boone Excavating		



Project Description

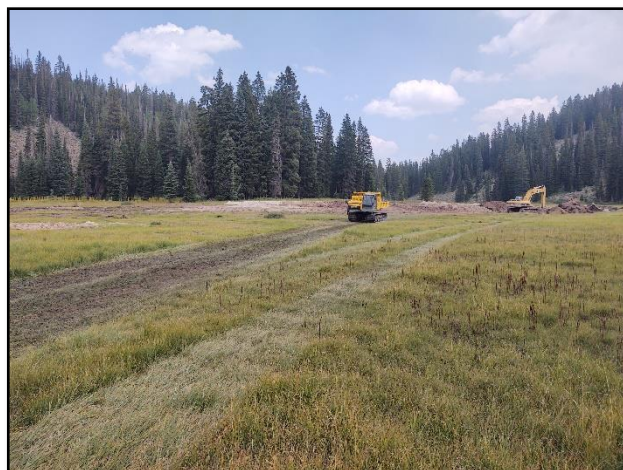
The Cedar Mesa Ditch Company was incorporated in 1898 and diverts irrigation water to 1,043 acres to raise cattle, hay and fruit. The ditch was an unlined canal that runs through Mancos shale for the lower 3.5 miles of the ditch. This section experienced significant water loss from seepage and created water quality issues in the Gunnison and Colorado River basins through leaching of salt from the underlying shale. The Company piped the lower 3.5 miles of the ditch that resulted in increases in safety and efficiency, while reducing maintenance costs. The project was funded primarily funded with NRCS EQIP grant funds, with remaining project funding coming from the WSRF and Water Plan Grant programs, the loan program, and a grant from the Colorado River District Community Funding Partnership program during construction.

P R O J E C T D A T A		
Sponsor: Cedar Mesa Ditch Company	County: Delta	Water Source: Surface Creek
Type of Project: Ditch Rehabilitation	Board Approval Date: September 2019	
Loan Terms: (Original) \$1,359,460 @ 1.55% (Final) \$468,717.05 @ 1.55%		
Design Engineer: Robert I Gallegos P.E. LLC		
Contractor: Fritchman Excavation		



Peak Reservoir and Blanche Park Reservoir Rehabilitation

Grand Mesa Water Conservancy District
Substantially Complete June 1, 2022



Blanche Park Dam Crest

Project Description

The Grand Mesa Water Conservancy District owns several reservoirs and a network of ditches to service agricultural users and municipal users including the Town of Orchard City and Cedaredge. This project consisted of the rehabilitation of Peak Reservoir (30AF) and Blanche Park Reservoir (125AF). Both reservoirs, located in the Grand Mesa National Forest, had fallen into disrepair and were breached, resulting in them not being used for nearly 50 years before being acquired by the District. Funding for the project came from District reserves, the CWCB loan, and a Water Supply Reserve Fund (WSRF) Gunnison Basin Roundtable grant. Peak Reservoir involved earthwork on the dam and new outlook works. Blanche Park Reservoir included a complete rebuilding of the dam. Construction for Peak Reservoir was completed in 2015, and construction of Blanche Park Reservoir was completed in November of 2021.

P R O J E C T D A T A		
<i>Sponsor:</i> Grand Mesa Water Conservancy District	<i>County:</i> Delta	<i>Water Source:</i> Surface Creek
<i>Type of Loan:</i> Reservoir Rehabilitation	<i>Board Approval Date:</i> May 2013	
<i>Terms of Loan:</i> 1.55% for 20 years	<i>(Original)</i> \$466,620	<i>(Final)</i> \$466,620
<i>Design Engineer:</i> MM&D Engineering Services / DOWL (Peak / Blanche Park)		
<i>Contractor:</i> Peterson Excavating, Inc. / Mountain Valley Contracting, Inc. (Peak / Blanche Park)		



Allen's Lake Filler Canal Improvement

Left Hand Ditch Company
Substantially Complete June 1, 2022

The Allen's Lake Filler Canal was a 2,750 foot long open ditch as shown in the pictures below. The project installed a 3.5-foot diameter pipe in the existing alignment which now carries the water completely underground.



Project Description

The Left Hand Ditch Company provides irrigation water to a service area of approximately 15,000 acres north of Boulder. Its service area generally lies along Left Hand Creek from the foothills of the Front Range east to Niwot.

The Allen's Lake Filler Canal Improvements Project focused on a 2,750-foot reach of Lake Ditch which parallels the west shore of Allen's Lake. The existing ditch experienced notable losses due to seepage and excessive sedimentation. This prevented the ditch from delivering the Company's desired 25cfs design flow. Due to the extremely narrow right-of-way (7.5 feet on both sides of ditch centerline), proper cleaning and maintenance of the ditch was uneconomical. Additionally, residents of the adjacent community surrounding Allen's Lake built their own crossings and patios on the ditch creating concerns of public safety. To address these issues, the Company piped the ditch with a 3.5-ft diameter pipe. Work took place between the summer of 2019 and the spring of 2022.

P R O J E C T D A T A		
<i>Sponsor:</i> Left Hand Ditch Company	<i>County:</i> Boulder	<i>Water Source:</i> Left Hand Creek
<i>Type of Project:</i> Ditch Rehabilitation		<i>Board Approval Date:</i> January 2019
<i>Loan Terms: (Original)</i> \$671,650 @ 2.50% <i>(Final)</i> \$938,326.13 @ 2.50%		
<i>Design Engineer:</i> WWC Engineering		
<i>Contractor:</i> Left Hand Excavating		



Project Description

The Tunnel Water Company (Company) owns and operates the Laramie-Poudre Tunnel (L-PT) for the benefit of its two shareholders that include Water Supply and Storage Company (WSSC) and Windsor Reservoir and Canal Company (WRCC). WSSC delivers irrigation water to its shareholders, primarily for agricultural irrigation on approximately 40,000 acres lying below the Larimer County Canal. WRCC delivers water to its municipal shareholders via the Soldier Canyon and Bellvue Water Treatment Plants. It also owns and operates the Rawah Ditch (Ditch) which collects water from Rawah Creek and delivers it to the West Branch of the Laramie River, upstream of the L-PT.

The Rawah Ditch includes two tunnels, 70 feet long and 90 feet long. At completion of the 2020 diversion season, both tunnels were found to have significant rockfall, and subsequently the Company's engineers concluded that one tunnel was in danger of imminent collapse, while the other would likely collapse within a few years. If either tunnel collapses, the Company would be unable to make water deliveries and would incur significant repair costs. The selected alternative slip lined and grouted the tunnel in order to avoid the need for workers in the tunnels with unpredictable rockfall. Construction is started in the spring of 2021 and construction was completed in the spring of 2022.

P R O J E C T D A T A		
<i>Sponsor:</i> The Tunnel Water Company	<i>County:</i> Larimer	<i>Water Source:</i> Laramie River
<i>Type of Project:</i> Rawah Ditch Tunnel Rehabilitation	<i>Board Approval Date:</i> March 2021	
<i>Terms of Loan:</i> 1.70% for 30 years	<i>(Original)</i> \$2,171,500.00	<i>(Final)</i> \$1,198,066.75
<i>Design Engineer:</i> Lithos Engineering		
<i>Contractor:</i> Restruction Corporation		

	Borrower/Projects	County	Loan Amount	Design Status	Const. Start/End	Const Status	PM	Status Description/Update
Projects in Design or Construction								
1	Amity Mutual Irrigation Company >Queen Reservoir Dam Rehabilitation CT2021-2224	Kiowa	\$1,333,000	50%	Fall 2020 - Spring 2023	5%	RP /KR.T	Dam breached. Final design underway then Dam Safety review/approval. Bid pkg. Aug2021.
2	Arapahoe County Water and Wastewater Authority >Chambers Reservoir Liner Rehabilitation CT2021-0513	Arapahoe	\$4,000,000	100%	May 2020 - May 2022	80%	RP /KR	Under construction Aug 2020. Dam Safety fill approval-May2021. Loan increase request May2021 for pump system component. Crane cert. 12/2021, pump delivery-delay until 1/2022, pouring pump pads 12/2021
3	Billings Ditch Company >Billings Ditch Implementation Project CT2022-2886	Rio Grande/Alamosa	\$171,000	100%	Fall 2021 - Fall 2022	98%	CB	This project is being managed by the Rio Grande Headwaters Restoration Foundation to replace the Billings Ditch diversion structure. A water plan grant for the same project was contracted in October. Construction is complete except for punch list items.
4	Deuel and Snyder Improvement Company >Diversion Structure Replacement CT2020-3562	Morgan	\$643,000	100%	Aug 2020 - Oct 2022	85%	CB	This project will support the replacement of UPBCC/DSIC's 1,400 foot long diversion structure on the South Platte. Contractor mobilization and first purchase of materials took place in June 2020. A Scope increase will extend the project into Fall 2022.
5	Dove Creek, Town of >Reservoir No. 2 CT2022-3321 (WPG) CTGG1 2022-3278	Dolores	\$800,000	80%	Nov 2022 - Dec 2023	0%	RP /CB	This project will support the Town of Dove creek in constructing a new storage reservoir for municipal supply. The Town also received an \$800,000 WPG for the project. Engineering is currently underway.
6	Duke Ditch Company >Piping the Duke Ditch CT2017-0915 CTGG1 2017-0212 (WSRF)	Delta	\$90,000	100%	On Hold	0%	MS	NRCS finalized the design in August 2018. Federal grant expired. Company is evaluating options of applying for a loan increase and completing project without federal grant dollars.
7	Florida Consolidated Ditch Company >Hess Lateral Improvement CT2019-2034 CTGG1 2016-1319 (WSRF)	La Plata	\$1,075,000	100%	On Hold	0%	KR	Company received bids. The low bid exceeded the available funding. Company is in the process of value engineering and project adjustments.
8	Florida Consolidated Ditch Company >Florida Canal Diversion Replacement CT2021-2890 WSRF & WPG CTGG1 2021-2418	La Plata	\$750,000	10%	Summer 2021 - Fall 2023	0%	MS	This project is the replacement of a low head dam diversion structure with multibeneficial outcomes. Design work began in the summer of 2021 and is ongoing.
9	Fort Morgan Farms, LLC >Delta Water Storage Phase 1 CT2021-2222	Weld	\$8,982,000	100%	Fall 2021 - Spring 2022	60%	CB	The Delta Storage Project will construct a below grade storage reservoir. The loan covers the cost of constructing a slurry wall around the reservoir to isolate future stored water from existing groundwater. Currently the slurry wall is under construction.
10	Fruitland Irrigation Company >Tunnel and Canal Renovation CT2019-2848 WSRF CTGG1 2019-2449 WPG CTGG1 2019-2475	Delta & Montrose	\$1,729,000	100%	Jan 2020 - Dec 2023	35%	RP /KR	Sept 2018 letter from Bureau of Reclamation recvd. Section 1 tunnel work bid pkg Dec2020. Section 2 Tribble - Pipe placement, compaction testing. Section 3&4 Rundie - begin breaking and removal of bedrock. Tribble and Wright placing concrete lining.
11	Genesee Water and Sanitation District >Reservoir No. 1 Enlargement CT2021-2851 WPG CTGG1 2021-3347	Jefferson	\$4,200,000	100%	Fall 2021 - Winter 2023	5%	RP /CB	The District was approved for this loan in Sep 2020 and a Water Plan Grant followed in March 2021. Bids were received in June 2021 and were well above expectations. A loan increase request was submitted and will be considered at the July 2022 Board meeting.
12	Glenwood Springs, City of >System Redundancy and Pre-Treatment Improvemnts CT2021-3104	Garfield	\$8,000,000	100%	Spring 2021 - Fall 2022	20%	CB	This Wildfire Emergency Loan will improve the infrastructure for Glenwood Springs' water collection system to cope with increased sediment in their source waters as a result of the Grizzly Creek Fire in 2020.
13	Grand Junction, City of >Carson Reservoir Dam Rehabilitation CT2021-3110	Mesa	\$4,300,000	100%	Spring 2021 - Fall 2022	30%	CB	This project will update Grand Junction's Carson Reservoir in compliance with Dam Safety's recommendations including installing state-of-the-art flood advance warning equipment. The Contractor shut down for the winter and re-mobilized in spring 2022.
14	Grand Junction, City of >Purdy Mesa Flowline Replacement CT2021-2857	Mesa	\$7,000,000	100%	Winter 2021 - Summer 2023	0%	CB	The Purdy Mesa Flowline is a large diameter pipeline that supplies raw water to the Grand Junction WTP. Most of the line was replaced as part of previous projects and this project will replace the last remaining out-of-date pipe material. Project is on hold until 2022.
15	Groundwater Management Subdistrict of CCWCD >Hokestra Reservoir Purchase CT2020-3348	Weld	\$5,390,500	100%	May 2020 - Dec 2022	60%	CB	This Project will purchase an existing reservoir for use as augmentation storage. Funds have been disbursed for the reservoir purchase, but construction is in the earliest phases.
16	Groundwater Management Subdistrict of CCWCD >Pioneer Reservoir CT2019-3687	Weld	\$8,611,000	75%	Sep 2019 - Dec 2022	60%	CB	This is a gravel pit retrofit for augmentation water supply. Funds for the initial reservoir purchase and some engineering were disbursed in May 2019. Construction efforts are expected to begin in 2021.
17	Hidden Valley Water District >Master Water Meter Connection CT2020-2244	Jefferson	\$1,720,000	100%	Feb 2020 - Dec 2021	95%	RP /KR	Assets and operations are all to the District. District signed and approved EMD IGA. Precon Dec2019. Construction begin Feb 2020. EMD connect 7/2020. Construction complete, final walkthru Aug2020. Working on IGA with EMD. Continued water court proceedings by EMD as of 12/2021.
18	Logan Irrigation District >Prewitt Reservoir Rehabilitation CT2021-3898	Logan	\$1,563,000	100%	Spring 2021 - Fall 2022	95%	CB	This project is installing wave breaks on the upstream face of Prewitt Reservoir Dam. Their installation will allow a storage restriction to be removed. The project is currently under way and the contractors are on site.
19	Lookout Mountain Water District >Upper and Lower Beaver Brook Dam Rehabilitation CT2021-3115	Jefferson	\$3,500,000	100%	Spring 2021 - Fall 2022	90%	RP /CB	Contractor mobilized and site staging. Construction and dam demolition. RCC dam 100% complete as of 12/21. Spillway and outlet work construction continues.
20	North Sterling Irrigation District >North Sterling River Diversion Replacement CT2021-3875	Morgan	\$3,498,000	100%	Fall 2021 - Fall 2022	90%	CB	Demolition of the existing structure began in July 2021. The majority of the work is completed. Only the electrical compenents for the pump house remain to be installed.
21	Ogilvy Irrigating and Land Company >Seely Reservoir Dredging >CT2019-2099 CTGG1 2019-2018 (WPG)	Weld	\$2,252,000	85%	Fall 2021 - Spring 2023	0%	RP /KR	USACE 12/2019 non jurisdictional determination. Floating dredge proposed in lieu of draining/excavating reservoir convent. excavation/haul. OILC concerned floating dredge ability dewater sufficiently for adjacent property. Reviewing options.

	Borrower/Projects	County	Loan Amount	Design Status	Const. Start/End	Const Status	PM	Status Description/Update
22	Orphan Wells of Wiggins >Kiowa Creek Dam Rehabilitation CT2021-3116	Morgan	\$373,000	100%	Spring 2021 - Fall 2022	80%	CB	This project will repair five non-jurisdictional dams operated by Orphan Wells of Wiggins for augmentation purposes. Mobilization took place in January 2021. Dam work complete Spring 2021. Loan increase request (May 2021) for well power supply conversion.
23	Redmesa Reservoir and Ditch Company >Redmesa Reservoir Rehabilitation Engineering CT2022-0498	La Plata	\$183,000	60%	TBD	0%	MS	This project is to engineer a financially feasible dam rehabilitation, including a potential enlargement. Work began on March 8, 2021 and is now exploring funding options due to significant cost increases. The Company is working to secure a sponsor for NRCS' s PL-566 program.
24	Rio Grande Water Conservation District Subdistrict No. 5 >Saguache Pipeline CT2021-3846	Saguache	\$4,844,000	80%	Spring 2021 - Fall 2022	0%	RP /KR	Working on well owner agreement and Project easement agreements. Mar2022-considering revised pipeline alignment.
25	Root and Ratliff Ditch Company >Ditch Piping and Rehabilitation >CT2022-2976	Montezuma	\$300,000	100%	Fall 2019 - Fall 2022	95%	RP /KR	Project is nearly complete. All pipe is in place. Final grading and seeding is expected to be done by fall.
26	Southeastern CO Water Conservancy District >Pueblo Dam Hydroelectric Project CT2018-0833	Pueblo	\$17,220,000	100%	June 2017 - Nov 2021	98%	RP /KR	Construction beginning fall 2017. District anticipates power production by fall of 2018. Tie-in to SDS complete April 2018. Waiting on transformer approval from Black Hills. Turbine and generator placement and fiber optic line approval. Functional and producing power. Finalizing adjustments and design details. 2-yr performance time extension approved.
27	South Platte Ditch Company >Diversion Structure Rehabilitation CT2022-0424	Washington	\$1,440,000	100%	Aug 2021 - Apr 2022	98%	CB	The project will replace the South Platte Ditch Company's Diversion Structure. Long-lead-time items have been purchased and delivered to site. Construction is complete and awaiting closeout.
28	Spring Dale Ditch Company >Diversion Structure Replacement Project >CT2020-3110	Logan	\$1,210,000	100%	Feb 2020 - Apr 2022	98%	CB	This project will replace Springdale's aging diversion structure on the South Platte. All work except the final punch list items are complete.
29	Trinchera - GMS >Augmentation Pipeline >CT2022-3040	Rio Grande	\$977,000	50%	Jan 2022 - Dec 2022	99%	RP /KR	Project is complete. Substantial completion expected in the fall of 2022.
30	Triview Metropolitan District >Stonewall Springs Reservoir Complex >CT2022-3328	Pueblo	\$4,731,000	100%	Jan 2021 - Sep 2022	75%	RP /KR.T	MAR2022-Reservoir under construction and working on pumphouse. Large pay request anticipated 6/2022. Delay on electrical panel likely install Aug2022.
31	Tunnel Water Company >West Half Laramie-Poudre Tunnel Rehabilitation CT2019-3706	Larimer	\$17,080,000	100%	Sep 2019 - Apr 2023	85%	RP /KR	Construction scheduled to begin the Fall 2019, when low water and non-irrigation season. Requesting loan increase 11/2019, 3/2020 from Projects Bill 2020. Construction delays due to Cameron Peak wildfire. Unplanned construction season 3. Runaround complete, station 52+00 of 65+00.
32	Tunnel Water Company >Headgate Improvements Project (Wildfire Impact) CT2021-3928	Larimer	\$1,206,000	100%	pr 2021 - Sep 2021	99%	RP /KR	Power supply installation complete. Duperon gate delivery at site. Headgate installation underway. Construction complete. Project final.
33	Victor, City of >Victor Reservoir No. 2 Dam Rehabilitation CT2021-3873	Teller	\$510,000	100%	pr 2021 - Dec 2022	0%	RP /KR	Bid package compete and advertised. Prebid scheduled 19May2021. Planned begin construction Jun2021 changed to March 2022. Loan increase request January 2022.
34	VINELANDS POWER PLANT PROJECT							This project will replace the existing hydroelectric powerplant. PPA is signed, LOPP is signed. Contractor mobilized November of 2021 and construction is progressing as expected. Contractor is experiencing shipping delays for custom power plant equipment, but is able to work around the issue for the time being.
	a. Grand Valley Water Users Association >Vinelands Power Plant >CT2022-2084 WPG CTGG1 2022-2072	Mesa	\$778,011	100%	Nov 2021 - Winter 2022	60%	MS	
	b. Orchard Mesa Irrigation District >Vinelands Power Plant CT2022-2057	Mesa	\$853,912	100%	Fall 2021 - Fall 2022	60%	MS	
35	Wiggins, Town of >Wiggins Recharge Facility at Glassey Farms CT2018-0892	Morgan	\$2,385,000	100%	Jul 2017 - Jul 2022	0%	CB	The purpose of this project is to develop an augmentation water source for the Town. In August 2017 the Town purchased Glassey Farms and its associated water rights and 52% of funds were disbursed at that time. The project is back underway and an extension was granted.
36	Windy Gap Firming Project Water Activity Enterprise >Windy Gap Project CT2021-2039	Larimer	\$89,108,911	100%	Spring 2021 - Summer 2024	15%	CB	Construction contract was awarded in December and allotment contracts among project participants are being drafted. Contractor was selected in October. Project loan conditions were amended at the March Board Meeting. The project is well underway, but has not drawn on the loan yet.
37	WISE Project - Phase 2 Infrastructure \$7,326,940							Binney Connection Pipeline of Water Infrastructure and Supply Efficiency project will increase WISE flow capacity to 30MGD and provide infrastructure from Aurora Binney Facility to SMWSA. Pumps/Treatment-Glacier, Pipeline/Infrastructure-T.Lowell, Jacobs is Engineer. Vault excavation began 9/2020. Construction trailer onsite through project duration. Glacier complete foundation work, pump cans have been delivered and installed, pump motors have arrived at the pump manufacture, preliminary SCADA meetings begun, Glacier starting to form rebar for the flow control building, start laying pipe. Precast concrete walls for pump station planned Jun2021.
	a. Cottonwood W&S Dist - C150408C (CT2015-0105)	Douglas/ Arapahoe	\$1,116,000	100%	Jan 2020 - Dec 2022	90%	RP /KR	
	b. Inverness W&S Dist - C150409C (CT2015-0119)	Douglas/ Arapahoe	\$1,413,000	100%	Jan 2020 - Dec 2022	90%	RP /KR	
	c. Parker W&S Dist - C150410C (CT2015-0109)	Douglas/ Arapahoe	\$3,384,810	100%	Jan 2020 - Dec 2022	90%	RP /KR	
	d. Pinery (Den SE WSD)C150411B (CT2015-0086)	Douglas/ Arapahoe	\$1,413,130	100%	Jan 2020 - Dec 2022	90%	RP /KR	
	WISE Project - DIA Connection \$1,902,600							Annual disbursement to be made on this loan through 2021.Design Status indicates amount of funds disbursed to date. WISE WMA negotiations
	a. Cottonwood W&S Dist - C150408D (CT2015-0104)	Douglas/ Arapahoe	\$363,600	80%	N/A	60%	RP /KR	

	Borrower/Projects	County	Loan Amount	Design Status	Const. Start/End	Const Status	PM	Status Description/Update
38	b. Inverness W&S Dist - C150409D (CT2015-0120)	Douglas/ Arapahoe	\$450,000	80%	N/A	60%	RP /KR	indicates percent of funds disbursed to date. WISE WDA negotiations between parties continue with the goal of having an amended Water Delivery Agreement ready to be brought to the respective Boards and Council for review and approval by April 1, 2021. Group discussion continues focused on the DIA Connection.
	c. Parker W&S Dist - C150410D (CT2015-0110)	Douglas/ Arapahoe	\$1,089,000	80%	N/A	60%	RP /KR	

Projects Under Contract : \$222,036,874

Approved Projects - Not Under Contract								
a	Taylor & Gill Ditch Company >Ditch Piping CT2022-XXXX CTGG1 2022-XXXX	Larimer	\$125,000	0%	Fall 2020 - Spring 2021	0%	CB	This project will replace 1,000 feet of open ditch with a buried pipe. Contracting documents are dated and need redone.
b	Southeastern Colorado Water Conservancy District >Arkansas Valley Conduit CT2022-XXXX	Pueblo, Crowley, Otero, Bent, Prowers	\$90,000,000	0%	Fall 2020 - Fall 2035	0%	KR	September 2022 Feasibility Study to CWCB per SECWCD. Likely Jan2023 CWCB presentation.
c	Breckenridge, Town of >Goose Pasture Tarn Dam Rehabilitation CT2022-XXXX	Summit	\$13,000,000	100%	Fall 2020 - Spring 2023	50%	CB	Projects Bill
d	Grand Junction, City of >Kannah Creek Flowline Replacement >CT2022-XXXX	Mesa	\$3,200,000				CB	

Not Under Contract SubTotal = \$106,325,000

Grand Total = \$328,361,874

**WATER PROJECT COSTRUCTION LOAN PROGRAM
LOAN REPAYMENT DELINQUENCY REPORT
LOAN FINANCIAL ACTIVITY REPORT
July 2022**

LOAN REPAYMENT DELINQUENCY

Loan Repayments received relative to the Water Project Construction Loan Program have been reviewed for the period covering July 2021 through June 2022. The effective due date of the payment is inclusive of the Board's current 60 day late policy. Hence, the date the payment was received was compared to the last day allowable prior to the payment being considered late.

Repayments due for Fiscal Year 2022 totaled 321. All borrowers' payments are current.

LOAN FINANCIAL ACTIVITY

Loan Financial Activity relative to the Water Project Construction Loan Program for Fiscal Year 2022 is summarized as follows: Funds received relative to loans in repayment totaled \$52.3M for this year. Funds disbursed relative to new project loans totaled \$39.7M for this year. Net activity resulted in \$12.5M received by the CWCB Construction Fund and the Severance Tax Perpetual Base Fund (STPBF) over the total disbursed.

Further breakdown is summarized as follows: The Construction Fund portion consists of \$20.9M in receivables and \$21.3M in disbursements for a total net activity of \$395K disbursed over received. The STPBF consists of \$31.3M in receivables and \$18.3M in disbursements for a total net activity of \$12.9M received over disbursed.

CONSTRUCTION FUND

Period	Principal	Interest	Total Received	Disbursements	Net Activity
July 2021	\$ 607,340	\$ 273,708	\$ 881,048	\$ 572,695	\$ 308,354
August 2021	\$ 400,916	\$ 224,276	\$ 625,192	\$ 20,973	\$ 604,219
September 2021	\$ 1,568,570	\$ 869,305	\$ 2,437,875	\$ 2,513,291	\$ (75,416)
October 2021	\$ 578,559	\$ 188,950	\$ 767,509	\$ 569,027	\$ 198,482
November 2021	\$ 600,620	\$ 567,255	\$ 1,167,875	\$ 3,505,746	\$ (2,337,871)
December 2021	\$ 353,063	\$ 4,530	\$ 357,593	\$ 4,408,669	\$ (4,051,076)
January 2022	\$ 1,085,892	\$ 1,384,646	\$ 2,470,538	\$ 592,692	\$ 1,877,846
February 2022	\$ -	\$ 903,671	\$ 903,671	\$ 1,782,383	\$ (878,713)
March 2022	\$ 2,041,297	\$ 771,534	\$ 2,812,831	\$ 982,687	\$ 1,830,144
April 2022	\$ 1,116,287	\$ 504,096	\$ 1,620,382	\$ 1,053,085	\$ 567,298
May 2022	\$ 4,289,192	\$ 321,599	\$ 4,610,792	\$ 531,388	\$ 4,079,403
June 2022	\$ 1,647,328	\$ 631,054	\$ 2,278,383	\$ 4,796,516	\$ (2,518,133)
FY 2022 Totals	\$ 14,289,066	\$ 6,644,624	\$ 20,933,689	\$ 21,329,153	\$ (395,463)

SEVERANCE TAX TRUST FUND PERPETUAL BASE ACCOUNT

Period	Principal	Interest	Total Received	Disbursements	Net Activity
July 2021	\$ 757,337	\$ 51,664	\$ 809,000	\$ 955,767	\$ (146,767)
August 2021	\$ 880,919	\$ 1,083,636	\$ 1,964,554	\$ 1,475,726	\$ 488,828
September 2021	\$ 5,642,601	\$ 1,109,255	\$ 6,751,855	\$ 1,250,623	\$ 5,501,232
October 2021	\$ 7,507,196	\$ 1,640,496	\$ 9,147,692	\$ 2,756,961	\$ 6,390,731
November 2021	\$ 523,683	\$ 228,247	\$ 751,929	\$ 3,358,888	\$ (2,606,959)
December 2021	\$ 72,473	\$ 14,358	\$ 86,831	\$ 5,102,326	\$ (5,015,495)
January 2022	\$ 626,718	\$ 489,354	\$ 1,116,072	\$ 680,678	\$ 435,394
February 2022	\$ -	\$ 514,331	\$ 514,331	\$ 1,341,797	\$ (827,466)
March 2022	\$ 886,658	\$ 68,667	\$ 955,326	\$ 1,288,883	\$ (333,557)
April 2022	\$ 474,489	\$ 728,049	\$ 1,202,538	\$ 139,567	\$ 1,062,971
May 2022	\$ 7,928,964	\$ 149,048	\$ 8,078,011	\$ 40,808	\$ 8,037,203
June 2022	\$ 997,819	\$ 68,855	\$ 1,066,674	\$ 73,235	\$ 993,439
FY 2022 Totals	\$ 25,301,036	\$ 6,077,104	\$ 31,378,141	\$ 18,392,023	\$ 12,986,117

GRAND TOTALS	\$ 39,590,102	\$12,721,728	\$ 52,311,830	\$ 39,721,176	\$ 12,590,654
-------------------------	----------------------	---------------------	----------------------	----------------------	----------------------