



COLORADO

Colorado Water Conservation Board *Department of Natural Resources*

DIRECTOR'S REPORT

March 2022

Interstate Compact Compliance • Watershed Protection • Flood Planning & Mitigation • Stream & Lake Protection
Water Project Loans & Grants • Water Modeling • Conservation & Drought Planning • Water Supply Planning



COLORADO

Colorado Water Conservation Board

Department of Natural Resources

TO: Colorado Water Conservation Board Members

FROM: Rebecca Mitchell
Anna Porter

DATE: March 15-16, 2022

SUBJECT: **Agenda Item 5b, March 2022 CWCB Board Meeting Director's Report**

TABLE OF CONTENTS

Pg. 4 - STATEWIDE

- CWCB Small Feasibility Grant Fund Update

Pg. 4 - COLORADO RIVER BASIN

- Colorado River Water Use

Pg. 5 - COLORADO RIVER BASIN

- Upper Colorado Wild and Scenic Stakeholder Group

Pg. 6 - WATER CONSERVATION AND DROUGHT PLANNING UPDATES

- CWCB Water Efficiency Grant Fund Program (WEGF) Update
- Water Efficiency and Drought Plan Updates
- Drought Management Plans
- Water Efficiency Plans

Pg. 7 - WATER CONSERVATION AND DROUGHT PLANNING UPDATES

- Governor's Water Availability Task Force
- Colorado Water Loss Initiative
- Land/Water Planning NEXUS

Pg. 8 - WATERSHED AND FLOOD UPDATES

- Wildfire Ready Watersheds (SB21-240)
- Marshall Fire Watershed Analysis

Pg. 9 - WATERSHED AND FLOOD UPDATES

- Location Chosen for Four Corners Radar
- Colorado Floodplain and Stormwater Criteria Manual

Pg. 10 - WATERSHED AND FLOOD UPDATES

- The Letter of Map Revision (LOMR) Review Partners Program
- March 2022 Risk Mapping, Assessment and Planning (MAP) Project Updates by Major Water Basin

Pg. 14 - WATERSHED AND FLOOD UPDATES

- Multi-Watershed Risk Map Projects

Pg. 15 - WATERSHED AND FLOOD UPDATES

- LiDAR Acquisition

Pg. 16 – WATERSHED AND FLOOD UPDATES

- Stream Management Plan and Watershed-Based Plan Overlap

Pg. 17 – WATERSHED AND FLOOD UPDATES

- Fluvial Hazard Zone Program

Pg. 18 – WATERSHED AND FLOOD UPDATES

- National Flood Insurance Program (NFIP)

Pg. 20 - WATER SUPPLY PLANNING SECTION UPDATES

- Water Supply Planning Section March 2022 Update
- Attachment – March 2022 Approved WSRF Grants

Pg. 39 – WATER PLAN GRANTS \$50,000 AND UNDER

- Attachment – Grant Recommendations 50k and Under
- Attachment – Grant Approval Letter to Staff from Director
- Attachment – Approved Grants 50k and Under

Pg. 44 - INSTREAM FLOW ATTACHMENTS

- Instream Flow De Minimis Report

Pg. 45 - INSTREAM FLOW ATTACHMENTS

- Instream Flow and Natural Lake Level Program Summary of Resolved Opposition Cases

Pg. 57 - LOAN PROGRAM ATTACHMENTS

01 - Water Project Loan Program Interest Rates

02 - Prequalified Project List and Loan Prospect Summary

03 - Design and Construction Status Report

04 - Loan Repayment Delinquency Report

STATEWIDE

CWCB SMALL FEASIBILITY STUDY GRANT FUND UPDATE:

New grant applications approved:

1. None

Previously approved grants in FY21/22:

1. Twin Lakes Reservoir and Canal Company – Grizzly Dam Rehabilitation (\$49,950)
2. Town of Dove Creek – Reservoir No. 2 (\$7,500)
3. St. Vrain and Left Hand Water District – Copeland Reservoir Lining (\$50,000)

Total funds approved for feasibility study grants in FY21/22: \$107,450

COLORADO RIVER BASIN

COLORADO RIVER WATER USE—

2022 Colorado River Storage as of February 28, 2022			
	Elevation (feet above mean sea level)	Storage (MAF)	Percent of Capacity
Lake Mead	1,066.81	8.948	34%
Lake Powell	3,527.18	6.061	25%
Total System Active Storage		21.505	36%
2021 Total Active Storage		26.984	45%
		Flow (MAF)	Percent of Average
Forecasted Unregulated Inflow into Powell (Forecasted Water Year 2022)		6.362	66%

Forecasted CY 2022 Lower Basin Consumptive Use		
State	Use (MAF)	Total (MAF)
Arizona	2.432	
California		
California Agricultural	3.317	
Metro. Water District	1.075	4.409
Other	0.017	
Nevada	0.243	7.084

*Note MAF = million acre-feet

Upper Colorado River Wild and Scenic Stakeholder Group—

On January 18th 2022, the Upper Colorado Wild and Scenic Stakeholder Group (SG) approved a channel maintenance flow monitoring plan. This final piece of the SG alternative management plan provides basic guidance about the type of information that will be collected, the frequency, and defines who will complete the work. A number of additional details will need to be developed in the next year to finalize protocols for methods, select sites, and develop scopes of work for contractors to start monitoring in 2023. Otherwise, the SG continues to hold regular meetings and all committees continue to work towards implementing the alternative management plan. The SG will work on finalizing an annual monitoring report, make decisions about 2022 monitoring, and select a new co-chair at the March SG meeting. The SG is moving towards incorporation in order to set up an endowment fund and continues to explore potential long term funding options and investigate potential water acquisitions.

WATER CONSERVATION AND DROUGHT PLANNING UPDATES

OWCDP Director's Report Items – March 2022

CWCB WATER EFFICIENCY GRANT FUND PROGRAM (WEGF) UPDATE:

Per the Board's decision in May 2021 to merge this program into the Water Plan Grant Conservation & Land Use Planning and the Engagement & Innovation category, applications will no longer be accepted through this grant program.

Staff will continue to spend down the funds that remain in the WEGF and update the Board on in-progress grants.

The following are deliverables sent to the CWCB since the last Director's Report:

- **Deutsche Domestic Water Company** – Drought Management Plan – *50% Progress Report*
- **City of Englewood** – Water Efficiency Plan Update – *50% Progress Report*
- **Tri County Water Conservancy District** – Water Efficiency Plan Update – *Final Plan*

(Ben Wade)

WATER EFFICIENCY & DROUGHT PLANS UPDATE: The Office of Water Conservation & Drought Planning (OWCDP) continues to work with the following providers to approve their Water Efficiency and Drought Management Plans:

DROUGHT MANAGEMENT PLANS

Approved Plans

No additional Plans have been approved since the last Board meeting.

Drought Management Plans in review

- City of Durango

WATER EFFICIENCY PLANS

Approved Plans

- **Crested Butte South Metropolitan District**

The following plans have been given *conditional approval*. CWCB staff will continue to work with these entities until their respective Water Efficiency Plans achieve approval status.

Conditional Approval

- **Town of Frederick**

Water Efficiency Plans in review

- **Tri County Water Conservancy District**

(Kevin Reidy & Sam Stein)

GOVERNOR'S WATER AVAILABILITY TASK FORCE: The next Water Availability Task Force meeting will be held on March 22 from 9:30-11:30a. Please check the website ([Water Availability & Flood Task Forces | DNR CWCB \(colorado.gov\)](#)) for additional information. **(Ben Wade)**

CO WATER LOSS INITIATIVE: Phase II of the Colorado Water Loss Initiative officially kicked off on September 1, 2021 with open registration. Kevin and the project team has reassembled the advisory group and has added the Colorado Rural Water Association as well as folks from DOLA. Due to COVID we have rescheduled any in-person workshops for later on in the Spring and given participants a number of virtual options. Additionally, due to the snowstorm in early February, we had to cancel the in-person workshops in Colorado Springs and Pueblo. Those participants plus more are attending the two virtual workshops scheduled for March 8-9 and 10-11. As of early January, we have 68 utilities registered for the program. Kevin and the advisory group will be reaching out to prospective registrants to increase registration. The good news is that almost half of the registered utilities are smaller and more rural in nature which is one of the goals of this phase. www.coloradowaterloss.org **(Kevin Reidy)**

LAND/WATER PLANNING NEXUS:

- Kevin has been participating on the core planning team for the Denver One Water Plan funded by a water plan grant. The team consists of various Denver city departments, Mile High Flood, Denver Water, Metro Wastewater and the Greenway Foundation. The plan was officially released on October 28, 2021. With the plan complete the core group (now called OWLS, One Water Leaders) will begin the implementation phase and will continue to meet regularly. <https://www.denvergov.org/Government/Agencies-Departments-Offices/Department-of-Transportation-and-Infrastructure/Programs-Services/One-Water>
- The Water and Land Use Planning Alliance has its next meeting in early June, 2022 (final date TBD).
(Kevin Reidy)

WATERSHED AND FLOOD UPDATES

Wildfire Ready Watersheds (SB21-240) – Proof of Concept and Mapping Update

Understanding Statewide susceptibility requires the mapping of both assets and hazards. It was immediately acknowledged by our team that showcasing direct intersects of individual assets with each hazard would be greatly beyond the scope and available data for this study.

In order to showcase susceptibility, it was then a question of how to show the interaction of assets and hazards in a meaningful way. We started our analysis with Water Supply values and assets. This is an effort to both prove our concept and build off the work previously done by the Colorado State Forest Service (CSFS) in their Forest Action Plan (FAP), where they showcased a “Watershed Protection” theme. Working with stakeholders and water users, we came up with the plan to identify both “natural water infrastructure” and “built water infrastructure” to showcase as water supply assets. Each individual layer that builds the natural or built group is analyzed by assessing a certain GIS attribute and aggregating that attribute to a HUC 12 level. That allows us to show the relative abundance of each resource, compared to the other HUC 12’s throughout the State. We then apply a statistical data clustering technique to rate the HUC 12’s into one of seven categories. This give us both an aggregate summary map for individual resources and a means to combine resources into their groups and further up to their respective themes. These combined value maps will then be overlaid by hazard maps to showcase general susceptibility throughout the state.

Hazard mapping has just begun and will have more updates soon.

(Steve Reeves)

Marshall Fire Watershed Analysis

As part of the recovery effort for the Marshall Fire, the State Recovery Task Force has asked for a Burned Area Emergency Response (BAER) effort to be mobilized. Traditionally, following a wildfire on USFS lands, a USFS team will address the BAER analysis, which includes a spatial assessment of the soil burn severity as well as an estimate of future hazards, such as debris flows. Because the Marshall Fire did not occur on federal lands, there was no initial effort to perform this analysis. For this reason, the State Recovery Task Force (SRTF) has asked for a state-led effort to accomplish this analysis. Angela Boag of the DNR Executive Director’s Office has been tasked with leading this effort.

The Marshall Fire was a very unique event that significantly differed from most other large Colorado wildfires. There was a fair amount of agreement among team members from the outset that because this occurred in a grassland environment, rather than a forest environment, that quick recovery is expected and the usual increased hazards such as flooding and debris flows may not come to fruition. However, in conversations with local stakeholders, the team has determined that enough concerns exist at the local level to warrant moving forward with the analysis. Results from this analysis will be used to determine if enhanced post-wildfire hazards exist, if physical projects are needed to help speed watershed recovery, and can be used as a demonstration project to determine how to proceed if future similar disasters occur outside of forested areas.

Both the NRCS and the USFS have offered to help with the soil analysis, which is a critical data point in the post-fire hydrologic analysis. Unfortunately, these efforts have thus far been hampered by a constant onslaught of winter storms that has resulted in steady snow cover on the watershed. Both January and February were in the Top 20 snowiest months for their respective months. Together, they represent one of the wettest starts to the year ever in the Denver metro area. An effective post-fire soil analysis requires snow free conditions so that remote imagery can fully and effectively portray changes to the watershed and this has not yet been achieved as of February 28th. The Technical Assistance team of the Watershed and Flood Protection Section, comprised of both staff and an on-call consultant, are standing by ready to perform the hydrologic analysis once this data becomes available. At this time, the team believes the analysis will not show widespread problems to values at risk, but this still needs to be confirmed by a modeling analysis.

(Kevin Houck)

Location Chosen for Four Corners Radar

After years of site identification, modeling, landowner negotiation, and stakeholder outreach, La Plata County and a team of stakeholders identified the preferred site to place the Four Corners Radar, a gap-filling weather radar planned to be built in the Durango area. The radar, planned to be built using a \$1.7M grant provided by the Colorado Department of Local Affairs and augmented by numerous other sources, must be completed by the end of 2023 under the conditions of the grant.

Numerous sites were identified and analyzed. The initially preferred site, colloquially known as Bridge Timber, was targeted for the first couple years due to its superior radar quality, but was eventually dismissed as infeasible due to access, power, and land ownership issues. Numerous other sites were also analyzed for radar quality and logistical issues.

In the end, a location at the Durango/La Plata County airport was chosen to move forward. Although the quality of the radar at this location is not as good as Bridge Timber, it was still better than the majority of sites chosen, but the logistical qualities of this site including access, power, land ownership, permitting, and others proved to be superior and will allow a quality radar to be built within the time constraints of the DOLA grant. This meeting was unanimously approved during a virtual meeting of stakeholders held on Feb. 10th. A subsequent meeting was held with County elected leadership, which also endorsed the plan.

From this point forward, this will largely be a La Plata County project, but CWCB staff will remain available for technical assistance as needed through the completion of the project.

(Kevin Houck)

Colorado Floodplain and Stormwater Criteria Manual

CWCB staff are working with their Consultant and Steering Committee on revising the Statewide Floodplain and Stormwater Criteria Manual (Criteria Manual). Internal drafts of the updated Phase 1

Criteria Manual sections are under review by the Steering Committee through March. The Phase 1 update is focused on creating guidance that better aligns with recent federal and industry standards and information to help communities manage floodplain and stormwater projects. A subsequent update will also explore revisions to align with Colorado's watershed protection and management program updates (Phase 2). The Phase 2 is expected to get underway in June. A six-week public review period is anticipated from early April through mid-June. Several public webinars for Phase 1 engagement will be scheduled in April 2022. Draft Chapters and notices of Public Webinars will be posted to the CWCB website in early April.

The Letter of Map Revision (LOMR) Review Partners Program

The CWCB LOMR Review Partners Program is continuing. Staff has been able to work with applicants, communities and the Federal Emergency Management Agency (FEMA) to answer questions, provide guidance, and work through complex issues for both ongoing and upcoming map revision requests. Through these cases we process revisions to modify flood hazard information on Flood Insurance Rate Maps (FIRMs). We have 36 cases in process with 21 active cases ongoing in Weld, Douglas, El Paso, Boulder, Summit, Gilpin, Larimer, and Prowers Counties.

March 2022 Risk Mapping, Assessment and Planning (MAP) Project Updates by Major Water Basin

CWCB is FEMA's Cooperating Technical Partner (CTP) for the state while Mile High Flood District (MHFD) is the CTP within their service area (Denver Metropolitan Area). CWCB provides support for and coordination with MHFD on projects and data sharing for communities that extend across common boundaries.

North Platte – No work being conducted in this area.

South Platte – Park, Gilpin, Boulder, Larimer, Weld, and Logan Counties have ongoing Risk MAP studies. Ongoing CWCB studies within the South Platte basin are as follows:

- Phillips County Phases 2-3: Floodplain Mapping approval just came in. Will follow with Resilience Meeting and Digital Flood Insurance Rate Map (DFIRM) production. Issuance of preliminary products anticipated for summer 2022.
- Base Level Engineering (BLE): BLE is a large-scale, automated approach to developing draft approximate (Zone A) flood risk datasets and floodplains in order to provide communities with an initial overview of the potential flood hazard at the local level. These datasets provide communities with best available information relative to flood hazard to assist with planning, risk awareness, and emergency management. Final BLE results meet FEMA requirements for Zone A floodplains; however, not all of the BLE results will become regulatory products.

- Park County: FEMA is currently reviewing the BLE/Discovery deliverable and we should have results in the next few weeks.
- Logan County: We are hoping to hold the Discovery meeting on March 3rd.
- Morgan, Adams, and Arapahoe Counties: LiDAR is finally available and the processing of BLE will complete soon. Morgan can begin scheduling for a Discovery meeting in March timeframe.
- Colorado Hazard Mapping Program (CHAMP) Physical Map Revisions: The CWCB was able to leverage funds from FEMA to continue several CHAMP studies through the FEMA regulatory process. CHAMP involved analyzing streams across seven counties in central and northeast Colorado and includes over 200 FIRM panel updates. The remaining counties being completed include Boulder, Gilpin, Weld, and Larimer.
 - Boulder County: There is one outstanding appeal that has been referred to a Scientific Review Panel for resolution (SRP). The SRP process is moving forward through National Building Science. They will take 60-days to select a pool of candidates. FEMA has 30 days to respond (so 90 days total). Once the SRP is assembled, they have to make determinations within 90 days. This process is anticipated to result in another 6-month delay before a final determination for the Boulder County study is issued.
 - Gilpin County: The Letter of Final Determination (LFD) was issued on 10/6/2021 as scheduled. New flood hazard maps will go effective in April 2022. We don't have any updates.
 - Weld County: This project was transferred to the FEMA PTS team for post-preliminary processing. The revised preliminary distribution is expected to occur on 2/23/2022. CWCB will assist impacted communities with additional outreach efforts as requested. The communities impacted by the revised preliminary Flood Insurance Rate Maps (FIRMs) will have a 30-day comment/review period to comment on any changes made to the mapping.
 - Larimer County: Revised preliminary map panels went out on 12/20/2021 and we are currently waiting on the notice to be published in the Federal Register and local newspaper before the 90-day appeal period can begin.

Colorado – Mesa, Eagle, Summit, and Garfield Counties have ongoing Risk MAP studies:

- Flood Risk Information System (Mesa County): We are expecting to review and provide feedback on the draft website for this Flood Risk Information System (FRIS) pilot project in the next few weeks. Staff and our Contractor will meet with the communities in Mesa County to showcase the system and obtain additional input before making the site live.
- City of Grand Junction Levee (Mesa County): Levee assessment reporting has been completed and we met with the City to review the preliminary assessment results and discuss options for addressing the levee as the Risk MAP study moves forward. No updates.

- Eagle County Physical Map Revision Phases 2-3: Our team is working to update the modeling and mapping to accommodate the communities' zero rise higher standard along the Roaring Fork River. These changes will require the issuance and distribution of revised products later this year.
- Garfield County Phase 2-3: We expanded the scope of work for data development (as requested by communities) in 2021. Work on the additional flooding sources has started, and associated field survey activities are underway.

Gunnison – Delta, Gunnison, Hinsdale, and Ouray Counties have ongoing studies:

- Delta County Phase 2-3. Floodplain mapping is underway and almost ready to submit for FEMA review.
- Ouray County: The preliminary product distribution took place on 2/17/2022. Communities are currently reviewing the preliminary products and the comment period will close in mid-March.
- Hinsdale Countywide BLE: We are still producing BLE hydraulic modeling and expect to have information ready for a Discovery meeting with communities in the next few weeks.
- Gunnison Countywide BLE: We are currently coordinating with communities to hold a Discovery meeting in mid-March.
- Upper Gunnison Watershed Phases 2-3: This project is being continued under new grants (since the original FY15 grant). State funding covered part of the original flood hazard information update, and now FEMA funding will supplement work as it moves into the post-preliminary phase of the project.
 - o Hinsdale County: Floodplain mapping for the flooding sources was approved by FEMA, Resilience meetings were held with communities. Distribution of preliminary products is anticipated for spring or summer 2022.
 - o Gunnison County: We will hold meetings with the communities (Flood Risk Review) in mid-March.

Rio Grande – Costilla and Mineral Counties have ongoing studies:

- Costilla County: There are still a few effective Zone A reaches that did not get re-studied in locations where there was no high-resolution LiDAR. Effective flood hazard information for these areas is still on paper maps, but will be updated once high-resolution LiDAR becomes available in early 2022. We may need to go through a revised preliminary distribution to include these streams since we cannot publish the mapping updates on partially restudied FIRM panels.
- Mineral County: There is an ongoing LOMR to revise Willow Creek flood hazard mapping and obtain levee accreditation for the existing levee within the City of Creede. We resubmitted the LOMR additional data request and it's currently under FEMA review.

Arkansas – Lake, Chaffee, Custer, Fremont, Pueblo, Teller, El Paso, Huerfano, Las Animas, Otero, Bent, and Prowers Counties have ongoing studies:

- Lake and Chaffee BLE: Lake's and Chaffee's BLE submittals have been approved by FEMA. The Lake County project will be moving forward with FY21 FEMA funding to comply with community-requested hydraulic modeling and floodplain mapping for an additional flooding source in Leadville. No major update.
- Custer BLE: Custer's Discovery meeting took place in late January. We are awaiting community review/comments in the next few weeks.
- Pueblo County BLE: Work on hydraulic modeling continues. We expect to have the Discovery meeting in the next few weeks.
- Huerfano Phase 2: Data development ongoing with hydrology underway. Surveying completed.
- Bent and Otero BLE (including the CHAMP 3 Phase 2 scope of work): The hydraulics submittal was approved, so we are moving forward with floodplain mapping. No major update.
- City of Las Animas (Bent County) Pre-Levee: The preliminary levee assessment reporting has been completed and results shared with the City. Our team is working with the City to determine how to account for the levee in the Risk MAP project. The City and County are currently coordinating with CWCB, FEMA and the USACE on required levee improvements.
- El Paso BLE/Phase 2 and Templeton Gap (T-Gap) pre-levee work: Hydrology and most surveying for data development (Phase 2) is wrapping up. El Paso County scoping issues have been resolved and a grant amendment for shifting existing funding to accommodate additional study reaches requested by the County is underway with FEMA. We submitted the updated BLE deliverable to FEMA for review. We are also working with FEMA to resolve an issue with a mapping tie-in between a Zone A and Zone AE study on Dry Creek.
- Teller County BLE/Phase 2: Still working on hydraulics. We may need to update the hydrology scope for certain areas with flow tie-in discrepancies exist at jurisdictional boundaries.
- Las Animas County Phase 2: MOAs came back signed. CWCB will need to pick up additional detailed Zone AE study scope for another small effective stream.
- Fremont County Phase 2: Data development work is underway, with the collection of field survey.
- Prowers County Phase 2: Survey received on 2/4. Our consultant is reviewing completeness and accuracy. We are preparing scope and fee for added miles (14 contracted vs 18.8 community-selected miles).
- Towns of Granada/Holly/Lamar (Prowers County) Pre-Levee assessments: We provided a checklist for the Town of Granada to work more easily through the levee certification and accreditation process. We are continuing support for all three communities with some

additional levee evaluation, Interior Drainage Analyses, and Emergency Action Plans through severance-funded Task Order.

Yampa/White –Moffat County has an ongoing Risk Map study:

- Moffat County: the hydraulics deliverable was submitted for review and we should hear back in the next few weeks.

San Miguel/Dolores/Animas/San Juan – La Plata, Dolores, Montezuma, Archuleta, San Juan, and the southern parts of Hinsdale and Mineral Counties, along with the Southern Ute Tribal nation, have ongoing studies:

- Animas Watershed Phases 3-4: San Juan, Archuleta, and La Plata were published in the December and January Federal Registers. The mandatory appeal period is anticipated to begin on February 21, 2022
- Southwest Colorado (Montezuma, Dolores, San Juan, La Plata, Archuleta, Hinsdale, and Mineral Counties) BLE: Countywide BLE data development is almost complete. Targeting holding Discovery meetings in April most likely.

Multi-Watershed Risk Map Projects:

- Elbert County BLE: Discovery meeting was held on 2/10/2022 and we will follow up with communities as soon as possible.
- Mesa County Phase 2: Surveying is almost complete (just have a couple more streams). Detailed hydrology submitted for review. Hydraulics underway. We will need to submit a Mapping Activity Statement revision soon due to changed scope of work with added streams.
- Colorado Hazard Mapping Program (CHAMP) Phase 3: This set of studies originated from the Colorado Senate Bill (15-245) which was put forth as a response to the destructive 2013 floods. This bill released funding to better assess and map various flood related hazards, including debris flows and erosion, throughout Colorado. As such, CWCB funded a paper inventory reduction effort through various counties across the state that were still using old paper floodplain maps and needed updated flood risk information, especially if they were affected by these floods and the local conditions were clearly changed. Several county projects that were scoped as part of this CHAMP effort are still ongoing, including the ones listed below.
 - o San Miguel County: This partial countywide project is still on hold pending as-built data for the completed phases of the Valley Floor Restoration project in the Town of Telluride. The Town is going to submit a LOMR for these improvements based on the effective mapping. The mapping project will require revised modeling and mapping of this area using the updated hydrology and hydraulic modeling with the as-built information. There will be

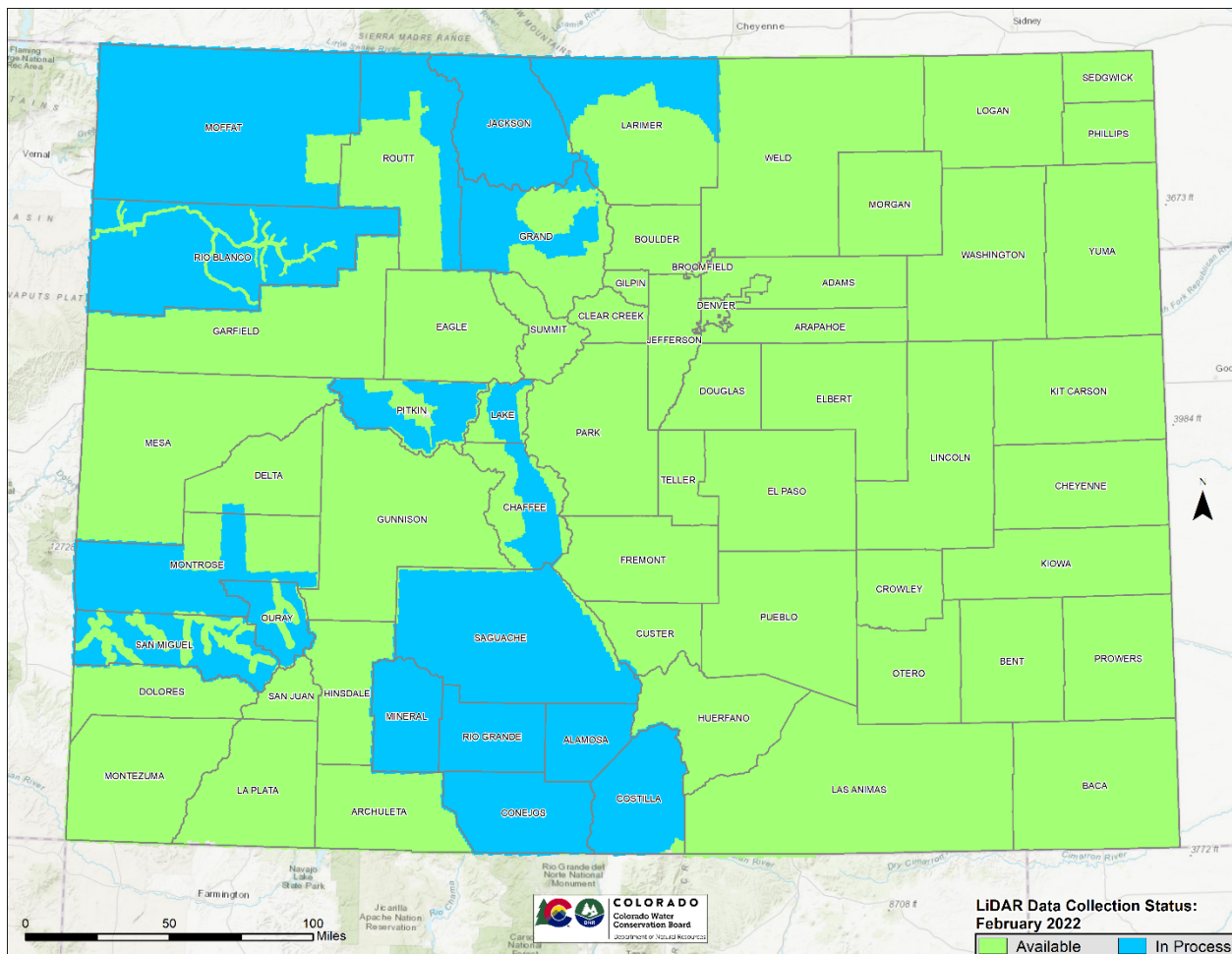
additional outreach and coordination with impacted communities in San Juan County due to the significant project delay. Then preliminary products will be developed.

- Lincoln County Phases 2-3: Significant coordination took place with FEMA on the 2D floodplain mapping. Got thumbs up for a couple issues discussed. Still working through the last few touches.
- Saguache County: This project requires developing alluvial fan modeling for the Town of Crestone area due to the complicated terrain and flooding patterns. Conversations taking place with the Watershed Protection Program and with others states dealing with alluvial fan modeling (with Utah CTP, FEMA Region 8, and stakeholders). We will have to coordinate on this further to ensure we don't provide analysis that would lead to burdensome regulatory restrictions on the community.

LiDAR acquisition: CWCB received \$3.4 million in a FEMA FY16 grant and \$2.2 million in FY18 for LiDAR acquisition in Colorado for future floodplain mapping and hazard assessment projects. The USGS is completing the last few areas in Colorado that were missing updated LiDAR.

- LiDAR collection tasks that were recently completed include the Eastern Colorado Plains data collection, led by the USGS, and the DRCOG LiDAR for the Denver Metropolitan Area. The rest of the state LiDAR is currently being acquired and going through final USGS QA-QC through 2022.
 - DRCOG area LiDAR is complete and was delivered in early February. Will remove this entry for the next board meeting updates.
 - San Luis Valley/San Miguel/Pitkin County area LiDAR - Final deliverables are in the works with USGS and could be in to The National Map in the next couple of months.
 - Eastern CO Plains: The project has been completed and uploaded to the National Map. Will remove this entry for the next board meeting updates.
 - Northwest CO Project: USGS likely won't have the final deliverables for this project area until summer or fall of 2022.

Below is the most recent status map for LiDAR data acquired in Colorado:



(Terri Fead and Marta Blanco Castano)

Stream Management Plan and Watershed-Based Plan Overlap

Stream Management Plans (SMPs) have been a priority activity in Colorado as a result of the 2015 Water Plan, which endeavors to set goals and measurable objectives for the future of Colorado's water. These are data-driven assessments of river health that help communities prioritize how to protect or enhance environmental and recreational assets in a given watershed. A well-developed SMP uses biological, hydrological, geomorphological, and other data to assess flows, water quality parameters, and other physical conditions that are needed to support collaboratively-identified environmental and/or recreational values.

SMPs, however, are not the only planning efforts happening at a watershed scale within the state. CDPHE also implements watershed-based planning, which is meant to help address the diffuse nature of non-point source pollution in a holistic approach by fully assessing potential causes and sources of pollution, then prioritizing restoration and protection strategies to implement best management

practices to improve water quality. These plans include the EPA 9 elements as the primary planning framework for Section 319 watershed projects to restore impaired waters.

I am currently working with CDPHE on how to integrate the required elements of SMPs with the EPA 9 elements required for 319 implementation funding. By identifying the similarities and differences between these two types of planning efforts, we can hopefully conserve funding and human resources by combining these efforts, where appropriate. There have been an increasing number of watershed planning efforts throughout the state that want to integrate these two types of planning, and having a solid understanding of how they relate will allow us to communicate early with these communities about how the two processes coincide.

Andrea Harbin Monahan

Fluvial Hazard Zone Program

In order to recognize and assess the hazards associated with erosion, sediment deposition, and other dynamic river processes, the CWCB has developed a technical protocol to help communities identify, map, and plan for natural fluvial hazards. The Fluvial Hazard Zone (FHZ) is the area a stream has occupied in recent history, may occupy in the future, or may physically influence as it stores and transports water, sediment, and debris. Fluvial geomorphic processes are natural phenomena within stream corridors and include commonly observed occurrences such as erosion, the transport and deposition of sediment, the recruitment and relocation of wood, and the structural influences of plants and animals. These processes become hazardous when they encounter public infrastructure, houses, businesses, and other investments within and adjacent to the stream corridor. These types of hazards caused by stream channel movement and the erosion and deposition of sediment within a stream corridor have not traditionally been factored into floodplain management, leaving a legacy of costly damage from flooding in Colorado. Since 1978, approximately 50% of NFIP claims in Colorado have come from properties located outside of the regulatory floodplains. Many of these property loss claims are the result of hazards created by fluvial geomorphic processes.

The processes that can occur within these FHZs can occur gradually over years or acutely during a flood event, and the primary objective of FHZ mapping is to identify areas that are vulnerable to fluvial geomorphic hazards and determine where avoidance and mitigation measures should be focused. FHZ mapping is a science-based method that can be used to define areas that are worthy of protection and where mitigation measures can be implemented to protect downstream infrastructure, and also to prioritize areas for restoration. The mapping effort is meant to identify areas that will:

- Accommodate erosion and deposition in river corridors, which will allow us to provide more accurate assessments of flood hazards and provide defensible delineations for site development and land use planning with the goal of reducing reliance on channelization, levees, and bank armoring and allow the river to move where it wants to move without risking life or property.
- Identify at-risk infrastructure and critical facilities within the FHZ, avoid the FHZ when repairing or replacing these facilities, and site new infrastructure in less hazardous areas within the river corridor.

- Identify areas for restoration and rehabilitation, which can be used to protect or improve water quality and critical habitat, and/or create recreational opportunities.
-

By defining the FHZ, communities can determine where the river has been, where it might go, and identify spaces that can act as critical areas in attenuating debris after flood events, which may be essential to protecting water supply if it is upstream of a diversion structure, reservoir, or other water supply infrastructure.

The CWCB has developed a [quick start guide](#) to provide communities, agencies, and organizations with guidance on how FHZ mapping can be incorporated into planning, disaster response, administration, and regulation. In addition, a [model ordinance](#) has been developed that provides suggested text for the establishment and regulation of an FHZ Overlay District. The specific language in the document can be tailored to meet a community's needs for integration into existing planning and regulatory mechanisms.

The State of Colorado's FHZ Program represents a significant and necessary step forward in adaptively managing stream corridors, preparing for and mitigating flood impacts, and making informed land use decisions based on an awareness of fluvial processes. Learn more at coloradofhz.com.

In 2022 and 2023 CWCB staff and technical consultants will further develop the FHZ program to support statewide floodplain management needs. Staff will provide guidance on connecting FHZ mapping to stream management planning, watershed restoration projects, and Wildfire Ready Watershed planning. The CWCB technical consultant team will produce guidance videos to support technical training as well as general support for communities seeking to work with FHZ maps. Finally the program will develop new guidance for infrastructure, land-use practices, and pre-and post-flood mitigation of fluvial hazards.

(Chris Sturm)

National Flood Insurance Program (NFIP) Community Assistance Program-State Support Services Element (CAP-SSSE) Coordinator

Town of Crestone Joins the National Flood Insurance Program (NFIP)

On January 4, 2022, the Town of Crestone became the 256th Colorado community to participate in the National Flood Insurance Program.

Efforts to enroll the community began in earnest following the completion of the Colorado RiskMAP hydraulic models, draft floodplain mapping, and flood risk review meeting in late 2020 and early 2021. Although the community had never had their flood risk mapped, they have experienced significant, damaging flooding as recently as 2019. The RiskMAP program identified not only the North Crestone Creek channel as a potential flooding source but also a considerable alluvial fan effecting the area.

The CWCB floodplain mapping team, FEMA Region VIII, and this office worked with the community to ensure their understanding of their identified flood risk and the benefits of participating in the NFIP.

Following a series of meetings, calls, and emails in late 2021, the community adopted a floodplain development ordinance, passed a resolution of intent to join the NFIP, and submitted the required application requesting inclusion in the program. Although the community's regulatory floodplain map is still a year or more away from being effective, the residents of Crestone are immediately able to take advantage of obtaining affordable, federally-backed flood insurance policies and the community now has the regulations in place to manage development in their flood prone areas, making for a safer and more resilient community.

Custer County and Incorporated Communities, NFIP & RiskMAP Workshop

On February 9, 2022, the CWCB flood mapping team and this office met with residents, staff, and elected officials of Custer County, the Town of Silver Cliff, and the Town of Westcliffe to discuss the National Flood Insurance Program (NFIP) and the flood Risk Mapping, Assessment, and Planning (RiskMAP) project currently underway in the county. The county and its incorporated communities are not participating in the NFIP at this time and CWCB took this opportunity to go into great detail about the purpose and process of floodplain mapping, provided preliminary mapping data and its impact on structures, and discussed the benefits of the NFIP and the role the community plays in flood hazard mitigation.

During the 3-hour meeting, CWCB staff and its mapping contractor answered numerous questions from the attendees and were encouraged by the community's receptiveness to the mapping information and how it might best be used in their community and emergency planning. Additional meetings are planned in the future as the RiskMAP project progresses.

(Doug Mahan)

WATER SUPPLY PLANNING SECTION UPDATES

The basin roundtables have finalized their Basin Implementation Plans as of early February 2022. CWCB appreciates the work of the roundtables and is excited to build off their important work as we develop the Water Plan update, which is still ongoing. Staff will be planning to roll out for the Water Plan on June 30, and will be seeking board input on ways to share the plan effectively to collect public comment. On February 2, 2022 the last meeting of the Water Equity Task Force was held, concluding a year-long effort to consult with this group of experts to develop a set of guiding principles on diversity, equity and inclusion that can be used in the Water Plan to guide future efforts. Also, in late February, meetings of both the Interbasin Compact Committee and the Public Education Participation and Outreach groups were held. The IBCC determined that they would form a new subcommittee to drive development of a clear work plan for the group moving forward. And finally, the Water Supply Planning Section has hired three new positions. Nora Flynn has joined as a Senior Agricultural Water Planning Specialist , Megan O’Grady has joined as a Senior Climate Adaptation Specialist, and Sam Stein has taken a new position as the team’s Conservation and Drought Specialist. CWCB is excited to have their expertise in house as we move forward on solving our future water challenges.

Water Supply Reserve Fund Grants Director's Report - March 2022

WATER SUPPLY RESERVE FUND GRANTS:

The following table summarizes the Water Supply Reserve Fund Grants \$50,000 and under that will be sent to the CWCB Director, Rebecca Mitchell, for approval.

Basin	Applicant/Grantee	Name of Water Activity	Basin(s) Account Request	Statewide Account Requests	Total Request	Funding Recommendation
Arkansas	Otero Ditch	Infrastructure Replacement	\$4,500	\$45,000	\$49,500	\$49,500
Metro	Brighton Ditch Company	South Platte River Bank Stabilization Project	\$12,500	\$0	\$25,000	\$25,000
South Platte			\$12,500			
Metro	Trout Unlimited	Abandoned Mine Land Environmental Restoration to Improve Outdoor Education Landscapes in Colorado	\$25,000	\$0	\$50,000	\$50,000
South Platte			\$25,000			
Metro	Colorado Watershed Assembly	Clear Creek Targeted Outreach & Education for High-Priority Projects	\$25,000	\$0.00	\$25,000.00	\$25,000
Metro	South Evergreen Metro District	Reservoir 4 Drainage Improvements	\$25,000	\$0	\$25,000	\$25,000
South Platte	Boulder Watershed Collective	Boulder Creek Headwaters Assessment	\$50,000	\$0	\$50,000	\$50,000
Southwest	Animas Watershed Partnership	Stream Management Plan	\$20,525	\$0	\$20,525	\$20,525
Yampa/White/Green	Pothook Water Conservancy District	Interstate Conflict Reduction and Consumptive Use Accountability in the Little Snake River Basin	\$10,000	\$16,100	\$26,100	\$26,100

**Water Supply Reserve Fund
Water Activity Summary Sheet
CWCB Director Report**

Applicant & Grantee: Otero Ditch
Water Activity Name: Infrastructure Replacement
Water Activity Purpose: Agricultural - Implementation
County: Otero
Drainage Basin: Arkansas River
Water Source: Otero Ditch/Arkansas River
Amount Requested: \$4,500 Arkansas Basin Account
\$45,000 Statewide Account
\$49,500 Total Request

Matching Funds: **Basin Account Match = \$4,500**
• 10% of statewide request (meets 10% min)
Applicant % 3rd Party Match (cash & in-kind) = \$41,420
• 92% of the statewide request (meets 40% min)
Total Match (Basin request & Applicant Match) = \$45,920
• 102% of the statewide request (meets 50% min)

Staff Recommendation:
Staff recommends approval of up to \$4,500 from the Arkansas Basin Account and \$45,000 from the Statewide Account to help fund the project: Infrastructure Replacement

Water Activity Summary: Approximately 54 yards of the Otero ditch culvert is deteriorating. This drain carries water near its waste gate structure and if it completely collapses, 61 gates, nearly the whole ditch will go unserved. This is an important piece of the water delivery system for the Otero ditch and is in need of repair.

If approved, WSRF funds would be used to replace aging infrastructure in the ditch as well as help to update ditch water deliveries information to an online database platform such as Google to ensure that records are being backed up and can calculate delivery of water.

Discussion: This project supports the goals of the Colorado Water Plan and the Arkansas Basin Roundtable Implementation plan by maintaining current water supplies and preventing future water supply gaps from increasing and implementing efficiency and conservation measures to maximize beneficial use and production.

Issues/Additional Needs: No issues or additional needs have been identified.

Eligibility Requirements: The application meets requirements of all eligibility components.

Evaluation Criteria: Staff has determined this activity satisfies the Evaluation Criteria.

Funding Sources/Match	Cash	In-Kind	Total	Status
Otero Ditch	\$35,220	\$6,200	\$41,420	Secured
Sub-Total Matching Funds	\$0	\$0	\$0	
WSRF Arkansas Basin Account	\$4,500	\$0	\$4,500	Secured
WSRF Statewide Account	\$45,000	\$0	\$45,000	
Total Project Costs	\$84,720	\$6,200	\$90,920	

CWCB Project Manager: Rachel Pittinger

**Water Supply Reserve Fund
Water Activity Summary Sheet
Director's Report**

Applicant & Grantee: Brighton Ditch Company

Water Activity Name: South Platte River Bank Stabilization Project

Water Activity Purpose: Agricultural, Municipal/Industrial, Nonconsumptive
(Environmental & Recreational) - Study

County: Adams

Drainage Basin: South Platte River

Water Source: South Platte River

Amount Requested: \$12,500 Metro Basin Account
\$12,500 South Platte Basin Account
\$25,000 Total Request

Matching Funds: **Total Match (Applicant & 3rd Party Match) = \$68,700**
(cash)

- 73% of the total project cost (meets 25% min)

Staff Recommendation:
Staff recommends approval of up to \$12,500 from the Metro Basin Account, and up to \$12,500 from the South Platte Basin Account to help fund the project: South Platte River Bank Stabilization Project

Water Activity Summary: If approved, the Brighton Ditch Company would use WSRF funds to advance the design of the “South Platte River Bank Stabilization Project” adjacent to the Brighton Ditch Diversion Dam. The dam diverts 18,675 acre-feet of water for agricultural and industrial uses, supplies water to over 2,200 acres of farmland and provides a backwater condition that supplies water to a Brighton water intake structure. This intake structure provides 3,500 acre-feet of municipal augmentation water to Ken Mitchell Park Storage Cell #1.

South Platte River flooding in June 2015 overtopped the banks and created a new channel which bypassed the Brighton Diversion Dam and adversely impacted the Brighton intake structure. The applicant constructed an emergency coffer dam to block the bypass channel and the City of Brighton rebuilt the intake structure along the east bank. The City of Aurora owns an adjacent 60 inch water transmission line, which was endangered by the change in channel course. Aurora installed sheet pile and riprap to protect its pipeline.

The preliminary project design will extend sheet pile protection across the bypass channel to the dam, replace the riprap coffer dam with an overflow weir to safely pass flood flows, and place stream barbs along the upstream bank to prevent further erosion and enhance riparian habitat. The stream barb design will consider not only local hydraulics but more importantly will minimize sedimentation at the Brighton Water Intake. The applicant has

also applied for a Water Plan Grant to combine with private funds to help advance the preliminary design to a construction ready design.

Discussion: The proposal aligns with the goals in the South Platte Basin Implementation Plan by enhancing water-based recreation at Ken Mitchell Park by protecting the area from flood damage as well as advancing multi-purpose water supply projects and sustaining irrigated agriculture.

Issues/Additional Needs: No issues or additional needs have been identified.

Eligibility Requirements: The application meets requirements of all eligibility components.

Evaluation Criteria: Staff has determined this activity satisfies the Evaluation Criteria.

Funding Sources/Match	Cash	In-Kind	Total	Status
Brighton Ditch Company	\$34,350	\$0	\$34,350	Secured
City of Brighton	\$34,350	\$0	\$34,350	Secured
Sub Total Matching Funds	\$68,700	\$0	\$68,700	
WSRF Metro Basin Account	\$12,500	\$0	\$12,500	Secured
WSRF South Platte Basin Account	\$12,500	\$0	\$12,500	Secured
Sub Total WSRF Funds	\$25,000	\$0	\$25,000	
Total Project Costs	\$93,700	\$0	\$93,700	

CWCB Project Manager: Cole Bedford

**Water Supply Reserve Fund
Water Activity Summary Sheet
Director's Report**

Applicant & Grantee: Trout Unlimited

Water Activity Name: Abandon Mine Land Environmental Restoration to Improve Outdoor Education Landscapes in Colorado

Water Activity Purpose: Nonconsumptive (Environmental), Education & Outreach - Study

County: Boulder

Drainage Basin: South Platte River

Water Source: Castle Gulch, St Vrain River

Amount Requested: \$25,000 Metro Basin Account
\$25,000 South Platte Basin Account
\$50,000 Total Request

Matching Funds: **Total Match (Applicant & 3rd Party Match) = \$21,750 (cash)**

- 30% of the total project cost (meets 25% min)

Staff Recommendation:
Staff recommends approval of up to \$25,000 from the Metro Basin Account, and up to \$25,000 from the South Platte Basin Account to help fund the project: Abandon Mine Land Environmental Restoration to Improve Outdoor Education Landscapes in Colorado

Water Activity Summary: The applicant seeks to address environmental degradation and downstream water quality impacts associated with three abandoned mines on Balarat Outdoor Education Center lands while also supporting educational opportunities at these sites.

The Balarat Outdoor Education Center (the Center) is a 750-acre, Denver Public School District-owned facility that is located above the Town of Jamestown. The Center currently serves as a unique outdoor education facility whose staff provide educational and recreational programs for thousands of students of Denver Public Schools.

If approved, WSRF funding will go towards construction of site-specific reclamation solutions, including surface water controls, erosion controls and native revegetation at each mine site; totaling 5.5 acres of habitat improvements. WSRF funds will also provide for restoration of 1,563 feet of channel through streambank stabilization with native vegetation. These environmental improvements will address sediment and water quality issues in Castle Gulch, a tributary to the Saint Vrain.

Finally, WSRF funding will be used to create and install innovative site signage at each mine that will allow students to learn about area ecology and mine history. The applicant hopes

the proposed approach will promote engagement opportunities for visiting students while promoting resiliency and recovery of the landscape.

Discussion: This project aligns with Water Plan and South Platte Basin Implementation Plan goals including: Enhancing environmental and recreational economic values; Protecting healthy environments; Promoting, protecting and restoration of water quality; Protecting and restoring critical watersheds; and advancing education, outreach and innovation.

Issues/Additional Needs: No issues or additional needs have been identified.

Eligibility Requirements: The application meets requirements of all eligibility components.

Evaluation Criteria: Staff has determined this activity satisfies the Evaluation Criteria.

Funding Sources/Match	Cash	In-Kind	Total	Status
Freeport McMoRan	\$9,000	\$0	\$9,000	Secured
Newport Mining	\$2,500	\$0	\$2,500	Secured
St Vrain Colorado Trout Unlimited	\$0	\$1,500	\$1,500	Secured
Private Donations	\$8,750	\$0	\$8,750	Secured
Sub Total Matching Funds	\$21,750	\$0	\$21,750	
WSRF Metro Basin Account	\$25,000	\$0	\$25,000	Secured
WSRF South Platte Basin Account	\$25,000	\$0	\$25,000	Secured
Sub Total WSRF Funds	\$50,000	\$0	\$50,000	
Total Project Costs	\$71,750	\$0	\$71,750	

CWCB Project Manager: Ben Wade

**Water Supply Reserve Fund
Water Activity Summary Sheet
March 15-16, 2022
Director's Report**

Applicant & Grantee: Colorado Watershed Assembly

Water Activity Name: Clear Creek Targeted Outreach & Education for High-Priority Projects

Water Activity Purpose: Education & Outreach - Implementation

County: Clear Creek, Gilpin & Jefferson

Drainage Basin: South Platte

Water Source: Clear Creek

Amount Requested: \$25,000 Metro Basin Account
\$25,000 Total Request

Matching Funds: **Total Match** (Applicant Match) = \$34,000 (cash)
• 57% of the total project costs (meets 25% min)

Staff Recommendation:	
Staff recommends approval of up to \$25,000 from the Metro Basin Account to help fund the project: Clear Creek Targeted Outreach & Education for High-Priority Projects	

Water Activity Summary: The Clear Creek Watershed & Forest Health Partnership formed to coordinate wildfire risk mitigation efforts & funds in the Clear Creek watershed to implement risk-reduction projects across the drainage area. A number of partners are water providers with vulnerable supplies and infrastructure in the basin, and other partners include county governments, fire authorities, and other land-use entities (e.g. Gilpin County Extension office, Jefferson County Open Space, CSFS, USFS, etc.)

If approved, WSRF funds would be used for the Partnership's education and outreach goals, including materials for organizing outreach, materials for conducting outreach, & building the partnership's presence in the community through collaboration with other watershed & wildfire groups, regular communication with stakeholders (newsletter), and scoping implementation of high-priority projects so the applicant can determine appropriate match funds and partners for future grant applications.

Discussion: This project meets objectives of the Colorado Water Plan and the South Platte Basin Implementation Plan. The Partnership was founded as a locally based watershed organization with the mission to engage in collaborative, cross-jurisdictional planning and implementation of wildfire risk mitigation and forest health projects within the Clear Creek watershed. The South Platte Basin Implementation Plan identifies Clear Creek as a source watershed of importance.

Issues/Additional Needs: No issues or additional needs have been identified.

Eligibility Requirements: The application meets requirements of all eligibility components.

Evaluation Criteria: Staff has determined this activity satisfies the Evaluation Criteria.

Funding Sources/Match	Cash	In-Kind	Total	Status
City of Golden	\$17,000	\$0	\$17,000	Secured
City of Westminster	\$17,000	\$0	\$17,000	
Sub-Total Matching Funds	\$34,000	\$0	\$34,000	
WSRF Metro Basin Account	\$25,000	\$0	\$25,000	Secured
Sub Total	\$25,000	\$0	\$25,000	
Total Project Costs	\$59,000	\$0	\$59,000	

CWCB Project Manager: Andrea Harbin-Monahan

**Water Supply Reserve Fund
Water Activity Summary Sheet
March 15-16, 2022
Director's Report**

Applicant & Grantee: South Evergreen Water District
Water Activity Name: Reservoir 4 Drainage Improvements
Water Activity Purpose: Agricultural, Municipal/Industrial - Implementation
County: Jefferson
Drainage Basin: South Platte
Water Source: North Turkey Creek & Reservoir 4
Amount Requested: \$25,000 Metro Basin Account
\$25,000 Total Request

Matching Funds: **Total Match** (Applicant Match) = \$15,000 (cash)
• 37.5% of the total project costs (meets 25% min)

Staff Recommendation:
Staff recommends approval of up to \$25,000 from the Metro Basin Account to help fund the project: Reservoir 4 Drainage Improvements

Water Activity Summary: In 2020, a new liner was installed in the applicant's 5 acre feet Reservoir 4 to eliminate a significant leakage problem. The repair of this reservoir was strongly recommended by the State of Colorado Division of Water Resources. In the spring of 2021, an unforeseen lifting of the liner happened along the southwest bank. This was due to heavy spring rains and Jefferson County cleaning three of its nonfunctioning culverts directly above our reservoir. The water table in the reservoir's west bank rose to two feet above the reservoir water level creating a huge pressure on the water liner. The existing under liner drainage system was overburdened by the excessive amount of water on the west bank and approximately 200 feet of liner lifted to the reservoir's surface. To relieve the pressure, the applicant dug a 164 foot pressure-relief trench and the liner gradually settled back into place. The applicant has hired a civil engineering company to design an additional drainage system along the entire west bank.

If approved, WSRF funds will be to help pay for Phase 1 of this project, which will cover the installation of 164 feet of drainage trench from the reservoir's southern-most end to a new manhole as shown in the attached application. Completing phase 1 will also allow the applicant to cover the present open-pressure relief trench which could be considered a safety hazard.

Discussion: This project meets objectives of the Colorado Water Plan and the South Platte Basin Implementation Plan by preserving storage and store water for the purpose of reuse. Phase 1 of this project will help to address groundwater issues the cause the liner failure.

Issues/Additional Needs: No issues or additional needs have been identified.

Eligibility Requirements: The application meets requirements of all eligibility components.

Evaluation Criteria: Staff has determined this activity satisfies the Evaluation Criteria.

Funding Sources/Match	Cash	In-Kind	Total	Status
South Evergreen Water District	\$15,000	\$0	\$15,000	Secured
Sub-Total Matching Funds	\$15,000	\$0	\$15,000	
WSRF Metro Basin Account	\$25,000	\$0	\$25,000	Secured
Sub Total	\$25,000	\$0	\$25,000	
Total Project Costs	\$40,000	\$0	\$40,000	

CWCB Project Manager: Ben Wade

**Water Supply Reserve Fund
Water Activity Summary Sheet
Director's Report**

Applicant & Grantee: Boulder Watershed Collective

Water Activity Name: Boulder Creek Headwaters Assessment

Water Activity Purpose: Education & Outreach, Nonconsumptive (Environmental & Recreational) - Study

County: Boulder & Gilpin

Drainage Basin: South Platte River

Water Source: North, Middle, South Boulder Creeks

Amount Requested: \$50,000 South Platte Basin Account
\$50,000 Total Request

Matching Funds: **Total Match (Applicant & 3rd Party Match) = \$23,910 (\$**

- 25.2% of the total project costs (meets 25% min)

Staff Recommendation:
Staff recommends approval of up to \$50,000 from the South Platte Basin Account to help fund the project: Boulder Creek Headwaters Assessment

Water Activity Summary: The headwaters of North, Middle and South Boulder Creeks are drinking water sources for numerous metro municipalities including the cities of Boulder, Arvada, Lafayette, Erie and Denver Water. Due to the watershed's vicinity to the metro area the headwater mountains and streams are popular with recreationalists. Headwater areas are also heavily impacted by climate change resulting in impacts from drought, decreased snowpacks and stream flows and wildfire risk. Protecting and restoring headwater ecosystems is critical for building resilient watersheds that support water supply, habitat connectivity, healthy forests, and resilient communities.

If approved, WSRF funds would be used to conduct an study of headwater meadow systems which can be integrated into the robust forest restoration planning that is currently occurring. This project proposes prioritization and assessment of high-altitude meadows, water quality and benthic macroinvertebrate sampling and a bioblitz in the Rollins Pass area of South Boulder Creek. The project will promote community conservation through participatory science, education, and volunteer opportunities.

Discussion: The South Platte Basin Roundtable approval states this project supports priorities in the South Platte Basin Implementation Plan by recognizing that nonconsumptive recreation and environmental uses are critical aspects of Colorado's economy and quality of life. Assessing and monitoring activities are components of being responsive to recreational growth along the Front Range and land management decisions.

Issues/Additional Needs: No issues or other additional needs have been identified.

Eligibility Requirements: The application meets requirements of all eligibility components.

Evaluation Criteria: Staff has determined this activity satisfies the Evaluation Criteria.

Funding Sources/Match	Cash	In-Kind	Total	Status
Boulder Watershed Collective	\$12,000	\$0	\$12,000	Secured
Colorado Natural Heritage Program	\$0	\$5,411	\$5,411	Secured
CWCB WSRF Grant	\$20,664	\$0	\$20,664	Secured
Volunteer Time	\$0	\$6,500	\$0	Secured
Sub Total Matching Funds	\$32,664	\$11,911	\$44,575	
WSRF South Platte Basin Account	\$50,000	\$0	\$50,000	Secured
Sub Total WSRF Funds	\$50,000	\$0	\$50,000	
Total Project Costs	\$82,664	\$11,911	\$94,575	

CWCB Project Manager: Ben Wade

work with the Roundtable, committees and management as the lead to create the outline, content, and design of the website and be the main contact with the web designer.

This grant will also support the efforts of implementing the Educational and Outreach Goals for the SWBRT Basin Implementation Plan through Education to Action Projects/Programs.

Discussion: This project is in alignment with Colorado Water Plan and the Southwest Basin Implementation Plan goals and objectives to educate the public on specific water related issues. The proposal also supports the Basin's Education Action Plan priority to provide water education for constituents in the region.

Issues/Additional Needs: No issues or additional needs have been identified.

Eligibility Requirements: The application meets requirements of all eligibility components.

Evaluation Criteria: Staff has determined this activity satisfies the Evaluation Criteria.

Funding Sources/Match	Cash	In-Kind	Total	Status
SW Basin Roundtable Committee Members	\$0	\$2,800	\$2,800	Secured
Sub-Total Matching Funds	\$0	\$2,800	\$2,800	
WSRF Southwest Basin Account	\$8,600	\$0	\$8,600	Secured
Total Project Costs	\$8,600	\$2,800	\$11,400	

CWCB Project Manager: Ben Wade

**Water Supply Reserve Fund
Water Activity Summary Sheet
CWCB Director Report**

Applicant & Grantee: Animas Watershed Partnership (San Juan Resource Conservation & Development is the grantee)

Water Activity Name: Stream Management Plan for the Animas River - Phase 1

Water Activity Purpose: Agricultural, Education & Outreach, Municipal/Industrial, Nonconsumptive (Environmental & Recreational) - Study

County: La Plata & San Juan

Drainage Basin: Southwest Basin

Water Source: Animas River

Amount Requested: \$20,525 Southwest Basin Account
\$20,525 Total Request

Matching Funds: **Basin Account Match** = \$2,800 (in-kind)

- 25% of Total Project Cost (meets 25% min)

Staff Recommendation:
Staff recommends approval of up to \$20,525 from the Southwest Basin Account to help fund the project: Stream Management Plan for the Animas River - Phase 1

Water Activity Summary: The applicant proposes convening a steering committee and stakeholder group to facilitate a community-led process to assess water needs and develop a Stream Management Plan (SMP) for the Animas River Basin. The Southwest Basin Roundtable's Basin Implementation Plan (BIP) identifies a significant gap in information necessary to understand and protect environmental and recreational water needs.

This project will address the identified information gap by tackling the first step in the process: community engagement, the development of a stakeholder group and a review of existing data and information. Envisioned as a multi-phase process, the ultimate purpose of the proposed project is to initiate the SMP process to integrate values and seek opportunities to preserve the Animas Basin streams and their uses with wide-ranging community support and decisions based on current, relevant science and assessments.

The outcomes this proposal will be: Establishing an organized stakeholder group, led by a steering committee, with the structure, capacity and collective interest in pursuing a coordinated SMP; a review of current data and information; a work plan for moving forward with a stream assessment and SMP planning.

Discussion: This project is in alignment with Colorado Water Plan's goal to cover 80% of the locally prioritized lists of rivers with stream management plans. The project also supports the Southwest Basin Implementation Plan goals and objectives to promote dialogue, foster cooperation and resolve conflict among water interests, maintaining watershed health, meeting recreation and environmental water needs and preserve water quality.

Issues/Additional Needs: No issues or additional needs have been identified.

Eligibility Requirements: The application meets requirements of all eligibility components.

Evaluation Criteria: Staff has determined this activity satisfies the Evaluation Criteria.

Funding Sources/Match	Cash	In-Kind	Total	Status
Southwestern Water Conservation District	\$16,420	\$0	\$2,800	Pending
Animas Watershed Partnership	\$2,400	\$0	\$2,400	Secured
Mountain Studies Institute	\$0	\$2,000	\$2,000	Secured
Animas River Community Forum	\$0	\$5,000	\$5,000	Secured
Community Stakeholder Participation	\$0	\$2,000	\$2,000	Secured
Sub-Total Matching Funds	\$18,820	\$9,000	\$27,820	
WSRF Southwest Basin Account	\$20,525	\$0	\$20,525	Secured
Total Project Costs	\$39,345	\$9,000	\$48,345	

CWCB Project Manager: Andrea Harbin-Monahan

**Water Supply Reserve Fund
Water Activity Summary Sheet
March 15-16, 2022
Director's Report**

Applicant & Grantee: Pothook Water Conservancy District

Water Activity Name: Interstate Conflict Reduction & Consumptive Use Accountability in the Little Snake River Basin

Water Activity Purpose: Agricultural, Education & Outreach, Needs Assessment, Nonconsumptive (Environmental), Other - Study

County: Moffat County

Drainage Basin: Yampa River

Water Source: Little Snake River

Amount Requested: \$10,000 Yampa/White/Green Basin Account
\$16,100 Statewide Account
\$26,100 Total Request

Matching Funds: **Basin Account Match = \$10,000**

- 62% of statewide request (meets 10% min)

Applicant & 3rd Party Match = \$27,200 (\$2,500 cash & \$24,700 In-kind)

- 169% of the statewide request (meets 40% min)

Total Match (Basin request & Applicant Match) = \$37,200

- 231% of the statewide request (meets 50% min)

Staff Recommendation:
Staff recommends approval of up to \$10,000 from the Yampa-White-Green Basin Account and up to \$16,100 from the Statewide Account to help fund the project: Interstate Conflict Reduction & Consumptive Use Accountability in the Little Snake River Basin

Water Activity Summary: This proposed water project would provide data for decision making in agricultural water deliveries to Colorado water users of the Pothook Water Conservancy District in the inter-state Little Snake River basin and promote equitable deliveries from the Little Snake River to all irrigators in the Savery-Little Snake River Water Conservancy District. The data collected will contribute to a growing database of river flows and diversions in the basin as part of a long-term study to improve decision making capabilities and better understand the dynamics of infiltration, percolation and seepage within the drainage basin relative to irrigation practices.

If approved, WSRF funds will be used to: Purchase and install a stage height discharge meter with the ability to transmit real time data through telemetry at the Trowel Diversion; purchase a stream flow meter, velocity sensor, and wading rod for rating curve development and remote, variable location discharge measurements; and contribute to a 2022 study to assess the Savery-Little Snake River Water Conservancy District's delivery

infrastructure, identify natural and man-made hydrologic vectors for return flows, develop or improve rating curves for measuring devices, and better quantify consumptive and non-consumptive use within the District.

Discussion: The proposed project aligns with Yampa-White-Green Basin Implementation Plan goals including: Protecting the Basin from compact curtailment of existing decreed water uses and some increment of future uses; protecting and encouraging agricultural uses of water in the Basin within the context of private property rights; improve agricultural water supplies to increase irrigated land and reduce shortages; restore, maintain and modernizing water storage and distribution infrastructure; developing an integrated system of water use, storage, administration and delivery to reduce water shortages and meet environmental and recreational needs; and providing for multiple beneficiaries.

Issues/Additional Needs: No issues or additional needs have been identified.

Eligibility Requirements: The application meets requirements of all eligibility components.

Evaluation Criteria: Staff has determined this activity satisfies the Evaluation Criteria.

Funding Sources/Match	Cash	In-Kind	Total	Status
Pothook Water Conservancy District	\$2,000	\$11,000	\$13,000	Secured
Savery-Little Snake River Water Conservancy Dist.	\$500	\$12,200	\$12,700	Secured
Little Snake River Conservation District	\$0	\$1,500	\$1,500	Secured
Sub-Total Matching Funds	\$2,500	\$24,700	\$27,200	
WSRF Yampa-White-Green Basin Account	\$10,000	\$0	\$10,000	Secured
WSRF Statewide Account	\$16,100	\$0	\$16,100	
Total Project Costs	\$31,600	\$24,700	\$53,300	

CWCB Project Manager: Ben Wade



COLORADO

Colorado Water Conservation Board

Department of Natural Resources

1313 Sherman Street, Room 718
Denver, CO 80203

P (303) 866-3441
F (303) 866-4474

Jared Polis, Governor

Dan Gibbs, DNR Executive Director

Rebecca Mitchell, CWCB Director

TO: Rebecca Mitchell, CWCB Director

FROM: Anna Porter, Ben Wade, Chris Sturm, Cole Bedford, Kevin Reidy, Matt Stearns, Nora Flynn

DATE: February 25, 2022

SUBJECT: Water Plan Grant - Project Recommendations

Staff Recommendation:

Staff recommends Director approval for the projects listed in the following tables regarding Colorado's Water Plan Grant funding.

Agricultural Projects			
Applicant	Project Name	Grant Request Amount	Staff Recommendation
a. San Luis Valley Water Conservancy District	Rio Grande Basin Snow Measurement Enhancement	\$45,000	Approve \$45,000
Total Recommended for Approval			\$45,000

Conservation & Land Use Planning			
Applicant	Project Name	Grant Request Amount	Staff Recommendation
b. Four Corners Office for Resource Efficiency (4CORE)	4CORE Laundry to Landscape	\$25,247	Approve \$25,247
c. Fort Collins - Loveland Water District	Water Efficiency Plan Update 2022	\$30,000	Approve \$30,000
d. Fraser, CO	Town of Fraser Water Efficiency Plan	\$37,500	Approve \$37,500
Total Recommended for Approval			\$92,747

Engagement & Innovation Activities			
Applicant	Project Name	Grant Request Amount	Staff Recommendation
e. Friends of Youth & Nature	Watershed Education for Youth	\$8,330	Approve \$8,330



f. Mosquito Range Heritage Initiative	Water Education and Outreach	\$10,000	Approve \$10,000
g. Arkansas River Basin Water Forum	Arkansas River Basin Water Forum 2022 Education and Outreach Event	\$20,935	Approve \$17,125
h. Town of Mountain Village	Community Engagement & Education: Smart Irrigation Controls and Irrigation System Assessments	\$17,900	Approve \$17,900
i. H2O Media, Ltd. (d/b/a H2O Radio)	H2O Radio Website Redevelopment	\$18,187.50	Approve \$18,187.50
j. Theodore Roosevelt Conservation Partnership	Enhanced public engagement and education campaign on Colorado Water, River Basins (Rio Grande Focus) and the Water Plan	\$50,000	Approve \$40,100
Total Recommended for Approval			\$111,642.50

Water Storage & Supply			
Applicant	Project Name	Grant Request Amount	Staff Recommendation
k. Silverton, Town of	Kendall Mountain Alluvial Aquifer Test Drilling Program	\$63,797	Approve \$33,995
l. Fort Lyon Canal Company	Fort Lyon Water Sharing	\$50,000	Approve \$50,000
Total Recommended for Approval			\$83,995

Watershed Restoration & Recreation			
Applicant	Project Name	Grant Request Amount	Staff Recommendation
m. High Country Conservation Advocates	Gunnison	\$30,000	Approve \$30,000
n. Middle Colorado Watershed Council	Middle Colorado Integrated Water Management Plan - Implementation Phase 2	\$52,703	Approve \$39,203
Total Recommended for Approval			\$69,203

Background:

See links to applications for project summaries.





COLORADO

**Colorado Water
Conservation Board**

Department of Natural Resources
1313 Sherman Street, Room 718
Denver, CO 80203

March 1, 2022

Re: Water Plan Grant Approvals

Dear Anna Porter, Ben Wade, Chris Sturm, Cole Bedford, Kevin Reidy, Matt Stearns,
Nora Flynn:

I am pleased to inform you that I have approved staff recommendations for the grants listed in the memo: Water Plan Grant Recommendation for Director Level Approvals - March 2022 - dated February 25, 2022.

Sincerely,

Rebecca Mitchell, Director
Colorado Water Conservation Board



Water Plan Grants Director's Report - March 2022

WATER PLAN GRANTS:

The following table summarizes the approved Water Plan Grants \$50,000 and under.

Applicant	Project Name	Grant Request Amount	Staff Recommendation
Agricultural			
a. San Luis Valley Water Conservancy District	Rio Grande Basin Snow Measurement Enhancement	\$45,000	Approve \$45,000
Conservation & Land Use			
b. Four Corners Office for Resource Efficiency (4CORE)	4CORE Laundry to Landscape	\$25,247	Approve \$25,247
c. Fort Collins - Loveland Water District	Water Efficiency Plan Update 2022	\$30,000	Approve \$30,000
d. Fraser, CO	Town of Fraser Water Efficiency Plan	\$37,500	Approve \$37,500
Engagement & Innovation			
e. Friends of Youth & Nature	Watershed Education for Youth	\$8,330	Approve \$8,330
f. Mosquito Range Heritage Initiative	Water Education and Outreach	\$10,000	Approve \$10,000
g. Arkansas River Basin Water Forum	Arkansas River Basin Water Forum 2022 Education and Outreach Event	\$20,935	Approve \$17,125
h. Town of Mountain Village	Community Engagement & Education: Smart Irrigation Controls and Irrigation System Assessments	\$17,900	Approve \$17,900
i. H2O Media, Ltd. (d/b/a H2O Radio)	H2O Radio Website Redevelopment	\$18,187.50	Approve \$18,187.50
j. Theodore Roosevelt Conservation Partnership	Enhanced public engagement and education campaign on Colorado Water, River Basins (Rio Grande Focus) and the Water Plan	\$50,000	Approve \$40,100

Storage & Supply			
k. Silverton, Town of	Kendall Mountain Alluvial Aquifer Test Drilling Program	\$63,797	Approve \$33,995
l. Fort Lyon Canal Company	Fort Lyon Water Sharing	\$50,000	Approve \$50,000
Water-Sharing Agreements			
m. High Country Conservation Advocates	Gunnison	\$30,000	Approve \$30,000
n. Middle Colorado Watershed Council	Middle Colorado Integrated Water Management Plan - Implementation Phase 2	\$52,703	Approve \$39,203
Total Recommended for Approval			\$402,587.50

INSTREAM FLOW ATTACHMENTS

Director's Report Attachment – March 15-16, 2022 CWCB Meeting Stream and Lake Protection Section De Minimis Cases

The following table summarizes applications that have the potential to injure the Board's instream flow water rights, but the impact is considered de minimis. In these cases, the cumulative impact to the Board's right is less than 1%. Pursuant to ISF Rule 8(e) (the de minimis rule), staff has not filed a Statement of Opposition in these cases and has provided the required notification to the Division Engineers and applicants.

Applicant Case No.	Water Division	Applicant	Stream name/ CWCB Case no.	ISF Amount (cfs)	Individual Injury (%)	Cumulative % Injury	Count
21CW3213	1	James and Karen Faydenko, et al	Cub Creek 94CW251	2 (4/15 - 6/30) 0.75 (7/1 - 4/14)	0.01350 0.03590	0.62696 1.11869	11
21CW3213	1	James and Karen Faydenko, et al	Bear Creek 94CW259	5 (10/16 - 4/14) 9.9 (4/15 - 10/15)	0.00270 0.00540	0.37813 0.57943	34
21CW3213	1	James and Karen Faydenko, et al.	Bear Creek 94CW260	14.9 (4/1 - 10/15) 7 (10/16 - 3/31)	0.00180 0.00380	0.38528 0.67091	53
21CW0038	4	Adam Clarkson	Uncompahgre River 98CW222	20 (10/15 - 4/30) 65 (5/1 - 10/14)	0.00020 0.00060	0.28483 0.12020	6
21CW3078	4	Aspen Leaf Ranch, Inc, a Colorado Corporation	West Muddy Creek 84CW411	2 (1/1 - 12/31)	0.03670 0.02260	0.03670 0.02260	1
21CW3154	5	Peyton, James And Laura	Fraser River 90CW308B	30 (5/15 - 9/15) 19 (9/16 - 5/14)	0.00080 0.00130	0.03667 0.04099	16

**March 15-16, 2022 Board Meeting
Instream Flow and Natural Lake Level Program
Summary of Resolved Legal Protection Cases**

The Board's Instream Flow ("ISF") Rule 8i(1) states:

In the event the pretrial resolution includes terms and conditions preventing injury or interference and does not involve a modification, or acceptance of injury or interference with mitigation, the Board is not required to review and ratify the pretrial resolution. Staff may authorize its counsel to sign any court documents necessary to finalize this type of pretrial resolution without Board ratification.

Staff has resolved issues of potential injury in the following water court cases, using two different mechanisms. Staff: (A) stipulated in eight cases in which CWCB had filed a Statement of Opposition; and (B) obtained agreements via letters-in-lieu of filing Statements of Opposition in six cases; and (C) sent courtesy notice letters in two cases to Applicant and the Division Engineer's Office to point out potential exemptions pursuant to §§37-92-102(3)(b), and 37-92-502(2)(c) C.R.S.

A. STATEMENTS OF OPPOSITION

(1) Case No. 20CW3165 (Water Division 1) - Application of Board of County Commissioners of the County of Clear Creek and Clear Creek School District RE-1

The Board ratified this Statement of Opposition at its March 2021 meeting. Applicant filed a Third Amendment to its Plan for Augmentation. Staff, in cooperation with the Attorney General's Office, has negotiated a settlement to ensure that the CWCB's ISF water rights will not be injured. This case remains pending before the water court Referee.

The CWCB holds ISF water rights, including the following, in Water Division 1 in the Upper South Platte watershed that could be injured by this application:

Case Number	Stream	Upper Terminus	Lower Terminus	CFS Rate (Dates)	Approp. Date
94CW0258	Bear Creek	confl Truesdell Creek	inlet Evergreen Lake	10 (4/15 - 10/15) 5 (10/16 - 4/14)	09/13/1994
94CW0259	Bear Creek	outlet Evergreen Lake	confl Swede Gulch	5 (10/16 - 4/14) 9.9 (4/15 - 10/15)	09/13/1994
94CW0260	Bear Creek	confl Swede Gulch	hdgt Harriman Ditch	14.9 (4/1 - 10/15) 7 (10/16 - 3/31)	09/13/1994

In addition to standard terms regarding measuring devices, accounting and retained jurisdiction, the Applicant has agreed to the following additional protective terms and conditions:

- "The Exchange Project shall operate only at times when there is exchange potential in the Exchange Project Reach. Exchange potential will exist when the operation of the Exchange Project will not deprive any water right senior to November 2, 2020 that is operating within the Exchange Project

Reach of water lawfully available to such senior water right, including other exchanges with a decreed priority senior to the priority of the Exchange Project decreed herein.”

- “Instream Flows: Under § 37-92-102(3)(b), C.R.S., CWCB and the School District recognize that CWCB’s instream flow water rights, decreed in Case Nos. 94CW258, 94CW259, and 94CW260, are subject to the Exchange Project decreed herein to replace well pumping depletions to Witter Gulch in the amount of 0.0148 cfs at the Harriman Ditch headgate, as this operation was in place prior to September 13, 1994, and such uses were therefore a present use of water pursuant to appropriations or practices in existence on the date of the instream flow appropriations. The recognition of the Exchange Project, under § 37-92-102(3)(b), C.R.S., will not interfere with the administration of CWCB’s instream flow water rights in-priority as against other water rights and will not constitute a general subordination of the CWCB’s instream flow water rights to any other junior water rights.”
- “No other amendments. Except as provided herein, the Augmentation Plan will continue to operate under its existing terms and conditions. Where provisions of the Augmentation Plan decrees are inconsistent with the amendments described herein, those provisions are revised to the extent necessary to implement the amendments set forth in this Decree. No change of the Warrior Half Share, 80CW289 Exchanges, or the exchanges decreed in the 09CW041 Decree are approved in this Decree.”

(2) Case No. 21CW3018 (Water Division 1) - Application of St. Vrain & Left Hand Water Conservancy District

The Board ratified this Statement of Opposition at its May 2021 meeting. Applicant filed an Amendment to its Plan for Augmentation. Staff, in cooperation with the Attorney General’s Office, has negotiated a settlement to ensure that the CWCB’s ISF water rights will not be injured. This case remains pending before the water court Referee. A Motion for Entry of Decree was filed with the Court on February 22, 2022.

The CWCB holds many ISF water rights in Water Division 1 in the St. Vrain watershed that could have been injured by this application:

In addition to standard terms regarding measuring devices, accounting and retained jurisdiction, the Applicant has agreed to the following additional protective terms and conditions:

- “If a water right is decreed or lawfully available for augmentation use and not already approved for such use in this plan for augmentation, the District shall give at least sixty-three (63) days advance written Notice of Use of Water Right (“Notice”) to the Court, the Division Engineer, and all Objectors hereto and in Case No. 02CW334 which shall describe: (i) the water right(s) by name and decree, if any; (ii) the annual and monthly amount of water available to the District from the water right(s); (iii) the location or locations at which the water will be delivered to the stream, together with identification of any associated depletive reach (from the point of depletion to the point of replacement); (iv) evidence that the claimed amount of water will not be used by another person; (v) the manner in which the District will account for use of the augmentation and/or replacement water; (vi) evidence that the use of the water or water right is consistent with the underlying decree

for the water right; (vii) the proposed date of initial use of the proposed new source(s) within this plan for augmentation; and (viii) the anticipated duration of use of the new source(s)."

- "To the extent the District adds a downstream replacement source, either through approval by the Division Engineer or the Court, which results in a newly depleted reach of stream, a new exchange reach is created. Any such new exchange reach shall be operated as an undecreed administrative exchange until it has been adjudicated with a priority date by the Court."

(3) Case No. 19CW3129 (Water Division 5) - Application of Grand County Water & Sanitation District No. 1

The Board ratified this Statement of Opposition at its March 2020 meeting. Applicant sought appropriative rights of exchange, conditional water storage right, and a plan for augmentation. Staff, in cooperation with the Attorney General's Office, has negotiated a settlement to ensure that the CWCB's ISF water rights will not be injured. This case remains pending before the water court Referee.

The CWCB holds ISF water rights, including the following, in Water Division 5 in the Colorado River Headwaters watershed that could be injured by this application:

Case Number	Stream	Upper Terminus	Lower Terminus	CFS Rate (Dates)	Approp. Date
80CW0446, 447, 448	Colorado River	hdgt Windy Gap Project div	confl Williams Fork River	90, 135, & 150 (1/1 - 12/31)	07/08/1980
90CW0302, 307, 308, & 315	Fraser River	confl Jim Creek	confl Colorado River	6-30 (5/15 - 9/15) 3.5-19.0 (9/16 - 5/14)	11/27/1990
90CW0318	Vasquez Creek	hdgt Denver Water Board div	hdgt Grand County div	6 (5/15 - 9/15) 3 (9/16 - 5/14)	11/27/1990

In addition to standard terms regarding measuring devices, accounting and retained jurisdiction, the Applicant has agreed to the following additional protective terms and conditions:

- "The CWCB holds instream flow ("ISF") water rights located on the Fraser River or the Colorado River. Implementation of the augmentation plan decreed herein shall account for and augment the ISF water rights as required and as set forth below.
 - At such times as, and to the extent that: (a) the District is diverting water in excess of the District's HUP Water Rights (directly or pursuant to the District's HUP Green Mountain Reservoir Exchange); (b) the District's Windy Gap exchange decreed in Case No. 84CW455, Water Division No. 5, cannot be operated; and (c) a call is made by a CWCB ISF water right that is senior to the District's water right OR a call is made by a CWCB ISF water right that is senior to the exchange operation under the augmentation plan for the District's water right invoked in response to a downstream senior water right call, the District shall:
 - For calls of the CWCB's ISF water right decreed in Case No. 90CW302 (on the Fraser River from Jim Creek to Vasquez Creek), that are located below the District's point of diversion for the Grand County Water and Sanitation District Pipeline No. 3, curtail diversions of the Grand County Water and Sanitation District Pipeline No. 3.

- For calls of the CWCB's ISF water rights decreed in the following cases, the District's depletions, calculated in accordance with paragraph 11.6.8 above, shall be replaced at or upstream of the administered call: Case No. 90CW307 (on the Fraser River from Vasquez Creek to St. Louis Creek); Case No. 90CW315 (on the Fraser River from St. Louis Creek to Ranch Creek); Case No. 90CW308 (on the Fraser River from Ranch Creek to the Colorado River); Case No. 80CW447 (on the Colorado River from Windy Gap to Williams Fork); Case No. 80CW446 (on the Colorado River from Williams Fork to Troublesome Creek); and Case No. 80CW448 (on the Colorado River from Troublesome Creek to the Blue River)."

(4) Case No. 19CW3143 (Water Division 5) - Application of The Basalt Water Conservancy District

The Board ratified this Statement of Opposition at its March 2020 meeting. Applicant sought confirmation of appropriative right of exchange to storage and approval of plan for augmentation, including appropriative rights of exchange. Staff, in cooperation with the Attorney General's Office, has negotiated a settlement to ensure that the CWCB's ISF water rights will not be injured. This case remains pending before the water court Referee.

The CWCB holds ISF water rights, including the following, in Water Division 5 in the Roaring Fork River watershed that could be injured by this application:

Case Number	Stream	Upper Terminus	Lower Terminus	CFS Rate (Dates)	Approp. Date
W-1945(1973)	Fryingpan River	immediately below confl Rocky Fork	confl Roaring Fork River	39 (11/1 - 4/30) 110 (5/1 - 10/31)	7/12/1973
W-1948(1973)	Upper Fryingpan River	immediately below confl Marten Creek	immediately above confl SF Fryingpan River	6 (10/1 - 3/31) 12 (4/1 - 9/30)	7/12/1973
W-1952(1973)	Ivanhoe Creek	hdgt Fry-Ark Project div	confl Fryingpan River	1 (10/1 - 3/31) 2 (4/1 - 9/30)	07/12/1973
W-1955(1973)	Fryingpan River	confl NF Fryingpan River	confl Ruedi Reservoir	30 (10/1 - 3/31) 200 (6/1 - 6/30) 150 (5/1 - 5/31) 100 (4/1 - 4/30) 100 (7/1 - 7/31) 75 (8/1 - 8/31) 65 (9/1 - 9/30)	07/12/1973
85CW639	Roaring Fork River	confl Fryingpan River	confl Crystal River	75 (10/1 - 3/31) 145 (4/1 - 9/30)	11/8/1985

In addition to standard terms regarding measuring devices, accounting and retained jurisdiction, the Applicant has agreed to the following additional protective terms and conditions:

- "Settlement Agreement. BWCD is a party to an Agreement and Intergovernmental Agreement executed in 2018 among BWCD; the City of Aurora, Colorado, acting by and through its Utility

Enterprise (“Aurora”); Busk-Ivanhoe, Inc.; Colorado River Water Conservation District; Board of County Commissioners of Eagle County; Board of County Commissioners of Pitkin County; Grand Valley Water Users Association; Orchard Mesa Irrigation District; and Ute Water Conservancy District (the “Settlement Agreement”).

- “Terms and Conditions – CWCW Instream Flows. Applicant recognizes that the Colorado Water Conservation Board’s existing instream flow water rights decreed in Cases Nos. W-1948-73 and W-1955-73 on the Fryingpan River and W-1952-73 on Ivanhoe Creek were decreed prior to the filing of the Application in this case. Applicant shall not operate its Appropriative Right of Exchange into Storage described in paragraph 7 above when any of these decreed instream flow water rights is not fully satisfied and being administered within the described Exchange Reach so as to prevent injury to these instream flow water rights. Applicant shall replace all out-of-priority depletions from the augmented structures operated pursuant to the plan for augmentation confirmed herein at or above the point of depletion on the Fryingpan River or Ivanhoe Creek when one of these identified instream flow water rights is not fully satisfied and being administered as necessary to prevent injury to such instream flow water rights pursuant to this plan for augmentation.”

(5) Case No. 20CW3185 (Water Division 5) - Application of Cornerstone Winter Park Holdings, LLC; Byers Peak Properties, LLC; Byers Peak Downhill Properties, LLC; C. Clark Lipscomb; and Meredith C. Lipscomb; Colorado Adventure Park LLC

The Board ratified this Statement of Opposition at its March 2021 meeting. Applicant sought a change of water right. Staff, in cooperation with the Attorney General’s Office, has negotiated a settlement to ensure that the CWCW’s ISF water rights will not be injured. This case remains pending before the water court Referee. A Proposed Ruling was filed with the Court on January 29, 2022

The CWCW holds ISF water rights, including the following, in Water Division 5 in the Colorado Headwaters watershed that could be injured by this application:

Case Number	Stream	Upper Terminus	Lower Terminus	CFS Rate (Dates)	Approp. Date
90CW0316	Saint Louis Creek	confl King Creek	hdgt Tyron Ditch div	3.5 (9/16 - 5/14) 6 (5/15 - 9/15)	11/27/1990
90CW0315	Fraser River	confl St Louis Creek	confl Ranch Creek	11 (9/16 - 5/14) 17 (5/15 - 9/15)	11/27/1990
90CW0308	Fraser River	confl Ranch Creek	confl Crooked Creek	17 (5/15 - 9/15) 11 (9/16 - 5/14)	11/27/1990
90CW0308	Fraser River	confl Crooked Creek	confl Colorado River	30 (5/15 - 9/15) 19 (9/16 - 5/14)	11/27/1990
80CW0446-448	Colorado River	hdgt Windy Gap Project div	confl Blue River	Varies 90-135 (1/1 - 12/31)	07/08/1980

In addition to standard terms regarding measuring devices, accounting and retained jurisdiction, the Applicant has agreed to the following additional protective terms and conditions:

- “Applicants’ operation of the claimed water right shall not impound the flow of St. Louis Creek. Applicants’ operation of the claimed water right must allow the instream flow amounts of 3.5 c.f.s.

(9/16-5/14) and 6 c.f.s. (5/15-9/15), decreed in Case No. 90CW316, pass at all times, and Applicant's operation of the right must not adversely affect the instream flow rights. Additionally, Applicants' operation of the claimed water right must allow flows released to the stream to implement portions of the Colorado River Cooperative Agreement under Case No. 11CW152 to pass at all times.

- Applicants' operation of the claimed water right must not divert water outside of the banks of St. Louis Creek and must not impound water for the hydro-electrical generation use. Additionally, Applicants' operation of the claimed water right shall be non-consumptive, and shall not result in depletions to St. Louis Creek.
- Upon filing an Application to make the claimed water right absolute, Applicants shall provide design details of the final design of the proposed energy generation facility, including stream depth requirements of the facility, to the CWCB. Such design shall allow for fish passage."

(6) Case No. 19CW3017 (Water Division 6) - Application of Yellow Jacket Water Conservancy District

The Board ratified this Statement of Opposition at its November 2019 meeting. Applicant sought a change of water right (change in place of storage and change of use). Staff, in cooperation with the Attorney General's Office, has negotiated a settlement to ensure that the CWCB's ISF water rights will not be injured. This case remains pending before the water court Referee. A proposed Ruling of the Referee was filed by Applicant on February 25, 2022.

The CWCB holds ISF water rights, including the following, in Water Division 6 in the Upper White watershed that could be injured by this application:

Case Number	Stream	Upper Terminus	Lower Terminus	CFS Rate (Dates)	Approp. Date
W-3652E(1977) (Decreed in Div. 5 Court)	Big Beaver Creek	outlet Lake Avery Res	confl White River	2 (1/1 - 12/31)	11/15/1977
W-3652C(1977) (Decreed in Div. 5 Court)	White River	confl NF & SF White River	confl Piceance Creek	200 (1/1 - 12/31)	11/15/1977

In addition to standard terms regarding measuring devices, accounting and retained jurisdiction, the Applicant has agreed to the following additional protective terms and conditions:

- "Any use of the augmentation water by exchange or otherwise in a way that causes upstream out-of-priority depletions with downstream augmentation supply cannot occur if any intervening instream flow water right is not met.
- Lake Avery is owned and operated by CPW. Applicant does not currently have permission to access or use CPW land, facilities, or structures associated with Lake Avery or to store water in Lake Avery and this decree does not grant any such access. Applicant agrees to obtain CPW's voluntary and written consent prior to accessing, using, or constructing structures on land owned by CPW and prior to storing any water in Lake Avery, which consent may, inter alia, require Applicant to enter into an agreement with CPW related to the operations of Lake Avery prior to storing any water in Lake Avery. CPW agrees to process Applicant's request for authorization and operations agreement in accordance with applicable laws, rules, and regulations."

- “Applicant requests to change the uses to add augmentation and to add piscatorial uses within and below Lake Avery. Such uses are limited to activities occurring within the District’s boundaries.
 - The Lake Avery Storage Right shall not be released and used for piscatorial purposes below Lake Avery absent the following: (1) an agreement with the CWCB for instream flow use or other piscatorial use, including but not limited to instream flow use on Big Beaver Creek and the White River decreed in Case Nos. (77)W3652E and (77)W3652C to preserve the natural environment to a reasonable degree up to the decreed rates; and (2) for any piscatorial use downstream of Lake Avery that is not pursuant to the decrees in Case Nos. (77)W3652E and (77)W3652C, a subsequent judicial or administrative approval defining the reach within and the rates at which such use will occur.
 - Augmentation use may only occur pursuant to and consistent with terms and conditions of an existing or future Water Court decree or administrative approval that allows for such augmentation use. Prior to any use of the subject water right in a decreed augmentation plan for which CWCB would not otherwise receive notice, the applicant must provide the CWCB notice that the subject water right will be used in the augmentation plan.”

(7) & (8) Case Nos. 19CW3035 & 3036 (Water Division 6) - Application of Harvey and Seaton Cattle Co., LLC

The Board ratified this Statement of Opposition at its March 2020 meeting. In Case No. 19CW3035, Applicant requested approval of a plan for augmentation, including change of water rights. In Case No. 19CW3036, Applicant sought a surface water right and water storage right. Staff, in cooperation with the Attorney General’s Office, has negotiated settlements in both cases to ensure that the CWCB’s ISF water rights will not be injured. Applicant filed Proposed Rulings in both cases on February 14, 2022.

The CWCB holds ISF water rights, including the following, in Water Division 6 in the White River watershed that could be injured by this application:

Case Number	Stream	Upper Terminus	Lower Terminus	CFS Rate (Dates)	Approp. Date
W-3652C(1977) (Decreed in Div. 5 Court)	White River	confl NF & SF White River	confl Piceance Creek	200 (1/1 - 12/31)	11/15/1977

In addition to standard terms regarding measuring devices, accounting and retained jurisdiction, the Applicant has agreed to the following additional protective terms and conditions:

- Case No. 19CW3035:
 - “Historically, 20% of the water diverted under the Subject Water Rights was lost to ditch seepage before being delivered for irrigation of the dried-up acreage. After accounting for ditch seepage losses, historical return flows from the dried-up acreage is equal to 80% of water historically delivered to irrigate the dried-up acreage. In order to replace historical return flows, Applicant shall measure and deliver to Strawberry Creek from Strawberry Pond an amount equal to 63% of the amount of the Subject Water Rights diverted by Applicant for delivery to Strawberry Pond, or, alternatively, bypass 63% of the Subject Water Rights at the Niblock Ditch headgate (in either case, up to a maximum of 0.309 cfs).”

- “Applicant shall provide to the Division Engineer notice and a map identifying the 8-acre parcel of land that will be dried up under this plan for augmentation on or before March 1st of each year. Applicant shall demonstrate to the satisfaction of the Division Engineer that the land removed from irrigation is not sub-irrigated. If the dry up is not accomplished in a particular irrigation season, then Applicant’s HCU credits will be reduced commensurately in its accounting.”
- Case No. 19CW3036:
 - “Unless diversions are made under a future approved augmentation plan or substitute supply plan that quantifies depletions under that right, Applicant may not divert the Niblock Ditch, Strawberry Enlargement during times when the CWCB’s instream flow water right decreed in Case No. W-3652C is not met below the Niblock Ditch headgate and is being administered by the Division Engineer. Unless otherwise demonstrated in such a future approved augmentation plan or substitute water supply plan, all diversions under the Niblock Ditch, Strawberry Enlargement shall be considered 100% consumptive to the White River.”
 - “Applicant shall measure, track and provide accounting for water diverted in priority under the water rights described in the First and Second claims versus the water delivered into the structure from the Niblock Ditch when the Strawberry Pond is being used as an irrigation control structure.”
 - “As a requirement to maintain the Niblock Ditch, Strawberry Enlargement right and the fill rate for the Strawberry Pond right or to make any portion of those water rights absolute for that filing for diligence, Applicant shall demonstrate that the claimed 3.0 cfs is reasonably necessary for freshening flows without waste and identify whether a recirculation system and/or aeration system has been installed for the Strawberry Pond. As a requirement to make any portion of those water rights absolute, Applicant shall further demonstrate that the amount of water claimed to be made absolute has been applied to beneficial use without waste. The decreed flow rate for the Niblock Ditch, Strawberry Enlargement right and rate of fill for the Strawberry Pond shall be reduced to the amount Applicant has demonstrated is reasonably necessary for freshening flows without waste. If Applicant ever installs a recirculation system for the Strawberry Pond, the decreed flow rate for the Niblock Ditch, Strawberry Enlargement right and rate of fill for the Strawberry Pond shall be reduced to the flow rate required to turn over the as-built pond volume once every 10 days.”

B. LETTER-IN-LIEU

The following cases were resolved by Staff through negotiated letters in lieu of filing water court Statements of Opposition. This method of settlement is preferred when facts and time allow such negotiation before the Statement of Opposition period ends. In each case, CWCB staff will continue to monitor the proposed rulings and decrees. In each case, Applicant has agreed to not oppose a motion to intervene if the agreed upon terms are not included. The following cases were negotiated to resolution:

(1) Case No. 21CW3229 (Water Division 1) - Application of East Larimer County Water District

During the December 2021 Water Court Resume Review, CWCB staff identified concerns regarding potential injury to CWCB's ISF water rights decreed in Case Nos. W-9255(1978) on Trap Creek and 85CW0419 on the Cache la Poudre River. This case was resolved with CWCB by a letter agreement, dated February 24, 2022, by which CWCB agreed not to file a statement of opposition, provided Applicant incorporates the following terms and conditions into any draft and final decrees and Applicant agrees to not oppose a motion to intervene by CWCB if such terms and conditions are not included:

- Within paragraph 11:
"Use pursuant to agreements with third-parties to replace historical return flows and augment out-of-priority depletions occurring outside the Applicants' respective service areas, as they exist now or may be expanded in the future, shall only occur pursuant to a future water court decree or a substitute water supply plan approved pursuant to section 37-92-308, C.R.S., or successor statutes."
- Paragraph 33.1.XX:
"ELCO APOS operation shall not deprive any other decreed water right [FN2], including exchanges, of water it would have legally been entitled to beneficially use and would have been put to such beneficial use were it not for ELCO's APOS operation."
 - FN2:
The phrase "any other decreed water right" as used in this paragraph includes the CWCB instream flow water rights on the Cache La Poudre River, decreed in Case Nos. 85CW422, 85CW425, 85CW419, and 87CW270.
- Paragraph 34.6:
"ELCO shall limit operation of its exchanges to times when there is exchange potential in the exchange reach. For purposes of this limitation, exchange potential shall exist when the operation of ELCO's exchanges would not deprive any water right [FN3] within the exchange reach, including other exchanges, with a priority senior to ELCO's exchanges decreed herein ("Intervening Senior") of water that such Intervening Senior is then legally entitled to exchange, divert or store in priority."
 - FN3. The phrase "any water right" as used in this paragraph in the definition of "Intervening Senior" includes CWCB instream flow water rights on the Cache La Poudre River, decreed in Case Nos. 85CW422, 85CW425, 85CW419, and 87CW270.

(2) Case No. 21CW3072 (Water Division 4) - Application of Double RL Company

During the December 2021 Water Court Resume Review, CWCB staff identified concerns regarding potential injury to CWCB's ISF water rights decreed in Case No. 84CW0423 on West Fork Dallas Creek. This case was resolved with CWCB by a letter agreement, dated February 25, 2022, by which CWCB agreed not to file a statement of opposition, provided Applicant incorporates the following terms and conditions into any draft and final decrees and Applicant agrees to not oppose a motion to intervene by CWCB if such terms and conditions are not included:

- "By this Second Enlargement, Applicant claims the right to beneficially use when in-priority the surface, seep, spring, and other inflows that collect in the Cronenberg Ditch. When this Second Enlargement is out-of-priority or not needed for irrigation and stock purposes, Applicant will return these inflows into an unnamed tributary of West Fort of Dallas Creek, tributary to the

West Fork of Dallas Creek, at the location shown on the map attached as Exhibit A, without beneficial use."

- "The Cronenberg Ditch was in existence and captured the subject inflows for beneficial use before the CWCB's instream flow water rights were appropriated on the West Fork of Dallas Creek in Case No. 84CW423 and on Dallas Creek in Case No. 98CW234. Therefore, the Cronenberg Ditch Second Enlargement is a use of water to which the instream flow rights are subject pursuant to C.R.S. § 37-92-102(3)(b). While the CWCB's instream flow rights decreed in Case Nos. 84CW423 and 98CW234 are subject to the Cronenberg Ditch Second Enlargement water right decreed herein, the rights will be administered under the prior appropriation system in relation to all other water rights. Administration of this provision shall not result in a general subordination of the CWCB instream flow water rights to any other water rights."

(3) Case No. 21CW3157 (Water Division 5) - Application of Galloway, Inc., d/b/a Blue Valley Ranch

During the December 2021 Water Court Resume Review, CWCB staff identified concerns regarding potential injury to CWCB's ISF water rights decreed in Case Nos. 11CW0159, 11CW0160, and 11CW0161 on the Colorado River, and 87CW0299 on the Blue River. This case was resolved with CWCB by a letter agreement, January 25, 2022, by which CWCB agreed not to file a statement of opposition, provided Applicant incorporates the following terms and conditions into any draft and final decrees and Applicant agrees to not oppose a motion to intervene by CWCB if such terms and conditions are not included:

- "The Colorado Water Conservation Board ("CWCB") has an instream flow water right on the Blue River decreed in Case No. 87CW299 for 60 cfs between May 1st and July 15th and 85 cfs between July 16th and April 30th ("Blue River ISF Right"). When the Blue River ISF Right is not met and is being administered in the short reach between the BVR Fish Hatchery Diversion and the Fish Hatchery Return Flow, Applicant will replace (i) the full amount of diversions from Green Mountain Reservoir upstream of the BVR Fish Hatchery Diversion; or (ii) pump the Hatchery Return Flow to a point at or above the BVR Fish Hatchery Diversion and replace only the Hatchery Depletions."

(4) Case No. 21CW3162 (Water Division 5) - Application of James and Michele Cardamone

During the December 2021 Water Court Resume Review, CWCB staff identified concerns regarding potential injury to CWCB's ISF water rights decreed in Case Nos. W-2939(1976) on West Sopris Creek, W-2951(1976) on Sopris Creek and 85CW0639 on the Roaring Fork River. This case was resolved with CWCB by a letter agreement, dated February 28, 2022, by which CWCB agreed not to file a statement of opposition, provided Applicant incorporates the following terms and conditions into any draft and final decrees and Applicant agrees to not oppose a motion to intervene by CWCB if such terms and conditions are not included:

- "Local call #1: In the event of a local call on Sopris Creek, Applicants shall replace out-of-priority depletions from the Cardamone Well with releases from the Cardamone Pond, as described above, back to West Sopris Creek (upstream of the confluence of West Sopris Creek and Sopris

Creek). Transit losses may be assessed by the Division Engineer as appropriate depending on the channel in which the pond will release water back to West Sopris Creek.”

- “Local call #2: In the event of a local call on West Sopris Creek below the Cardamone Ditch, Applicants shall cease all diversions into the Cardamone Pond to prevent depletions to West Sopris Creek in the reach between the Cardamone Ditch headgate and the stream accrual point for pond release. At such time, Applicants shall cease outdoor irrigation from the Cardamone Well and shall replace indoor use well depletions by releasing previously stored Cardamone Pond water.”
- “Applicants shall not operate the Cardamone Exchanges through the Roaring Fork River, Sopris Creek, or West Sopris Creek exchange reaches when any of the following instream flow water rights are unsatisfied and the stream is being administered: West Sopris Creek, Sopris Creek, or the Roaring Fork River as decreed in Case Nos. W-2939(76), W-2951(76), 85CW639, and 85CW646, respectively. This does not prevent Applicants from utilizing their BWCD Allotment Contract to provide required replacement water to satisfy a call from any of the referenced instream flow water rights, at or above such calling water rights.”

(5) Case No. 21CW3168 (Water Division 5) - Application of Arch Angel 2003 Trust

During the December 2021 Water Court Resume Review, CWCB staff identified concerns regarding potential injury to CWCB’s ISF water rights decreed in Case No. W-1945 (1973) on the Fryingpan River. This case was resolved with CWCB by a letter agreement, dated February 25, 2022, by which CWCB agreed not to file a statement of opposition, provided Applicant incorporates the following terms and conditions into any draft and final decrees and Applicant agrees to not oppose a motion to intervene by CWCB if such terms and conditions are not included:

- The following sentence will replace the last sentence of the second paragraph of Application Section 7(C) (as and where such paragraph is included in the proposed ruling and decree):
 - “Should a senior call located downstream of the ponds occur outside of those periods, refill diversions to the Arch Angel Pond No. 2 will be curtailed at the spring, and Arch Angel Pond No. 1 will be administered (lowered) by its evaporation rate via a low-level outlet.”
- The following sentence will be included as a provision of the augmentation plan or exchange:
 - “Applicant will not operate the exchanges through the Fryingpan River or the Roaring Fork River at times when the Division Engineer administers a call by the Colorado Water Conservation Board for its instream flow rights on the Fryingpan River, decreed in Case No. W-1945, or on the Roaring Fork River, decreed in Case No. 85CW639, respectively.”

(6) Case No. 21CW3044 (Water Division 6) - Application of Matt Brennan

During the November 2021 Water Court Resume Review, CWCB staff identified concerns regarding potential injury to CWCB’s ISF water rights decreed in Case Nos. W-3652C(1977) on the White River. This case was resolved with CWCB by a letter agreement, dated January 26, 2022, by which CWCB

agreed not to file a statement of opposition, provided Applicant incorporates the following terms and conditions into any draft and final decrees and Applicant agrees to not oppose a motion to intervene by CWCB if such terms and conditions are not included:

- "Applicant's cumulative diversions from the new point of diversion, as decreed herein, along with all diversions at the original point of diversion, shall not exceed the amount of water legally and physically available at the original point of diversion."
- "The alternate point of diversion for 1.3 cfs will be used in the same place of use and for the same types of use as the historical use, and as the original decree allows."

C. LETTER to APPLICANT and DIVISION ENGINEER'S OFFICE- NO OTHER ACTION TAKEN

CWCB staff sent a letter to the Applicant and the Division Engineer's Office ("DEO") in the following cases, for the purpose of notifying the Applicant and the DEO that some of the claimed water rights might qualify for C.R.S §37-92-102(3)(b) exemptions to priority water rights administration against some of CWCB's instream flow water rights.

(1) Case No. 21CW3226 (Water Division 1) - Application of Donald Brian Sweany and Karla Kay Sweany

In the letter, CWCB offered the following decree term, which has been accepted by the Applicant and by the Division Engineer:

"The Sweany Pond storage water right as decreed herein was a present use in existence for the claimed uses at the time of the CWCB's instream flow water rights appropriation on Box Elder Creek, decreed in Case No.16CW3174. Therefore, pursuant to C.R.S. §37-92-102(3)(b), Applicant will not be required to curtail the Sweany Pond storage right to satisfy an administered CWCB call for the Case No. 16CW3174 instream flow water right."

(2) Case No. 21CW0007 (Water Division 5) - Application of Thomas W. Bieser and Tammi J. Beiser

In the letter, CWCB offered the following decree term:

"The Bieser Ditch #2 and Bieser Spring water rights as decreed herein were a present use in existence for the claimed uses at the time of the CWCB's instream flow water rights appropriations on Mesa Creek, decreed in Case No.85CW637A and Plateau Creek, decreed in Case No. 86CW226. Therefore, pursuant to C.R.S. § 37-92-102(3)(b), Applicant will not be required to curtail the Bieser Ditch #2 and Bieser Spring water rights to satisfy an administered CWCB call for the Case Nos. 85CW637A and 86CW226 instream flow water rights."



COLORADO

**Colorado Water
Conservation Board**

Department of Natural Resources

1313 Sherman Street
Denver, CO 80203

P (303) 866-3441
F (303) 866-4474

Jared Polis, Governor

Dan Gibbs, DNR Executive Director

Rebecca Mitchell, CWCB Director

TO: Colorado Water Conservation Board Members

FROM: Kirk Russell, P.E., Finance Section Chief

Board Meeting: March 15-16, 2022 Board Meeting

Directors Report: Water Project Loans
Interest Rates

Introduction

The CWCB establishes interest rates bi-monthly for the Water Project Loan Program (per Financial Policy #7).

The current rates for a 30-year term are as follows:

- 1.15% - Agricultural
- 1.60% - Low-income Municipal
- 1.85% - Middle-income Municipal
- 2.10% - High-income Municipal
- 6.00% - Commercial
- 2.00% - Hydroelectric

The standard loan term is 30 years. Rates are reduced by 0.25% for 20-year loans, and by 0.55% for 10-year loans. Rates are increased by 0.25% for 40-year loans.

The rates can also be found on the CWCB web site under the “Loans and Grants” tab. These rates will be applicable for loans presented at this Board meeting.





COLORADO

**Colorado Water
Conservation Board**

Department of Natural Resources

1313 Sherman Street, Room 718
Denver, CO 80203

P (303) 866-3441
F (303) 866-4474

Jared Polis, Governor

Dan Gibbs, DNR Executive Director

Rebecca Mitchell, CWCB Director

TO: Colorado Water Conservation Board Members

FROM: Matthew Stearns, P.E., Project Development

DATE: March 15-16, 2022 Board Meeting

DIRECTORS REPORT: Water Project Loan Program
Prequalified Project List and Loan Prospect Summary

The Finance Section compiles a list of prequalified projects for the Water Project Loan Program. In order to be included on this list, potential borrowers must submit a Loan Application and three years of financial statements to the CWCB staff. In addition, Borrowers requesting to be placed on the Prequalification Project List have a defined project, have performed preliminary engineering, and have a reasonable estimate of the project costs.

Projects on this list fit the initial criteria of the Water Project Loan Program; however, the list does not constitute loan approval. In order to receive a loan, borrowers must additionally submit a completed Loan Feasibility Study for review by CWCB staff. Staff will then prepare a recommendation to the Board for approval at a future CWCB meeting. Projects will remain on this list for one year from the date of the application or until Board approval of a loan.



Prequalified Project List

BORROWER	PROJECT NAME	APPLICATION DATE	BASIN	PROJECT DESCRIPTION	PROJECT COST/LOAN AMOUNT
Previously Approved Applications					
	No prequalified projects at this time				
Total					\$ -



The Finance Section also compiles a list of potential borrowers/projects for the Water Project Loan Program. This list represents borrowers that have contacted the CWCB about a potential need for funding but have not submitted a loan application and loan feasibility study. Projects are also identified if they have a Health/Safety (*), Economic Impact (†), or Federal Match (‡) component.

BORROWER	PROJECT NAME	POTENTIAL LOAN AMOUNT
South Platte		
NISP Participants	NISP	\$750,000,000
Woods Lake Mutual Ditch Company	Culvert Replacement	\$150,000
Town of Kersey	Water Line Project	TBD
Riverside Reservoir and Land Company	Ditch Rehabilitation	\$250,000
Town of Bennett	Raw Water Tank	\$500,000
Evergreen Metro District	Evergreen Dam Enlargement	TBD
Left Hand Water District	Dry Creek Reservoir	TBD
Shawnee Water Consumers Association	Reservoir Rehabilitation	\$200,000
Boulder and White Rock Ditch & Res. Co.	Reservoir Dredging	TBD
Western Mutual Ditch Company	Reservoir Dredging	TBD
Bergen Ditch and Reservoir Company (*)	Reservoir Rehabilitation	TBD
Louviers Water and Sanitation District	Regional Connection	TBD
City of Fort Collins	Irrigation Ditch Piping	\$20,000,000
City of Fort Collins	Halligan Reservoir Enlargement	\$120,000,000
Northern Colorado WCD	Windy Gap Firing (increase)	\$40,000,000
SPROWG Participants	SPROWG	\$1,800,000,000
City of Milliken (*)	Hillsboro Dam Rehabilitation	\$15,000,000
Colorado Parks and Wildlife (*)	Tarryall Dam Rehabilitation	\$5,000,000
Dave Miller Mutual Ditch Company	Ditch Piping Project	\$150,000
Standley Lake Operating Committee	Reservoir Expansion	TBD
Switzerland Park HOA	Reservoir Rehabilitation	\$300,000
Danna Ortiz	Knouth Reservoir Rehabilitation	\$3,000,000
Loup Reservoir Company	Loup Reservoir Rehabilitation	TBD
Smith and Emmons Ditch Company	Headgate Rehabilitation	\$176,000
Middle South Platte Reservoir Company	New Reservoir	TBD
Arthur Irrigation Company	Ditch Rehabilitation	TBD
Handy Ditch Company	Welch Reservoir Rehabilitation	\$1,000,000
Castle Pines Metropolitan District	Chatfield Water Purchase	\$500,000
Glacier Lake Property Owners	Glacier Lake Outlet Rehabilitation	TBD
Central, City of	Raw Water Pipeline	TBD
Denver, City of	Floodplain Improvement	TBD
Consolidated Mutual Water Company (*)	Reservoir Rehabilitation	TBD
Subtotal		\$2,756,226,000



BORROWER	PROJECT NAME	POTENTIAL LOAN AMOUNT
Arkansas		
Town of Manitou Springs	Raw Water Pipeline	\$3,000,000
City of Woodland Park	Storage Project	\$1,000,000
Fort Lyon Canal Company	Adobe Creek Enlargement	\$8,000,000
Deweese Ditch and Reservoir Co. (+)	Reservoir Enlargement	TBD
Holbrook Ditch Company	Reservoir Enlargement	TBD
Lake County	New Reservoir	TBD
Catlin Canal Company	Canal System Improvement	\$1,500,000
Lower Arkansas WCD	New Storage Account	TBD
Donala Water and Sanitation District	Ditch Construction	TBD
Mesa McKenna Mutual Ditch Company	Ditch Piping Project	TBD
Town of Avondale (*)	New Well	TBD
Round Mountain Water & Sanitation	New Reservoir	TBD
Ordway, Town of	Reservoir Rehabilitation	TBD
Cross Creek Metropolitan District	Hale Reservoir Rehabilitation	\$3,000,000
Twin Lakes Reservoir and Canal Company	Dam and Tunnel Rehabilitation	\$5,500,000
Colorado City (*)	Beckwith Dam Rehabilitation	TBD
Oxford Ditch Company	Flume Rehabilitation	\$1,800,000
Fort Lyons Canal Company (+)	Diversion Structure Repair	\$500,000
Aguilar, Town of (‡)	New Augmentation Reservoir	TBD
Huerfano County	Water Rights Purchase	\$1,200,000
Subtotal		\$25,500,000
San Miguel/Juan		
Town of Bayfield	Ditch Piping Project	\$500,000
Redmesa Reservoir and Ditch Co. (*)	Redmesa Reservoir Enlargement	\$11,500,000
City of Cortez	Distribution System (Loss Prevention)	\$10,000,000
Webber Ditch Company (‡)	Ditch Piping Project	TBD
Pagosa Area Water and Sanitation Dist. (*)	Raw Water Pipeline Rehabilitation	TBD
Town of Naturita	Water Meters	TBD
Farmers Water Development Company	Reservoir Rehabilitation	TBD
Lone Cone Ditch and Reservoir Company	Reservoir Rehabilitation	TBD
Sellers McClane Reservoir and Ditch Co.	Reservoir Rehabilitation	TBD
Subtotal		\$22,000,000
Colorado		
Orchard Mesa Irrigation District	Lateral Piping	\$300,000
Silt Water Conservancy District	Harvey Gap Reservoir	\$300,000
Middle Ditch	Ditch Piping Project	TBD
New Multa Trina Ditch Company (‡)	Ditch Piping Project	TBD
Horse Pasture HOA	Ditch Piping Project	\$100,000
Gunther Covers	Christenson Dam	TBD
Town of Minturn	New Well Field	\$5,220,000
Flannery Water Company, LLC	Reservoir Rehabilitation	TBD
Morrisania Water Supply Company	Headgate Repair and Ditch Piping	\$150,000
Fruita, City of	Reservoir Rehabilitation	TBD
Grand Junction City of (*)	Kannah Creek Flowline Repair	TBD
Subtotal		\$6,070,000



BORROWER	PROJECT NAME	POTENTIAL LOAN AMOUNT
Gunnison		
Gunnison County Electric	Taylor Park Hydro	\$1,000,000
Duke Ditch Company	Ditch Piping Project	\$400,000
Bostwick Park Water Conservancy District	Dam Construction	TBD
Kendall Reservoir Company	Reservoir Rehabilitation	\$140,000
Orchard City Irrigation District (‡)	Fruit Growers Reservoir Rehab	\$560,000
Ouray, City of	Water Supply Pipeline	\$750,000
Grand Mesa Water Users Association	Reservoir Rehabilitation	\$600,000
Crested Butte, Town of	Dam Outlet Rehabilitation	TBD
Olathe, Town of	Water Meter Replacement	TBD
Subtotal		\$3,450,000
North Platte		
Colorado Parks and Wildlife (*)	North Michigan Creek Reservoir	\$6,000,000
Spicer Ranches, LTD	Reservoir Rehabilitation	TBD
Walden, Town	New Well	TBD
Subtotal		\$6,000,000
Rio Grande		
Manassa Land & Irrigation Co.	Ditch Rehabilitation	\$6,000,000
Baca Grande WSD	Water Rights Purchase	\$1,000,000
Sanchez Ditch and Reservoir Co.	Dam Rehabilitation	\$4,000,000
Rio Grande WCD - Subdistrict #1	Water Rights Purchase	\$5,000,000
Center, Town of	Water Meter Project	\$200,000
San Luis Valley WCD (†)	Shaw Reservoir Purchase	TBD
Colorado Parks and Wildlife	Alberta Park Dam Rehabilitation	\$4,000,000
La Jara, Town of	System Rehabilitation	TBD
Subtotal		\$20,200,000
Yampa		
Town of Oak Creek (*)	Reservoir Rehabilitation	\$5,600,000
Rio Blanco WCD	Wolf Creek Reservoir	\$100,000,000
Bear River Reservoir Company	Stillwater #1 Dam Rehabilitation	TBD
Marc Etchart	Procter Reservoir Rehabilitation	TBD
Subtotal		\$105,600,000





COLORADO

Colorado Water Conservation Board

Department of Natural Resources

1313 Sherman Street
Denver, CO 80203

P (303) 866-3441
F (303) 866-4474

Jared Polis, Governor

Dan Gibbs, DNR Executive Director

Rebecca Mitchell, Director

To: Colorado Water Conservation Board Members

From: Kirk Russell, P.E., Finance Section Chief
Jessica Halvorsen, Program Assistant

Board Meeting: March 15-16, 2022 Board Meeting

Directors Report: Water Project Loan Program, Design & Construction Status Report

The CWCB Loan Program has Substantially Completed (15) projects in Fiscal Year 2021/2022 as shown in the Table. There are currently (45) projects authorized to receive loan funding totaling \$329M. There are (38) projects currently under contract and in the Design/Construction phase totaling \$219M. The attached spreadsheet summarizes the status of all loan. A detailed description about each project is provided on the CWCB website under Water Project Loan Program. cwcw.colorado.gov/loans-grants/water-project-loan-program

	Borrower	Project	County	Loan Amount	Complete
1	North Sterling Irrigation District	Outlet Canal Automation Phase II Project	Logan	\$395,920	7/1/21
2	Redlands Water and Power Co.	Roller Gate Replacement	Mesa	\$404,000	8/1/21
3	Pueblo Conservancy District	Arkansas River & Wildhorse Creek Levees Project	Pueblo	\$23,230,000	9/1/21
4	Julesburg Irrigation District	Diversion Structure Rehabilitation	Sedgwick	\$1,298,207	9/1/21
5	San Luis Valley Irrigation District	Rio Grande Res Rehab - Phase 2	Hinsdale /Rio Grande	\$15,000,000	10/1/21(a)
6	Central Colorado WCD	Chatfield Reallocation Project Phase II Mitigation	Douglas Arapahoe / Douglas /Park /	\$6,670,684	10/1/21 (b)
7	Castle Pines North MD	Chatfield Reallocation Project Phase II Mitigation	Arapahoe / Douglas /Park /	\$1,430,032	10/1/21(c)
8	Centennial WSD	Chatfield Reallocation Project Phase II Mitigation	Arapahoe / Douglas /Park /	\$10,400,368	11/1/21 (d)
9	Centennial WSD	Chatfield Reallocation Project - First Cost of Storage	Arapahoe / Douglas /Park /	\$4,978,290	11/1/21
10	Rural Ditch Company	Diversion Structure Improvement	Weld	\$662,483	12/1/21
*11	Central Colorado WSD	Walker Recharge	Weld	\$2,272,500	1/1/22
*12	GMS of CCWCD	Walker Recharge	Weld	\$9,847,500	1/1/22
*13	WAS of CCWCD	Walker Recharge	Weld	\$3,030,000	1/1/22
*14	Huerfano County WCD	Regional Augmentation Project	Huerfano	\$2,666,400	2/1/22 (e)
*15	Upper Platte & Beaver Canal Co.	Diversion Structure	Morgan	\$4,078,215	2/1/22
	* included in Director's Report		Total	\$86,464,599	

Fiscal Year 2021 - 2022 has added and preserved 63,340 acre-feet of reservoir storage; (a) 51,113; (b) 4,274; (c) 1,006; (d) 6,922; (e) 25





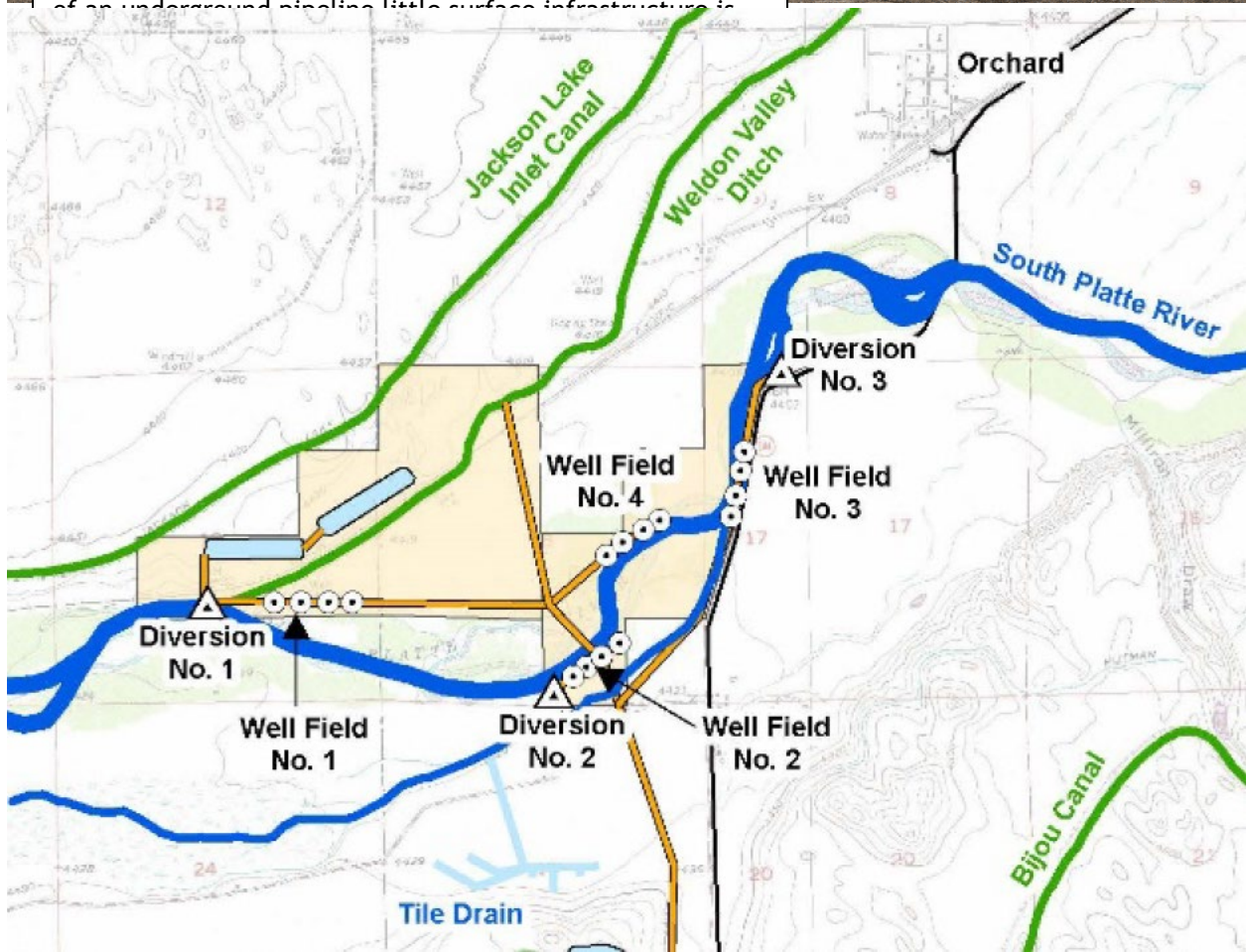
COLORADO
Colorado Water
Conservation Board
Department of Natural Resources

Walker Recharge Project

Central Colorado Water Conservancy District
Substantially Complete January 1, 2022



Finishing equipment on the project site during the winter 2020/2021 months. Because much of the project consisted of an underground piping, little surface infrastructure is





Finishing equipment on the project site during the winter 2020/2021 months. Because much of the project consisted of an underground pipeline little surface infrastructure is visible.

Project Description

The Walker Recharge Project is located in Weld and Morgan Counties between the towns of Orchard and Wiggins. Central Colorado Water Conservancy District (CCWCD) and its two subdistricts, Ground Water Management Subdistrict (GMS) and the Well Augmentation Subdistrict (WAS) jointly filed an application for water rights and for approval of plan of augmentation for the Walker Recharge site (Division 1 Water Court Case No. 16CW3202) on December 30, 2016. The court application includes surface water rights for three diversions, groundwater rights for four well fields and one existing well, numerous recharge structures, and a plan for augmentation. The plan for augmentation allows diversion from the included water rights as well as other water rights owned or otherwise controlled by CCWCD, GMS, or WAS to be delivered to the recharge ponds to generate accretions to the South Platte River.

Construction took place in two phases. The completed project allows recharge credits to be used by GMS and WAS to increase the well pumping quota issued under the respective augmentation plans. CCWCD uses recharge credits to increase the amount of water leased to GMS, WAS and other water users within the CCWCD boundaries.

P R O J E C T D A T A		
<i>Sponsor:</i> Groundwater Management Subdistrict	<i>County:</i> Weld & Morgan	<i>Water Source:</i> South Platte River
<i>Type of Project:</i> Augmentation Facility		<i>Board Approval Date:</i> September 2018
<i>Loan Terms: (Original)</i> \$9,847,500 <i>(Final)</i> \$9,847,500		
<i>Design Engineer:</i> White Sands Water Engineers, Inc.		
<i>Contractor:</i> Warbonnet Construction, Inc.		



Finishing equipment on the project site during the winter 2020/2021 months. Because much of the project consisted of an underground pipeline little surface infrastructure is visible.

Project Description

The Walker Recharge Project is located in Weld and Morgan Counties between the towns of Orchard and Wiggins. Central Colorado Water Conservancy District (CCWCD) and its two subdistricts, Ground Water Management Subdistrict (GMS) and the Well Augmentation Subdistrict (WAS) jointly filed an application for water rights and for approval of plan of augmentation for the Walker Recharge site (Division 1 Water Court Case No. 16CW3202) on December 30, 2016. The court application includes surface water rights for three diversions, groundwater rights for four well fields and one existing well, numerous recharge structures, and a plan for augmentation. The plan for augmentation allows diversion from the included water rights as well as other water rights owned or otherwise controlled by CCWCD, GMS, or WAS to be delivered to the recharge ponds to generate accretions to the South Platte River.

Construction took place in two phases. The completed project allows recharge credits to be used by GMS and WAS to increase the well pumping quota issued under the respective augmentation plans. CCWCD uses recharge credits to increase the amount of water leased to GMS, WAS and other water users within the CCWCD boundaries.

P R O J E C T D A T A		
<i>Sponsor:</i> Well Augmentation Subdistrict	<i>County:</i> Weld & Morgan	<i>Water Source:</i> South Platte River
<i>Type of Project:</i> Augmentation Facility		<i>Board Approval Date:</i> September 2018
<i>Loan Terms: (Original)</i> \$3,030,000 @ 1.75% <i>(Final)</i> \$3,030,000 @ 1.75%		
<i>Design Engineer:</i> White Sands Water Engineers, Inc.		
<i>Contractor:</i> Warbonnet Construction, Inc.		

Sheep Mountain Augmentation Facility - Reservoir



Sheep Mountain Augmentation Facility -
Downstream from reservoir and pump facility



Project Description

The Huerfano County Water Conservancy District (District) was approved for a CWCB loan in September 2013 to develop a regional augmentation program to replace depletions of wells in unincorporated communities in Huerfano County through a regional augmentation program. Within Huerfano County there are many water users that are at risk of being curtailed due either to being out of priority or due to failing (or failed) augmentation plans. The users include schools and domestic, commercial, and agricultural users. The District has utilized a Substitute Water Supply Plan and Regional Rule 14 Replacement Plan to provide augmentation water to entities that were in danger of having water use curtailed due to out of priority usage. The District believes that other water users will find it necessary to join the regional augmentation plan and the Division Engineer has indicated an urgent need for such a plan. Key project components included: the purchase of land and water rights, the construction of a recharge reservoir, and a reservoir for augmentation named the Sheep Mountain Augmentation Facility.

P R O J E C T D A T A

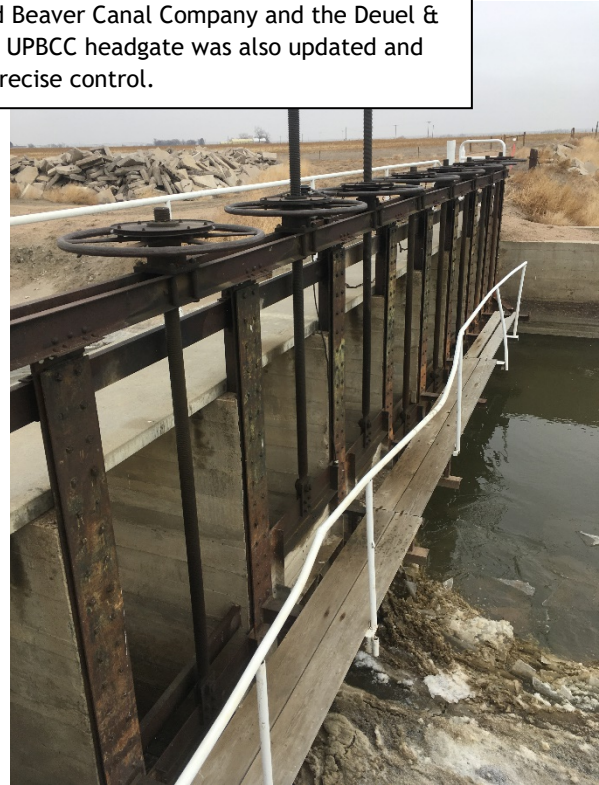
<i>Sponsor:</i> Huerfano County Water Conservancy District	<i>County:</i> Huerfano	<i>Water Source:</i> Arkansas River
<i>Type of Project:</i> Augmentation	<i>Board Approval Date:</i> September 2013	
<i>Terms of Loan:</i> 2.25% for 30 years	<i>(Original)</i> \$2,666,400.00	<i>(Final)</i> \$2,666,400.00
<i>Design Engineer:</i> TZA - Lamp Rynearson, Inc.		
<i>Contractor:</i> Paul Morgan Excavating, Inc. and Frontier Environmental Services		



Diversion Structure Replacement

Upper Platte and Beaver Canal Company
Substantially Complete February 1, 2022

The new diversion structure spans the entire width of the river allowing for diversions into the canals of both the Upper Platte and Beaver Canal Company and the Deuel & Snyder Improvements Company (left). The UPBCC headgate was also updated and allows for more precise control.



Project Description

The Upper Platte and Beaver Canal Company was incorporated in 1888 and shares a diversion off the South Platte River with the Deuel and Snyder Improvement Company. Together the two ditch companies provide irrigation water to 11,500 acres.

The existing diversion structure is a reinforced concrete slab and buttress with a height of 9 feet and a length of 1,416 feet. The diversion structure was originally built in 1936 and had improvements done in 1965. This existing structure has several deficiencies including seepage and erosion under the structure and concrete deterioration throughout the structure. This project costed of the removal and replacement of the existing structure. The new structure incorporates inflatable crest gates spillways (Obermeyer gates) and restores the channel continuity, improves sediment transport, and provides additional flow conveyance during floods.

P R O J E C T D A T A		
<i>Sponsor:</i> Upper Platte and Beaver Canal Company	<i>County:</i> Morgan	<i>Water Source:</i> South Platte River
<i>Type of Project:</i> Diversion Replacement		<i>Board Approval Date:</i> May 2019
<i>Loan Terms: (Original)</i> \$4,435,920 @ 2.25% <i>(Final)</i> \$4,078,215.22 @ 2.25%		
<i>Design Engineer:</i> Harris Engineering Consultants, Inc.		
<i>Contractor:</i> Ransom Boone Excavating		

	Borrower/Projects	County	Loan Amount	Design Status	Const. Start/End	Const Status	PM	Status Description/Update
Projects in Design or Construction								
1	Amity Mutual Irrigation Company >Queen Reservoir Dam Rehabilitation CT2021-2224	Kiowa	\$1,333,000	50%	Fall 2020 - Spring 2023	5%	RP	Dam breached. Final design underway then Dam Safety review/approval. Bid pkg. Aug2021.
2	Arapahoe County Water and Wastewater Authority >Chambers Reservoir Liner Rehabilitation CT2021-513	Arapahoe	\$4,000,000	100%	May 2020 - May 2022	80%	RP	Under construction Aug 2020. Dam Safety fill approval-May2021. Loan increase request May2021 for pump system component. Crane cert. 12/2021, pump delivery-delay until 1/2022, pouring pump pads 12/2021
3	Billings Ditch Company >Billings Ditch Implementation Project CT2022-2886	Rio Grande/Alam osa	\$171,000	100%	Fall 2021 - Fall 2022	10%	CB	This project is being managed by the Rio Grande Headwaters Restoration Foundation to replace the Billings Ditch diversion structure. A water plan grant for the same project was contracted in October. Bidding for contractor selection is taking place in November.
4	Cedar Mesa Ditch Company >Lower Cedar Mesa Ditch Piping CT2020-2680	Delta	\$1,346,000	100%	Sept 2020 - Spring 2023	99%	MS	Construction began in October 2020 to pipe the lower half of the ditch. Construction completed in January of 2022. Planning a SC date in spring 2022
5	Deuel and Snyder Improvement Company >Diversion Structure Replacement CT2020-3562	Morgan	\$643,000	100%	Aug 2020 - May 2022	85%	CB	This project will support the replacement of UPBCC/DSIC's 1,400 foot long diversion structure on the South Platte. Contractor mobilization and first purchase of materials took place in June 2020. A Scope increase will extend the project into Spring 2022.
6	Duke Ditch Company >Piping the Duke Ditch CT2017-0915 CTGG1 2017-0212 (WSRF)	Delta	\$90,000	100%	On Hold	0%	MS	NRCS finalized the design in August 2018. Federal grant expired. Company is evaluating options of applying for a loan increase and completing project without federal grant dollars.
7	Florida Consolidated Ditch Company >Hess Lateral Improvement CT2019-2034 CTGG1 2016-1319 (WSRF)	La Plata	\$1,075,000	100%	On Hold	0%	KR	Company received bids. The low bid exceeded the available funding. Company is in the process of value engineering and project adjustments.
8	Florida Consolidated Ditch Company >Florida Canal Diversion Replacement CT2021-2890 WSRF & WPG CTGG1 2021-2418	La Plata	\$750,000	10%	Spring 2021 - Fall 2023	0%	MS	This project is the replacement of a low head dam diversion structure with multibeneficial outcomes. Design work began in the summer of 2021 and is ongoing.
9	Fort Morgan Farms, LLC >Delta Water Storage Phase 1 CT2021-2222	Weld	\$8,982,000	100%	Fall 2021 - Spring 2022	60%	CB	The Delta Storage Project will construct a below grade storage reservoir. The loan covers the cost of constructing a slurry wall around the reservoir to isolate future stored water from existing groundwater. Currently the slurry wall is under construction.
10	Fruitland Irrigation Company >Tunnel and Canal Renovation CT2019-2848 WSRF CTGG1 2019-2449 WPG CTGG1 2019-2475	Delta & Montrose	\$1,729,000	100%	Jan 2020 - Dec 2023	35%	RP	Sept 2018 letter from Bureau of Reclamation recvd. Section 1 tunnel work bid pkg Dec2020. Section 2 Tribble - Pipe placement, compaction testing. Section 3&4 Rundle - begin breaking and removal of bedrock. Tribble and Wright placing concrete lining.
11	Genesee Water and Sanitation District >Reservoir No. 1 Enlargement CT2021-2851 WPG CTGG1 2021-3347	Jefferson	\$4,200,000	90%	Fall 2021 - Winter 2023	5%	RP	Loan approved Sep 2020. Water Plan Grant approved in March2021. Contracting loan and grant at the same time.
12	Glenwood Springs, City of >System Redundancy and Pre-Treatment Improvemnts >CT2021-3104	Garfield	\$8,000,000	100%	Spring 2021 - Fall 2021	20%	CB	This Wildfire Emergency Loan will improve the infrastructure for Glenwood Springs' water collection system to cope with increased sediment in their source waters as a result of the Grizzly Creek Fire in 2020.
13	Grand Mesa Water Conservancy District >Peak Res. & Blanche Park Res. Rehabilitation C150354 (CT2015-061)	Delta	\$466,620	100%	Mar 2013 - Dec 2021	99%	MS	Construction on Peak Reservoir began in the 2013 season and was completed in Oct 2014. Construction on Blanche Park Reservoir began in July 2020 and completed in December 2021.
14	Grand Junction, City of >Carson Reservoir Dam Rehabilitation CT2021-3110	Mesa	\$3,000,000	100%	Spring 2021 - Fall 2021	30%	CB	This project will update Grand Junction's Carson Reservoir in compliance with Dam Safety's recommendations including installing state-of-the-art flood advance warning equipment. The Contractor has shut down for the winter and will re-mobilize in spring 2022.
15	Grand Junction, City of >Purdy Mesa Flowline Replacement CT2021-2857	Mesa	\$7,000,000	100%	Winter 2021 - Summer 2023	0%	CB	The Purdy Mesa Flowline is a large diameter pipeline that supplies raw water to the Grand Junction WTP. Most of the line was replaced as part of previous projects and this project will replace the last remaining out-of-date pipe material. Project is on hold until 2022.
16	Groundwater Management Subdistrict of CCWCD >Hokestra Reservoir Purchase CT2020-3348	Weld	\$5,390,500	100%	May 2020 - Dec 2022	60%	CB	This Project will purchase an existing reservoir for use as augmentation storage. Funds have been disbursed for the reservoir purchase, but construction is in the earliest phases.
17	Groundwater Management Subdistrict of CCWCD >Pioneer Reservoir CT2019-3687	Weld	\$8,611,000	75%	Sep 2019 - May 2022	60%	CB	This is a gravel pit retrofit for augmentation water supply. Funds for the initial reservoir purchase and some engineering were disbursed in May 2019. Construction efforts are expected to begin in 2021.
18	Hidden Valley Water District >Master Water Meter Connection CT2020-2244	Jefferson	\$1,720,000	100%	Feb 2020 - Dec 2021	95%	RP	Assets and operations are all to the District. District signed and approved EMD IGA. Precon Dec2019. Construction begin Feb 2020. EMD connect 7/2020. Construction complete, final walkthru Aug2020. Working on IGA with EMD. Continued water court proceedings by EMD as of 12/2021.
19	Left Hand Ditch Company >Allen's Lake Filler Canal Improvements CT2019-3463	Boulder	\$1,065,000	100%	Dec 2020 - Nov 2021	99%	CB	This project replaced 2,750 feet of open ditch with a buried pipe. The Borrower is returning for a loan increase to cover the costs of some scope changes and increased material costs. The Project is complete and the increase will pay for work completed.
20	Logan Irrigation District >Prewitt Reservoir Rehabilitation CT2021-3898	Logan	\$1,563,000	100%	Spring 2021 - Fall 2021	90%	CB	This project will support dredging efforts to eliminate a dead pool at Prewitt Reservoir. The project is currently under way and the contractors are on site.
21	Lookout Mountain Water District >Upper and Lower Beaver Brook Dam Rehabilitation CT2021-3115	Jefferson	\$3,500,000	100%	Spring 2021 - May 2022	85%	RP	Contractor mobilized and site staging. Construction and dam demolition. RCC dam 100% complete as of 12/21. Spillway and outlet work construction continues.
22	North Sterling Irrigation District >North Sterling River Diversion Replacement CT2021-3875	Morgan	\$3,498,000	100%	Fall 2021 - Spring 2022	90%	CB	Demolition of the existing structure began in July 2021. Long-lead-time items have been ordered. Work is progressing on schedule and on budget. Completion is expected before the 2022 irrigation season begins.

	Borrower/Projects	County	Loan Amount	Design Status	Const. Start/End	Const Status	PM	Status Description/Update
23	Ogilvy Irrigating and Land Company >Seely Reservoir Dredging CT2019-2099 CTGG1 2019-2018 (WPG)	Weld	\$2,252,000	85%	Fall 2021 - Spring 2023	0%	RP	USACE 12/2019 non jurisdictional determination. Floating dredge proposed in lieu of draining/excavating reservoir convent. excavation/haul. OILC concerned floating dredge ability dewater sufficiently for adjacent property. Reviewing options.
24	Orphan Wells of Wiggins >Kiowa Creek Dam Rehabilitation CT2021-3116	Morgan	\$373,000	100%	Spring 2021 - Fall 2021	80%	CB	This project will repair five non-jurisdictional dams operated by Orphan Wells of Wiggins for augmentation purposes. Mobilization took place in January 2021. Dam work complete Spring 2021. Loan increase request (May 2021) for well power supply conversion
25	Redmesa Reservoir and Ditch Company >Redmesa Reservoir Rehabilitation Engineering CT2022-0498	La Plata	\$183,000	60%	TBD	0%	MS	This project is to engineer a financially feasible dam rehabilitation, including a potential enlargement. Work began on March 8, 2021 and is now exploring funding options with significant cost increases.
26	Rio Grande Water Conservation District Subdistrict No. 5 >Saguache Pipeline CT2021-3846	Saguache	\$4,844,000	80%	Spring 2021 - Fall 2022	0%	RP	Working on well owner agreement and Project easement agreements.
27	Southeastern CO Water Conservancy District >Pueblo Dam Hydroelectric Project CT2018-0833	Pueblo	\$17,220,000	100%	June 2017 - Nov 2021	98%	RP	Construction beginning fall 2017. District anticipates power production by fall of 2018. Tie-in to SDS complete April 2018. Waiting on transformer approval from Black Hills. Turbine and generator placement and fiber optic line approval. Functional and producing power. Finalizing adjustments and design details. 2-yr performance time extension approved.
28	South Platte Ditch Company >Diversion Structure Rehabilitation CT2022-0424	Washington	\$1,065,000	100%	Aug 2021 - Apr 2022	100%	CB	The project will replace the South Platte Ditch Company's Diversion Structure. Long-lead-time items have been purchased and delivered to site. Construction is ongoing.
29	Spring Dale Ditch Company >Diversion Structure Replacement Project CT2020-3110	Logan	\$1,210,000	100%	Feb 2020 - Apr 2022	98%	CB	This project will replace Springdale's aging diversion structure on the South Platte. All work except the final punch list items are complete.
30	Tunnel Water Company >West Half Laramie-Poudre Tunnel Rehabilitation CT2019-3706	Larimer	\$17,080,000	100%	Sep 2019 - Apr 2023	80%	RP	Construction scheduled to begin the Fall 2019, when low water and non-irrigation season. Requesting loan increase 11/2019, 3/2020 from Projects Bill 2020. Construction delays due to Cameron Peak wildfire. Unplanned construction season 3. Runaround complete, station 52+00 of 65+00.
31	Tunnel Water Company >Headgate Improvements Project (Wildfire Impact) CT2021-3928	Larimer	\$1,206,000	100%	Apr 2021 - Sep 2021	99%	RP	Power supply installation complete. Duperon gate delivery at site. Headgate installation underway. Construction complete. Project final.
32	Tunnel Water Company >Rawah Ditch Tunnel Rehabilitation CT2021-3927	Larimer	\$2,150,000	100%	Apr 2021 - May 2022	90%	RP	Downstream end of 54in pipe backfill grouting completed. Grout return out of the rock approximately 15ft above the pipe from the rock face. Visible grey strips running vertically in center of the picture. Restruction doing injection grouting in the riprap at ends of pipe.
33	Victor, City of >Victor Reservoir No. 2 Dam Rehabilitation CT2021-3873	Teller	\$510,000	100%	Apr 2021 - Dec 2022	0%	RP	Bid package complete and advertised. Prebid scheduled 19May2021. Planned begin construction Jun2021 changed to March 2022. Loan increase request January 2022.
34	VINELANDS POWER PLANT PROJECT							
	a. Grand Valley Water Users Association >Vinlands Power Plant CT2022-2084 WPG CTGG1 2022-2072	Mesa	\$1,066,000	100%	Fall 2021 - Fall 2022	5%	MS	This project will replace the existing hydroelectric powerplant. PPA is signed, LOPP is signed. Contractor mobilized November of 2021 and construction is progressing as expected. Contractor is experiencing shipping delays for custom power plant equipment, but is able to work around the issue for the time being.
	b. Orchard Mesa Irrigation District >Vinlands Power Plant CT2022-2057	Mesa	\$1,066,000	100%	Fall 2021 - Fall 2022	5%	MS	
35	Wiggins, Town of >Wiggins Recharge Facility at Glassey Farms CT2018-0892	Morgan	\$2,385,000	100%	Jul 2017 - Jul 2022	0%	CB	The purpose of this project is to develop an augmentation water source for the Town. In August 2017 the Town purchased Glassey Farms and its associated water rights and 52% of funds were disbursed at that time. The project is back underway and an extension was granted.
36	Windy Gap Firming Project Water Activity Enterprise >Windy Gap Project CT2021-2039	Larimer	\$89,108,911	100%	Spring 2021 - Summer 2024	10%	CB	Construction contract was awarded in December and allotment contracts among project participants are being drafted. Contractor was selected in October. Project loan conditions were amended at the March Board Meeting. Due to ongoing litigation the project start is delayed until 2022.
37	WISE Project - Phase 2 Infrastructure \$7,326,940							
	a. Cottonwood W&S Dist - C150408C (CT2015-0105)	Douglas/ Arapahoe	\$1,116,000	100%	Jan 2020 - Dec 2022	90%	RP	Binney Connection Pipeline of Water Infrastructure and Supply Efficiency project will increase WISE flow capacity to 30MGD and provide infrastructure from Aurora Binney Facility to SMWSA. Pumps/Treatment-Glacier, Pipeline/Infrastructure-T.Lowell, Jacobs is Engineer. Vault excavation began 9/2020. Construction trailer onsite through project duration. Glacier complete foundation work, pump cans have been delivered and installed, pump motors have arrived at the pump manufacture, preliminary SCADA meetings begun, Glacier starting to form rebar for the flow control building, start laying pipe. Precast concrete walls for pump station planned Jun2021.
	b. Inverness W&S Dist - C150409C (CT2015-0119)	Douglas/ Arapahoe	\$1,413,000	100%	Jan 2020 - Dec 2022	90%	RP	
	c. Parker W&S Dist - C150410C (CT2015-0109)	Douglas/ Arapahoe	\$3,384,810	100%	Jan 2020 - Dec 2022	90%	RP	
	d. Pinery (Den SE WSD)C150411B (CT2015-0086)	Douglas/ Arapahoe	\$1,413,130	100%	Jan 2020 - Dec 2022	90%	RP	
38	WISE Project - DIA Connection \$1,902,600							
	a. Cottonwood W&S Dist - C150408D (CT2015-0104)	Douglas/ Arapahoe	\$363,600	80%	N/A	60%	RP	Annual disbursement to be made on this loan through 2021.Design Status indicates percent of funds disbursed to date. WISE WDA negotiations between parties continue with the goal of having an amended Water Delivery Agreement ready to be brought to the respective Boards and Council for review and approval by April 1, 2021. Group discussion continues focused on the DIA Connection.
	b. Inverness W&S Dist - C150409D (CT2015-0120)	Douglas/ Arapahoe	\$450,000	80%	N/A	60%	RP	

Borrower/Projects	County	Loan Amount	Design Status	Const. Start/End	Const Status	PM	Status Description/Update
c. Parker W&S Dist - C150410D (CT2015-0110)	Douglas/ Arapahoe	\$1,089,000	80%	N/A	60%	RP	

Projects Under Contract : \$219,081,571

Approved Projects - Not Under Contract								
a	Taylor & Gill Ditch Company >Ditch Piping CT2022-XXXX CTGG1 2022-XXXX	Larimer	\$125,000	0%	Fall 2020 - Spring 2021	0%	CB	This project will replace 1,000 feet of open ditch with a buried pipe. Contracting documents are dated and need redone.
b	Southeastern Colorado Water Conservancy District >Arkansas Valley Conduit CT2022-XXXX	Pueblo, Crowley, Otero, Bent, Prowers	\$90,000,000	0%	Fall 2020 - Fall 2035	0%	RP	
c	Root and Ratliff Ditch Company >Ditch Piping and Rehabilitaion >CT2022-XXXX	Montezuma	\$300,000	100%	Fall 2019 - Fall 2022	90%	RP	
d	Breckenridge, Town of >Goose Pasture Tarn Dam Rehabilitation CT2022-XXXX	Summit	\$13,000,000	100%	Fall 2020 - Spring 2023	50%	CB	Projects Bill
e	Trinchera - GMS >Augmentation Pipeline >CT2022-XXXX	Rio Grande	\$977,000	50%	Jan 2022 - Dec 2022	0%	RP	
f	Dove Creek, Town of >Reservoir No. 2 >CT2022-XXXX (WPG) CTGG1 2022-XXXX	Dolores	\$800,000				RP	
g	Triview Metropolitan District >Stonewell Springs Reservoir Complex >CT2022-XXXX	Pueblo	\$4,731,000				RP	

Not Under Contract SubTotal = \$109,933,000

Grand Total = \$329,014,571

**WATER PROJECT COSTRUCTION LOAN PROGRAM
LOAN REPAYMENT DELINQUENCY REPORT
LOAN FINANCIAL ACTIVITY REPORT
March 2022**

LOAN REPAYMENT DELINQUENCY

Loan Repayments received relative to the Water Project Construction Loan Program have been reviewed for the period covering July 2021 through February 2022. The effective due date of the payment is inclusive of the Board's current 60 day late policy. Hence, the date the payment was received was compared to the last day allowable prior to the payment being considered late.

Repayments due for Fiscal Year 2022 totaled 168. All borrowers payments are current.

LOAN FINANCIAL ACTIVITY

Loan Financial Activity relative to the Water Project Construction Loan Program for Fiscal Year 2022 is summarized as follows: Funds received relative to loans in repayment totaled \$30.7M for this year. Funds disbursed relative to new project loans totaled \$28.9M for this year. Net activity resulted in \$1.7M received by the CWCB Construction Fund and the Severance Tax Perpetual Base Fund (STPBF) over the total disbursed.

Further breakdown is summarized as follows: The Construction Fund portion consists of \$9.6M in receivables and \$13.9M in disbursements for a total net activity of \$4.3M disbursed over received. The STPBF consists of \$21.1M in receivables and \$14.9M in disbursements for a total net activity of \$6.1M received over disbursed.

CONSTRUCTION FUND

Period	Principal	Interest	Total Received	Disbursements	Net Activity
July 2021	\$ 607,340	\$ 273,708	\$ 881,048	\$ 572,695	\$ 308,353
August 2021	\$ 400,916	\$ 224,277	\$ 625,193	\$ 20,973	\$ 604,220
September 2021	\$ 1,568,570	\$ 869,304	\$ 2,437,874	\$ 2,513,291	\$ (75,417)
October 2021	\$ 578,559	\$ 188,949	\$ 767,508	\$ 569,027	\$ 198,481
November 2021	\$ 600,620	\$ 567,254	\$ 1,167,874	\$ 3,505,745	\$ (2,337,871)
December 2021	\$ 353,063	\$ 4,530	\$ 357,593	\$ 4,408,669	\$ (4,051,076)
January 2022	\$ 1,085,892	\$ 1,384,645	\$ 2,470,537	\$ 592,691	\$ 1,877,846
February 2022	\$ -	\$ 903,670	\$ 903,670	\$ 1,782,383	\$ (878,713)
FY 2022 Totals	\$ 5,194,960	\$ 4,416,337	\$ 9,611,297	\$ 13,965,474	\$ (4,354,177)

SEVERANCE TAX TRUST FUND PERPETUAL BASE ACCOUNT

Period	Principal	Interest	Total Received	Disbursements	Net Activity
July 2021	\$ 757,337	\$ 51,664	\$ 809,001	\$ 955,767	\$ (146,766)
August 2021	\$ 880,919	\$ 1,083,636	\$ 1,964,555	\$ 1,407,159	\$ 557,396
September 2021	\$ 5,642,601	\$ 1,109,255	\$ 6,751,856	\$ 1,166,005	\$ 5,585,851
October 2021	\$ 7,507,195	\$ 1,640,496	\$ 9,147,691	\$ 1,962,915	\$ 7,184,776
November 2021	\$ 523,682	\$ 228,246	\$ 751,928	\$ 3,358,888	\$ (2,606,960)
December 2021	\$ 72,473	\$ 14,357	\$ 86,830	\$ 4,459,280	\$ (4,372,450)
January 2022	\$ 626,717	\$ 489,354	\$ 1,116,071	\$ 342,520	\$ 773,551
February 2022	\$ -	\$ 514,331	\$ 514,331	\$ 1,341,797	\$ (827,466)
FY 2022 Totals	\$ 16,010,924	\$ 5,131,339	\$ 21,142,263	\$ 14,994,331	\$ 6,147,932
GRAND TOTALS	\$ 21,205,884	\$ 9,547,676	\$ 30,753,560	\$ 28,959,805	\$ 1,793,755