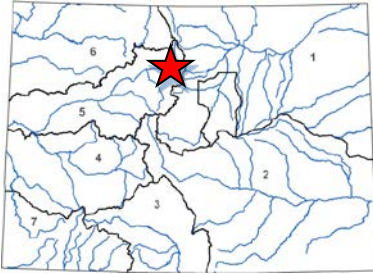


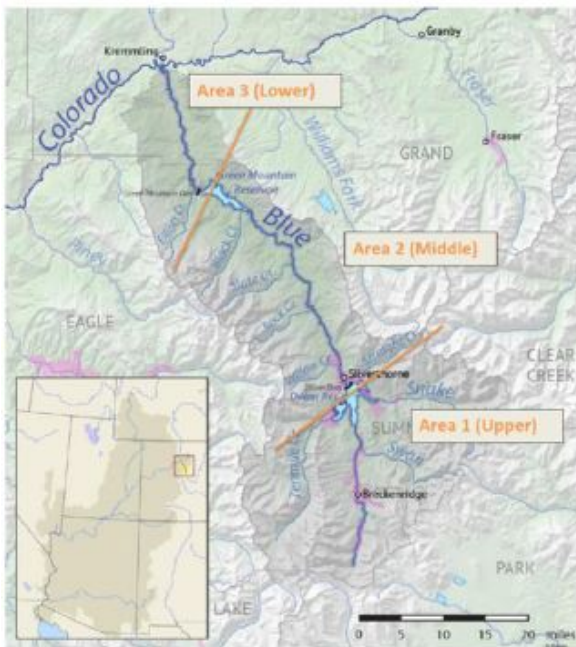
Colorado Watershed Restoration Program Application



L O C A T I O N	
County/Countries:	Summit
Drainage Basin:	Colorado

D E T A I L S	
Total Project Cost:	\$252,250
Colorado Watershed Restoration Program Request:	\$100,000
Recommended amount:	\$100,000
Other CWCB Funding:	\$0
Other Funding Amount:	\$126,250 pending
Applicant Match:	\$26,000 in-kind
Project Type(s):	Watershed Plan/Assessment
Project Category(Categories):	Watershed/Stream Restoration
Measurable Result:	Evaluation of stream flow, macroinvertebrate samples, temperature profiles, angler creel census, updated IWMP

The Blue River Watershed Group (BRWG) and Trout Unlimited (TU) are working together to produce a basin-wide integrated water management plan (IWMP) for the Blue River basin. The long-term goal of the IWMP is to enable consumptive and non-consumptive water users to understand and quantify current and future uses and integrate those uses for the maximum benefit of all users while protecting the existing water resources.



Phase 1 of the IWMP will be finalized in March 2021, where the main objectives were to work with the Blue River Enhancement Workgroup to understand the reasons for the declining Blue River trout fishery between Dillon and Green Mountain Reservoirs and to compile current research, management plans, and stakeholder input to inform Phase 2 of the project. The initial results of Phase 1 have pointed to the need for Phase 2 to focus on additional data throughout the watershed, primarily in the effort to pinpoint effective strategies to address the declining fishery between Dillon and Green Mountain Reservoirs. Phase 2 will focus on the following:

- Developing scientifically valid restoration strategies through evaluation of existing stream flows in relation to the geomorphology of the stream
- Sampling macroinvertebrates at 10 sample sites in 2021
- Evaluating temperature profiles in Dillon

Reservoir in relation to Blue River temperature data to understand both stream and reservoir seasonal temperature variations and continue assessing that data in terms of biological limitations for the aquatic community

- Conducting a statistically valid angler creel census to provide a baseline value that could be used to help judge the effectiveness of future restoration projects
- Continuing to work closely with stakeholders, including the Advisory Committee and the Blue River Enhancement Workgroup, to ensure the IWMP project stays on track with community priorities and concerns
- Integrating the findings of Phase 2 into an updated IWMP



COLORADO
Colorado Water
Conservation Board
Department of Natural Resources

Blue River IWMP - Phase 2 Blue River Watershed Group

January 2021 Board Meeting

The application ranked very high in the review process, and the applicant has assured staff of many promising match-funding requests. Staff will monitor the progress or acquiring match funding closely.

Colorado Water Conservation Board-Colorado Watershed Restoration Program

Grant Application.

Summary Sheet

Project Title: Blue River Integrated Water Management Plan – Phase 2

Project Location: Blue River Basin in Colorado

Grant Type: Stream Management Plan Grant

Grant Request/Amount: \$100,000

Cash Match Funding: \$126,250

In-kind Match Funding: \$ 26,000

Project Sponsor(s): Blue River Watershed Group (lead sponsor) and Trout Unlimited

Contact Information: Erika Donaghy info@blueriverwatershed.org (3030)-505-0861, Richard Van Gytenbeek r.vangytenbeek@tu.org (307) 690-1267, Dan Omasta DOmasta@tu.org (720) 354-2647.

Project Description

The Blue River Watershed Group (BRWG) and Trout Unlimited (TU) are working together to produce a basin-wide integrated water management plan for the Blue River basin (BRIWMP). The long-term goal of the IWMP is to enable consumptive and non-consumptive water users to understand and quantify current and future use and integrate those uses for the maximum benefit of all users while protecting the existing water resource.

Phase 1 of the BRIWMP will be finalized in March 2021. The main objectives of Phase 1 were to (1) work with the Blue River Enhancement Workgroup (BREW) to understand the reasons for the declining Blue River trout fishery between Dillon and Green Mountain Reservoirs and (2) compile current research, management plans, and stakeholder input to inform Phase 2 of this project. As we wrap up Phase 1, the initial results have pointed to the need for additional data in several areas in order to present the community with a comprehensive picture of the health of the main stem of the Blue River in particular and the entire watershed more generally. The project team believes that additional data is needed throughout the watershed but is especially important in our effort to pinpoint effective strategies to address the declining fishery between Dillon and Green Mountain Reservoirs. The following tasks will build upon the work completed in Phase 1:

- **Task 1:** Develop scientifically valid restoration strategies through evaluation of existing stream flows – both temporally and quantitatively – in relationship to the geomorphology of the stream.
- **Task 2:** Sample macroinvertebrates at 10 sample sites in 2021 (following the same protocol from 2020). Eight of these sites were sampled in 2020, and two of these sites will be new in 2021.
- **Task 3:** Evaluate temperature profiles in Dillon Reservoir in relation to Blue River temperature data to understand both stream and reservoir seasonal temperature variations and continue assessing that data in terms of biological limitations for the aquatic community.
- **Task 4:** Conduct a statistically valid angler creel census to provide a baseline value that could be used to help judge the effectiveness of future restoration projects. This census will be combined with results from past census work.
- **Task 5:** Continue to work closely with stakeholders including the Advisory Committee and BREW to ensure the BRIWMP project stays on track with community priorities and concerns. Members of these groups also provide critical expertise in a wide variety of subject areas.
- **Task 6:** Integrate the findings of Phase 2 into an updated BRIWMP.

While the project team is confident that the described tasks will comprise the focus of work in Phase 2, Phase 1 will not be completed until March 2021. As such, these tasks are subject to modification based on final Phase 1 input from the Advisory Committee, BREW, and the wider community.

Applicant Qualifications

The Blue River Integrated Water Management Plan (BRIWMP) is being developed as a joint effort between the Blue River Watershed Group (BRWG) and Trout Unlimited (TU). While BRWG is the lead project sponsor, both organizations are:

- equally invested in the success of this project
- 501(c)3 designated nonprofit organizations
- capable of meeting CWCB grant contracting requirements

Both TU and BRWG have extensive water-related experience in the basin and will be providing substantial staff time to the project for the purposes of restoring and protecting basin natural resources through this integrated approach. TU and BRWG have been working closely together since the beginning of the project (Fall 2018) and will continue to collaborate throughout Phase 2 of the project.

Our request from CWCB is \$100,000 for Phase 2 of the BRIWMP. We are seeking matching funds in the amount of \$100,000 from private foundation sources. While these funds have not yet been secured, we are in the initial stages of requesting funds from several sources with a history of funding similar projects. If funds are awarded from CWCB, this stamp of approval for our project will provide helpful leverage to secure the required matching funds.

We are also seeking \$26,250 in cash contributions from local organizations and municipalities. All of the value of the in-kind contribution will come from the staff time that is dedicated to this project by staff from TU and BRWG. The project team is made up of three staff members who will spend a significant amount of their time on this project: Erika Donaghy, BRWG; Richard Van Gyteneek, TU National Staff; Dan Omasta, TU Colorado Staff. This staff time represents \$26,000 in in-kind value. Lastly, as you can see from our attached letters of support, our project enjoys staunch support from our local municipalities and other important stakeholders.

Our growing list of project stakeholders are also committed to the restoration and protection of basin natural resources and have expressed their written support for this integrated approach. Many of these supporters have expressed interest in financially supporting this effort, as well as the future programs, projects and management changes that may result. Lastly, both project partners have extensive experience managing large grants of this nature.

Organizational Capability

History of Relevant Accomplishments:

Both TU and BRWG have been involved in many water planning and restoration projects within the Blue River watershed. BRWG is run by a part time Executive Director and managed by a volunteer board of directors who have expertise in various fields related to water, land use, and environmental stewardship representing a variety of stakeholder groups. TU is the nation's largest cold-water conservation organization, with 250,000 members dedicated to conserving, protecting, and restoring North America's trout and salmon fisheries and their watersheds. Meanwhile, Colorado TU has 11,000 grassroots members across the state. TU believes that conservation should be a true partnership between landowners, agencies, municipalities, and all stakeholders. Below, we have included a few recent accomplishments for each partner, which are relevant to the proposed project.

Trout Unlimited (TU National Staff and the local Gore Range Chapter):

- Completion of a four-year project with Summit County Open Space, Town of Breckenridge, USFS, and EPA to mitigate negative impacts on water quality stemming from the Mountain Pride mine in Illinois Gulch
- Assisted Northwest Colorado Council of Governments on water quality sampling in Peru Creek to determine reclamation actions for the Penn Mine
- Partnered with Summit Open Space to clean up the Manila Lode Claim
- Involvement in the crafting of the Colorado River Cooperative Agreement
- Project partner on the Swan River Restoration Project
- Involvement with Greenback Cutthroat stocking efforts in Dry Gulch and Herman Gulch
- Assists CPW in Swan River fishery surveys
- Led the Summit County High School Trout in the Classroom project
- Plan and host the TU Western Regional Meeting in Keystone
- Involvement with Project Healing Waters, which provides support for disabled veterans
- Designed and implemented the Blue River Explorer Hike

Blue River Watershed Group:

- Partnered with the Northwest Colorado Council of Governments and the Colorado Department of Reclamation Mining and Safety, to facilitate three remediation projects at the Silver Spoon Mine, Delaware Mine, and the Cinnamon Gulch realignment
- Is a partner in the Swan River Restoration, which is restoring 2.3 miles of the Swan River and 100 riparian acres of surrounding land
- Partnered with USFS and Copper Mt. Ski Resort to restore 2800 linear feet of Tenmile creek and 6 acres of adjacent riverbank and floodplain
- Maintains an ongoing partnership with the Colorado River District to cohost the annual State of the River session covering a host of topics such as water law, snowmaking, water and land trusts, and water conservation
- Coordinating with the Colorado River Round Table to incorporate IWMP projects into the Basin Implementation Plan
- Received an EPA grant to produce the Snake River Basin Watershed Plan, which identified mine remediation projects in the basin and prioritized the worst problems.

Project Staffing:

Project staffing will primarily be provided as an in-kind contribution from BRWG and TU. The project team and approximate time spent on the project are:

- Erika Donaghy, Executive Director, BRWG at .2 FTE
- Richard Van Gytenbeek, Co. River Basin Outreach Coordinator, TU National at .05 FTE
- Dan Omasta, Grassroots Coordinator, Colorado TU at .1 FTE

In addition to the three project team members listed above, Peggy Bailey (works with TetraTech, who has been contracted to write the BRIWMP) also volunteers time beyond her contract obligations to help complete this project. This collective commitment means that project sponsor staff members

will be dedicating approximately 14 hours per week to project management for the proposed 12-month grant period. This staff time is an estimated \$26,000 of in-kind value. While this average will vary from week to week, the project team knows from Phase 1 that a high level of investment is necessary from each member of the project team to keep the project moving according to schedule. Project team members spend time on public outreach, project stakeholder updates and coordination, attendance at public and project-focused meetings, review of data, direct field work, and writing and reviewing the actual BRIWMP.

Project Budget and Schedule:

To ensure a realistic project budget we have considered the actual cost of projects in Phase 1 and applied that knowledge to Phase 2 projects. The project schedule largely revolves around seasonal requirements for sampling and data collection. Again, based on the timeline of studies in Phase 1, we believe that the timeline for sampling, analysis, and integration of findings into the BRIWMP is realistic. While some of the studies planned for Phase 2 will begin in February of 2021; none of the work to which CWCB funds would be allocated will begin until after contracts have been executed.

Proposal Effectiveness

Existing Information Resources:

When the plan for Phase 1 of the BRIWMP was developed, it was guided by the CBRT-IWMP Framework - specifically focused on the information compiled in the Colorado Headwaters Sub-regions (Summit Region) page on basin organizations, projects and studies (Available: <http://uppercoloradoriver.org/co-river-headwaters/colorado-headwaters-sub-regions/>). This resource helped get this project started out right, especially regarding the initial stakeholder engagement process. As we worked through Phase 1 of the BRIWMP, in close collaboration with our advisory committee and the Blue River Enhancement Workgroup, we identified areas where additional data and a more in-depth analysis are required.

Project Objectives:

During Phase 1 of the BRIWMP, a comprehensive review of all available information on the watershed was completed. This included any existing studies, plans and available data. This information will all be integrated in the final Phase 1 report. The results of this review of data revealed that more analysis is needed in order to paint a comprehensive picture of the health of our watershed. This is especially true when it comes to understanding the decline of the fishery between Dillon and Green Mountain Reservoirs. This is a complex issue, and while Phase 1 has given us a good understanding of what is at play, we need to undertake a more complex analysis to make recommendations on how to improve the fishery in this area. Therefore, the focus of Phase 2 of the BRIWMP is to conduct a more sophisticated analysis of the data we reviewed in Phase 1, both for this specific reach and other areas of the watershed.

Phase 2 BRIWMP Objective: Complete additional studies and assessments that will allow us to create a report with a comprehensive understanding of the environmental factors influencing the fishery and with that a better understanding of the state of our watershed. The main tasks, which are described in detail in the scope of work, to be completed as part of this objective are as follows:

- **Task 1:** Develop scientifically valid restoration strategies through evaluation of existing stream flows – both temporally and quantitatively – in relationship to the geomorphology of the stream.

- **Task 2:** Sample macroinvertebrates at 10 sample sites in 2021 (following the same protocol from 2020). Eight of these sites were sampled in 2020, and two of these sites will be new in 2021.
- **Task 3:** Evaluate temperature profiles in Dillon Reservoir in relation to Blue River temperature data to understand both stream and reservoir seasonal temperature variations and continue assessing that data in terms of biological limitations for the aquatic community.
- **Task 4:** Conduct a statistically valid angler creel census to provide a baseline value that could be used to help judge the effectiveness of future restoration projects. This census will be combined with results from past census work.
- **Task 5:** Continue to work closely with stakeholders including the Advisory Committee and BREW to ensure the BRIWMP project stays on track with community priorities and concerns. Members of these groups also provide critical expertise in a wide variety of subject areas.
- **Task 6:** Integrate the findings of Phase 2 into an updated BRIWMP.

Monitoring and Implementation:

The implementation of Phase 2 will include the following efforts:

- Implement additional studies and assessments as specified in Tasks 1-5
- Analyze the additional data gained from these study and assessment efforts
- Compile these findings and integrate them into the BRIWMP
- Publish and updated BRIWMP to complete Phase 2 of the project

The monitoring and implementation plan for each of the five tasks is laid out in the scope of work.

Attachment A: Scope of Work

Grantee/Fiscal Agent: Blue River Watershed Group

Primary Contact: Erika Donaghy, Executive Director

Address: P.O. Box 867, Silverthorne, CO 80498

Phone: 303-505-0861

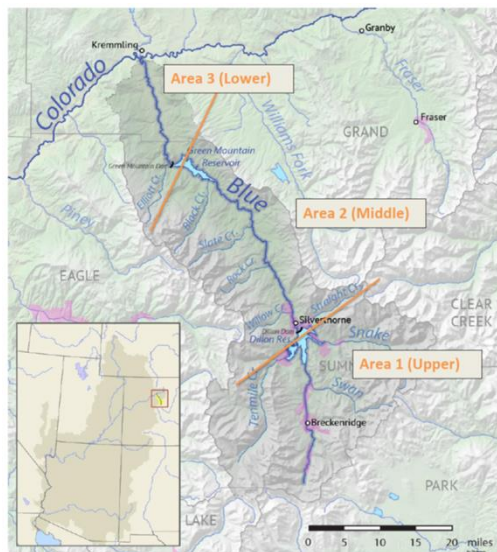
Project Name: Blue River Integrated Water Management Plan – Phase 2 (Blue River IWMP)

Grant Amount: \$100,000

Introduction and Background

The Blue River basin exhibits a variety of riverine ecosystems, ranging from high mountain creeks to meandering river environments surrounded by irrigated grass-hay pasture. The streams and rivers of the basin support a large number of non-consumptive uses (recreational and environmental) and consumptive uses (municipal, agricultural, and industrial), which include the municipal trans-basin diversions managed by Denver Water, Colorado Springs Utilities, and the City of Golden. The health and maintenance of these water resources is vital to the dependent communities, the environment of the basin and as a headwater community to downstream water users.

In 2019, Trout Unlimited (TU) and the Blue River Watershed Group (BRWG) joined together to develop a basin-wide integrated water management plan for the Blue River basin (BRIWMP). The long-term goal of the BRIWMP is to enable consumptive and non-consumptive water users to understand and quantify current and future use and integrate those uses for the maximum benefit of all users while protecting the existing water resource. Phase 2 of the BRIWMP builds on the progress we made during Phase 1, where we identified several areas where more detailed analysis of the available data is required. We will complete this analysis through the implementation of several studies and assessments that are described in the five tasks outlined below. The results of these efforts will be utilized to update the BRIWMP report including the identification of recommended solutions to issues affecting our watershed.



For ease of communication throughout the BRIWMP document, the Blue River watershed has been divided into three reaches as illustrated at the left and further described as follows:

- Reach One: Upper Blue River above Dillon Reservoir, includes major drainages such as the Swan River, Snake River, and Tenmile Creek
- Reach Two: Middle Blue River between Dillon Reservoir and Green Mountain Reservoir, includes the main stem of the Blue River and numerous smaller order tributaries
- Reach Three: Lower Blue River from Green Mountain Reservoir to the Colorado River Confluence

Task 1: Develop scientifically valid restoration strategies through evaluation of existing stream flows – both temporally and quantitatively – in relationship to the geomorphology of the stream.

Description: The purpose of this task is to develop scientifically valid solutions to improve aquatic habitat by assessing the relationship between stream flows, the geomorphology of the stream channel, and the timing of seasonal flows. Understanding this relationship will support the development of restoration opportunities on the Blue River that could improve the fisheries, and aquatic-related values associated with the riparian corridor, while protecting existing water rights and consumptive uses.

Methods: We will examine the relationship between stream flows and the geomorphology of the river channel to identify opportunities to improve the aquatic habitat within the confines of existing stream flows. For example, we have observed areas of the Blue River where the river channel is too wide and shallow to provide adequate depth and overhead cover for trout under the current stream flow conditions. We believe that narrowing the channel may improve this condition and increase viable habitat.

Stream channels exist in a dynamic interplay between flow, substrate, suspended solids and other variables. This task shall employ hydraulic modeling and assessment to understand whether a smaller channel might be better balanced to existing flows and thereby provide increase stream function and health. The hydraulic simulation shall be developed to describe the area of a stream having various combinations of depth, velocity, and channel index as a function of flow. This information will be used to calculate Weighted Usable Area for the stream segment from suitability information based on the various species of interest. Flushing flow needs at each site will also be assessed considering the results of the hydraulic model, substrate pebble counts at each site, and appropriate sediment mobilization and transport models. A hydrologic evaluation will be conducted to review trends in flows at key seasonal times for support of aquatic habitat (primarily the fishery and macroinvertebrates) using existing available records at existing USGS gages. Flow-temperature relations will also be investigated using continuous temperature data collected by BRWG in 2020, and 2021 as it becomes available, and stream flow records.

This task includes an evaluation of the projects completed for the EIS for Denver Water in 1985 (Chadwick and Associates). We will then evaluate the need to re-run or collect new data based on changes in discharge, channel slope and geomorphology that have occurred in the Blue River since the initial evaluation.

A minimum of two locations are proposed for detailed assessments to develop recommended restoration projects that will optimize conditions under current stream flows. This includes one site located in Reach 1 between Dillon Reservoir and the confluence with the Swan River and a second site in Reach 2 that will be located downstream of Dillon Reservoir. Similar recommendations for Reach 3 will be based on the results from the Grand County Stream Management Plan.

Detailed assessments will also include qualitative characterization of current riparian types (e.g. shaded-riverine, riparian forest, cottonwood canopy seasonal wetland, etc.), identifying dominant vegetation types such as cottonwood trees, willows, grasses, and other ground cover. Habitats will be identified in or adjacent to the potential project sites that may be subject to regulation under Section 404 of the Clean Water Act if flow regime is altered and/or if restoration is to occur. This effort will be based on visual observations and will be incorporated into the decision making process for areas

that may be considered for restoration as well as areas that may be or have been impacted by changes in flow regime and warrant further study.

Deliverables: At the conclusion of task one, results will be documented including a written description of findings, tables, calculations, photographs, and mapping as required to describe this analysis. This information will be utilized to update the Stream Health Assessments from Phase 1 of the BRIWMP.

Task 2: Macroinvertebrate Sampling

Description: Macroinvertebrate sampling will be conducted in 10 locations. Of these 10 locations two will be new sites located in Reach 1. The remaining eight sites are the same sites that were sampled in 2020 (seven of these existing sites are located in Reach 2 and one existing site is located in Reach 3). The new sites planned for Reach 1 include one site located between the confluence of French Gulch and Valley Brook Road and the second site located at Broken Lance Road, south of Breckenridge (please see the attached map of the proposed and existing sampling sites). The purpose of these two new sampling locations is to assess the macroinvertebrate population above and below the confluence of French Gulch which, based on the water quality assessments in Phase 1, is likely contributing contaminants to the Blue River.

Methods: The field work will consist of macroinvertebrate sampling following the same procedures implemented in 2020, and in compliance with the requirements/guidance provided by the WQCD Policy Statement 10-1 and Appendix D in the *Section 303(d) Listing Methodology 2020 Listing Cycle* (WQCD, 2017 and 2019). Sampling events will occur during the spring (April), summer (late July/early August), and Fall (late September/early October).

Data analysis will include a calculation of the Multi-Metric Index (MMI v4) that has been adopted by the WQCD (WQCD, 2017). The MMI v4 will be applied to quantitative macroinvertebrate data collected using the guidelines provided in the appendices of *Policy Statement 10-1*, and *Section 303(d) Listing Methodology 2020 Listing Cycle* (WQCD, 2017 and 2019).

In addition to the MMI v4, the data analysis will include a selection of several individual metrics specifically chosen to assess the condition of aquatic life and address specific concerns in this study. Most of these additional metrics have been reviewed in WQCD Policy 10-1 and/or recommended by the EPA Rapid Bioassessment Protocols (Plafkin et al. 1989; Barbour et al. 1999). Results from this analysis will be provided in tables in the summary report that will allow for easy comparisons among sites. The assessment will also provide dry weights for each of the major orders of aquatic insects and an evaluation of functional feeding groups. This should provide some understanding of the food requirements and ecological role of aquatic macroinvertebrates at each sampling location.

Deliverables: A summary report will be compiled, which will consist of a brief introduction, methods, results/discussion, tables, and figures (that compare results of specific metrics), and references. An appendix will be provided that contains tables with species lists and site-specific population densities. The results/discussion section will provide an evaluation of the MMI v4 scores and a comparison of other metric values used in this study.

Task 3. Evaluate Temperature Profiles in Dillon Reservoir to Assess Opportunities to Benefit Downstream Aquatic Community

Description: The hydrology and temperature regime in the Blue River may have an influence on the overall productivity and biological potential of the river. This task will investigate the interaction between hydrology and temperature and explore whether or not temperature is a limiting factor to the productivity and biological potential of the river.

Methods: We will utilize continuous water temperature information collected in 2020 alongside hydrologic data to assess the impacts that the interplay of temperature and hydrology is having on the spawning and recruitment of brown trout, and macroinvertebrate populations in the Blue River below Dillon Reservoir. Temperature profiles within Dillon Reservoir will also be evaluated to determine if developing alternate release points for water from the reservoir to the Blue River would be beneficial for fish populations.

Additionally, research will be conducted on other projects that have implemented release structures that can better control the water temperature of the water released from a dam. If the results of this task indicate that a temperature change in the river would indeed be beneficial to the aquatic life in the Blue River, the BRIWMP team will work with Denver Water to explore options for controlling the temperature of the water being released from Dillon Dam.

Deliverables: The documented results will include a written description of findings and recommendations.

Task 4. Assess Angler Use

Description: A statistically valid angler creel census will be conducted on the Blue River that will provide baseline conditions for angler use before any projects are completed. After projects are completed, evaluations utilizing before and after project biological data and creel census information could be completed. The before project and after project comparison would hopefully show an improvement in aquatic life which would provide a measure of overall success for the individual restoration projects.

Task 5. Continue to work closely with stakeholders including the Advisory Committee and BREW

Description: Throughout Phase 2 of the BRIWMP, we will continue to work closely with important stakeholder groups – including the Advisory Committee and BREW – to ensure the BRIWMP project stays on track with community priorities and concerns. Members of these groups also provide critical expertise in a wide variety of fields relevant to the work we are doing through the BRIWMP. While the work planned for Phase 2, as laid out in this application, is informed by where we currently are in Phase 1; some parts of this plan may need to change due to feedback from these groups on the final Phase 1 BRIWMP, which we will complete this winter.

Task 6. Integration of Results from Phase 2 into an Updated BRIWMP Document

Description: The BRIWMP Team will summarize the findings of Tasks 1 through 4 to integrate into an updated Phase 2 BRIWMP document. Based on these findings, the Phase 2 BRIWMP document will contain comprehensive recommendations for solutions that will improve the health of the Blue River.

Methods: Data and analyses for Phase 2 of the BRIWMP will be reviewed and integrated with efforts from the Phase 1 BRIWMP report. It is anticipated that the efforts described in this application will

identify specific areas where certain limiting factors or issues effecting stream health are identified that could be addressed with physical habitat restoration. These areas will be identified, and restoration techniques will be recommended that may lead to more detailed restoration planning and/or design in future phases of work. The results shall be documented including a written description, sketches of typical cross sections, and recommendations for implementation.

It is also anticipated, that as a result of the efforts described above, that there may be opportunities to improve aquatic habitat by addressing operational regimes. Once these reaches and considerations are identified, the BRIWMP team will work with stakeholders to develop concepts that may improve flow conditions while having no impact on the obligations of water providers and needs of water users. For the purpose of this grant application it is assumed that knowledge and input of flow operations and delivery requirements will be provided by municipal water users including Denver Water, Colorado Springs Utilities, and other water providers.

Deliverables: Written documentation of Tasks 1 through 4 will be compiled, summarized, and integrated with the Phase 1 BRIWMP. Maps, tables, figures (i.e. photos or graphs), plates (i.e. GIS mapping and/or CAD drawings), and attachments will be compiled and included as appropriate. Draft and final copies of reports will be submitted to the Advisory Committee for review and comment.

REPORTING AND FINAL DELIVERABLE

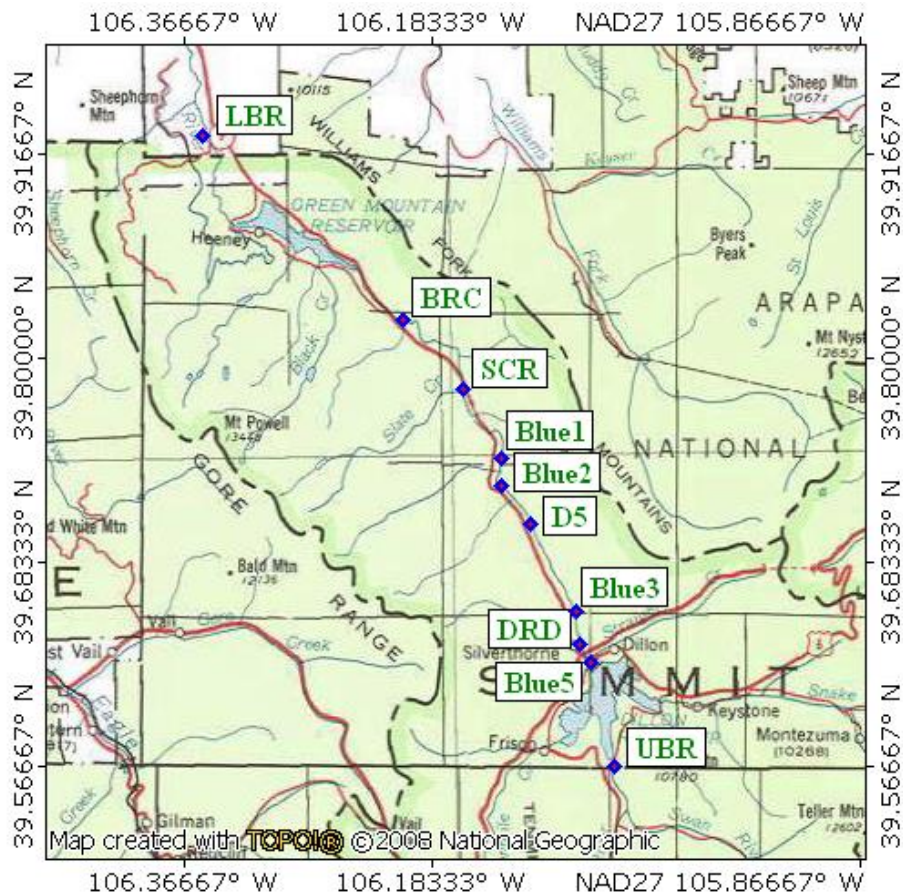
Reporting: BRWG will provide the CWCB a progress report every six months, beginning from the date of the executed contract. The progress report will describe the completion or partial completion of the tasks identified in this statement of work including a description of any major issues that have occurred and any corrective action taken to address these issues.

Final Deliverable: At completion of the project, the applicant shall provide the CWCB with a final report that summarizes the project and documents how the project was completed. This report may contain photographs, summaries of meetings, and engineering reports/designs.

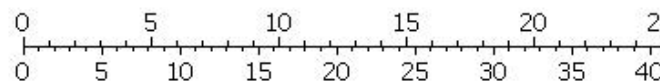
Budget & Timeline Table

Task	Description	Target Start Date	Target Completion Date	CWCB Funds	Private Foundation Grants	Cash	Other Funding In-Kind	Total
1	Develop recommended restoration to optimize conditions under current and future stream flows	Feb. 1, 2021	Sep. 20, 2021	\$56,545	\$56,545	\$8,630	\$1,580	\$123,300
2	Macroinvertebrate sampling	Apr. 1, 2021	Dec. 15, 2021	\$24,750	\$24,750	\$8,500	\$720	\$58,720
3	Temperature profiles and opportunities	Feb. 1, 2021	Jun. 1, 2021	\$9,520	\$9,520	\$4,500	\$5,040	\$28,580
4	Angler use creel survey	May 15, 2021	Sep. 15, 2021	\$0	\$0	\$1,620	\$1,800	\$3,420
5	Continue to engage stakeholders	Feb. 1, 2021	Feb. 14, 2022	\$0	\$7,400	\$1,500	\$6,000	\$14,900
6	Study integration, report, meetings	Nov. 15, 2021	Feb. 14, 2022	\$9,185	\$1,785	\$1,500	\$10,860	\$23,330
	Totals			\$100,000	\$100,000	\$26,250	\$26,000	\$252,250

Macroinvertebrate Testing Sites



**NATIONAL
GEOGRAPHIC**



TN MN
8 1/2°
05/13/20

GPS Coordinates for the ten sample sites:

- UBR,39.56651,-106.04884,2773
- DRD,39.63651,-106.07419,2675
- Blue3,39.65595,-106.07685,2647
- D5,39.70545,-106.11062,2596
- Blue2,39.72713,-106.13210,2574
- Blue1,39.74336,-106.13196,2558
- SCR,39.78217,-106.16035,2502
- BRC,39.82170,-106.20584,2443
- LBR,39.92729,-106.35280,2296
- Blue5,39.62601,-106.06658,2684

Erika Donaghy

Mobile: 303-505-0861 | Email: donaghye@gmail.com

LinkedIn: linkedin.com/in/erika-donaghy-a3b77155

PROFESSIONAL EXPERIENCE

Blue River Watershed Group

December 2019 to Present

Executive Director

- As the only employee of organization, I manage all day to day operations, funding requests, outreach, marketing, social media, and more.

Erika Donaghy Creative Studio

October 2019 to Present

Artist and Owner

- Watercolor and ceramic artist

Water For People

October 2018 to July 2019

Grant Writer

- Write complex, technical grant proposals and reports for a large portfolio of major donors
- Work closely with relationship managers to ensure that all donor communications are catered to donor interests and requirements
- Act as the face of Water For People in the community, at Water For People events, and when accompanying donor trips to the field

Boys & Girls Clubs of Metro Denver

Director of Foundation & Government Relations

August 2017 to October 2018

Grants & Impact Manager

September 2015 to August 2017

- Responsible for a \$1.1 million annual fundraising budget, which includes foundations, corporations, and government entities
- Maintain updated database records on all funder relationships including funding history, proposals, and meetings
- Maintain strong relationships with funders by crafting compelling grant proposals and reports
- Work closely with the Director of Corporate Relations to ensure a holistic stewardship strategy between corporations and their associated foundations
- Act as a bridge between our program team and development team, providing important updates on our programs and their outcomes to the development team
- Represent Boys & Girls Clubs on panel discussions and other community events
- Secured a new 21st Century Grant, totaling \$2.25 million over five years
- Work on the data collection and evaluation of our programs and translate this information for our development team and donors

EDUCATION

Denver Metro Chamber Leadership Foundation, Impact Denver Leadership Program

University of Colorado at Denver, Bachelor of Arts - International Studies

ZheJiang University - Hangzhou, China, Chinese Language and Culture Program

RICHARD VANGYTENBEEK

Landscape Architect

Education: University of Colorado Denver, Colorado
Master of Landscape Architecture. 1983-1986

Humboldt State University Arcata, California
Bachelor of Science in Fisheries Biology 1978 - 1983

Registrations: Registered-CLARB Certified Landscape Architect:
Colorado License No. LA 929
Wyoming License No. LA – 0010C

Awards: 2000 Merit Award CASLA for Amangani Resort

Technical Societies: 1998-2004 Board of Directors, Jackson Hole Land Trust.
1991-1997 Teton County Planning Commissioner and Joint Planning Commission Member.

Professional History:

2012 to Present **Trout Unlimited**
Outreach Coordinator/Project Mgr. Grand Junction, Colorado

- In order to broaden personal work/life experience joined Trout Unlimited bringing expertise in fisheries and landscape architecture to a sportsman's based conservation organization.
- Work is focused on outreach through a TU program entitled Our Colorado River.
- Responsibilities also include project management of fish passage designs and stream management plans throughout the Colorado River basin.

2006 to 2011 **RENDEZVOUS ENGINEERING, P.C.**
Associate-Landscape Architect Jackson, Wyoming

- Joined Rendezvous Engineering in 2006 to develop the firm's landscape architecture and land planning department.
- Responsible for managing 3-6 Landscape Architects, Civil Engineers and support staff.
- Work is focused on large scale residential development, stream/pond/wetland design, reclamation and community design.

2004 to Present
Owner/President

RVG DESIGN
Jackson, Wyoming

- Started Landscape Architecture firm in 2004.
- Single proprietorship focused on commercial and residential design, stream/wetland design and planning and community planning.
- Initiated a working relationship with Rendezvous Engineering, a Civil Engineering/Landscape Architectural firm in Jackson, Wyoming.

1993 – 2004
Associate-Landscape Architect

VLA Inc.
Jackson, Wyoming

- Responsible for obtaining, designing and managing 25-50% of the firm's work.
- Work included resort, commercial and residential design, community planning and pond/wetland/stream design.
- Hired and managed a group of 6-10 Landscape Architects and support staff.

1985 – 1993
Landscape Architect

WYOMING PROPERTIES
Jackson, Wyoming

- Designed and acquired regulatory approval for Spring Creek Ranch, a 1000acre, 400 unit PUD with subdivisions, equestrian center and associated resort infrastructure.
- Designed prospective residential and resort property acquisitions.
- Managed field installation of infrastructure and landscaping for Spring Creek Ranch

1982 and 1983
Fisheries Technician

COLORADO DIVISION OF WILDLIFE
Montrose, Colorado

- Conducted wild trout population studies on Colorado's Blue Ribbon trout streams.
- Studies were conducted using boat electro-shocking mark/recapture technique.
- Conducted back calculated ages on sampled trout using scale analysis.

Representative Work

Spring Creek Ranch

- Type of project: Resort Planning.
- 1000 Acre PUD project located on the East Gros Ventre Butte in Jackson Hole WY consisting of 260 residential units, 80 hotel units, equestrian center and ancillary resort facilities.
- Planning issues included designing within critical mule deer winter range, visual skylining issues and extreme climatic conditions.

Amangani Resort

- Type of project: Resort Planning.
- 40 room exclusive hotel within the Spring Creek Ranch project.
- Responsible for site design and regulatory approval of 40,000 square foot resort hotel on the Gros Ventre Butte in Jackson Hole. Designs insured visual integration into the top of the Butte, innovative grading and drainage solutions, endemic plantings and all accessibility issues for a public building.

Snow King Resort Master Plan

- Type of project: Resort Planning.
- 25 acre resort hotel, commercial property and residential development (>1 million square ft.) located at the base of the Snow King Ski Area within the Town of Jackson, WY.
- Lead landscape architect in collaboration with other design team members responsible for approval of master plan within the Town of Jackson Planned Resort District regulations.

Multi Agency Campus

- Type of project: Town Planning.
- 20 acre site in Jackson, WY involving land owned by TOJ, USFS, FWS, WGF and private interests.
- In collaboration with other design professionals and State and Federal agencies designed a multi-agency campus intended to provide visitor information on the Greater Yellowstone Ecosystem.

Porter Trust Lands Annexation

- Type of Project: Town Planning.
- 825 acre parcel of land adjacent to the southern incorporated boundary of the Town of Jackson.
- Working with Civitas Inc., Town and Teton County planners participated in a public charette process to provide an annexation plan.

North Worland

- Type of Project: Town Planning.
- North end of Worland Wyoming including a 5 mile length of the Bighorn River floodway.
- Developed a community based transportation, economic development and recreation master plan. The plan was successfully designed through a series of community driven planning charettes which balanced the needs of local business and community circulation and recreational needs.

Path and Trailways Master Plan for Worland and Washakie County

- Type of Project: Recreational Planning.
- City of Worland and portions of unincorporated Washakie County.

- Developed a trails master plan in a series of community workshops with City/County representatives, Irrigation Canal company representatives and the public. The system employed public row's, irrigation canal rows and the Big Horn River floodway.

National Museum of Wildlife Art

- Type of Project: Public/Commercial.
- 70 acre site on the Gros Ventre East Butte overlooking the National Elk Refuge.
- On site Landscape Architect responsible for site design and regulatory approval of the project. Design addressed critical Mule Deer winter range, grading which visually integrated the project into the Butte and drainage which supplies irrigation to endemic plantings.

The Wort Hotel Jackson, WY

- Type of Project: Public/Commercial.
- National Historic Designation Wort Hotel located in downtown Jackson, WY.
- Working with WDOT, Town of Jackson and owner, landscape architect was responsible for the design and construction of street front renovations including sidewalks, street trees, benches, planter walls, lighting and signage (regulatory and private).

Flat Creek Design Center

- Type of Project: Public/Commercial.
- 5 acre site in the Town of Jackson incorporating 44 commercial spaces totaling 80,000 square feet.
- Responsible for site design, grading, drainage, planting, irrigation and regulatory approval of a multi-structure professional office and design center.

Private Residence-Indian Springs Ranch

- Type of Project: Residential-Wetland/Stream/Pond Enhancement.
- 6 acre lot located in the Snake River drainage in Jackson Hole.
- Responsible for design, regulatory approval and construction supervision of all plantings, hardscape, 1.5 acre pond/wetland and 1/3 mile stream in a closed loop system (2 million in site construction).

Private Residence-Wilson Wyoming

- Type of Project: Residential-Wetland/Stream/Pond Enhancement.
- 35 acre parcel located in the Fish Creek drainage in Jackson Hole.
- Responsible for design, regulatory approval and construction supervision of ½ mile of new channel with fish ladder, holding areas and spawning beds. Responsible for in stream habitat improvements on Fish Creek as well as all plantings, hardscape, roads, etc. (1.2 million in site construction).

Private Residence-Solitude Subdivision

- Type of Project: Residential-Wetland/Stream/Pond Enhancement.
- 5 acre lot located north of Jackson WY on the Snake River.

- Responsible for design, regulatory approval and construction supervision of a ½ acre pond/slough and wetland system which employed waste irrigation water and supplemental well water to expand a subdivision wide wetland and slough system.

Ellingswood Affordable Housing Project

- Type of Project: Residential-Affordable Housing.
- 36 single family and twin-home affordable residential housing project on 4.16 acres in Jackson WY.
- Responsible for site layout of homes, roads, open space and utilities. Working collaboratively with the Town of Jackson, Teton County Housing Authority and design team the project received regulatory approval and provides price controlled housing to Teton County residents.

Nelson USFS Housing Project

- Type of Project: Residential-Bridger-Teton National Forest.
- 34 residential units on 80 acres of administrative forest land at the east end of Jackson, WY.
- Lead a team of biologists, engineers and planners to map and inventory the project site. Facilitated a community driven design charette process on site design to enable the Bridger-Teton Forest to fulfill a community desire and enable the NEPA process examining the sale of other administrative property in downtown Jackson.

Personal Interests: Mountain biking, endurance trail running, skiing, float fishing.

Contact Information: Cell Phone 307-690-1267
Email r.vangytenbeek@tu.org

Professional References Available Upon Request.

Daniel P. Omasta

30604 County Road 356-6 Buena Vista, CO 81211

Cell: (720) 354-2647

Domasta@tu.org

Summary

Passionate conservation professional dedicated to leveraging community resources and field work to achieve long-term habitat resiliency. Strong communicator and problem-solver focused on developing strategic partnerships to achieve mutual benefits.

Highlights

- Diverse knowledge of riparian conservation and water management
 - Strong background in grant-writing and project management
 - Experience in event coordination and volunteer management
 - Ability to build partnerships and empower community stakeholders
 - Work well individually and as part of a team
 - Strong writing and presentation skills
 - Gallup Strengths: Arranger, Positivity, Ideation, Achiever, Analytical
-

Work Experience

Project Manager & Grassroots Coordinator

February 2017 – Present

Colorado Trout Unlimited

Denver, CO

- Support (25) local chapters of Trout Unlimited throughout the Colorado in organizational development, fundraising, communications, project implementation, and member engagement
- Identify and cultivate community leaders
- Work with community organizations and stakeholders to develop and manage integrated water management plans (currently engaged with Blue River IWMP, Upper Gunnison River IWMP, Upper Arkansas Watershed Partnership)
- Represent Trout Unlimited on the Environment and Recreation Committee of the Arkansas River Basin Round Table
- Manage the Colorado Trout Unlimited Greenback Cutthroat Recovery Team and coordinate conservation projects and funding with local, state, and federal agency partners

Executive Director

May 2014 – February 2017

River Restoration Adventures for Tomorrow

Gunnison, CO

- Helped to start and build a multi-faceted river outfitting company focused on riparian conservation, community engagement, and youth education
- Managed day-to-day operations, grants, and project oversight
- Supported strategic planning and development

- Led conservation projects in the field with paid staff and community volunteers
- Worked closely with various environmental organizations and land management agencies on the Western Slope to identify critical restoration priorities and funding streams
- Helped to develop and manage organizational budget

Project Manager

May 2014 – February 2017

Cooper Property Management

Crested Butte, CO

- Worked as part of a small team to manage several unique ranch properties in the Gunnison Valley.
- Aided in fire hazard mitigation by felling and clearing trees around structures and access points
- Treated noxious plant species through integrated pest management techniques
- Worked closely with property owners to maintain irrigation systems and ditches
- Created healthy trout habitat in private streams on various properties

Ecological Field Technician

July 2014 – October 2014

Black Canyon National Park

Montrose, CO

- Worked as part of a team to monitor and remove invasive plant species from remote areas in the National Park
- Coordinated volunteer groups to perform various plant management work

Outdoor Guide / Conservation Assistant

October 2013 – April 2014

Tongariro River Rafting

Turangi, New Zealand

- Guided grade II-III whitewater, mountain biking, and corporate team-building events
- Helped to set traps for invasive rodent species along remote stretches of the Tongariro River
- Worked as part of a group to conduct bird population surveys, monitor restoration objectives, and engage local community members in the protection of the Blue Duck

Ecological Field Technician

May 2011 – October 2011

Boulder County Parks and Open Space

Longmont, CO

- Removed noxious plant species through integrated pest management practices
 - Helped to design and implement new water gauge system for reservoirs
 - Coordinated teams of volunteers on various restoration projects, including seed collection, planting, and burn pile management
 - Worked closely with ranch managers and other private landowners to mitigate invasive plant species
-

Education & Certifications

Colorado Water Leaders Program Water Education Colorado	Present Denver, CO
Global Information Systems (GIS) Technician ESRI	May 2016 Online
Emergency Medical Technician Crested Butte Fire District	November 2015 Crested Butte, CO
Permaculture Design Lyons Farmette	March 2012 Lyons, CO
B.A. Political Science* University of Colorado * Focus in Environmental Policy & Resource Management	August 2011 Boulder, CO
Renewable Energy Certificate CU Renewable and Sustainable Energy Institute	May 2011 Boulder, CO
Certificate in Western American Studies Center of the American West	May 2011 Boulder, CO

Organization Affiliations

Member Trout Unlimited	June 2016 – Present Gunnison, CO
Board Member Gunnison River Festival	April 2016 – September 2017 Gunnison, CO
Board Member Center of the American West	April 2013 – April 2016 Boulder, CO

References

Available Upon Request



BOARD OF COUNTY COMMISSIONERS

970.453.3402 ph | 970.453.3535 f

208 East Lincoln Ave. | PO Box 68

www.SummitCountyCO.gov

Breckenridge, CO 80424

November 1, 2020

Mr. Chris Sturm
Colorado Water Conservation Board
1313 Sherman St. Rm 721
Denver, CO 80203

RE: Blue River Watershed Group application for the Watershed Restoration Grant funding to help fund Phase 2 of the Blue River Integrated Water Management Plan (IWMP).

Dear Chris Sturm,

The Summit County Board of County Commissioners strongly supports the Blue River Watershed Group application to the Watershed Restoration Grant Program for Phase 2 of the Blue River Integrated Water Management Plan (IWMP).

We are supportive of the efforts to evaluate and monitor the habitat needs for Upper Blue River, and coordination with the Blue River Enhancement Group's efforts to improve the poor quality of trout in the middle segment of the Blue River between Dillon and Green Mountain Reservoir.

We are excited to have a plan that incorporates all of the improvements to our streams, including the 10 Mile Creek improvements, Swan River restoration projects, Pennsylvania Mine, and Peru Creek improvements, as well as continued efforts to improve the impacts of historic mining and reduced stream flows in our basin. Our community appreciates our continuing restoration work, supporting today's interest in our natural environment and recreation based economy.

The Colorado Water Conservation Board has been an essential partner in Summit County's watershed restoration efforts. We are enthusiastic to see this next phase of the Blue River IWMP move forward to support our ongoing restoration efforts.

We hope you will consider funding the next phase of the Blue River IWMP.

Sincerely,

Elisabeth Lawrence
Summit County Commissioner

Thomas C. Davidson
Summit County Commissioner

Karn Stiegelmeier
Summit County Commissioner

THE COLORADO BASIN ROUNDTABLE
C/O P.O. BOX 1120
GLENWOOD SPRINGS, COLORADO
81602

October 30, 2020

Chris Sturm
Colorado Water Conservation Board
Stream Restoration Program
1313 Sherman Street, Room 721
Denver, CO

Dear Chris,

On October 26th, the Next Steps Committee of the Colorado Basin Roundtable voted its unanimous support for the Blue River Watershed Group and Trout Unlimited's grant request to support Phase 2 of the Blue River Integrated Watershed Management Plan. Integrated watershed management planning was highlighted in both Colorado's Water Plan as well as in this Roundtables Basin Implementation Plan. We believe that the work identified in Phase 2 will further the goals of the Colorado Basin Roundtable under Colorado's Water Plan. Accordingly, the Next Steps Committee will recommend that the Colorado Basin Roundtable voice its support for the grant request at its November Meeting.

Regards,



Jason V. Turner, Chair



October 26, 2020

Colorado Water Conservation Board
ATTN: Chris Sturm
1313 Sherman St., Room 721
Denver, CO 80203

Dear Mr. Sturm:

This letter transmits Colorado Springs Utilities (Utilities) continuing support for the Blue River Watershed Group application to the Colorado Watershed Restoration Grant Program for Phase 2 of the Blue River Integrated Water Management Plan (BR-IWMP).

The BR-IWMP will help inform the long-term health and resiliency of the watershed by identifying and developing common community goals through robust stakeholder engagement processes, leveraging current available information on aquatic ecosystem health, providing supporting critical research needs, and producing a plan that documents a science based approach for the continued protection of the Blue River watershed.

We intend to continue to actively participate to increase our understanding of stakeholder needs in this important watershed and work toward productive assessments and future planning that takes into consideration all stakeholders of this resource.

We respectfully request that the Colorado Water Conservation Board and the Watershed Management Planning Committee give the Phase 2 BR-IWMP application favorable consideration. If you have any questions in regards to our support, please do not hesitate to contact Maria Pastore [mpastore@csu.org, (719) 668-8720].

Sincerely,

Abigail Ortega, P.E.
Manager, Water Resources Management
Colorado Springs Utilities



COLORADO **Parks and Wildlife**

Department of Natural Resources

NW Region Aquatics
711 Independent Ave.
Grand Junction, CO 81505
P 970.255.6186 | F 970.255.6111

November 2, 2020

Trout Unlimited
Mr. Richard Van Gytenbeek
115 N. 5th Street, Suite #409
Grand Junction, CO 81501

Dear Richard,

Colorado Parks and Wildlife (CPW) is submitting this letter in support of Trout Unlimited (TU) and the Blue River Watershed Group's (BRWG) application for the Colorado Water Conservation Board's (CWCB) Colorado Watershed Restoration Program grant.

CPW is pleased that TU and the BRWG are seeking additional funds to support the second phase of the Blue River Integrated Water Management Plan (BRIWMP). Phase 1 of the BRIWMP was successful in identifying projects, goals, objectives, and actions that could be carried out in Phase 2. This next effort will include carrying out several projects, including developing flow recommendations, completing macroinvertebrate sampling, evaluating water temperature data, and collaborating with CPW to develop an angler creel survey. Data from both phases will be integrated in this second phase, culminating in an assessment of the Blue River's current function and health. This assessment will ultimately identify which potential projects may improve the aquatic environment and fishery of the Blue River.

CPW looks forward to continuing our partnership with TU and the BRWG to identify limiting factors and to seek potential solutions in restoring the Blue River's aquatic environment and fishery. A second, successful Colorado Watershed Restoration Program grant application will assist TU and the BRWG's efforts to finalize this phase of the Blue River IWMP, resulting in the completion of an effective tool that all water users can understand, appreciate, and maximize benefit from, without further impairment to our aquatic resources.

Sincerely,

Lori M. Martin
NW Region Senior Aquatic Biologist





**Friends of the
Lower Blue River**

Board of Directors

George Resseguie President
Laura Fox Treasurer
Jan Lowrey Secretary
John Hillman
Sam Kirk
John Le Coq
Sharon Sweet
Bob Girvin
Lynn Amstutz
Tom Koehler
Brien Rose

Jonathan Knopf
Executive Director

November 4, 2020

Mr. Chris Sturm
Colorado Water Conservation Board
1313 Sherman St. Rm 721
Denver, CO 80203

Dear Mr. Sturm,

On behalf of Friends of the Lower Blue River, I want to let you know our organization continues to support the Blue River IWMP. We supported this initiative in Phase 1 and we continue to support Phase 2. The Blue River is a vital feeder waterway to the Colorado Water system. The quality and integrity of the Blue is important to all of us in the Blue River Valley.

We welcome our continued involvement in the Blue River IWMP conversation.

Regards,

Jonathan Knopf
Executive Director
Friends of the Lower Blue River



TOWN of FRISCO

PUBLIC WORKS DEPARTMENT

P.O. BOX 4100
FRISCO, COLORADO 80443

November 2, 2020

Mr. Chris Sturm
Colorado Water Conservation Board
1313 Sherman Street, Room 721
Denver, CO 80203

RE: Blue River Watershed Group and Trout Unlimited's application to Colorado Watershed Restoration Grant Program for Phase 2 of the Blue River IWMP.

Dear Mr. Sturm

On behalf of the Town of Frisco and the Department of Public Works, I am writing to express our ongoing support for the Blue River Watershed Group and Trout Unlimited's Integrated Water Management Plan (BRIWMP) for the Blue River basin. Accordingly, we hope that you will positively consider their application to your Watershed Restoration Grant Program for continued work on Phase 2 of the BRIWMP.

The Town of Frisco is reliant on the Tenmile Creek drainage for municipal water supplies and tourism. As stated in our previous letter of support the IWMP supports our goals by:

- 1) Identifying potential threats and opportunities to the management of water resources in the North Tenmile Creek drainage.
- 2) Monitoring upstream sources of contamination to municipal drinking water and providing guidance for remediation of water quality issues.
- 3) Incorporating the values of the Frisco community, town staff and water managers with the goals and resources of the larger watershed.
- 4) Monitoring and helping to maintain adequate flows in the Tenmile drainage to support a healthy fishery, tourism economy and aesthetic values.

The Town of Frisco continues to be an engaged stakeholder in the IWMP process and we support its continued efforts to ensure the long term health and resiliency of the watershed, developing common community goals and continuing to ensure the protection restoration of the Blue River watershed.

Therefore we again encourage you and selection committee to support the continuation of this important process for the Blue River basin.

Thank you for your time and consideration.

Sincerely,

A handwritten signature in blue ink, appearing to read "Jeff Goble", is written over a horizontal line.

Jeff Goble, Director of Public Works / Water Superintendent



Richard Van Gytenbeek
Colorado River Basin Outreach Coordinator
Trout Unlimited
Grand Junction, CO

Dear Richard Gytenbeek,

It is my pleasure to write a letter to support the continued funding of the proposal entitled “Blue River Integrated Water Management Plan” submitted to Colorado Water Conservation Board-Colorado Watershed Restoration Program.

As you know, Blue Valley Ranch is the largest private landowner on the Blue River and we have invested tens of millions of dollars to enhance fish and wildlife habitat on the Ranch. In addition to this effort, Blue Valley Ranch recently committed substantial funding to evaluate primary and secondary production in the Blue River below Green Mountain Reservoir. This information paired with the work identified in this proposal will provide managers with a more in-depth understanding of food webs and limiting factors in the Blue River Watershed.

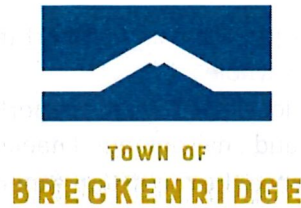
In conclusion, we fully support the efforts of Trout Unlimited and the Blue River Watershed Group as they seek continued funding to 1) Develop flow recommendations for the Blue River between Lake Dillon and Green Mountain Reservoir, 2) Collect additional macroinvertebrate samples from reach one of the study area, 3) Evaluate the feasibility of manipulating temperatures in the Blue River by an alternative release strategy at Dillon Reservoir, 4) Evaluate angler use and creel information and, 5) Integrate data collected during year one and year two of this study to formulate management recommendation to improve the fishery.

Sincerely

Brien Rose

Director of Natural Resources and Fisheries Biologist

Blue Valley Ranch



October 27, 2020

Mr. Chris Sturm
Colorado Water Conservation Board
1313 Sherman Street, Room 721
Denver, CO 80203

RE: Blue River Watershed Group application for Colorado Watershed Restoration Grant Program (Blue River Integrated Water Management Plan – Phase 2)

Dear Mr. Sturm:

I am writing on behalf of the Town of Breckenridge to express our strong support for the Blue River Watershed Group application to the Colorado Watershed Restoration Grant Program to support Phase 2 of its continued efforts with Trout Unlimited in the integrated water management plan on the Blue River (BR-IWMP). This important phase will move forward the most important and immediate of those identified projects from Phase 1, which include developing flow recommendations based on 2-dimensional modeling to predict whether or not changes in morphology could improve stream function; macroinvertebrate sampling in Reach 1 to complete the picture for the Blue River main-stem; evaluating temperature data for Dillon Reservoir to assess whether or not the reservoir could increase the temperature of released water if the dam were modified to provide for mixing stratified water; angler use data; and integration of Phase 2 data with Phase 1 data to provide a clear picture of current stream health in Reaches 1 and 2.

The Town of Breckenridge has long advocated for the health of the Blue River and has played an active role in the protection and restoration of the Upper Blue watershed, and the headwaters of the Colorado River. We have actively acquired and manage nearly 5,000 acres of open space lands in the watershed. In doing so, we have prioritized wetlands and water resources as part of our acquisitions. We have initiated and partnered on multiple river restoration projects, including the recent Blue River and Swan River projects that address water-related impacts left behind by our mining-focused forebears. We have demonstrated a commitment to preventing heavy metals from leaching into water sources via several VCUP projects and an active water treatment plant in French Gulch. As a municipality, we also serve our community and portions of unincorporated Summit County with municipal water service. Our recent investment in a second water treatment plant is intended to serve our community's water needs into the future, while also improving in-stream flows within the Blue River.

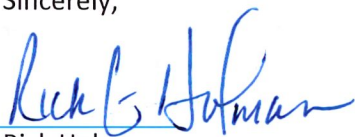
As a significant stakeholder in the Upper Blue Basin, the Town of Breckenridge values the efforts being undertaken by the Blue River Watershed Group and Trout Unlimited to develop an integrated water management plan and further advance important projects. The completion of the prioritized projects in the plan would help our community by:

- Documenting watershed protection and restoration efforts made to date.

- Identifying research gaps and projects that can support the goals of our Open Space & Trails program and our community as a whole.
- Leveraging outside funding with local partners to support a watershed-level plan that incorporates community values and environmental needs.
- Evaluating opportunities to enhance the recreation experience for locals and visitors (boating, angling, wildlife viewing, etc.), thereby increasing economic benefits and long-term community resiliency.
- Recognizing environmental needs and community values to be integrated into long-term planning processes.
- Helping ensure that land use decisions are made with broad stakeholder involvement and consideration of the watershed values.

The Town of Breckenridge values our important role at the headwaters of the Blue River and Colorado River. As a municipality, we serve in a multi-faceted role in the protection, restoration, and responsible use of our local water resources. We greatly appreciate Blue River Watershed Group's role in attempting to develop and advance priority projects as part of an integrated water management plan for the Blue River. We urge you to give this grant application your highest consideration. Thank you for your support of water resources statewide.

Sincerely,



Rick Holman
Town Manager



Public Works • 264 Brian Avenue • P.O. Box 1309 • Silverthorne, Colorado 80498

October 26, 2018

Mr. Chris Sturm
Colorado Water Conservation Board
1313 Sherman Street, Room 721
Denver, CO 80203

RE: Trout Unlimited and Blue River Watershed Group's application for Colorado Watershed Restoration Grant Program (Blue River Integrated Water Management Plan Phase 2)

Dear Mr. Sturm:

On behalf of the Town of Silverthorne, I am writing to express our strong support for Trout Unlimited application to the Colorado Watershed Restoration Grant Program for Phase 2 of the Blue River Integrated Water Management Plan. This project will continue the work identified in the first phase of this plan. This phase will work towards implementing the most important of those projects.

As a community reliant on the Blue River for municipal water supplies, tourism, and strong quality of life, the Town of Silverthorne will significantly benefit from an IWMP process by:

- Identifying the causes of decline for the Gold Medal fishery in the middle section of the Blue River between Dillon Reservoir and Green Mountain Reservoir;
- Furthering the work of the Blue River Enhancement Workgroup (BREW), through additional resources and project support;
- Providing opportunities to engage the various recreational, consumptive, and non-consumptive stakeholders in the Valley to identify mutually beneficial projects and values;
- Highlighting project opportunities and leveraging outside resources for the use of Colorado River Cooperative Agreement funds;
- Ensuring that the environmental health and hydrology of the Blue River continue to support long-term economic and community goals

For the reasons listed above, the Town of Silverthorne fully support the Trout Unlimited application to develop a Blue River IWMP. As an invested stakeholder in the process, we will continue to support this effort through routine staff engagement, planning, and financial resources where it aligns with established goals of the Silverthorne community. We encourage you and the selection committee to support this important process for our community.

Thank you for your time and consideration.

Sincerely,

Tom Daugherty
Silverthorne Director of Public Works

General Government (970) 262-7300 Fax (970) 262-7312

Recreation & Culture (970) 262-7370

Public Safety (970) 262-7320 Community Development (970) 262-7360

Public Works (970) 262-7340