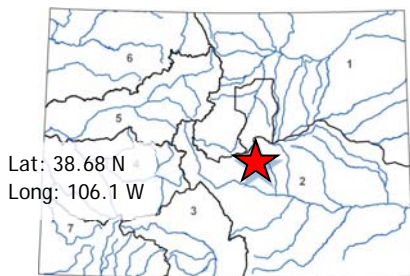




May 2019 Board Meeting

Water Plan Grant Application



L O C A T I O N	
County/Counties:	Chaffee
Drainage Basin:	Arkansas

D E T A I L S	
Total Project Cost:	\$255,880
Water Plan Grant Request:	\$49,851
Recommended amount:	\$49,851
Other CWCB Funding:	\$0
Other Funding Amount:	\$200,909
Applicant Match:	\$5,120
Project Type(s): Study	
Project Category(Categories): Environmental & Recreation	
Measurable Result:	

Increasing at 17% a year, outdoor recreation is booming in Chaffee County, bringing economic opportunity and quality of life to Colorado residents and visitors. Outdoor recreation contributes 33% of Chaffee County economic product. But this rapid growth is creating impacts to watershed health. The Envision Chaffee County Recreation in Balance program will develop community-driven solutions to manage the rapid expansion of recreational impacts on watershed health. This project is one branch of the program aimed at (1) reducing current and future sediment entering waterways and agricultural assets as a result of expanding recreational impacts, and (2) developing transferable tools to manage recreation-related sedimentation.

These grant funds will be used to hire EcoMetrics as technical experts to develop a risk rating system for evaluating the potential for dispersed camping and outdoor recreation sites to deliver anthropogenic sediment to waterways and aquatic habitat. They will then perform a systematic review of aerial imagery to create a spatial database of dispersed use sites rated by sedimentation risk. Sites of the greatest concern will be assessed in more detail using field methods to identify Rapid Response Pilot projects. The grant also allows EcoMetrics to collaborate with developers of the Recreation Impact Monitoring System to integrate sediment monitoring protocols and for Central Colorado Conservancy to implement remediation plans on multiple high-priority sites.

Strong and broad community support is demonstrated by a 4 to 1 local match to requested funding and letters of support from diverse organizations and agencies - including Colorado Parks and Wildlife and Upper Arkansas Water Conservancy District.



Last Updated: June 2018

Colorado Water Conservation Board

Water Plan Grant Application

Instructions

To receive funding for a Water Plan Grant, applicant must demonstrate how the project, activity, or process (collectively referred to as "project") funded by the CWCB will help meet the measurable objectives and critical actions in the Water Plan. Grant guidelines are available on the CWCB website.

If you have questions, please contact CWCB at (303) 866-3441 or email the following staff to assist you with applications in the following areas:

Water Storage Projects
Conservation, Land Use Planning
Engagement & Innovation Activities
Agricultural Projects
Environmental & Recreation
Projects

Anna.Mauss@state.co.us
Kevin.Reidy@state.co.us
Ben.Wade@state.co.us
Alexander.Funk@state.co.us
Chris.Sturm@state.co.us

FINAL SUBMISSION: Submit all application materials in one email to

waterplan.grants@state.co.us

in the original file formats [Application (word); Statement of Work (word); Budget/Schedule (excel)]. Please do not combine documents. In the subject line, please include the funding category and name of the project.

Water Project Summary

Name of Applicant	Central Colorado Conservancy	
Name of Water Project	Envision Recreation in Balance – Sediment Control Project	
CWP Grant Request Amount	\$49,851	
Other Funding Sources <u>Colorado Parks and Wildlife/Arkansas Headwaters Recreation Area</u>	\$20,840	
Other Funding Sources <u>Upper Arkansas Water Conservancy District</u>	\$5,000	
Other Funding Sources <u>Envision Recreation in Balance Program (Colorado the Beautiful Funding)</u>	\$175,069	
Applicant Funding Contribution Central Colorado Conservancy Volunteer Labor	\$5,120	
Total Project Cost	\$255,880	



United States Department of the Interior



BUREAU OF LAND MANAGEMENT
Royal Gorge Field Office
3028 East Main Street
Cañon City, Colorado 81212

In Reply Refer To:
8300 (COF020, LS)

Nick Dellaca
State Trails Program Manager
Colorado Parks and Wildlife
13787 S. Hwy 85
Littleton, CO 80125

Dear Mr Dellaca:

The BLM Royal Gorge Field Office is pleased to submit this letter of support for Envision Chaffee County's grant application. Managing rapid growth in outdoor recreation is a critical challenge for USFS and BLM staff across the west. The Envision Recreation in Balance program provides a unique opportunity to develop new collaborative tools and approaches to manage competing stakeholder needs and ensure protection of wildlife habitat, water quality and watershed health. Envision Chaffee County has connected over 1,500 citizens and 72 nonprofit organizations, businesses and agencies. The level of engagement with agency staff is unprecedented, and very positive. We can and should leverage this engagement with funding to support development of transferable, sustainable systems to collaboratively manage recreation in balance with natural resource health.

Outdoor recreation growth is essential to economic development in the upper Arkansas River basin and in Chaffee County – making it a perfect test ground for new approaches. For example, the Arkansas River is the most rafted river in the world and contains 62% of the state's Gold Medal Waters. Based on Arkansas Headwaters Recreation Area (AHRA) numbers, river related recreation alone generated \$72M in economic impact in 2017 alone – a 16% increase from the previous year. The County also contains one-fifth of the state's fourteeners with an estimated 75,000 to 110,000 visitors per year.

However, outdoor recreation can create negative impacts to wildlife populations, water quality (due to related erosion, sediment generation and human waste), and to overall watershed health. People living on public lands has been increasing and subsequently generating long-term negative impacts in many cases.

As partner agencies, the USFS and BLM experience real barriers to managing the challenges of creating balanced and sustainable recreation. This includes a lack of a management framework – while “management frameworks” – policies, process, best practices and funding are in place to help communities manage fire hazard (for example), similar frameworks are not in place to

engagement and leadership in Chaffee County make this an exceptional opportunity that will be strongly supported by agency staff.

The USFS and BLM plan to extensively support the program. We will provide cash donation of \$4,000 per organization. We will also provide meeting venues and the skilled time of senior staff members including:

- Ben Lara – USFS, PSICC Recreation Program Manager,
- Kalem Lenard – BLM, Assistant Field Manager, Royal Gorge Field Office and
- Linda Skinner—BLM, Recreation Planner, Royal Gorge Field Office

This group will donate an estimated 750 staff hours of the 2.5 year program, an in-kind service of roughly \$48,750. The Agencies will also work to ensure that program results are connected and have impact beyond Chaffee County. We have already shared the program with agency leadership based regionally and nationally, and continue to ensure that lessons learned, new tools and community approaches are captured and shared with offices across our agencies. For example, program results hope to be immediately incorporated into a USFS, PSICC's Forest Management Plan Revision and may also impact the in-progress BLM Resource Management Plan update. We will also be looking for ways to connect trails and new systems to adjacent counties and forests.

Agency staff have been involved with the Envision Process from the inception, and clearly see the value of programs like Envision Recreation in Balance. We will strongly support this program's success and spread program systems and approaches across agencies. Funding the program is a critical support, and we strongly endorse funding this grant application!

Sincerely,



JAMES P. PITTS
District Ranger

cc: blara@fs.fed.us



File Code: 2310
Date: July 16, 2018

Nick Dellaca
State Trails Program Manager
Colorado Parks and Wildlife
State Trails Program

Dear Mr. Dellaca:

Managing rapid growth in outdoor recreation is a critical challenge for USFS and BLM staff across the west. The Envision Recreation in Balance program provides a unique opportunity to develop new collaborative tools and approaches to manage competing stakeholder needs and ensure protection of wildlife habitat, water quality and watershed health. Envision Chaffee County has connected over 1,500 citizens and 72 nonprofit organizations, businesses and agencies. The level of engagement with agency staff is unprecedented, and very positive. We can and should leverage this engagement with funding to support development of transferable, sustainable systems to collaboratively manage recreation in balance with natural resource health. Outdoor recreation growth is essential to economic development in the upper Arkansas River basin and in Chaffee County – making it a perfect test ground for new approaches. For example, the Arkansas River is the most rafted river in the world and contains 62% of the state's Gold Medal Waters. Based on Arkansas Headwaters Recreation Area (AHRA) numbers, river related recreation alone generated \$72M in economic impact in 2017 alone – a 16% increase from the previous year. The County also contains one-fifth of the state's fourteeners with an estimated 75,000 to 110,000 visitors per year.

However, outdoor recreation can create negative impacts to wildlife populations, water quality (due to related erosion, sediment generation and human waste), and to overall watershed health. People living on public lands is growing trend unfortunately and subsequently generating long-term negative impacts in many cases.

As agencies we experience real barriers to managing the challenges of creating balanced and sustainable recreation. This includes: lack of a management framework – while “management frameworks” – policies, process, best practices and funding are in place to help communities manage fire hazard (for example), similar frameworks are not in place to manage recreational impacts. Further there is typically lack of community agreement on what constitutes acceptable impact of effective solutions. Finally, there appears to be a lack of recognition in the outdoor recreation industry of the environmental impacts, focusing solely on the positive economic impacts outdoor recreation brings.

The projects and momentum generated with Envision Chaffee Projects provide a unique occasion to create lasting and exportable solutions to these challenges through facilitated community engagement and an exciting level of skilled in-kind time from experts in many fields – providing more than a 1 to 1 match to requested grant funds. The amazing level of citizen



The Envision Recreation in Balance program is strongly supported by local community, local government and agencies. These partnerships, combined with leadership and management from the Central Colorado Conservancy, provide a framework for successful and transferable program deliverables.

If you have any questions, please contact me at 719-227-5209 or e-mail brett.ackerman@state.co.us.

Sincerely,

A handwritten signature in black ink that reads "Brett Ackerman". The signature is written in a cursive style and is positioned above a light gray rectangular background.

Brett Ackerman
Deputy Regional Manager
CPW Southeast Region

Cc: Rob White, Park Manager, Arkansas Headwaters Recreation Area
Rena Brand, SE Region Water Specialist
Cindy Williams, Central Colorado Conservancy

infrastructure, 3) potential for human waste contamination of water supplies, and 4) visual impacts.

The Recreation in Balance – Sediment Control Program grant funding would provide urgently needed technical resources and support on the ground actions to:

- Identify and prioritize sites where recreation activities are causing erosion and delivering sediment (and perhaps human waste, waste oils etc.) into local aquatic habitats, water storage facilities and agricultural infrastructure,
- Develop treatment plans to address top priority sites,
- Complete on the ground remediation of top priority sites, and
- Connect to the broader Recreation in Balance program, helping to develop a transferable cellphone-based application that will enable user groups and local non-profit organizations to consistently collect data informing ongoing management.

CPW supports this program and will provide funding support for the remediation projects including materials, heavy equipment and equipment operators, as summarized in Table 1 below.

Table 1. AHRA restoration support cost estimate.

Support Provided	Unit Cost	Units	Total Cost
Barriers (Boulders)			\$10,000
Equipment			
Skid Steer T770 Track Loader	\$55/hr	8	\$440
Dump Truck	\$74/hr	8	\$600
Low Boy Trailer	\$125/hr	24	\$3,000
John Deere 310 Backhoe Loader	\$2,000/week	1	\$2,000
Equipment Operator Time	\$60/hr	80	\$4,800
Total			\$20,840



COLORADO Parks and Wildlife

Department of Natural Resources
Southeast Region Office
4255 Sinton Rd
Colorado Springs, CO 80907
P 719.227.5200 | F 719.227.5297

February 4, 2019

Mr. Chris Sturm
Deputy Executive Director
Colorado Water Conservation Board
1313 Sherman St, Room 718
Denver, CO 80203
E-mail: Chris.Sturm@state.co.us

Re: CPW's Support for Envision Recreation in Balance – Sediment Control Grant Request (Chaffee County – Arkansas River Basin)

Dear Mr. Sturm,

Colorado Parks and Wildlife (CPW) supports the Envision Recreation in Balance – Sediment Control grant, and will provide in-kind support from the Arkansas Headwaters Recreation Area (AHRA) totaling \$20,840 for the project (see Table 1 below for details).

The Arkansas Headwaters Recreation Area (AHRA) is recognized as one of the nation's most popular locations for trout fishing and whitewater rafting and kayaking. The Arkansas River is the most commercially rafted river in the United States and is noted for its world-class fishery, including 102 of the 322 miles of Gold Medal trout waters in Colorado.

AHRA visitors also enjoy camping, hiking, picnicking, wildlife watching, mountain biking, rock climbing, and even gold panning along the river's shores, deep canyons, broad valleys and towering mountain peaks found within the upper Arkansas River valley.

Sustainable management of growing outdoor recreation is critical to the local economy. Based on AHRA data, river-related recreation generated \$72 million of economic impact in 2017, a 16% increase from 2016. Outdoor recreation and tourism generates an estimated 33% of Chaffee County's economy, according to the State Demographer.

However, rapidly increasing use is creating challenges that need to be assessed and managed in order to protect both economic assets and watershed health. Of particular concern is increasing impact at the many dispersed campsites along the river corridor. Rapidly increasing use at these sites is creating impairments related to: 1) vegetative denudation, 2) increasing current and potential sediment generation into aquatic habitats, water storage facilities and agricultural



ARKANSAS BASIN ROUNDTABLE

Mr. Chris Sturm
Colorado Water Plan Grant-Environment & Recreation Projects
Colorado Water Conservation Board
1313 Sherman Street, Room 721
Denver, CO 80203

January 22, 2019

Re: Arkansas Basin Roundtable Letter of Support: Recreation in Balance- Sediment Control Project

Dear Mr. Chris Sturm:

At its January 9, 2019 meeting, the Arkansas Basin Roundtable approved a letter of support for the above referenced project for consideration of funding through the Colorado Water Conservation Board's Colorado Water Plan Grant- Environment and Recreation Projects.

The Arkansas Basin Roundtable supports the efforts of the Chaffee County Envision Team in the development of the Sediment Control Project. Specifically, the professional services of EcoMetrics who will provide professional and technical support by undertaking reconnaissance-level survey of dispersed camping sites to evaluate the potential for anthropogenic sedimentation impacts, identifying priority sites to take on as rapid response projects, and helping develop protocols that incorporate sediment impacts into the county-wide Recreation Impact Monitoring System.

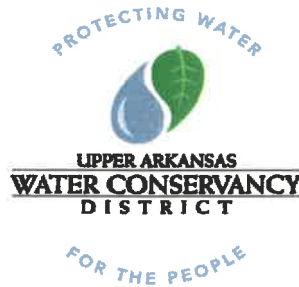
During the January 9th meeting, a recommendation that the applicants work in partnership with the Upper Arkansas Water Conservancy District to identify potential impacts on irrigation ditches and associated water rights was suggested. The applicants have secured a Letter of Support from the Upper District and have met the needs of the Roundtable.

Should you have any questions or concerns, please feel free to contact me at mshea@csu.org or 719-668-8028.

With warm regards,



Mark Shea
ABRT Chair



January 22, 2019

Chris Sturm
Colorado Water Conservation Board
1313 Sherman Street, Room 718
Denver, CO 80203

RE: Letter of Support/In-Kind Matching - Recreation in Balance Sediment Control Project

Dear Mr. Sturm:

The Upper Arkansas Water Conservancy District (the Upper District) supports the efforts of the Chaffee County Envision Team in the development of the Sediment Control Project. Specifically, the District endorses the professional services of EcoMetrics who will provide professional and technical support by undertaking reconnaissance-level survey of dispersed camping sites to evaluate the potential for anthropogenic sedimentation impacts, identifying priority sites to take on as rapid response projects, and helping develop protocols that incorporate sediment impacts into the county-wide Recreation Impact Monitoring System.

Additionally, the Upper District will provide consultation and comments of the hydrology and potential impacts to water rights. The District will provide these services through review and consultation between EcoMetrics and the Upper District's Staff Hydrologist and General Manager. The Upper District will provide these services as in-kind match totaling \$5,000.00.

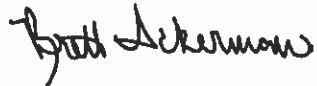
Sincerely,

Ralph L. Scanga
General Manager

The Envision Recreation in Balance program is strongly supported by local community, local government and agencies. These partnerships, combined with leadership and management from the Central Colorado Conservancy, provide a framework for successful and transferable program deliverables.

If you have any questions, please contact me at 719-227-5209 or e-mail brett.ackerman@state.co.us.

Sincerely,

A handwritten signature in black ink that reads "Brett Ackerman". The signature is written in a cursive, flowing style.

Brett Ackerman
Deputy Regional Manager
CPW Southeast Region

Cc: Rob White, Park Manager, Arkansas Headwaters Recreation Area
Rena Brand, SE Region Water Specialist
Cindy Williams, Central Colorado Conservancy

infrastructure, 3) potential for human waste contamination of water supplies, and 4) visual impacts.

The Recreation in Balance – Sediment Control Program grant funding would provide urgently needed technical resources and support on the ground actions to:

- Identify and prioritize sites where recreation activities are causing erosion and delivering sediment (and perhaps human waste, waste oils etc.) into local aquatic habitats, water storage facilities and agricultural infrastructure,
- Develop treatment plans to address top priority sites,
- Complete on the ground remediation of top priority sites, and
- Connect to the broader Recreation in Balance program, helping to develop a transferable cellphone-based application that will enable user groups and local non-profit organizations to consistently collect data informing ongoing management.

CPW supports this program and will provide funding support for the remediation projects including materials, heavy equipment and equipment operators, as summarized in Table 1 below.

Table 1. AHRA restoration support cost estimate.

Support Provided	Unit Cost	Units	Total Cost
Barriers (Boulders)			\$10,000
Equipment			
Skid Steer T770 Track Loader	\$55/hr	8	\$440
Dump Truck	\$74/hr	8	\$600
Low Boy Trailer	\$125/hr	24	\$3,000
John Deere 310 Backhoe Loader	\$2,000/week	1	\$2,000
Equipment Operator Time	\$60/hr	80	\$4,800
Total			\$20,840



COLORADO

Parks and Wildlife

Department of Natural Resources
Southeast Region Office
4255 Sinton Rd
Colorado Springs, CO 80907
P 719.227.5200 | F 719.227.5297

February 4, 2019

Mr. Chris Sturm
Deputy Executive Director
Colorado Water Conservation Board
1313 Sherman St, Room 718
Denver, CO 80203
E-mail: Chris.Sturm@state.co.us

**Re: CPW's Support for Envision Recreation in Balance – Sediment Control Grant
Request (Chaffee County – Arkansas River Basin)**

Dear Mr. Sturm,

Colorado Parks and Wildlife (CPW) supports the Envision Recreation in Balance – Sediment Control grant, and will provide in-kind support from the Arkansas Headwaters Recreation Area (AHRA) totaling \$20,840 for the project (see Table 1 below for details).

The Arkansas Headwaters Recreation Area (AHRA) is recognized as one of the nation's most popular locations for trout fishing and whitewater rafting and kayaking. The Arkansas River is the most commercially rafted river in the United States and is noted for its world-class fishery, including 102 of the 322 miles of Gold Medal trout waters in Colorado.

AHRA visitors also enjoy camping, hiking, picnicking, wildlife watching, mountain biking, rock climbing, and even gold panning along the river's shores, deep canyons, broad valleys and towering mountain peaks found within the upper Arkansas River valley.

Sustainable management of growing outdoor recreation is critical to the local economy. Based on AHRA data, river-related recreation generated \$72 million of economic impact in 2017, a 16% increase from 2016. Outdoor recreation and tourism generates an estimated 33% of Chaffee County's economy, according to the State Demographer.

However, rapidly increasing use is creating challenges that need to be assessed and managed in order to protect both economic assets and watershed health. Of particular concern is increasing impact at the many dispersed campsites along the river corridor. Rapidly increasing use at these sites is creating impairments related to: 1) vegetative denudation, 2) increasing current and potential sediment generation into aquatic habitats, water storage facilities and agricultural



Area of transported sediment

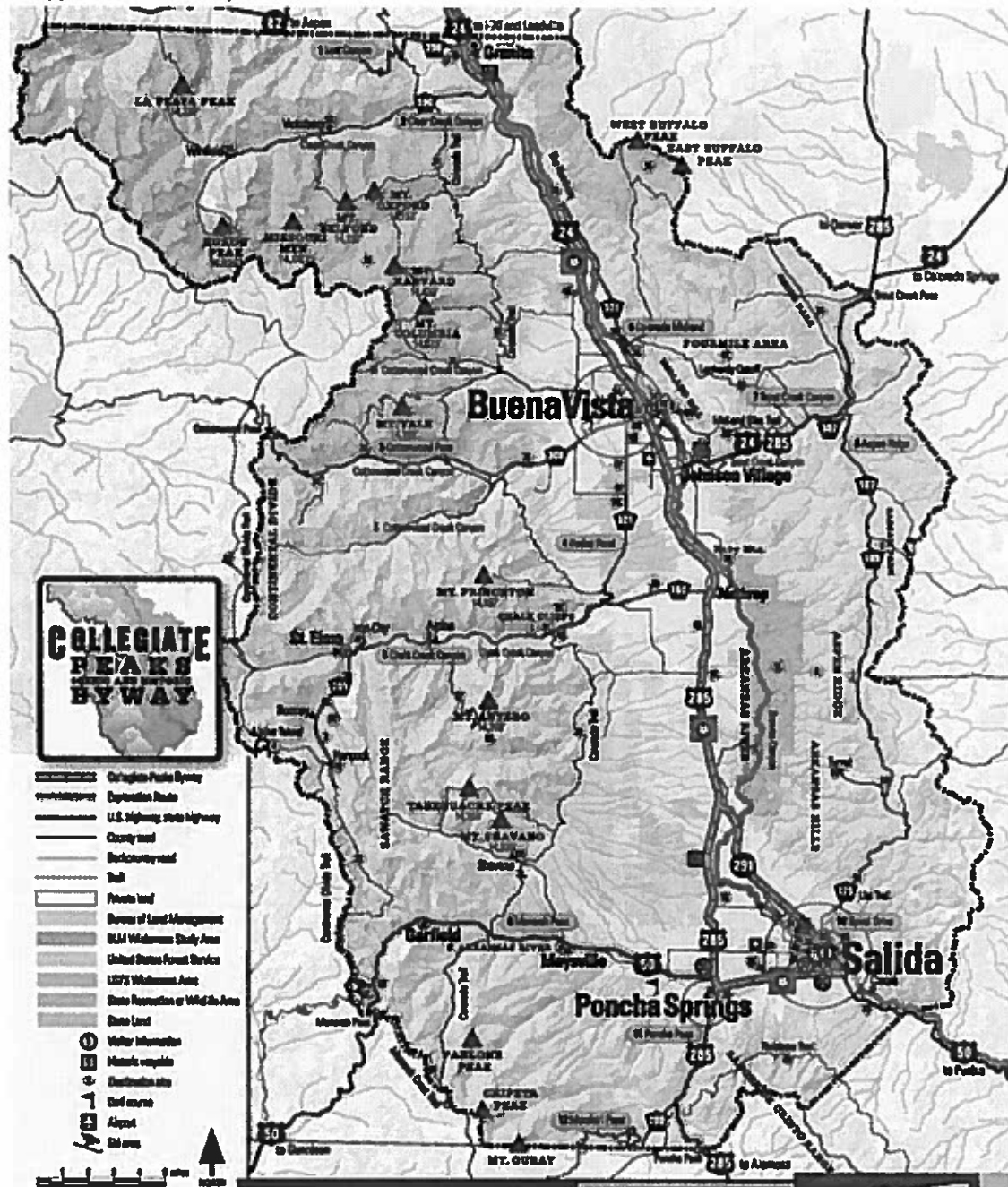
Campsite and sediment source

Key Milestones (TASKS)	June-Sep 2019	Oct-Dec 2019	Jan-Mar 2020	Apr-Jun 2020	Jul-Sep 2020	Oct-Dec 2020	Jan-Mar 2021	Apr-Jun 2021	Jul-Sep 2021	Oct-Dec 2021
Envision Recreation in Balance Program										
Recreation in Balance – Sediment Control Project										
Task 1 – Evaluate sediment potential of recreation sites										
Task 2 – Rapid Response Pilot Projects										
Task 3 –Recreation Impact Monitoring System										
Task 4 – Coordination, outreach and reporting										

Figure 2. Google Earth display of the 100,000ac jointly-managed USFS-BLM Fourmile Travel Management Area illustrating growth of dispersed campsites from 2004 to 2018. Blue dots identify sites unchanged since 2004, green sites have footprints expanded 2 to 5 times, red sites are new. Of the 292 current sites, two thirds have expanded or are new since 2004. The Recreation in Balance – Sediment Control Project will work to evaluate current and potential erosion and sediment generation from such campsites, develop tools to add sediment generation data to the locational information shown here, and accelerate remediation of top priority areas. Data from GARNA Friends of Fourmile Chapter.



Figure 1. Chaffee County map demonstrating the diversity of recreational assets. Project deliverables will be applied at this county-wide scale.



Letters of support and commitment for this grant application include the following, attached to this application:

1. Upper Arkansas Water Conservancy District (support and commitment)
2. Arkansas Basin Round Table
3. Chaffee County Board of Commissioners
4. Colorado Parks and Wildlife – Arkansas Headwaters Recreation Area (support and commitment).

Letters of support were also provided to the foundational Envision Recreation in Balance program by the USFS, BLM, all local Municipalities, and diverse non-profit organizations. Considering efficient use of community and agency time, the grant team elected to attach these original letters rather than duplicate efforts. They are attached as letters of support 5 through 8, demonstrating the very broad community awareness of and support for the Envision Recreation in Balance program – a key indicator of program short term and long term success.

Through the Envision Chaffee County Process, engaging 1,500 citizens, the community has identified management of rapidly growing outdoor recreation use in balance with watershed health as a top priority. The Recreation in Balance program is supported by the GOCO/CWP Colorado the Beautiful Grant program and land management agencies because it will develop new transferable tools and approaches to achieve this goal, not only in Chaffee County, but across Colorado communities facing similar challenges. The requested Recreation in Balance – Sediment Control Program funding builds on this foundation to accelerate remediation and to ensure that transferable tools include measurement of current and future anthropogenic erosion and sediment generation of specific concern to the Arkansas Basin Round Table, Upper Arkansas Water Conservancy District, agricultural producers, local government and agencies.

implementation through Colorado Mountain Club, USFS, Greater Arkansas River Nature Association and others.

Task 4 – Coordination, outreach and reporting

Deliverable: Reporting and participation in the Envision Recreation in Balance community process to ensure that resulting tools are transferable and integrated into sustainable systems.

The Sediment Control program leverage community and key stakeholder engagement provided by the foundational Envision Recreation in Balance program. This work includes engagement of diverse user groups (ex. motorized, non-motorized, river users), key stakeholders (ex. business community, agricultural community, water providers), and the community at large to develop tools, systems and actions that are embraced by the community and are, therefore, implementable and sustainable.

Total funding for this work is approximately \$41,000 as follows:

Requested Grant Funds (\$9,000)

- \$9,000 cash will be used for EcoMetrics and Conservancy staff to create a short summary report of the Recreation In Balance Sediment Control Project, describing the methods, results, and potential remediation outcomes, and to participate in stakeholder meetings to ensure the sediment management tools are adopted into the larger program and sustainable tools.

Matching Funds (\$32,000)

- The Envision Recreation in Balance foundational program includes funding for professional facilitation and communication services supporting stakeholder and community engagement.

Project Timeline

A project timeline is provided in Table 1. Reconnaissance evaluation of recreation sites will be completed in the 2019 field season. Rapid response project planning and implementation will occur in late 2019, through the 2020 field season. Sediment-related tools will be integrated with the Recreation Impact Monitoring during the summer of 2020. Project coordination and engagement will be ongoing, with reporting and closeout by December 2020. All project work will be integrated with the foundational Envision Recreation in Balance program.

Community Support and Matching Funds

The Recreation in Balance – Sediment Control grant is strongly supported by diverse stakeholders, as evidenced by a 4 to 1 match of requested funds and eight attached letters of support.

The \$49,851 requested from the CWCB is matched by \$206,000. The match includes \$31,000 directly supporting this grant (from Colorado Parks and Wildlife - AHRA, Upper Arkansas Water Conservancy District and Central Colorado Conservancy volunteers), and \$175,000 from the Recreation in Balance Program which provides the platform to make this project implementable and sustainable.

treatments include signage, physical barriers, re-vegetation with native plants, re-grading, and sediment and erosion control structures.

The Rapid Response Pilot Project budget includes approximately \$55,000 as follows:

Requested Grant Funds (\$16,000):

- \$13,000 will be used by the Conservancy's Restoration Specialist to coordinate and execute pilot projects and by the Conservancy's Volunteer Coordinator to apply volunteer services.
- \$3,000 will be used to hire EcoMetrics to consult on site-specific treatment plans for the selected pilot projects.

Matching Funds (\$39,000)

- \$21,000 is donated by Colorado Parks and Wildlife (AHRA) for barrier boulders (\$10,000), heavy equipment rental (\$5,000) and equipment operators (\$5,000).
- \$5,000 is donated by Conservancy volunteers who will provide labor such as seeding and installation of native vegetation.
- \$13,000 is provided by the foundational Recreation in Balance program, which includes restoration materials funded by the USFS, BLM and County of Chaffee and professional staff time to help identify areas of concern.

Task 3 –Recreation Impact Monitoring System

- e) **Deliverable:** Development of a transferable Recreation Site Sediment Risk Assessment Tool, and integration of that tool in the Envision Recreation Impact Monitoring system.

The Conservancy is developing a Recreation Impact Monitoring System as part of the Recreation In Balance program. This grant will allow the Conservancy to integrate sedimentation risk into the monitoring system so that impacts can be identified and addressed quickly as they arise.

The Recreation Impact Monitoring System development and implement budget is \$135,000 as follows:

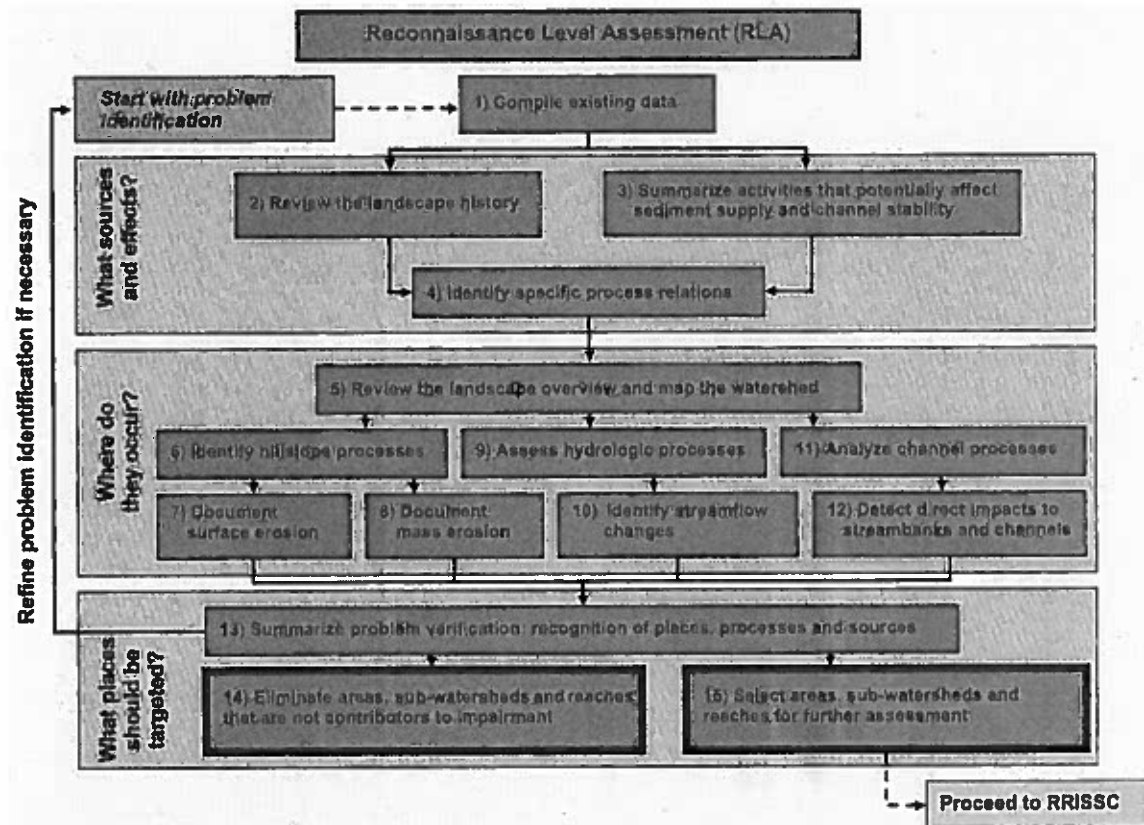
Requested Grant Funds (\$6,000)

- \$6,000 will be used to hire EcoMetrics to collaborate with the developers of the Recreation Impact Monitoring System to make sure protocols are relevant, achievable, and useful in identifying relevant changes to the sediment risk ratings of monitored sites. EcoMetrics will also be available to help address technical issues related to the sediment portion of the system during pilot testing.

Matching Funds (\$129,000)

- All other costs related to the development of the Recreation Impact Monitoring System are provided as cash and in-kind match through the foundational Recreation in Balance program. This includes \$129,000 for system and cell phone based application development and

the analyses outlined in the RLA step of WARSSS and applying results in the WARSSS framework is important for understanding the magnitude of sediment supply from recreation sites relative to the qualitative evaluation of other natural and anthropogenic sediment sources (see graphic below).



EcoMetrics will perform more detailed field assessment of the highest priority sites using the general approach and relevant protocols described in the Rapid Resource Inventory for Stability and Sediment Consequences (RRISSC) phase of WARSSS. Sites in and along waterways and riparian areas are evaluated for direct impacts on stability and erosion potential. Upland sites are evaluated primarily on the potential for delivering anthropogenic sediment to waterways and aquatic habitats. The RRISSC steps related to hillslope processes (mass erosion, roads, and surface erosion) are relevant for these. These evaluations address both the potential for impact (degree of sedimentation and consequences) on a watershed scale as well as the potential for mitigating the impacts through remediation, restoration, or alternative land management actions.

Task 2 – Rapid Response Pilot Projects

Deliverable: Planning and execution of Rapid Response Projects on top priority sites.

Central Colorado Conservancy, in collaboration with appropriate land management agencies, will implement as many Rapid Response Pilot Projects as possible to serve as demonstration sites. Expected

- c) Development of a transferable Recreation Site Sediment Risk Assessment Tool, and integration of that tool in the Envision Recreation Impact Monitoring system and application,
- d) Reporting and participation in the Envision Recreation in Balance engagement process to ensure that resulting tools are transferable and integrated into sustainable systems.

EcoMetrics will provide professional and technical support by undertaking reconnaissance-level survey of dispersed camping sites to evaluate the potential for anthropogenic sedimentation impacts, identifying priority sites to take on as rapid response projects, and helping develop protocols that incorporate sediment impacts into the county-wide Recreation Impact Monitoring System. Central Colorado Conservancy's restoration specialists will advance Rapid Response Pilot Project recommendations on select sites and monitor results.

Tasks

Task 1 – Evaluate sediment potential of recreation sites

Deliverable: A Reconnaissance Level Assessment of current and future risk for sediment entering waterways as a result of expanding recreational sites,

Colorado Central Conservancy will oversee a study to evaluate sedimentation impacts from recreation on waterways and aquatic habitat in Chaffee County. The goal is to identify areas where recreation activities cause risk of sedimentation on rivers, streams, lakes, wetland, and agricultural ditches.

The task is funded by approximately \$24,000 as follows:

Requested Grant Funds (\$19,000)

- \$19,100 will be used for the Conservancy to hire EcoMetrics as prime investigators.

Matching Funds (\$5,000)

- \$5,000 of professional services will be provided by the Upper Arkansas Water Conservancy District's Staff Hydrologist and General Manager to consult on hydrology and potential impacts to water rights, including agricultural water infrastructure (see Letter of Support 1 attached).

As prime investigators on the study, EcoMetrics will employ the principles of WARSSS (Watershed Assessment of River Stability and Sediment Supply¹) Reconnaissance Level Assessment (RLA) to develop a risk rating system for evaluating the potential of sites used for dispersed camping and other outdoor recreation uses to cause sedimentation impacts. Research scientists will review any existing data and studies that are provided and meet with management agency personnel and other local experts to identify known impact sites. These efforts will be followed-up with a systematic review of aerial imagery to create a spatial database of identified dispersed use sites rated by sedimentation risk. Going through

¹ Rosgen, D.L. (2006) Watershed Assessment of River Stability and Sediment Supply (WARSSS). Wildland Hydrology Press. Fort Collins, CO

Statement of Work: Recreation in Balance – Sediment Control Project

Scope and Purpose

The Recreation in Balance –Sediment Control Project is a time-limited opportunity to build on the funded and in-progress *Envision Recreation in Balance* program, to decrease current and future sediment entering waterways as a result of expanding recreational use and impacts. Strong and broad community support is demonstrated by a 4 to 1 local match to requested funding and letters of support from diverse organizations and agencies.

The project is urgently needed. Increasing at a rate of 17% a year, outdoor recreation is booming in Chaffee County, bringing both economic opportunity and improved quality of life to residents and visitors (Figure 1). Outdoor recreation contributes 33% of Chaffee County economic product. But this rapid growth is creating impacts to watershed health. For instance, the de-vegetated footprint of dispersed campsites in some public lands has increased 110% over the past 10 years, greatly increasing current and potential erosion and sediment delivery into aquatic habitats, water storage vessels and agricultural infrastructure (Figures 2 and 3). Concern has also been raised about increasing potential for contamination of water supplies by human waste, impacts to riparian habitats and visual impacts.

The in-progress *Envision Recreation in Balance* program will develop community-driven, transferable solutions to manage the rapid expansion of recreational impacts on watershed health, providing:

- 1) A Recreation and Natural Resource Atlas will capture the current state of county-wide recreation amenities (ex. roads, trails, dispersed campsites) and natural resource assets (ex. critical habitat, riparian zones, agricultural use areas).
- 2) A Recreation Impact Monitoring System will measure recreational impacts (ex. sediment generation potential, habitat impacts at dispersed campsites) and collect consistent, county-wide impact data using a cellphone-based application and local user group volunteers.
- 3) Rapid Response Projects will identify (but not remediate) sites that need to be addressed.
- 4) Community Balanced Recreation Plan Recommendations will guide future recreation development balanced with watershed protection, in coordination with existing local, state and federal agency planning efforts.

The *Recreation in Balance - Sediment Control Project* in this grant request builds on the foundational *Envision* program above, leveraging momentum, community engagement, transferable tool development and management. The project incorporates professional services to specifically address erosion and sedimentation risk, of particular concern to water providers, and to accelerate remediation.

Requested grant funds will deliver:

- a) A Reconnaissance Level Assessment of current and future risk for sediment entering waterways as a result of expanding recreational sites,
- b) Planning and execution of Rapid Response Projects on top priority sites,



Colorado Water Conservation Board
Water Plan Grant - Detailed Budget Estimate
Fair and Reasonable Estimate

Date:* February 1, 2019
Name of Applicant:* Central Colorado Conservancy
Name of Water Project: Envision Recreation in Balance - Sediment Control

Scope of Work

Sub-task	Estimated Hours				Subcontractors										Project Total	CWCBC Funds	Other Matching Funds													
	Central Colorado Conservancy Restoration Specialists	Central Colorado Conservancy Volunteer Coordinator	Central Colorado Conservancy Miles	Subtotal	EcoMetrics (research scientist)	EcoMetrics (miles)	volunteer labor (organized by Central Colorado Conservancy)	materials CPW (Boulders, fencing, signs, etc.)(AHRA)	Heavy equipment (AHRA)	Equipment Operators (AHRA)	UAWCD Professional Staff (Hydrologist)	Recreation in Balance Grant (Materials)	Recreation in Balance Grant (Time)	Subtotal																
	\$	45	\$		35	\$	0.535	\$	32	\$	10,000	\$	76					\$	60	\$	120	\$	13,000	\$	65	\$				
Task 1 - Evaluate sediment potential of recreation sites																														
Review existing data and reports				0	\$	-	16	100													\$	1,974	\$1,974	\$	1,974	\$	-			
Consult with agency personnel and local experts				0	\$	-	24	0													\$	2,880	\$2,880	\$	2,880	\$	-			
Remote evaluation using aerial imagery		0		0	\$	-	24	0													\$	2,880	\$2,880	\$	2,880	\$	-			
Create spatial database of sites by risk rating		0		0	\$	-	32	0													\$	3,840	\$3,840	\$	3,840	\$	-			
Field assessment of priority sites		0		0	\$	-	60	600													\$	7,521	\$7,521	\$	7,521	\$	-			
Assess sites impacting agricultural infrastructure					\$	-						42									\$	5,004	\$5,004			\$	5,004			
Task 2 - Rapid Response Projects																														
Identify pilot projects and implement treatments		207		80		1100	\$	12,704	30	100											\$	3,654	\$16,357	\$	16,142	\$	215			
Implement treatments (USFS/BLM Materials)					\$	-					160	1	80	80							\$	13,000	\$13,000			\$	13,000			
Task 3 - Recreation Impact Monitoring System																														
Develop sediment monitoring protocols					\$	-	24	0													\$	2,880	\$2,880	\$	2,880	\$	-			
Integrate sediment protocol in RIMS					\$	-	8	0													\$	960	\$960	\$	960	\$	-			
Pilot testing					\$	-	16	100													\$	1,974	\$1,974	\$	1,974	\$	-			
Develop full system and cell phone application					\$	-																		1990	\$	129,350	\$129,350		\$	129,350
Task 4 - Coordination, outreach and reporting																														
Project coordination and meetings					\$	-	16	200													\$	2,027	\$2,027	\$	2,027	\$	-			
Community meetings and presentations					\$	-	16	100													\$	1,974	\$1,974	\$	1,974	\$	-			
Summary report					\$	-	40														\$	4,800	\$4,800	\$	4,800	\$	-			
Community engagement and full program coordination					\$	-																		500	\$	32,500	\$32,500		\$	32,500
Subtotal Hours																														
Subtotal Labor/ Subcontractor cost		207		80		1100			306	1200	160	1	80	80	42	1	2490													
TOTAL		\$9,315		\$2,800		\$589		12,704	\$36,720	\$642	\$5,120	\$10,000	\$6,040	\$4,800	\$5,004	\$13,000	\$161,850		243,176	\$255,880	\$255,880	\$	49,851	\$	206,029	\$	49,851	\$	206,029	

NOTES:
*When the application has been approved by the Board, and this budget document is being submitted for PO or contract processing, the "Name of Applicant" field MUST be changed to "Name of GRANTEE" and remove the DATE field.

Ensure that pagination is included and correct, i.e., Page 1 of 2, Page 2 of 2, etc.

Last Updated: June 2018

Submittal Checklist	
X	I acknowledge the Grantee will be able to contract with CWCB using the Standard Contract .
Exhibit A	
X	Statement of Work ⁽¹⁾
X	Budget & Schedule ⁽¹⁾
N/A	Engineer's statement of probable cost (projects over \$100,000)
x	Letters of Matching and/or Pending 3 rd Party Commitments ⁽¹⁾
Exhibit C	
x	Map (if applicable) ⁽¹⁾
x	Photos/Drawings/Reports
x	Letters of Support (Optional)
x	Certificate of Insurance (General, Auto, & Workers' Comp.) ⁽²⁾
x	Certificate of Good Standing with Colorado Secretary of State ⁽²⁾
x	W-9 ⁽²⁾
N/A	Independent Contractor Form ⁽²⁾ (If applicant is individual, not company/organization)
Engagement & Innovation Grant Applicants ONLY	
N/A	Engagement & Innovation Supplemental Application ⁽¹⁾

(1) Required with application.

(2) Required for contracting. While optional at the time of this application, submission can expedite contracting upon CWCB Board approval.

Last Updated: June 2018

The **Envision Recreation in Balance - Sediment Control Project** builds on and supports the above deliverables, by providing professional skills from **Ecometrics** to ensure the resulting tools and projects address anthropogenic sediment generation from the recreation sites – which may impact aquatic habitats, result in sedimentation to local water storage vessels and irrigation infrastructure, and impact the local recreation-driven economy. The program also accelerates on the ground action, by rapidly identifying areas of greatest impact, planning Rapid Response Projects, and pilot testing remediation plans on multiple high-priority sites.

Program deliverables have been designed and coordinated with local government and local agency leadership to directly support additional regional planning efforts as follows:

1. Program recommendations and tools will be use to inform the USFS Forest Management Plan (planned for 2019-2020 update),
2. The Recreation Impact Monitoring System will help inform use of funds generated by Chaffee County Ballot issue 1A – a County tax measure passed in November 2018.
3. Program results will be included as a chapter in the Chaffee County Comprehensive Plan Update (planned for May 2019-August 2020).

Previous CWCB Grants, Loans or Other Funding

List all previous or current CWCB grants (including WSRF) awarded to both the Applicant and Grantee. Include: 1) Applicant name; 2) Water activity name; 3) Approving RT(s); 4) CWCB board meeting date; 5) Contract number or purchase order; 6) Percentage of other CWCB funding for your overall project.

The Central Colorado Conservancy has received two Colorado Healthy Rivers Grants, both in the former name of the organization which was “Land Trust of the Upper Arkansas”.

First

1. Land Trust of the Upper Arkansas
2. Establish Baseline Conditions for the South Arkansas - Watershed Assessment
3. Chris Sturm/Allan Smith/Steven Shull
4. Date not recorded
5. PO # OE PDA 1300000097
6. Awarded \$15,500 out of a \$35,000 project or 44.2% of the project.

Second

1. Land Trust of the Upper Arkansas
2. Monitoring Water Quality along the South Arkansas River
3. Not sure what they want here - worked with Chris Sturm
4. Date not recorded
5. N/A
6. Awarded \$3,837 from CWCB out of a \$5,276 project. or 72.7 % of the project.

Taxpayer Bill of Rights

The Taxpayer Bill of Rights (TABOR) may limit the amount of grant money an entity can receive. Please describe any relevant TABOR issues that may affect your application.

None.

Last Updated: June 2018

- 3) Improve water quality as it relates to the environment and/ or recreation.

In addition, the program fits closely with the Colorado Water Plan sections 7.1 and 10.3F (included below). Recreation and tourism contributes 33% of the Chaffee County economic product. Much of this recreation relates to the Arkansas River, which is not only the most rafted in the United States, generating over \$80M in gross revenues in 2017, but also contains 32% of the state's Gold Medal Trout Water. The Sediment Control Project works to directly protect economic value, by protecting local water quality, aquatic habitats and riparian corridors from increasing sediment generation associated with recreational use, including campsites, roads and trails. The program will not only identify and begin to address top priority impact areas, but also deliver transferable tools – connected to the broader Recreation in Balance program applications – that can systematically address similar challenges state-wide.

Colorado Water Plan, Section 7.1:

- 1) Manage sediment generation on forested lands, manage fire risk, address forest roads with failing/non-existent storm water management infrastructure, protection of wetland and riparian corridors.

Colorado Water Plan Section 10.3 F Watershed Health, Environment and Recreation:

- 1) Enhance environmental and recreational economic value.
- 2) Protect and enhance river-based environments and recreational opportunities that support local and statewide economies and are important for the enjoyment of future generations.
- 3) Promote self-sustaining fisheries and functional riparian habitats to promote long-term resiliency.
- 4) Protect and restore watersheds critical to water infrastructure, environmental and recreational areas.

Related Studies

Please provide a list of any related studies, including if the water project is complementary to or assists in the implementation of other CWCB programs.

The Envision Recreation in Balance – Sediment Control Project both builds upon and supports other major regional planning and watershed health programs.

The program builds on the **Envision Recreation in Balance** Program, funded by CPW, USFS, BLM and County of Chaffee and supported by all three county municipalities and more than fifteen non-profit organizations and user groups (see letters of support attached). The program includes four deliverables:

- 1) **A Recreation and Natural Resource Atlas** will capture the current state of county-wide recreation amenities and natural resource assets.
- 2) **A Recreation Impact Monitoring System** will measure recreational impacts (ex. sediment generation potential, habitat impacts at dispersed campsites) and collect consistent, county-wide impact data using a cellphone-based application and local user group volunteers.
- 3) **Rapid Response Projects** will identify existing impacts that need to be addressed immediately (ex. reclaiming campsites generating large sediment loads into aquatic habitats).
- 4) **Community Balanced Recreation Plan Recommendations** will guide new recreation development and watershed protection, in coordination with existing local, state and federal agency planning efforts.

Last Updated: June 2018

Water Project Justification

Provide a description of how this water project supports the goals of [Colorado's Water Plan](#), the most recent [Statewide Water Supply Initiative](#), and the applicable Roundtable [Basin Implementation Plan](#) and [Education Action Plan](#). The Applicant is required to reference specific needs, goals, themes, or Identified Projects and Processes (IPPs), including citations (e.g. document, chapters, sections, or page numbers).

The proposed water project shall be evaluated based upon how well the proposal conforms to Colorado's Water Plan Framework for State of Colorado Support for a Water Project (CWP, Section 9.4, pp. 9-43 to 9-44;)

Requested funding builds on the county-wide Envision Recreation in Balance Program, ensuring that resulting transferable tools and implemented projects address current and potential anthropogenic sediment delivery to waterways and aquatic habitats.

The project fits with **CWP Section 9.4** as follows:

- 1) **Demonstrates collaboration**, with full engagement by land management agencies (CPW, BLM, USFS), local government (county and municipal), 12 non-profit organizations, diverse user groups and roughly 1,500 citizens. This is documented by letters of support. The project is also part of the foundational Envision Recreation in Balance program, which includes professional services for stakeholder mapping and facilitated community engagement.
- 2) **Addresses an identified water gap**, by addressing sources of sedimentation to water storage vessels, aquatic habitats and agricultural infrastructure.
- 3) **Demonstrates sustainability** by: A) Delivering leading-edge tools that will not only be implemented through a county-wide recreation impact monitoring system, but can also be transferred to communities facing similar challenges related to state-wide recreation economy growth. B) Mitigating economic and social impacts of recreation-related erosion and sediment generation to the rural Chaffee county economy and local agricultural operators. C) Partnering with local agencies and government to ensure the resulting data and plans will be incorporated in the regional and county-wide planning efforts including the USFS Management Plan Update and the Chaffee County Comprehensive Plan update.
- 4) **Establishes fiscal and technical feasibility** by: A) providing a 4 to 1 match to grant funds with \$206,000, including \$31,000 of direct local match and \$175,000 in matching funds related to the Envision Recreation in Balance program (with cash and in-kind funding from CPW, GOCO, BLM, USFS, County of Chaffee and local volunteers). B) Leveraging dollars from the CPW/GOCO Colorado the Beautiful Grant program (as above). C) Building on the in-progress Envision Recreation in Balance foundational program to complete work quickly and to capture existing momentum, community engagement and volunteer services.

The **Recreation in Balance: Sediment Control Project** also meets the needs of the **Arkansas Basin Implementation Plan (ArkBIP)** by addressing the identified non-consumptive goals and objectives in section 1.6.3 (pg. 17) of the plan. Specifically, this project will meet the following goals identified in the ArkBIP, section 1.6.3 (pg 18):

- 1) Maintain or improve riparian habitat and aquatic habitat, and restore riparian and aquatic habitat that would support environmental features and recreational opportunities.
- 2) Maintain, improve, or restore watersheds that could affect environmental and recreational resources.

Last Updated: June 2018

Water Project Overview

Please provide a summary of the proposed water project (200 words or less). Include a description of the project and what the CWP Grant funding will be used for specifically (e.g., studies, permitting process, construction). Provide a description of the water supply source to be utilized or the water body affected by the project, where applicable. Include details such as acres under irrigation, types of crops irrigated, number of residential and commercial taps, length of ditch improvements, length of pipe installed, and area of habitat improvements, where applicable. If this project addresses multiple purposes or spans multiple basins, please explain.

The Applicant shall also provide, in Exhibit A, a detailed Statement of Work, Budget, Other Funding Sources/Amounts and Schedule.

Increasing at 17% a year, outdoor recreation is booming in Chaffee County, bringing economic opportunity and quality of life to Colorado residents and visitors. The Envision Chaffee County Recreation in Balance program will develop community-driven solutions to manage the rapid expansion of recreational impacts on watershed health. This project is one branch of the program aimed at (1) reducing current and future sediment entering waterways and agricultural assets as a result of expanding recreational impacts, and (2) developing transferable tools to manage recreation-related sedimentation.

These grant funds will be used to hire EcoMetrics as technical experts to develop a risk rating system for evaluating the potential for dispersed camping and outdoor recreation sites to deliver anthropogenic sediment to waterways and aquatic habitat. They will then perform a systematic review of aerial imagery to create a spatial database of dispersed use sites rated by sedimentation risk. Sites of the greatest concern will be assessed in more detail using field methods to identify Rapid Response Pilot projects. The grant also allows EcoMetrics to collaborate with developers of the Recreation Impact Monitoring System to integrate sediment monitoring protocols and for Central Colorado Conservancy to implement remediation plans on multiple high-priority sites.

Measurable Results

To catalog measurable results achieved with the CWP Grant funds, please provide any of the following values as applicable:

	New Storage Created (acre-feet)
	New Annual Water Supplies Developed or Conserved (acre-feet), Consumptive or Nonconsumptive
	Existing Storage Preserved or Enhanced (acre-feet)
	Length of Stream Restored or Protected (linear feet)
	Efficiency Savings (indicate acre-feet/year OR dollars/year)
X	Area of Restored or Preserved Habitat (acres)
	Quantity of Water Shared through Alternative Transfer Mechanisms
	Number of Coloradans Impacted by Incorporating Water-Saving Actions into Land Use Planning
X	Number of Coloradans Impacted by Engagement Activity
X	Other Explain: New transferable tools that will help identify and manage recreation-related sediment generation state-wide

Last Updated: June 2018

	Private Individuals, Partnerships, and Sole Proprietors: Private parties may be eligible for funding.
X	Non-governmental organizations (NGO): Organization that is not part of the government and is non-profit in nature.
	Covered Entity: As defined in Section 37-60-126 Colorado Revised Statutes .

Type of Water Project (check all that apply)	
X	Study
	Construction
	Identified Projects and Processes (IPP)
	Other

Category of Water Project (check the primary category that applies and include relevant tasks)	
	Water Storage - Projects that facilitate the development of additional storage, artificial aquifer recharge, and dredging existing reservoirs to restore the reservoirs' full decreed capacity and Multi-beneficial projects and those projects identified in basin implementation plans to address the water supply and demand gap.. <i>Applicable Exhibit A Task(s):</i>
	Conservation and Land Use Planning - Activities and projects that implement long-term strategies for conservation, land use, and drought planning. <i>Applicable Exhibit A Task(s):</i>
	Engagement & Innovation - Activities and projects that support water education, outreach, and innovation efforts. Please fill out the Supplemental Application on the website. <i>Applicable Exhibit A Task(s):</i>
	Agricultural - Projects that provide technical assistance and improve agricultural efficiency. <i>Applicable Exhibit A Task(s):</i>
X	Environmental & Recreation - Projects that promote watershed health, environmental health, and recreation. <i>Applicable Exhibit A Task(s):</i>
	Other Explain:

Location of Water Project	
Please provide the general county and coordinates of the proposed project below in decimal degrees . The Applicant shall also provide, in Exhibit C, a site map if applicable.	
County/Countries	Chaffee County
Latitude	38.679 N
Longitude	106.093 W



Last Updated: June 2018

Applicant & Grantee Information	
Name of Grantee(s)	Central Colorado Conservancy
Mailing Address	PO Box 942, Salida Colorado 81201
FEIN	84-1594923
Organization Contact	Cindy Williams
Position/Title	Board Chair, Central Colorado Conservancy
Email	boardpresident@centralcoloradoconservancy.org
Phone	720-935-0094
Grant Management Contact	Andrew Mackie
Position/Title	Executive Director, Central Colorado Conservancy
Email	andrew@centralcoloradoconservancy.org
Phone	719 239 0281
Name of Applicant (if different than grantee)	
Mailing Address	
Position/Title	
Email	
Phone	
Description of Grantee/Applicant	
Provide a brief description of the grantee's organization (100 words or less).	
<p>Central Colorado Conservancy is a certified Land Trust, serving six counties with 2 full time and 3 part time professionals. The Conservancy protects over 15,000 acres and 22 miles of rivers and streams in perpetuity, has restored 5 miles of stream banks, and manages Envision Chaffee County - engaging over 1,500 citizens.</p> <p>EcoMetrics is a local firm of stream and riparian scientists specializing in the application of science in evaluating stream, riparian, and watershed health and function. They have analyzed watershed-scale sediment impacts using WARSSS on the South Platte Headwaters (South Park), North Fork South Platte watershed, Slate River, and Badger Creek.</p>	

Type of Eligible Entity (check one)	
<input type="checkbox"/>	Public (Government): Municipalities, enterprises, counties, and State of Colorado agencies. Federal agencies are encouraged to work with local entities. Federal agencies are eligible, but only if they can make a compelling case for why a local partner cannot be the grant recipient.
<input type="checkbox"/>	Public (Districts): Authorities, Title 32/special districts (conservancy, conservation, and irrigation districts), and water activity enterprises.
<input type="checkbox"/>	Private Incorporated: Mutual ditch companies, homeowners associations, corporations.

July 15, 2018

Nick Dellaca
Colorado Parks and Wildlife
State Trails Program
13787 U.S. Hwy 85N
Littleton, CO 80125

Letter of Support for Envision Chaffee County "Recreation in Balance" Proposal

Dear Mr. Dellaca,

The following Chaffee County municipalities and ancillary Boards support the Chaffee County Board of County Commissioners' application to the Colorado Parks and Wildlife, State Trails Program Colorado the Beautiful Grant for the **Envision Chaffee County "Recreation in Balance"** (RiB) Planning Proposal.

As municipal governments we aim to represent our constituents by keeping up with needs and services of our citizens and planning for the future ahead us. During this period of rapid growth in tourism, recreation and community development our respective municipalities and boards are grateful for this grant opportunity and the Envision "Recreation in Balance" Taskforce for coordinating this project. A vision for "Recreation in Balance" will be beneficial to us all, as it will centralize and summarize important data that has been collected through the help of many, many recreational Stakeholders. Public input is critical to all municipal decisions and we look forward to the outcomes which will then be incorporated into our regional planning efforts.

We pledge to represent our respective municipalities and Boards as collaborative Recreation in Balance stakeholders; to help collect data, help build a sustainable Recreation Impact Monitoring System, help make achievable recommendations for the future, and to incorporate Recreation in Balance products into future outdoor recreation planning.

Sincerely,



P.T. Wood, Mayor



Diana Porter, Salida Recreation Advisory Board

Duff Lacy, Mayor

Town of Poncha Springs
"The Crossroads of the Rockies"



Lois Walton, Buena Vista Trails Advisory Board

Ben Scanga, Mayor

- Connect to the broader Recreation in Balance program, helping to develop a transferable cellphone-based application that will enable user groups and local non-profit organizations to consistently collect data that will inform ongoing management activities – including reliable data on erosion and sediment generation.

The county fully supports this work, and also plans to incorporate the Recreation in Balance program recommendations and outcomes into the Chaffee County Comprehensive Plan update, scheduled for 2019-2020.

Chaffee County has an exceptional track record of delivering innovative programs that become models for other communities (for example the creation of the Arkansas Headwaters Recreation Area and the Arkansas River Voluntary Flow Management Program). We think the Recreation in Balance – Sediment Control Program provides another opportunity to develop new innovative tools and approaches to address not only local issues, but also to provide a model for the many communities facing similar challenges across Colorado. We strongly encourage Colorado Water Conservation Board support for this innovative and impactful proposal.

Sincerely,

CHAFFEE COUNTY BOARD OF COMMISSIONERS



Greg Felt



Keith Baker



Rusty Granzella



Chaffee County Board of Commissioners

P.O. Box 699/104 Crestone Ave.
Salida, CO 81201

719.539.2218/www.chaffeecounty.org

January 22, 2019

Chris Sturm
Environmental and Recreation Projects
Colorado Water Conservation Board
(Chris.Sturm@co.state.us)

The Chaffee County Board of Commissioners fully supports the Envision Chaffee County Recreation in Balance – Sediment Control grant application and are providing a cash contribution supporting the overall Envision Recreation in Balance program. The Recreation in Balance program was developed through Envision Chaffee County, a community visioning and planning program that engaged more than 1,500 residents and 72 non-profit organizations, businesses and agencies. The program is a top priority of community members, who see sustainable recreation as not only a critical economic driver, but also as an essential community asset that people move here and live here to enjoy.

Recreation use in Chaffee County is growing by an estimated 17% per year. The rapid growth is having increasing impacts on watershed health. In one area of the county, the footprint of dispersed campsites has grown by 100% in 10 years. Citizens express concern about the increasing footprint of denuded areas, human waste, trash and increasing erosion and sediment entering local waterways. Local agricultural operators are also concerned about increasing impacts to their operations (the 5th largest economic driver in the county) due to de-vegetation, sediment entering irrigation structures and other conflicts.

The Recreation in Balance – Sediment Control Program grant funding would provide urgently needed technical resources and on the ground actions to:

- Rapidly identify areas where recreation activities are causing erosion and delivering sediment (and perhaps human waste, waste oils etc.) into local aquatic habitats, water storage facilities and agricultural irrigation infrastructure,
- Develop treatment plans to address top issue areas,
- Provide on the ground remediation of top issue areas – working with generous in-kind contributions from local volunteers and agencies including the Arkansas Headwaters Recreation Areas, and



Dominique Naccarato,
Executive Director

D. Naccarato



Andrew Mackie,
Executive Director

Andrew Mackie



Andrew Koransky, President

Andrew Koransky



Donna Rhoads, President

Donna Rhoads



Nicole Blaser, Regional Director

Nicole Blaser



Alan Robinson,
Chapter Leader

Alan Robinson



Julie Mach,
Conservation Director

Julie Mach



Chad Hixon, President
Central Colorado Mountain Riders

Chad Hixon

Mal Sillars, Chapter Leader
Upper Arkansas Wilderness Volunteers

Mal Sillars

Linda Gibas, Friends of Browns Canyon
Board Member/Equestrian

Linda Gibas



Keith Krebs, Board Member
Collegiate Peaks Chapter-TU

Keith Krebs

The Envision RiB program provides a unique opportunity to build on the strong momentum generated by the Envision Chaffee County process. It will tap extensive community interest, skills, relationships and expertise of agency staff, non-profit organizations, businesses and recreational users to develop a **Recreational Asset Atlas** and a sustainable **Recreation Impact Monitoring System**, providing data on all the major recreational assets in Chaffee County. Data will integrate into a **Balanced Recreation Plan** that considers the immediate and future needs of diverse users, healthy wildlife and watersheds. These products, developed collaboratively by nonprofit organizations, businesses and citizens, will provide critical input to guide regional agency and county management plans, catalyzing alignment of community organizations and volunteers to support sustainable recreation.

The program offers extensive community in-kind support. Nonprofit organizations are already committed to serving with citizens and agency representatives on a "Recreation in Balance" Taskforce designed to enable and connect the Envision Recreation in Balance Program. These leaders will donate an estimated 1,800 hours of in-kind professional services over the project duration, for an estimated in-kind contribution of \$91,800. At least 30 additional local user groups and non-profit organizations will also provide volunteer hours to develop baseline data for the Recreation Impact Monitoring System, with volunteer resources estimated at 1,680 hours or \$40,555.

Chaffee County is a unique community with citizens and organizations that care deeply about watershed health, economy and great user experiences. Together, we will create a model for monitoring impacts and proactively planning for the future of recreation that we want to see here and throughout Colorado and the West.

Obtaining funding to support design, development and pilot testing is a critical first step in making this vision of sustainable outdoor recreation management a reality, and we appreciate your consideration of this project.

The following organizations and individuals support the Chaffee County Board of Commissioners application to the Colorado Parks and Wildlife, State Trails Program for the *Envision "Recreation in Balance"* (RiB) Planning Grant. The organizations have agreed to provide varying levels of in-kind technical support and volunteer hours as critical "Recreation in Balance" Stakeholders.

Sincerely,

Cindy Williams, Envision Chaffee County Co-lead



July 19, 2018

Nick Dellaca
Colorado Parks and Wildlife
State Trails Program
13787 U.S. Hwy 85N
Littleton, CO 80125

Letter of Support for Envision "Recreation in Balance"

Dear Mr. Dellaca

Nonprofit conservation organizations and local user groups strongly support balancing conservation and trails/access development with funding from the Colorado the Beautiful grant for the Envision Chaffee County Recreation in Balance (RiB) Program. We understand that sustainable outdoor recreation growth is essential for local economic health; with 33% of local economic product directly related to tourism. We also see the growing impacts of outdoor recreation, hear increasing community concern about those impacts, and understand that immediate and active management of impacts to wildlife, water quality and watershed health are essential to support sustainable outdoor recreation.

In one Envision Chaffee County survey of 1,200 Chaffee County citizens, respondents expressed preference for management of recreation impacts three time more frequently than a desire for increased access or trails. In a 2018 follow-up survey of 82 local raft guides, 83% of respondents indicated concerns about the presence of trash both in dispersed campsites and along the river. Another 40% expressed concern about dispersed campsites, including expanding areas of overuse, increasing numbers of fire rings, and impacts due to soil compaction and erosion. Impacts to wildlife were of concern to 33% of respondents. Last, 22% of respondents cited concerns related to improper disposal of human waste. A third Envision survey of local ranch owners identified increasing conflicts between traditional public land users and recreational users, with agricultural operators concerned that impacts could affect the viability of local ranchlands.

While the community is expressing concern, limited baseline data is available to document impacts of recreation and encourage proactive management. The Friends of Fourmile, a chapter of GARNA, which has monitored campsite development in the jointly managed, 100,000 acre, multi-use Fourmile Area, provided one useful data set for Envision. Their monitoring documented a 120% increase in the footprint of dispersed campsites over the past 12 years. While some campsites are appropriate, photographic evidence documents many cases of illegal road development, damage to wetland and riparian areas and de-vegetation of steep slopes and drainages that greatly increases potential for erosion and sediment delivery into aquatic habitats.

manage recreational impacts. Further, there is typically lack of community agreement on what constitutes acceptable impact of effective solutions. Finally, there appears to be a lack of recognition in the outdoor recreation industry of the environmental impacts, focusing solely on the positive economic impacts outdoor recreation brings.

The projects and momentum generated with Envision Chaffee Projects provide a unique occasion to create lasting and exportable solutions to these challenges through facilitated community engagement and an exciting level of skilled in-kind time from experts in many fields – providing more than a 1 to 1 match to requested grant funds. The amazing level of citizen engagement and leadership in Chaffee County make this an exceptional opportunity and will be strongly supported by agency staff.


The BLM and USFS plan to extensively support the program. We will provide cash donation of \$4,000 per organization. We will also provide meeting venues and the skilled time of senior staff members including:

- Ben Lara – USFS, PSICC Recreation Program Manager,
- Kalem Lenard – BLM, Assistant Field Manager, Royal Gorge Field Office and
- Linda Skinner—BLM, Recreation Planner, Royal Gorge Field Office

This group will donate an estimated 750 staff hours of the 2.5 year program, an in-kind service of roughly \$48,750. The agencies will also work to ensure that program results are connected and have impact beyond Chaffee County. We have already shared the program with agency leadership based regionally and nationally, and continue to ensure that lessons learned, new tools and community approaches are captured and shared with offices across our agencies. For example, program results hope to be immediately incorporated into a USFS, PSICC's Forest Management Plan Revision and may also impact the in-progress BLM Resource Management Plan update. We will also be looking for ways to connect trails and new systems to adjacent counties and forests.

Agency staff have been involved with the Envision Process from the inception, and clearly see the value of programs like Envision Recreation in Balance. We will strongly support this program's success and spread program systems and approaches across agencies. Funding for the program is a critical support, and we strongly endorse funding this grant application.

Sincerely,

Acting for 
Keith E. Berger
Field Manager
Royal Gorge Field Office