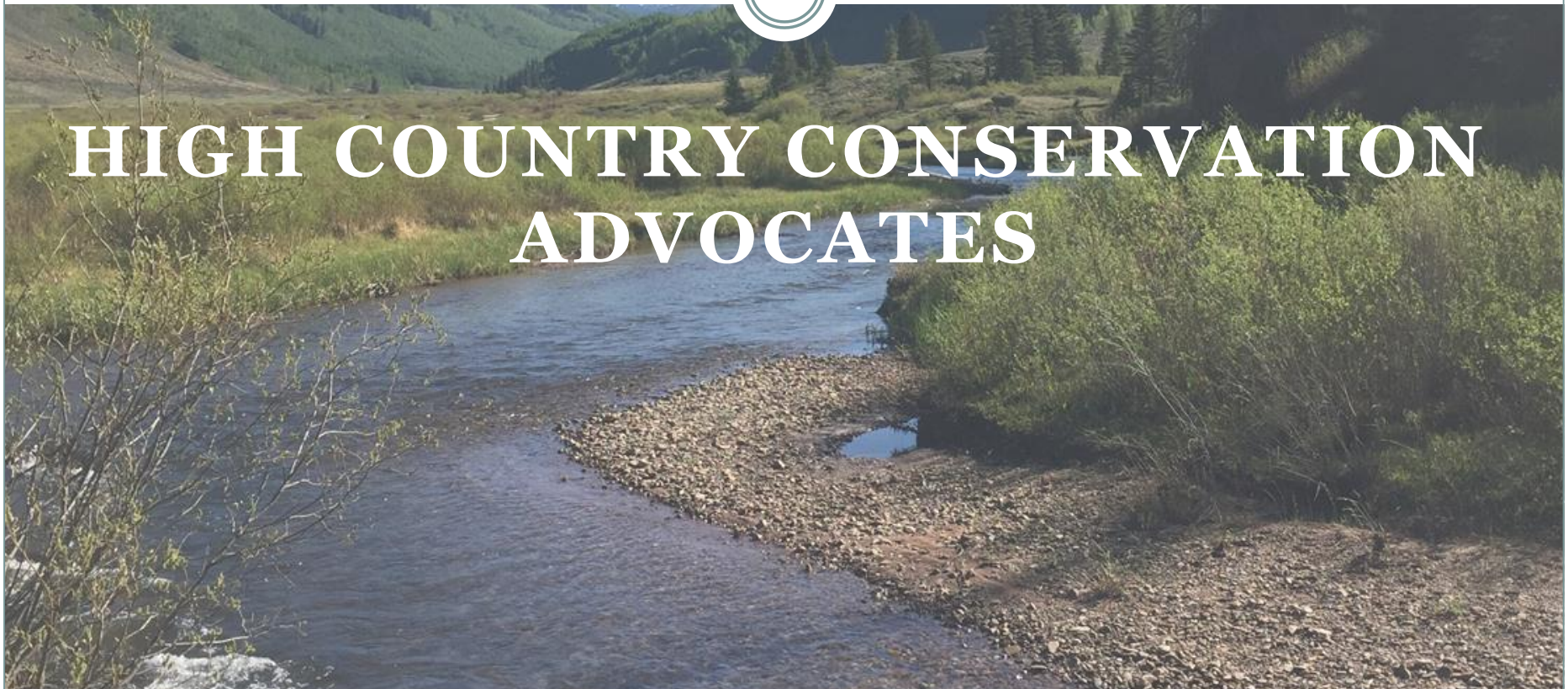


2019 Instream Flow Proposals



**HIGH COUNTRY CONSERVATION
ADVOCATES**





Water Division 4

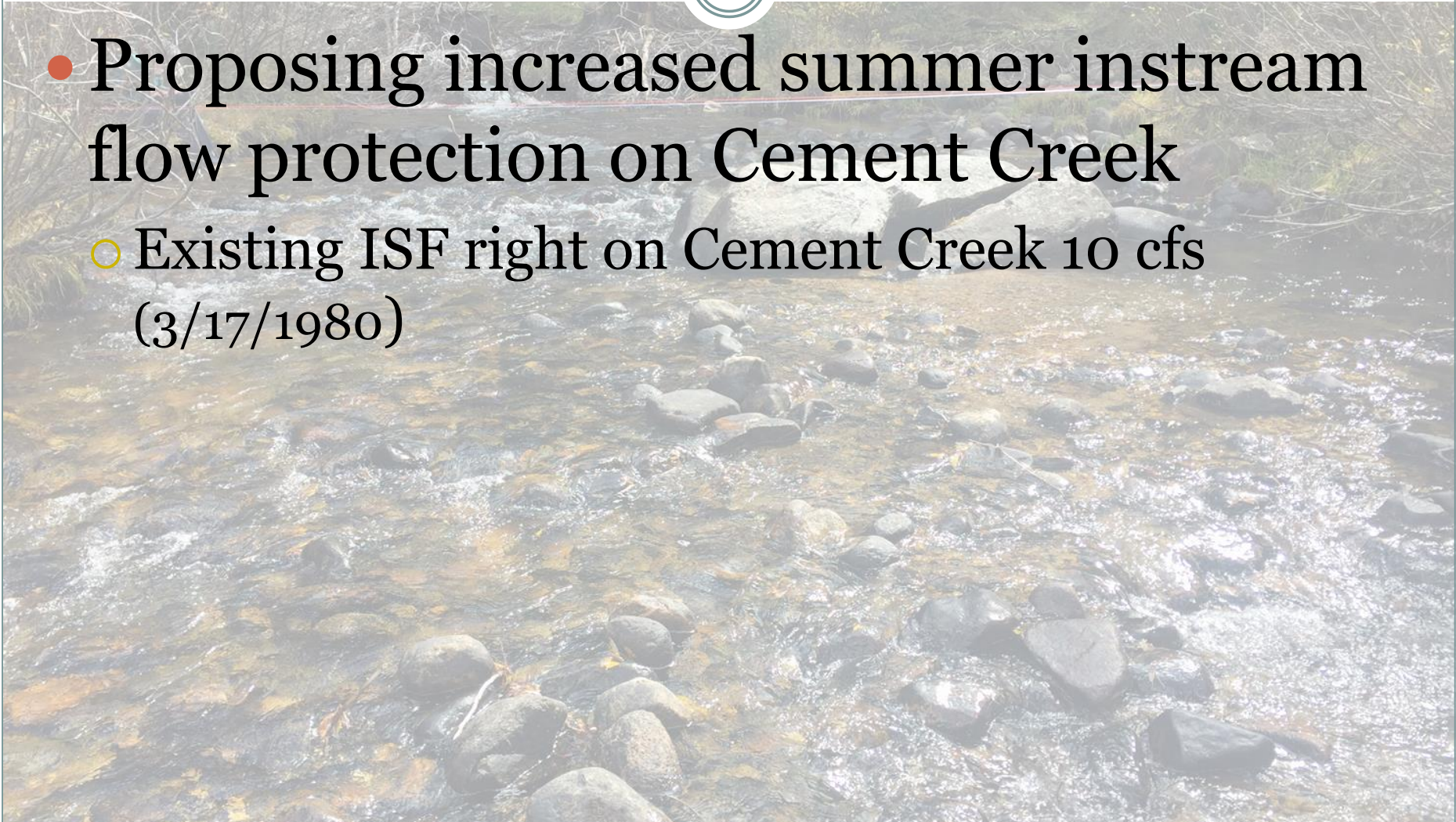
Cement Creek



Instream Flow Rights



- Proposing increased summer instream flow protection on Cement Creek
 - Existing ISF right on Cement Creek 10 cfs (3/17/1980)





Natural Environment

Fishery (brook & brown trout; a few Colorado River Cutthroat)

Healthy riparian area featuring mixed forest, alders, and willows

Several irrigated hay meadows



Current R2CROSS Criteria

Hydraulic Criteria

- 1 ft./sec Average Velocity
- 50% Wetted Perimeter
- Average Depth

Flow Recommendations

- Flow recommendations meet 3 of 3 hydraulic criteria





Proposed ISFs



Cross Section (Date)	Winter Flow Recommendation (cfs)	Summer Flow Recommendation (cfs)
Upper Cement Creek (9-26-18)	(no change to existing ISF right)	12.10
Lower Cement Creek (10-5-18)	(no change to existing ISF right)	13.01
Preliminary Cement Creek ISF Recommendations (average of two cross sections)	10 cfs (no change to existing ISF right)	13 (April 15- Sept 30)

Water Availability



Physical

- Used a combination of StreamStats and R2Cross to look at physical availability

Water Availability

Legal

- Small springs on upper Cement Creek
- Small irrigation diversions on middle Cement Creek
- Significant diversions near the Cement Creek confluence with the East River

Larger rights include:

Cement Creek Ditch (WDID 5900537)

6.5 cfs (6/1/1886)

19.5 cfs (6/1/1886)

Jones Highline Ditch (WDID 5900605)

1.3 cfs (4/21/1941)

4 cfs (6/1/1894)

Yarnell Ditch (WDID 5900712)

6.5 cfs (5/30/1959)



Stakeholders

**US Forest
Service**

**Colorado Parks &
Wildlife**

Gunnison County

**Water rights
owners**

**The Upper
Gunnison River
Water
Conservancy
District**

Instream Flow Reach	Upper Terminus	Lower Terminus	Total Length (miles)	Land Ownership	
				Private (%)	Public (%)
Cement Creek	Headwaters	East River	17.4	Riparian Corridor 20%	Riparian Corridor 80% USFS
	Lat 38 58 10N long 106 46 19W	Lat 38 48 12N long 106 52 46W		Watershed Composition 5%	Watershed Composition 95% USFS, CPW, BLM



Water Division 4

Spring Creek



Instream Flow Rights



- Proposing to define two segments on Spring Creek below Rocky Brook
 - Upper Spring Creek: Rocky Brook to Bear Creek (3.0 miles)
 - Lower Spring Creek: Bear Creek to Taylor River (8.3 miles)
- Proposing increased summer flows on Upper Spring Creek & increased winter and summer instream flows on Lower Spring Creek
 - Existing ISF right on Spring Creek (7.5 cfs 3/17/1980)



Upper Spring Creek



Lower Spring Creek



Natural Environment

Fishery (healthy brown trout and rainbow trout)

Healthy riparian area featuring riffles, small pools, and beaver ponds

Several irrigated hay meadows





Proposed ISFs

Cross Section (Date & Location)	Measured Discharge (cfs)	Bankfull Top Width ¹ (ft)	Winter Flow Recommendation (cfs)	Summer Flow Recommendation (cfs)
Upper Spring Creek (9/28/18)	6.30	26.5	7.5 (no proposed change to existing ISF)	14 (April 15- Sept 30)
Lower Spring Creek (9/28/18)	22.07	42.0	14 (Oct 1- April 14)	21 (April 15- Sept 30)

Water Availability



Physical

- Used a combination of StreamStats and R2Cross to look at physical availability

Water Availability

Legal

- Small springs on upper Spring Creek
- A few small diversions and several significant diversions near the confluence with the Taylor River

ELMER NO 2 DITCH (5900714)

5/10/1915 (1.8750 cfs)

3/28/1932 (2 cfs)

5/10/1915 (2.225 cfs)

SPRING CR IRG DITCH (5900679)

Rights on the Spring Creek Ditch
total 73.2 cfs.

9/14/1906 10cfs

12/18/1933 33.2 cfs

12/31/2007 30 cfs



Stakeholders

**US Forest
Service**

**Colorado Parks &
Wildlife**

Gunnison County

**Water rights
owners**

**The Upper
Gunnison River
Water
Conservancy
District**

Instream Flow Reach	Upper Terminus	Lower Terminus	Total Length (miles)	Land Ownership	
				Private (%)	Public (%)
Spring Creek (Appropriat ion Date 5/4/1984)	Confluence of Rocky Brook and Spring Creek	Confluence of Taylor River and Spring Creek	11.3	Riparian Corridor 16%	Riparian Corridor 84% USFS
				Watershed Composition 7%	Watershed Composition 93% USFS
Upper Spring Creek	Confluence of Rocky Brook and Spring Creek	Confluence of Bear Creek and Spring Creek	3.0	Riparian Corridor 1%	Riparian Corridor 99% USFS
				Watershed Composition 1%	Watershed Composition 99% USFS
Lower Spring Creek	Confluence of Bear Creek and Spring Creek	Confluence of Taylor River and Spring Creek ¹	8.3	Riparian Corridor 22%	Riparian Corridor 78% USFS
				Watershed Composition 7%	Watershed Composition 93% USFS

Questions?



Julie Nania
Julie@hccacb.org

