

2019 BLM Instream Flow Recommendations



Iowa Gulch near Leadville

Streams in Water Division 2



Arkansas
River

East Fork Arkansas River

Lake County



East Fork Arkansas River Location



Climax
Mine

Lower Terminus:
Confluence With
Chalk Creek

Upper Terminus:
Headwaters

Leadville

Google Earth

East Fork Arkansas River



Natural Environment:

Fishery:

- Brook trout

Water Quality:

- Consistently cold stream temperatures
- Ideal pH for salmonids
- Low TDS
- Some heavy metals from historic mining

Riparian community:

- Spruce, willow, river birch



East Fork Arkansas River

Proposed Flow Rates:

7.0 cfs May 1 – Jul 31

2.8 cfs Aug 1 – Sep 30

1.2 cfs Oct 1 – Apr 30



East Fork Arkansas River



Water Availability:

- Snowmelt hydrograph
- At top of watershed
- Existing ISF right located downstream, starting at Chalk Creek -- 15 cfs, year round
- Gage data available downstream

Water Rights:

- None

East Fork Arkansas River



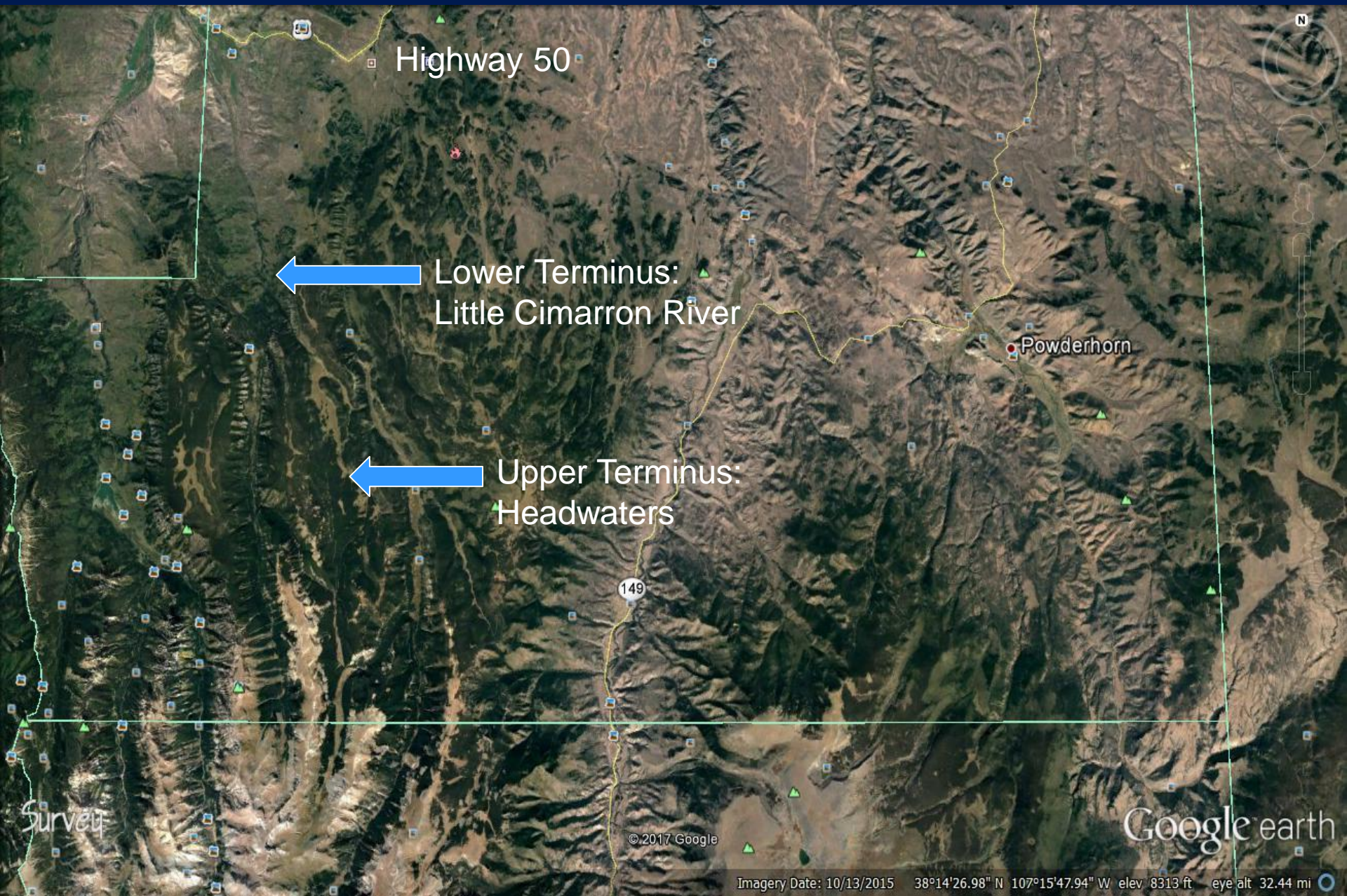
Stakeholders:

- Upper Arkansas Water Conservancy District
- Lake County
- Private land owners along reach
- US Forest Service
- Climax Molybdenum Mine

Iowa Gulch Lake County



Iowa Gulch Location



Iowa Gulch



Leadville

Lower Terminus:
Iowa Gulch Intake

Upper Terminus:
Headwaters

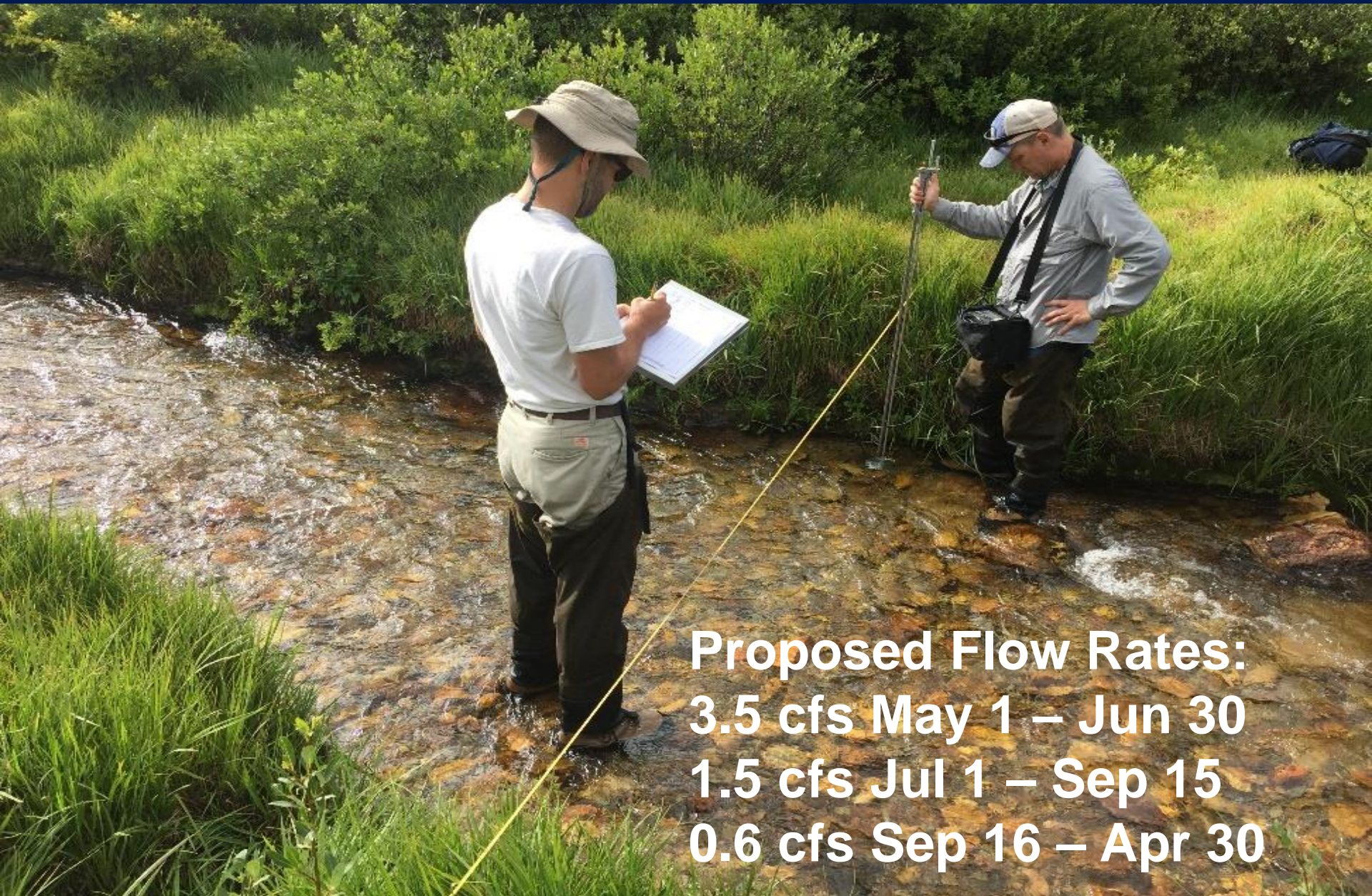
Iowa Gulch



Natural Environment:

- Fishery: brook trout
- Macros: mayfly
- Riparian community: willow, grasses, sedges

Iowa Gulch



Proposed Flow Rates:
3.5 cfs May 1 – Jun 30
1.5 cfs Jul 1 – Sep 15
0.6 cfs Sep 16 – Apr 30

Iowa Gulch



Water Availability:

- Snowmelt driven
- At top of watershed
- Gage data is not available

Water Rights:

- None

Water Quality:

- Some influence from historic mining

Iowa Gulch



Stakeholders:

- Private landowners along creek
- Lake County
- US Forest Service

Streams in Water Division 6



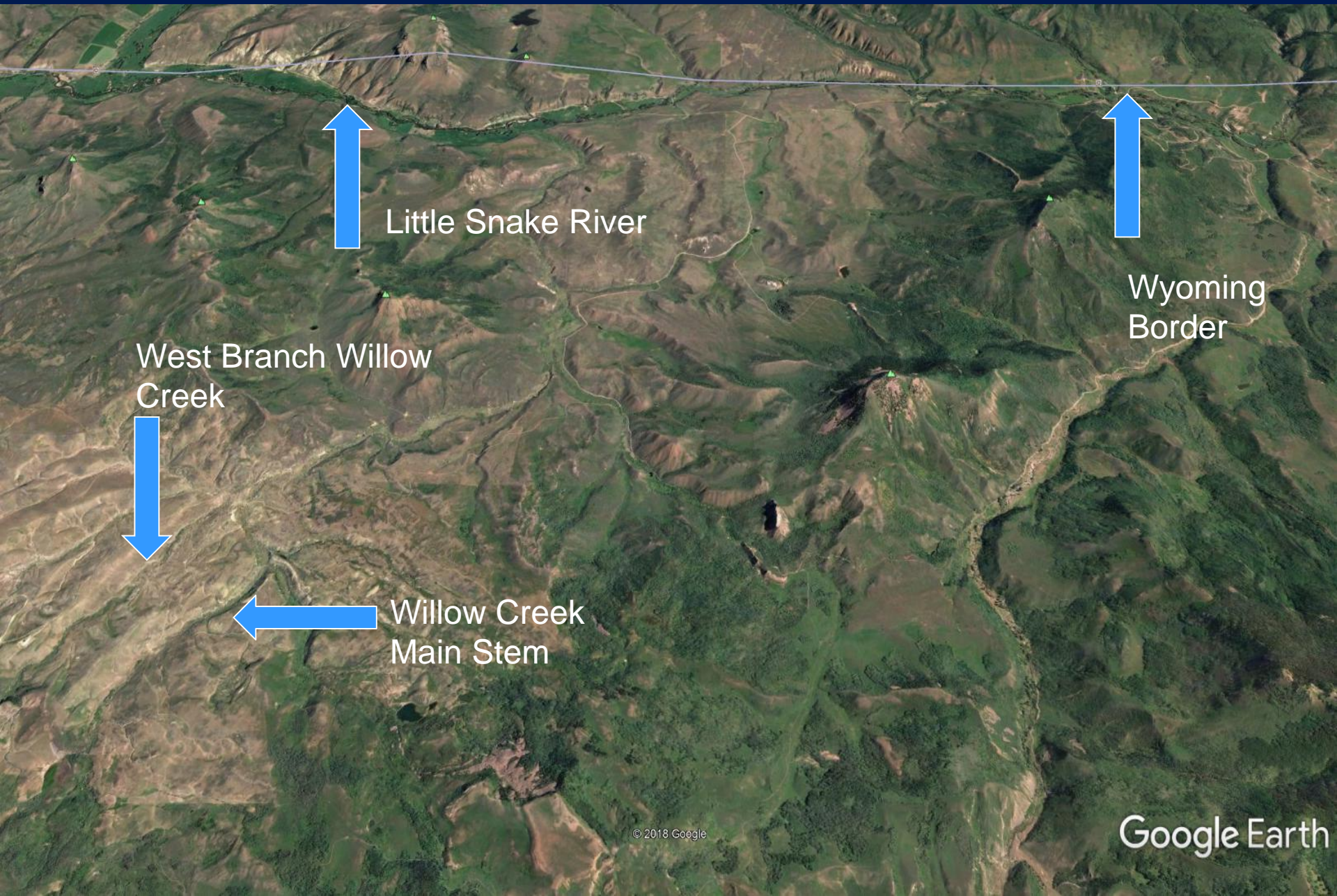
Yampa River near Maybell

Willow Creek

Routt County



Willow Creek Location



Little Snake River

Wyoming
Border

West Branch Willow
Creek

Willow Creek
Main Stem

Willow Creek



Natural Environment:

- Fishery: speckled dace, mountain sucker, creek chub, fathead minnow
- Macros: mayfly, caddisfly and other species typical of cool to warm water
- Riparian community: alder, willow, sedges, rushes

Willow Creek

Proposed Flow Rates:

Main Stem

1.05 cfs Apr 1 -- Oct 31
0.7 cfs Nov 1 – Mar 31

West Branch

0.65 cfs Apr 1 – Oct 31
0.45 cfs Nov 1 – Mar 31

Willow Creek



Water Availability:

- In headwaters of watershed
- Snowmelt driven hydrograph
- No gage date available
- Main stem can be affected by diversions, return flows

Water Rights:

- Main stem:
 - Pine Scope Ditch 1 - 5.0 cfs
 - Pine Scope Ditch 2 - 3.0 cfs
- West Branch: None

Willow Creek



Stakeholders:

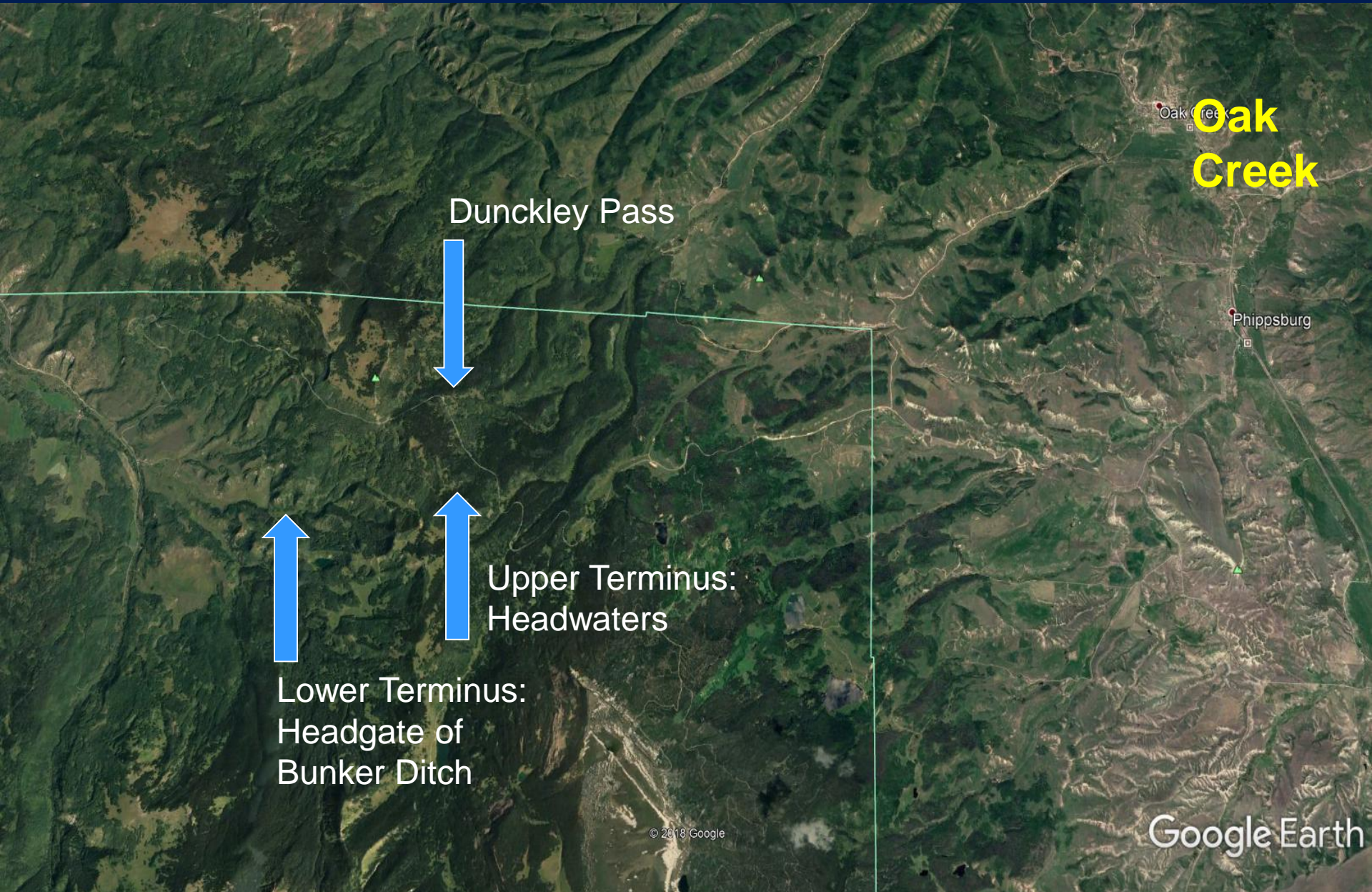
- Routt County
- Three Forks Ranch
– lands owned by the ranch surround the BLM parcels

Sunbutter Creek

Rio Blanco County



Sunbutter Creek Location



Sunbutter Creek



Natural Environment:

- Fishery: Colorado River Cutthroat Trout – genetic testing underway
- Macros: stonefly and caddisfly
- Riparian Community: alder, maple, spruce dogwood

Sunbutter Creek



Proposed Flow Rates:
1.75 cfs May 1 – Jul 1
0.7 cfs Aug 1 – Nov 30
0.4 cfs Dec 1 – Apr 30

Sunbutter Creek



Water Availability:

- Snowmelt driven
- Reliable base flow provided by spring discharge
- Gage data not available
- Downstream diversion data available

Water Rights:

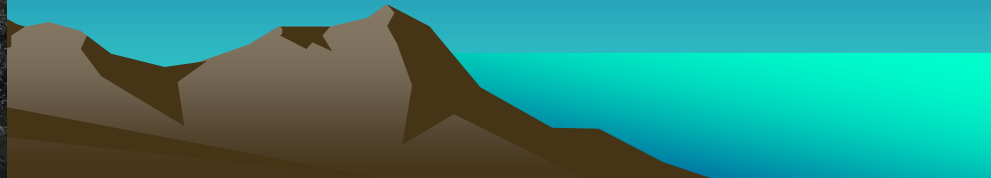
- None

Sunbutter Creek



Stakeholders:

- Rio Blanco County
- U.S. Forest Service
- Cross Mountain Ranch – owns lands at end of reach



Questions for BLM?

Contact Roy Smith at r20smith@blm.gov or 303-239-3940



Big Dominguez Creek
near Grand Junction