

Deep Creek Wild & Scenic River Designation



Looking NW from the Overlook



Looking SE from climbing area

Deep Creek WSR Suitability Study Corridor April 21, 2015

Segment 1
(Scenic)

Segment 2a
(Wild)

BLM Segment 3
(Recreation)

BLM Segment 2b
(Wild)

Legend

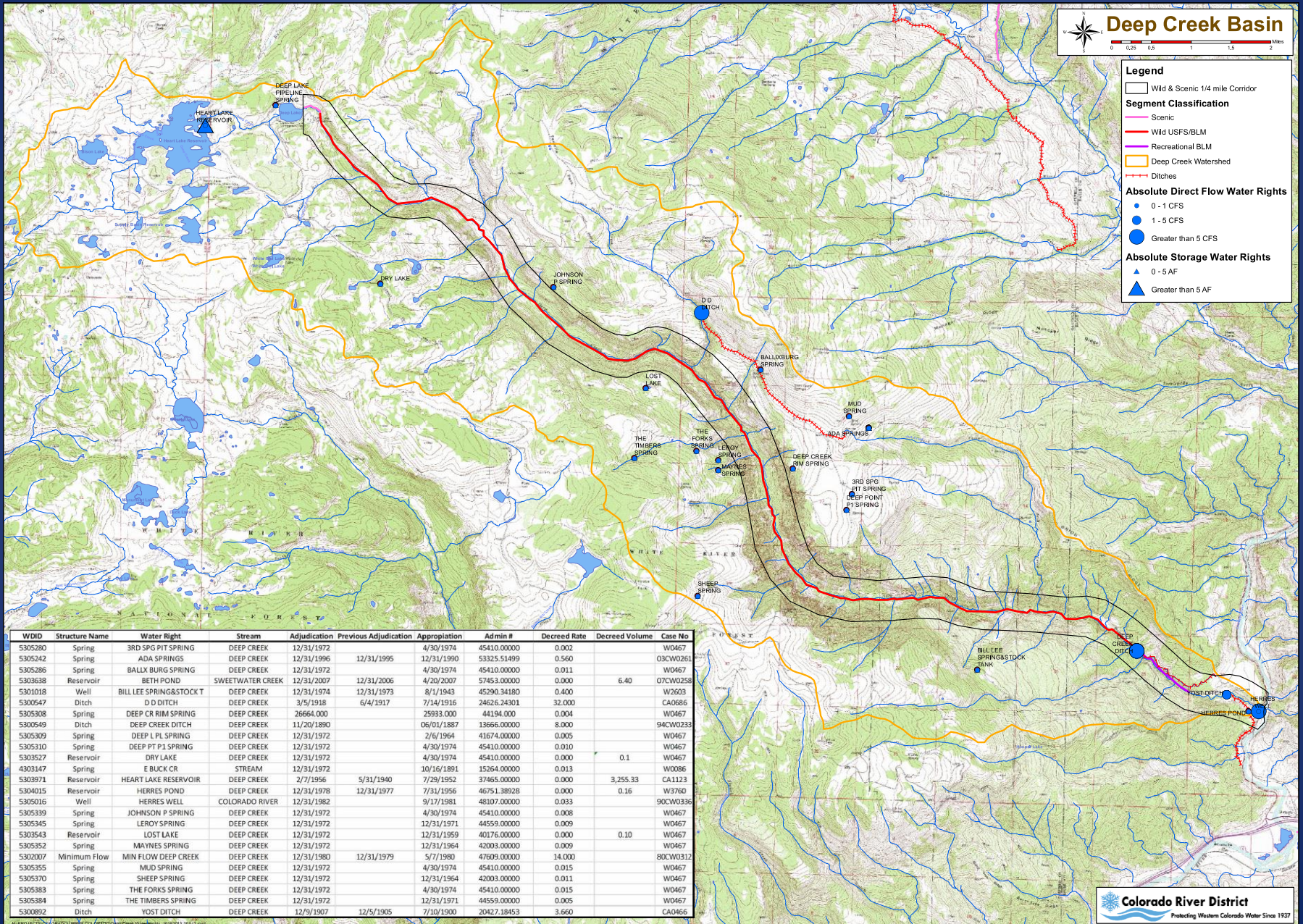
- USFS WSR Study Segment
- BLM WSR Study Segment
- Wild and Scenic River Boundary
- Forest Service
- Wilderness
- BLM
- Private
- State

USFS Deep Creek- Segments 1 and 2a
Total Suitable Length - 10.8 miles
Total Study Corridor - 5,040 acres

BLM Deep Creek Segment 2b and 3
Total Suitable Length - 4.5 miles
Total Study Corridor - 4,830 acres

The USFS Forest Service makes no warranty, expressed or implied, including the warranties of merchantability and fitness for a particular purpose, nor assumes any legal liability or responsibility for the accuracy, reliability, completeness or utility of these geospatial data, or for the improper or incorrect use of these geospatial data. These geospatial data and related maps or graphics are not legal documents and are not intended to be used as such. The data and maps may not be used to determine title, ownership, legal descriptions or boundaries, legal jurisdiction, or restrictions that may be in place on either public or private land. Natural hazards may or may not be depicted on the data and maps and land users should exercise due caution. The data are dynamic and may change over time. The user is responsible to verify the limitations of the geospatial data and to use the data accordingly.

Deep Creek Water Rights



Characteristics of Deep Creek



Outstandingly
remarkable values
(ORV's):

- Scenic
- Geologic
- Ecologic

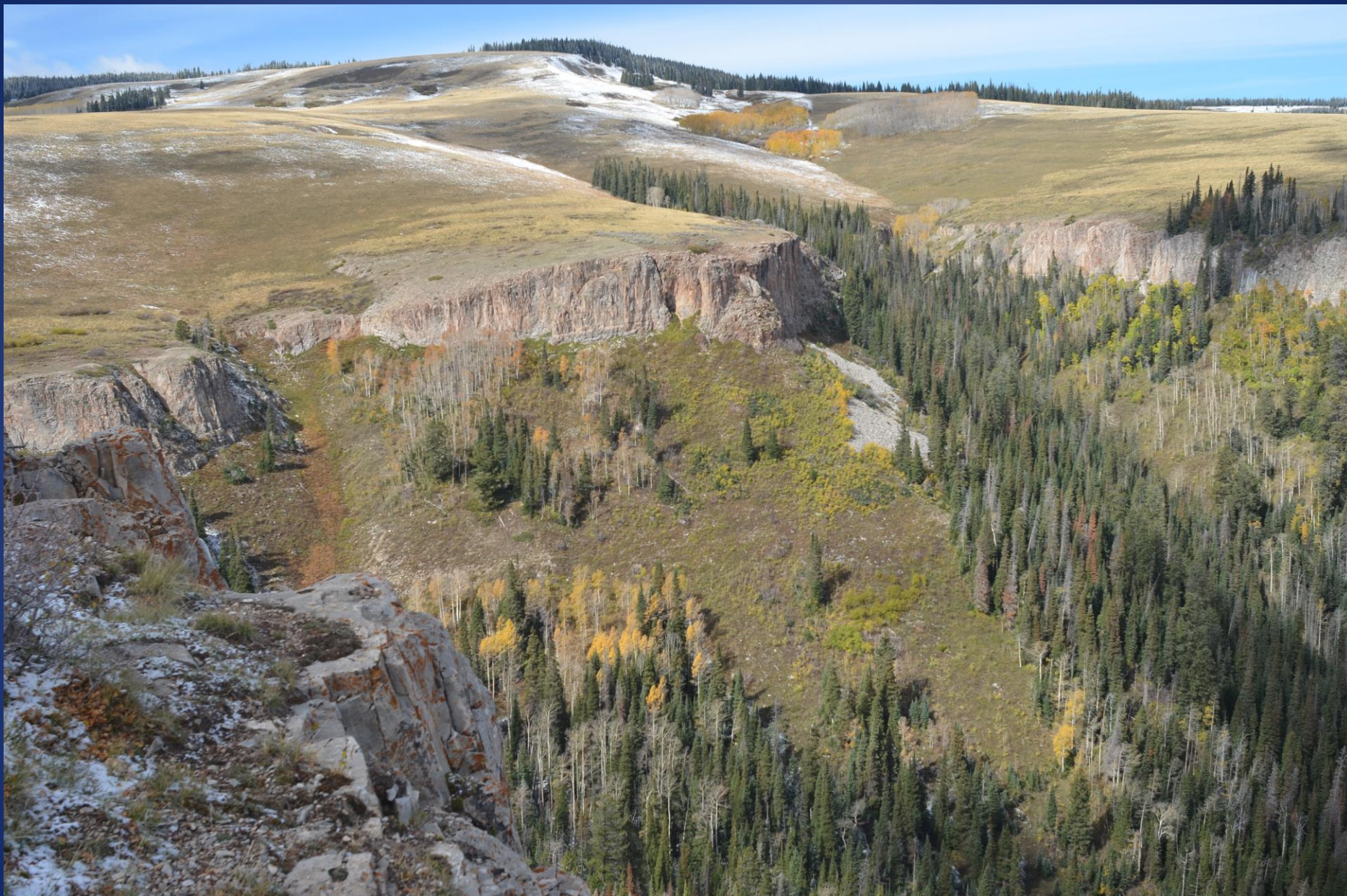
State held ISF Right
vs Federal Reserve
Right

How is a Wild and Scenic River different from a Wilderness Area?

- Wilderness areas preserve landscapes in completely undeveloped condition, but W&SR can have flexibility to allow development that is compatible with river-related values.
- Wilderness areas typically cover large landscapes, but a W&SR typically covers only a stream and its immediately adjacent lands.
- Wilderness areas typically focus on management by a single agency, but the Wild and Scenic Rivers Act requires collaborative planning with all stakeholders interested in a river corridor.

Stakeholder Process

- Grazers and Private Property Owners
- HAATS (High Altitude Aviation Training Site)
- Cavers
- Climbers
- Hunters
- Hikers
- Fisherfolk
- Campers
- NGO's
- Local Governments
 - Municipalities
 - Counties
 - State Agencies (CWCB, CPW, DMVA)
- Federal Agencies – USFS, BLM



Looking West at Overlook



Top of the canyon at Deep Lake















Questions?

