

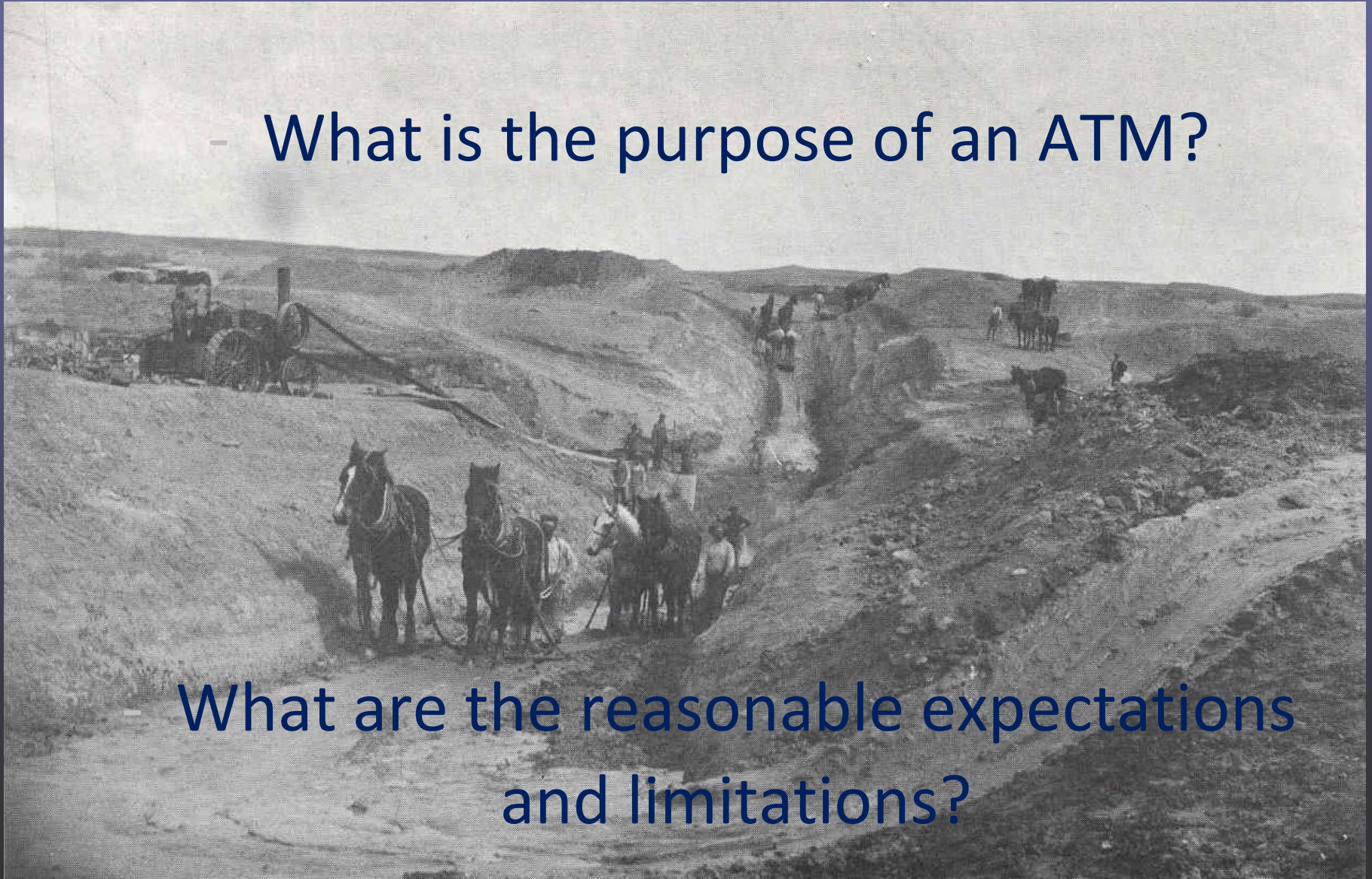
Aurora Water Alternative Transfer Methods Arkansas Basin



Gerald Knapp
Aurora Water
November 29, 2016

Building and Implementing an ATM

- What is the purpose of an ATM?



- What are the reasonable expectations and limitations?

Aurora's Experience in the Arkansas Valley

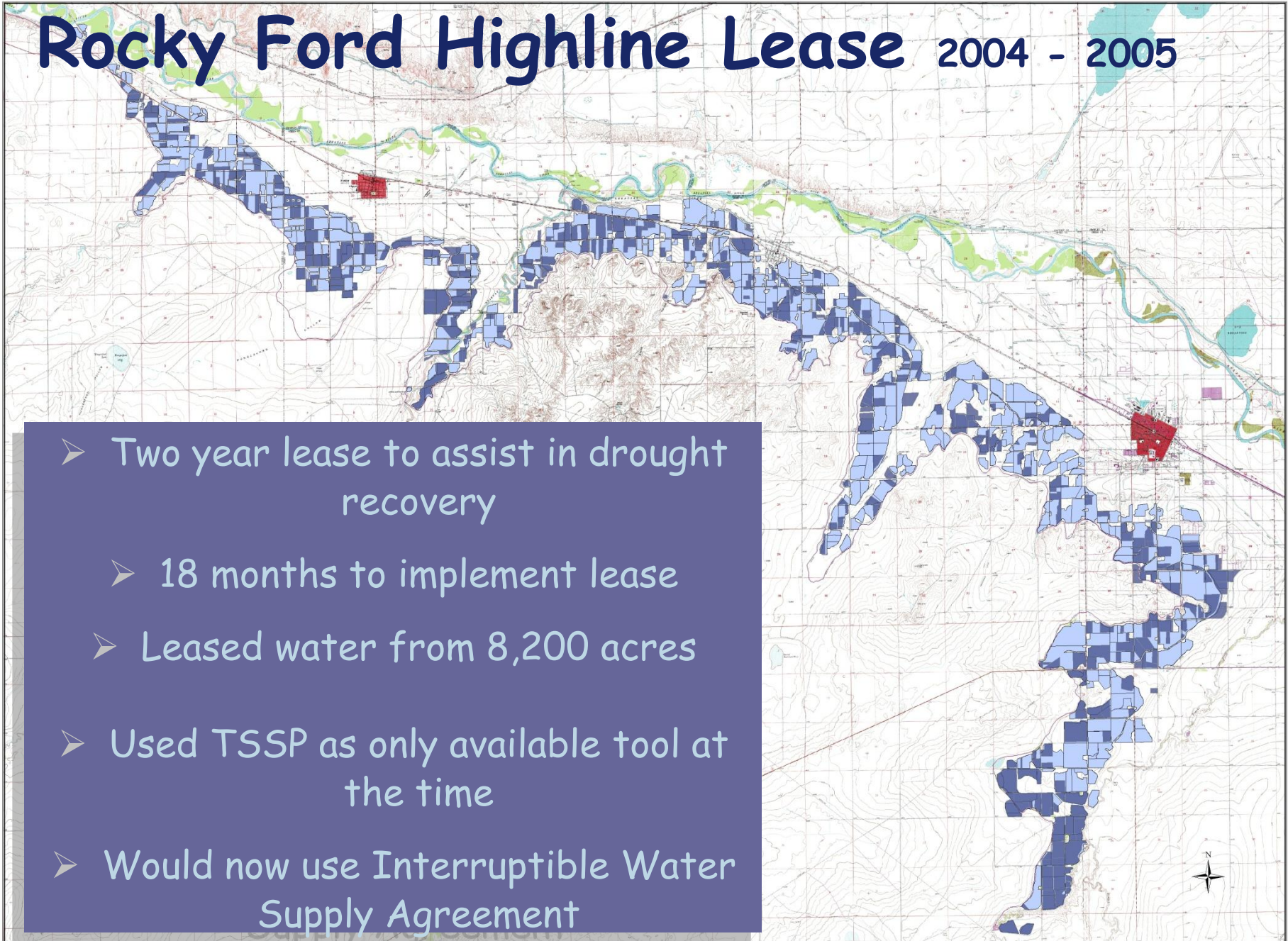


- Two examples of ATMs Aurora implemented in Arkansas Valley-
 - Intermittent leasing (and fallowing)
 - Water Sharing concept

Each aimed at meeting a specific need

Rocky Ford Highline Lease 2004 - 2005

- Two year lease to assist in drought recovery
 - 18 months to implement lease
 - Leased water from 8,200 acres
- Used TSSP as only available tool at the time
- Would now use Interruptible Water Supply Agreement



Implementing a Temporary Lease

- Engineering similar to a permanent transfer
- Contracts with Individual farmers/shareholders and also Ditch Company
- Infrastructure to administer temporary lease.
- Ability to provide historic return flows
- Storage and Transport of water for Municipal use.



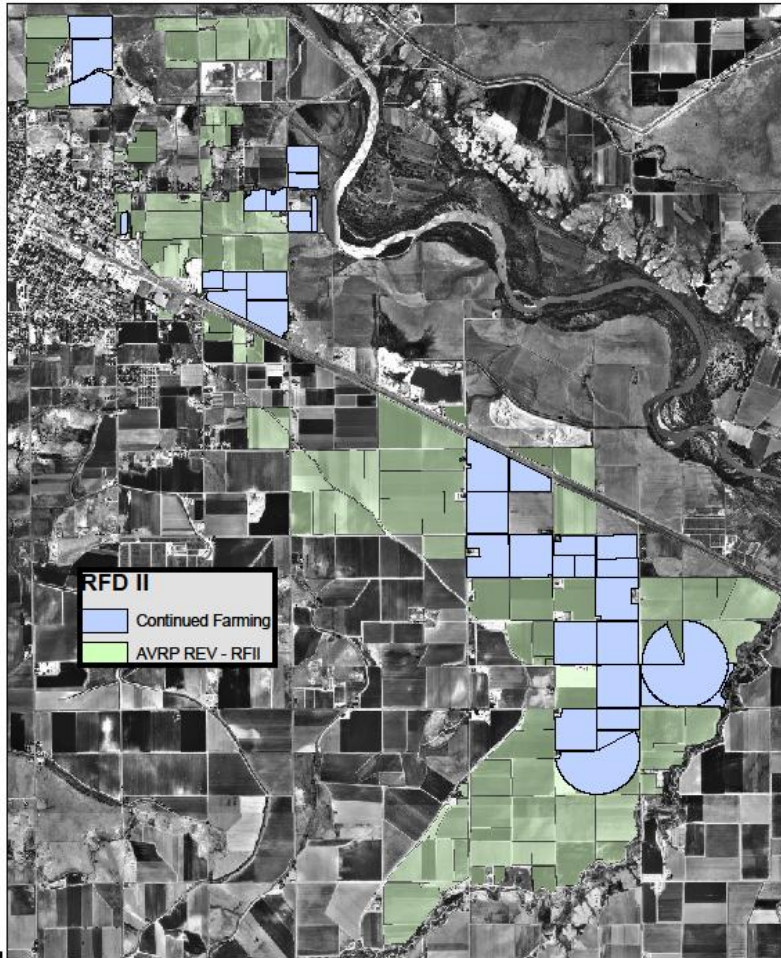
Rocky Ford Continued Farming Program



- Aurora's Rocky Ford Ditch transfer illustrates a water sharing concept.
- City sought a way in which agricultural production could be maintained on lands from which water was purchased.
- Goal to minimize negative impacts.

Rocky Ford Continued Farming Program

Rocky Ford Ditch II - Continued Farming Project



Arkansas Valley Range Project mapping.

- 880 acres from which water was purchased are included.
- City provides a portion of water back to augment depletions.
- City provided \$1,400/acre to install highly efficient irrigation systems; drip and sprinkler

Implementing the Continued Farming Program



- Farmer must be able to use a well as alternative water supply.
- Farmer needs to be able to change cropping to less consumptive crops.

Benefits to Multiple Parties from the Continued Farming Program



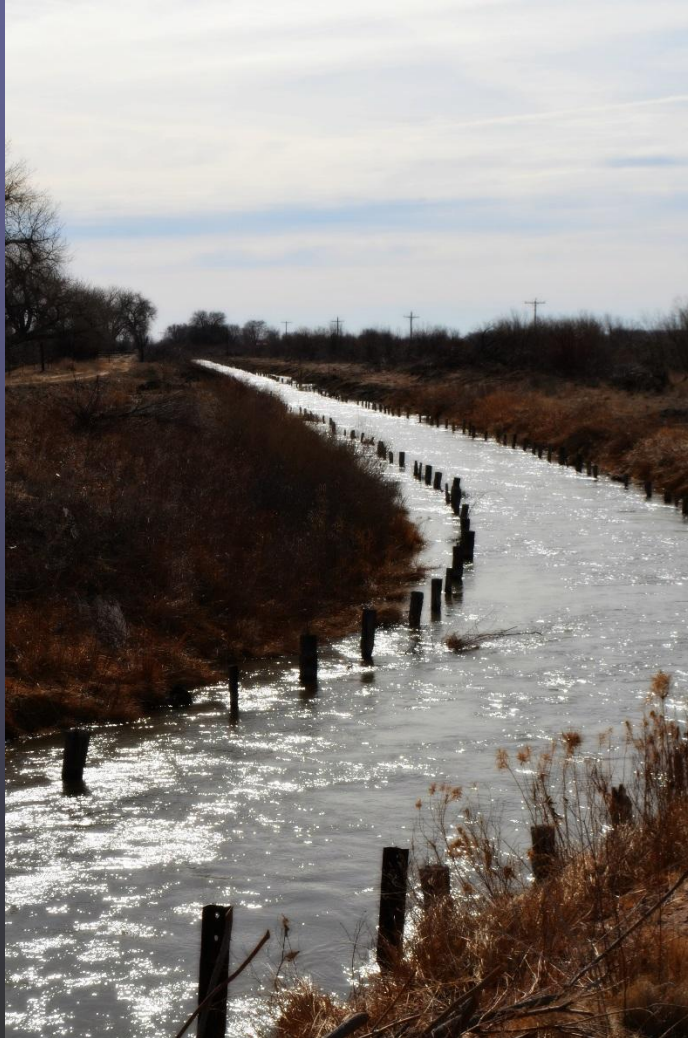
- Water Supply Developed for City
- Water Quality Benefits to River System
- Increased Productivity and Quality of Plants
- Agricultural Production Maintained on Land

Discussion-



- Difficult, but not Impossible.
- Must first meet the needs of both parties.
- Examples can be built upon.
- What is the Objective?

Questions?



Thank You for this
opportunity to
discuss some of
our experiences...