

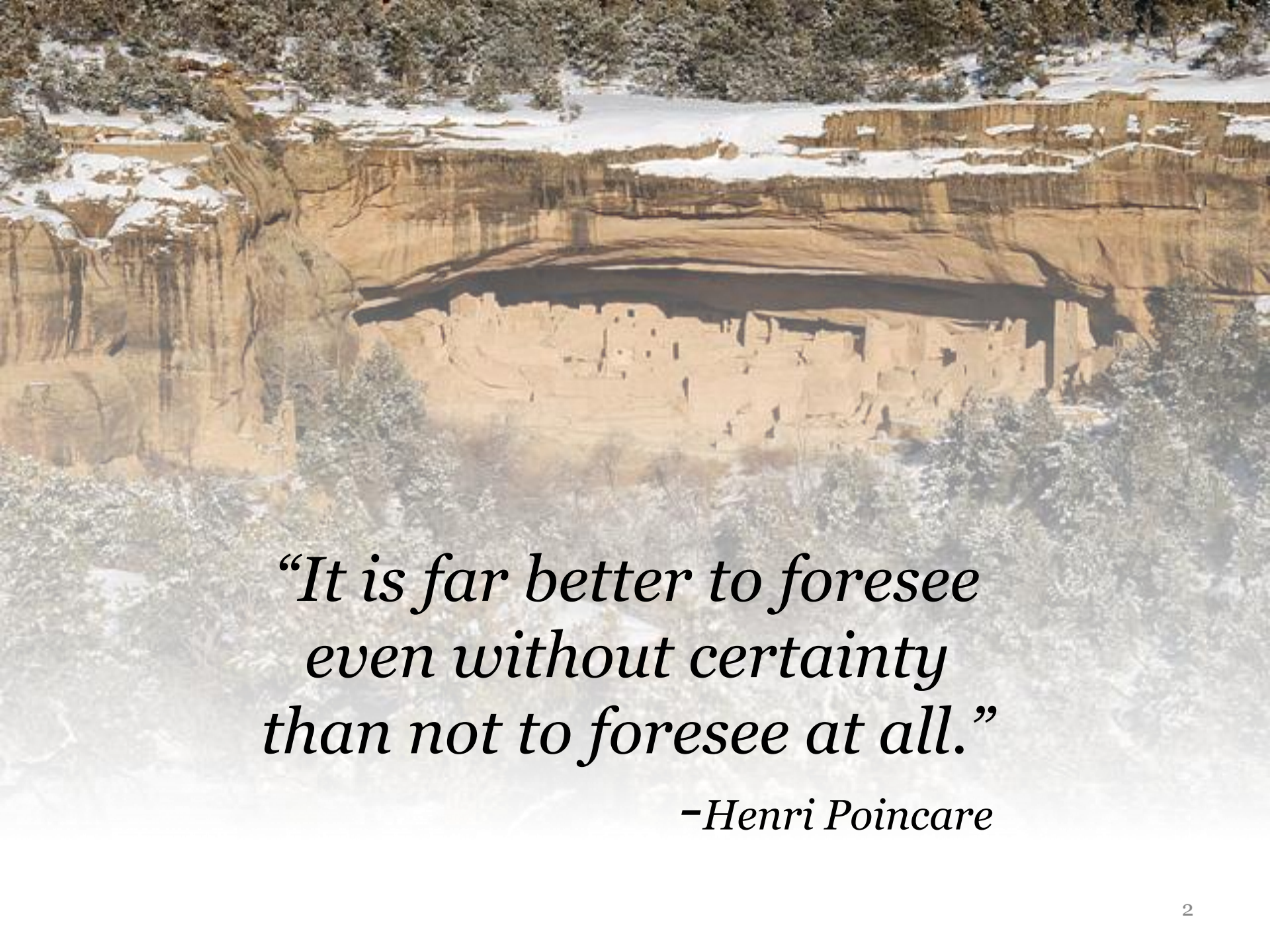


Colorado Division of Water Resources: Water Division 1  
*“Irrigationists Symposium”*

# Colorado's Water Future



John Stulp, Special Policy  
Advisor to the Governor for Water  
March 15th, 2012



*“It is far better to foresee  
even without certainty  
than not to foresee at all.”*

*–Henri Poincare*



## Recent State Water Planning Efforts

- IBCC Visioning Process and Report to Governors Ritter and Hickenlooper--“Four Legs of the Stool”
- IBCC Subcommittee Work
- SWSI 2010 and Basin Roundtable Needs Assessments (Consumptive and Non-Consumptive) Completed.
- Portfolio and Trade-Off Tool Effort—Over 30 Portfolios submitted for the March 1<sup>st</sup> Summit
- IBCC and CWCB will Finalize Portfolios



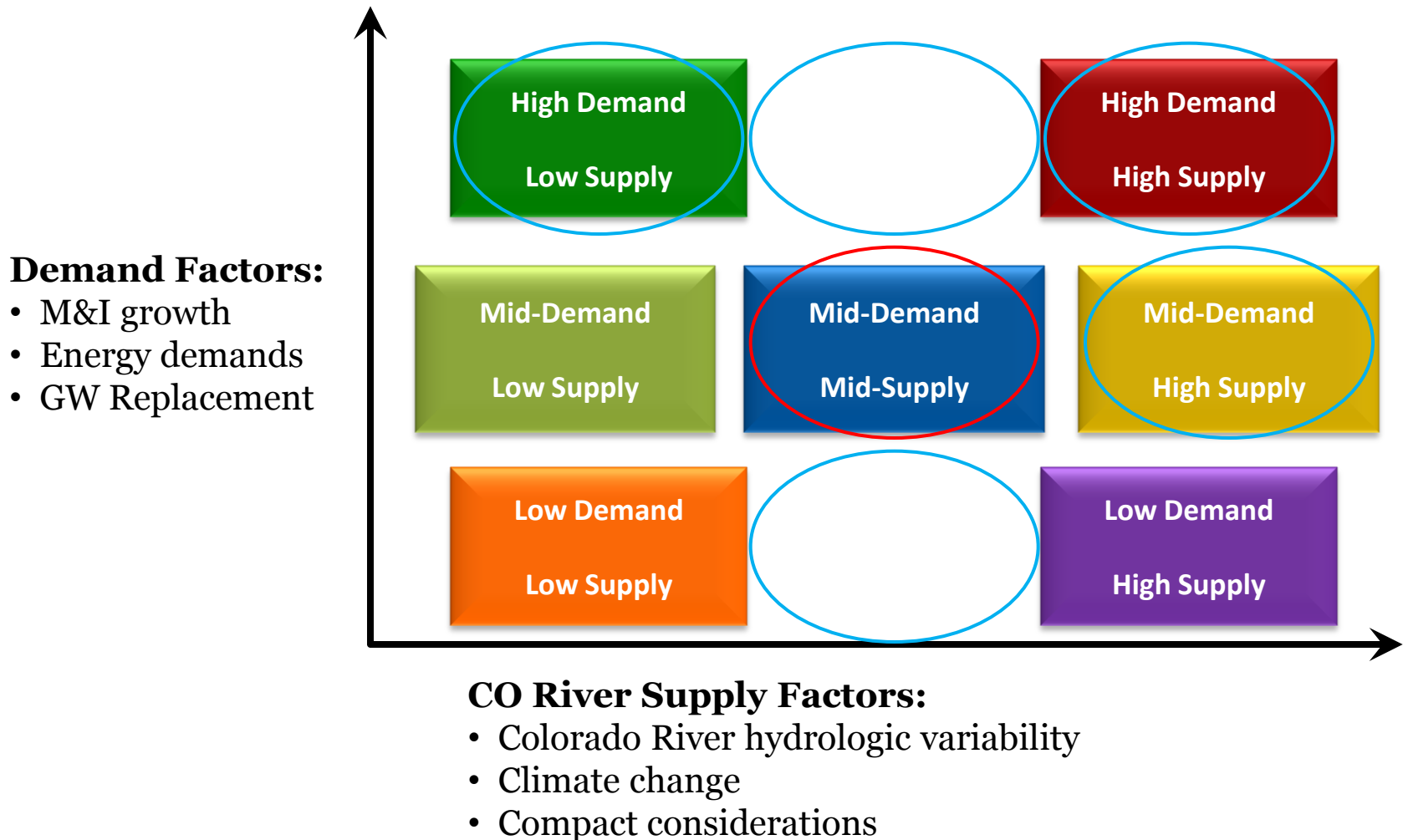


## Major tasks leading up to 2016

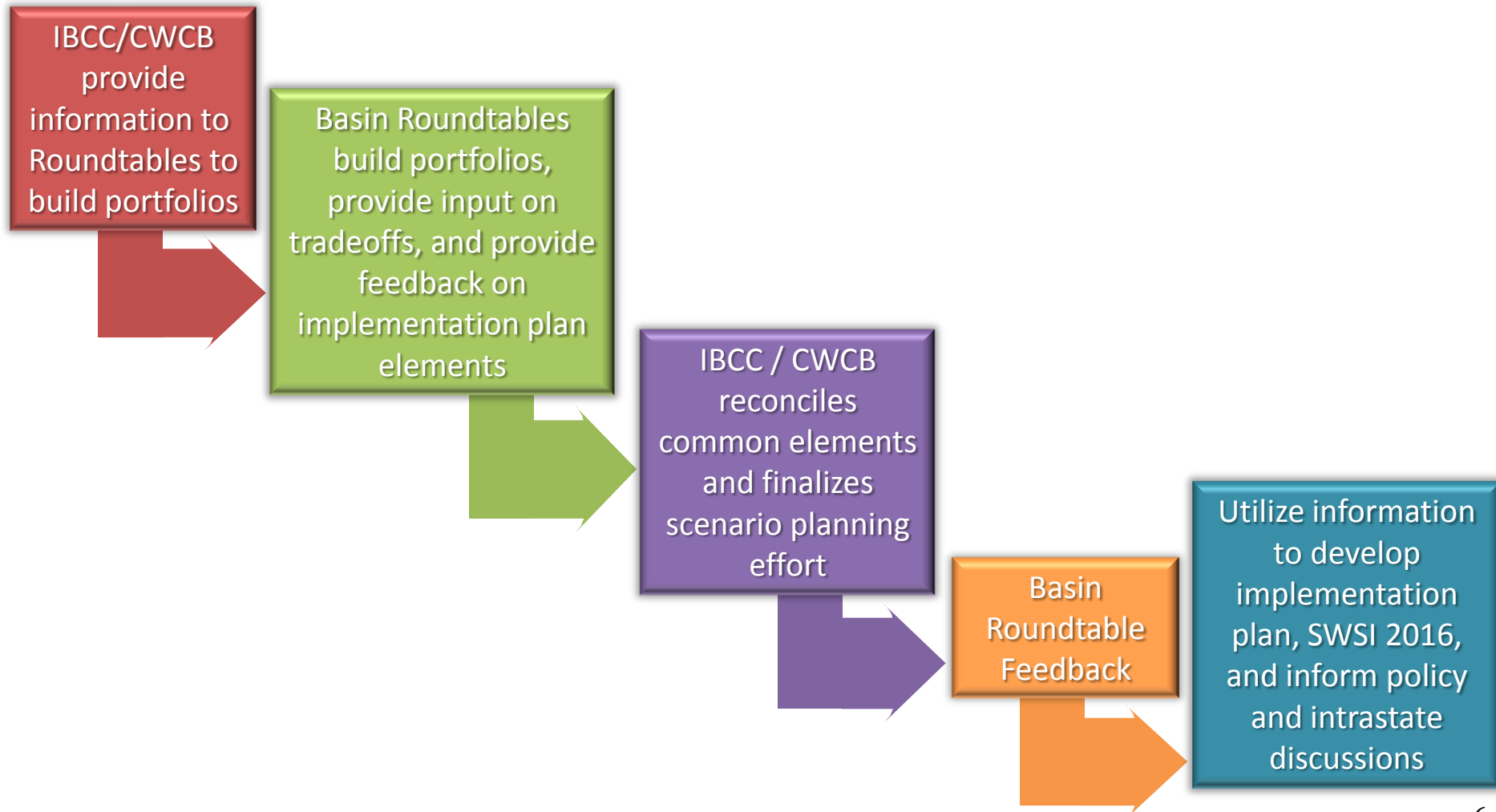
- Implement the SWSI 2010 Recommendations (16)
- Identification of and Implementation of Consumptive and Nonconsumptive Projects (grants and loans)
- Development of Implementation Plans for the Strategies
- Evaluate SWSI 2016 Methodology (involvement of the CWCB, IBCC and roundtables)
- SWSI 2016 Development
- Finalize SWSI 2016 and Water Plan

# Scenario Development is Underway:

*An Implementation Plan would include Elements Common to all Portfolios*



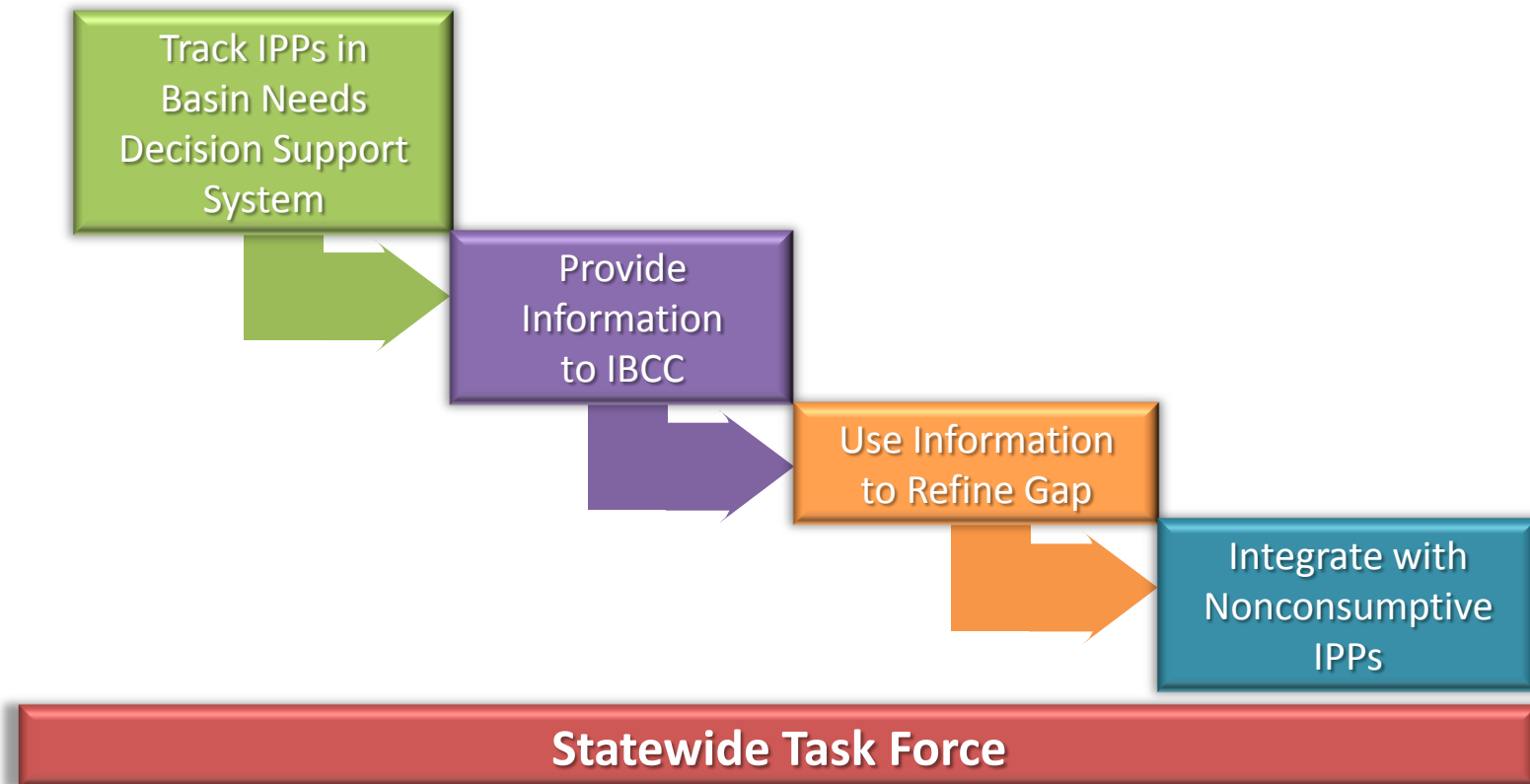
# Portfolio Framework



# "Four Legs of the Stool"



# Identified Project and Processes (IPPs)







# Examples of IPPs

- Pueblo Reservoir Enlargement
- Southern Delivery System
- Chatfield Reallocation
- Reuter Hess Reservoir
- Gross Reservoir
- Halligan & Seaman Reservoirs
- Northern Integrated Supply Project
- Pawnee Creek Reservoir



# Conservation

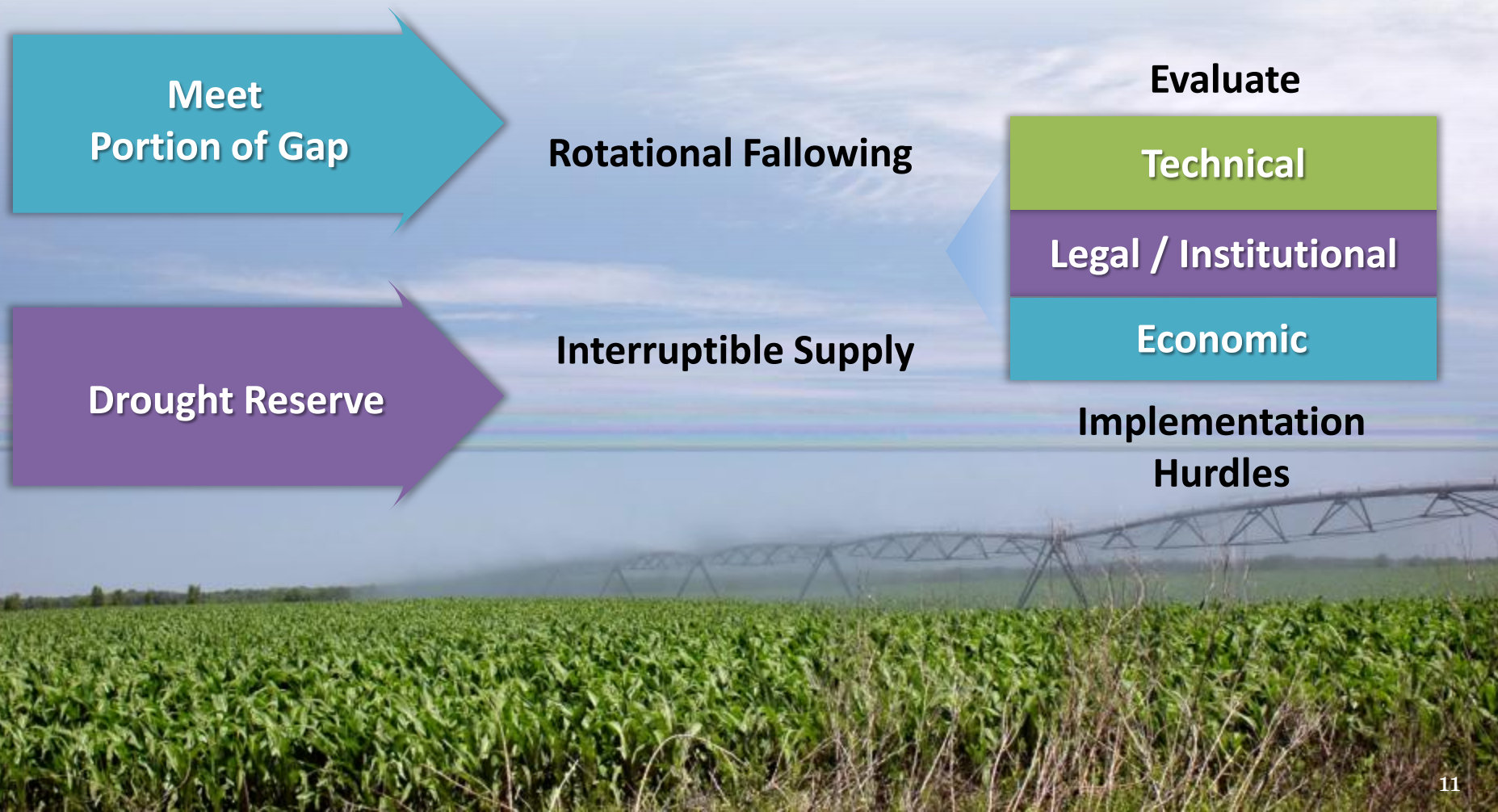
## Being Discussed by BRTs

- Amount available for gap areas
- Amount available for growth
- Amount used for drought reserve

## Upcoming Work

- Permanency of savings
- Infrastructure and Institutional arrangements

# Agricultural Transfer Can Play Two Roles to Fill the Water Supply Gap





## Progress on Alternatives to Ag Water Transfers

- CWCB/IBCC/BRT involved in discussions and projects facilitating ATMs.
- Rotational Fallowing Pilot Project in Arkansas Basin
- Lower South Platte Water Cooperative Project
- Conservation Easements and Interruptible Water Supply Agreements (e.g. 3/10 years)
- Colorado Agricultural Water Alliance (CAWA) Involvement
- Front Range Water Provider Involvement
- Agricultural Continuity





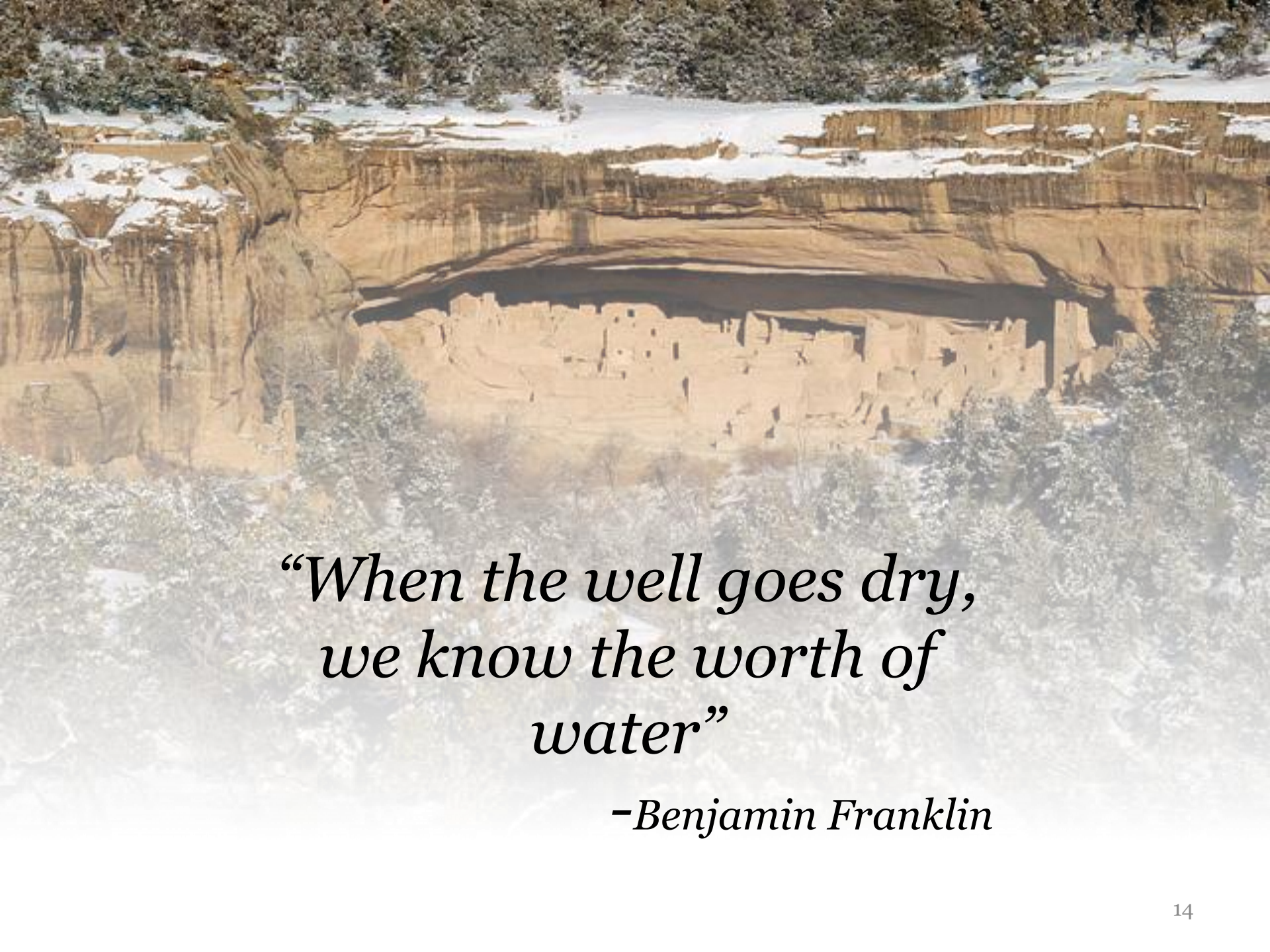
## IBCC Asked that Risk Management be Incorporated into New Water Supply Development

### **Ongoing State Activities**

- Drought Plan
- Ark/Gun Aspinall Study
- Water Banking Study
- CRWAS
- Compact Compliance Study
- BRT Flaming Gorge Committee
- Yampa Projects and Methods
- Interruptible Supply Agreements
- Denver Basin Conjunctive Use / Aquifer Storage



**Develop Conceptual  
Risk Management  
Strategies For Each  
Portfolio**



*“When the well goes dry,  
we know the worth of  
water”*

*–Benjamin Franklin*

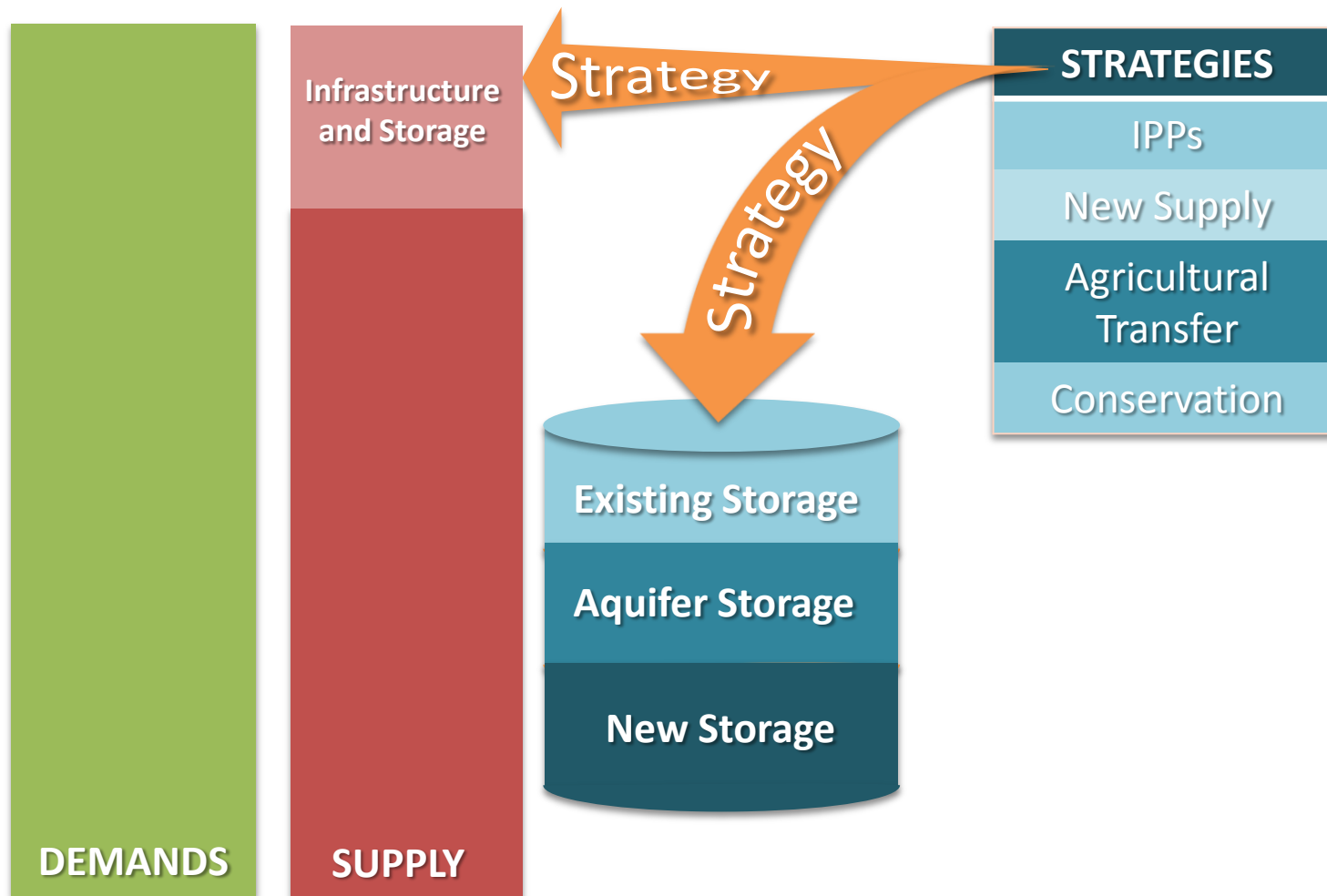


# Nonconsumptive Next Steps

## Basin Roundtables:

- Develop Nonconsumptive Implementation Plan
- Initiate 3-5 Nonconsumptive Projects
- Identify one or more pilot projects that integrate nonconsumptive with consumptive projects/needs by end of 2012
- Define technical questions related to nonconsumptive that need to be answered in your basin by the end of 2012

Evaluation of infrastructure and storage will be important for implementing all strategies





# CWCB Technical Assistance for Implementation

CWCB and roundtables work together to identify next steps for their priority projects and methods



Develop next steps based on support project and method implementation



Complete technical work identified in next steps



Documentation that could be used in CWCB Grant and Loan Programs

# Opportunities to move consumptive and nonconsumptive projects and methods forward in the short-term

## Workshop → Roundtable

- Project and Method Prioritization
- CWCB Grant and Loan Program Review
- Use CWCB consultant funds to help get projects to next stage
- Select projects
- Work to fund projects (and leverage those funds)

## Multi-Purpose Projects

- Work with water providers up front
- Identify opportunities to benefit many purposes:
  - Environmental
  - Recreation
  - Agriculture
  - Compacts
  - Municipal/Industrial



# Trends in Water Use in Colorado

- Increased Efficiency
- Adoption of Technologies in the Use and Management of Water  
(e.g. South Platte DSS, Telemetric Measurement Devices,  
Depletion/Accretion Tool, Sprinklers/Drip Systems)

## Future Work

- Agricultural Gap
- Non-Consumptive Gap
- Continue Working on M&I Gap
- Storage

An aerial photograph of a desert canyon. The canyon walls are made of reddish-brown sandstone. In the center of the canyon, there are several ancient cliff dwellings built into the rock face. The top of the canyon is a flat plateau covered in snow, with some trees and shrubs. The bottom of the canyon is filled with dense, snow-covered vegetation.

*“More Crop per Drop.”*

*-Unknown*