

Active Water Resource Management



presented by

Greg Lewis

New Mexico Interstate Stream Commission

AWSE Meeting

May 17, 2005

Denver

Prompted by Drought, New Mexico Looks for Administration Mechanisms...



New Mexico Water Law: Doctrine of Prior Appropriation



Senior Water Rights

Native Americans



Acequias



Farmers/Ranchers



Junior Water Rights

Industrial/Commercial



Residential



Municipalities



Recreational

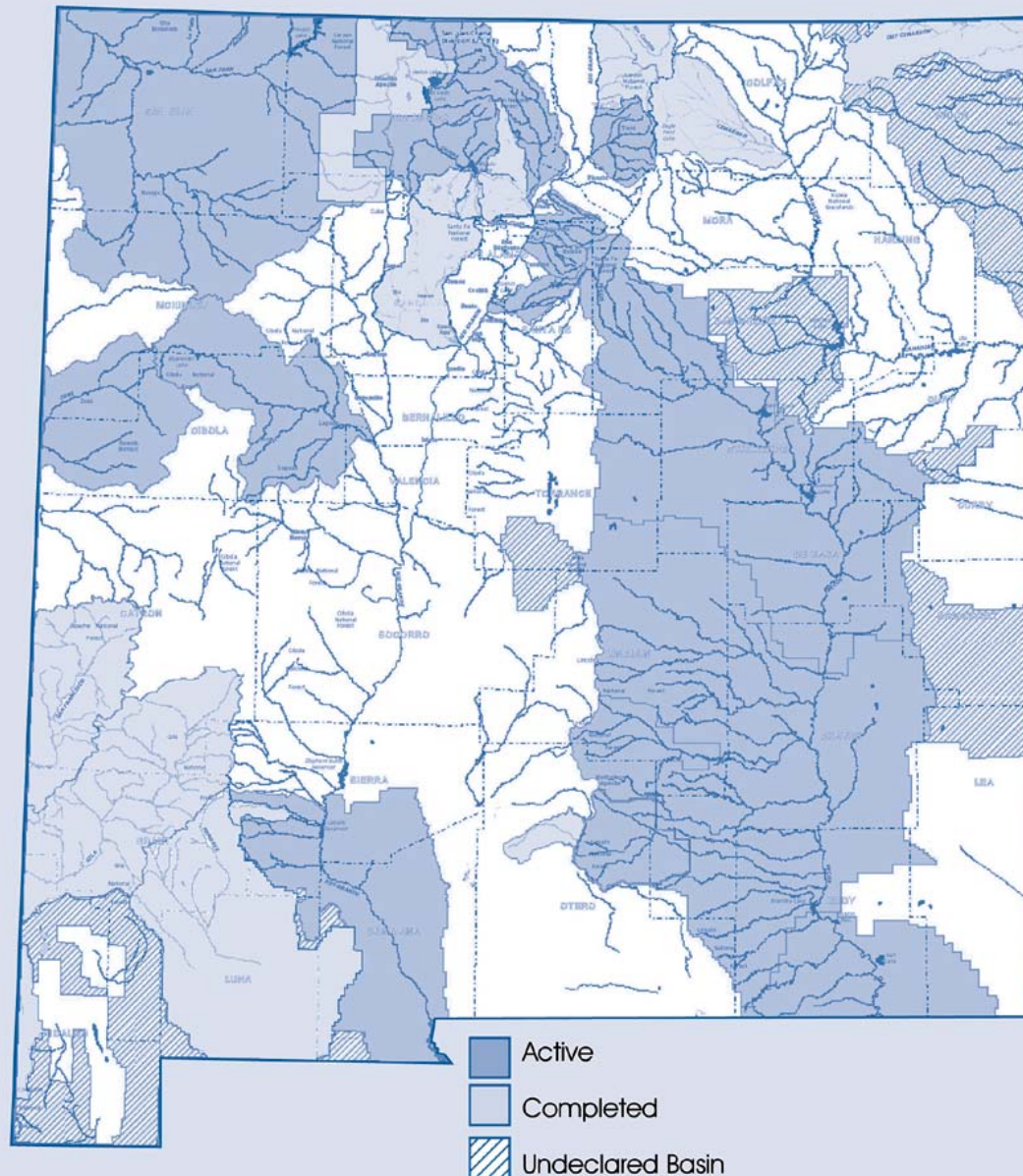


Adjudication of Water Rights

**Who owns what water
...and in what amount?**

- **Complex, Time-Consuming Process**
- **Many Adjudications Bogged Down in Litigation**

Status of Adjudications



Active Water Resource Management (AWRM)

What is it?

Active Water Resource Management (AWRM)

- **New State Law (2003)
Confirms State Engineer's
Ability to Manage Water Even
Without Completed
Adjudications**

AWRM Statute

(NMSA 1978, Chapter 72 § 2-9.1.)

- “The legislature recognizes that the adjudication process is slow, the need for water administration is urgent, compliance with interstate compacts is imperative *and...*

AWRM Statute

(NMSA 1978, Chapter 72 § 2-9.1.)

- **“the state engineer has authority to administer water allocations in accordance with the water right priorities recorded with or declared or otherwise available to the state engineer.”**

AWRM Authorities are Broad

- **Permitting Transfers**
- **Diversion Monitoring and Metering**
- **Limiting Diversions to the Amount Authorized by Existing Water Rights**
- **Expedite Water Marketing and Leasing**

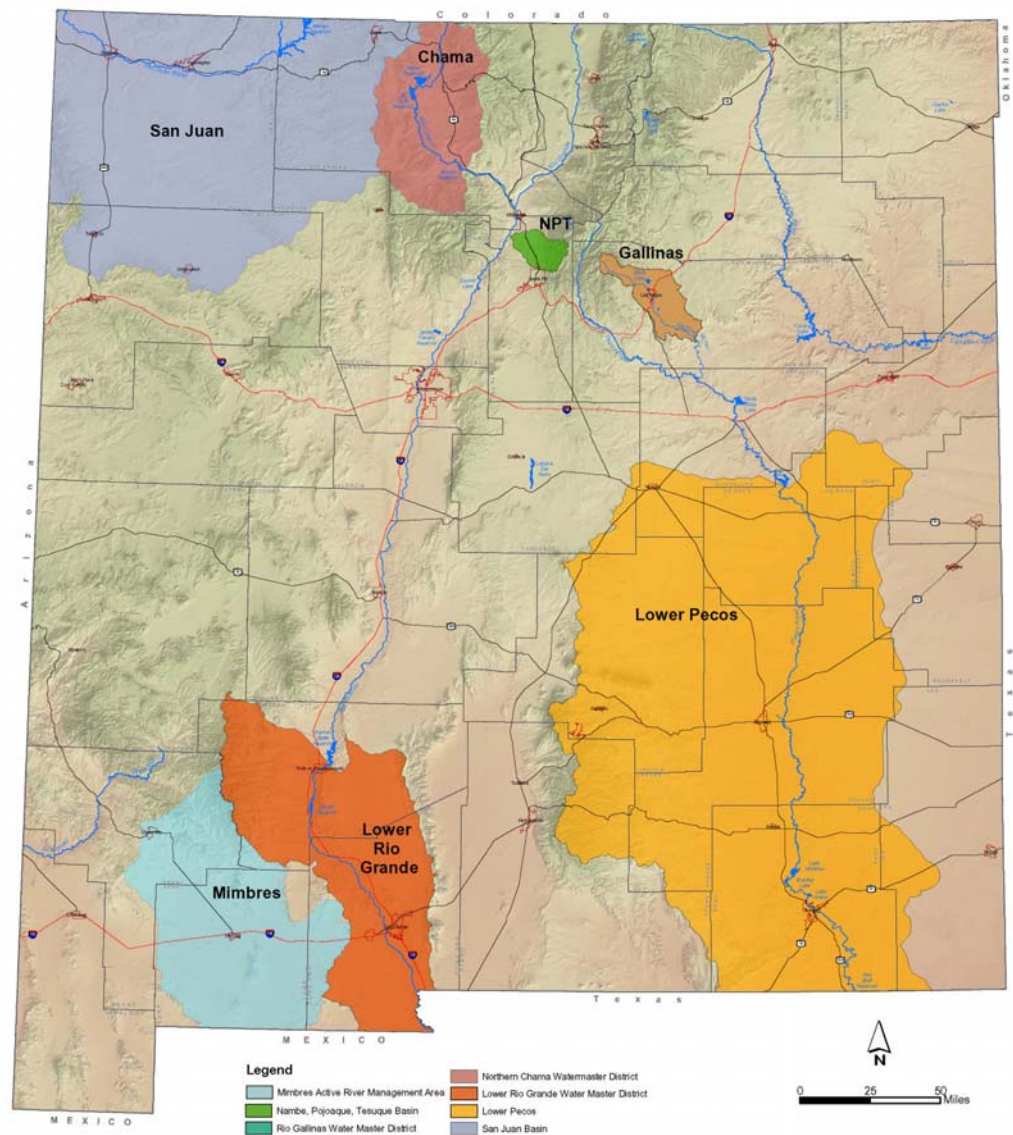
Active Water Resource Management

What are the priority areas?

Priority Stream Systems

- Rio Gallinas
- San Juan River
- Rios Nambe,
Pojoaque,
Tesuque
- Rio Chama
- Lower Rio
Grande
- Pecos River
- Mimbres
River

Active Water Resource Management Priority Basins



Note: Map produced by M. Potter
Hydrology Bureau, October 28, 2004
File: C:\pww\mimbrs\basins\basins.k



Active Water Resource Management

What is the plan as we move forward?

- **General, Statewide Regulations**
 - ◆ Promulgated December 2004
- **Basin-Specific Regulations**
 - ◆ Now Under Development

Proactive Steps to AWRM

- **Organize Selected Staff Members Into Critical Basin Teams**
- **Establish Realistic Budget for Implementation**
- **Develop a Public Communications Plan**
- **Hire and Train Water Master(s) for Each Critical Basin**

Proactive Steps to AWRM

Finally:

- **To Administer Water Effectively in Each Critical Basin!**

Other Options?

Alternative Administration

- Water Users Hold Key to Most Workable Solutions; e.g.,
 - ◆ shortage sharing
 - ◆ rotation
 - ◆ water banking

Office of the State Engineer



Interstate Stream Commission