

Coalbed Methane Stream Depletion Assessment

Study Scope of Work

2005

➤ Introduction

- Joint effort between DWR, CGS and OGCC
- Contract issued to S. S. Papadopoulos & Associates

➤ Purpose and Goals

- Determine magnitude of stream depletion, if any.
- Define nontributary areas.

Coalbed Methane Stream Depletion Assessment

Study Scope of Work

2005

➤ Scope/Focus Area

- The analysis carried out under this scope of work will focus in the San Juan Basin of Colorado

➤ Communication/Outreach

- Between the industry, water users and the respective agencies of DNR

Coalbed Methane Stream Depletion Assessment

Study Scope of Work

2005

➤ Methodology

- The depletion determination methodology applied to these analyses will be the analytical “Glover” methodology

Coalbed Methane Stream Depletion Assessment

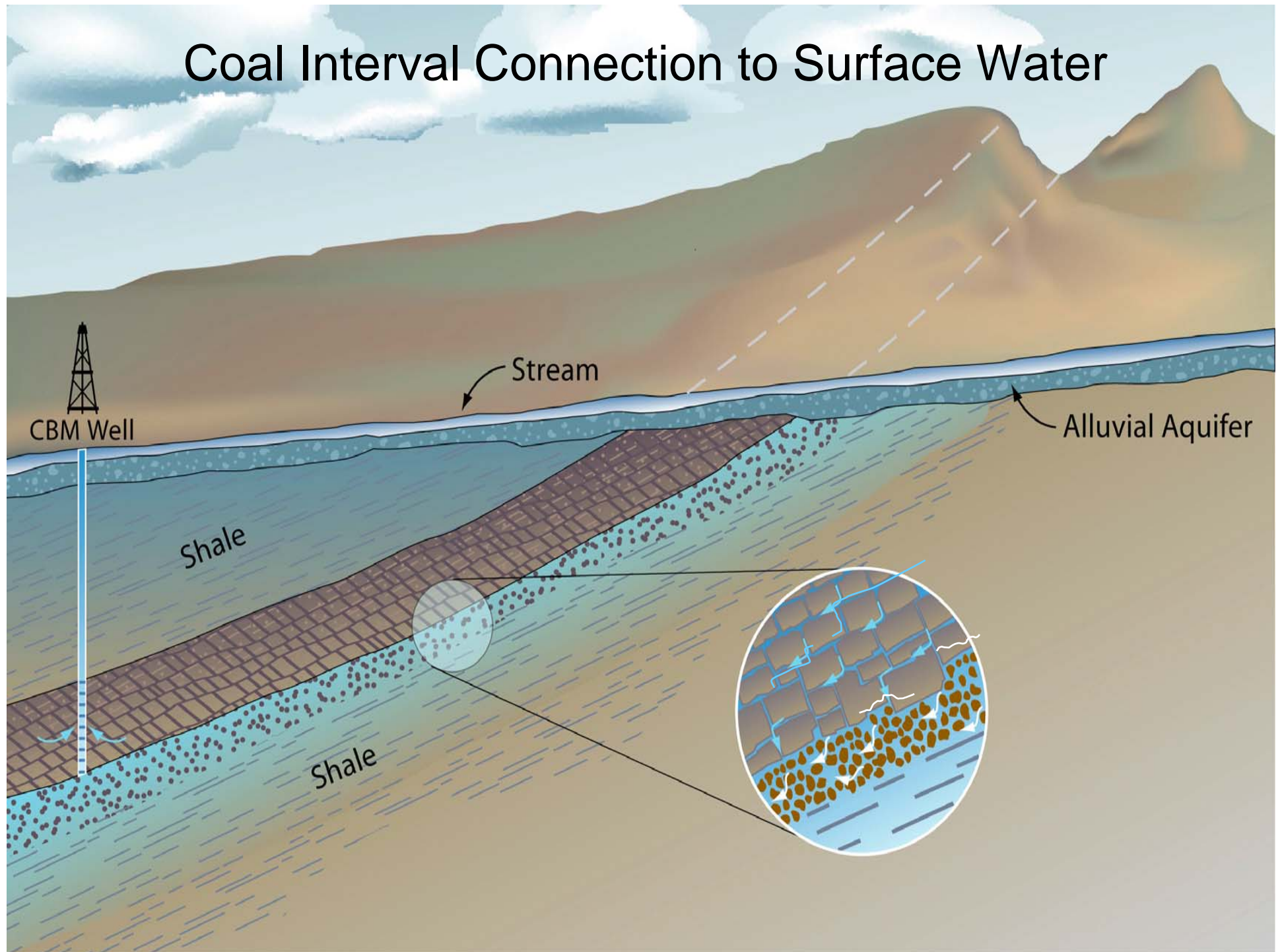
Study Scope of Work

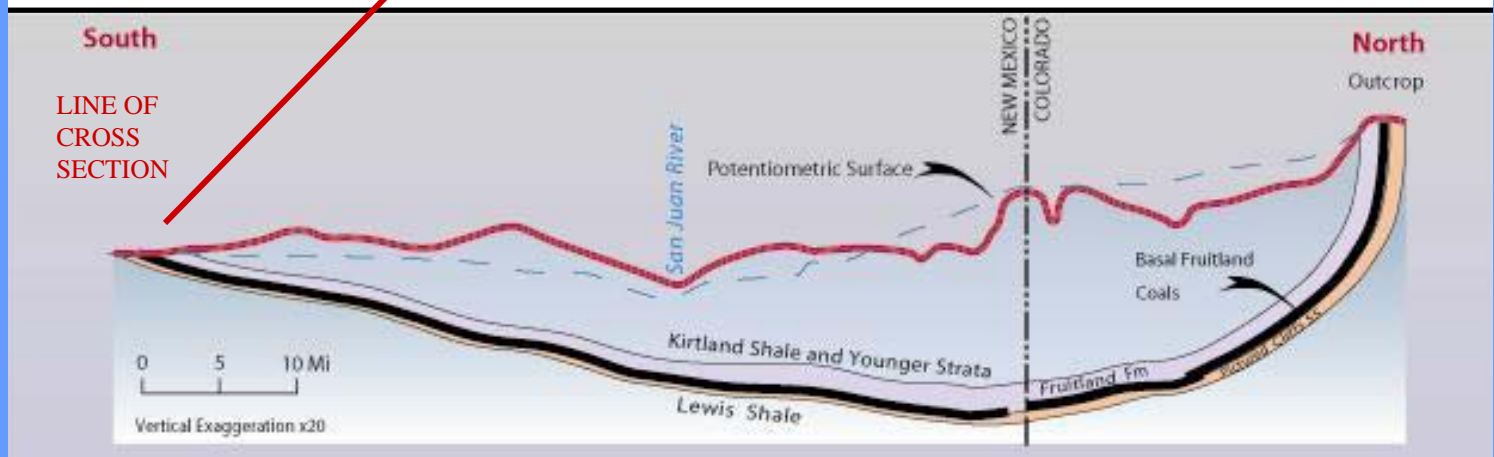
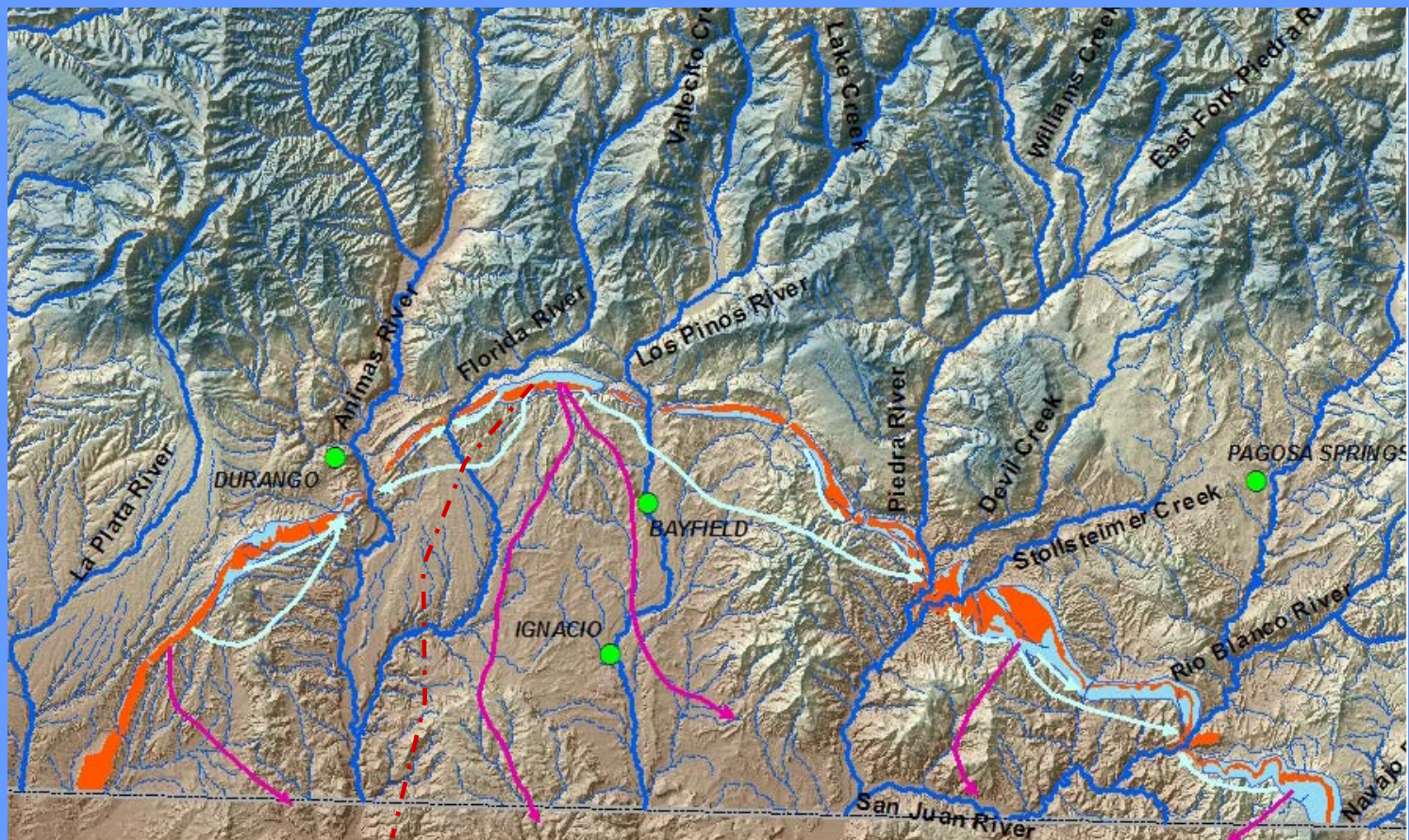
2005

- **Basin Analysis** *(to be completed by consultant with assistance from CGS)*
 - VI.A. *CBM Gas Production*
 - VI.B. *Geology*
 - VI.C. *Hydrogeology*
 - VI.D. *Topographic Constraints/Considerations*
 - VI.E. *Glover Analyses*
 - VI.F. *Conclusions*



Coal Interval Connection to Surface Water





Coalbed Methane Stream Depletion Assessment

Study Scope of Work

2005

- **Post-Pumping Ramifications**
- **Regulatory Framework**
- **Potential Beneficial Uses of Discharged Wastewater**
- **Interstate Ramifications**
- **Report: Results, Conclusions and Recommendations** (*to be completed by consultant with assistance from CGS*)

Coalbed Methane Stream Depletion Assessment

Study Scope of Work

2005

- **Agency Review**

- **Timeline**

- This project and all work including the final report will be completed by December 1, 2005

Coalbed Methane Stream Depletion Assessment

Study Scope of Work

2005

➤ Budget

- Funded jointly by CGS and OGCC. The total budget is \$64,000 split between CGS and OGCC. \$15,000 of the fund from CGS will be used to fund portions of this study completed by CGS staff.
- Based on the results of this study & availability of funding, similar studies may be conducted in other basins where CBM development is occurring.