

CWCB/DWR Sterling Groundwater Pilot Project Status Update

September 9, 2014



Select

Suggested Sites ▾ Free Hotmail Web Slice Gallery ▾ Urban Legends Reference ...

Issues in Sterling

Page ▾



Division of Water Resources

Department of Natural Resources

[Home](#)[Ground Water](#)[Surface Water](#)[Data & Maps](#)[Documents & Forms](#)[Division Offices](#)> [Division Offices](#) > [Division 1 \(Greeley\)](#) > [High Ground Water Issues in Sterling](#)

Division 1 (Greeley)

[Active Calls in Division 1](#)[Division 1 Events and Links](#)[Gilcrest/LaSalle Groundwater Pilot Project](#)[High Ground Water Issues in Sterling](#)[+ Division 2 \(Pueblo\)](#)[+ Division 3 \(Alamosa\)](#)[+ Division 4 \(Montrose\)](#)[+ Division 5 \(Glenwood Springs\)](#)[+ Division 6 \(Steamboat Springs\)](#)[+ Division 7 \(Durango\)](#)

High Ground Water Issues in Sterling

Information and Data Collection Effort

Updated 7/14/2014

In 2011, homeowners notified state officials of undesirable impacts related to high groundwater levels specifically in the Country Club Hills and Pawnee Ridge subdivisions in Sterling. The Governor's Water Policy Advisor, John Stulp, convened a number of meetings with stakeholders to understand the issues. In response to those meetings, the Colorado Water Conservation Board allocated funding for the Division of Water Resources (DWR) to undertake a multi-year project to gather the relevant data necessary to identify the factors contributing to the high groundwater levels in these areas and ultimately to commission an independent analysis and interpretation of the potential causal relationships leading to recommendations to mitigate those impacts. DWR staff have undertaken an effort to monitor groundwater levels; compile climate, diversion, and recharge data; and characterize the hydrogeology within the areas of interest to better understand the groundwater system. Preliminary information and data collected from this investigation is updated regularly to allow others access to the data and keep the stakeholders informed.

The links below direct the user to Adobe PDF documents in the areas of: 1) project background and geology; 2) updated climate, groundwater level, diversion, and recharge data; and 3) presentations.

[Scope of Work, Geology, and Drilling Info](#)

June 2014 [Climate Data](#)June 2014 [Groundwater Level Data](#)June 2014 [Recharge Data](#)

Presentations

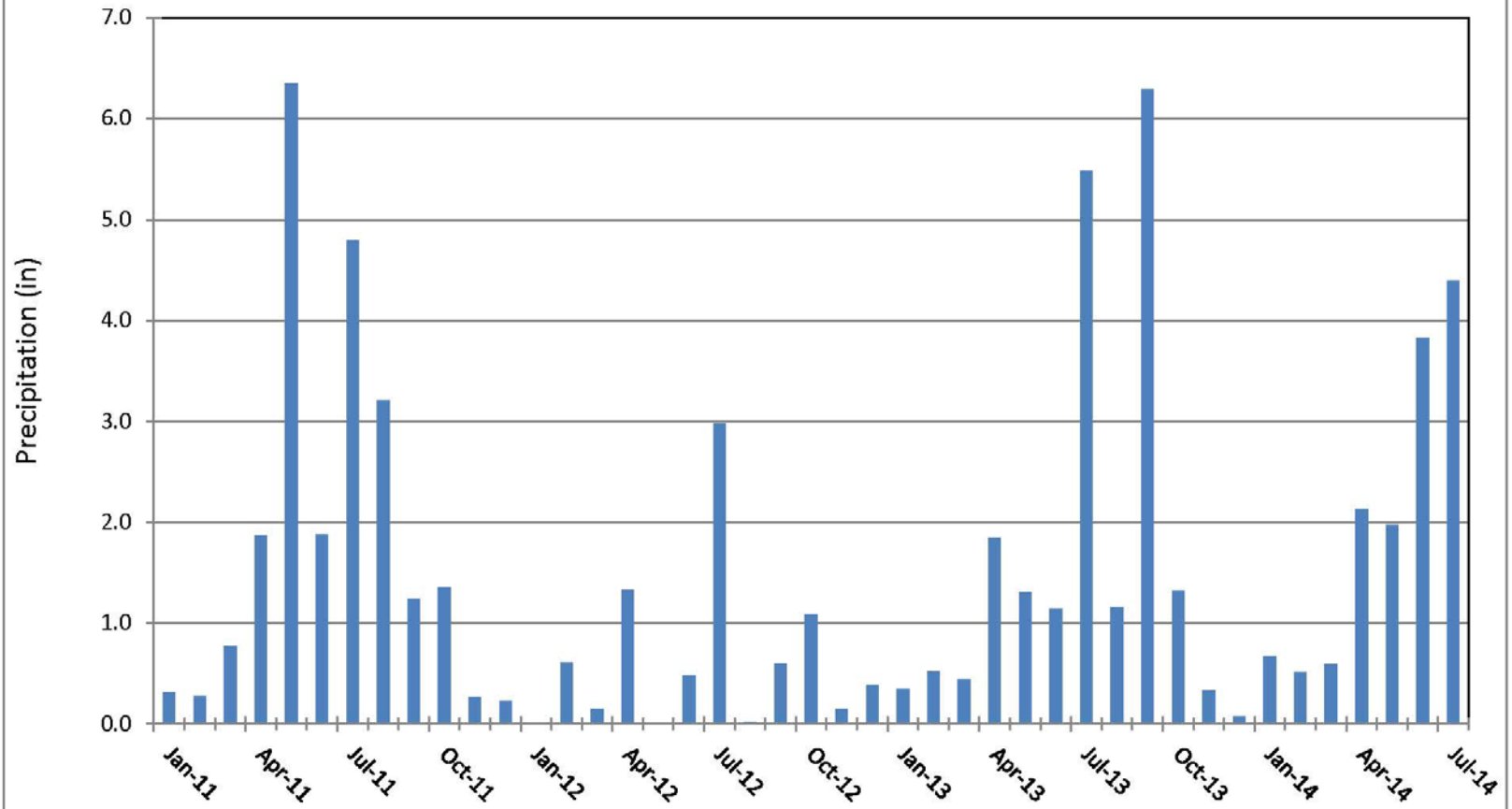
[February 11, 2014](#)

Sterling Groundwater Pilot Project

NCWCD Monthly Total Precipitation

NCWCD Sterling 108 Station

Period of Record: January, 2011- July, 2014

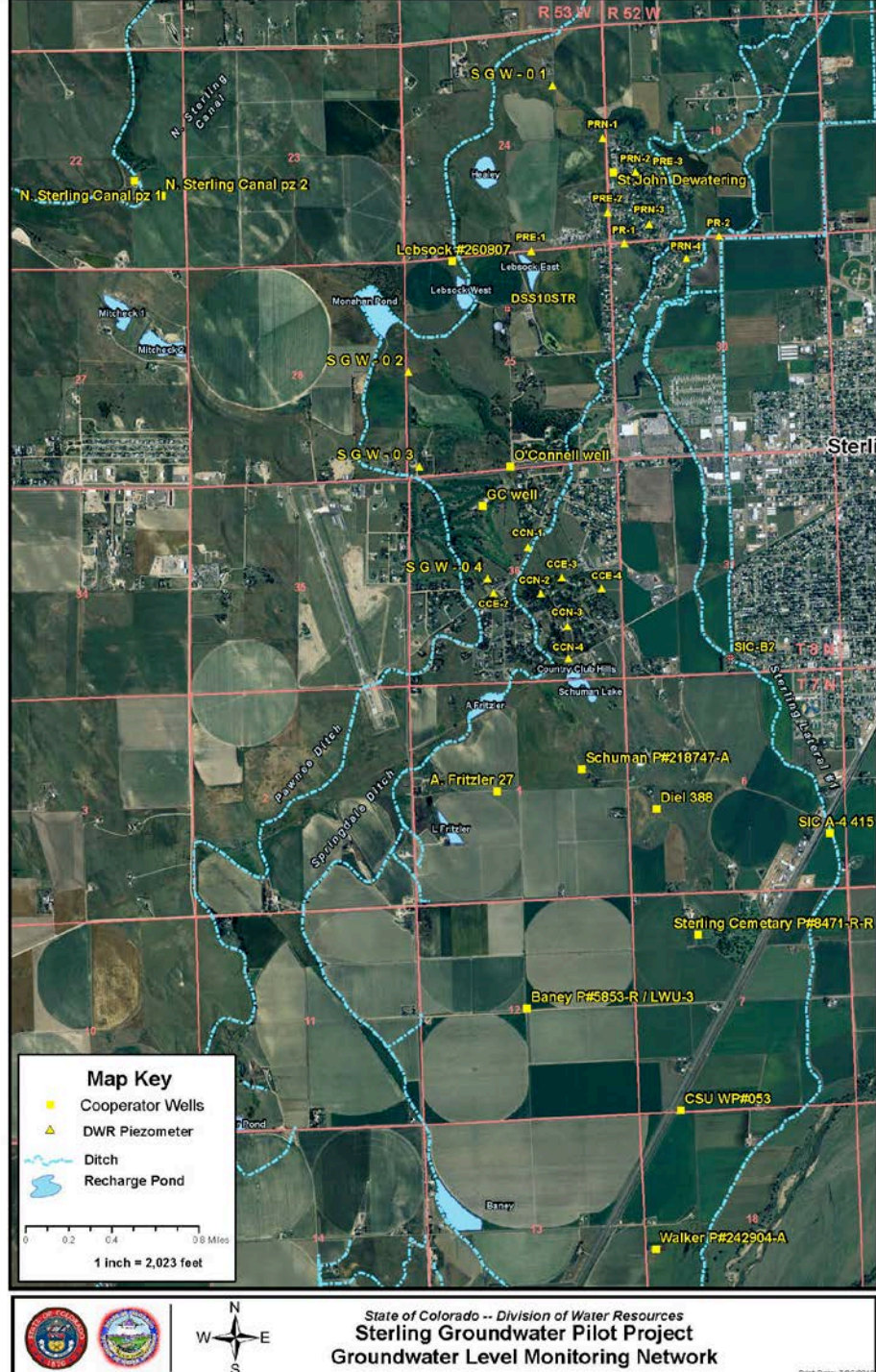


36 Wells Measured

20 Dedicated MWs

1 DSS well

15 Coop wells



Sterling Country Club Hills Groundwater Pilot Project

Map Key

- Proposed Piezometers
- Wells
- Ditch
- Recharge Ponds



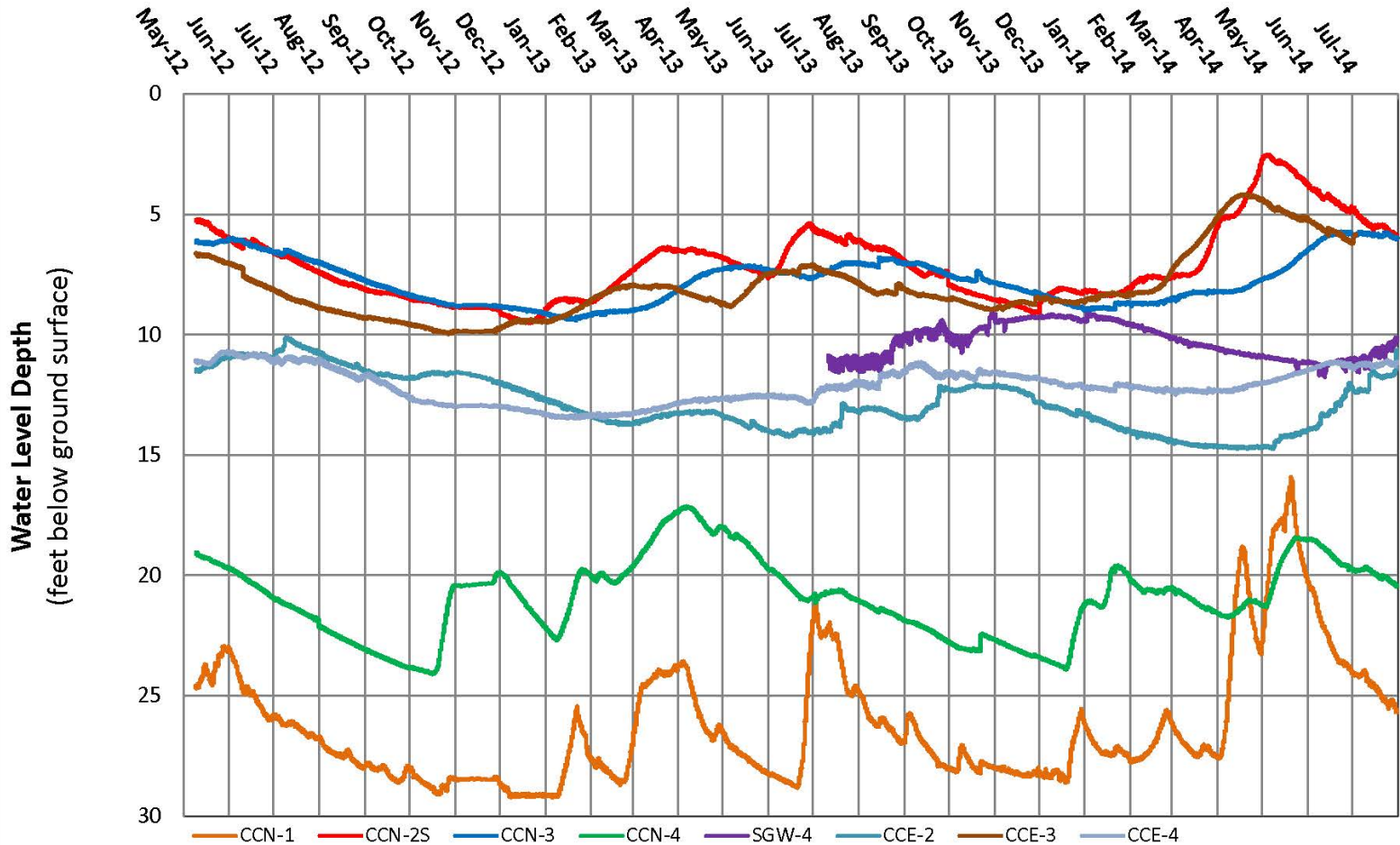
0 250 500 Feet
1" = 500'

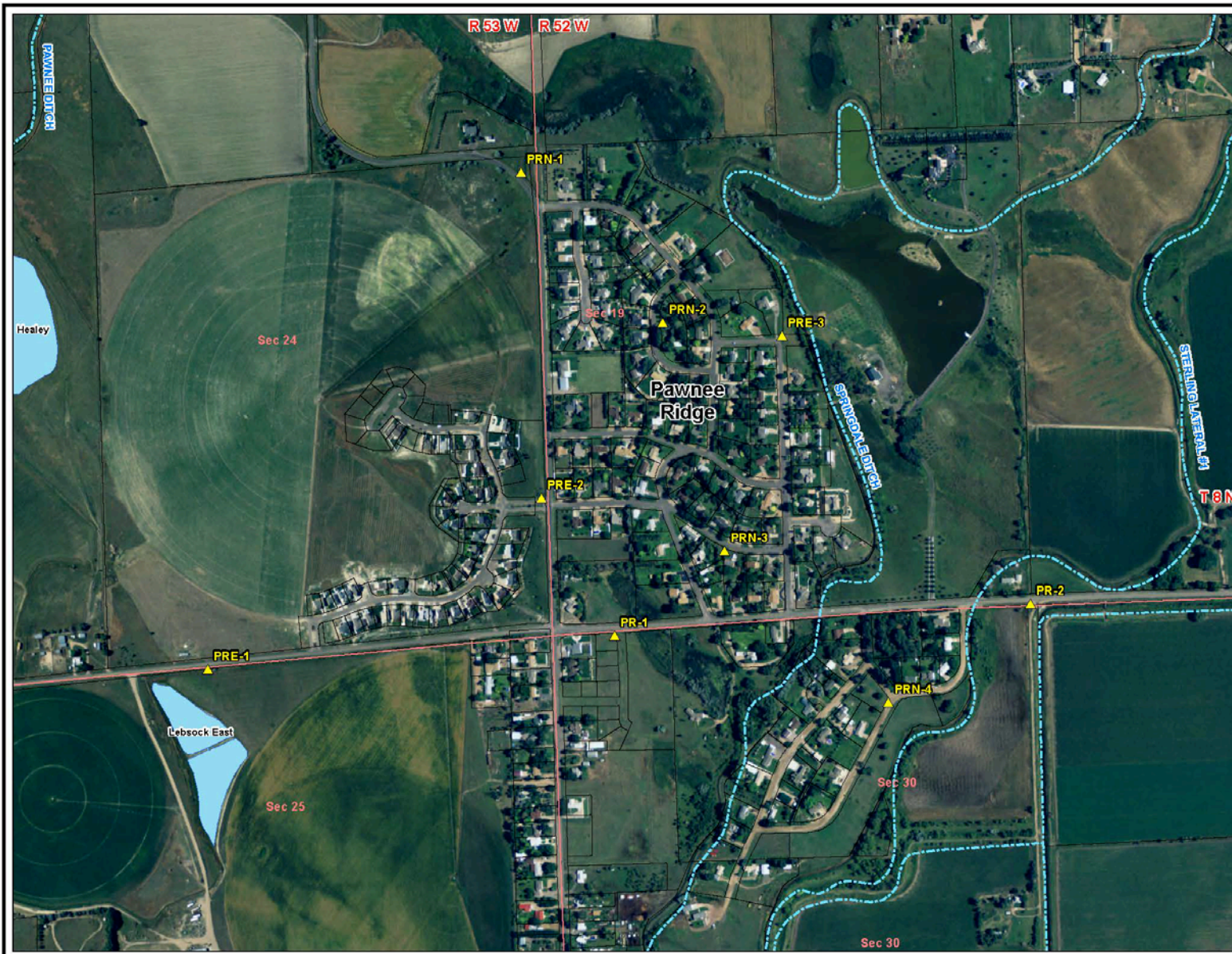


Sterling Groundwater Pilot Project

Country Club Hills Wells Groundwater Level

Period of Record: May 9, 2012 - July 31, 2014





State of Colorado
Division of Water Resources

Sterling Groundwater Pilot Project Pawnee Ridge Area

Map Key

-  Proposed Piezometer Locations
-  Ditch
-  Recharge Ponds



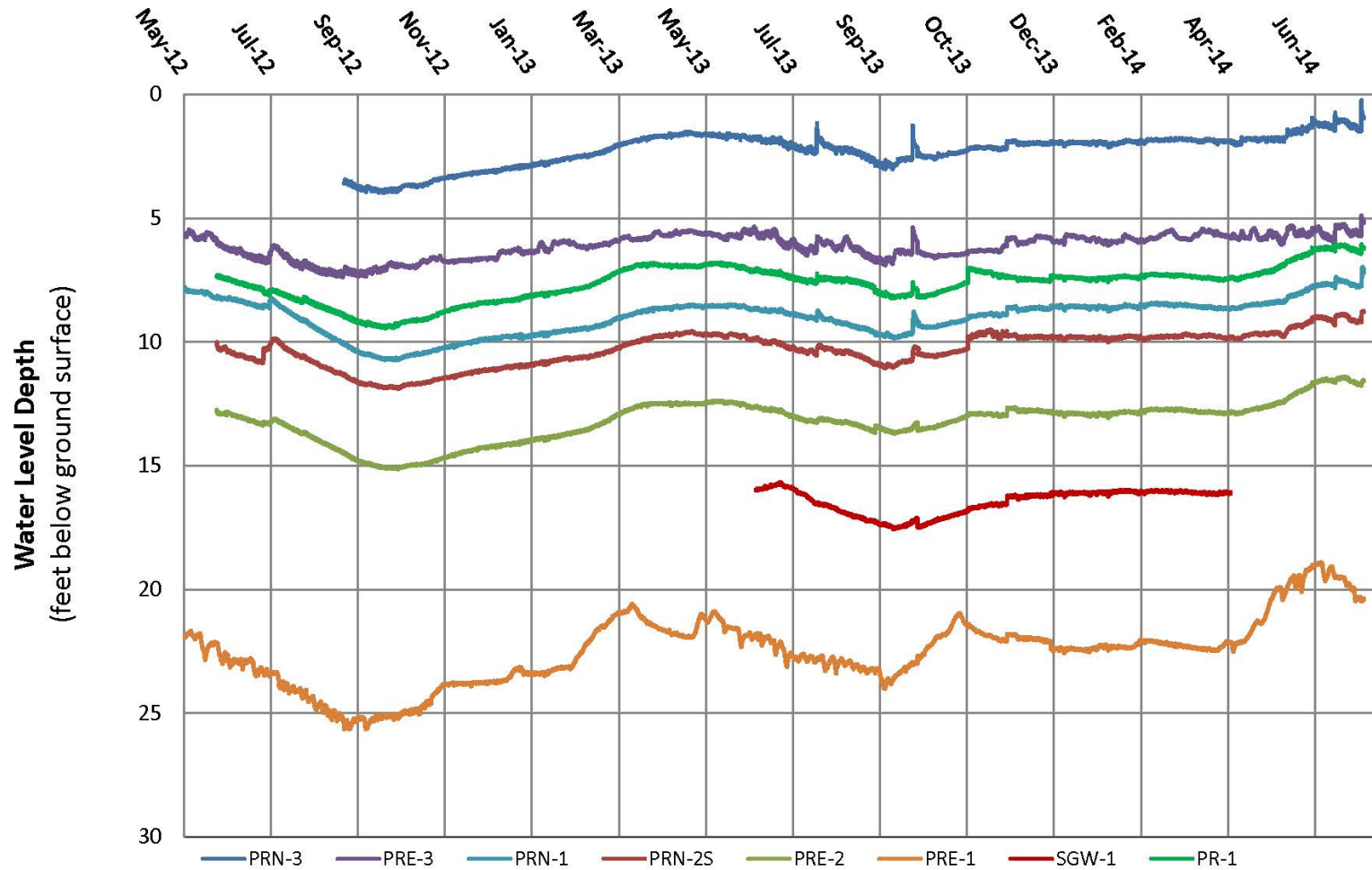
0 250 500 Feet
1" = 500'



Sterling Groundwater Pilot Project

Pawnee Ridge Wells North of CR 30 and SGW-01 Groundwater Level

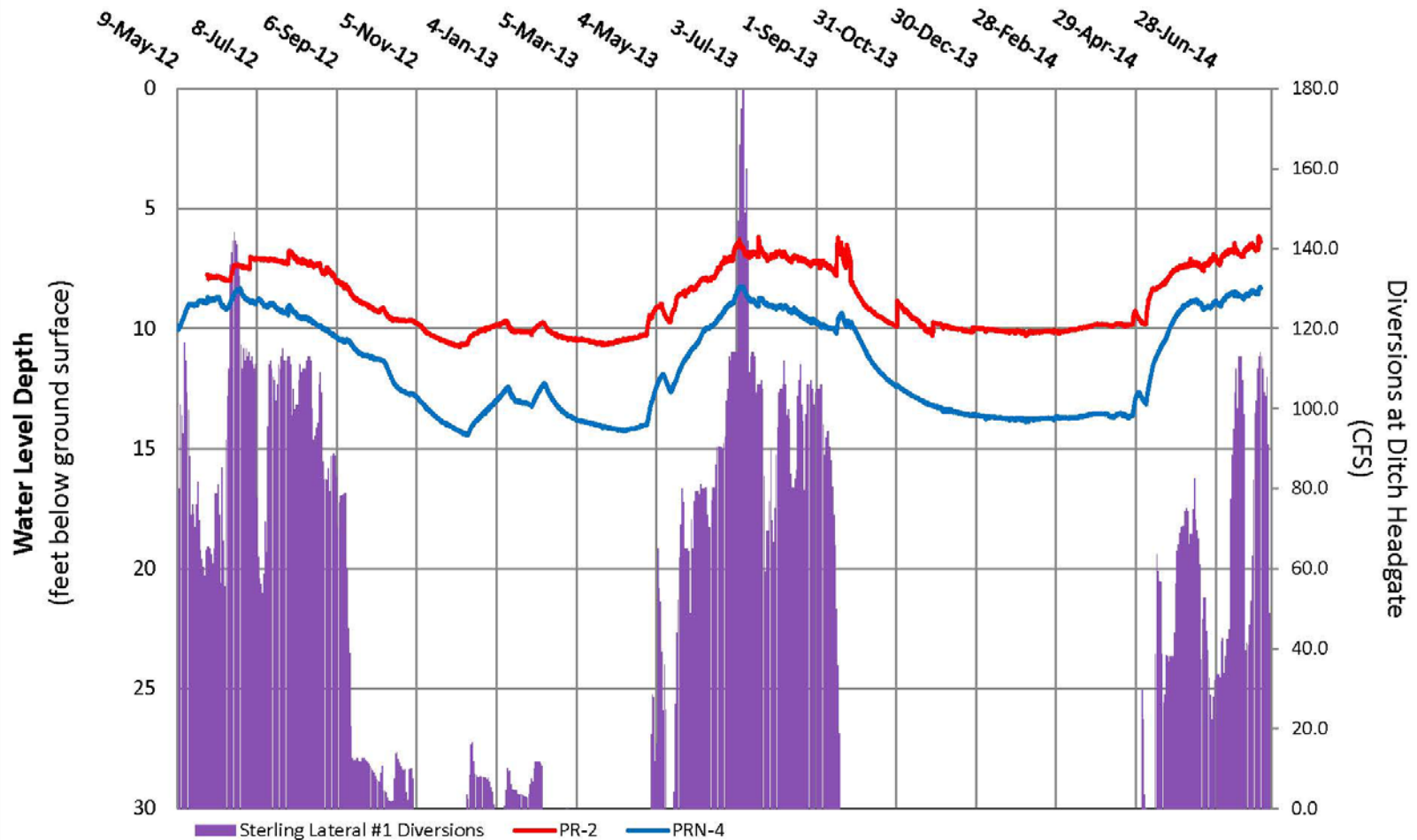
Period of Record: May 9, 2012 - July 31, 2014



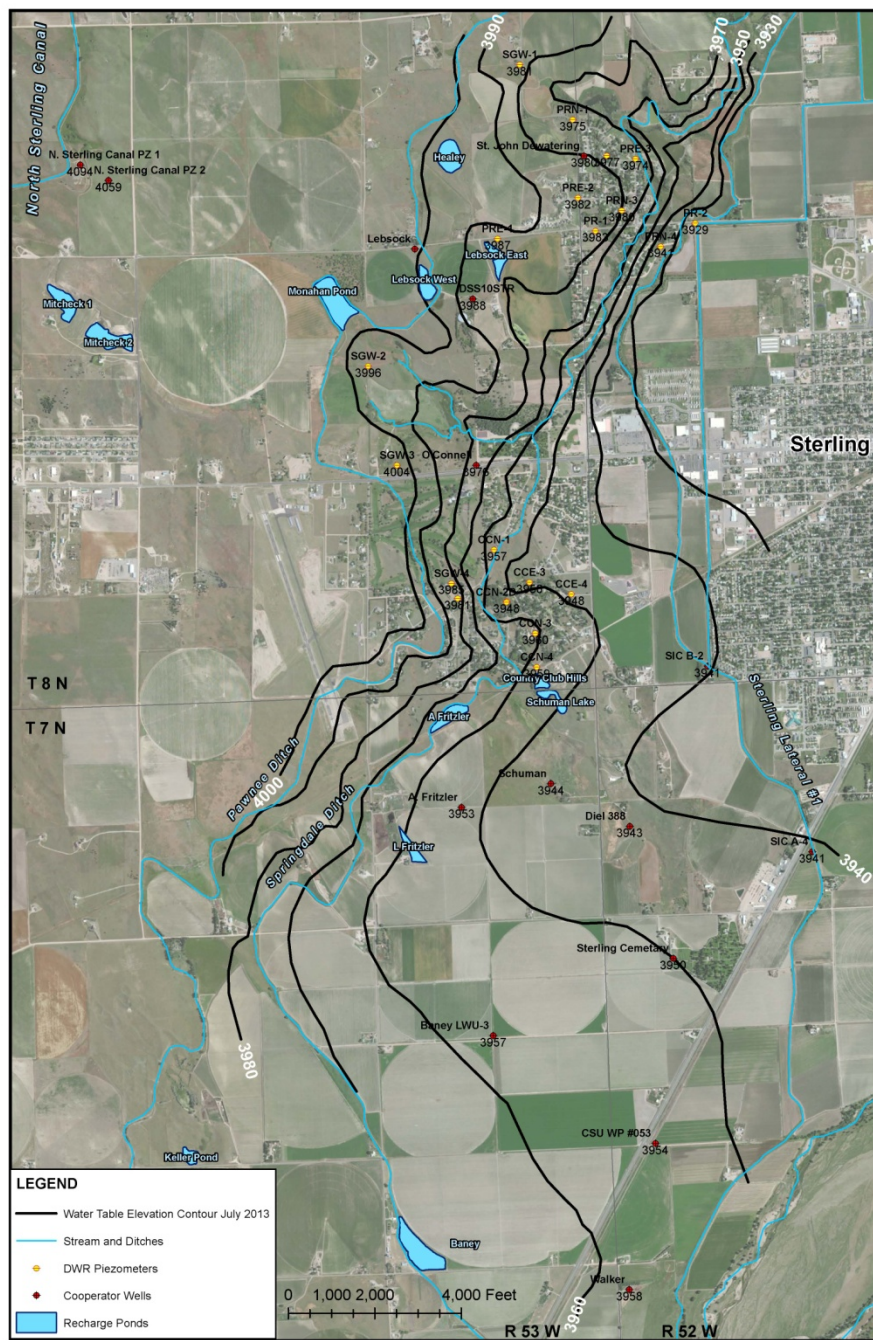
Sterling Groundwater Pilot Project

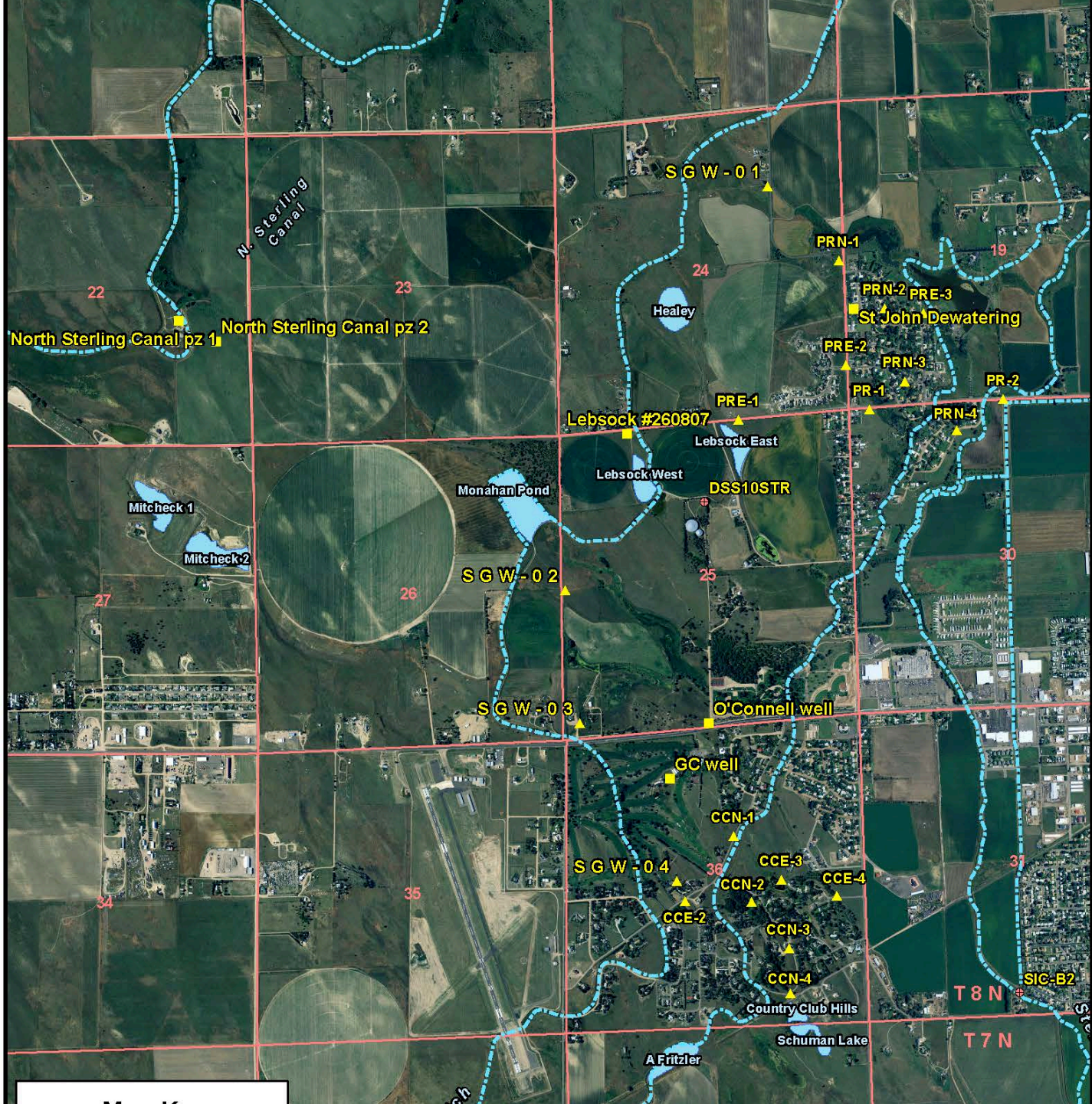
Pawnee Ridge Wells South of CR 30 Groundwater Level with Sterling Lateral #1 Diversions

Period of Record: May 9, 2012 - July 31, 2014

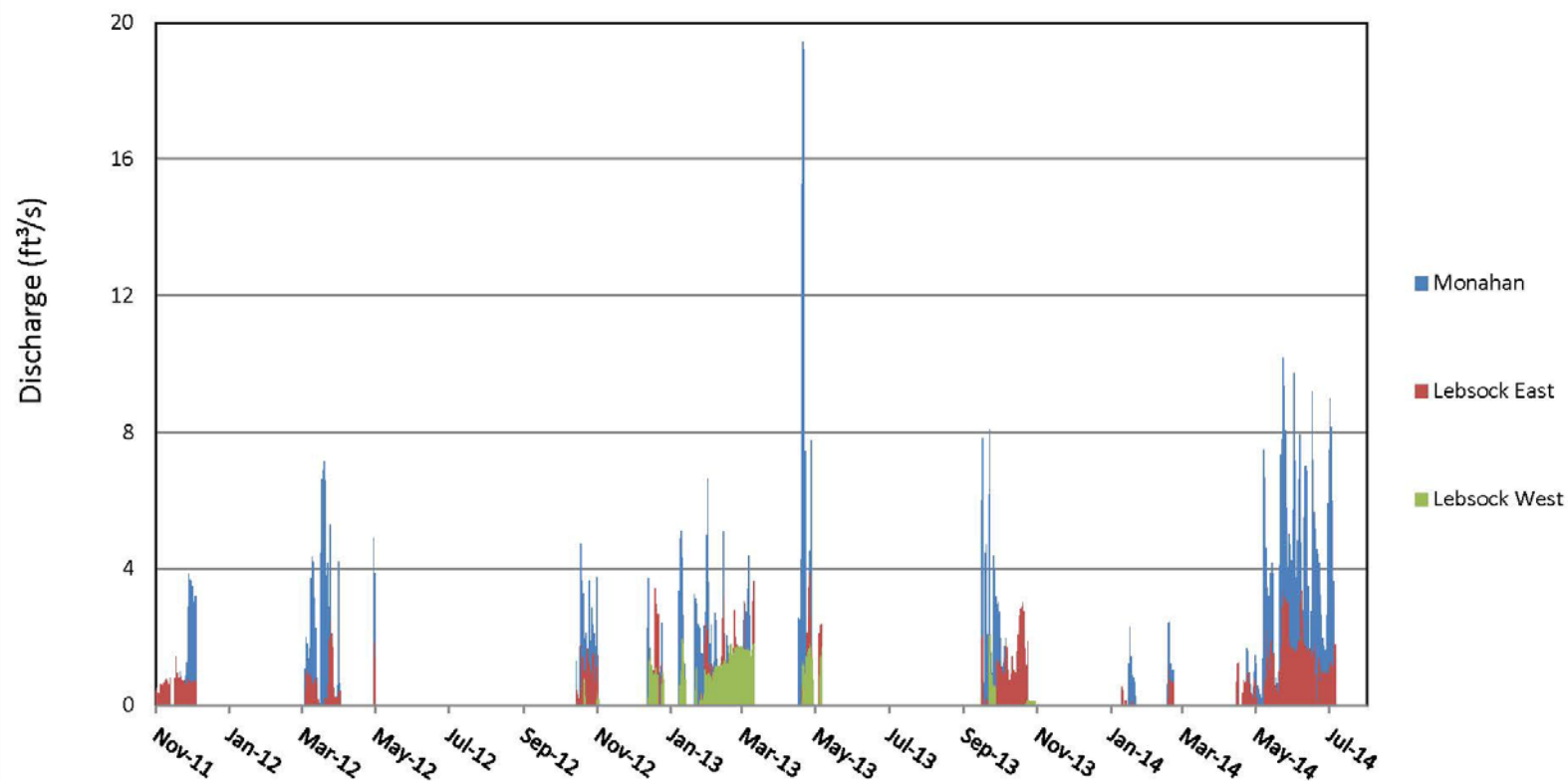


Data provided by Colorado Division of Water Resources
Project funded by Colorado Water Conservation Board

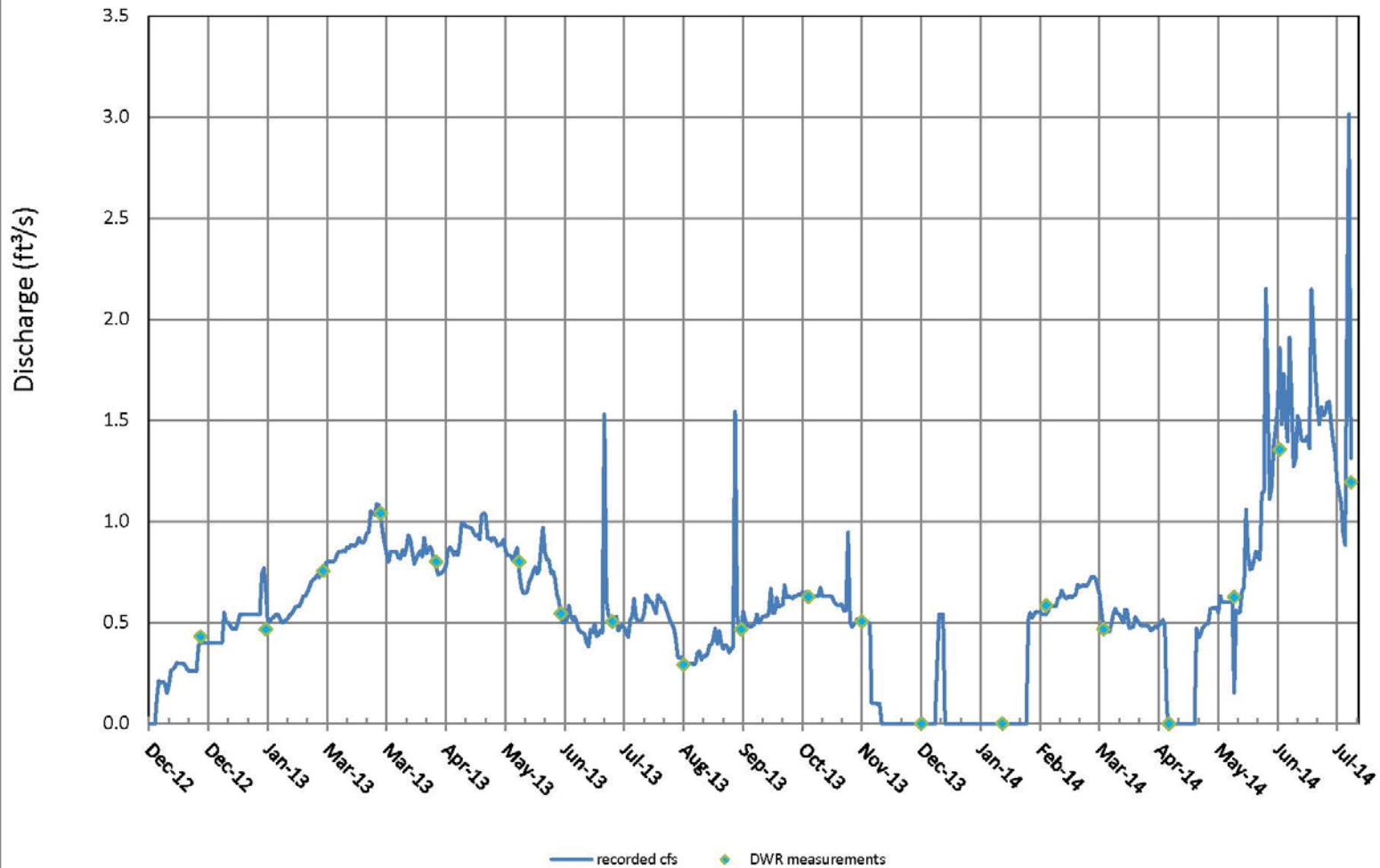




Daily Recharge to Ponds on Pawnee Ditch



Sterling Groundwater Pilot Project
Sand Creek Discharge at Pioneer Park
Period of Record: December 5, 2013 - July 31, 2014



Data provided by Colorado Division of Water Resources
Project funded by Colorado Water Conservation Board

A wide river flows through a landscape with sandy banks and bare trees. The sky is blue with some clouds. The river has several sandbars and small islands. The trees are mostly without leaves, suggesting a cooler season.

**Thanks for your attention
- Questions?**

**Ralf Topper
(303) 866-3581 x8227
ralf.topper@state.co.us**