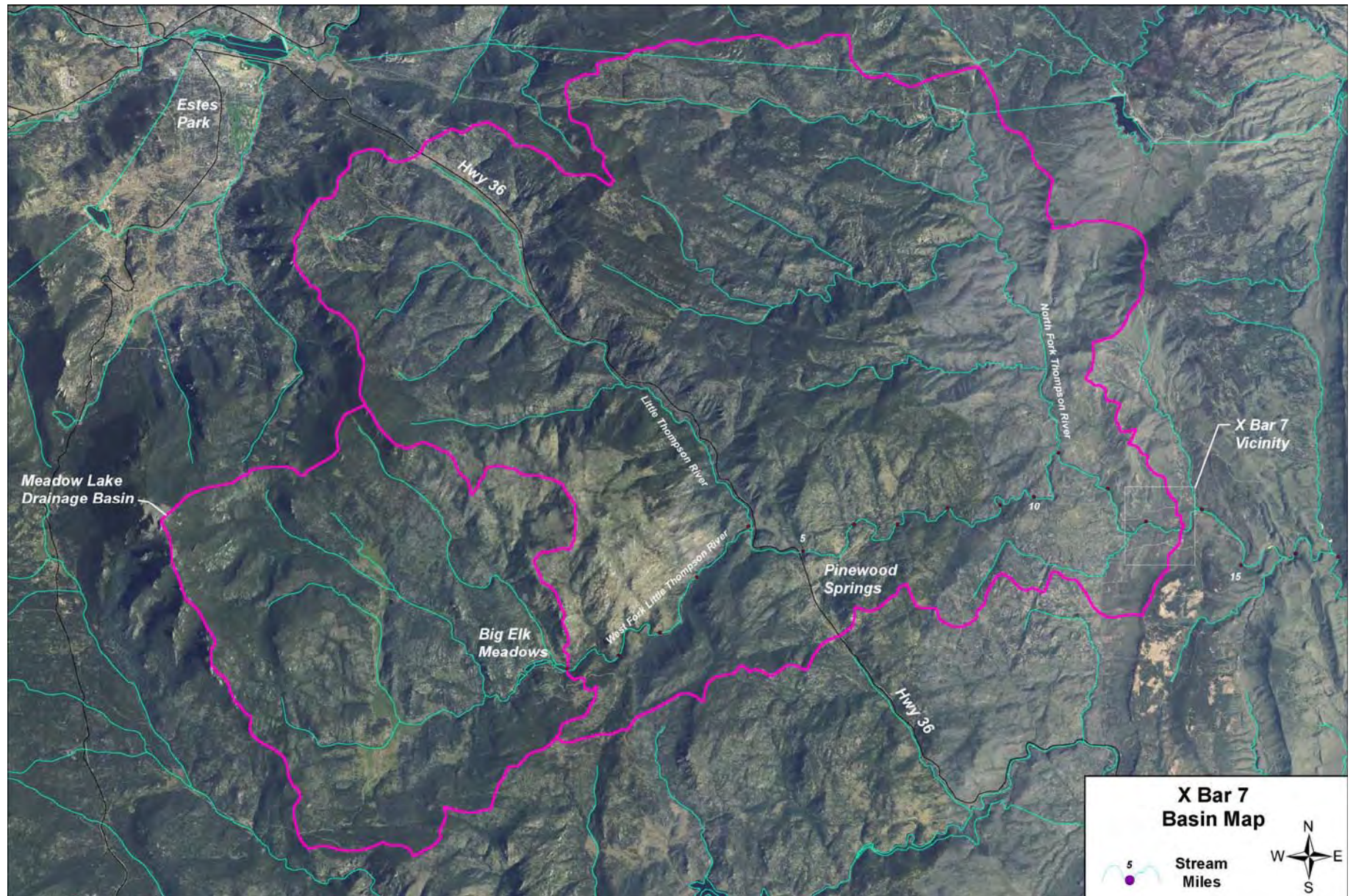
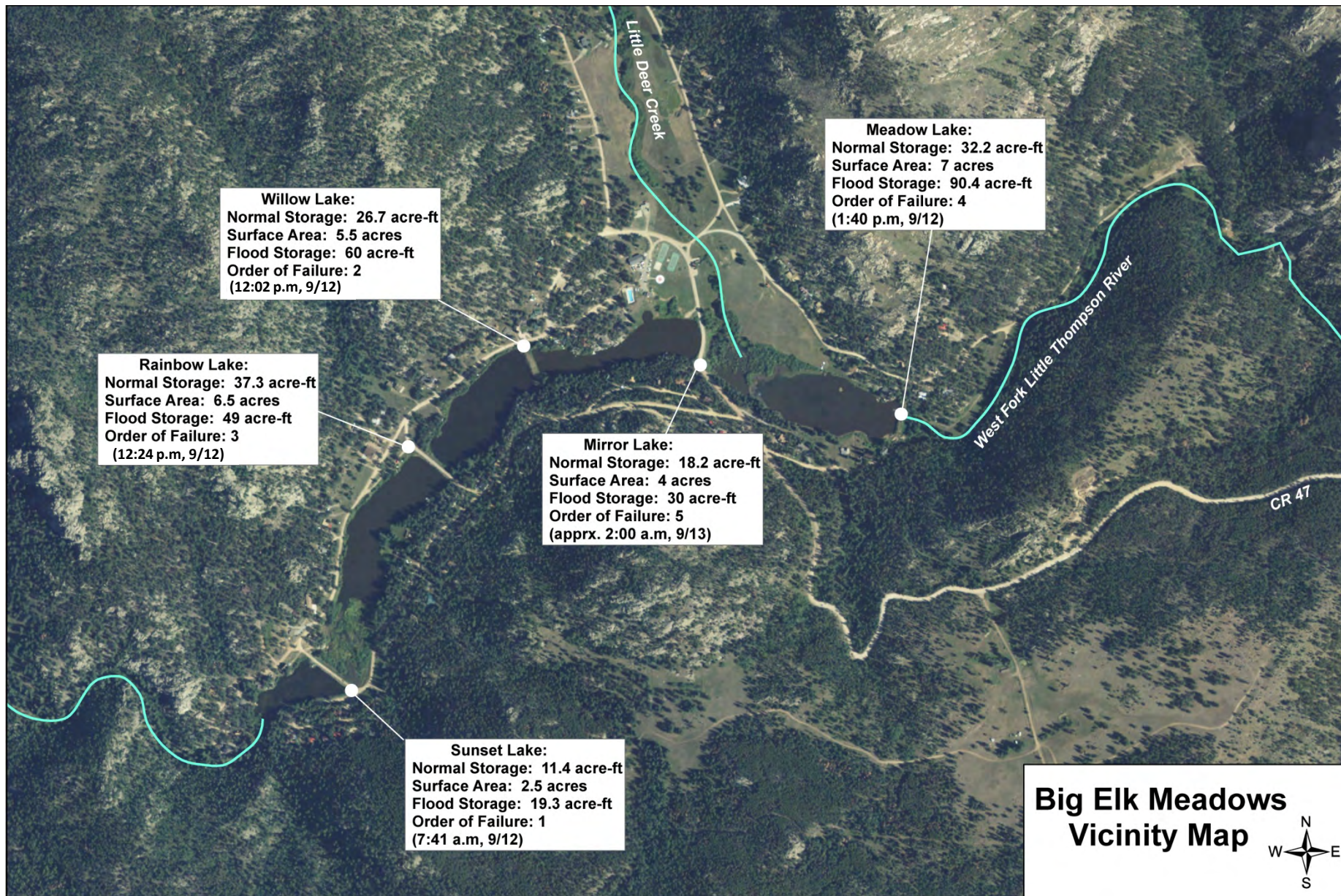
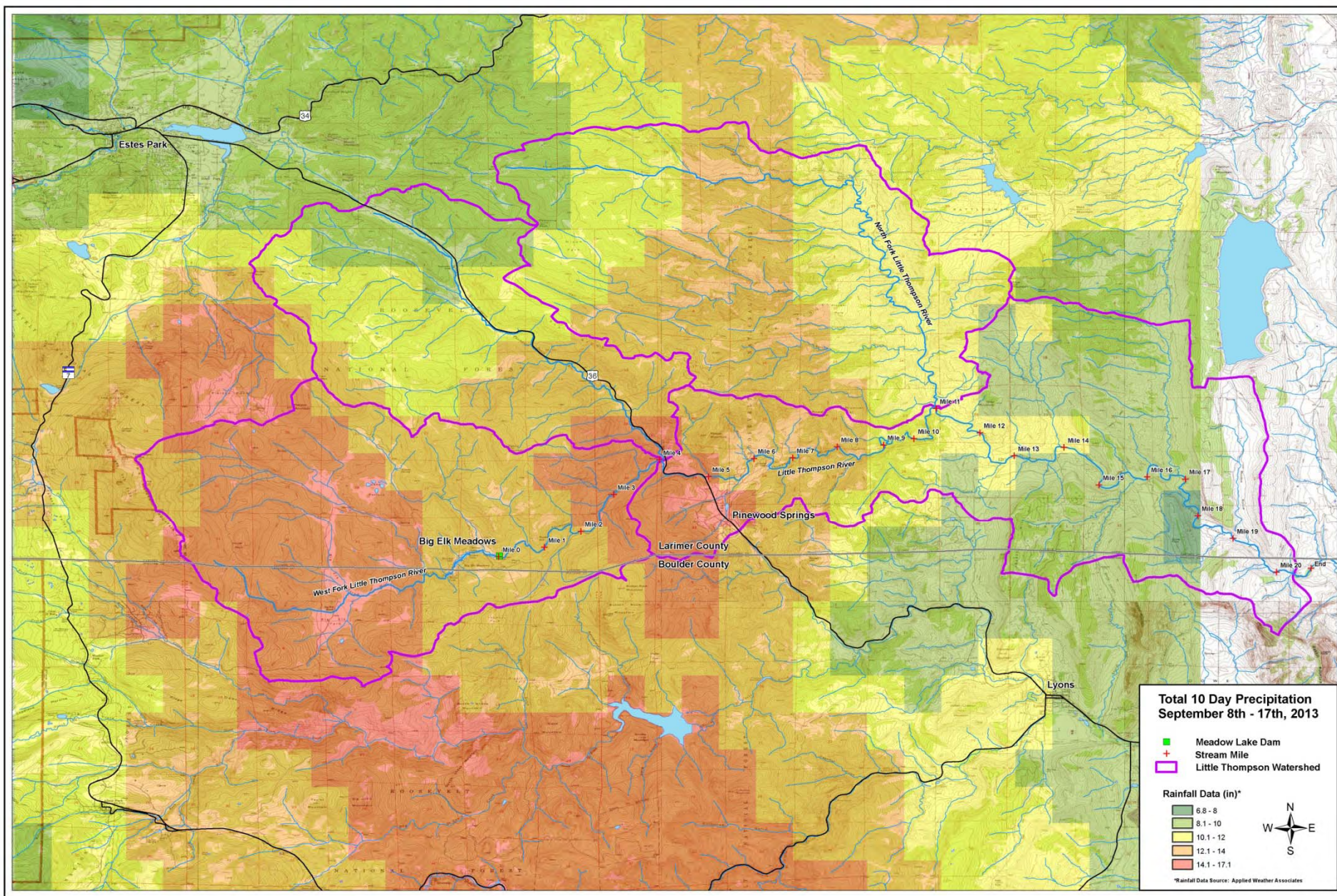


Public Meeting held
March 29, 2014
Lyons, CO

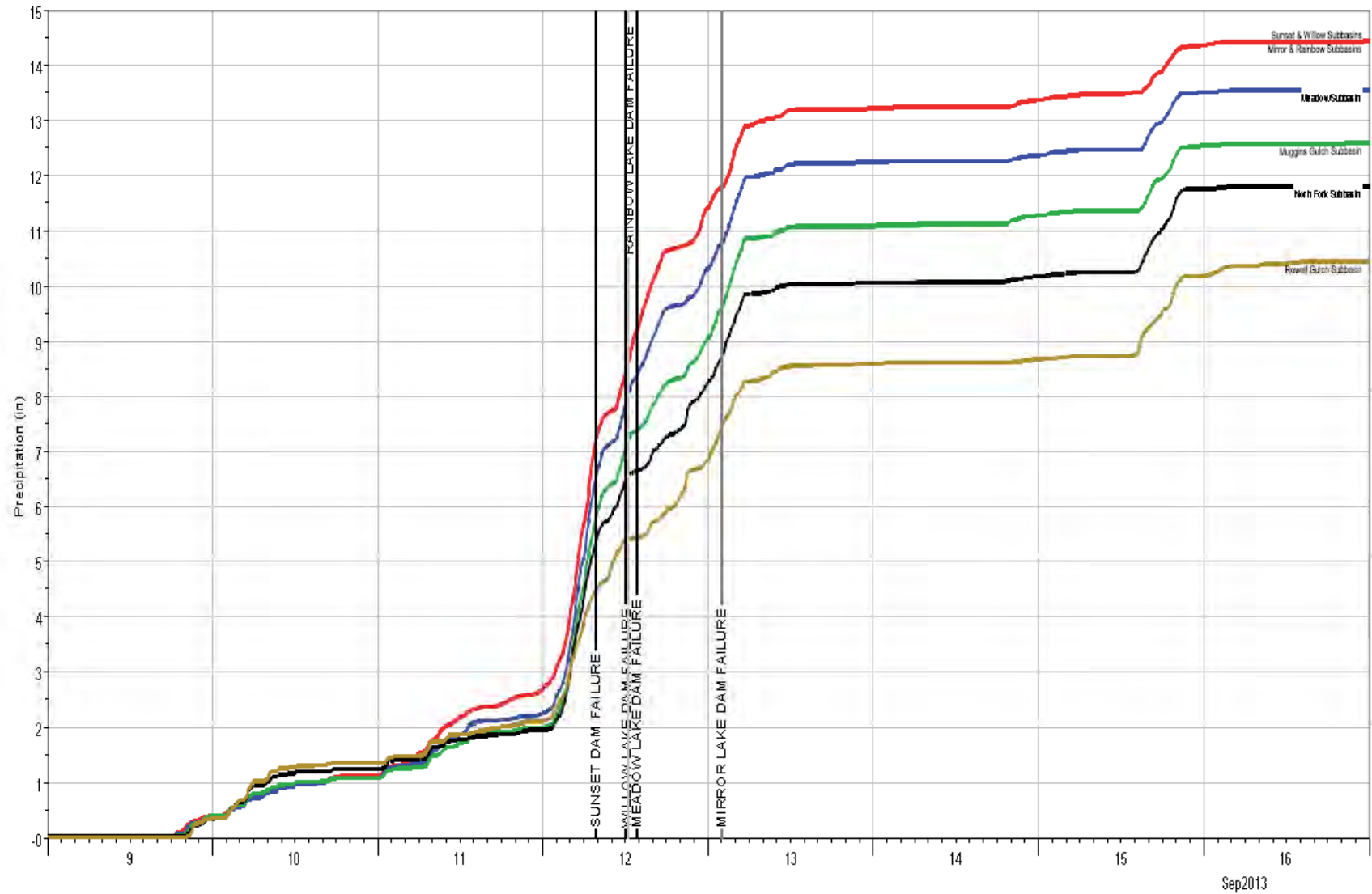
To discuss preliminary Analysis of the
Little Thompson River Watershed
and Big Elk Meadows Dams
during the September 2013 Flooding







LITTLE THOMPSON RIVER WATERSHED
SEPTEMBER 2013 STORM RAINFALL

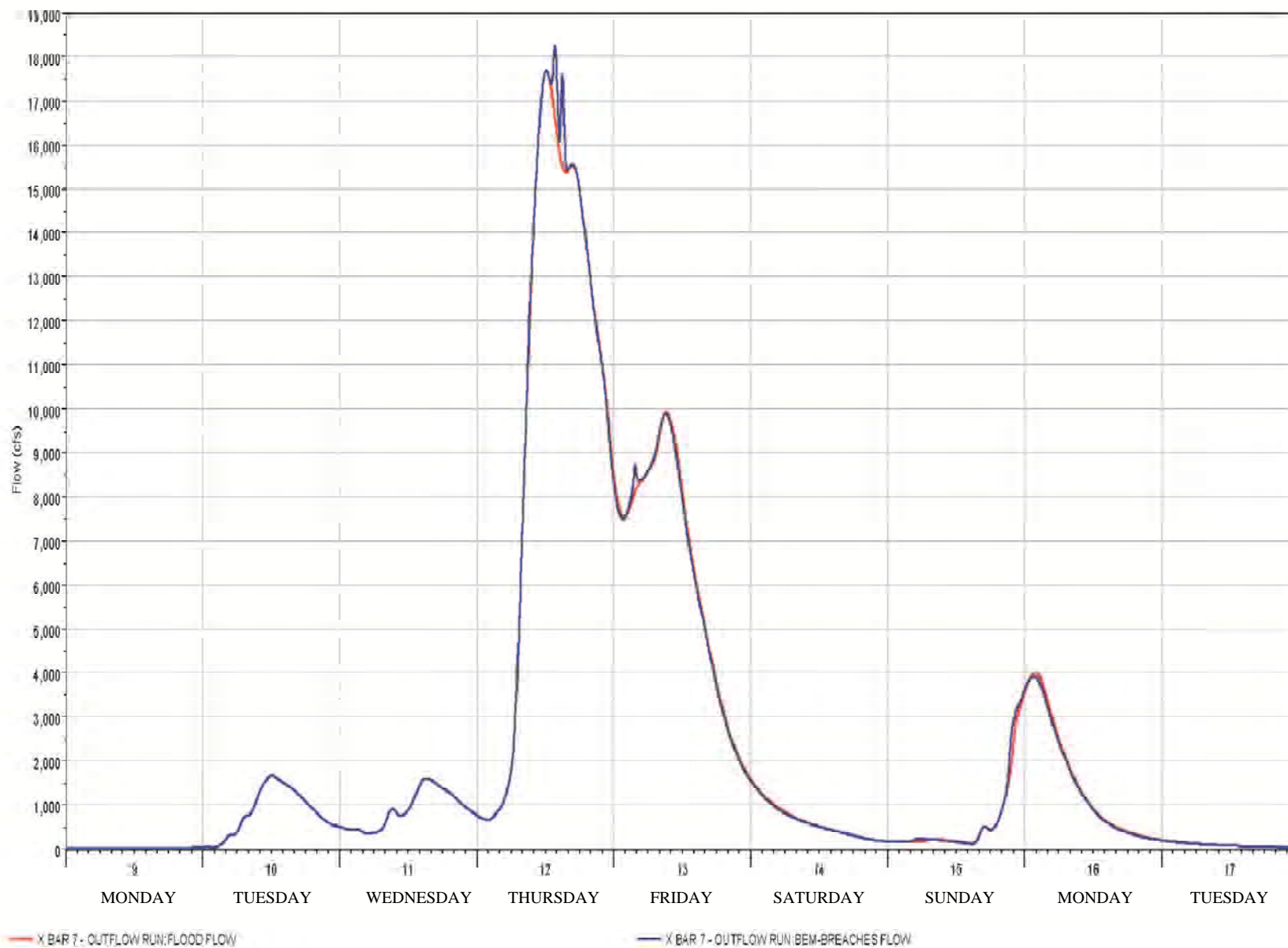


SEPTEMBER 9 - 16, 2013

— SUNSET_SUBBASIN RUN:FLOOD PRECIP-CUM — RAINBOW_SUBBASIN RUN:FLOOD PRECIP-CUM — WILLOW_SUBBASIN RUN:FLOOD PRECIP-CUM — MIRROR_SUBBASIN RUN:FLOOD PRECIP-CUM
 — MEADOW_SUBBASIN RUN:FLOOD PRECIP-CUM — MUGGINSGULCH_SUBBASIN RUN:FLOOD PRECIP-CUM — NORTH FORK_SUBBASIN RUN:FLOOD PRECIP-CUM — ROWELL GULCH_SUBBASIN RUN:FLOOD PRECIP-CUM

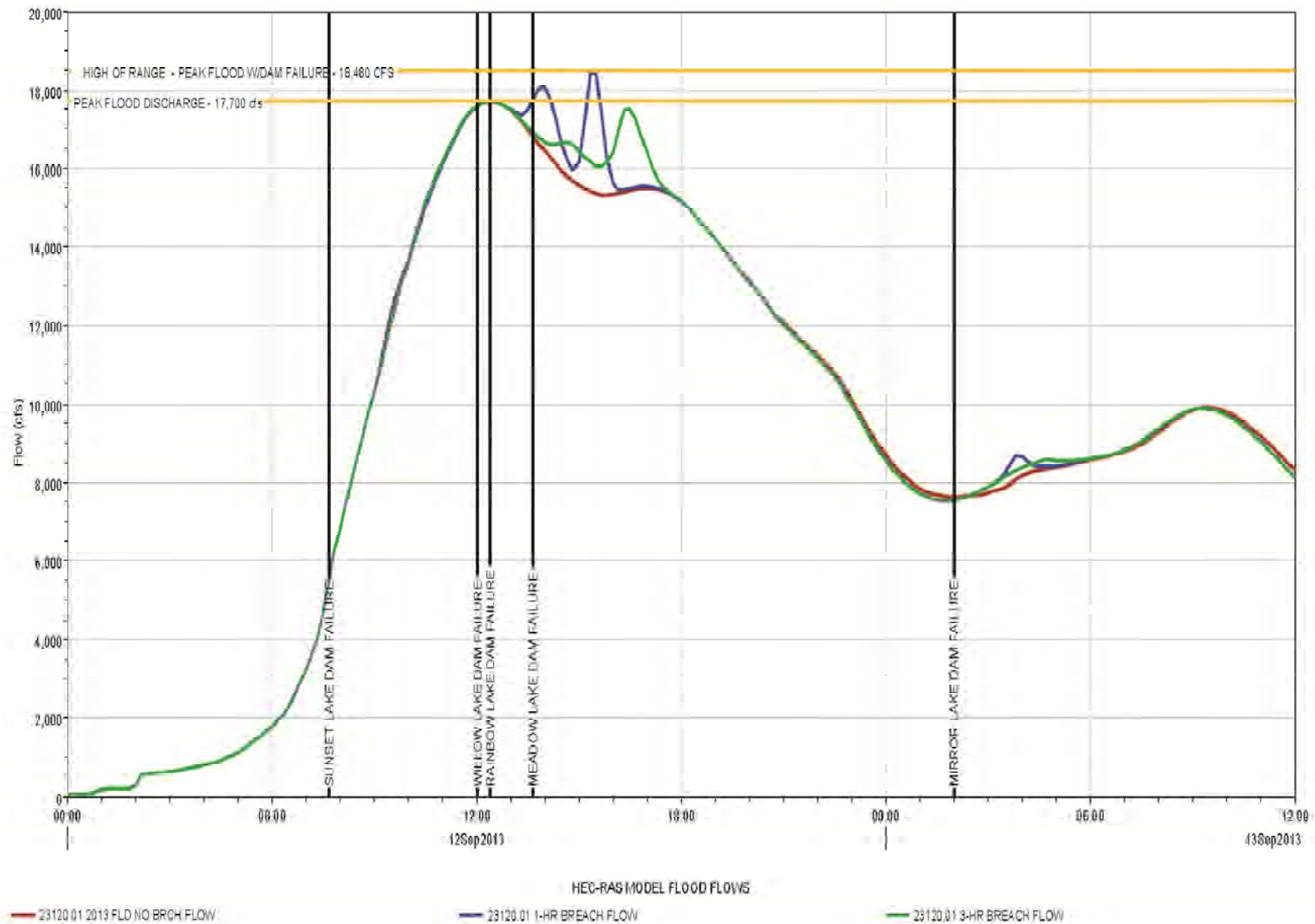
LITTLE THOMPSON RIVER WATERSHED SEPT 2013 STORM RUNOFF

PRELIMINARY



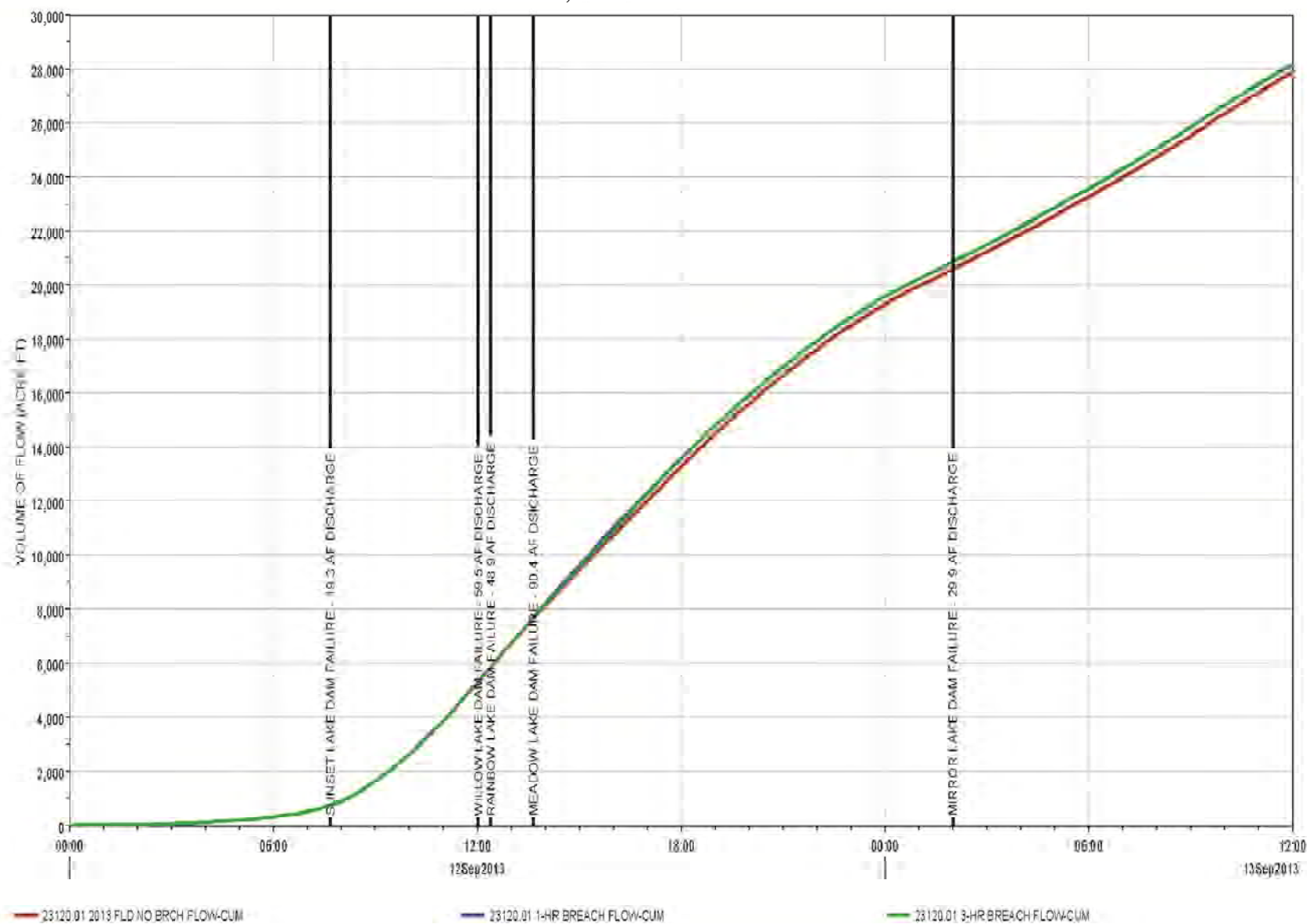
LITTLE THOMPSON RIVER WATERSHED
X BAR 7 RANCH CROSS-SECTION
SEPT 12-13, 2013 FLOW

PRELIMINARY



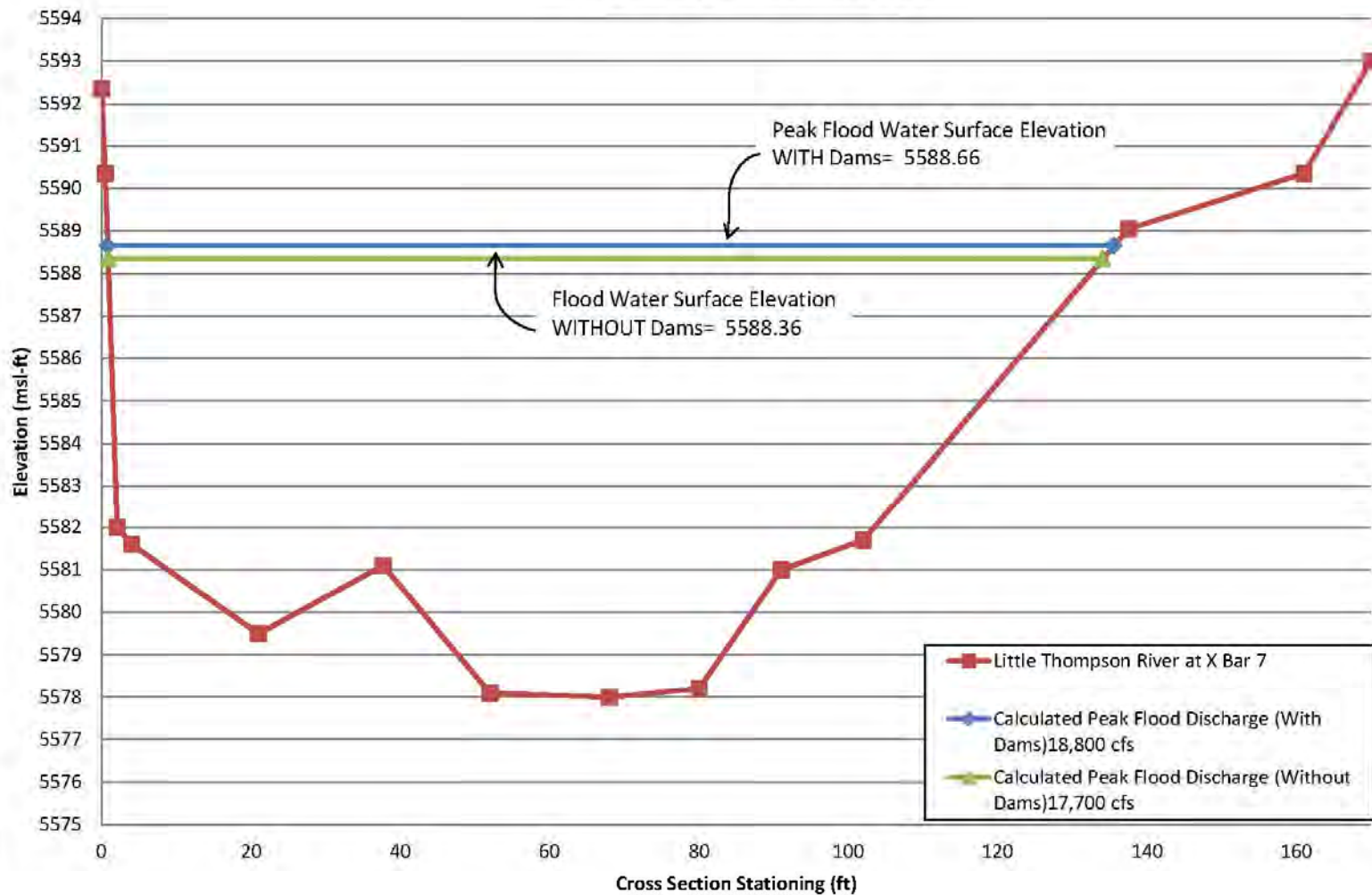
LITTLE THOMPSON RIVER WATERSHED X BAR 7 RANCH CROSS-SECTION SEPT 12-13, 2013 STORM VOLUME

PRELIMINARY



PRELIMINARY

Little Thompson River Cross Section Peak Flow Calculation



Mirror Dam 9/12/13 @ 7:09am



Mirror Dam 9/12/13 @ 12:46pm



Mirror Dam 9/12/13 @ 2:55pm





Willow Dam failing around the left end
9/12/13

Willow Dam 9/12/13 @11:36am

Water going
around left
end of dam





Meadow Lake Dam during failure
9/12/13 @ 1:40pm



Meadow Lake Dam during failure
9/12/13 @ 1:40pm