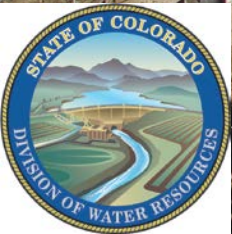


# CWCB/DWR LaSalle/Gilcrest Groundwater Investigation

Ralf Topper, CPG  
Sept. 9, 2014





Select

Suggested Sites Free Hotmail Web Slice Gallery Urban Legends Reference ...

e Groundwater Pilot Project

Page



# COLORADO

## Division of Water Resources

### Department of Natural Resources

[Home](#)[Ground Water](#)[Surface Water](#)[Data & Maps](#)[Documents & Forms](#)[Division Offices](#)[> Division Offices > Division 1 \(Greeley\) > Gilcrest/LaSalle Groundwater Pilot Project](#)

#### Division 1 (Greeley)

[Active Calls in Division 1](#)[Division 1 Events and Links](#)[Gilcrest/LaSalle Groundwater Pilot Project](#)[High Ground Water Issues in Sterling](#)

#### Division 2 (Pueblo)

#### Division 3 (Alamosa)

#### Division 4 (Montrose)

#### Division 5 (Glenwood Springs)

#### Division 6 (Steamboat Springs)

#### Division 7 (Durango)

## Gilcrest/LaSalle Groundwater Pilot Project

### Gilcrest/LaSalle High Groundwater Issues

**Updated August 15, 2014**

Landowners in the Gilcrest/LaSalle area have relayed their concerns about high groundwater levels to state officials. The DWR and CWCB are conducting an independent analysis of the groundwater hydrology in this area. The agencies have undertaken an effort to compile historical groundwater level data, monitor current groundwater levels and characterize the hydrogeology within the area of interest. The objective of this groundwater investigation is to identify relationships between the climate, geology, hydrology, and water management of the area and groundwater levels. Preliminary information and data obtained from this investigation is updated monthly and will be posted on this website for public access.

[Initial Presentation](#), held on January 24, 2013

[Presentation to South Platte Roundtable Groundwater Committee](#), held on July 9, 2013

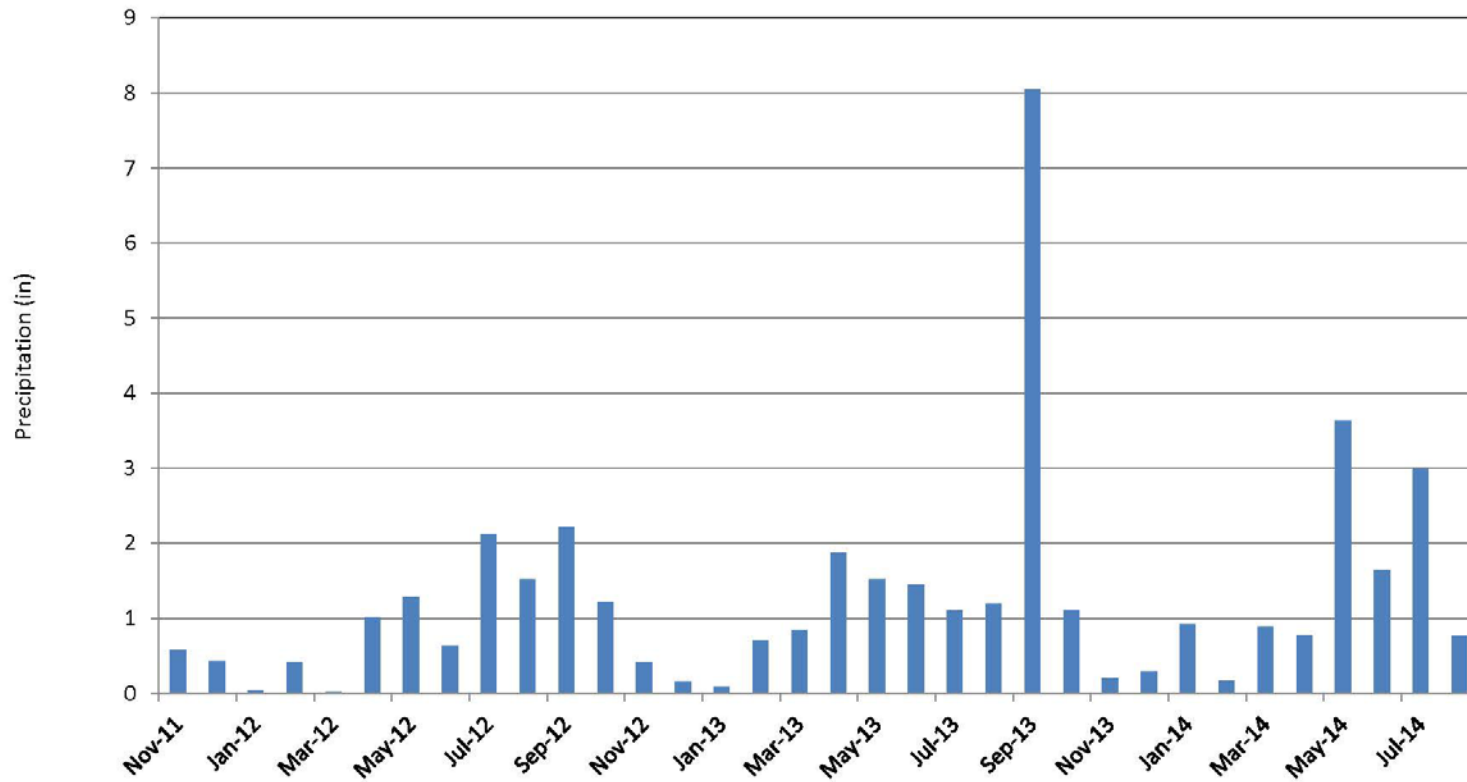
April 2014 [Climate Data](#)

April 2014 [Groundwater Level Data](#)

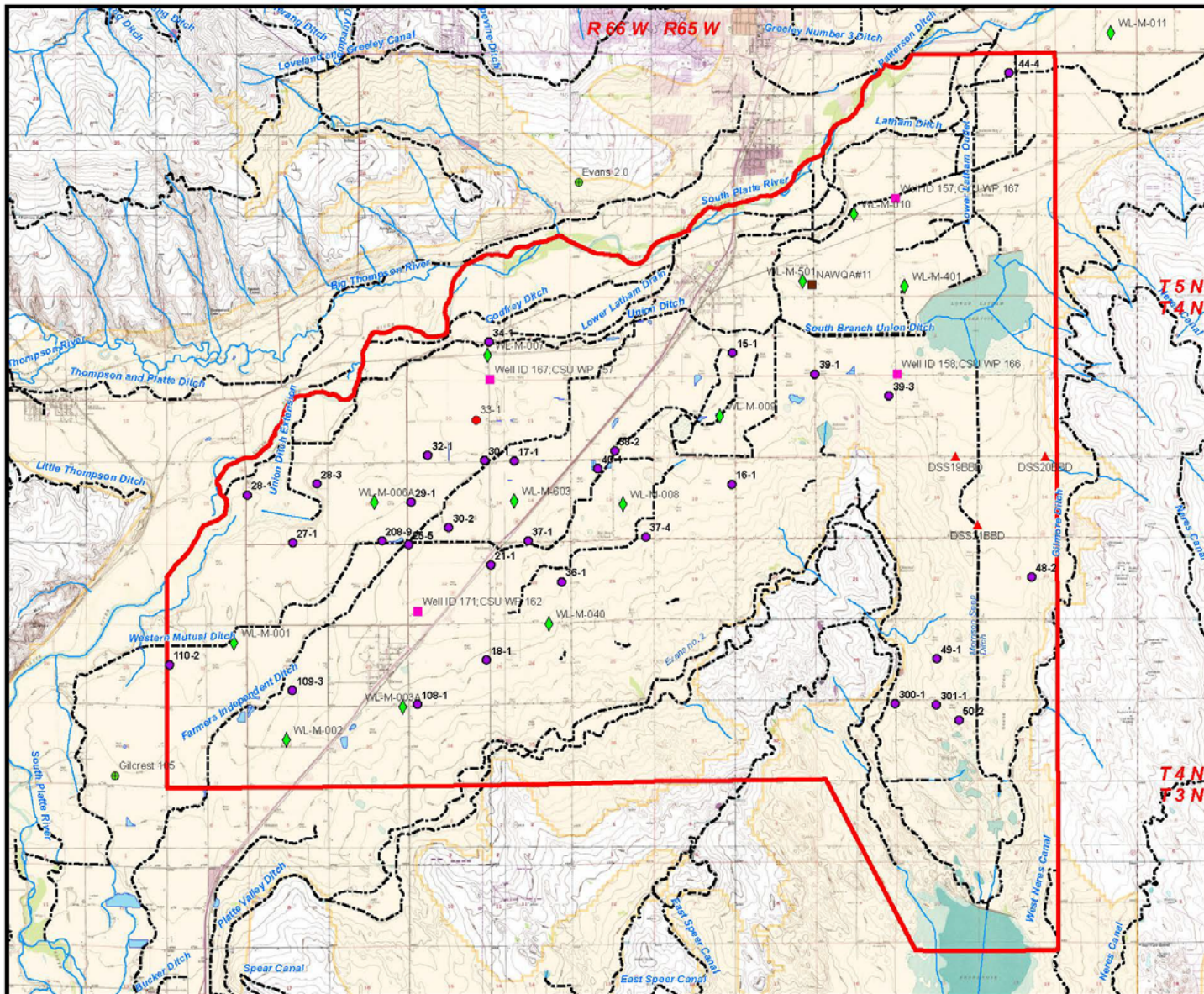
April 2014 [Recharge Data](#)

# Gilcrest-LaSalle Groundwater Project NCWCD Monthly Total Precipitation Graph

NCWCD Gilcrest 105 Station  
Period of Record: November 2011- August 2014







State of Colorado  
Division of Water Resources

**La Salle/Gilcrest  
Study Area**

- CSU 2005 wells with pre 1960 data
- ▲ DWR monitoring wells
- CCWCD inactive wells
- CCWCD Monitoring Wells
- USGS Active monitoring sites
- ◆ CDA monitoring sites
- Climate Stations
- Recharge
- Study boundary
- Extent of Alluvium
- Canal/Ditch
- Stream/River

**47 Total Wells Measured**



0 0.5 1 2 Miles

Printed July 2013














## Gilcrest/LaSalle Pilot Project Hydrogeologic Characterization Report

### Legend

-  StudyBoundary
-  Extent of saturated alluvium

### Depth to Groundwater

feet from surface

-  < 0.5
-  0.5 - 5
-  5 - 10
-  10 - 15
-  > 15

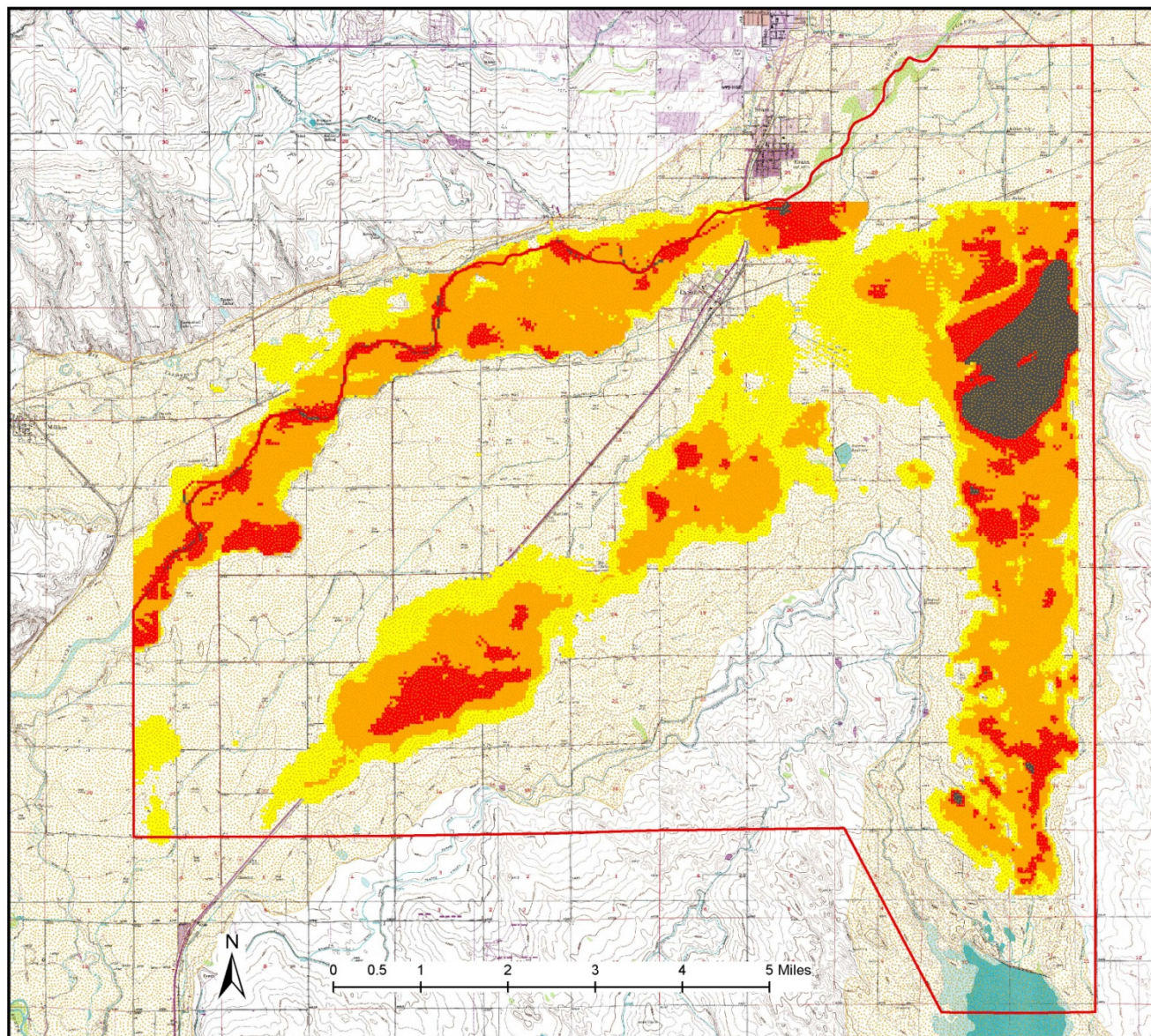


Figure 18  
Depth to Groundwater Map  
for Spring 2012



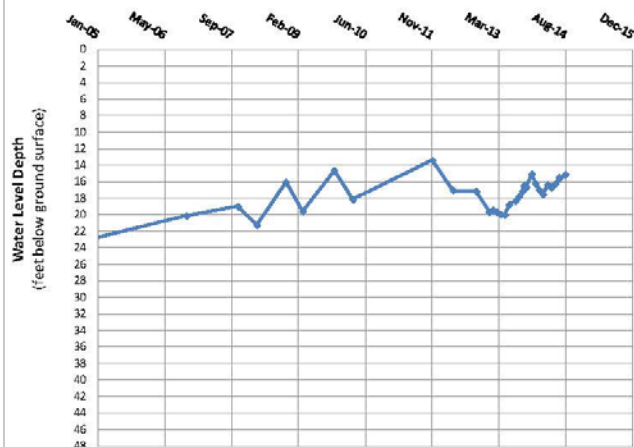


Period of Record  
2005 thru 2014

### LaSalle-Gilcrest Groundwater Project

Water Well Groundwater Level

CCWCD Well: 40-1

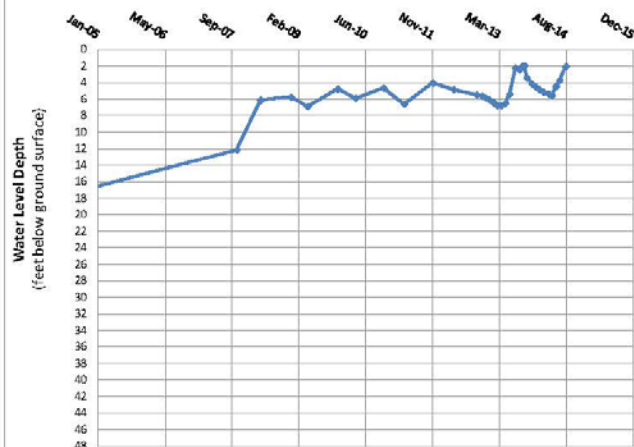


Period of Record  
2005 thru 2014

### LaSalle-Gilcrest Groundwater Project

Water Well Groundwater Level

CCWCD Well: 108-1

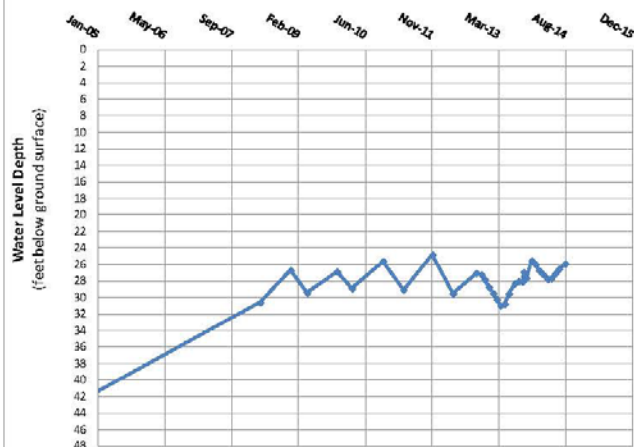


Period of Record  
2005 thru 2014

### LaSalle-Gilcrest Groundwater Project

Water Well Groundwater Level

CCWCD Well: 109-3

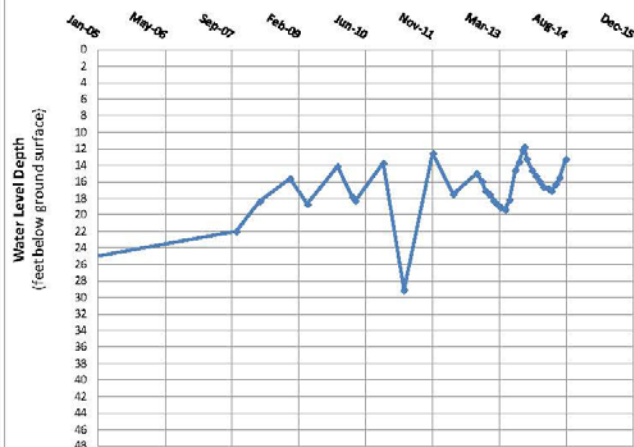


Period of Record  
2005 thru 2014

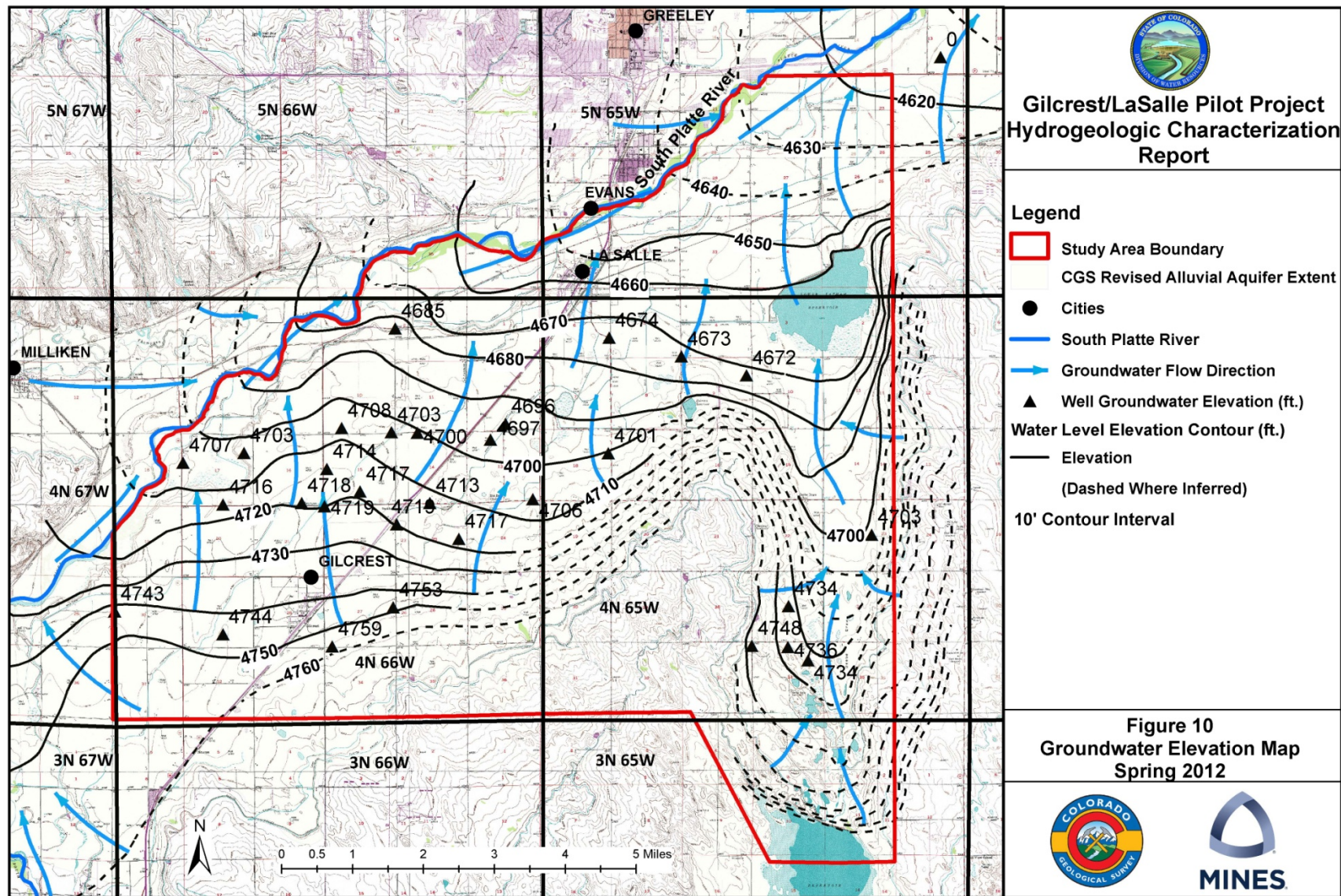
### LaSalle-Gilcrest Groundwater Project

Water Well Groundwater Level

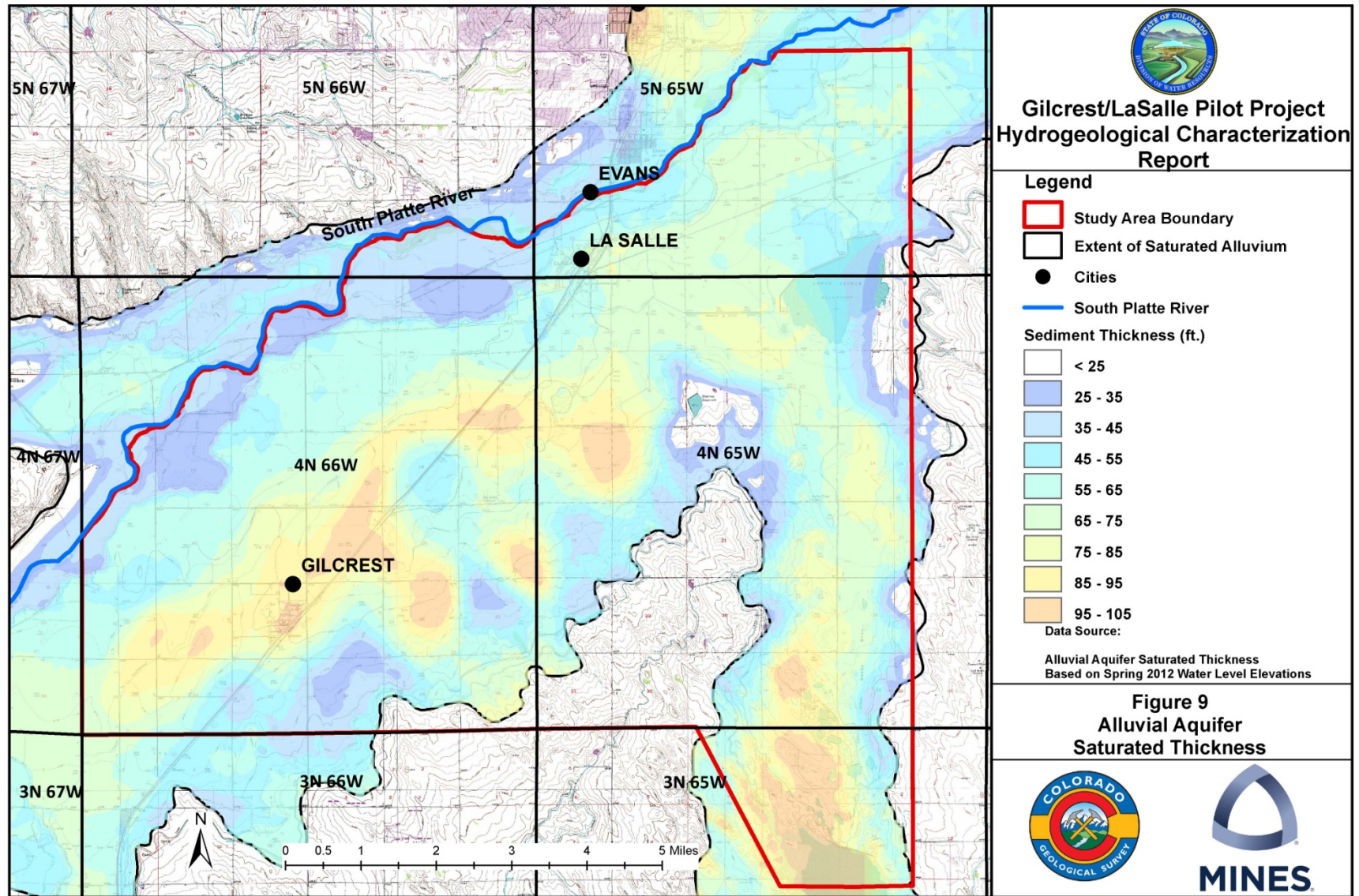
CCWCD Well: 110-2







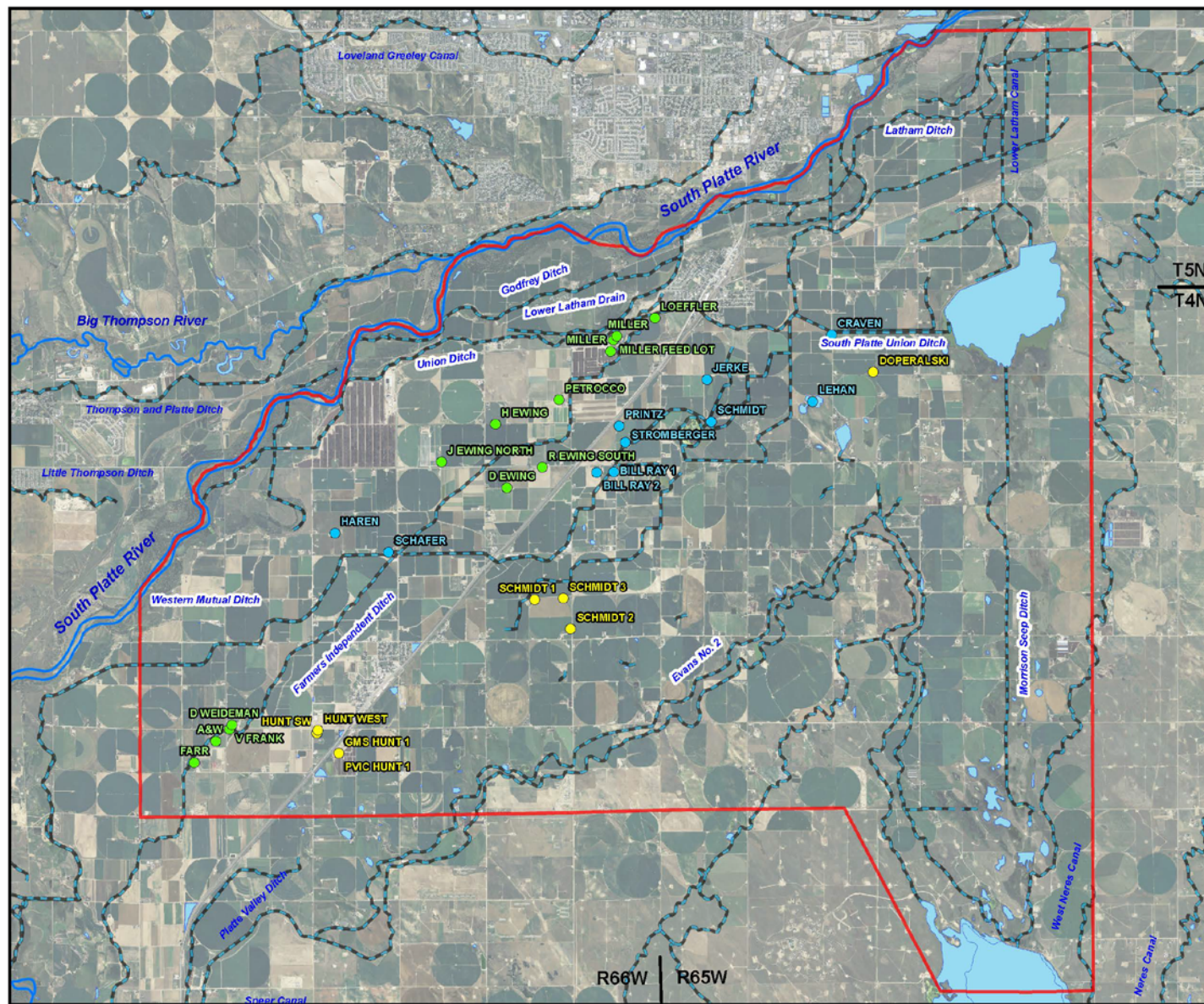






State of Colorado  
Division of Water Resources

# LaSalle/Gilcrest High Groundwater Investigation



## Map Key

- Study Boundary
- Reservoirs/Lakes/Ponds
- Rivers
- Ditches and Canals
- Recharge Pond by Ditch System**
  - Western Mutual Ditch
  - Evans No. 2 Ditch
  - Farmers Independent Ditch



0 0.5 1 2 Miles

Printed August 15, 2014

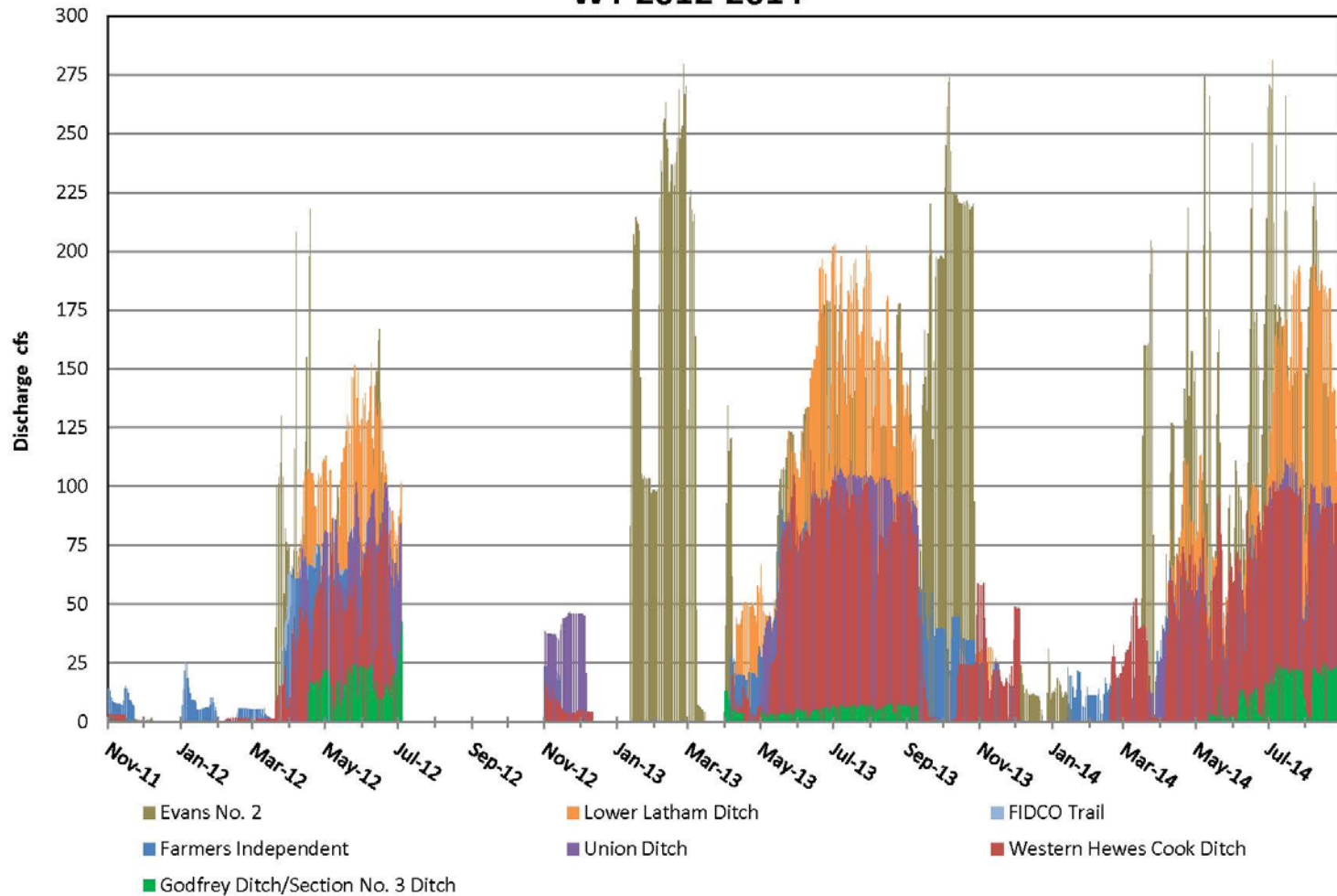
Author: RT  
NAD 1983 UTM Zone 13N  
Transverse Mercator  
North American 1983  
Scale 1:70,000



**COLORADO**  
Division of Water Resources  
Department of Natural Resources



## Ditch Diversions at Head Gates in LaSalle-Gilcrest Area WY 2012-2014



Data Provided by the Division of Water Resources  
Project Funded by Colorado Water Conservation Board



A wide river flows through a landscape with sandy banks and bare trees. The sky is blue with some clouds. The river has several sandbars and small islands. The trees are mostly without leaves, suggesting a cooler season. The water is a deep blue color.

Thanks for your attention  
- Questions?

Ralf Topper  
(303) 866-3581 x8227  
[ralf.topper@state.co.us](mailto:ralf.topper@state.co.us)