




COLORADO DIVISION OF RECLAMATION, MINING AND SAFETY COAL PROGRAM INSPECTION REPORT



PERMIT INFORMATION

Permit Number: C-1981-035 Mine Name: King Coal Mine Operator: GCC Energy, LLC Operator Address: Mr. Tom Bird 6473 County Road 120 Hesperus, CO 81326	County: La Plata Operation Type: Underground Permit Status: Active Ownership: Federal
	Operator Representative Present: None (Aerial Inspection)
Operator Representative Signature: (Field Issuance Only) This report was issued electronically from the Division's Durango Field Office.	

INSPECTION INFORMATION

Inspection Start Date: July 23, 2013 Inspection Start Time: 13:40 Inspection End Date: July 23, 2013 Inspection End Time: 13:42		Inspection Type: Aerial Inspection Inspection Reason: Normal I&E Program Weather: Cloudy	
Joint Inspection Agency: None		Joint Inspection Contacts:	
Post Inspection Agency: None		Post Inspection Contacts:	
Inspector(s): Marcia L. Talvitie, P.E.	Inspector's Signature: 		Signature Date: 29 July 2013

Inspection Topic Summary

NOTE: **Y**=Inspected **N**=Not Inspected **R**=Comments Noted
 V=Violation Issued **NA**=Not Applicable

N - Air Resource Protection	Y - Roads
N - Availability of Records	N - Reclamation Success
N - Backfill & Grading	N - Revegetation
R - Excess Spoil and Dev. Waste	N - Subsidence
NA - Explosives	Y - Slides and Other Damage
N - Fish & Wildlife	R - Support Facilities On-site
R - Hydrologic Balance	N - Signs and Markers
N - Gen. Compliance With Mine Plan	NA - Support Facilities Not On-site
N - Other	NA - Special Categories Of Mining
NA - Processing Waste	R - Topsoil

COMMENTS

An aerial inspection of the King Coal Mine was conducted by Division personnel in July 2013. Photos were taken by Harry Ranney on Tuesday, July 23, 2013, and were later analyzed and annotated by Marcia Talvitie.

EXCESS SPOIL and DEVELOPMENT WASTE – Rule 4.09

Placement; Drainage Control; Surface Stabilization:

- Coal mine waste (CMW) from the King I, and now the King II mines is approved for permanent disposal in a valley fill refuse pile at the King I surface facilities.
- It appears that all of the CMW hauled to the top of the refuse pile has been distributed and compacted. A number of dumped loads of CMW could be seen in the former yard area, below.
- Soil material generated during the 2012 placement and compaction campaign was stored in the valley, up-gradient of the refuse pile.
- It appears that the clear water diversion ditch is in place, and functional

HYDROLOGIC BALANCE - Rule 4.05

Drainage Control 4.05.1, 4.05.2, 4.05.3; Siltation Structures 4.05.5, 4.05.6; Discharge Structures 4.05.7, 4.05.10; Diversions 4.05.4; Effluent Limits 4.05.2; Ground Water Monitoring 4.05.13; Surface Water Monitoring 4.05.13; Drainage – Acid and Toxic Materials 4.05.8; Impoundments 4.05.6, 4.05.9; Stream Buffer Zones 4.05.18:

- The area appears to have been receiving some rain recently, as evidenced by the water present in the King I West and East Sedimentaion Ponds and a small amount in the King II Sedimentation Pond.

SUPPORT FACILITIES - Rule 4.04:

- The King II surface facilities appear neat and in order.
- Substantial progress has been made in the construction of the new office / bath house building.
- A number of highway haul trucks were lined up at King II, waiting to be loaded at the scale.

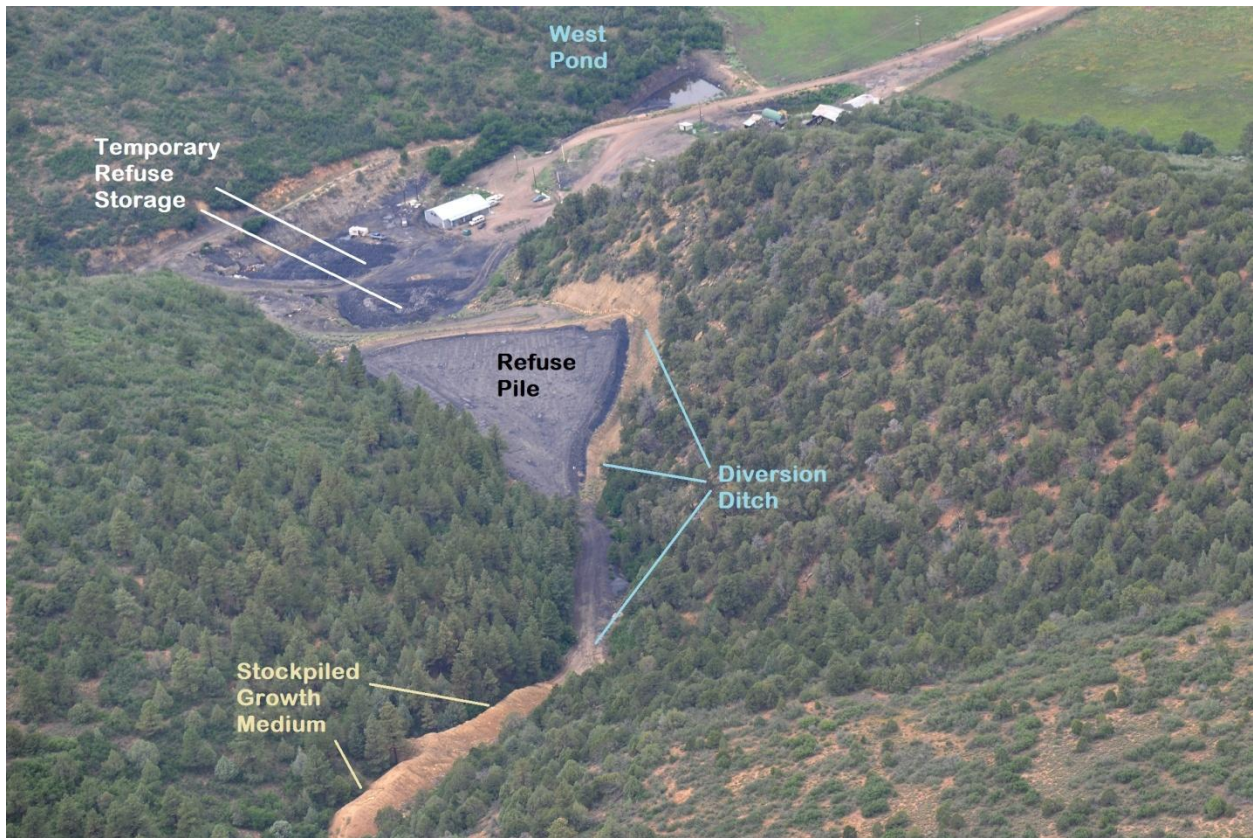
TOPSOIL – Rule 4.06

Removal 4.06.2; Substitute Materials 4.06.4(4); Storage and Protection 4.06.3; Redistribution 4.06.4:

- Two topsoil stockpiles have been constructed at King II: a small pile between the sediment pond and the haul road, and a larger pile in the eastern tributary valley.

ENFORCEMENT ACTIONS/COMPLIANCE

No enforcement actions were issued as a result of this inspection, and none are pending.



King I Refuse Pile, looking west



King I Refuse Pile, looking east

Number of Partial Inspection this Fiscal Year: 1

Number of Complete Inspections this Fiscal Year: 0



King I surface facilities



King II pond and haul road

Number of Partial Inspection this Fiscal Year: 1

Number of Complete Inspections this Fiscal Year: 0



King II surface facilities, looking North

Number of Partial Inspection this Fiscal Year: 1Number of Complete Inspections this Fiscal Year: 0