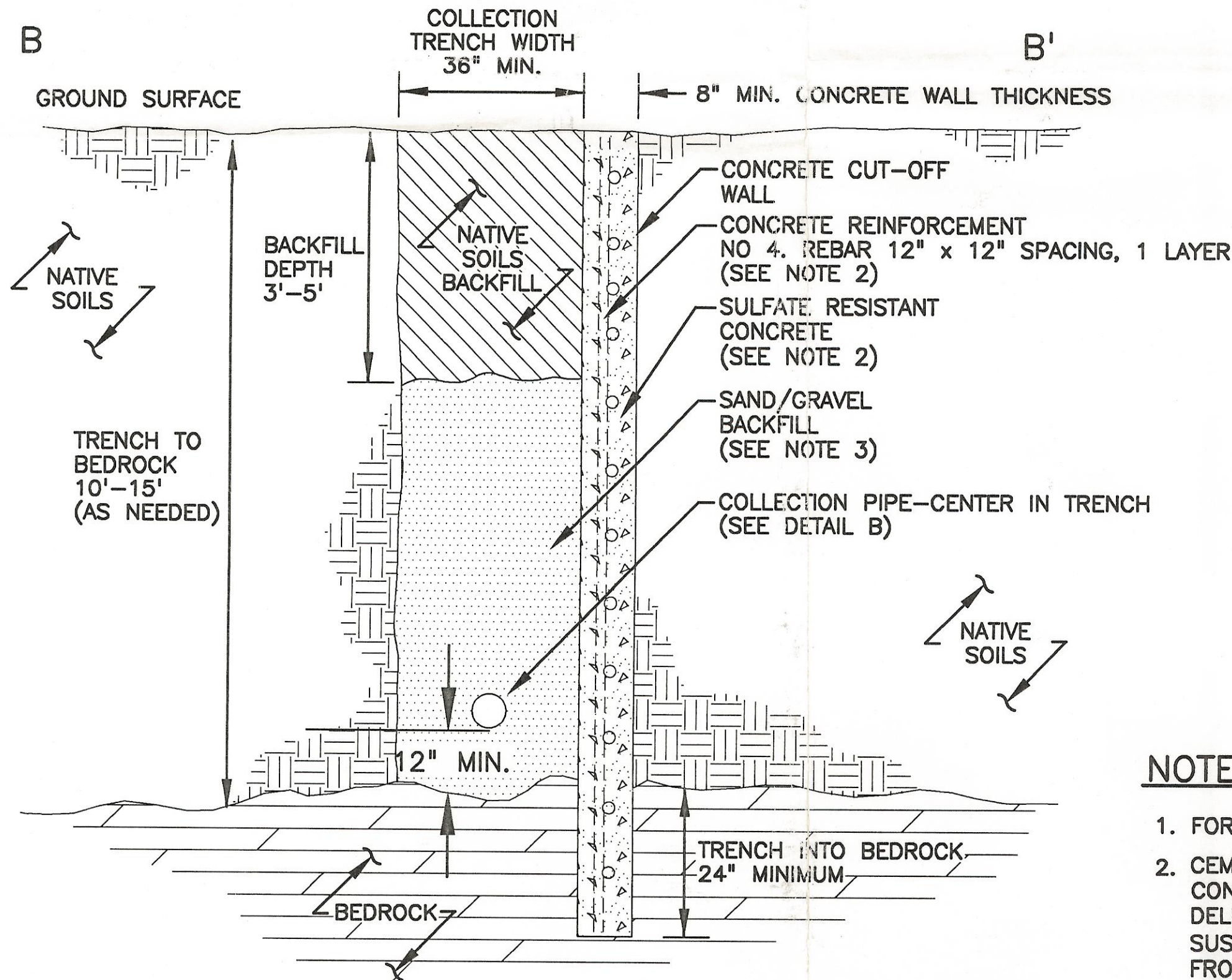
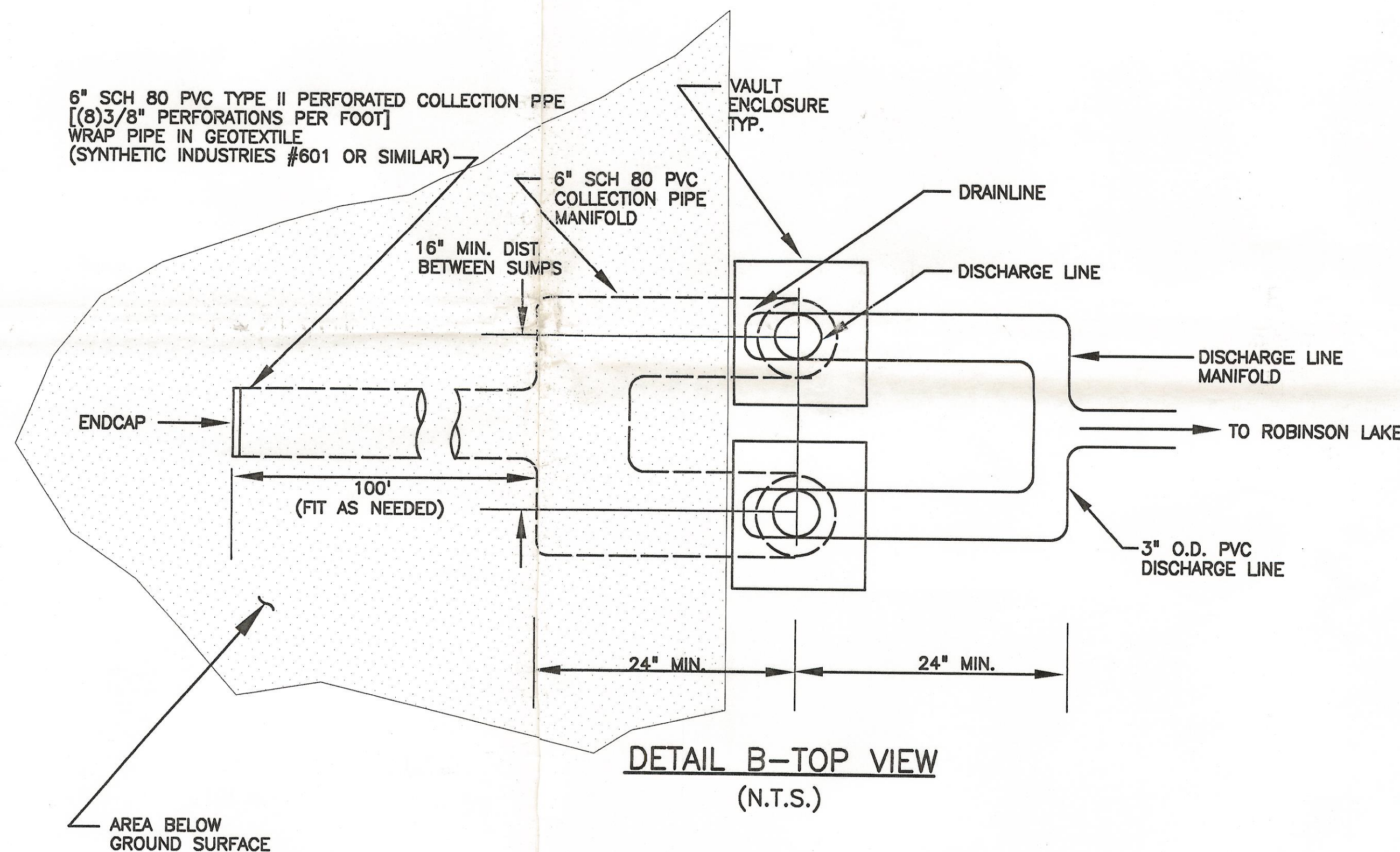


CROSS SECTION A-A'
ROBINSON LAKE DRAIN SCHEMATIC



CROSS SECTION B-B'
(N.T.S.)

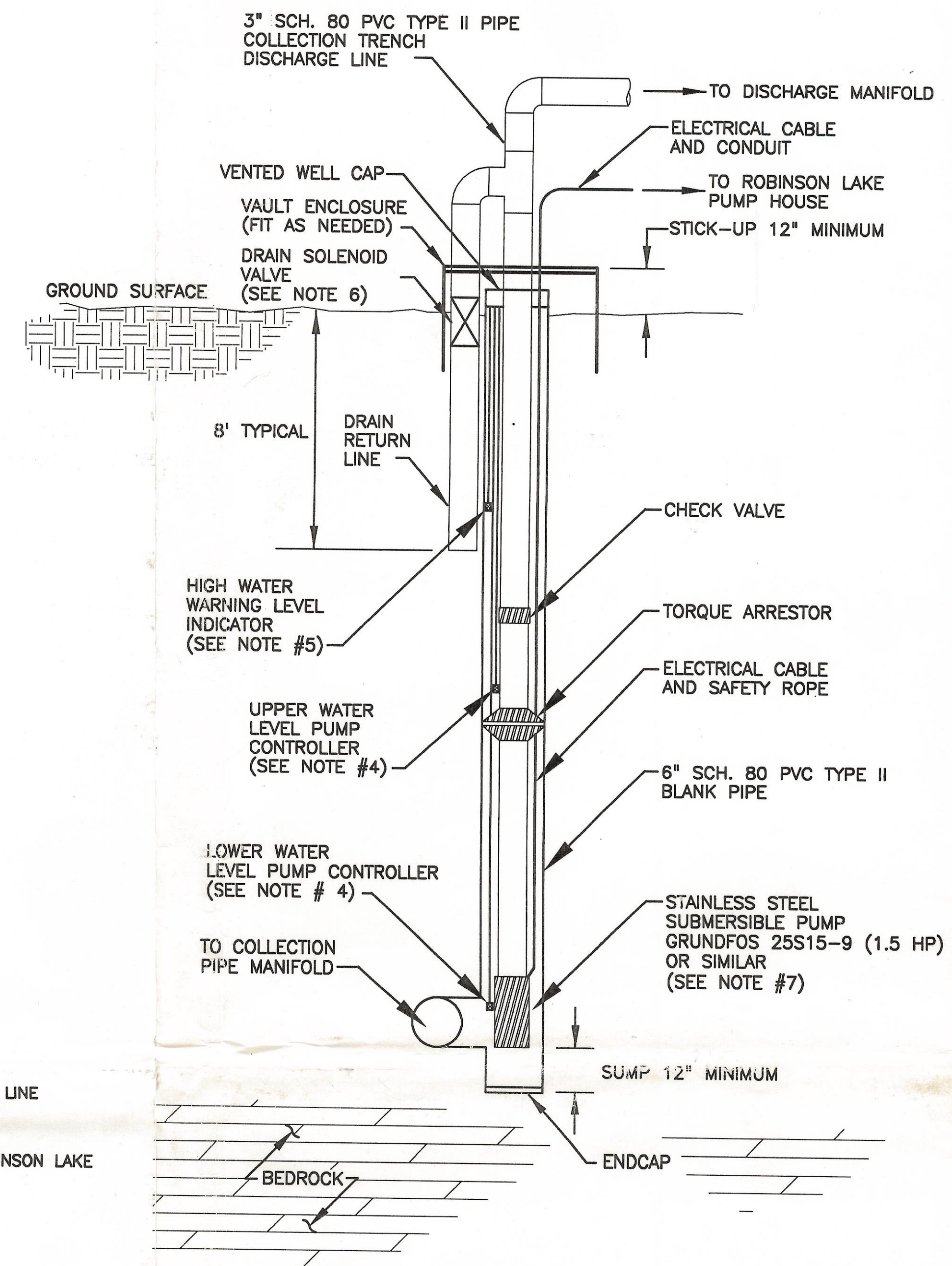


DETAIL B-TOP VIEW
(N.T.S.)

NOTES:

- FOR CROSS SECTION LOCATIONS SEE FIGURE 1.
- CEMENT SHALL BE AN APPROVED BRAND OF PORTLAND CEMENT COMPLYING WITH ALL THE REQUIREMENTS OF ASTM C 150, TYPE I. CONCRETE AGGREGATES SHALL BE CLEAN AND FREE OF OILS, ACIDS, SALTS, ALKALIS, ORGANIC MATERIALS OR OTHER SUBSTANCES DELETERIOUS TO CONCRETE. CONCRETE AGGREGATES SHALL CONFORM TO ASTM C 33. WATER SHALL CONTAIN NO MORE THAN 2,000 PPM SUSPENDED SOLIDS. THE CONTRACTOR SHALL SUPPLY THE REINFORCING BARS. THE REINFORCEMENT AND ACCESSORIES SHALL BE FREE FROM RUST, SCALE, GREASE, CLAY, AND OTHER COATINGS OR FOREIGN SUBSTANCES WHICH WOULD REDUCE THE BONDING CAPABILITIES. CHANGE OR ADDITIONS OF CONCRETE SPECIFIED MAY BE MADE ONLY WITH PRIOR WRITTEN AUTHORIZATION OF THE ENGINEER.
- BACKFILL GRADATION:

SIEVE SIZE	PERCENT RETAINED
3/4"	0-8
3/8"	18-34
#4	74-90
#8	92-100
- WATER LEVEL CONTROLLER POSITIONS (HIGH AND LOW) SHALL BE DETERMINED BASED ON FIELD CONDITIONS (I.E. GROUND WATER LEVEL IN TRENCH).
- HIGH WATER WARNING LEVEL INDICATOR SHALL BE POSITIONED BASED ON FIELD CONDITIONS.
- NORMALLY-OPEN, 2 WAY SOLENOID VALVE WITH 1.5" NPT.
- SUBMERSIBLE PUMP POSITION SHALL BE DETERMINED BASED ON FIELD CONDITIONS AND GROUND WATER LEVEL IN TRENCH. PUMP OPERATION TO BE CONTROLLED BY HIGH/LOW WATER LEVEL CONTROLLERS.
- ALL ELECTRICAL COMPONENTS TO BE SUPPLIED BY CLIMAX.



DETAIL A-SINGLE SUMP DETAIL
(N.T.S.)

RECEIVED
OCT 17 1995

Division of Minerals & Geology



ROBINSON LAKE
PUMP-BACK
CONVEYANCE SYSTEM
CLIMAX MINE
PREPARED FOR

CLIMAX MOLYBDENUM CO.
CLIMAX, COLORADO

TitanEnvironmental

DATE: 9-29-95	FIGURE 2	DRAWING NUMBER 5116-E2
SCALE: AS SHOWN		

ISSUED FOR CONSTRUCTION	P.R.T.		
DATE	ISSUE / REVISION	DWN. BY	CK'D BY AP'D BY