

LAND SURVEY PLAT

MCKENNA LIMESTONE QUARRY
HUERFANO COUNTY, COLORADO

LEGAL DESCRIPTION:

A parcel of land in the West Half of Section 31, Township 27 South, Range 64 West, Sixth Principal Meridian, Huerfano County, Colorado being more particularly described as follows:


Beginning at a point in the West 1/2 of Section 31, Township 27 South, Range 64 West, 6th Principal Meridian, from which the northwest corner of said Section 31, (a 1921 GLO Brass Cap) bears N 34° 17' 41" W, a distance of 2834.36 feet and the southwest corner of said Section 31 (a 1921 GLO Brass Cap) bears S 26° 52' 37" W, a distance of 3330.85 feet; thence S 09° 16' 51" W, a distance of 297.15 feet to the north bank of a wash; thence continuing along the north bank of said wash, the following five (5) courses: 1) S 68° 21' 02" E, a distance of 51.23 feet. 2) S 85° 53' 21" E, a distance of 39.10 feet. 3) S 85° 41' 01" E, a distance of 41.26 feet. 4) S 75° 02' 42" E, a distance of 62.41 feet. 5) S 30° 06' 14" E, a distance of 56.81 feet; thence S 86° 08' 43" E, a distance of 312.70 feet; thence N 88° 37' 19" E, a distance of 350.08 feet; thence N 00° 06' 04" W, a distance of 525.71 feet; thence S 81° 06' 34" W, a distance of 839.76 feet to the Point of Beginning, containing 8.70 Acres, more or less.

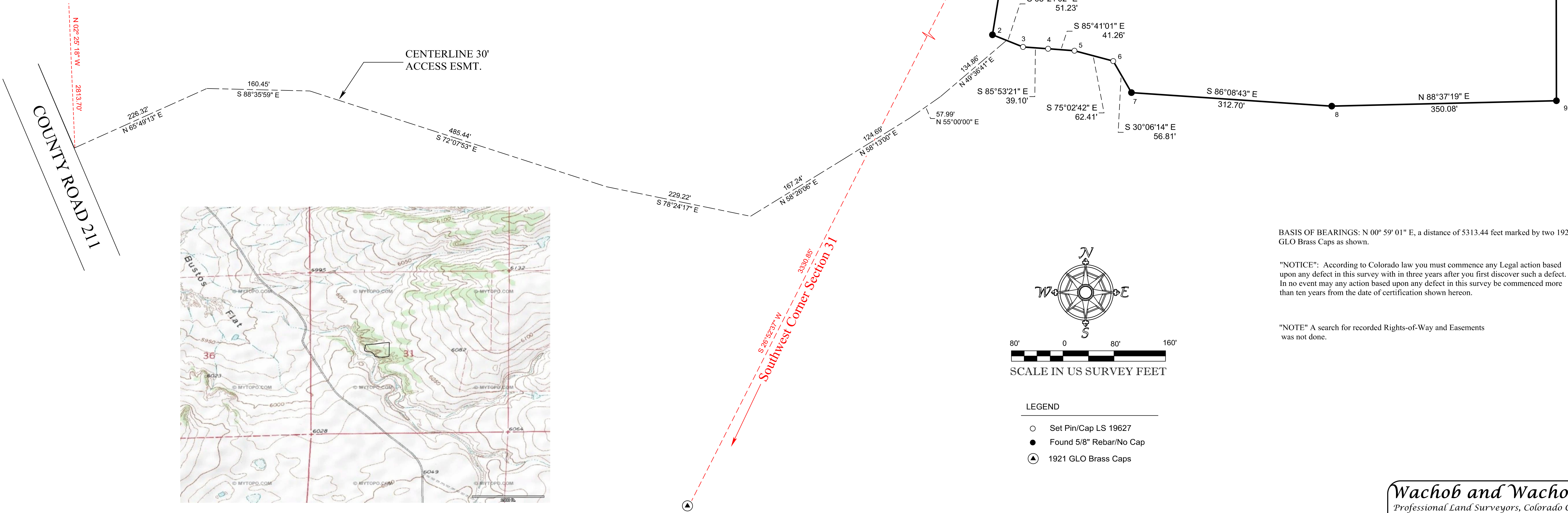
Together with a thirty (30) foot wide access easement, the centerline of which is more particularly described as follows:

Beginning at a point in the North 1/2 of the Southwest 1/4 of Section 31, Township 27 South, Range 64 West, of the 6th Principal Meridian on the east edge of County Road 211 (as built) from which the northwest corner of said Section 31 bears N 02° 25' 18" W, a distance of 2813.70 feet and the southwest corner of said Section 31 bears S 00° 38' 01" W, a distance of 2501.61 feet; thence N 65° 49' 13" E, a distance of 226.32 feet; thence S 88° 35' 59" E, a distance of 160.45 feet; thence S 72° 07' 53" E, a distance of 485.44 feet; thence S 78° 24' 17" E, a distance of 229.22 feet; thence N 58° 26' 06" E, a distance of 167.24 feet; thence N 58° 13' 00" E, a distance of 124.69 feet; thence N 55° 00' 00" E, a distance of 57.99 feet; thence N 49° 36' 41" E, a distance of 134.86 feet to a point on the south line of the above described parcel.

CERTIFICATION

I hereby certify to Delhur Industries, Inc. that this plat was prepared by me or under my direct responsibility, supervision and checking and the parcel is monumented as shown to the best of my knowledge and belief.

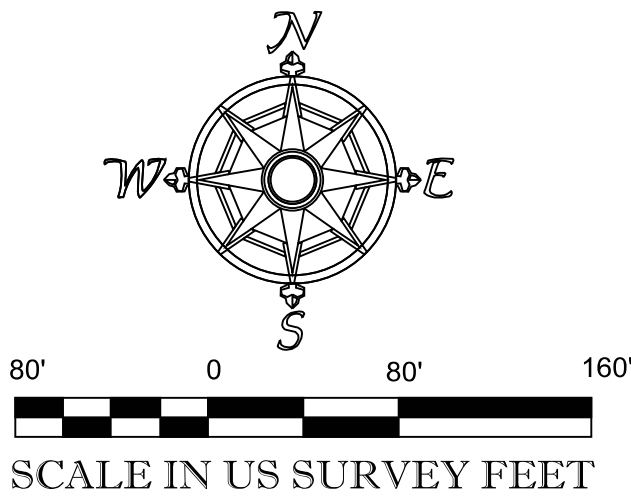
By:  Date _____
Daniel L. Wachob, Professional Land Surveyor, No. 19627
Colorado City, Colorado



BASIS OF BEARINGS: N 00° 59' 01" E, a distance of 5313.44 feet marked by two 1921 GLO Brass Caps as shown.

"NOTICE": According to Colorado law you must commence any Legal action based upon any defect in this survey with in three years after you first discover such a defect. In no event may any action based upon any defect in this survey be commenced more than ten years from the date of certification shown hereon.

"NOTE" A search for recorded Rights-of-Way and Easements was not done.



LEGEND

- Set Pin/Cap LS 19627
- Found 5/8" Rebar/No Cap
- ▲ 1921 GLO Brass Caps

Wachob and Wachob, Inc.
Professional Land Surveyors, Colorado City, Colorado
P.O. Box 19376, Zip 81019 Phone (719)-676-3665

Job Name: 2013-066.TRV		
Scale: 1" = 80'		Drawn By: W.S.B
Date: = 6-21-2013		
Job No. 2013-066		Sheet 1/1