



STATE OF
COLORADO

Cazier - DNR, Tim <tim.cazier@state.co.us>

CC&V - Proposed Water Pond drawing

2 messages

Comer, Timm <TComer@anglogoldashantina.com>

Fri, Jun 21, 2013 at 12:49 PM

To: "Cazier - DNR, Tim" <tim.cazier@state.co.us>

Tim,

Attached is drawing of temporary fresh water holding pond we would like to construct and utilize for filling water trucks at CC&V for dust mitigation efforts, particularly as soon as we can because of the draught conditions in the area. The location is on the Squaw Gulch Overburden Storage Area within the current disturbance footprint. The liner and area would be reclaimed as part of the approved plan for the SGOSA. You can see where the water line will come from the line installed as part of the Mill water line.

Thanks,

Timm

Timm C. Comer
Manager, Environmental Resources
AngloGold Ashanti (Colorado) Corp.

Tel: (719) 689-4055
Cell: (719) 650-2615
Fax: (719) 689-3254
E-mail: tcomer@AngloGoldAshantiNA.com

Confidentiality Warning

This e-mail message contains confidential information which is intended for the use of the person to whom it is addressed. If you received it in error, please notify the sender and delete the material from any computer. Any disclosure, re-transmission, dissemination or any other use of this information is strictly prohibited.

 **PROPOSED HOLDING POND-062013.pdf**
567K

Cazier - DNR, Tim <tim.cazier@state.co.us>
To: "Comer, Timm" <TComer@anglogoldashantina.com>

Wed, Jun 26, 2013 at 3:32 PM

Timm,

The DRMS understands that this proposed pond is intended to be a temporary facility to support construction activities (e.g., dust control) related to the Squaw Gulch Valley Leach Facility (SGVLF). Furthermore, it is understood that the pond will be decommissioned upon the completion of SGVLF construction anticipated to be in 2016.

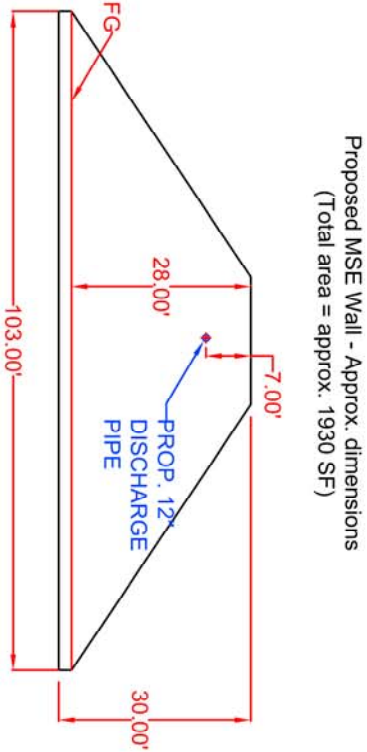
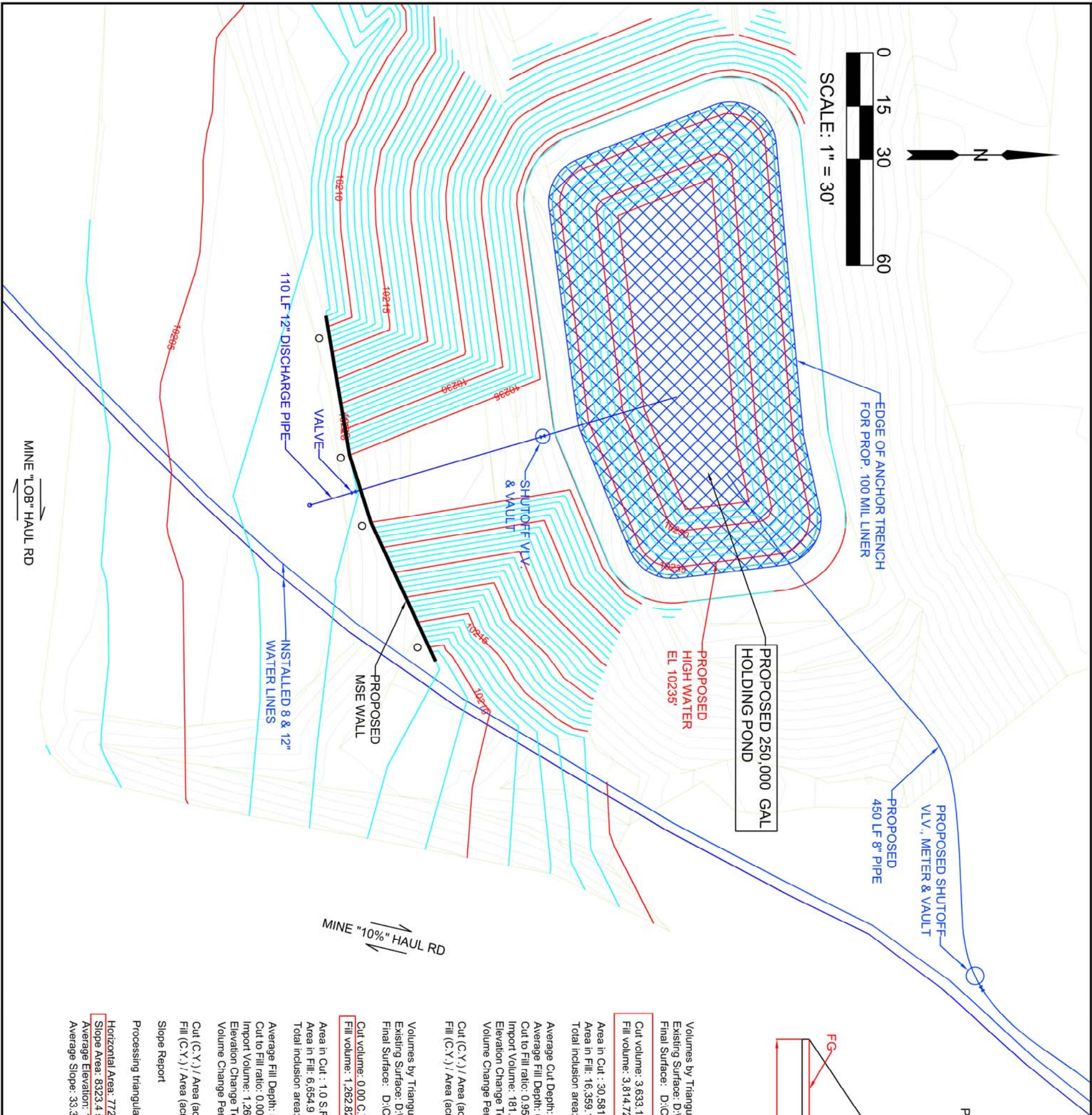
Should plans change, please notify the DRMS within 30 days of a change to the life of the pond or its intended use.

Thank you.

Tim Cazier, P.E.

Environmental Protection Specialist
Colorado Division of Reclamation, Mining and Safety
1313 Sherman Street, Room 215
Denver, CO 80203
ph: 303-866-3567 x8169
NEW cell: 303-328-5229
fax: 303-832-8106
tim.cazier@state.co.us

[Quoted text hidden]



Proposed MSE Wall - Approx. dimensions
(Total area = approx. 1930 SF)

Volumes by Triangulation (Prisms) Tue Jun 04 06:32:02 2013
Existing Surface: D:\Cripple Creek\ME2\Water Pond constr\Water Pond survey-EG.tin
Final Surface: D:\Cripple Creek\ME2\Water Pond constr\Water Pond finish grade 060413.tin

Cut volume: 3.633.13 C.Y.
Fill volume: 3.814.72 C.Y. (ESTIMATED EARTHWORK VOLUMES)

Area in Cut : 30,581.9 S.F.
Area in Fill: 16,359.1 S.F.
Total inclusion area: 46,941.1 S.F.

Average Cut Depth: 3.21 feet
Average Fill Depth: 6.30 feet
Cut to Fill ratio: 0.95
Import Volume: 181.6 C.Y.
Elevation Change To Reach Balance: -0.104
Volume Change Per .1 ft: 173.9 C.Y.

Cut (C.Y.) / Area (acres): 3371.44
Fill (C.Y.) / Area (acres): 3539.95

Volumes by Triangulation (Prisms) Tue Jun 04 09:37:25 2013
Existing Surface: D:\Cripple Creek\ME2\Water Pond constr\Water Pond finish grade 060413.tin
Final Surface: D:\Cripple Creek\ME2\Water Pond constr\Water Pond finish grade 060413.tin

Cut volume: 0.00 C.Y.
Fill volume: 1.262.82 C.Y. (ESTIMATED POND VOLUME = 255,000 GAL W/1' FREEBOARD)

Area in Cut : 1.0 S.F.
Area in Fill: 6,654.9 S.F.
Total inclusion area: 6,655.8 S.F.

Average Fill Depth: 5.12 feet
Cut to Fill ratio: 0.00
Import Volume: 1,262.8 C.Y.
Elevation Change To Reach Balance: -5.123
Volume Change Per .1 ft: 24.7 C.Y.

Cut (C.Y.) / Area (acres): 0.00
Fill (C.Y.) / Area (acres): 8264.73

Slope Report Tue Jun 04 08:32:46 2013

Processing triangulation file: D:\Cripple Creek\ME2\Water Pond constr\Water Pond finish grade 060413.tin

Horizontal Area: 7722.2 sq ft, 0.177 acres
Slope Area: 8323.4 sq ft, 0.191 acres (ESTIMATED 100 MIL LLDP GEOMEMBRANE SURFACE AREA)
Average Elevation: 10230.68
Average Slope: 33.32%



AMES CONSTRUCTION INC.
18450 East 28th Ave.
Aurora, Colorado 80011
PHONE (303) 363-1000
FAX (303) 363-4101

DATE: JUNE 20, 2013
SCALE: 1" = 30'

DRAWN BY:

SURVEY BY:

CONTOUR INT.: 1'-FT.

REVISIONS:
REV #

CC&V - VLF2 PROJECT
PROPOSED WATER HOLDING POND
CC&V - CRIPPLE CREEK, CO

PROJECT NO.
130601

SHEET NO.
1 OF 1