



cotter

May 1, 2013

Dustin Czapla
Colorado Division of Reclamation, Mining and Safety
Grand Junction Field Office
101 S. Third St, Room 301
Grand Junction, Colorado 81501

RECEIVED
MAY 03 2013
GRAND JUNCTION FIELD OFFICE
DIVISION OF
RECLAMATION MINING & SAFETY

RE: LP-21 Response to Radiometric Survey Changes

Mr. Czapla:

Attached are two copies of Cotter Corporation (N.S.L.)'s Revised Radiometric Survey Maps for the LP-21 Mine Permit #M-1977-311. The permit boundary has been incorporated into the drawing as requested.

The highest reading noted in reviewing the radiometric scan data was 316 $\mu\text{R/hr}$.

If you have any questions or concerns regarding the information submitted please call me at the number shown below.

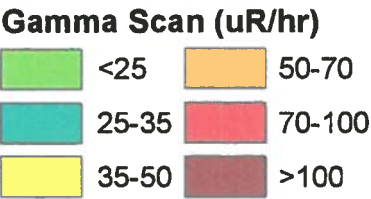
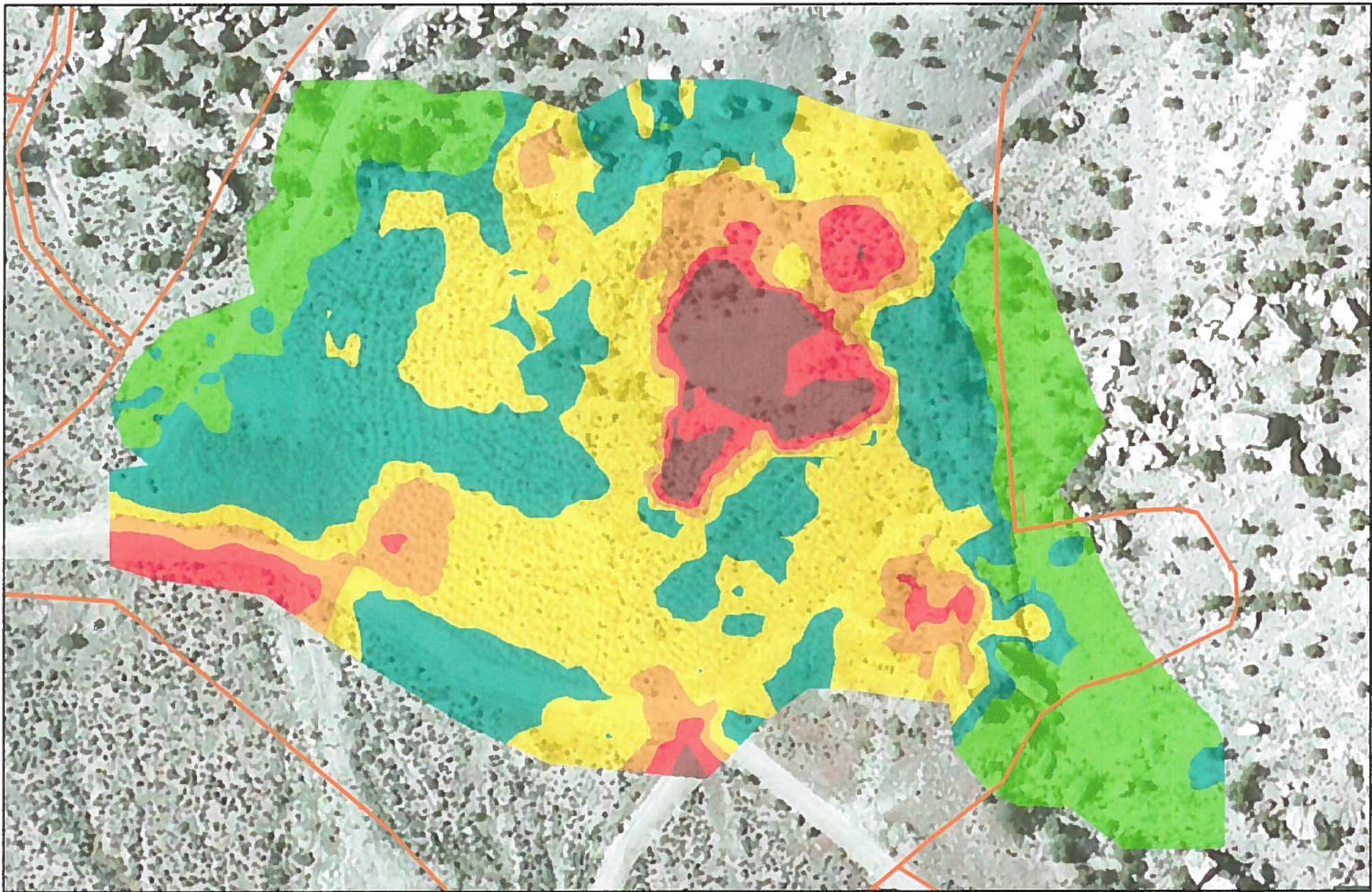
Respectfully,

Glen Williams
Vice President, Mining Operations

LP-21 resp to rad map rvw

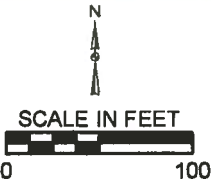
Cotter Corporation - West Slope Operations
P.O. Box 700, 28151 DD Road, Nucla, CO 81424 USA

Telephone (970) 864-7347
Fax (970) 864-7287



RECEIVED

MAY 03 2013
GRAND JUNCTION FIELD OFFICE
DIVISION OF
RECLAMATION MINING & SAFETY



Gamma Scan - Krig
LP-21

