



**cotter**

**RECEIVED**

VIA U.S. MAIL

April 16, 2013

APR 16 2013

GRAND JUNCTION FIELD OFFICE  
DIVISION OF  
RECLAMATION MINING & SAFETY

Dustin Czapla  
Colorado Division of Reclamation, Mining and Safety  
Grand Junction Field Office  
101 S. Third St., Room 301  
Grand Junction, CO 81501

Re: SR-13A Response to Radiometric Survey Changes

Dear Mr. Czapla:

Enclosed are two copies of Cotter Corporation (N.S.L.)'s Revised Radiometric Survey Maps for the SR-13A Mine Permit #M-1977-311. The permit boundary has been incorporated into the drawings as requested.

The highest reading noted in reviewing the radiometric scan data was 287  $\mu$ R/hr.

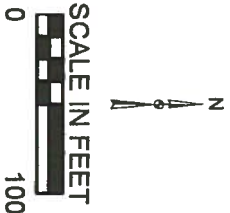
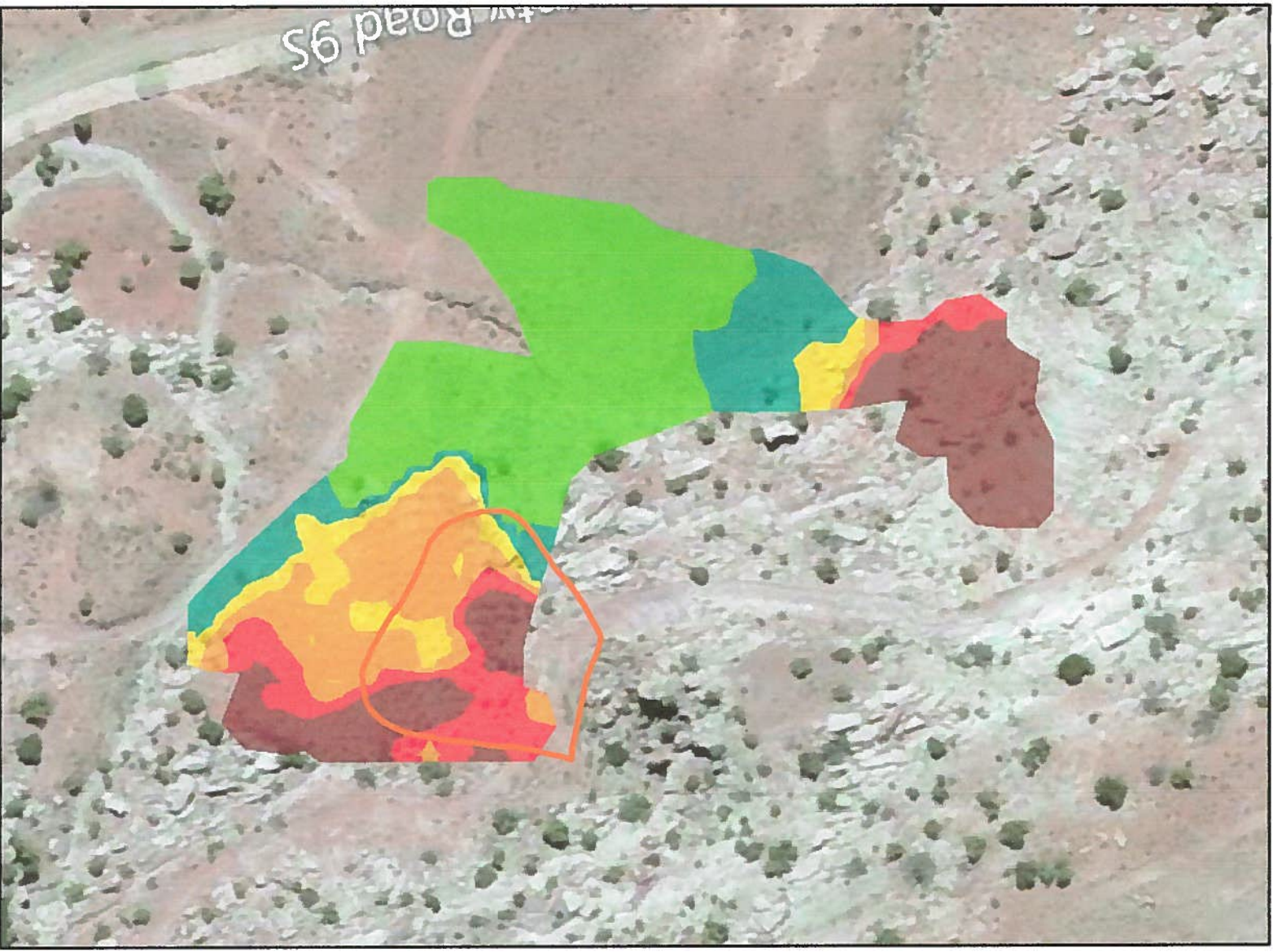
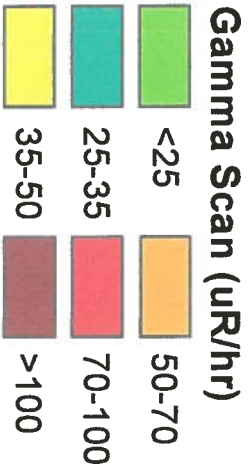
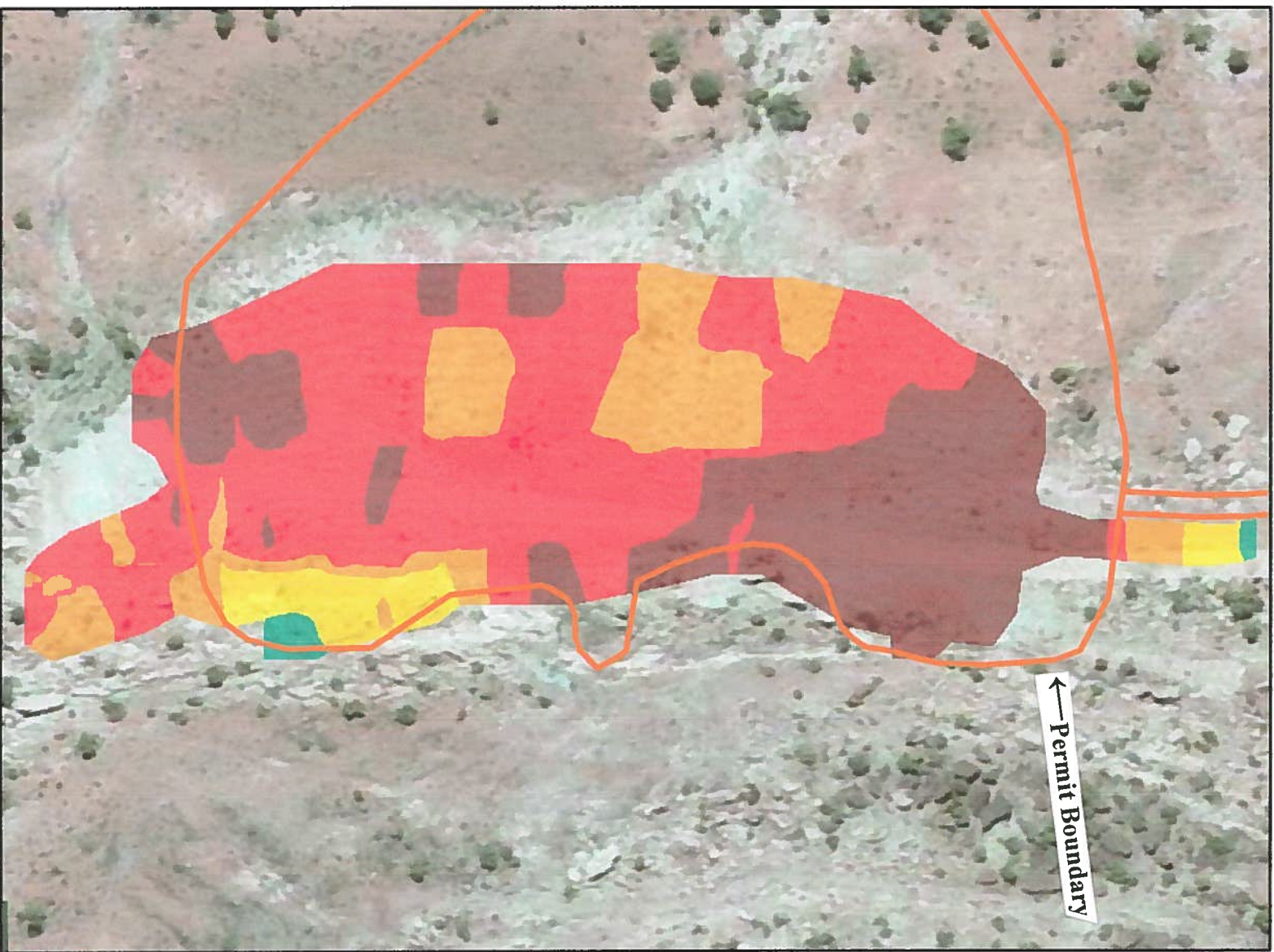
If you have any questions or concerns regarding the information submitted, please call me at the number shown below.

Respectfully,

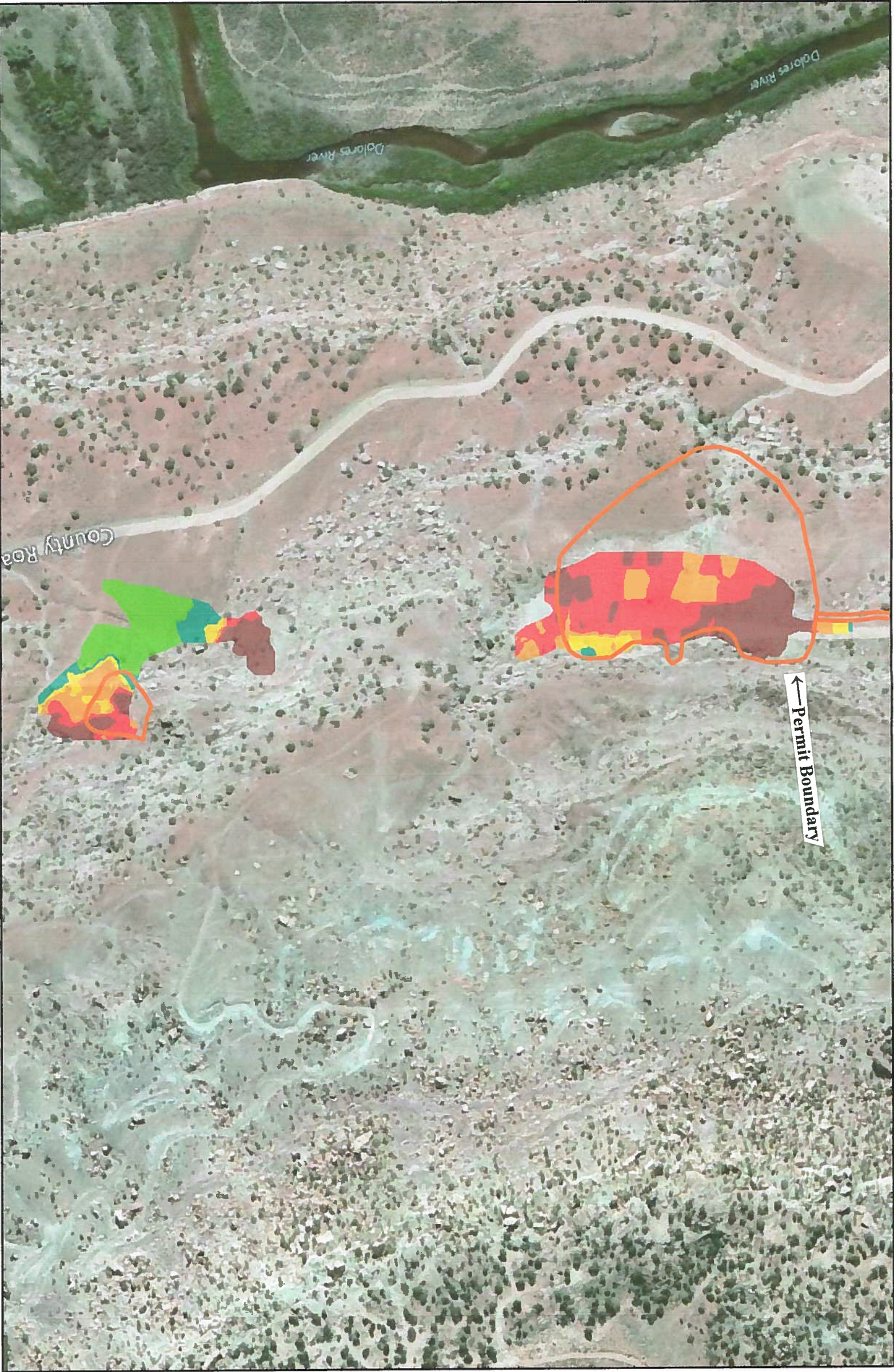
Glen Williams  
Vice President, Mining Operations

Enclosures

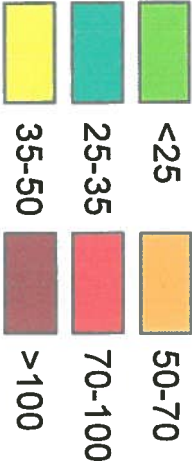








Gamma Scan (uR/hr)



Gamma Scan - Krig  
SR13A

