



REPLY TO
ATTENTION OF

DEPARTMENT OF THE ARMY
U.S. ARMY ENGINEER DISTRICT, SACRAMENTO
CORPS OF ENGINEERS
1325 J STREET
SACRAMENTO CA 95814-2922

RECEIVED

February 5, 2013

FEB 06 2013

Regulatory Division SPK-2013-00092

GRAND JUNCTION FIELD OFFICE
DIVISION OF
RECLAMATION MINING & SAFETY

Tony A. Connell
Connell Resources Incorporated
2673 Jacob Circle
Steamboat Springs, Colorado 80487

Dear Mr. Connell:

We are responding to a January 23, 2013, request for a preliminary jurisdictional determination (JD), submitted on your behalf by Western Bionomics LLC, for the Connell Resources Hayden Pit site. The approximately 455-acre site is located within Section 12, Township 6 North, Range 88 West, Latitude 40.495563°, Longitude -107.209372°, approximately 2.5 miles east of the Town of Hayden in Routt County, Colorado.

Based on available information and an October 16, 2012, site visit by Mr. Steve Moore of our office, we concur with the amount and location of wetlands and/or other water bodies on the site as depicted on the enclosed map labeled **CONNELL RESOURCES HAYDEN AGGREGATE PIT, FIGURE 2 JURISDICTIONAL WETLANDS**, dated January 15, 2013. The approximately 19.44 acres of wetlands, as well as various unidentified tributaries within the survey area are potential waters of the United States regulated under Section 404 of the Clean Water Act.

It is our understanding that aggregate extraction operations are scheduled to occur within portions of the 455-acre survey area in the near future, but that none of these operations will take place within waters of the U.S., including wetlands. You should not start any work in potentially jurisdictional waters of the United States unless you have Department of the Army permit authorization for the activity. Please provide a copy of this letter and notice to all other affected parties, including any individual who has an identifiable and substantial legal interest in the property.

Please refer to identification number SPK-2013-00092 in any correspondence concerning this project. If you have any questions, please contact Mr. Steve Moore at our Colorado West Regulatory Branch, 400 Rood Avenue, Room 224, Grand Junction, Colorado 81501-2563, email Stephen.A.Moore@usace.army.mil, or telephone (970) 243-1199, extension 13. We appreciate

your feedback. At your earliest convenience, please tell us how we are doing by completing the customer survey on our website under *Customer Service Survey*
www.spk.usace.army.mil/Missions/Regulatory.aspx

Sincerely,

Original Signed

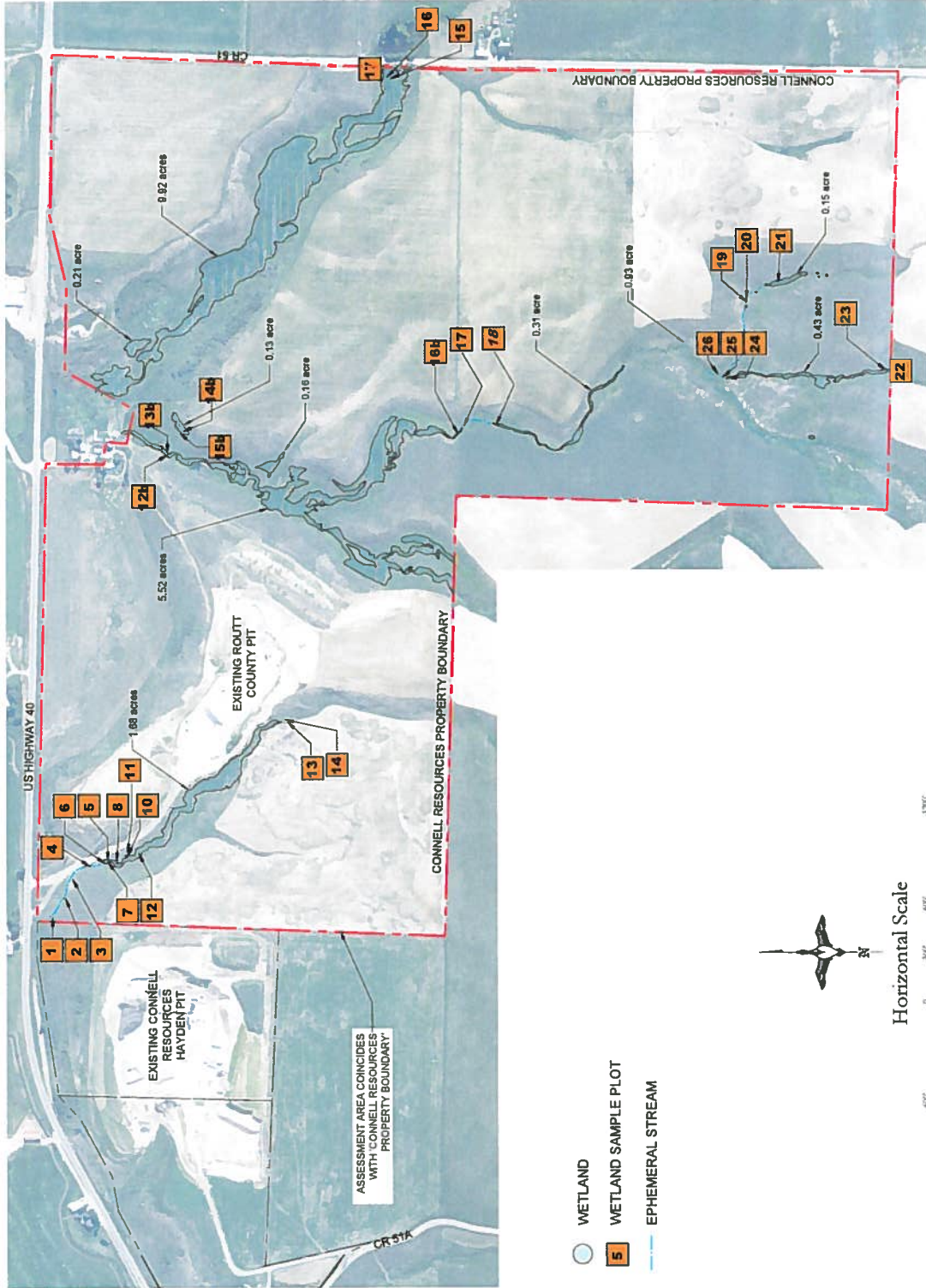
Susan Bachini Nall
Chief, Colorado West Regulatory Branch

Enclosures:

1. Figure 2 - Connell Resources Hayden Aggregate Pit Jurisdictional Wetlands map w/ vicinity map
2. PJD Options and Appeal form

Copy furnished:

- ✓ Mr. Dustin Czapla, Colorado Department of Natural Resources, Division of Reclamation, Mining and Safety, 101 South 3rd, Suite 301, Grand Junction, Colorado 81501
- Mr. Chad L. Phillips, Planning Director, Routt County, PO Box 773749, Steamboat Springs, Colorado 80477
- Mr. Kelly Colfer, Western Bionomics LLC, 31040 Willow Lane, Steamboat Springs, Colorado 80487
- Ms. Sheri Welch, CWH Properties LLC, 7785 Highland Meadows Parkway #100, Ft. Collins, Colorado 80528



- WETLAND
- WETLAND SAMPLE PLOT
- EPHEMERAL STREAM



CONNELL RESOURCES
HAYDEN AGGREGATE PIT

FIGURE 2
JURISDICTIONAL
WETLANDS

Western Dynamics, LLC	
10000 1st Avenue, Suite 100, Denver, CO 80202	
Date: 10/1/2011	Project: 11
SHEET NO. 1 OF 1	
Author:	Reviewer:
Drawn:	Checked:
Scale:	Notes:

MOUNT HARRIS QUADRANGLE
COLORADO—ROUTT CO.
7.5 MINUTE SERIES (TOPOGRAPHIC)
REV. 1954 MOUNT HARRIS & CHRYSLER

MOUNT HARRIS QUADRANGLE
COLORADO—ROUTT CO.
7.5 MINUTE SERIES (TOPOGRAPHIC)
REV. 1954 MOUNT HARRIS & CHRYSLER

CONNELL RESOURCES
HAYDEN PIT
ASSESSMENT AREA

**CONNELL RESOURCES
HAYDEN AGGREGATE PIT**

FIGURE 1.
VICINITY MAP

