



cotter

RECEIVED

DEC 14 2012

GRAND JUNCTION FIELD OFFICE
DIVISION OF
RECLAMATION MINING & SAFETY

December 13, 2012

Dustin Czapla
Colorado Division of Reclamation, Mining, and Safety
Grand Junction Field Office
101 S. Third St, Suite 301
Grand Junction, Colorado 81501

RE: Radiometric Survey Map for SR-13A Mine Permit Amendment, Permit No. M-1977-311

Mr. Czapla:

Please find enclosed a map showing the results of the radiometric scanning that was done at the SR-13A Mine property. This map should be used in conjunction with the radiometric scan maps that were previously submitted with the Response to Adequacy Review # 1.

If you have further questions regarding this information please call me at Cotter's Nucla office, 970-864-7347.

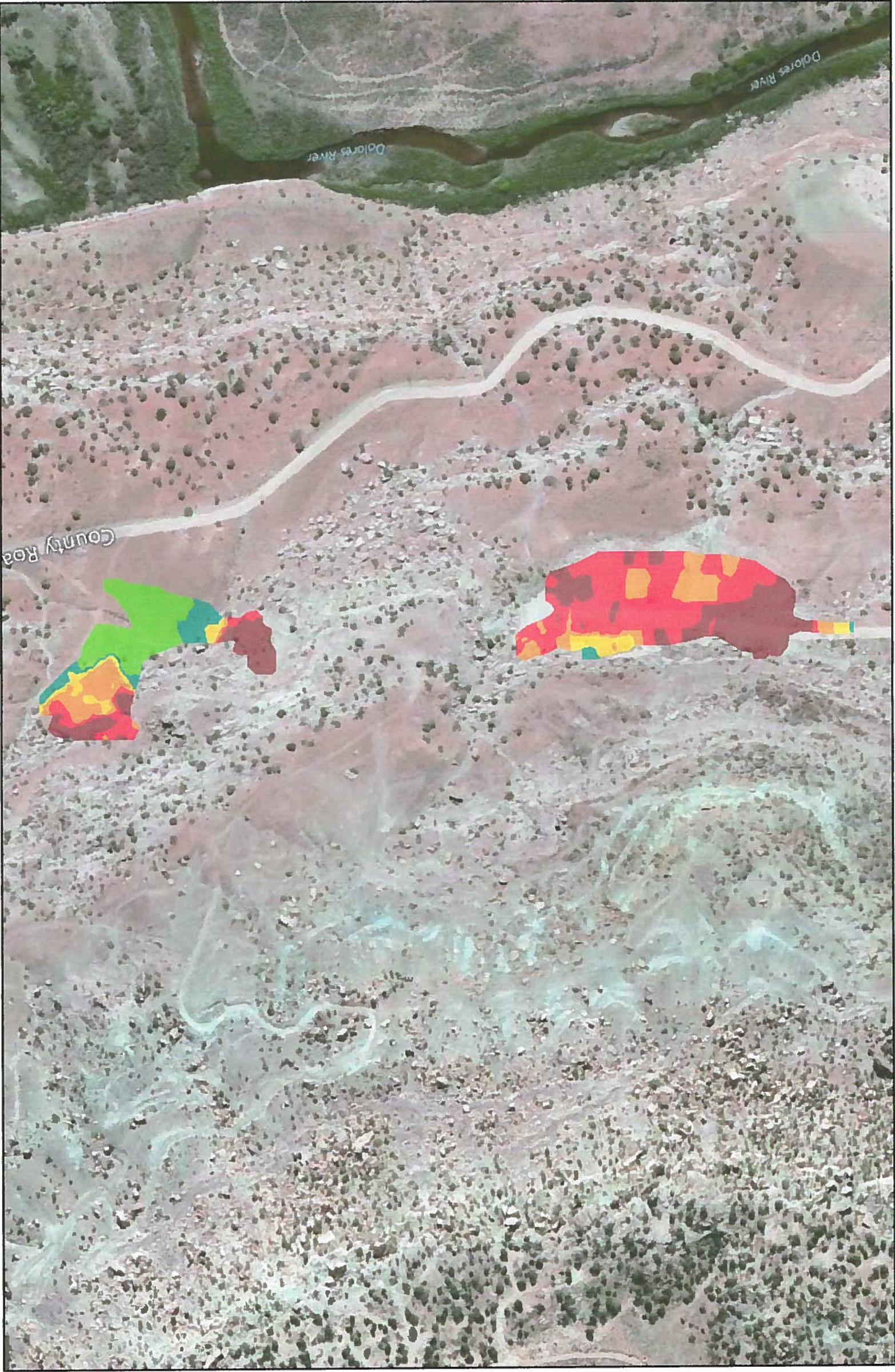
Respectfully,

Glen Williams
Vice President, Mining Operations

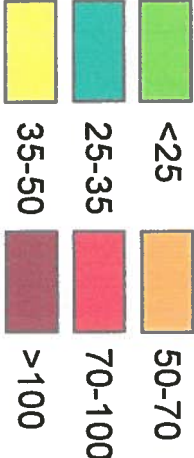
SR-13A DRMS radiometric scan map

Cotter Corporation - West Slope Operations
P.O. Box 700, 28151 DD Road, Nucla, CO 81424 USA

Telephone (970) 864-7347
Fax (970) 864-7287



Gamma Scan (uR/hr)



Gamma Scan - Krig
SR13A