



**cotter**

**RECEIVED**

DEC 14 2012

GRAND JUNCTION FIELD OFFICE  
DIVISION OF  
RECLAMATION MINING & SAFETY

December 13, 2012

Dustin Czapla  
Colorado Division of Reclamation, Mining, and Safety  
Grand Junction Field Office  
101 S. Third St, Suite 301  
Grand Junction, Colorado 81501

RE: Radiometric Survey Map for LP-21 Mine Permit Amendment, Permit No. M-1977-305

Mr. Czapla:

Please find enclosed a map showing the results of the radiometric scanning that was done at the LP-21 Mine property. This map should be used in conjunction with the radiometric scan maps that were previously submitted with the Response to Adequacy Review # 1.

If you have further questions regarding this information please call me at Cotter's Nucla office, 970-864-7347.

Respectfully,

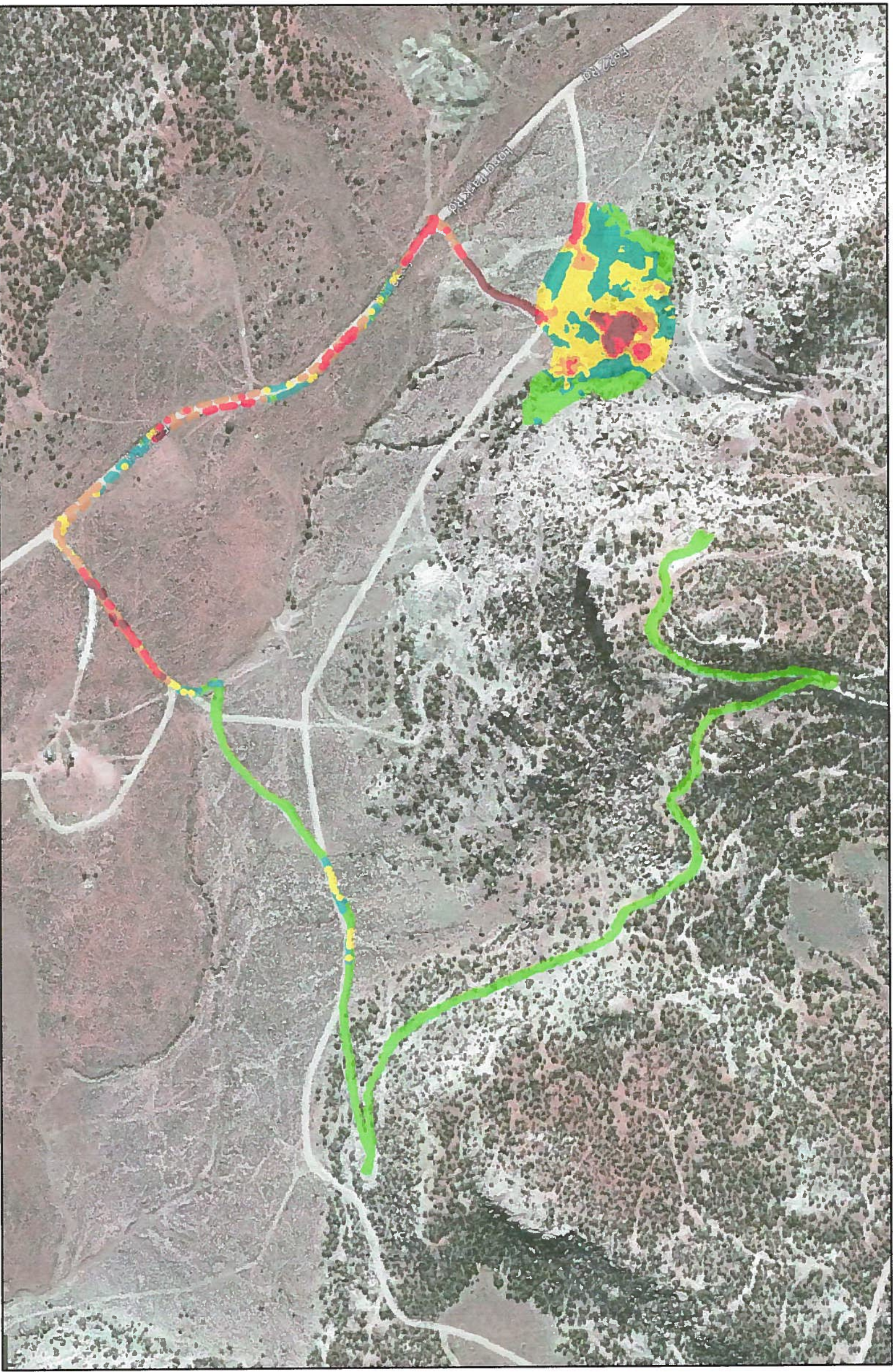
Glen Williams

Vice President, Mining Operations

LP-21 DRMS radiometric scan map

Cotter Corporation - West Slope Operations  
P.O. Box 700, 28151 DD Road, Nucla, CO 81424 USA

Telephone (970) 864-7347  
Fax (970) 864-7287



Gamma Scan (uR/hr)

Gamma Scan - Krig  
LP-21