



cotter

RECEIVED

DEC 14 2012

GRAND JUNCTION FIELD OFFICE
DIVISION OF
RECLAMATION MINING & SAFETY

December 13, 2012

Dustin Czapla
Colorado Division of Reclamation, Mining, and Safety
Grand Junction Field Office
101 S. Third St, Suite 301
Grand Junction, Colorado 81501

RE: Radiometric Survey Map for CM-25 Mine Permit Amendment, Permit No. M-1977-307

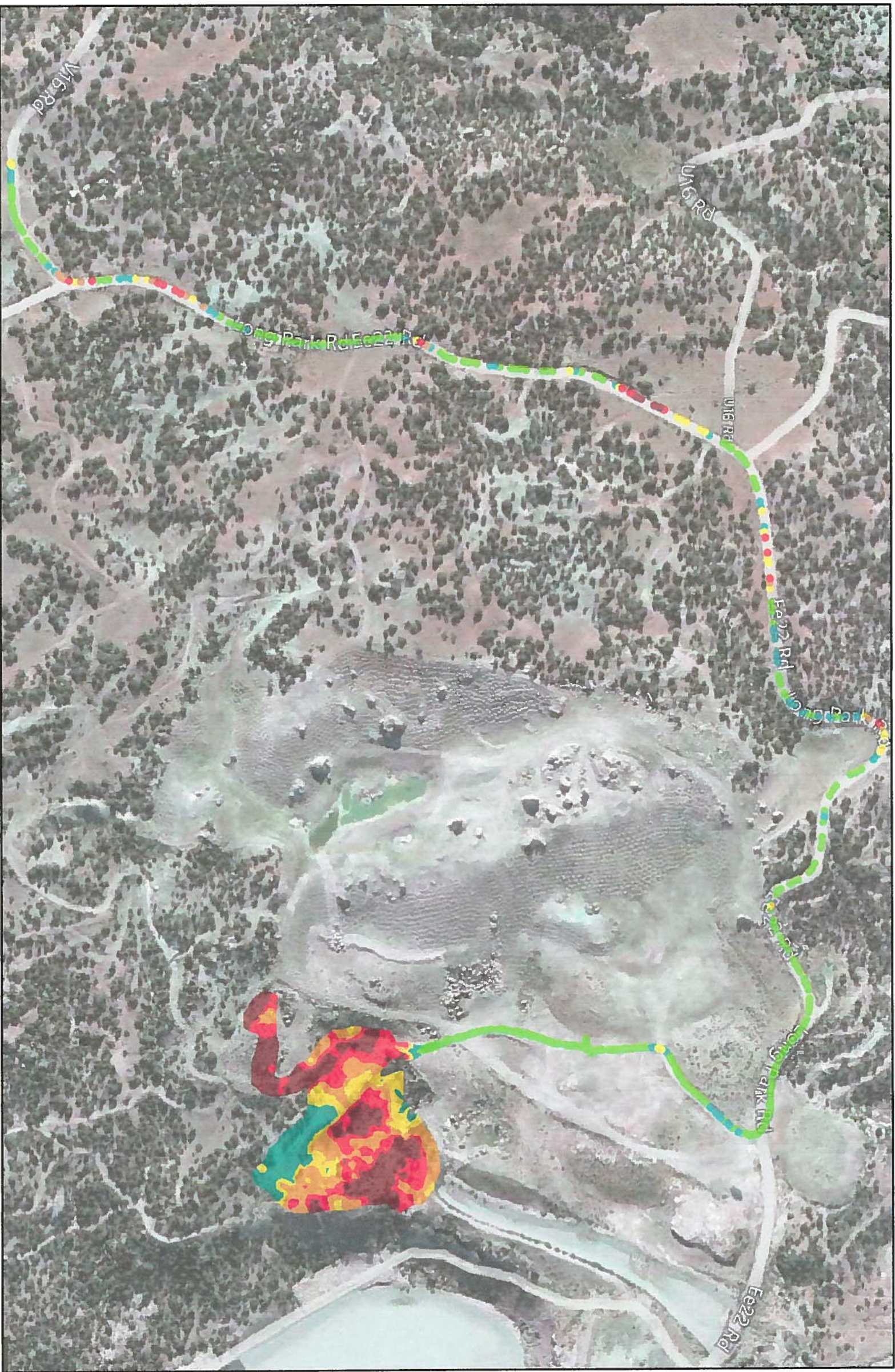
Mr. Czapla:

Please find enclosed a map showing the results of the radiometric scanning that was done at the CM-25 Mine property. This map should be used in conjunction with the radiometric scan maps that were previously submitted with the Response to Adequacy Review # 1.

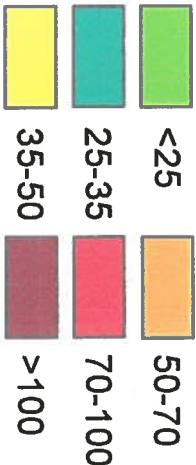
If you have further questions regarding this information please call me at Cotter's Nucla office, 970-864-7347.

Respectfully,

Glen Williams
Vice President, Mining Operations



Gamma Scan (uR/hr)



Gamma Scan - Krig

CM-25

SCALE IN FEET

