



RECEIVED

JUL 19 2012

GRAND JUNCTION FIELD OFFICE
DIVISION OF
RECLAMATION MINING & SAFETY

July 17, 2012

Russ Means
Colorado Division of Reclamation, Mining, and Safety
Grand Junction Field Office
101 S. Third St, Room 301
Grand Junction, Colorado 81501

RE: Cotter Corporation Response to Adequacy Review # 2 for Amendment for JD-8
Mine, Permit #M-1984-014

Mr. Means:

Attached is a revised Figure 3 with the Areas 1 and 4 delineated.

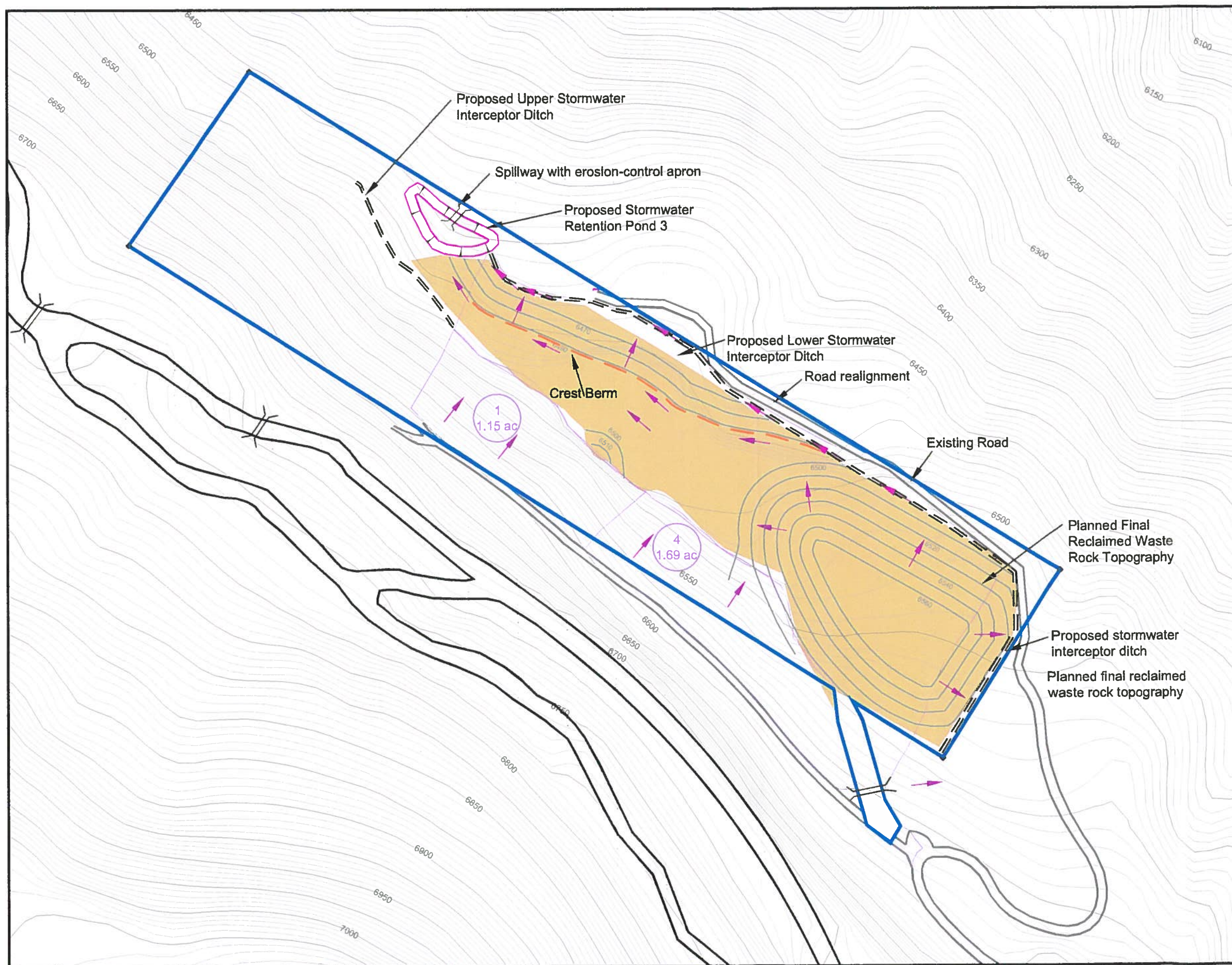
Also enclosed is the JD-8 Biological Resources Report prepared by ERO Resources.

If you have further questions, or comments, regarding the amendment AM-01 for JD-8,
please call me at Cotter's Nucla office, 970-864-7347.

Respectfully,

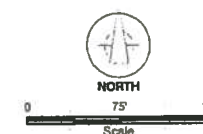
A handwritten signature in black ink, appearing to read "Glen Williams", written in a cursive style.

Glen Williams
Vice President of Mining
Cotter Corporation



EXPLANATION

- Lower Mine Permit Boundary
- Roads
- Reclaimed Waste Rock (Planned Final)
- Direction of Flow
- Contributing Drainage Areas



Cotter Corporation (N.S.L.)
P.O. Box 700
Nucita, CO 81424

JD-8 MINE DRAINAGE PLAN

FIGURE 3 POST-MINING STORMWATER ROUTING AND CONTAINMENT PLAN

Scale: 1" = 150' 1:1,800	Date: 7/17/2012
Project No: 4122A	County: MONTROSE COUNTY, CO
Whetstone Associates	File: JD8 Reg Map-R27.dwg
	Drawn/Checked By: NH/SW