



David Valvoda  
Plant Manager

2717 County Road 215  
Parachute, CO 81635

International Telephone +1 (970) 285-6500  
General Facsimile (970) 285-6393

**RECEIVED**

Tuesday, June 5, 2012

JUN 06 2012

ENV024.12

Mr. Nathan Wiser 8ENF-UFO  
U. S. Environmental Protection Agency  
Region VIII  
1595 Wynkoop Street  
Denver, CO 80202-1129

GRAND JUNCTION FIELD OFFICE  
DIVISION OF  
RECLAMATION MINING & SAFETY

Dear Mr. Wiser:

On May 30 and 31, 2012 American Soda conducted mechanical integrity testing of the remaining Class III injection wells in the Yankee Gulch Well Field. The results of the testing are summarized in the following table:

Well	Status Long String	Status Short String	MIT Comment
20-19 (CO3858-04556)	Plugged & Abandoned		12/17/08
		Bridge Plug Set	PASSED 5/31/12
20-33 (CO3858-04560)		Plugged & Abandoned	12/19/08
	Bridge Plug Set		PASSED 5/30/12
20-36 (CO3858-04562)		Bridge Plug Set	PASSED 5/30/12
	Bridge Plug Set		PASSED 5/30/12
20-74 (CO3858-04563)		Bridge Plug Set	PASSED 5/30/12
	Bridge Plug Set		PASSED 5/30/12
28-21 (CO3858-04567)		Plugged & Abandoned	12/18/08
	Bridge Plug Set		FAILED 5/31/12
29-26 (CO3858-04573)		Bridge Plug Set	PASSED 5/31/12
	Bridge Plug Set		PASSED 5/31/12
29-27 (CO3858-04574)		Bridge Plug Set	PASSED 5/31/12
	Bridge Plug Set		PASSED 5/31/12
29-28 (CO3858-04575)		Plugged & Abandoned	12/19/08
	Bridge Plug Set		PASSED 5/31/12

Well	Status Long String	Status Short String	MIT Comment
29-29 (CO3858-04576)		Bridge Plug Set	PASSED 5/30/12
	Bridge Plug Set		PASSED 5/30/12
29-34 (CO3858-04577)		Plugged & Abandoned	10/15/10
	Bridge Plug Set		PASSED 5/30/12
29-78 (CO3858-04657)		Plugged & Abandoned	10/25/06
	Bridge Plug Set		PASSED 5/30/12

One well string –Well 28-21 long string - did not pass MIT criteria during the 2012 testing. Work has already begun to coordinate the plugging and abandonment of this well string within the 90 day time period following the failed MIT. A preliminary plugging and abandonment plan will be submitted to EPA shortly. EPA will also be notified prior to the plugging work so that they will have the opportunity to observe. Copies of the circular charts recorded during the testing and completed EPA forms - "Mechanical Integrity Test Tubing/Casing Annulus Pressure Test" for each well are included as attachments.

Should you have any questions or comments regarding this information please contact me at (970) 285-0428 or Celina Akin at (970) 285-0406.

Sincerely,



David Valvoda  
Plant Manager

DV/CMA

Enclosures: As summarized in the document.

Cc: Kent Walter, BLM  
Travis Marshall, DRMS

# Mechanical Integrity Test Tubing/Casing Annulus Pressure Test

U.S. Environmental Protection Agency  
Underground Injection Control Program  
999 18<sup>th</sup> Street, Suite 200 Denver, CO 80202-2466

EPA Witness: No Witness Date: 5 / 31 / 2012

Test conducted by: Adler Hot Oil Service, Inc. (Trevor Poulsen, Jake Jackson)

Others present: Perry French (D & P Water), Celina Akin (Solvay)

<b>Well Name:</b> <u>20-19 (CO3858-04556)</u>	Type: ER SWD <span style="border: 1px solid black; padding: 0 2px;">Nahcolite</span>	Status: AC <span style="border: 1px solid black; padding: 0 2px;">TA</span> UC
Field: <u>Central Piceance Creek Basin</u>		
Location: <u>464' N &amp; 553' W SE Corner Sec: 20 T 1S R 97 W 6<sup>th</sup> PM</u> County: <u>Rio Blanco</u> State: <u>CO</u>		
Operator: <u>American Soda, L. L. P. dba Solvay Chemicals Inc. (2717 County Road 215, Parachute, CO)</u>		
Last MIT: <u>8 / 17 / 2010</u> Maximum Allowable Pressure: <u>1000</u> PSIG		

Regularly scheduled test? ☒ Yes ☐ No  
 Initial test for permit? ☐ Yes ☐ No  
 Test after well rework? ☐ Yes ☐ No

Well injecting during test? If Yes, rate: Not injecting 0 bpd  
 Pre-test annulus pressure: 0 psig

MIT DATA TABLE	Test #1	Test #2	Test #3
<b>TUBING</b>		<b>PRESSURE RECORD</b>	
<i>Initial Pressure</i>	N/A psig	N/A psig	N/A psig
<i>End of test pressure</i>	N/A psig	N/A psig	N/A psig
<b>CASING/TUBING ANNULUS</b>		<b>PRESSURE RECORD</b>	
	<b>7" SHORT STRING</b>	<b>7" LONG STRING</b>	
<i>0 minutes</i>	410 psig	P & A 2008 psig	N/A psig
<i>5 minutes</i>	410 psig	psig	N/A psig
<i>10 minutes</i>	408 psig		
<i>15 minutes</i>	400 psig		
<i>20 minutes</i>	400 psig		
<i>25 minutes</i>	400 psig		
<i>30 minutes</i>	400 psig		
<i>_____ minutes</i>	N/A psig		
<i>_____ minutes</i>	N/A psig		
<b>RESULT</b>	<input checked="" type="checkbox"/> Pass <input type="checkbox"/> Fail <input type="checkbox"/> Pass		

\* Long string plugged and abandoned in 2008

**Does the annulus pressure build back up after the test ?** If Yes, \_\_\_\_\_ No ☒ \_\_\_\_\_ psig.

## MECHANICAL INTEGRITY PRESSURE TEST

Additional comments for mechanical integrity pressure test, such as volume of fluid added to annulus and bled back at end of test, reason for failing test (casing head leak, tubing leak, other), etc.:

The short string of Well 20-19 took approximately 15 – 20 barrels of water to fill up prior to the test. A maximum pressure of 410 psig was reached with a slight drop to 400 over a 15 minute period then sustained at 400 PSI for the remaining 15 minute testing time period. Water was removed from the well after the test to 5 feet below ground surface to prevent freezing of the well head.

The long string of Well 20-19 was plugged and abandoned in December 2008, thus was not tested for mechanical integrity in 2010. A welded metal cap is in place on the cemented casing.

Signature of Witness: \_\_\_\_\_

### OFFICE USE ONLY - COMPLIANCE FOLLOWUP

Staff \_\_\_\_\_ Date: \_\_\_\_/\_\_\_\_/\_\_\_\_

Do you agree with the reported test results? ☐ YES ☐ NO

If not, why?

Possible violation identified? ☐ YES ☐ NO

If YES, what

**If YES - followup initiated?** ☐ YES

☐ NO - why not?

☐ Data Entry

☐ Compliance Staff

☐ 2<sup>nd</sup> Data Entry

☐ Hardcopy Filing



11:45 A.M.

1 P.M.

2 P.M.

*Steve Strong*  
**CALIBRATED  
HARTS**  
BATAVIA, NY

5/31/2012

METER NUMBER
TIME PUT ON
DATE PUT ON

TUBE & ORIF. SIZE
TIME TAKEN OFF
DATE TAKEN OFF

MW MP 1000  
SIGNED *Well 20-19*

1 A.M.

11:30 A.M.

11 P.M.

10 P.M.

9 P.M.

8 P.M.

7 P.M.

# Mechanical Integrity Test Tubing/Casing Annulus Pressure Test

U.S. Environmental Protection Agency  
Underground Injection Control Program  
999 18<sup>th</sup> Street, Suite 200 Denver, CO 80202-2466

EPA Witness: No Witness Date: 5 / 30 / 2012

Test conducted by: Adler Hot Oil Service, Inc. (Trevor Poulsen, Jake Jackson)

Others present: Perry French (D & P Water), Celina Akin (Solvay)

<b>Well Name:</b> <u>20-33 (CO3858-04560)</u>	Type: ER SWD <span style="border: 1px solid black; padding: 0 2px;">Nahcolite</span>	Status: AC <span style="border: 1px solid black; padding: 0 2px;">TA</span> UC
Field: <u>Central Piceance Creek Basin</u>		
Location: <u>600' N &amp; 2161' E SW Corner Sec: 20 T 1S R 97 W 6<sup>th</sup> PM</u> County: <u>Rio Blanco</u> State: <u>CO</u>		
Operator: <u>American Soda, L. L. P. dba Solvay Chemicals Inc. (2717 County Road 215, Parachute, CO)</u>		
Last MIT: <u>8 / 16 / 2010</u>	<b>Maximum Allowable Pressure:</b> <u>1000</u> <b>PSIG</b>	

Regularly scheduled test? ☒ Yes ☐ No  
 Initial test for permit? ☐ Yes ☐ No  
 Test after well rework? ☐ Yes ☐ No

**Well injecting during test? If Yes, rate:** Not injecting **0 bpd**

**Pre-test annulus pressure:** 0 **psig**

MIT DATA TABLE		Test #1		Test #2		Test #3	
TUBING				PRESSURE RECORD			
Initial Pressure		N/A	psig	N/A	psig	N/A	psig
End of test pressure		N/A	psig	N/A	psig	N/A	psig
CASING/TUBING ANNULUS				PRESSURE RECORD			
		7" LONG STRING		7" SHORT STRING			
0 minutes		440	psig	P & A 2008	psig	N/A	psig
5 minutes		440	psig		psig	N/A	psig
10 minutes		435	psig		psig	N/A	psig
15 minutes		435	psig		psig	N/A	psig
20 minutes		430	psig		psig	N/A	psig
25 minutes		430	psig		psig	N/A	psig
30 minutes		430	psig		psig	N/A	psig
40 minutes		430	psig	N/A	psig	N/A	psig
minutes		N/A	psig	N/A	psig	N/A	psig
RESULT		[ <input checked="" type="checkbox"/> ] Pass [ <input type="checkbox"/> ] Fail		[ <input type="checkbox"/> ] Pass [ <input type="checkbox"/> ] Fail		[ <input type="checkbox"/> ] Pass [ <input type="checkbox"/> ] Fail	

\* Short string plugged and abandoned 2008

**Does the annulus pressure build back up after the test ? If Yes, \_\_\_\_\_ No \_\_\_\_\_ psig.**

## **MECHANICAL INTEGRITY PRESSURE TEST**

Additional comments for mechanical integrity pressure test, such as volume of fluid added to annulus and bled back at end of test, reason for failing test (casing head leak, tubing leak, other), etc.:

---

The long string of Well 20-33 took less than a barrel of water to fill up the well prior to testing. A maximum pressure of approximately 440 psig was reached with a gradual drop off to 430 psig over the duration of the 40 minute test. Water was removed from the well after the test to 5 feet below ground surface to prevent freezing of the well head.

---

The short string of Well 20-33 was plugged and abandoned in December 2008, thus was not tested for mechanical integrity in 2010. A welded metal cap is in place on the cemented casing.

---

Signature of Witness: \_\_\_\_\_

### **OFFICE USE ONLY - COMPLIANCE FOLLOWUP**

Staff \_\_\_\_\_ Date: \_\_\_\_/\_\_\_\_/\_\_\_\_

Do you agree with the reported test results? ☐ YES ☐ NO

If not, why?

Possible violation identified? ☐ YES ☐ NO

If YES, what

**If YES - followup initiated?** ☐ YES

☐ NO - why not?

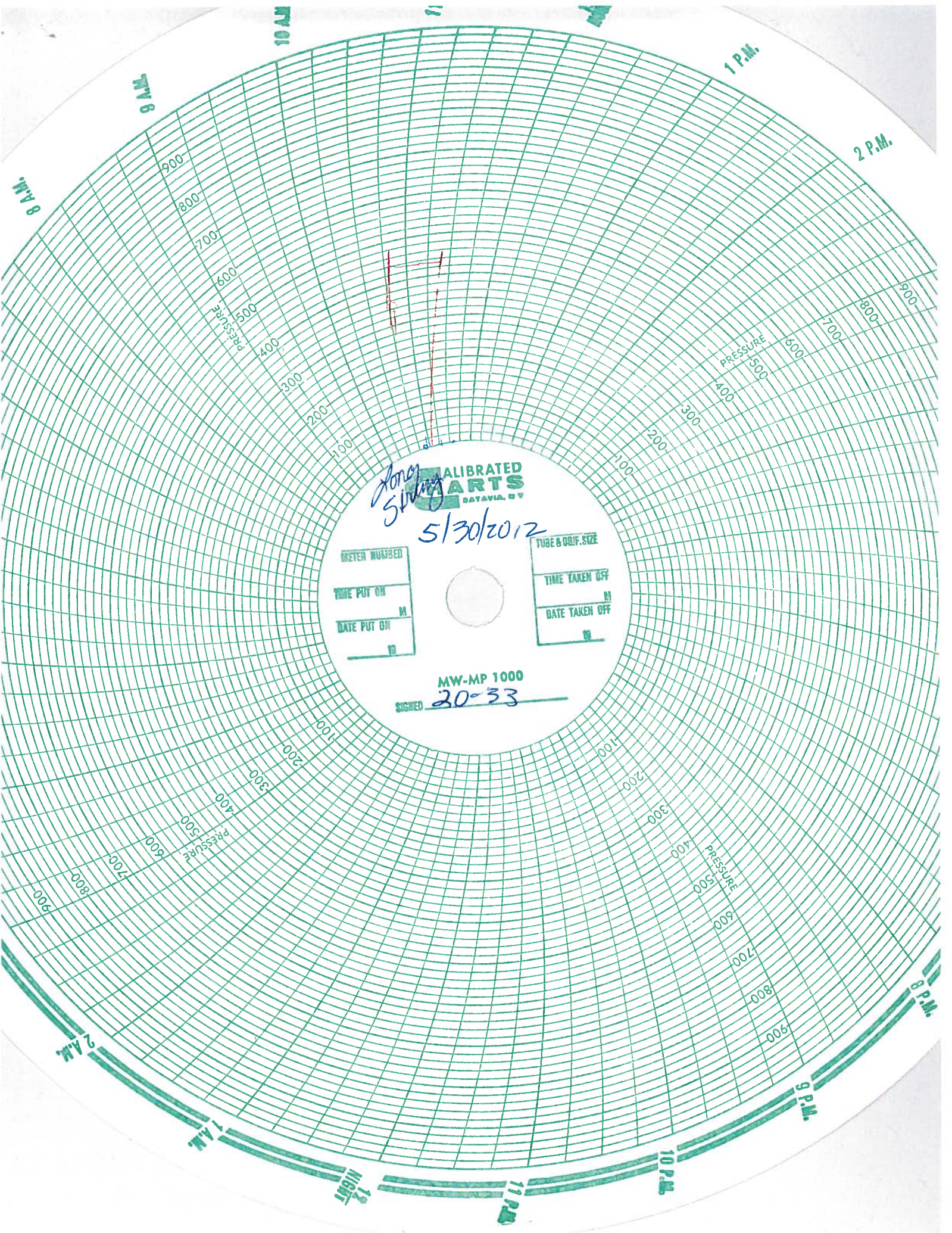
☐ Data Entry

☐ Compliance Staff

☐ 2<sup>nd</sup> Data Entry

☐ Hardcopy Filing





*Along  
Sinking*

*5/30/2012*

METER NUMBER
TIME PUT ON
DATE PUT ON

TUBE & GRIFF. SIZE
TIME TAKEN OFF
DATE TAKEN OFF

MW-MP 1000  
SIGNED *20-33*



# Mechanical Integrity Test Tubing/Casing Annulus Pressure Test

U.S. Environmental Protection Agency  
Underground Injection Control Program  
999 18<sup>th</sup> Street, Suite 200 Denver, CO 80202-2466

EPA Witness: No Witness Date: 5 / 30 / 2012

Test conducted by: Adler Hot Oil Service, Inc. (Trevor Poulsen, Jake Jackson)

Others present: Perry French (D & P Water), Celina Akin (Solvay)

<b>Well Name:</b> <u>20-36 (CO3858-04562)</u>	Type: ER SWD <span style="border: 1px solid black; padding: 0 2px;">Nahcolite</span>	Status: AC <span style="border: 1px solid black; padding: 0 2px;">TA</span> UC
Field: <u>Central Piceance Creek Basin</u>		
Location: <u>1067' N &amp; 1232' E SW Corner Sec: 20 T 1S R 97 W 6<sup>th</sup> PM</u> County: <u>Rio Blanco</u> State: <u>CO</u>		
Operator: <u>American Soda, L. L. P. dba Solvay Chemicals Inc.</u>		
Last MIT: <u>8</u> / <u>16</u> / <u>2010</u> Maximum Allowable Pressure: <u>1000</u> PSIG		

Regularly scheduled test? ☒ Yes ☐ No  
 Initial test for permit? ☐ Yes ☐ No  
 Test after well rework? ☐ Yes ☐ No

Well injecting during test? If Yes, rate: Not injecting 0 bpd

Pre-test annulus pressure: 0 psig

MIT DATA TABLE		Test #1		Test #2		Test #3	
TUBING				PRESSURE RECORD			
Initial Pressure		N/A	psig	N/A	psig	N/A	psig
End of test pressure		N/A	psig	N/A	psig	N/A	psig
CASING/TUBING ANNULUS				PRESSURE RECORD			
		7" SHORT STRING		7" LONG STRING			
0 minutes		420	psig	420	psig	N/A	psig
5 minutes		420	psig	418	psig	N/A	psig
10 minutes		415	psig	417	psig	N/A	psig
15 minutes		415	psig	415	psig	N/A	psig
20 minutes		410	psig	415	psig	N/A	psig
25 minutes		410	psig	415	psig	N/A	psig
30 minutes		410	psig	415	psig	N/A	psig
45 minutes		410	psig	415	psig	N/A	psig
minutes		N/A	psig	N/A	psig	N/A	psig
RESULT		[N] Pass [ ] Fail		[N] Pass [ ] Fail		[ ] Pass [ ] Fail	

**Does the annulus pressure build back up after the test ?** If Yes, \_\_\_\_\_ No \_\_\_\_\_ psig.

## MECHANICAL INTEGRITY PRESSURE TEST

Additional comments for mechanical integrity pressure test, such as volume of fluid added to annulus and bled back at end of test, reason for failing test (casing head leak, tubing leak, other), etc.:

---

The long string of Well 20-36 required less than 1 barrel of water to fill the well prior to the pressure testing. A maximum pressure of 420 psig was reached with a slight drop off to a sustained pressure reading of 415 psig for nearly the entire duration of the test. Water was removed from the well after the test to 5 feet below ground surface to prevent freezing of the well head.

---

The short string of Well 20-36 required less than 1 barrel of water to fill the well prior to the pressure testing. A maximum pressure of 420 psig was reached with a slight drop off to a sustained pressure reading of 410 psig . Water was removed from the well after the test to 5 feet below ground surface to prevent freezing of the well head.

Signature of Witness: \_\_\_\_\_

### OFFICE USE ONLY - COMPLIANCE FOLLOWUP

Staff \_\_\_\_\_ Date: \_\_\_\_ / \_\_\_\_ / \_\_\_\_

Do you agree with the reported test results? ☐ YES ☐ NO

If not, why?

Possible violation identified? ☐ YES ☐ NO

If YES, what

**If YES - followup initiated?** ☐ YES

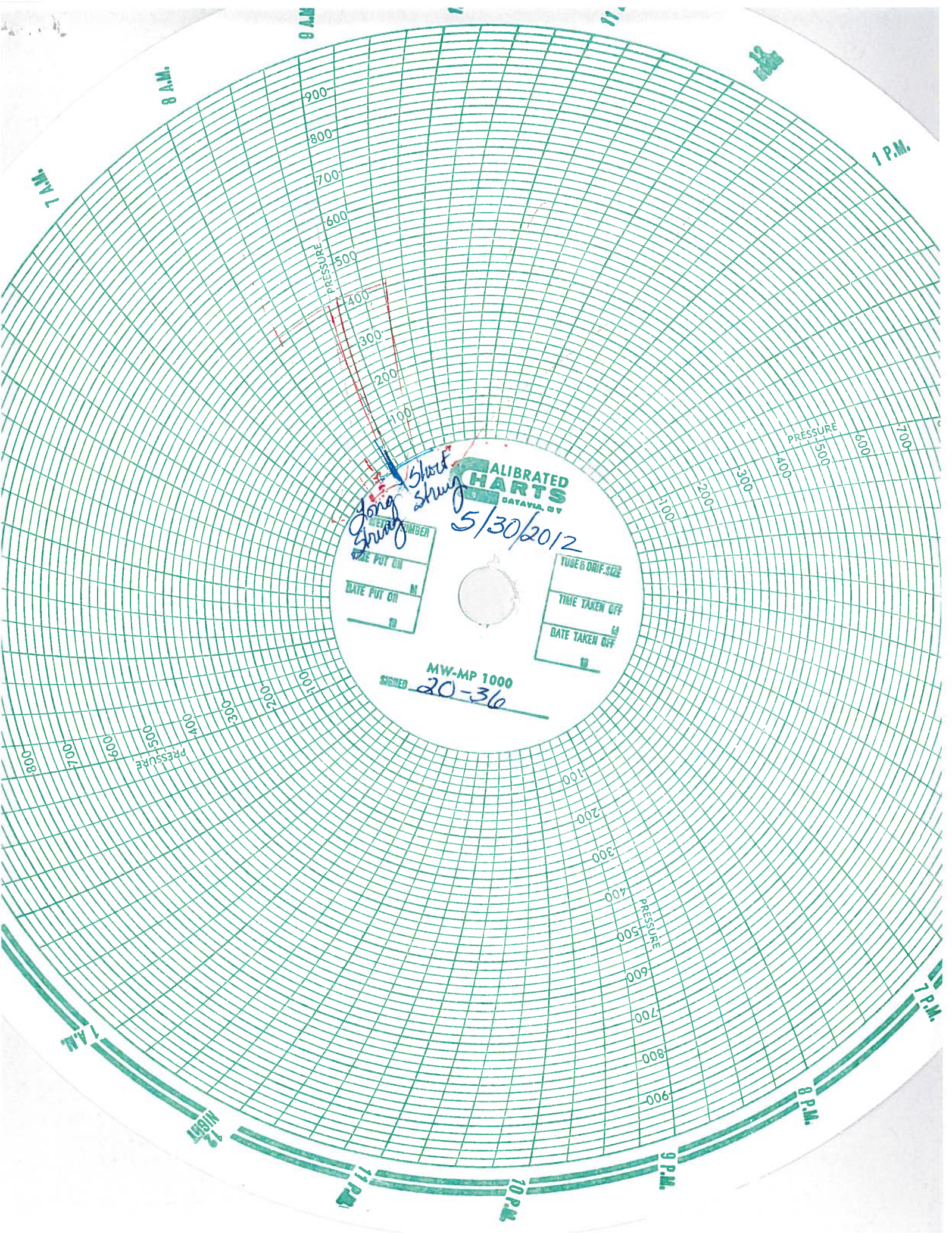
☐ NO - why not?

☐ Data Entry

☐ Compliance Staff

☐ 2<sup>nd</sup> Data Entry

☐ Hardcopy Filing



9 A.M.

8 A.M.

7 A.M.

1 P.M.

900  
800  
700  
600  
500  
400  
300  
200  
100  
PRESSURE

PRESSURE  
700  
600  
500  
400  
300  
200  
100

PRESSURE  
900  
800  
700  
600  
500  
400  
300  
200  
100

PRESSURE  
900  
800  
700  
600  
500  
400  
300  
200  
100

PRESSURE  
900  
800  
700  
600  
500  
400  
300  
200  
100

**CALIBRATED  
CHARTS**  
DATAVIA, BV

*Shut Shung*  
*Long Shung*

5/30/2012

TIME PUT ON	DATE PUT ON

TIME TAKEN OFF	DATE TAKEN OFF

MW-MP 1000  
SIGNED *20-36*



# Mechanical Integrity Test Tubing/Casing Annulus Pressure Test

U.S. Environmental Protection Agency  
Underground Injection Control Program  
999 18<sup>th</sup> Street, Suite 200 Denver, CO 80202-2466

EPA Witness: No Witness Date: 5 / 30 / 2012

Test conducted by: Adler Hot Oil Service, Inc. (Trevor Poulsen, Jake Jackson)

Others present: Perry French (D & P Water), Celina Akin (Solvay)

Well Name: <u>20-74 (CO3858-04563)</u>	Type: ER SWD <span style="border: 1px solid black; padding: 0 2px;">Nahcolite</span>	Status: AC <span style="border: 1px solid black; padding: 0 2px;">TA</span> UC
Field: <u>Central Piceance Creek Basin</u>		
Location: <u>868' N &amp; 2296' E SW Corner Sec: 20 T1S R 97 W 6<sup>th</sup> PM</u> County: <u>Rio Blanco</u> State: <u>CO</u>		
Operator: <u>American Soda, L. L. P. dba Solvay Chemicals Inc. (2717 County Road 215, Parachute, CO)</u>		
Last MIT: <u>8 / 16 / 2010</u>	Maximum Allowable Pressure: <u>1000</u> PSIG	

Regularly scheduled test? ☒ Yes ☐ No  
 Initial test for permit? ☐ Yes ☐ No  
 Test after well rework? ☐ Yes ☐ No

Well injecting during test? If Yes, rate: Not injecting 0 bpd

Pre-test annulus pressure: 0 psig

MIT DATA TABLE		Test #1		Test #2		Test #3	
TUBING				PRESSURE RECORD			
Initial Pressure		N/A	psig	N/A	psig	N/A	psig
End of test pressure		N/A	psig	N/A	psig	N/A	psig
CASING/TUBING ANNULUS				PRESSURE RECORD			
		7" SHORT STRING		7" LONG STRING			
0 minutes		440	psig	420	psig	N/A	psig
5 minutes		435	psig	420	psig	N/A	psig
10 minutes		435	psig	418	psig	N/A	psig
15 minutes		420	psig	416	psig	N/A	psig
20 minutes		420	psig	414	psig	N/A	psig
25 minutes		420	psig	412	psig	N/A	psig
30 minutes		420	psig	410	psig	N/A	psig
35 minutes		420	psig	410	psig	N/A	psig
40 minutes		N/A	psig	N/A	psig	N/A	psig
RESULT		[√] Pass [ ] Fail		[√] Pass [ ] Fail		[ ] Pass [ ] Fail	

Does the annulus pressure build back up after the test ? If Yes, \_\_\_\_\_ No \_\_\_\_\_ psig.

## MECHANICAL INTEGRITY PRESSURE TEST

Additional comments for mechanical integrity pressure test, such as volume of fluid added to annulus and bled back at end of test, reason for failing test (casing head leak, tubing leak, other), etc.:

---

The short string of Well 20-74 took less than one barrel of water to fill up. The well was pressurized to a maximum pressure of 440 psig with a drop to 420 psig over the 35 minute test period.

Pressure on well sustained at 420 psig for nearly half of the test time. Water was removed from the well after the test to 5 feet below ground surface to prevent freezing of the well head.

---

The long string of Well 20-74 took less than a barrel of water to fill up. The well was pressurized to 420 psig with a slight gradual dropping off to approximately 410 psig. Water was removed from the well after the test to 5 feet below ground surface to prevent freezing of the well head.

---

Signature of Witness: \_\_\_\_\_

### OFFICE USE ONLY - COMPLIANCE FOLLOWUP

Staff \_\_\_\_\_ Date: \_\_\_\_/\_\_\_\_/\_\_\_\_

Do you agree with the reported test results? ☐ YES ☐ NO

If not, why?

Possible violation identified? ☐ YES ☐ NO

If YES, what

**If YES - followup initiated?** ☐ YES

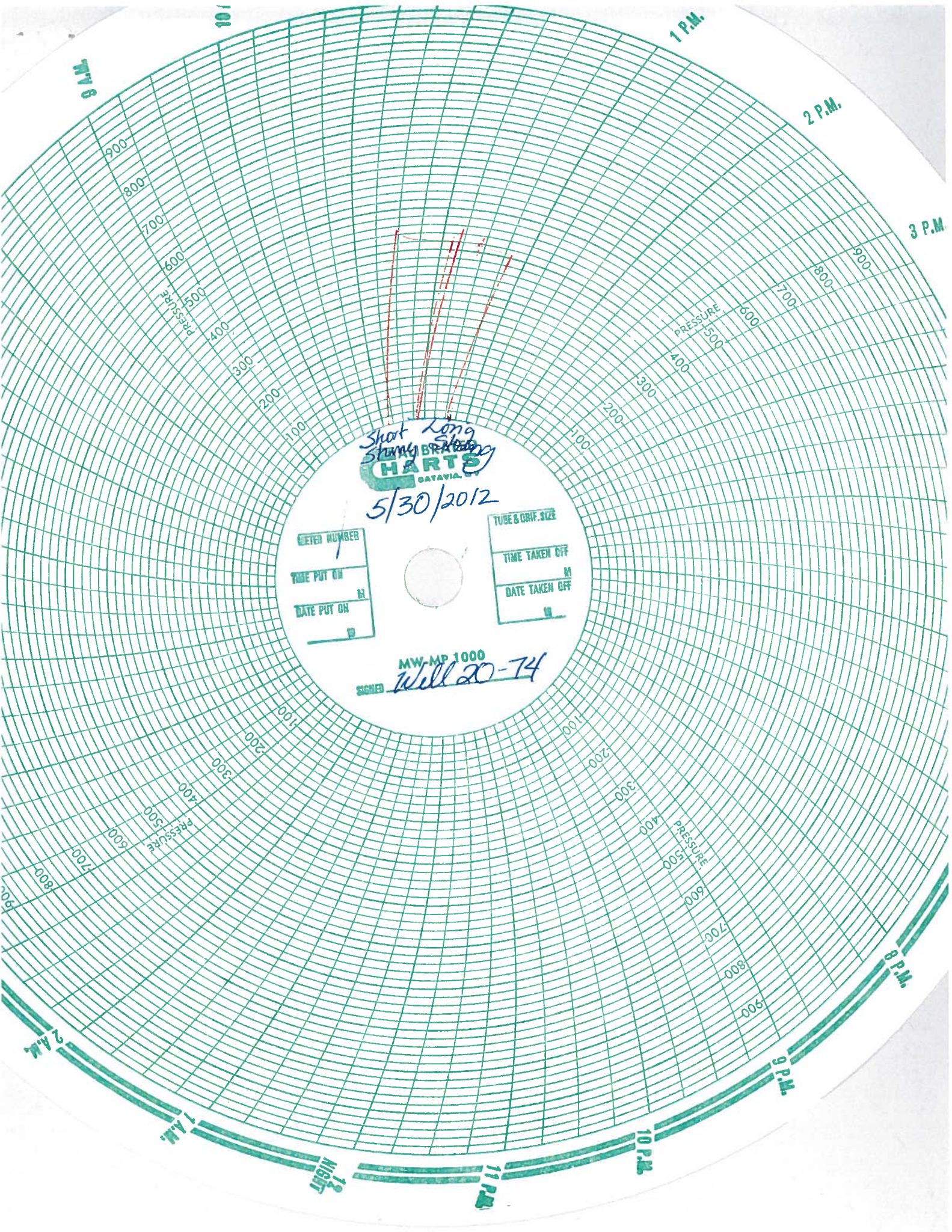
☐ NO - why not?

☐ Data Entry

☐ Compliance Staff

☐ 2<sup>nd</sup> Data Entry

☐ Hardcopy Filing



Short Long  
SHINY BRASS  
**HARTS**  
CATAVIA, NY  
5/30/2012

METER NUMBER
TIME PUT ON
DATE PUT ON

TUBE & CRIF. SIZE
TIME TAKEN OFF
DATE TAKEN OFF

MW-MP 1000  
SIGNED Will 20-74



# Mechanical Integrity Test Tubing/Casing Annulus Pressure Test

U.S. Environmental Protection Agency  
Underground Injection Control Program  
999 18<sup>th</sup> Street, Suite 200 Denver, CO 80202-2466

EPA Witness: No Witness Date: 5 / 31 / 2012

Test conducted by: Adler Hot Oil Service, Inc. (Trevor Poulsen, Jake Jackson)

Others present: Perry French (D & P Water), Celina Akin (Solvay)

<b>Well Name:</b> <u>28-21 (CO3858-04567)</u>	Type: ER SWD <span style="border: 1px solid black; padding: 0 2px;">Nahcolite</span>	Status: AC <span style="border: 1px solid black; padding: 0 2px;">TA</span> UC
Field: <u>Central Piceance Creek Basin</u>		
Location: <u>543' S &amp; 102' E NW Corner Sec: 28 T 1S R 97 W 6<sup>th</sup> PM</u> County: <u>Rio Blanco</u> State: <u>CO</u>		
Operator: <u>American Soda, L. L. P. dba Solvay Chemicals Inc. (2717 County Road 215, Parachute, CO)</u>		
Last MIT: <u>8 / 17 / 2010</u> Maximum Allowable Pressure: <u>1000</u> PSIG		

Regularly scheduled test? ☒ Yes ☐ No  
 Initial test for permit? ☐ Yes ☐ No  
 Test after well rework? ☐ Yes ☐ No

Well injecting during test? If Yes, rate: Not injecting 0 bpd

Pre-test annulus pressure: 0 psig

MIT DATA TABLE	Test #1		Test #2		Test #3	
	TUBING		PRESSURE RECORD		PRESSURE RECORD	
	Initial Pressure	N/A psig	N/A psig	N/A psig	N/A psig	N/A psig
	End of test pressure	N/A psig	N/A psig	N/A psig	N/A psig	N/A psig
	CASING/TUBING ANNULUS		PRESSURE RECORD		PRESSURE RECORD	
	7" LONG STRING		7" SHORT STRING			
0 minutes	410	psig	P & A 2008	psig	N/A	psig
5 minutes	10	psig		psig	N/A	psig
10 minutes	0	psig		psig	N/A	psig
15 minutes	0	psig		psig	N/A	psig
20 minutes	0	psig		psig	N/A	psig
25 minutes	0	psig		psig	N/A	psig
30 minutes	0	psig		psig	N/A	psig
_____ minutes	N/A	psig	N/A	psig	N/A	psig
_____ minutes	N/A	psig	N/A	psig	N/A	psig
RESULT	<input type="checkbox"/> Pass <input checked="" type="checkbox"/> Fail		<input type="checkbox"/> Pass <input type="checkbox"/> Fail		<input type="checkbox"/> Pass <input type="checkbox"/> Fail	

\* Short string plugged and abandoned in 2008.

Does the annulus pressure build back up after the test ? If Yes, \_\_\_\_\_ No \_\_\_\_\_ psig.

## MECHANICAL INTEGRITY PRESSURE TEST

Additional comments for mechanical integrity pressure test, such as volume of fluid added to annulus and bled back at end of test, reason for failing test (casing head leak, tubing leak, other), etc.:

---

The long string of Well 28-21 took 15 to 20 barrels of water to fill up the well prior to the pressure test. A maximum pressure of 410 psig was reached with an immediate drop off below 200 psig. A second attempt to pressure the well to 420 resulted in the same immediate loss of pressure. This well failed the mechanical integrity test and will be scheduled for plugging and abandonment in 2012.

---

The short string of Well 28-21 was plugged and abandoned in December 2008, thus was not tested for mechanical integrity in 2010. A welded metal cap is in place on the cemented casing.

Signature of Witness: \_\_\_\_\_

### OFFICE USE ONLY - COMPLIANCE FOLLOWUP

Staff \_\_\_\_\_ Date: \_\_\_\_/\_\_\_\_/\_\_\_\_

Do you agree with the reported test results? ☐ YES ☐ NO

If not, why?

Possible violation identified? ☐ YES ☐ NO

If YES, what

**If YES - followup initiated?** ☐ YES

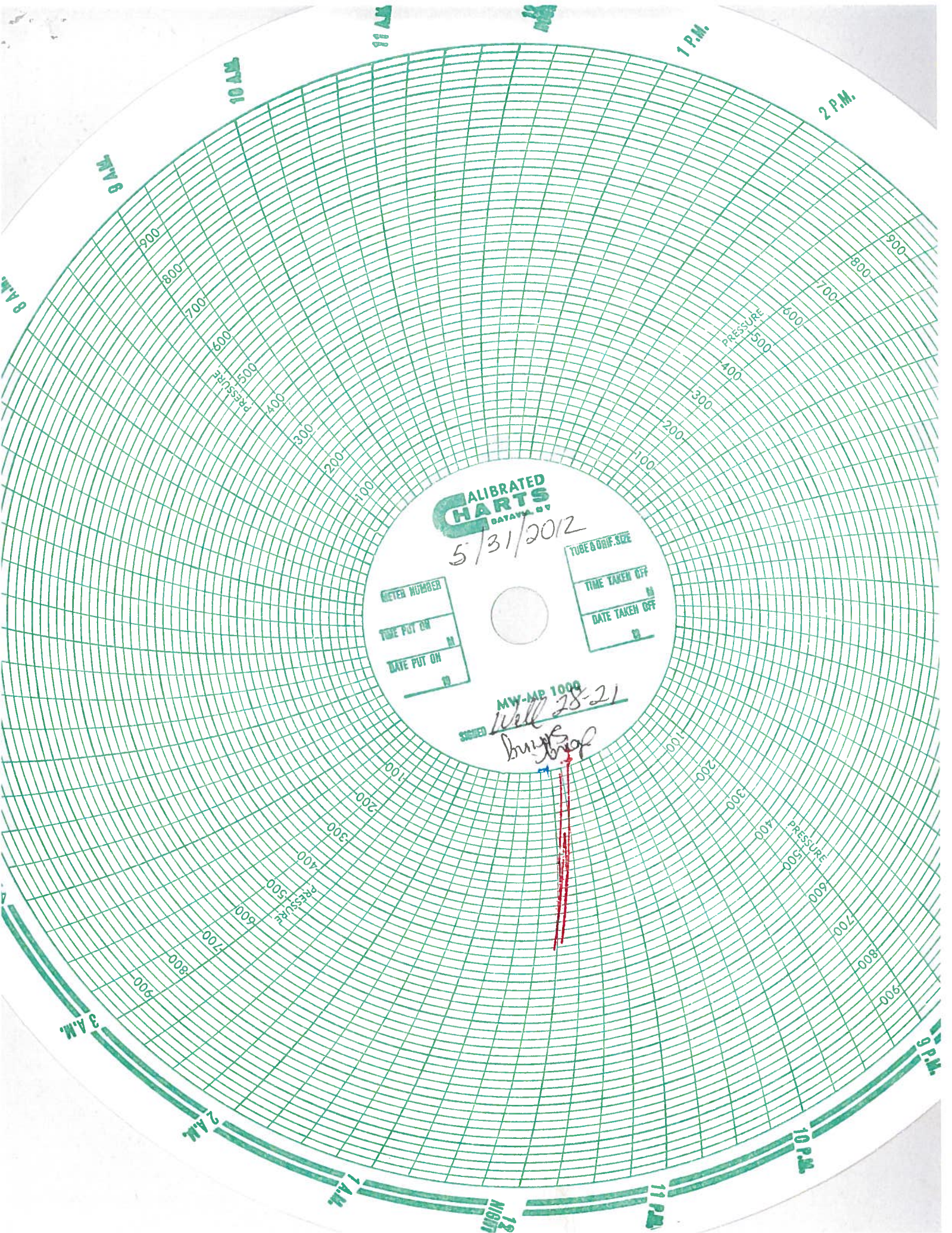
☐ NO - why not?

☐ Data Entry

☐ Compliance Staff

☐ 2<sup>nd</sup> Data Entry

☐ Hardcopy Filing



**CALIBRATED  
CHARTS**  
DATA, INC.

5/31/2012

METER NUMBER
TIME PUT ON
DATE PUT ON

TUBE & ORIF. SIZE
TIME TAKEN OFF
DATE TAKEN OFF

MW-MP 1000  
Well 28-21  
Buys  
bryf

Red vertical line drawn across the chart, starting from the center and extending downwards.



# Mechanical Integrity Test Tubing/Casing Annulus Pressure Test

U.S. Environmental Protection Agency  
Underground Injection Control Program  
999 18<sup>th</sup> Street, Suite 200 Denver, CO 80202-2466

EPA Witness: No Witness Date: 5 / 31 / 2012

Test conducted by: Adler Hot Oil Service, Inc. (Trevor Poulsen, Jake Jackson)

Others present: Perry French (D & P Water), Celina Akin (Solvay)

Well Name: <u>29-26 (CO3858-04573)</u>	Type: ER SWD <span style="border: 1px solid black; padding: 0 2px;">Nahcolite</span>	Status: AC <span style="border: 1px solid black; padding: 0 2px;">TA</span> UC
Field: <u>Central Piceance Creek Basin</u>		
Location: <u>110' S &amp; 1425' W NE Corner Sec: 29 T1S R 97 W 6<sup>th</sup> PM</u> County: <u>Rio Blanco</u> State: <u>CO</u>		
Operator: <u>American Soda, L. L. P. dba Solvay Chemicals Inc. (2717 County Road 215, Parachute, CO)</u>		
Last MIT: <u>8 / 17 / 2010</u>	Maximum Allowable Pressure: <u>1000</u> PSIG	

Regularly scheduled test? ☒ Yes ☐ No  
 Initial test for permit? ☐ Yes ☐ No  
 Test after well rework? ☐ Yes ☐ No

Well injecting during test? If Yes, rate: Not injecting 0 bpd

Pre-test annulus pressure: 0 psig

MIT DATA TABLE	Test #1		Test #2		Test #3	
	TUBING		PRESSURE RECORD		PRESSURE RECORD	
	Initial Pressure	N/A psig	N/A psig	N/A psig	N/A psig	N/A psig
	End of test pressure	N/A psig	N/A psig	N/A psig	N/A psig	N/A psig
	CASING/TUBING ANNULUS		PRESSURE RECORD		PRESSURE RECORD	
	7" SHORT STRING		7" LONG STRING			
0 minutes	420	psig	460	psig	N/A	psig
5 minutes	416	psig	459	psig	N/A	psig
10 minutes	412	psig	458	psig	N/A	psig
15 minutes	410	psig	456	psig	N/A	psig
20 minutes	408	psig	454	psig	N/A	psig
25 minutes	406	psig	452	psig	N/A	psig
30 minutes	400	psig	450	psig	N/A	psig
_____ minutes	N/A	psig	N/A	psig	N/A	psig
_____ minutes	N/A	psig	N/A	psig	N/A	psig
RESULT	<input checked="" type="checkbox"/> Pass <input type="checkbox"/> Fail		<input checked="" type="checkbox"/> Pass <input type="checkbox"/> Fail		<input type="checkbox"/> Pass <input type="checkbox"/> Fail	

Does the annulus pressure build back up after the test ? If Yes, \_\_\_\_\_ No \_\_\_\_\_ psig.

## MECHANICAL INTEGRITY PRESSURE TEST

Additional comments for mechanical integrity pressure test, such as volume of fluid added to annulus and bled back at end of test, reason for failing test (casing head leak, tubing leak, other), etc.:

---

The short string of Well 29-26 took 12 to 15 barrels of water to fill up prior to the test. A maximum pressure of 420 psi was reached with a steady drop to 400 psi over the 30 minute test period. Water was removed from the well after the test to 5 feet below ground surface to prevent freezing of the well head.

---

The long string of Well 29-26 took less than one barrel of water to fill up prior to the test. A maximum pressure of 460 psi was reached with a steady drop to 450 psi over the 30 minute test period. Water was removed from the well after the test to 5 feet below ground surface to prevent freezing of the well head.

Signature of Witness: \_\_\_\_\_

### OFFICE USE ONLY - COMPLIANCE FOLLOWUP

Staff \_\_\_\_\_ Date: \_\_\_\_/\_\_\_\_/\_\_\_\_

Do you agree with the reported test results? ☐ YES ☐ NO

If not, why?

Possible violation identified? ☐ YES ☐ NO

If YES, what

**If YES - followup initiated?** ☐ YES

☐ NO - why not?

☐ Data Entry

☐ Compliance Staff

☐ 2<sup>nd</sup> Data Entry

☐ Hardcopy Filing

8 A.M.

7 A.M.

1 P.M.

CALIBRATED  
HARTS  
CATANIA, NY

5/31/2012

METER NUMBER

TIME PUT ON

DATE PUT ON

TUBE & ORIF. SIZE

TIME TAKEN OFF

DATE TAKEN OFF

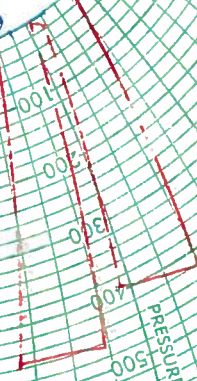
MW-MP 1000

SERIES

Well 29-26

brm  
x 100

avg 5  
line



7 A.M.

10 NIGHT

11 P.M.

10 P.M.

9 P.M.

8 P.M.

7 P.M.



# Mechanical Integrity Test Tubing/Casing Annulus Pressure Test

U.S. Environmental Protection Agency  
Underground Injection Control Program  
999 18<sup>th</sup> Street, Suite 200 Denver, CO 80202-2466

EPA Witness: No Witness Date: 5 / 31 / 2012

Test conducted by: Adler Hot Oil Service, Inc. (Trevor Poulsen, Jake Jackson)

Others present: Perry French (D & P Water), Celina Akin (Solvay)

Well Name: <u>29-27 (CO3858-04574)</u>	Type: ER SWD <span style="border: 1px solid black; padding: 0 2px;">Nahcolite</span>	Status: AC <span style="border: 1px solid black; padding: 0 2px;">TA</span> UC
Field: <u>Central Piceance Creek Basin</u>		
Location: <u>1111' S &amp; 766' W NE Corner Sec: 29 T 1S R 97 W 6<sup>th</sup> PM</u> County: <u>Rio Blanco</u> State: <u>CO</u>		
Operator: <u>American Soda, L. L. P. dba Solvay Chemicals Inc. (2717 County Road 215, Parachute, CO)</u>		
Last MIT: <u>8</u> / <u>17</u> / 2010 Maximum Allowable Pressure: <u>1000</u> PSIG		

Regularly scheduled test? ☒ Yes ☐ No  
 Initial test for permit? ☐ Yes ☐ No  
 Test after well rework? ☐ Yes ☐ No

Well injecting during test? If Yes, rate: Not injecting 0 bpd

Pre-test annulus pressure: 0 psig

MIT DATA TABLE	Test #1		Test #2		Test #3	
	TUBING		PRESSURE RECORD		PRESSURE RECORD	
	Initial Pressure	N/A psig	N/A psig	N/A psig	N/A psig	N/A psig
	End of test pressure	N/A psig	N/A psig	N/A psig	N/A psig	N/A psig
	CASING/TUBING ANNULUS		PRESSURE RECORD		PRESSURE RECORD	
	7" SHORT STRING		7" LONG STRING			
0 minutes	440	psig	440	psig	N/A	psig
5 minutes	440	psig	440	psig	N/A	psig
10 minutes	438	psig	440	psig	N/A	psig
15 minutes	436	psig	440	psig	N/A	psig
20 minutes	434	psig	440	psig	N/A	psig
25 minutes	432	psig	440	psig	N/A	psig
30 minutes	430	psig	438	psig	N/A	psig
_____ minutes	N/A	psig	N/A	psig	N/A	psig
_____ minutes	N/A	psig	N/A	psig	N/A	psig
RESULT	<input checked="" type="checkbox"/> Pass <input type="checkbox"/> Fail		<input checked="" type="checkbox"/> Pass <input type="checkbox"/> Fail		<input type="checkbox"/> Pass <input type="checkbox"/> Fail	

Does the annulus pressure build back up after the test ? If Yes, \_\_\_\_\_ No \_\_\_\_\_ psig.

## MECHANICAL INTEGRITY PRESSURE TEST

Additional comments for mechanical integrity pressure test, such as volume of fluid added to annulus and bled back at end of test, reason for failing test (casing head leak, tubing leak, other), etc.:

---

The long string of Well 29-27 took less than one barrel of water to fill up prior to the test. A maximum pressure of 440 psi was reached with a slight drop to 438 psi over the 30 minute testing time period. Water was removed from the well after the test to 5 feet below ground surface to prevent freezing of the well head.

---

The short string of Well 29-27 took less than one barrel of water to fill up prior to the test. A maximum pressure of 440 psi was reached with a gradual steady drop to 430 psi over the 30 minute testing time period. Water was removed from the well after the test to 5 feet below ground surface to prevent freezing of the well head.

Signature of Witness: \_\_\_\_\_

### OFFICE USE ONLY - COMPLIANCE FOLLOWUP

Staff \_\_\_\_\_ Date: \_\_\_\_/\_\_\_\_/\_\_\_\_

Do you agree with the reported test results? ☐ YES ☐ NO

If not, why?

Possible violation identified? ☐ YES ☐ NO

If YES, what

**If YES - followup initiated?** ☐ YES

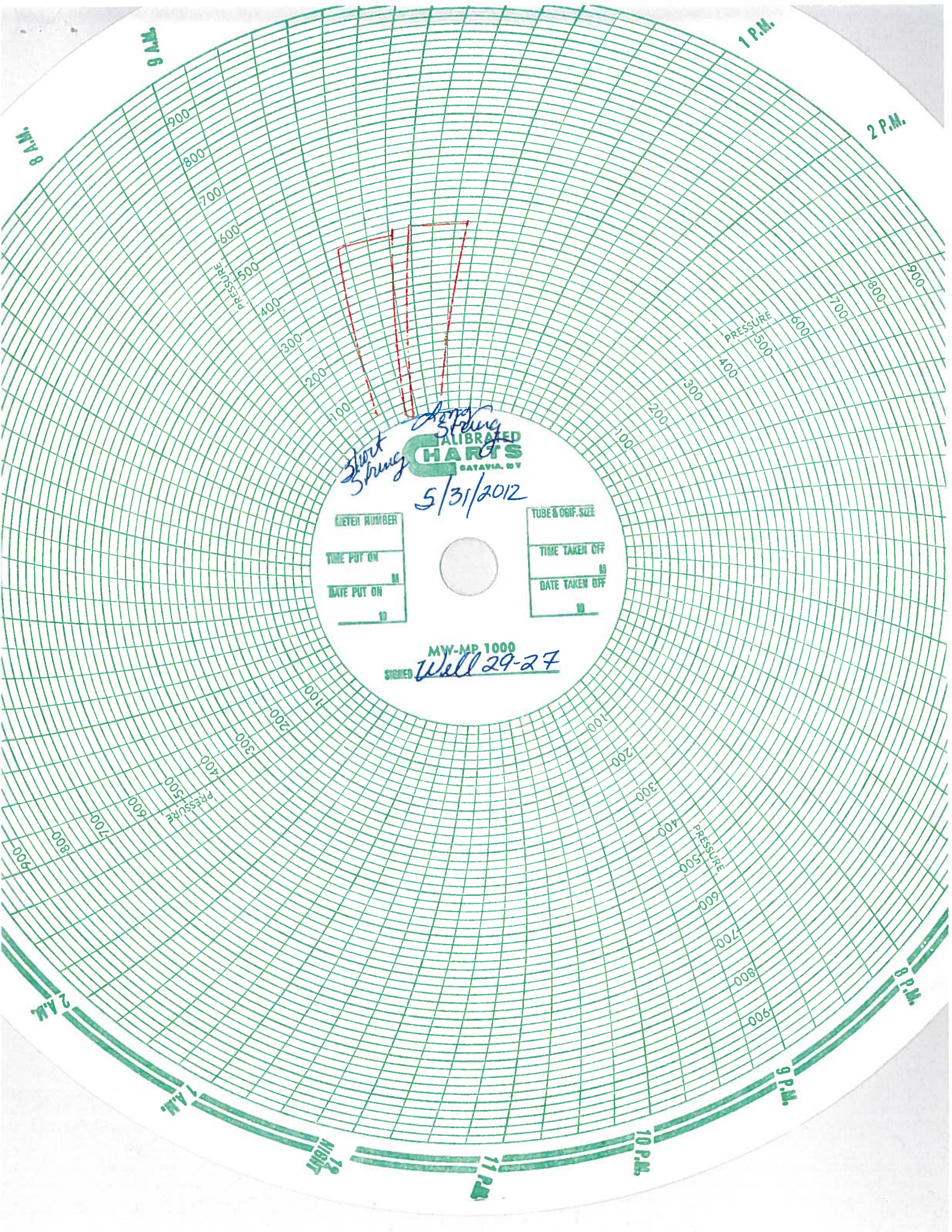
☐ NO - why not?

☐ Data Entry

☐ Compliance Staff

☐ 2<sup>nd</sup> Data Entry

☐ Hardcopy Filing



*Start Spring*  
*Stop Spring*  
**CALIBRATED CHARTS**  
CATAVIA, NY  
*5/31/2012*

METER NUMBER
TIME PUT ON
DATE PUT ON

TUBE & ORIF. SIZE
TIME TAKEN OFF
DATE TAKEN OFF

**MW-MP 1000**  
**SIGNED** *Well 29-27*



# Mechanical Integrity Test Tubing/Casing Annulus Pressure Test

U.S. Environmental Protection Agency  
Underground Injection Control Program  
999 18<sup>th</sup> Street, Suite 200 Denver, CO 80202-2466

EPA Witness: No Witness Date: 5 / 31 / 2012

Test conducted by: Adler Hot Oil Service, Inc. (Trevor Poulsen, Jake Jackson)

Others present: Perry French (D & P Water), Celina Akin (Solvay)

<b>Well Name:</b> <u>29-28 (CO3858-04575)</u>	Type: ER SWD <span style="border: 1px solid black; padding: 0 2px;">Nahcolite</span>	Status: AC <span style="border: 1px solid black; padding: 0 2px;">TA</span> UC
Field: <u>Central Piceance Creek Basin</u>		
Location: <u>646' S &amp; 1695' W NE Corner Sec: 29 T 1S R 97 W 6<sup>th</sup> PM</u> County: <u>Rio Blanco</u> State: <u>CO</u>		
Operator: <u>American Soda, L. L. P. dba Solvay Chemicals Inc. (2717 County Road 215, Parachute, CO)</u>		
Last MIT: <u>8 / 17 / 2010</u> Maximum Allowable Pressure: <u>1000</u> PSIG		

Regularly scheduled test? ☒ Yes ☐ No  
 Initial test for permit? ☐ Yes ☐ No  
 Test after well rework? ☐ Yes ☐ No

Well injecting during test? If Yes, rate: Not injecting 0 bpd  
 Pre-test annulus pressure: 0 psig

MIT DATA TABLE	Test #1		Test #2		Test #3	
	TUBING		PRESSURE RECORD		PRESSURE RECORD	
	Initial Pressure	N/A psig	N/A psig	N/A psig	N/A psig	N/A psig
	End of test pressure	N/A psig	N/A psig	N/A psig	N/A psig	N/A psig
	CASING/TUBING ANNULUS		PRESSURE RECORD		PRESSURE RECORD	
	7" LONG STRING		7" SHORT STRING			
0 minutes	422	psig	P & A 2008	psig	N/A	psig
5 minutes	421	psig		psig	N/A	psig
10 minutes	420	psig		psig	N/A	psig
15 minutes	420	psig		psig	N/A	psig
20 minutes	419	psig		psig	N/A	psig
25 minutes	419	psig		psig	N/A	psig
30 minutes	418	psig		psig	N/A	psig
_____ minutes	N/A	psig	N/A	psig	N/A	psig
_____ minutes	N/A	psig	N/A	psig	N/A	psig
RESULT	<input checked="" type="checkbox"/> Pass <input type="checkbox"/> Fail		<input type="checkbox"/> Pass <input type="checkbox"/> Fail		<input type="checkbox"/> Pass <input type="checkbox"/> Fail	

\* Short String plugged and abandoned 2008.

Does the annulus pressure build back up after the test ? If Yes, \_\_\_\_\_ No \_\_\_\_\_ psig.

## MECHANICAL INTEGRITY PRESSURE TEST

Additional comments for mechanical integrity pressure test, such as volume of fluid added to annulus and bled back at end of test, reason for failing test (casing head leak, tubing leak, other), etc.:

---

The long string of Well 29-28 took 12 to 15 barrels of water to fill up prior to the test. A maximum pressure of 422 psig was reached with a slight drop off to 418 psig over the duration of the 30 minute test. Water was removed from the well after the test to 5 feet below ground surface to prevent freezing of the well head.

---

The short string of Well 29-28 was plugged and abandoned in December 2008, thus was not tested for mechanical integrity in 2010. A welded metal cap is in place on the cemented casing.

---

Signature of Witness: \_\_\_\_\_

### OFFICE USE ONLY - COMPLIANCE FOLLOWUP

Staff \_\_\_\_\_ Date: \_\_\_\_ / \_\_\_\_ / \_\_\_\_

Do you agree with the reported test results? ☐ YES ☐ NO

If not, why?

Possible violation identified? ☐ YES ☐ NO

If YES, what

**If YES - followup initiated?** ☐ YES

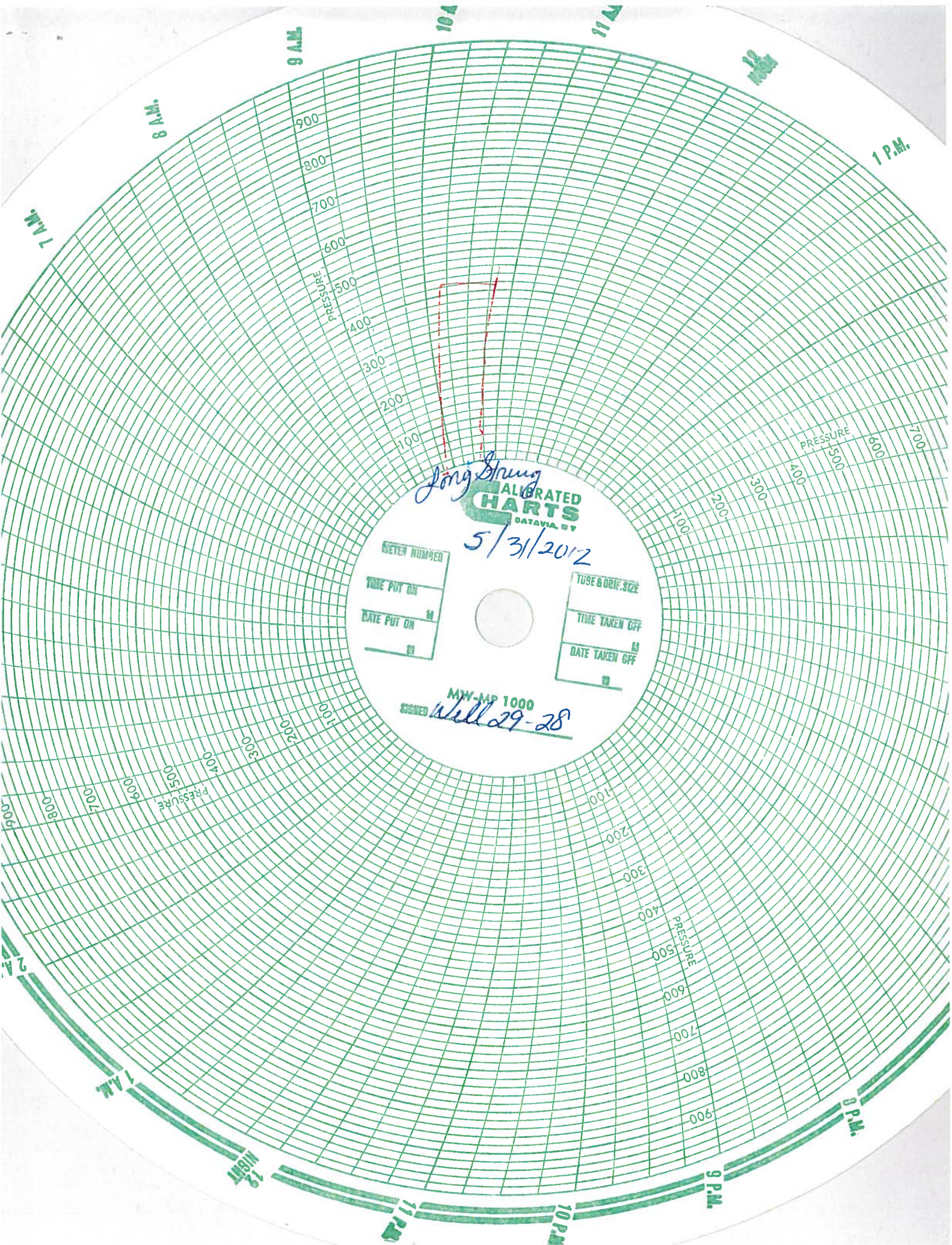
☐ NO - why not?

☐ Data Entry

☐ Compliance Staff

☐ 2<sup>nd</sup> Data Entry

☐ Hardcopy Filing



*Long Shung*  
**CALIBRATED  
HARTS**  
DATAVIA, N.Y.  
*5/31/2012*

METER NUMBER
TIME PUT ON
DATE PUT ON

TUBE & ORIF. SIZE
TIME TAKEN OFF
DATE TAKEN OFF

**MM-MP 1000**  
**SIGNED** *Will 29-28*



# Mechanical Integrity Test Tubing/Casing Annulus Pressure Test

U.S. Environmental Protection Agency  
Underground Injection Control Program  
999 18<sup>th</sup> Street, Suite 200 Denver, CO 80202-2466

EPA Witness: No Witness Date: 5 / 30 / 2012

Test conducted by: Adler Hot Oil Service, Inc. (Trevor Poulsen, Jake Jackson)

Others present: Perry French (D & P Water), Celina Akin (Solvay)

<b>Well Name:</b> <u>29-29 (CO3858-04576)</u>	Type: ER SWD <span style="border: 1px solid black; padding: 0 2px;">Nahcolite</span>	Status: AC <span style="border: 1px solid black; padding: 0 2px;">TA</span> UC
Field: <u>Central Piceance Creek Basin</u>		
Location: <u>152' S &amp; 2024' W NE Corner Sec: 29 T1S R 97 W 6<sup>th</sup> PM</u> County: <u>Rio Blanco</u> State: <u>CO</u>		
Operator: <u>American Soda, L. L. P. dba Solvay Chemicals Inc. (2717 County Road 215, Parachute, CO)</u>		
Last MIT: <u>8</u> / <u>17</u> / 2010	Maximum Allowable Pressure: <u>1000</u> PSIG	

Regularly scheduled test? ☒ Yes ☐ No  
 Initial test for permit? ☐ Yes ☐ No  
 Test after well rework? ☐ Yes ☐ No

Well injecting during test? If Yes, rate: Not injecting 0 bpd

Pre-test annulus pressure: 0 psig

MIT DATA TABLE		Test #1		Test #2		Test #3	
TUBING				PRESSURE RECORD			
Initial Pressure		N/A	psig	N/A	psig	N/A	psig
End of test pressure		N/A	psig	N/A	psig	N/A	psig
CASING/TUBING ANNULUS				PRESSURE RECORD			
	7" SHORT STRING			7" LONG STRING			
0 minutes	422	psig		440	psig	N/A	psig
5 minutes	422	psig		440	psig	N/A	psig
10 minutes	422	psig		439	psig	N/A	psig
15 minutes	421	psig		438	psig	N/A	psig
20 minutes	400	psig		436	psig	N/A	psig
25 minutes	400	psig		434	psig	N/A	psig
30 minutes	400	psig		430	psig	N/A	psig
_____ minutes	N/A	psig		426	psig	N/A	psig
_____ minutes	N/A	psig		N/A	psig	N/A	psig
RESULT		[ <input checked="" type="checkbox"/> ] Pass [ <input type="checkbox"/> ] Fail		[ <input checked="" type="checkbox"/> ] Pass [ <input type="checkbox"/> ] Fail		[ <input type="checkbox"/> ] Pass [ <input type="checkbox"/> ] Fail	

Does the annulus pressure build back up after the test ? If Yes, \_\_\_\_\_ No \_\_\_\_\_ psig.

## MECHANICAL INTEGRITY PRESSURE TEST

Additional comments for mechanical integrity pressure test, such as volume of fluid added to annulus and bled back at end of test, reason for failing test (casing head leak, tubing leak, other), etc.:

---

The short string of Well 29-29 took less 12 to 15 barrels of water to fill up prior to the test. A maximum pressure of 422 psig was reached with a slight drop over the duration of the 30 minute test to 400 psig. Water was removed from the well after the test to 5 feet below ground surface to prevent freezing of the well head.

---

The long string of Well 29-29 took less than 1 barrel of water to fill up prior to the test. A maximum pressure of 440 psi was reached with a gradual drop to approximately 426 psig over the 30 minute test period. Water was removed from the well after the test to 5 feet below ground surface to prevent freezing of the well head.

Signature of Witness: \_\_\_\_\_

### OFFICE USE ONLY - COMPLIANCE FOLLOWUP

Staff \_\_\_\_\_ Date: \_\_\_\_/\_\_\_\_/\_\_\_\_

Do you agree with the reported test results? ☐ YES ☐ NO

If not, why?

Possible violation identified? ☐ YES ☐ NO

If YES, what

**If YES - followup initiated?** ☐ YES

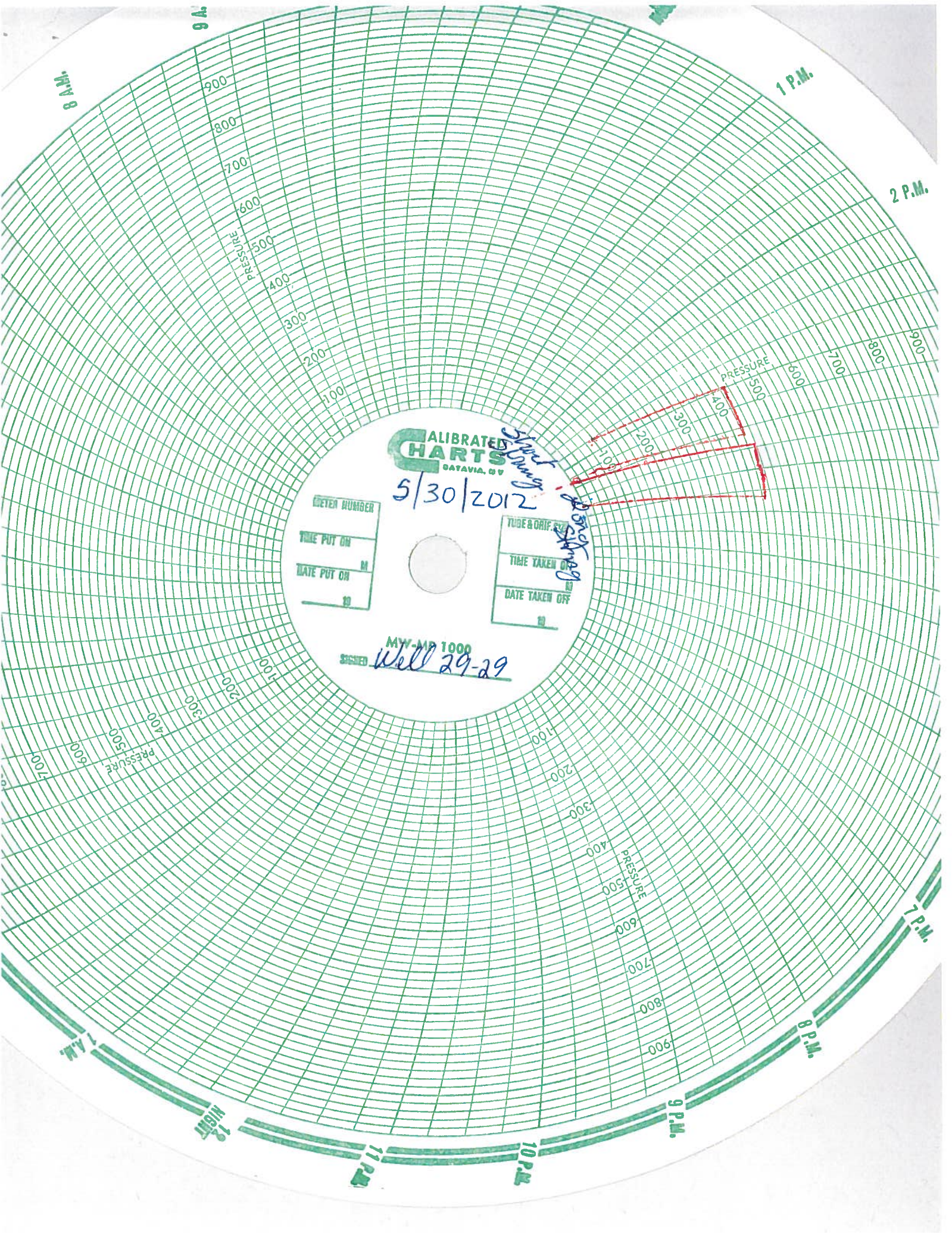
☐ NO - why not?

☐ Data Entry

☐ Compliance Staff

☐ 2<sup>nd</sup> Data Entry

☐ Hardcopy Filing



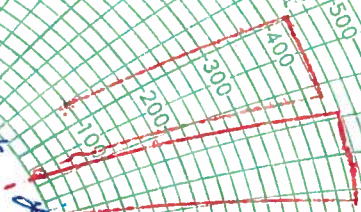
**CALIBRATED  
CHARTS**  
DATAVIA, NV

5/30/2012

CHART NUMBER  
TIME PUT ON  
DATE PUT ON

TIDE & CHIF.  
TIME TAKEN ON  
DATE TAKEN OFF

MY-MD 1000  
SIGNED Will 29-29





# Mechanical Integrity Test Tubing/Casing Annulus Pressure Test

U.S. Environmental Protection Agency  
Underground Injection Control Program  
999 18<sup>th</sup> Street, Suite 200 Denver, CO 80202-2466

EPA Witness: No Witness Date: 5 / 30 / 2012

Test conducted by: Adler Hot Oil Service, Inc. (Trevor Poulsen, Jake Jackson)

Others present: Perry French (D & P Water), Celina Akin (Solvay)

Well Name: <u>29-34 (CO3858-04577)</u>	Type: ER SWD <span style="border: 1px solid black; padding: 0 2px;">Nahcolite</span>	Status: AC <span style="border: 1px solid black; padding: 0 2px;">TA</span> UC
Field: <u>Central Piceance Creek Basin</u>		
Location: <u>99' N &amp; 2490' E NW Corner Sec: 29 T 1S R 97 W 6<sup>th</sup> PM</u> County: <u>Rio Blanco</u> State: <u>CO</u>		
Operator: <u>American Soda, L. L. P. dba Solvay Chemicals Inc. (2717 County Road 215, Parachute, CO)</u>		
Last MIT: <u>8 / 17 / 2010</u>	Maximum Allowable Pressure: <u>1000</u>	PSIG

Regularly scheduled test? ☒ Yes ☐ No  
 Initial test for permit? ☐ Yes ☐ No  
 Test after well rework? ☐ Yes ☐ No

Well injecting during test? If Yes, rate: Not injecting 0 bpd

Pre-test annulus pressure: 0 psig

MIT DATA TABLE	Test #1		Test #2		Test #3	
	TUBING		PRESSURE RECORD		PRESSURE RECORD	
	Initial Pressure	N/A psig	N/A psig	N/A psig	N/A psig	N/A psig
	End of test pressure	N/A psig	N/A psig	N/A psig	N/A psig	N/A psig
	CASING/TUBING ANNULUS		PRESSURE RECORD		PRESSURE RECORD	
	7" SHORT STRING		7" LONG STRING			
0 minutes	P&A 2010	psig	440	psig	N/A	psig
5 minutes	0	psig	440	psig	N/A	psig
10 minutes	0	psig	440	psig	N/A	psig
15 minutes	0	psig	440	psig	N/A	psig
20 minutes	0	psig	440	psig	N/A	psig
25 minutes	0	psig	440	psig	N/A	psig
30 minutes	0	psig	440	psig	N/A	psig
_____ minutes	N/A	psig	N/A	psig	N/A	psig
_____ minutes	N/A	psig	N/A	psig	N/A	psig
RESULT	<input type="checkbox"/> Pass <input checked="" type="checkbox"/> Fail		<input checked="" type="checkbox"/> Pass <input type="checkbox"/> Fail		<input type="checkbox"/> Pass <input type="checkbox"/> Fail	

**Does the annulus pressure build back up after the test ?** If Yes, \_\_\_\_\_ No \_\_\_\_\_ psig.

## MECHANICAL INTEGRITY PRESSURE TEST

Additional comments for mechanical integrity pressure test, such as volume of fluid added to annulus and bled back at end of test, reason for failing test (casing head leak, tubing leak, other), etc.:

---

The long string of Well 29-34 took less than one barrel of water to fill up prior to the test. A maximum pressure of 440 psig was reached and sustained over the duration of the 30 minute test. Water was removed from the well after the test to 5 feet below ground surface to prevent freezing of the well head.

---

The short string of Well 29-34 was plugged and abandoned on October 15, 2010. A welded metal cap is in place on the cemented casing.

---

---

Signature of Witness: \_\_\_\_\_

### OFFICE USE ONLY - COMPLIANCE FOLLOWUP

Staff \_\_\_\_\_ Date: \_\_\_\_ / \_\_\_\_ / \_\_\_\_

Do you agree with the reported test results? ☐ YES ☐ NO

If not, why?

Possible violation identified? ☐ YES ☐ NO

If YES, what

**If YES - followup initiated?** ☐ YES

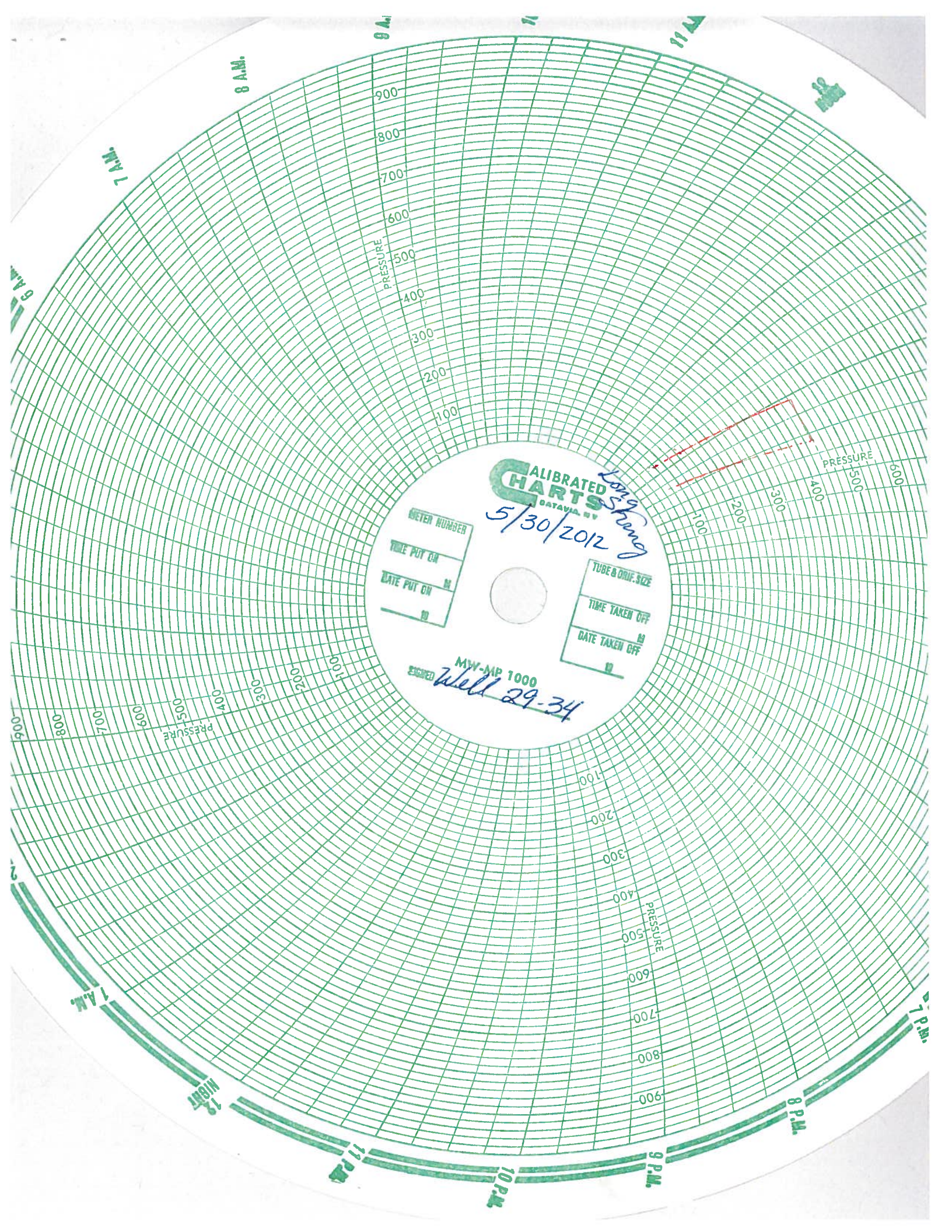
☐ NO - why not?

☐ Data Entry

☐ Compliance Staff

☐ 2<sup>nd</sup> Data Entry

☐ Hardcopy Filing



CALIBRATED  
CHARTS  
DATAVIA, NY

5/30/2012

METER NUMBER

TIME PUT ON

DATE PUT ON

TUBE & ORIF. SIZE

TIME TAKEN OFF

DATE TAKEN OFF

MW-MP 1000

Well 29-34



# Mechanical Integrity Test Tubing/Casing Annulus Pressure Test

U.S. Environmental Protection Agency  
Underground Injection Control Program  
999 18<sup>th</sup> Street, Suite 200 Denver, CO 80202-2466

EPA Witness: No Witness Date: 5 / 30 / 2012

Test conducted by: Adler Hot Oil Service, Inc. (Trevor Poulsen, Jake Jackson)

Others present: Perry French (D & P Water), Celina Akin (Solvay)

Well Name: <u>29-78 (CO3858-04657)</u>	Type: ER SWD <span style="border: 1px solid black; padding: 0 2px;">Nahcolite</span>	Status: AC <span style="border: 1px solid black; padding: 0 2px;">TA</span> UC
Field: <u>Central Piceance Creek Basin</u>		
Location: <u>412' S &amp; 2159' W NE Corner Sec: 29 T1S R 97 W 6<sup>th</sup> PM</u> County: <u>Rio Blanco</u> State: <u>CO</u>		
Operator: <u>American Soda, L. L. P. dba Solvay Chemicals Inc. (2717 County Road 215, Parachute, CO)</u>		
Last MIT: <u>8</u> / <u>17</u> / <u>2010</u> Maximum Allowable Pressure: <u>1000</u> PSIG		

Regularly scheduled test? ☒ Yes ☐ No  
 Initial test for permit? ☐ Yes ☐ No  
 Test after well rework? ☐ Yes ☐ No

Well injecting during test? If Yes, rate: Not injecting 0 bpd

Pre-test annulus pressure: 0 psig

MIT DATA TABLE	Test #1		Test #2		Test #3	
	TUBING		PRESSURE RECORD		PRESSURE RECORD	
	Initial Pressure	N/A psig	N/A psig	N/A psig	N/A psig	N/A psig
	End of test pressure	N/A psig	N/A psig	N/A psig	N/A psig	N/A psig

CASING/TUBING ANNULUS		PRESSURE RECORD			
	7" SHORT STRING*	7" LONG STRING			
0 minutes	P & A 2006 psig	438 psig	N/A	psig	
5 minutes	N/A psig	438 psig	N/A	psig	
10 minutes	N/A psig	438 psig	N/A	psig	
15 minutes	N/A psig	438 psig	N/A	psig	
20 minutes	N/A psig	438 psig	N/A	psig	
25 minutes	N/A psig	438 psig	N/A	psig	
30 minutes	N/A psig	438 psig	N/A	psig	
_____ minutes	N/A psig	N/A psig	N/A	psig	
_____ minutes	N/A psig	N/A psig	N/A	psig	

RESULT	<input type="checkbox"/> Pass	<input type="checkbox"/> Fail	<input checked="" type="checkbox"/> Pass	<input type="checkbox"/> Fail	<input type="checkbox"/> Pass	<input type="checkbox"/> Fail
--------	-------------------------------	-------------------------------	--	-------------------------------	-------------------------------	-------------------------------

\* Short String Plugged and Abandoned in 2006.

**Does the annulus pressure build back up after the test ?** If Yes, \_\_\_\_\_ No \_\_\_\_\_ psig.

## MECHANICAL INTEGRITY PRESSURE TEST

Additional comments for mechanical integrity pressure test, such as volume of fluid added to annulus and bled back at end of test, reason for failing test (casing head leak, tubing leak, other), etc.:

---

The long string of Well 29-78 required less than one barrel of water to fill up prior to the test. The well was pressurized to 438 psig and sustained that pressure for the duration of the 30 minute test. Water was removed from the well after the test to 5 feet below ground surface to prevent freezing of the well head.

---

The short string of Well 29-78 was plugged and abandoned in 2006.

Signature of Witness: \_\_\_\_\_

### OFFICE USE ONLY - COMPLIANCE FOLLOWUP

Staff \_\_\_\_\_ Date: \_\_\_\_/\_\_\_\_/\_\_\_\_

Do you agree with the reported test results? ☐ YES ☐ NO

If not, why?

Possible violation identified? ☐ YES ☐ NO

If YES, what

**If YES - followup initiated?** ☐ YES

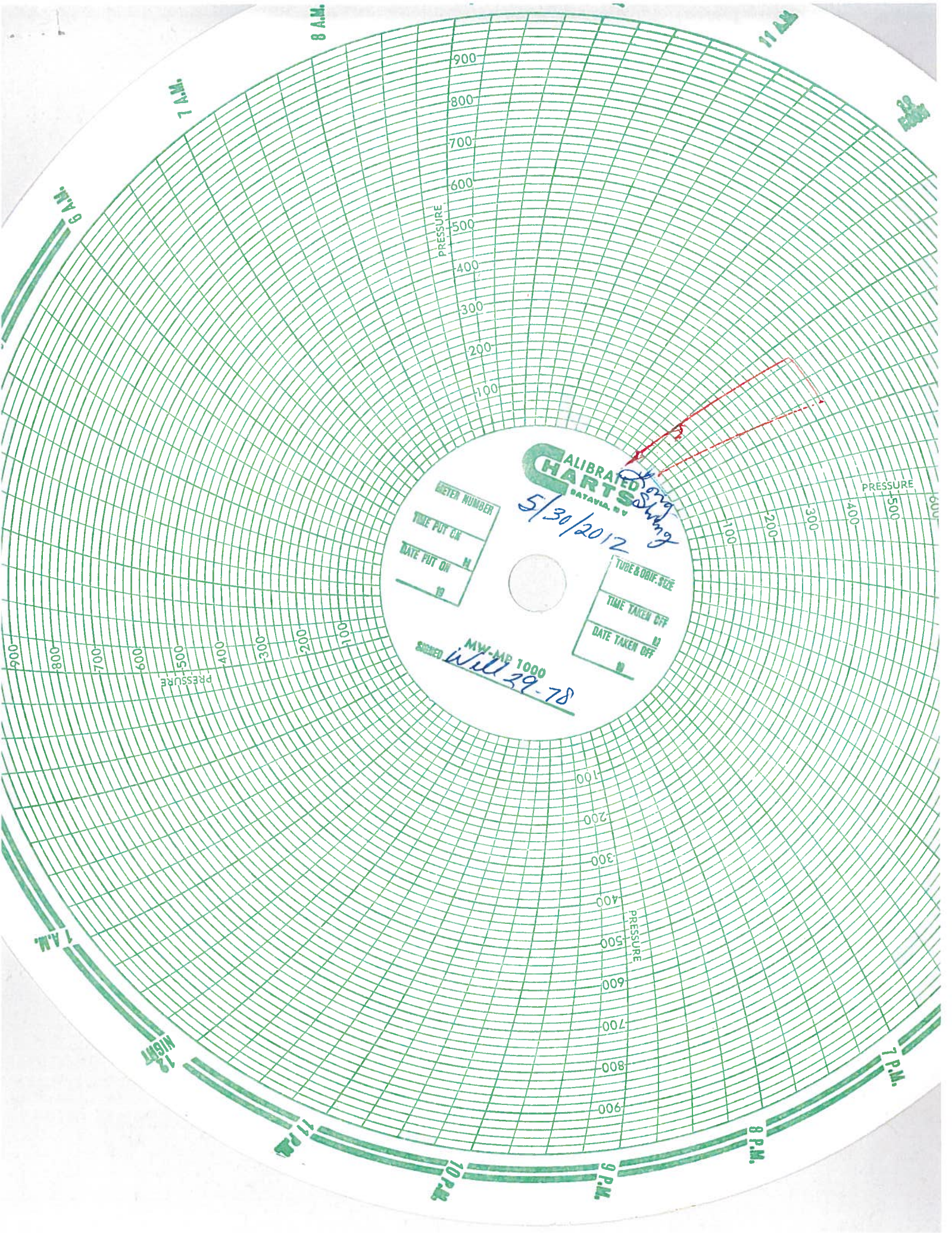
☐ NO - why not?

☐ Data Entry

☐ Compliance Staff

☐ 2<sup>nd</sup> Data Entry

☐ Hardcopy Filing



**CALIBRATED CHARTS**  
PATENTED  
5/30/2012  
D. S. King

METER NUMBER	
TIME PUT ON	11
DATE PUT ON	11

TUBE & ORIF. SIZE	
TIME TAKEN OFF	11
DATE TAKEN OFF	11

MW-100 1000  
SIGNED Will 29-78

