



STATE OF
COLORADO

Simmons - DNR, Leigh <leigh.simmons@state.co.us>

C1980007, West Elk Mine, December Inspection Report

Simmons - DNR, Leigh <leigh.simmons@state.co.us>

Wed, Dec 10, 2025 at 12:00 PM

To: "Wilczek, Jessica A." <JessicaWilczek@coreresources.com>

Cc: "Stafford, Natalie" <NatalieStafford@coreresources.com>, JoshuaThompson@coreresources.com

Please find the inspection report attached.

Leigh Simmons
Environmental Protection Specialist



COLORADO
Division of Reclamation,
Mining and Safety
Department of Natural Resources

P [720.220.1180](https://www.colorado.gov/p3/720.220.1180)

Physical address: 1313 Sherman Street, Room 215, Denver, CO 80203

Mailing address: Colorado Division of Reclamation, Mining and Safety, Room 215, 1001 E 62nd Avenue, Denver, CO 80216

leigh.simmons@state.co.us | <https://drms.colorado.gov>




INSP-REPORTC_C1980007_LDS_12102025110612.pdf
5302K



PERMIT INFORMATION

Permit Number: C-1980-007 Mine Name: West Elk Mine Operator: Mountain Coal Company, LLC Operator Address: Jessica Wilczek 5174 Highway 133 Somerset, CO 81434	County: Delta, Gunnison Operation Type: Underground Permit Status: Active Ownership: Private
	Operator Representative Present: Josh Thompson
Operator Representative Signature: (Field Issuance Only) 	

INSPECTION INFORMATION

Inspection Start Date: December 9, 2025 Inspection Start Time: 09:30 Inspection End Date: Inspection End Time:		Inspection Type: Coal Complete Inspection Inspection Reason: Normal I&E Program Weather: Clear	
Joint Inspection Agency: None		Joint Inspection Contacts:	
Post Inspection Agency: None		Post Inspection Contacts:	
Inspector(s): Leigh Simmons	Inspector's Signature: 		Signature Date: December 10, 2025

Inspection Topic Summary

NOTE: Y=Inspected N=Not Inspected R=Comments Noted V=Violation Issued NA=Not Applicable

R - Air Resource Protection**N** - Roads**R** - Availability of Records**N** - Reclamation Success**N** - Backfill & Grading**N** - Revegetation**N** - Excess Spoil and Dev. Waste**N** - Subsidence**N** - Explosives**N** - Slides and Other Damage**N** - Fish & Wildlife**R** - Support Facilities On-site**R** - Hydrologic Balance**Y** - Signs and Markers**R** - Gen. Compliance With Mine Plan**N** - Support Facilities Not On-site**N** - Other**N** - Special Categories Of Mining**R** - Processing Waste**Y** - Topsoil**COMMENTS**

This was a complete inspection by Leigh Simmons of the Division of Reclamation, Mining and Safety (Division). The weather was clear and dry, but with snow on the ground. The mine was active. The inspection was accompanied by Josh Thompson of Mountain Coal Company (MCC).

AIR RESOURCE PROTECTION – Rule 4.17:

Two new mobile flares had been brought to the site but had not yet been installed on MVBs. Necessary permitting with the Air Pollution Control Division was in progress.

AVAILABILITY OF RECORDS – Rule 5.02.4(1):

Records were available on a public access laptop at the mine office. Details are given at the end of this report.

HYDROLOGIC BALANCE - Rule 4.05

Drainage Control 4.05.1, 4.05.2, 4.05.3; Siltation Structures 4.05.5, 4.05.6; Discharge Structures 4.05.7, 4.05.10; Diversions 4.05.4; Effluent Limits 4.05.2; Ground Water Monitoring 4.05.13; Surface Water Monitoring 4.05.13; Drainage – Acid and Toxic Materials 4.05.8; Impoundments 4.05.6, 4.05.9; Stream Buffer Zones 4.05.18:

The damaged liner had been removed from the SG-1 pond, and work was in progress to clear accumulated snow from the pond. A new liner had been brought to the site and was expected to be installed the following day. MCC's intention was to use scraps from the new liner to patch holes in the RPE pond in the short term, until the full liner can be replaced.

GENERAL MINE PLAN COMPLIANCE:

A new Safety Supervisor had been hired, Mike Zimmerman, filling a vacant position.

Longwall mining of the LWB26 panel was in progress at around cross cut 51 on the headgate.

Development of the B27 headgate was in progress, at around cross cut 53.

All fines that had been stockpiled at Stack Tube 5 on the Run-of-Mine coal stockpile pad had been removed. Fines placed on the LRP were still in place but would likely be removed in 2026.

Number of Partial Inspection this Fiscal Year: 4

Number of Complete Inspections this Fiscal Year: 2

The installation of pumpable cribbing in the B26 development workings was complete and the contractors had demobilized from the Deer Creek vent shaft pad and left the site.

PROCESSING WASTE/COAL MINE WASTE PILES – Rule 4.10 and 4.11

Drainage Control; Surface Stabilization; Placement:

The prep plant was in operation at the time of the inspection. New processing waste was being temporarily placed on the RPE; no waste was being transported to the RPEE.

SUPPORT FACILITIES - Rule 4.04:

Siding had been replaced on the prep plant, so that the plant could resume operation. One more side of the building was expected to be re-sided at some point in the future, when weather and operational conditions are suitable.

Installation of the new nitrogen generation facility was complete, MCC were waiting on a representative from the vendor, Atlas Copco, to sign off on the system and bring it into operation.

Three new MVB pads (B26-2, -3 and -4, permitted with TR-158) had been constructed by D and S Underground. Drilling of the first of two holes was in progress on the B26-2 pad; the drilling contractor was RACS. The pads were level with a berm around the edge, mud pits were also bermed. Topsoil had been stockpiled.

DOCUMENTS RECEIVED

N/A

OTHER (SPECIFY)

N/A

ENFORCEMENT ACTIONS/COMPLIANCE

No enforcement actions were initiated as a result of this inspection, nor are any pending.

Number of Partial Inspection this Fiscal Year: 4

Number of Complete Inspections this Fiscal Year: 2

MAPS & PHOTOGRAPHS



Figure 1: Screenshot of inspection map, showing GPS locations of three new pads (green points) overlain on semi-transparent pad layout map approved with TR-158 and aerial image.

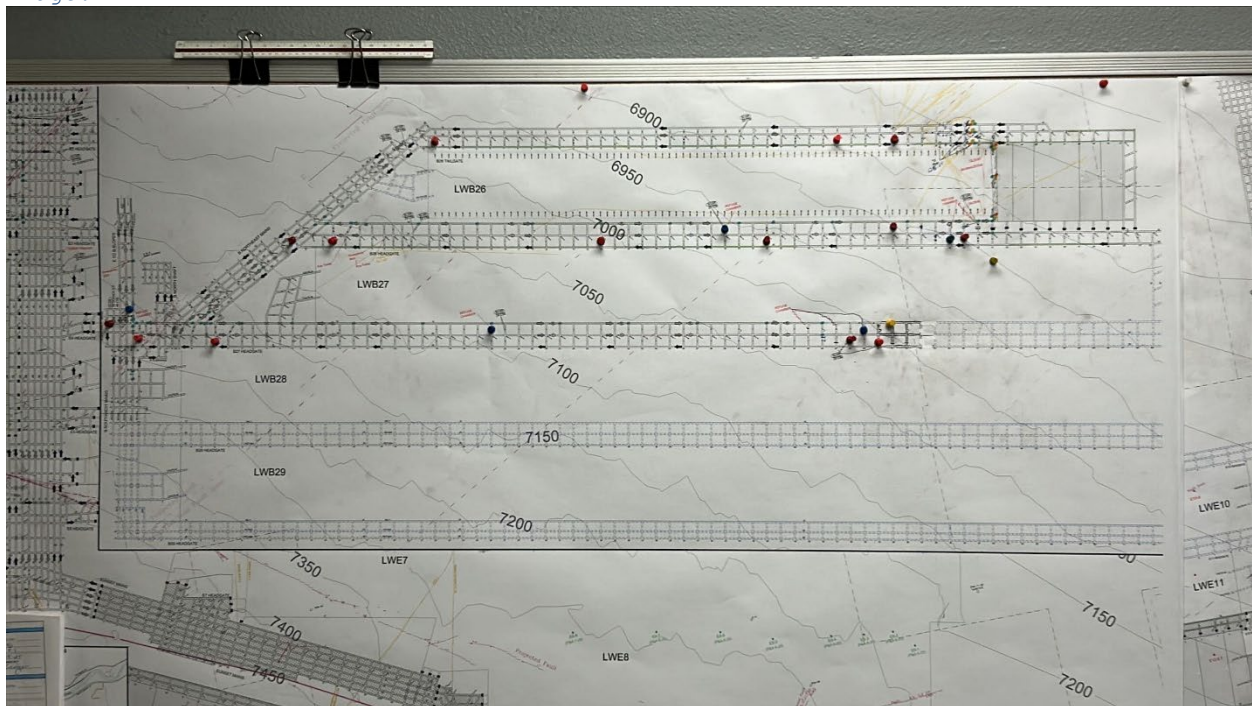


Figure 2: Mine map showing B-seam mine workings

Number of Partial Inspection this Fiscal Year: 4

Number of Complete Inspections this Fiscal Year: 2

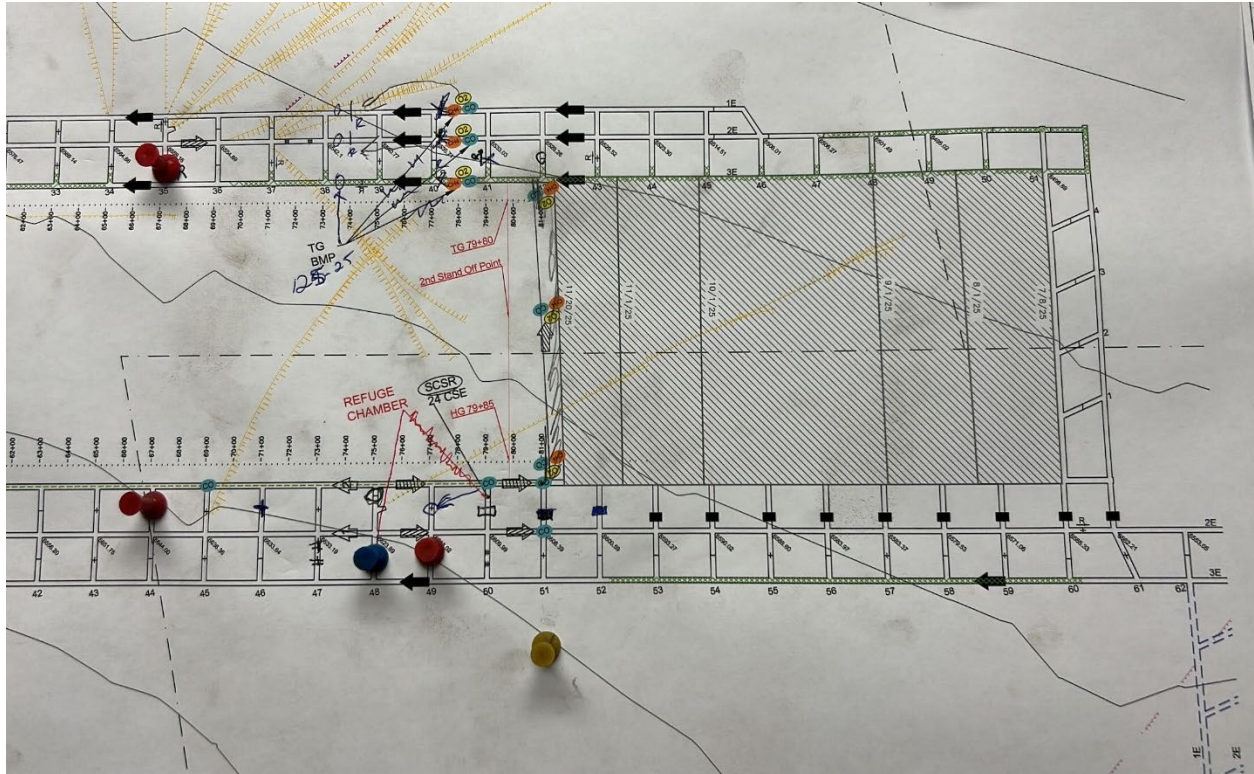


Figure 3: Mine map, showing longwall progress in B26 panel

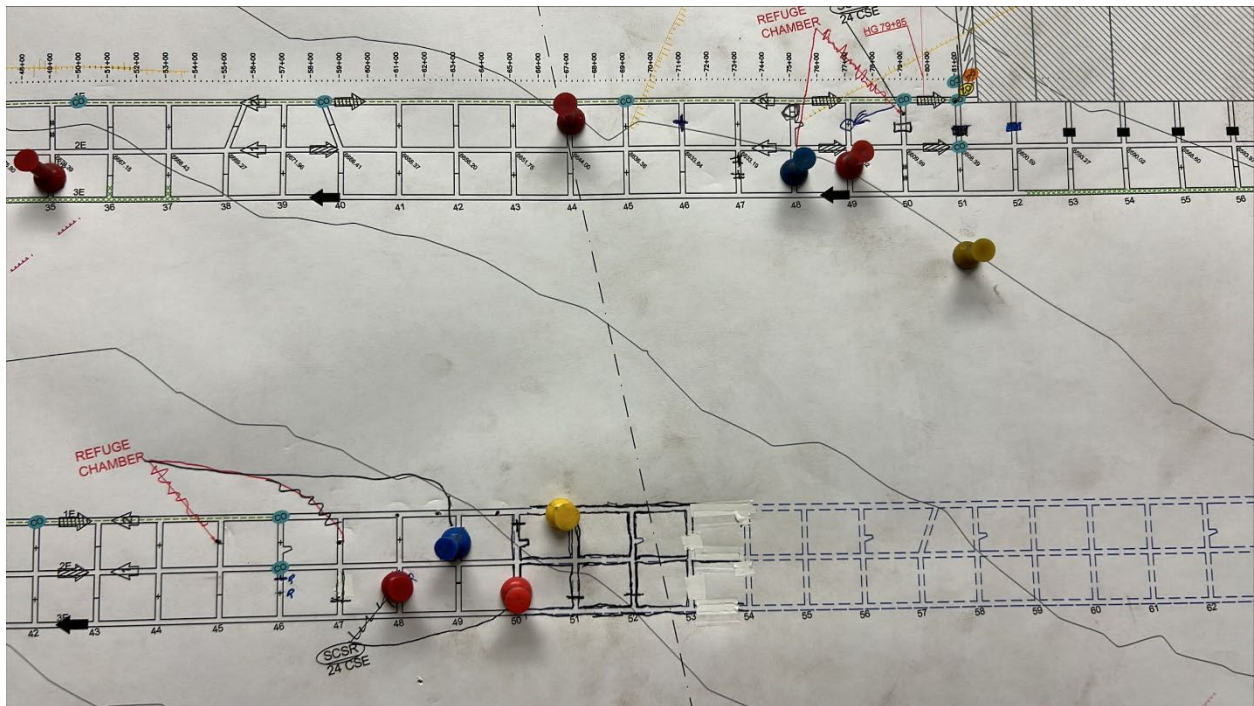


Figure 4: Mine map showing development progress in B27 head gate

Number of Partial Inspection this Fiscal Year: 4

Number of Complete Inspections this Fiscal Year: 2



Figure 5: Prep plant



Figure 6: SG-1 pond, being prepared for installation of new liner

Number of Partial Inspection this Fiscal Year: 4

Number of Complete Inspections this Fiscal Year: 2



Figure 7: Processing waste being generated



Figure 8: Processing waste being temporarily placed on RPE

Number of Partial Inspection this Fiscal Year: 4

Number of Complete Inspections this Fiscal Year: 2



Figure 9: Run-of-Mine coal stockpile pad from west, showing fines completely removed

Number of Partial Inspection this Fiscal Year: 4

Number of Complete Inspections this Fiscal Year: 2



Figure 10: No activity at silos

Number of Partial Inspection this Fiscal Year: 4

Number of Complete Inspections this Fiscal Year: 2



Figure 11: Drill rig on B26-2

Number of Partial Inspection this Fiscal Year: 4

Number of Complete Inspections this Fiscal Year: 2



Figure 12: Mud pit on B26-2

Number of Partial Inspection this Fiscal Year: 4

Number of Complete Inspections this Fiscal Year: 2



Figure 13: Second mud pit on B26-2 under construction

Number of Partial Inspection this Fiscal Year: 4

Number of Complete Inspections this Fiscal Year: 2



Figure 14: Berm on B26-2

Number of Partial Inspection this Fiscal Year: 4

Number of Complete Inspections this Fiscal Year: 2



Figure 15: Mud pit on B26-3

Number of Partial Inspection this Fiscal Year: 4

Number of Complete Inspections this Fiscal Year: 2



Figure 16: Drilling equipment and materials staged on B26-3

Number of Partial Inspection this Fiscal Year: 4

Number of Complete Inspections this Fiscal Year: 2



Figure 17: B26-4 pad newly constructed



Figure 18: B26-4 pad level and compacted

Number of Partial Inspection this Fiscal Year: 4

Number of Complete Inspections this Fiscal Year: 2



Figure 19: Berm on B26-4 pad

Number of Partial Inspection this Fiscal Year: 4

Number of Complete Inspections this Fiscal Year: 2



Figure 20: Mud pit on B26-4 pad

Number of Partial Inspection this Fiscal Year: 4

Number of Complete Inspections this Fiscal Year: 2

AVAILABILITY OF RECORDS**PERMIT RECORDS**

DRMS Permit Expires 7/31/26
Permit Application w/Revisions LF
Findings Document RN-8, 6/1/2022

Insurance Certificate Expires 11/1/26
Bond Document \$5M & \$10M
Phased Bond Release Thru SL-17
Documents/Findings
Air Emission Permits*2 09GU1382
 10GU1130
 13GU1462

County Special Use Permits N/A

UG Mining Landowner Notification Yes
Subsidence Monitoring Reports Spring 2025
Subsidence Monitoring Data Q1 2025
Rill & Gully Survey N/A

Vegetation Monitoring Data SL-17
Specific Variance Approvals Stream buffer zone

Annual Reclamation Reports 2024
Midterm Review Documents MT-09
DRMS/OSM Inspection Through 11/25
Reports/Enforcement Actions (3 Years)

Transfers/Succession of Operator Yes
Temporary Cessation Notification N/A
Reclamation Cost Estimate MT-09

CERTIFICATIONS
Pond Certifications Yes
Annual Certifications for N/A

Impoundments**Fill Certifications for Excess Spoil or Underground Development Waste**

• Quarterly Inspections	Q3 2025
• Compaction Testing	Q3 2025
• Final Certification	N/A

Coal Processing Waste Banks	Yes
Haul Road Certifications	Yes
Access Road Certifications	Yes

COMMENTS:

*1 The renewed CDPS permit is the subject of ongoing litigation. The most recent action was the publication of the Appeals Court opinion on 7/10/2025. The permit has been administratively extended

*2 Additional Records on the flash drive have not recently been updated

HYDROLOGIC RECORDS

NPDES Permit Exp 9/30/24, *1
NPDES Records Through
Stormwater Management Plan 2/23/2023

SPCC Plan 3/4/2022
MSHA Pond Inspections N/A
State Engineer's Pond Inspection 10/23/2018
Quarterly Pond Inspections Q3 2025

Annual Hydrology Reports 6/25 for 2024 water year
 Yes

- **Ground Water Monitoring**
- **Surface Water Monitoring** Yes
- **Spring & Seep Monitoring** Yes
- **Mine Water Discharge Monitoring** Yes
- **Mine Inflow Study** Yes
- **Water Consumption** Yes

Records
Well Permits Yes

BLASTING RECORDS

Blasting Publication N/A
Blasting Records (3 years) N/A
ATFE Explosives Permit Expires 6/1/27
Blasting Variances N/A
Pre-Blast Surveys N/A

ADDITIONAL RECORDS*2 (specify)

Monthly Air Quality Cert.	Through 11/24
Rock Dust Maintenance	Through 5/25
Monthly Stormwater Outfall Inspections	Through 5/25
RCRA/ Haz waste	Through 5/25

Number of Partial Inspection this Fiscal Year: 4

Number of Complete Inspections this Fiscal Year: 2