

Monday, August 18, 2025 3:13:35 PM DRAWING: O:\Projects\Longmont\8741117-874\1007\CAD\SheetFiles\PAGE 1 EXHIBIT F.DWG LAYOUT: PAGE 1 USER NAME: HART, GRACE

TYPICAL SHORELINE TREE AND SHRUB PLANT LIST FOR OPEN WATER PONDS

Common Name	Botanical Name	Mature Size (Height/Spread)	Size at Planting	% of Ht./Caliper Standard	% of Total	Total #
Peachleaf Willow	Salix Amygdaloides	30'-40'	1 1/2"	100%	40%	9
		25'-60'				
Cottonless Plains Cottonwood	Populus Sargentii	70'-80'				
		50'-60'	2"	100%	60%	18
Chokecherry	Prunus Virginiana	15'-25'				
		15'-20'				
American Plum	Prunus Americanus	6'-15'	5 gal.	100%	18.50%	45
Common Snowberry	Symphoricarpus albus	3'-4'	5 gal.			
Golden Currant	Ribes aureum	3'-6'	5 gal.			
Wild Rose	Rosa woodsii	3'-6'	5 gal.	100%	22%	27
Coyote Willow	Salix Elaeagnus	6'-12'	5 gal.			
		4'-8'	5 gal.			
Willow Staking				To add thickethabitat at water's edge		180
Redwig Dogwood	Cornus Stolonifera	6'-10'	5 gal.	100%	18.50%	45
		6'-10'				
Western Sandcherry	Prunus Besseyi	4'-5'				
		5'-7'	5 gal.	100%	41%	27

SEED MIX FOR UPLAND AREAS (44.9± ACRES)

Common Name	Scientific Name	Variety	% of Mix	PLS Application Rate (lbs/ac)
Western Wheatgrass	Agropyron smithii	Arriba	17.00%	1.74
Sideoats Grama	Boutelous curtipendia	Butte	17.50%	1.8
Mountain Brome	Bromus marginatus	Bromar	17.00%	1.74
Prairie Sandreed	Calamovilla longifolia	Goshen	1.00%	0.48
Switchgrass	Panicum virgatum	Pathfinder	7.00%	0.67
Alkali Sacaton	Sporobolus airoides		1.00%	0.1
Needle and Thread	Stipa comata		13.00%	1.29
Northern Sweetvetch	Hedysarum boreale	Timp.	10.00%	1.02
Rocky Mountain Penstemon	Penstemon strictus	Bandera	5.00%	0.46
Scarlet Globemallow	Sphaeralcea coccinea	ARS2936	3.00%	0.26
Prairie Wildrose	Rosa Arkansana		8.50%	0.87
Total lbs/ac			100%	10.43

SEED MIX FOR TRANSITIONAL ZONE/WATER'S EDGE (2.9± ACRES)

Common Name	Scientific Name	Variety	% of Mix	PLS Application Rate (lbs/ac)
Western Wheatgrass	Agropyron smithii	Arriba	10.60%	1.45
Side Oats Grama	Boutelous curtipendia	Butte	9.20%	1.24
Canada wildrye	Elymus canadensis	Mandan	18.10%	2.47
Basin wildrye	Elymus cinereus	Magnar	9.80%	1.34
Switchgrass	Panicum virgatum	Pathfinder	5.70%	0.78
Sand dropseed	Sporobolus cryptandrus		0.20%	0.03
Scarlet Globemallow	Sphaeralcea coccinea	ARS2936	3.80%	0.52
American vetch	Vicia americana		42.60%	5.81
Total lbs/ac			100%	13.84

SEED MIX NOTES:

1. PURE LIVE SEED POUNDS PER ACRE. RATES SHOWN ARE FOR DRILL SEEDING; DOUBLE RATES FOR BROADCAST SEEDING.

2. SILT BASIN WETLANDS WILL ESTABLISH WITHOUT SEED/PLANTINGS.

3. ALL RECLAIMED AREAS, WITH THE EXCEPTION OF SILT BASIN WETLANDS WHICH WILL ESTABLISH WITHOUT SEED/PLANTINGS, WILL BE MULCHED WITH 1 TON OF CERTIFIED WEED FREE STRAW PER ACRE. MULCH SHALL BE APPLIED WITHIN 24 HOURS OF SEEDING AND CRIMPED IN PLACE.

CALCULATION FOR SIZE OF TRANSITIONAL ZONE/WATER'S EDGE REQUIRING SEED MIX

SEED MIX FOR TRANSITIONAL ZONE/WATER'S EDGE	PERIMETER LENGTH (FT) (MEASURED AT HWL ELEVATION)	TRANSITIONAL ZONE WIDTH (FT)	ACRES
PHASE 1A	5830	10	1.3
PHASE 4A/C	7170	10	1.6
		TOTAL	2.9

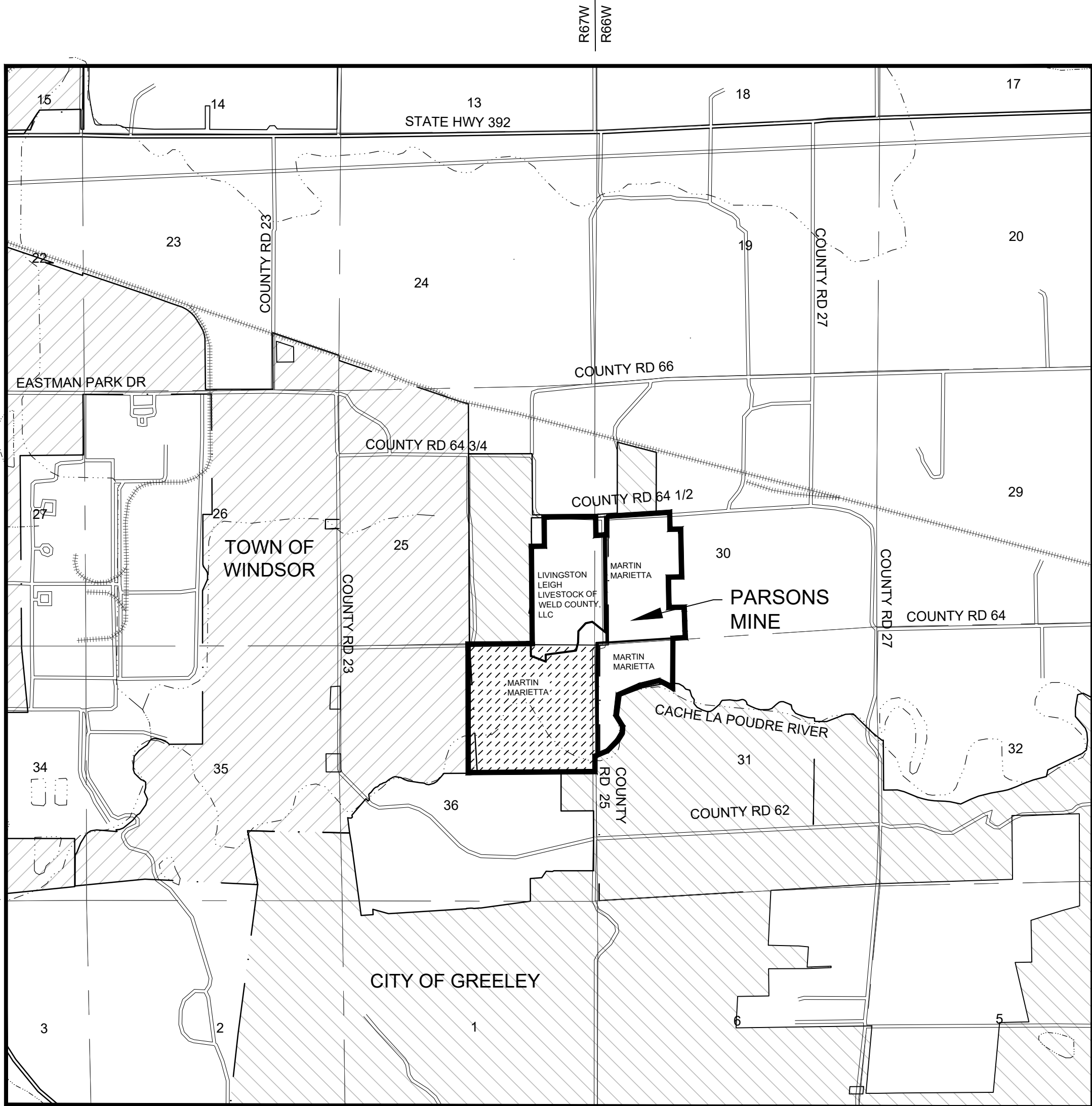
RECLAMATION USES BY CELL

CELL NUMBER	ACRES	TYPE
PHASE 1A	47.3	OPEN WATER OR LINED RESERVOIR
PHASE 1A	4.4	UPLAND
PHASE 1A	2.5	UNDISTURBED R.O.W.
PHASE 1B	19.1	SILT POND WETLAND
PHASE 1C	8.7	SILT POND WETLAND
PHASE 1C	4.0	UPLAND
PHASE 2	33.2	OPEN WATER OR LINED RESERVOIR
PHASE 2	3.7	UPLAND
PHASE 3	6.1	UPLAND
PHASE 4A/C	36.2	OPEN WATER OR LINED RESERVOIR
PHASE 4A/C	19.7	UPLAND
PHASE 4B	8.9	SILT POND WETLAND
PHASE 5A/B	9.5	SILT POND WETLAND
PHASE 5A/B	7.0	UPLAND
PHASE 5C	4.0	UNDISTURBED

RECLAIMED USES	
TYPE OF USE	ACREAGE
UNDISTURBED AREAS (EXISTING WETLANDS, RIVER SETBACK, WCR 25 RIGHT-OF-WAY AND UNMINED AREA SURROUNDED BY WETLANDS SOUTH OF PHASE 2 AND NORTH OF PHASE 4A, AND PHASE 5C)	91.8±
MINING AREA RECLAIMED TO UPLAND	44.9±
MINING AREA RECLAIMED TO SILT POND WETLAND	46.2±
MINING AREA RECLAIMED TO OPEN WATER POND OR LINED RESERVOIR	116.7±
DISTURBED BUT NOT MINED LAND RECLAIMED TO UPLAND	81.4±
TOTAL	381±

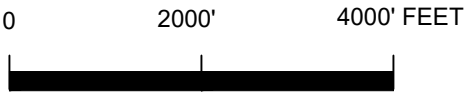
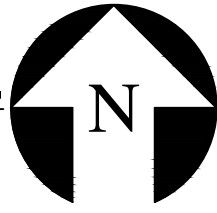
# PARSONS MINE RECLAMATION PLAN MAP

A PARCEL OF LAND LOCATED IN THE NORTHEAST QUARTER OF SECTION 36, THE SOUTHEAST QUARTER OF SECTION 25, TOWNSHIP 6 NORTH, RANGE 67 WEST AND THE NORTHWEST QUARTER OF SECTION 31, THE SOUTHWEST QUARTER OF SECTION 30, TOWNSHIP 6 NORTH, RANGE 66 WEST, ALL IN THE SIXTH PRINCIPAL MERIDIAN, COUNTY OF WELD, STATE OF COLORADO

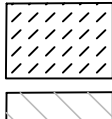


PROJECT VICINITY MAP

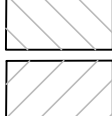
SCALE: 1"=2000'



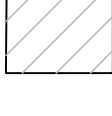
LEGEND:



COLORADO STATE BOARD OF LAND COMMISSIONERS LEASE AREA



GREELEY CITY LIMITS



WINDSOR TOWN LIMITS



CITY LIMITS BOUNDARY



WATER

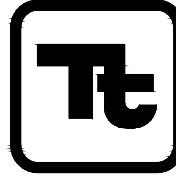
CERTIFICATION:

THIS MAP WAS PREPARED BY TETRA TECH IN COOPERATION WITH MARTIN MARIETTA MATERIALS. MARTIN MARIETTA MATERIALS WILL KEEP THE DIVISION OF RECLAMATION, MINING AND SAFETY INFORMED OF ANY CHANGES TO THE MINING OR RECLAMATION PLANS THROUGH ANNUAL REPORTS AND FILE TECHNICAL REVISIONS OR AMENDMENT APPLICATIONS AS NECESSARY THROUGHOUT THE LIFE OF THE MINE.

JULIE MIKULAS  
REGIONAL LAND MANAGER, WEST DIVISION  
MARTIN MARIETTA MATERIALS

8-22-2025

DATE



TETRA TECH

www.tetratech.com

351 Coffman Street, Suite 200  
Longmont, Colorado 80501  
PHONE: (303) 772-5282 FAX: (303) 772-7039

MARK	DATE	DESCRIPTION	BY
1	10/09	INITIAL SUBMITTAL	MAM
2	1-20-10	ADEQUACY REVIEW RESPONSE	MAM
3	4-15-25	TECHNICAL REVISION	GEH
4	8-22-25	ADEQUACY REVIEW RESPONSE	GEH

LEGAL DESCRIPTION:

A PARCEL OF LAND LOCATED IN THE NORTHEAST QUARTER OF SECTION 36, THE SOUTHEAST QUARTER OF SECTION 25, TOWNSHIP 6 NORTH, RANGE 67 WEST AND THE NORTHWEST QUARTER OF SECTION 31, THE SOUTHWEST QUARTER OF SECTION 30, TOWNSHIP 6 NORTH, RANGE 66 WEST, ALL IN THE SIXTH PRINCIPAL MERIDIAN, COUNTY OF WELD, STATE OF COLORADO AND BEING MORE PARTICULARLY DESCRIBED AS FOLLOWS:

COMMENCING AT THE EAST ONE-QUARTER CORNER OF SAID SECTION 25, WHENCE THE SOUTHEAST ONE-QUARTER CORNER OF SAID SECTION 25 BEARS SOUTH 00°35'52" EAST, A DISTANCE OF 2634.91 FEET, SAID LINE FORMING THE BASIS OF BEARINGS FOR THIS DESCRIPTION; THENCE ALONG SAID LINE SOUTH 00°35'52" EAST A DISTANCE OF 30.00 FEET TO THE TRUE POINT OF BEGINNING;

THENCE NORTH 86°17'47" EAST, A DISTANCE OF 12.24 FEET; THENCE SOUTH 00°35'52" EAST, A DISTANCE OF 388.35 FEET; THENCE NORTH 86°17'47" EAST, A DISTANCE OF 225.17 FEET; THENCE NORTH 00°09'28" WEST, A DISTANCE OF 378.51 FEET; THENCE ALONG A LINE 40.00 FEET SOUTH OF AND PARALLEL WITH THE NORTH LINE OF THE SOUTHWEST QUARTER OF SAID SECTION 30 NORTH 86°17'47" EAST, A DISTANCE OF 1238.11 FEET TO A POINT ON THE EASTERLY BOUNDARY LINE OF LOT B, CORRECTED RECORDED EXEMPTION NO. 0805-30-3 RE2870 RECORDED 4-18-2002 ACCORDING TO THE WELD COUNTY RECORDS; THENCE ALONG SAID EASTERLY BOUNDARY LINE THE FOLLOWING TEN COURSES; 1) THENCE SOUTH 01°09'01" EAST, A DISTANCE OF 350.78 FEET; 2) THENCE NORTH 88°50'59" EAST, A DISTANCE OF 219.78 FEET; 3) THENCE SOUTH 01°09'01" EAST, A DISTANCE OF 274.15 FEET; 4) THENCE SOUTH 88°50'59" WEST, A DISTANCE OF 274.15 FEET; 5) THENCE SOUTH 01°09'01" EAST, A DISTANCE OF 624.44 FEET; 6) THENCE NORTH 88°50'59" EAST, A DISTANCE OF 312.79 FEET; 7) THENCE SOUTH 02°12'44" EAST, A DISTANCE OF 86.34 FEET; 8) THENCE SOUTH 02°20'17" EAST, A DISTANCE OF 191.70 FEET; 9) THENCE SOUTH 01°58'20" EAST, A DISTANCE OF 212.95 FEET; 10) THENCE SOUTH 02°26'29" EAST, A DISTANCE OF 135.01 FEET TO A POINT ON THE NORTH LINE OF THE NORTHWEST QUARTER OF SAID SECTION 31; THENCE ALONG SAID LINE SOUTH 86°25'00" WEST, A DISTANCE OF 256.20 FEET TO THE SOUTHWEST CORNER OF THE WEST HALF OF THE SOUTHEAST QUARTER OF SAID SECTION 30; THENCE ALONG THE EAST LINE OF THE WEST HALF OF THE NORTHWEST QUARTER OF SAID SECTION 31 SOUTH 00°20'58" WEST, A DISTANCE OF 1007.80 FEET TO A POINT ON THE SOUTHERLY LINE OF A PARCEL OF LAND RECORDED AS RECEPTION NO. 2253418, BOOK 1302, JUNE 17, 1991 IN THE WELD COUNTY RECORDS; THENCE ALONG SAID SOUTHERLY BOUNDARY LINE THE FOLLOWING NINE COURSES; 1) THENCE NORTH 63°06'14" WEST, A DISTANCE OF 308.55 FEET; 2) THENCE SOUTH 76°10'08" WEST, A DISTANCE OF 419.98 FEET; 3) THENCE SOUTH 66°20'03" WEST, A DISTANCE OF 477.17 FEET; 4) THENCE SOUTH 06°09'41" WEST, A DISTANCE OF 425.31 FEET; 5) THENCE SOUTH 31°21'08" EAST, A DISTANCE OF 265.50 FEET; 6) THENCE SOUTH 04°18'18" WEST, A DISTANCE OF 125.54 FEET; 7) THENCE SOUTH 30°30'33" WEST, A DISTANCE OF 186.53 FEET; 8) THENCE SOUTH 43°32'41" WEST, A DISTANCE OF 301.48 FEET; 9) THENCE SOUTH 67°20'04" WEST, A DISTANCE OF 280.45 FEET; THENCE ALONG A LINE 30.00 FEET WEST OF AND PARALLEL WITH THE EAST LINE OF THE NORTHEAST QUARTER OF SAID SECTION 36 SOUTH 00°01'18" EAST, A DISTANCE OF 319.20 FEET TO A POINT ON THE SOUTH LINE OF THE NORTHEAST QUARTER OF SAID SECTION 36; THENCE ALONG SAID SOUTH LINE SOUTH 89°33'49" WEST, A DISTANCE OF 2807.48 FEET TO THE CENTER ONE-QUARTER CORNER OF SAID SECTION 36; THENCE ALONG THE WEST LINE OF THE NORTHEAST QUARTER OF SAID SECTION 36 NORTH 00°05'20" WEST, A DISTANCE OF 2642.29 FEET TO THE NORTH ONE-QUARTER CORNER OF SAID SECTION 36; THENCE ALONG THE NORTH LINE OF THE NORTHEAST QUARTER OF SAID SECTION 36 NORTH 89°33'25" EAST, A DISTANCE OF 1320.15 FEET TO THE NORTHWEST CORNER OF THE EAST HALF OF THE NORTHEAST QUARTER OF SAID SECTION 36; THENCE ALONG THE WEST LINE OF THE EAST HALF OF THE SOUTHEAST QUARTER OF SAID SECTION 25 NORTH 00°25'35" WEST, A DISTANCE OF 2004.25 FEET; THENCE NORTH 89°32'02" EAST, A DISTANCE OF 265.00 FEET; THENCE NORTH 00°25'35" WEST, A DISTANCE OF 600.00 FEET TO A POINT ON THE SOUTH RIGHT-OF-WAY LINE OF WELD COUNTY ROAD NO. 64 1/2; THENCE ALONG SAID SOUTH RIGHT-OF-WAY LINE NORTH 89°32'02" EAST, A DISTANCE OF 1048.42 FEET TO THE TRUE POINT OF BEGINNING.

SAID PARCEL CONTAINS 380.621 ACRES MORE OR LESS.

GRAVEL MINING APPLICANT/OPERATOR:

MARTIN MARIETTA MATERIALS, INC.  
ATTN: LAND MANAGER  
1627 COLE BOULEVARD, SUITE 200  
LAKEWOOD, CO 80401  
720-245-6418

SURFACE OWNERS:

MARTIN MARIETTA MATERIALS, INC.  
LIVINGSTON LEIGH LIVESTOCK OF WELD COUNTY, LLC

GROSS SITE AREA WITHIN PERMIT BOUNDARY:

381± ACRES

PROPOSED RECLAMATION AREA:

292± ACRES  
(GROSS SITE AREA MINUS WETLANDS, RIVER SETBACK, WCR 25 RIGHT-OF-WAY AND UNMINED AREA SURROUNDED BY WETLANDS SOUTH OF PHASE 2 AND NORTH OF PHASE 4A, AND PHASE 5C)

NOTES:

- TETRA TECH IS NOT A GUARANTOR OF THE PERFORMANCE OF THE WORK.
- TETRA TECH IS NOT RESPONSIBLE FOR SAFETY, IN, ON, OR ABOUT THE PROJECT SITE, NOR FOR COMPLIANCE BY THE APPROPRIATE PARTY WITH ANY REGULATIONS RELATED THERETO.
- TETRA TECH EXERCISES NO CONTROL OVER THE SAFETY OR ADEQUACY OF ANY EQUIPMENT, BUILDING COMPONENTS, FORMS, OR OTHER WORK AIDS USED IN OR ABOUT THE PROJECT, OR OVER THE SUPERINTENDING OF THE SAME.
- WRITTEN SCALES ON PLAN ARE FOR FULL SIZED 24" x 36" PLANS AND DO NOT APPLY TO REDUCED PLAN SETS.
- CONTOUR ELEVATIONS ARE BASED ON NAVD 88.
- HORIZONTAL DATUM IS MODIFIED STATE PLANE (NORTH) COORDINATES
- ALL FLOODWAY AND FLOODPLAIN INFORMATION IS BASED ON MAP PAGE NO. 6 OF THE FLOOD PLAIN INFORMATION STUDY, CACHE LA POUDBRE RIVER, FOR THE CITY OF GREELEY AND WELD COUNTY, DATED AUGUST 2003 AND AMENDED JUNE 2007.

SHEET INDEX:

- COVER SHEET
- OVERALL RECLAMATION PLAN
- RECLAMATION PLAN MAP (NORTH HALF)
- RECLAMATION PLAN MAP (SOUTH HALF)

MARTIN MARIETTA MATERIALS, INC.

PARSONS MINE  
EXHIBIT F

COVER SHEET

Project No.: 117-8741007

Designed By: MMM

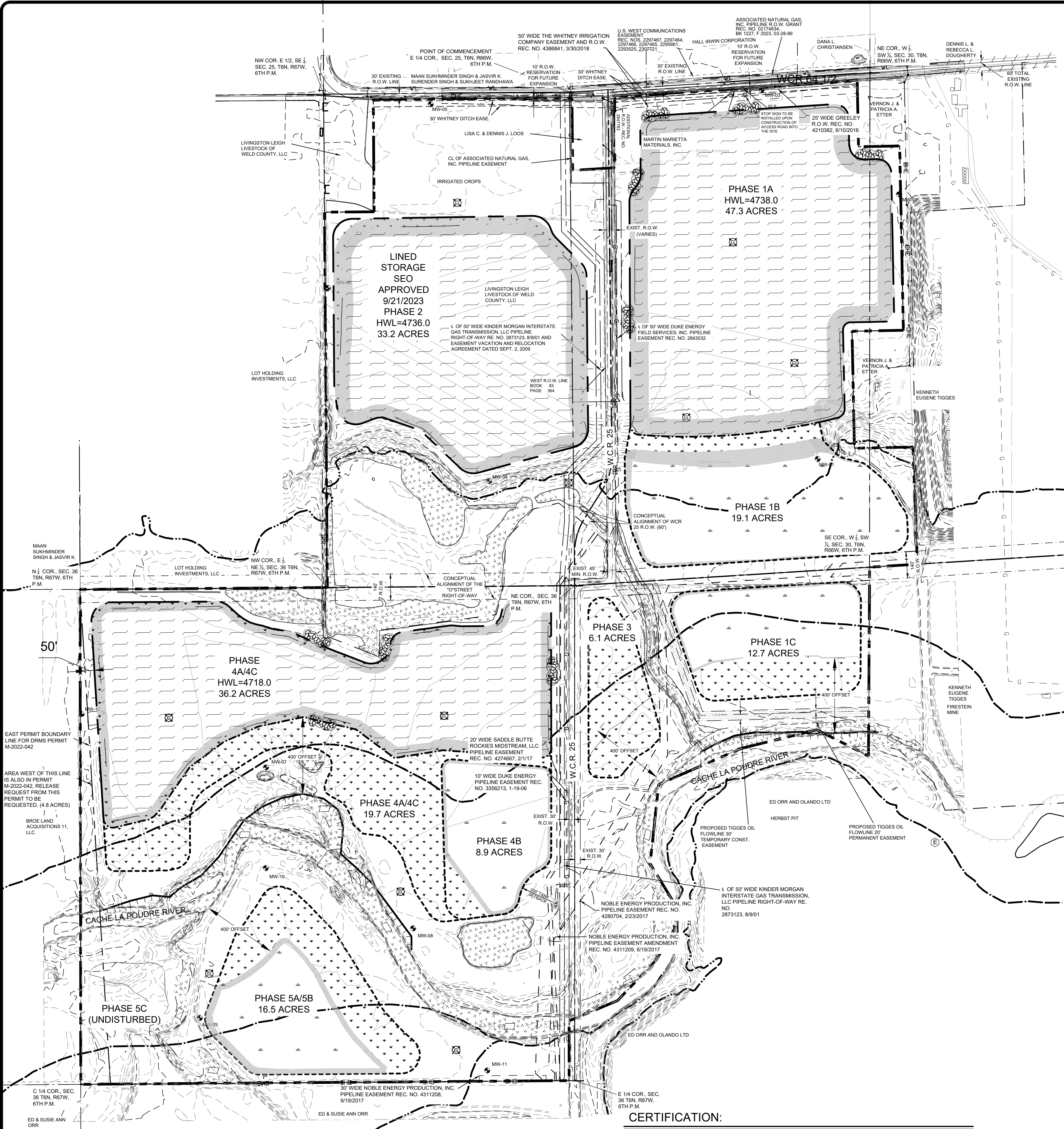
Drawn By: GEH

Checked By: PFH

1



Tuesday, August 19, 2025 7:20:09 AM DRAWING: O:\Projects\Longmont\8741117-4741007\CAD\SheetFiles\PAGE 2 EXHIBIT F.DWG LAYOUT: PAGE 2 USER NAME: HART, GRACE

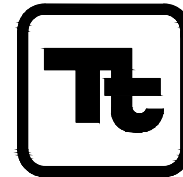


CERTIFICATION:

THIS MAP WAS PREPARED BY TETRA TECH IN COOPERATION WITH MARTIN MARIETTA MATERIALS. MARTIN MARIETTA MATERIALS WILL KEEP THE DIVISION OF RECLAMATION, MINING AND SAFETY INFORMED OF ANY CHANGES TO THE MINING OR RECLAMATION PLANS THROUGH ANNUAL REPORTS AND FILE TECHNICAL REVISIONS OR AMENDMENT APPLICATIONS AS NECESSARY THROUGHOUT THE LIFE OF THE MINE.

JULIE MIKULAS  
REGIONAL LAND MANAGER, WEST DIVISION  
MARTIN MARIETTA MATERIALS

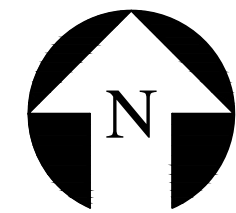
8-22-2025  
DATE



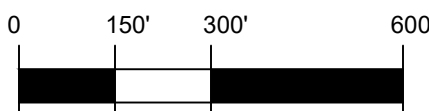
TETRA TECH

www.tetrattech.com

351 Coffman Street, Suite 200  
Longmont, Colorado 80501  
PHONE: (303) 772-5282 FAX: (303) 772-7039



1"=300'

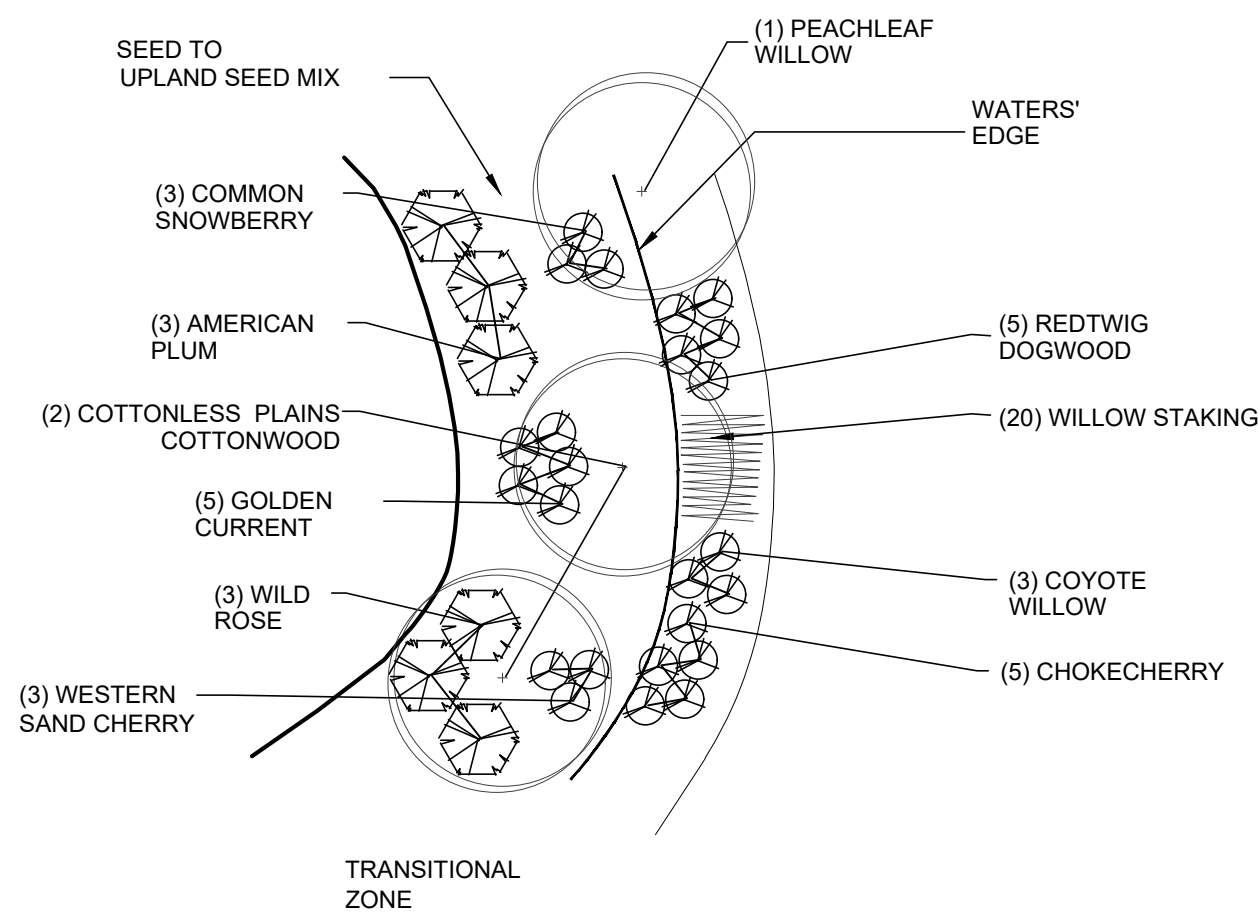
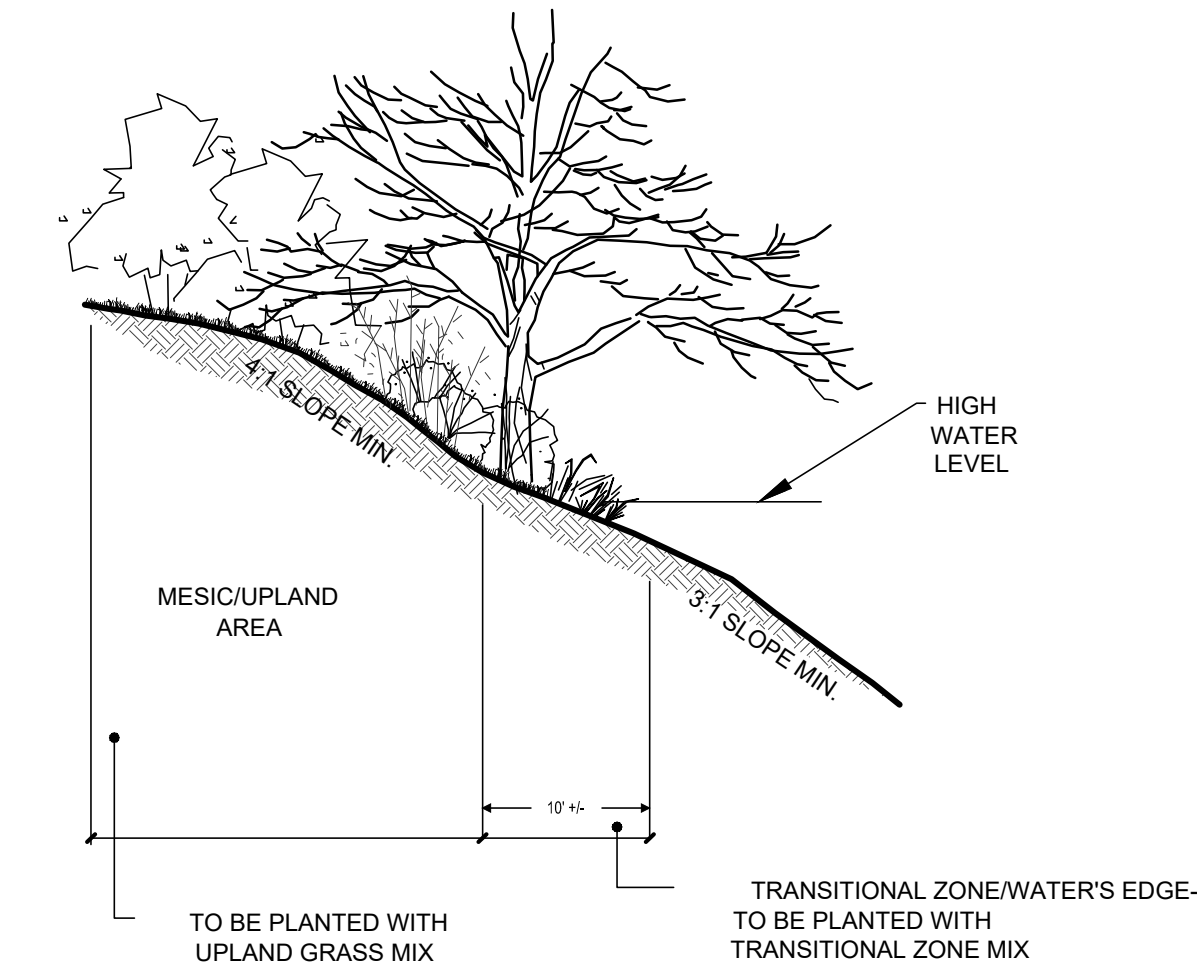
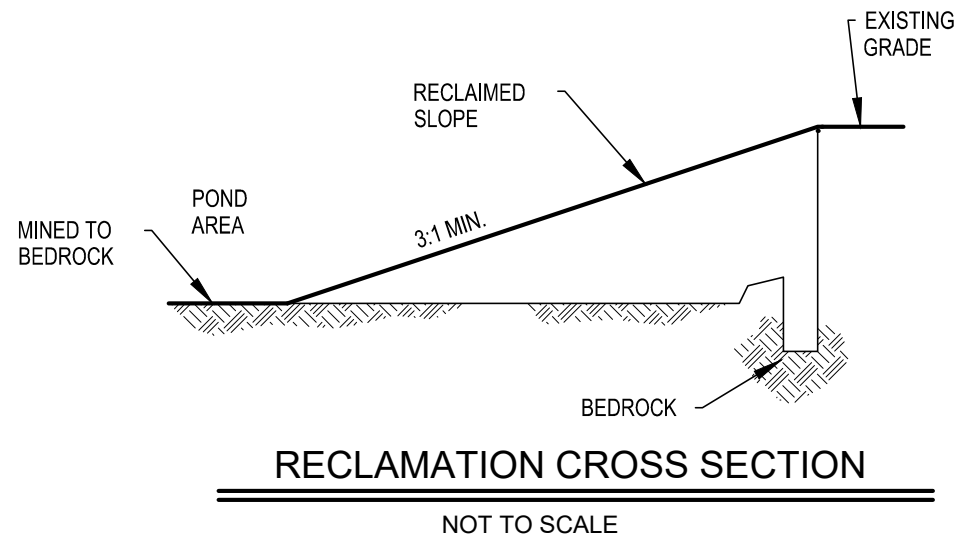


LEGEND

- EXISTING CONTOURS
- PROPOSED CONTOURS
- EXISTING WETLAND
- EXISTING DITCH OR CHANNEL
- EXISTING GAS/OIL FLOWLINES
- EXISTING TELEPHONE
- OVERHEAD ELECTRIC
- EXISTING FENCE
- SECTION LINE
- TANK & OIL/GAS WELL SET BACK
- OIL/GAS DRILLING WINDOWS
- PERMIT BOUNDARY
- EXISTING EASEMENTS
- PROPOSED EASEMENTS
- RIVER EDGE
- RIVER EDGE (UPDATED 2025)
- POSSIBLE CLAY LINER AT MINING CELL LIMIT (VIA A FUTURE PERMIT REVISION)
- POSSIBLE CLAY LINER (VIA A FUTURE PERMIT REVISION)
- MINING LIMITS
- CULVERT
- SWALE
- POWER POLE
- SECTION CORNER
- GAS/OIL WELL
- GAS/OIL TANK
- EAGLE NESTING AREA
- CACHE LA POUDRE RIVER
- RECLAIMED UPLAND
- RECLAIMED SILT POND WETLAND (MAY BE RECLAIMED AS UPLAND IF OVERBURDEN IS AVAILABLE)
- RECLAIMED OPEN WATER OR LINED RESERVOIR
- 2003 ARMY CORPS FLOODWAY (FW)
- 2003 ARMY CORPS 100 YEAR FLOOD PLAIN (FP-1)
- TYPICAL SHORELINE PLANTINGS

NOTES:

- ALL DISTURBED AREAS OUTSIDE OF THE MINING LIMITS SHALL BE RECLAIMED TO UPLAND.
- THE OPERATOR WILL SPREAD A MINIMUM OF 6"-12" OF TOPSOIL DURING RECLAMATION OF DESIGNATED AREAS.
- \* = REVISION FOR LINED STORAGE TO BE SUBMITTED AFTER DESIGN IS DETERMINED AND A CONSULTATION FROM THE DRMS.



MARK	DATE	DESCRIPTION	BY
1	10-09	INITIAL SUBMITTAL	MAM
2	1-20-10	ADEQUACY REVIEW RESPONSE	MAM
3	4-15-25	TECHNICAL REVISION	GEH
4	8-22-25	ADEQUACY REVIEW RESPONSE	GEH

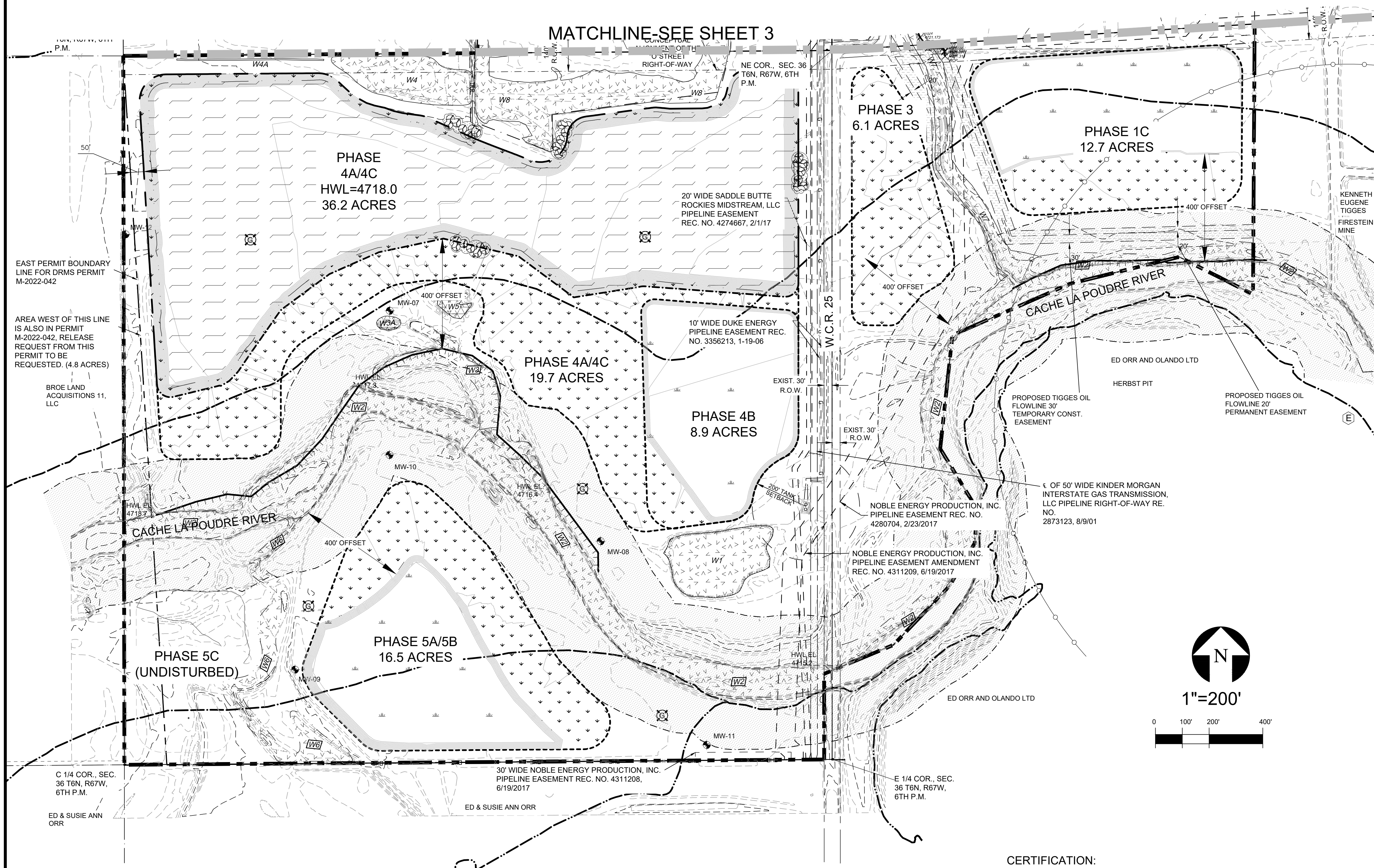
MARTIN MARIETTA MATERIALS, INC.  
PARSONS MINE  
EXHIBIT F  
OVERALL RECLAMATION PLAN

Project No.: 117-8741007  
Designed By: MMM  
Drawn By: GEH  
Checked By: PFH









NOTES:

1. ALL DISTURBED AREAS OUTSIDE OF THE MINING LIMITS SHALL BE RECLAIMED TO UPLAND.
2. THE OPERATOR WILL SPREAD A MINIMUM OF 6"-12" OF TOPSOIL DURING RECLAMATION OF DESIGNATED AREAS.
3. \* = REVISION FOR LINED STORAGE TO BE SUBMITTED AFTER DESIGN IS DETERMINED AND A CONSULTATION FROM THE DRMS.

EAGLE NEST NOTE:

SEVERAL PROTECTION AND ENHANCEMENT MEASURES WILL BE INCORPORATED INTO THE OPERATION AND RECLAMATION PLANS TO PROTECT THE CURRENT ACTIVE BALD EAGLE NEST:

\* NO MINING ACTIVITY WILL BE CONDUCTED WITHIN ½ MILE OF THE NEST FROM NOVEMBER 15 THROUGH JULY 31.

NO MINING ACTIVITY WILL BE CONDUCTED WITHIN ¼ MILE OF THE NEST THROUGHOUT THE YEAR WITH THE EXCEPTION OF DEVELOPMENT OF AN 12.7± ACRE WETLAND SILT POND CREATED JUST NORTH OF THE RIVER. THE WORK TO CREATE THIS POND WILL BE CONDUCTED OVER A 2 YEAR PERIOD AND WILL BE LIMITED TO AUGUST 15 TO OCTOBER 15 TO PROTECT THE OCCUPIED NEST SITE. A WETLAND BASIN WILL BE CREATED THROUGH MANAGEMENT OF WATER AND PLANTING OF NATIVE WETLAND PLANT SPECIES. THE PURPOSE OF THIS SILT BASIN IS NOT ONLY TO DISPOSE OF SMALLER MATERIALS BUT ALSO TO DEVELOP A WETLAND ADJACENT TO THE RIVER THAT WILL ATTRACT WATERFOWL AND OTHER WILDLIFE SPECIES USED AS A FOOD SOURCE FOR THE EGGS.

\* THE RIVER CORRIDOR WILL BE PROTECTED FROM ALL MINING ACTIVITY BY A 200 FOOT BUFFER.

\* EXISTING WETLANDS IDENTIFIED IN 2007 WILL NOT BE IMPACTED BY MINING OPERATIONS UNDER THE CURRENT RECLAMATION PLAN. ANY FUTURE CHANGES TO THE RECLAMATION PLAN THAT REQUIRE AN UNAVOIDABLE IMPACT TO JURISDICTIONAL WETLANDS (SUCH AS A ROAD CROSSING) WOULD REQUIRE COORDINATION WITH THE US ARMY CORP OF ENGINEERS AND MAY INVOLVE OBTAINING THE NECESSARY PERMITS UNDER THE CLEAN WATER ACT.

\* COORDINATION WILL BE CONDUCTED ANNUALLY WITH THE COLORADO DIVISION OF WILDLIFE TO MONITOR THE EAGLE NESTING LOCATION AND ACTIVITY. PROTECTION MEASURES WILL BE REVIEWED AND COORDINATED WITH THE COLORADO DIVISION OF WILDLIFE SHOULD THE EAGLES RELOCATE THEIR NEST.

\* COORDINATION WILL BE CONDUCTED ANNUALLY WITH THE COLORADO DIVISION OF WILDLIFE TO MONITOR THE LOCATIONS AND ACTIVITY OF EXISTING AND NEW RAPTOR NESTS.


CERTIFICATION:

THIS MAP WAS PREPARED BY TETRA TECH IN COOPERATION WITH MARTIN MARIETTA MATERIALS. MARTIN MARIETTA MATERIALS WILL KEEP THE DIVISION OF RECLAMATION, MINING AND SAFETY INFORMED OF ANY CHANGES TO THE MINING OR RECLAMATION PLANS THROUGH ANNUAL REPORTS AND FILE TECHNICAL REVISIONS OR AMENDMENT APPLICATIONS AS NECESSARY THROUGHOUT THE LIFE OF THE MINE.

*Julie Mikulas*  
JULIE MIKULAS  
REGIONAL LAND MANAGER, WEST DIVISION  
MARTIN MARIETTA MATERIALS

8-22-2025

DATE \_\_\_\_\_

 <b>TETRA TECH</b>  www.tetrattech.com  351 Coffman Street, Suite 200 Longmont, Colorado 80501 PHONE: (303) 772-5282 FAX: (303) 772-7039	MARK	DATE	DESCRIPTION	BY	MARTIN MARIETTA MATERIALS  PARSONS MINE EXHIBIT F  <b>RECLAMATION PLAN MAP          (SOUTH HALF)</b>	Project No.: 117-87141007
	1	10-09	INITIAL SUBMITTAL	MAM		Designed By: MMM
	2	1-20-10	ADEQUACY REVIEW RESPONSE	MAM		Drawn By: GEH
	3	4-15-25	TECHNICAL REVISION	GEH		Checked By: PFH
	4	8-22-25	ADEQUACY REVIEW RESPONSE	GEH		