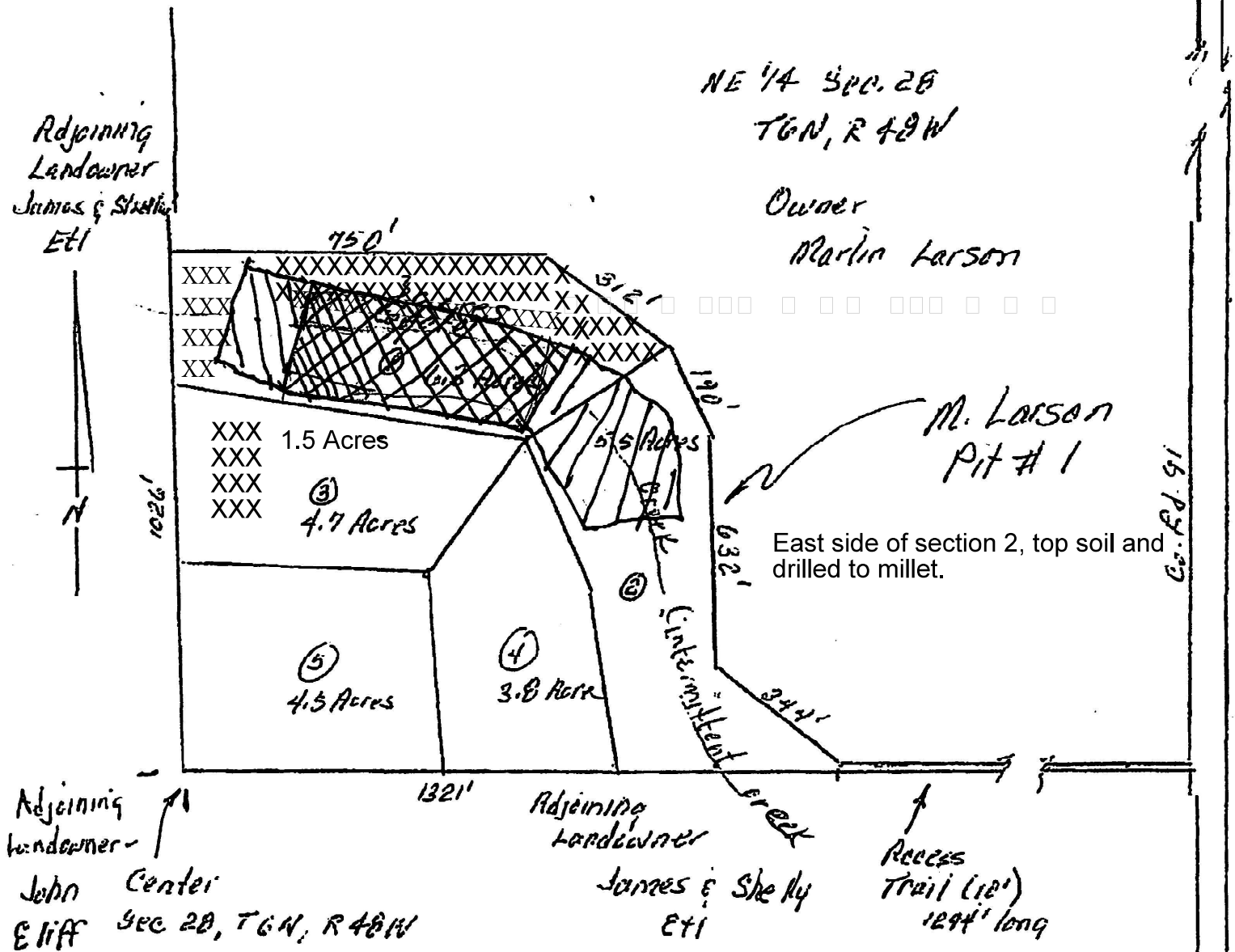


Co. Rd. 6

through July 2022 - Mined all of section 1 and continued into section 2 mined 1.3

2025 The surface area remains the same while we are scrapping the bottom of the pit.



#### EXHIBIT E - SITE MAP

OPERATOR - Ritchey's Redi-Mix Concrete, Inc..  
SCALE 1" = 300'  
DATE January 19, 2018  
SECTION 28, NE 1/4  
TOWNSHIP 6N  
RANGE 48W  
COUNTY Logan County  
PREPARED BY *Randy Schaefer*  
M. Larson Pit #1

Legend  
 2022

XXXX 2024