

STATE OF
COLORADO

Ridley - DNR, Hunter <hunter.ridley@state.co.us>

FW: Coyote Basin Notice Acknowledgment

Nancy Normore <nnormore@homeland-uranium.com>
To: "Ridley - DNR, Hunter" <hunter.ridley@state.co.us>

Thu, Aug 21, 2025 at 4:42 PM

Hunter,

I am in agreement with the amount determined for the financial warranty by the DRMS (USD \$36,641.00). The financial guarantee accepted by BLM equates to USD \$61,658.00 (Right of entry doc: *2025-08-20_BLM_Coyote Basin Project NOI_352200419_Approval*), which is the amount required for payment. I will contact Sara Stevenson-Benn to complete the forms and set up payment with our accounting.

Recent changes were made to the program to satisfy BLM's concerns for areas with planned drill activity that have been recently deemed culturally sensitive. One trench has been removed from the program, and one drillhole has been removed. See Figures in the file attached *2025-08-18_HLU_Coyote Basin Project NOI_352200419-V1C04*: Figures 2, 3, 4, 7, 11, and 12. Also, one drillhole was moved approximately 30 m (100 ft) in a northerly direction to be located outside the culturally sensitive areas (Figures 7 and 12). All relevant files have been updated in the dropbox assigned to CODRMS (included below). Approval was received from BLM after these amendments were made to the NOI.

<https://www.dropbox.com/scl/fo/lsvegdn6f6w6sgl7gio1/AATAbuM0vQGjQNN04x3Nj3M?rlkey=mc2oyypkefpgcbav9x9spnukj&dl=0>

Due to submitted changes, I would like to request an extension of the NOI decision due date for the Coyote Basin Project deadline by 30 days from today.

Thank you for the direction you have provided. I appreciate your guidance through this process. Please let me know if there is anything else you require which I may have missed.

[Quoted text hidden]

3 attachments

 **2025-08-20_BLM_Coyote Basin Project NOI_352200419_Approval.pdf**
292K

 **Adequacy Review #3_P2025011.pdf**
1497K

 **2025-08-18_HLU_Coyote Basin Project NOI_352200419-V1C04.pdf**
19943K



United States Department of the Interior

BUREAU OF LAND MANAGEMENT
White River Field Office
220 East Market Street
Meeker, Colorado 81641



In Reply Refer To:
COCO106741281
3809 (CON050)

AUG 20 2025

FED EX TRACKING: 883656971954
SIGNATURE REQUESTED

BLM Case File Number
COCO106741281

Project
Coyote Basin Project

Operator
Shift Exploration Inc.
Attn: Nancy Normore
503-905 West Pender Street
Vancouver, BC V6C 1L6

Location
T3N, R97W, Sec. 9, 15, 17, 22, 27
6th Principal Meridian

NOTICE ACKNOWLEDGED DETERMINATION OF REQUIRED FINANCIAL GUARANTEE AMOUNT

Ms. Normore:

The Shift Exploration Inc. Notice to conduct exploration activities in Rio Blanco and Moffat County, CO was received in this office on July 07, 2025. The Notice has been assigned Bureau of Land Management (BLM) case file number COCO106741281. Please refer to this number in future correspondence concerning this operation. A final Notice was submitted by the operator on August 18, 2025, incorporating changes to proposed operations based on information requests and conversations with BLM. Proposed activities include exploration drilling and trenching with associated pads and laydown areas, access will be through a combination of existing roads and overland travel. Exploration activities are proposed to disturb a total of 4.78 acres. No occupancy has been requested under 43 CFR 3715.

The BLM has reviewed your Notice and determined it is complete, containing all the information required by the surface management regulations at 43 CFR 3809.301. The BLM has reviewed the proposed operation and determined it is adequate to prevent unnecessary or undue degradation as defined by 43 CFR 3809.5.

Please be advised that any improvement (blading, widening, etc.) to existing two-track roads will constitute the construction of that road, and complete reclamation will be required.

Amount of Financial Guarantee – This office has reviewed Shift Exploration Inc.’s reclamation cost estimate and determined that the amount of **\$61,658** is sufficient to meet all anticipated reclamation requirements. The amount of the reclamation cost estimate is based on the operator complying with all applicable operating and reclamation requirements as outlined in the Notice and the regulations at 43 CFR 3809.420.

Line items in the approved reclamation cost estimate are not to be considered as the limits of the reclamation expenditures should forfeiture of the financial guarantee be necessary. The line items listed are solely for the purpose of arriving at a total amount of the financial guarantee. This amount may be spent as the BLM deems necessary to implement the approved reclamation plan. The financial guarantee amount does not represent reclamation liability limits or constraints should the actual cost of reclamation exceed this amount.

Required Financial Guarantee – The financial guarantee in the amount of **\$61,658** must be submitted and accepted by the Colorado Division of Reclamation, Mining, & Safety (CODRMS) at Room 215, 1001 E 62nd Avenue Denver, CO 80216. You must receive written notification from that office accepting and obligating your financial guarantee and you must then notify BLM that your financial guarantee has been accepted before you begin any surface disturbing operations.

The type of instruments that are acceptable to the BLM for financial guarantees are found at 43 CFR 3809.555. Please contact CODRMS at (303) 866-3567 for forms and further information regarding acceptable financial guarantee.

The BLM’s review of your proposed operations, determination that your Notice is complete, finding that the activity will not cause unnecessary or undue degradation and decision concerning the amount of the financial guarantee does not relieve you, the operator of the responsibility to comply with all applicable Federal, state, and local laws, regulations, and permit requirements. You are responsible for preventing any unnecessary or undue degradation and for reclaiming all lands disturbed by your operations.

This decision does not constitute certification of ownership to any entity named in the Notice, recognition of the validity of any associated mining claims, or recognition of the economic feasibility of the proposed operations.

Term of Notice - Your Notice will remain in effect for 2 years from the date of this decision, unless you notify this office beforehand that operations have ceased, and reclamation is complete. If you wish to conduct operations for another 2 years after the expiration date of your Notice, you must notify this office in writing on or before the expiration date as required by 43 CFR 3809.333. You will also have to submit an updated reclamation cost estimate at that time.

This acknowledgment does not relieve the operator of the following:

1. Prevention of unnecessary or undue degradation of public lands and resources. As part of that, the following site management practices shall be used when on public lands.
 - a. No hazardous or toxic waste, waste oil or lubricants shall be disposed of on public lands. Trash and other debris should be contained on the work site and then hauled to an approved landfill.
 - b. Burial and/or burning of trash and other debris are not authorized without specific permits from BLM and other appropriate agencies.
 - c. Operator shall be responsible for having a spill prevention and cleanup plan. Operator shall also provide adequate on-site spill control and cleanup materials and instruct on-site personnel in spill prevention and cleanup methods.
 - d. Any oil, noxious fluids, fuels, or chemicals spilled onto the ground or water shall be cleaned up immediately. After clean up, the oil, noxious fluids, fuels, or chemicals and any contaminated material shall be removed from the site and disposed of at an approved disposal facility.
2. Reclamation of lands disturbed by the proposed operations.
3. Compliance with all applicable federal, state, and local laws and regulations; obtaining all appropriate federal, state, and local authorizations and permits.
4. Under 43 CFR 3715.0-5, occupancy on public lands longer than 14 days in any 90-day period within a 25-mile radius of the initially occupied site, construction, or maintenance of temporary or permanent structures, or constructing fences or barriers to access; for purposes of conducting activities under the Mining Law does not qualify as casual use. Occupancies must be authorized by the District/Field Manager under the Use and Occupancy Regulations at 43 CFR 3715.
5. When cultural or paleontological resources, including but not limited to historic ruins, historic mine workings, historic trash dumps, prehistoric artifacts, and fossils, are discovered during the proposed operations the resources shall be left intact and immediately brought to the attention of the BLM authorized officer.
6. Pursuant to 43 CFR 10.4(g) the holder of this authorization must notify the authorized officer, by telephone, with written confirmation, immediately upon the discovery of human remains, funerary items, sacred objects, or objects of cultural patrimony. Further, pursuant to 43 CFR 10.4(c) and (d), you must stop activities in the immediate vicinity of the discovery and protect it from your activities for 30 days or until notified to proceed by the authorized officer.

7. The Migratory Bird Treaty Act prohibits the destruction of nests (nests with eggs or young) of migratory birds. In order to avoid potential impacts to breeding migratory birds, a careful visual inspection of habitat in the project area should be made prior to any surface disturbance (including cross-country routes) during the avian breeding season (May 15th through July 15th). Nesting activities may include eggs or young present in nest, adult behavioral displays (e.g. dive-bombing, faking injury, won't leave the area, agitated calling, etc.). If active nests are located, they should be avoided by an appropriate distance to prevent destruction of the nest and disturbance of the nesting birds, and a BLM biologist should be notified immediately.
8. Activities are proposed in winter habitat for big game species. If activities are to take place during winter months care should be taken to avoid disturbing and displacing these animals.
9. Activities are proposed in important habitat for greater sage-grouse. If possible, surface disturbing activities should be avoided between March 1st to July 15th.
10. Activities are proposed in important habitat for white-tailed prairie dog. If possible, surface disturbing activities should be avoided between March 1st – May 1st.
11. The operator shall be responsible for controlling all noxious weeds and other undesirable invading plant species in the reclaimed area until revegetation activities have been determined to be successful by the BLM authorized officer. The operator is responsible for contacting the BLM for concurrence with any proposed weed control program prior to application of any chemical treatments for weeds on public lands.
12. All drill holes shall be abandoned according to State of Colorado regulations. All sample bags and supplies should be removed from the drill site and public land within 14 days of completing a drill hole.
13. The following best site management precautionary measures should be taken to prevent wildland fires. In the event your operations should start a fire, you could be held liable for all suppression costs under Title 43 CFR 9212.4. These are in addition to any requirements imposed by the Mine Safety and Health Administration or other governing agencies for work-area fire protection.
 - a. All vehicles should carry at a minimum a shovel and five gallons of water (preferably in a backpack pump), in addition to a conventional fire extinguisher.
 - b. Adequate firefighting equipment (a shovel, a pulaski, standard fire extinguisher(s), and an ample water supply) should be kept readily available at each active drill site.
 - c. Vehicle catalytic converters should be inspected often and cleaned of all flammable debris.

- d. All cutting/welding torch use, electric-arc welding, and grinding operations should be conducted in an area free, or mostly free, from vegetation. An ample water supply and shovel should be on hand to extinguish any fires created from sparks. At least one person in addition to the cutter/welder/grinder should be at the work site to promptly detect fires created by sparks.
- e. Any fire restrictions or closures issued by the Northwest District Office will be publicized in the local media, and notice will be posted at various sites throughout the district. **We will not individually contact operators.** Your notice serves as an authorization that may exempt your operations from certain restrictions in those orders. Your personnel will be responsible for being aware of and complying with the requirements of those orders.
- f. Any wildland fire observed should be reported immediately to the Craig Interagency Dispatch Center at (970) 295-6800.

Appeal of a Decision under 43 CFR Subpart 3809

If you are adversely affected by this decision, you may request State Director review of this decision. If you request State Director review, the request must be received in the BLM Colorado State Office at:

**Bureau of Land Management
Colorado State Office
State Director
PO Box 151029
Lakewood, Colorado, 80215**

no later than 30 calendar days after you receive or are notified of this decision. The request for State Director review must be filed in accordance with the provisions in 43 CFR 3809.805. This decision will remain in effect while the State Director review is pending unless you request and obtain a stay from the State Director. If you request a stay with the State Director, you have the burden of proof to demonstrate that a stay should be granted using the standards and procedures for obtaining a stay from the Interior Board of Land Appeals (IBLA).

If the State Director does not make a decision on your request for review of this decision within 21 days of receipt of the request, you should consider the request declined and you may appeal this decision to the IBLA. You may contact the BLM Colorado State Office to determine when the BLM received the request for State Director Review. You have 30 days from the end of the 21-day period in which to file your Notice of Appeal with the Interior Board of Land Appeals (IBLA) in accordance with the regulations at 43 CFR Part 4. Under 43 CFR 3809.801(a)(1).

If you wish to bypass a State Director Review, this decision may be appealed directly to the IBLA in accordance with the regulations contained in 43 CFR Part 4. The notice of appeal must be filed no later than 30 days after the date of receiving notice of this decision. Any notice of

appeal must be filed with the IBLA and must include a copy of the decision being appealed, a statement of standing, and a statement of timeliness.

If you wish to file a petition for a stay of the effectiveness of this decision during the time that your appeal is being reviewed by the Board, the petition for a stay must show sufficient justification based on the following criteria at 43 CFR 4.405(b). You must serve a copy of the notice of appeal and any accompanying documents on the office of the officer who made the decision, each person or entity named in the decision, and the appropriate Office of the Solicitor at the time of filing with IBLA (see 43 CFR 4.403(b); 4.407(b)). Parties must serve the Office of the Solicitor at the address shown on Form 1842-1. Service on a party known to be represented by an attorney or other designated representative must be made on the representative. If a statement of reasons for the appeal is not included with the notice of appeal, it must be filed within 30 days after the record on appeal is filed with the IBLA. Failure to file a statement of reasons within the time required will subject the challenged decision to summary affirmance (see 43 CFR 4.412(a)).

Standards for Obtaining a Stay

Except as otherwise provided by law or other pertinent regulation, a petition for a stay of a decision pending appeal shall show sufficient justification based on the following standards:

1. The relative harm to the parties if the stay is granted or denied,
2. The likelihood of the appellant's success on the merits,
3. The likelihood of immediate and irreparable harm if the stay is not granted, and
4. Whether the public interest favors granting the stay.

If you have any questions, please contact Tom Cummings at (970) 878-3819, by email at tcummings@blm.gov, or at the above address.



Digitally signed by WILLIAM
MILLS
Date: 2025.08.19 15:16:53 -06'00'

William Mills
Field Manager
White River Field Office

ecc: Nancy Normore
Shift Exploration Inc.
Vancouver, BC

Daniel Warren
Hunton Andrews Kurth LLP
San Francisco, CA

UNITED STATES
DEPARTMENT OF THE INTERIOR
BUREAU OF LAND MANAGEMENT

AUG 20 2025

INFORMATION ON APPEALING TO THE INTERIOR BOARD OF LAND APPEALS

IF YOU APPEAL, THE FOLLOWING PROCEDURES MUST BE FOLLOWED. FAILURE TO FOLLOW THEM MAY SUBJECT THE APPEAL TO DISMISSAL OR SUMMARY AFFIRMANCE (see 43 CFR 4.412(a)).

1. WHAT TO FILE	<p><i>Notice of Appeal:</i> You must file a notice of appeal if you wish to appeal a decision.</p> <p><i>Decision Being Appealed:</i> You must include a copy of the decision from which you are appealing.</p> <p><i>Statement of Standing:</i> You must show that you are a party to the case who is adversely affected by the decision.</p> <p><i>Statement of Timeliness:</i> You must include a statement and any corroborating documentation that provides the date when you received notice of the decision.</p> <p><i>Petition for a Stay:</i> Except where program-specific regulations place this decision in full force and effect or provide for an automatic stay, the decision becomes effective upon the expiration of the time allowed for filing an appeal unless a petition for a stay is timely filed together with the Notice of Appeal. You must show that you meet the criteria for a stay. (43 CFR 4.405(b))</p> <p>IMPORTANT: After July 21, 2025, appellants who are represented by an attorney must use IBLA's electronic filing system, Bison File and Serve. Appellants who are not represented by an attorney may file an appeal by Bison File and Serve, hand delivery, mail, or commercial carrier. To file your appeal you must include the Notice of Appeal, Statement of Standing, Statement of Timeliness, and a Petition for a stay, if applicable. Each document must be separately filed.</p>
2. WHEN TO FILE	<p>You must file a Notice of Appeal no later than 30 days after the date of receiving notice of the decision.</p> <p>IMPORTANT: This appeal timeframe cannot be extended.</p>
3. WHERE TO FILE	<p>The documents listed in section 1 above must be filed with Interior Board of Land Appeals (the Board). (43 CFR 4.403(b)(1))</p> <p><i>Electronic Filing:</i> Attorneys representing a person or entity and any Federal, State, or local agency, must file electronically; non-attorneys may file electronically and are strongly encouraged to do so. A link to the electronic filing system known as Bison File and Serve is located on the Board's website. Refer to the OHA Standing Orders on Electronic Transmission found</p>

	<p>at the Department of the interior OHA website at https://www.doi.gov/oha for more information about electronic filing.</p> <p><i>Non-Electronic Filing:</i> Any document filed by mail must be delivered to the Board at the address specified in the <i>Standing Order on Addresses and Contact Information</i>.</p> <p>IMPORTANT: Filing documents by email is not permitted.</p>
4. WHERE TO SEND COPIES (SERVICE)	<p>You must provide copies, also known as service, of your Notice of Appeal and accompanying documents to certain entities at the same time you file them with the Board. You must provide copies of all documents listed in paragraph 1 to the following entities (43 CFR 4.407(b)):</p> <p>BLM Office that issued the decision: William Mills - Field Manager Bureau of Land Management White River Field Office 220 East Market Street Meeker, CO 81641</p> <p>Proper Office of the Solicitor: U.S. Department of the Interior Regional Solicitor, Rocky Mountain Region 755 Parfet Street, Suite 151 Lakewood, CO 80215</p> <p>Name(s), contact information of any person/entity named in the decision: Shift Exploration Inc. Attn: Nancy Normore 503-905 West Pender Street Vancouver, BC V6C 1L6</p> <p>IMPORTANT: You may serve copies of your Notice of Appeal and accompanying documents electronically or non-electronically. For electronic service, refer to the OHA Standing Orders on Electronic Transmission. For non-electronic service, documents should be sent to the required parties by United States mail or commercial courier for delivery within 3 days. Nonelectronic filers must consult the <i>Standing Order on Addresses and Contact Information</i>, located on the Board's website, for information about where to serve your copies.</p>
5. STATEMENT OF REASONS	<p>You must file a statement of reasons that sets forth, with specificity, all legal or factual errors you allege BLM made in the decision being appealed. If not already included in the Notice of Appeal, you must file a statement of reasons no later than 30 days after BLM files the record on appeal with the Board, unless an extension is sought and received.</p>
6. PROCEDURAL REGULATIONS AND STANDING ORDERS	<p>The procedural regulations governing your appeal are located at 43 C.F.R. Part 4, subpart E and are available on the Board's website. The standing orders governing your appeal are available on the Board's website. See also, the Board's Standing Order on Electronic Transmission at https://www.doi.gov/oha/oha-standing-orders</p>

7. THE BOARD'S WEBSITE

The Board's website is located at <https://www.doi.gov/oha/about-interior-board-land-appeals>.

43 CFR SUBPART 1821-GENERAL INFORMATION

Sec. 1821.10 Where are BLM offices located? (a) In addition to the Headquarters Office in Washington, D.C. and seven national level support and service centers, BLM operates 12 State Offices each having several subsidiary offices called Field Offices. The addresses of the State Offices can be found in the most recent edition of 43 CFR 1821.10. The State Office geographical areas of jurisdiction are as follows. BLM is allowing electronic service to each of the following states at the included email address:

STATE OFFICES AND AREAS OF JURISDICTION:

Alaska State Office ----- Alaska; BLM_AK_APPEALS@BLM.GOV
Arizona State Office ----- Arizona; BLM_AZ-APPEALS_OHA@BLM.GOV
California State Office ----- California; BLM_CA_Web_SO@BLM.GOV
Colorado State Office ----- Colorado; BLM_CO_APPEALS@BLM.GOV
Eastern States Office ----- Arkansas, Iowa, Louisiana, Minnesota, Missouri, and all States east of the Mississippi River; BLM_ES_APPEALS@BLM.GOV
Idaho State Office ----- Idaho; BLM_ID_LITSPEC@BLM.GOV
Montana State Office ----- Montana, North Dakota, and South Dakota;
BLM_MT_OHA@BLM.GOV
Nevada State Office----- Nevada; BLM_NV_APPEALS@BLM.GOV
New Mexico State Office ----- New Mexico, Kansas, Oklahoma, and Texas;
BLM_NM_LITIGATION@BLM.GOV
Oregon State Office ----- Oregon and Washington; BLM_OR_APPEALS@BLM.GOV
Utah State Office ----- Utah; BLM_UT_APPEALS@BLM.GOV
Wyoming State Office ----- Wyoming and Nebraska; BLM_WY_WY910_LITIGATION@BLM.GOV

(b) A list of the names, addresses, and geographical areas of jurisdiction of all Field Offices of the Bureau of Land Management can be obtained at the above addresses or any office of the Bureau of Land Management

Coyote Basin Exploration Project

43 CFR 3809 Exploration Notice COCO106741281

Moffat County, Colorado Rio Blanco County, Colorado

**This notice has been prepared pursuant to 43 CFR 3809.21.*

Section 1: Operator/Claimant Information

Pursuant to 43 CFR 3809.301(b)(1).

1. Operator Information

Name: Shift Exploration Inc.
Address: 503-905 West Pender Street
Vancouver, BC V6C 1L6
Contact: Nancy Normore
Tel: (306) 270-6751
E-mail: nnormore@homeland-uranium.com
Employee Identification Number (EIN): 32-2744367

2. Claimant Information:

Name: Shift Exploration Inc.
Address: 503-905 West Pender Street
Vancouver, BC V6C 1L6
Contact: Nancy Normore
Employee Identification Number (EIN): 35-2744367

3. Claims Details and Location:

County: Moffat County and Rio Blanco County
Parcels: 039301100901 (Moffat County); 113536100002 (Rio Blanco County)
Meridian: Sixth Principal Meridian
Lat/Long: 40°15'05.0"N 108°17'01.1"W (approximate center point of mining claims)

Directions: The exploration project site is accessed from Colorado State Highway 40 and BLM Route 1509 from the north and Colorado State Highway 64 and County Road 77 from the south using existing off-road vehicle routes and overland travel. See **Figures 1, 14, and 15**.

Claims and acreage: The exploration project site is located within portions of 33 unpatented mining claims, which are part of a claim block encompassing 681± acres. See details in Table 1 below and **Figures 3, 4, and 5**. See **Figure 9** for location relative to Township, Range, and Section.

Coyote Basin Exploration Project

Table 1. Mine Claims

BLM Serial Number	Claim Name	Claim Type	Township	Range	Section
CO106388057	CB 168	LODE	T3N	R97W	21-(NE)
CO106388059	CB 170	LODE	T3N	R97W	21-(NE)
CO106388059	CB 170	LODE	T3N	R97W	22-(NW)
CO106388061	CB 172	LODE	T3N	R79W	22-(NW, NW)
CO106388063	CB 174	LODE	T3N	R79W	22-(NW, NW)
CO106388076	CB 187	LODE	T3N	R97W	15-(SW)
CO106388076	CB187	LODE	T3N	R97W	22-(NW)
CO106388077	CB 188	LODE	T3N	R97W	15-(NW, SW)
CO106388078	CB 189	LODE	T3N	R97W	15-(SW)
CO106388078	CB 189	LODE	T3N	R97W	22-(NW)
CO106388079	CB 190	LODE	T3N	R79W	15-(NW, SW)
CO106388080	CB 191	LODE	T3N	R97W	15-(SW)
CO106388080	CB 191	LODE	T3N	R97W	22-(NW)
CO106388082	CB 193	LODE	T3N	R97W	15-(SW)
CO106388082	CB 193	LODE	T3N	R97W	22-(NW)
CO106388084	CB 195	LODE	T3N	R97W	15-(SE, SW)
CO106388084	CB 195	LODE	T3N	R97W	22-(NE,NW)
CO106388225	CB 336	LODE	T3N	R97W	8-(SE)
CO106388227	CB 338	LODE	T3N	R97W	8-(SE)
CO106388227	CB 338	LODE	T3N	R97W	9-(SW)
CO106388228	CB 339	LODE	T3N	R97W	8-(NE, SE)
CO106388228	CB 339	LODE	T3N	R97W	9-(NW, SW)
CO106388229	CB 340	LODE	T3N	R97W	9-(SW)
CO106388230	CB 341	LODE	T3N	R97W	9-(NW, SW)
CO106388231	CB 342	LODE	T3N	R97W	9-(SW)
CO106388232	CB 343	LODE	T3N	R97W	9-(NW, SW)
CO106388234	CB 345	LODE	T3N	R97W	9-(NW, SW)
CO106387974	CB 85	LODE	T3N	R97W	27-(NW)
CO106387975	CB 86	LODE	T3N	R97W	27-(NW)
CO106387976	CB 87	LODE	T3N	R97W	27-(NE, NW)
CO106387977	CB 88	LODE	T3N	R97W	27-(NE)
CO106387978	CB 89	LODE	T3N	R97W	27-(NE)
CO106388194	CB 305	LODE	T3N	R97W	9-(SW)
Claim staked but not yet recorded		LODE	T3N	R97W	27-(NW)
Claim staked but not yet recorded		LODE	T3N	R97W	27-(NW)
Claim staked but not yet recorded		LODE	T3N	R97W	27-(NE, NW)
Claim staked but not yet recorded		LODE	T3N	R97W	27-(NE)
Claim staked but not yet recorded		LODE	T3N	R97W	27-(NE)
Claim staked but not yet recorded		LODE	T3N	R97W	27-(NE)

*Note that certain activities are proposed to occur on public lands on which the operator has staked unpatented lode claims but has not filed the related paperwork with BLM or the County. These activities are depicted on **Figure 5** and staked claims are indicated on Table 1.

Coyote Basin Exploration Project

Section 2: Activity Description, Map and Schedule of Activities

Pursuant to 43 CFR 3809.301(b)(2) and 43 CFR 38909.420.

1. **Access and Proposed Disturbance:** The exploration project proposes to access the subject unpatented mining claims by overland travel and established off-road vehicle routes. The project will not result in blading or road construction. The total length of access routes using overland travel is approximately 25,000 feet. See **Exhibit 1 – Access Routes and Disturbance Estimates**. The exploration project consists of three distinct work sites – Rimrock Gulch Zone, Open Gulch Zone 1, and Open Gulch Zone 2. Rimrock Gulch Zone will be accessed by Colorado State Highway 40 and BLM Route 1509 from the north. Open Gulch Zone 1 and Open Gulch Zone 2 will be accessed by Colorado State Highway 64 and County Road 77 from the south. See **Figures 3, 4, and 5** regarding specific drill hole locations and **Figures 14 and 15** regarding access routes. Care will be taken to prevent overuse of existing vehicle routes.

Up to 35 level drill pads measuring no larger than 1,500 square feet each would be established alongside the vehicle routes. The drill pads (i.e., drillhole location) are depicted on **Figure(s) 2-5** and will collectively disturb up to a total of 1.35 acres (See also Figure 2 Updated 25-07-30 at end of this document). Activities incidental to drilling, including equipment storage, temporary stockpiling, and construction of containment sumps, will either take place directly within or adjacent to drill pad area and where applicable on existing vehicle routes.

2. **Commodity:** The goal of the exploration project is to identify the extent of subsurface minerals, specifically uranium and vanadium.
3. **Equipment and Materials:** Exploration drilling would be conducted using a drill rig, various support equipment, and a drill crew. Reverse circulation drilling would be used. Development and reclamation of the drill pads would be conducted using a mini-excavator. See Table 2 below. Equipment would be staged adjacent to drill pads and workers would park in or near the equipment staging area.

Table 2. Equipment

Equipment Type	Number
Track-Mounted or Tire-Mounted Drill Rig	1
Compact mini-excavator/Back-hoe	1
ATVs or Side-by-Sides	2
2,000 to 4,000-Gallon Water Truck	1
Compressors, Generators, and Light Plants	2 to 4
Trailer/Connex (for storage)	1 to 2
Portable Toilets/Handwash Stations	1 to 2
Flatbed Truck and Trailer	1 to 2
Pickup Trucks/Passenger Vehicles	4 to 6

Non-potable water and non-toxic approved drilling fluids will be utilized for drilling. Drilling fluids, small quantities of petroleum products (e.g., grease tubes, etc.), and small tools will be stored on-site on pallets or inside of a trailer/connex. No on-site bulk fuel storage is proposed. Fuels and lubricants for

Coyote Basin Exploration Project

drilling and support equipment will be delivered by a maintenance truck as needed, and hydroseed applied at the time of reclamation would be provided by a third-party. Spill kits will be readily accessible on-site within the equipment staging and storage area. Deliveries to the site will occur during daytime hours.

4. **Exploration Operations:** Shift Exploration intends to establish up to 35 drill pads with one drill hole per each pad. Drill holes will be cased and approximately 4.5 to 5.5 inches in diameter. The anticipated drill type will be the Foremost Explorer 1500 Buggy Drill or similar. The drill program includes laydown areas measuring 30 feet by 50 feet for storage and staging of materials and equipment to support drilling operations, but are separate from the active drill pads. **Figures 6, 7, and 8** identify planned laydown areas, where little or no vegetation exists. Within the laydown areas, drill rods, spare parts, lubricants, and consumables (e.g., bentonite and cement bags) will be stored using pallets and berms. The laydown areas will also feature a small tool rack or lockable job box, stacked empty drums, extra liners and minor rigging gear. Samples bags, chip trays, and sieves will be temporarily stored in laydown areas before being moved to the logging area. All materials stored within laydown areas will be placed on pallets or geotextile fabric to avoid or minimize ground disturbance and simplify cleanup. Temporary fencing may be erected around the perimeter of laydown areas to delineate storage areas. Fuel will not be stored in laydown areas and any other liquids (i.e., lubricants) will be placed in secondary containment.

A portable toilet will be kept onsite within the footprint of a drill pad where work is occurring or within the laydown area. The portable toilet will be moved to another pad or laydown area after each drillhole (or set of drillholes per laydown area) has been completed, and removed from the project area at the end of the drill program outlined in this Notice. The connex/trailer will be located either within the drill pad or the laydown area.

The Coyote Basin Project will also utilize trenches approximately 865 square feet and measuring 131 feet by 6.6 feet. Trenches will be approximately 5 feet deep and be constructed using the compact mini-excavator and trench footprints will include space required for spoils. The area will be sprayed with water to reduce dust as needed, and later covered by a tarp until the trench has been viewed and logged by a geologist, and sampled. The total disturbed area for the trench, which includes spoils, is approximately 131 ft x 13 ft. Total disturbance is estimated at 0.1 acres.

Reclamation will commence immediately following completion of each drillhole and the draining of the attendant sump. Drilling, drill hole abandonment, grading and pad reclamation contouring per drill pad is expected to take approximately 4-6 hours from start to finish.

No drill holes are anticipated to encounter groundwater. Drill holes will be approximately 300 to 1,000 feet deep. If an artesian well or drillhole intersecting the water table is encountered, each drill hole will be plugged and cemented to appropriately seal the drillhole. The plug and cement will prevent uncontrolled flow of water from occurring if this groundwater condition is encountered. Each drill pad will measure approximately 50 feet long x 30 feet wide and be constructed and graded to support drilling equipment.

At each drill pad, a sump within the drill pad footprint will be excavated to collect drill cuttings, to manage and circulate drilling fluids, and to manage excess water. Each sump would be fenced (temporary) to prevent wildlife from entering the sump. Fencing will be temporary and removed following the reclamation of each drill pad. The sumps will be visually inspected by on-site personnel to ensure no overflow occurs. Excavated material from sump construction will be stockpiled within the drill pad and used in restoration after the completion of drilling.

To the extent feasible, drill pads will be constructed in areas without vegetation. For drill pads which

Coyote Basin Exploration Project

require vegetation removal, ground disturbance will be kept to the minimum amount necessary for safe access and working area for equipment and crews. Cleared vegetation would be side-cast and removed from the site either before or concurrent with site restoration activities. To prevent unnecessary and undue degradation, Shift Exploration will implement reclamation measures concurrent with operations, which are expected to occur within the work window of August 1 to December 31. For example, and in addition to the other best practices discussed herein, topsoil will be salvaged and stockpiled to prevent erosion or cross-contamination. Surface disturbances will be minimized to smallest area required for operations and will follow natural contours, and wattles or temporary silt fences will be used to demarcate and protect vegetation surrounding the project area. After each drillhole is abandoned, stockpiled topsoil will be distributed promptly to blend with the natural landscape and to match existing slopes to facilitate drainage and prevent erosion. Regarding revegetation, operators will spread a seed mix provided by BLM over replaced topsoil and apply erosion control (mulch, hydromulch, wattles, or other suitable option) to support plant establishment in dry conditions. Where required, barriers will be installed around sumps, stockpiles, and drill pads to prevent sediment migration and to protect vegetation downslope. Lastly, a natural buffer zone of undisturbed vegetation will be maintained around the area of active operations.

5. **Water and Waste:** Consistent with best management practices, drill cuttings will be contained within sumps. Drill cuttings will be returned to the hole as much as possible during hole abandonment. Non-potable water supplied from a water truck will be used for dust control. Portable toilets and handwash stations, and bottled drinking water, will be provided for on-site personnel. Other than municipal waste, the drilling operation is not anticipated to produce deleterious waste that requires disposal. All trash bins will have lids and be serviced by a permitted company.
6. **Utilities:** There are no known underground or overhead utilities that will be affected by the proposed drilling.
7. **Period of Operation:** The drilling would take place between August 1, 2025 and December 31, 2025 over an approximate 40- to 60-day period (consecutive and non-consecutive days) for up to 24 hours per day (2 shifts – day and night shift). Although not anticipated, temporary suspension of the exploration drilling could occur during severe weather conditions, including fires or poor air quality resulting from fires, or lack of equipment, supplies or personnel. If temporary suspension becomes necessary, incomplete drill holes would be covered or backfilled, equipment would be secured or moved off-site, and erosion control measures would be deployed.
8. **Reclamation Completion:** Shift Exploration will complete reclamation (discussed below) immediately after the completion of drilling. Reclamation is expected to be completed by December 31, 2025, assuming drilling begins in August 2025 as proposed.

Section 3: Reclamation Plan and Cost Estimate

Pursuant to 43 CFR 3809.301(b)(3) and (b)(4), 43 CFR 3809.420, and 43 CFR 3809.552.

1. **Reclamation Plan and Cost Estimate:** Pursuant to C.R.S. § 34-32-113 of the Colorado Mined Land Reclamation Act and 43 C.F.R. Part 3809 (BLM's Surface Management Regulations), Shift Exploration has prepared the reclamation plan described below and the attached Reclamation Cost Estimate (RCE). See attached **Exhibit 2 – Reclamation Cost Estimate**.

After completing the exploratory drilling, clean-up and grading will take place where possible. Sumps will be given time to dry out, and rehabilitation of the sump will commence as soon as possible.

Coyote Basin Exploration Project

Rehabilitation will include filling and sealing the drill holes¹, backfilling the sumps, and rough grading of the drill pads. The site will be restored to resemble the approximate original contour and to blend with the surrounding topography where possible.

Any topsoil removed as a result of drill pads, trenches and laydown areas will be stockpiled adjacent to the disturbed area. For drill pads where vegetation was removed, the pad will be decompacted to a depth of up to one foot. Stockpiled topsoil would be evenly distributed over the pad, and the pad will be reseeded using a mix of desert grasses, cactus, sage brush, and juniper tree. Reseeding will be performed using hydroseeding or broadcast seeding. To the extent feasible, the timing of reseeded will coincide with forecasted rain to allow for seed to germinate.

All equipment, stockpiles, and trash/debris associated with the drilling program will be removed from the site.

An RCE has been prepared pursuant to the requirement for a site restoration security deposit. Following BLM approval of the RCE, a performance bond or certificate of deposit matching the RCE would be submitted to BLM.

¹ Drill holes will be abandoned in accordance with the Colorado Department of Natural Resources, Division of Reclamation, Mining and Safety regulations, specifically 2 CCR 407-1 (Rule 5.4 Abandonment of Prospecting Drill Holes).

Coyote Basin Exploration Project

Exhibit 1: Disturbance Estimate

Activity	#	Length (ft)	Width (ft)	Depth (ft)	Sq Ft	Acres Used	Considered Disturbance Y/N	Acres of Disturbance	Comments
Drill pads	37	50.00	30.00		55,500.00	1.27	Y	1.3	
Access Roads	40	23,600.39	6.00		141,602.36	3.25	N		Overland travel.
Trenches	2	131.00	13.00		3,406.00	0.08	Y	0.1	
Laydown Areas	5	50.00	30.00		7,500.00	0.17	N		No clearing required. Naturally cleared areas will be used.
Total						4.78		1.35	

Please note that this updated table replaces the Table in Exhibit 1 of the document submitted July 28th: Access Routes and Disturbance Estimates, Coyote Basin Project, Shift exploration Inc.

Coyote Basin Exploration Project

Exhibit 2: Reclamation Cost Estimate

COYOTE BASIN PROJECT RECLAMATION CONSTRUCTION COST - BID ESTIMATE SHEET

RECLAMATION

Backfill sumps, rip and grade pads at 1 hr/pad (plus movement) and 3 hours per trench, and reseed drill pads/trenches. Water truck for dust control. Added time for travel.

(↑ Describe Reclamation Activity Being Estimated)

Methods to be used:

A. Equipment - List equipment to complete identified task.

Equipment	Unit of Measure	\$/Unit	# of Units	Cost (\$)
Mini-Excavator/backhoe (backfill sumps, rip/grade pads)	Hour	\$150.00	44.0	\$6,600
Water Truck (3,000-gallon typical)	Hour	\$125.00	44.0	\$5,500
Hand Broadcast Seeder	EA	\$22.98	1.0	\$23
Shovel	EA	\$69.00	1.0	\$69
		\$0.00	0.0	\$0
		\$0.00	0.0	\$0
Total Equipment Cost for this Task =				\$12,192

B. Labor - List all labor categories to complete identified tasks

Labor Category	\$/Hour (prevailing wage)	Labor Surcharge/Hr (where applicable) (enter % of wage)	# of Units	Cost (\$)
		0.0%		
Laborer - Group 3 (Seeding) - Hours	\$69.49	\$0.00	44.0	\$3,058
Travel to site (labor + truck) - Day	\$860.00	\$0.00	5.0	\$4,300
Post-Reclamation monitoring - Day, 2 days	\$860.00	\$0.00	2.0	\$1,720
	\$0.00	\$0.00	0.0	\$0
	\$0.00	\$0.00	0.0	\$0
	\$0.00	\$0.00	0.0	\$0
Total Labor Cost for this Task =				\$9,078

C. Materials - List all materials required to complete identified task

Item/Plant Species	Unit of measure	\$/Unit	Sales tax (enter local rate in %)	Quantity	Cost (\$)
			0.0%		
Desert Sage Scrub Mix at 39 lbs/acre (w/shipping costs approximated)	Bag	\$20.00	\$0.00	44.0	\$880
Cement	Bag	\$10.00	\$0.00	190.0	\$1,900
		\$0.00	\$0.00	0.0	\$0
		\$0.00	\$0.00	0.0	\$0
		\$0.00	\$0.00	0.0	\$0
		\$0.00	\$0.00	0.0	\$0
		\$0.00	\$0.00	0.0	\$0
Total Materials Cost for this Task =					\$2,780

D. Total Direct Cost for this task

Equipment Cost + Labor Cost + Materials Cost = \$24,050

Coyote Basin Exploration Project

Coyote Basin Exploration Project

Reclamation Cost Estimate - Shift Exploration Inc.

This Restoration Cost Estimate (RCE) has been prepared for Shift Exploration Inc. to satisfy the requirement from BLM for bonding the closure of up to 86 drill holes on 43 drill pads.

Item No.	Item Description	Unit	Qty	Unit Price	Total Price
1	Drill Hole Closure: 38 drill holes to be closed	EA	38	\$ 450.00	\$ 17,100.00
2	Backfill sumps, rip and minor grading of drill pads, and reseeding drill pads. Calculations include Equipment, Labor, and Materials.	EA	1	\$ 24,049.54	\$ 24,049.54
Subtotal					\$ 41,149.54

Restoration Bid Estimate Total		\$ 41,149.54
<i>The following are County fees and indirect costs</i>		
Mobilization (estimated at 5%)	5.0%	\$ 2,057.48
Contingency	10.0%	\$ 4,114.95
County Administration	15.0%	\$ 6,172.43
Bond Total (Recommended)		\$ 53,494.40

Prepared by: Nancy Normore

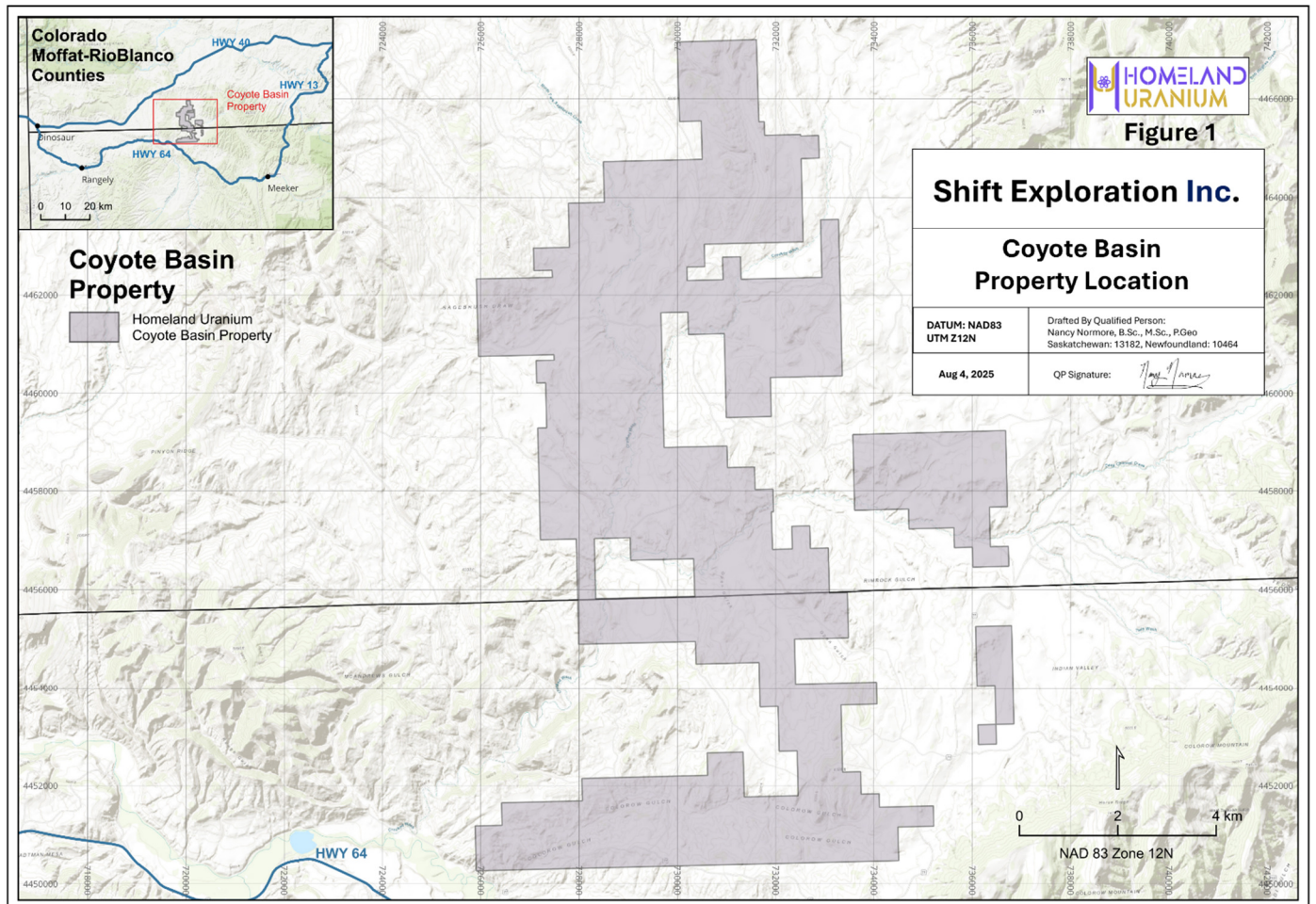
Date: July 2025

BLM Admin Fee 19.84% X\$41,149.54 = \$8,164.07

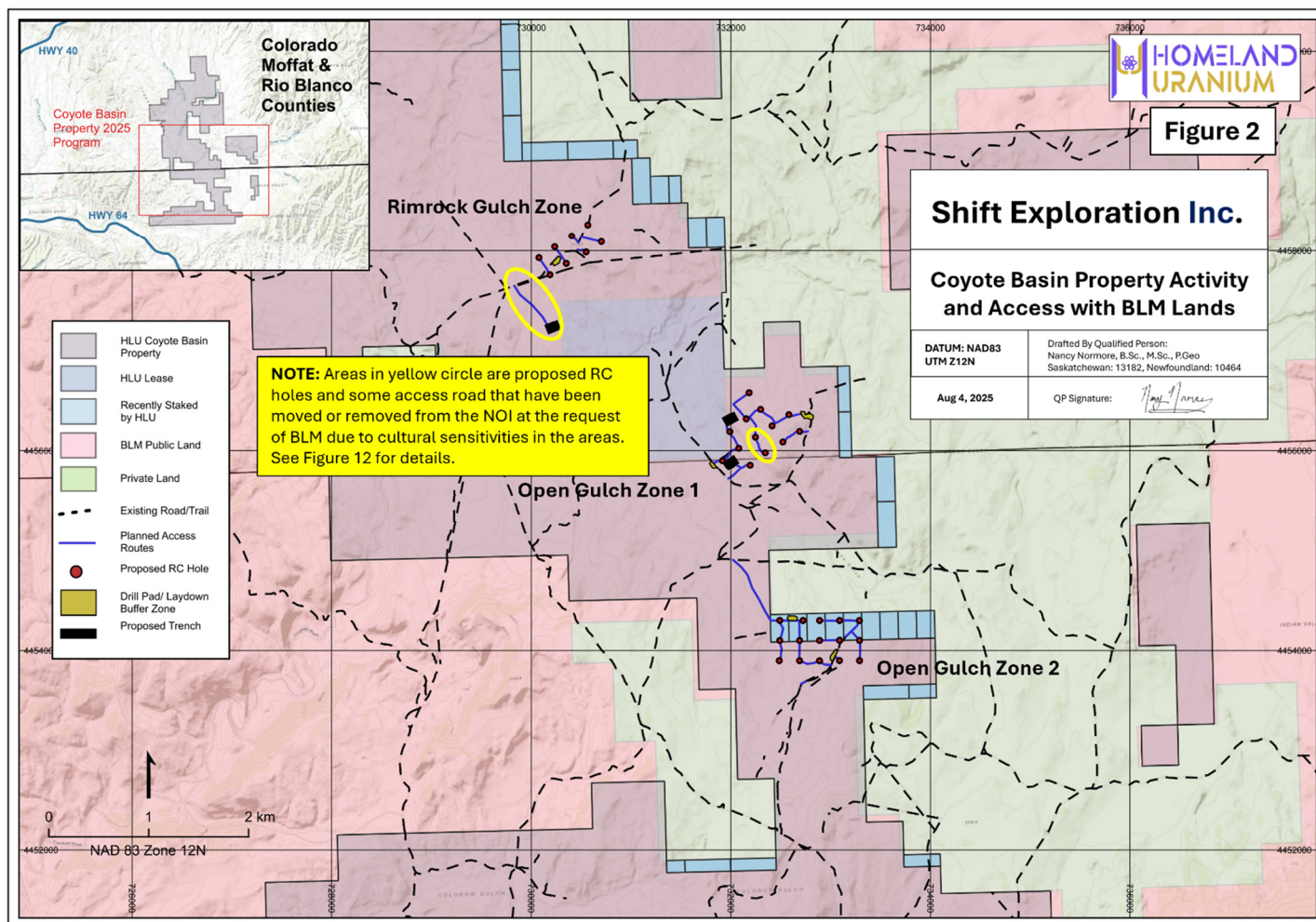
New Bond Total: \$61,658.47

Coyote Basin Exploration Project

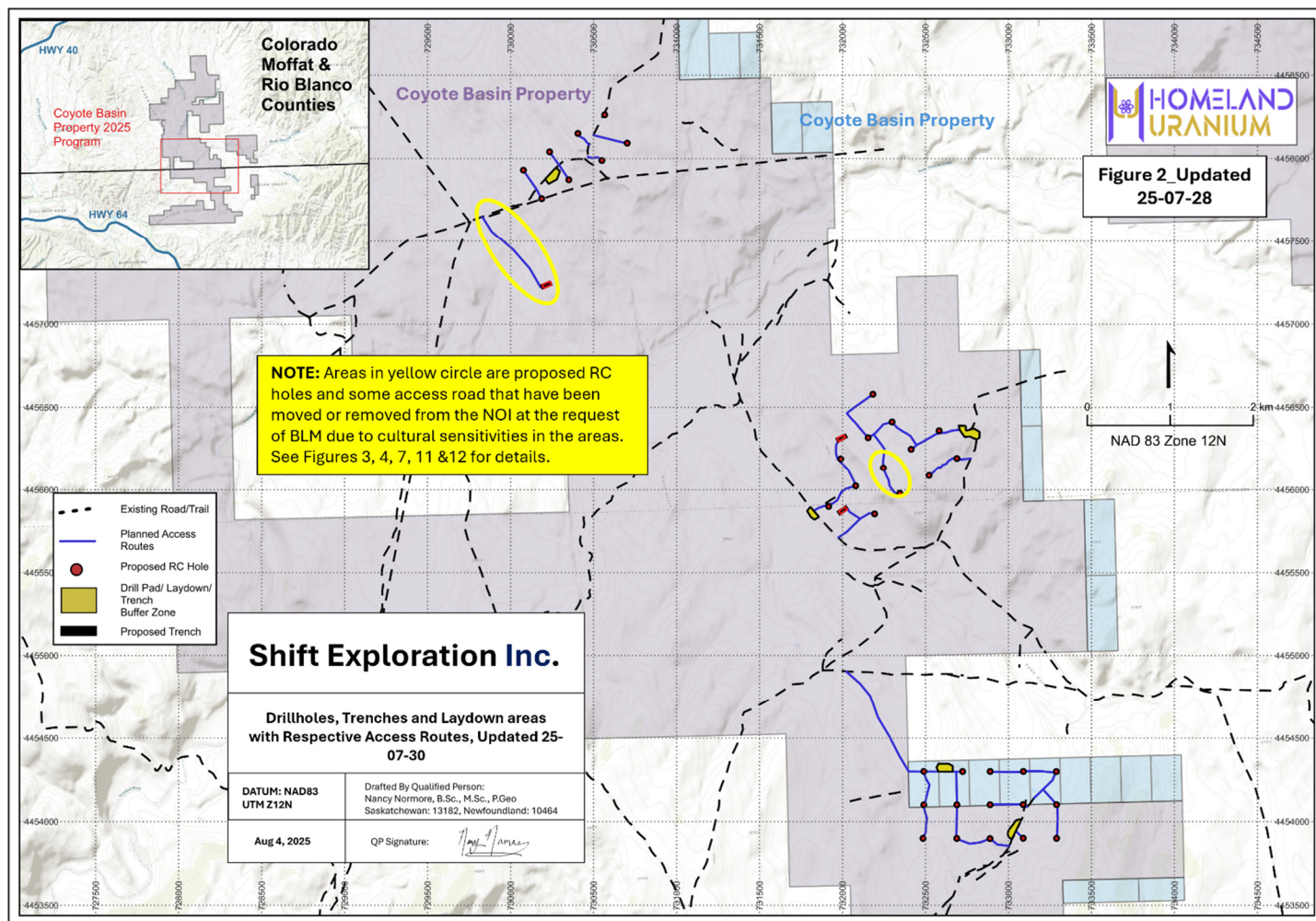
Figures:



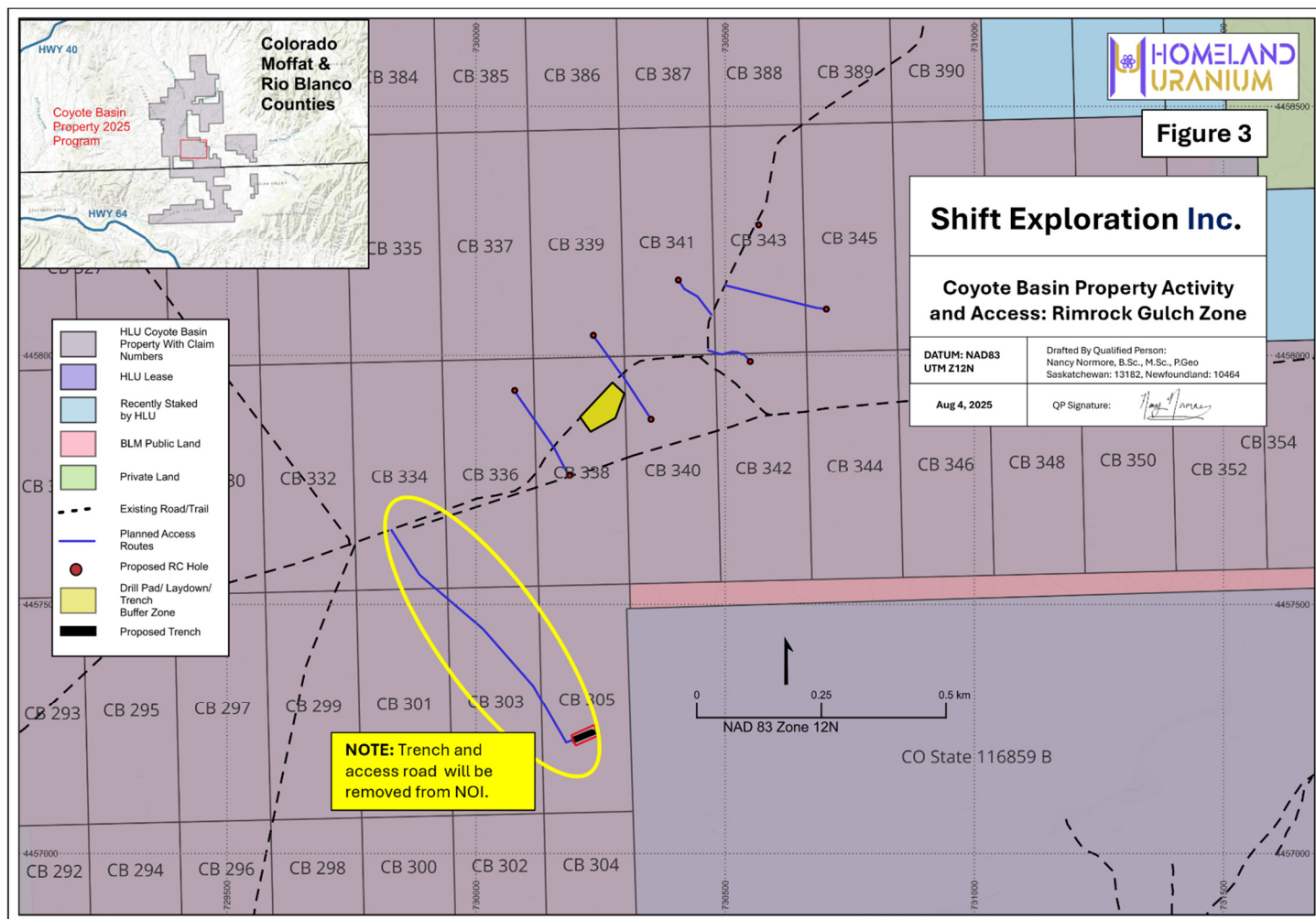
Coyote Basin Exploration Project



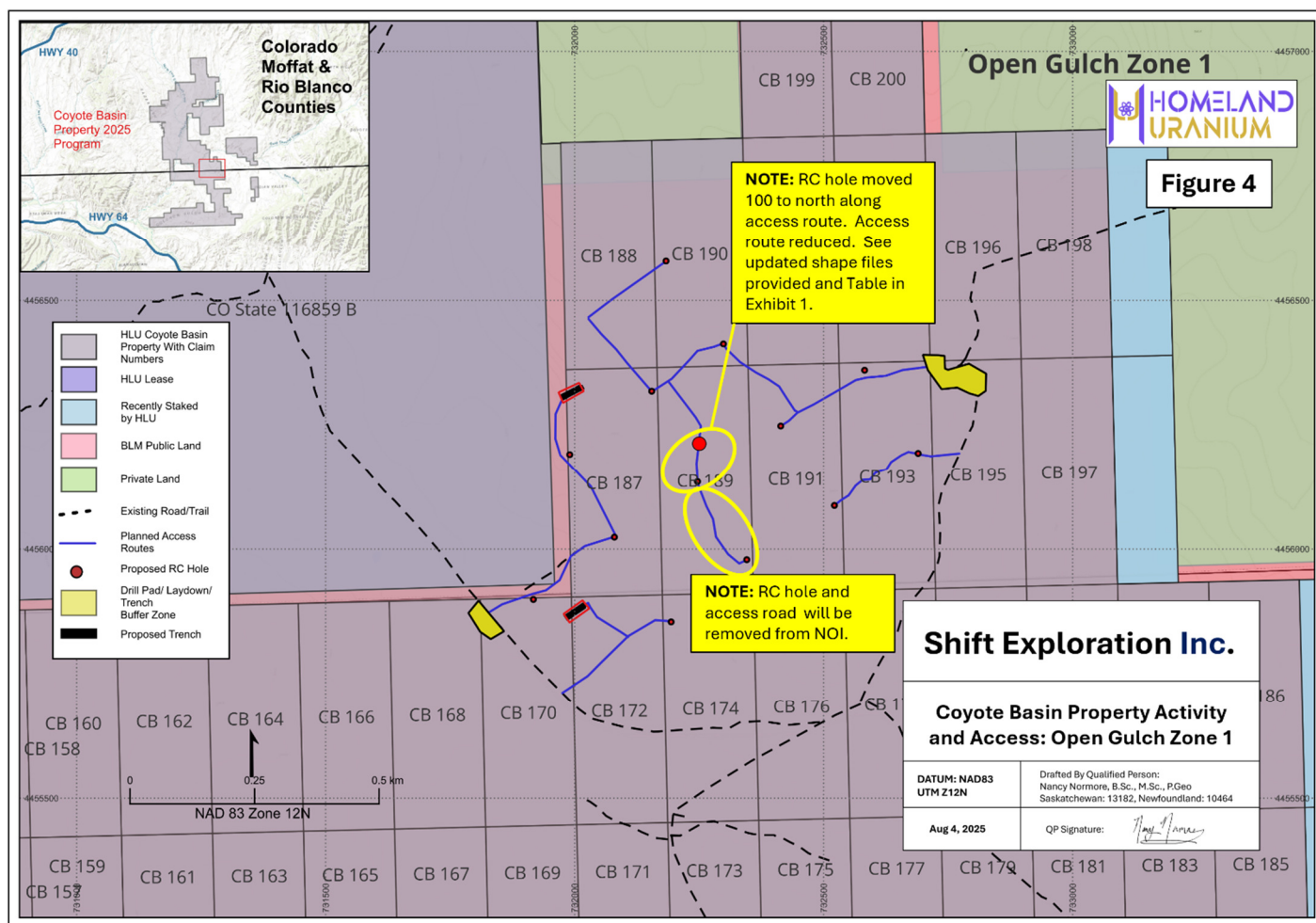
Coyote Basin Exploration Project



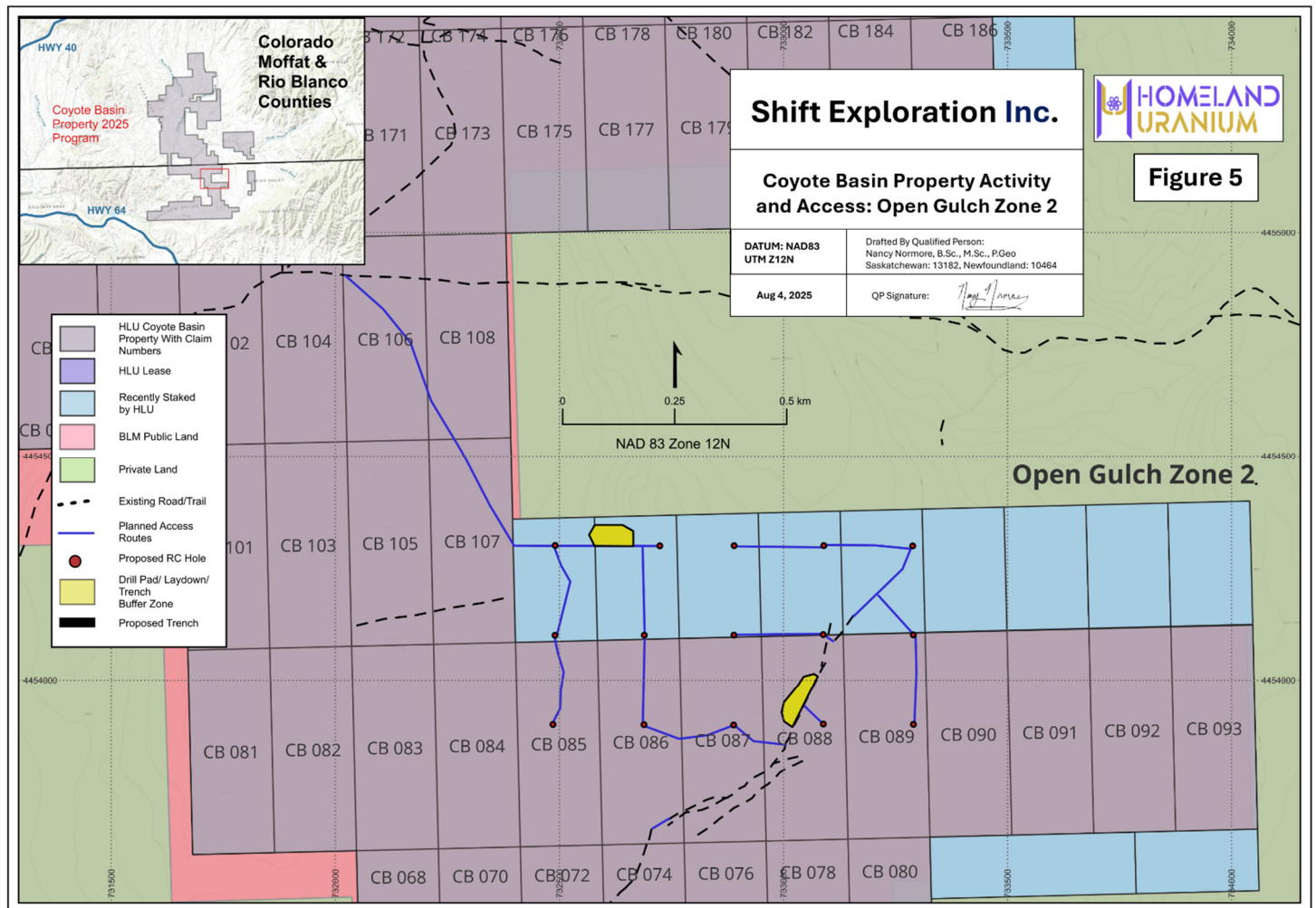
Coyote Basin Exploration Project



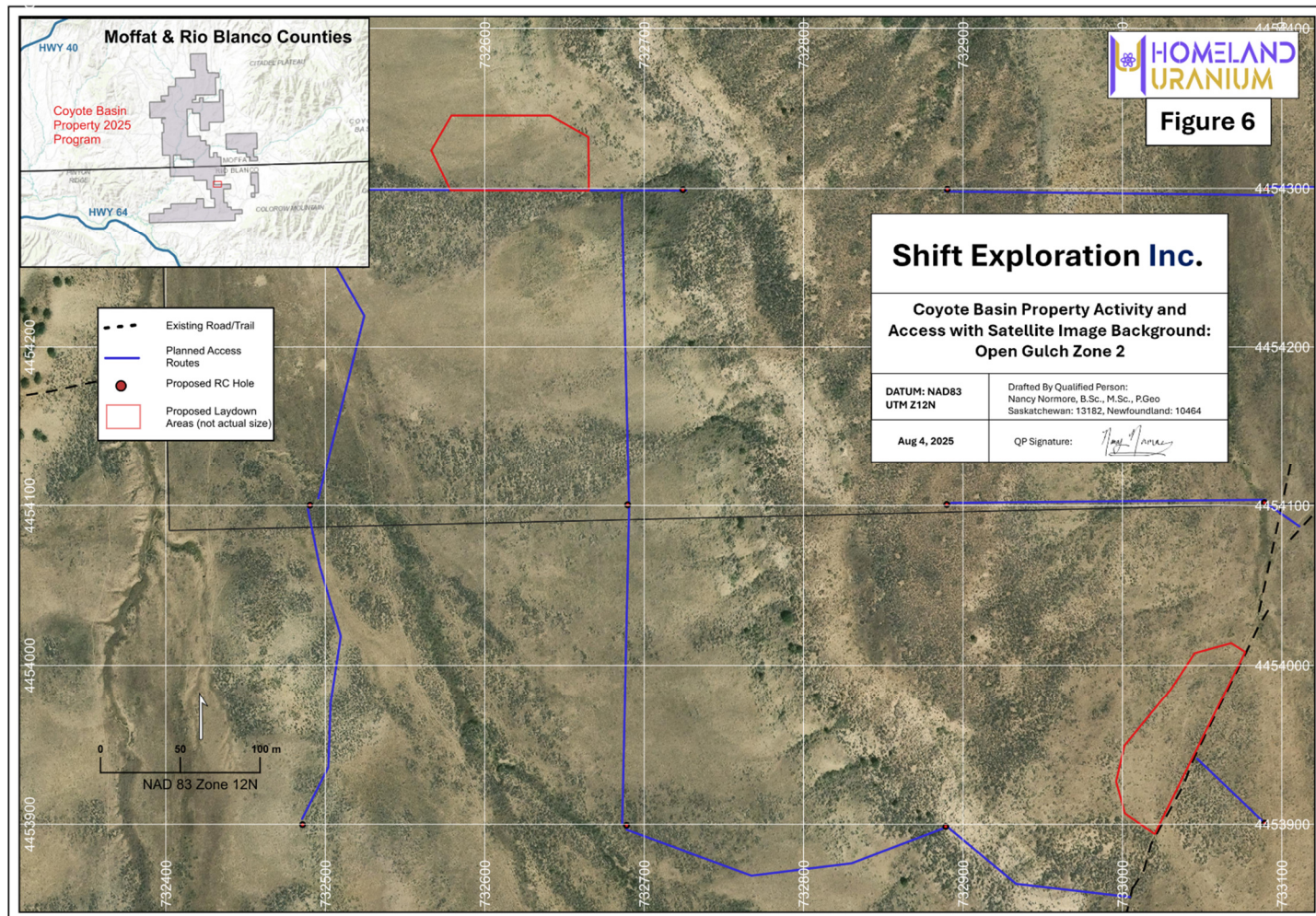
Coyote Basin Exploration Project



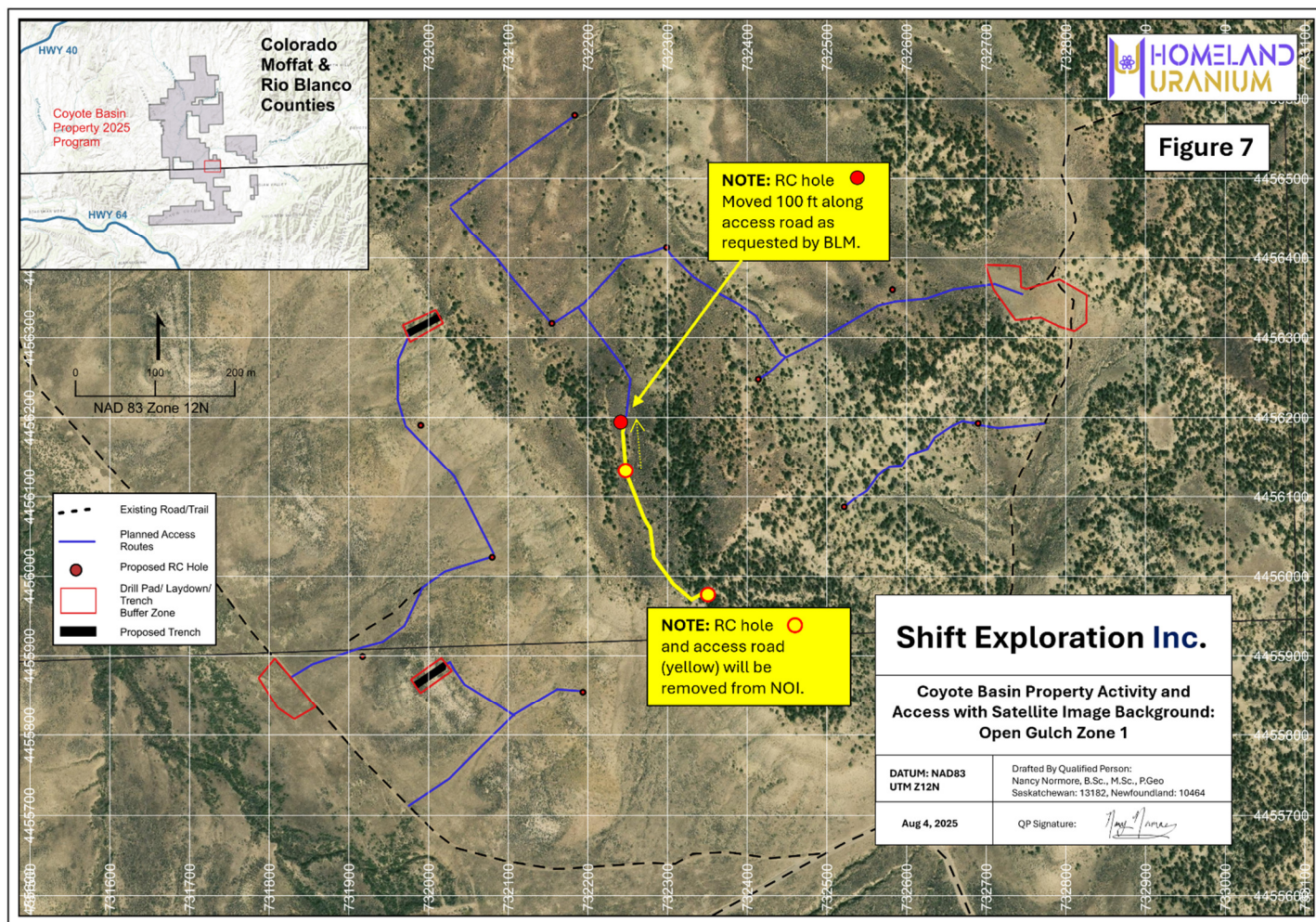
Coyote Basin Exploration Project



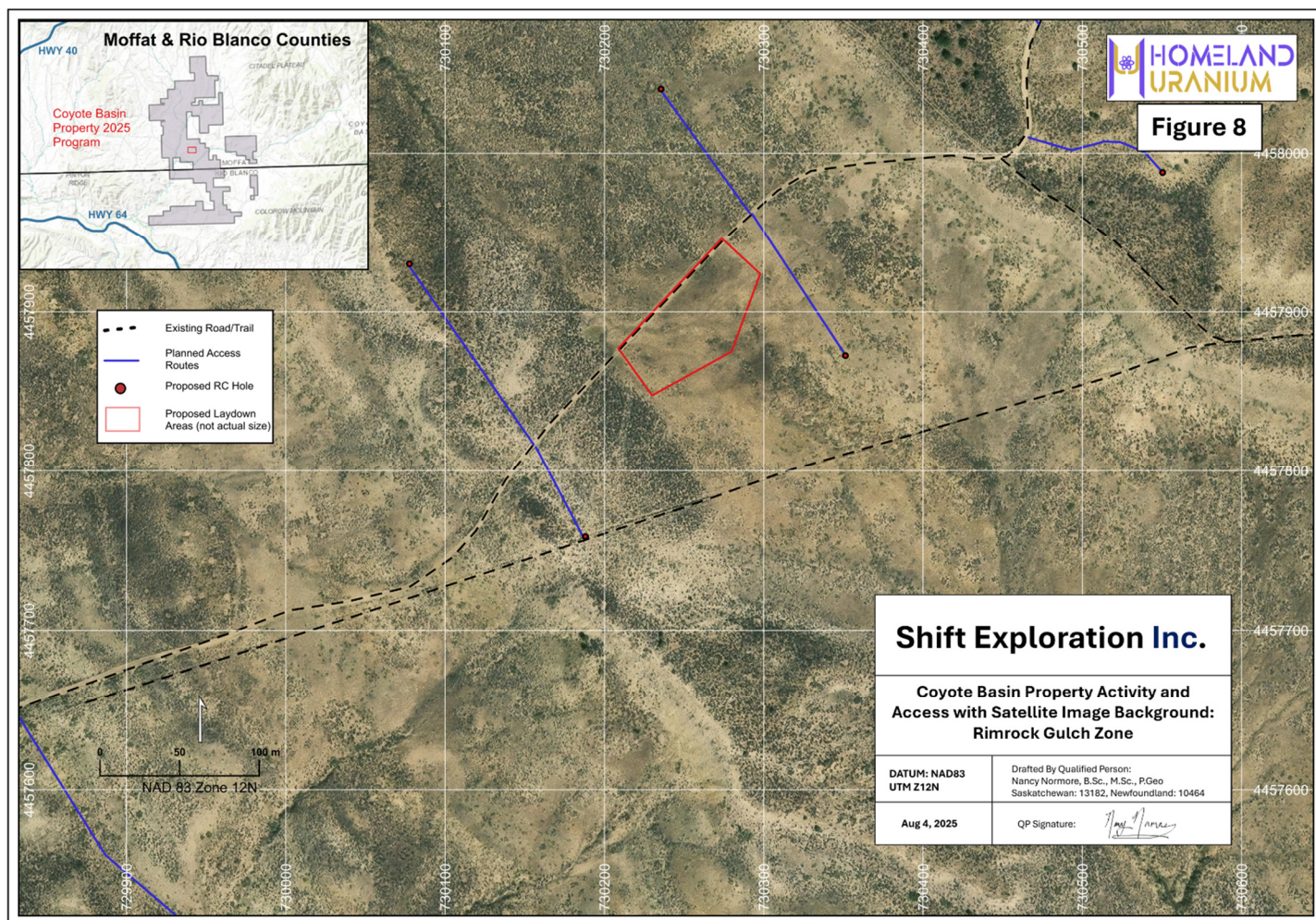
Coyote Basin Exploration Project



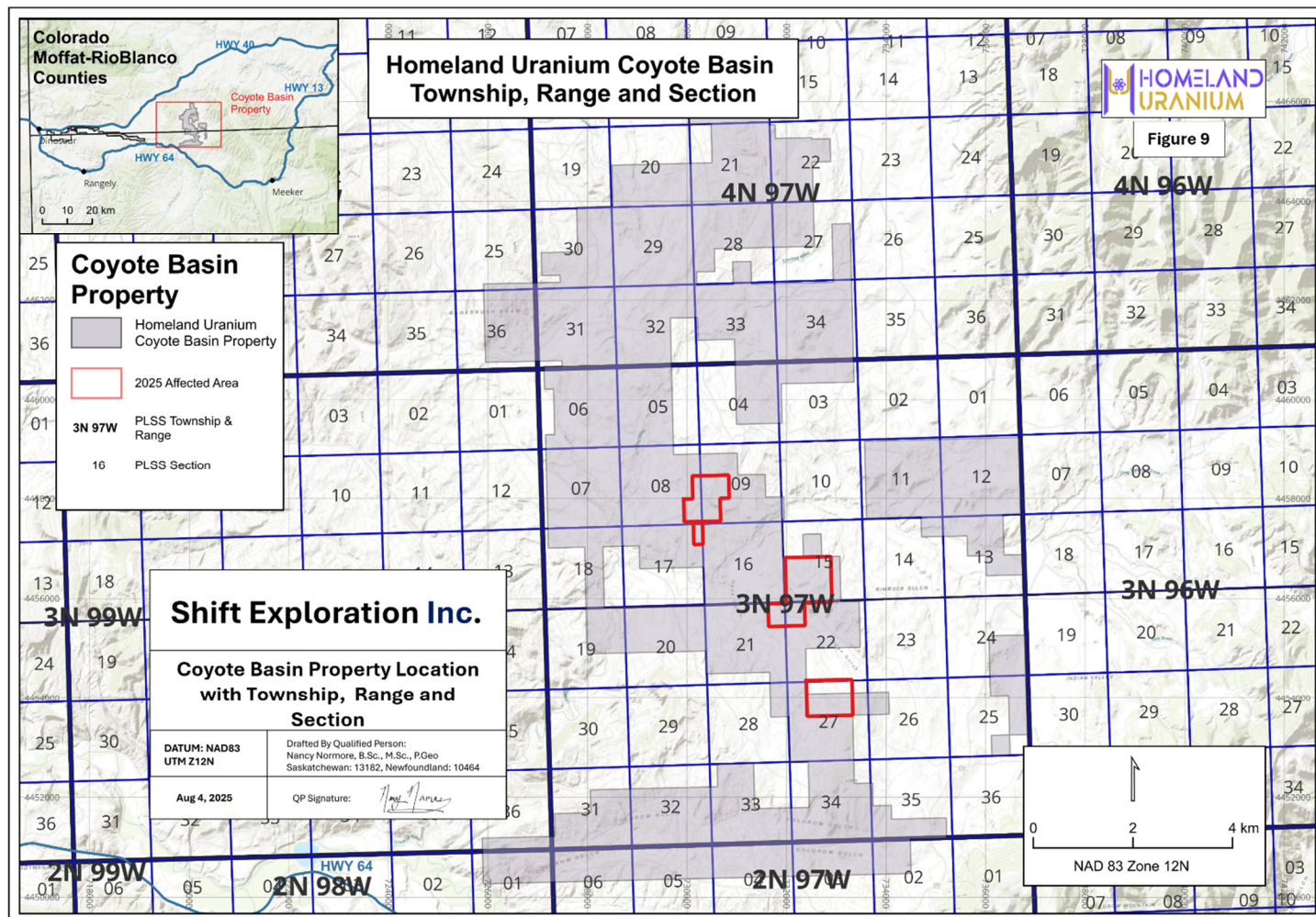
Coyote Basin Exploration Project



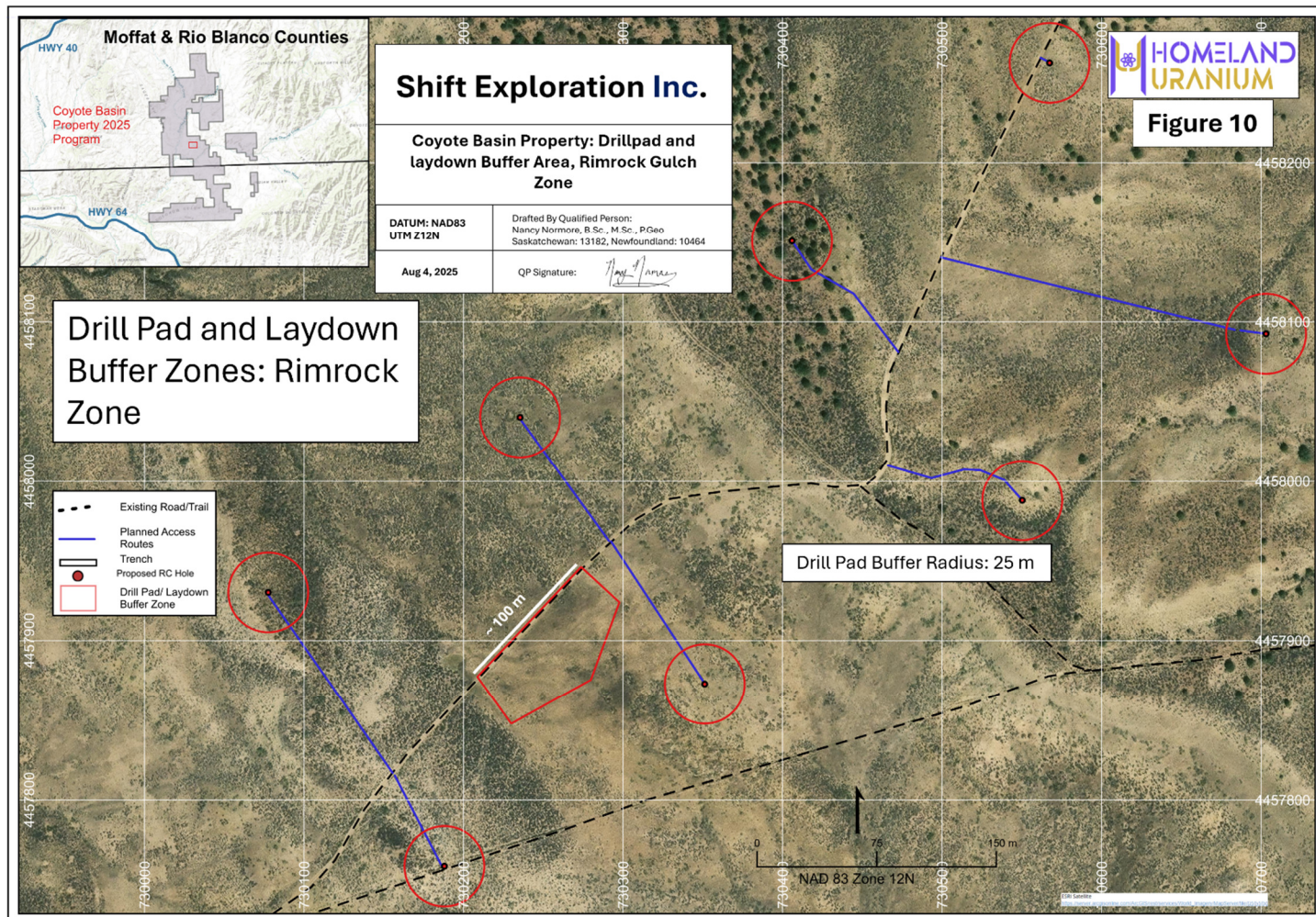
Coyote Basin Exploration Project



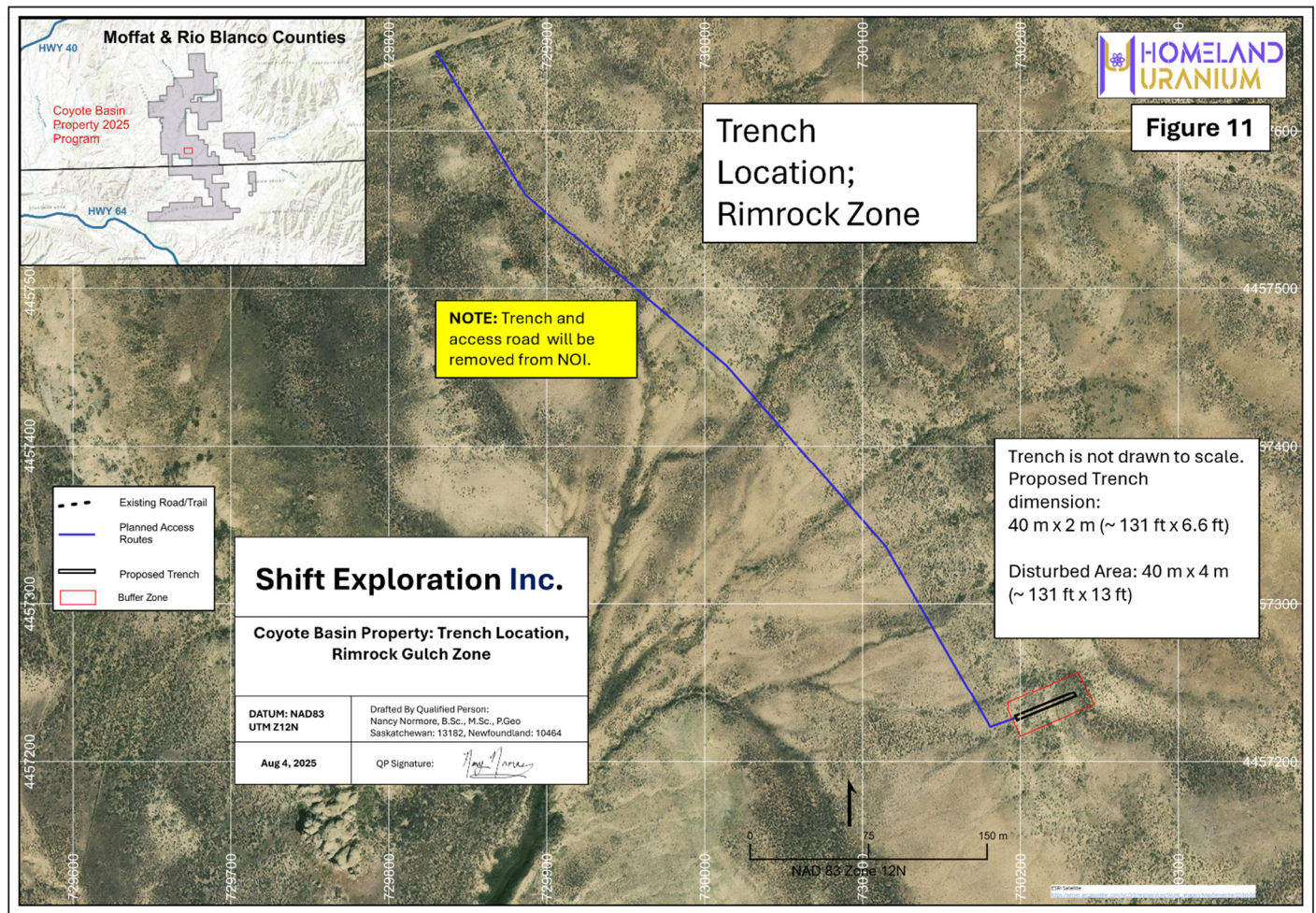
Coyote Basin Exploration Project



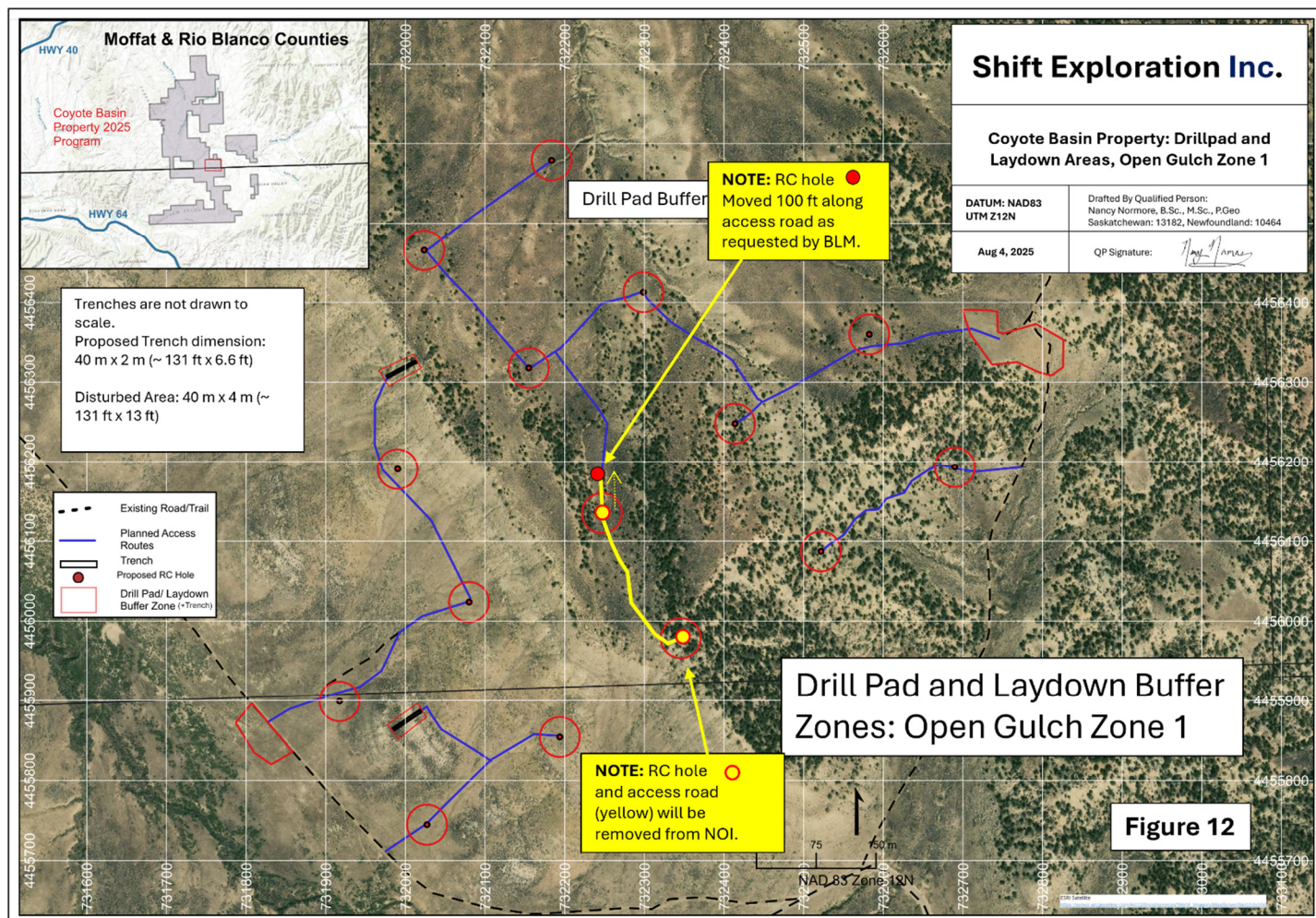
Coyote Basin Exploration Project



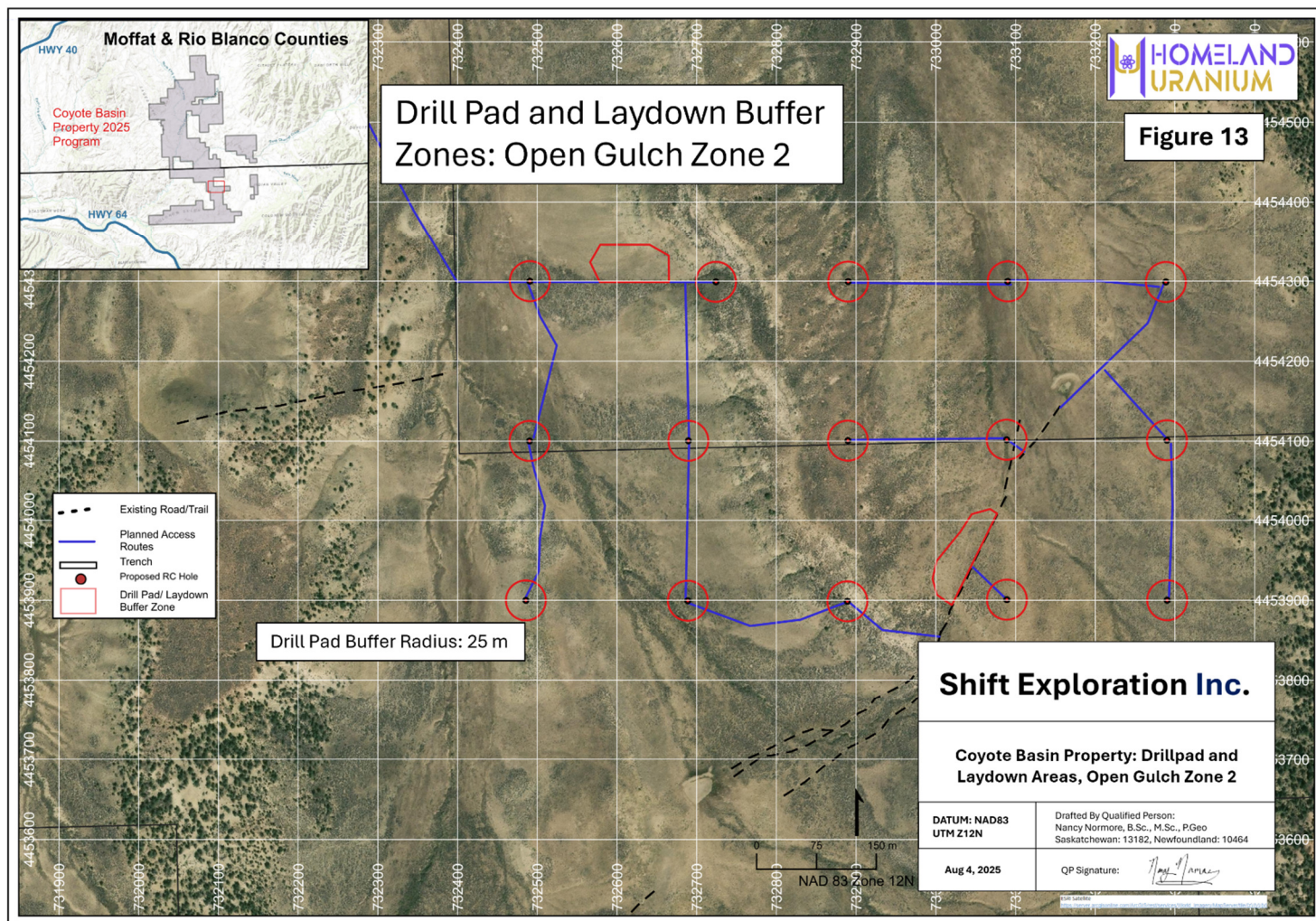
Coyote Basin Exploration Project



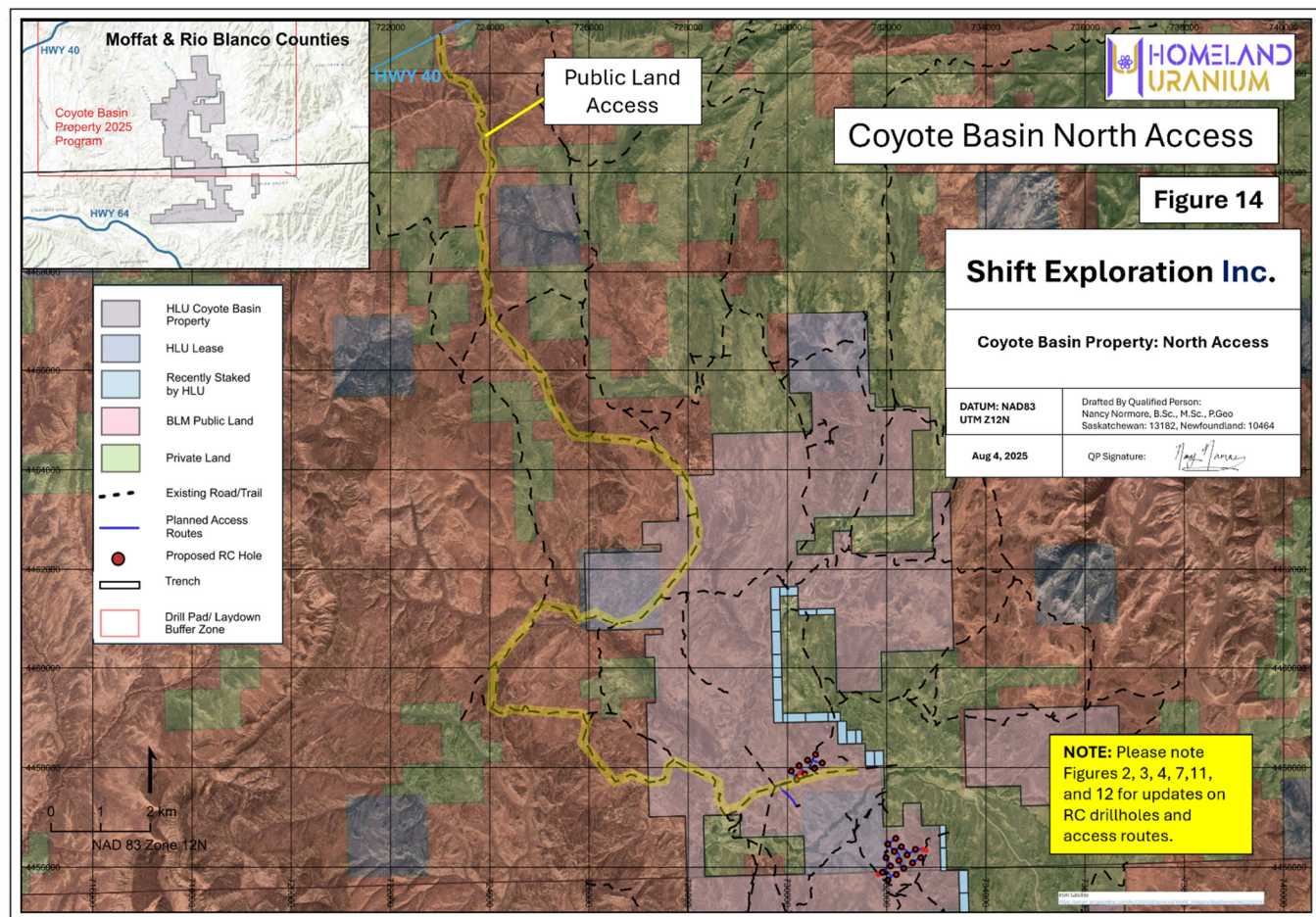
Coyote Basin Exploration Project



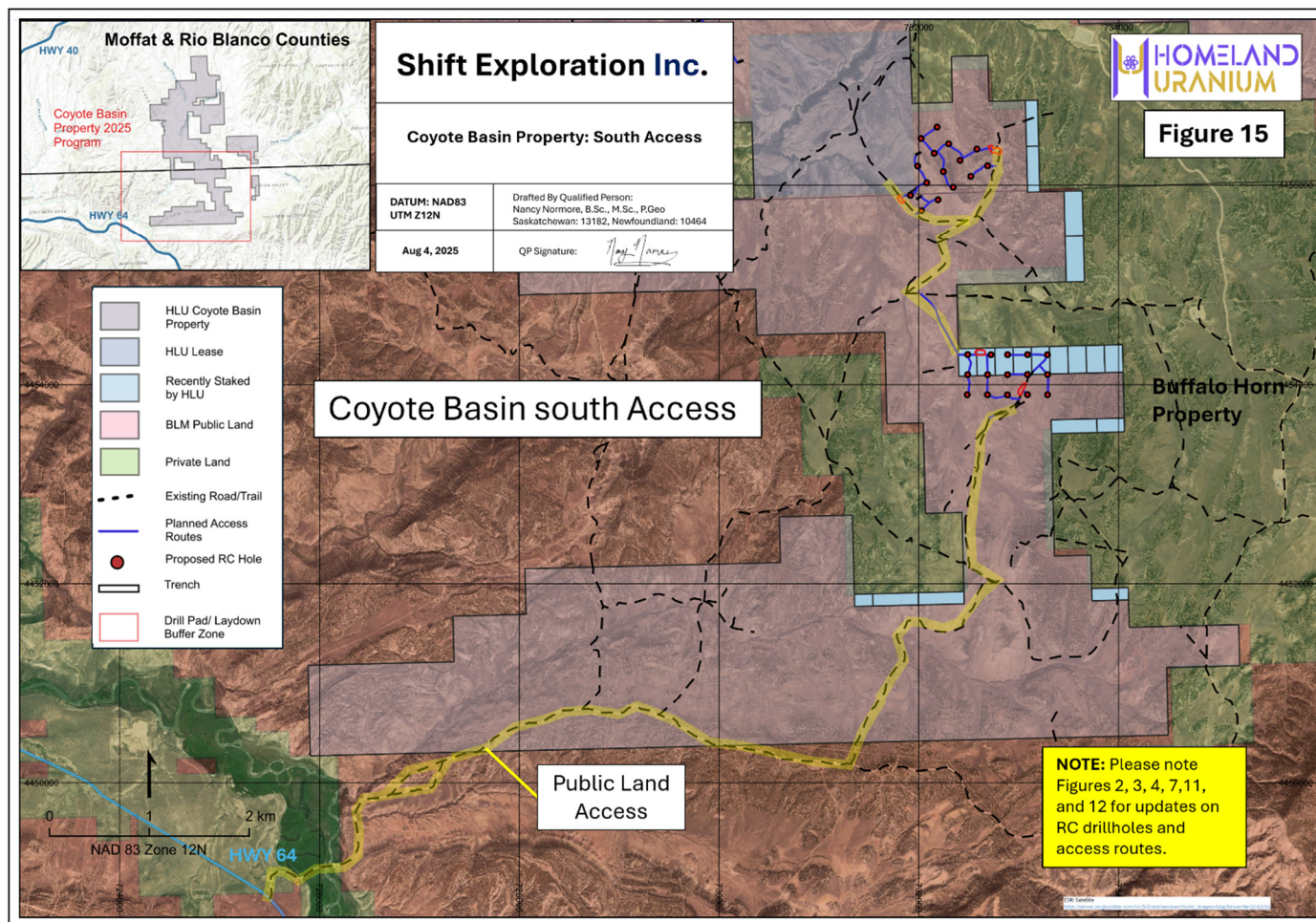
Coyote Basin Exploration Project



Coyote Basin Exploration Project



Coyote Basin Exploration Project



**Colorado
Moffat-RioBlanco
Counties**

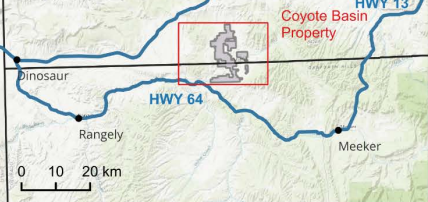


Figure 1

Shift Exploration Inc.

**Coyote Basin
Property Location**

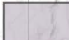
DATUM: NAD83
UTM Z12N

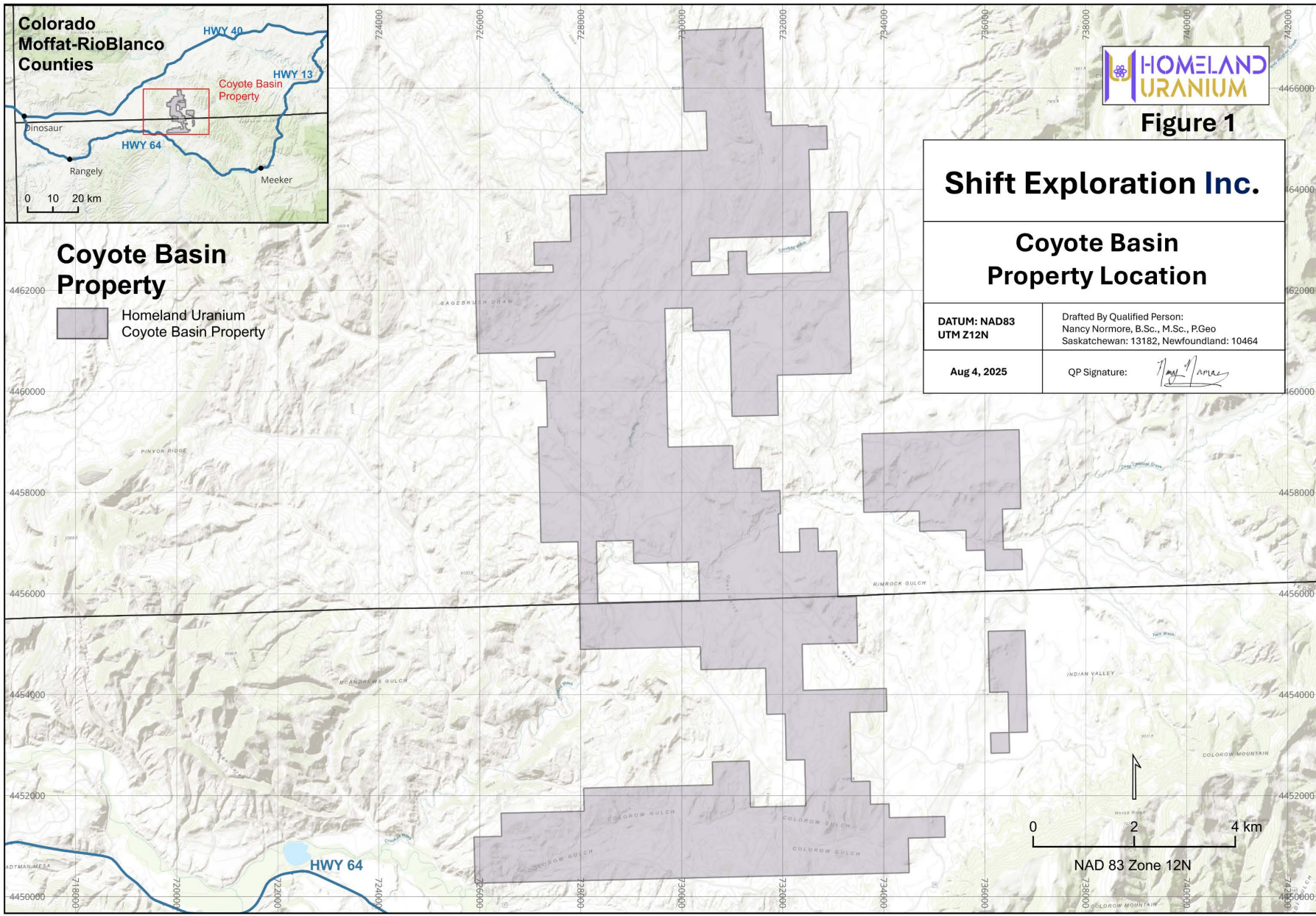
Drafted By Qualified Person:
Nancy Normore, B.Sc., M.Sc., P.Geo
Saskatchewan: 13182, Newfoundland: 10464

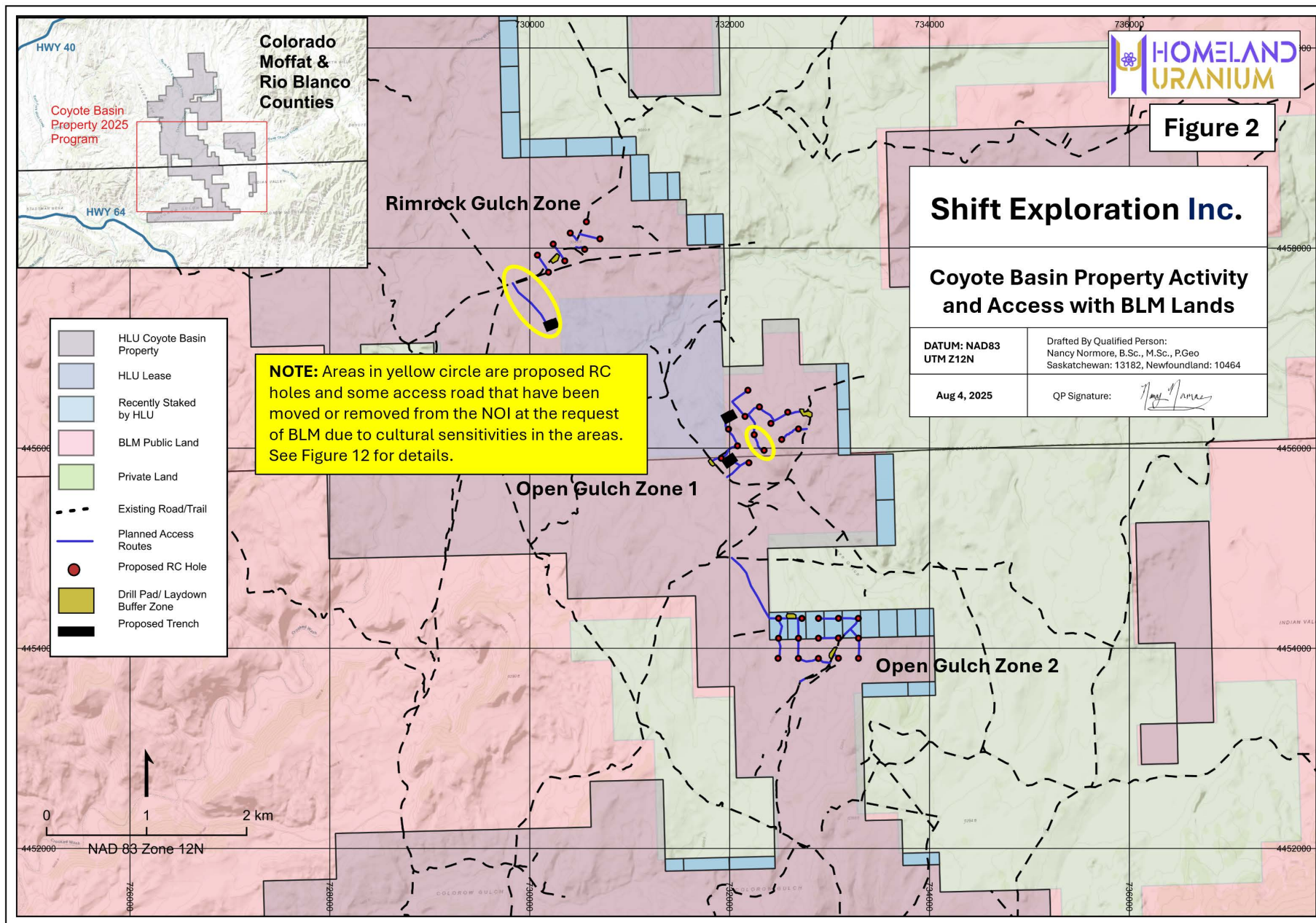
Aug 4, 2025

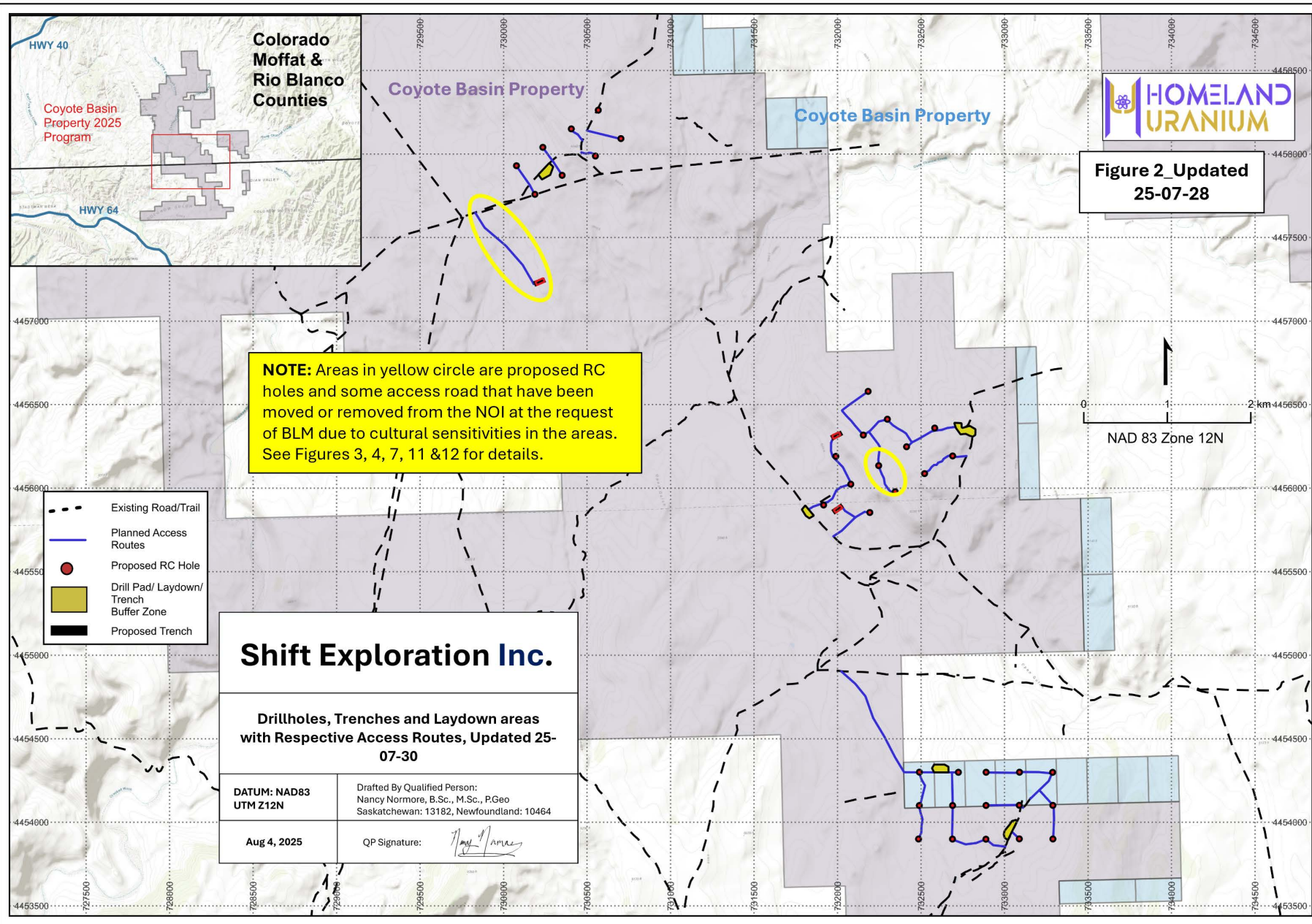
QP Signature:

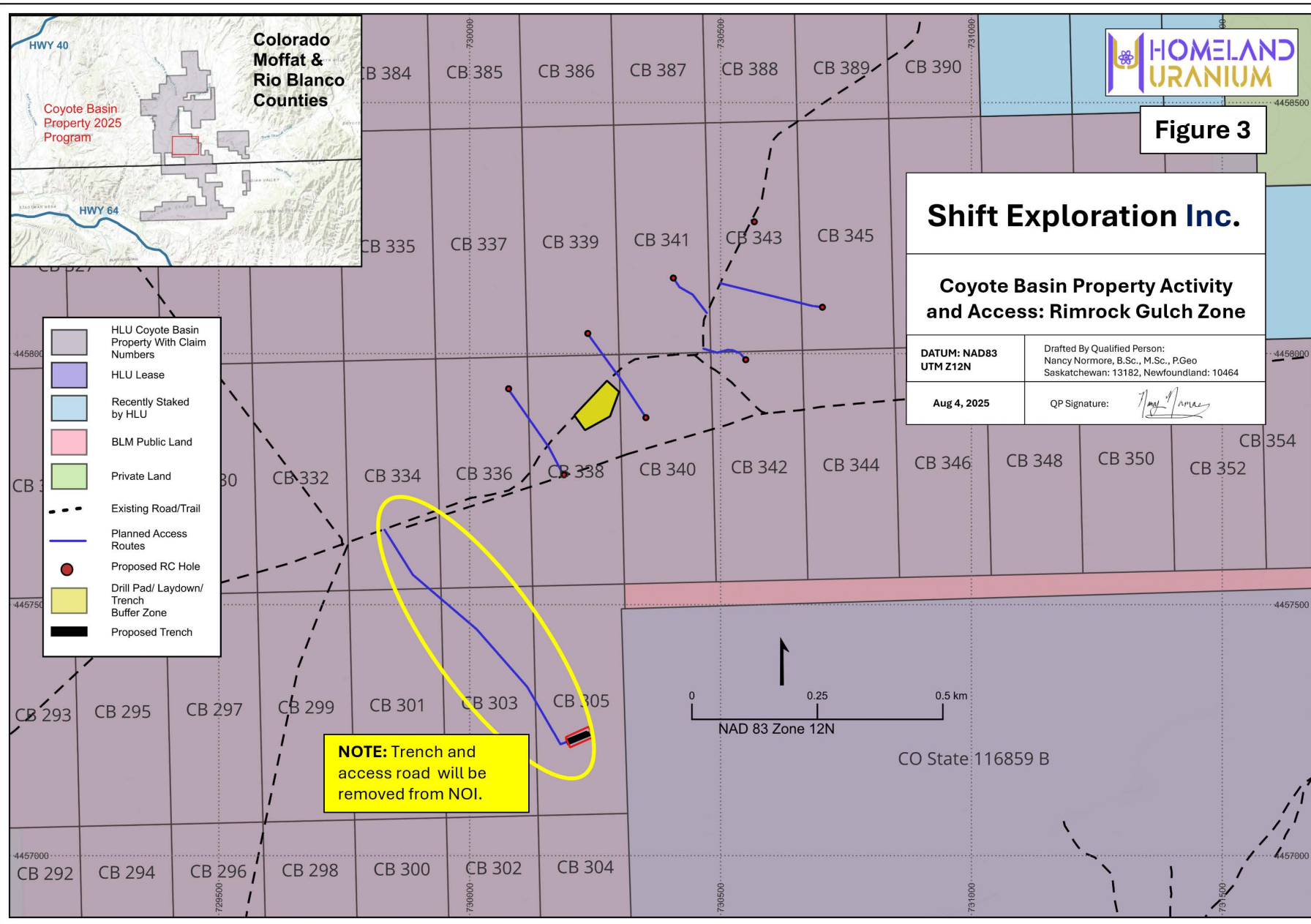
**Coyote Basin
Property**

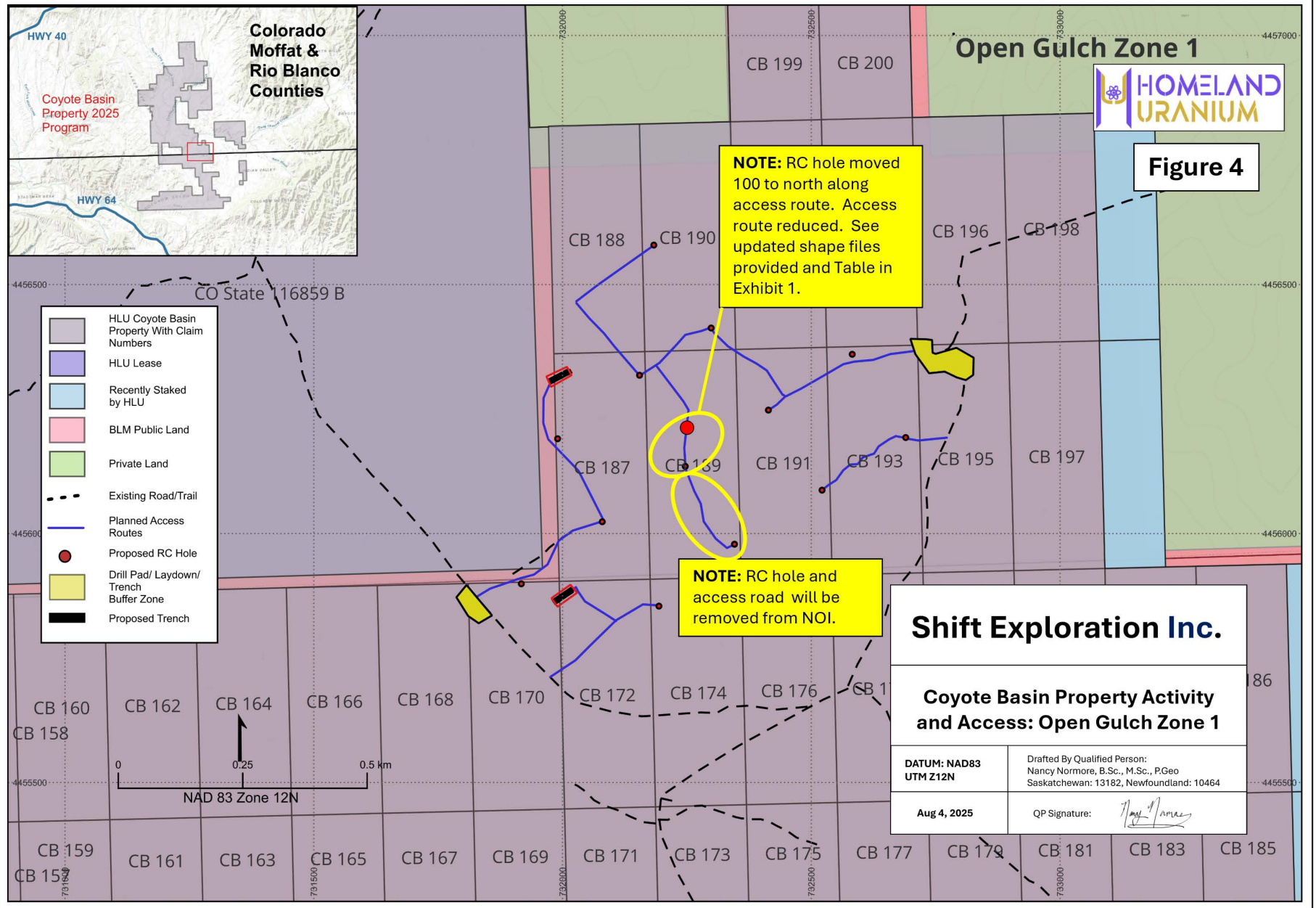
 Homeland Uranium
Coyote Basin Property

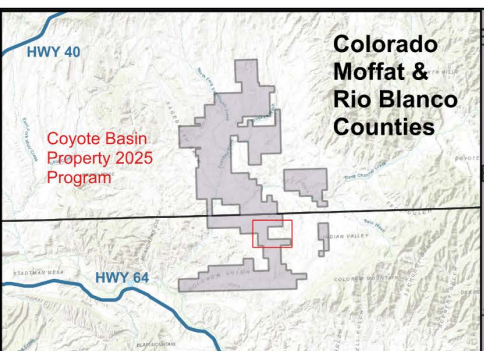
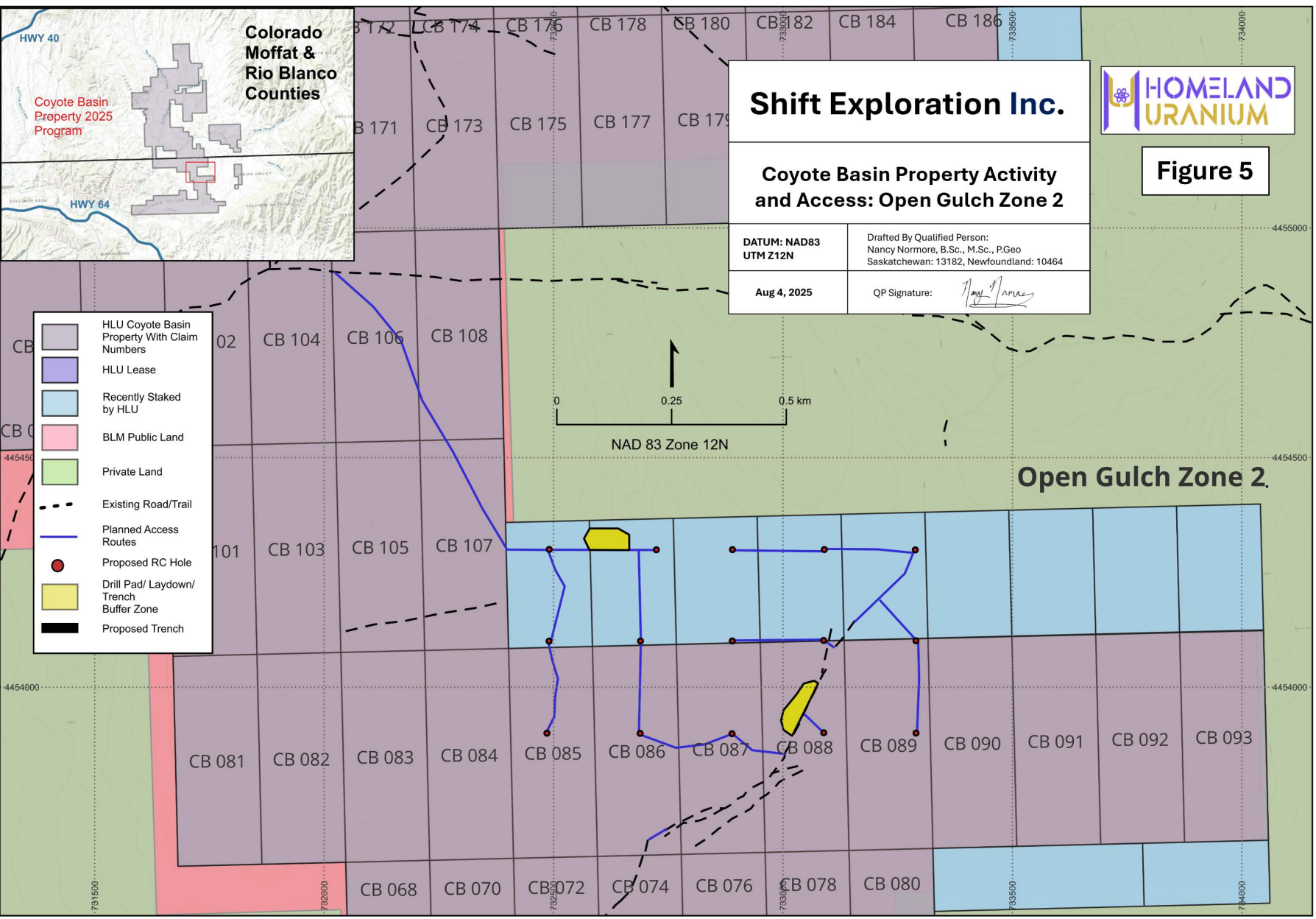












Shift Exploration Inc.

Coyote Basin Property Activity and Access: Open Gulch Zone 2

DATUM: NAD83 UTM Z12N	Drafted By Qualified Person: Nancy Normore, B.Sc., M.Sc., P.Geo Saskatchewan: 13182, Newfoundland: 10464
Aug 4, 2025	QP Signature: <i>Nancy Normore</i>

HOMELAND
URANIUM

Figure 5

- HLU Coyote Basin Property With Claim Numbers
- HLU Lease
- Recently Staked by HLU
- BLM Public Land
- Private Land
- Existing Road/Trail
- Planned Access Routes
- Proposed RC Hole
- Drill Pad/ Laydown/ Trench Buffer Zone
- Proposed Trench

0 0.25 0.5 km
NAD 83 Zone 12N

Open Gulch Zone 2.

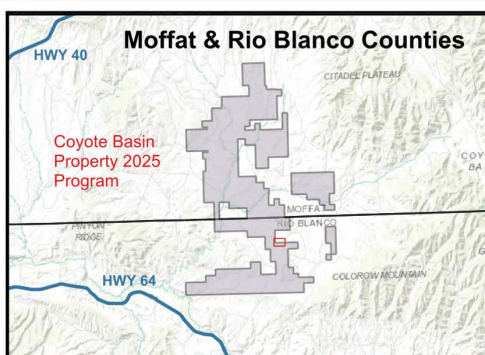


Figure 6

Shift Exploration Inc.

Coyote Basin Property Activity and Access with Satellite Image Background: Open Gulch Zone 2

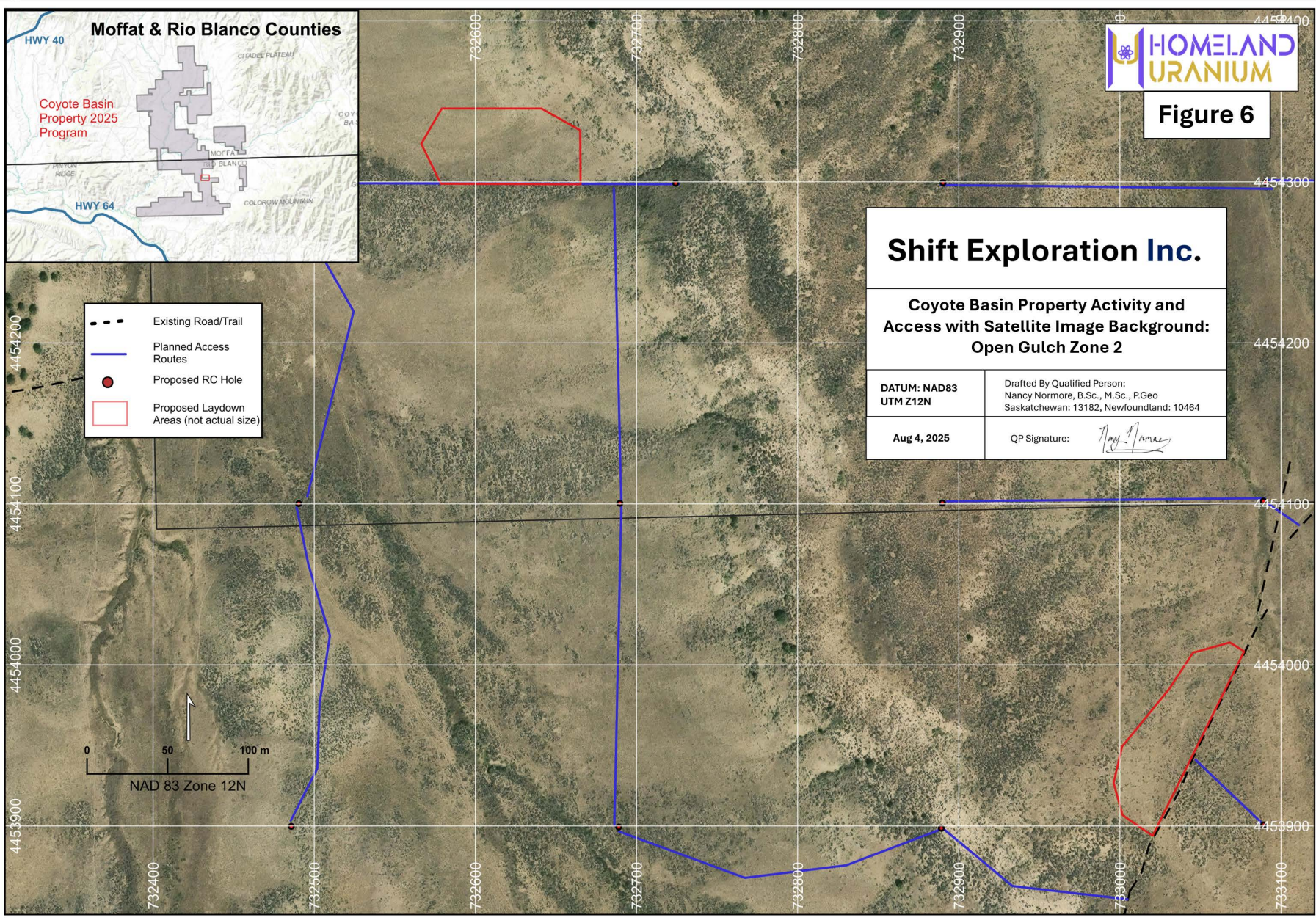
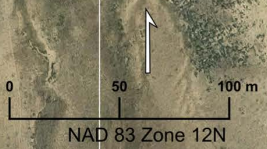
DATUM: NAD83
UTM Z12N

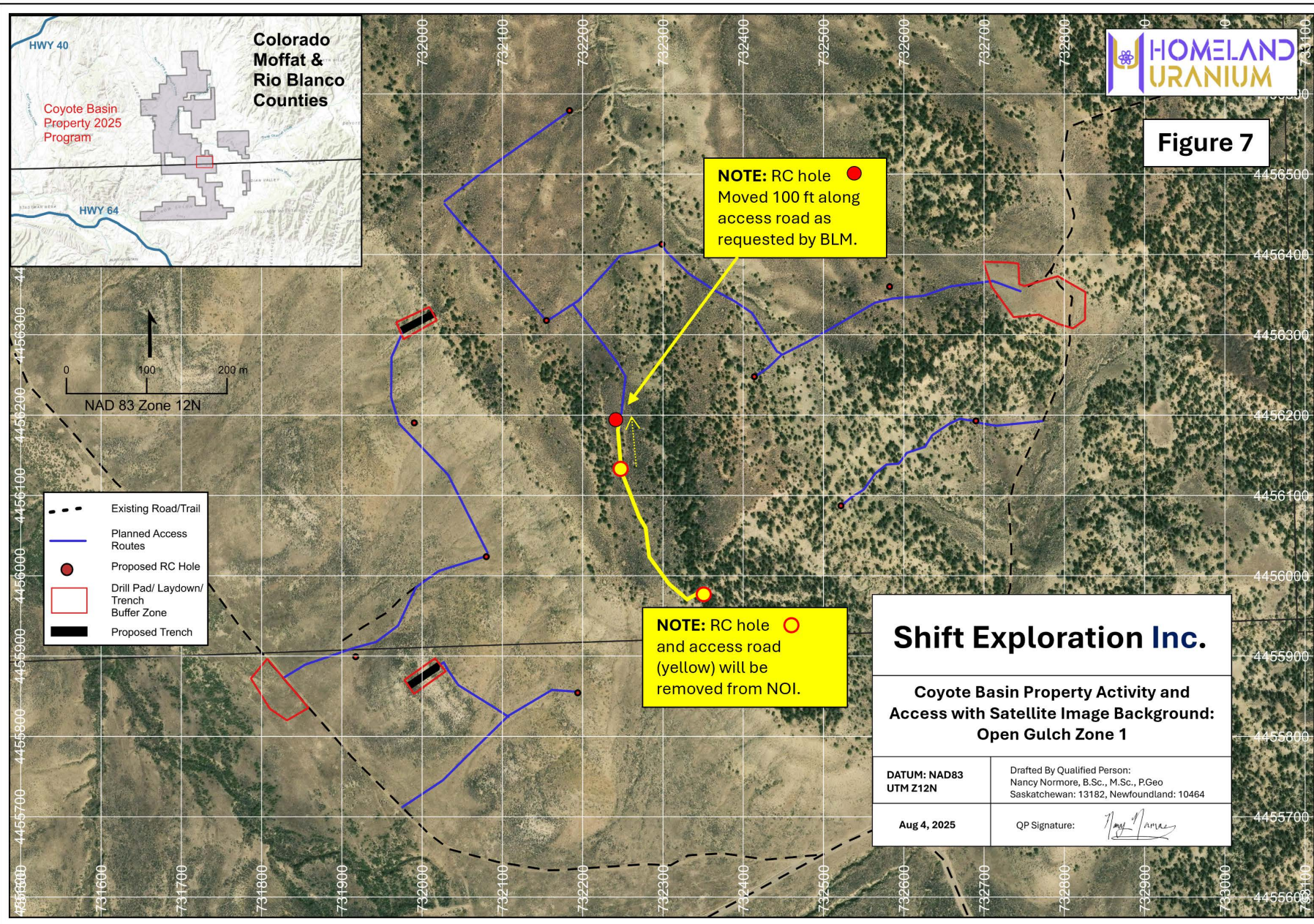
Drafted By Qualified Person:
Nancy Normore, B.Sc., M.Sc., P.Geo
Saskatchewan: 13182, Newfoundland: 10464

Aug 4, 2025

QP Signature:

- Existing Road/Trail
- Planned Access Routes
- Proposed RC Hole
- Proposed Laydown Areas (not actual size)





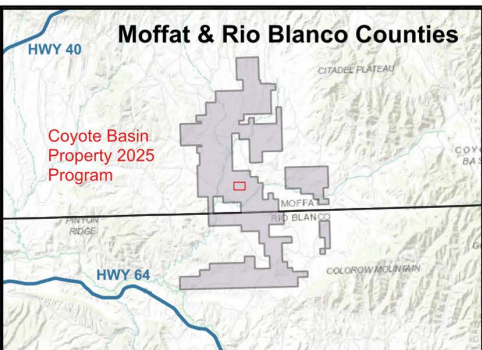
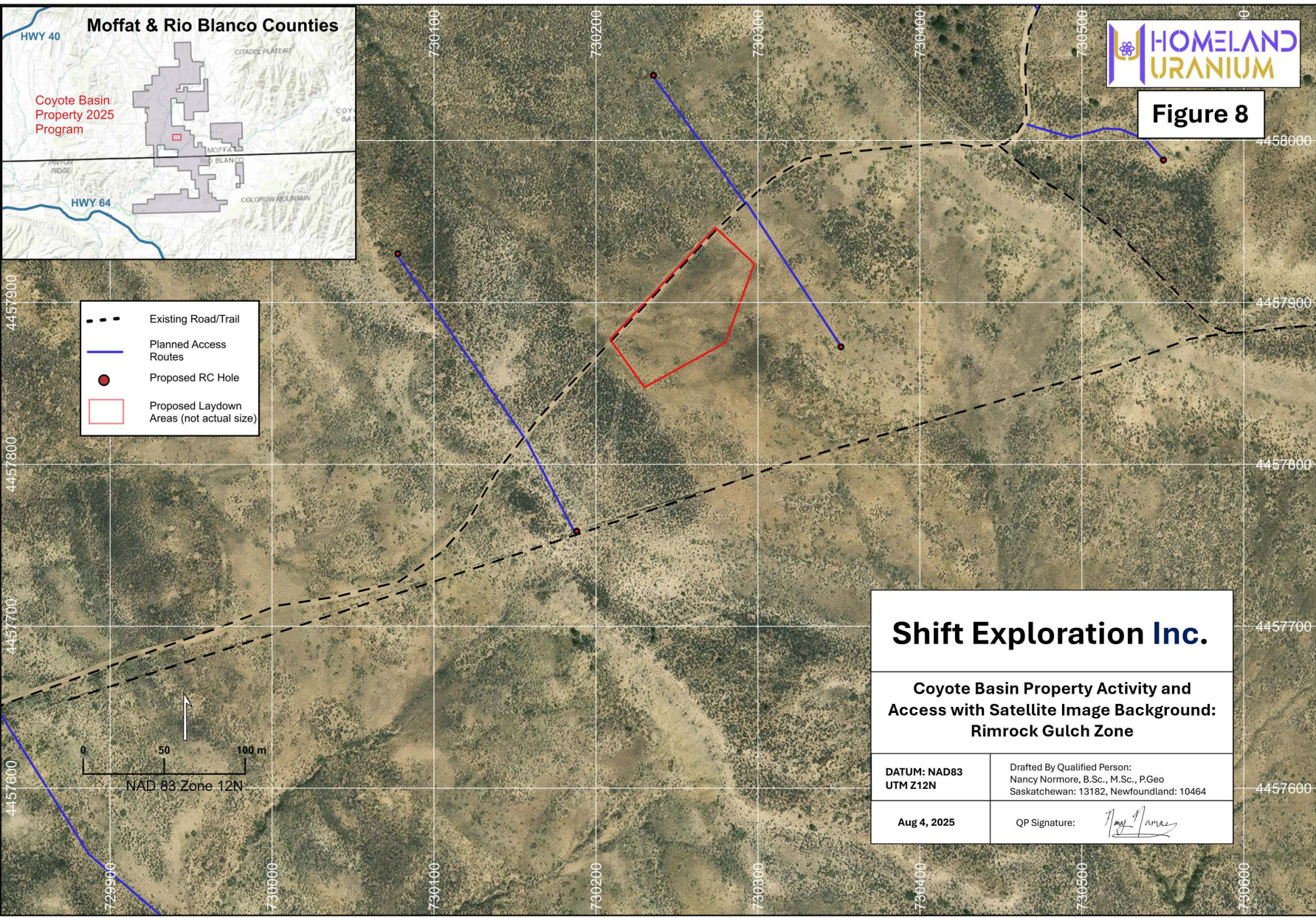
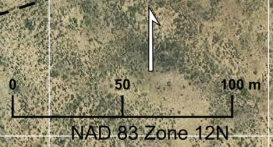


Figure 8



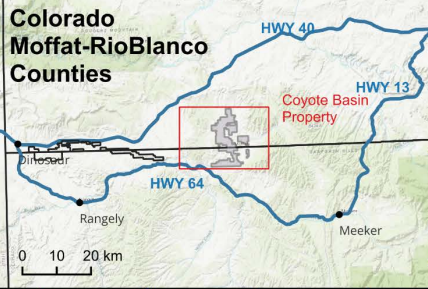
- Existing Road/Trail
- Planned Access Routes
- Proposed RC Hole
- Proposed Laydown Areas (not actual size)



Shift Exploration Inc.

Coyote Basin Property Activity and Access with Satellite Image Background: Rimrock Gulch Zone

DATUM: NAD83 UTM Z12N	Drafted By Qualified Person: Nancy Normore, B.Sc., M.Sc., PGeo Saskatchewan: 13182, Newfoundland: 10464
Aug 4, 2025	QP Signature:



Homeland Uranium Coyote Basin Township, Range and Section



Figure 9

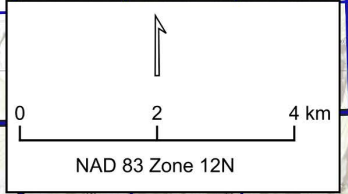
Coyote Basin Property

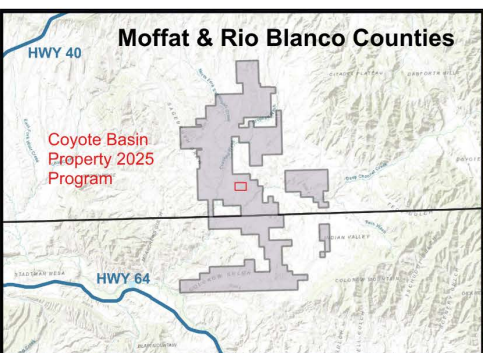
- Homeland Uranium Coyote Basin Property
- 2025 Affected Area
- 3N 97W** PLSS Township & Range
- 16** PLSS Section

Shift Exploration Inc.

Coyote Basin Property Location with Township, Range and Section

DATUM: NAD83 UTM Z12N	Drafted By Qualified Person: Nancy Normore, B.Sc., M.Sc., P.Geo Saskatchewan: 13182, Newfoundland: 10464
Aug 4, 2025	QP Signature:





Shift Exploration Inc.

Coyote Basin Property: Drillpad and laydown Buffer Area, Rimrock Gulch Zone

DATUM: NAD83 UTM Z12N	Drafted By Qualified Person: Nancy Normore, B.Sc., M.Sc., P.Geo Saskatchewan: 13182, Newfoundland: 10464
Aug 4, 2025	QP Signature:



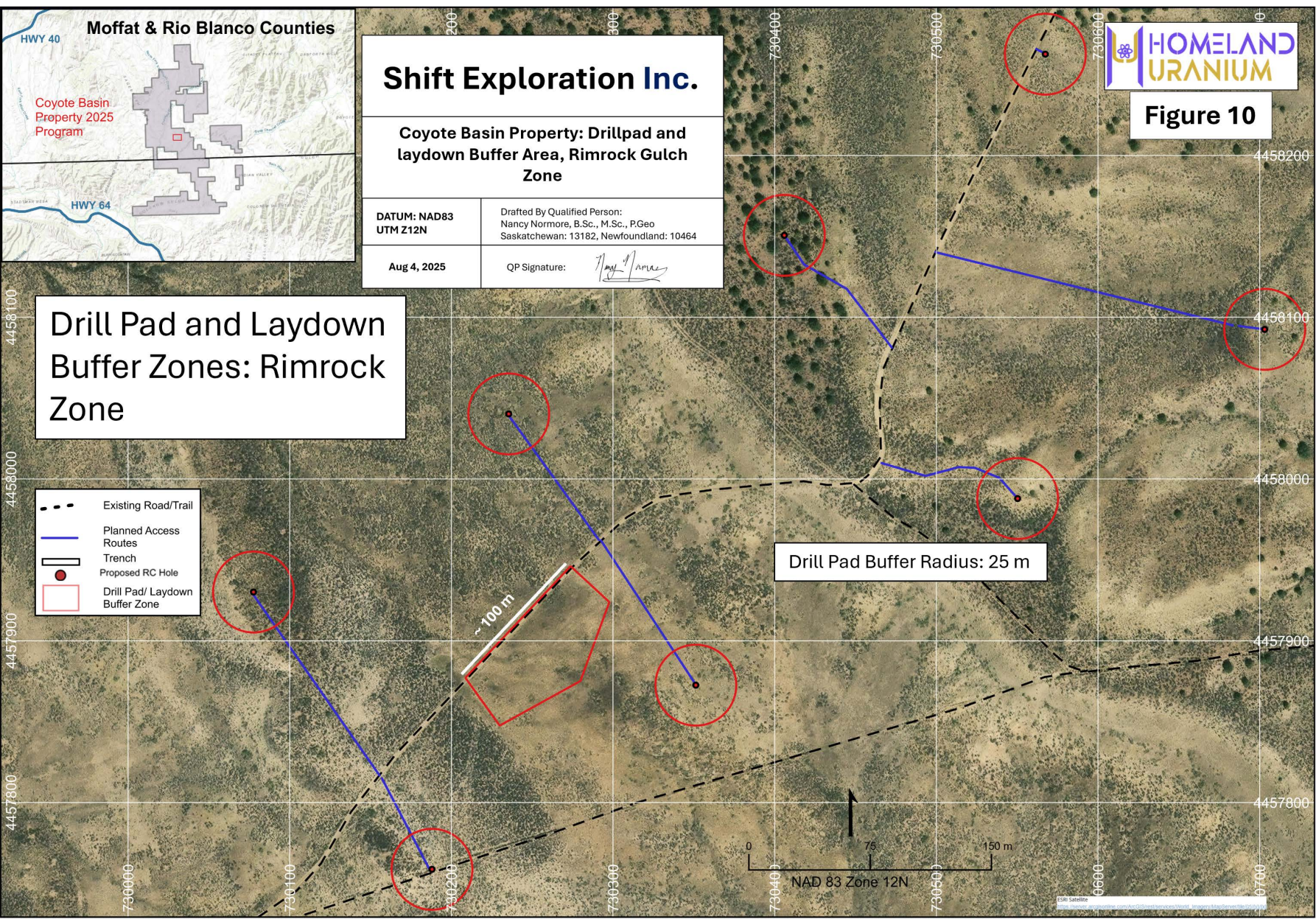
Figure 10

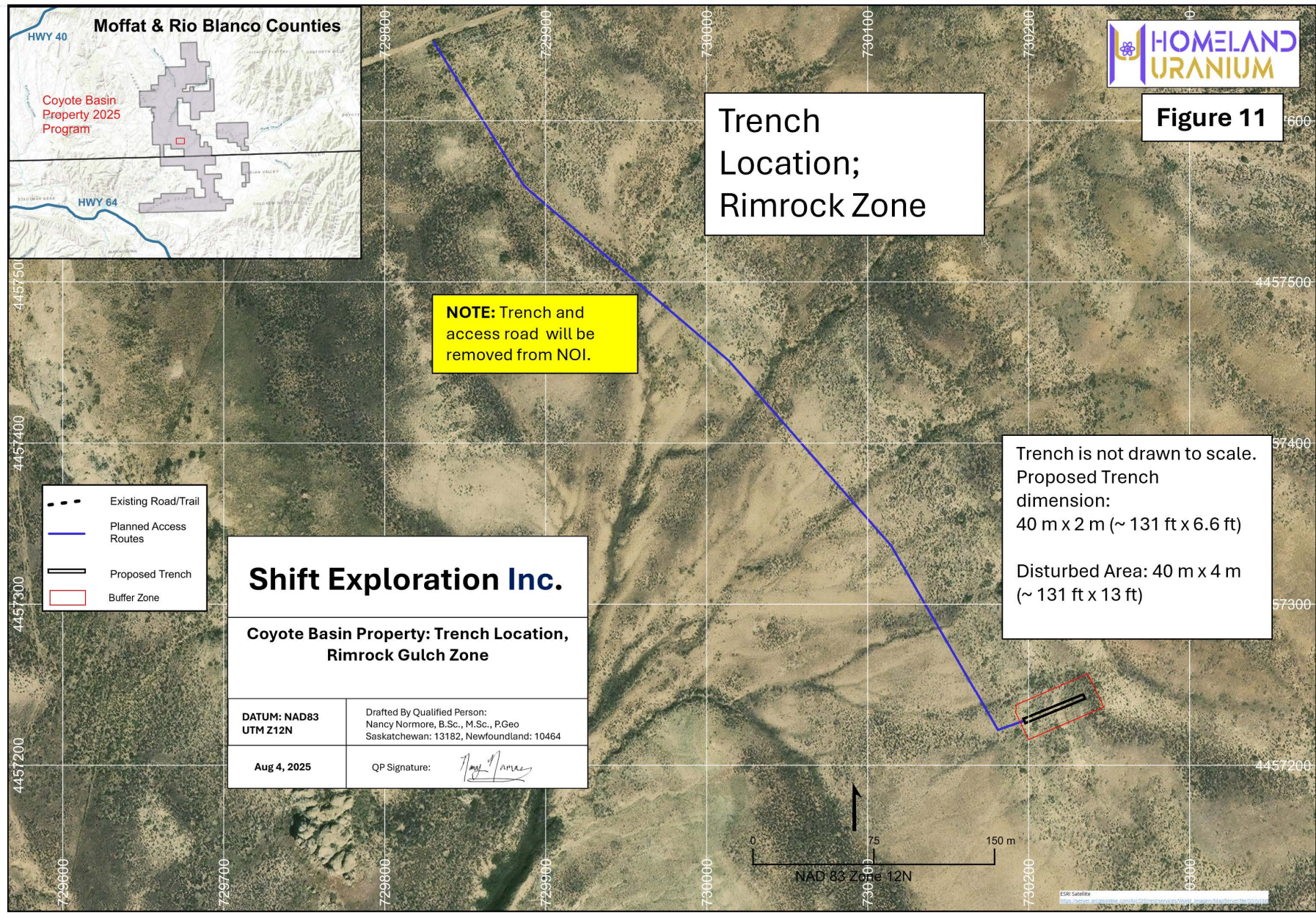
Drill Pad and Laydown Buffer Zones: Rimrock Zone

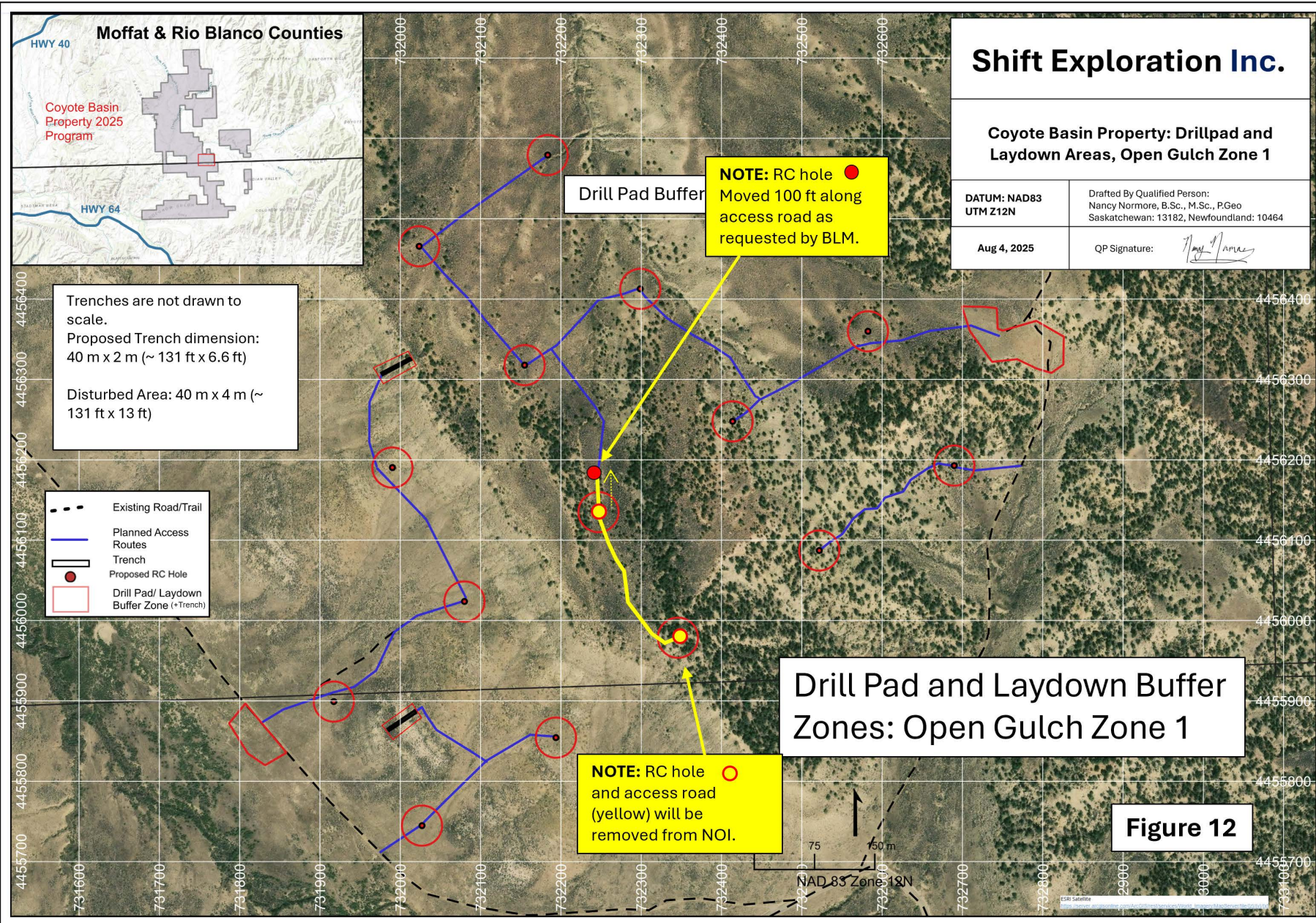
- Existing Road/Trail
- Planned Access Routes
- ▬ Trench
- Proposed RC Hole
- Drill Pad/ Laydown Buffer Zone

Drill Pad Buffer Radius: 25 m

~100 m







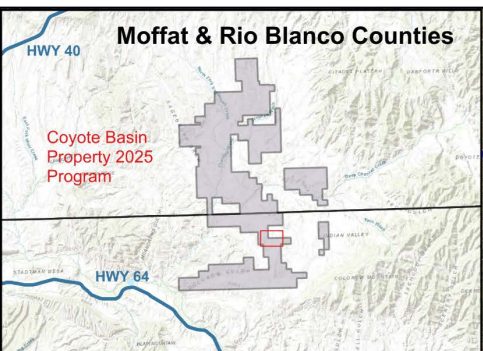


Figure 13

Drill Pad and Laydown Buffer Zones: Open Gulch Zone 2

- Existing Road/Trail
- Planned Access Routes
- Trench
- Proposed RC Hole
- Drill Pad/ Laydown Buffer Zone

Drill Pad Buffer Radius: 25 m



Shift Exploration Inc.

Coyote Basin Property: Drillpad and Laydown Areas, Open Gulch Zone 2

DATUM: NAD83 UTM Z12N	Drafted By Qualified Person: Nancy Normore, B.Sc., M.Sc., P.Geo Saskatchewan: 13182, Newfoundland: 10464
Aug 4, 2025	QP Signature:

