



STATE OF
COLORADO

Simmons - DNR, Leigh <leigh.simmons@state.co.us>

C1980007, West Elk Mine, July Inspection Report

Simmons - DNR, Leigh <leigh.simmons@state.co.us>
To: "Munz, Robert" <RobertMunz@coreresources.com>

Thu, Jul 31, 2025 at 6:34 PM

Bob,

The inspection report is attached, hopefully the documentation of the vegetation on the sample of pads I looked at helps inform MCC/PestAway plans for weed spraying.

Leigh Simmons
Environmental Protection Specialist



COLORADO
Division of Reclamation,
Mining and Safety
Department of Natural Resources

P [720.220.1180](tel:720.220.1180)

Physical address: 1313 Sherman Street, Room 215, Denver, CO 80203

Mailing address: Colorado Division of Reclamation, Mining and Safety, Room 215, 1001 E 62nd Avenue, Denver, CO 80216
leigh.simmons@state.co.us | <https://drms.colorado.gov>




INSP-REPORTC_C1980007_LDS_07302025041743.pdf
15362K



PERMIT INFORMATION

Permit Number: C-1980-007 Mine Name: West Elk Mine Operator: Mountain Coal Company, LLC Operator Address: Robert Munz 5174 Highway 133 Somerset, CO 81434	County: Delta, Gunnison Operation Type: Underground Permit Status: Active Ownership: Private
	Operator Representative Present: Bob Munz
Operator Representative Signature: (Field Issuance Only) 	

INSPECTION INFORMATION

Inspection Start Date: July 24, 2025 Inspection Start Time: 09:00 Inspection End Date: Inspection End Time:	Inspection Type: Coal Partial Inspection Inspection Reason: Normal I&E Program Weather: Clear
Joint Inspection Agency: None	Joint Inspection Contacts:
Post Inspection Agency: None	Post Inspection Contacts:
Inspector(s): Leigh Simmons	Inspector's Signature:  Signature Date: July 30, 2025

Inspection Topic Summary

NOTE: Y=Inspected N=Not Inspected R=Comments Noted V=Violation Issued NA=Not Applicable

R - Air Resource Protection**N** - Roads**N** - Availability of Records**N** - Reclamation Success**N** - Backfill & Grading**R** - Revegetation**N** - Excess Spoil and Dev. Waste**N** - Subsidence**N** - Explosives**N** - Slides and Other Damage**N** - Fish & Wildlife**R** - Support Facilities On-site**R** - Hydrologic Balance**N** - Signs and Markers**R** - Gen. Compliance With Mine Plan**N** - Support Facilities Not On-site**N** - Other**N** - Special Categories Of Mining**R** - Processing Waste**N** - Topsoil**COMMENTS**

This was a partial inspection by Leigh Simmons of the Division of Reclamation, Mining and Safety (Division). The weather was clear and dry, with smoke in the air from wildfires to the west. The mine was active.

AIR RESOURCE PROTECTION – Rule 4.17:

Personnel from Environmental Commodities Corporation (ECC) were on-site, to verify the function of the flare and check records.

HYDROLOGIC BALANCE - Rule 4.05

Drainage Control 4.05.1, 4.05.2, 4.05.3; Siltation Structures 4.05.5, 4.05.6; Discharge Structures 4.05.7, 4.05.10; Diversions 4.05.4; Effluent Limits 4.05.2; Ground Water Monitoring 4.05.13; Surface Water Monitoring 4.05.13; Drainage – Acid and Toxic Materials 4.05.8; Impoundments 4.05.6, 4.05.9; Stream Buffer Zones 4.05.18:

Mr. Munz reported that MCC had noticed damage to the liner of the SG-1 pond during a routine inspection and had plans to repair it. The Division anticipates a letter giving details of the plans. At the time of the inspection the pond was not holding any water, but there was some dried mud at the bottom of the pond.

GENERAL MINE PLAN COMPLIANCE:

Longwall mining of the LWB26 panel was in progress, at cross-cut 59 on the head gate. A single development crew was working in the B27 head gate at around cross-cut 42. Remaining contractors with Phoenix Mining had been extended to early August.

PROCESSING WASTE/COAL MINE WASTE PILES – Rule 4.10 and 4.11

Drainage Control; Surface Stabilization; Placement:

Processing waste was being generated and transported to the RPEE at the time of the inspection.

REVEGETATION – Rule 4.15

Vegetative Cover; Timing:

A sample of reclaimed MVB pads and roads were inspected (details given below). In general these areas were well vegetated, with a diverse mix of forbs, perennial grasses and volunteer shrubs. Noxious weeds were

Number of Partial Inspection this Fiscal Year: 1

Number of Complete Inspections this Fiscal Year: 0

evident throughout, however no severe infestations were observed, and ongoing weed treatment appears to be effective; site-specific recommendations are given below. Of particular note is the road to the sunset trails area (which has been reclaimed, but has not yet been through any bond release) where the north end of the reclaimed segment is very sparsely vegetated, which is giving an opportunity to thistle and houndstongue to become established. The Division strongly recommends prioritizing treatment of the weeds as soon as possible, and supplemental seeding this fall.

SUPPORT FACILITIES - Rule 4.04:

The table below summarizes the pads and roads that were inspected:

Label	Comments
E1-26.5	Stable, well vegetated. Grass dominant, with varied forbs, and shrubs on N side. Recommend treating several patches of thistle (Canada?) next season – maybe too late this year
E1-30	Looks like some musk thistle and hounds tongue has been sprayed earlier in year
E1-34	Pad has lots of good vegetation, but also houndstongue, musk, Canada - recommend regular treatment before bond release
E1-38	Fenced. Scotch thistle and Canada thistle
E1-41.5	Scotch thistle on N side, musk and Canada on S side, otherwise great diversity
E2-38	Looks good. Just a little Canada thistle - low priority
E2-42	Looks like houndstongue has been sprayed
E1-45	Just a little Canada thistle on NE side
E2-44.5 & -47.5	Some big thistles on S side of pad. Has been sprayed but will need continued follow up
E2-51, 52, 54	Fine
E3-51	Fine
09WE4X53	Fine
Road damage	Road has not been repaired, but creek would be passable upstream in high clearance vehicle
E6-4(61)	Fine
SS1-2	
SS1-1	
Old exploration road	Thistle and houndstongue at junction
Road to sunset trails	Mostly ok, but beginning of road is very sparsely vegetated, with many thistle rosettes and houndstongue. Recommend treatment and supplemental seeding asap

Number of Partial Inspection this Fiscal Year: 1

Number of Complete Inspections this Fiscal Year: 0

DOCUMENTS RECEIVED

N/A

OTHER (SPECIFY)

N/A

ENFORCEMENT ACTIONS/COMPLIANCE

No enforcement actions were initiated as a result of this inspection, nor are any pending.

Number of Partial Inspection this Fiscal Year: 1

Number of Complete Inspections this Fiscal Year: 0

MAPS & PHOTOGRAPHS

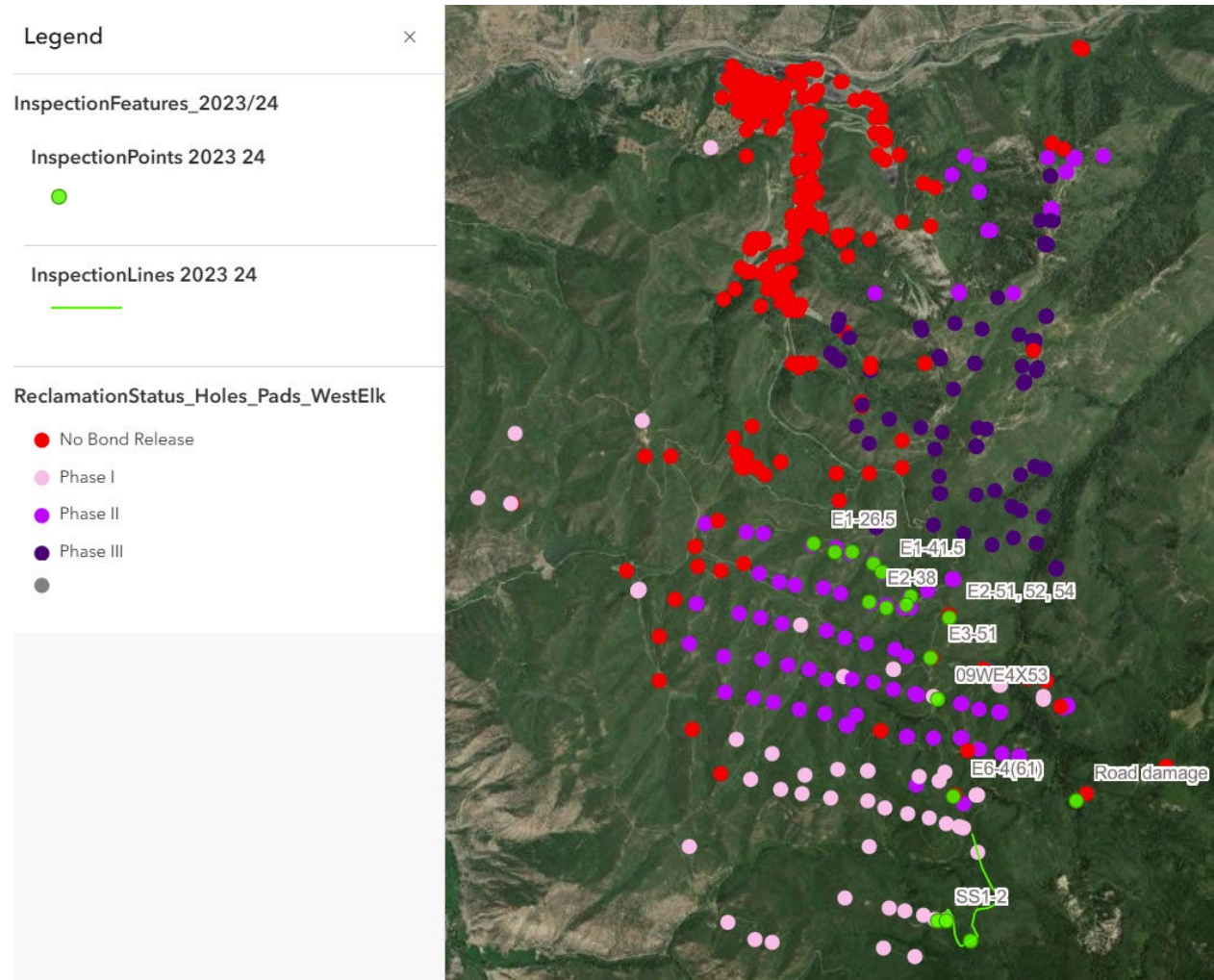


Figure 1: Screenshot of inspection map, showing all pads

Number of Partial Inspection this Fiscal Year: 1
Number of Complete Inspections this Fiscal Year: 0

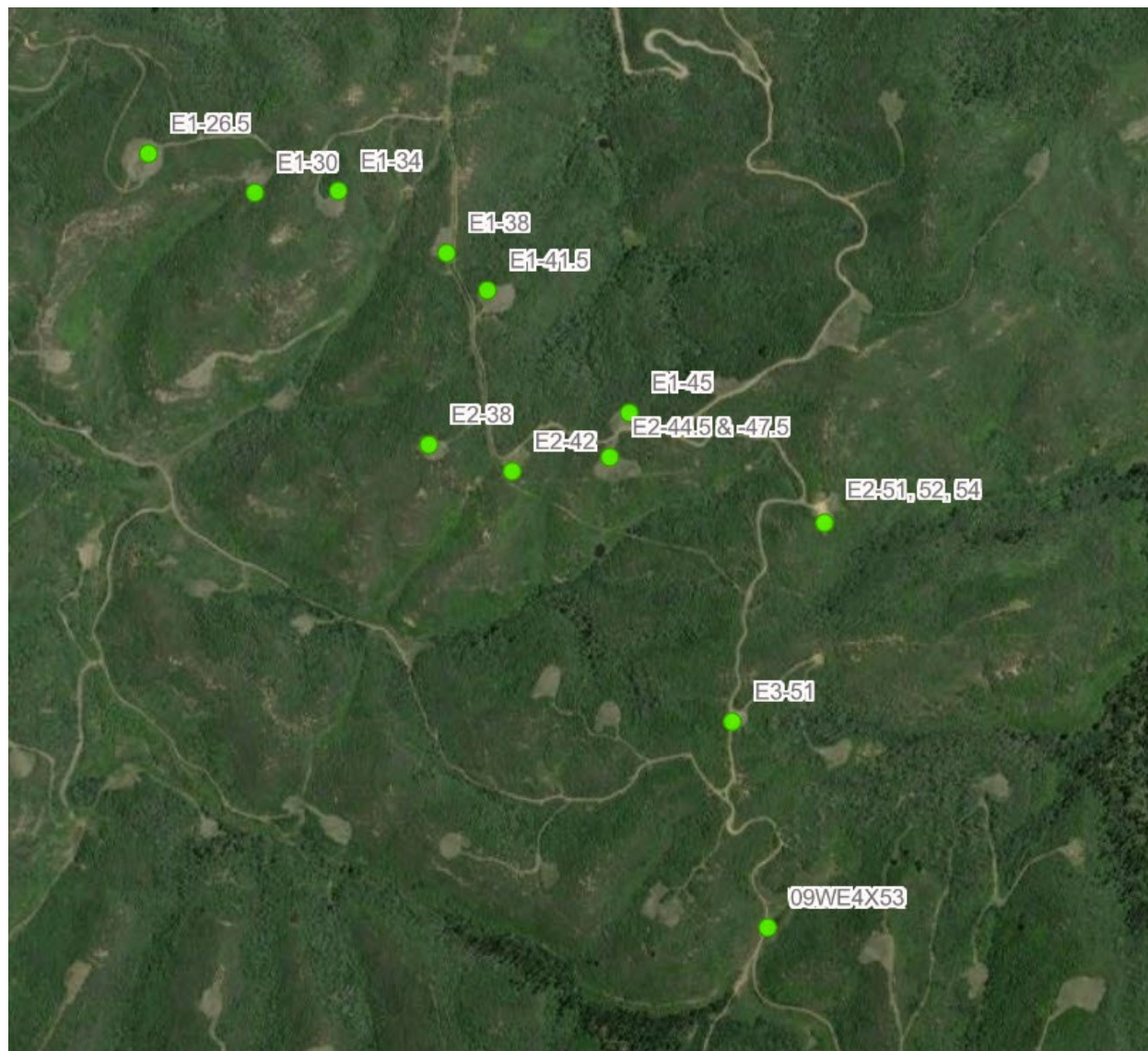


Figure 2: Screenshot of inspection map (N), showing only pads and roads that were inspected

Number of Partial Inspection this Fiscal Year: 1

Number of Complete Inspections this Fiscal Year: 0

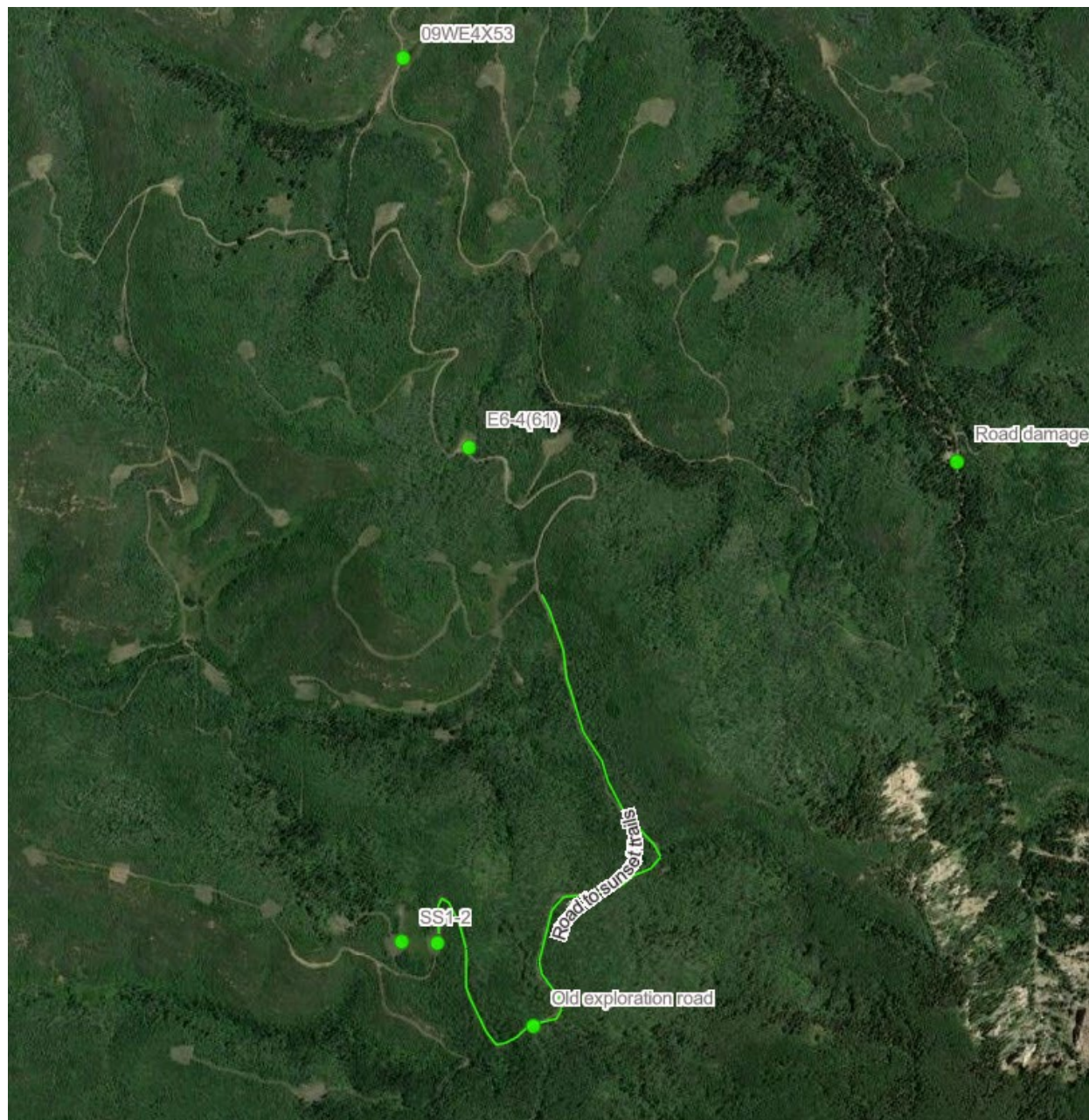


Figure 3: Screenshot of inspection map (S), showing only pads and roads that were inspected

Number of Partial Inspection this Fiscal Year: 1

Number of Complete Inspections this Fiscal Year: 0



Figure 4: E1-26.5

Number of Partial Inspection this Fiscal Year: 1

Number of Complete Inspections this Fiscal Year: 0



Figure 5: E1-30

Number of Partial Inspection this Fiscal Year: 1

Number of Complete Inspections this Fiscal Year: 0



Figure 6: More photos of E1-30

Number of Partial Inspection this Fiscal Year: 1

Number of Complete Inspections this Fiscal Year: 0



Figure 7: E1-34

Number of Partial Inspection this Fiscal Year: 1

Number of Complete Inspections this Fiscal Year: 0



Figure 8: Musk thistle on E1-34



Figure 9: Canada thistle on E1-38

Number of Partial Inspection this Fiscal Year: 1

Number of Complete Inspections this Fiscal Year: 0



Figure 10: Scotch thistle on E1-38

Number of Partial Inspection this Fiscal Year: 1

Number of Complete Inspections this Fiscal Year: 0



Figure 11: More Canada thistle on E1-38

Number of Partial Inspection this Fiscal Year: 1

Number of Complete Inspections this Fiscal Year: 0

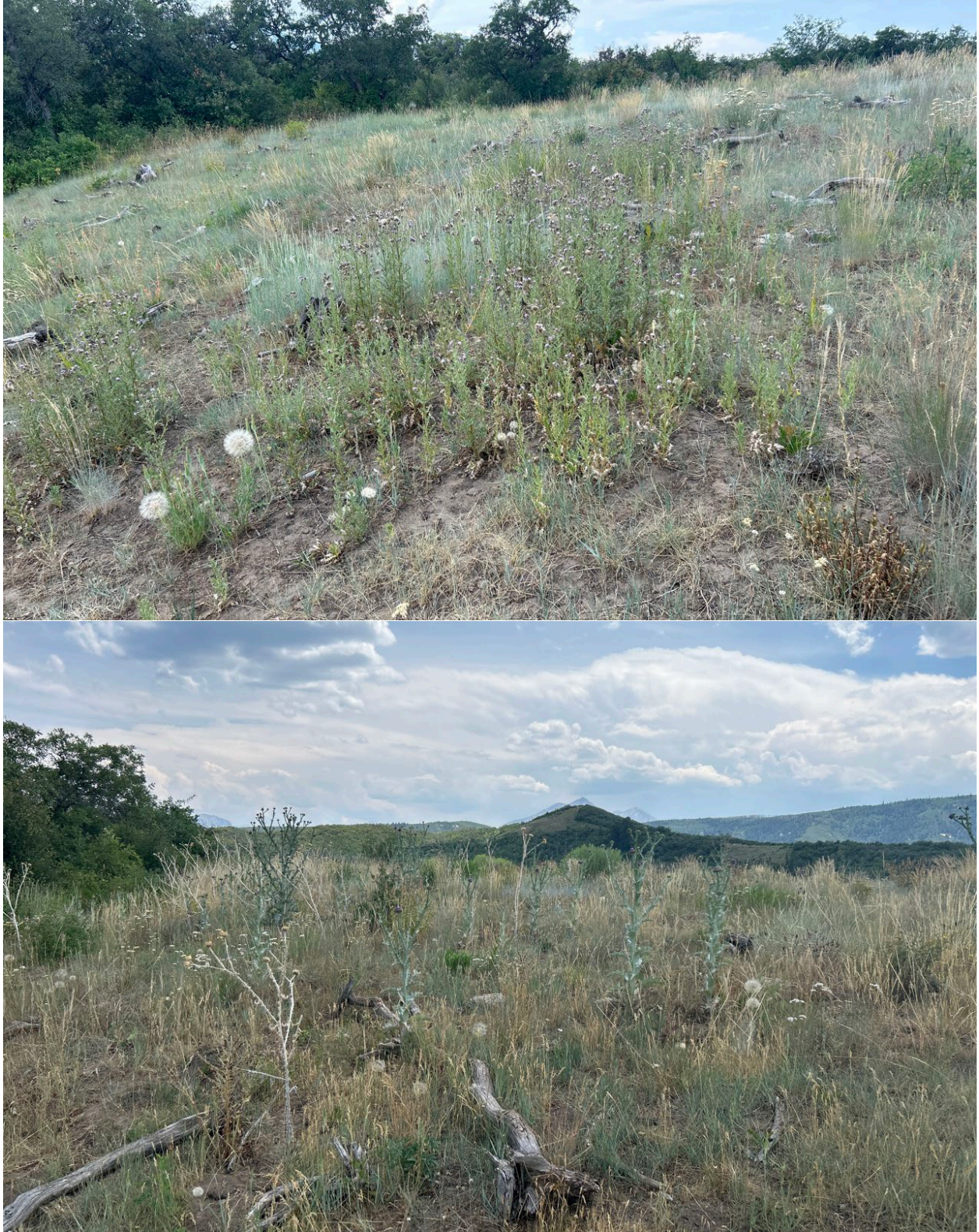


Figure 12: E1-41.5

Number of Partial Inspection this Fiscal Year: 1

Number of Complete Inspections this Fiscal Year: 0

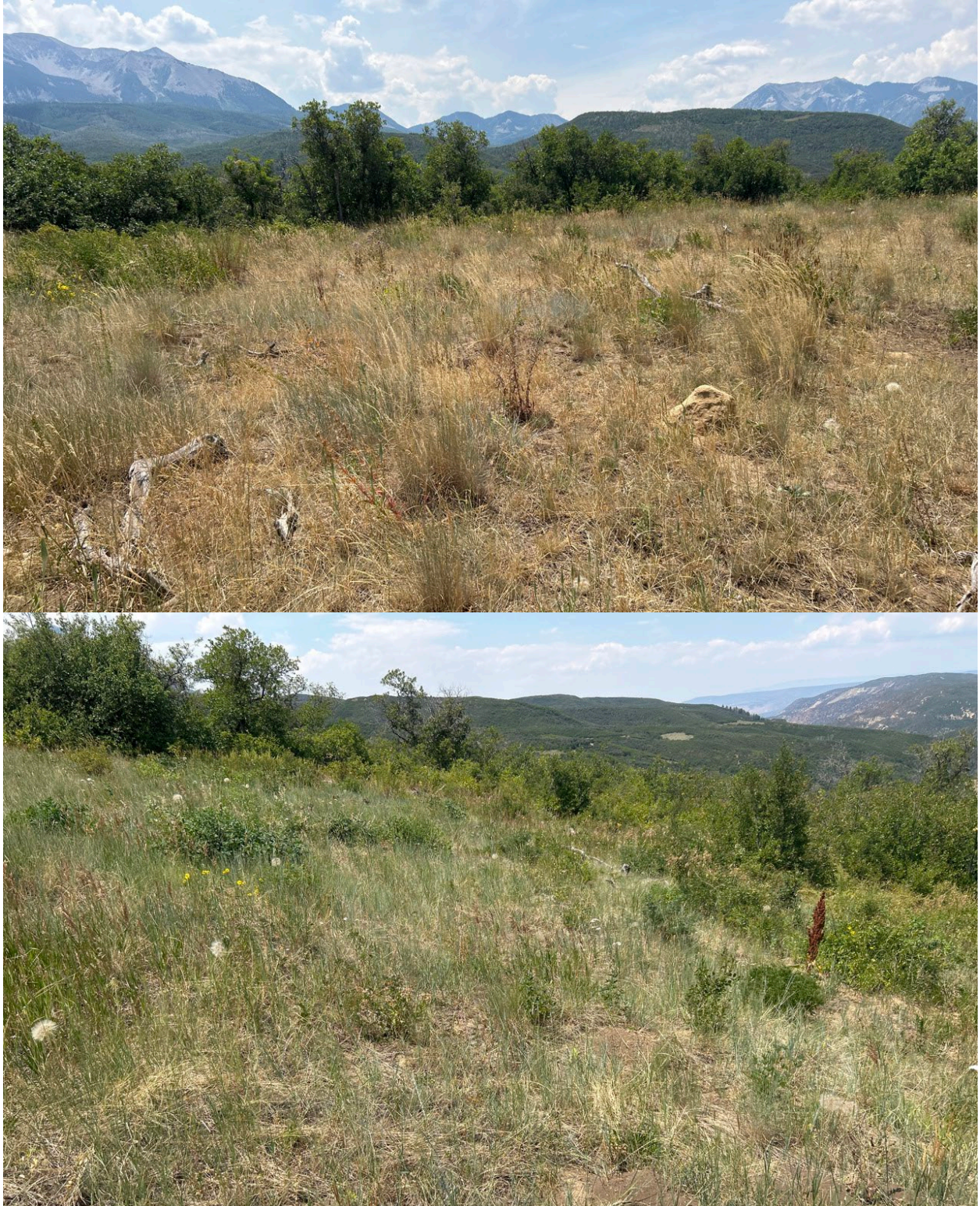


Figure 13: E2-38

Number of Partial Inspection this Fiscal Year: 1

Number of Complete Inspections this Fiscal Year: 0



Figure 14: Sprayed weeds on E2-42



Figure 15: E1-45

Number of Partial Inspection this Fiscal Year: 1

Number of Complete Inspections this Fiscal Year: 0



Figure 16: E2-44.5 & -47.5

Number of Partial Inspection this Fiscal Year: 1

Number of Complete Inspections this Fiscal Year: 0



Figure 17: Another photo of E2-44.5 & -47.5

Number of Partial Inspection this Fiscal Year: 1

Number of Complete Inspections this Fiscal Year: 0



Figure 18: Previously treated thistle on E2-44.5 & -47.5

Number of Partial Inspection this Fiscal Year: 1

Number of Complete Inspections this Fiscal Year: 0



Figure 19: E2-51, -52, -54 (not reclaimed)



Figure 20: E3-51

Number of Partial Inspection this Fiscal Year: 1

Number of Complete Inspections this Fiscal Year: 0



Figure 21: 09WE4X53



Figure 22: Deep Creek crossing

Number of Partial Inspection this Fiscal Year: 1

Number of Complete Inspections this Fiscal Year: 0



Figure 23: More photos of Deep Creek crossing

Number of Partial Inspection this Fiscal Year: 1

Number of Complete Inspections this Fiscal Year: 0



Figure 24: E6-4 (61)



Figure 25: Old Exploration Road

Number of Partial Inspection this Fiscal Year: 1

Number of Complete Inspections this Fiscal Year: 0



Figure 26: N end of Road to Sunset Trails, very sparse vegetation

Number of Partial Inspection this Fiscal Year: 1

Number of Complete Inspections this Fiscal Year: 0



Figure 27: Weeds at N end of Road to Sunset Trails

Number of Partial Inspection this Fiscal Year: 1

Number of Complete Inspections this Fiscal Year: 0



Figure 28: Road to Sunset Trails

Number of Partial Inspection this Fiscal Year: 1

Number of Complete Inspections this Fiscal Year: 0



Figure 29: SS1-1



Figure 30: SS1-2

Number of Partial Inspection this Fiscal Year: 1

Number of Complete Inspections this Fiscal Year: 0

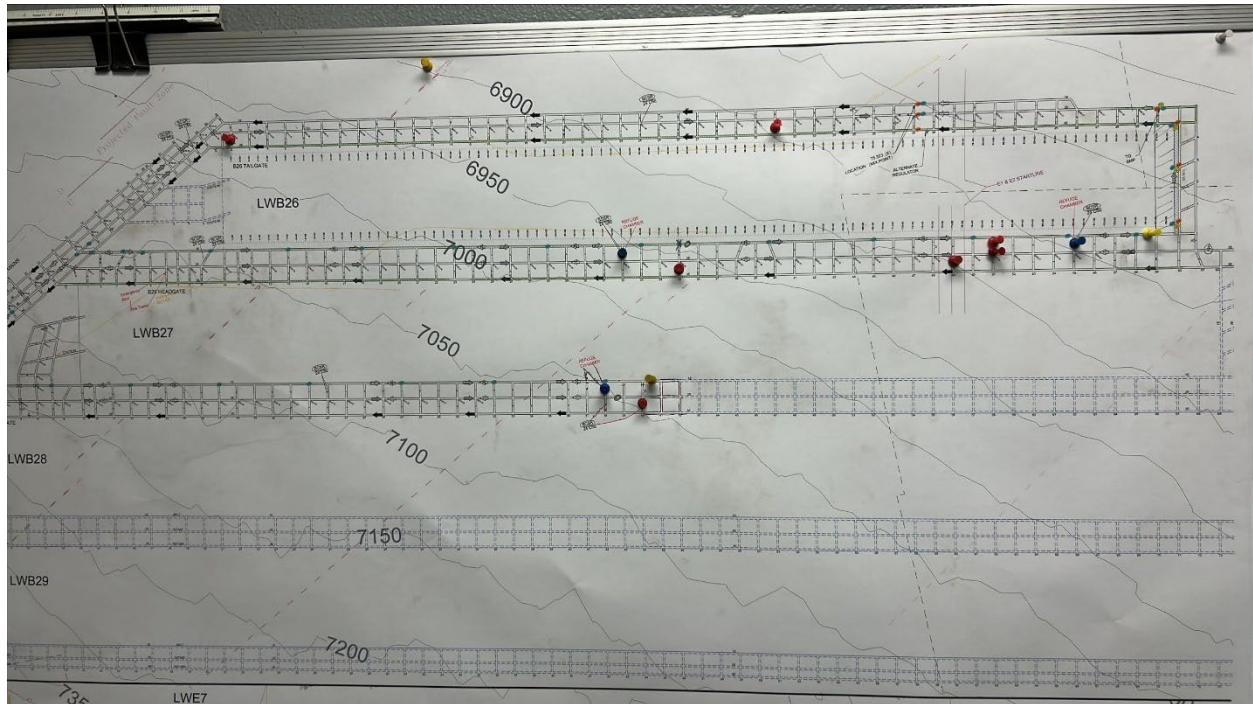


Figure 31: Mine map showing B seam panels

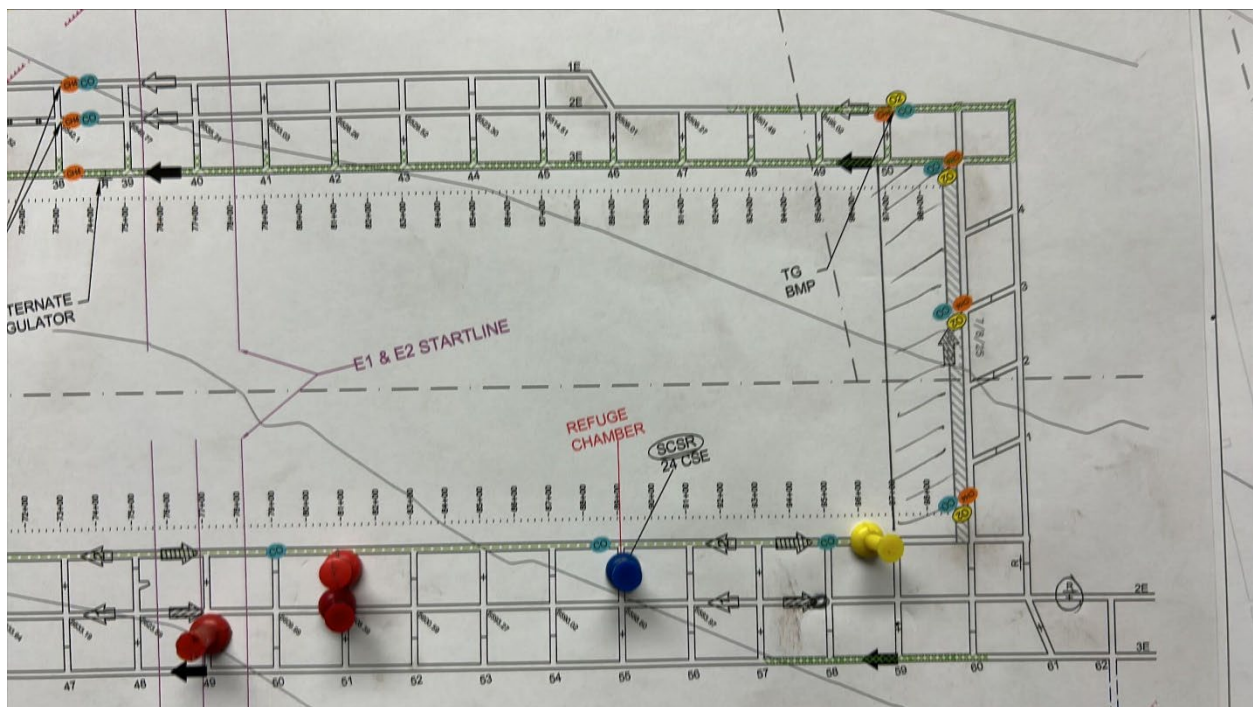


Figure 32: Longwall progress in LWB26 panel

Number of Partial Inspection this Fiscal Year: 1

Number of Complete Inspections this Fiscal Year: 0

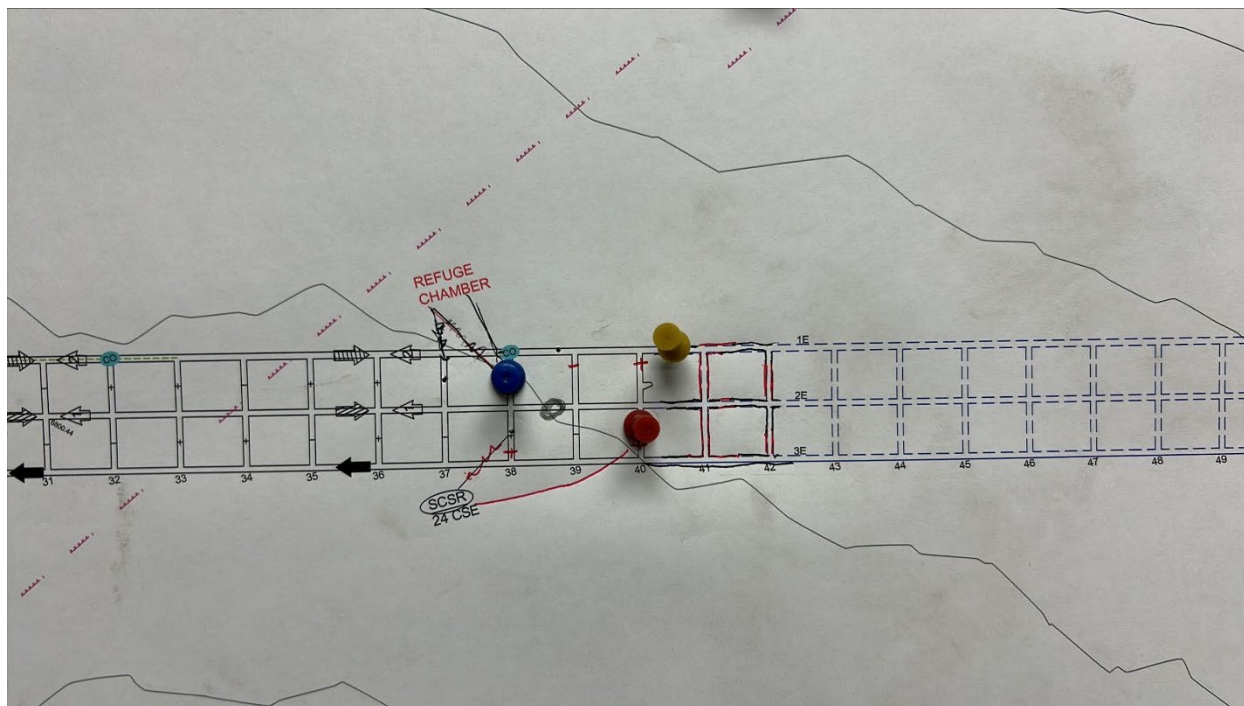


Figure 33: Mine map showing development progress in LWB27 head gate



Figure 34: SG1 pond

Number of Partial Inspection this Fiscal Year: 1

Number of Complete Inspections this Fiscal Year: 0



Figure 35: Damage to SG-1 liner

Number of Partial Inspection this Fiscal Year: 1

Number of Complete Inspections this Fiscal Year: 0