



July 31, 2025

## ELECTRONIC DELIVERY

Mr. Elliott Russell  
 Environmental Protection Specialist  
 Colorado Department of Natural Resources  
 Division of Reclamation, Mining and Safety  
 Office of Mined Land Reclamation  
 1313 Sherman Street, Room 215  
 Denver, Colorado 80203

**Re: Permit No. M-1980-244; Cripple Creek & Victor Gold Mining Company; Cresson Project; Technical Revision 149 – VLF2 Proposed Vibrating Wire Piezometer Installation**

Dear Mr. Russell:

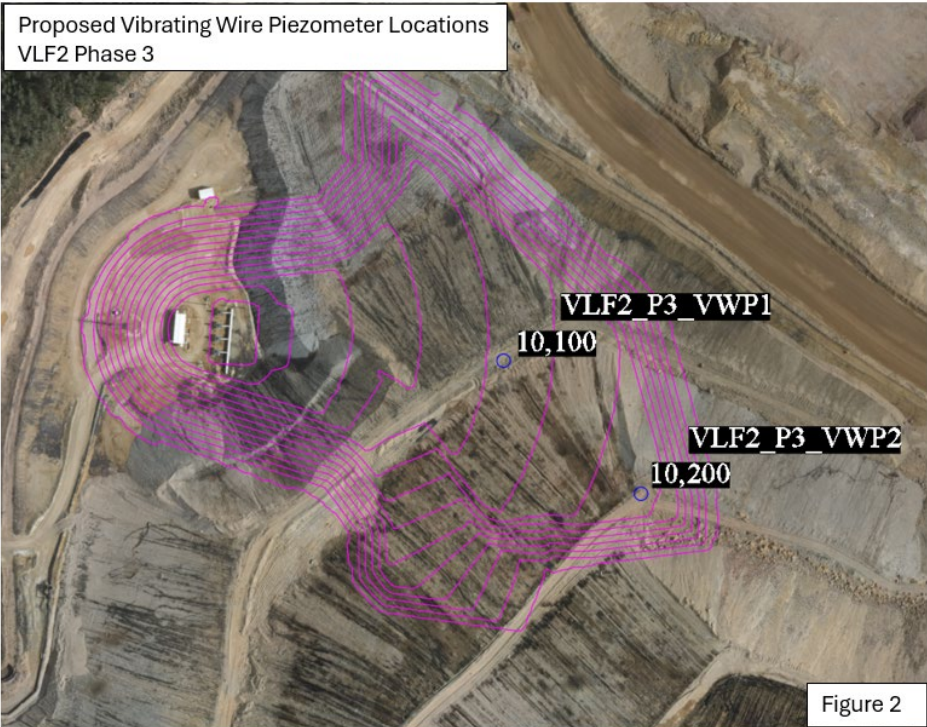
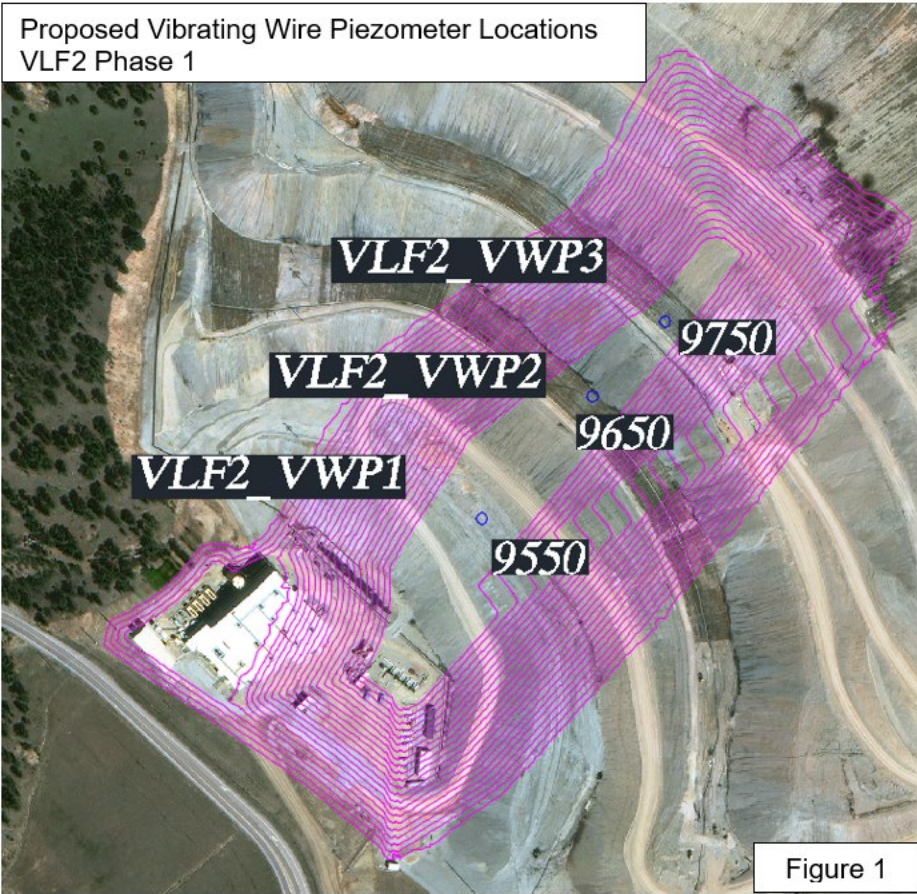
The Cripple Creek and Victor Gold Mining Company (CC&V) hereby provides this Technical Revision (TR) 149 to Permit M-1980-244 as part of the Significant Potential Event corrective actions identified in the third-party contractor investigation report dated June 6, 2025.

CC&V is proposing the installation of Vibrating Wire Piezometers (VWP) that will be installed on VLF2 Phase 1 and Phase 3 as shown in Figures 1 and 2 (see below).

The tables below outline the proposed piezometer site IDs, their respective distance from the pumps, and total well depth.

<b>Piezometer ID VLF2 Phase 1</b>	<b>Distance from pumps ft</b>	<b>Total Well Depth ft</b>	<b>Depth above liner ft</b>
VLF2_VWP1	360	170	30
VLF2_VWP2	715	270	30
VLF2_VWP3	940	370	30

<b>Piezometer ID VLF2 Phase 3</b>	<b>Distance from pumps ft</b>	<b>Total Well Depth ft</b>	<b>Depth above liner ft</b>
VLF2_P3_VWP1	430	110	30
VLF2_P3_VWP2	630	195	30



To ensure no damage to the liner during piezometer installation, the following procedure will be followed.

- **Drill to 200 ft above liner**
  - Conduct a downhole deviation survey.
  - Evaluate results.
- **Drill to 100 ft above liner**
  - Conduct a downhole deviation survey.
  - Evaluate results, terminate drilling if deviation is unacceptable, or continue.
- **Tentatively drill to 60 ft above liner**
  - Conduct downhole deviation survey.
  - Evaluate results, terminate, or proceed.
- **Tentatively drill to 40 ft above liner**
  - Conduct downhole deviation survey.
  - Evaluate results, terminate, or proceed.
- **Tentatively drill to 30 ft above liner**
  - Conduct downhole deviation survey.
  - Terminate drilling.

\*\*The following surveys will follow the same procedure as previously outlined. However, the first survey for each location are as follows:

VLF2\_VWP1 - first survey will occur at 100 ft above liner.

VLF2\_P3\_VWP1 - first survey will occur at 60 ft above the liners

VLF2\_P3\_VWP2 - first survey will occur at 100 ft above liner.

#### **Application of VWPs to calibrate new well level readings at steady-state:**

The additional VWPs installed on VLF2 Phase 1 and Phase 3 will measure the cone of depression at varying pond levels. These readings will support development of an updated pond filling curve by the Engineer of Record, ensuring that it is representative of the actual pond volumes by taking into account the cone of depression. The updated pond filling curve will be incorporated into operation parameters for improved management.

A sonic drill rig will be utilized to drill and set the casing for the VWPs. This type of rig is industry standard for obtaining in-situ dump samples that accurately represent particle size distribution without degrading or pulverizing the material. Samples collected during drilling will be submitted to an independent laboratory for analysis of total porosity and field capacity of the PSSAs. These are the two parameters are required to produce the updated filling curve.

VWP installation, including instrumentation, is targeted for completion by November 30, 2025. Sample collection from the sonic rig will occur during drilling, with laboratory results for porosity and field capacity anticipated by 11/30/2025. This will begin the start of pond level data collection for the piezometers. An estimated 4 months of operational data will be needed to build out a robust estimate of pond volumes. Site will work with the Engineer of Record to develop a new model for pond volume estimation that takes into account the cone of depression based on the additional piezometers. During this period, site will provide DRMS with monthly updates regarding progress. Finalized pond volume calculations to inform new reporting limits are estimated by April 2026.

The technical revision payment fee in the amount of \$1,006 will be made electronically via the DRMS webpage, and confirmation will be submitted to your office via email.

Should you require further information, please do not hesitate to contact Johnna Gonzalez at 719-313-0447 or [Johnna.Gonzalez@ccvmining](mailto:Johnna.Gonzalez@ccvmining), or myself at [Katie.Blake@ccvmining.com](mailto:Katie.Blake@ccvmining.com).

Sincerely,

Signed by:  
p.p.   
F7E306D9B296487...

Katie Blake  
Sustainability & External Relations Manager  
Cripple Creek & Victor Gold Mining Co

Ec: E. Russell - DRMS  
Z. Trujillo - DRMS  
J. McBryde – Teller County  
K. Blake – CC&V  
N. Townley – CC&V  
A. Matarrese – CC&V  
B. Doering– CC&V