

FTK.25.001

N/K

*See notes below		UNFACTORED BASE REACTIONS TO CONSIDER AT TYPICAL BASES			
Load Case		Side A		Side B	
		Rx (kip)	Ry (kip)	Rx (kip)	Ry (kip)
Dead Load, Self Weight	DL	0.26	0.67	-0.26	0.67
Dead Load, Collateral	EL	0.07	0.13	-0.07	0.13
Snow Load, Balanced	S	5.45	8.70	-5.45	8.70
Snow Load, Unbalanced	Su	3.38	3.30	-3.38	8.47
Wind Load	Wx	-3.90	-5.53	0.37	-5.76
Wind Load	Wx2	-3.12	0.64	-0.43	0.41
Wind Load	Wz	-0.33	-6.97	2.04	-6.89
Wind Load	Wz2	0.51	0.12	0.68	0.18
		0.00	0.00	0.00	0.00
		0.00	0.00	0.00	0.00

*See notes below		ADDITIONAL UNFACTORED BASE REACTIONS TO CONSIDER AT BASES WITH CABLE ATTACHED					
Load Case		Side A			Side B		
		Rx (kip)	Ry (kip)	Rz (kip)	Rx (kip)	Ry (kip)	Rz (kip)
Wind Load	Wz	-2.42	-9.84	-2.40	2.87	-8.57	-1.91
Dead Load, Cable (Wz)	DL	0.00	0.01		0.00	0.01	
Wind Load	Wz2	2.14	3.69	0.05	-0.03	-0.10	0.08
Dead Load, Cable (Wz2)	DL	0.01	0.02		-0.01	0.02	

STRUCTURAL DESIGN LOADS

IBC 2021; ASCE 7–16
Risk Category II

Wind Speed Vult = 100 mph,
Exposure C
Wind Pressure (q) = 21.8xKz psf

Ground Snow Load = 60 psf
Thermal Factor Ce = 1.0, Ct = 1.20
Snow Importance Factor = 1.0
Flat Roof Snow (Pf) = 50.4 psf

Seismic Design Category C
Ss = 0.391g, S1 = 0.082g
Sd1 = 0.131g, Sds = 0.384g

BEFORE YOU DIG CALL:
1–800–922–1987
www.uncc.org
Utility Notification Center
of Colorado



REVISIONS				
BY	REV	DESCRIPTION	DATE	APPROVED
MS	0	ISSUED FOR REVIEW	1/10/25	BSJ



SERVINSKY ENGINEERING
& ASSOCIATES
Consulting Structural Engineers
marks@servinskyeng.com

280 Douglas Ave
Holland, MI 49424–6515
(616) 738–1281
Fax (616) 738–6281

FARMTEK CLEARSPAN
1440 FIELD OF DREAMS WAY
DYERSVILLE, IA 52040

5173 HIGHWAY 133
SOMERSET, CO 81434
GUNNISON COUNTY

PROJECT NUMBER: FTK.25.001
FOUNDATION DRAWING FOR
56’ X 60’ LONG FARMTEK CLEARSPAN BUILDING
3,360 SF

ISSUED FOR REVIEW:
10 JANUARY 2025

INDEX OF DRAWINGS

C–1 COVER SHEET & INDEX OF DRAWINGS
S–1 FOUNDATION PLAN
S–2 MIDDLE LAYER & ENDWALL ELEVATIONS
S–3 SIDEWALL ELEVATION
S–2 CONCRETE BLOCK & MISC. DETAILS
S–3 ANCHOR & BASE PLATE LAYOUT

GENERAL

Building End Use: Workshop
Use Group: F–1 Moderate Hazard Factory
Construction Type: IIB–Membrane Fabric Building

A. GENERAL REQUIREMENTS

- All work shall be done per OSHA standards and regulations.
- Obtain prior approval from Owner when substituting materials or equipment.
- Work shall conform to all governing codes.
- Establish locations of underground utilities (provided by others).
- Servinsky Engineering & Associates is not responsible for vehicle impact to building.

B. EARTHWORK AND DRAINAGE

- Cap off or plug discontinued utilities in excavations and remove from site.

- When required by site drawings, provide drain pipe to divert storm water and roof drainage away from foundation.
- Backfill shall be clean, granular backfill compacted per the geotechnical report.
- Compact to 98 percent of maximum dry density per ASTM D–1557 Modified Proctor Density Test.
- Compact fill in 8” to 10” lifts.
- Remove unsuitable materials to firm soil.
- Slope finish grade away from structure on all sides for positive drainage. 5 percent for the first 10 feet away from structure.
- If rock is encountered during excavation, contact Engineer before proceeding with work.
- Provide final grading, topsoil, gravel, compaction and seeding as necessary within affected area of building. Fill and Compact to 100% of standard Proctor Density.

C. CONCRETE FOR PRECAST BLOCKS

- 28 day minimum compressive strength: 2500 psi.
- Precast blocks to be 2 feet x 2 feet x 6 feet long, unless noted on drawings. Local precast supplier to form and pour blocks using industry accepted standards and quality control methods. Blocks to have continuous shear key.
- Prevent spalling or honeycombing of concrete in precast blocks.
- Repair any spalled areas of blocks with EMACO S488 by BASF Company. Spalls are identified as broken concrete edges 1”x3” or larger size. Repair spalls within 12” of anchor locations.

D. BUILDING SPECIFICATIONS

- Building specifications are per FarmTek, under separate submittal. Roof fabric is per manufacturer.

E. FDN. DESIGN PARAMETERS

- Design Bearing Capacity = 2000 psf, presumptive per IBC, granular materials.
- No geotechnical report is available.

BLOCK LENGTH	NO.
6’	118
4’	2
3’	10
2’	3

COVER SHEET & INDEX OF DRAWINGS

SOMERSET, CO

GUNNISON COUNTY

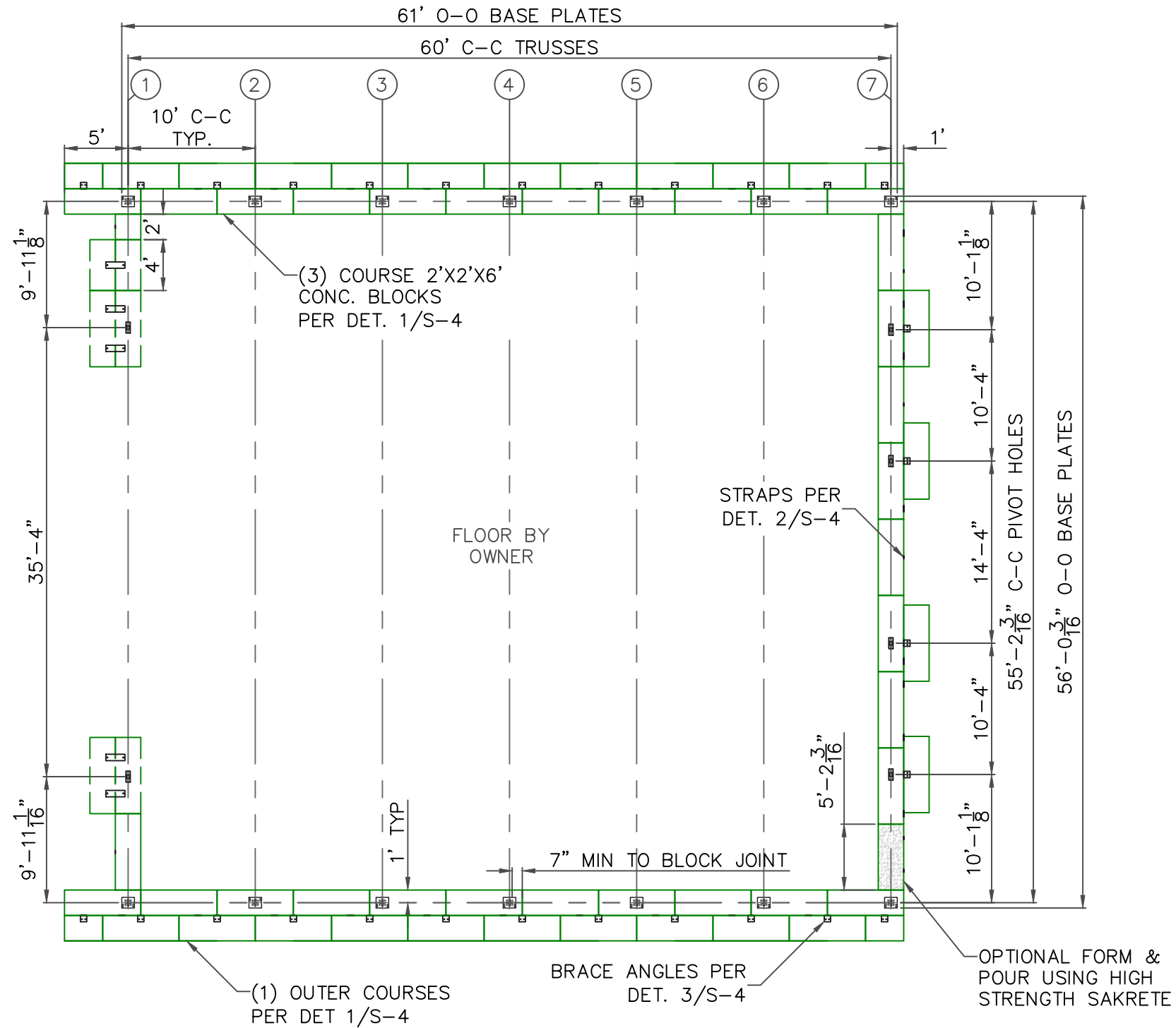
SCALE: 1” = 1’–0”

DWG NO: FTK.25.001

SHEET NO: C–1

SHEET SIZE: B

PRELIMINARY



REVISIONS				
BY	REV	DESCRIPTION	DATE	APPROVED
MS	0	ISSUED FOR REVIEW	1/10/25	BSJ



SERVINSKY ENGINEERING
& ASSOCIATES
Consulting Structural Engineers
marks@servinskyeng.com

280 Douglas Ave
Holland, MI 49424-6515
(616) 738-1281
Fax (616) 738-6281

FARMTEK CLEARSPAN
1440 FIELD OF DREAMS WAY
DYERSVILLE, IA 52040

FOUNDATION PLAN

SOMERSET, CO

GUNNISON COUNTY

SCALE: 3/32" = 1'-0"

DWG NO: FTK.25.001

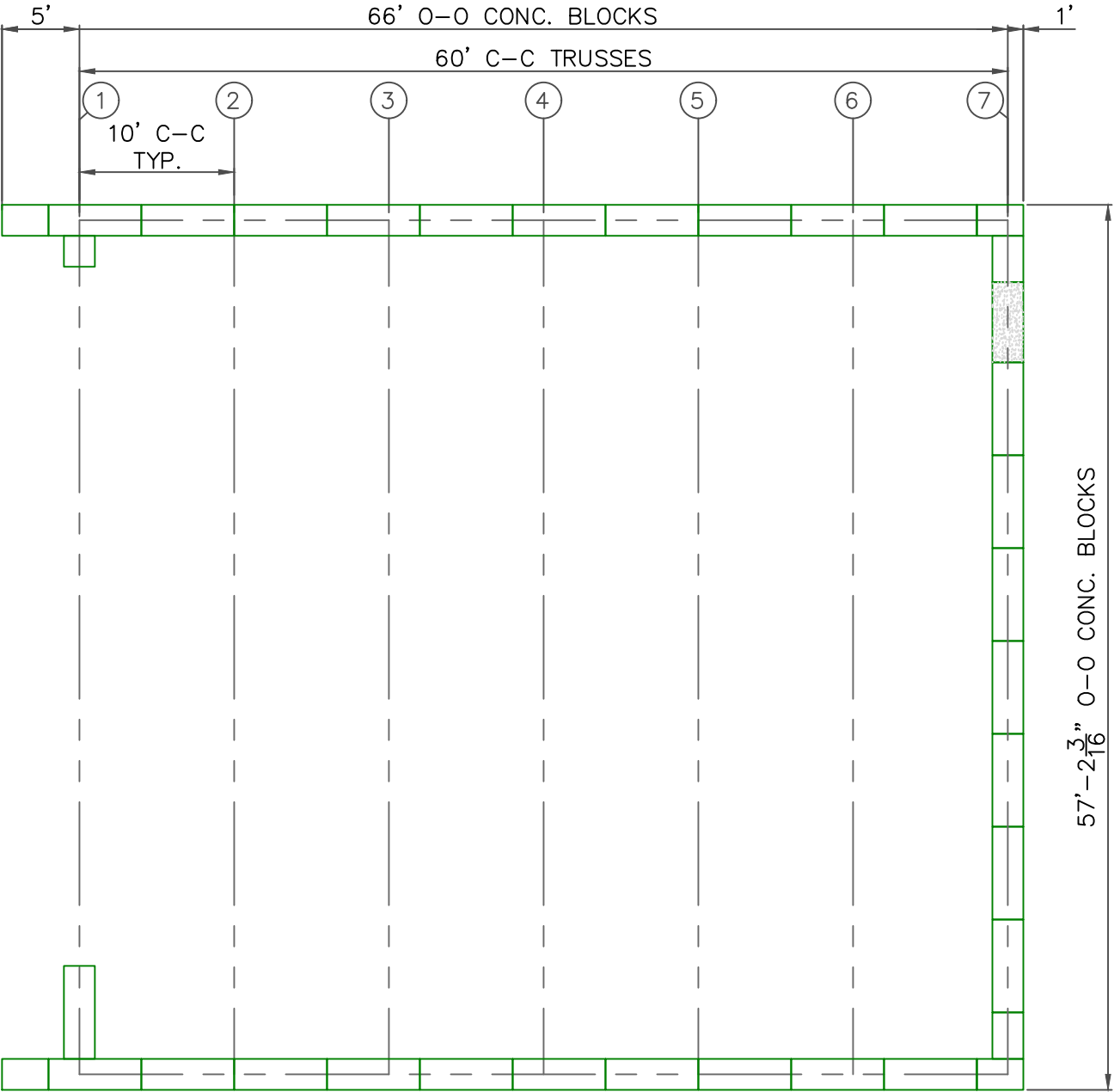
SHEET NO: S-1

SHEET SIZE: B

PRELIMINARY

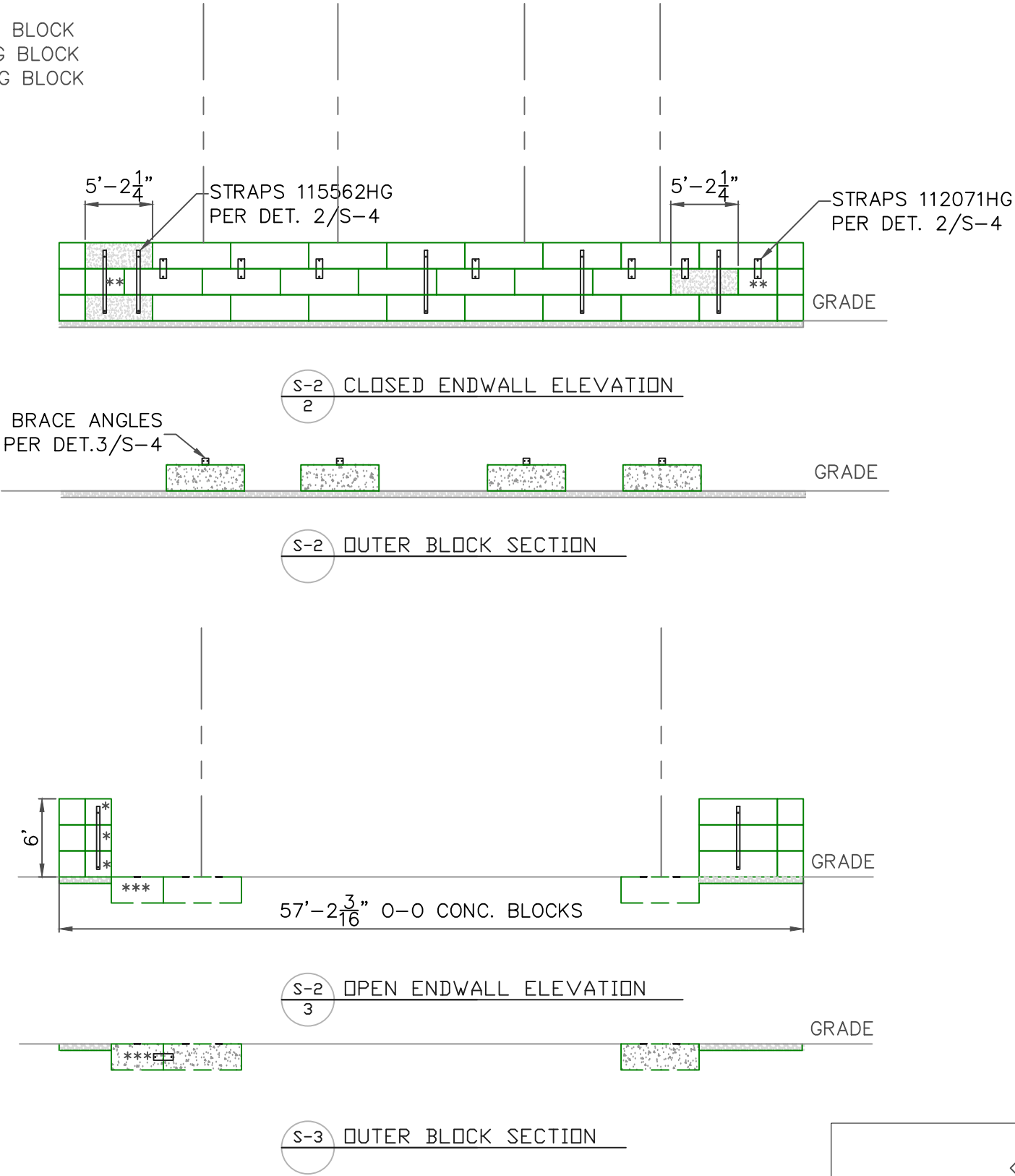
FTK.25.001

NK



S-2 1 MIDDLE ROW BLOCK LAYER

- * 2' LONG BLOCK
- ** 3' LONG BLOCK
- *** 4' LONG BLOCK



REVISIONS				
BY	REV	DESCRIPTION	DATE	APPROVED
MS	0	ISSUED FOR REVIEW	1/10/25	BSJ



SERVINSKY ENGINEERING & ASSOCIATES
Consulting Structural Engineers
marks@servinskyeng.com

280 Douglas Ave
Holland, MI 49424-6515
(616) 738-1281
Fax (616) 738-6281

FARMTEK CLEARSPAN
1440 FIELD OF DREAMS WAY
DYERSVILLE, IA 52040

MIDDLE LAYER & ENDWALL ELEVATIONS

SOMERSET, CO

GUNNISON COUNTY

SCALE: 3/32" = 1'-0"

DWG NO: FTK.25.001

SHEET NO: S-2

SHEET SIZE: B

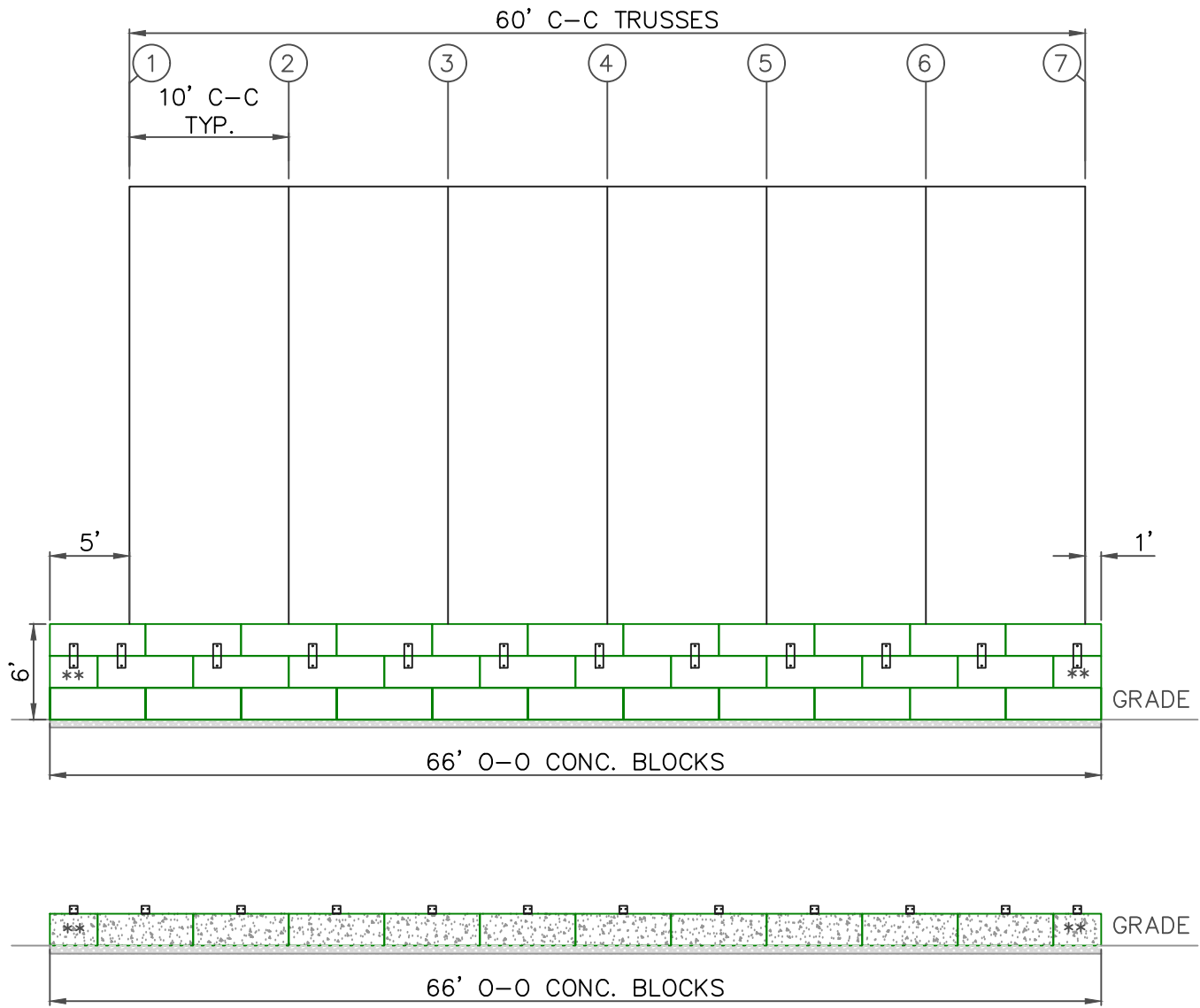
PRELIMINARY

FTK.25.001

NK

OPPOSITE SIDEWALL IS
MIRROR IMAGE

** 3' LONG BLOCK



S-3
1

OUTER BLOCK SECTION

REVISIONS				
BY	REV	DESCRIPTION	DATE	APPROVED
MS	0	ISSUED FOR REVIEW	1/10/25	BSJ



SERVINSKY ENGINEERING
& ASSOCIATES
Consulting Structural Engineers
marks@servinskyeng.com

280 Douglas Ave
Holland, MI 49424-6515
(616) 738-1281
Fax (616) 738-6281

FARMTEK CLEARSPAN
1440 FIELD OF DREAMS WAY
DYERSVILLE, IA 52040

SIDEWALL ELEVATION

SOMERSET, CO

GUNNISON COUNTY

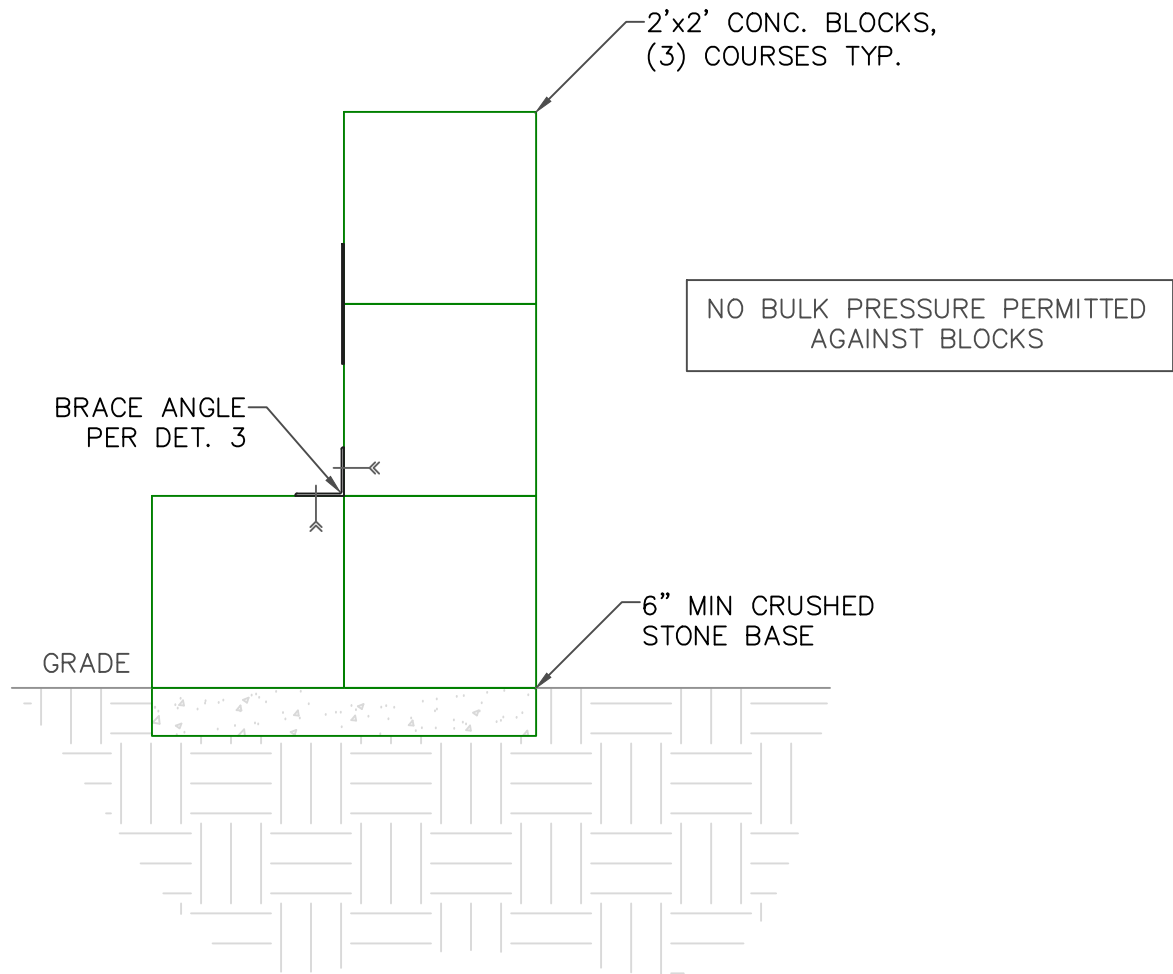
SCALE: 3/32" = 1'-0"

DWG NO: FTK.25.001

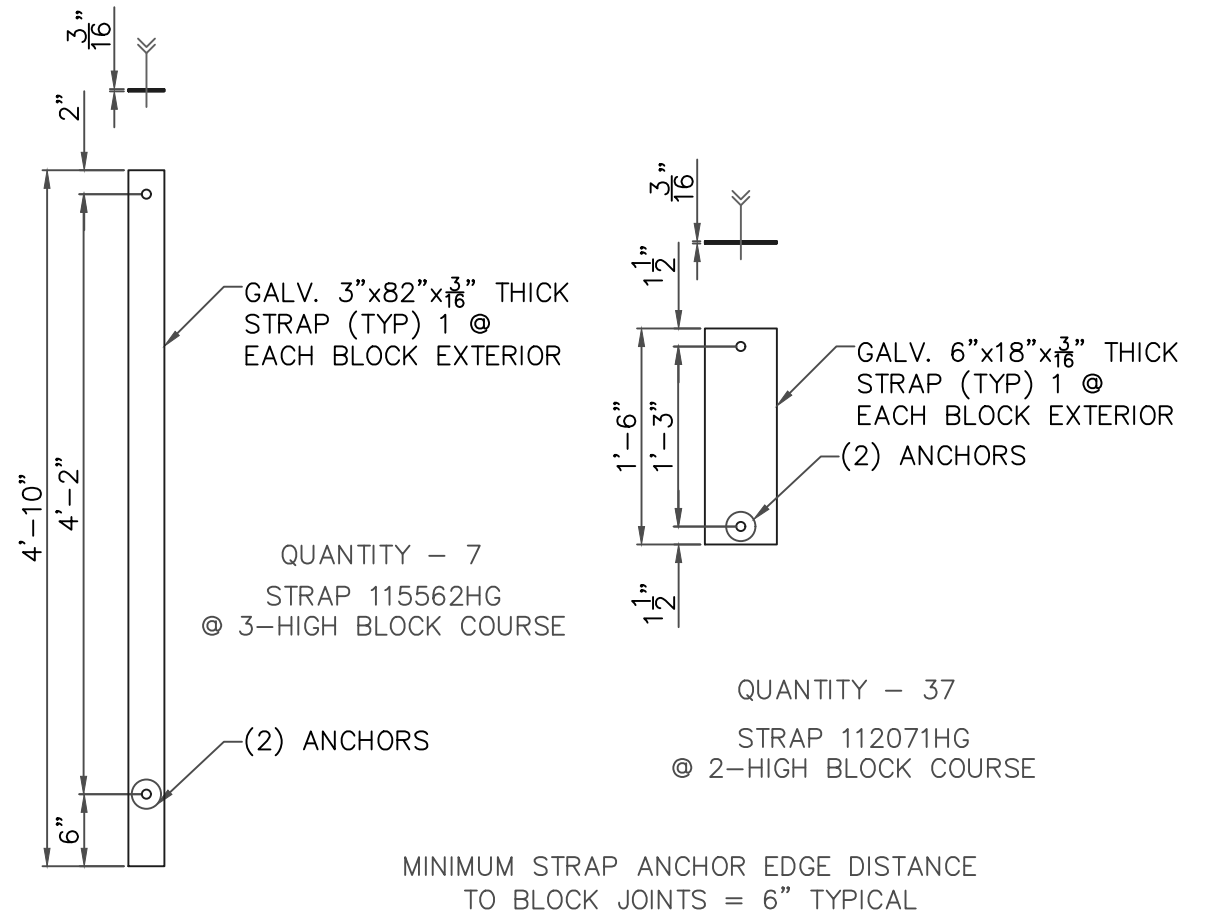
SHEET NO: S-3

SHEET SIZE: B

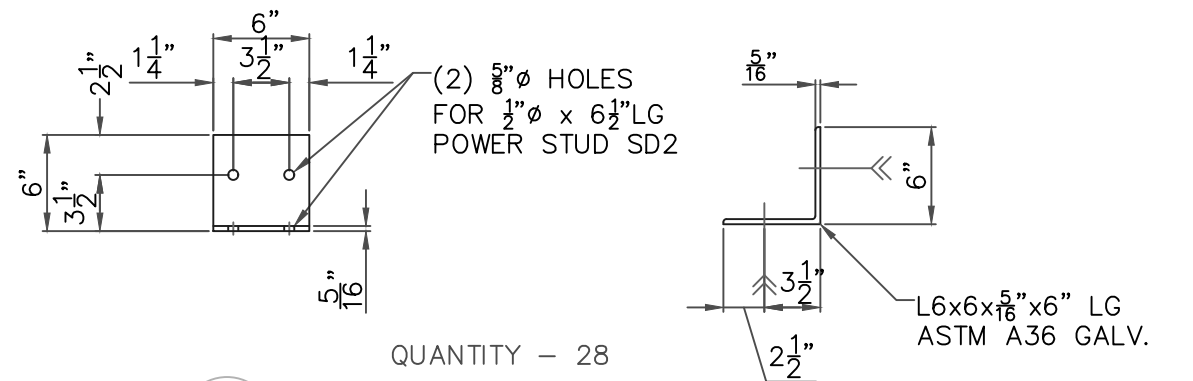
PRELIMINARY



S-4
1 BLOCK PROFILE
SCALE: 1/2" = 1'-0"



S-4
2 STRAP DETAILS
SCALE 3/4" = 1'



S-4
3 BRACE ANGLE DET
SCALE: 1" = 1'-0"

REVISIONS				
BY	REV	DESCRIPTION	DATE	APPROVED
MS	0	ISSUED FOR REVIEW	1/10/25	BSJ



SERVINSKY ENGINEERING
& ASSOCIATES
Consulting Structural Engineers
marks@servinskyeng.com

280 Douglas Ave
Holland, MI 49424-6515
(616) 738-1281
Fax (616) 738-6281

FARMTEK CLEARSPAN
1440 FIELD OF DREAMS WAY
DYERSVILLE, IA 52040

CONCRETE BLOCK & MISC. DETAILS

SOMERSET, CO

GUNNISON COUNTY

SCALE: AS NOTED

DWG NO: FTK.25.001

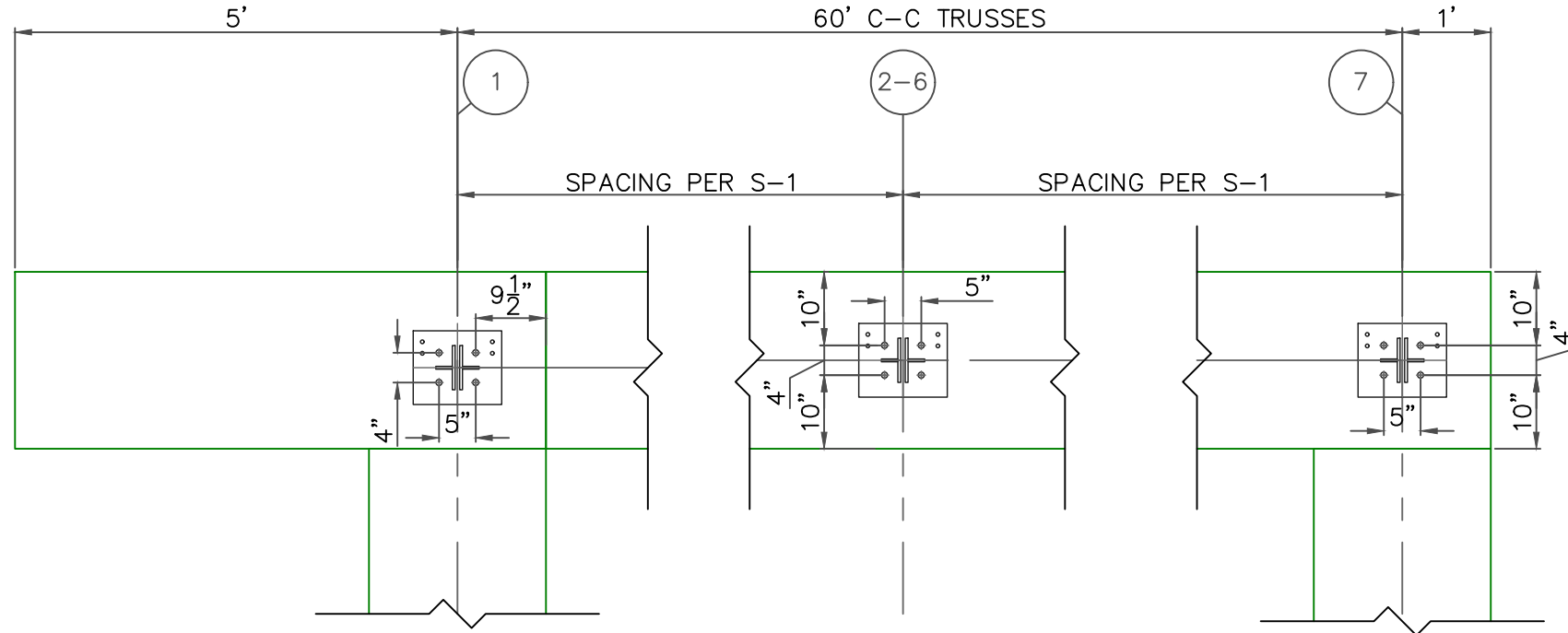
SHEET NO: S-4

SHEET SIZE: B

PRELIMINARY

FTK.25.001

NK



SIDEWALLS ARE MIRROR IMAGES

SIDEWALL ANCHORS

(4) $\frac{3}{4}$ " ϕ x 10" Lg ASTM F1554 Gr 36 Threaded Rods using Hilti HIT-HY100 Epoxy.
7 $\frac{1}{2}$ " Emb. 2 $\frac{1}{2}$ " Proj.

ENDWALL ANCHORS

$\frac{5}{8}$ " ϕ x 9" Lg ASTM F1554 Gr 55 Threaded rods using Hilti HIT-HY100 Epoxy.
7" Emb, 2" Proj.

BRACE ANGLE & STRAP ANCHORS

$\frac{5}{8}$ " ϕ x 6" Expanded Anchor KB3 LT HDG w/ (1) Washer & Nut

Install per Manufacturers Specifications.

Minimum sidewall anchor distance to block joint = 7"
Contact Engineer of Record if distance is not met.

REVISIONS				
BY	REV	DESCRIPTION	DATE	APPROVED
NK	0	ISSUED FOR REVIEW	1/10/25	BSJ



SERVINSKY ENGINEERING
& ASSOCIATES
Consulting Structural Engineers
marks@servinskyeng.com

280 Douglas Ave
Holland, MI 49424-6515
(616) 738-1281
Fax (616) 738-6281

FARMTEK CLEARSPAN
1440 FIELD OF DREAMS WAY
DYERSVILLE, IA 52040

ANCHOR & BASE PALTE LAYOUT

SOMERSET, CO

GUNNISON COUNTY

SCALE: 1/2" = 1'-0"

DWG NO: FTK.25.001

SHEET NO: S-5

SHEET SIZE: B

PRELIMINARY

NOTES:

- ALL DIMENSIONS ARE FROM CENTER TO CENTER UNLESS OTHERWISE NOTED.
- FRAMING FOR VENTS AND ADDITIONAL FRAMING, IF REQUIRED, WILL BE CUT IN FIELD USING 2" X 3" RECT. TUBE AND USE INSERTS [107923] OR [110356ALT/110356BALT].
- FRAMING FOR WALK DOORS, IF REQUIRED, WILL BE CUT IN FIELD USING 2" X 4" RECT. TUBE AND USE INSERTS [115790] OR [110356ALT/110356BALT].
- DIMENSIONS FOR TELESCOPING PURLIN LOCATIONS ARE APPROXIMATE. LOCATIONS CAN BE FIELD ADJUSTED +/- 12" FROM WHAT IS SHOWN.
- FOUNDATION ELEMENTS ARE NOT SHOWN.

LINE STYLES:

COLUMN: _____
HEADER: - - - - -
TELESCOPING PURLIN: - - - - -
2" X 3" TUBE:
2" X 4" TUBE: |||



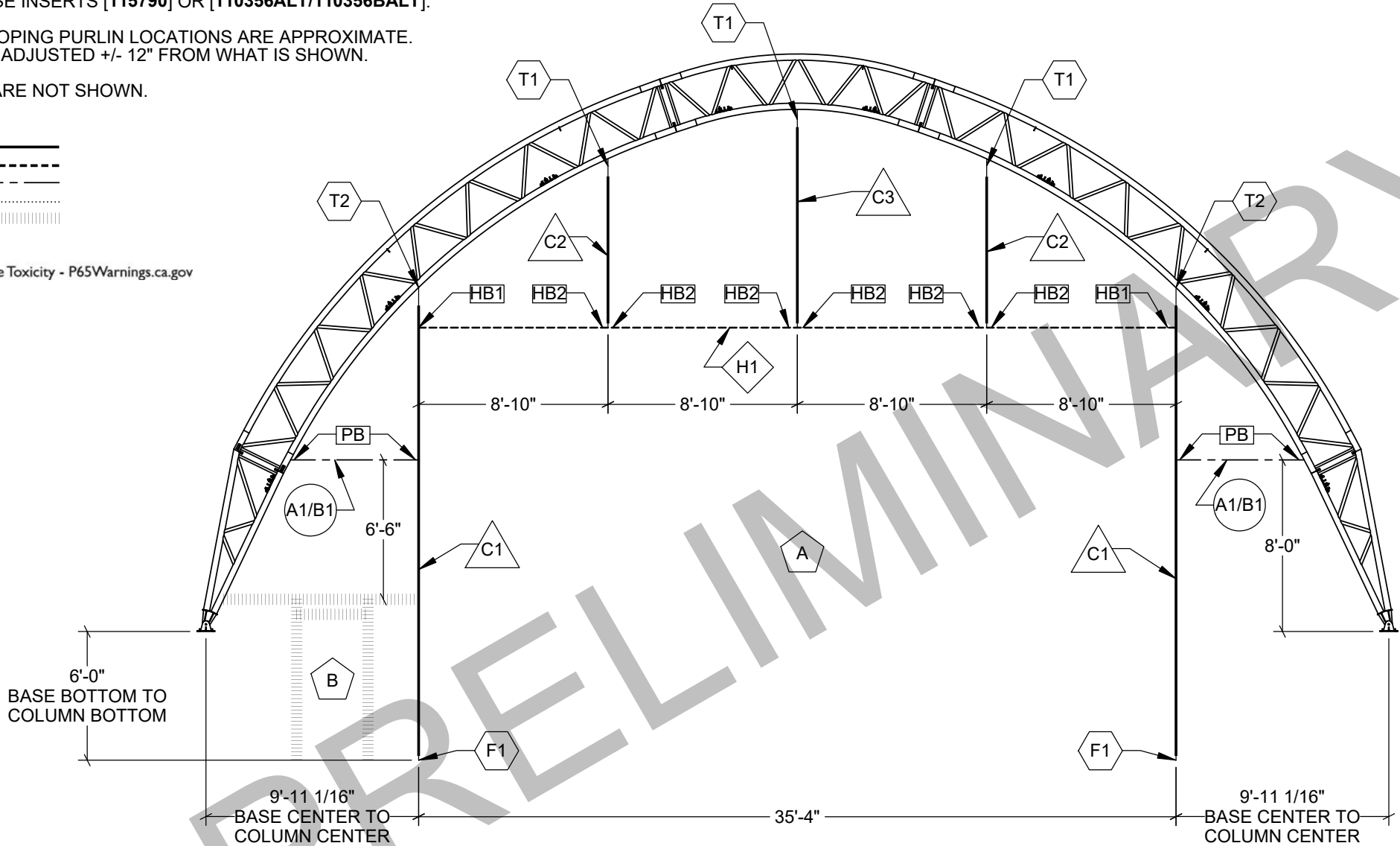
WARNING: Cancer and Reproductive Toxicity - P65Warnings.ca.gov

FRAME-OUT SCHEDULE		
CALL-OUT	DESCRIPTION	ROUGH OPENING
A	35'-0" X 20'-0" FABRIC GATHERING DOOR	35'-0" X 20'-0"
B	3'-0" X 6'-8" WALK-IN DOOR	39'-15/16" X 81'-5/8"

EW056RKF0941D

NORTHWEST ENDWALL CONTENT GUIDE:

- [L1]COVER SHEET/PART LOCATIONS/LAYOUT
[L2]CONNECTION DETAILS
[L3]KICKBACK CONNECTION DETAILS



COLUMNS
4" X 4", 8 GA, 3-PLY SQUARE TUBE

C1: EWC3P252G08

4" X 4", 8 GA, 1-PLY SQUARE TUBE

C2: EWM1P082G08
C3: EWM1P110G08

HEADERS
4" X 4", 8 GA, 3-PLY SQUARE TUBE

H1: EWH3P41875G08

TELESCOPING PURLINS
2.0" OD, 11 GA ROUND PIPE

A1: 200TP050

2.375" OD, 14 GA ROUND PIPE

B1: 2375TP050

INSERTS
TOP COLUMN INSERTS
(3.5" SQ. TUBE / 1/2" STEEL PLATE)

T1: 108151SAS01/108151SB
T2: 108151SAS01/108151SB

BOTTOM COLUMN INSERTS
(3.5" SQ. TUBE / 1/2" STEEL PLATE)

F1: 111700

BRACKETS
PURLIN BRACKET (1/8" STEEL PLATE)

PB: 106755

HEADER BRACKET (3/16" STEEL PLATE)

HB1: EWHB3P
HB2: EWHB1P

CUSTOMER DESIGN APPROVAL

CUSTOMER SIGNATURE _____

DATE _____

☐ APPROVE WITH CHANGES

☐ APPROVE

COVER/TERMINATION DETAILS: NON FIRE-RATED, POUND IN STRIP, WHITE, 12oz.

DEVELOPED BY


A DIVISION OF
ENGINEERING SERVICES & PRODUCTS CO.
1440 18TH AVENUE SW
DYERSVILLE, IA 52040
P: 563.875.6113
F: 563.875.2317
WWW.ESAPCO.COM

ORDER #:
7888719

CUSTOMER #:
--

CUSTOMER INFORMATION:

STRUCTURE SKU #:
EW056RKF0941D

STRUCTURE SIZE:
56' X 60'

STRUCTURE DESCRIPTION:
--

CUSTOMER CONTACT:

CONTACT PHONE:
--

SHEET TITLE:
COVER SHEET/PART LOCATIONS/LAYOUT

DRAWING DETAILS

DRAWN BY:
GLB

CREATION DATE:
12/30/2024

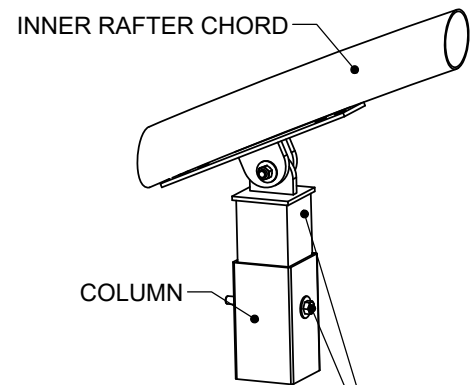
REVISIONS:

NO.	BY:	REVISION DATE:
1		
2		
3		
4		

NOT TO SCALE SHEET SIZE: 11X17

SHEET:
L1

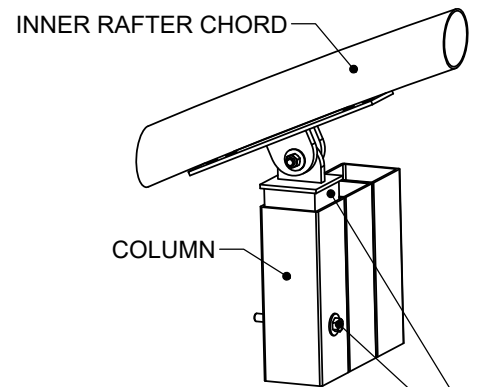
T1



ADJUSTABLE TOP COLUMN INSERT
- (1X) 1/2" X 2 1/2" HEX BOLT (HINGE BOLT) (A325)
- (4X) 1/2" WASHER (STRUCTURAL)
- (2X) 1/2" HEX NUT (STRUCTURAL)
- (2X) 3/8" BOX BOLT (THRU CHORD)
- (1X) 1/2" X 5 1/2" HEX BOLT (THRU COLUMN) (A325)

VIEW 1: ADJUSTABLE TOP COLUMN INSERT DETAIL @ C2 & C3

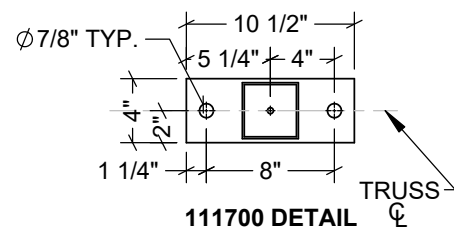
T2



ADJUSTABLE TOP COLUMN INSERT
- (1X) 1/2" X 2 1/2" HEX BOLT (HINGE BOLT) (A325)
- (4X) 1/2" WASHER (STRUCTURAL)
- (2X) 1/2" HEX NUT (STRUCTURAL)
- (2X) 3/8" BOX BOLT (THRU CHORD)
- (1X) 1/2" X 5 1/2" HEX BOLT (THRU COLUMN) (A325)

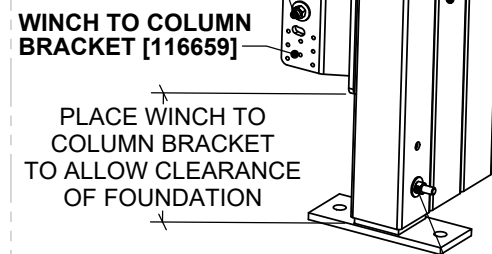
VIEW 2: ADJUSTABLE TOP COLUMN INSERT DETAIL @ C1

F1



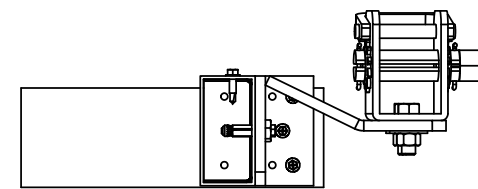
COLUMN BRACKET TO COLUMN
- (2X) 5/16" BOX BOLT

WINCH TO COLUMN BRACKET
- (2X) 1/2" X 1 1/2" HEX BOLT
- (2X) 1/2" WASHER
- (2X) 1/2" HEX NUT

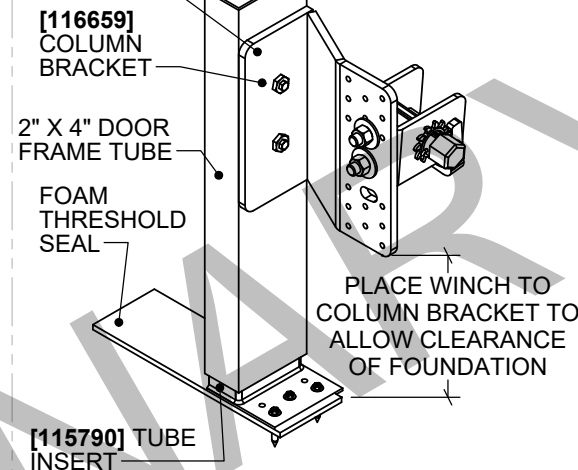


BOTTOM COLUMN INSERT
- (1X) 1/2" X 5 1/2" HEX BOLT (A325)
- (2X) 1/2" WASHER (STRUCTURAL)
- (1X) 1/2" HEX NUT (STRUCTURAL)

VIEW 3: BOTTOM COLUMN INSERT DETAIL @ C1

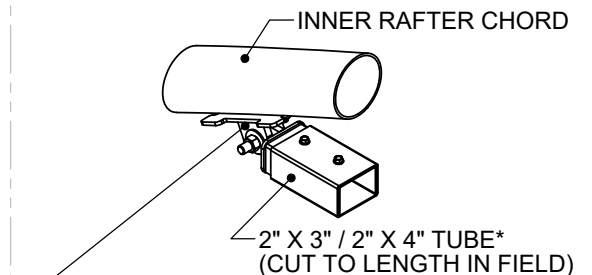


COLUMN BRACKET TO TUBE
- (2X) 5/16" BOX BOLT

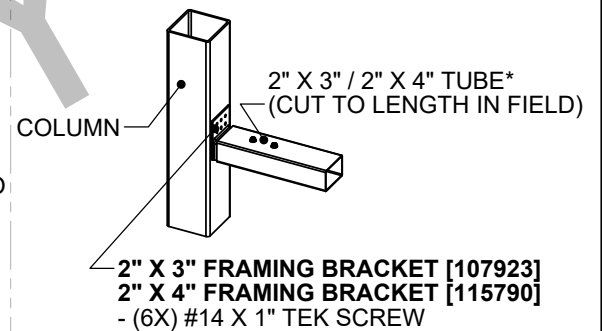


VIEW 4: COLUMN BRACKET TO WALK-IN DOOR FRAME DETAIL

***NOTE: REFER TO SHEET [L1] LINE STYLES LEGEND FOR TUBE SIZE.**

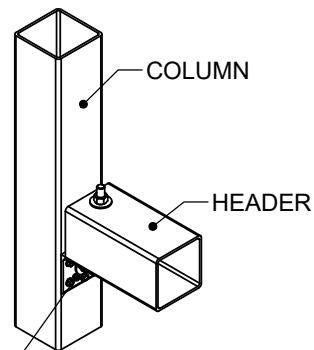


ADJUSTABLE 2" X 3" / 2" X 4" INSERT [110356ALT/110356BALT]
- (1X) 1/2" X 2 1/2" HEX BOLT (HINGE BOLT) (A325)
- (2X) 1/2" WASHER (STRUCTURAL)
- (1X) 1/2" HEX NUT (STRUCTURAL)
- (2X) 5/16" BOX BOLT (THRU CHORD)
- (2X) #14 X 1" TEK SCREW



VIEW 5: 2" X 3" / 2" X 4" INSERT DETAILS

HB1



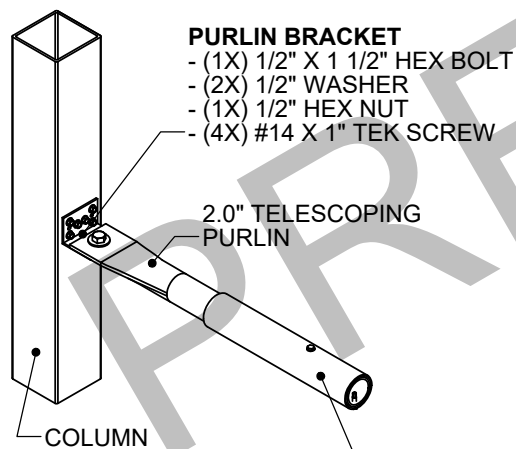
HEADER BRACKET
- (SEE CHART) 1/2" X 5 1/2" HEX BOLT (A325)
- (SEE NOTE) 1/2" WASHER (STRUCTURAL)
- (SEE NOTE) 1/2" HEX NUT (STRUCTURAL)
- (SEE CHART) #14 X 1" TEK SCREW

NOTE: EVERY BOLT WILL GET (2) WASHERS AND (1) HEX NUT. SEE CHART FOR # OF BOLTS.

BRACKET SKU	# OF BOLTS	# OF TEK SCREWS
EWHB1P	2	4
EWHB2P	4	8
EWHB3P	6	8

VIEW 6: HEADER BRACKET DETAIL

PB



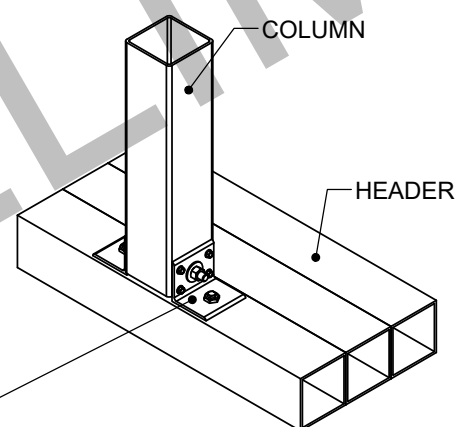
PURLIN BRACKET
- (1X) 1/2" X 1 1/2" HEX BOLT
- (2X) 1/2" WASHER
- (1X) 1/2" HEX NUT
- (4X) #14 X 1" TEK SCREW

2.375" TELESCOPING PURLIN
- (2X) #14 X 1" TEK SCREW*

***NOTE: (1X) EACH ON OPPOSING FACE FROM THE OTHER.**

VIEW 7: PURLIN BRACKET DETAIL

HB2



(2X) HEADER BRACKET
- (SEE CHART) 1/2" X 5 1/2" HEX BOLT (A325) (THRU COLUMN)
- (SEE NOTE) 1/2" WASHER (STRUCTURAL)
- (SEE NOTE) 1/2" HEX NUT (STRUCTURAL)
- (SEE CHART) #14 X 1" TEK SCREW
- (SEE CHART) 5/16" BOX BOLT (THRU HEADER)

BRACKET SKU	# OF BOLTS	# OF TEK SCREWS	# OF BOX BOLTS
EWHB1P	1	4	2
EWHB2P	2	8	4
EWHB3P	3	8	6

VIEW 8: PARTIAL ENDWALL COLUMN BRACKET DETAIL

BOX BOLT HOLE SIZES & INSTALLATION TORQUE		
BOX BOLT DIA.	HOLE DIA.	INSTALLATION TORQUE
1/4"	7/16"	14 FT-LB
5/16"	9/16"	18 FT-LB
3/8"	3/4"	33 FT-LB
1/2"	13/16"	59 FT-LB
5/8"	1-1/16"	140 FT-LB
3/4"	1-5/16"	221 FT-LB
1. REFER TO BOX BOLT TECHNICAL DATA FOR MORE INFORMATION IF USING BOX BOLTS		

CUSTOMER INFORMATION: -- -- --	STRUCTURE SKU # EW056RK0941D	
	STRUCTURE SIZE: 56' X 60'	
CUSTOMER CONTACT: --	CONTACT PHONE: --	STRUCTURE DESCRIPTION: --
SHEET TITLE: CONNECTION DETAILS		

DRAWING DETAILS	
DRAWN BY: GLB	CREATION DATE: 12/30/2024
REVISIONS:	
NO.	BY:
1	
2	
3	
4	
NOT TO SCALE	
SHEET SIZE: 11X17	
SHEET:	

- 108151SAS01** (1/2" STEEL PLATE)
- (2X) 3/8" BOX BOLT (THRU CHORD)
- (1X) 1/2" X 2 1/2" HEX BOLT (HINGE BOLT) (A325)
- (2X) 1/2" WASHER (STRUCTURAL)
- (1X) 1/2" HEX NUT (STRUCTURAL)

- EBTP400G12S001** (4.0" OD, 12 GA, ROUND PIPE)
- (2X) 1/2" X 5 1/2" HEX BOLT (A325)
- (4X) 1/2" WASHER (STRUCTURAL)
- (2X) 1/2" HEX NUT (STRUCTURAL)
- (2X) #14 X 1" TEK SCREW

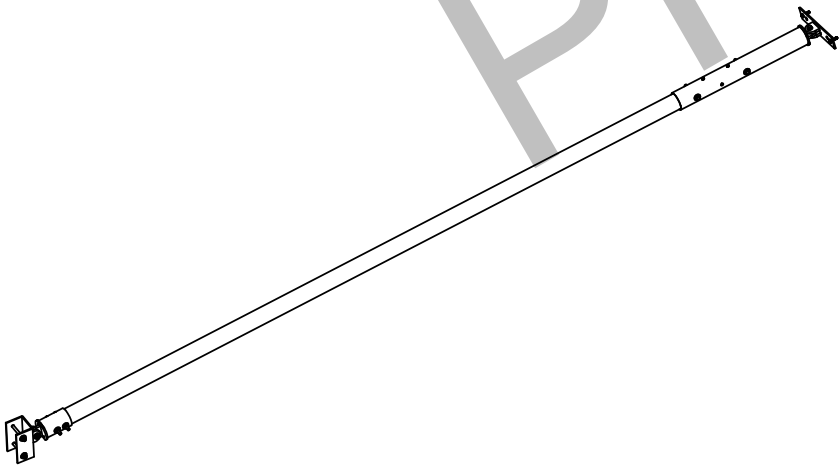
350P116G14 (3.5" OD, 14 GA, ROUND PIPE)

NOTE: USE (2X) #14 X 1" TEK SCREWS FOR TEMPORARILY HOLDING KICKBACK POSITION.

VIEW 1: KICKBACK CONNECTION DETAILS

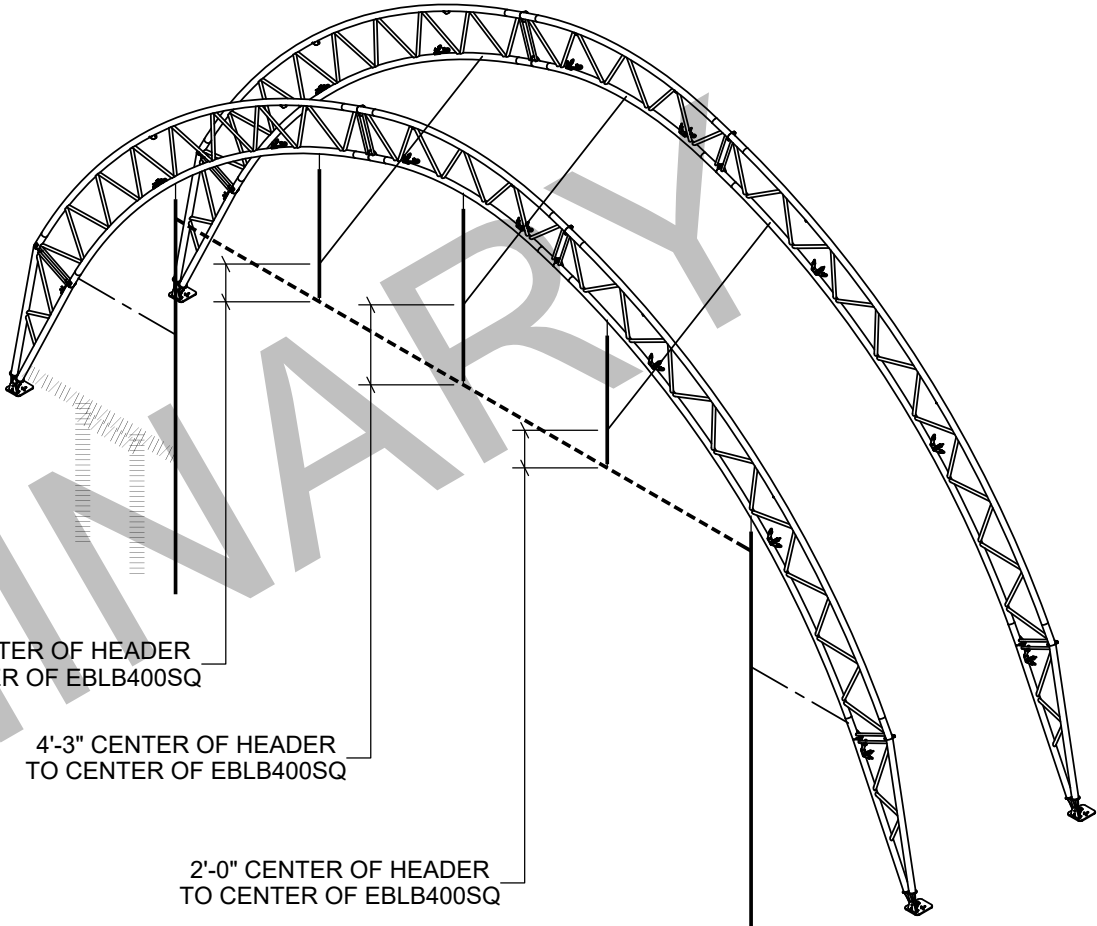
- 350P116G14** (3.5" OD, 14 GA, ROUND PIPE)
- EBCT400LP** (4.0" OD, 10 GA, ROUND PIPE)
- (2X) 1/2" X 5 1/2" HEX BOLT (A325)
- (1X) 1/2" X 2 1/2" HEX BOLT (HINGE BOLT) (A325)
- (6X) 1/2" WASHER (STRUCTURAL)
- (3X) 1/2" HEX NUT (STRUCTURAL)
- EBLB400SQ** (1/4" & 1/2" STEEL PLATE)
- (2X) 1/2" X 5 1/2" HEX BOLT (A325)
- (4X) 1/2" WASHER (STRUCTURAL)
- (2X) 1/2" HEX NUT (STRUCTURAL)

VIEW 2: KICKBACK CONNECTION DETAILS AT COLUMN



VIEW 3: TYPICAL KICKBACK ASSEMBLY

NOTE: LATERAL AND ANGLED BRACES NOT SHOWN FOR CLARITY.



DEVELOPED BY
ClearSpan
A DIVISION OF
ENGINEERING SERVICES & PRODUCTS CO.
1440 18TH AVENUE SW
DYERSVILLE, IA 52040
P: 563.875.6113
F: 563.875.2317
WWW.ESAPCO.COM

ORDER #:
7888719

CUSTOMER #:
--

CUSTOMER INFORMATION:	STRUCTURE SKU #: EW056RKF0941D	STRUCTURE SIZE: 56' X 60'	STRUCTURE DESCRIPTION:
	CUSTOMER CONTACT:	CONTACT PHONE:	
SHEET TITLE: KICKBACK CONNECTION DETAILS			

DRAWING DETAILS		
DRAWN BY: GLB		CREATION DATE: 12/30/2024
REVISIONS:		
NO.	BY:	REVISION DATE:
1		
2		
3		
4		
NOT TO SCALE		SHEET SIZE: 11X17
SHEET:		

NOTES:

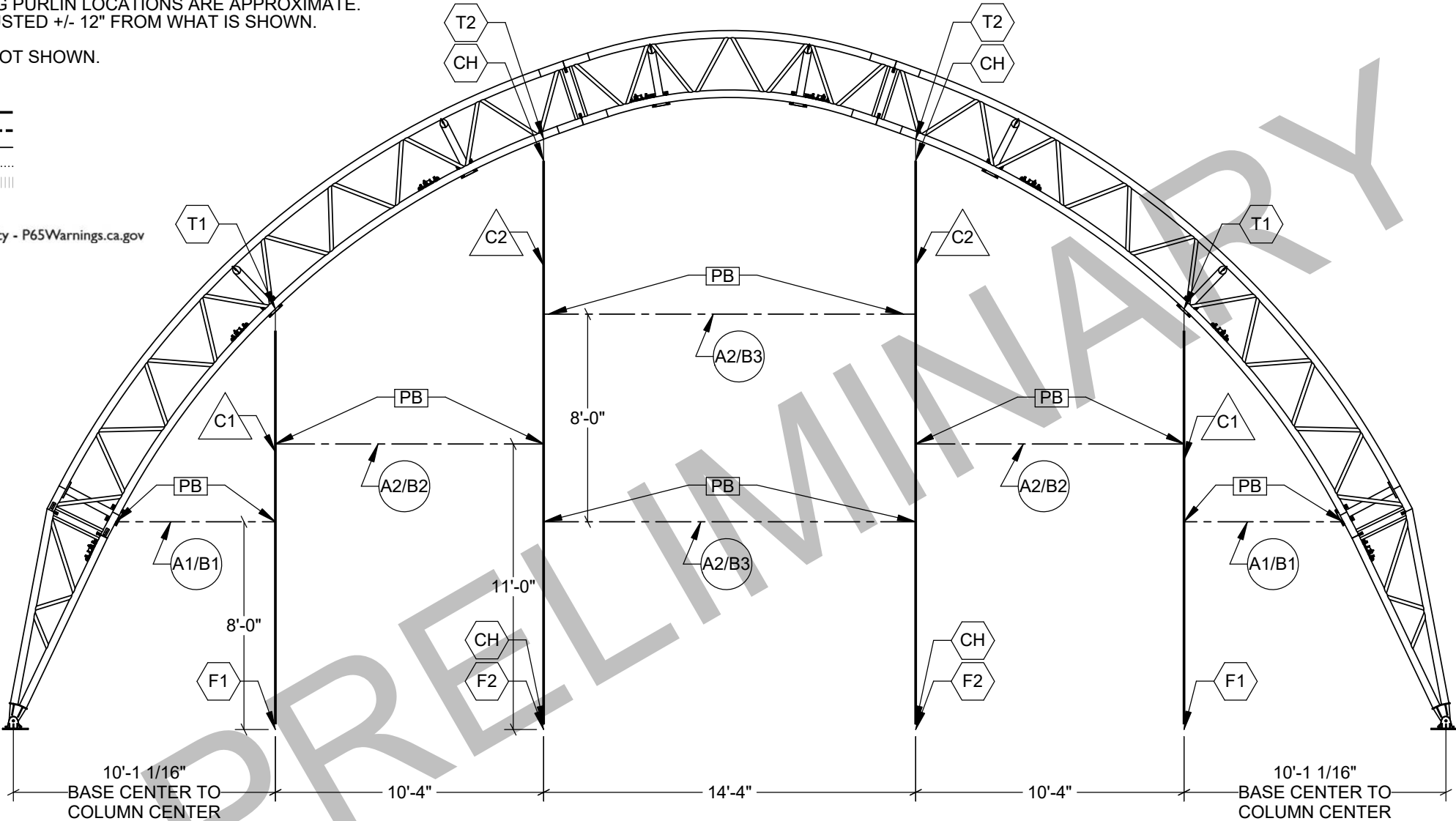
- ALL DIMENSIONS ARE FROM CENTER TO CENTER UNLESS OTHERWISE NOTED.
- FRAMING FOR VENTS AND ADDITIONAL FRAMING, IF REQUIRED, WILL BE CUT IN FIELD USING 2" X 3" RECT. TUBE AND USE INSERTS [107923] OR [110356ALT/110356BALT].
- FRAMING FOR WALK DOORS, IF REQUIRED, WILL BE CUT IN FIELD USING 2" X 4" RECT. TUBE AND USE INSERTS [115790] OR [110356ALT/110356BALT].
- DIMENSIONS FOR TELESCOPING PURLIN LOCATIONS ARE APPROXIMATE. LOCATIONS CAN BE FIELD ADJUSTED +/- 12" FROM WHAT IS SHOWN.
- FOUNDATION ELEMENTS ARE NOT SHOWN.

LINE STYLES:

COLUMN: _____
HEADER: _____
TELESCOPING PURLIN: _____
2" X 3" TUBE: _____
2" X 4" TUBE: _____



WARNING: Cancer and Reproductive Toxicity - P65Warnings.ca.gov



COLUMNS
4" X 4", 8 GA, 1-PLY SQUARE TUBE

C1: **EWC1P182G08**
8" X 4", 8 GA, 1-PLY RECT. TUBE

C2: **EWC8X4G08L260**

TELESCOPING PURLINS
2.0" OD, 11 GA ROUND PIPE

A1: **200TP050**
A2: **200TP060**
2.375" OD, 14 GA ROUND PIPE

B1: **2375TP050**
B2: **2375TP085**
B3: **2375TP138**

INSERTS
TOP COLUMN INSERTS
(3.5" SQ. TUBE / 1/4" STEEL PLATE)

T1: **108151SA/108151SB**
T2: **108151SA/108151SB**

BOTTOM COLUMN INSERTS
(3.5" SQ. TUBE / 1/2" STEEL PLATE)

F1: **111700**
F2: **111700**

"C" CHANNEL INSERTS
(1/8" STEEL PLATE)

CH: **111260**

BRACKETS
PURLIN BRACKET (1/8" STEEL PLATE)
PB: **106755**

SOUTHEAST ENDWALL CONTENT GUIDE:

[M1]COVER SHEET/PART LOCATIONS/LAYOUT
[M2]CONNECTION DETAILS

CUSTOMER DESIGN APPROVAL	
CUSTOMER SIGNATURE	
DATE	<input type="checkbox"/> APPROVE WITH CHANGES <input type="checkbox"/> APPROVE
COVER/TERMINATION DETAILS: NON FIRE-RATED, POUND IN STRIP, WHITE, 12oz.	

DEVELOPED BY

ClearSpan

A DIVISION OF
ENGINEERING SERVICES & PRODUCTS CO.

1440 18TH AVENUE SW
DYERSVILLE, IA 52040
P: 563.875.6113
F: 563.875.2317
WWW.ESAPCO.COM

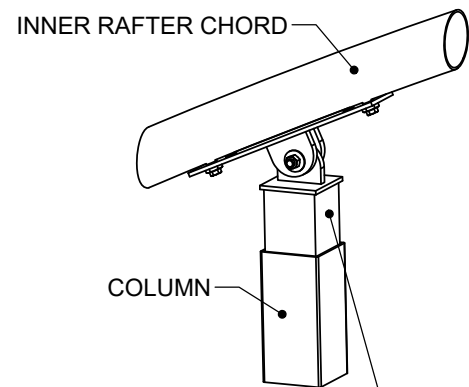
ORDER #:
7888719

CUSTOMER #:
--

STRUCTURE SKU #: EW056RKF0950D	STRUCTURE SIZE: 56' X 60'	STRUCTURE DESCRIPTION:
CUSTOMER INFORMATION:	CONTACT PHONE:	
CUSTOMER CONTACT:		
SHEET TITLE: COVER SHEET/PART LOCATIONS/LAYOUT		

DRAWING DETAILS		
DRAWN BY: GLB	CREATION DATE: 12/30/2024	
REVISIONS:		
NO.	BY:	REVISION DATE:
1		
2		
3		
4		
NOT TO SCALE		SHEET SIZE: 11X17
SHEET:		M1

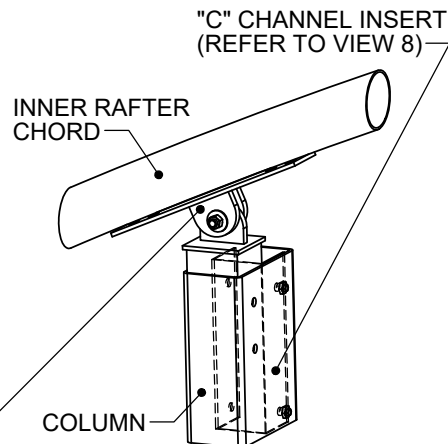
T1



ADJUSTABLE TOP COLUMN INSERT
- (1X) 1/2" X 2 1/2" HEX BOLT (HINGE BOLT)
(A325)
- (2X) 1/2" WASHER (STRUCTURAL)
- (1X) 1/2" HEX NUT (STRUCTURAL)
- (2X) 3/8" BOX BOLT (THRU CHORD)

VIEW 1: ADJUSTABLE TOP COLUMN INSERT DETAIL @ C1

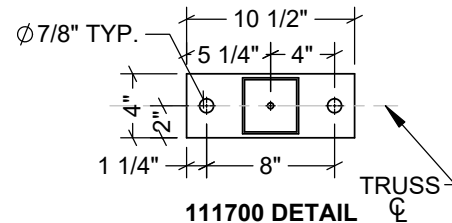
T2



ADJUSTABLE TOP COLUMN INSERT
- (1X) 1/2" X 2 1/2" HEX BOLT (HINGE BOLT)
(A325)
- (2X) 1/2" WASHER (STRUCTURAL)
- (1X) 1/2" HEX NUT (STRUCTURAL)
- (2X) 3/8" BOX BOLT (THRU CHORD)

VIEW 2: ADJUSTABLE TOP COLUMN INSERT DETAIL @ C2

F1



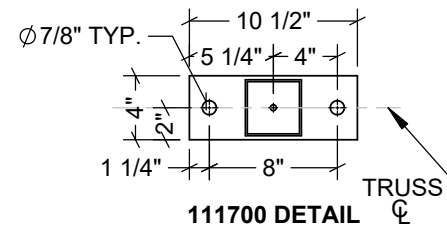
WINCH TO COLUMN BRACKET [116659]
- (2X) 1/2" X 1 1/2" HEX BOLT
- (2X) 1/2" WASHER
- (2X) 1/2" HEX NUT

COLUMN BRACKET TO COLUMN
- (2X) 1/2" X 5 1/2" HEX BOLT (A325)
- (4X) 1/2" WASHER (STRUCTURAL)
- (2X) 1/2" HEX NUT (STRUCTURAL)

NOTE: BOTTOM HOLE OF COLUMN TO ALIGN WITH BOTTOM HOLE OF INSERT

VIEW 3: BOTTOM COLUMN INSERT DETAIL @ C1

F2



WINCH TO COLUMN BRACKET [116659]
- (2X) 1/2" X 1 1/2" HEX BOLT
- (2X) 1/2" WASHER
- (2X) 1/2" HEX NUT

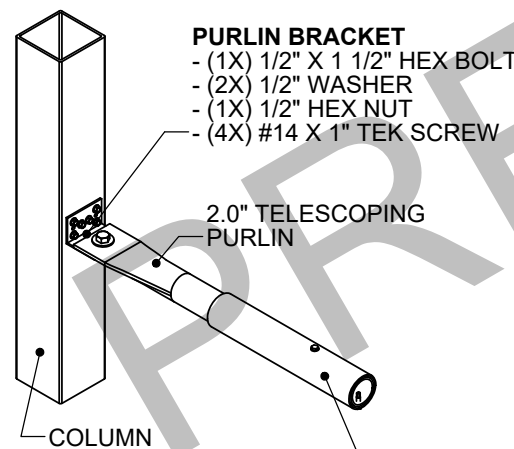
COLUMN BRACKET TO COLUMN
- (2X) 1/2" X 5 1/2" HEX BOLT (A325)
- (4X) 1/2" WASHER (STRUCTURAL)
- (2X) 1/2" HEX NUT (STRUCTURAL)

NOTE: BOTTOM HOLE OF COLUMN TO ALIGN WITH BOTTOM HOLE OF INSERT

VIEW 4: BOTTOM COLUMN INSERT DETAIL @ C2

VIEW 5: NOT USED

PB

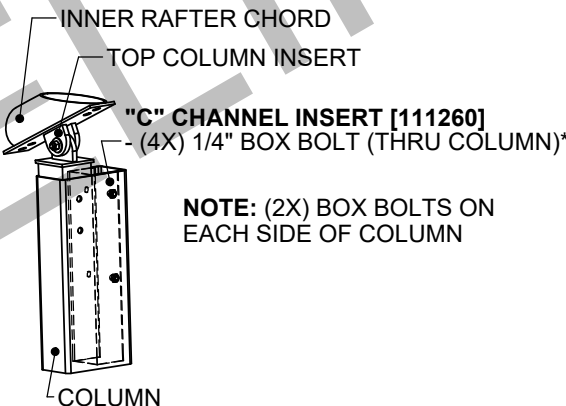


2.375" TELESCOPING PURLIN
- (2X) #14 X 1" TEK SCREW*

***NOTE: (1X) EACH ON OPPOSING FACE FROM THE OTHER.**

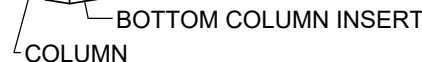
VIEW 7: PURLIN BRACKET DETAIL

CH



"C" CHANNEL INSERT [111260]
- (4X) 1/4" BOX BOLT (THRU COLUMN)*

NOTE: (2X) BOX BOLTS ON EACH SIDE OF COLUMN



VIEW 8: "C" CHANNEL INSERT DETAIL

VIEW 6: NOT USED

BOX BOLT HOLE SIZES & INSTALLATION TORQUE 1		
BOX BOLT DIA.	HOLE DIA.	INSTALLATION TORQUE
1/4"	7/16"	14 FT-LB
5/16"	9/16"	18 FT-LB
3/8"	3/4"	33 FT-LB
1/2"	13/16"	59 FT-LB
5/8"	1-1/16"	140 FT-LB
3/4"	1-5/16"	221 FT-LB

1. REFER TO BOX BOLT TECHNICAL DATA FOR MORE INFORMATION IF USING BOX BOLTS

CUSTOMER INFORMATION: STRUCTURE SKU #: EW056RKF0950D	STRUCTURE SIZE: 56' X 60'	STRUCTURE DESCRIPTION: --
	CONTACT PHONE: --	SHEET TITLE: CONNECTION DETAILS

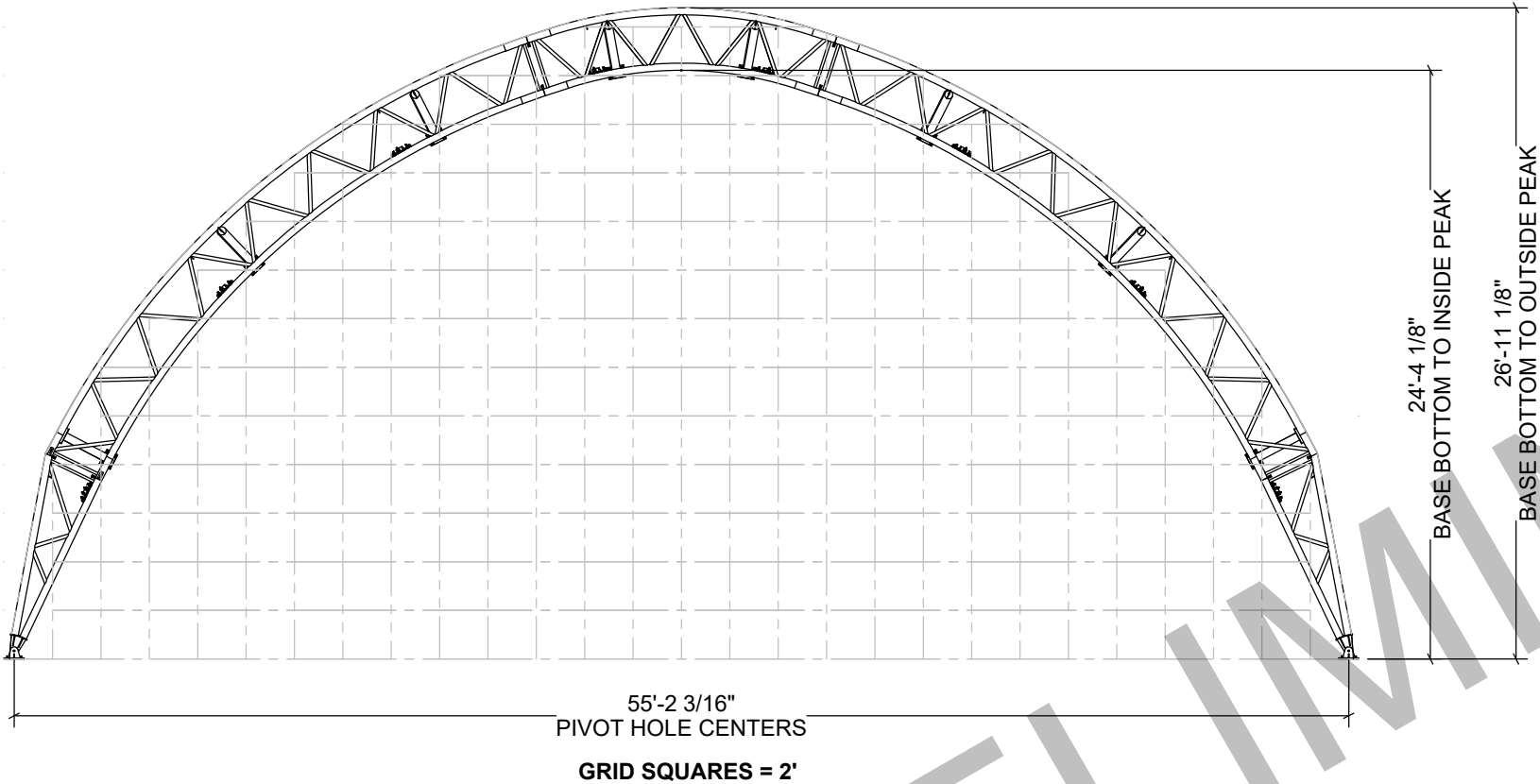
DRAWING DETAILS		
DRAWN BY: GLB	CREATION DATE: 12/30/2024	
REVISIONS:		
NO.	BY:	REVISION DATE:
1		
2		
3		
4		
NOT TO SCALE		SHEET SIZE: 11X17
SHEET:		
M2		

ADDITIONAL INFORMATION

THESE PRINTS IDENTIFY AND SHOW THE MAIN COMPONENTS AND CONNECTIONS FOR THIS BUILDING. LENGTH, WIDTH, AND OTHER IMPORTANT DIMENSIONS ARE ALSO PRESENT.

TO BEST UNDERSTAND HOW TO CONSTRUCT THIS BUILDING, THE INFORMATION CONTAINED WITHIN THESE SHEETS SHALL BE USED WITH THE INSTRUCTION MANUAL SHIPPED WITH THE BUILDING.

THE INSTRUCTIONS INCLUDE DETAILS NEEDED DURING CONSTRUCTION.



WARNING: Cancer and Reproductive Toxicity - P65Warnings.ca.gov

T056RKMf062060

BUILDING CONTENT GUIDE:

- [A1]COVER SHEET
- [B1]GENERAL NOTES
- [C1]BUILDING PLAN VIEW
- [D1]MATERIAL SPECIFICATIONS
- [E1]RAFTER PROFILES
- [F1]SIDE PROFILES
- [G1]DETAIL LOCATIONS & BASE DETAILS
- [G2]GENERAL CONNECTION DETAILS
- [G3]CABLE LAYOUT & DETAILS
- [H1]BASE PLATE LAYOUT & DETAILS
- [I]OMITTED
- [J1]BUILDING REACTION DATA
- [K]OMITTED
- [L1 - L3]NORTHWEST ENDWALL: EW056RKF0941D
- [M1 - M2].....SOUTHEAST ENDWALL: EW056RKF0950D

CUSTOMER DESIGN APPROVAL

PLEASE SIGN AND CHECK THE APPROPRIATE BOX BELOW THE SIGNATURE AFTER REVIEWING THE DOCUMENTS.

MY SIGNATURE BELOW ACKNOWLEDGES THAT I HAVE READ AND REVIEWED ALL THE SHEETS LISTED IN THE CONTENT GUIDE AND AGREE TO THE SPECIFICATIONS SHOWN UNLESS OTHERWISE NOTED.

UPON ACCEPTANCE OF THE DRAWINGS, ANY DEVIATIONS FROM THE SIGNED DRAWINGS AND SPECIFICATIONS OUTLINED IN THE EXECUTED DRAWINGS ARE SUBJECT TO ADDITIONAL CHARGES AND MAY RESULT IN DELAY OF INSTALLATION OR DELIVERY OF YOUR STRUCTURE. A CHANGE ORDER WILL BE ISSUED TO YOU WITH THE OUTLINED ADDITIONAL COST ASSOCIATED WITH THESE CHANGES AND A PROPOSED NEW DELIVERY SCHEDULE.

NO CHANGES WILL BE ACCEPTED UNLESS WE HAVE A CHANGE ORDER SIGNED BY AN AUTHORIZED REPRESENTATIVE.

FIRE-RATED OR NON FIRE-RATED

NON FIRE-RATED

TERMINATION OF FABRIC

POUND IN STRIP

FABRIC COLOR

WHITE

WEIGHT OF MATERIAL

12

oz.

CUSTOMER SIGNATURE

DATE

☐ APPROVE

☐ APPROVE WITH CHANGES

DEVELOPED BY

ClearSpan

A DIVISION OF
ENGINEERING SERVICES & PRODUCTS CO.
1440 18TH AVENUE SW
DYERSVILLE, IA 52040
P: 563.875.6113
F: 563.875.2317
WWW.ESAPCO.COM

ORDER #:

7888719

CUSTOMER #:

--

CUSTOMER INFORMATION: 		STRUCTURE SKU #: T056RKMf062060	
CUSTOMER CONTACT: 	CONTACT PHONE: 	STRUCTURE SIZE: 56' X 60'	
	STRUCTURE DESCRIPTION: 		
SHEET TITLE: COVER SHEET			

DRAWING DETAILS			
DRAWN BY: GLB		CREATION DATE: 12/30/2024	
REVISIONS:			
NO.	BY:	REVISION DATE:	
1			
2			
3			
4			
NOT TO SCALE		SHEET SIZE: 11X17	
SHEET:			
A1			

GENERAL NOTES:

FOUNDATION:

1. FOUNDATION AND ANCHORING ARE NOT ADDRESSED BY THESE DRAWINGS.

GENERAL ABBREVIATIONS:

TOS TOP OF STEEL / **TSL** TOP OF SLAB / **GALV.** GALVANIZED / **FND** FOUNDATION / **EL** ELEVATION / **RND.** ROUND / **GA** GAUGE / **DIA.** DIAMETER / **TYP.** TYPICAL / **LBS.** POUNDS / **CL** CENTERLINE

SITE CONDITIONS:

1. NEITHER CLEARSPAN NOR THE BUILDING DESIGNER HAVE VISITED THIS JOBSITE. INFORMATION CONTAINED HEREIN IS BASED ON CLIENT SUPPLIED DATA AND MEASUREMENTS.

STEEL:

1. UNLESS OTHERWISE NOTED, ALL STRUCTURAL STEEL TUBING SHALL BE GALVANIZED, MIN. YIELD STRENGTH 50 KSI, AND SHALL MEET OR EXCEED THE REQUIREMENTS OF ASTM A500.
2. UNLESS OTHERWISE NOTED, STEEL PLATES SHALL COMPLY WITH ASTM A572 GRADE 50 OR EQUAL FOR 3/16" OR GREATER THICKNESS AND ASTM A1011 GRADE 50 OR ASTM A653 GRADE 50 OR EQUAL FOR LESS THAN 3/16" THICKNESS.
3. ALL STRUCTURAL STEEL IS TO BE FABRICATED IN ACCORDANCE WITH THE LATEST EDITION OF AISC "SPECIFICATION FOR THE DESIGN, FABRICATION AND ERECTION OF STRUCTURAL STEEL FOR BUILDINGS."

BOLTS:

1. UNLESS OTHERWISE NOTED, ALL BOLTED CONNECTIONS SHALL USE SAE J429 GRADE 2 OR A307 OR BETTER BOLTS WITH COMPATIBLE WASHERS AND NUTS OF DIAMETERS INDICATED ON PLANS. BOLTS NEED ONLY BE TIGHTENED TO THE SNUG-TIGHT CONDITION. THE SNUG-TIGHT CONDITION IS DEFINED AS THE TIGHTNESS ATTAINED BY A FEW IMPACTS OF AN IMPACT WRENCH, OR THE FULL EFFORT OF A PERSON USING AN ORDINARY SPUD WRENCH.

CABLES AND HARDWARE:

1. ALL CABLE SHALL BE GALVANIZED STEEL, MULTIPURPOSE, 7X19 (UP TO 3/8" DIA.) OR 6X26 (1/2" DIA.) CLASS STRAND CORE COMMERCIAL GRADE, OF DIAMETER INDICATED.
2. CABLE SLEEVES SHALL BE INSTALLED PER MANUFACTURER'S RECOMMENDATIONS.
3. USE THIMBLES WITH CABLE SLEEVES IN ALL LOOP-END APPLICATIONS.
4. TENSION CABLES AT TURNBUCKLE TO TAUT CONDITION (STRAIGHT AND NOT SLACK OR LOOSE).
5. TIGHTEN CABLES SEQUENTIALLY TO AVOID TWISTING OR DEFORMING STRUCTURAL ELEMENTS DURING ERECTION. RECHECK PREVIOUSLY TIGHTENED CABLES UNTIL ALL CABLES ACHIEVE TAUT CONDITION.

WELDING:

1. ALL WELDING SHALL BE IN ACCORDANCE WITH THE LATEST EDITION OF AWS D1.1 AND D1.3.
2. REFER TO AWS PUBLICATION D19.0-72: WELDING ZINC-COATED STEEL AND "WELDING GUIDELINES" PUBLISHED BY ALLIED TUBE AND CONDUIT-HARVEY ILLINOIS, FOR RECOMMENDED PROCESSES AND PRACTICES FOR WELDING GALVANIZED STEEL.
3. ALL SHOP WELDING IS TO BE PERFORMED BY CERTIFIED WELDERS.

PAINTING AND TOUCH-UP:

1. AFTER SHOP FABRICATION, PAINT ALL BARE STEEL, WELDS, AND ABRADED AREAS WITH COLD GALVANIZING COMPOUND CONSISTENT WITH GALVANIZED TUBE MANUFACTURER'S RECOMMENDATIONS FOR COLOR AND COMPOSITION. PRIOR TO TOUCH-UP, CLEAN WELDED AND ABRADED AREAS WITH A WIRE BRUSH. SURFACES MUST BE CLEAN AND OIL FREE.
2. AFTER FIELD INSTALLATION, TOUCH-UP ANY FIELD WELDS AND DAMAGED AREAS WITH COLD GALVANIZING COMPOUND.

ERECTION AND FIELD QUALITY CONTROL:

1. THE ERECTOR IS RESPONSIBLE FOR DESIGNING AND FURNISHING ALL TEMPORARY BRACING, SHORING, AND/OR SUPPORT THAT MAY BE REQUIRED AS THE RESULT OF ERECTOR'S CONSTRUCTION METHODS AND/OR SEQUENCES. THE STRUCTURE IS DESIGNED TO FUNCTION AS A UNIT UPON COMPLETION. THE STRUCTURAL ENGINEER ASSUMES NO LIABILITY FOR THE STRUCTURE DURING ERECTION.
2. NO MODIFICATIONS OR ALTERATIONS (OTHER THAN THOSE SHOWN ON THE DRAWINGS) SHALL BE MADE IN ANY STRUCTURAL MEMBER OR CONNECTION WITHOUT THE WRITTEN APPROVAL OF THE DESIGN ENGINEER.

BOX BOLT HOLE SIZES & INSTALLATION TORQUE:		
BOX BOLT DIA.	HOLE DIA.	INSTALLATION TORQUE
1/4"	7/16"	14 FT-LB
5/16"	9/16"	18 FT-LB
3/8"	3/4"	33 FT-LB
1/2"	13/16"	59 FT-LB
5/8"	1-1/16"	140 FT-LB
3/4"	1-5/16"	221 FT-LB
1. REFER TO BOX BOLT TECHNICAL DATA FOR MORE INFORMATION IF USING BOX BOLTS		

SHACKLE WORKING LOADS	
1/4" GALV.	1.1 KIPS
1/2" GALV.	3.9 KIPS

DEVELOPED BY

ClearSpan

A DIVISION OF
ENGINEERING SERVICES & PRODUCTS CO.

1440 18TH AVENUE SW
DYERSVILLE, IA 52040
P: 563.875.6113
F: 563.875.2317
WWW.ESAPCO.COM

ORDER #:
7888719

CUSTOMER #:
--

CUSTOMER INFORMATION:	STRUCTURE SKU #: T056RKNWF062060	STRUCTURE SIZE: 56' X 60'	STRUCTURE DESCRIPTION:
	CONTACT PHONE: --	SHEET TITLE: GENERAL NOTES	

DRAWING DETAILS

DRAWN BY:
GLB

CREATION DATE:
12/30/2024

REVISIONS:

NO.	BY:	REVISION DATE:
1		
2		
3		
4		

NOT TO SCALE SHEET SIZE: 11X17

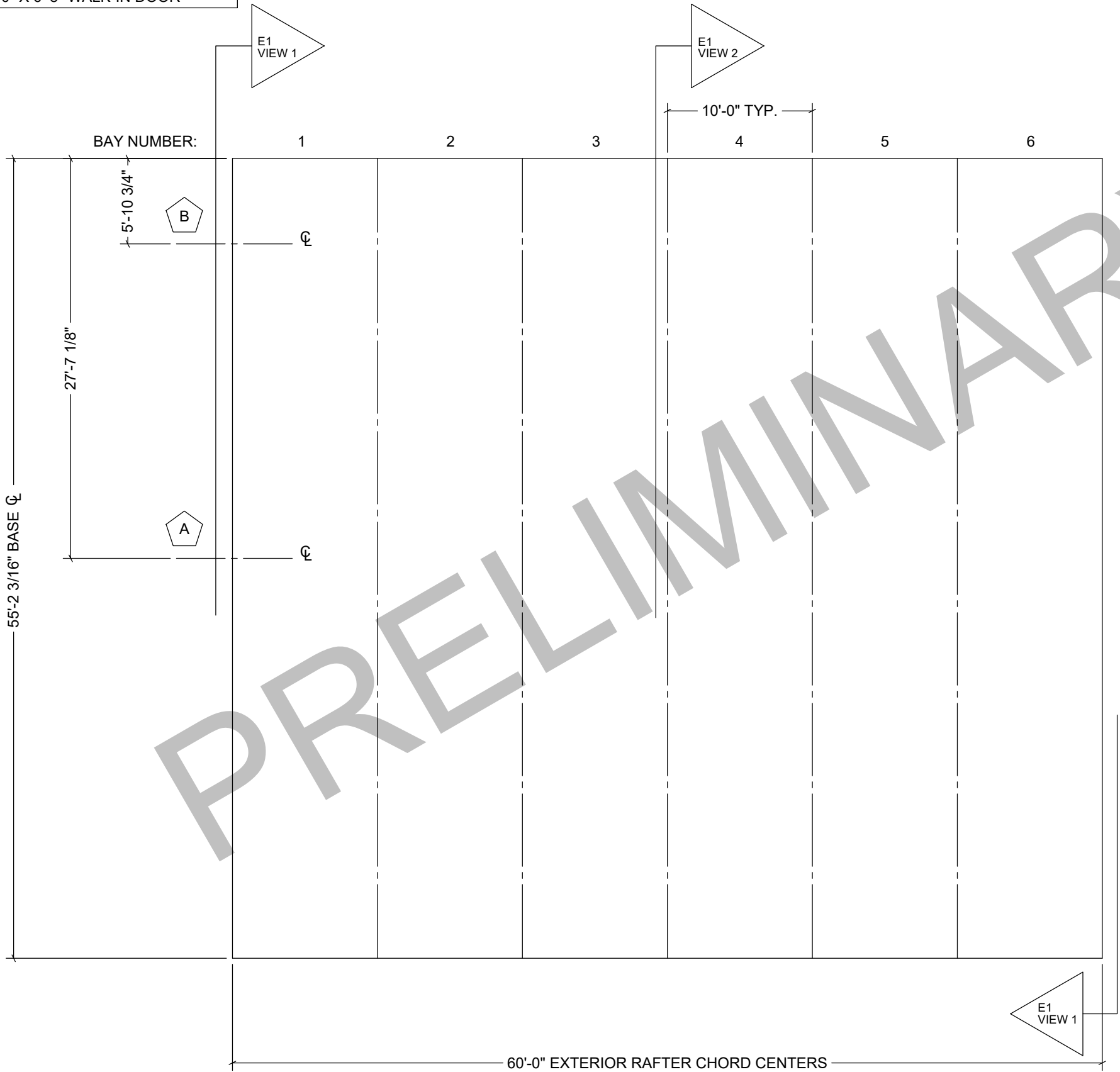
SHEET:
B1

NORTHWEST ENDWALL: EW056RKF0941D
SEE SHEET [L1] FOR ELEVATION VIEW

NOTE: WALK-IN DOOR LOCATIONS ARE APPROXIMATE
AND CAN BE FIELD ADJUSTED AS NEEDED.

DOOR CALL-OUT	DOOR SIZE
A	35'-0" X 20'-0" FABRIC GATHERING DOOR
B	3'-0" X 6'-8" WALK-IN DOOR

NORTHEAST SIDE - SEE SHEET [F1] FOR ELEVATION VIEW



SOUTHWEST SIDE - SEE SHEET [F1] FOR ELEVATION VIEW

SOUTHEAST ENDWALL: EW056RKF0950D
SEE SHEET [M1] FOR ELEVATION VIEW

DEVELOPED BY


A DIVISION OF
ENGINEERING SERVICES & PRODUCTS CO.
1440 18TH AVENUE SW
DYERSVILLE, IA 52040
P: 563.875.6113
F: 563.875.2317
WWW.ESAPCO.COM

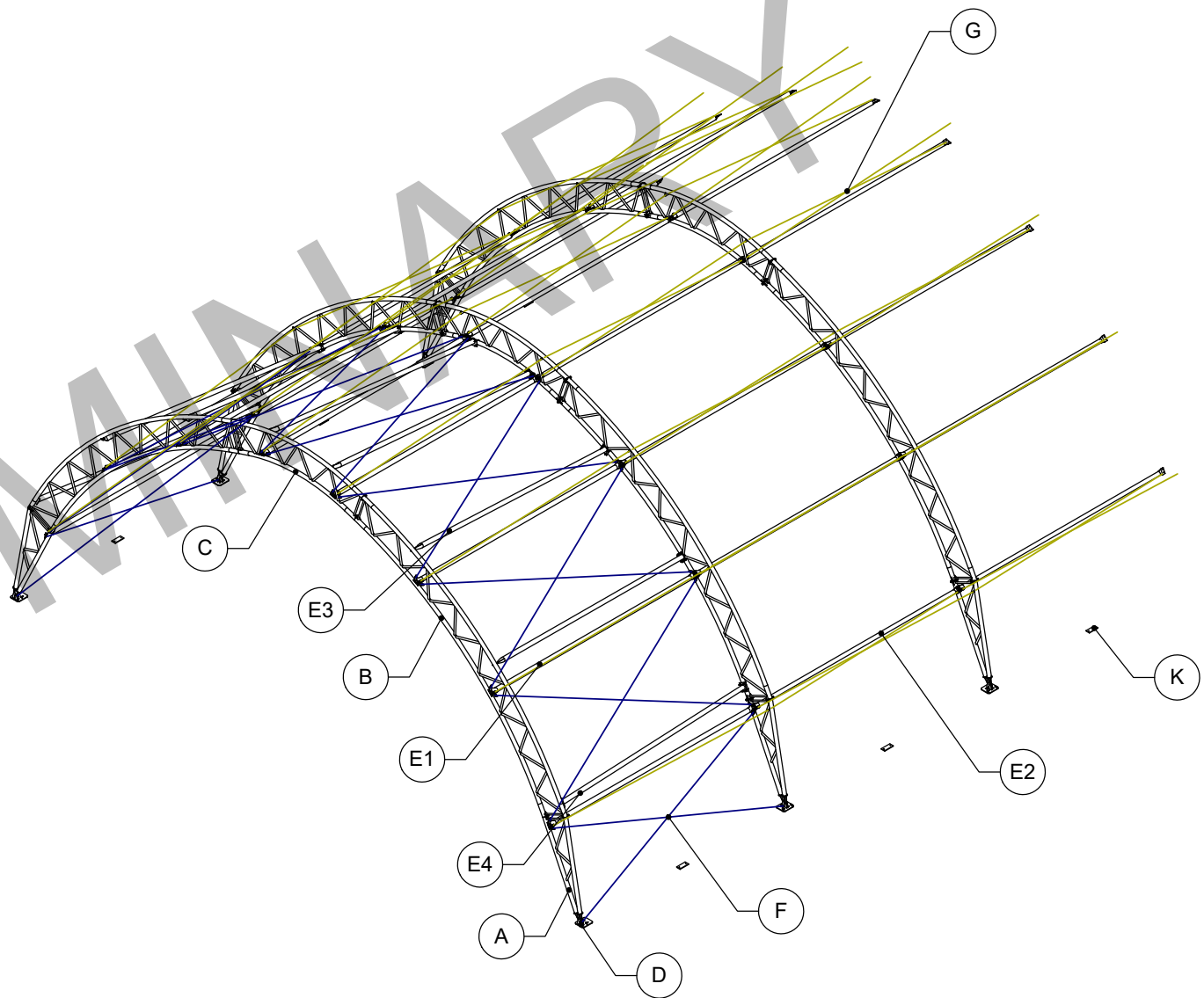
ORDER #:
7888719

CUSTOMER #:
--

CUSTOMER INFORMATION: -- -- --	STRUCTURE SKU #: T056RKMIF062060	STRUCTURE SIZE: 56' X 60'	STRUCTURE DESCRIPTION: --
	CUSTOMER CONTACT: --	CONTACT PHONE: --	
SHEET TITLE: BUILDING PLAN VIEW			

DRAWING DETAILS		
DRAWN BY: GLB		CREATION DATE: 12/30/2024
REVISIONS:		
NO.	BY:	REVISION DATE:
1		
2		
3		
4		
NOT TO SCALE		SHEET SIZE: 11X17
SHEET:		

ITEM	DESCRIPTION	MATERIAL
A	SUPPORT BASE	
	OUTER CHORD	GALV. RND. STEEL TUBE - ϕ 3.5" - 14 GA
	INNER CHORD	GALV. RND. STEEL TUBE - ϕ 3.5" - 11 GA
	WEB (STRAIGHT)	GALV. RND. STEEL TUBE - ϕ 1.25" - 14 GA
	WEB (ANGLED)	GALV. RND. STEEL TUBE - ϕ 1.66" - 14 GA
	CONNECTION PLATES	STEEL PLATE, 1/2" THICK
	GUSSETS	STEEL PLATE, 3/8" THICK
	PIVOT PLATE (CHORD)	STEEL PLATE, 3/8" THICK
B&C	PIVOT PLATE (ROUND)	STEEL PLATE, 1/2" THICK
	SEGMENT	
	OUTER CHORD	GALV. RND. STEEL TUBE - ϕ 3.5" - 11 GA
	INNER CHORD	GALV. RND. STEEL TUBE - ϕ 3.5" - 11 GA
	WEB (STRAIGHT)	GALV. RND. STEEL TUBE - ϕ 1.25" - 14 GA
	WEB (ANGLED)	GALV. RND. STEEL TUBE - ϕ 1.66" - 14 GA
D	CONNECTION PLATES	STEEL PLATE, 1/2" THICK
	GUSSETS	STEEL PLATE, 3/8" THICK
	BASES	
	HORIZONTAL	STEEL PLATE, 1/2" THICK
E	VERTICAL (ROUNDED)	STEEL PLATE, 3/8" THICK
	THREADED STUDS	CFL FULLY THREADED STUD - 1/2"-13 x 1"
	GUSSETS	STEEL PLATE, 3/8" THICK
	BRACING	
E1	LATERAL BRACING (END)	GALV. RND. STEEL TUBE - ϕ 2.875" - 14 GA
E2	LATERAL BRACING (MID)	GALV. RND. STEEL TUBE - ϕ 2.875" - 14 GA
E3	ANGLED BRACE	GALV. RND. STEEL TUBE - ϕ 3.50" - 14 GA
E4	BOTTOM ANGLED BRACE	GALV. RND. STEEL TUBE - ϕ 3.50" - 14 GA
F	THREADED STUD PLATE	1/4" PLATE W/ 1/2" X 2" STUDS
	CABLE ASSEMBLY	SEE SHEET G3
G	CABLE CONNECTION PLATE	STEEL PLATE, 5/16" THICK
	SWAY CABLE ASSEMBLY	SEE SHEET G3
H	CABLE CONNECTION PLATE	STEEL PLATE, 1/8" THICK
	BRACE PLATES	
J	SUPPORT BASE TO SEGMENT	STEEL PLATE, 1/8" THICK
	SEGMENT TO SEGMENT	STEEL PLATE, 1/8" THICK
J	WINCH ASSEMBLY	
	WINCH	2" LASHING WINCH (10,000 LBS. STRENGTH)
	STRAP	2" STRAP (10,000 LBS. STRENGTH)
K	WINCH PLATE	
	HORIZONTAL	STEEL PLATE, 1/2" THICK
	THREADED STUDS	CFL FULLY THREADED STUD - 1/2"-13 x 1"



NOTE: THIS VIEW IS GENERIC TO ILLUSTRATE LOCATIONS OF ITEMS IN THE TABLE ONLY. CABLE PATTERN AND/OR OTHER DETAILS MAY NOT FULLY MATCH THE SPECIFICS FOR THIS ORDER. SEE OTHER SHEETS FOR ORDER-SPECIFIC DETAILS.

DEVELOPED BY



A DIVISION OF
ENGINEERING SERVICES & PRODUCTS CO.

1440 18TH AVENUE SW
DYERSVILLE, IA 52040
P: 563.875.6113
F: 563.875.2317
WWW.ESAPCO.COM

ORDER #:
7888719

CUSTOMER #:
--

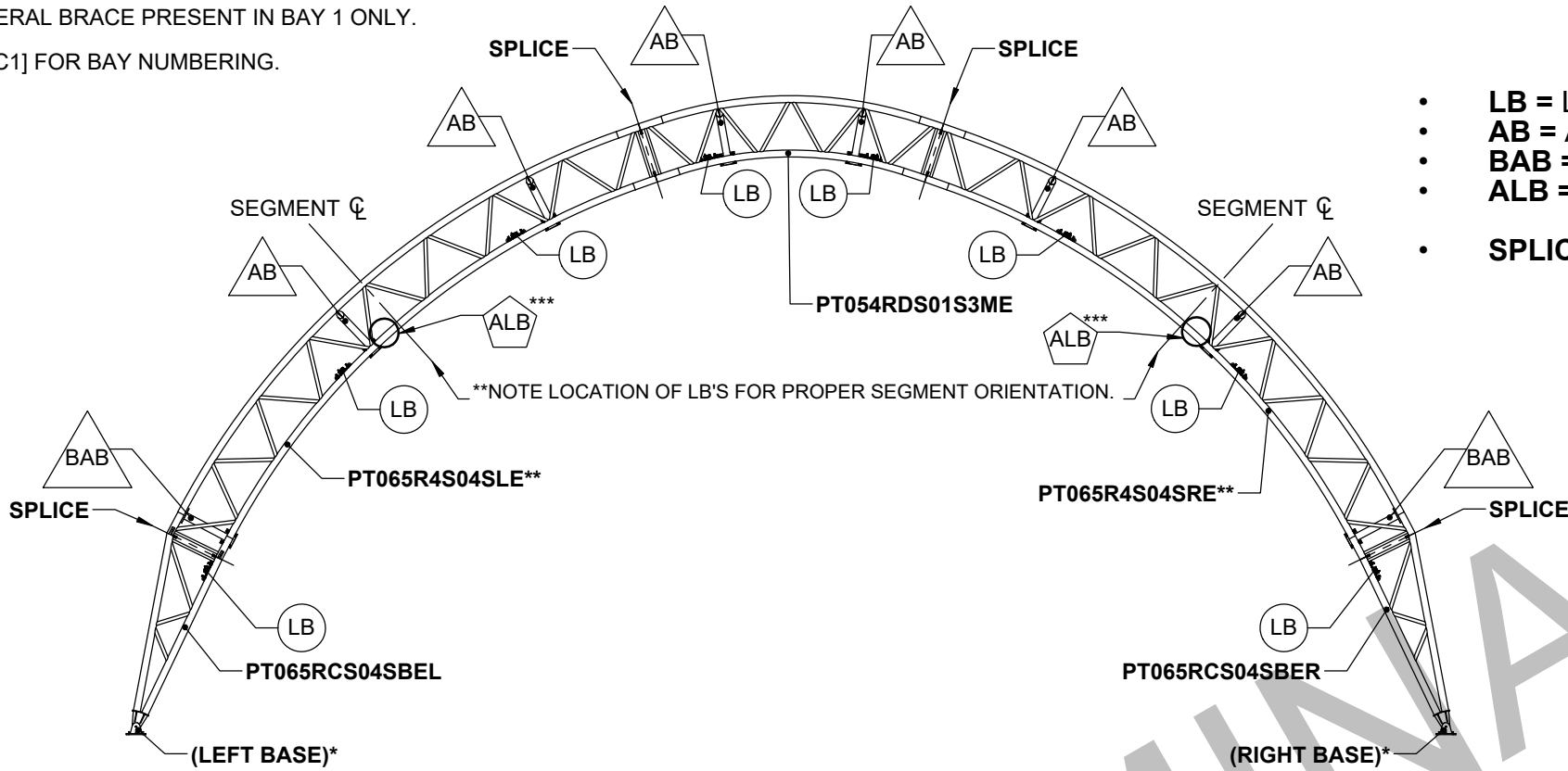
STRUCTURE SKU #: T056RKMIF062060	STRUCTURE SIZE: 56' X 60'	STRUCTURE DESCRIPTION: --
CUSTOMER INFORMATION: --	CONTACT PHONE: --	SHEET TITLE: MATERIAL SPECIFICATIONS

DRAWING DETAILS		
DRAWN BY: GLB	CREATION DATE: 12/30/2024	
REVISIONS:		
NO.	BY:	REVISION DATE:
1		
2		
3		
4		
NOT TO SCALE		SHEET SIZE: 11X17
SHEET: D1		

*NOTE: REFER TO SHEET [H1] FOR END RAFTER BASE SKU

***NOTE: ADDITIONAL LATERAL BRACE PRESENT IN BAY 1 ONLY.

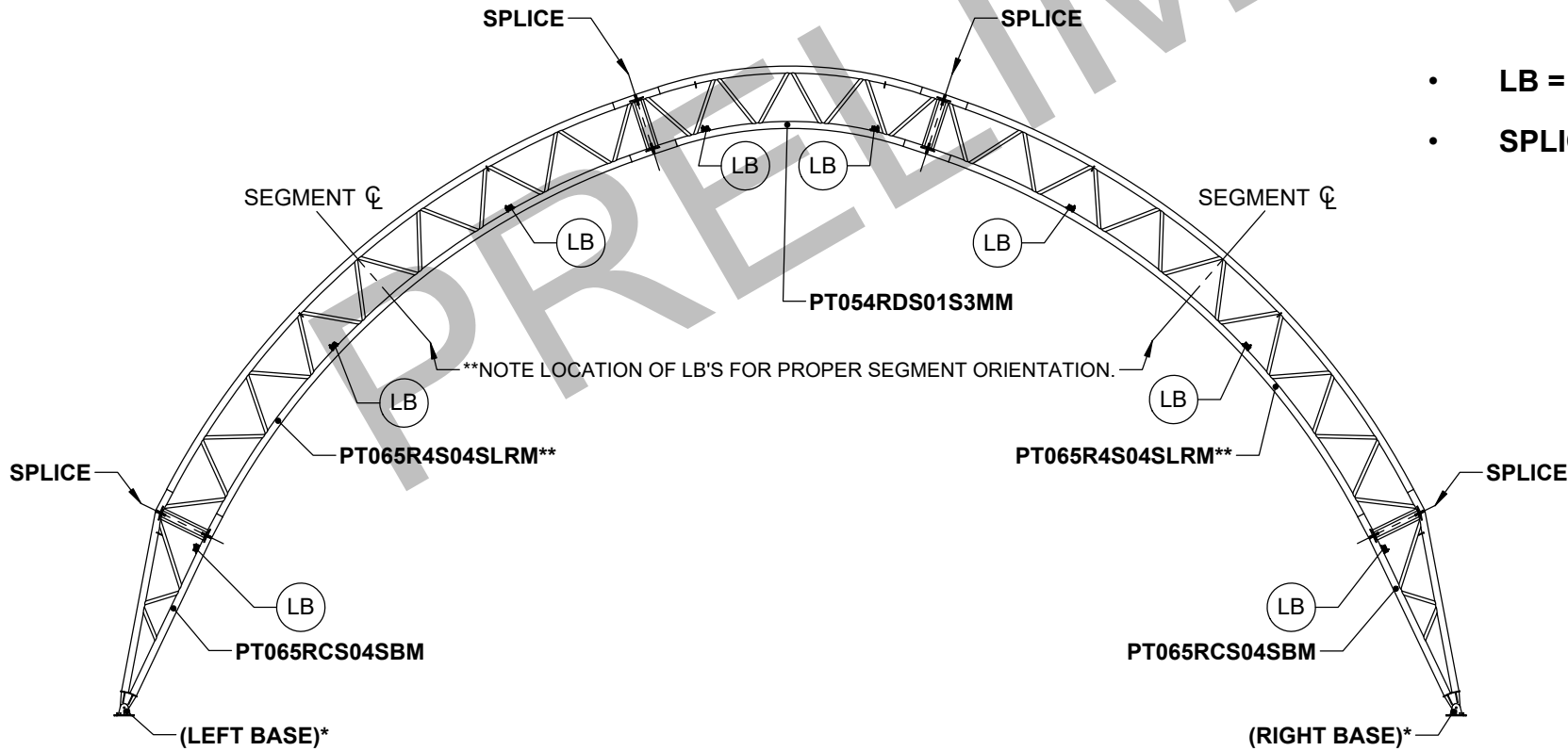
NOTE: REFER TO SHEET [C1] FOR BAY NUMBERING.



[E1] VIEW 1 - PROFILE (END RAFTER)

- **LB** = LATERAL BRACE (SKU: **LB28G14STL120**)
- **AB** = ANGLED BRACE (SKU: **AB35G14BNL120**)
- **BAB** = BOTTOM ANGLE BRACE (SKU: **AB35G14AEL120**)
- **ALB** = ADDITIONAL LATERAL BRACE (SKU: **LB35G14STL120**)
- **SPLICE**: SEE DETAIL SHEET [G2]

*NOTE: REFER TO SHEET [H1] FOR MID RAFTER BASE SKU



[E1] VIEW 2 - PROFILE (MID RAFTER)

- **LB** = LATERAL BRACE (SKU: **LB28G14STL120**)
- **SPLICE**: SEE DETAIL SHEET [G2]

DEVELOPED BY

ClearSpan

A DIVISION OF
ENGINEERING SERVICES & PRODUCTS CO.

1440 18TH AVENUE SW
DYERSVILLE, IA 52040
P: 563.875.6113
F: 563.875.2317
WWW.ESAPCO.COM

ORDER #:
7888719

CUSTOMER #:
--

CUSTOMER INFORMATION:	STRUCTURE SKU #: T056RKNIF062060	STRUCTURE SIZE: 56' X 60'	STRUCTURE DESCRIPTION:
	CONTACT PHONE: --	CUSTOMER CONTACT:	SHEET TITLE: RAFTER PROFILES

DRAWING DETAILS			
DRAWN BY: GLB		CREATION DATE: 12/30/2024	
REVISIONS:			
NO.	BY:	REVISION DATE:	
1			
2			
3			
4			
NOT TO SCALE		SHEET SIZE: 11X17	
SHEET:			
E1			

NOTE: REFER TO SHEET [E1] FOR PROFILE OF BRACE LOCATIONS
& SHEET [C1] FOR PLAN VIEW OF DOOR LOCATIONS (IF APPLICABLE).

DEVELOPED BY

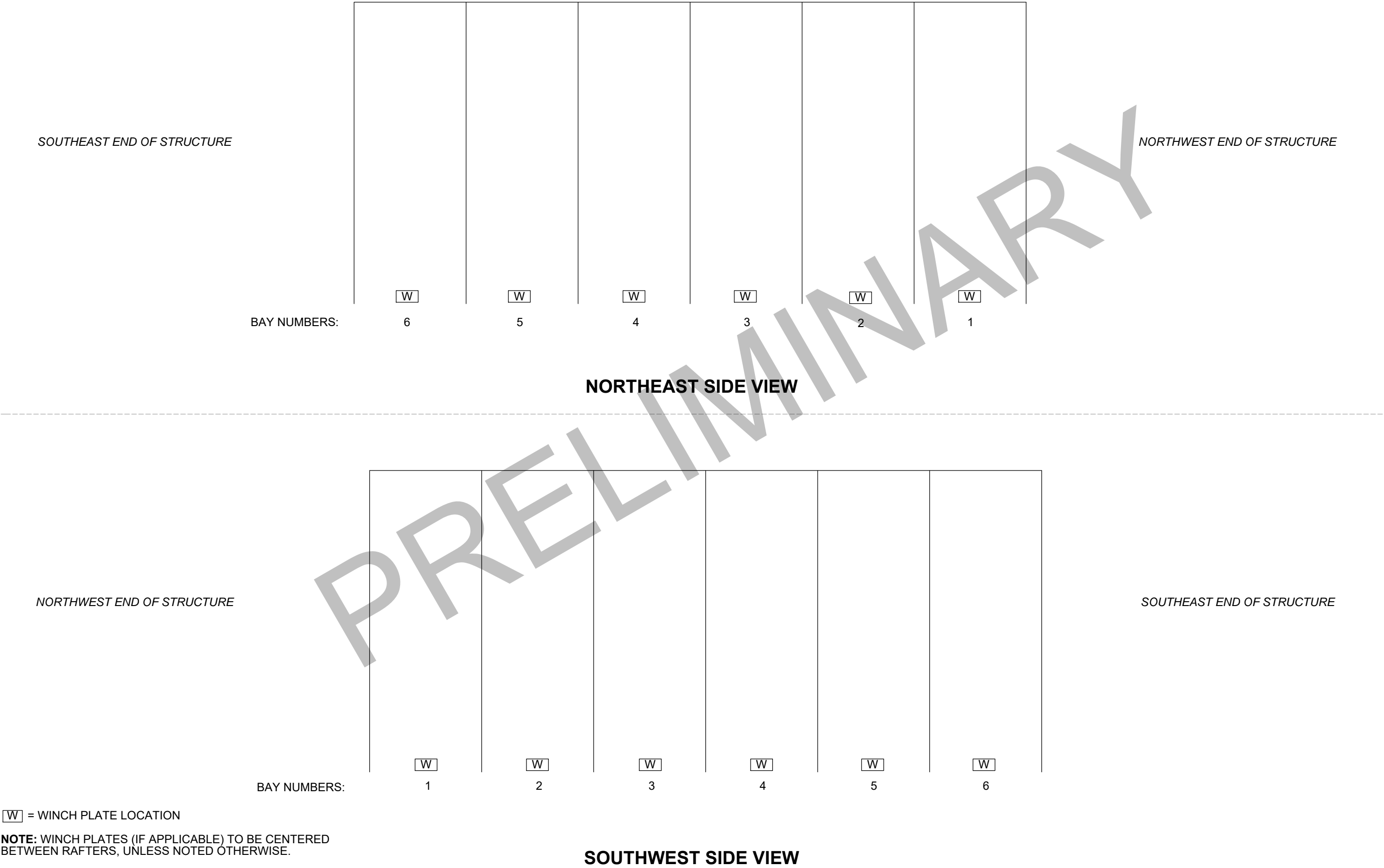
ClearSpan

A DIVISION OF
ENGINEERING SERVICES & PRODUCTS CO.

1440 18TH AVENUE SW
DYERSVILLE, IA 52040
P: 563.875.6113
F: 563.875.2317
WWW.ESAPCO.COM

ORDER #:
7888719

CUSTOMER #:
--



W

 = WINCH PLATE LOCATION

NOTE: WINCH PLATES (IF APPLICABLE) TO BE CENTERED
BETWEEN RAFTERS, UNLESS NOTED OTHERWISE.

STRUCTURE SKU #:
T056RKMIF062060

STRUCTURE SIZE:
56' X 60'

STRUCTURE DESCRIPTION:
--

CUSTOMER INFORMATION:
--

CONTACT PHONE:
--

CUSTOMER CONTACT:
--

SHEET TITLE:
SIDE PROFILES

DRAWING DETAILS

DRAWN BY:
GLB

CREATION DATE:
12/30/2024

REVISIONS:

NO.

BY:

REVISION DATE:

1

2

3

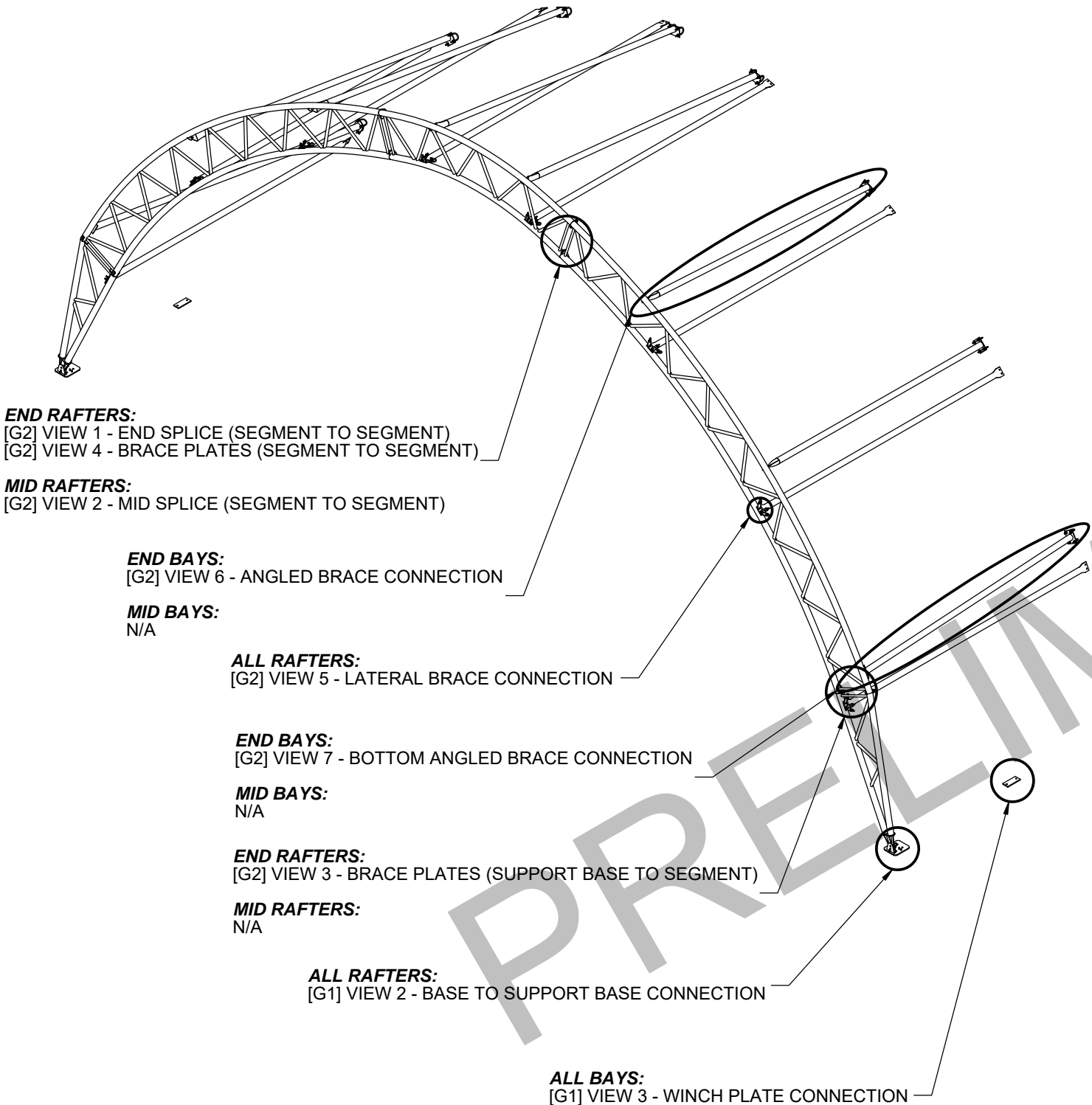
4

NOT TO SCALE

SHEET SIZE: 11X17

SHEET:
F1

DETAIL LOCATION CALL-OUTS

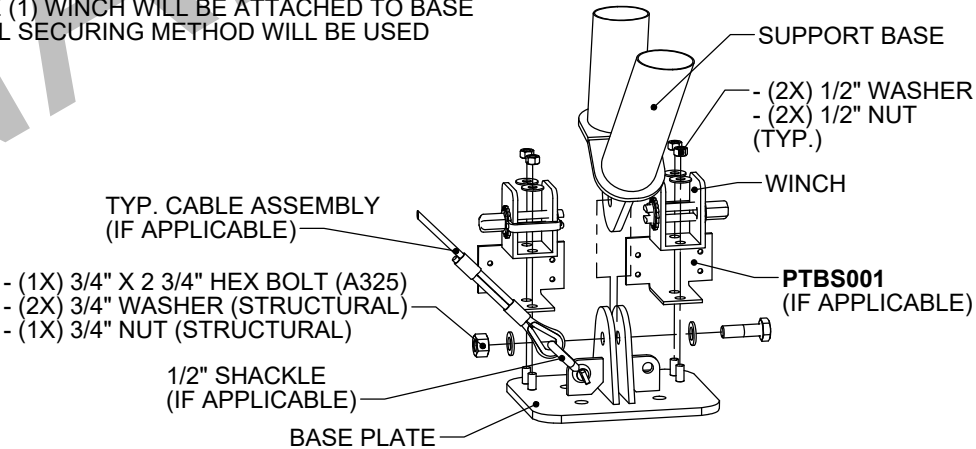


DETAILS WITH LOCATION CALL-OUTS NOT SHOWN ON THIS SHEET:

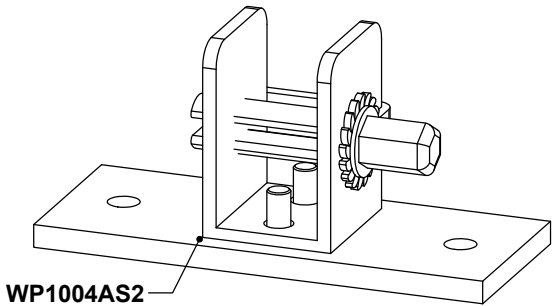
- [G2] VIEW 8 - ADDITIONAL LATERAL BRACE CONNECTION
- [G3] VIEW 1 - CABLE SKU PER SPAN
- [G3] VIEW 2 - TYPICAL CABLE CONNECTION DETAIL
- [G3] VIEW 3 - TYPICAL CABLE ASSEMBLY
- [G3] VIEW 4 - SWAY CABLE LOCATIONS
- [G3] VIEW 5 - SWAY CABLE DETAILS
- [G3] VIEW 6 - TYPICAL SWAY CABLE ASSEMBLY

[G1] VIEW 1 - NOT USED

NOTE: IF COVER IS TO BE INSTALLED USING ONLY THE POCKET ABOVE THE BASE FOR TENSIONING, TWO (2) WINCHES WILL BE USED AS SHOWN. IF COVER IS TO BE INSTALLED USING BOTH THE POCKET ABOVE AND THE POCKET BELOW THE BASE FOR TENSIONING, ONLY ONE (1) WINCH WILL BE ATTACHED TO BASE AND ONE (1) ADDITIONAL SECURING METHOD WILL BE USED BELOW BASE.



[G1] VIEW 2 - BASE TO SUPPORT BASE CONNECTION



[G1] VIEW 3 - WINCH PLATE CONNECTION

DEVELOPED BY

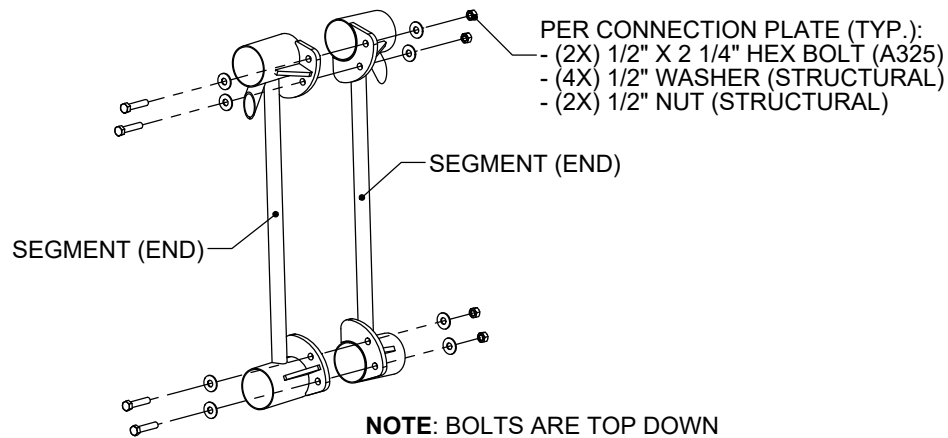
A DIVISION OF
ENGINEERING SERVICES & PRODUCTS CO.
1440 18TH AVENUE SW
DYERSVILLE, IA 52040
P: 563.875.6113
F: 563.875.2317
WWW.ESAPCO.COM

ORDER #:
7888719

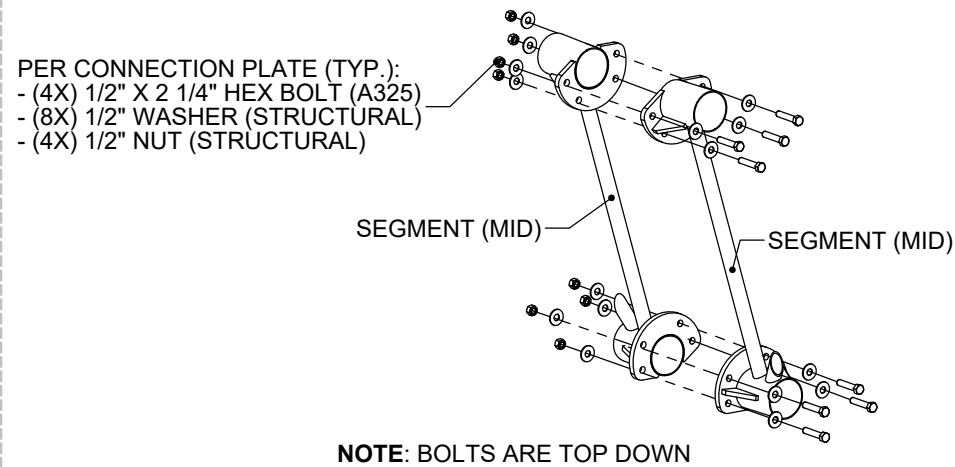
CUSTOMER #:
--

CUSTOMER INFORMATION:	STRUCTURE SKU #: T056RKNIF062060	STRUCTURE SIZE: 56' X 60'	STRUCTURE DESCRIPTION:
	DETAIL LOCATIONS & BASE DETAILS		
CONTACT PHONE: --		CUSTOMER CONTACT: --	

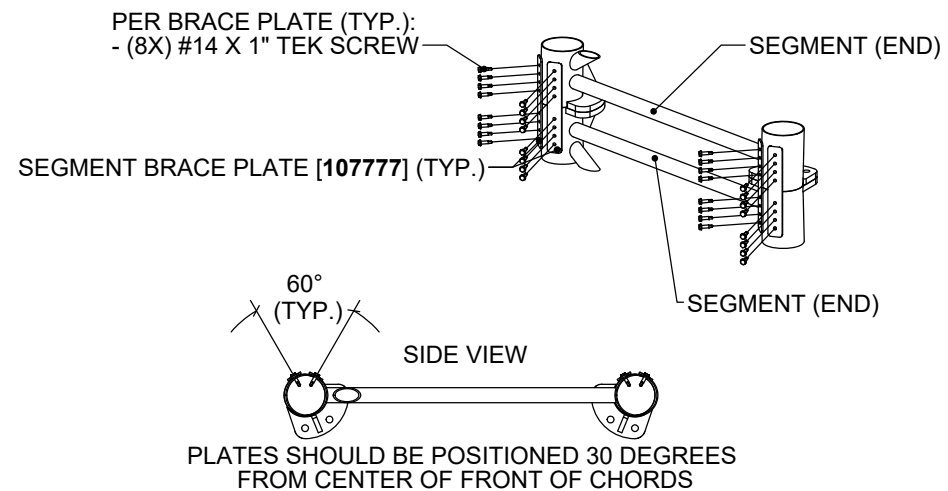
DRAWING DETAILS		
DRAWN BY: GLB		CREATION DATE: 12/30/2024
REVISIONS:		
NO.	BY:	REVISION DATE:
1		
2		
3		
4		
NOT TO SCALE		SHEET SIZE: 11X17
SHEET:		



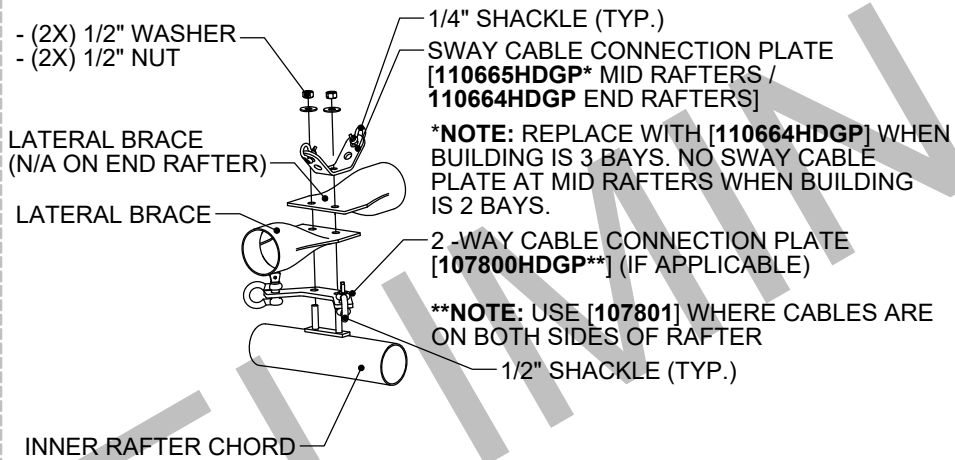
[G2] VIEW 1 - END SPLICE
(SEGMENT TO SEGMENT)



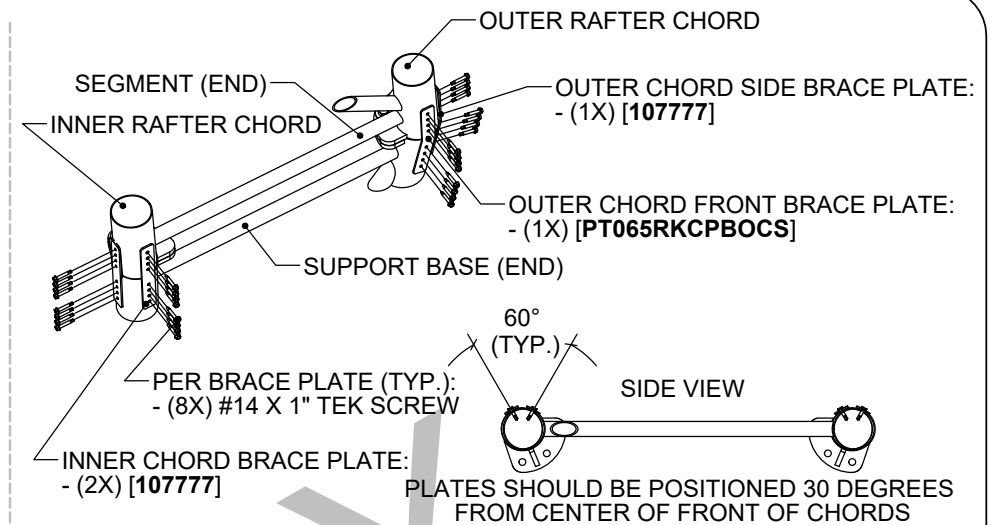
[G2] VIEW 2 - MID SPLICE
(SEGMENT TO SEGMENT)



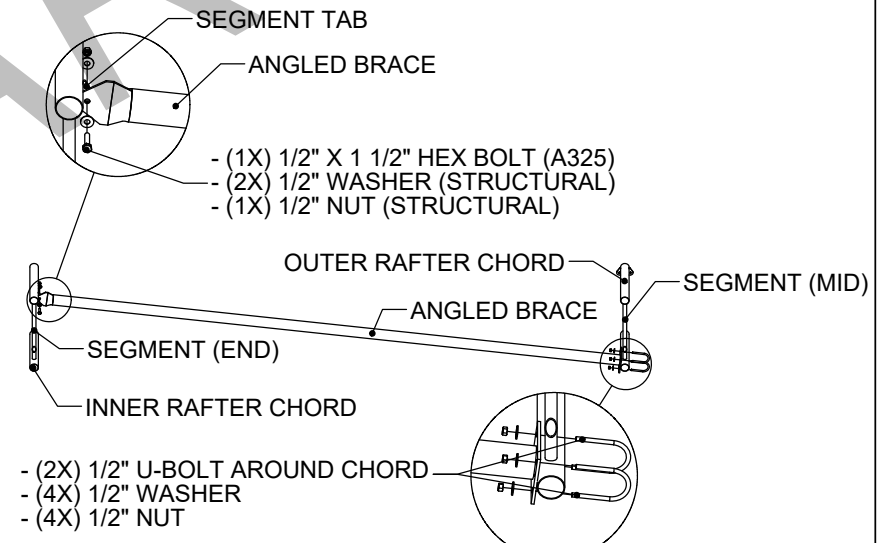
[G2] VIEW 4 - BRACE PLATES
(SEGMENT TO SEGMENT)



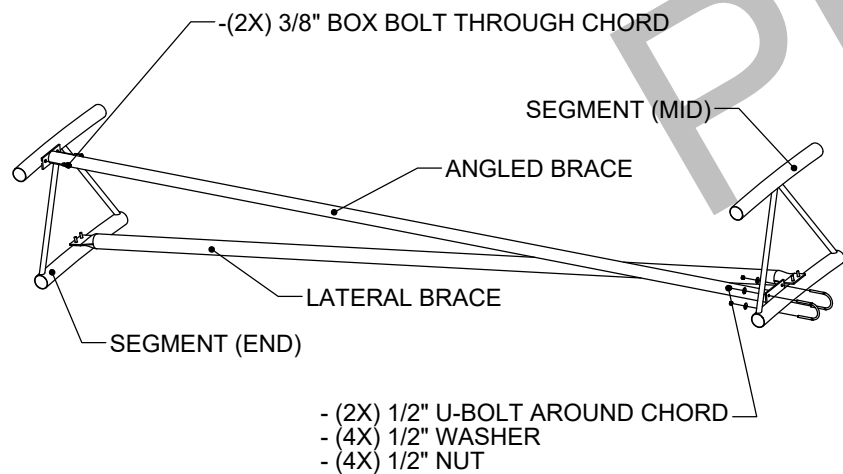
[G2] VIEW 5 - LATERAL BRACE
CONNECTION



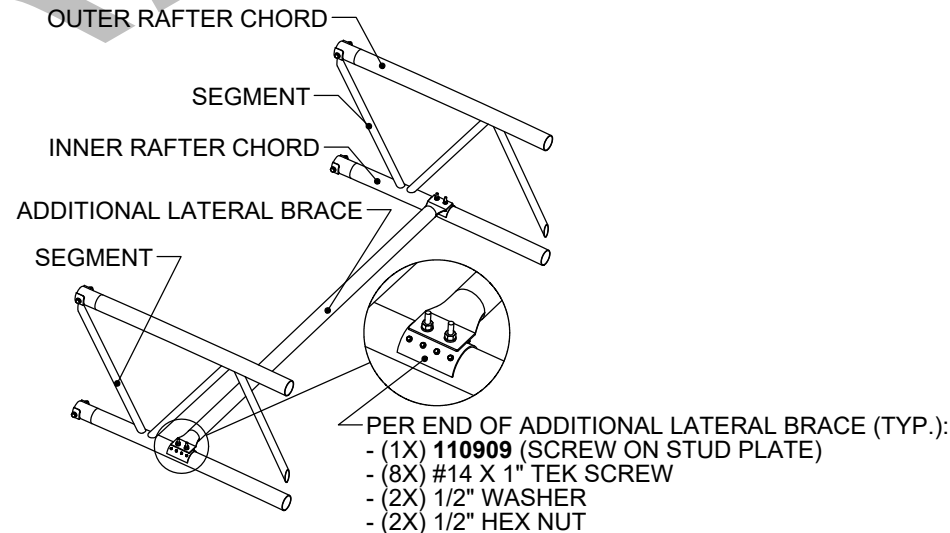
[G2] VIEW 3 - BRACE PLATES
(SUPPORT BASE TO SEGMENT)



[G2] VIEW 6 - ANGLED BRACE
CONNECTION



[G2] VIEW 7 - BOTTOM ANGLED BRACE
CONNECTION



[G2] VIEW 8 - ADDITIONAL LATERAL
BRACE CONNECTION

CUSTOMER INFORMATION:	STRUCTURE SKU #: T056RKNWF062060	STRUCTURE SIZE: 56' X 60'	STRUCTURE DESCRIPTION:
	CONTACT PHONE: --	SHEET TITLE: GENERAL CONNECTION DETAILS	

DRAWING DETAILS			
DRAWN BY: GLB		CREATION DATE: 12/30/2024	
REVISIONS:			
NO.	BY:	REVISION DATE:	
NOT TO SCALE		SHEET SIZE: 11X17	
SHEET:			

NOTES:

- RAFTER VIEW SHOWN REPRESENTS TYPICAL CABLE SPAN LABELS TO ILLUSTRATE LOCATIONS OF SPANS IN THE TABLE. THE CABLE PATTERN SHOWN MAY NOT FULLY MATCH THE SPECIFICS FOR THIS PROJECT.
- CABLE PATTERN REPEATS ON OPPOSITE SIDE OF ϕ UNLESS NOTED OTHERWISE.
- CABLE IS NOT PRESENT IN BAY NUMBERS NOT LISTED IN TABLE.

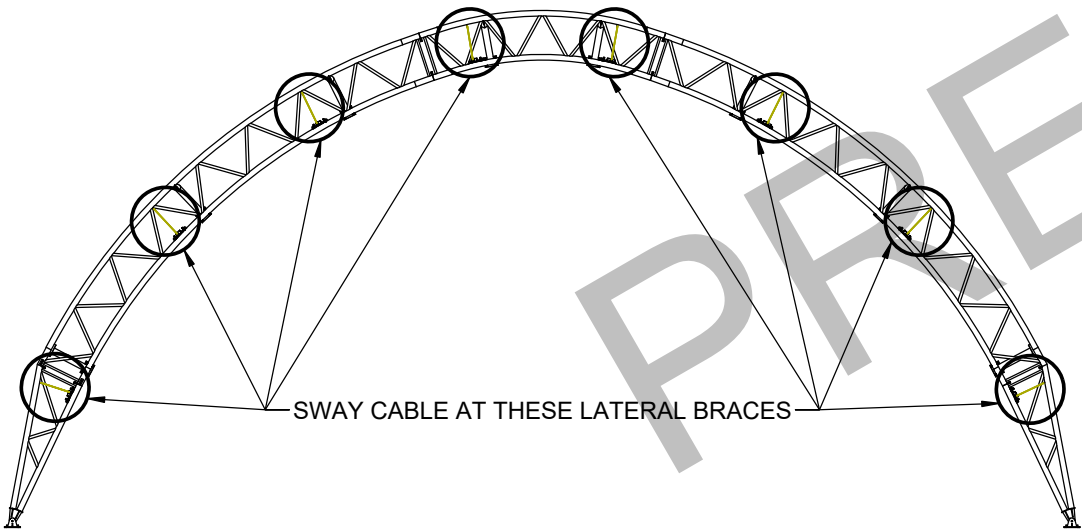
CABLE ATTACHMENT COMPONENTS	
TURNBUCKLE	1/2" X 12" GALV E-E
SHACKLE	1/2" GALV
CABLE	3/8" GALV 7X19

*REFER TO SHEET [C1] FOR BAY NUMBERING

CABLE ASSEMBLY SKU'S					
BAY NUMBER*	SPAN 'A'	SPAN 'B'	SPAN 'C'	SPAN 'D'	SPAN 'E'
1 & 6	CAB37G0901	CAB37G1008	CAB37G1000	CAB37G0908	CAB37G0808
2 & 5	CAB37G0901	CAB37G1008	N/A	N/A	N/A

[G3] VIEW 1 - CABLE SKU PER SPAN

SWAY CABLE REPEATS DOWN LENGTH OF BUILDING AT LOCATIONS SHOWN BELOW

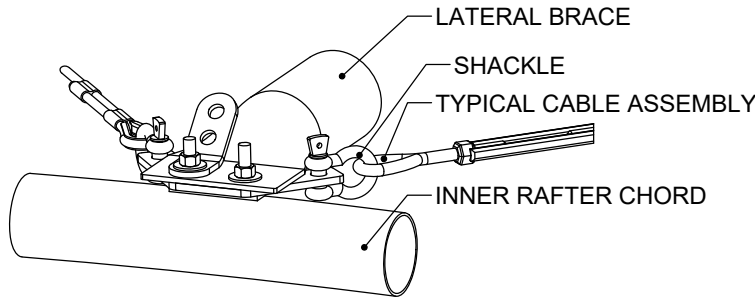
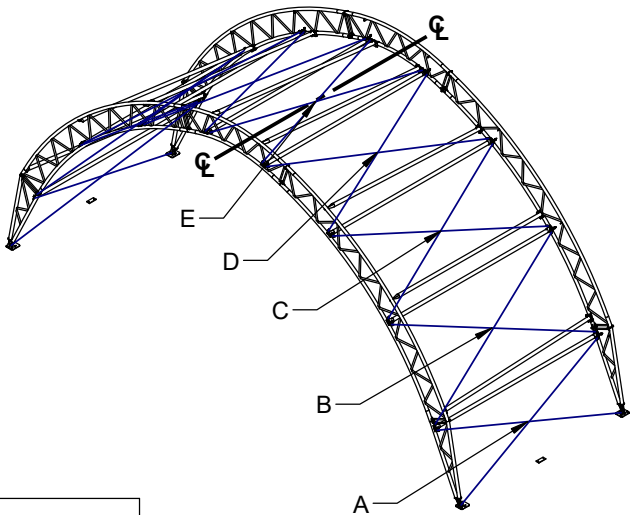


CABLE ATTACHMENT COMPONENTS	
TURNBUCKLE	1/2" X 6" GALV J-J
SHACKLE	1/4" GALV
CABLE	3/16" GALV 7X19

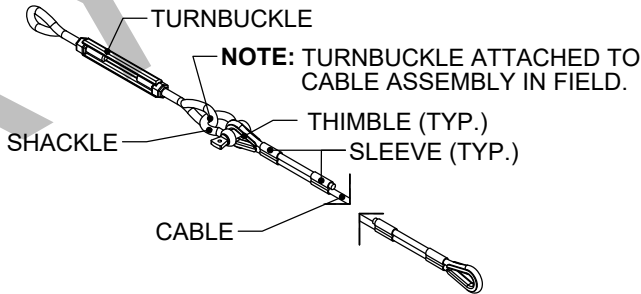
*REFER TO SHEET [C1] FOR BAY NUMBERING

SWAY CABLE ASSEMBLY SKU'S	
BAY NUMBER*	SWAY CABLE SKU
1 - 6	CAB18G0804

[G3] VIEW 4 - SWAY CABLE LOCATIONS



[G3] VIEW 2 - TYPICAL CABLE CONNECTION DETAIL



[G3] VIEW 3 - TYPICAL CABLE ASSEMBLY

SWAY CABLE ASSEMBLY

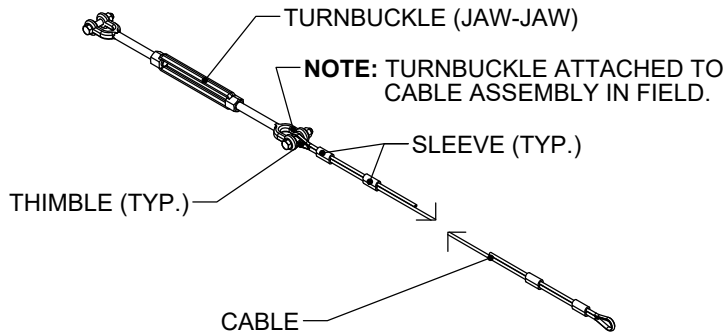
NOTE: NO SWAY CABLE FROM TOP CHORD OF END RAFTERS DUE TO ANGLED BRACE.

110665HDGP SHOWN
NOTE: USE [110664HDGP] WITH CABLES IN ONE DIRECTION.

SHACKLE (TYP.)

LATERAL BRACE

[G3] VIEW 5 - SWAY CABLE DETAILS



[G3] VIEW 6 - TYPICAL SWAY CABLE ASSEMBLY

DEVELOPED BY

ClearSpan

A DIVISION OF

ENGINEERING SERVICES & PRODUCTS CO.

1440 18TH AVENUE SW
DYERSVILLE, IA 52040
P: 563.875.6113
F: 563.875.2317
WWW.ESAPCO.COM

ORDER #:

7888719

CUSTOMER #:

--

STRUCTURE SKU #: T056RKNWF062060	STRUCTURE SIZE: 56' X 60'	STRUCTURE DESCRIPTION: --
CUSTOMER INFORMATION: --	CONTACT PHONE: --	SHEET TITLE: CABLE LAYOUT & DETAILS

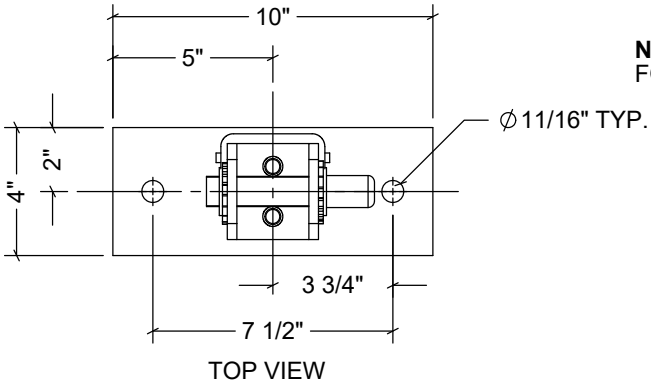
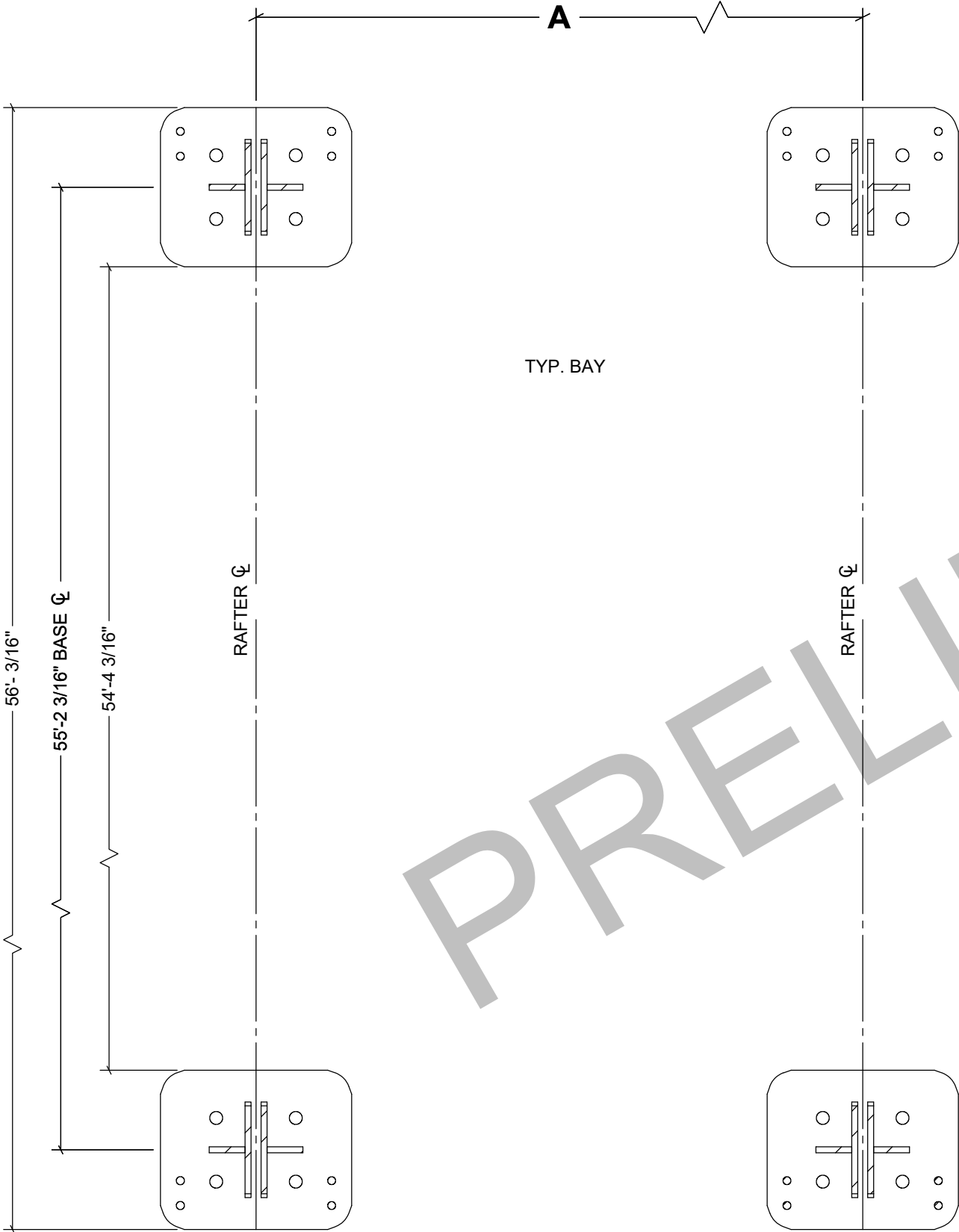
DRAWING DETAILS		
DRAWN BY: GLB	CREATION DATE: 12/30/2024	
REVISIONS:		
NO.	BY:	REVISION DATE:
1		
2		
3		
4		
NOT TO SCALE		SHEET SIZE: 11X17
SHEET:		G3

*REFER TO SHEET [C1] FOR BAY NUMBERING

BAY NUMBER*	A (RAFTER SPACING)
1 - 6	10'-0"

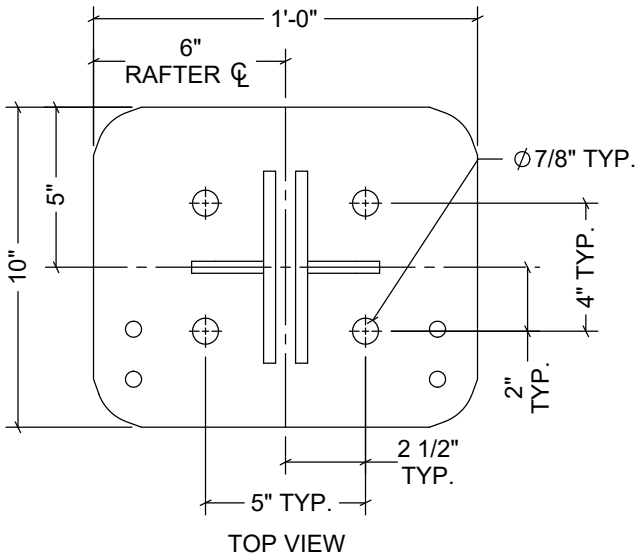
**REFER TO SHEET [E1] FOR BASE LOCATIONS

RAFTER TYPE	LEFT BASE SKU**	RIGHT BASE SKU**
END	BP061MP	BP061MP
MID	BP061MP	BP061MP



NOTE: REFER TO SHEET [F1] FOR WINCH PLATE LOCATIONS.

WP1004AS2 DETAILS



BP061MP DETAILS

DEVELOPED BY

A DIVISION OF
ENGINEERING SERVICES & PRODUCTS CO.
1440 18TH AVENUE SW
DYERSVILLE, IA 52040
P: 563.875.6113
F: 563.875.2317
WWW.ESAPCO.COM

ORDER #:
7888719

CUSTOMER #:
--

CUSTOMER INFORMATION: --	STRUCTURE SKU #: T056RKNWF062060	STRUCTURE SIZE: 56' X 60'	STRUCTURE DESCRIPTION: --
	CONTACT PHONE: --	SHEET TITLE: BASE PLATE LAYOUT & DETAILS	

DRAWING DETAILS		
DRAWN BY: GLB		CREATION DATE: 12/30/2024
REVISIONS:		
NO.	BY:	REVISION DATE:
1		
2		
3		
4		
NOT TO SCALE		SHEET SIZE: 11X17
SHEET:		

FOUNDATION NOTES:

- CLEARSPAN DOES NOT PROVIDE ANY MATERIAL OR DESIGN CRITERIA FOR THE CREATION OF THE FOUNDATION OR ANCHORING OF THIS BUILDING, UNLESS OTHERWISE NOTED.
- FOUNDATION AND ANCHORING SHALL BE ENGINEERED AND APPROVED BY A LICENSED STRUCTURAL ENGINEER OF OWNER'S CHOICE.
- FOUNDATION MUST MEET THE BUILDING REACTION DATA SHOWN BELOW.
- SEE ENDWALL DRAWINGS FOR ENDWALL REACTIONS (IF APPLICABLE).

NO ENGINEERING REQUIRED, REACTIONS NOT PROVIDED

DEVELOPED BY

ClearSpan

A DIVISION OF
ENGINEERING SERVICES & PRODUCTS CO.

1440 18TH AVENUE SW
DYERSVILLE, IA 52040
P: 563.875.6113
F: 563.875.2317
WWW.ESAPCO.COM

ORDER #:

7888719

CUSTOMER #:

--

CUSTOMER INFORMATION: -- -- --	STRUCTURE SKU #: T056RKMIF062060	STRUCTURE SIZE: 56' X 60'	STRUCTURE DESCRIPTION: --
	CUSTOMER CONTACT: --	CONTACT PHONE: --	SHEET TITLE: BUILDING REACTION DATA

DRAWING DETAILS		
DRAWN BY: GLB		CREATION DATE: 12/30/2024
REVISIONS:		
NO.	BY:	REVISION DATE:
1		
2		
3		
4		
NOT TO SCALE		SHEET SIZE: 11X17
SHEET:		
J1		