



Legal Claim Description

Ajax 1 Placer Claim

EXHIBIT A - Legal Description and Location Map

The said placer Mining Claim is located in the following Half Section(s), Quarter-Section(s), Section(s), Township(s), Range(s) and Meridian:

¼ Section	Section	Township	Range	Meridian
(DISCOV) NW ¼ SE ¼	027	002S	0730W	6th PM
(NW CRNR 1) NW ¼ NE ¼	027	002S	0730W	6th PM
(NE CRNR 2) NW ¼ NE ¼	027	002S	0730W	6th PM
(SE CRNR 3) SW ¼ NE ¼	027	002S	0730W	6th PM
(SW CRNR 4)SW ¼ NE ¼	027	002S	0730W	6th PM

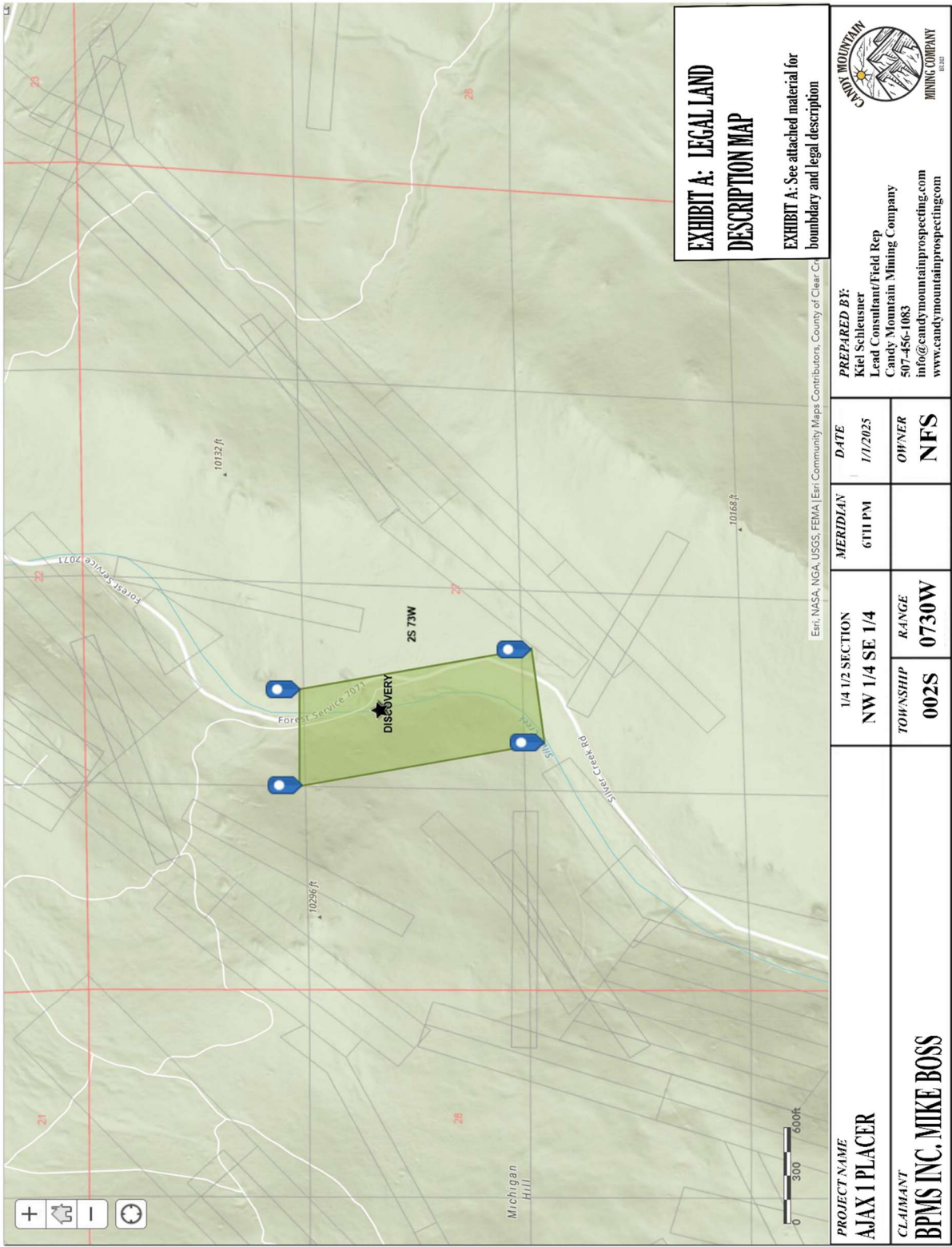
The NW corner monument of said Placer mining claim is located 1,807 Ft 35 degrees East-Southeast from the corner of the NW corner of Section 30 at the NW tie in point. NW Corner Monument #1 is located in Section 30 in Township 002S, Range 0730W, 6th Prime Meridian. Going 660 feet East 87 degrees from NW Corner Monument #1 to NE Corner Monument #2, Then South 20 degrees 1320 feet to SE Corner Monument #3, Then heading 85 degrees West 660 feet to SW Corner Monument #4, from SW Corner Monument #4 heading North 10 degrees 1320 feet returning to NW Corner Monument #1

The described placer mining claim is roughly 1,320 feet long by 660 feet wide on the South and East claim boundaries, and 1320 feet in length along the Northern claim boundary and the West boundary being 660 feet on a compass heading direction of NNW 10 degrees.

The surface claims 477.10 feet in a north direction and 842.90 feet in a south direction from the discovery point at which this Location Notice is posted with 219.9 feet to the East and 440.10 feet in the West direction of the discovery point. The general course of the placer deposits is by compass heading direction North 360 degrees.

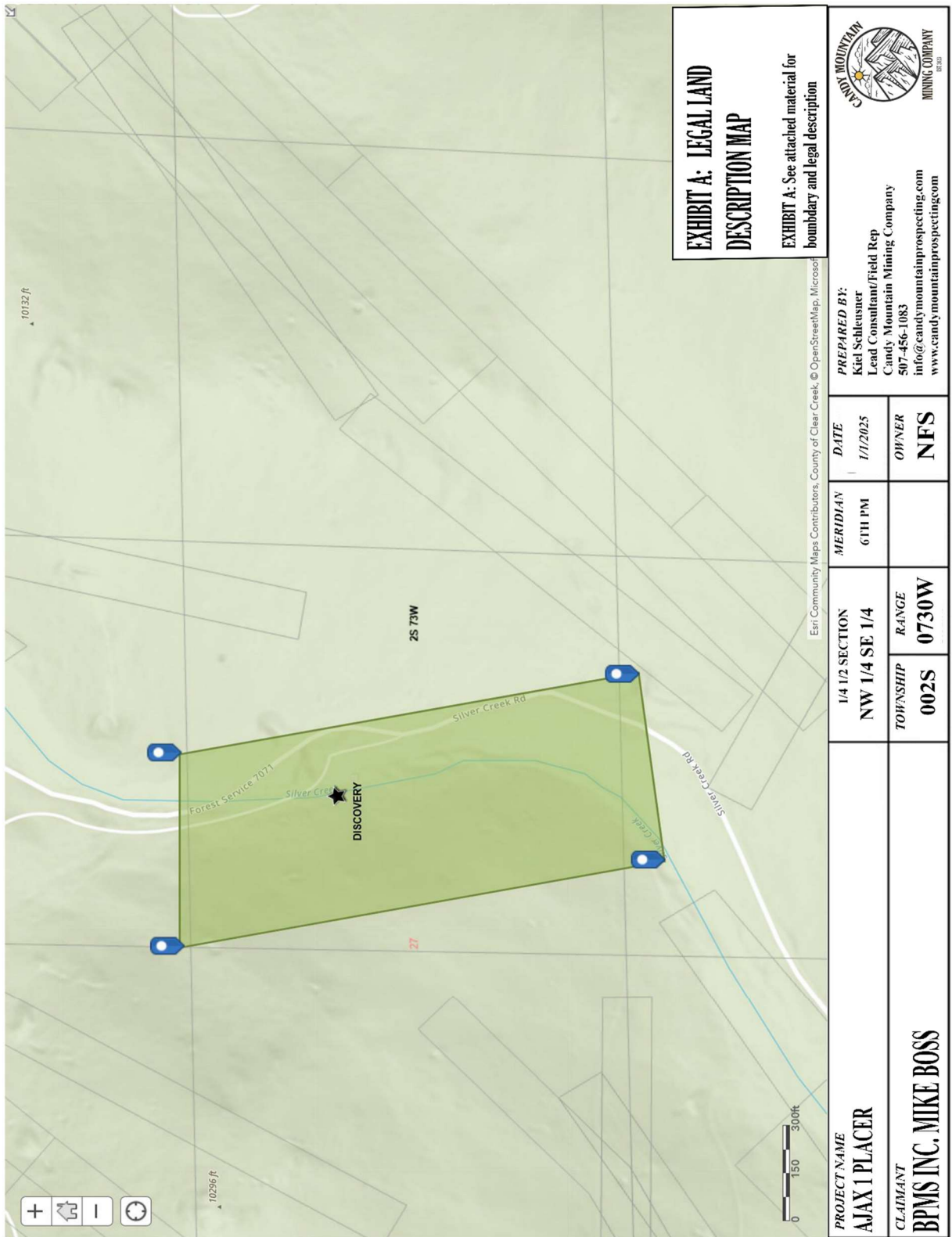


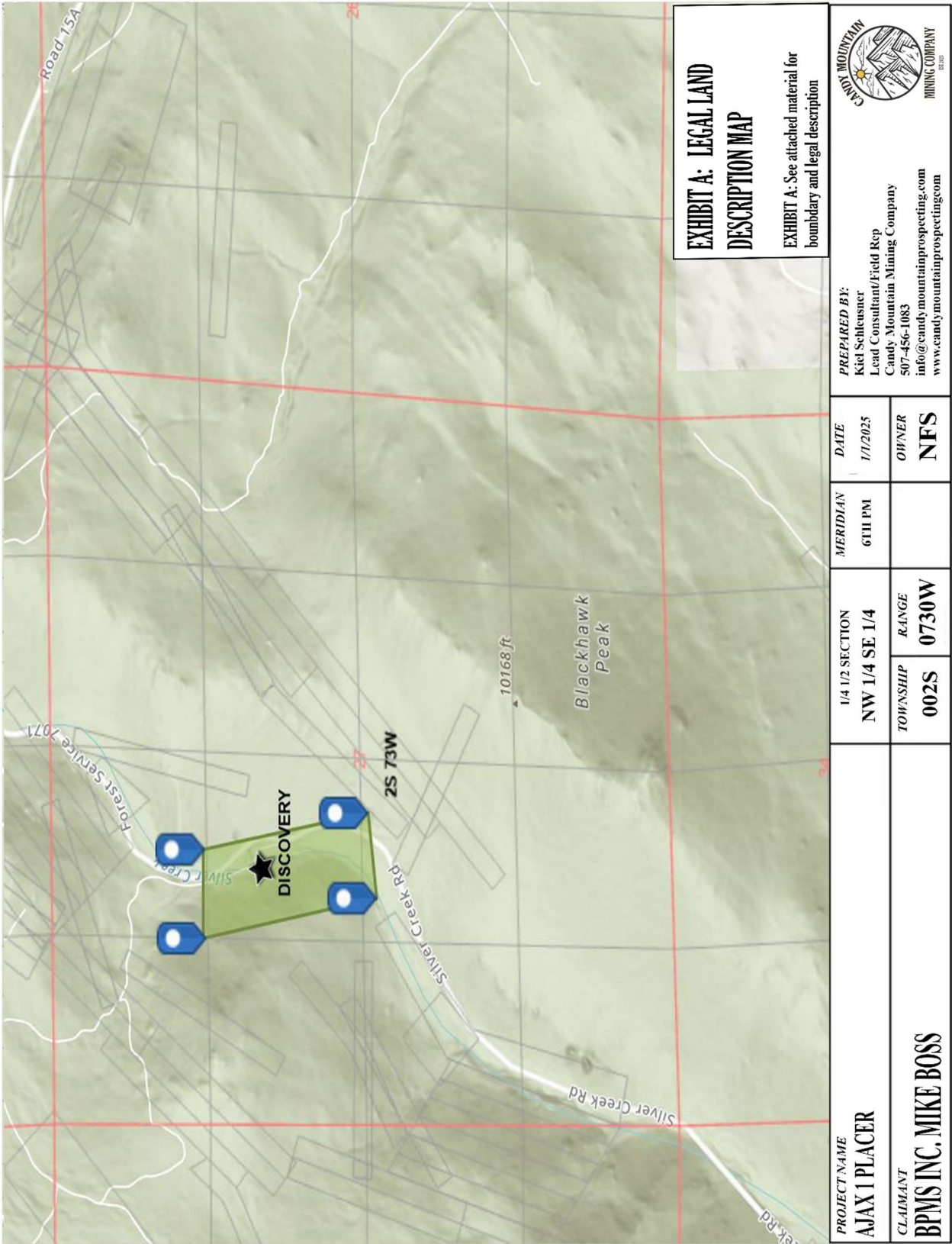
CANDY MOUNTAIN MINING COMPANY INC.
Kiel Schleusner – Field Representative | CEO

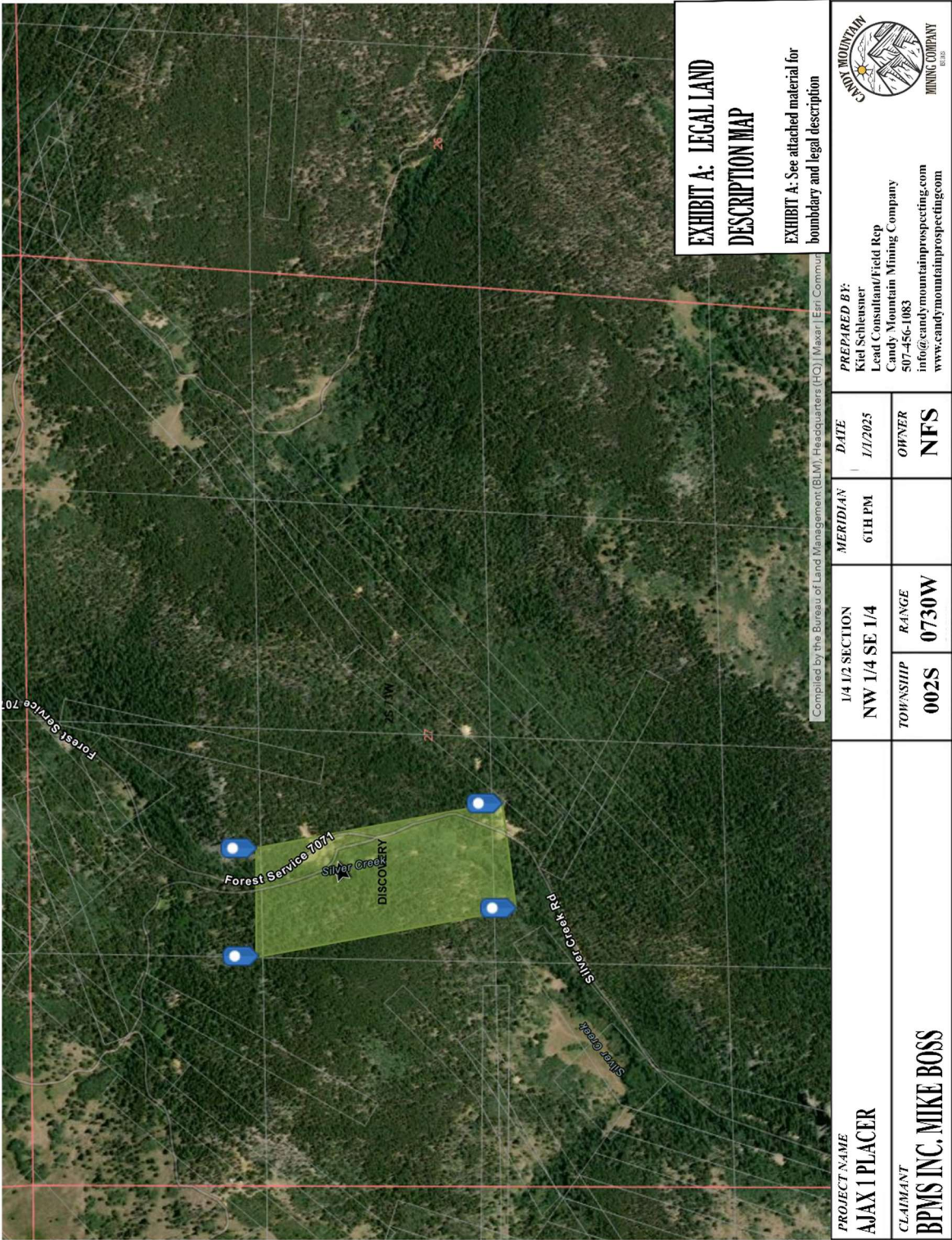




CANDY MOUNTAIN MINING COMPANY INC.
Kiel Schleusner – Field Representative | CEO







PROJECT NAME AJAX 1 PLACER		1/4 1/2 SECTION NW 1/4 SE 1/4		MERIDIAN 6TH PM	DATE 1/1/2025	PREPARED BY: Kiel Schleusner Lead Consultant/Field Rep Candy Mountain Mining Company 507-456-1083 info@candymountainprospecting.com www.candymountainprospecting.com	
CLAIMANT BPMS INC. MIKE BOSS		TOWNSHIP 002S	RANGE 0730W	OWNER NFS		CANDY MOUNTAIN MINING COMPANY EST. 2023	