



STATE OF  
COLORADO

Zuber - DNR, Rob <rob.zuber@state.co.us>

---

## Bowie #2 inspection report

1 message

---

**Zuber - DNR, Rob** <rob.zuber@state.co.us>

Wed, Jul 2, 2025 at 2:10 PM

To: Ryan Wilson <RWilson@wolverinefuels.com>, Art Etter <AEtter@wolverinefuels.com>

Cc: "Cummings, Thomas F" <tcummings@blm.gov>, "Yingling, Kyler M" <kyingling@osmre.gov>

Hello, All -

Please see the attached report from our inspection last week. Let me know if you recommend edits or have questions/comments.

Thanks,  
Rob

Rob Zuber, P.E.  
Environmental Protection Specialist  
Active Mines Program



**COLORADO**  
Division of Reclamation,  
Mining and Safety  
Department of Natural Resources

*Phone: 720.601.2276 | Fax: 303.832.8106*

**Physical Address:**

1313 Sherman Street, Room 215  
Denver, CO 80203

**Address for FedEx or UPS:**

Division of Reclamation, Mining and Safety, Room 215  
1001 East 62nd Avenue  
Denver, CO 80216

[rob.zuber@state.co.us](mailto:rob.zuber@state.co.us) | <http://drms.colorado.gov>




**INSP-REPORTC\_C1996083\_RDZ\_07022025\_with maps.pdf**  
5232K



### PERMIT INFORMATION

<b>Permit Number:</b> C-1996-083 <b>Mine Name:</b> Bowie No. 2 Mine <b>Operator:</b> Bowie Resources, LLC <b>Operator Address:</b> Mr. Art Etter P.O. Box 1488 Paonia, CO 81428	<b>County:</b> Delta <b>Operation Type:</b> Underground <b>Permit Status:</b> Active <b>Ownership:</b> Private
	<b>Operator Representative Present:</b>  Ryan Wilson, Art Etter
<b>Operator Representative Signature: (Field Issuance Only)</b>  	

### INSPECTION INFORMATION

<b>Inspection Start Date:</b> June 25, 2025 <b>Inspection Start Time:</b> 07:00 <b>Inspection End Date:</b> June 25, 2025 <b>Inspection End Time:</b> 14:15		<b>Inspection Type:</b> Coal Partial Inspection <b>Inspection Reason:</b> Surety Release Requested <b>Weather:</b> Clear	
<b>Joint Inspection Agency:</b>  None		<b>Joint Inspection Contacts:</b>	
<b>Post Inspection Agency:</b>  None		<b>Post Inspection Contacts:</b>	
<b>Inspector(s):</b>  Robert Zuber, P.E.  Leigh Simmons	<b>Inspector's Signature:</b>  		<b>Signature Date:</b>  7/2/2025

**Inspection Topic Summary**

NOTE: Y=Inspected N=Not Inspected R=Comments Noted V=Violation Issued NA=Not Applicable

N - Air Resource Protection	Y - Roads
N - Availability of Records	Y - Reclamation Success
Y - Backfill & Grading	Y - Revegetation
NA - Excess Spoil and Dev. Waste	Y - Subsidence
NA - Explosives	Y - Slides and Other Damage
N - Fish & Wildlife	N - Support Facilities On-site
Y - Hydrologic Balance	N - Signs and Markers
Y - Gen. Compliance With Mine Plan	N - Support Facilities Not On-site
N - Other	N - Special Categories Of Mining
Y - Processing Waste	N - Topsoil

**COMMENTS**

This inspection by the Division of Reclamation, Mining and Safety (the Division) was conducted as part of the review of a bond release application (SL-04) submitted by Bowie Resources, LLC (BRL) on April 10, 2025. This inspection is required by Rule 3.03.2(2).

This inspection was conducted by Rob Zuber and Leigh Simmons of the Division on June 25, 2025. Mr. Simmons was the lead inspector for the portion of the inspection related to surveying the topography of the gob piles. Other participants included Ryan Wilson and Art Etter with Wolverine Fuels (parent company of BRL), Kyler Yingling with the Office of Surface Mining Reclamation and Enforcement (OSMRE), and Tom Cummings with the Bureau of Land Management (BLM). A representative of the private landowner for three of the gob vent borehole (GVB) pads, Legacy Ranches, was planning to attend the inspection (per correspondence during the weeks prior to the inspection), but he was not seen.

The inspection included three general activities:

- Assess the topography of the gob piles (aka, coal mine waste banks)
- Assess the condition of remote areas
- Assess the condition of ditches on the gob piles

The maps at the end of this report illustrate the areas associated with these activities. These include a map showing locations of remote areas, a map showing the general locations of the gob piles, and maps illustrating the gob pile areas for SL-04. This last map also includes the names and locations of ditches at the gob piles.

The first part of the inspection entailed using an AeroPoint drone to collect elevation data and imagery of the portions of the gob piles that are the subject of SL-04. On Gob Pile #3, four base points were placed around the pile, and the mission was flown by Leigh Simmons from the haul road above the pile (east of the Prep Plant). On Gob Piles 1, 2, and 4, five base points were placed around these piles (which are close together and can be

Number of Partial Inspection this Fiscal Year: 8

Number of Complete Inspections this Fiscal Year: 4

considered one complex of piles), and the mission was flown from a high point above them, at the northeast corner of Gob Pile #4. At the time of this inspection report, the data from this survey has not been processed. It will be closely reviewed during the adequacy process for SL-04.

The second part of the inspection entailed visiting remote areas of the mine site to determine if they are eligible for Phase I release. These sites included four pads for reclaimed GVBs and the pad for the Terror Creek Vent Shaft.

At all four GVB pads, it was clear that the holes had been sealed, based on visual observation. Also, BRL provided proof of the sealing with a Drillhole Abandonment Report (received by the Division on August 23, 2022) for the GVBs.

For all three of the GVB pads on private land, there is no erosion, and markers for former hole locations are in place. These pads have not been reclaimed to match the approximate original contours, however, Section 2.05 of the permit states that drill pads will be graded to approximate original contours. Therefore, these areas appear to not comply with Rule 4.14.1(2a). BRL will need to submit a Minor Revision to change the plan for these pads before the Division can release them.

The fourth GVB pad, GVB-B17C, is on BLM land. It has been graded well; it fits in with the surrounding topography, and there was no erosion identified. Logs have been placed at the bottom of this pad to assist with erosion control. The marker for this site was not seen. BRL must place this marker and provide proof to the Division for this pad to be Phase I released (per Rule 4.07.3(2a)). There is also an issue with overgrazing at this pad, which will have to be addressed for the vegetation to grow in the future, and for the site to be eligible for Phase II and Phase III release.

The pad for the Terror Creek Vent Shaft has been reclaimed well. The contours fit well into the surrounding topography. There is no erosion, and the vegetation cover is very good. From visual observation, it was clear that the Terror Creek Vent Shaft has been sealed.

The third part of the inspection entailed checking the ditches near the gob piles for stability and compliance with specifications in the Permit. All ditches were found to be stable with no signs of erosion. This is necessary for Phase I release of gob piles. Rule 3.03.1(2a) states that an area cannot be released without drainage control in accordance with the approved reclamation plan.

The specifications for ditches can be found in three volumes of the Permit (Volumes III, IX, and XI). Specifications are listed in the following table.

Number of Partial Inspection this Fiscal Year: 8

Number of Complete Inspections this Fiscal Year: 4

<b>Design Specs for Ditches Related to SL-04</b>							
<b>Ditch #</b>	<b>Material</b>	<b>D50 (in)</b>	<b>Shape</b>	<b>Minimum Depth (ft)</b>	<b>Bottom Width (ft)</b>	<b>Side slope</b>	<b>Grade</b>
D-3	Riprap	6	Triangular	0.30	NA	1.5:1	20% - 50%
D-6	Erodible	NA	Triangular	0.66	NA	1.5:1	2%
D-8	Erodible	NA	Triangular	0.69	NA	3:1(left), 15:1(right)	3%
D-9	Erodible	NA	Triangular	0.77	NA	3:1(left), 15:1(right)	2%
D-10	Riprap	12	Triangular	0.70	NA	2:1	30%
D-11	Riprap	12	Triangular	0.90	NA	2:1	30%
F-4	Riprap	12	Triangular	2.60	NA	1.5:1	30%
F-6	Erodible	NA	Triangular	0.70	NA	3:1(left), 20:1(right)	1.1%
F-7	Riprap	12	Trapezoidal	0.76	3	2:1	2%
F-7A	Riprap	24	Triangular	0.90	NA	2:1	0.3%
F-11	Erodible	NA	Triangular	0.63	NA	3:1(left), 15:1(right)	3.4%
J-3	Erodible	NA	Trapezoidal	2.30	3	1.5:1	1%
J-9	Riprap	15	Trapezoidal	1.30	3	1.5:1	11%
J-11	Riprap	18	Trapezoidal	1.60	3	1.5:1	8%
J-12	Erodible	NA	Triangular	0.70	NA	20:1(left), 3:1(right)	2%
J-13	Erodible	NA	Triangular	0.70	NA	3:1(left), 20:1(right)	2%

Number of Partial Inspection this Fiscal Year: 8

Number of Complete Inspections this Fiscal Year: 4

All the specifications were met with the following exception. In the specifications, Ditch F-7 (below Gob Pile #2) is listed as a riprap-lined channel. However, field observation revealed that it is not riprap lined. BRL has submitted a Minor Revision to change the analysis and specifications for this ditch; this revision (MR-211, submitted June 30, 2025) must be approved before the Division can release any tasks related to Gob Pile #2.

Another issue is with Ditch F-4. Part of it will need to be repaired where there is a crossing for trucks hauling soil to Gob Pile #2. BRL should make this repair and provide the Division with proof of the work, such as photographs.

**DOCUMENTS RECEIVED - none**

**OTHER (SPECIFY) - none**

### **ENFORCEMENT ACTIONS/COMPLIANCE**

No enforcement actions were initiated as a result of this inspection, nor are any pending.

Number of Partial Inspection this Fiscal Year: 8

Number of Complete Inspections this Fiscal Year: 4

## **PHOTOGRAPHS**



**South side of Gob Pile #3 – no erosion**



**Leigh Simmons setting base point on Gob Pile #3**

Number of Partial Inspection this Fiscal Year: 8

Number of Complete Inspections this Fiscal Year: 4



**Base point at toe of Gob Pile #1**



**Use of drone above Gob Pile #4**

Number of Partial Inspection this Fiscal Year: 8

Number of Complete Inspections this Fiscal Year: 4



**Pad for GVB-B17F – stable slope**



**Pad for GVB-B17D – high, steep slope**

Number of Partial Inspection this Fiscal Year: 8

Number of Complete Inspections this Fiscal Year: 4



**Pad for GVB-B17C – well graded, branches for erosion control, poor vegetation**



**Pad for Terror Creek Vent Shaft – well graded, good vegetation cover**

Number of Partial Inspection this Fiscal Year: 8

Number of Complete Inspections this Fiscal Year: 4



**Ditch F-4, east side of Gob Pile #2**



**Ditch D-10, west side of Gob Pile #4**

Number of Partial Inspection this Fiscal Year: 8

Number of Complete Inspections this Fiscal Year: 4



**Ditch D-9, contour ditch in center of Gob Pile #4**



**Ditch F-7, along toe of Gob Pile #2 – erodible channel does not meet the current spec, but is stable**

Number of Partial Inspection this Fiscal Year: 8

Number of Complete Inspections this Fiscal Year: 4



**Ditch J-11, east side of Gob Pile #3**



**Ditch J-9, west side of Gob Pile #3**

Number of Partial Inspection this Fiscal Year: 8

Number of Complete Inspections this Fiscal Year: 4

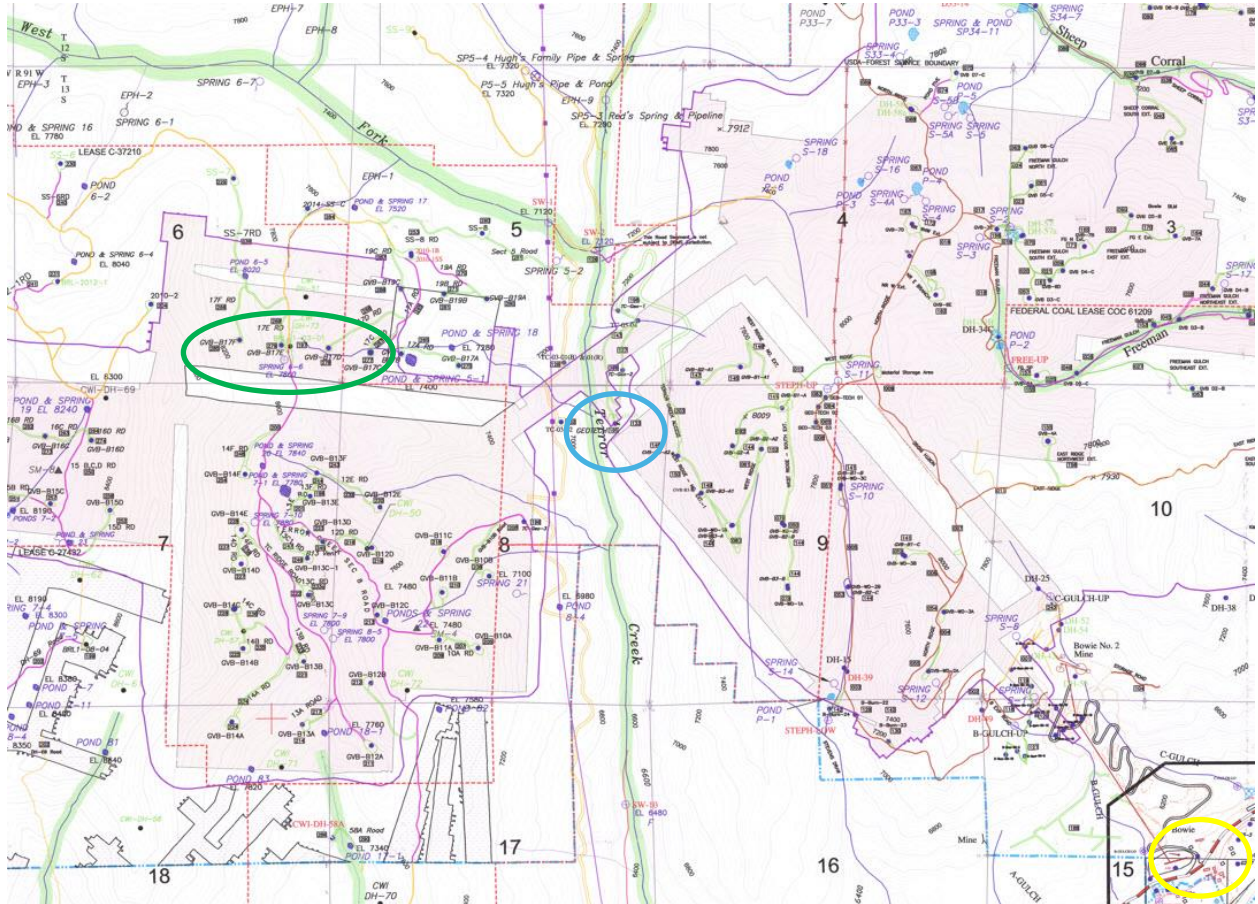
# **MAPS**

**Locations of remote areas**

**General locations of the gob piles**

**Maps illustrating the gob pile areas for SL-04**

## Locations of Remote Areas for SL-04



GVB pads in green oval.

Terror Creek Vent Shaft pad in blue circle.


Mine entrance in yellow circle.

Approximate distance of one mile: 

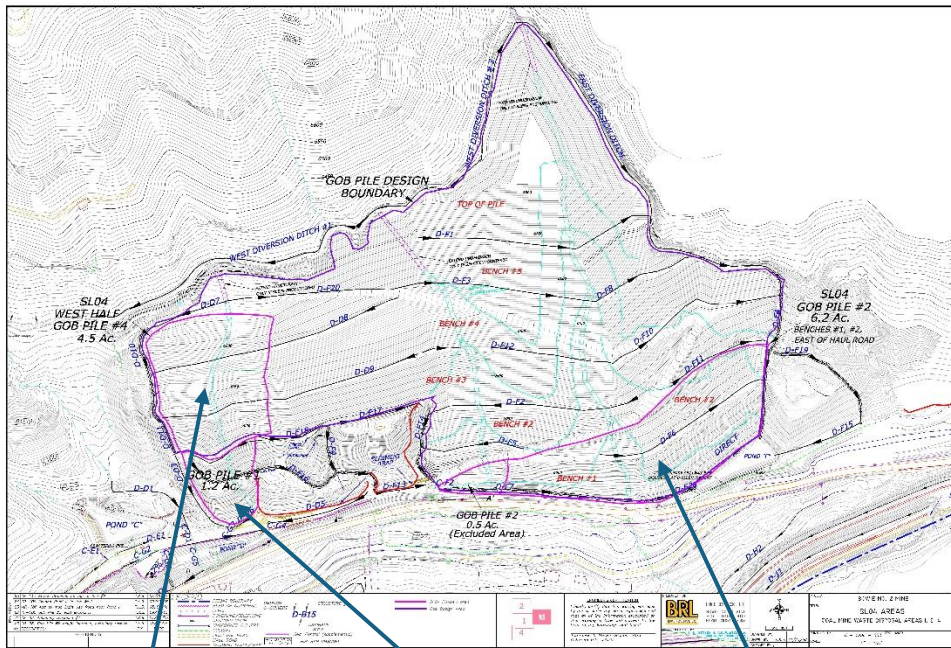
This topographic map illustrates the study area with various drainage basins and infrastructure. Key features include:

- Drainage Areas:** Labeled as DRAINAGE AREA "A" through "H", each outlined in a different color (blue, red, green, purple, etc.).
- Topography:** Contour lines indicating elevation, with labels such as 400, 450, 500, 550, 600, 650, 700, 750, 800, 850, 900, 950, 1000, 1050, 1100, 1150, 1200, 1250, 1300, 1350, 1400, 1450, 1500, 1550, 1600, 1650, 1700, 1750, 1800, 1850, 1900, 1950, 2000, 2050, 2100, 2150, 2200, 2250, 2300, 2350, 2400, 2450, 2500, 2550, 2600, 2650, 2700, 2750, 2800, 2850, 2900, 2950, 3000, 3050, 3100, 3150, 3200, 3250, 3300, 3350, 3400, 3450, 3500, 3550, 3600, 3650, 3700, 3750, 3800, 3850, 3900, 3950, 4000, 4050, 4100, 4150, 4200, 4250, 4300, 4350, 4400, 4450, 4500, 4550, 4600, 4650, 4700, 4750, 4800, 4850, 4900, 4950, 5000, 5050, 5100, 5150, 5200, 5250, 5300, 5350, 5400, 5450, 5500, 5550, 5600, 5650, 5700, 5750, 5800, 5850, 5900, 5950, 6000, 6050, 6100, 6150, 6200, 6250, 6300, 6350, 6400, 6450, 6500, 6550, 6600, 6650, 6700, 6750, 6800, 6850, 6900, 6950, 7000, 7050, 7100, 7150, 7200, 7250, 7300, 7350, 7400, 7450, 7500, 7550, 7600, 7650, 7700, 7750, 7800, 7850, 7900, 7950, 8000, 8050, 8100, 8150, 8200, 8250, 8300, 8350, 8400, 8450, 8500, 8550, 8600, 8650, 8700, 8750, 8800, 8850, 8900, 8950, 9000, 9050, 9100, 9150, 9200, 9250, 9300, 9350, 9400, 9450, 9500, 9550, 9600, 9650, 9700, 9750, 9800, 9850, 9900, 9950, 10000.
- Infrastructure:** Includes roads (e.g., STATE HIGHWAY 133, OLD STATE HIGHWAY 133), stockpiles (e.g., COAL STOCKPILE PAD, TOPSOIL STOCKPILE), and various structures (e.g., POND "B", POND "C", POND "D", POND "E", POND "F", POND "G", POND "H", POND "I", POND "J", POND "K", POND "L", POND "M", POND "N", POND "O", POND "P", POND "Q", POND "R", POND "S", POND "T", POND "U", POND "V", POND "W", POND "X", POND "Y", POND "Z", POND "AA", POND "AB", POND "AC", POND "AD", POND "AE", POND "AF", POND "AG", POND "AH", POND "AI", POND "AJ", POND "AK", POND "AL", POND "AM", POND "AN", POND "AO", POND "AP", POND "AQ", POND "AR", POND "AS", POND "AT", POND "AU", POND "AV", POND "AW", POND "AX", POND "AY", POND "AZ", POND "BA", POND "BB", POND "BC", POND "BD", POND "BE", POND "BF", POND "BG", POND "BH", POND "BI", POND "BJ", POND "BK", POND "BL", POND "BM", POND "BN", POND "BO", POND "BP", POND "BQ", POND "BR", POND "BS", POND "BT", POND "BU", POND "BV", POND "BW", POND "BX", POND "BY", POND "BZ", POND "CA", POND "CB", POND "CC", POND "CD", POND "CE", POND "CF", POND "CG", POND "CH", POND "CI", POND "CJ", POND "CK", POND "CL", POND "CM", POND "CN", POND "CO", POND "CP", POND "CQ", POND "CR", POND "CS", POND "CT", POND "CU", POND "CV", POND "CW", POND "CX", POND "CY", POND "CZ", POND "DA", POND "DB", POND "DC", POND "DD", POND "DE", POND "DF", POND "DG", POND "DH", POND "DI", POND "DJ", POND "DK", POND "DL", POND "DM", POND "DN", POND "DO", POND "DP", POND "DQ", POND "DR", POND "DS", POND "DT", POND "DU", POND "DV", POND "DW", POND "DX", POND "DY", POND "DZ", POND "EA", POND "EB", POND "EC", POND "ED", POND "EE", POND "EF", POND "EG", POND "EH", POND "EI", POND "EJ", POND "EK", POND "EL", POND "EM", POND "EN", POND "EO", POND "EP", POND "EQ", POND "ER", POND "ES", POND "ET", POND "EU", POND "EV", POND "EW", POND "EX", POND "EY", POND "EZ", POND "FA", POND "FB", POND "FC", POND "FD", POND "FE", POND "FF", POND "FG", POND "FH", POND "FI", POND "FJ", POND "FK", POND "FL", POND "FM", POND "FN", POND "FO", POND "FP", POND "FQ", POND "FR", POND "FS", POND "FT", POND "FU", POND "FV", POND "FW", POND "FX", POND "FY", POND "FZ", POND "GA", POND "GB", POND "GC", POND "GD", POND "GE", POND "GF", POND "GG", POND "GH", POND "GI", POND "GJ", POND "GK", POND "GL", POND "GM", POND "GN", POND "GO", POND "GP", POND "GQ", POND "GR", POND "GS", POND "GT", POND "GU", POND "GV", POND "GW", POND "GX", POND "GY", POND "GZ", POND "HA", POND "HB", POND "HC", POND "HD", POND "HE", POND "HF", POND "HG", POND "HH", POND "HI", POND "HJ", POND "HK", POND "HL", POND "HM", POND "HN", POND "HO", POND "HP", POND "HQ", POND "HR", POND "HS", POND "HT", POND "HU", POND "HV", POND "HW", POND "HX", POND "HY", POND "HZ", POND "IA", POND "IB", POND "IC", POND "ID", POND "IE", POND "IF", POND "IG", POND "IH", POND "II", POND "IJ", POND "IK", POND "IL", POND "IM", POND "IN", POND "IO", POND "IP", POND "IQ", POND "IR", POND "IS", POND "IT", POND "IU", POND "IV", POND "IW", POND "IX", POND "IY", POND "IZ", POND "JA", POND "JB", POND "JC", POND "JD", POND "JE", POND "JF", POND "JG", POND "JH", POND "JI", POND "JJ", POND "JK", POND "JL", POND "JM", POND "JN", POND "JO", POND "JP", POND "JQ", POND "JR", POND "JS", POND "JT", POND "JU", POND "JV", POND "JW", POND "JX", POND "JY", POND "JZ", POND "KA", POND "KB", POND "KC", POND "KD", POND "KE", POND "KF", POND "KG", POND "KH", POND "KI", POND "KJ", POND "KK", POND "KL", POND "KM", POND "KN", POND "KO", POND "KP", POND "KQ", POND "KR", POND "KS", POND "KT", POND "KU", POND "KV", POND "KW", POND "KX", POND "KY", POND "KZ", POND "LA", POND "LB", POND "LC", POND "LD", POND "LE", POND "LF", POND "LG", POND "LH", POND "LI", POND "LJ", POND "LK", POND "LL", POND "LM", POND "LN", POND "LO", POND "LP", POND "LQ", POND "LR", POND "LS", POND "LT", POND "LU", POND "LV", POND "LW", POND "LX", POND "LY", POND "LZ", POND "MA", POND "MB", POND "MC", POND "MD", POND "ME", POND "MF", POND "MG", POND "MH", POND "MI", POND "MJ", POND "MK", POND "ML", POND "MM", POND "MN", POND "MO", POND "MP", POND "MQ", POND "MR", POND "MS", POND "MT", POND "MU", POND "MV", POND "MW", POND "MX", POND "MY", POND "MZ", POND "NA", POND "NB", POND "NC", POND "ND", POND "NE", POND "NF", POND "NG", POND "NH", POND "NI", POND "NJ", POND "NK", POND "NL", POND "NM", POND "NN", POND "NO", POND "NP", POND "NQ", POND "NR", POND "NS", POND "NT", POND "NU", POND "NV", POND "NW", POND "NX", POND "NY", POND "NZ", POND "OA", POND "OB", POND "OC", POND "OD", POND "OE", POND "OF", POND "OG", POND "OH", POND "OI", POND "OJ", POND "OK", POND "OL", POND "OM", POND "ON", POND "OO", POND "OP", POND "OQ", POND "OR", POND "OS", POND "OT", POND "OU", POND "OV", POND "OW", POND "OX", POND "OY", POND "OZ", POND "PA", POND "PB", POND "PC", POND "PD", POND "PE", POND "PF", POND "PG", POND "PH", POND "PI", POND "PJ", POND "PK", POND "PL", POND "PM", POND "PN", POND "PO", POND "PP", POND "PQ", POND "PR", POND "PS", POND "PT", POND "PU", POND "PV", POND "PW", POND "PX", POND "PY", POND "PZ", POND "QA", POND "QB", POND "QC", POND "QD", POND "QE", POND "QF", POND "QG", POND "QH", POND "QI", POND "QJ", POND "QK", POND "QL", POND "QM", POND "QN", POND "QO", POND "QP", POND "QQ", POND "QR", POND "QS", POND "QT", POND "QU", POND "QV", POND "QW", POND "QX", POND "QY", POND "QZ", POND "RA", POND "RB", POND "RC", POND "RD", POND "RE", POND "RF", POND "RG", POND "RH", POND "RI", POND "RJ", POND "RK", POND "RL", POND "RM", POND "RN", POND "RO", POND "RP", POND "RQ", POND "RR", POND "RS", POND "RT", POND "RU", POND "RV", POND "RW", POND "RX", POND "RY", POND "RZ", POND "SA", POND "SB", POND "SC", POND "SD", POND "SE", POND "SF", POND "SG", POND "SH", POND "SI", POND "SJ", POND "SK", POND "SL", POND "SM", POND "SN", POND "SO", POND "SP", POND "SQ", POND "SR", POND "SS", POND "ST", POND "SU", POND "SV", POND "SW", POND "SX", POND "SY", POND "SZ", POND "TA", POND "TB", POND "TC", POND "TD", POND "TE", POND "TF", POND "TG", POND "TH", POND "TI", POND "TJ", POND "TK", POND "TL", POND "TM", POND "TN", POND "TO", POND "TP", POND "TQ", POND "TR", POND "TS", POND "TT", POND "TU", POND "TV

Gob Pile 3 in green polygon.

Approximate distance of 1,000 feet: 

### Locations of Gob Pile Areas Related to the SL-04 Application



Gob Pile #4 (SL-04 area)

Gob Pile #1 (SL-04 area)

Gob Pile #2 (SL-04 area)

Gob Pile #3 (SL-04 area)

