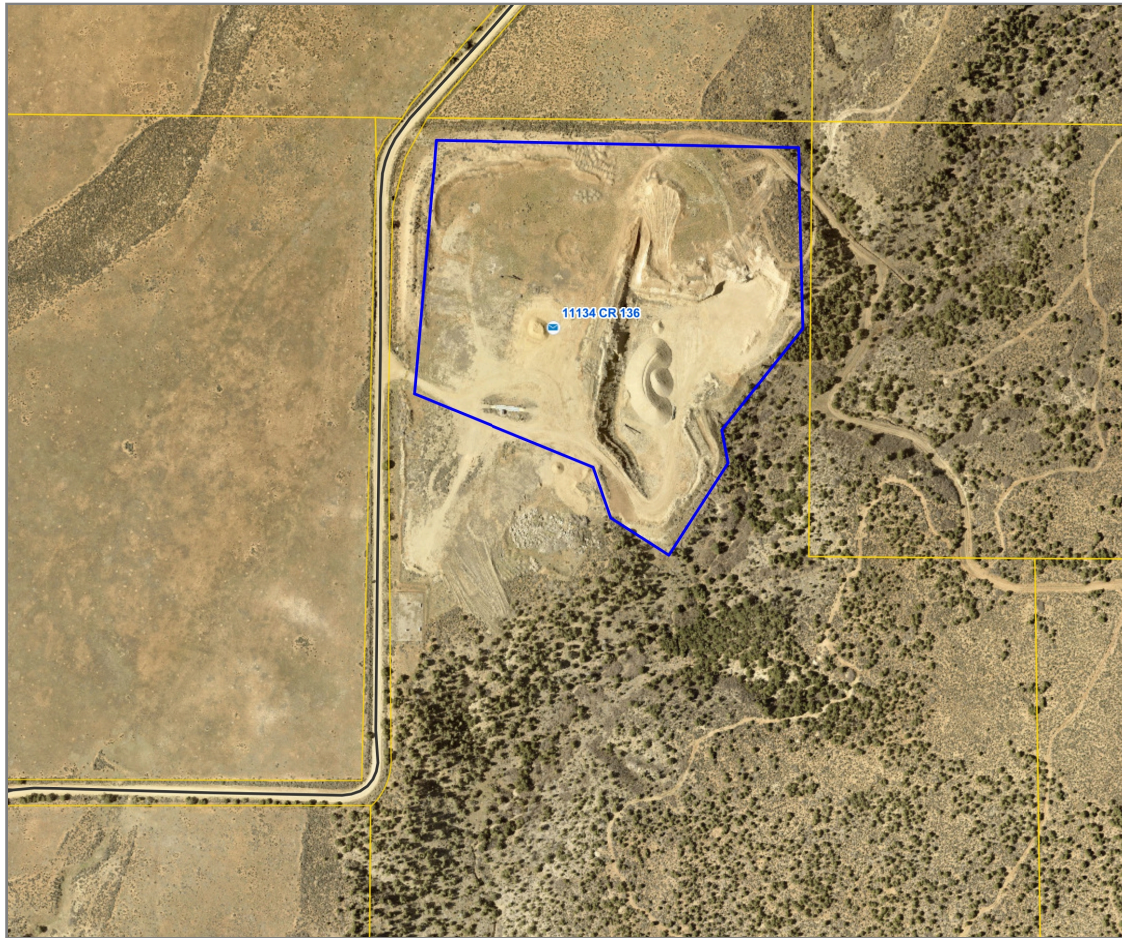


Westside Gravel Pit, LPC



Parcel Information

Recorded Plats



Disclaimer: The information is provided as is without warranty of any kind, either express or implied, including but not limited to the implied warranties of merchantability and fitness for a particular purpose. In no event shall La Plata County be liable for any damages whatsoever including direct, indirect, incidental, consequential, loss of business profits or special damages.

Map Scale
1 inch = 376 feet
7/2/2025