

**GOLD BASIN MINE  
M-1992-045**

**TECHNICAL REVISION-01**

**GOLD BASIN MINE  
M-1992-045  
TECHNICAL REVISION-01**

**TAILINGS POND  
CONCRETE DISPOSAL WORK PLAN**

**SUBMITTED TO:**

**COLORADO DIVISION OF RECLAMATION  
MINING AND SAFETY**

**GOLD BASIN MINE**  
**M-1992-045**  
**TECHNICAL REVISION-01**  
June 6, 2025

**CONCRETE DISPOSAL WORK PLAN**  
**26020 CR 398**  
**Granite Colorado 81228**

**INTRODUCTION**

Upon approval, Technical Revision-01 will authorize Mr. Lauren Leffingwell, the owner of Gold Basin Mine, to dispose concrete rubble resulting from the demolition of his structure built on USFS public lands.

Gold Basin Mine is owned by Mr. Lauren Leffingwell. The mine is located within 160 acres of federally patented claims in the headwaters of Cache Creek, about 20 miles west of Granite, Colorado. (See Figure 1). The mine has been periodically operating since the early 1900's and is currently an active State and County permitted placer mine.

In 2017, Mr. Leffingwell unfortunately constructed his structure on United States Forest Service (USFS) public land located approximately two miles down gradient from Mr. Leffingwell's Gold Basin mine. (See Figure 2) The USFS-Pike-San Isabel National Forest has mandated the demolition of the structure and the area affected by construction activities must be reclaimed in accordance with the USFS-approved demolition work plan.

Demolition is scheduled to be conducted this construction year. Mr. Leffingwell is planning to dispose of the foundation concrete (approximately 50-75 cubic yards.) into a dry abandoned tailings pond found on Gold Basin's permitted mine area.

Concrete will be disposed of in a dry tailings pond formerly used by the earlier mine operators. (See Figure 1 and Photo 1). The disposal area is within Gold Basin's permitted mine area and will be reclaimed following the existing approved permit (M1992-045) and the attached Technical Revision (01)

**GOLD BASIN MINE  
M-1992-045**

**TECHNICAL REVISION-01**

The concrete disposal cell is in the dry, abandoned tailings pond. (39° 01'59.63" N 106°21'16.83" W -Elevation 12,628 feet). The disposal area will be constructed above the groundwater table. The disposal area will be backfilled with three feet of adjacent disturbed overburden material, graded to contour, and revegetated in accordance with Gold Basin's existing mine permit reclamation criteria.

**House Demolition Removal Plan**

**Personnel**

House demolition will be conducted by Diesslin Structures, Inc., a licensed contractor located in Chaffee County. Demolition activities will be completed in accordance with an approved USFS-Pike-San Isabel National Forest removal work plan.

**Haulage Road**

Concrete rubble<sup>1</sup> will be hauled from demolition site using CR 398 and mine constructed, and Gold Basin roads to Gold Basin Mine Site . See Figure 2.

**River Crossing**

Cache Creek truck crossing will use existing structures.

**Contact**

**Colorado Mined Land Reclamation Division**

Contact: Mr. Lucas West-CDRMS- Environmental Protection Specialist  
303.866.3567 Ext 8187.

**Gold Basin Mine -Owner/Registered Agent**

Lauren Leffingwell-Gold Basin Mine-847.249.6035  
George M.L. Robinson-R Squared, Inc.-720.641.2534

---

<sup>1</sup> Concrete Rubble consists of cement, rebar and ICF Foundation Blocks

**GOLD BASIN MINE  
M-1992-045**

**TECHNICAL REVISION-01**

**Figures**

Figure 1 -Gold Basin Mine General Location -Granite 7.5 Quadrangle Map

Figure 2-House Demolition Haul Road to Gold Basin Concrete Disposal Location

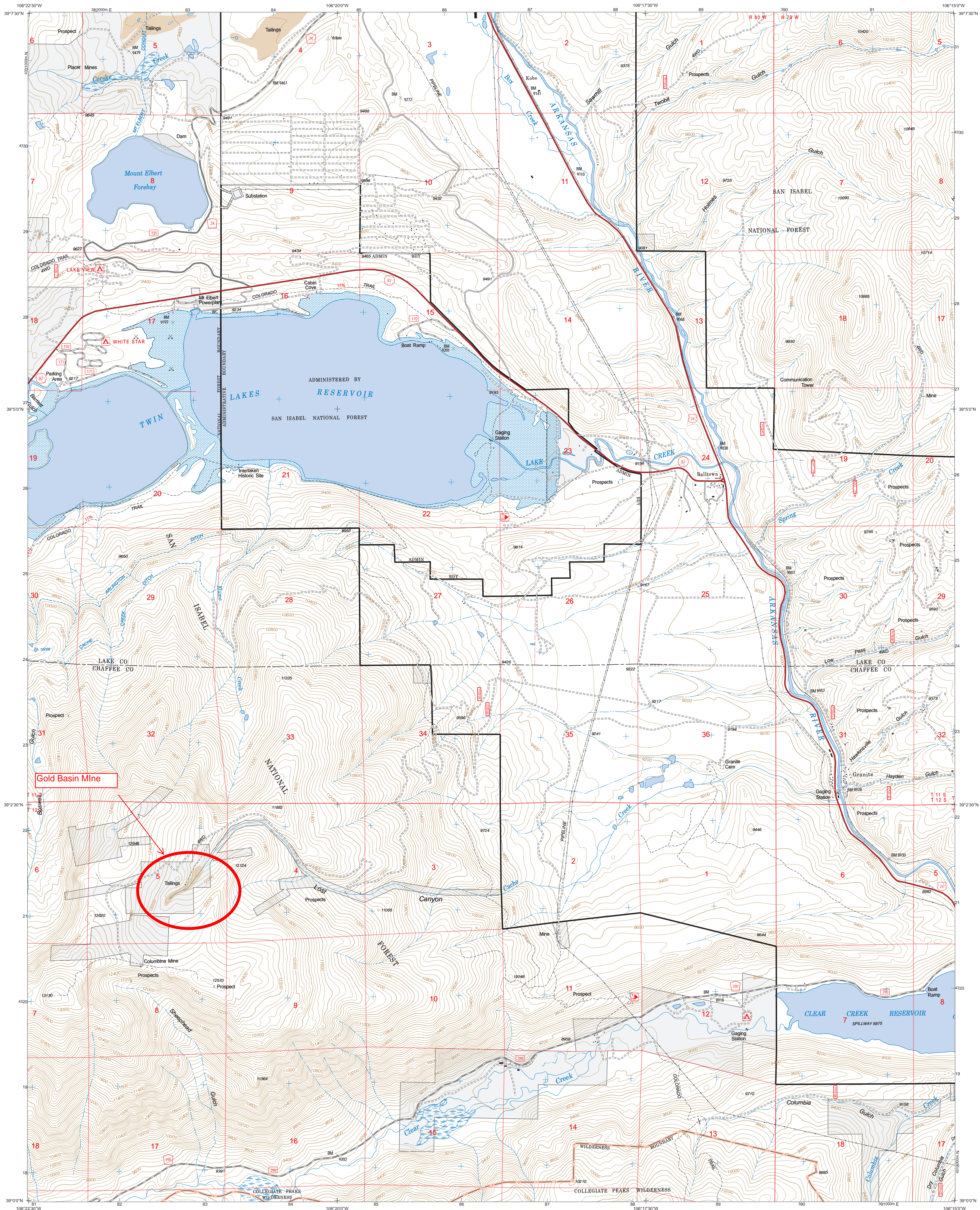
Figure 3-Gold Basin Mine Site Characterization-Concrete Disposal Location

Figure 4-Aerial Photo-Gold Basin Mine Site Concrete Disposal Location.

**GOLD BASIN MINE  
M-1992-045**

**TECHNICAL REVISION-01**

**Figure 1  
Gold Basin Mine General Location  
Granite 7.5 Quadrangle Map**



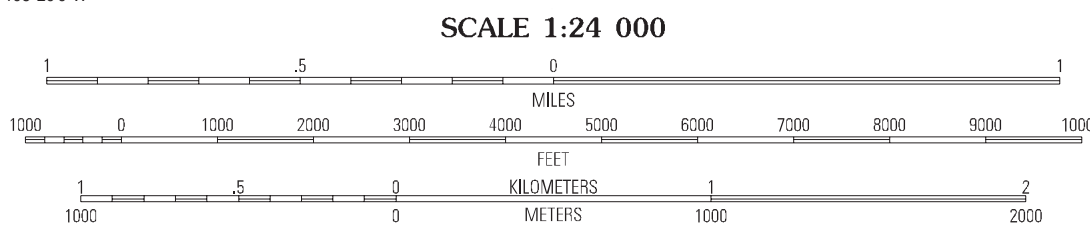
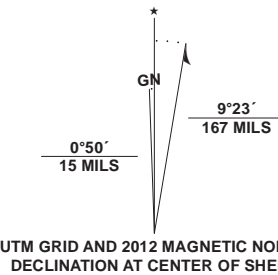
Produced by the USDA Forest Service: 3/9/2012

North American Datum of 1983 (NAD 83). Projection and  
1 000-meter ties: Universal Transverse Mercator, zone 13

Non-National Forest System lands within the National Forest  
Inholdings may exist in other National or State reservations.

This is not a legal document. Public lands are subject to change and leasing,  
and may have access restrictions; check with the appropriate offices. Obtain  
permission before entering private lands.

The Forest Service uses the most current and complete data available.  
Modifications, updates, and corrections may be made to this map product at  
anytime. Print quality is determined by the output device used when producing  
a hardcopy product.



Colorado

Mount Mansfield 1995	Leadville South 1995	Mount Sheridan 1994
Mount Elbert 1997	Granite 1997	South Peak 1994
Winfield 1997	Mount Harvard 1997	Harvard Lakes 1995

ADJOINING QUADRANGLES

HIGHWAYS AND ROADS	
Interstate.....	5
U.S. ....	101
State.....	19
County.....	6
National Forest, suitable for passenger cars.....	109 60
National Forest, suitable for high clearance vehicles.....	8
National Forest Trail.....	384
Highway.....	5
Road, Unspecified.....	101
Road, Paved.....	19
Road, Gravel.....	6
Road, Dirt.....	109
Unimproved, 4 wheel drive.....	8
Trail.....	384
Gate: Barrier.....	101
Check with local Forest Service unit for current travel conditions and restrictions	

Figure 1

**GOLD BASIN MINE  
M-1992-045**

**TECHNICAL REVISION-01**

**Figure 2  
House Demolition Haul Road  
Gold Basin Concrete Disposal Location**

# Concrete Disposal Site

WITHIN GOLD BASIN MINE PATENTED CLAIMS

## Legend

- CR 398
- 📌 Concrete-Debris Disposal Haul Road
- 📌 Gold Basin Mine
- 📌 Haul Road
- 🟩 Mine Permitted area



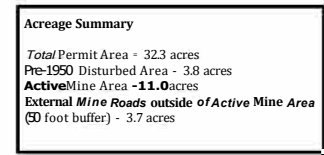
Figure 2  
Structure Demolition  
Concrete Disposal Haul Road

**GOLD BASIN MINE  
M-1992-045**

**TECHNICAL REVISION-01**

**Figure 3  
Gold Basin Mine Site Characterization  
Concrete Disposal Location**

**Results of Survey  
Potential Permit Area  
Gold Basin Placer  
located in Section 5**



**SURVEY DESCRIPTION:**  
A portion of the Gold Basin Placer (M.S. 544%)

**SURVEYOR'S CERTIFICATION:**  
I hereby state that this survey and plat was prepared by me or under my direct responsibility, supervision and checking, and that, in my professional opinion it is true and correct to the best of my knowledge, belief and information based on the standards of care of Professional Land Surveyors practicing in the State of Colorado.

John E Mower, P.L.S.  
Colorado Registration No. 37060

**GOLD BASIN MINE  
M-1992-045**

**TECHNICAL REVISION-01**

**Figure 4  
Aerial Photo  
Gold Basin Mine Concrete Disposal Location.**

# Concrete Disposal SITE

GOLD BASIN MINE

## Legend

- Concrete Disposal Site
- Gold Basin Mine

CR 398

GOLD BASIN MINE  
ACCESS ROAD

CACHE CREEK

Gold Basin Mine

Concrete Disposal Cell

WAREHOUSE

FIGURE 4  
AERIAL PHOTO  
GOLD BASIN MINE SITE  
CONCRETE DISPOSAL SITE



500 ft

**GOLD BASIN MINE  
M-1992-045  
TECHNICAL REVISION-01**

**Attachment A  
ICF Foundation Block  
Safety Data Sheets Summary**

**GOLD BASIN MINE  
M-1992-045**

**TECHNICAL REVISION-01**

**Attachment A**

**ICF Foundation Block  
Safety Data Sheets Summary**

The document is a Material Safety Data Sheet (MSDS) for Fox Blocks, detailing the safety information, composition, and health hazards associated with their insulating concrete forms (ICF) products.

**Company and Product Identification**

Fox Blocks, a division of Airlite Plastics Co., specializes in manufacturing Insulating Concrete Forms (ICF) for the construction industry. Their products include diverse types of pre-assembled and field-assembled ICFs, primarily made from Expandable Polystyrene (EPS) and Polypropylene (PP) resins.

- Location: 525 Kansas Avenue, Omaha, NE 68110
- Contact: 1-877-369-2562
- Product Types: Fox Block, Fox 1440, Silver Fox, Fox Tilt-up
- Key Materials: EPS resin and PP copolymer resin

**Material Composition and Safety Information**

The primary materials used in Fox Blocks products are EPS and PP, with specific CAS numbers and concentrations provided. The MSDS outlines potential health effects, reactivity hazards, and safe handling practices.

- EPS Resin Composition: 93-96% Polystyrene, 3-6% Pentanes, <0.5% Coatings, <0.9% Flame Retardant
- PP Resin Composition: 96-98% PP Ethylene Copolymer, 2-4% Stabilizers & Additives
- Health Risks: Mechanical irritation to eyes and skin, respiratory irritation from dust

**Hazard Ratings and Emergency Procedures**

# **GOLD BASIN MINE**

## **M-1992-045**

### **TECHNICAL REVISION-01**

The MSDS provides NFPA and HMIS hazard ratings, indicating the health, flammability, and instability of the materials. Emergency procedures for exposure and first aid measures are also detailed.

- NFPA Ratings: Health 1, Flammability 2, Instability 0
- First Aid: Rinse eyes with water, wash skin with soap, remove to fresh air if inhaled, monitor for ingestion.

#### **Fire Safety and Handling Guidelines**

Fire safety measures and handling procedures are crucial due to the combustible nature of the materials. Specific extinguishing media and protective equipment for firefighters are recommended.

- Extinguishing Media: Water spray, dry chemical, carbon dioxide
- Firefighter Protection: NIOSH-approved SCBA and full protective gear required.
- Handling: Follow good manufacturing practices, avoid high temperatures and open flames

#### **Environmental Impact and Disposal Instructions**

The MSDS discusses the environmental impact of EPS and PP materials, including their persistence and potential effects on aquatic life. Proper disposal methods are outlined to comply with regulations.

- Ecotoxicity: Not harmful to aquatic organisms, but pellets can cause mechanical harm.
- Disposal: Not classified as hazardous waste; follow local regulations for disposal

#### **Regulatory Compliance and Safety Standards**

Fox Blocks products comply with various federal and state regulations, including TSCA and SARA. The materials are not classified as hazardous under OSHA standards.

- TSCA Compliance: All ingredients on the TSCA inventory
- OSHA Classification: PP resin not classified as hazardous.
- WHMIS Classification: EPS resin classified as B4 - Flammable and Combustible Material

#### **Disclaimer and User Responsibility**

**GOLD BASIN MINE  
M-1992-045**

**TECHNICAL REVISION-01**

The MSDS includes a disclaimer stating that the information is based on available data and is intended for safety guidance. Users are responsible for ensuring compliance with local regulations and safe handling practices.

- User Responsibility: Ensure suitability and completeness of information.
- Disclaimer: No warranty on accuracy or comprehensiveness of data provided